



BBRKC draft risk table

Katie Palof

ADF&G



BBRKC draft risk table

- Template from groundfish group
- Reviewed SAFE doc and minutes to fill in each subject area
- ESP provided helpful information for areas 3 and 4
- Uncertainty about level of concern baseline

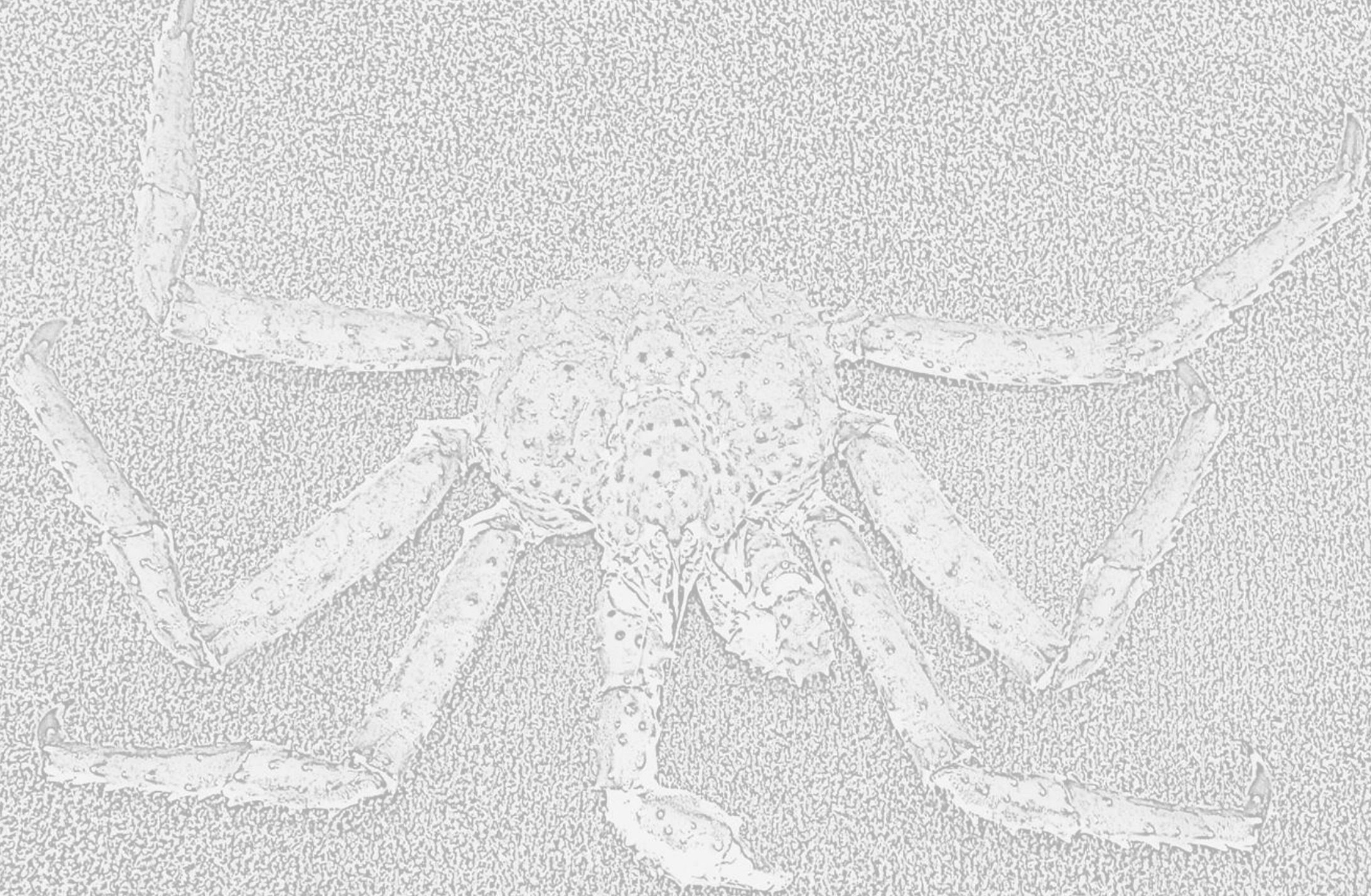
BBRKC

Draft Risk Table Evaluation in 2022







Assessment-related considerations	Population dynamics considerations	Environmental/ecosystem considerations	Fishery Performance
<p>Strong retrospective pattern in MMB (high Mohn's rho)</p> <p>Stable GMACS reference model</p> <p>Natural mortality time blocks</p> <p>Have 2021 survey data point, no need for extra uncertainty for missing survey in 2020</p> <p>Conclusion: Level 1, No increased concerns</p>	<p>Poor recruitment in recent years led to a declining trends in mature biomass.</p> <p>No signs of recruitment improvements.</p> <p>Potential shifting spatial distributions?</p> <p>Decrease in female biomass below management threshold</p> <p>Conclusion: Level 2, substantially increased concerns</p>	<p>Increased potential predation of early life stages (BB salmon increases)</p> <p>Poor larval recruitment conditions last few years (ESP)</p> <p>Cold pool distributional shifts</p> <p>Conclusion: Level 1, No increased concerns</p>	<p>2020/21 fishery CPUE was up relative to previous yr</p> <p>Fishery in traditional grounds</p> <p>75% of the catch in first week of fishery</p> <p>Bycatch typical levels in other fisheries.</p> <p>Conclusion: Level 1, No increased concerns</p>

Sept/Oct 2021 recommended ABC = 80% of max ABC (20% buffer).



Risk Table Criteria

	Assessment-related considerations	Population dynamics considerations	Environmental/ecosystem considerations	Fishery Performance
Level 1: Normal 	Typical to moderately increased uncertainty/minor unresolved issues in assessment.	Stock trends are typical for the stock; recent recruitment is within normal range.	No apparent environmental/ecosystem concerns	No apparent fishery/resource-use performance and/or behavior concerns
Level 2: Substantially increased concerns 	Substantially increased assessment uncertainty/unresolved issues.	Stock trends are unusual; abundance increasing or decreasing faster than has been seen recently, or recruitment pattern is atypical.	Some indicators showing an adverse signals relevant to the stock but the pattern is not consistent across all indicators.	Some indicators showing adverse signals but the pattern is not consistent across all indicators
Level 3: Major Concern 	Major problems with the stock assessment; very poor fits to data; high level of uncertainty; strong retrospective bias.	Stock trends are highly unusual; very rapid changes in stock abundance, or highly atypical recruitment patterns.	Multiple indicators showing consistent adverse signals a) across the same trophic level as the stock, and/or b) up or down trophic levels (i.e., predators and prey of the stock)	Multiple indicators showing consistent adverse signals a) across different sectors, and/or b) different gear types
Level 4: Extreme concern 	Severe problems with the stock assessment; severe retrospective bias. Assessment considered unreliable.	Stock trends are unprecedented. More rapid changes in stock abundance than have ever been seen previously, or a very long stretch of poor recruitment compared to previous patterns.	Extreme anomalies in multiple ecosystem indicators that are highly likely to impact the stock. Potential for cascading effects on other ecosystem components	Extreme anomalies in multiple performance indicators that are highly likely to impact the stock