

INTERNATIONAL PACIFIC



HALIBUT COMMISSION

Outcomes of the 97th Session of the IPHC Annual Meeting (AM097)

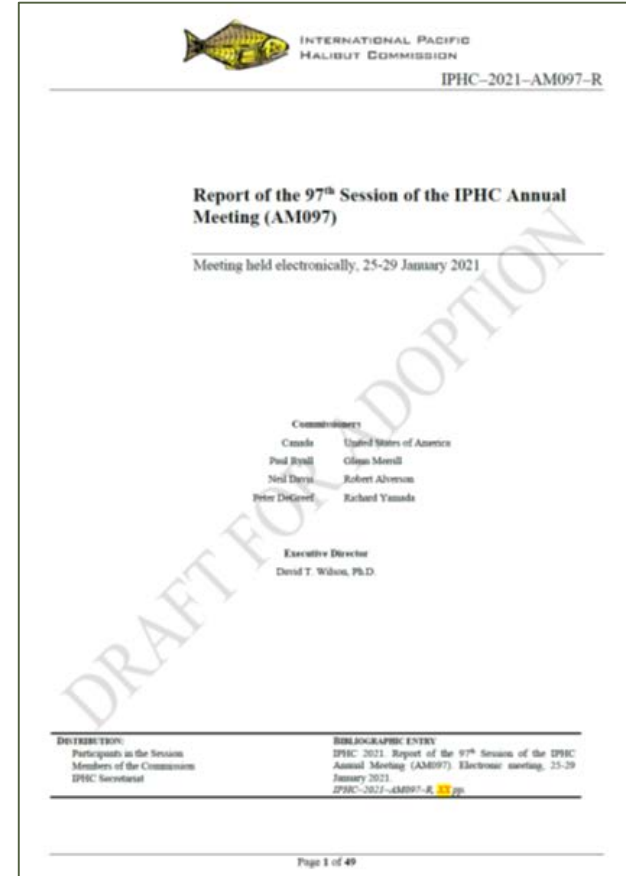
NPFMC meeting
Agenda item B9
8 February 2021



97th Session of the IPHC Annual Meeting (AM097)

- 25 - 29 January 2021 , IPHC HQ – Seattle, WA, USA.
- Held electronically (**270** participants; 216 in 2020)
- Open to public
- AM097 webpage:

<https://www.iphc.int/venues/details/97th-session-of-the-iphc-annual-meeting-am097>



Mortality limits for 2021

Contracting Party IPHC Regulatory Area	Mortality limit (TCEY) (metric tonnes)	Mortality limit (TCEY) (mlbs)
<u>Canada</u> Total: 2B	3,175	7.00
USA: 2A	748	1.65
USA: 2C	2,631	5.80
USA: 3A	6,350	14.00
USA: 3B	1,415	3.12
USA: 4A	930	2.05
USA: 4B	635	1.40
USA: 4CDE	1,805	3.98
<u>United States of America</u> Total	14,515	32.00
Total (IPHC Convention Area)	17,690	39.00



Mortality limits for 2020 to 2021

Contracting Party IPHC Regulatory Area	Mortality limit (TCEY) (mlbs)	Mortality limit (TCEY) (mlbs)	% change
Canada Total: 2B	6.83	7.00	2.49
USA: 2A	1.65	1.65	0
USA: 2C	5.85	5.80	-0.85
USA: 3A	12.20	14.00	14.75
USA: 3B	3.12	3.12	0
USA: 4A	1.75	2.05	17.14
USA: 4B	1.31	1.40	6.87
USA: 4CDE	3.90	3.98	2.05
United States of America Total	29.78	32.00	7.46
Total (IPHC Convention Area)	36.60	39.00	6.56



In millions of pounds	2A	2B	2C	3A	3B	4A	4B	4CDE	Total
Directed commercial discard mortality	0.03	0.17	NA	NA	0.11	0.12	0.05	0.08	0.56
O26 Non-directed discard mortality	0.10	0.23	0.09	1.14	0.42	0.24	0.12	2.20	4.54
Recreational	NA	0.04	0.94	1.53	0.01	0.02	0.00	0.00	2.54
Subsistence	NA	0.41	0.37	0.19	0.02	0.01	0.00	0.03	1.02
Total Non-FCEY	0.14	0.84	1.39	2.86	0.56	0.39	0.17	2.31	8.66
Directed commercial discard mortality	NA	NA	0.07	0.24	NA	NA	NA	NA	0.31
Recreational	0.61	0.92	0.81	1.95	NA	NA	NA	NA	4.29
Subsistence	0.03	NA	NA	NA	NA	NA	NA	NA	0.03
Commercial Landings	0.87	5.23	3.53	8.95	2.56	1.66	1.23	1.67	25.70
Total FCEY	1.51	6.15	4.41	11.14	2.56	1.66	1.23	1.67	30.34
TCEY	1.65	7.00	5.80	14.00	3.12	2.05	1.40	3.98	39.00
U26 Non-directed discard mortality	0.00	0.03	0.00	0.29	0.06	0.08	0.01	0.78	1.25
Total Mortality	1.65	7.03	5.80	14.29	3.18	2.13	1.41	4.76	40.25

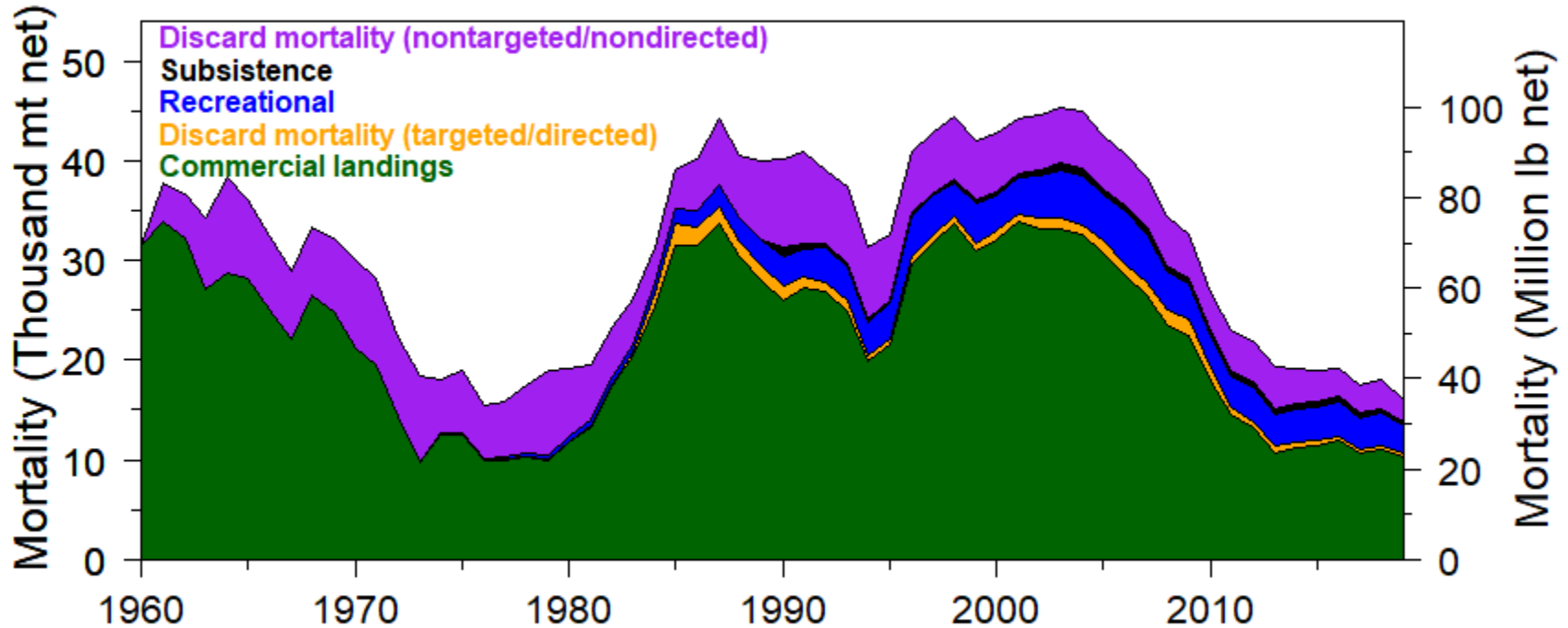


Assessment data summary

- After weak recruitments in 2006-10, the 2011 and 2012 year-classes are larger and now present throughout the stock, fishery, and survey
- Fishery and survey trends are consistent with individual growth within these year-classes
 - Numbers down slightly, biomass up slightly
- Stock distribution increased in Region 3, decreased in Region 2
- Size-at-age may be starting to improve at younger ages



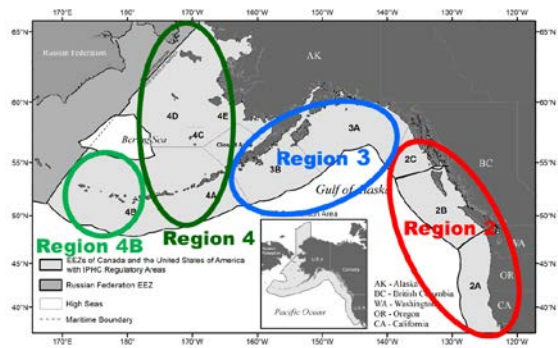
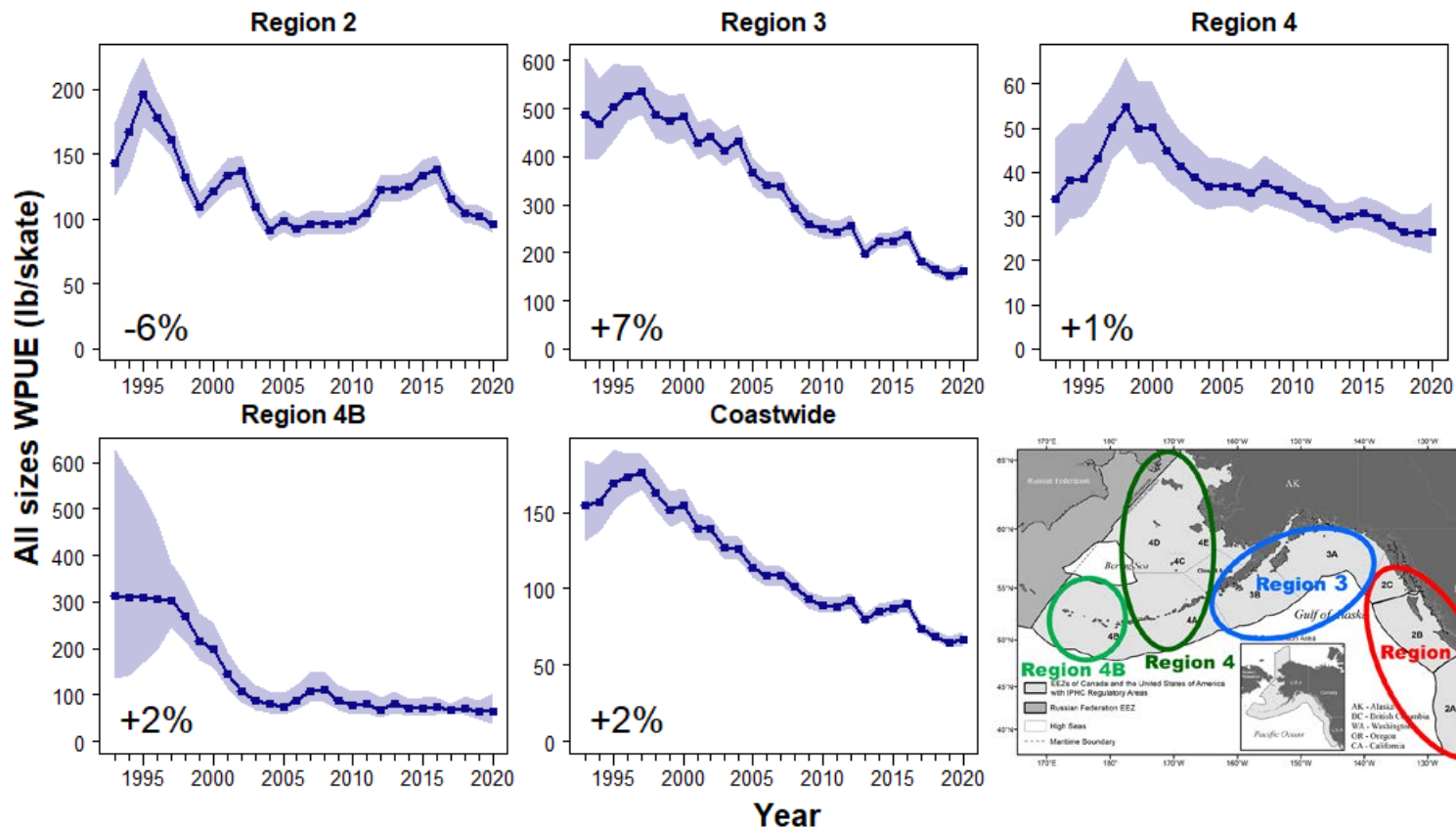
Historical mortality



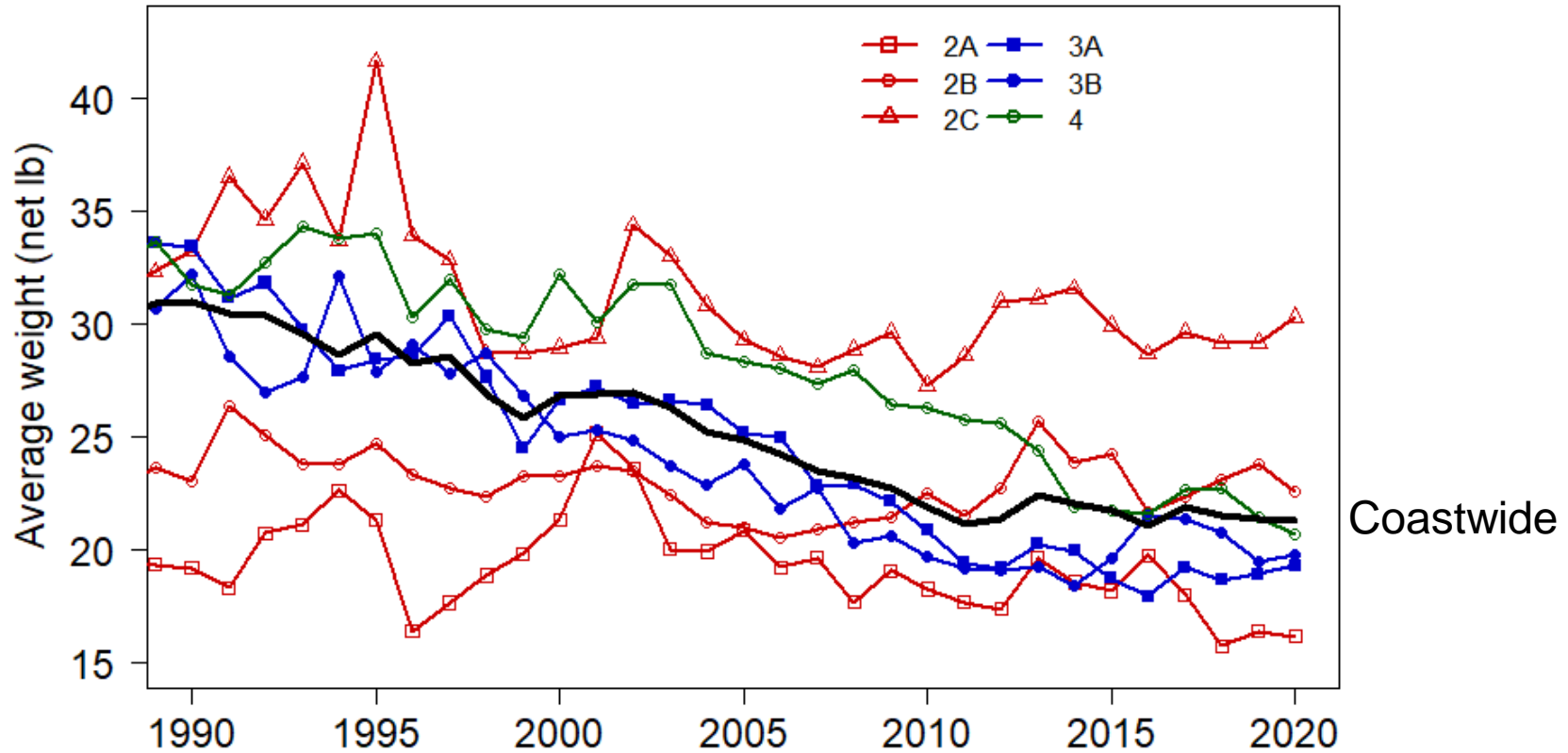
Reductions in 2020 due to: reduced mortality limits and many sectors below limits



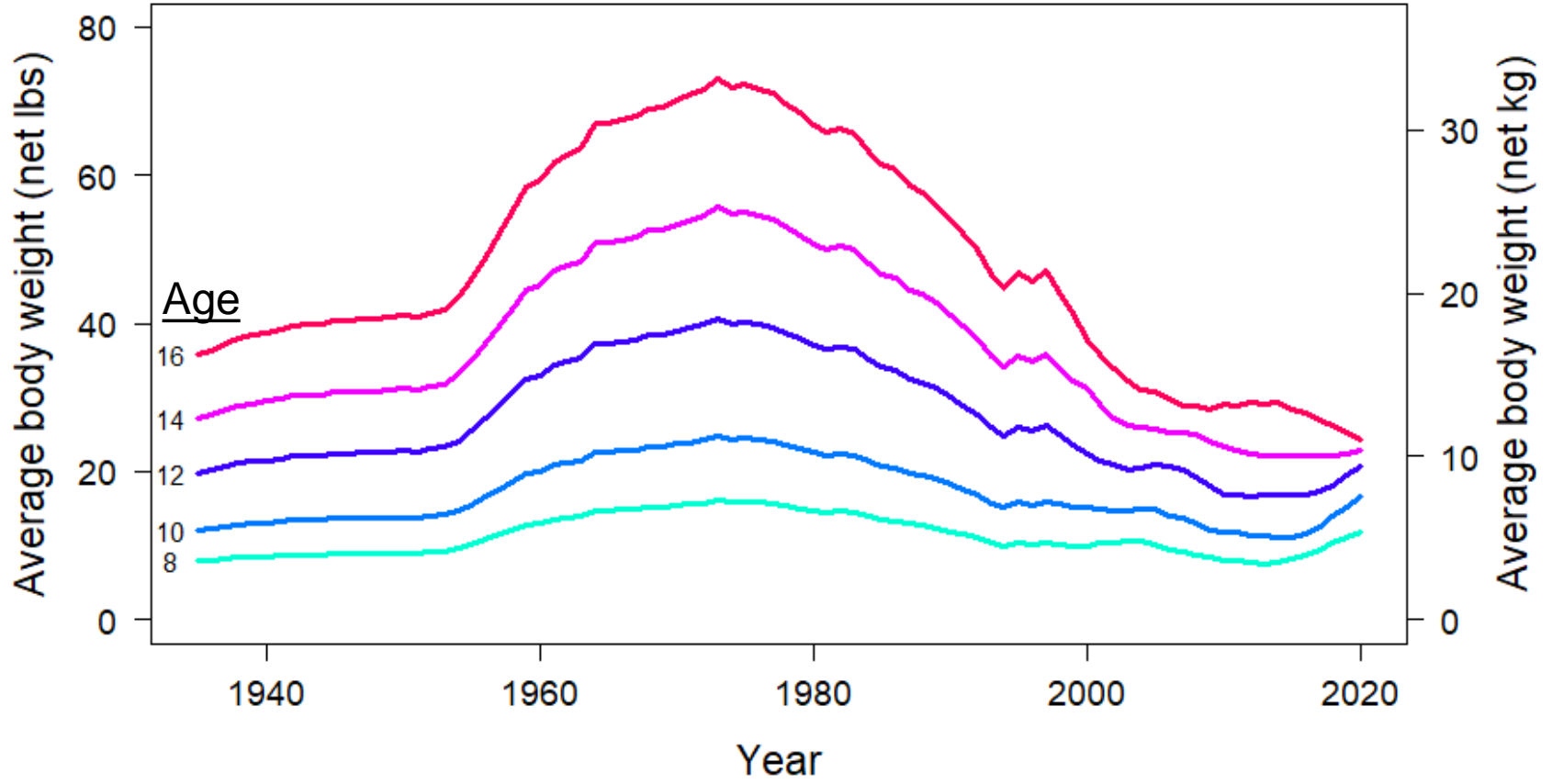
Modelled survey trends (all sizes WPUE)



Average landed fish weight



Reconstructed coastwide female weight-at-age

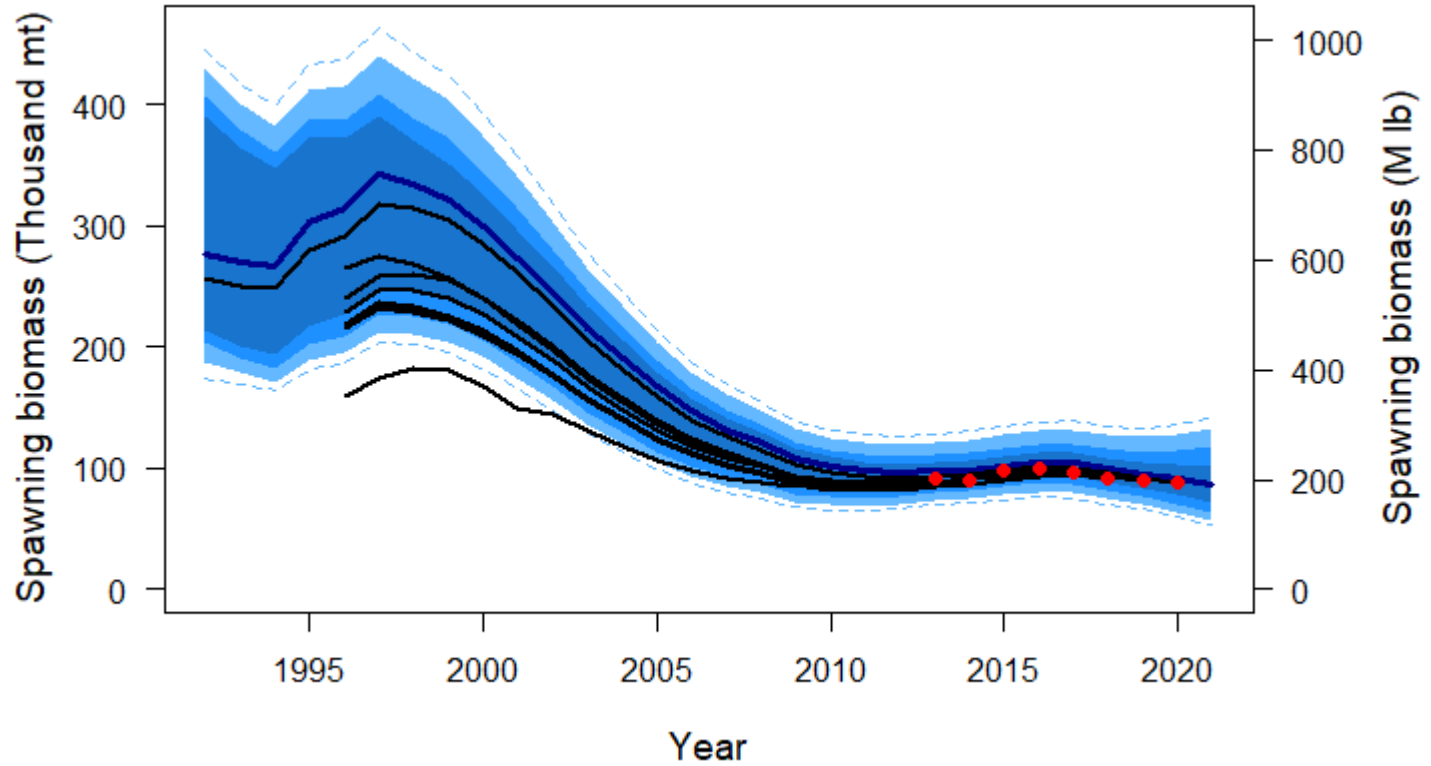


Modelling summary

- Trends very similar to recent assessments
- 2011 and 2012 year classes will not substantially contribute to spawning biomass until 2023-2024



Comparison with previous assessments



Assessment summary table

Indicators	Values	Trends	Status
Total mortality 2020: Retained catch 2020: Average mortality 2016-20:	35.50 MLBS, 16,103 T 29.65 MLBS, 13,449 T 39.59 MLBS, 17.959 T	MORTALITY DECREASED FROM 2019 TO 2020	2020 MORTALITY NEAR 100-YEAR LOW
SPR₂₀₂₀: P(SPR<43%): P(SPR<limit):	48% (34-65%) 38% LIMIT NOT SPECIFIED	FISHING INTENSITY DECREASED FROM 2019 TO 2020	FISHING INTENSITY BELOW REFERENCE LEVEL
SB₂₀₂₁ (Mlb): SB₂₀₂₁/SB₀: P(SB₂₀₂₁<SB₃₀): P(SB₂₀₂₁<SB₂₀):	192 MLBS (125–292) 33% (22-52%) 41% <1%	SB DECREASED 17% FROM 2016 TO 2021	NOT OVERFISHED
Biological stock distribution:	SEE TABLES AND FIGURES	REGION 4 INCREASING	REGION 4 NEAR HISTORICAL HIGH



For more data and assessment information

- Assessment and data overview documents are available through the [stock assessment page](#) of the IPHC's website:
 - [IPHC-2021-SA-01](#)
 - [IPHC-2021-SA-02](#)

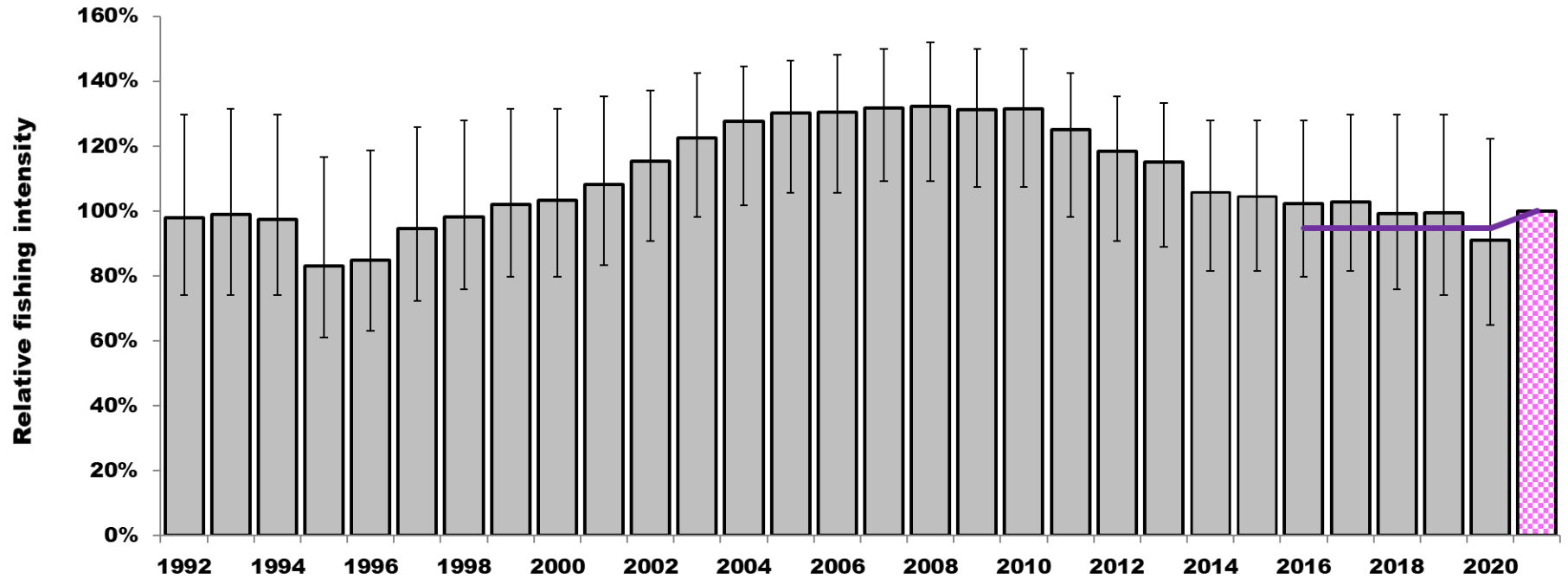


Adopted 2021 mortality limit (39.0 M lb)

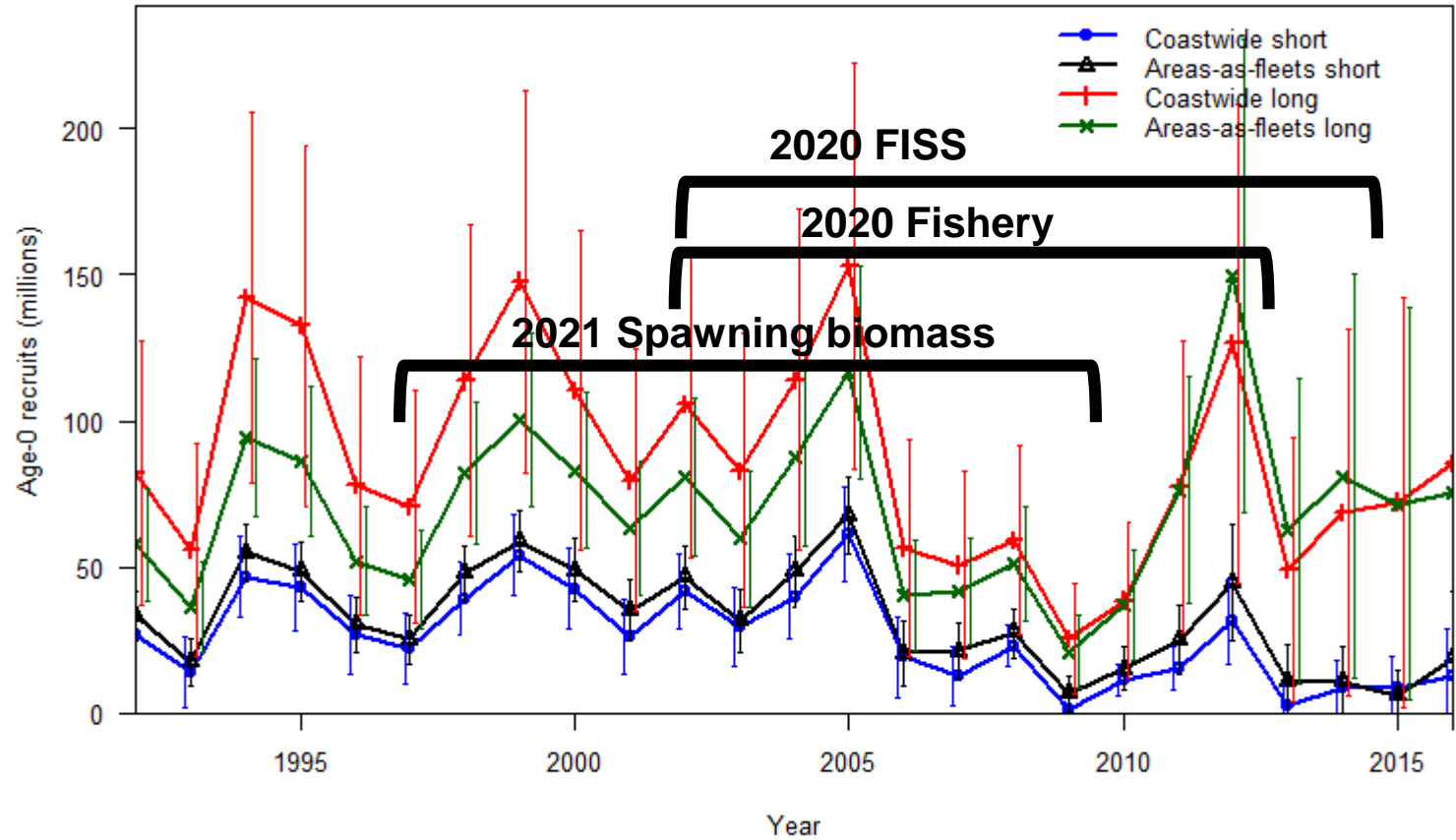
- Based on the IPHC's reference level of fishing intensity ($F_{43\%}$) adopted for 2021
 - Evaluated via the IPHC's MSE process
- Corresponds to projections of:
 - 65% probability of decrease in SB during 2021
 - 41% probability of dropping below $SB_{30\%}$ management trigger by 2022
 - 50% probability of fishery limit decrease in 2022



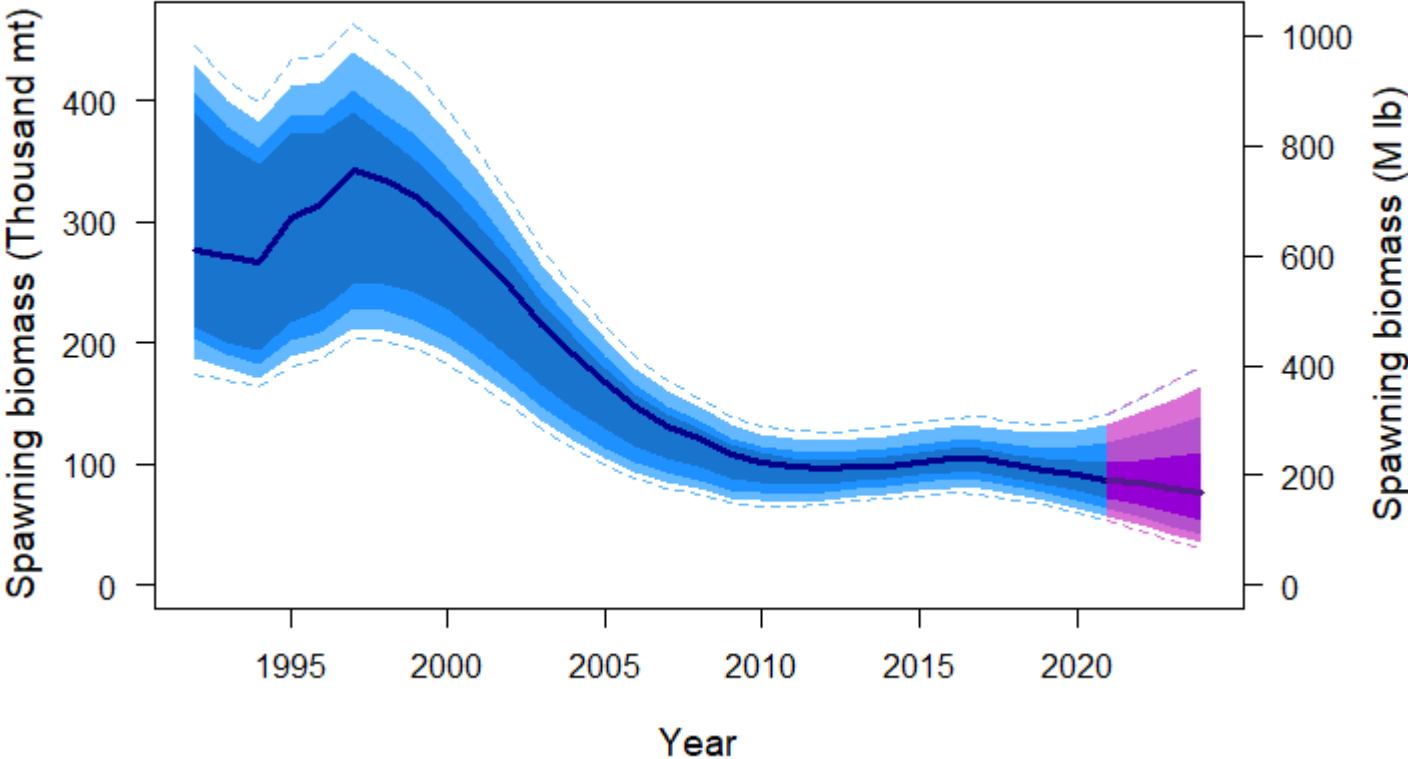
Recent and projected fishing intensity



Recruitment estimates



Projected stock trend



97th Session of the IPHC Annual Meeting (AM097)

- Other decisions:
 - Fishing periods
 - Charter Pacific halibut measures
 - 2021 Fishery-Independent Setline Survey (FISS)



Fishing Periods

- The Commission **ADOPTED** fishing periods for 2021 as provided below, thereby superseding Section 9 of the IPHC Pacific halibut fishery regulations:
 - All commercial fishing for Pacific halibut in all IPHC Regulatory Areas may begin no earlier than **6 March** and must cease on **7 December**.



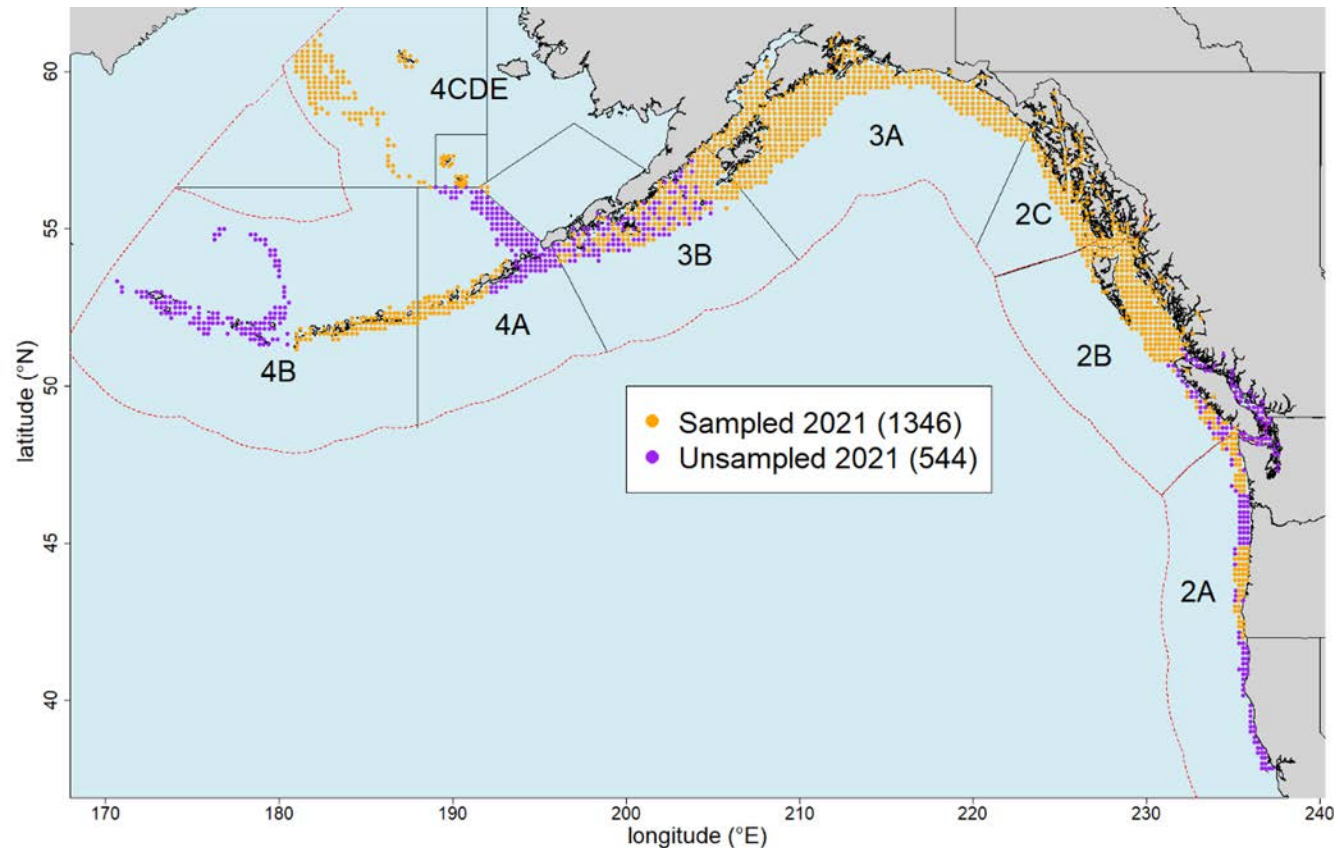
Charter Management Measures

The Commission **ADOPTED** charter management measures for IPHC Regulatory Areas 2C and 3A for 2021:

- IPHC Regulatory Area 2C – one-fish bag limit with size limit of less than or equal to 50 inches or greater than or equal to 72 inches
- IPHC Regulatory Area 3A – two-fish bag limit with one fish of any size and a second fish less than or equal to 32 inches, Wednesdays closed to retention of Pacific halibut, one trip per vessel and one trip per CHP per day (no annual limit). See PropB1 for additional detail.



2021 Fishery-Independent Setline Survey (FISS)



The Commission **NOTED** the updated information presented by the IPHC Secretariat on IPHC Regulatory Areas 4B and 2A FISS design, costs and estimated revenues. No further amendments to the 2021 FISS design approved at the [9th Special Session of the Commission \(SS09\)](#) were made.



Looking ahead

- [97th Session of the IPhc Interim Meeting](#) (IM097)
30 Nov – 1 Dec 2021 in Seattle, WA
- [98th Session of the IPhc Annual Meeting](#) (AM098)
24-28 January 2022 in Seattle/Bellevue, WA, USA.



Meeting materials and Report

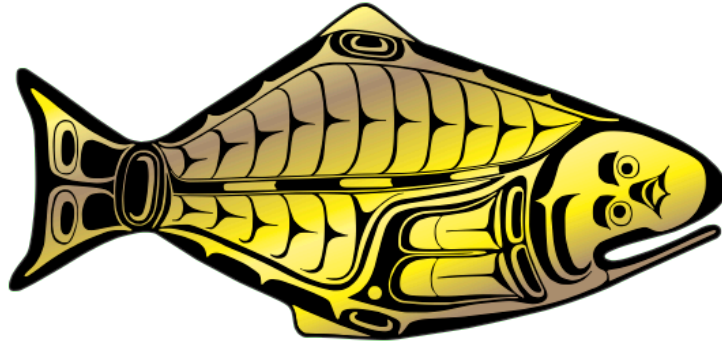
- 97th Session of the IPHC Annual Meeting (AM097) materials available at:

<https://www.iphc.int/venues/details/97th-session-of-the-iphc-annual-meeting-am097>

- AM097 Report
 - In review



INTERNATIONAL PACIFIC



HALIBUT COMMISSION

