

Appendix C7: Results for Model 6

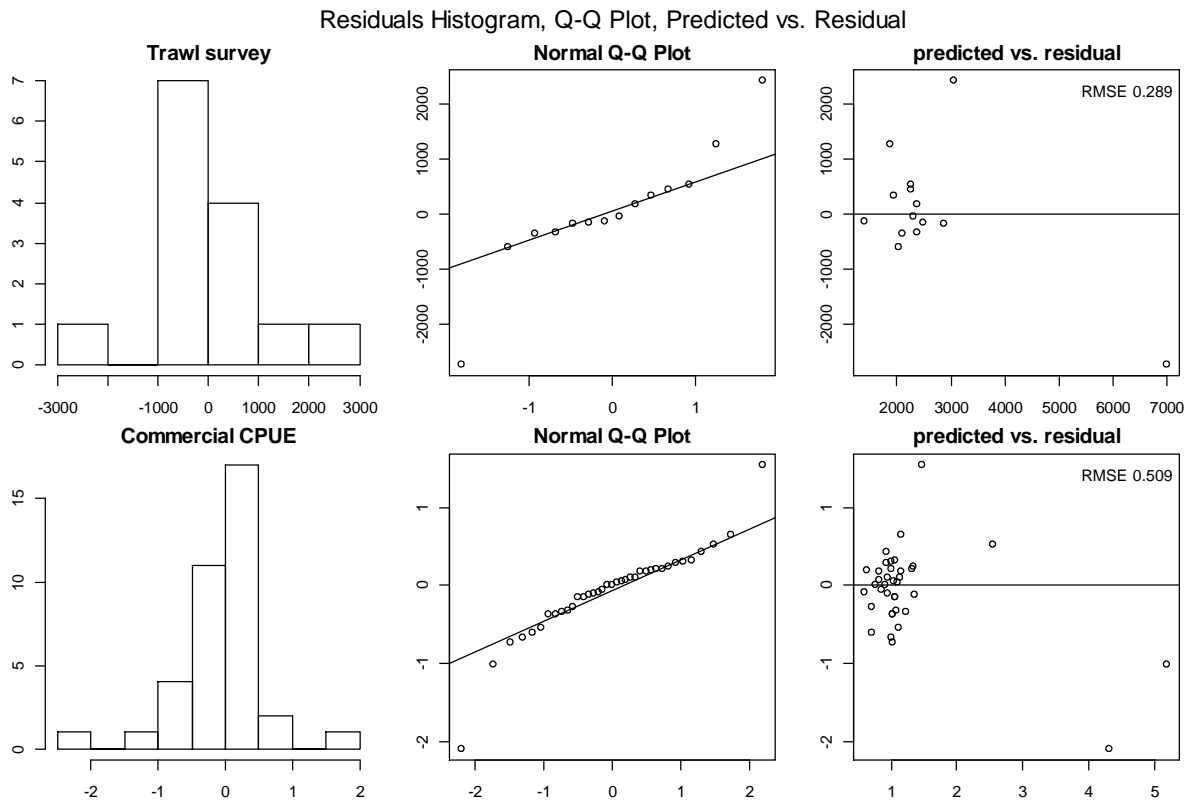


Figure C7-1. QQ plots of trawl survey abundance and commercial CPUE residuals.

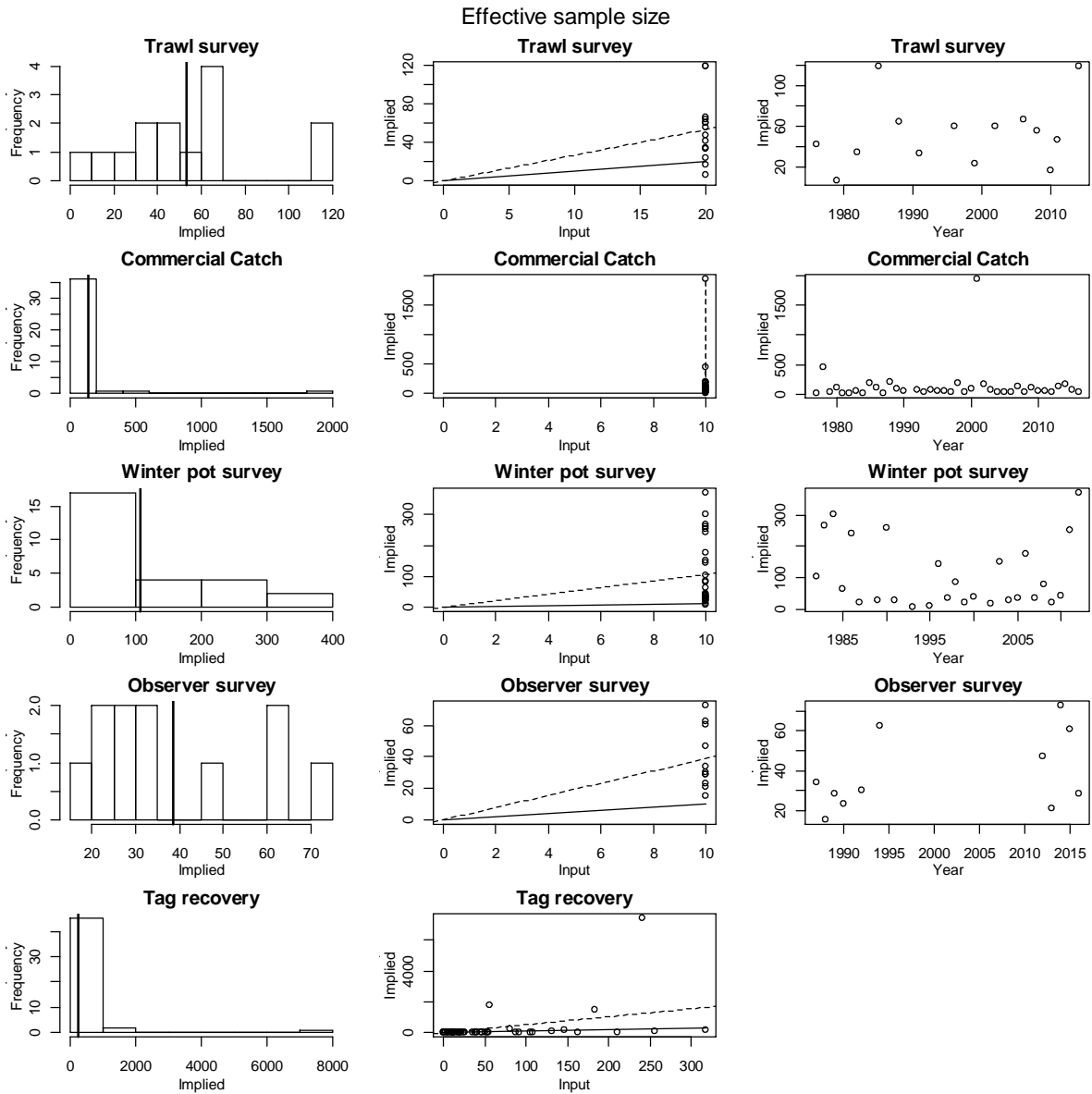


Figure C7-2: Implied effective sample sizes. Figures in the first column show implied effective sample size (x-axis) vs. frequency (y-axis). Vertical solid line is the mean implied effective sample size. The second column shows input sample sizes (x-axis) vs. implied effective sample sizes (y-axis). Dashed line indicates the linear regression slope, and solid line is 1:1 line. The third column shows years (x-axis) vs. implied effective sample sizes (y-axis).

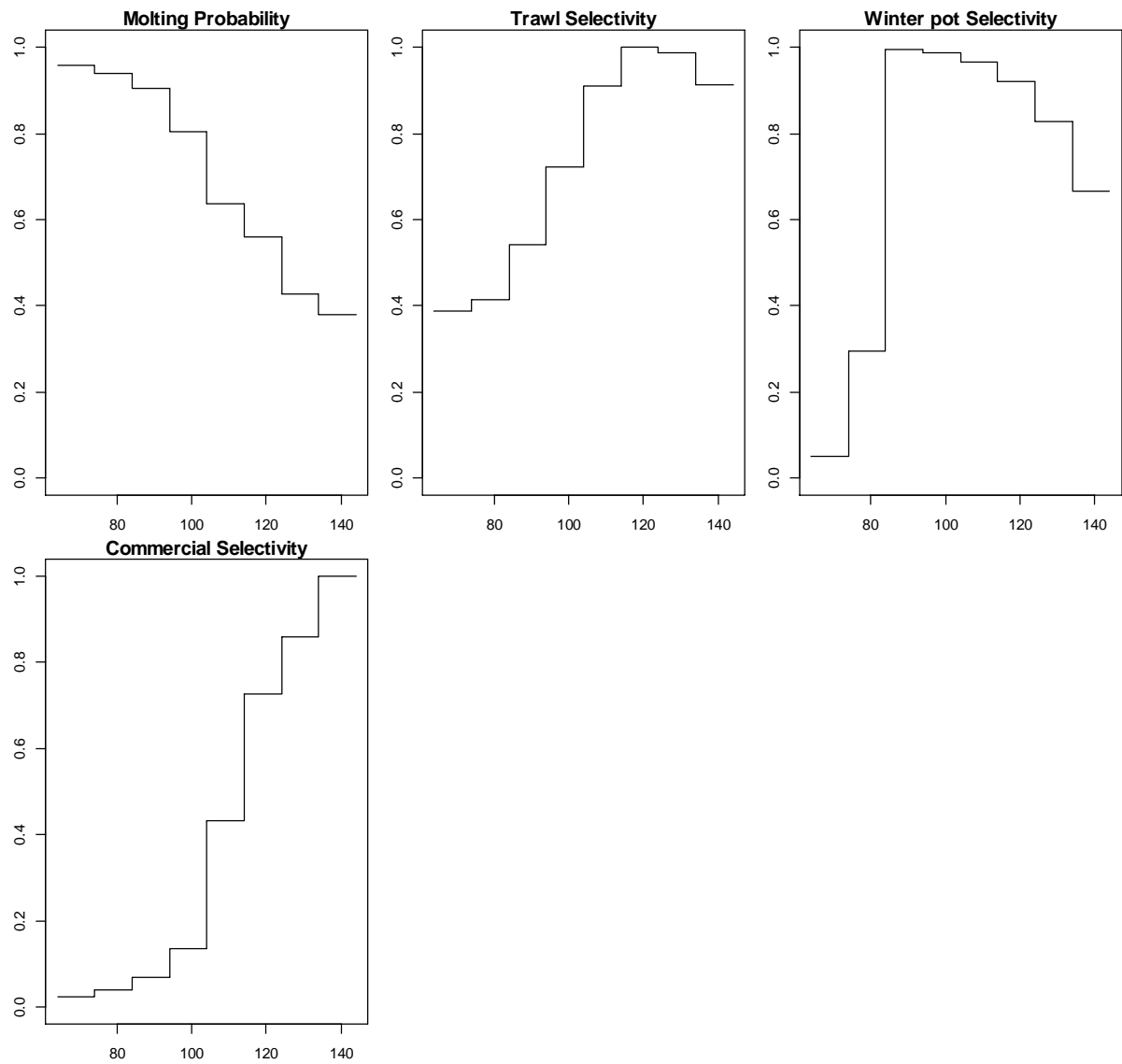


Figure C7-3. Model estimated annual molting probability, trawl survey selectivity, winter pot survey selectivity, and summer commercial fishery selectivity. X-axis is carapace length (mm).

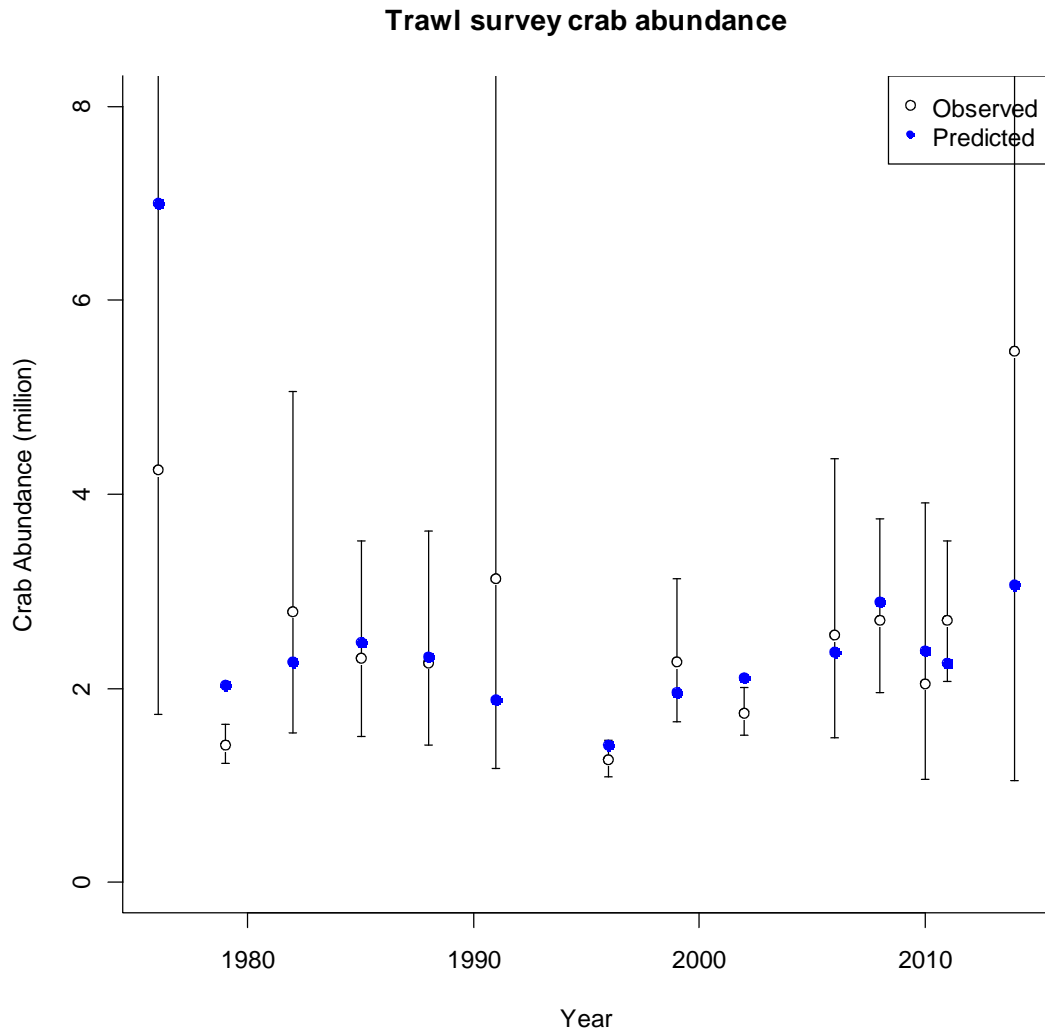


Figure C7-4. Observed and model estimated trawl survey male abundances over time with 95% confidence intervals (crab ≥ 74 mm CL).

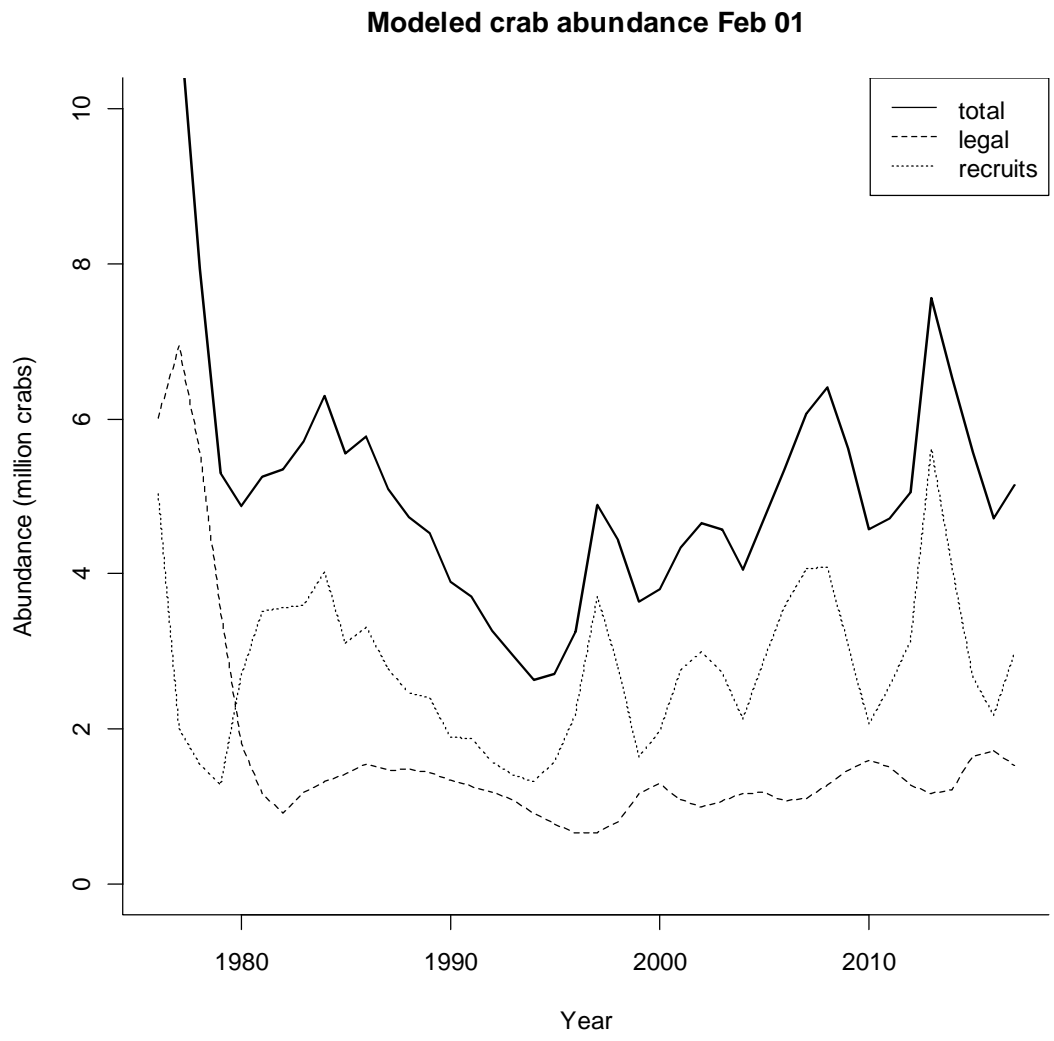


Figure C7-5. Estimated abundance of total, legal, and recruit males during 1976-2016.

MMB Feb 01

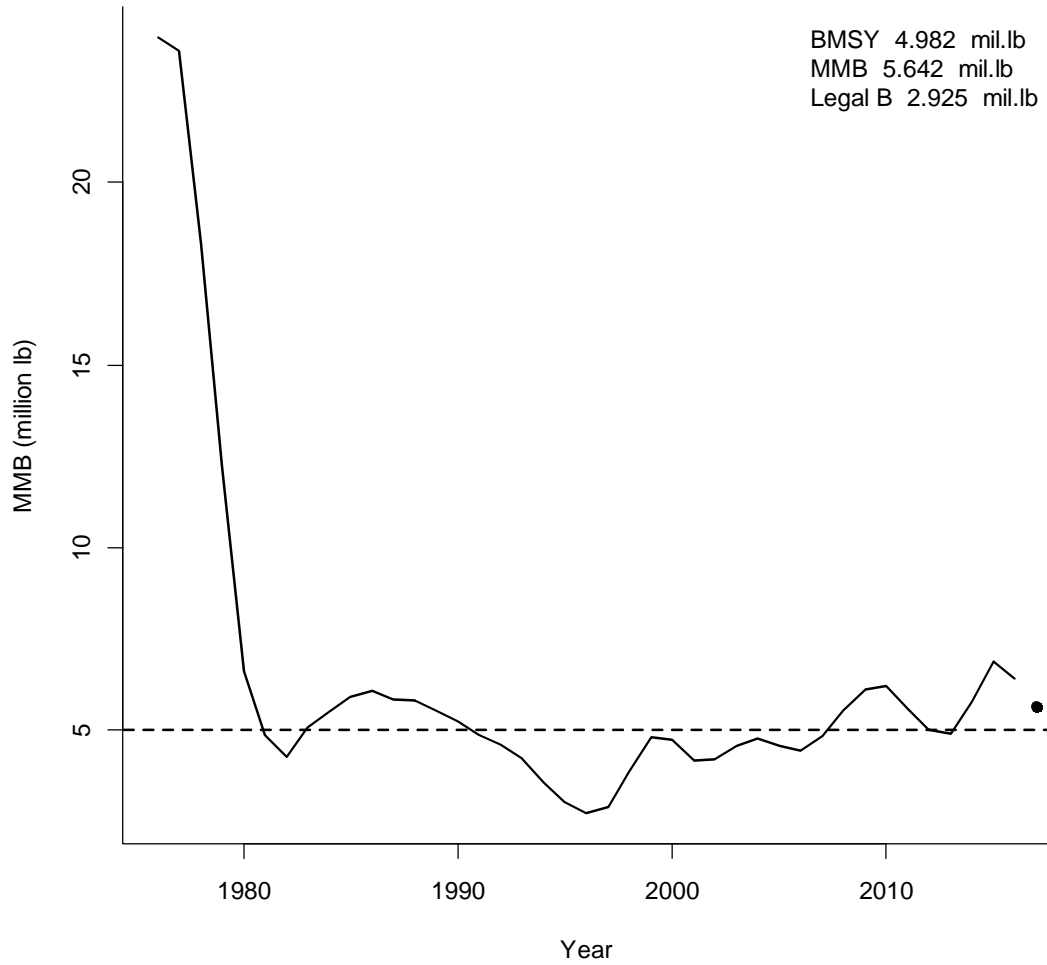


Figure C7-6. Estimated mature male biomass from 1976-2016. The dashed line shows B_{msy} (Average MMB of 1980-2016).

Summer commercial standardized cpue

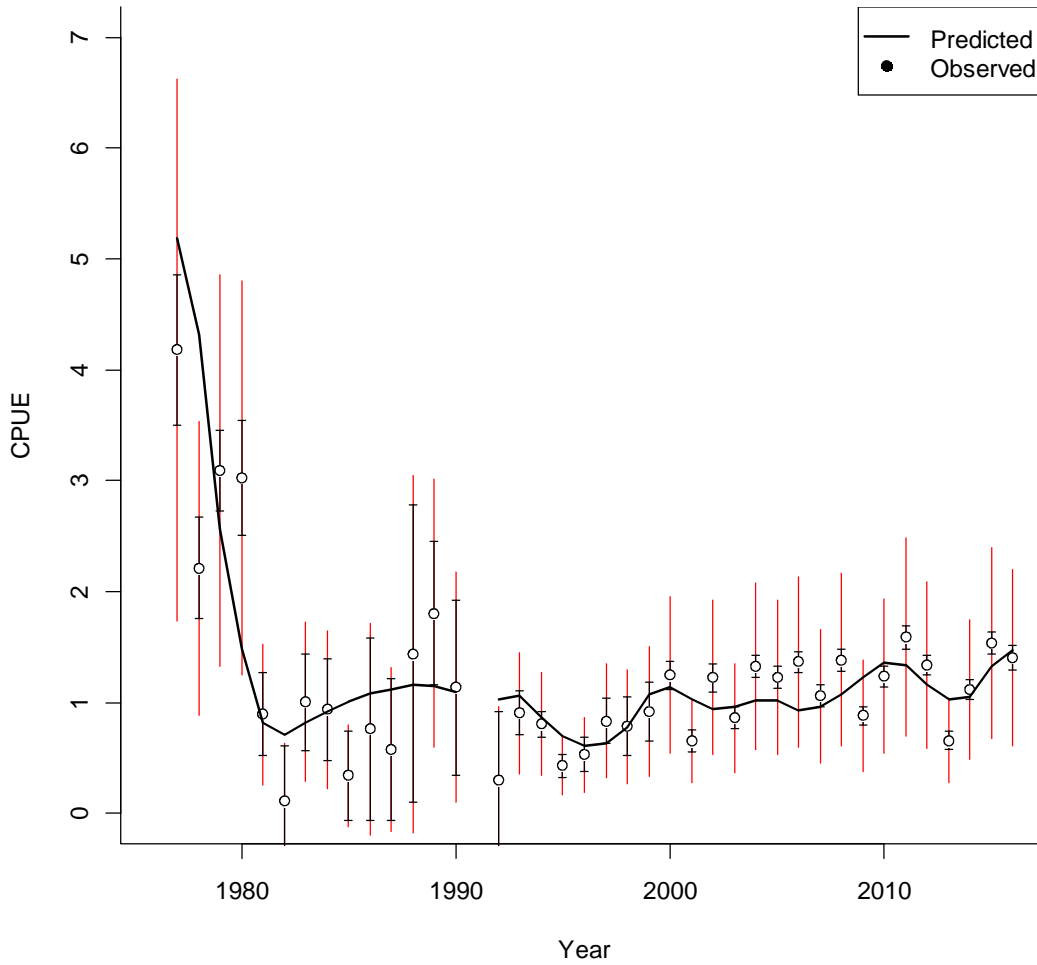


Figure C7-7. Su Summer commercial fishery standardized cpue during 1977-2016.

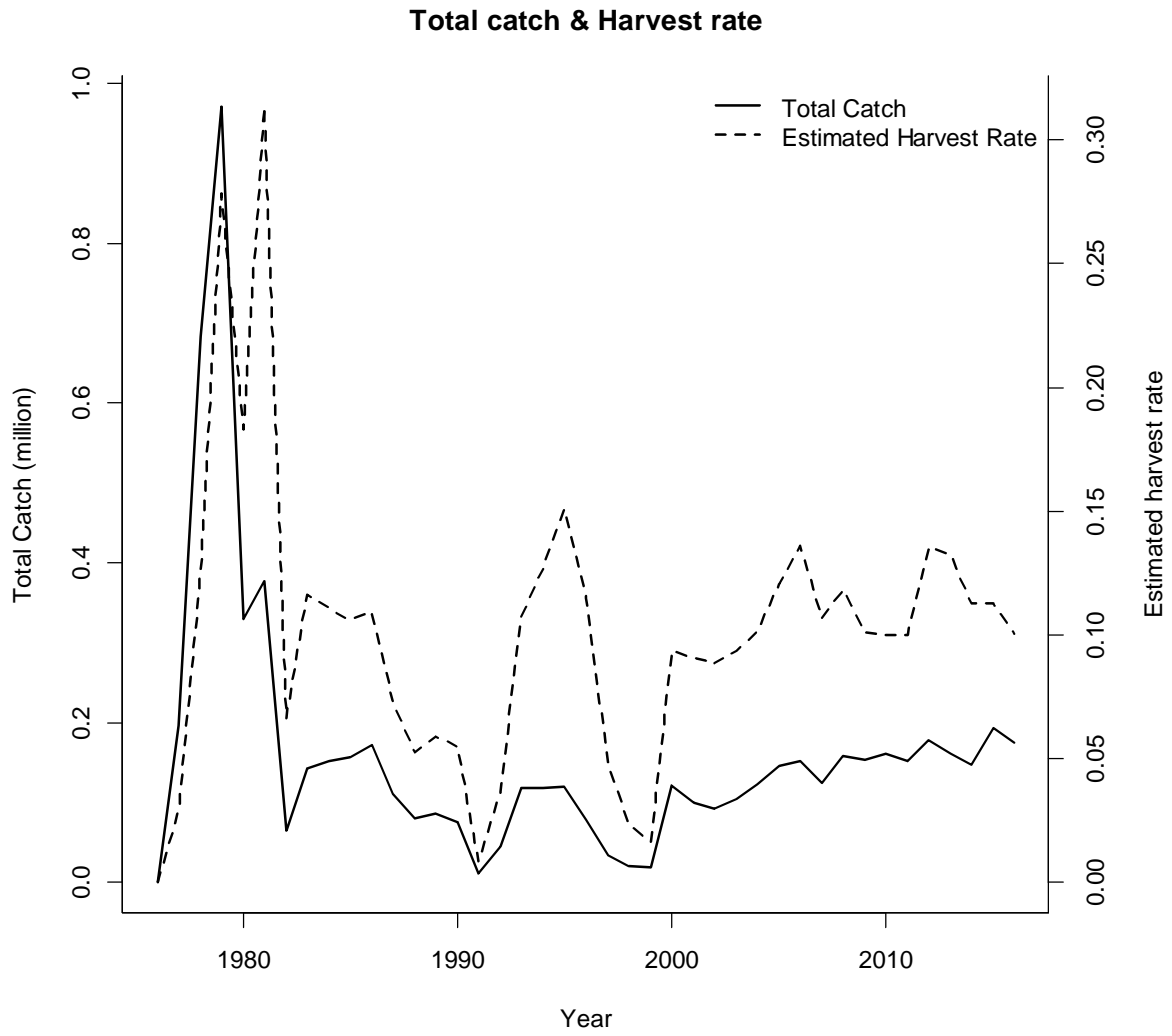


Figure C7-8. Total catch and estimated harvest rates during 1976-2016.

commercial harvest length: observed vs predicted

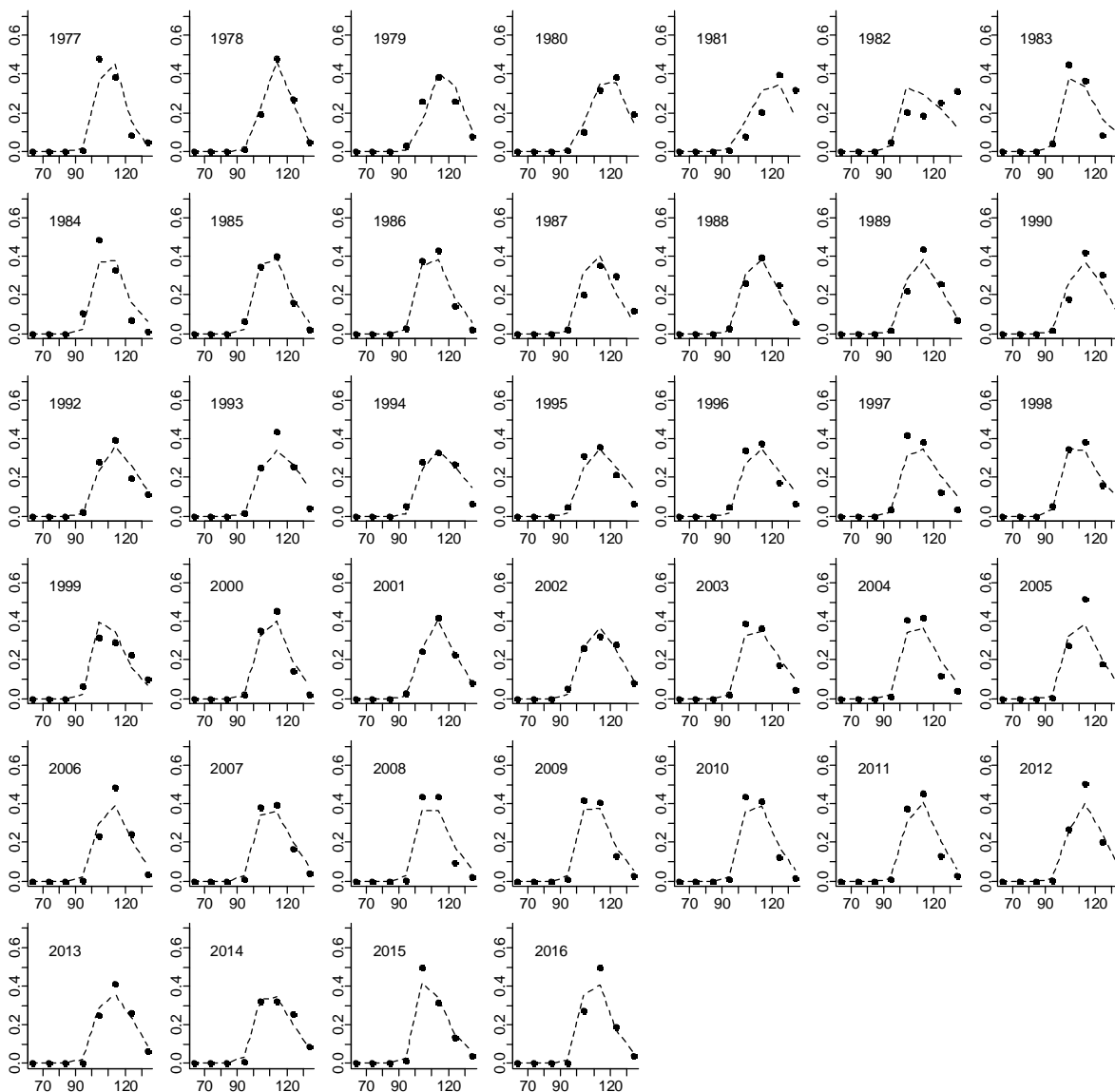


Figure C7-9. Predicted (dashed line) vs. observed (black dots) length class proportions for commercial catch.

Winter pot length: observed vs predicted

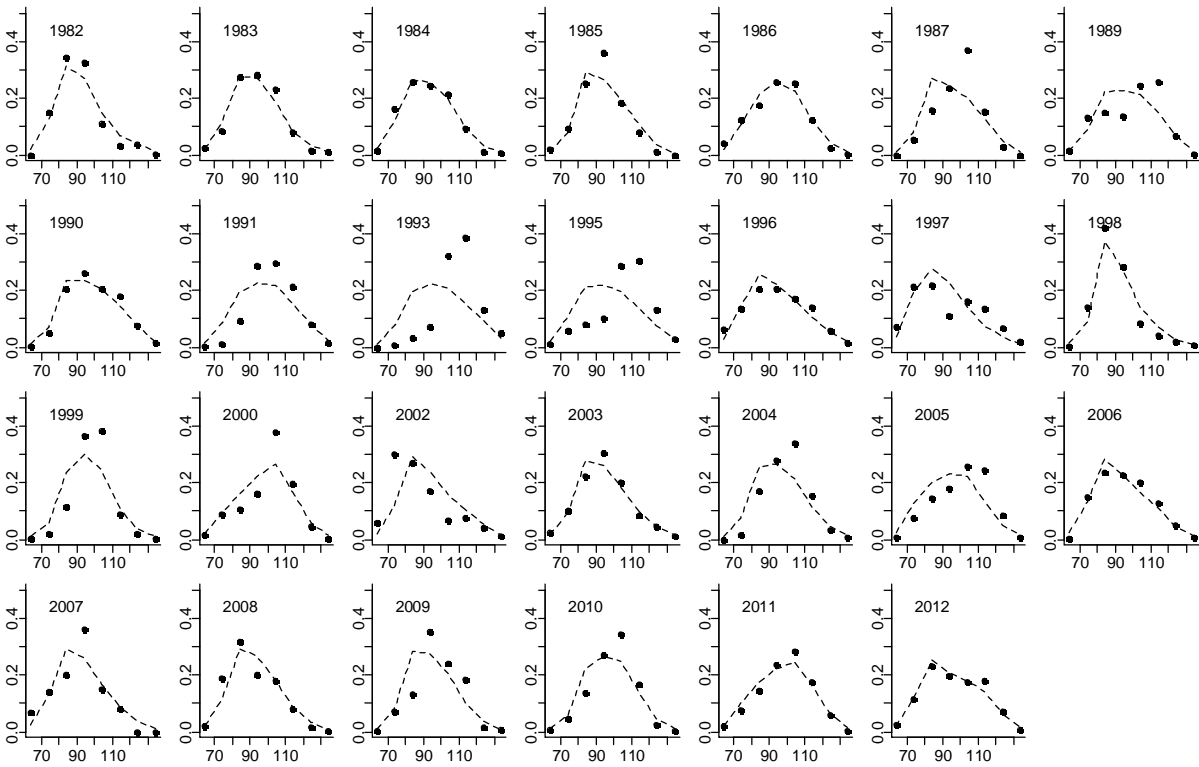


Figure C7-10. Predicted (dashed line) vs. observed (black dots) length class proportions for the winter pot survey.

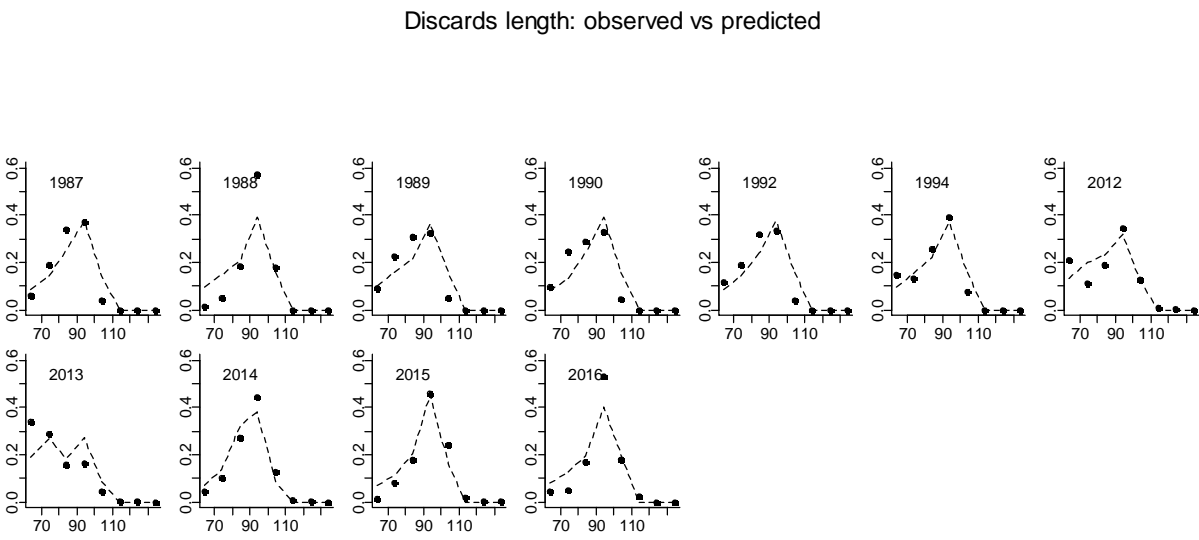
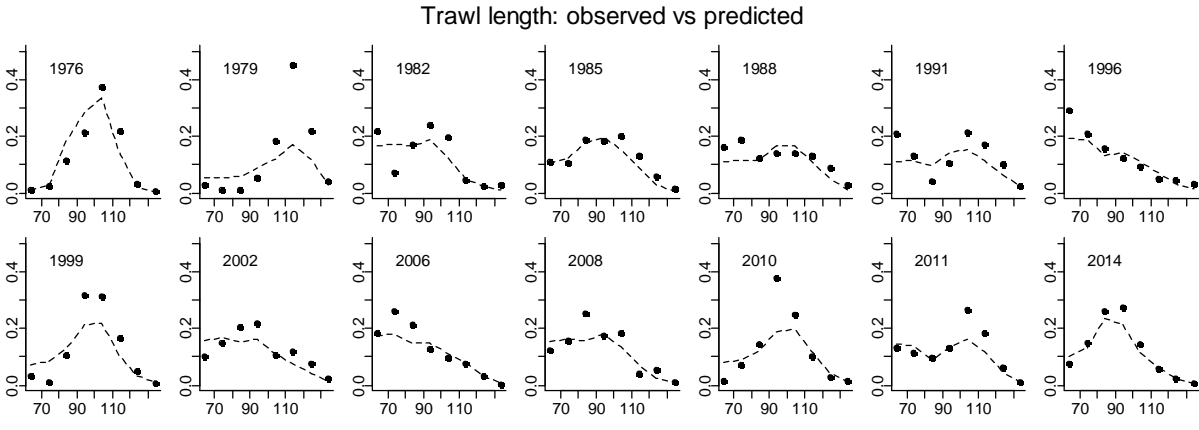


Figure C7-11. Predicted (dashed line) vs. observed (black dots) length class proportions for the trawl survey and observer survey.

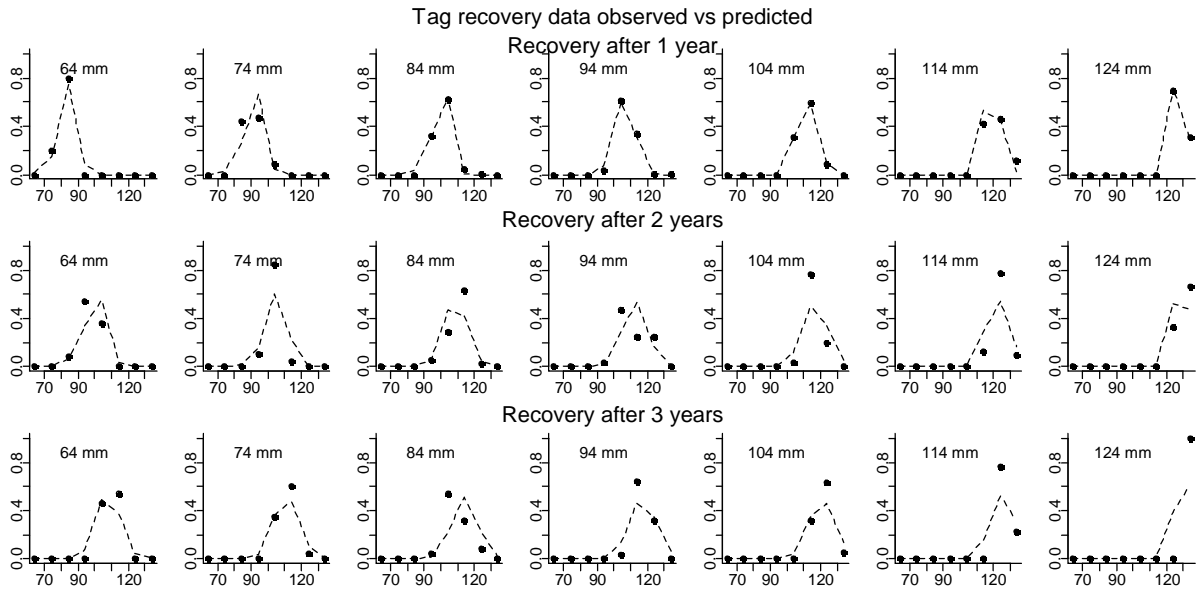


Figure C7-12. Predicted (dashed line) vs. observed (black dots) length class proportions for tag recovery data.

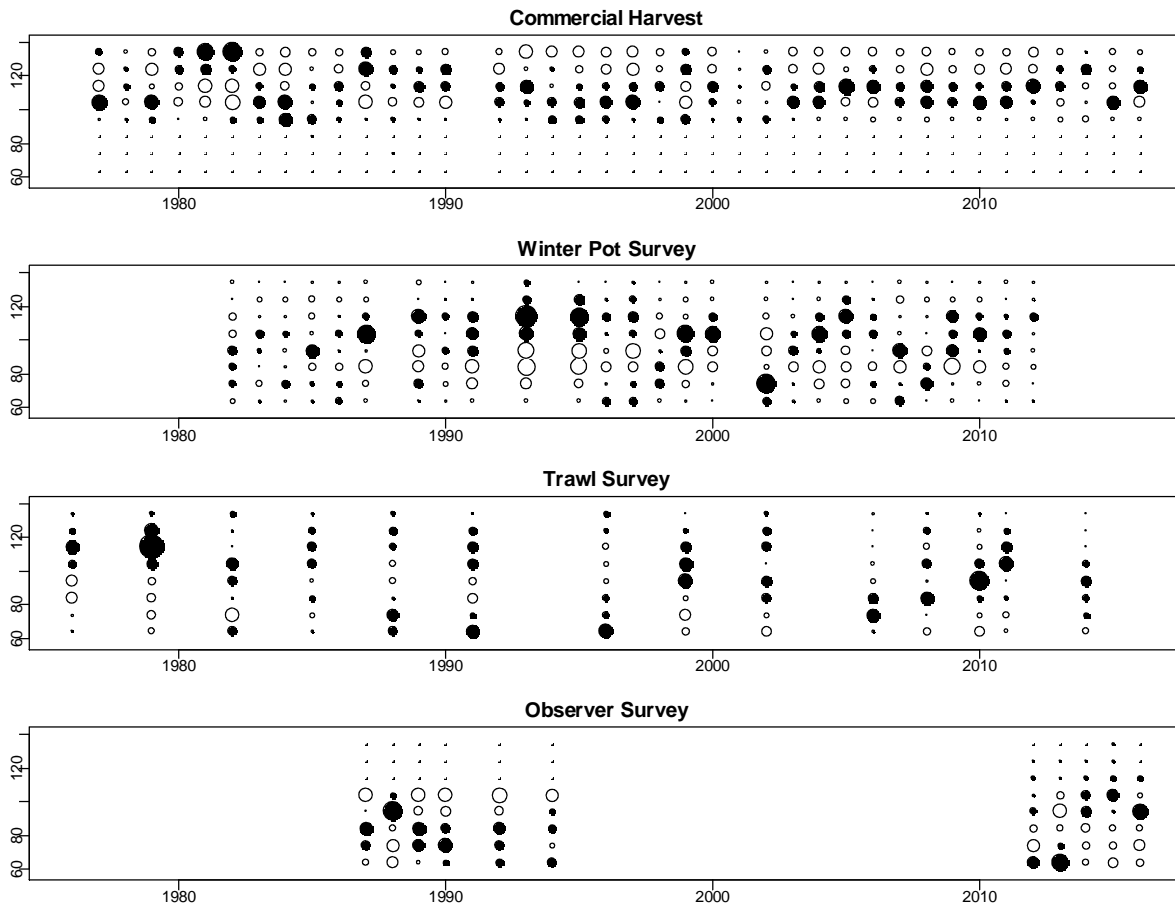


Figure C7-13. Bubble plots of predicted and observed length proportions. Black circle indicates model estimates lower than observed, white circle indicates model estimates higher than observed. Size of circle indicates degree of deviance (larger circle = larger deviance).

Table C7-1 . Summary of parameter estimates for a length-based stock synthesis population model of Norton Sound red king crab.

name	Estimate	std.dev
log_q1	-6.407	0.453
log_q2	-6.223	0.500
log_N76	9.650	0.255
R0	7.395	0.302
log_R76	-0.228	0.413
log_R77	-0.628	0.367
log_R78	-0.740	0.360
log_R79	0.331	0.332
log_R80	0.386	0.314
log_R81	0.344	0.285
log_R82	0.366	0.336
log_R83	0.525	0.293
log_R84	0.010	0.313
log_R85	0.364	0.286
log_R86	-0.051	0.305
log_R87	-0.041	0.259
log_R88	-0.049	0.270
log_R89	-0.429	0.297
log_R90	-0.245	0.260
log_R91	-0.591	0.300
log_R92	-0.601	0.306
log_R93	-0.671	0.307
log_R94	-0.365	0.280
log_R95	-0.017	0.246
log_R96	0.570	0.227
log_R97	-0.211	0.332
log_R98	-0.674	0.326
log_R99	-0.100	0.320
log_R00	0.205	0.285
log_R01	0.182	0.267
log_R02	0.029	0.324
log_R03	-0.301	0.350
log_R04	0.304	0.263
log_R05	0.411	0.244
log_R06	0.529	0.264

name	Estimate	std.dev
log_R07	0.476	0.259
log_R08	0.011	0.319
log_R09	-0.384	0.313
log_R10	0.161	0.250
log_R11	0.279	0.297
log_R12	1.010	0.241
log_R13	0.120	0.345
log_R14	-0.076	0.416
log_R15	-0.212	0.434
a1	2.050	4.300
a2	3.037	3.956
a3	4.568	3.704
a4	4.713	3.678
a5	4.647	3.664
a6	3.646	3.688
a7	1.695	4.020
r1	10.000	0.669
r2	9.797	0.733
mol.1	0.957	0.038
mol.2	0.939	0.030
mol.3	0.906	0.027
mol.4	0.804	0.033
mol.5	0.638	0.036
mol.6	0.561	0.044
mol.7	0.428	0.068
mol.8	0.381	0.159
st.sel1	0.389	0.135
st.sel2	0.414	0.121
st.sel3	0.542	0.142
st.sel4	0.723	0.164
st.sel5	0.911	0.158
st.sel6	1.000	0.001
st.sel7	0.987	0.255
st.sel8	0.913	0.550
log_φ _w	-2.421	0.357

name	Estimate	std.dev
Sw1	0.053	0.026
Sw2	0.296	0.075
sc.sel1	0.025	0.017
sc.sel2	0.040	0.025
sc.sel3	0.071	0.042
sc.sel4	0.136	0.074
sc.sel5	0.433	0.211
sc.sel6	0.726	0.306
sc.sel7	0.860	0.265
sc.sel8	1.000	0.001
w ² _t	0.075	0.023
q	0.806	0.143
ms		
σ	0.444	0.052
β ₁	4.147	0.238
β ₂	9.758	0.987