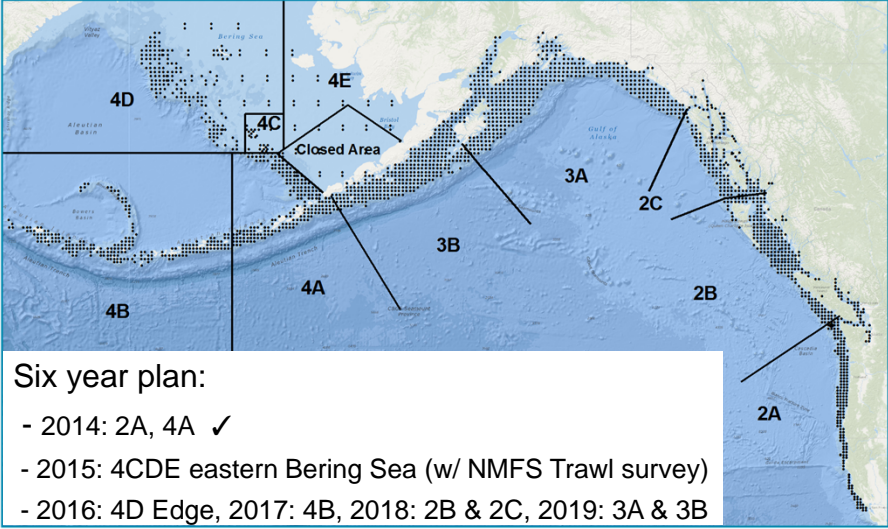


2014 Interim Meeting

- Informational meeting only
- 2-3 December, 2014, Seattle
 - Open to the public
- Presentations on:
 - 2014 Fishery summary
 - IPHC Survey expansion
 - Accounting for and managing all sources of removals
 - Management Strategy Evaluation process
 - Stock assessment, apportionment and catch table results for 2015




Setline Survey Expansion



Six year plan:


- 2014: 2A, 4A ✓
- 2015: 4CDE eastern Bering Sea (w/ NMFS Trawl survey)
- 2016: 4D Edge, 2017: 4B, 2018: 2B & 2C, 2019: 3A & 3B



2014 IPHC Interim Meeting Summary Slide 3

Stock assessment summary

- Coastwide survey and fishery trends continue to be stable
 - But there are important differences among areas
- Improved ensemble of models for 2014
 - Some new perspective on historical and recent trends
- 2014 results somewhat more optimistic than recent assessments



2014 IPHC Interim Meeting Summary Slide 4

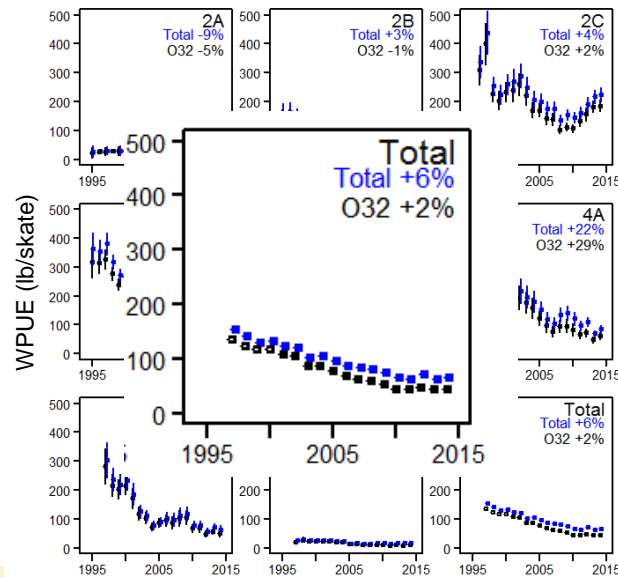
Recent removals (M lb)

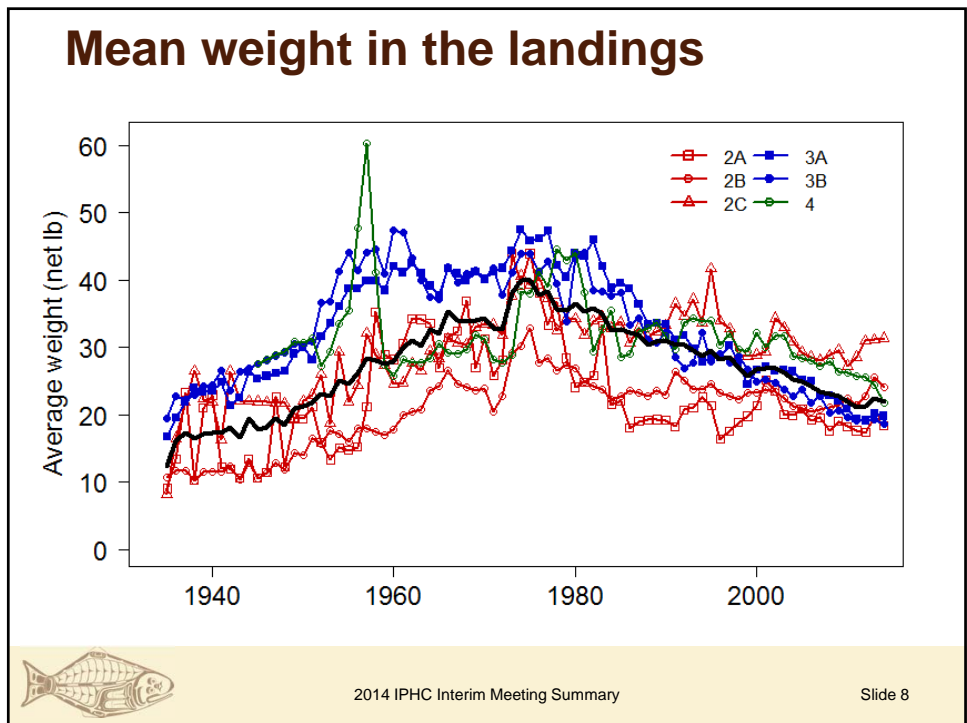
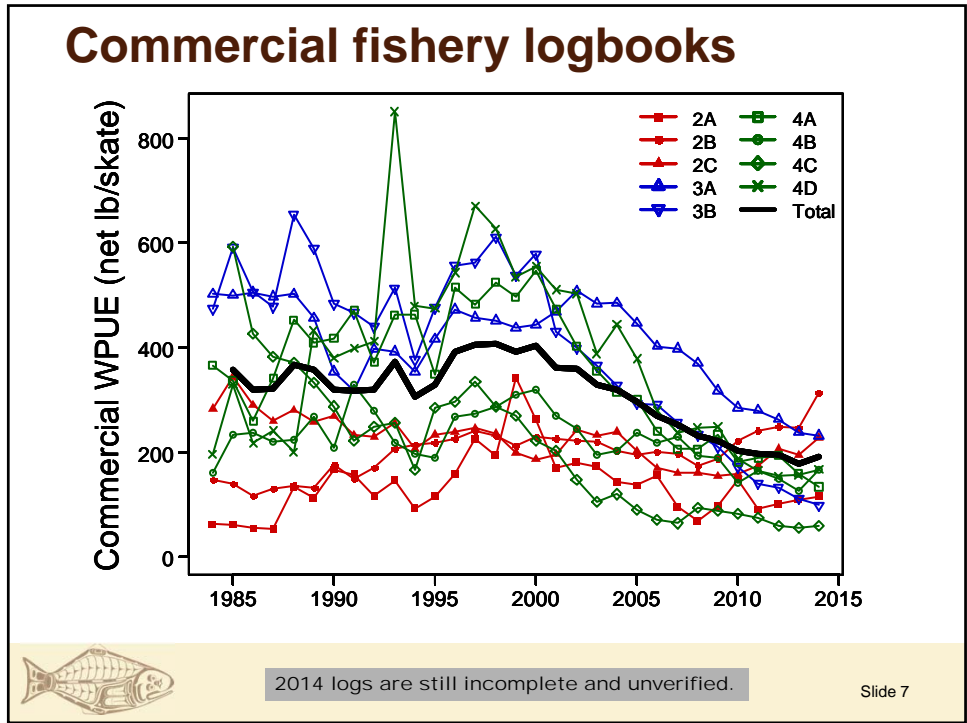
Year	Landings	Wastage	Sport	Pers./ Sub.	Bycatch	Total
2010	49.72	3.21	7.85	1.24	10.30	72.36
2011	39.51	2.46	7.10	1.14	9.42	59.64
2012	31.99	1.67	6.77	1.14	10.10	51.67
2013	29.04	1.43	7.59	1.14	8.84	48.04
2014	23.69	1.29	7.08	1.14	9.32	42.51

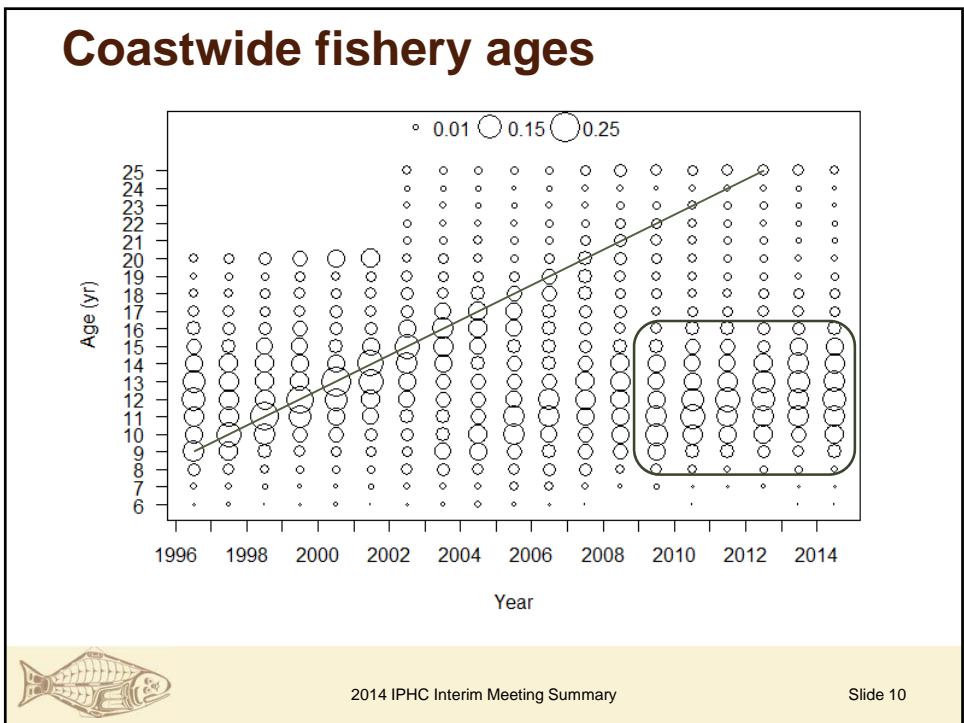
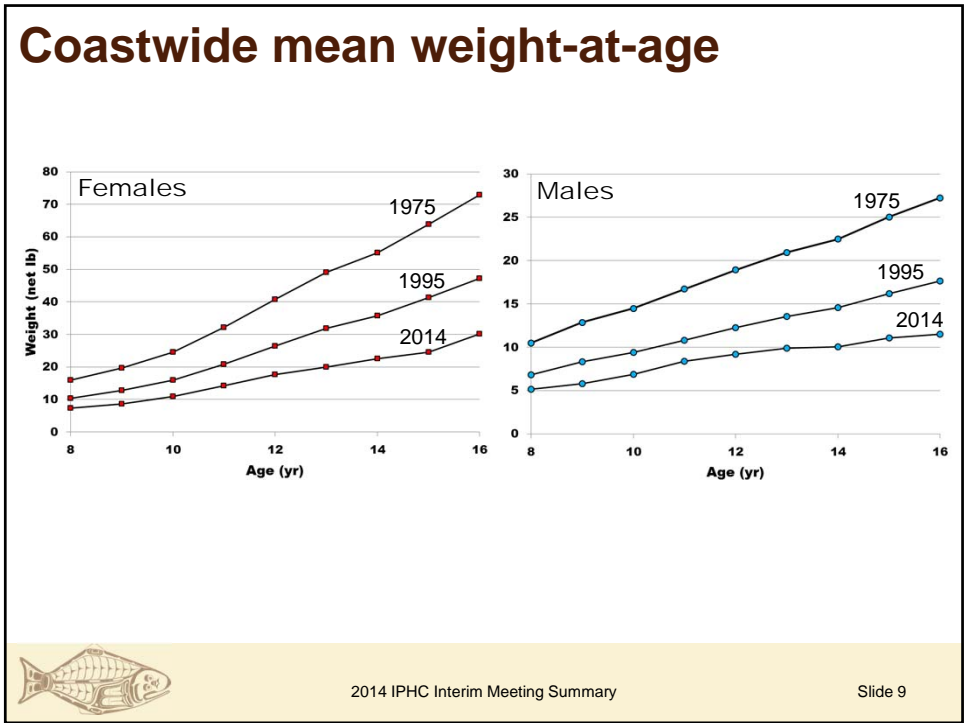
5-yr change: -52% -60% -10% -8% -10% -41%



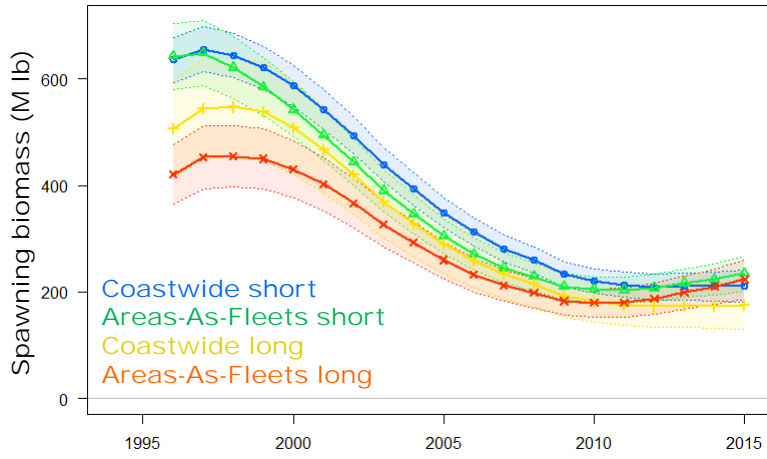
Survey Weight-Per-Unit-Effort







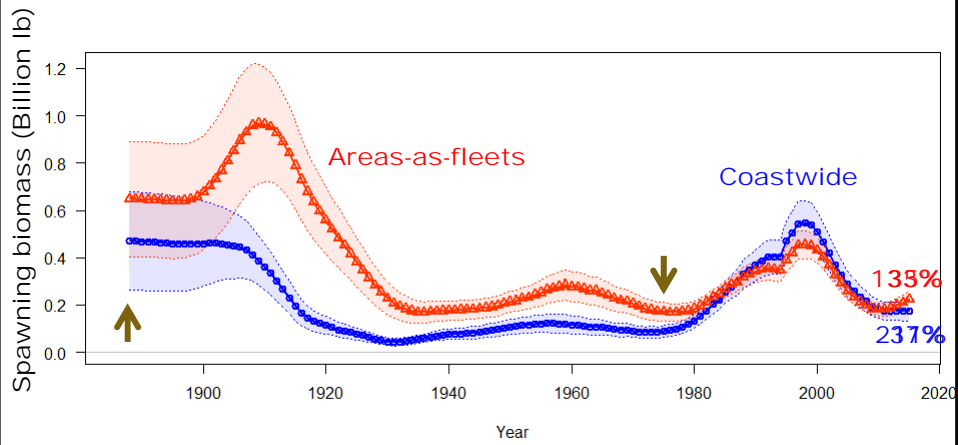
The 2014 Assessment: 4 models



2014 IPHC Interim Meeting Summary

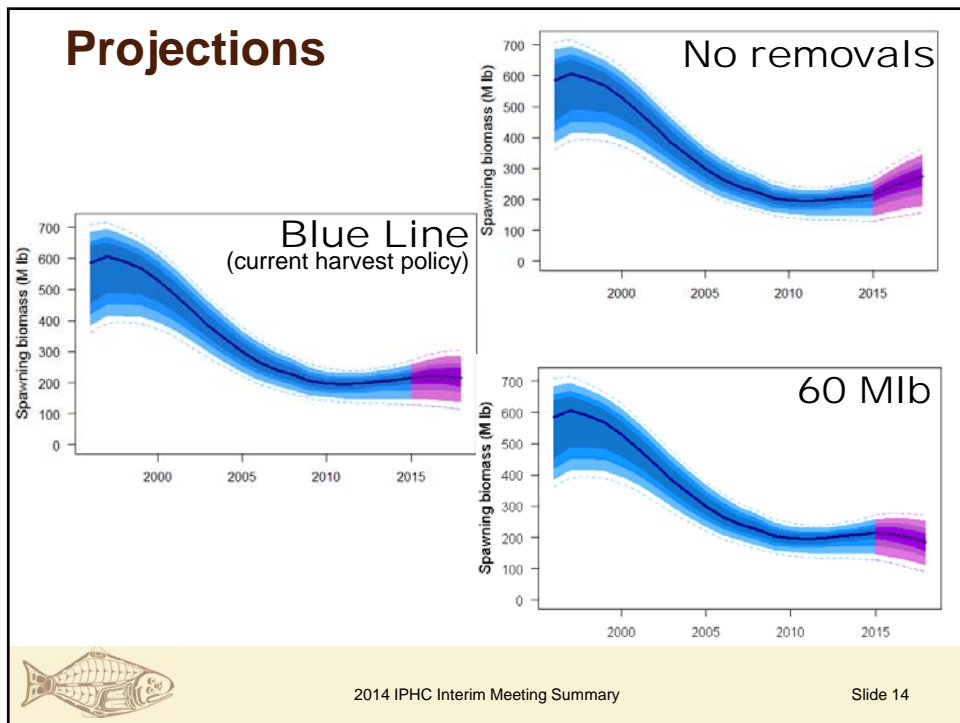
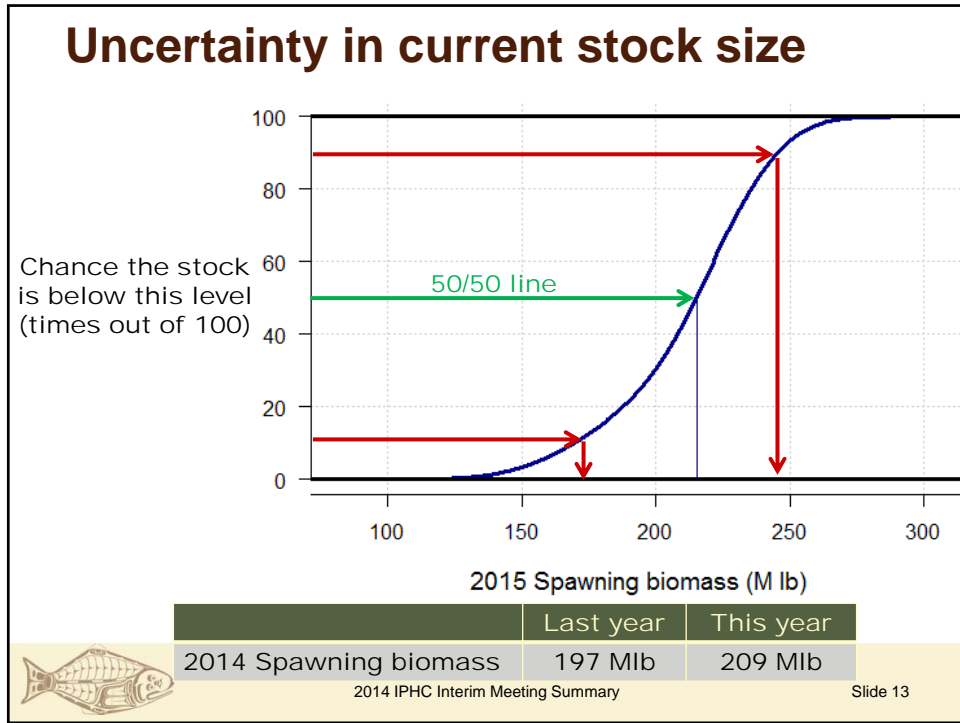
Slide 11

Long time-series comparisons



2014 IPHC Interim Meeting Summary

Slide 12



Decision table: Stock trend

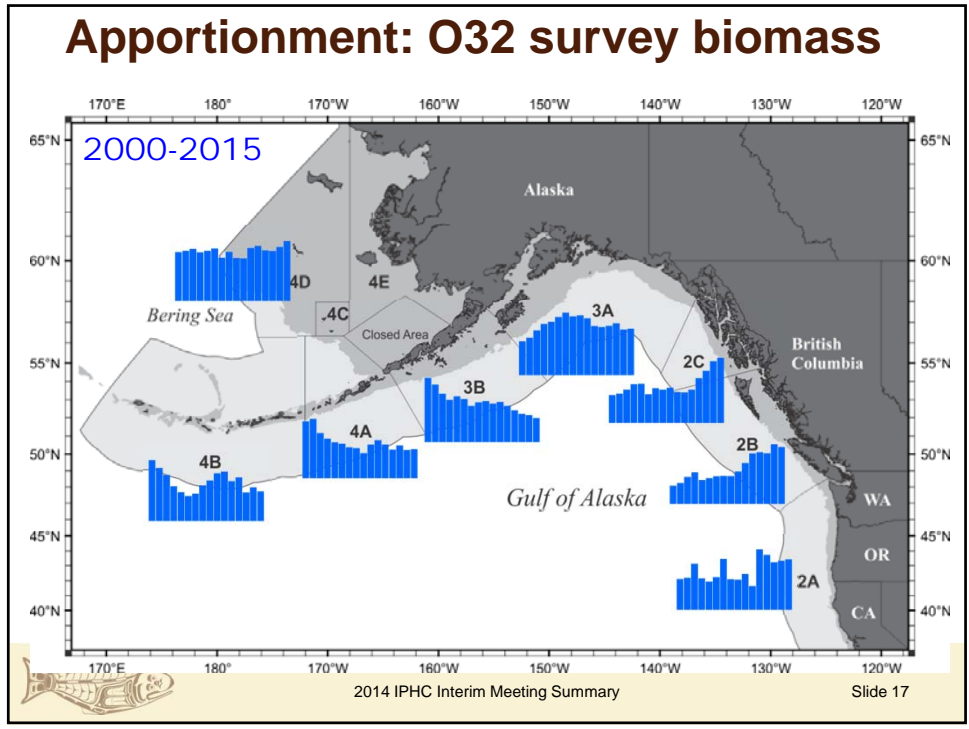
Total removals (M lb)	Stock Trend			
	Spawning biomass			
	in 2016		in 2018	
	is less than 2015	is 5% less than 2015	is less than 2015	is 5% less than 2015
0.0	<1/100	<1/100	<1/100	<1/100
13.1	<1/100	<1/100	<1/100	<1/100
20.0	<1/100	<1/100	1/100	<1/100
30.0	3/100	<1/100	17/100	4/100
38.7	19/100	<1/100	40/100	23/100
41.4	26/100	1/100	47/100	30/100
43.3	31/100	1/100	56/100	36/100
50.0	44/100	5/100	75/100	51/100
60.0	65/100	22/100	96/100	82/100
	a	b	c	d



Decision table: Harvest policy

	Total removals (M lb)	Fishery CEY (M lb)	Fishing intensity	Stock Status				Fishery Trend				Fishery Status	
				Spawning biomass				Fishery CEY from the harvest policy				Harvest rate	
				in 2016		in 2018		in 2016		in 2018		in 2015	
				is less than 30%	is less than 20%	is less than 30%	is less than 20%	is less than 2015	is 10% less than 2015	is less than 2015	is 10% less than 2015	is above target	
2015 Alternative	0.0	0.0	F _{100%}	5/100	<1/100	1/100	<1/100	<1/100	<1/100	<1/100	<1/100	<1/100	0/100
No removals	0.0	0.0	F _{100%}	5/100	<1/100	1/100	<1/100	<1/100	<1/100	<1/100	<1/100	<1/100	<1/100
FCEY = 0	13.1	0.0	F _{73%}	5/100	<1/100	2/100	<1/100	<1/100	<1/100	<1/100	<1/100	<1/100	<1/100
	20.0	7.7	F _{64%}	6/100	<1/100	3/100	<1/100	<1/100	<1/100	<1/100	<1/100	<1/100	<1/100
	30.0	16.5	F _{54%}	7/100	<1/100	5/100	<1/100	3/100	2/100	3/100	2/100	4/100	4/100
Blue Line	38.7	25.0	F _{46%}	8/100	<1/100	8/100	<1/100	37/100	22/100	36/100	23/100	50/100	50/100
status quo	41.4	27.5	F _{45%}	8/100	<1/100	9/100	1/100	57/100	37/100	51/100	38/100	50/100	50/100
Maintain 2014 SPR	43.3	29.5	F _{43%}	8/100	<1/100	10/100	1/100	73/100	51/100	63/100	49/100	88/100	88/100
	50.0	36.0	F _{39%}	9/100	1/100	13/100	1/100	99/100	91/100	95/100	84/100	>99/100	>99/100
	60.0	45.8	F _{34%}	11/100	1/100	23/100	2/100	>99/100	>99/100	>99/100	>99/100	>99/100	>99/100
				e	f	g	h	i	j	k	l	m	





FCEY comparison

	2A	2B	2C	3A	3B	4A	4B	4CDE	Total
2014 Blue Line	0.72	4.98	4.16	9.43	2.84	0.85	0.82	0.64	24.45
2014 Adopted	0.96	6.85	4.16	9.43	2.84	0.85	1.14	1.29	27.52
2015 Blue Line	0.75	4.96	4.30	10.12	2.46	1.35	0.72	0.37	25.02

Increases relative to 2014 Blue Line

2014 IPHC Interim Meeting Summary Slide 18

2015 Annual Meeting

- 26-30 January, 2015
- Vancouver Marriot Downtown Hotel, Vancouver, B.C.
- All public and administrative sessions will be open and webcast
- Further details on IPHC web site www.iphc.int

