

Ecosystem Socioeconomic Profile (ESP)

GOA Pollock (Report Card)

Editors: Kalei Shotwell, Martin Dorn, Cole Monnahan, Alison Deary, Bridget Ferriss, Ben Fissel, Lauren Rogers, Abigail Tyrell, Stephani Zador

Contributors: Kerim Aydin, Steve Barbeaux, Cheryl Barnes, Curry Cunningham, Dan Goethel, Peter-John Hulson, David Kimmel, Ben Laurel, Zack Oyafuso, Patrick Ressler, Katie Sweeney, Jordan Watson, Matt Wilson, Sarah Wise

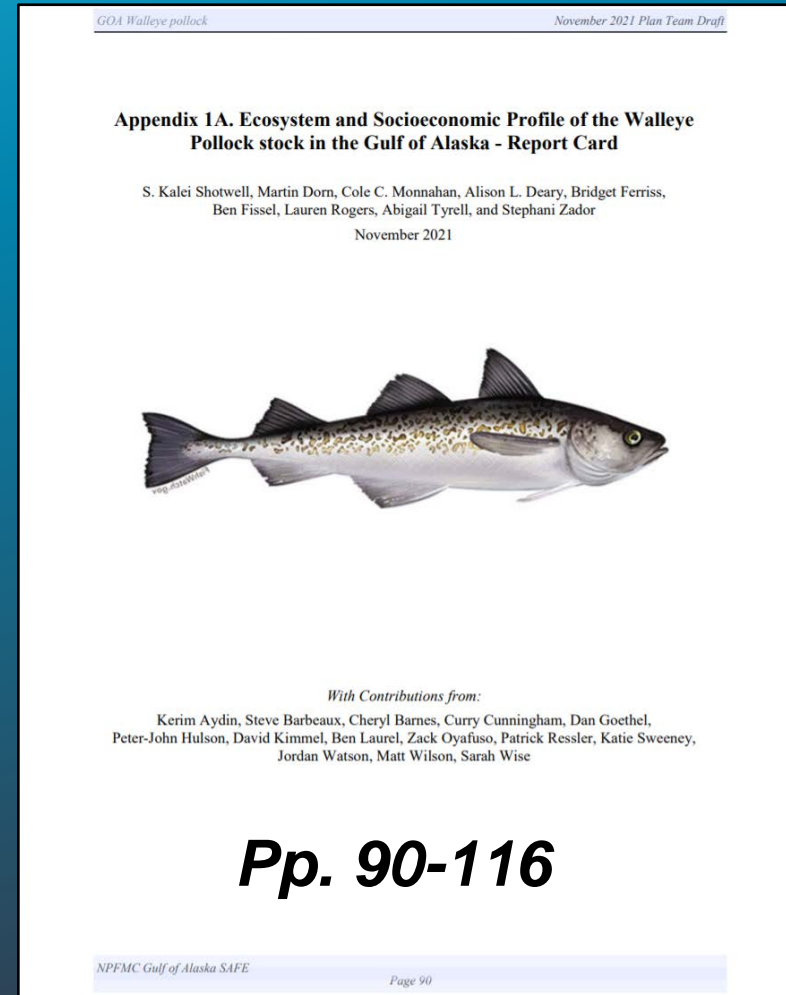


NOAA
FISHERIES

Overview

Appendix in SAFE report

- Full ESP in 2019
- Partial ESP in Nov 2020
- Report card in Nov 2021
 - Simplified template allows for including current year data
 - Some indicators missing due to cancellations, data timing
- 9 editors, 14 contributors



ESP Report Card Template

Stock/Complex:

Outline for Ecosystem and Socioeconomic Profile (ESP)

Current Year Update (Report Card)

- Short description of an ESP process and reference to full ESP

Management Considerations

- Summary ecosystem and socioeconomic considerations from the assessment for use in the main stock assessment

Modeling Considerations

- Summary of intermediate stage importance results and research ecosystem linked model status

Assessment

Ecosystem and Socioeconomic Processes

- Short description of ecosystem and socioeconomic processes from full or partial ESP with conceptual models
- Table of data sources, key processes affecting survival, conceptual model graphics

Indicator Suite

- List of ecosystem and socioeconomic indicator titles with standard time series graph

Indicator Monitoring Analysis

- Beginning stage traffic light test with comparison table and historical scoring by ecosystem and socioeconomic indicators

- Intermediate stage importance test with covariate graph, direction, magnitude, and importance results (optional)
- Advanced stage research model update with reference to developed model and supportive graphs (optional)

Data Gaps and Future Research Priorities

- Description of metric or indicator data gaps and needs
- Priorities for ecosystem and socioeconomic research that would support future versions of the ESP |

Acknowledgements & Literature Cited

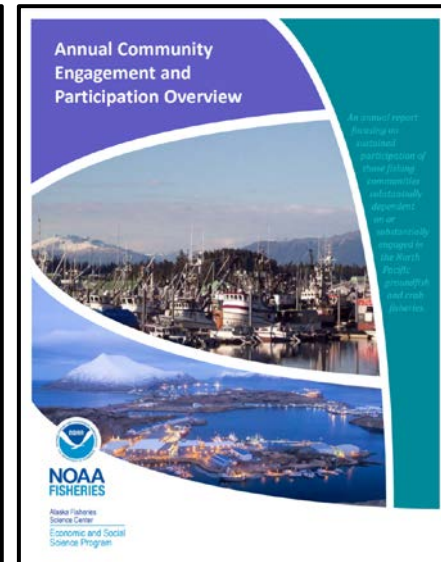
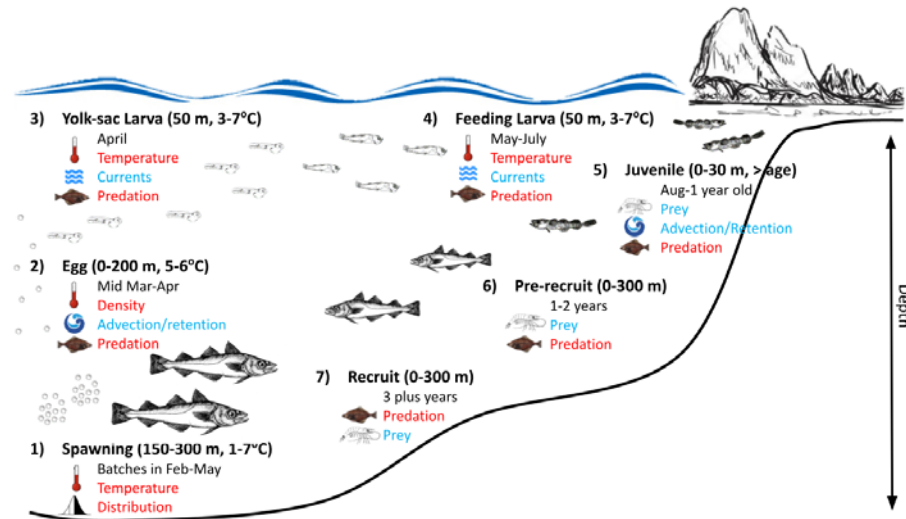
Processes

- Ecosystem

- Short summary of life history, similar to ESR risk categories
- Includes conceptual model for reference

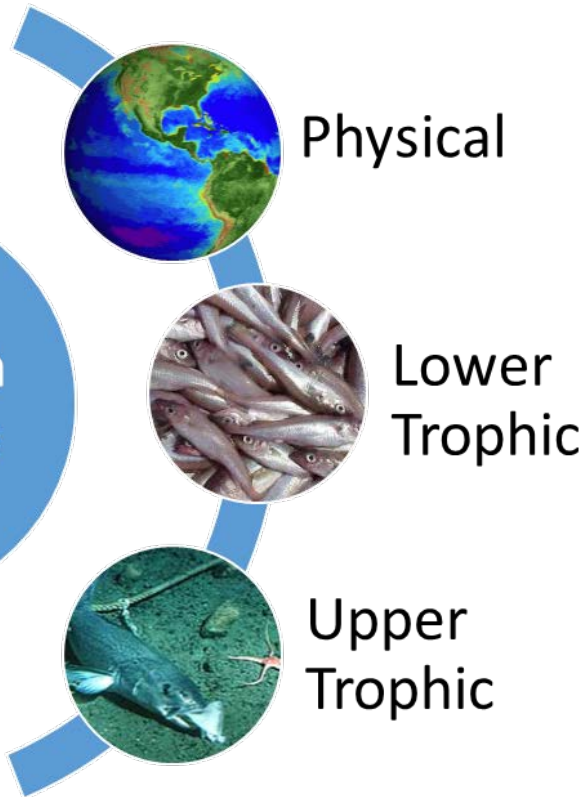
- Socioeconomic

- Pared down EPR, focus on stock health, fishery behavior
- Reference but not redundant with Econ SAFE or ACEPO



Ecosystem Indicators

Ecosystem Indicators



- 1. Annual Marine heatwave index (model)
- 2. **Bottom temperature (trawl survey)**
- 3. **Sea surface temperature (satellite)**
- 4. **Spring wind direction (buoy data)**
- + 5. Chlorophyll *a* biomass, (satellite)
- + 6. **Spring bloom peak timing (satellite)**
- + 7. Spring, summer copepods (EcoFOCI)
- + 8. Euphausiids (acoustic backscatter)
- + 9. Auklet reproductive success Chowiet
- + 10. **Pollock larvae, YOY, condition (EcoFOCI)**
- + 11. **Nearshore pollock CPUE (Kodiak)**
- + 12. Pollock relative biomass Aiktak puffin
- 13. Pollock predation estimate age-1 (model)
- + 14. **Pollock euphausiid in diet (survey)**
- + 15. **Fall fishery, winter survey condition**
- + 16. **COG northeast, area occupied (VAST)**
- 17. ATF, **POP, Sablefish** total biomass (model)
- 18. Adult Steller sea lions counts (survey)

Socioeconomic Indicators



Socio-economic Indicators



Fishery Performance

- 1. Winter, spring CPUE fishery
- 2. Summer, fall CPUE fishery



Economic

- 3. Ex-vessel price per pound
- 4. Roe per unit catch



Community

- 5. Processing RQ Kodiak
- 6. Harvesting RQ Kodiak
- 7. Processing RQ small comm.
- 8. Harvesting RQ Sand Point

Indicator Monitoring Analysis

Beginning Stage



Traffic Light

- Historical simple score (SSC)
- Current year trends relative to mean of series
- Evaluate whole suite utility

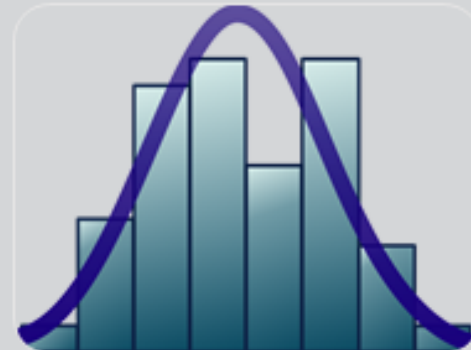
Intermediate Stage



Importance

- Regression R^2
- Direction, magnitude, uncertainty, inclusion weight
- Prediction performance

Advanced Stage

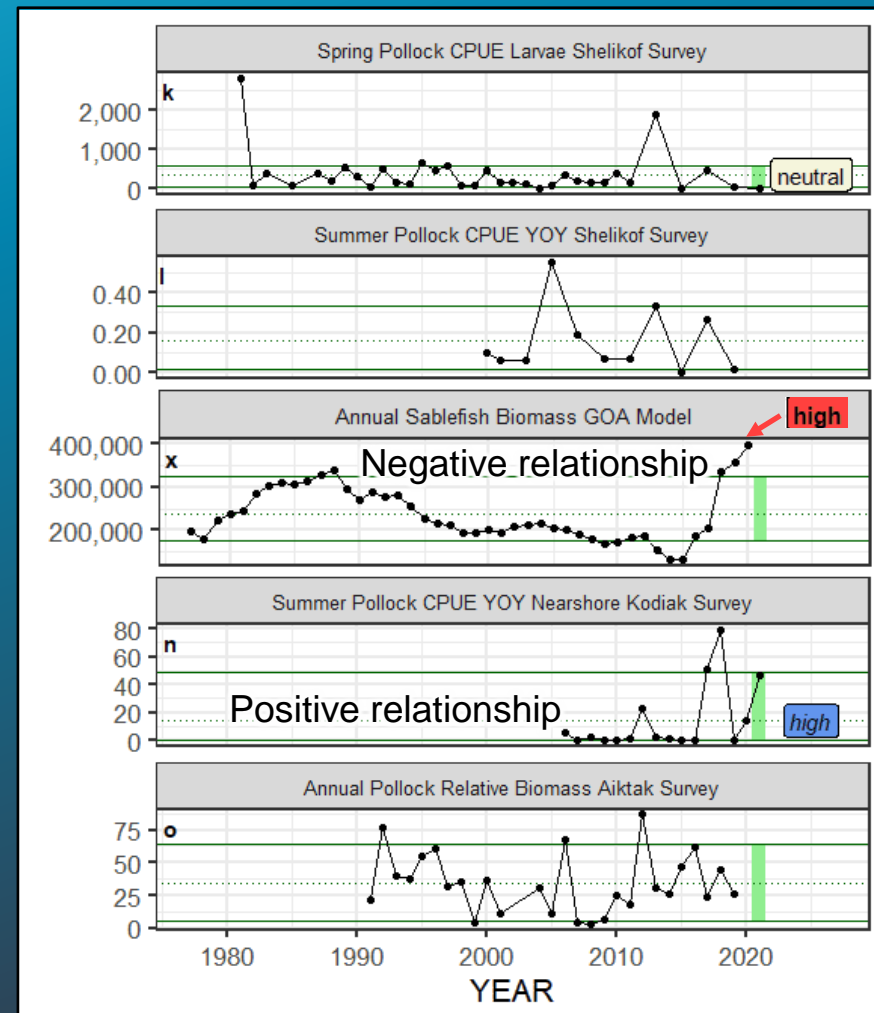


Ecosystem Model Run

- Comparison w/ operational
- Retrospective
- Prediction performance
- Terminal SSB

Traffic Light

- Time series and Table
 - Historical time series of indicators suite (~ starts 1977)
 - Evaluate a given year 1 stdev from the long term mean
 - High (H), low (L), neutral (N), color is relationship with stock
- Summary Score
 - Score by category last 20 yrs
 - Sum of H, L, N, color is -1,1



Note: new
this year for
report card

Traffic Light Table

| Category | Indicator | 2017 Status | 2018 Status | 2019 Status | 2020 Status | 2021 Status |
|---------------|--|-------------|-------------|-------------|-------------|-------------|
| Physical | Annual Heatwave GOA Model | neutral | neutral | high | neutral | neutral |
| | Spring Temperature Surface WCGOA Satellite | neutral | neutral | high | neutral | neutral |
| | Summer Temperature Bottom GOA Survey | neutral | NA | high | NA | neutral |
| | Spring Wind Direction Kodiak Buoy | neutral | NA | neutral | neutral | neutral |
| | Spring Chlorophylla Biomass WCGOA Satellite | low | low | low | neutral | neutral |
| Lower Trophic | Spring Chlorophylla Peak WCGOA Satellite | low | low | high | low | neutral |
| | Spring Small Copepod Abundance Shelikof Survey | neutral | NA | high | NA | neutral |
| | Summer Large Copepod Abundance Shelikof Survey | low | NA | neutral | NA | NA |
| | Summer Euphausiid Abundance Kodiak Survey | low | NA | neutral | NA | NA |
| | Annual Auklet Reproductive Success Chowiet Survey | neutral | low | neutral | NA | neutral |
| | Spring Pollock CPUE Larvae Shelikof Survey | neutral | NA | neutral | NA | neutral |
| | Summer Pollock CPUE YOY Shelikof Survey | neutral | NA | neutral | NA | NA |
| | Summer Pollock Condition YOY Shelikof Survey | neutral | NA | low | NA | NA |
| | Summer Pollock CPUE YOY Nearshore Kodiak Survey | high | high | neutral | neutral | high |
| | Annual Pollock Relative Biomass Aiktak Survey | neutral | neutral | neutral | NA | NA |
| | Summer Pollock MT Consumed Age1 GOA Model | neutral | NA | neutral | NA | NA |
| | Summer Pollock Euphausiid Diet Juvenile GOA Survey | neutral | NA | high | NA | neutral |
| Upper Trophic | Fall Pollock Condition Adult GOA Fishery | neutral | neutral | neutral | neutral | NA |
| | Winter Pollock Condition Adult GOA Survey | low | low | neutral | neutral | neutral |
| | Summer Pollock Center Gravity Northeast WCGOA | low | NA | neutral | NA | neutral |
| | Summer Pollock Area Occupied WCGOA Model | low | NA | neutral | NA | neutral |
| | Annual Arrowtooth Biomass GOA Model | neutral | neutral | neutral | neutral | NA |
| | Annual Pacific Ocean Perch Biomass GOA Model | high | high | high | high | NA |
| | Annual Sablefish Biomass GOA Model | neutral | high | high | high | NA |
| | Annual Steller Sea Lion Adult GOA Survey | neutral | neutral | neutral | NA | NA |

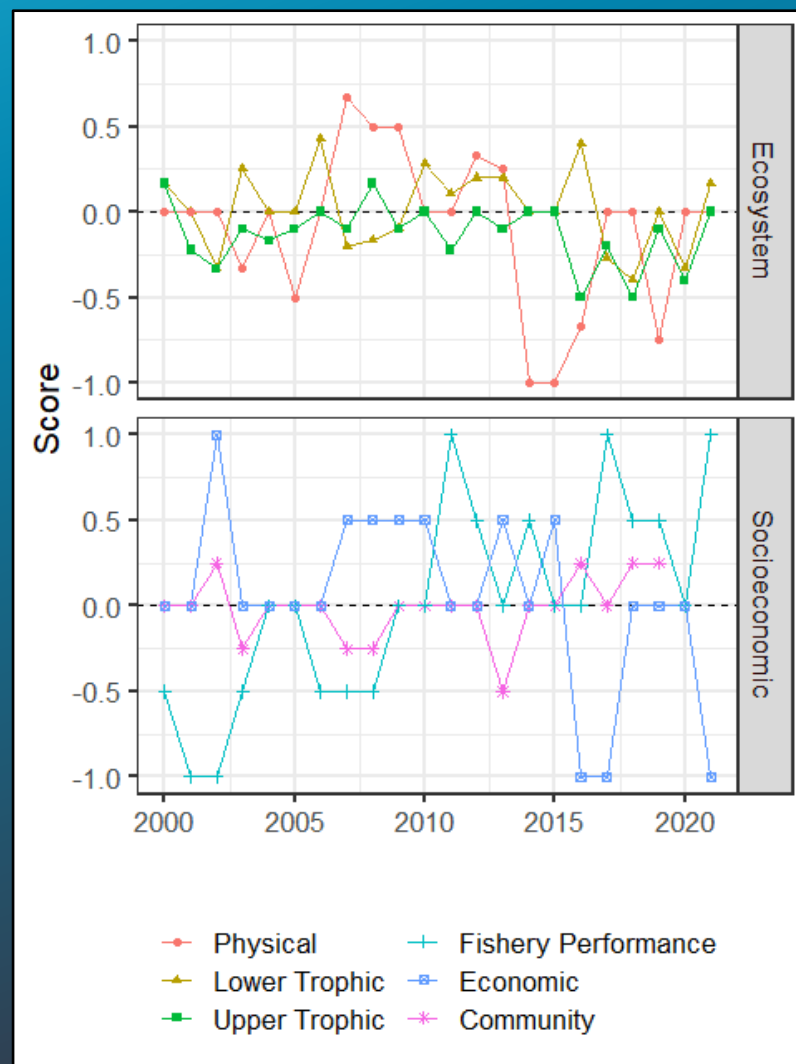
Note: new
this year for
report card

Traffic Light Table

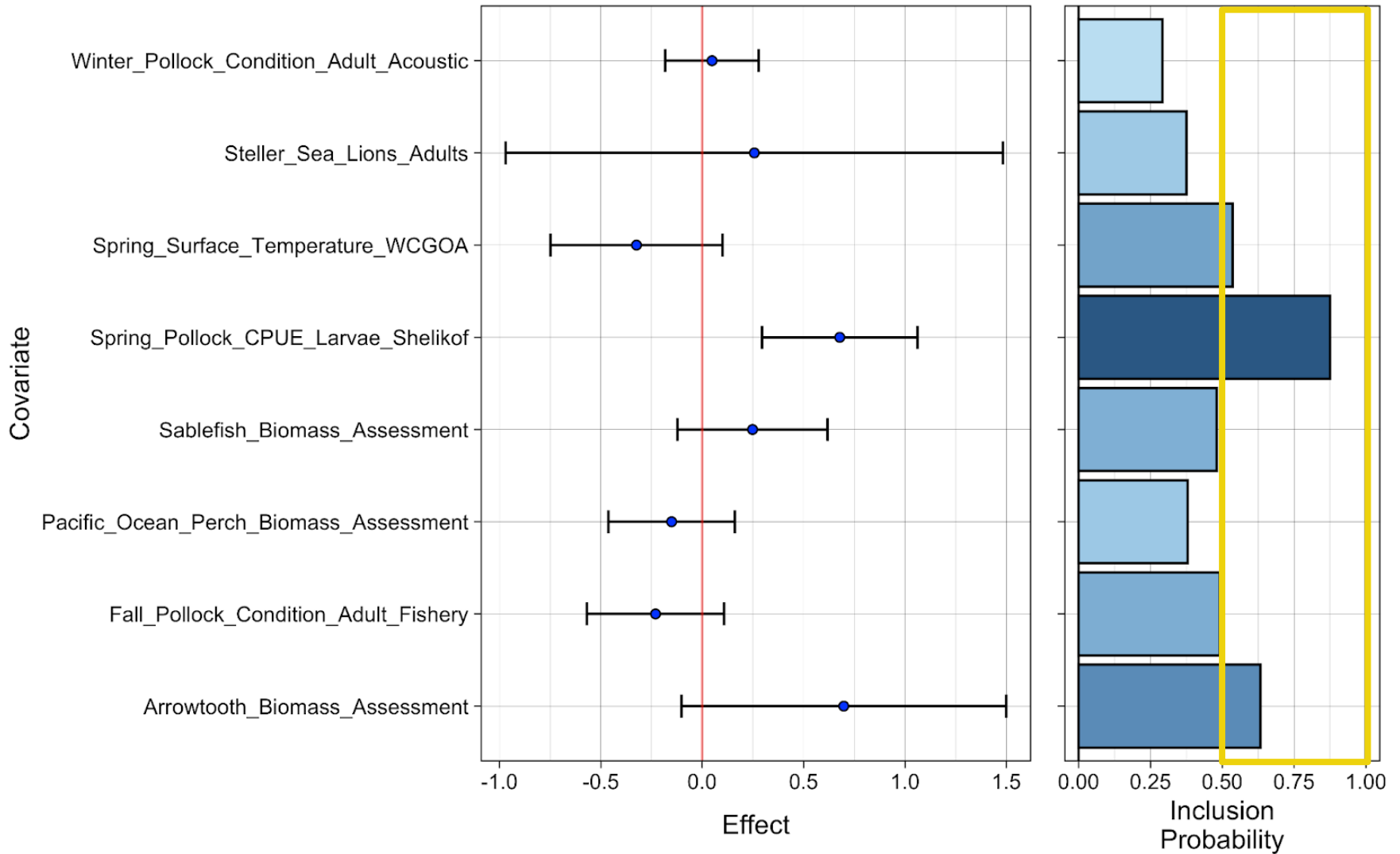
| Category | Indicator | 2017 Status | 2018 Status | 2019 Status | 2020 Status | 2021 Status |
|---------------------|--|-------------|-------------|-------------|-------------|-------------|
| Fishery Performance | Winter Spring Pollock CPUE Adult GOA Fishery | <i>high</i> | <i>high</i> | <i>high</i> | neutral | <i>high</i> |
| | Summer Fall Pollock CPUE Adult GOA Fishery | <i>high</i> | neutral | neutral | neutral | NA |
| Economic | Annual Pollock Real Exvessel Price Fishery | low | neutral | neutral | neutral | NA |
| | Winter Spring Pollock Roe Per Unit Catch Fishery | low | neutral | neutral | neutral | low |
| Community | Annual Pollock RQ Harvesting Revenue Kodiak Fishery | <i>high</i> | <i>high</i> | <i>high</i> | NA | NA |
| | Annual Pollock RQ Processing Revenue Kodiak Fishery | neutral | <i>high</i> | <i>high</i> | NA | NA |
| | Annual Pollock RQ Harvesting Revenue Small Communities GOA Fishery | low | low | low | NA | NA |
| | Annual Pollock RQ Processing Revenue Small Communities GOA Fishery | neutral | neutral | neutral | NA | NA |

Traffic Light Score

- Ecosystem (16 of 25 total)
 - Physical remains average
 - Lower trophic > to above average
 - Upper trophic > to average
- Socioeconomic (4 of 8 total)
 - Fishery perf > to above average
 - Economic low in 2021 due to roe catch very low, 2020 average
- 20 of 33 indicators updated

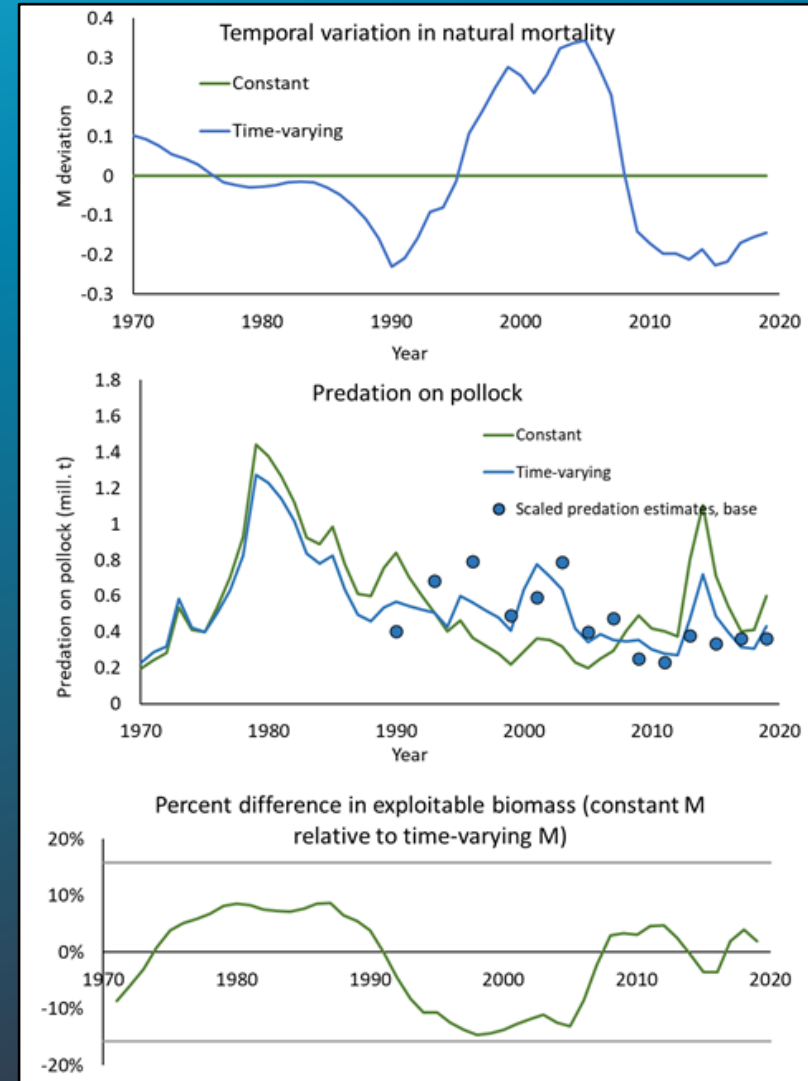


Importance



Ecosystem Linked Model

- Exploratory model
 - Uses RACE diet data and stock assessment data of predators
 - Total predation index (not just a_1)
 - Within stock assessment model
- Preliminary results
 - M ranged from 40% above to 20% below the mean (mostly ATF)
 - Improved survey fit, exploitable biomass differed by 15%



Considerations

- Management Summary

- Cooling overall, transport to suitable habitat, later peak
- Larvae low, nearshore YOY high, sufficient prey
- Condition average, slight shift in distribution and spread
- More competitors in system with sablefish and POP
- Fishery CPUE high, low price and roe catch

- Modeling Summary

- 3 potential covariates for GOA pollock recruitment
- New research ecosystem linked model of predation

Next Steps

- 2022 Request for Indicators (RFI)
 - Use ESP data gaps and research priorities
 - ESP team creates RFI in Jan
 - Indicators submitted and reviewed in Feb
 - If new indicators, then initiate partial ESP
- 2022 ESP
 - If partial, in Sept and evaluate current community indicator categories (SSC)
 - Report card of current data in Nov



Questions?

Contact:

Kalei Shotwell, NOAA-AFSC
Kalei.Shotwell@noaa.gov