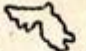


**absi**

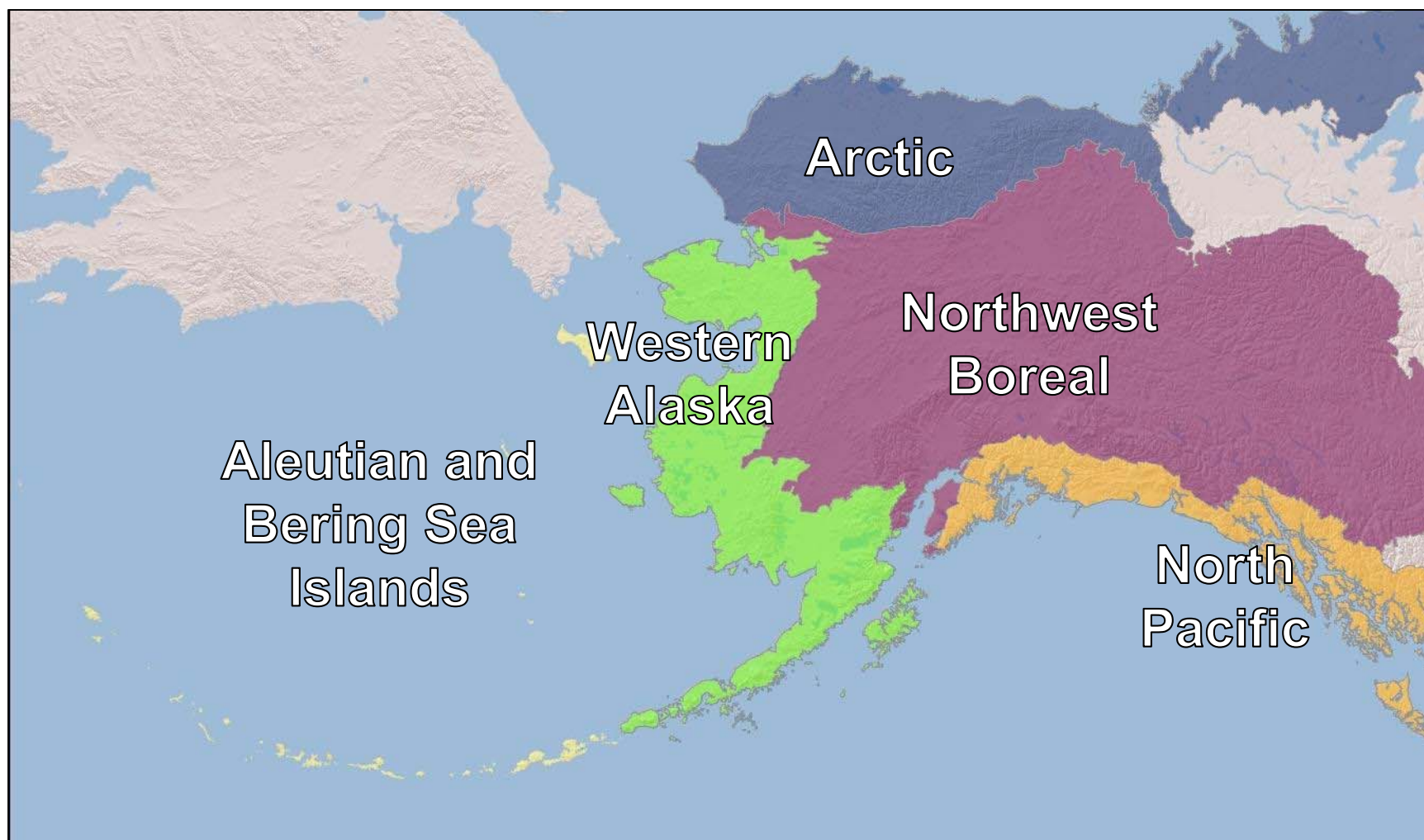
**Aleutian and Bering Sea Islands  
Landscape Conservation Cooperative**

*Alaska*  *Shaimca*

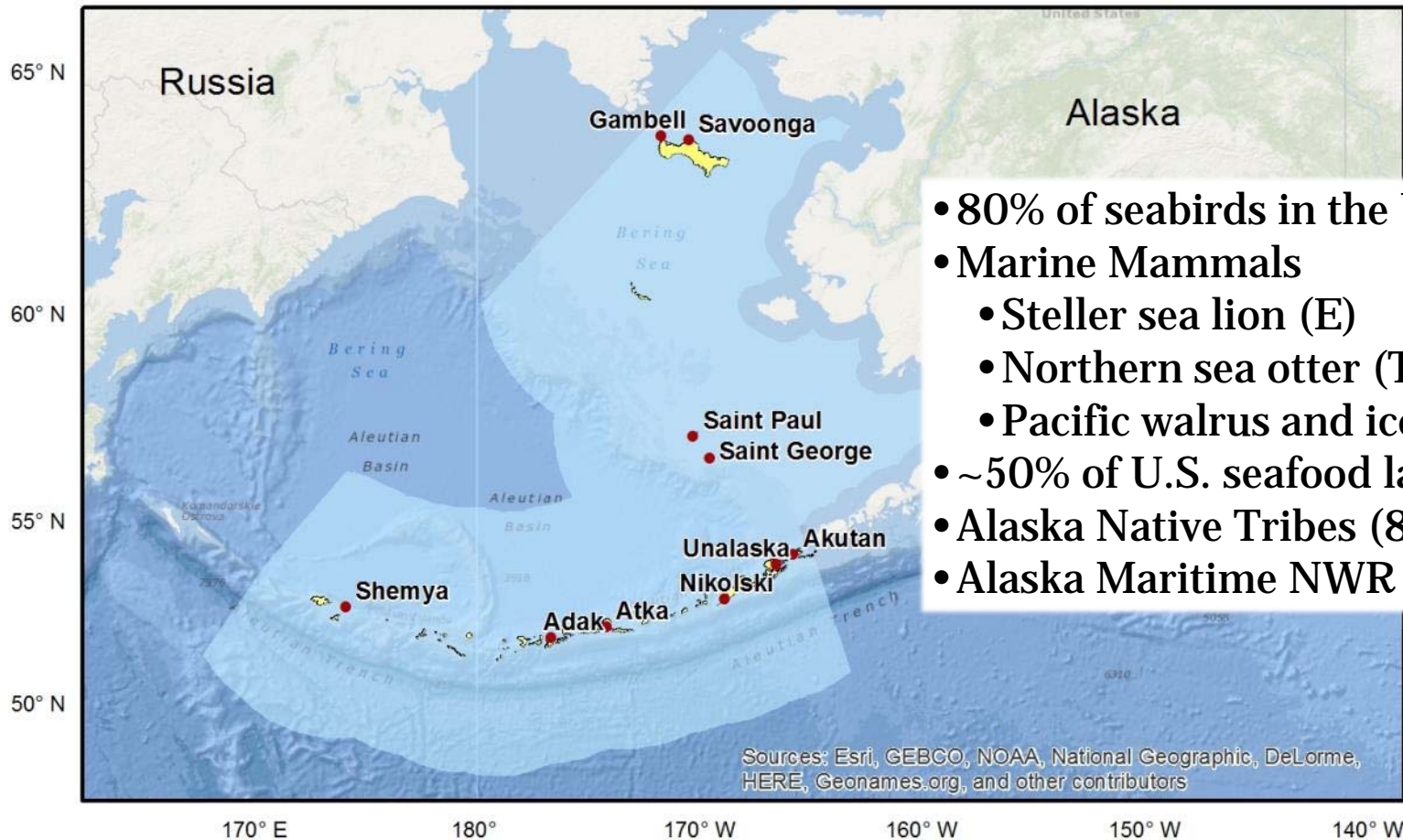
*Seeten*  
*Kanuten*  
*Aghka*  
*Sivooopham*  
*Halibut*  
*23 June*



# LCCs in Alaska



# Geography, Resources, Residents



- 80% of seabirds in the U.S.
- Marine Mammals
  - Steller sea lion (E)
  - Northern sea otter (T)
  - Pacific walrus and ice seals
- ~50% of U.S. seafood landings
- Alaska Native Tribes (8)
- Alaska Maritime NWR

# Land Ownership in ABSI

Owner	Area (km <sup>2</sup> )	Percent
Bureau of Land Management	0.78	0.00%
Fish and Wildlife Service	8,638.37	50.28%
Military	429.38	2.50%
Native Patent or IC	7,796.41	45.38%
Native Selected	223.31	1.30%
NOAA	7.7	0.04%
State of Alaska*	83.75	0.49%
	17,179.68	100.00%

\* State of Alaska waters extend from the mean high tide line seaward for 3 miles

Source: BLM Alaska Spatial Data Management System (<http://sdms.ak.blm.gov/sdms/>) General Land Status GIS layer

# ABSI LCC Mission Statement

*“The ABSI LCC promotes coordination, dissemination, and development of **applied science** to inform conservation of natural and cultural resources in the face of **climate change and other landscape-scale stressors.**”*

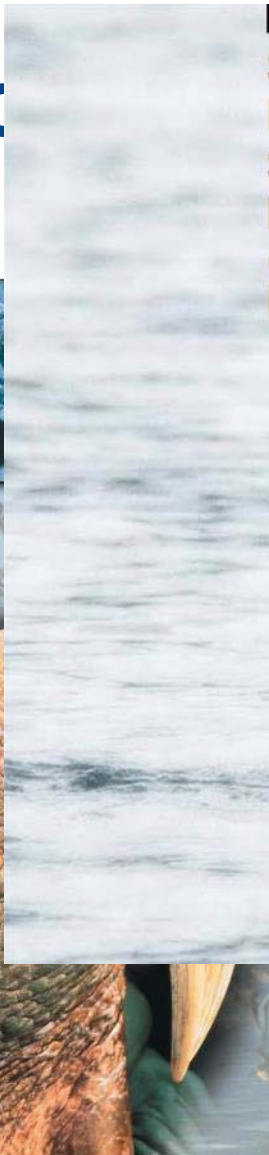
## Steering Committee Membership



absi

# Strategic

- Synthesis
- Identification
  - Climate
  - Conservation
  - Management
  - Investment
  - Conservation
  - Ocean




U.S. Fish & Wildlife Service  
**Southwest Alaska  
Distinct Population  
Segment of the  
Northern Sea Otter**  
*(Enhydra lutris kenyoni)*

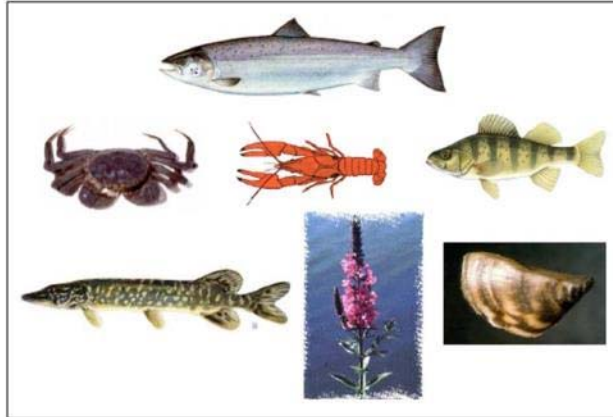


State of Alaska Tony Knowles, Governor

**Alaska Aquatic Nuisance Species  
Management Plan**



Juneau, Alaska • October 2002



Alaska Department of Fish and Game Frank Rue, Commissioner

# Priority Resources and Services

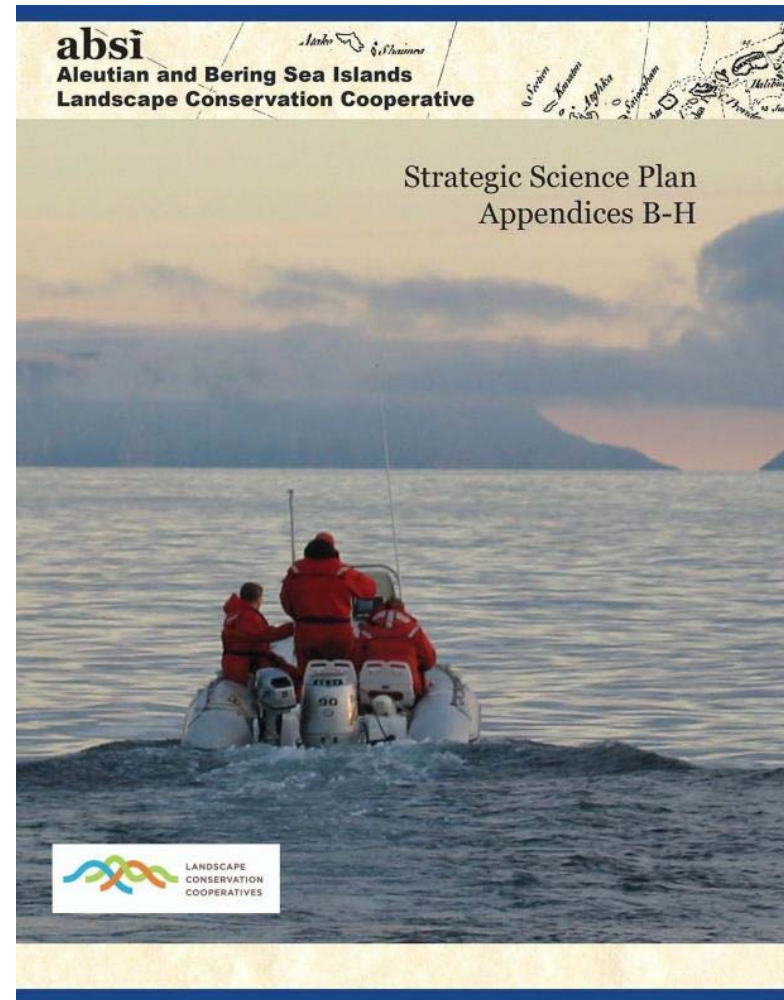
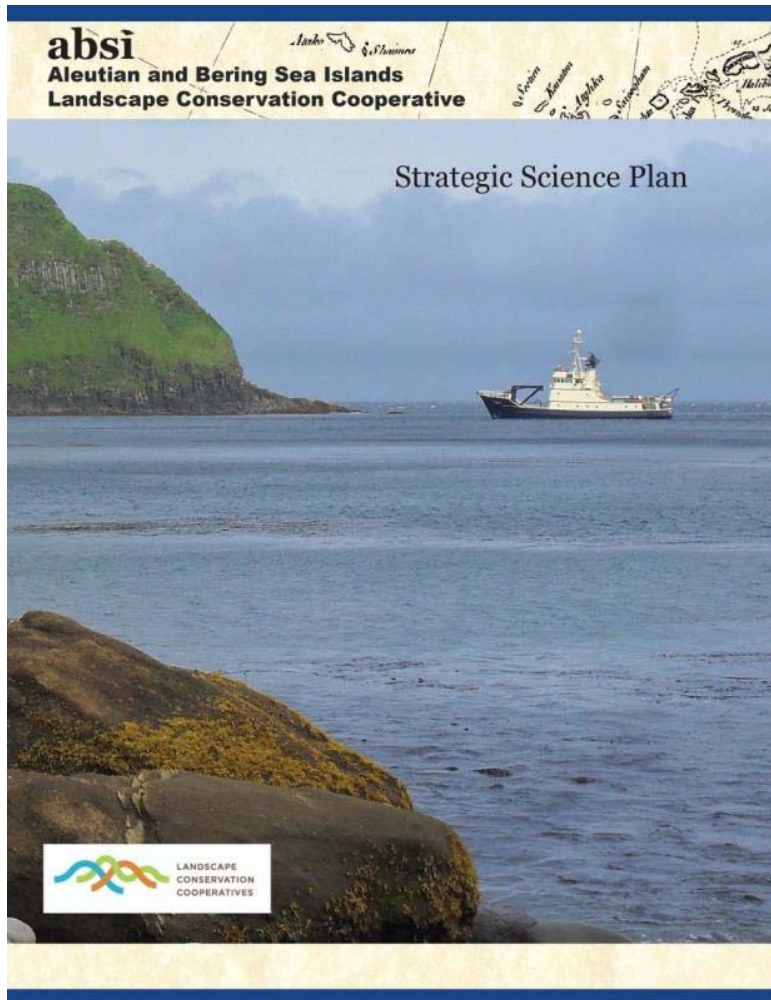
## **7 Resource Categories**

- Seabirds
- Marine Mammals
- Fishes
- Invertebrates/Shellfish
- Coldwater Corals
- Cultural Artifacts/Sites
- Terrestrial Vegetation

## **4 Ecosystem Services**

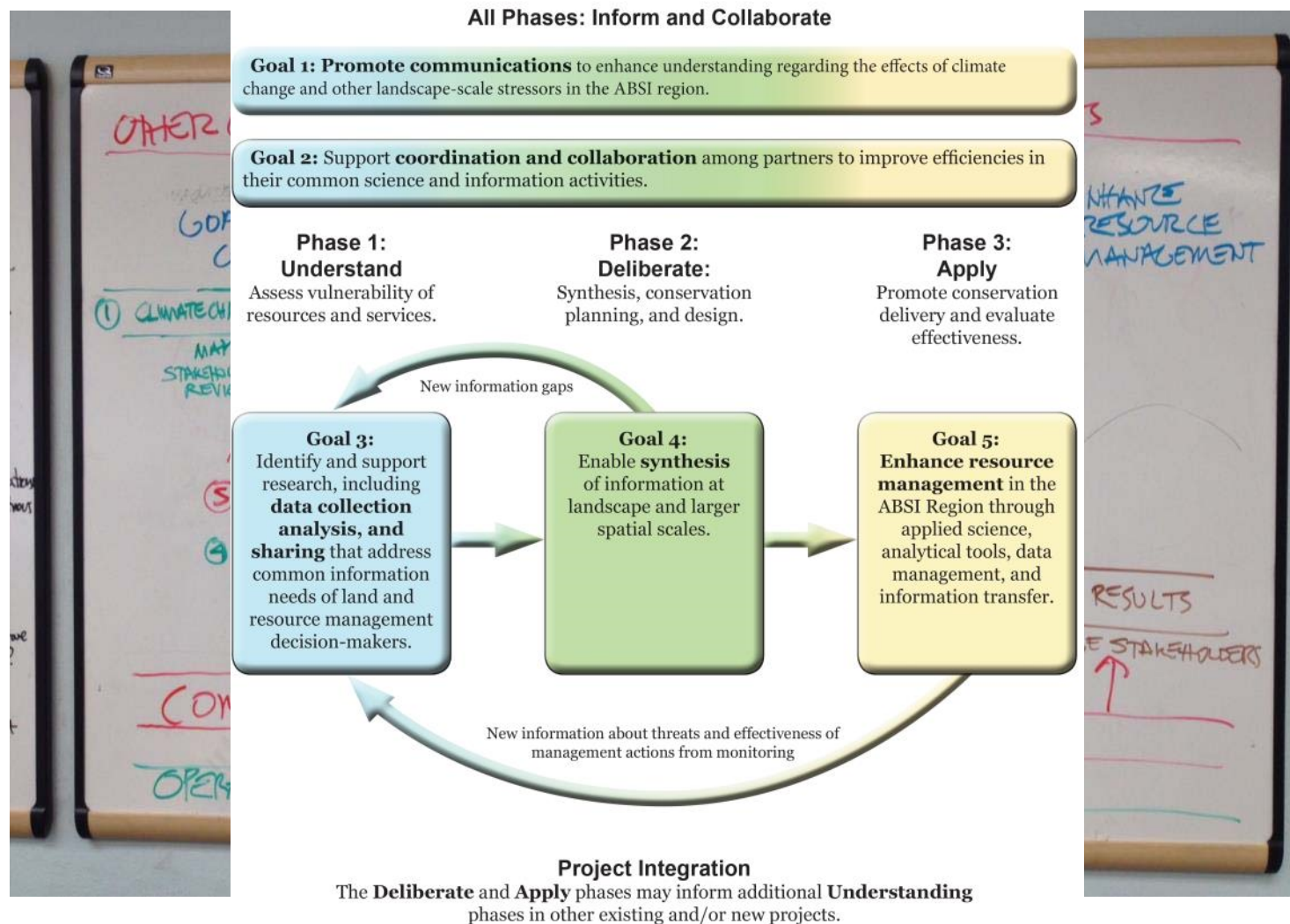
- Commercial Fishing
- Subsistence Culture
- Trophic Function
- Human Community Sustainability

# Strategic Science Plan

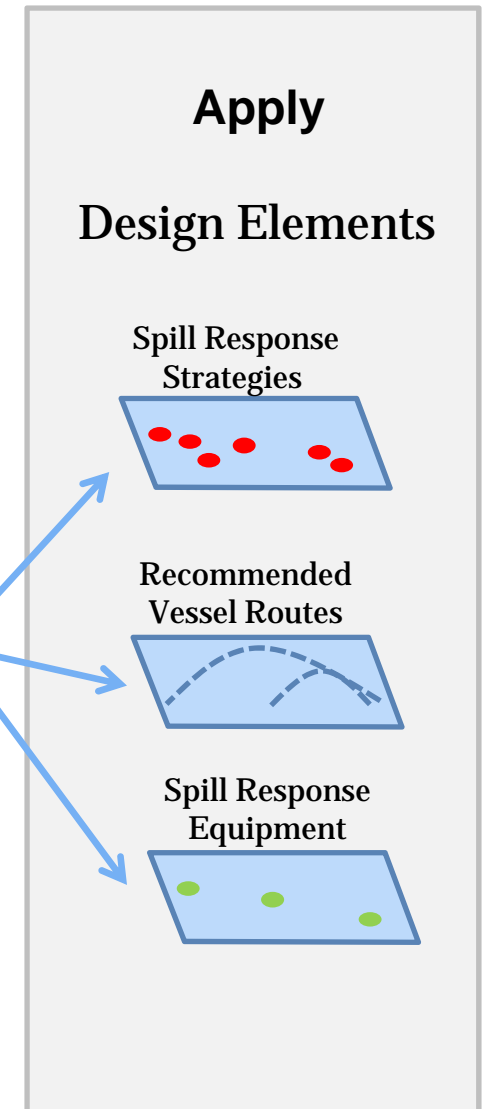
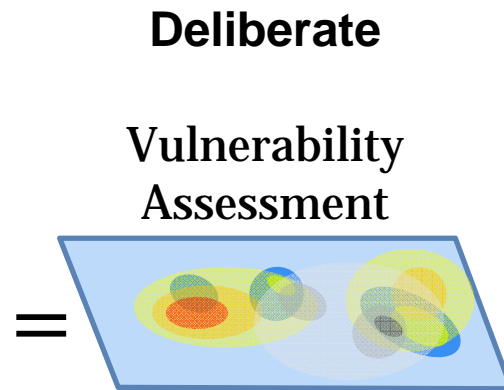
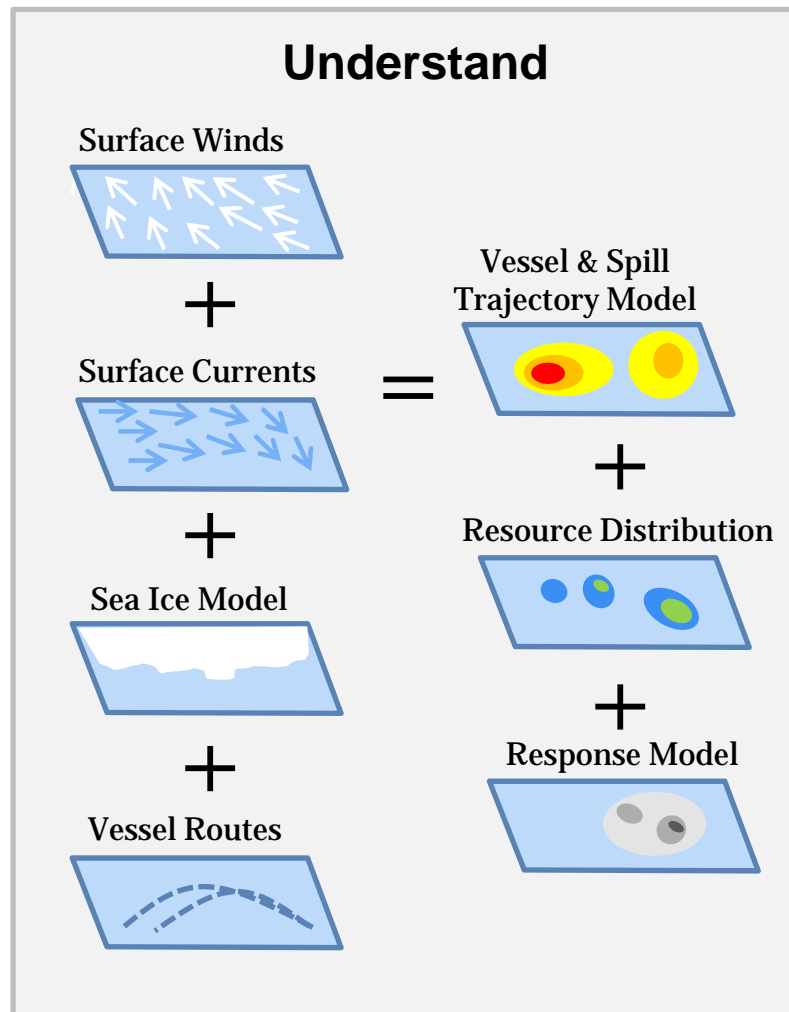




# ABSI Operational Schematic



# Vulnerability Assessments

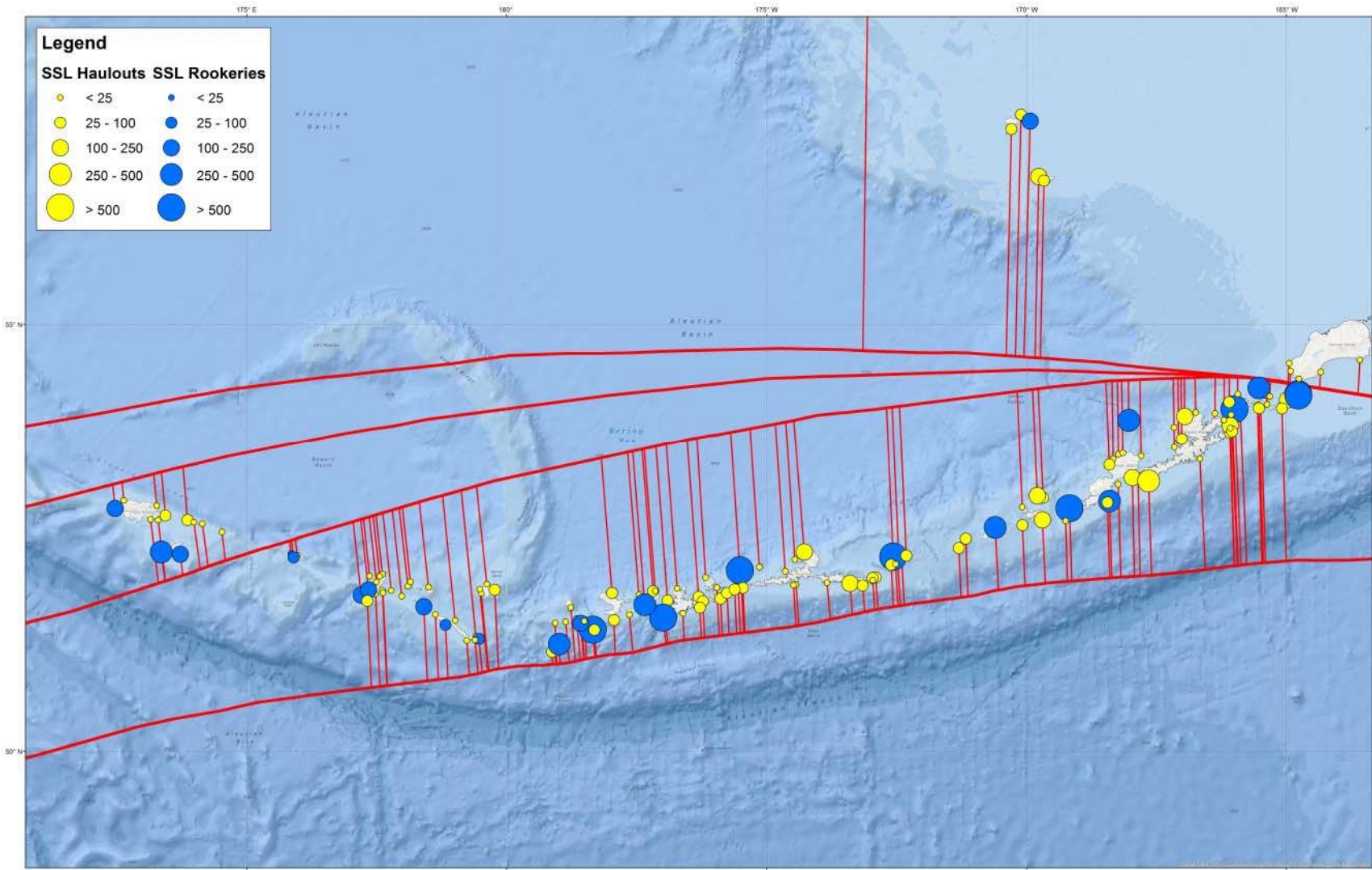


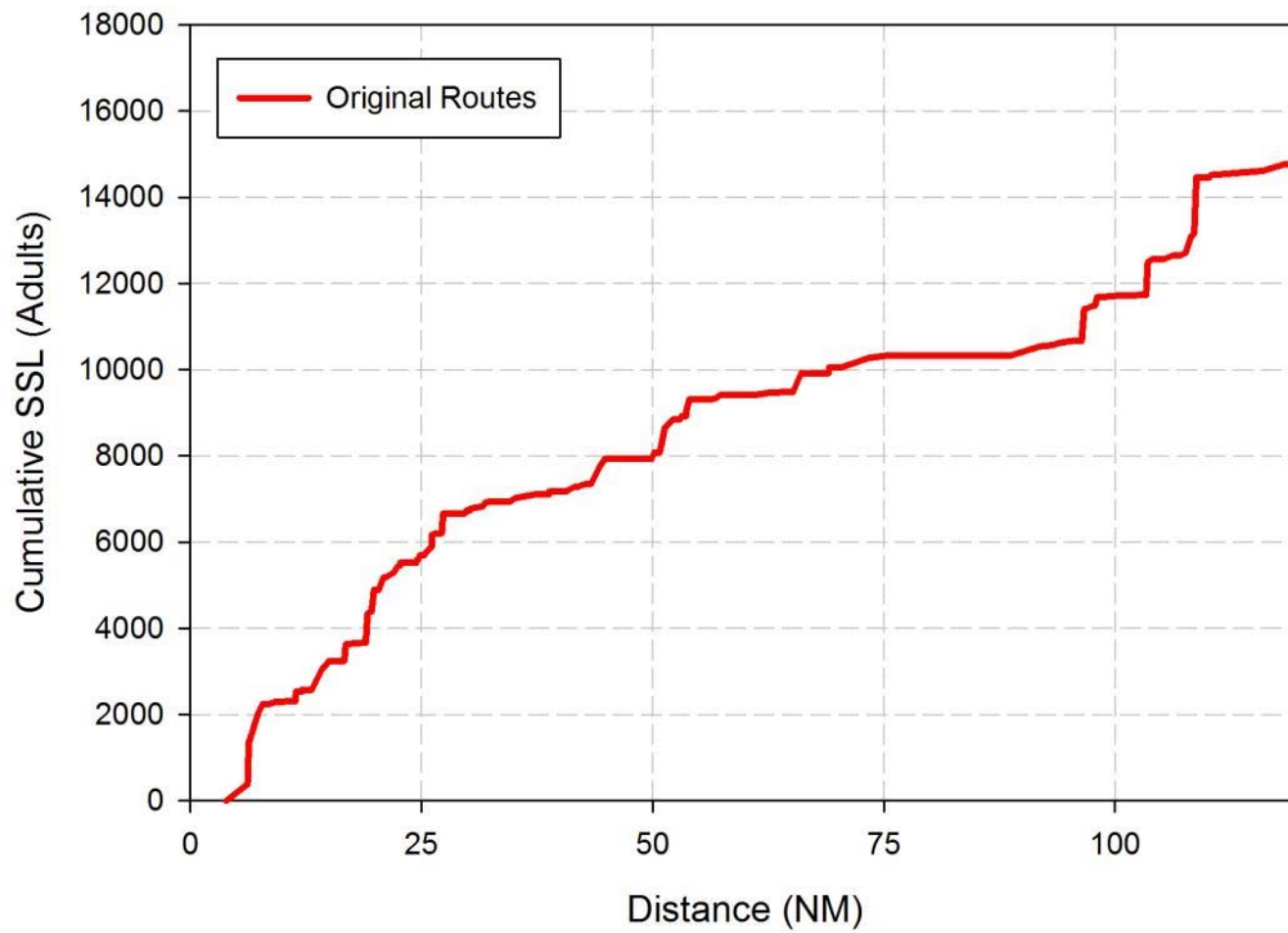
# 2013 Vulnerability Assessments (VA)

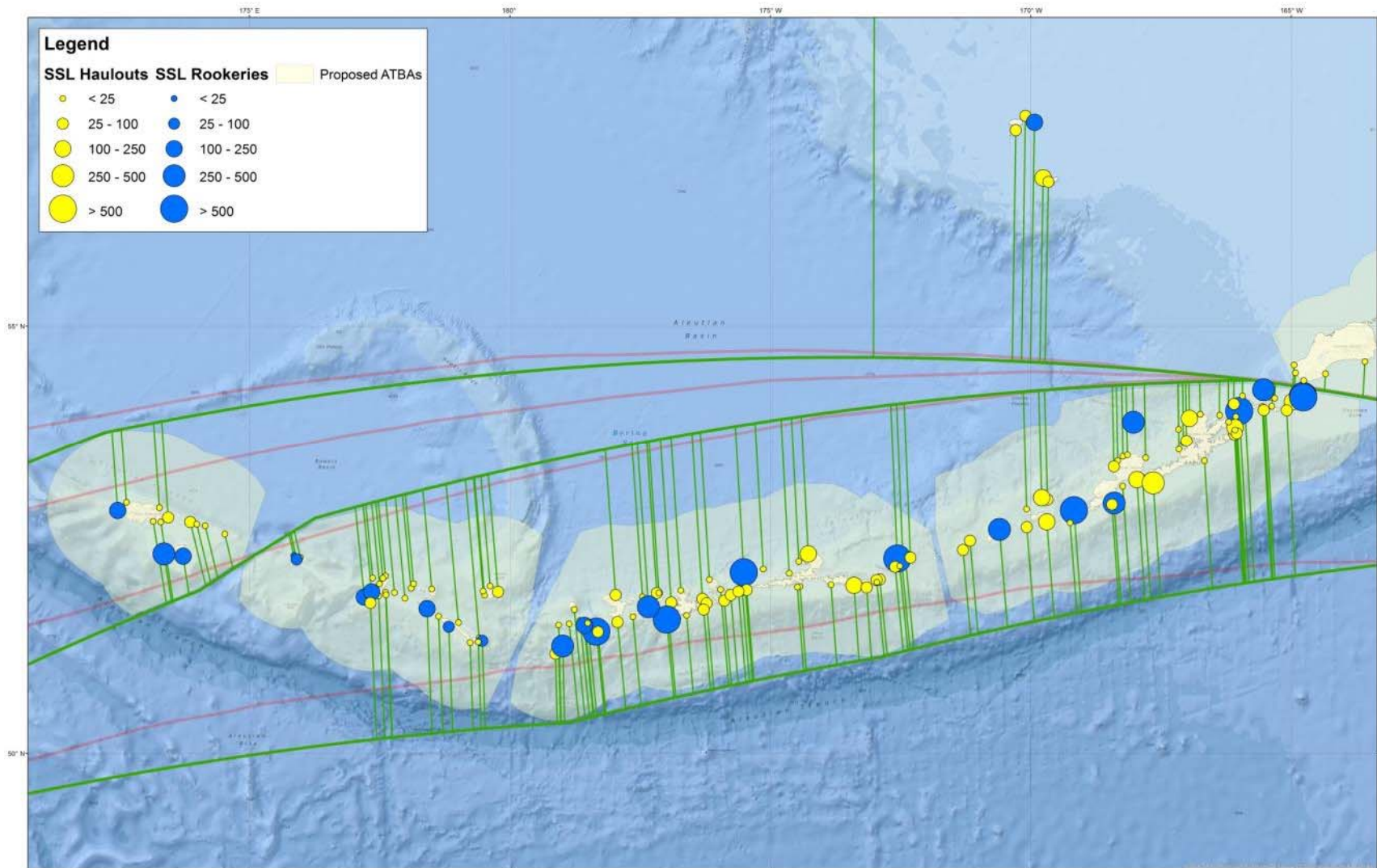
- Aleutian and Bering Climate
  - Identified resources at greatest risk to climate change
  - “Top 40” climate-related research priorities
  - Informed our FY2015 Request for Proposals
- Marine Vessel Traffic
  - Informed IMO Proposal for Areas To Be Avoided (ATBAs)
  - Identification of resources at risk from vessel groundings and resulting oil spills
  - Help prioritize information needs for seabird colonies

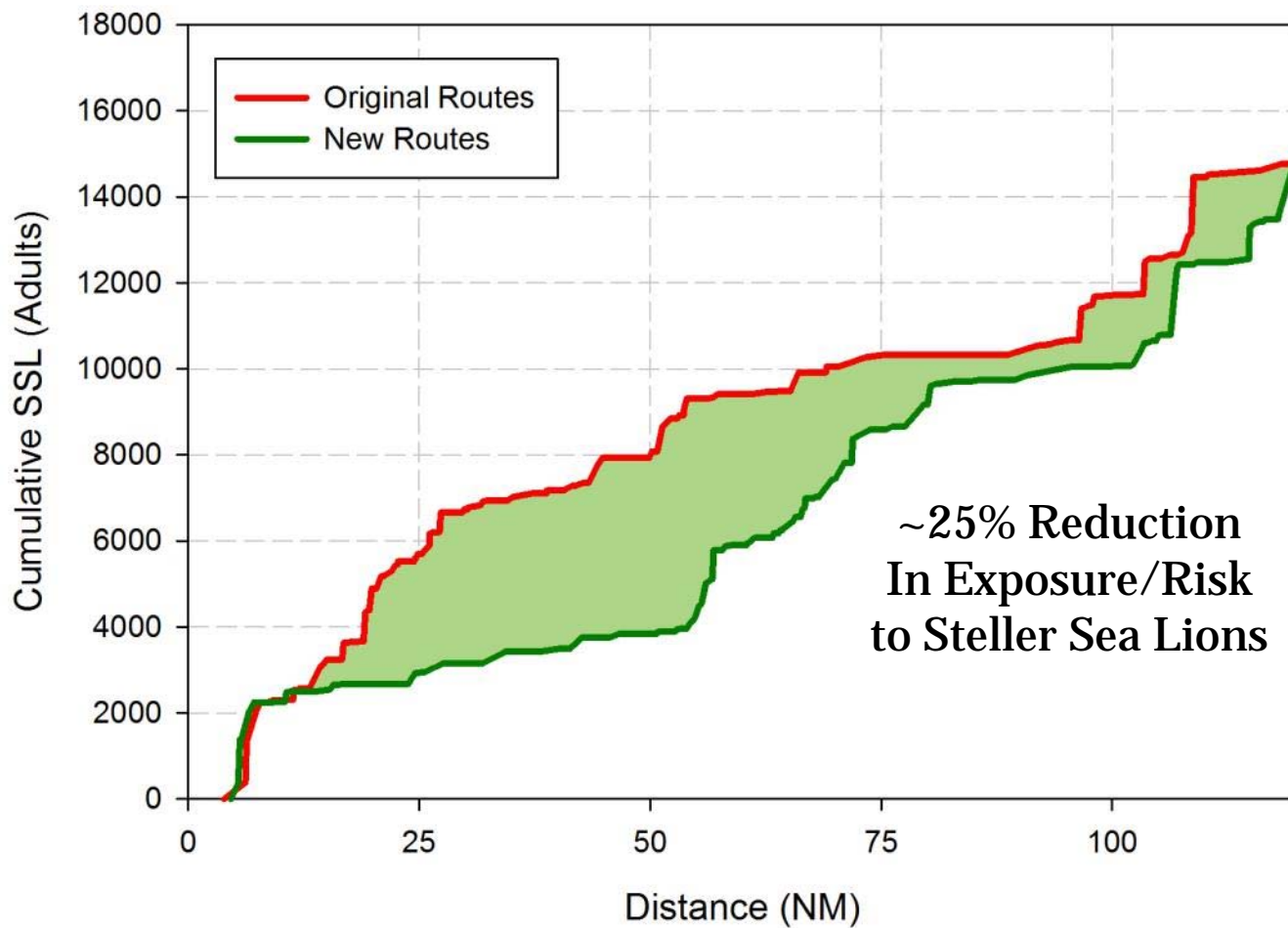
# 2014 Vulnerability Assessments (VA)

- Invasive and Introduced Species
  - Geospatial database of terrestrial species
  - Impacts of predators, grazers
- Contaminants and Pollutants
  - Geospatial database
  - Mercury (Hg) synthesis
  - FUDS (Formerly-Used Defense Sites) “Data Rescue”



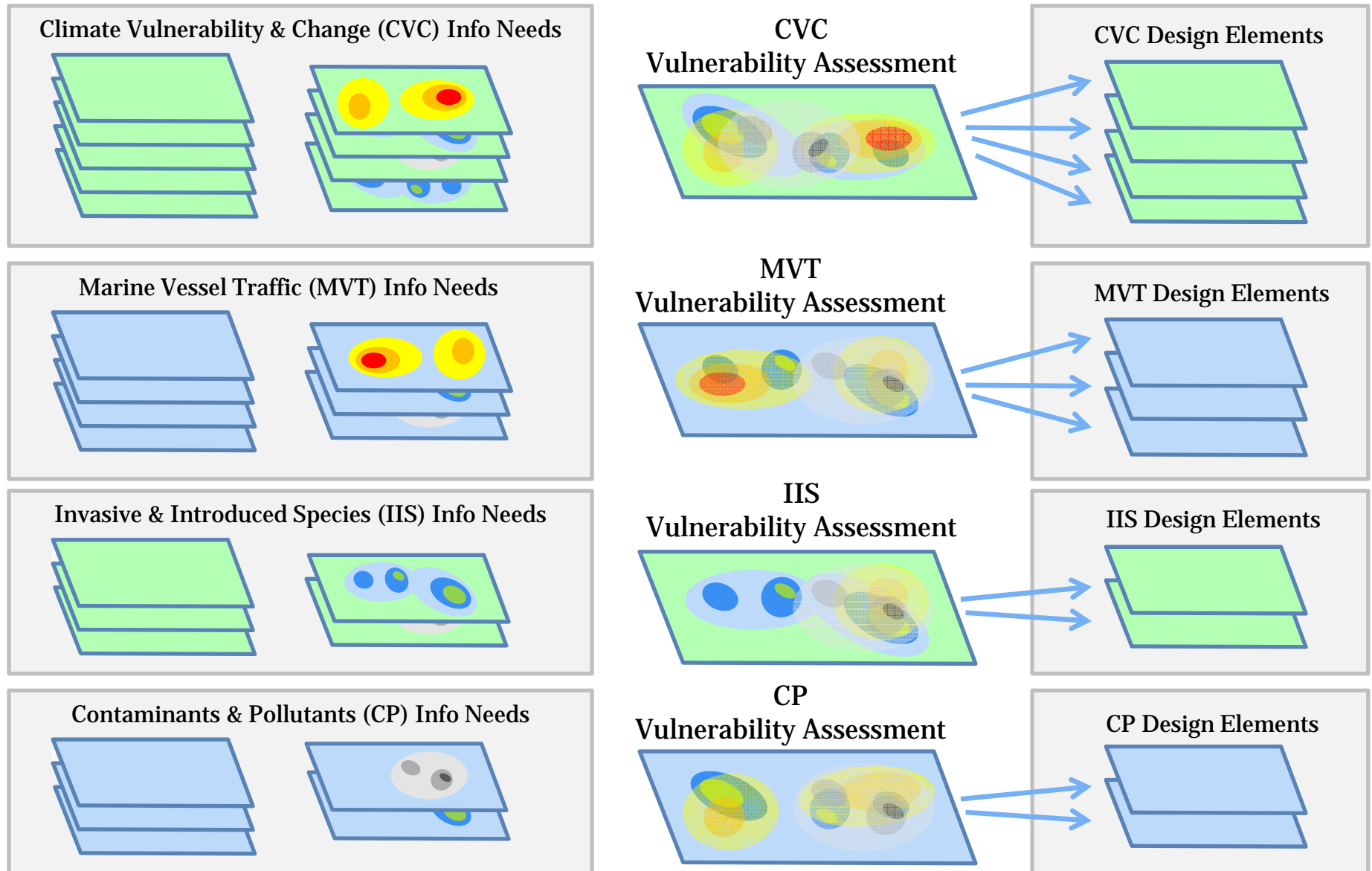








# Landscape Conservation Design



# Questions?

Website: [absilcc.org](http://absilcc.org)

Twitter: [@ABSILCC](https://twitter.com/ABSILCC) 

