

Model-Based Essential Fish Habitat Descriptions for Fish Resources of the Arctic Management Area

DR. JEN MARSH, DR. FRANZ MUETER (UAF CFOS),
DR. JODI PIRTLE (NMFS), JEREMY HARRIS (WDFW)

Ecosystem Committee, January 18, 2023

SSC, February 7, 2023

EFH Descriptions and Identification

EFH Component 1 is descriptions and identification (maps)

- Fishery Management Plan (FMP) text and maps
- Maps based on species distribution models (SDMs) were established in the 2017 Review and refined for 2023 Review for the groundfish and crab FMPs.
- [SDM maps are new for the Arctic FMP in the 2023 Review.](#)

EFH Component 1 information levels

- Level 1: Distribution data are available for some or all portions of the geographic range of the species.
- Level 2: Habitat-related densities or relative abundance of the species are available.
- Level 3: Growth, reproduction, or survival rates within habitats are available.
- Level 4: Production rates by habitat are available. [Not available at this time]

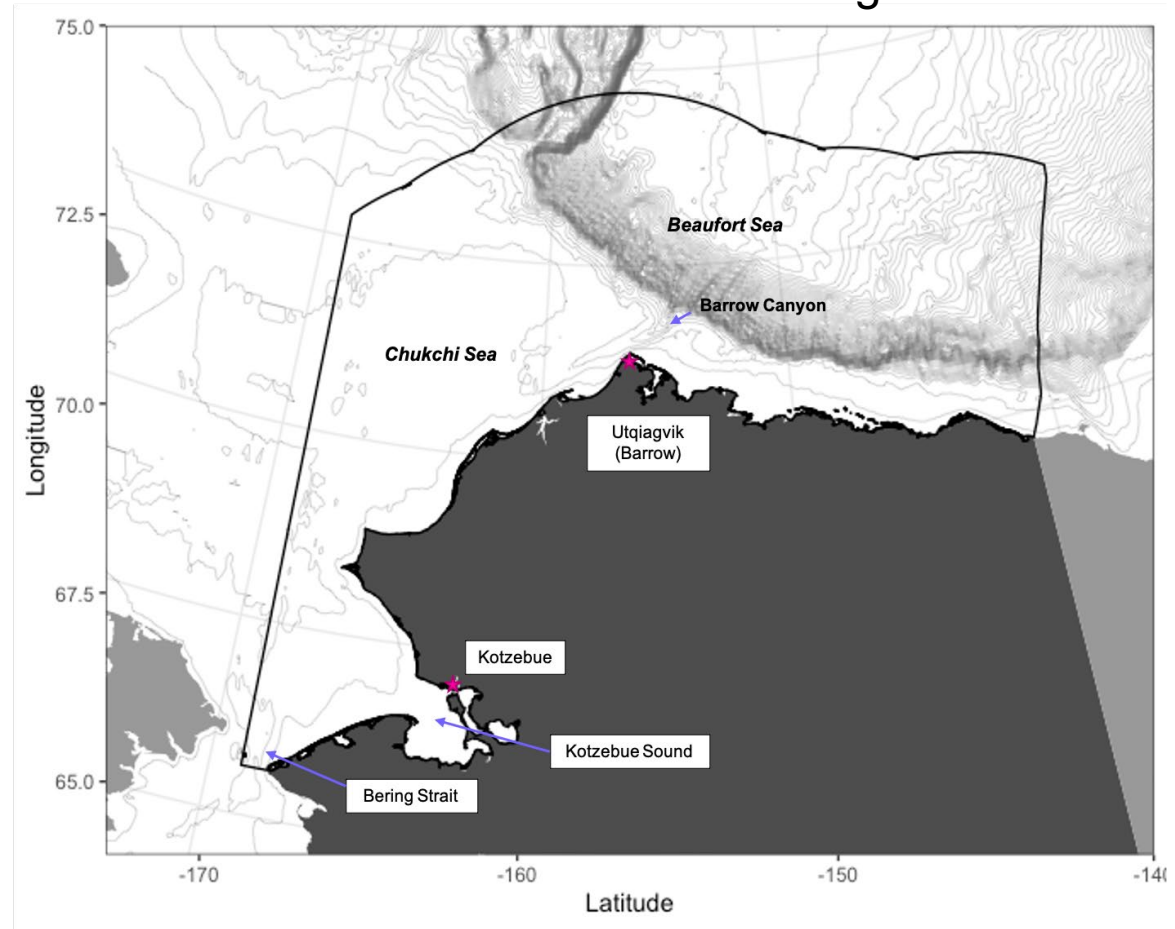
New and revised EFH descriptions and maps for the 2023 Review

- [Arctic FMP EFH Level 1 expanded and EFH Level 3 new.](#)
- [Model-based EFH for the Arctic FMP Marsh et al. In Review](#)

Arctic Fishery Management Plan (2009)

- Prohibits commercial fishing until data indicates a sustainable fishery can be supported.
- Three species were identified as potential commercial stocks, **Arctic cod**, **saffron cod** and **snow crab**:
 - Preliminary stock assessments
 - EFH described and mapped

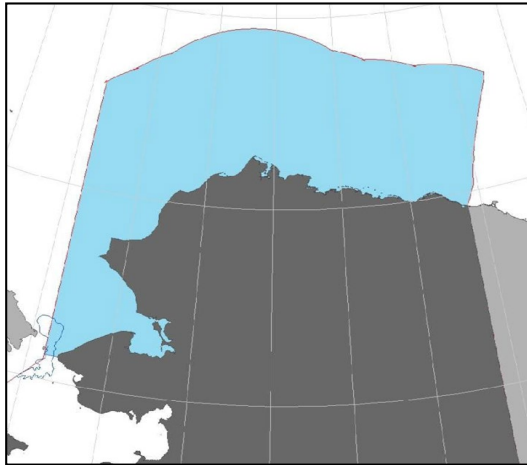
Arctic Management Area



2017 EFH Review



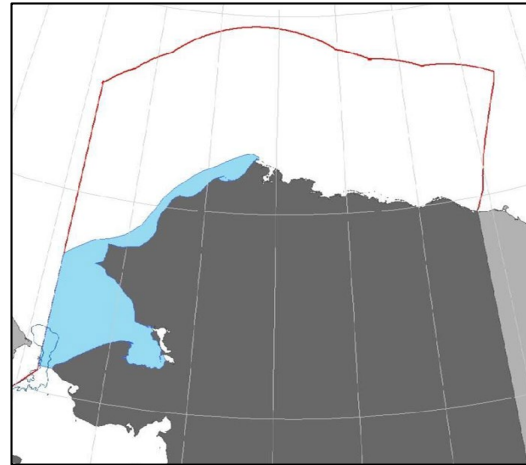
Arctic cod



- Benthic, pelagic and epipelagic waters along entire shelf and upper slope (0-500 m depth)
- Ice associated



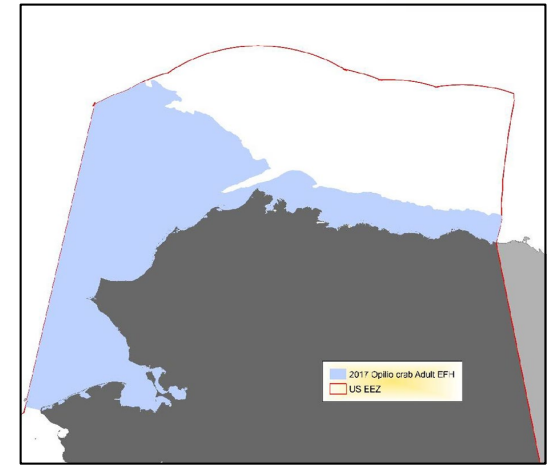
Saffron cod



- Pelagic and epipelagic waters along the coastline (0-50 m depth)
- Substrate(s): sand and gravel



Snow crab



- Epibenthic on the inner and middle shelf (0-100 m depth)
- Substrate: mostly mud

Model-based EFH Update for Arctic Species Life Stages

First SDM EFH maps for Arctic FMP species

- 13 EFH Level 1 maps (distribution),

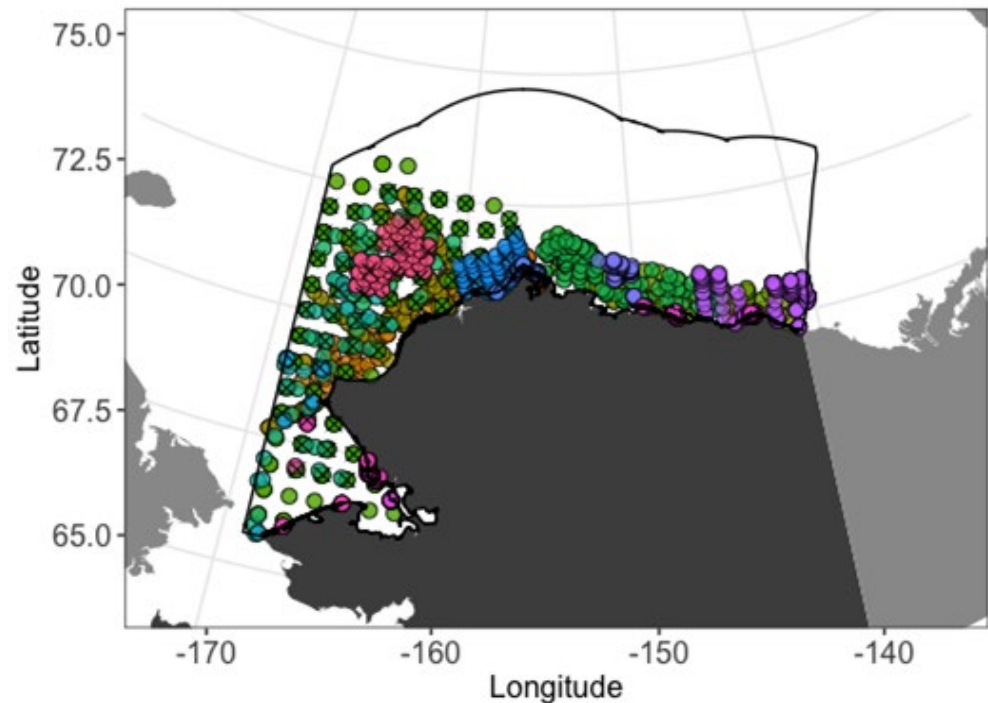
Species	Larvae	Early Juvenile	Late Juvenile	Adult
Arctic cod (Length, mm)	< 30	31 – 70 (age-0)	71 – 120	> 120
Saffron cod (Length, mm)	< 27	28 – 70 (age-0)	71 – 190	> 190
Snow crab (Carapace width, mm)	--	< 34 (immature)	35 – 61 (adolescent male) 35 – 46 (adolescent female)	> 62 (mature male) > 46 (mature female)

- 3 EFH Level 3 maps (habitat related vital rates), and
- EFH area comparisons between warm and cold conditions as a first approach to climate-informed EFH mapping.

Species Occurrence Data

- Combined multiple independent surveys using different gear types.
- Arctic study area is difficult to sample; remote, seasonally ice-covered.
- No historic, systematic surveys.
- Species occurrence data from summer months (July –September) for years 2000 – 2018.

Marsh et al. Arctic EFH Maps, section 2.2, page 10



ABLNearshoreTask_Arctic	ANIMIDA_2014	OD0710	SHELFZ13	VonBiela_Arctic
ACES	ANIMIDA_2015	OS180	SYNTHESIS	WCS_ABLP
AFF2015	ArcticEis_2012	OS190	TB_2012	WWW0902
AKCH10	ArcticIES17	RUSALCA_2004	TB_2013	WWW0904
AKCH11	Beau08	RUSALCA_2009	TB_2014	WWW1003
AMBON_2015	BOEM_2011	RUSALCA_2012	USACE_Kaktovik	
AMBON17	COMIDA_2009	SHELFZ	USACE_Kotzebue	

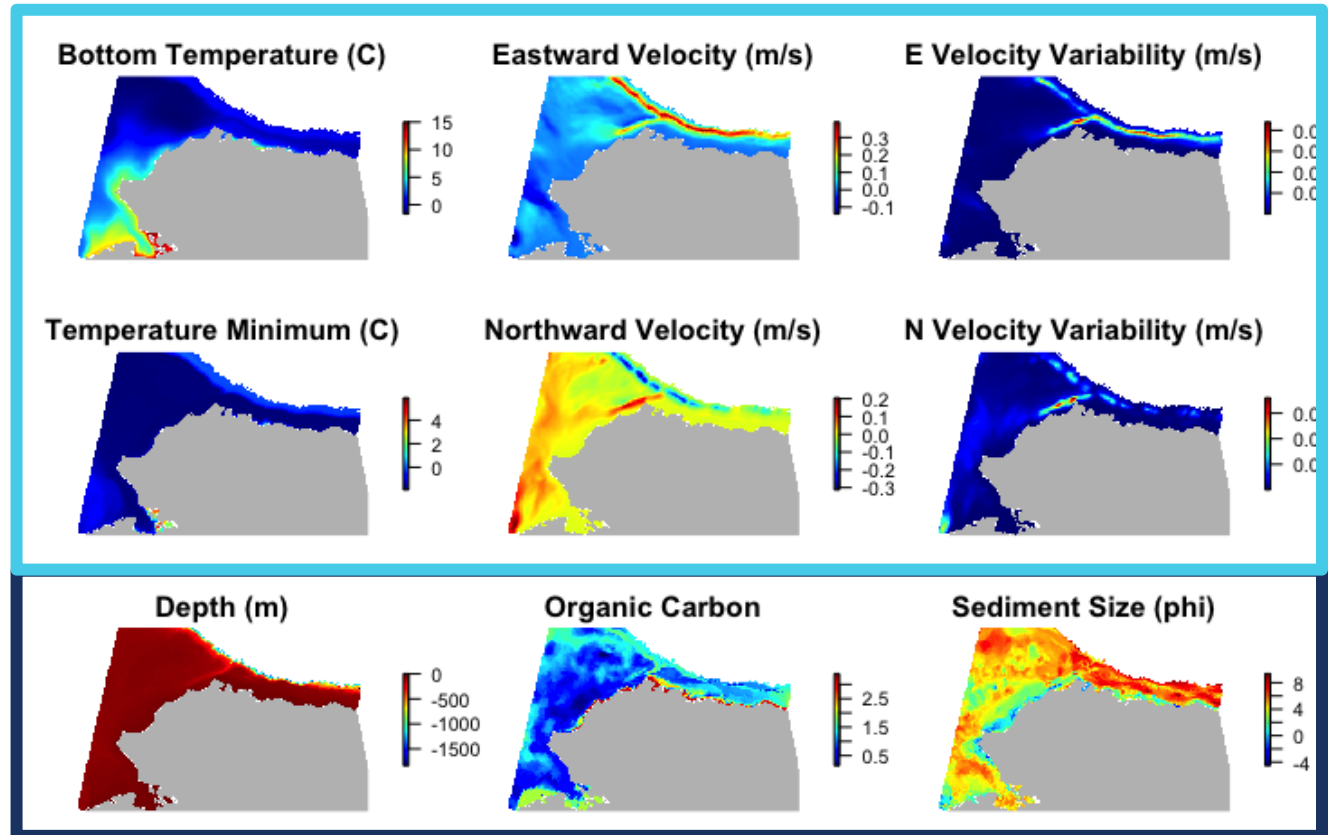
Overview SDM EFH Mapping Methods

- Maximum Entropy (MaxEnt) models with presence-only data
 - To combine multiple surveys and gear types in a first approach to link habitat characteristics of the study area to species distribution.
 - Methods were co-developed with Laman et al. 2023 Gulf of Alaska groundfish early juvenile life stage EFH Level 1 SDM maps.
- Model Performance Metrics:
 - k-fold cross validation, Beta (L1 regularization multiplier), AUC
- Model Selection Metric:
 - AIC
- EFH Level 1 Maps of Habitat-related Distribution:
 - All locations for a species' life stage with probability of suitable habitat $\geq 5\%$.
- EFH Level 3 Maps of Habitat-related Vital Rates:
 - Growth rates (Laurel et al. 2016; 2017).
 - Product of temperature-dependent growth potential and probability of suitable habitat.
- Climate-informed EFH Level 1 Maps
 - EFH mapped separately for warm and cold years

Habitat Covariates

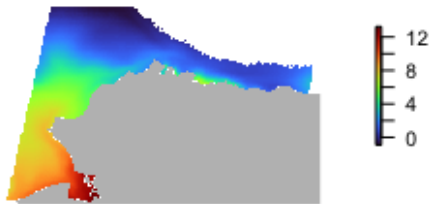
Temporally **dynamic**
and **static** covariates:

- Pacific Arctic ROMS (Danielson and Hedstrom)
- Mean of summer values from 2000 – 2018
- Bathymetry (Lewis)
- Sediment (Jenkins)

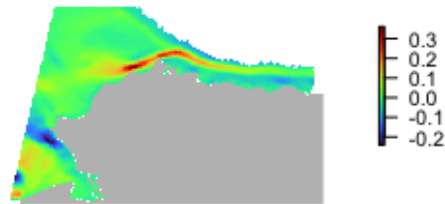


Surface Habitat Covariates

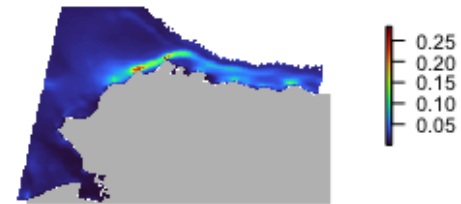
Surface Temperature (C)



Eastward Velocity (m/s)



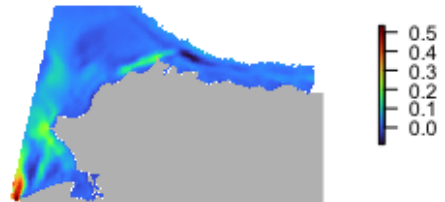
E Velocity Variability



Temperature Minimum (C)



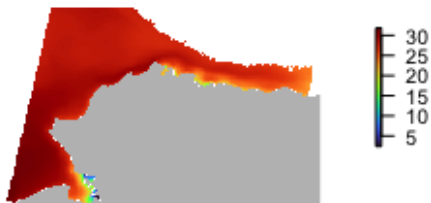
Northward Velocity (m/s)



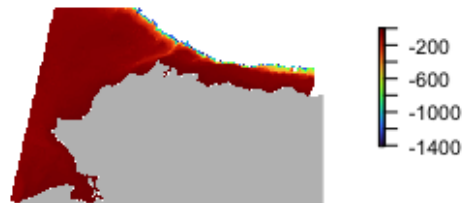
N Velocity Variability



Surface Salinity



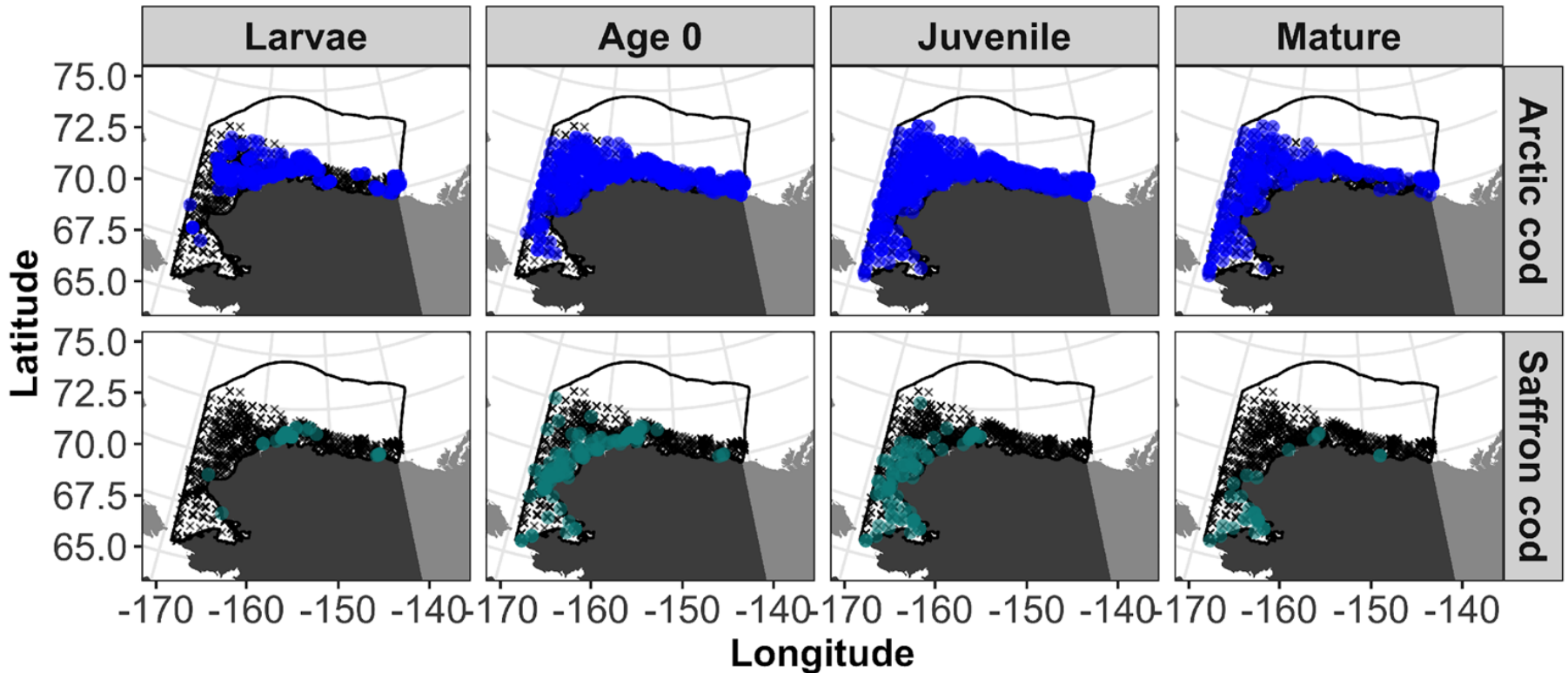
Depth (m)



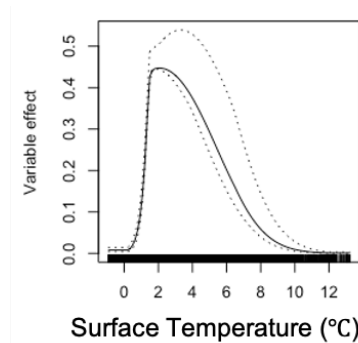
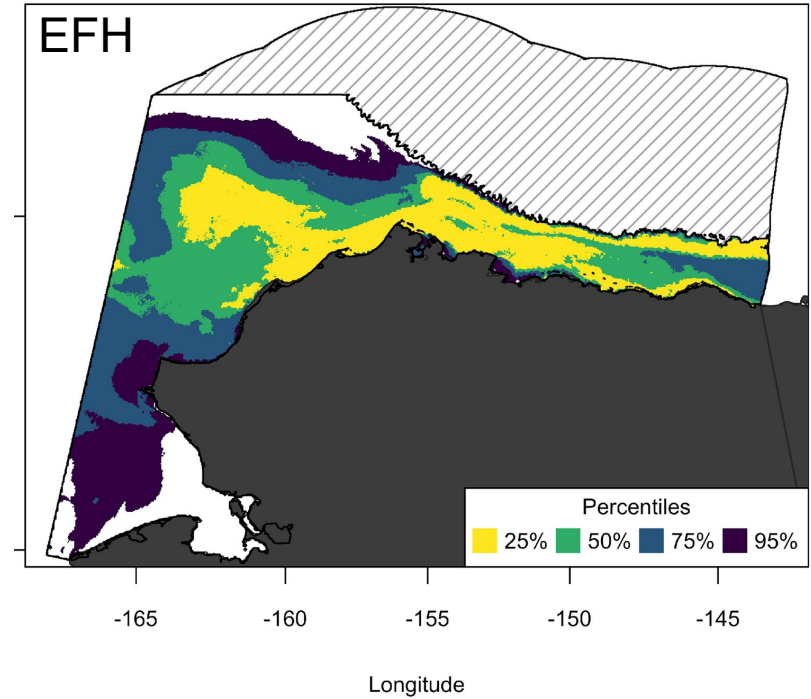
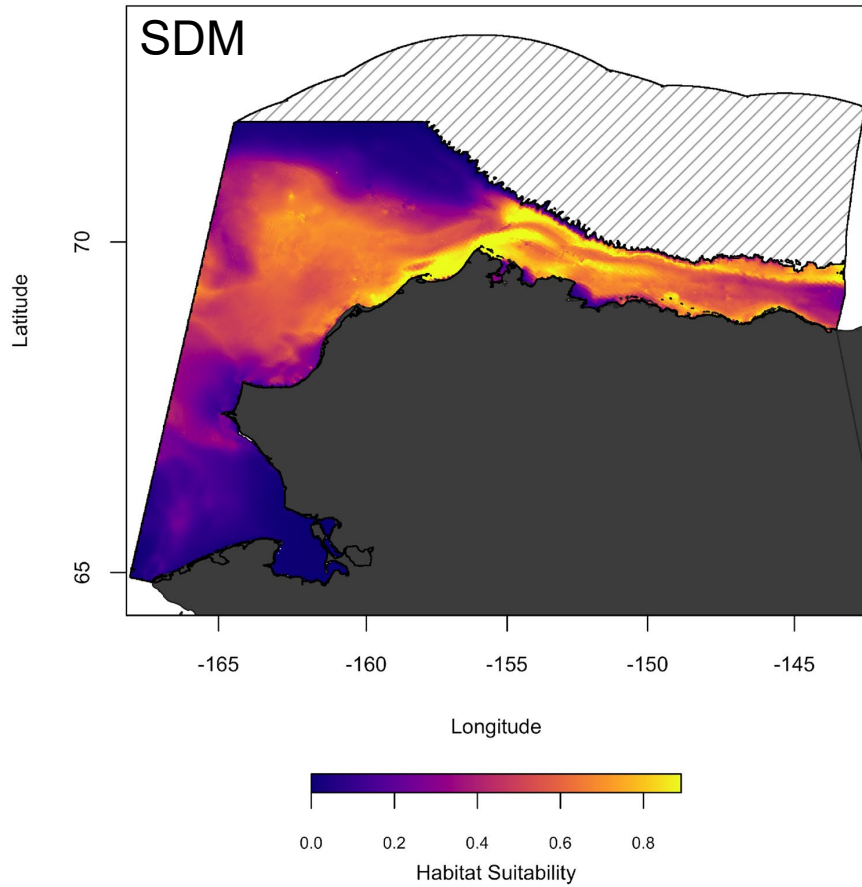
Pelagic life stages:

- Larval Arctic cod
- Age-0 Arctic cod
- Larval saffron cod

Occurrence Data for Arctic Cod and Saffron Cod

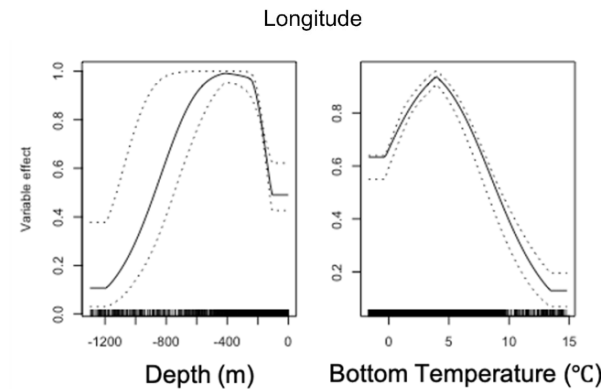
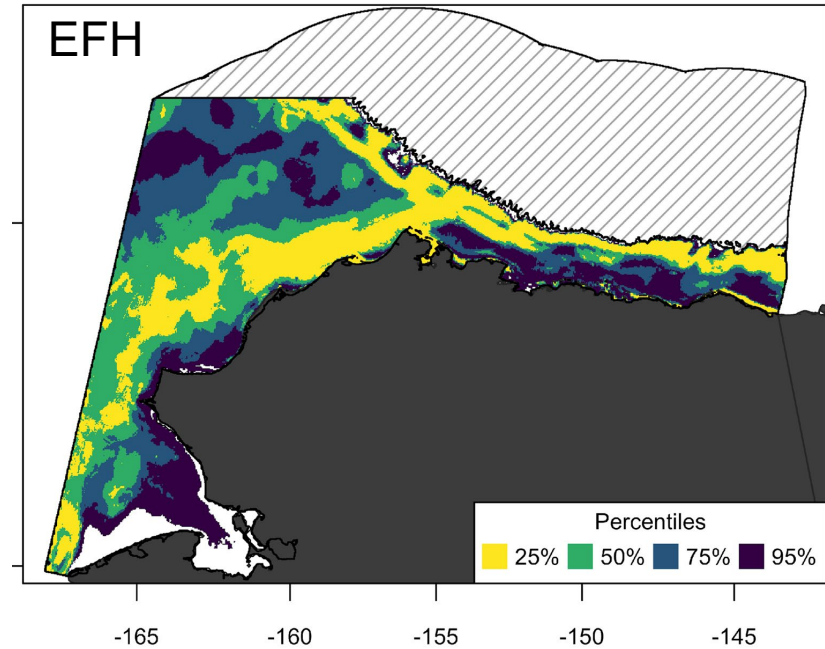
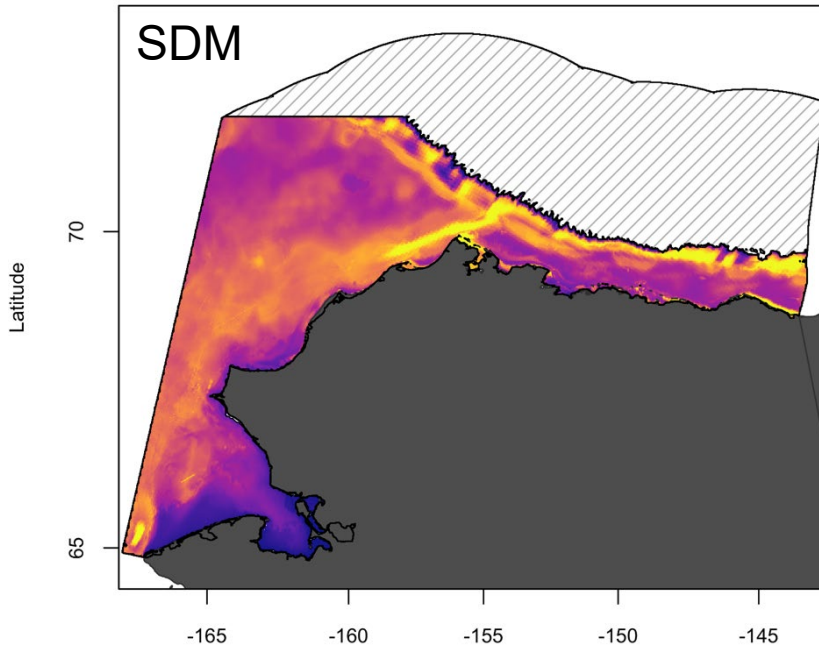


Age-0 Arctic Cod



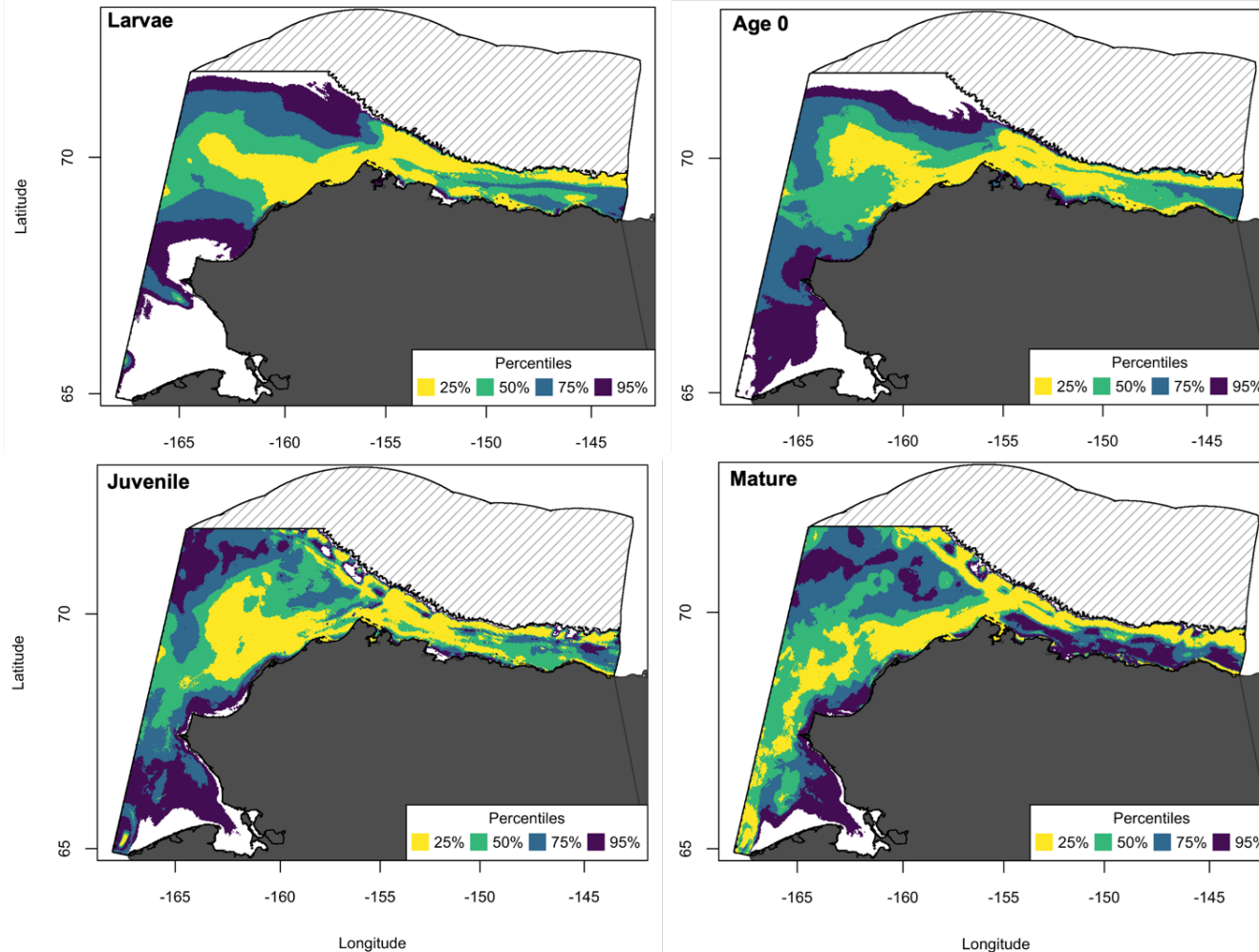
Marsh et al. Arctic EFH Maps, section 3.1.2, page 24

Mature Arctic Cod

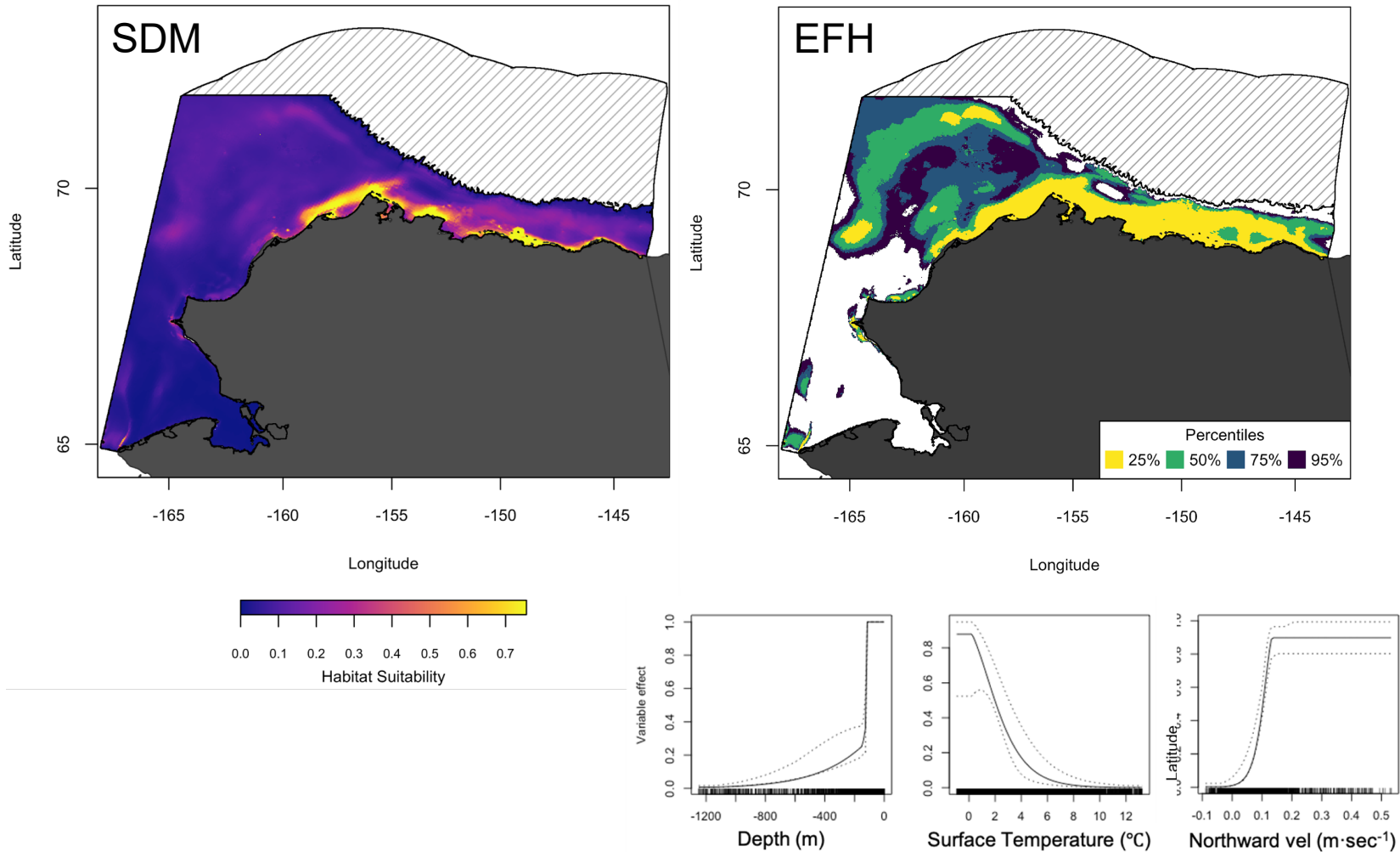


Marsh et al. Arctic EFH Maps, section 3.1.4, page 25

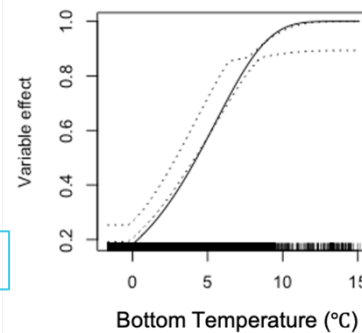
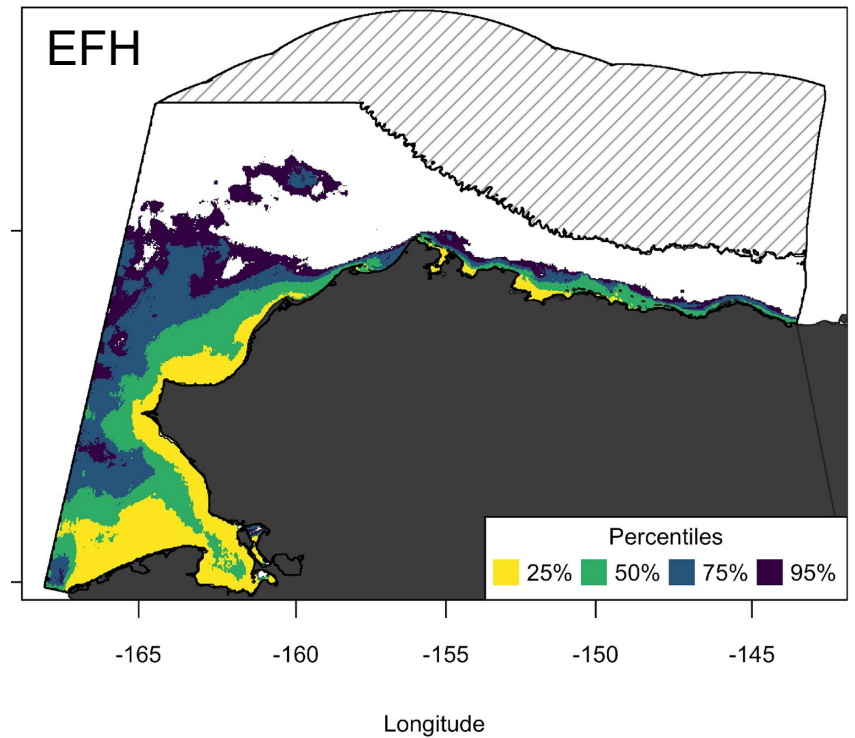
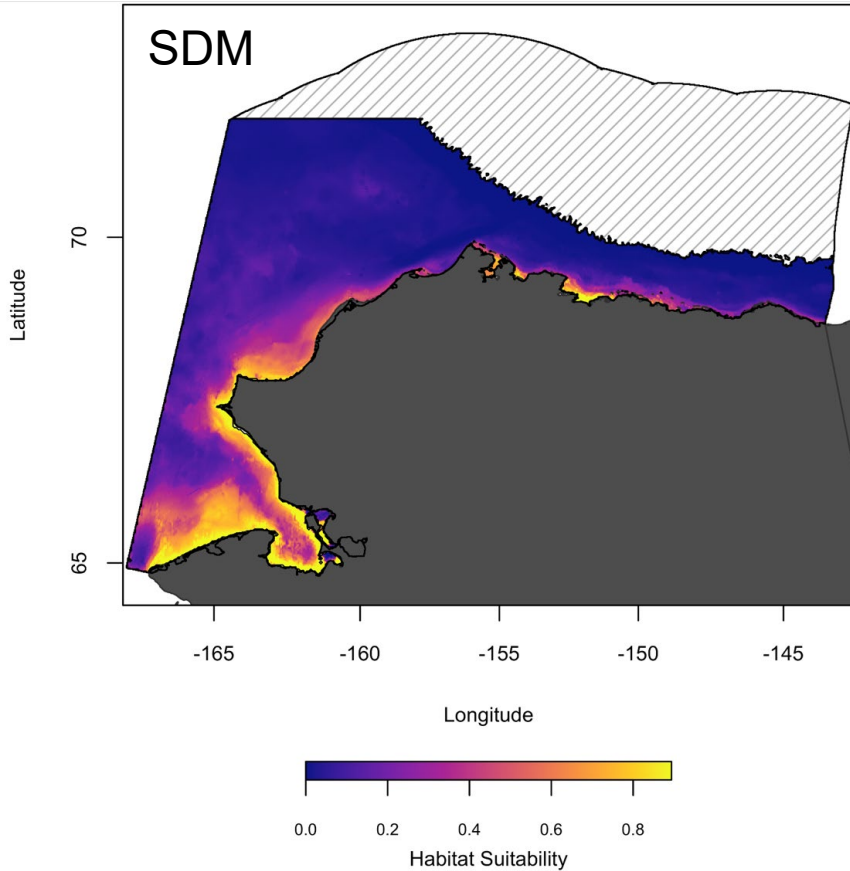
Arctic Cod EFH Maps



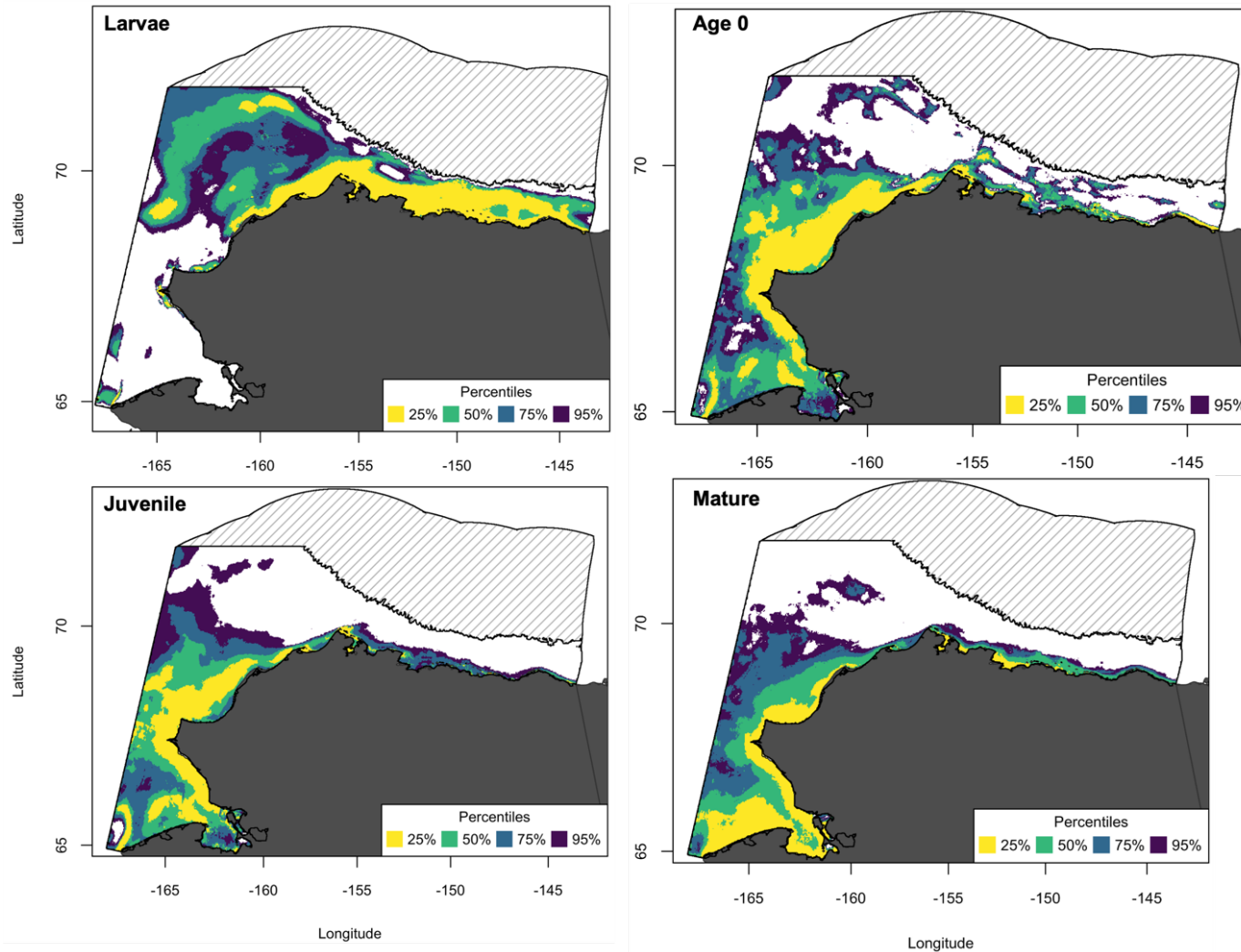
Larval Saffron Cod



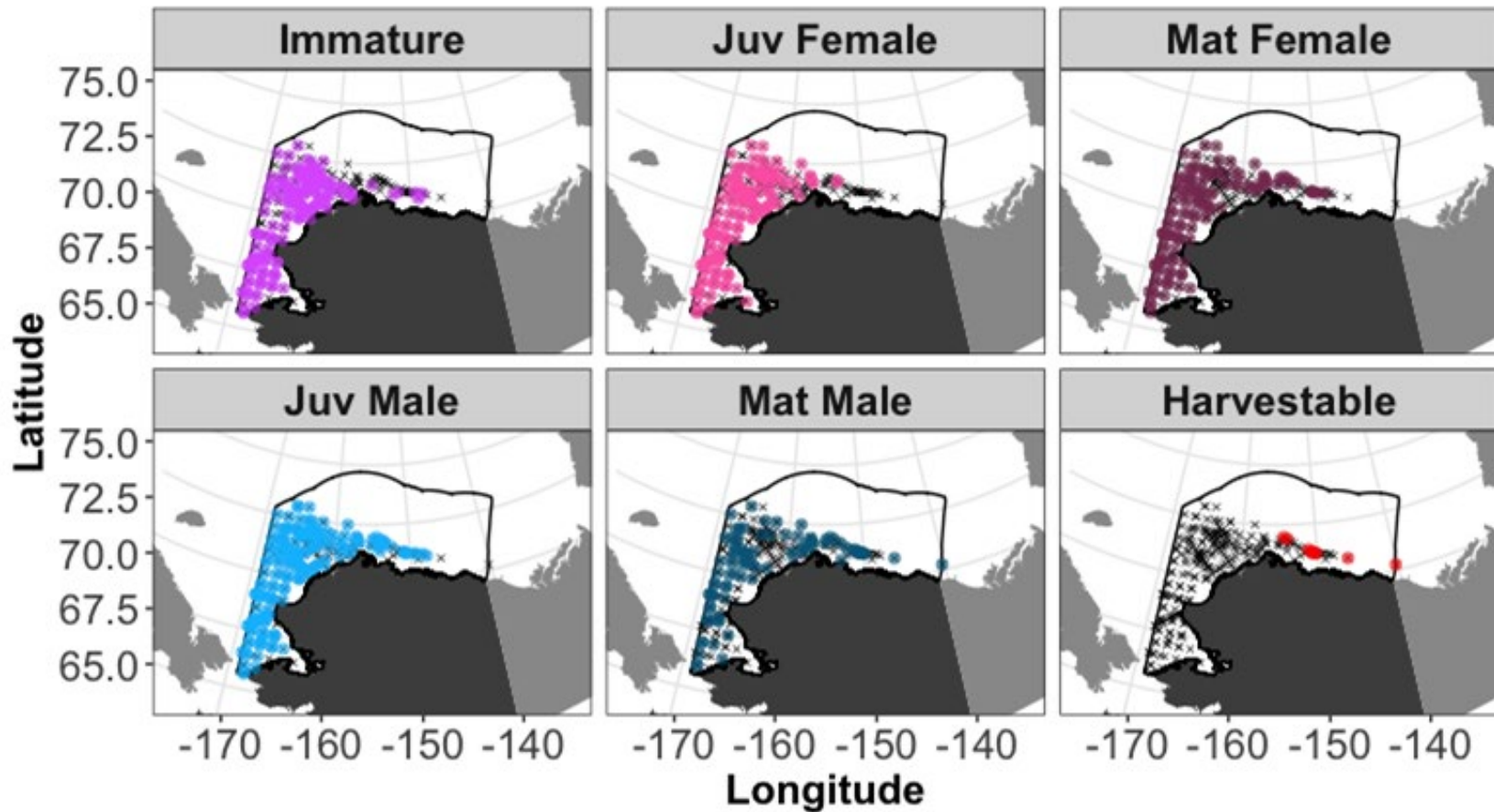
Mature Saffron Cod



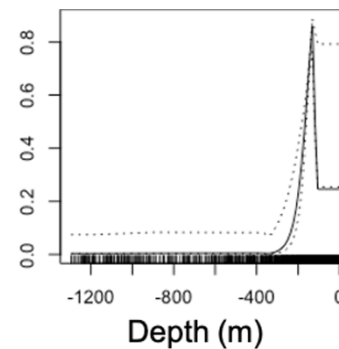
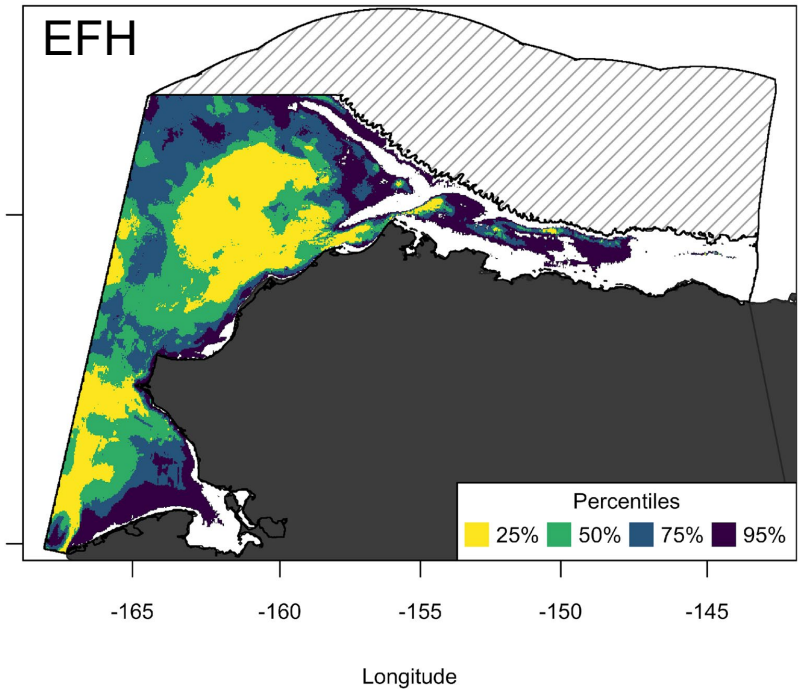
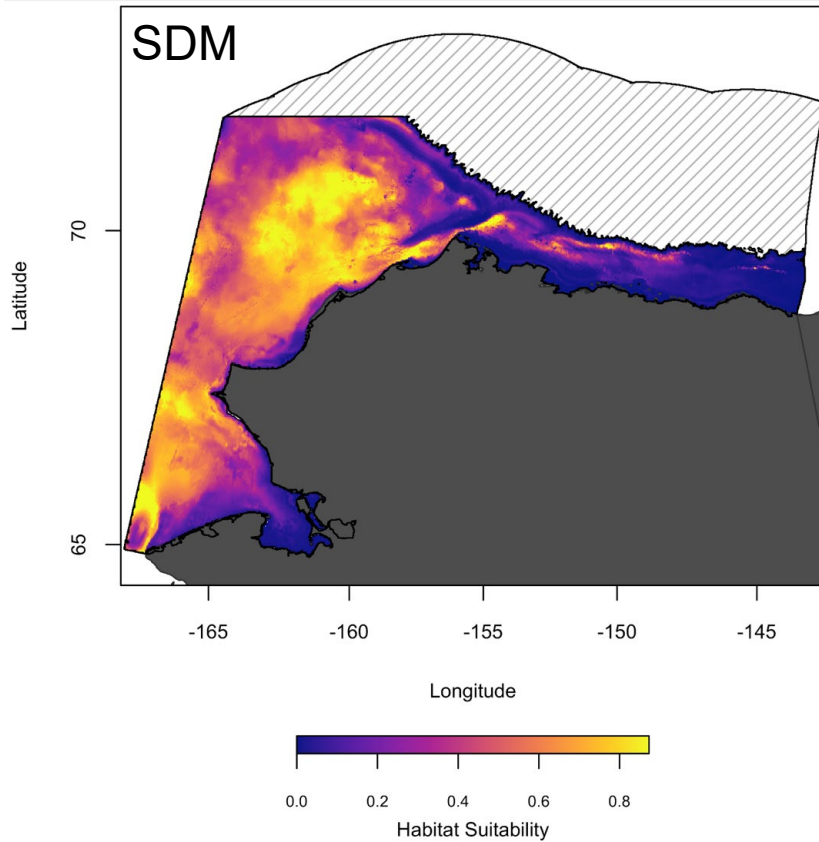
Saffron Cod EFH Maps



Snow Crab Occurrence by Life Stage

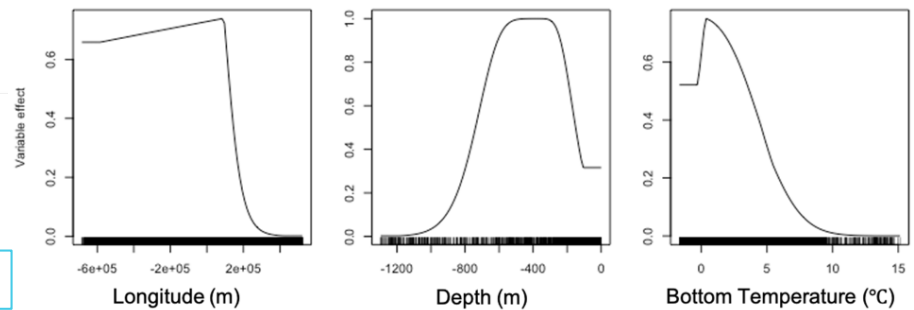
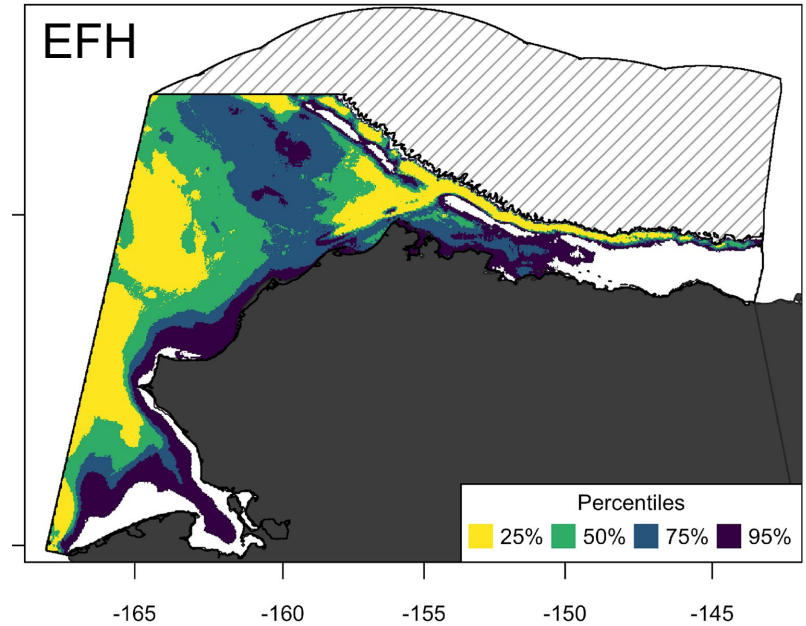
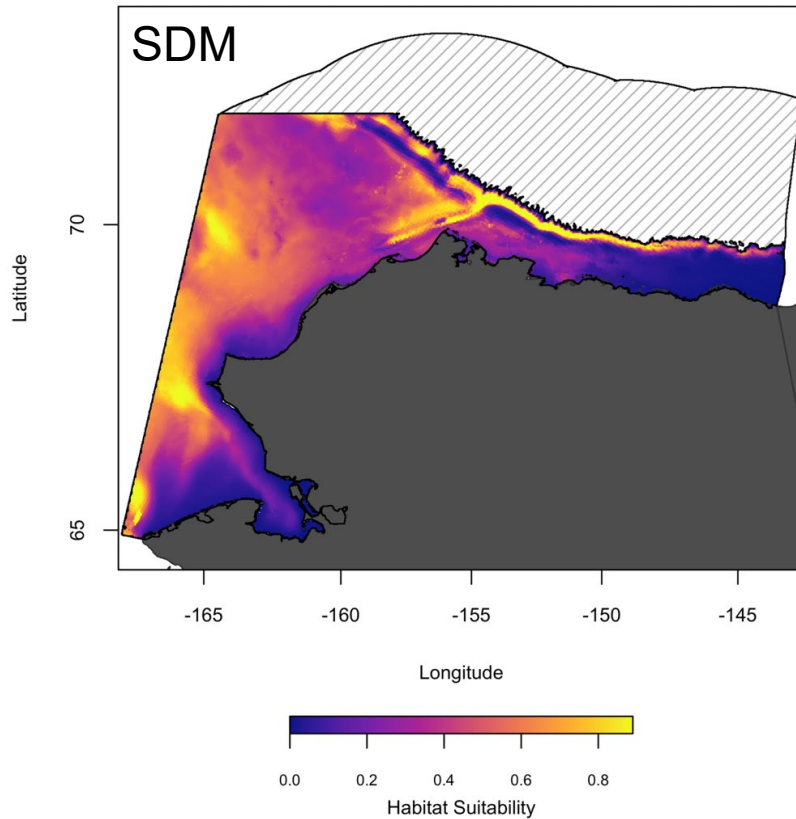


Immature Snow Crab (Males and Females)

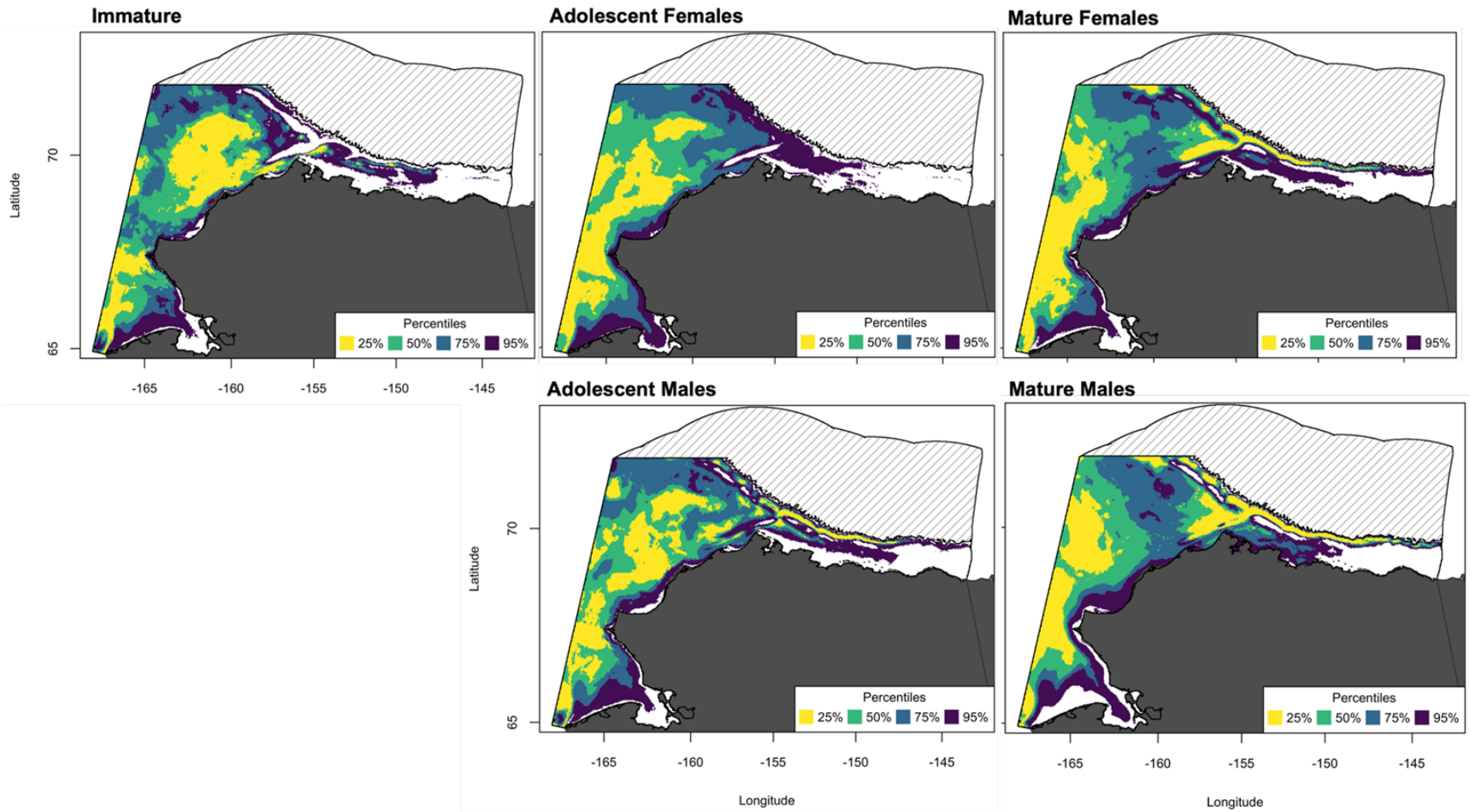


Narrow depth range
~ 100 – 250m.

Mature Male Snow Crab



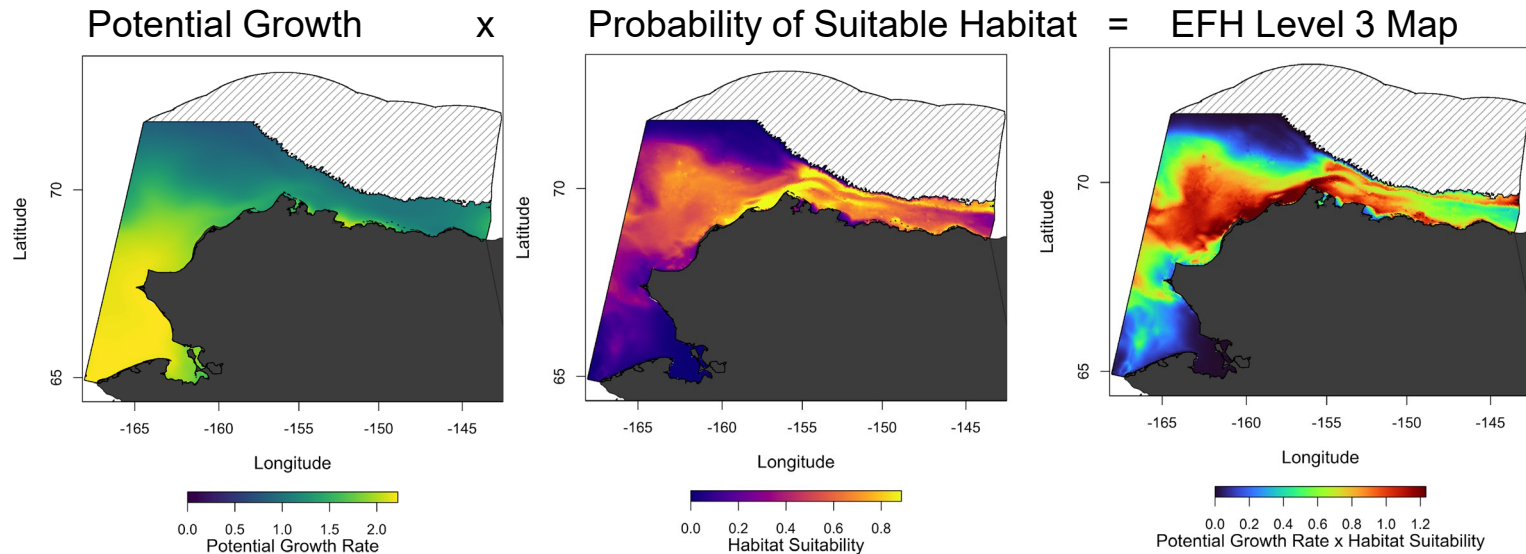
Snow Crab EFH Maps



Marsh et al. Arctic EFH Maps, section 3.3.6, page 43

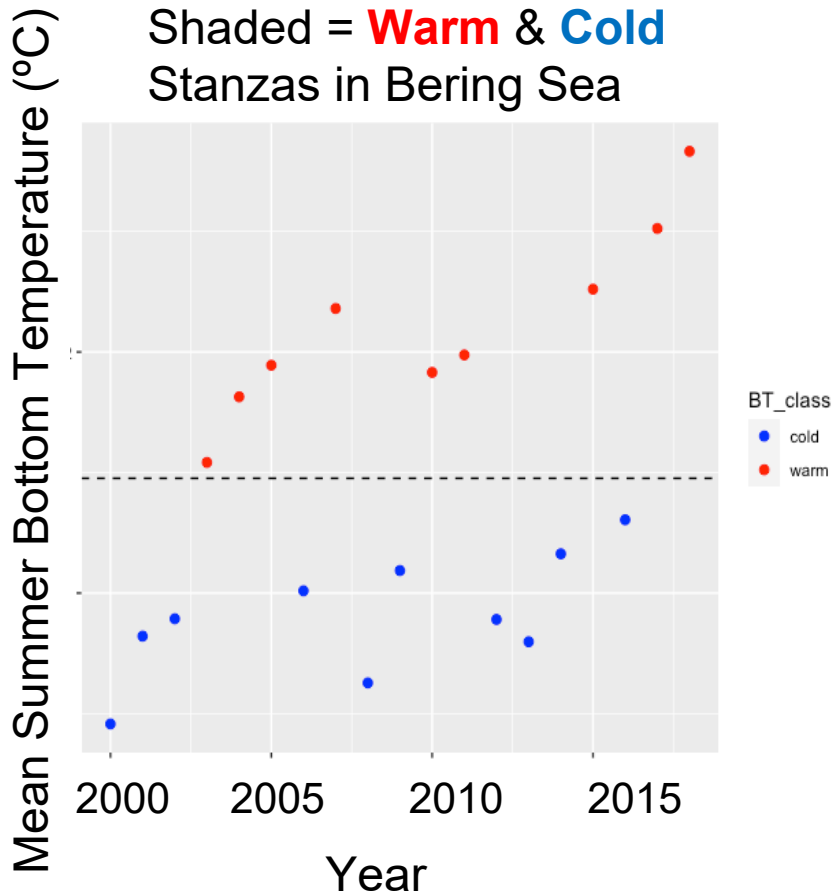
EFH Level 3 Maps

Age-0 Arctic cod

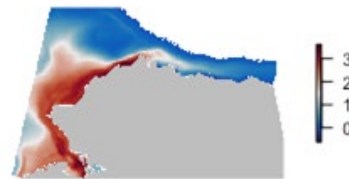


- EFH Level 3 maps of habitat-related vital rates for Arctic cod age-0 and juveniles, and saffron cod juveniles.
- Product of published temperature-dependent growth rates (Laurel et al. 2016; 2017) and SDM maps of the probability of suitable habitat.
- Methods co-developed with Laman et al. study for groundfish.

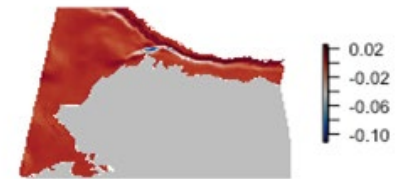
Warm and Cold Conditions



Bottom Temperature



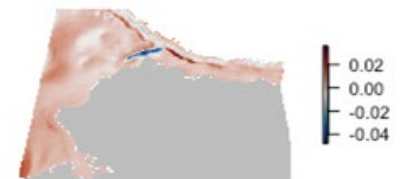
Eastward Velocity (m/s)



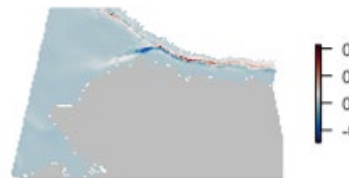
Temperature Minimum



Northward Velocity (m/s)



E Velocity Variability

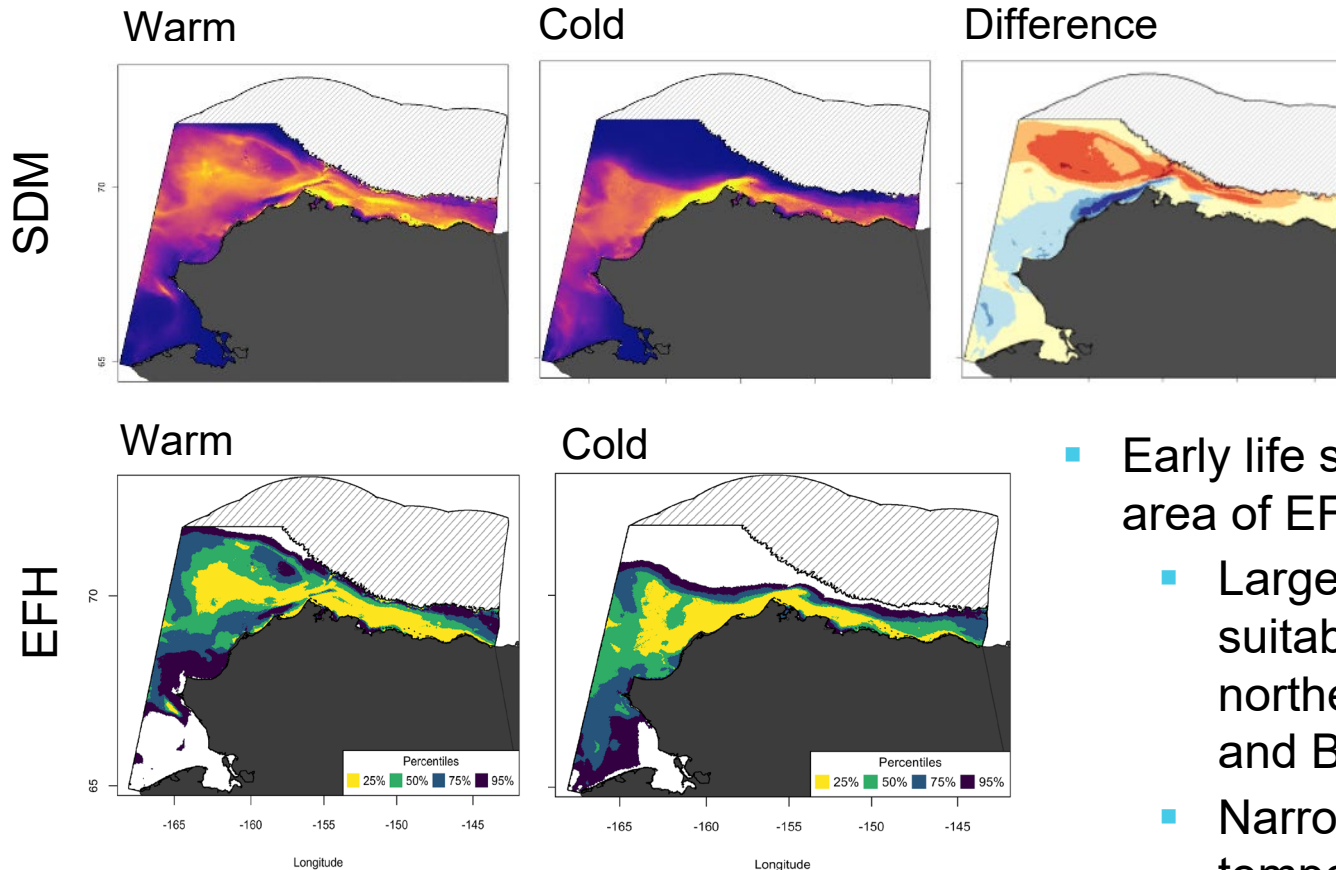


N Velocity Variability



Difference among dynamic covariates in warm and cold conditions.

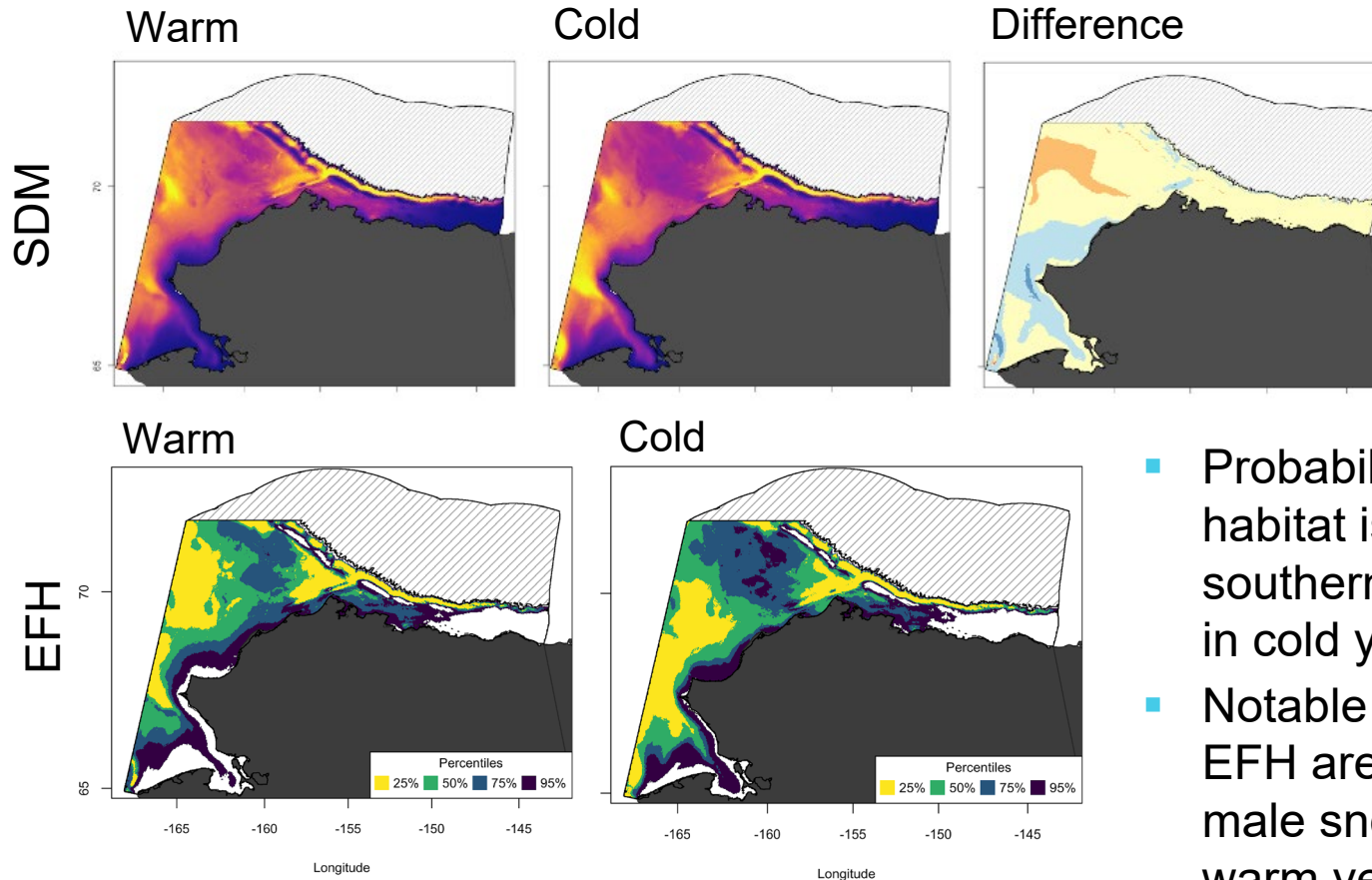
Age-0 Arctic Cod – Warm Cold Comparison



- Early life stages larger area of EFH in warm years
 - Larger area of suitable habitat in northern Chukchi Sea and Beaufort Sea.
 - Narrow preferred temperature range.

Marsh et al. Arctic EFH Maps, section 3.5.1, page 56, and Appendix 2, page 80

Mature Male Snow Crab – Warm Cold Comparison



- Probability of suitable habitat is higher in the southern Chukchi Sea in cold years.
- Notable decrease in EFH area for mature male snow crab in warm years.

Conclusions and Future Recommendations

Conclusions:

- NMFS recommends updating the EFH sections of the Arctic FMP to include the revised text descriptions and maps from this study, including the new climate-informed EFH maps.
- Increases in data availability and SDM methods advances allowed us to update and substantially refine the Arctic EFH descriptions and maps.
 - Model performance was good to acceptable in all cases.
- Ontogenetic distribution shifts support fitting separate life stage models.
- Separate models for warm and cold conditions was a first step in temporally dynamic, climate-informed SDM EFH mapping.

Future research recommendations:

- Continue to refine models as new survey data becomes available;
- Consider other covariates such as predator, prey, and competitor fields;
- Move towards temporally dynamic models; and
- Explore alternative modeling methods to predict abundance.

THANK YOU



JEN MARSH

Jennifer.M.Marsh@gmail.com

JODI PIRTLE

jodi.pirtle@noaa.gov