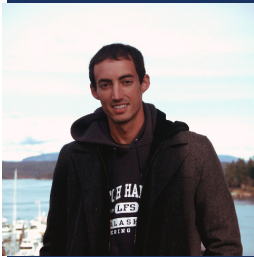


CP CHINOOK AND CHUM SALMON BYCATCH REDUCTION INCENTIVE PLAN AGREEMENT

ANNUAL REPORT 2020

April 2021
NPFMC



Presenters: Stephanie Madsen
Austin Estabrooks



PRIMARY IPA COMPONENTS

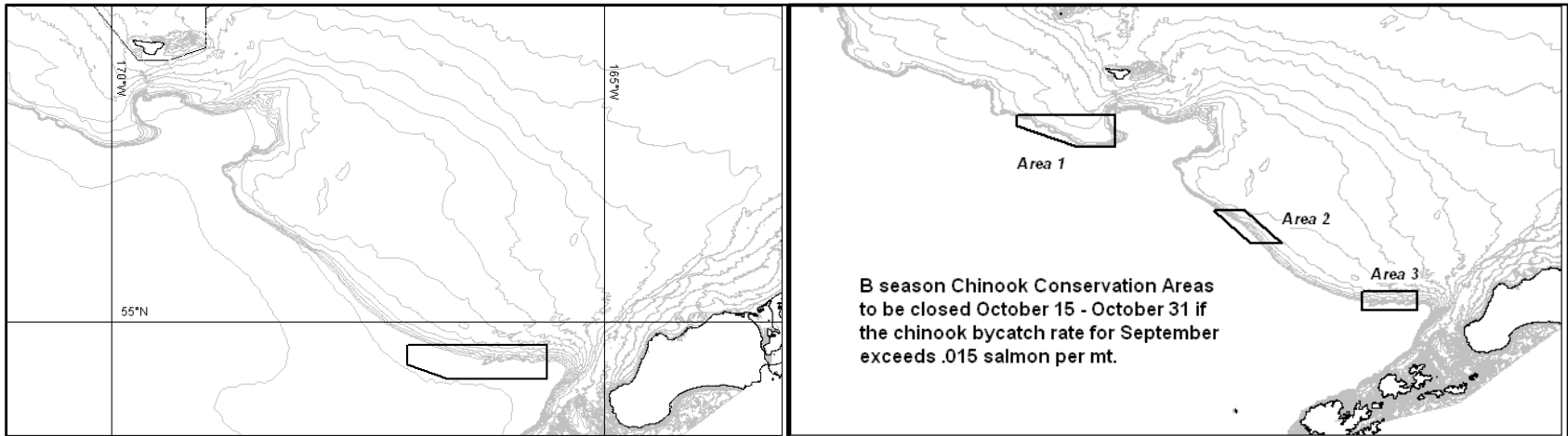
- Data gathering, monitoring, reporting, information sharing
- A-season closed area and conditional B-season closed areas
- Identification of bycatch avoidance areas, Chinook: A & B seasons, chum: B season only
- Fishing area prohibitions for vessels with poor bycatch performance
- Vessel outlier penalties
- Salmon excluder requirement



CHINOOK CONSERVATION AREAS

735 square mile area closed to all pollock fishing 100% of the time during A- season

Areas totaling 1,295 square miles closed to CP pollock fishing Oct 15-Oct 31 if the Chinook bycatch rate for September exceeds 1.5 Chinook per 100 tons pollock.



CHINOOK PSC AND POLLOCK CATCH

A season

Pollock (mt)	Chinook (n)	Chum (n)
288,150	8,930	332

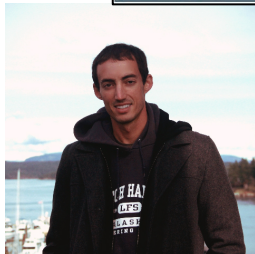
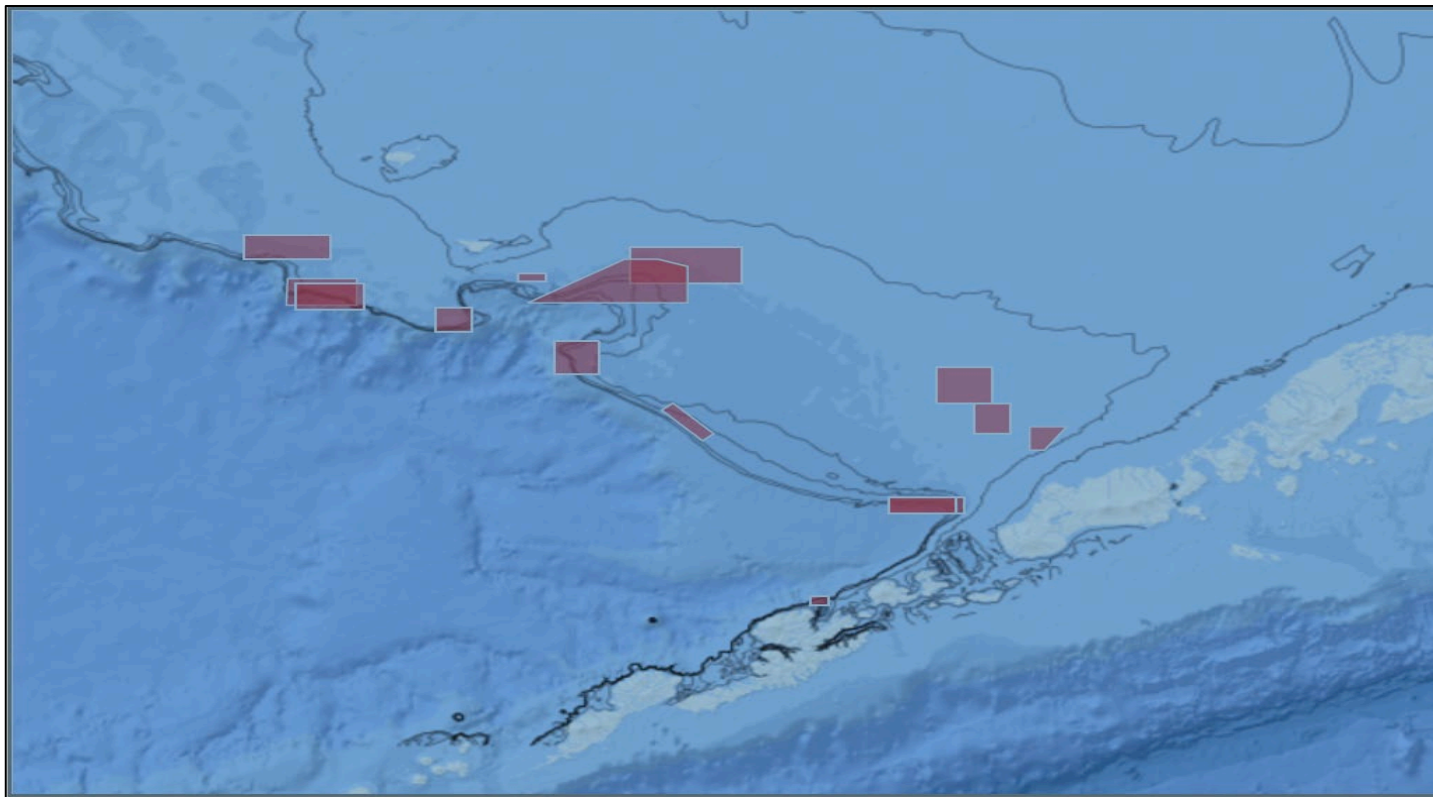
B season

Pollock (mt)	Chinook (n)	Chum (n)
308,482	4,708	85,697

Catch totals include all IPA participants (PCC, HSCC, OP, CDQ)



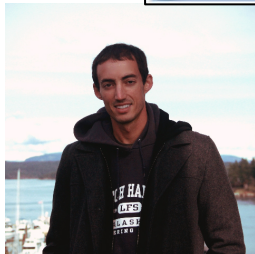
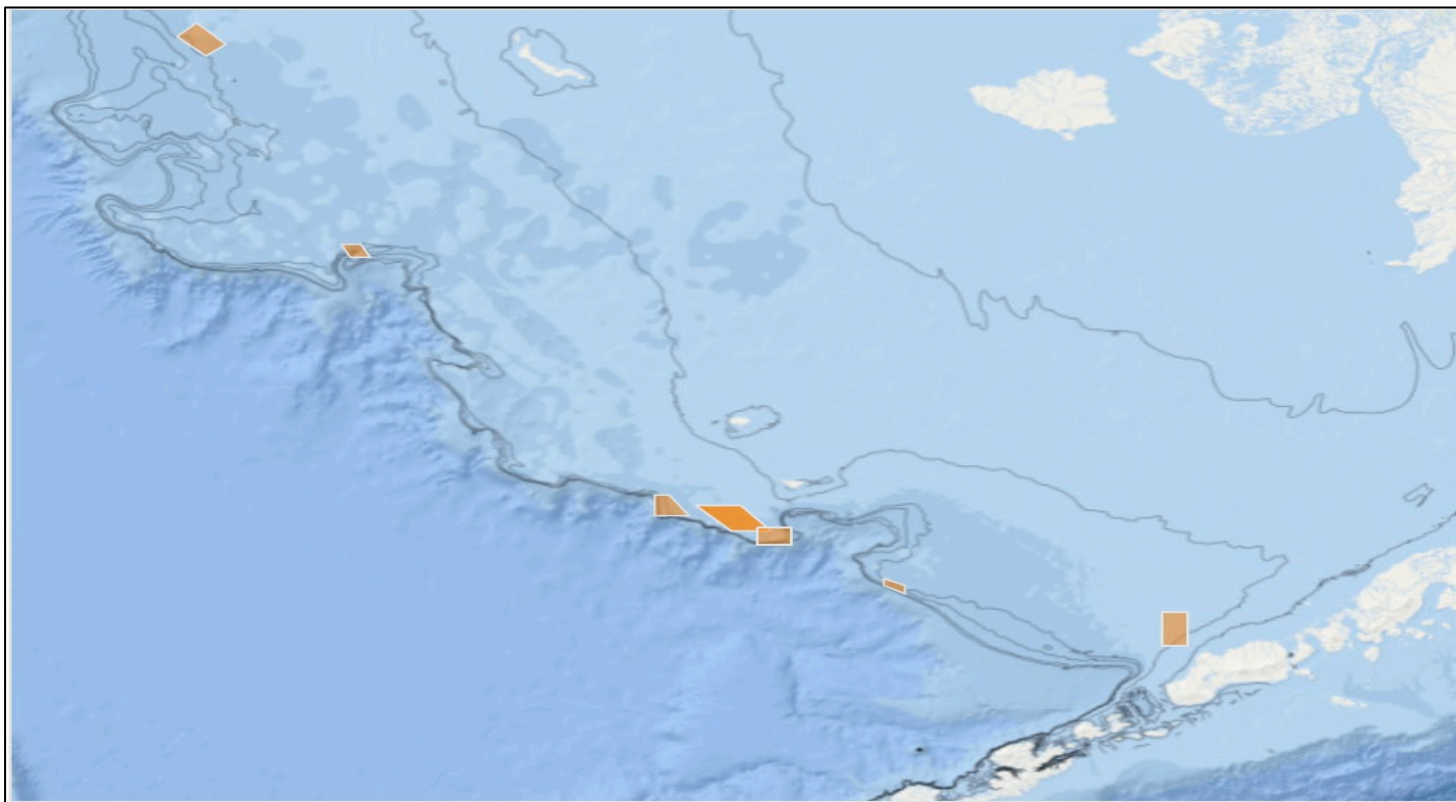
CHINOOK BYCATCH AVOIDANCE AREAS, CP SECTOR 2020



Week	1/ 30	2/ 13	2/ 27	3/ 12	3/ 27	4/3	9/ 24	10/ 1	10/ 8	10/ 15	10/ 22
Number of CPs excluded from BAAs	11	2	8	1	7	7	6	4	7	10	8



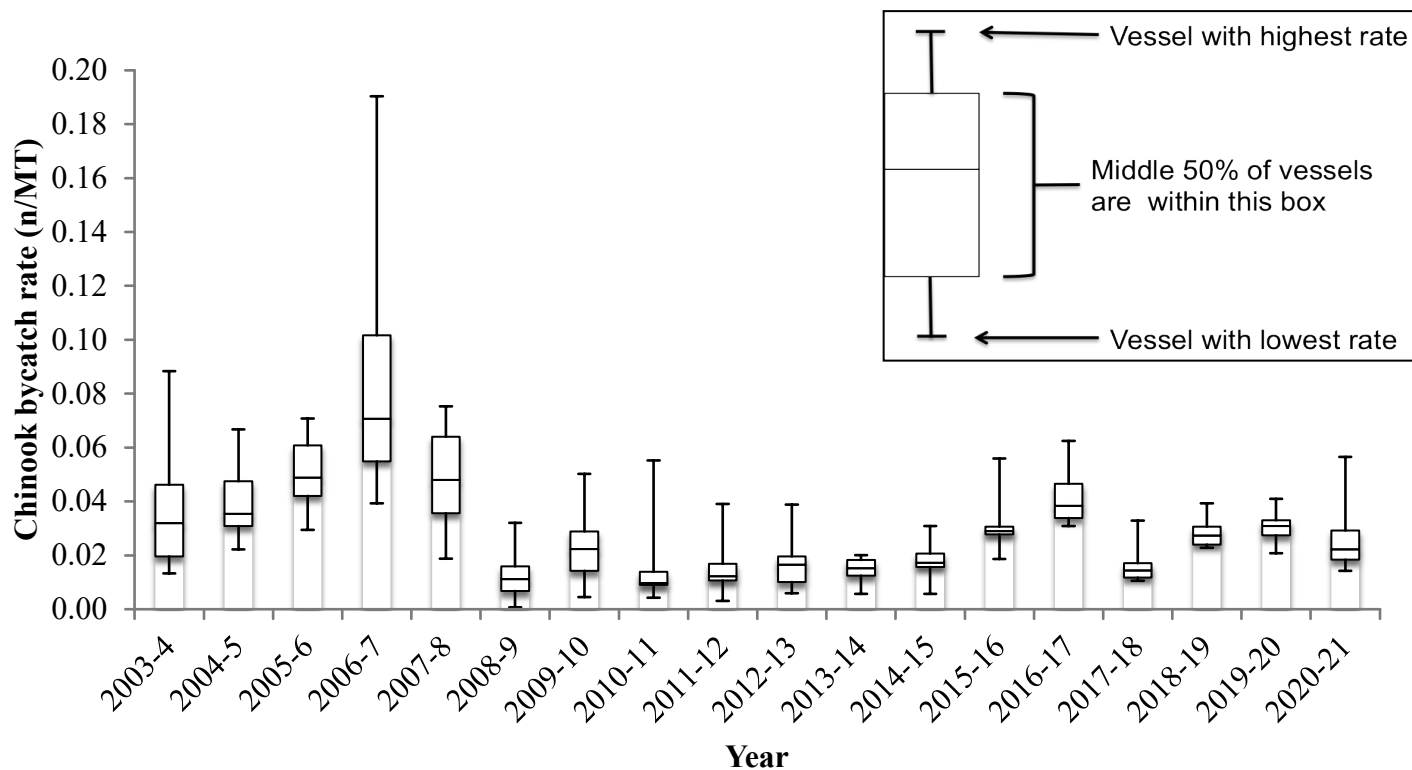
CHUM BYCATCH AVOIDANCE AREAS, CP SECTOR 2020



Week	7/30	8/6	8/13	8/20	8/27	9/3	9/10	9/17
Number of CPs excluded from BAAs	2	2	3	8	7	2	3	4



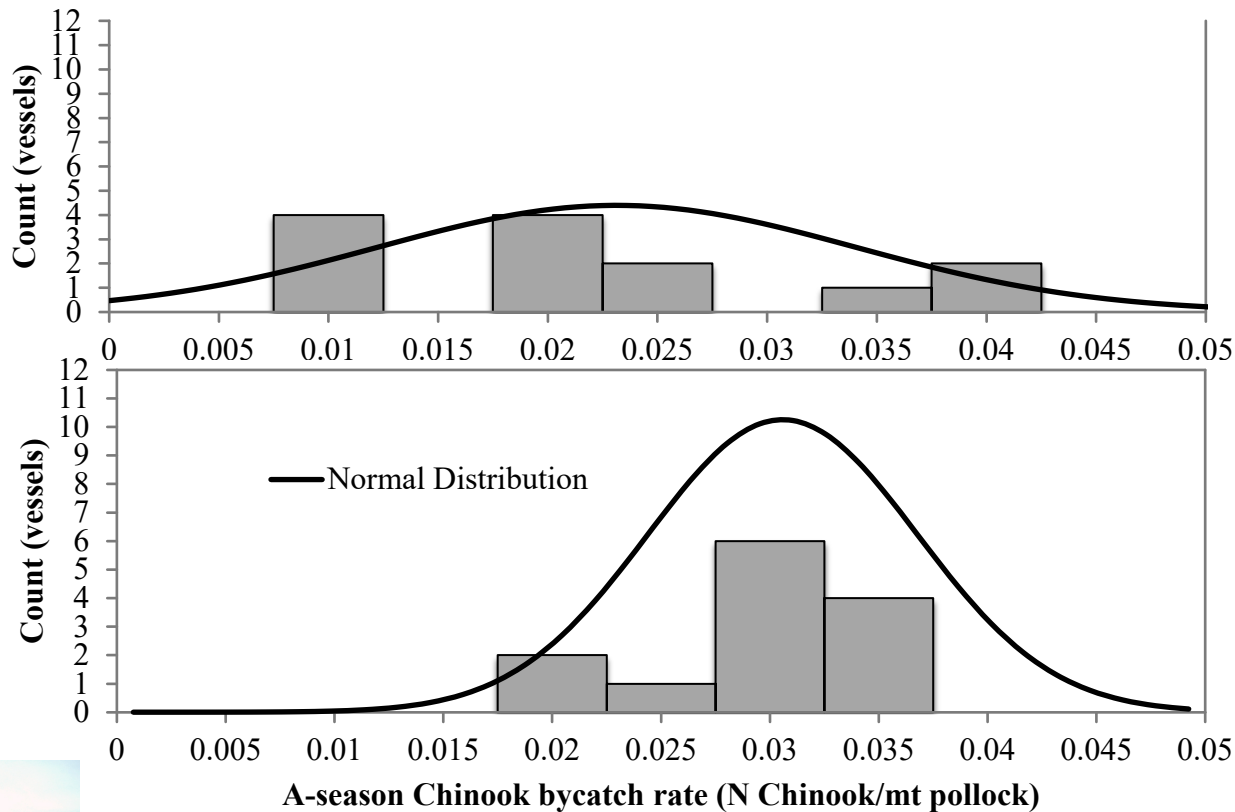
EFFECTS OF INCENTIVE PLAN AGREEMENT



CP Vessel Chinook bycatch rate distribution by year for 1 Sept-1 March.



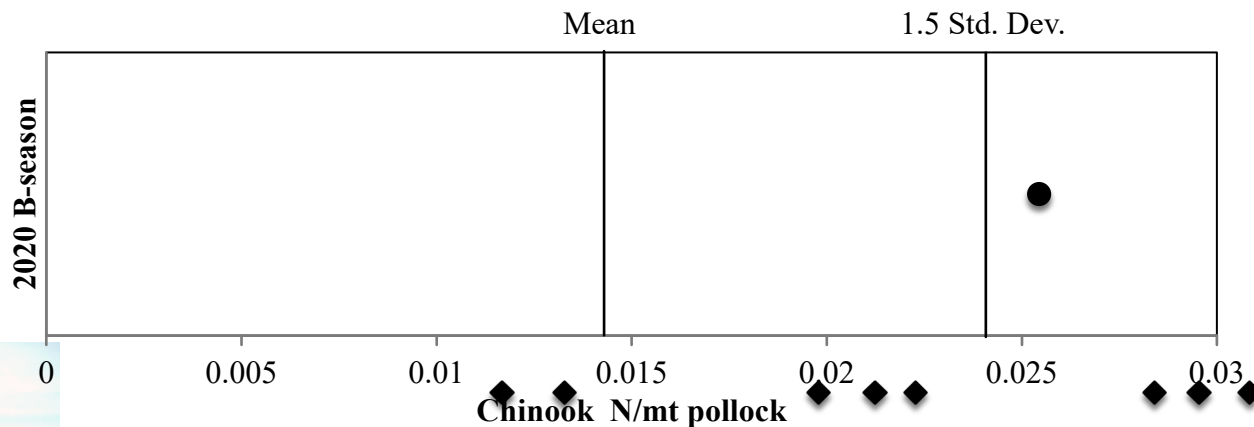
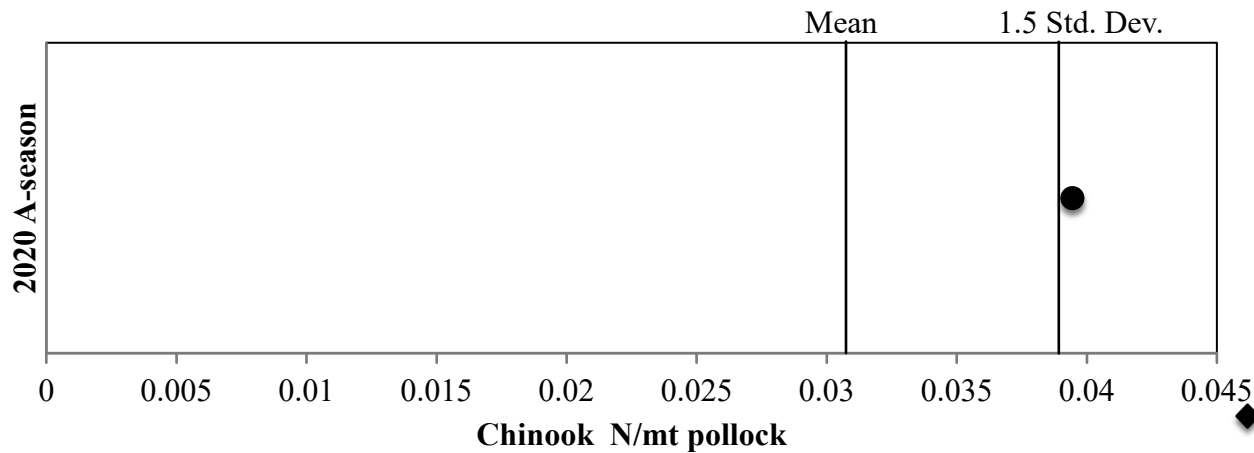
EFFECTS OF INCENTIVE PLAN AGREEMENT



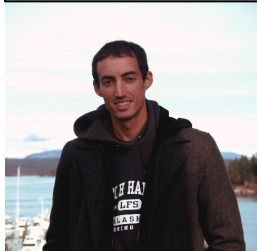
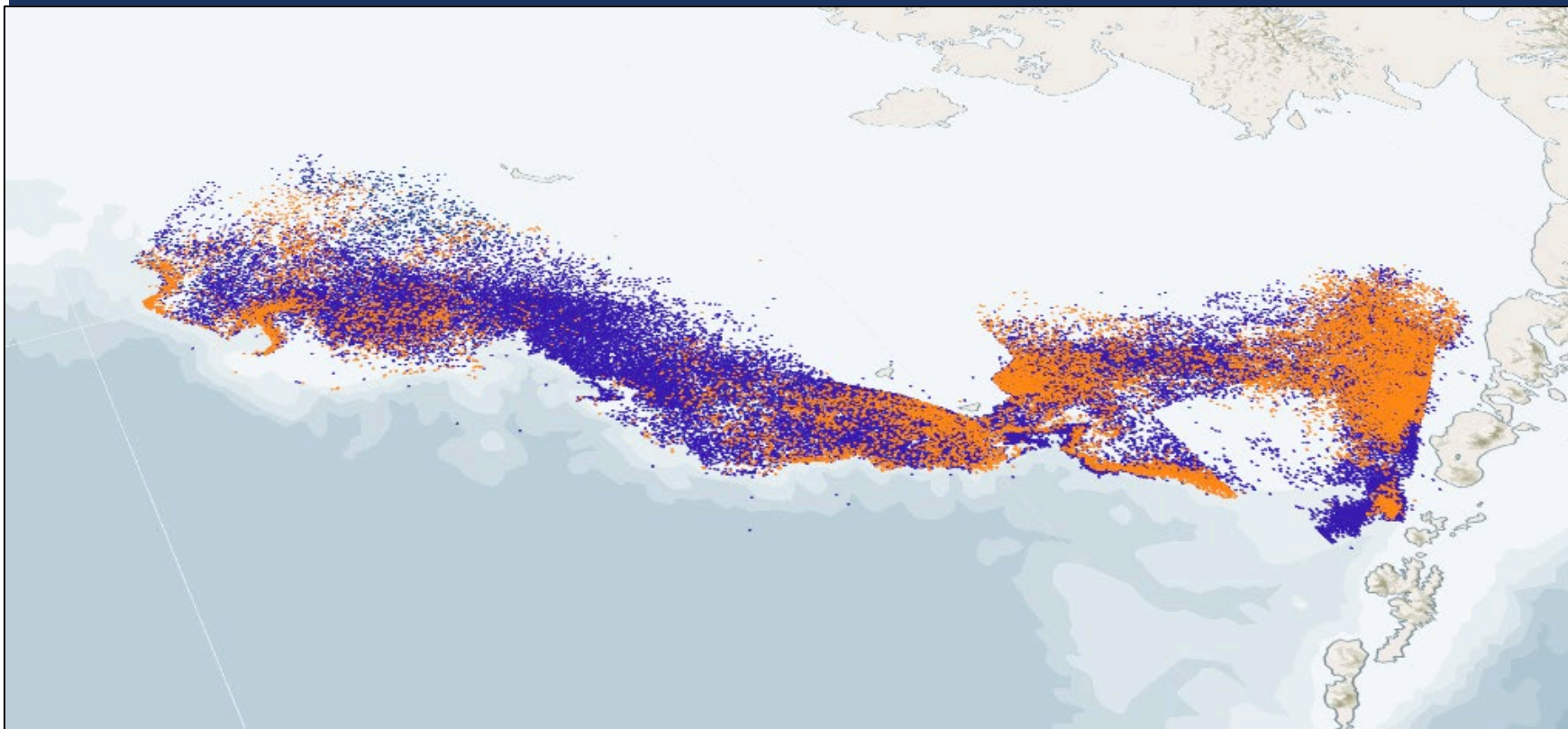
Upper panel: A-Season CP Vessel Chinook Bycatch Rate Frequency Distribution for 2010 with a variance pre-Amendment 91 of 0.0014 and Lower panel: Distribution for 2020 with variance equal to 0.0003.



EFFECTS OF INCENTIVE PLAN AGREEMENT



EFFECTS OF INCENTIVE PLAN AGREEMENT



Pollock CP trawl locations between September 1st and February 28th for the years 2000-2010 (blue), 2011-2020 (orange).



HERRING BYCATCH AND AMENDMENT 91

PCC Pollock Boat footprint between 2010 and July 2020.

The shaded polygons represents the trawl footprint of the Pollock Conservation Cooperative Vessels based on haul location data between 2010 and July 2020 broken down by A and B seasons. The footprint is defined as a 5 km radius from the haul location where the pollock CPUE > 0.

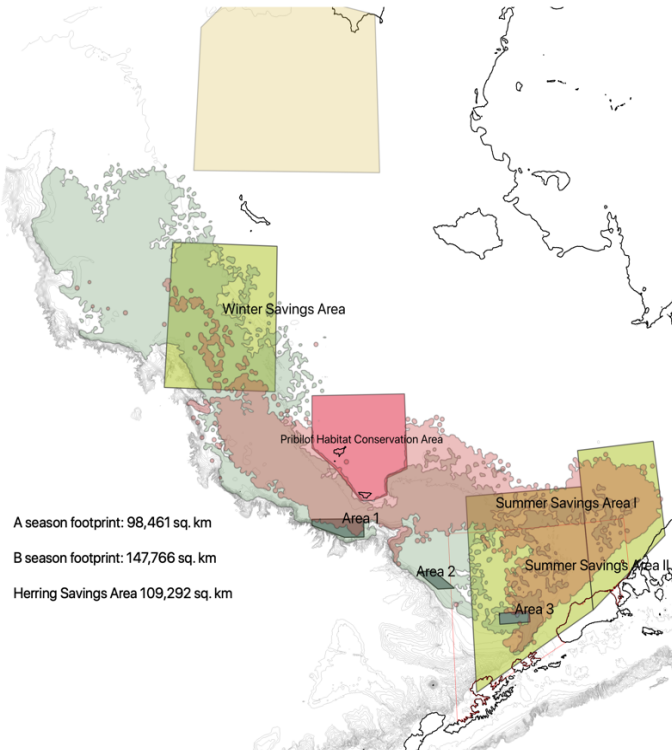
The three herring savings areas are shown for perspective along with the CVOA for shoreside vessels. Note that CDQ fishing is permitted inside the CVOA.

Data

PCC Hauls Footprint

- A season footprint
- B season footprint
- Spectacled Eider Wintering Area Unit
- Chinook Conservation Areas

0 100 200 km



A season footprint: 98,461 sq. km

B season footprint: 147,766 sq. km

Herring Savings Area 109,292 sq. km

Date Prepared: Aug 6, 2020
Prepared By: Sea State Inc
Author: Steve Manell



GEAR RESEARCH AND DEVELOPMENT

- All vessels continue to utilize salmon excluder device in accordance with Amendment 110 regulations
- Active excluder NOAA BREP project was delayed, field trials cancelled in 2020
- Most CP vessels have now invested in a live-feed camera system allowing them to view catch composition in real time helping mitigate lightning strike events



QUESTIONS

