



Report of the 97th Session of the IPHC Annual Meeting (AM097)

Meeting held electronically, 25-29 January 2021

Commissioners

Canada	United States of America
Paul Ryall	Glenn Merrill
Neil Davis	Robert Alverson
Peter DeGreef	Richard Yamada

Executive Director

David T. Wilson, Ph.D.

DISTRIBUTION:

Participants in the Session
Members of the Commission
IPHC Secretariat

BIBLIOGRAPHIC ENTRY

IPHC 2021. Report of the 97th Session of the IPHC Annual Meeting (AM097). Electronic meeting, 25-29 January 2021.
IPHC-2021-AM097-R, 50 pp.



The designations employed and the presentation of material in this publication and its lists do not imply the expression of any opinion whatsoever on the part of the International Pacific Halibut Commission (IPHC) concerning the legal or development status of any country, territory, city or area or of its authorities, or concerning the delimitation of its frontiers or boundaries.

This work is protected by copyright. Fair use of this material for scholarship, research, news reporting, criticism or commentary is permitted. Selected passages, tables or diagrams may be reproduced for such purposes provided acknowledgment of the source is included. Major extracts or the entire document may not be reproduced by any process without the written permission of the Executive Director, IPHC.

The IPHC has exercised due care and skill in the preparation and compilation of the information and data set out in this publication. Notwithstanding, the IPHC, its employees and advisers, assert all rights and immunities, and disclaim all liability, including liability for negligence, for any loss, damage, injury, expense or cost incurred by any person as a result of accessing, using or relying upon any of the information or data set out in this publication, to the maximum extent permitted by law including the International Organizations Immunities Act.

Contact details:

International Pacific Halibut Commission
2320 W. Commodore Way, Suite 300
Seattle, WA, 98199-1287, U.S.A.
Phone: +1 206 634 1838
Fax: +1 206 632 2983
Email: secretariat@iphc.int
Website: <https://www.iphc.int/>



ACRONYMS

AM	Annual Meeting
CB	Conference Board
COVID-19	Coronavirus Disease 2019 (a.k.a. SARS-CoV-2)
DFO	Fisheries and Ocean Canada
FCEY	Fishery Constant Exploitation Yield
FISS	Fishery-Independent Setline Survey
FY	Financial Year
GAAP	Generally Accepted Accounting Principles
IPHC	International Pacific Halibut Commission
MoU	Memorandum of Understanding
MP	Management Procedure
MSAB	Management Strategy Advisory Board
NPFMC	North Pacific Fishery Management Council
NOAA	National Oceanic and Atmospheric Administration
PAB	Processor Advisory Board
PFMC	Pacific Fishery Management Council
RAB	Research Advisory Board
SB	Spawning Biomass
SL	Size Limit
SRB	Scientific Review Board
SPR	Spawning Potential Ratio
TCEY	Total Constant Exploitation Yield

DEFINITIONS

A set of working definitions are provided in the IPHC Glossary of Terms and abbreviations:
<https://www.iphc.int/the-commission/glossary-of-terms-and-abbreviations>

HOW TO INTERPRET TERMINOLOGY CONTAINED IN THIS REPORT

This report has been written using the following terms and associated definitions so as to remove ambiguity surrounding how particular paragraphs should be interpreted.

Level 1: RECOMMENDED; RECOMMENDATION; ADOPTED (formal); **REQUESTED; ENDORSED** (informal): A conclusion for an action to be undertaken, by a Contracting Party, a subsidiary (advisory) body of the Commission and/or the IPHC Secretariat.

Level 2: AGREED: Any point of discussion from a meeting which the Commission considers to be an agreed course of action covered by its mandate, which has not already been dealt with under Level 1 above; a general point of agreement among delegations/participants of a meeting which does not need to be elevated in the Commission's reporting structure.

Level 3: NOTED/NOTING; CONSIDERED; URGED; ACKNOWLEDGED: General terms to be used for consistency. Any point of discussion from a meeting which the Commission considers to be important enough to record in a meeting report for future reference. Any other term may be used to highlight to the reader of an IPHC report, the importance of the relevant paragraph. Other terms may be used but will be considered for explanatory/informational purposes only and shall have no higher rating within the reporting terminology hierarchy than Level 3.



TABLE OF CONTENTS

REPORT OF THE 97TH SESSION OF THE IPHC ANNUAL MEETING (AM097) 1

TABLE OF CONTENTS 4

EXECUTIVE SUMMARY 6

1. OPENING OF THE SESSION 8

2. ADOPTION OF THE AGENDA AND ARRANGEMENTS FOR THE SESSION 8

3. IPHC PROCESS 8

 3.1 *Update on actions arising from the 96th Session of the IPHC Annual Meeting (AM096), 96th Session of the IPHC Interim Meeting (IM096), and 2020 Intersessional Decisions 8*

 3.2 *Report of the IPHC Secretariat (2020) 9*

 3.3 *2nd IPHC Performance Review (PRIPHC02): Implementation of recommendations 9*

4. STATE OF THE FISHERY (2020) 9

5. STOCK STATUS OF PACIFIC HALIBUT (2020) AND HARVEST DECISION TABLE (2021) 10

 5.1 *IPHC Fishery-Independent Setline Survey (FISS) (2020) 10*

 5.2 *Space-time modelling of survey data and FISS designs for 2021-23 11*

 5.3 *Stock Assessment: Data overview and stock assessment (2020), and harvest decision table (2021) 13*

 5.4 *Pacific halibut mortality projections using the IPHC mortality projection tool (2021) 16*

 5.5 *Size limit review 18*

6. IPHC SCIENCE AND RESEARCH 19

 6.1 *IPHC 5-year Biological & Ecosystem Science Research Plan (2017-21): update 19*

7. REPORT OF THE 21ST SESSION OF THE IPHC RESEARCH ADVISORY BOARD (RAB021) 19

8. REPORTS OF THE IPHC SCIENTIFIC REVIEW BOARD 19

9. MANAGEMENT STRATEGY EVALUATION 20

 9.1 *IPHC Management Strategy Evaluation: update 20*

 9.2 *Reports of the IPHC Management Strategy Advisory Board 20*

 9.3 *MSE Program of Work 21*

10. IPHC FISHERY REGULATIONS: PROPOSALS FOR THE 2020-21 PROCESS 21

 10.1 *IPHC Secretariat fishery regulation proposals 21*

 10.1.1 *IPHC Fishery Regulations: Mortality and Fishery Limits (Sect. 5) 21*

 10.1.2 *IPHC Fishery Regulations: Commercial fishing periods (Sect. 9) 21*

 10.1.3 *IPHC Fishery Regulations: minor amendments 22*

 10.2 *Contracting Party fishery regulation proposals 22*

 10.2.1 *IPHC Fishery Regulations: Charter management measures in IPHC Regulatory Areas 2C and 3A (Sect. 29) 22*

 10.2.2 *IPHC Fishery Regulations: Commercial fishing periods (Sect. 9) 22*

 10.3 *Other Stakeholder fishery regulation proposals 22*

 10.3.1 *Commercial Fishing Period (Sect. 9) 22*

 10.4 *Stakeholder statements 23*

11. CONTRACTING PARTY NATIONAL REPORTS 23

 11.1 *Canada 23*

 11.2 *United States of America 23*

12. PACIFIC HALIBUT FISHERY ECONOMICS UPDATE 23

13. REPORT OF THE 97TH SESSION OF THE IPHC FINANCE AND ADMINISTRATION COMMITTEE (FAC097) 23

 13.1 *Financial Statements for FY2020 23*

 13.2 *Annual independent auditor’s report (FY2020) 24*

 13.3 *FY2021 Budget – update 24*

 13.4 *Budget estimates: FY2022 (for approval); FY2023 and FY2024 (for information) 24*

 13.5 *IPHC Financial Regulations (2021) 24*



IPHC–2021–AM097–R

13.6	<i>IPHC Rules of Procedure (2021)</i>	24
14.	REPORT OF THE 91ST SESSION OF THE IPHC CONFERENCE BOARD (CB091)	25
15.	REPORT OF THE 26TH SESSION OF THE IPHC PROCESSOR ADVISORY BOARD (PAB026)	25
16.	OTHER BUSINESS	26
16.1	<i>IPHC meetings calendar (2021-23)</i>	26
16.2	<i>Election of a Chairperson and Vice-Chairperson for the next year</i>	26
17.	REVIEW OF THE DRAFT AND ADOPTION OF THE REPORT OF THE 97TH SESSION OF THE IPHC ANNUAL MEETING (AM097)	26
	APPENDIX I LIST OF PARTICIPANTS FOR THE 97TH SESSION OF THE IPHC ANNUAL MEETING (AM097)	27
	APPENDIX II AGENDA FOR THE 97TH SESSION OF THE IPHC ANNUAL MEETING (AM097)	35
	APPENDIX III LIST OF DOCUMENTS FOR THE 97TH SESSION OF THE IPHC ANNUAL MEETING (AM097)	37
	APPENDIX IV IPHC FISHERY REGULATIONS: MORTALITY AND FISHERY LIMITS (SECT. 5)	40
	APPENDIX V COMMERCIAL FISHING PERIODS (SECT. 9)	42
	APPENDIX VI SUPERVISION OF UNLOADING AND WEIGHING (SECT. 22)	43
	APPENDIX VII RECREATIONAL (SPORT) FISHING FOR PACIFIC HALIBUT—IPHC REGULATORY AREAS 2C, 3A, 3B, 4A, 4B, 4C, 4D, 4E	44
	APPENDIX VIII COMMERCIAL FISHING PERIODS (SECT. 9)	45
	APPENDIX IX FY2022 PROPOSED BUDGET	46
	APPENDIX X FY2023 INDICATIVE BUDGET	47
	APPENDIX XI FY2024 INDICATIVE BUDGET	48
	APPENDIX XII CONSOLIDATED SET OF RECOMMENDATIONS AND REQUESTS OF THE 97TH SESSION OF THE IPHC ANNUAL MEETING (AM097) (25-29 JANUARY 2021)	49



EXECUTIVE SUMMARY

The 97th Session of the International Pacific Halibut Commission (IPHC) Annual Meeting (AM097) was held virtually from the IPHC Headquarters in Seattle, WA, U.S.A., from 25-29 January 2021. A total of 29 (22 in 2020) participants (6 Commissioners: Members; 23 (16 in 2020) advisors/experts) attended the Session from the two (2) Contracting Parties, as well as 241 (200 in 2020) members of the public via the webcast. The meeting was opened by the Chairperson, Mr Paul Ryall (Canada) and the Vice-Chairperson, Mr Glenn Merrill (U.S.A.) who welcomed participants.

The following are a subset of the complete recommendations and requests for action from the AM097, which are provided at [Appendix XII](#).

IPHC PACIFIC HALIBUT FISHERY REGULATIONS 2021

IPHC Secretariat fishery regulation proposals

IPHC Fishery Regulations: Morality and Fishery Limits (Sect. 5)

([para. 72](#)) The Commission **NOTED** and **ADOPTED** fishery regulation proposal [IPHC-2021-AM097-PropA1](#), which provides the mortality and fishery limits framework for population at AM097 ([Appendix IV](#)).

([para. 73](#)) The Commission **ADOPTED** the distributed mortality limits for each Contracting Party, by IPHC Regulatory Area, ([Table 6](#)) and sector, as provided in [Appendix IV](#). [**Canada:** In favour=3, Against=0][**USA:** In favour=3, Against=0]

Table 6. Adopted TCEY mortality limits for 2021

Contracting Party IPHC Regulatory Area	Mortality limit (TCEY) (metric tonnes)	Mortality limit (TCEY) (mlbs)
Canada Total: 2B	3,175	7.00
USA: 2A	748	1.65
USA: 2C	2,631	5.80
USA: 3A	6,350	14.00
USA: 3B	1,415	3.12
USA: 4A	930	2.05
USA: 4B	635	1.40
USA: 4CDE	1,805	3.98
United States of America Total	14,515	32.00
Total (IPHC Convention Area)	17,690	39.00

IPHC Fishery Regulations: Commercial fishing periods (Sect. 9)

([para. 77](#)) The Commission **ADOPTED** fishing periods for 2021 as provided below, thereby superseding the relevant portions of Section 9 of the IPHC Pacific halibut fishery regulations ([Appendix V](#)) by specifying that commercial fishing for Pacific halibut in all IPHC Regulatory Areas may begin no earlier than 6 March and must cease on 7 December.

IPHC Fishery Regulations: minor amendments

([para. 78](#)) The Commission **NOTED** and **ADOPTED** fishery regulation proposal [IPHC-2021-AM097-PropA3](#), which proposed amendments to ensure IPHC Secretariat were formally regulated to allow them to sample Pacific halibut at the point of landing, with minor modification as identified during AM097 ([Appendix VI](#)).



Contracting Party fishery regulation proposals

IPHC Fishery Regulations: Charter management measures in IPHC Regulatory Areas 2C and 3A (Sect. 29)

([para. 79](#)) The Commission **NOTED** and **ADOPTED** fishery regulation proposal [IPHC-2021-AM097-PropB1](#), which proposed IPHC Regulation changes for charter recreational Pacific halibut fisheries in IPHC Regulatory Areas 2C and 3A ([Appendix VII](#)), in order to achieve the charter Pacific halibut allocation under the North Pacific Fisheries Management Council’s (NPFMC) Pacific halibut Catch Sharing Plan:

- a) IPHC Regulatory Area 2C – one-fish bag limit with size limit of less than or equal to 50 inches or greater than or equal to 72 inches;
- b) IPHC Regulatory Area 3A – two-fish bag limit with one fish of any size and a second fish less than or equal to 32 inches, Wednesdays closed to retention of Pacific halibut, one trip per vessel and one trip per permit per day (no annual limit). See [IPHC-2021-AM097-PropB1](#) for additional detail.

IPHC Fishery Regulations: Commercial fishing periods (Sect. 9)

([para. 83](#)) The Commission **ADOPTED** fishery regulation changes contained within [IPHC-2021-AM097-INF05](#), which revises the derby season structure from openings Monday through Wednesday, to openings Tuesday through Thursday ([Appendix VIII](#)).

RECOMMENDATIONS

Commercial Fishing Period

AM097–Rec.01 ([para. 87](#)) The Commission **RECOMMENDED** that further consultations between Contracting Parties and fishery stakeholders on the administrative and policy implications of a year round fishery would support the decision process for the 98th Session of the IPHC Annual Meeting (AM098; January 2022) on potential further extensions of the direct commercial fishing period.

REQUESTS

IPHC Financial Regulations (2021)

AM097–Req.05 ([para. 104](#)) The Commission **ENDORSED** and **ADOPTED** the IPHC Financial Regulations (2021) as provided in paper [IPHC-2021-AM097-INF04 Rev_3](#) by consensus, and **REQUESTED** that the IPHC Secretariat finalise and publish them accordingly.

AM097–Req.06 ([para. 105](#)) The Commission **REQUESTED** that the IPHC Secretariat will undertake an inter-sessional review and recommend further improvements to the Financial Regulations of the Commission, including the basis of accounting to better align with GAAP standards while maintaining regulatory compliance.

IPHC Rules of Procedure (2021)

AM097–Req.07 ([para. 106](#)) The Commission **ADOPTED** the IPHC Rules of Procedure (2021), as provided in [IPHC-2021-FAC097-09](#) by consensus, and **REQUESTED** that the IPHC Secretariat finalise and publish them accordingly.

AM097–Req.08 ([para. 107](#)) The Commission **REQUESTED** that the IPHC Secretariat undertake an inter-sessional review and recommend further improvements to the IPHC Rules of Procedure to the Commission, noting the CB’s recommendation (to change when Chairs are elected in their rule), PAB noting the conflicting text in the Rules, and roles of the Commissions Secretariat.



1. OPENING OF THE SESSION

1. The 97th Session of the International Pacific Halibut Commission (IPHC) Annual Meeting (AM097) was held virtually from the IPHC Headquarters in Seattle, WA, U.S.A., from 25-29 January 2021. A total of 29 (22 in 2020) participants (6 Commissioners: Members; 23 (16 in 2020) advisors/experts) attended the Session from the two (2) Contracting Parties, as well as 241 (200 in 2020) members of the public via the webcast. The list of participants is provided at [Appendix I](#). The meeting was opened by the Chairperson, Mr Paul Ryall (Canada) and the Vice-Chairperson, Mr Glenn Merrill (U.S.A.) who welcomed participants.

2. ADOPTION OF THE AGENDA AND ARRANGEMENTS FOR THE SESSION

2. The Commission **ADOPTED** the Agenda as provided at [Appendix II](#). The documents provided to the [AM097](#) are listed in [Appendix III](#).

3. IPHC PROCESS

3.1 *Update on actions arising from the 96th Session of the IPHC Annual Meeting (AM096), 96th Session of the IPHC Interim Meeting (IM096), and 2020 Intersessional Decisions*

3. The Commission **NOTED** paper [IPHC-2021-AM097-03](#), which provided the Commission with an opportunity to consider the progress made during the inter-sessional period, in relation to the direct requests for action by the Commission during the 96th Session of the IPHC Annual Meeting (AM096), 96th Session of the IPHC Interim Meeting (IM096) and 2020 Intersessional decisions.
4. The Commission **AGREED** to consider and revise as necessary, the actions arising from the AM096, IM096, and 2020 Intersessional decisions, and for these to be combined with any new actions arising from the AM097.
5. The Commission **NOTED** that there were several agreements made at AM096, which given the current reporting terminology in use by the Commission, included language similar to recommendations or requests for action, and thus, discussed if they should be reported on at the Interim and Annual Meetings each year. It was recalled by the IPHC Secretariat, that to ensure report terminology is consistent and readily interpretable, specific terms, definitions and clear actions are defined in the [preamble section](#) of the report, so as to remove ambiguity surrounding how particular paragraphs should be interpreted and actioned.
6. The Commission **RECALLED** the following three (3) paragraphs from [IPHC-2020-AM096-R](#):
 - (para. 94) *“The Commission AGREED to continue the development of a workplan to explore methods for improvement of monitoring requirements in directed and non-directed fisheries.”*
 - (para. 95) *“The Commission AGREED to continue work on evaluating and redefining TCEY to include the U26 component of discard mortalities, including non-directed commercial fisheries, as steps towards more comprehensive and responsible management of the resource, in coordination with the IPHC Secretariat and Contracting Parties. The intent is that each Contracting Party to the Treaty would be responsible for counting its U26 mortalities against its collective TCEY.”*
 - (para. 96) *“The Commission AGREED to account for some of the impact of U26 non-directed discard mortality from US IPHC Regulatory Areas on available harvest in IPHC Regulatory Area 2B. The estimated lost yield is calculated following the method described in paper IPHC-2019-IM095-12, considering a rolling three-year average of U26 non-directed discard mortality. The accounting is calculated as one half of the estimated lost yield and is applied as an adjustment to the interim management procedure adopted at AM095 and described in paragraph 4(c). This approach will apply until 2022.”*



3.2 Report of the IPHC Secretariat (2020)

7. The Commission **NOTED** paper [IPHC-2021-AM097-04](#) which provided the Commission with an update on activities of the IPHC Secretariat in 2020 not detailed in other papers before the Commission.

3.3 2nd IPHC Performance Review (PRIPHC02): Implementation of recommendations

8. The Commission **NOTED** paper [IPHC-2021-AM097-13](#) which provided the Commission with an update on the implementation of the recommendations arising from the 2nd Performance Review of the IPHC (PRIPHC02).
9. The Commission **NOTED** PRIPHC02-Rec.09 (para. 73) where the IPHC Secretariat, in consultation with the Commission, will develop minimum data collection standards for Pacific halibut by scientific observer programs. The Commission **URGED** progress either through domestic management agencies or with the IPHC Secretariat, in consultation with the Commission.

4. STATE OF THE FISHERY (2020)

10. The Commission **NOTED** paper [IPHC-2021-AM097-05 Rev 1](#) which provided an overview of the key fishery statistics regarding Pacific halibut removals from fisheries catching Pacific halibut during 2020, including the status of landings compared to fishery limits implemented by the Contracting Parties of the Commission.
11. The Commission **NOTED** the following issues in regard to mortality overages (for commercial sectors) and mortality overages for ‘projected mortalities’ in the following Contracting Party sectors/fisheries in 2020 ([Table 1](#)).

Table 1. Fishery sectors with mortality overages in 2020. ^ denotes overages of ‘Projection mortality estimates’

Sector	IPHC Regulatory Area	Mortality limit/ projection [^]		2020 Mortality		Percent
		t	Mlb	t	Mlb	
Directed commercial	2B – discard mortality	59	0.13	75	0.17	127
	2A – discard mortality	14	0.03	15	0.03	110
Recreational [^]	2A – California	18	0.04	29	0.06	164
	2C – Unguided	522	1.15	526	1.16	101
	3A – Unguided	753	1.66	771	1.70	102
	3B	0	0.00	5	0.01	n/a
	4A	5	0.01	7	0.02	162
Subsistence [^]	2A	15	0.03	19	0.04	129
	4A	5	0.01	6	0.01	132
	4B	0	0.00	<1	<0.01	n/a
Non-directed commercial O26 discard mortality [^]	2C	32	0.07	42	0.09	133
	4A	100	0.22	108	0.24	109

12. The Commission **NOTED** that the non-directed commercial fishery discard mortality projections were greater than the most recent 3-year average projections in some IPHC Regulatory Areas, but that the actual discard mortality was down 23% from 2019.



IPHC–2021–AM097–R

13. **NOTING** the uncertainty associated with various estimates of removals, as listed below, the Commission again **RECALLED** its previous recommendation that each Contracting Party address these uncertainties in a report to the Commission at its next Session (noting that no report of this nature was provided at AM096 or AM097). The intention is to provide greater detail on how each removal category is quantified and verified:

Canada

- a) self-reporting of lodges for recreational estimates;
- b) subsistence estimates;

United States of America

- a) self-reporting of lodges for recreational estimates (in Alaska);
 - b) subsistence estimates (in Alaska, U.S.A.);
 - c) no monitoring or observer coverage (vessels less than 40 feet in length);
 - d) estimates for the Pacific halibut commercial fishery discard mortality (in Alaska), due to the observer coverage rate (IPHC Secretariat coverage rate calculated based on weight and NOAA Fisheries observer coverage rate calculated on fishing trip);
 - e) the estimates for Pacific halibut non-directed commercial fishery discard mortality in the U.S.A, for the same reasons identified in the previous point.
14. The Commission **NOTED** the definition of terms or categories under which these mortality are reported and that these definitions are listed in [IPHC-2021-AM097-05 Rev 1](#).
15. The Commission **NOTED** that 2020 mortality projections for recreational unguided removals in the U.S.A. (Alaska) were based on harvest through 2018 due to a reporting lag.
16. The Commission **NOTED** the use of pots is primarily responsible for incidental catches and retention of Pacific halibut, and not typically used for targeting Pacific halibut when fishing.

5. STOCK STATUS OF PACIFIC HALIBUT (2020) AND HARVEST DECISION TABLE (2021)

5.1 IPHC Fishery-Independent Setline Survey (FISS) (2020)

17. The Commission **NOTED** paper [IPHC-2021-AM097-06](#) which provided an overview of the IPHC's FISS design and implementation in 2020.
18. The Commission **NOTED** that in 2020, the IPHC Secretariat successfully implemented the FISS by applying a range of COVID-19 mitigation measures, including but not limited to:
- a) Reduced footprint ([Fig. 4 in IPHC-2021-AM097-06](#));
 - b) No external special projects (tertiary) and limited IPHC special projects;
 - c) Pre-deployment COVID-19 testing, requiring negative results;
 - d) Direct travel to the assigned vessel following strict social distancing and masking protocols
 - e) Pre- and post- deployment quarantine;
 - f) Secretariat remained within country;
 - g) Secretariat, Captain and crew numbers and changes restricted;
 - h) Secretariat and crew screened upon arrival at the vessel;
 - i) Maintained strict cleaning and social distancing protocols;



- j) Should a crewmember or Secretariat have demonstrated or tested positive for COVID-19, the vessel would become the strict quarantine site with rigorous contact tracing reviewed.

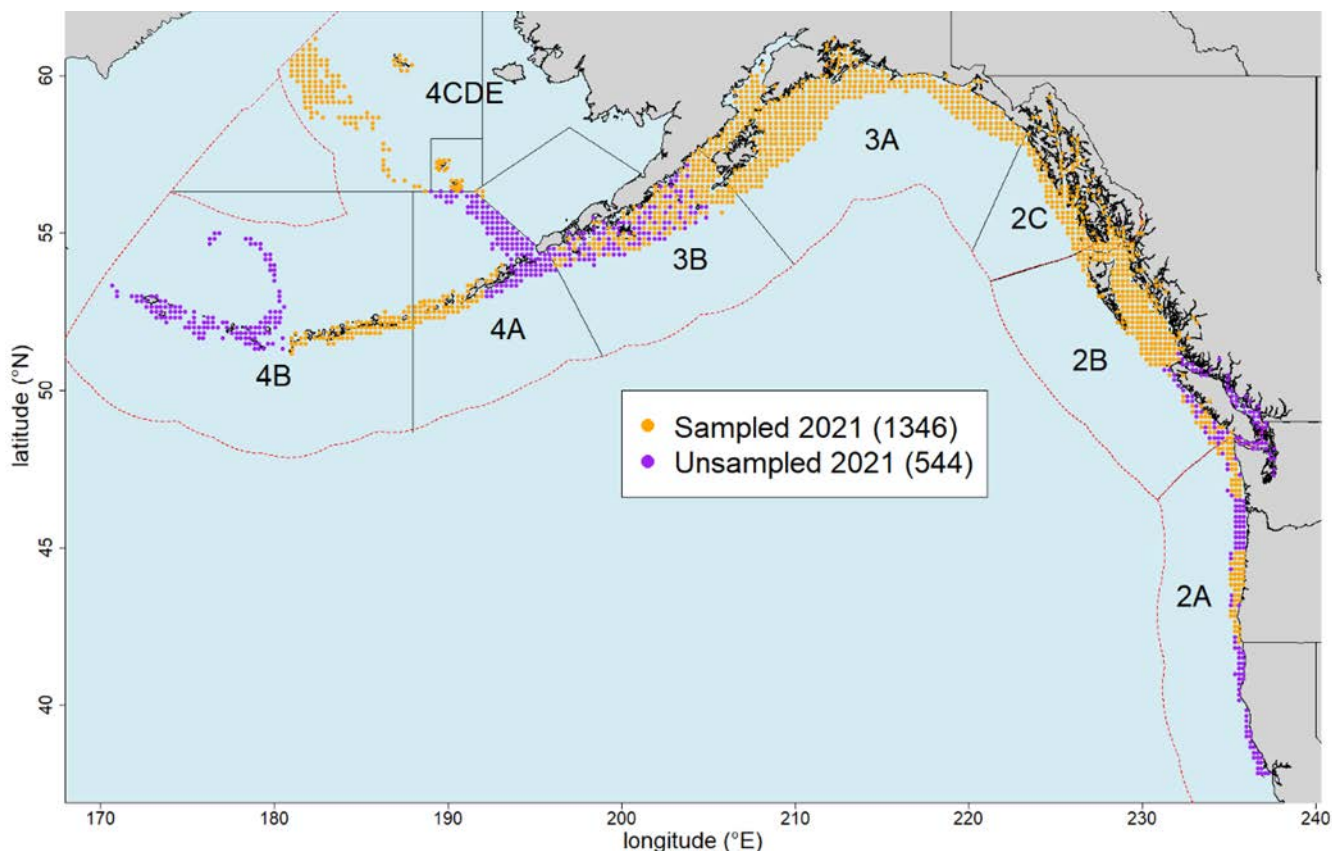
19. The Commission **NOTED** and congratulated the Secretariat on its successful completion of the 2020 FISS and the data it was able to obtain given the new and changing challenges in the face of the evolving worldwide pandemic (COVID-19).

5.2 Space-time modelling of survey data and FISS designs for 2021-23

20. The Commission **NOTED** paper [IPHC-2021-AM097-07](#) which provided results of space-time modelling of survey data in 2020 and presents FISS designs for 2021-23.

21. The Commission **RECALLED** the recommendation arising from the 9th Special Session of the IPHC (SS09):

[\(IPHC-2020-SS09-R, para. 9\)](#): “The Commission **RECOMMENDED** that the IPHC Secretariat proceed with an ‘optimised’ version of the ‘minimum 2021 FISS design’, involving adding an additional ~398 stations within the areas covered by the ‘minimum 2021 FISS design’ and where feasible, adding additional skates on each station ([Fig. 2](#)). The Commission reserved the right to make ad-hoc adjustments to the 2021 FISS at the 97th Session of the IPHC Annual Meeting (AM097), based on updated information to be provided by the IPHC Secretariat on IPHC Regulatory Areas 4B and 2A.”



“**Figure 2.** Optimised ‘minimum 2021 FISS design’ (orange circles) based on randomised sampling in 2B-3B, and a subarea design elsewhere. Purple circles are not planned for sampling in 2021.”

22. The Commission **RECALLED** that the priority of a rationalised FISS sampling design is to maintain or enhance data quality (precision and bias) by establishing minimum sampling requirements in terms of station count, station distribution and skates per station. Potential considerations that could add to or modify the design are logistics and cost (secondary design layer), and FISS removals (impact on the stock), data collection assistance for other agencies, and IPHC policies (tertiary design layer). These priorities are outlined in [Table 2](#).



Table 2. Prioritization of FISS objectives and corresponding design layers.

Priority	Objective	Design Layer
Primary	Sample Pacific halibut for stock assessment and stock distribution estimation.	Minimum sampling requirements in terms of: <ul style="list-style-type: none"> • Station distribution; • Station count; • Skates per station.
Secondary	Long-term* revenue neutrality.	Logistics and cost: operational feasibility and cost/revenue neutrality.
Tertiary	Minimize removals, and assist others where feasible on a cost-recovery basis.	Removals: minimize impact on the stock while meeting primary priority; Assist: assist others to collect data on a cost-recovery basis; IPHC policies: ad-hoc decisions of the Commission regarding the FISS design.

*The IPHC Secretariat currently interprets long-term to mean a 15 year average.

23. The Commission **NOTED** that while data from the NMFS sablefish longline survey were previously used to help index Pacific halibut in deeper waters, the use of these data was discontinued once the FISS was expanded into those deeper waters.
24. The Commission **NOTED** that the snap vs fixed gear comparison study undertaken in IPHC Regulatory Areas 2B and 2C (in 2020 and 2019 respectively) and a further comparison for IPHC Regulatory Area 3A in 2021, provide information on differences in catch rates between the gear types in a range of geographic areas and Pacific halibut habitats.
25. The Commission **NOTED** that the Secondary Priority in [Table 2](#) of long-term revenue neutrality implies that the FISS can be revenue positive or revenue negative in any given year of operation, but will be revenue neutral on average.
26. The Commission **NOTED** the updated information presented by the IPHC Secretariat on IPHC Regulatory Areas 4B and 2A FISS design, costs and estimated revenues. No further amendments to the 2021 FISS design approved at the [9th Special Session of the Commission \(SS09\)](#) were made.
27. The Commission **REQUESTED** that the IPHC Secretariat coordinate with Contracting Parties to develop a Memorandum of Understanding (MoU) to promote data sharing among the IPHC Secretariat and Contracting Parties at no additional cost to the Contracting Parties.



5.3 Stock Assessment: Data overview and stock assessment (2020), and harvest decision table (2021)

28. The Commission **NOTED** paper [IPHC-2021-AM097-08](#), which provided the Commission with a summary of data, stock assessment, and harvest decision table at the end of 2020.
29. The Commission **NOTED** that the 2020 stock assessment represented an update of the full assessment conducted in 2019, including updated time-series for all data components as well as new sex-ratio at age information from the IPHC Regulatory Area 3A recreational fishery and the 2019 directed commercial fishery.
30. The Commission **NOTED** that the amount of biological data collected were similar to previous years' levels in spite of the COVID-19 pandemic, and **COMMENDED** the IPHC Secretariat on their efforts to rapidly adapt to the changing environment, for quickly implementing and updating protocols and effectively meeting these targets.
31. The Commission **NOTED** that both modelled FISS trends and commercial logbook records indicated little change at the coastwide level from 2019 to 2020.
32. The Commission **NOTED** that modelled survey (including FISS and other sources) data indicated an increase WPUE from 2019 to 2020 in the stock distribution in Biological Region 3 (and especially in IPHC Regulatory Area 3A) and a decrease in Biological Region 2 (including both IPHC Regulatory Areas 2B and 2C). This change in stock distribution resulted in a corresponding change in the 2021 TCEY distribution.
33. The Commission **NOTED** that evidence for increased recruitment levels in 2011 and 2012 (relative to weak years from 2006-10) was present in all data sources and propagated into stock projections. However, 2011 and 2012 year class strengths remain uncertain with differences among the results from the four individual stock assessment models comprising the ensemble.
34. The Commission **NOTED** that the next FISS years may begin to provide indications of recruitment levels in 2014. This recruitment year is of interest as the first year to be affected by the Pacific Ocean marine heatwave event colloquially referred to as “the Blob”.
35. The Commission **NOTED** that model results remain highly consistent with those of recent stock assessments. The phase plot for Pacific halibut shows that the relative spawning biomass decreased as fishing intensity increased through 2010, then increased as the fishing intensity decreased through 2016, and has been relatively stable since then.
36. The Commission **NOTED** the following scientific advice from the IPHC Secretariat:
- “Sources of mortality: In 2020, total Pacific halibut mortality due to fishing was down to 35.50 million pounds (16,103 t) from 39.87 million pounds (18,086 t) in 2019. Of that total, 84% comprised the retained catch, up from 81% in 2019.”*
 - “Stock status (spawning biomass): Current (beginning of 2021) female spawning biomass is estimated to be 192 million pounds (87,050 t), which corresponds to a 41% chance of being below the IPHC trigger reference point of $SB_{30\%}$, and less than a 1% chance of being below the IPHC limit reference point of $SB_{20\%}$. Relative female spawning biomass at the beginning of 2021 was estimated to be at 33% of the unfished state, with a 41% chance of being below the IPHC trigger reference point of $SB_{30\%}$, and less than a 1% chance of being below the IPHC limit reference point of $SB_{20\%}$. Therefore, the stock is considered to be ‘not overfished’ ($SB_{2021} > SB_{20\%}$). Projections indicate that mortality consistent with the interim management procedure reference fishing intensity ($F_{43\%}$) is likely to result in further declining biomass levels in the near future.”*
 - “Fishing intensity: The 2020 mortality corresponded to a point estimate of $SPR = 48\%$; there is a 38% chance that fishing intensity exceeded the IPHC’s current reference level of 43%. The*



Commission does not currently have a coastwide fishing intensity limit reference point. However, given that the stock is above the spawning biomass limit reference point, the stock is by default classified as ‘not subject to overfishing’.”

- d) “**Stock distribution:** *The proportion of the coastwide stock represented by Biological Region 3 has been decreasing since 2004, and increasing in Biological Regions 2 and 4. However, there was an increase in Biological Region 3 in 2020 and a decrease in Biological Region 2. Biological Region 4 is near the historical high estimated for 2019, and has shown an increasing trend since the early 1990s.*”

37. The Commission **NOTED** the following outlook for the stock provided by the IPHC Secretariat:

“**Outlook.** *The stock is projected to decrease with at least a 51% chance over the period from 2021-23 for all TCEYs greater than the “3-year surplus” of 24.4 million pounds (~11,068 t), corresponding to a projected SPR of 58% (credible interval 39-76%, [Table 3](#), [Fig. 1](#)). At the status quo TCEY (36.6 million lb, (~16,600 t), the probability of spawning biomass decline is 62% and 61% for one and three years, respectively. At the reference level (a projected SPR of 43%) the probability of spawning biomass declining to 2022 is 65%, decreasing to 63% in three years, as the 2011 and 2012 cohorts mature. The one-year risk of the stock dropping below $SB_{30\%}$ ranges from 35% (at the 3-year surplus level) to 41% at the reference TCEY. Over three years these probabilities range from 29% to 44% depending on the level of mortality.*”

38. The Commission **NOTED** that stock projections were conducted using the integrated results from the stock assessment ensemble, summaries of the 2020 mortality, and the current interim management procedure, including agreements for IPHC Regulatory Area 2A and 2B. The harvest decision table ([Table 3](#)) provides a comparison of the relative risk (in times out of 100), using stock and fishery metrics (rows), against a range of alternative harvest levels for 2021-23 (columns).

39. The Commission **NOTED** that the harvest alternatives (columns) provided in the harvest decision table include several extreme levels of mortality (set aside in the left and right sections of the table) intended to provide for evaluation of stock dynamics: i) No fishing mortality, provided to evaluate the stock trend due solely to population; ii) The level of mortality associated with exactly a 50% chance of further stock decline over three years (“3-year surplus”); and iii) A 60 million pound (~27,200 t) 2021 TCEY. A finer grid of alternative TCEY values, corresponding to estimated SPR values from 46-40% (in 1% increments) for management evaluation.



Table 3. Harvest decision table for 2021 mortality limits. Columns correspond to yield alternatives and rows to risk metrics. Values in the table represent the probability, in “times out of 100” (or percent chance) of a particular risk.

		2021 Alternative		3-Year Surplus	Status quo			Reference $F_{43\%}$					
		Total mortality (M lb)	0.0	25.7	36.8	37.9	39.1	40.3	41.5	42.9	44.1	61.3	
		TCEY (M lb)	0.0	24.4	35.5	36.6	37.8	39.0	40.3	41.6	42.8	60.0	
		2021 fishing intensity	$F_{100\%}$	$F_{58\%}$	$F_{46\%}$	$F_{45\%}$	$F_{44\%}$	$F_{43\%}$	$F_{42\%}$	$F_{41\%}$	$F_{40\%}$	$F_{30\%}$	
		Fishing intensity interval	-	39-76%	29-65%	29-64%	28-63%	27-62%	26-61%	26-60%	25-59%	18-49%	
Stock Trend (spawning biomass)	in 2022	is less than 2021	<1	42	61	62	64	65	66	67	69	82	a
		is 5% less than 2021	<1	7	32	34	36	39	41	44	46	66	b
	in 2023	is less than 2021	<1	51	62	63	64	65	66	67	69	81	c
		is 5% less than 2021	<1	32	53	54	55	56	57	59	59	74	d
	in 2024	is less than 2021	<1	50	60	61	62	63	64	66	67	80	e
		is 5% less than 2021	<1	40	55	56	57	57	58	59	60	74	f
Stock Status (Spawning biomass)	in 2022	is less than 30%	29	35	39	40	40	41	41	42	42	47	g
		is less than 20%	<1	<1	<1	<1	1	1	1	1	1	4	h
	in 2023	is less than 30%	23	32	39	40	40	41	42	43	43	49	i
		is less than 20%	<1	<1	2	2	3	3	4	5	5	19	j
	in 2024	is less than 30%	12	29	38	39	40	41	42	43	44	50	k
		is less than 20%	<1	<1	4	5	6	8	9	10	12	25	l
Fishery Trend (TCEY)	in 2022	is less than 2021	0	17	48	49	50	50	50	51	51	77	m
		is 10% less than 2021	0	6	41	44	46	48	49	50	50	63	n
	in 2023	is less than 2021	0	21	49	50	50	50	50	51	51	75	o
		is 10% less than 2021	0	11	45	47	48	49	50	50	50	64	p
	in 2024	is less than 2021	0	23	49	50	50	50	50	51	51	74	q
		is 10% less than 2021	0	13	47	48	49	49	50	50	50	64	r
Fishery Status (Fishing intensity)	in 2021	is above $F_{43\%}$	0	15	48	49	50	50	50	51	51	78	s

Terms: *Constant Exploitation Yield (CEY):* A specific concept from the IPHC's interim management procedure: the Total CEY (TCEY) is the current basis for Commission mortality limits. TCEY includes all sources and sizes of mortality, except discard mortality in non-directed fisheries less than 26 inches in length (66cm; U26). The Fishery CEY (FCEY) is the amount of yield for directed Pacific halibut fisheries as defined by IPHC Regulatory Area-specific catch agreements, where applicable. *Spawning Potential Ratio (SPR):* A commonly used metric of fishing intensity. SPR is the ratio of the equilibrium spawning biomass per recruit given some level of fishing and the equilibrium spawning biomass per recruit in the absence of fishing. Sometimes referred to as SBR, relative Spawning Biomass per Recruit.

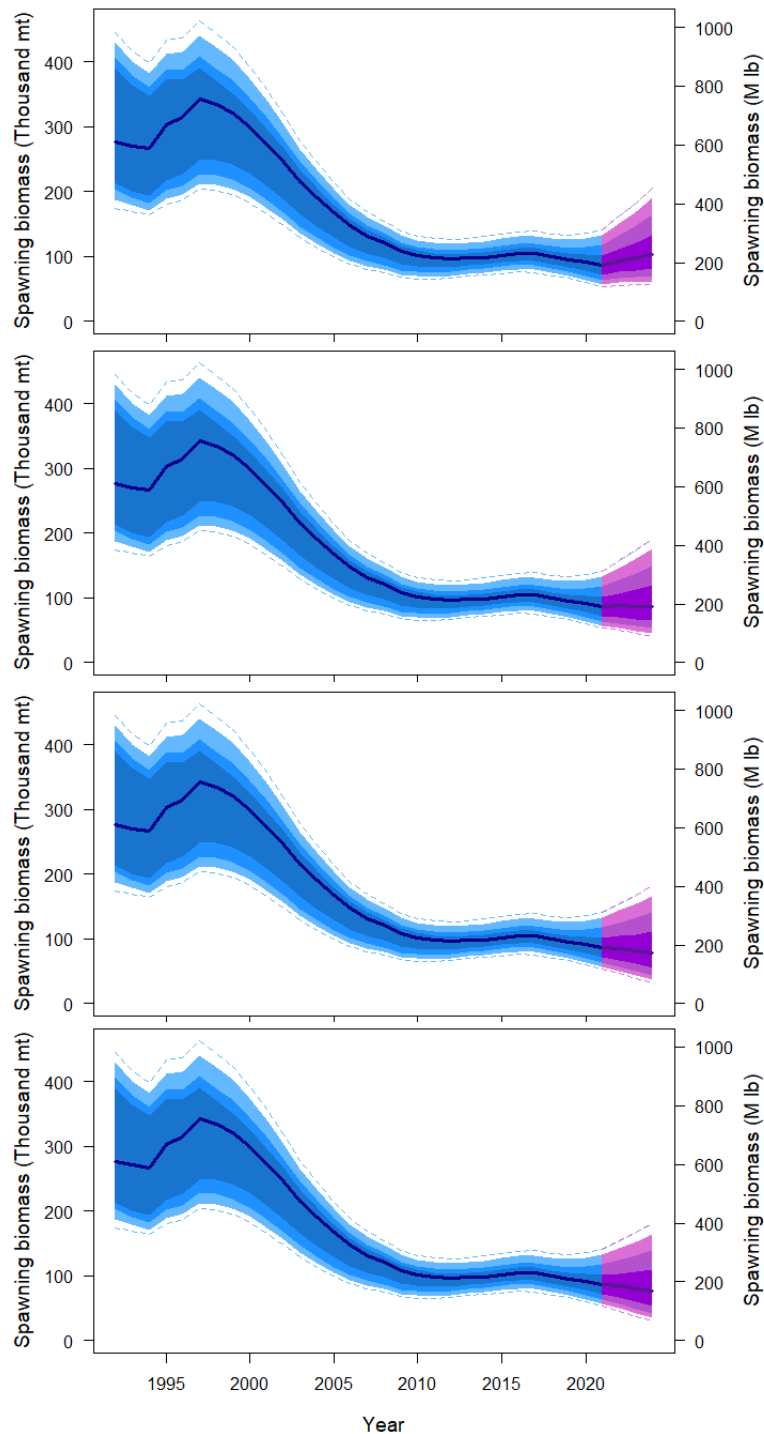


Figure 1. Three-year projections of stock trend under alternative levels of mortality: no fishing mortality (upper panel), the 3-year surplus (a TCEY of 24.4 million pounds, ~11,068 t; second panel), the status quo TCEY from 2020 of 36.6 million pounds, 16,600 t; third panel), and the TCEY projected for the IPHC's interim management procedure (39.0 million pounds, 17,690 t; lower panel).

5.4 Pacific halibut mortality projections using the IPHC mortality projection tool (2021)

40. The Commission **NOTED** paper [IPHC-2021-AM097-INF02](#) which provided an updated description of the IPHC's web-based mortality projection tool (<https://www.iphc.int/data/projection-tool>) for setting mortality limits in 2021 (and 2022). This tool provides all user groups the ability to create alternative projection tables as necessary for discussion and decision-making.



41. The Commission **RECALLED** that the interim management procedure, as described in paragraph 97 of [IPHC-2020-AM096-R](#), uses the O32 modelled stock distribution and relative harvest rates (1.0 for IPHC Regulatory Areas 2A-3A and 0.75 for IPHC Regulatory Areas 3B-4CDE), and the reference level of fishing intensity ($F_{43\%}$) to generate the starting point for mortality projections. This starting point is then modified to: 1) set the TCEY for IPHC Regulatory Area 2A to a value of 1.65 million pounds, and 2) allocate a percentage of the coastwide TCEY to IPHC Regulatory Area 2B based on IPHC Regulatory Area 2B’s recent historical average share of 20% (with a weight of 0.7) and O32 stock distribution and relative harvest rate (with a weight of 0.3). Finally, an additional component is added to the IPHC Regulatory Area 2B TCEY accounting for 50% of the estimated yield lost due to U26 discard mortality in non-directed fisheries (aka ‘bycatch’) in waters off Alaska.
42. The Commission **NOTED** that the reference projection results (the default in the mortality projection tool) resulted in a 2021 TCEY of 39.0 million lbs ([Table 4, and 5](#)). This represents an increase from the reference level calculated for 2020 based on the 2019 stock assessment (31.9 million pounds), reflecting increased estimates of the 2011 and 2012 year-classes and, more importantly, the change from $F_{46\%}$ to $F_{43\%}$ as the reference level of fishing intensity.

Table 4. Comparison of TCEY values (Mlbs) among IPHC Regulatory Areas from 2019 and projected for 2021.

	2A	2B	2C	3A	3B	4A	4B	4CDE	Total
2019 Reference (SPR=46%)	0.78	4.91	6.26	16.35	2.97	2.21	1.95	4.59	40.00
2019 Adopted (SPR=41%) ¹	1.65	6.83	6.34	13.50	2.90	1.94	1.45	4.00	38.61
2020 Reference (SPR=46%)	1.65	6.22	4.88	9.63	2.89	2.22	1.25	3.16	31.90
2020 Adopted (SPR=42%)	1.65	6.83	5.85	12.20	3.12	1.75	1.31	3.90	36.60
2021 Reference (SPR=43%)	1.65	7.00	5.16	14.12	3.12	2.51	1.47	3.98	39.00

¹ The reported SPR value represents the estimate at the time of adoption. At the time the 2019 catch limits were adopted, they were predicted to result in an SPR of 47%.

43. The Commission **RECALLED** that the Pacific halibut mortality projections for 2021 based on the attainment of full Protected Species Catch (PSC, a.k.a. bycatch) by the non-directed fleets fishing in Alaska, U.S.A., while maintaining the reference SPR of 43% ([Table 5](#)), and as reported in the mortality projection tool), was not acceptable, as it would result in zero or substantially lower mortality limits for directed fleets operating in a number of Regulatory Areas.
44. The Commission **NOTED** uncertainty in the projection of unguided recreational mortality in IPHC Regulatory Areas 2C and 3A, the delay in the provision of final catch estimates for this fishery until September of the following year, the relative stability of final mortality estimates in recent years, and the absence of a catch mortality limit for these fisheries.
45. The Commission **NOTED** the projection supplement of detailed mortality by sector provided by the IPHC Secretariat, which used the average of the range provided by Alaska Department of Fish and Game for these estimates as an alternative for consideration. This alternative did not change the coastwide SPR, or TCEY nor the IPHC Regulatory Area-specific TCEYs, but could correspond to increased risk of exceeding the 2021 TCEY.
46. The Commission **RECALLED** the discussion of the basis for the relative harvest rates included in the current interim management procedure (1.0 for IPHC Regulatory Areas 2A-3A, and 0.75 for 3B-4CDE) found in paper <https://www.iphc.int/uploads/pdf/am/2020am/iphc-2020-am096-12.pdf>.
47. The Commission **NOTED** that relative harvest rates represent a combination of biological and management input, and that recent yield-per-recruit analyses suggest that IPHC Regulatory Areas 3B, 4A and 4CDE may have higher productivity than the current harvest rate policy, and Area 4B may have lower productivity at present than other Regulatory Areas.



48. The Commission **NOTED** that projections of mortality do not make a distinction among sources of O26 mortality within an IPHC Regulatory Area, but that differences in selectivity are propagated within the stock assessment and therefore included in the calculation of SPR.

Table 5. Pacific halibut mortality projected for 2021 based on the reference SPR (43%) and interim management procedure for TCEY distribution. All values reported in millions of net pounds.

Mortality Source	2A	2B	2C	3A	3B	4A	4B	4CDE	Total
non-FCEY mortality									
Commercial Discards	0.03	0.17	NA	NA	0.11	0.15	0.05	0.08	0.59
O26 Non-Directed Discards	0.10	0.23	0.09	1.14	0.42	0.24	0.12	2.20	4.54
Recreational	NA	0.04	1.16	1.70	0.01	0.02	0.00	0.00	2.93
Subsistence	NA	0.41	0.37	0.19	0.02	0.01	0.00	0.03	1.02
Total non-FCEY	0.14	0.84	1.61	3.03	0.56	0.42	0.17	2.31	9.09
FCEY mortality									
Commercial Discards	NA	NA	0.06	0.24	NA	NA	NA	NA	0.30
Recreational	0.61	0.92	0.65	1.94	NA	NA	NA	NA	4.12
Subsistence	0.03	NA	NA	NA	NA	NA	NA	NA	0.03
Commercial Landings	0.87	5.23	2.84	8.91	2.56	2.09	1.29	1.67	25.46
Total FCEY	1.51	6.15	3.55	11.09	2.56	2.09	1.29	1.67	29.91
TCEY	1.65	7.00	5.16	14.12	3.12	2.51	1.47	3.98	39.00
U26 Non-directed discards	0.00	0.03	0.00	0.29	0.06	0.08	0.01	0.78	1.25
Total	1.65	7.03	5.16	14.41	3.18	2.59	1.48	4.75	40.25

5.5 *Size limit review*

49. The Commission **NOTED** paper [IPHC-2021-AM097-09](#) which provided a summary of available data and an analysis of: 1) the effects of the current directed commercial fishery minimum size limit, and 2) the potential effects of a maximum size limit in this fishery, in response to the discussion and request from AM096.
50. The Commission **NOTED** that the evaluation provided decision-making information for consideration of the current MinSL and/or a MaxSL. The focus is on short-term yield, fishery and stock performance while retaining all other aspects of the IPHC's interim management procedure. It is not intended to provide a comparison of long-term performance of size limits as one part of a comprehensive management procedure. Such a comprehensive analysis may be done through management strategy evaluation (MSE). Questions regarding long-term change in spatial distribution and scale of recruitment and spawning biomass require the full 'closed-loop' approach used in the MSE.
51. The Commission **NOTED** the new results provided since IM096, making the reference projections for 2021 in the absence of a minimum size limit for the directed commercial fishery and comparing these results to the standard reference projections. This comparison indicated that the coastwide and IPHC Regulatory Area TCEYs could be increased by 3%, which would result in a 7% increase in directed commercial fishery landings coastwide for 2021, though the impact on long-term biomass and associated available yield, is unknown.



6. IPHC SCIENCE AND RESEARCH

6.1 *IPHC 5-year Biological & Ecosystem Science Research Plan (2017-21): update*

52. The Commission **NOTED** paper [IPHC-2021-AM097-10](#) which provided a description of progress on the IPHC 5-year Biological and Ecosystem Science Research Plan (2017-21).
53. The Commission **NOTED** the main objectives of the Biological and Ecosystem Science Research at the IPHC are to:
- 1) identify and assess critical knowledge gaps in the biology of the Pacific halibut;
 - 2) understand the influence of environmental conditions; and
 - 3) apply the resulting knowledge to reduce uncertainty in current stock assessment models.
54. The Commission **NOTED** that the primary biological research activities at the IPHC that follow Commission objectives are identified in the IPHC Five-Year Biological and Ecosystem Science Research Plan (2017-21). The various activities under within the plan are proposed, reviewed and approval internally at the IPHC Secretariat. These activities are summarized in five broad research areas designed to provide inputs into stock assessment and the management strategy evaluation processes, as follows:
- 1) **Migration.** Studies are aimed at further understanding reproductive migration and identification of spawning times and locations as well as larval and juvenile dispersal.
 - 2) **Reproduction.** Studies are aimed at providing information on the sex ratio of the commercial catch and to improve current estimates of maturity.
 - 3) **Growth and Physiological Condition.** Studies are aimed at describing the role of some of the factors responsible for the observed changes in size-at-age and to provide tools for measuring growth and physiological condition in Pacific halibut.
 - 4) **Discard Mortality Rates (DMRs) and Survival.** Studies are aimed at providing updated estimates of DMRs in both the longline and the trawl fisheries.
 - 5) **Genetics and Genomics.** Studies are aimed at describing the genetic structure of the Pacific halibut population and at providing the means to investigate rapid adaptive changes in response to fishery-dependent and fishery-independent influences.
55. The Commission **NOTED** the progress that the IPHC Secretariat has made in the five key research areas contemplated in the IPHC 5-Year Biological and Ecosystem Science Research Plan (2017-21) and, in particular, in the promising use of genomic approaches to address important questions related to stock structure and distribution, migration, and the genetic basis of key life-history traits (e.g. weight-at-age, maturity- and fecundity-at-age).

7. REPORT OF THE 21ST SESSION OF THE IPHC RESEARCH ADVISORY BOARD (RAB021)

56. The Commission **NOTED** the Report of the 21st Session of the IPHC Research Advisory Board (RAB021) ([IPHC-2020-RAB021-R](#)) which was presented by the Co-Chairperson, Dr Josep Planas.
57. The Commission **CONSIDERED** the recommendations made by the RAB021 and **AGREED** to take them into consideration when deliberating on relevant agenda items throughout the meeting.

8. REPORTS OF THE IPHC SCIENTIFIC REVIEW BOARD

58. The Commission **NOTED** the Reports of the 16th and 17th Sessions of the IPHC Scientific Review Board (SRB016 - [IPHC-2020-SRB016-R](#); SRB017 - [IPHC-2020-SRB017-R](#)) which were presented by the Dr. David Wilson, Executive Director) on behalf of the Chairperson, Dr Sean Cox (Simon Fraser University, Vancouver, Canada).



59. The Commission **CONSIDERED** the recommendations made by the SRB in 2020 and **AGREED** to take them into consideration when deliberating on relevant agenda items throughout the meeting.
60. The Commission **RECALLED** the request from the SRB016 (SRB016-Req. 19, shown below) for the Commission to hire a life-history modeller, and the associated response from the IPHC Secretariat. The Commission had previously considered this request at AM096 via paper [IPHC-2020-AM096-INF04](#), and decided not to proceed at this time.

SRB016–Req.19 (para. 52) “*NOTING that a common theme in programmatic studies is a need to understand growth, the maturation process and size and age at sexual maturity, and to incorporate this understanding into the assessment and MSE programs, the SRB reiterated its previous REQUEST that the IPHC Secretariat hire a PhD-level life history modeller with expertise in the areas that include life history and quantitative genetics. The SRB was advised that at this point in time, the hiring of a life-history modeller is not financially feasible unless either 1) additional contributions were appropriated by the Contracting Parties, or 2) a current FTE was replaced with a life-history modeller.*”

9. MANAGEMENT STRATEGY EVALUATION

9.1 IPHC Management Strategy Evaluation: update

61. The Commission **NOTED** paper [IPHC-2021-AM097-11](#) which provides a description of the IPHC MSE framework and simulations of management procedures for distributing the TCEY.
62. The Commission **ACKNOWLEDGED** the work of the IPHC Secretariat and the commitment of the MSAB leading to the delivery of MSE results.
63. The Commission **NOTED** that the current management procedures (MP) simulations cover a range of migration assumption scenarios. The relative performance of MPs may change with revised assumptions about migration arising from further research.
64. The Commission **NOTED** that all MPs evaluated met the primary biological sustainability objectives with the exception of maintaining the spawning biomass in IPHC Regulatory Area 4B above 2% of the coastwide spawning biomass. This single objective was not met by any MP evaluated.
65. The Commission **NOTED** that MPs were ranked using primary objectives. Among the best performing procedures were MP-D and MP-J. MP-D distributes the TCEY via O32 stock distribution and the interim management procedure, in combination with a constraint on yield viability and an SPR buffer to account for agreements in IPHC Regulatory Areas 2A and 2B. MP-J distributes the TCEY via a five-year average of O32 stock distribution but does not include agreements for IPHC Regulatory Area 2A and 2B.
66. The Commission **NOTED** that there are trade-offs between IPHC Regulatory Areas with regard to yield and stability in yield.
67. The Commission **AGREED** that the MSAB have a continuing role in the MSE process and assisting the Commission with harvest policy decisions, in accordance with the [IPHC Rules of Procedure \(2021\)](#).

9.2 Reports of the IPHC Management Strategy Advisory Board

68. The Commission **NOTED** the Reports of the 15th and 16th Sessions of the IPHC Management Strategy Advisory Board (MSAB015 - [IPHC-2020-MSAB015-R](#); MSAB016 - [IPHC-2020-MSAB016-R](#)) which were presented by Mr Adam Keizer (Canada) and Ms Rachel Baker (USA).
69. The Commission **CONSIDERED** the recommendations made by the MSAB in 2020 and **AGREED** to take them into consideration when deliberating on relevant agenda items throughout the meeting.



9.3 MSE Program of Work

- 70. The Commission **REQUESTED** that the IPHC Secretariat consider and develop a draft MSE Program of Work for review by the Commission. The MSE Program of Work should describe technical versus policy-oriented issues, linkages between/among specific work products, and sequencing considerations between/among items. The MSE Program of Work should describe the resources required to complete items.
- 71. The Commission **AGREED** to meet intersessionally to review the draft MSE program of work for the IPHC Secretariat and provide direction on the prioritisation of tasks over the next 1-2 years, as well as the role of the MSAB in contributing to those tasks.

10. IPHC FISHERY REGULATIONS: PROPOSALS FOR THE 2020-21 PROCESS

10.1 IPHC Secretariat fishery regulation proposals

10.1.1 IPHC Fishery Regulations: Mortality and Fishery Limits (Sect. 5)

- 72. The Commission **NOTED** and **ADOPTED** fishery regulation proposal [IPHC-2021-AM097-PropA1](#), which provides the mortality and fishery limits framework for population at AM097 ([Appendix IV](#)).
- 73. The Commission **ADOPTED** the distributed mortality limits for each Contracting Party, by IPHC Regulatory Area, ([Table 6](#)) and sector, as provided in [Appendix IV](#). [**Canada:** In favour=3, Against=0][**USA:** In favour=3, Against=0]

Table 6. Adopted TCEY mortality limits for 2021

Contracting Party IPHC Regulatory Area	Mortality limit (TCEY) (metric tonnes)	Mortality limit (TCEY) (mlbs)
Canada Total: 2B	3,175	7.00
USA: 2A	748	1.65
USA: 2C	2,631	5.80
USA: 3A	6,350	14.00
USA: 3B	1,415	3.12
USA: 4A	930	2.05
USA: 4B	635	1.40
USA: 4CDE	1,805	3.98
United States of America Total	14,515	32.00
Total (IPHC Convention Area)	17,690	39.00

- 74. The Commission **NOTED** that the FCEY values resulting from the adopted TCEY mortality limits, listed in [Appendix IV](#), are used by the Contracting Parties to determine fishery sector allocations, recognizing that each Contracting Party may implement more restrictive limits.
- 75. The Commission **REQUESTED** additional information on the management and data collection procedures used in the unguided recreational fishery in IPHC Regulatory Areas 2C and 3A, and for these to be presented to the Commission no later than the next Interim Meeting of the Commission.

10.1.2 IPHC Fishery Regulations: Commercial fishing periods (Sect. 9)

- 76. The Commission **NOTED** fishery regulation proposal [IPHC-2021-AM097-PropA2](#), which specified fishing periods for the commercial Pacific halibut fisheries.



Commercial fishing periods

77. The Commission **ADOPTED** fishing periods for 2021 as provided below, thereby superseding the relevant portions of Section 9 of the IPHC Pacific halibut fishery regulations ([Appendix V](#)) by specifying that commercial fishing for Pacific halibut in all IPHC Regulatory Areas may begin no earlier than 6 March and must cease on 7 December.

10.1.3 IPHC Fishery Regulations: minor amendments

78. The Commission **NOTED** and **ADOPTED** fishery regulation proposal [IPHC-2021-AM097-PropA3](#), which proposed amendments to ensure IPHC Secretariat were formally regulated to allow them to sample Pacific halibut at the point of landing, with minor modification as identified during AM097 ([Appendix VI](#)).

10.2 Contracting Party fishery regulation proposals

10.2.1 IPHC Fishery Regulations: Charter management measures in IPHC Regulatory Areas 2C and 3A (Sect. 29)

79. The Commission **NOTED** and **ADOPTED** fishery regulation proposal [IPHC-2021-AM097-PropB1](#), which proposed IPHC Regulation changes for charter recreational Pacific halibut fisheries in IPHC Regulatory Areas 2C and 3A ([Appendix VII](#)), in order to achieve the charter Pacific halibut allocation under the North Pacific Fisheries Management Council's (NPFMC) Pacific halibut Catch Sharing Plan:

- a) IPHC Regulatory Area 2C – one-fish bag limit with size limit of less than or equal to 50 inches or greater than or equal to 72 inches;
- b) IPHC Regulatory Area 3A – two-fish bag limit with one fish of any size and a second fish less than or equal to 32 inches, Wednesdays closed to retention of Pacific halibut, one trip per vessel and one trip per permit per day (no annual limit). See [IPHC-2021-AM097-PropB1](#) for additional detail.

10.2.2 IPHC Fishery Regulations: Commercial fishing periods (Sect. 9)

80. The Commission **NOTED** information paper [IPHC-2021-AM097-INF05](#), which proposed changing the fishing period days of the week for the IPHC Regulatory Area 2A non-tribal directed commercial Pacific halibut fishery.

81. The Commission **NOTED** the indication from the IPHC Secretariat that the deadline for Regulatory Proposals (as prescribed in the IPHC Rules of Procedure (2020)) was 30 days prior to the opening of the 97th Session of the IPHC Annual Meeting (AM097) (i.e. 26 December 2020).

82. The Commission **AGREED** to make an exception to this Rule, and consider the contents of [IPHC-2021-AM097-INF05](#), received on 28 January 2021.

83. The Commission **ADOPTED** fishery regulation changes contained within [IPHC-2021-AM097-INF05](#), which revises the derby season structure from openings Monday through Wednesday, to openings Tuesday through Thursday ([Appendix VIII](#)).

10.3 Other Stakeholder fishery regulation proposals

10.3.1 Commercial Fishing Period (Sect. 9)

84. The Commission **NOTED** and **DEFERRED** fishery regulation proposal [IPHC-2021-AM097-PropC1 Rev 1](#), which proposed opening the commercial Pacific halibut fishing period (season) year round (1 January to 31 December), subject to further consultation and analysis with stakeholders and management agencies on the administrative and policy implications of a year round fishery.



85. The Commission **NOTED** the experience in 2020, with a slight extension of the commercial fishery in IPHC Regulatory Area 2B from 15 November to 7 December, which resulted in a small number of additional deliveries after the 15th of November 2020.
86. The Commission **NOTED** the opportunity to further test a lengthened fishing period in 2021, through the extension of the directed commercial Pacific halibut fishery closing date to 7 December for all Regulatory Areas.
87. The Commission **RECOMMENDED** that further consultations between Contracting Parties and fishery stakeholders on the administrative and policy implications of a year round fishery would support the decision process for the 98th Session of the IPHC Annual Meeting (AM098; January 2022) on potential further extensions of the direct commercial fishing period.

10.4 Stakeholder statements

88. The Commission **NOTED** paper [IPHC-2021-AM097-INF01 Rev 1](#) which provided the Commission with a consolidated document containing submitted 'Statements' from stakeholders on the range of Regulatory Proposals and other topics submitted to the Commission for its consideration at the 97th Session of the IPHC Annual Meeting (AM097).

11. CONTRACTING PARTY NATIONAL REPORTS

11.1 Canada

89. The Commission **NOTED** the Contracting Party report from Canada (IPHC Regulatory Area 2B; [IPHC-2021-AM097-NR01](#)).

11.2 United States of America

90. The Commission **NOTED** the Contracting Party report from the United States of America IPHC Regulatory Areas 2A/2C/3/4; [IPHC-2021-AM097-NR02 Rev 1](#)).

12. PACIFIC HALIBUT FISHERY ECONOMICS UPDATE

91. The Commission **NOTED** paper [IPHC-2021-AM097-14](#) which provided an update on the IPHC economic study, including progress on developing the economic impact assessment model, state of the collection of primary economic data from Pacific halibut dependent sectors, and plan for the year ahead.
92. The Commission **NOTED** that the accuracy of economic impact assessment of the Pacific halibut resource depends on broader stakeholders' active participation in developing the necessary data for analysis.
93. The Commission **NOTED** that the accuracy of the assessment of community impacts depends on cooperation between Contracting Parties and the IPHC on economic data exchange.
94. The Commission **REQUESTED** that the IPHC Secretariat develop and distribute a Media Release on the Fishery economic project and the associated economic survey for industry to complete.

13. REPORT OF THE 97TH SESSION OF THE IPHC FINANCE AND ADMINISTRATION COMMITTEE (FAC097)

95. The Commission **NOTED** the Report of the 97th Session of the IPHC Finance and Administration Committee (FAC097) ([IPHC-2021-FAC097-R](#)) which was presented by Dr David T. Wilson (IPHC Executive Director).

13.1 Financial Statements for FY2020

96. The Commission **NOTED** the Financial Statements for FY2020, as detailed in paper [IPHC-2021-FAC097-04 Rev 1](#).



13.2 Annual independent auditor's report (FY2020)

97. The Commission **NOTED** and **ACCEPTED** the independent external auditors report for FY2020 ([IPHC-2021-FAC097-05](#)), as per Regulation 14 of the IPHC Financial Regulations (2020), by consensus.
98. The Commission **ACKNOWLEDGED** the great strides that the IPHC Secretariat has taken over the past year to improve the transparency, accountability, and accessibility of the IPHC accounting systems and practices.

13.3 FY2021 Budget – update

99. The Commission **NOTED** the update on the FY2021 budget (financial period: 1 October 2020 to 30 September 2021), and that current expenditure for the first quarter of FY2021 is in-line with the approved budget.

13.4 Budget estimates: FY2022 (for approval); FY2023 and FY2024 (for information)

FY2022

100. The Commission **NOTED** the proposed FY2022 budget (financial period: 1 October 2021 to 30 September 2022; [Appendix IX](#)), presented by the IPHC Secretariat.
101. The Commission **NOTED** the IPHC Secretariat proposed Contracting Party contributions for FY2022 as follows:
- a) **Canadian Contribution:**
 - i. **US\$945,427** for contributions to the IPHC General Fund;
 - ii. **US\$111,250** to cover IFC pension deficit payments.
 - b) **U.S.A. Contribution:**
 - i. **US\$4,365,648** for contributions to the IPHC General Fund;
 - ii. **US\$139,424** to cover IFC pension deficit payments;
 - iii. **US\$475,000** to cover the IPHC Headquarters (lease and maintenance).
102. The Commission **AGREED** for the two Contracting Parties to engage in inter-sessional discussions over the coming months to adopt a budget for FY2022 and the associated Contributions. In doing so, the Contracting Parties may consult with and request assistance from the IPHC Secretariat.

FY2023 and FY2024

103. The Commission **NOTED** that the IPHC Secretariat's indicative budgets for FY2023 and FY2024 as provided in [Appendix X](#) and [Appendix XI](#), respectively.

13.5 IPHC Financial Regulations (2021)

104. The Commission **ENDORSED** and **ADOPTED** the IPHC Financial Regulations (2021) as provided in paper [IPHC-2021-AM097-INF04 Rev 3](#) by consensus, and **REQUESTED** that the IPHC Secretariat finalise and publish them accordingly.
105. The Commission **REQUESTED** that the IPHC Secretariat will undertake an inter-sessional review and recommend further improvements to the Financial Regulations of the Commission, including the basis of accounting to better align with GAAP standards while maintaining regulatory compliance.

13.6 IPHC Rules of Procedure (2021)

106. The Commission **ADOPTED** the IPHC Rules of Procedure (2021), as provided in [IPHC-2021-FAC097-09](#) by consensus, and **REQUESTED** that the IPHC Secretariat finalise and publish them accordingly.



107. The Commission **REQUESTED** that the IPHC Secretariat undertake an inter-sessional review and recommend further improvements to the IPHC Rules of Procedure to the Commission, noting the CB's recommendation (to change when Chairs are elected in their rule), PAB noting the conflicting text in the Rules, and roles of the Commissions Secretariat.

14. REPORT OF THE 91ST SESSION OF THE IPHC CONFERENCE BOARD (CB091)

108. The Commission **NOTED** the Report of the 91st Session of the IPHC Conference Board (CB091) ([IPHC-2021-CB091-R](#)) which was presented by the Co-Chairpersons of the CB, Mr Jim Lane (Canada) and Ms Linda Behnken (USA). A total of 66 (55 in 2020) member organisations attended the Session from the two (2) Contracting Parties. The meeting was opened by Mr. Jim Lane (Canada) and Ms Linda Behnken (U.S.A.) (Co-Chairpersons), who welcomed participants.

109. The Commission **CONSIDERED** the recommendations made by the CB091 ([IPHC-2021-CB091-R](#)) and provided comment or endorsement as specified below.

110. The Commission **NOTED** the CB proposed 2021 fishing period (season) dates for the commercial fishery:

- a) Opening: 4 March 2021;
- b) Closing: 31 December 2021.

111. The Commission **NOTED** the CB proposed TCEY catch limits for the 2021 fishing period as provided in [Table 7](#).

Table 7. Conference Board (CB) recommended TCEY mortality limits for 2021.

IPHC Regulatory Area	Canada Mortality limit (TCEY) (Mlbs)	USA Mortality limit (TCEY) (Mlbs)
2A		Interim agreement
2B	Interim agreement	
2C		5.66
3A		13.79
3B		3.12
4A		2.38
4B		1.44
4CDE		3.98
Total (IPHC Convention Area)		39.00

15. REPORT OF THE 26TH SESSION OF THE IPHC PROCESSOR ADVISORY BOARD (PAB026)

112. The Commission **NOTED** the Report of the 26th Session of the IPHC Processor Advisory Board (PAB026) ([IPHC-2021-PAB026-R](#)) which was presented by the Chairperson of the PAB, Mr Carl Nordmann (Canada). A total of 24 eligible members lodged an accreditation/authorisation form for the meeting, however, only 13 (15 in 2020) were present at the commencement of the Session from the two (2) Contracting Parties.

113. The Commission **CONSIDERED** the recommendations made by the PAB026 ([IPHC-2021-PAB026-R](#)) and provided comment or endorsement as specified below.

114. The Commission **NOTED** the PAB proposed 2021 fishing period (season) dates for the commercial fishery:

- a) Opening: 3 April 2021 at noon local time;
- b) Closing: 15 November 2021 at noon local time.



115. The Commission **NOTED** the PAB proposed TCEY catch limits for the 2021 fishing period as provided in [Table 8](#).

Table 8. Processor Advisory Board (PAB) recommended TCEY mortality limits for 2021.

IPHC Regulatory Area	Mortality limit (TCEY) (mlbs)
2A	1.65
2B	7.00
2C	5.16
3A	14.12
3B	3.12
4A	2.51
4B	1.47
4CDE	3.98
Total (IPHC Convention Area)	39.0

16. OTHER BUSINESS

16.1 IPHC meetings calendar (2021-23)

116. The Commission **NOTED** the proposed dates and places for the meetings of the Commission and its subsidiary bodies, and that the current COVID-19 pandemic may require the IPHC Secretariat to make additional modifications throughout the year.

117. The Commission **NOTED** and **ACCEPTED** the offer by the USA to host the 98th Session of the IPHC Annual Meeting (AM098) in 2022, in the Seattle/Bellevue area, WA, U.S.A. from 24 to 28 January 2022. Should the COVID-19 pandemic remain an issue at that time, the meeting may be held electronically.

16.2 Election of a Chairperson and Vice-Chairperson for the next year

118. The Commission **NOTED** that the term of the current Chairperson, Mr Paul Ryall (Canada), is due to expire at the closing of the current Session, and as per Rule 9 of the IPHC Rules of Procedure (2020) the Commission is required to elect a new Chairperson for the next year.

119. **NOTING** Rule 9 of the IPHC Rules of Procedure (2020), the Commission **CALLED** for nominations for the newly vacated position of Chairperson of the IPHC for the next year. Mr Glenn Merrill (U.S.A.) was nominated, seconded, and **ELECTED** as Chairperson of the IPHC for the next year.

120. The Commission **NOTED** that the term of the current Vice-Chairperson, Mr Glenn Merrill (U.S.A.), is due to expire at the closing of the current Session, and as per Rule 9 of the IPHC Rules of Procedure (2020) the Commission is required to elect a new Vice-Chairperson for the next year.

121. **NOTING** Rule 9 of the Rules of Procedure (2020), the Commission **CALLED** for nominations for the newly vacated position of Vice-Chairperson of the IPHC for the next year. Mr Paul Ryall (Canada) was nominated, seconded, and **ELECTED** as Vice-Chairperson of the IPHC for the next year.

17. REVIEW OF THE DRAFT AND ADOPTION OF THE REPORT OF THE 97TH SESSION OF THE IPHC ANNUAL MEETING (AM097)

122. The Commission **REQUESTED** that the IPHC Secretariat finalise and publish the IPHC *Pacific Halibut Fishery Regulations (2021)* as soon as possible, **NOTING** that only minor editorial and formatting changes are permitted beyond the decisions made by the Commission at the AM097.

123. The Report of the 97th Session of the IPHC Annual Meeting ([IPHC-2021-AM097-R](#)) was **ADOPTED** via correspondence on 11 February 2021, including the consolidated set of recommendations and requests arising from AM097, provided at [Appendix XII](#).



APPENDIX I

LIST OF PARTICIPANTS FOR THE 97TH SESSION OF THE IPHC ANNUAL MEETING (AM097)

Commission Officers

Chairperson	Vice-Chairperson
Mr Paul Ryall (Canada)	Mr Glenn Merrill (United States of America)

Commissioners

Canada	United States of America
Mr Paul Ryall	Mr Glenn Merrill
Mr Neil Davis	Mr Robert Alverson
Mr Peter DeGreef	Mr Richard Yamada

Advisors/experts

Ms Maureen Finn – Technical Advisor	Dr Jim Balsiger – Policy Advisor
Ms Ann-Marie Huang – Scientific Advisor	Ms Kathryn Blair – Technical Advisor
Mr Adam Keizer – Policy Advisor	Dr Meaghan Bryan – Scientific Advisor
Mr Gordon Moore – Policy Advisor	Dr Dana Hanselman – Scientific Advisor
Mr Justin Turple – Policy / Financial Advisor	Ms Andrea Hattan – Legal Advisor
	Dr Jim Ianelli – Scientific Advisor
	Ms Caitlin Imaki – Legal Advisor
	Mr Kurt Iverson – Technical Advisor
	Mr John Lepore – Legal Advisor
	Mr Joshua Lindsay – Technical Advisor
	Mr Frank Lockhart – Technical / Policy Advisor
	Ms Staci MacCorkle – Financial / Administrative Advisor
	Dr Carey McGilliard – Scientific Advisor
	Mr Brian McTague – Legal Advisor
	Ms Alicia M. Miller – Technical Advisor
	Mr Demian Schane – Legal Advisor
	Ms Rose Stanley – Legal Advisor
	Mr Ryan Wulff – Policy Advisor

Observers

Participant	Organisation	Email
Pat Ahern	West Coast Fishing Guides Association	pat.ahern@shaw.ca
Lyle Almond	Lower Elwha Klallam Tribe	lyle.almond@elwha.org
Matthew Alward	North Pacific Fisheries Association	matt@bulletproofnets.com
Kelly Ames	NMFS WCR	kelly.ames@noaa.gov
Jason Anderson	O'Hara Corporation	janderson@oharacorporation.com
Darrin Anderson	Serenity Fisheries LLC	flynfish@mac.com
Philip Anderson	Pacific Fishery Management Council	pmand001@comcast.net
Katie Archer	Archipelago Marine Research Ltd.	katiea@archipelago.ca
Chuck Ashcroft	Sport Fishing Advisory Board	chuckashcroft@telus.net
Rachel Baker	Alaska Department of Fish & Game	rachel.baker@alaska.gov
Kynan Barrios	NOAA Law Enforcement	kynan.barrios@noaa.gov
Nazary Basargin	K Bay Fisheries, Homer	nibasargin@gmail.com



Kiril Basargin	K-Bay Fisheries Association	wildlegacyseafoods@gmail.com
Margie Bauman	Fishermen's News & The Cordova Times	fisheriesreporter@gmail.com
Steve Becic	Pacific Seafood	sbecic@pacseafood.com
Linda Behnken	Alaska Longline Fishermen's Association	alfafishak@gmail.com
Jordan Belveal	Halibut Advisory Board	jordan@jordanbelveal.com
James Benton	Fisherman	jcsbenton@aol.com
Jeff Berger	Pacific Star Seafoods	jeffb@eefoods.com
Owen Bird	Sport Fishing Institute of BC	birdo@sportfishing.bc.ca
Shannon Boldt	PNPTC	sboldt@pnptc.org
Julie Bonney	AGDB	agdb@gci.net
Christopher Bos	South Vancouver Island Anglers Coalition	chris@anglerscoalition.com
Colby Boulton	Peter Pan Seafood Co, LLC	colbyb@ppsf.com
Douglas Bowen	Alaska Boats & Permits, Inc.	doug@alaskaboat.com
David Boyes	N/A	mcboyes@telus.net
Tiare Boyes	BC Tuna Fishermens Association	tiare@leewardltd.com
Forrest Braden	Southeast Alaska Guides Organization	forrest@seagoalaska.org
David Brindle	Pacific Seafood	dbrindle@pacseafood.com
Aaron Brooks	Jamestown S'Klallam Tribe	abrooks@jamestowntribe.org
Captain Kevin Burchfield	Juneau Charter Boat Operators Association	lostinalaska@gci.net
Bernie Burkholder	Sablefish & Halibut Pot Association	bernieburkholder@gmail.com
Greg Busch	NOAA OLE - West Coast Division	greg.busch@noaa.gov
Karla Bush	State of Alaska	karla.bush@alaska.gov
Ann Bussell	Fisheries and Oceans Canada (DFO)	ann.bussell@dfo-mpo.gc.ca
Mark Callahan	Cally Seafoods	mcallahan55@outlook.com
Russell Cameron	UFAWU/Unifor	russelljcameron@yahoo.ca
Marc Carrel	Cordova District Fishermen United	marc.carrel@gmail.com
Benjamin Cheeseman	NOAA	benjamin.cheeseman@noaa.gov
Spencer Chute	Seago	spencerchute@gmail.com
Paul Clampitt	SHPA	pfishcl@gmail.com
Gary Cline	Bristol Bay Economic Development Corporation	gary@bbedc.com
St. Paul Fish Co Fishing	St. Paul Fish Co	jeff@spfishco.com
William Cowpar	Council of the Haida Nation	shawn.cowpar@haidanation.com
Kelsey Cullen	Archipelago Marine Research	kelseyc@archipelago.ca
Joshua Cummings	US Embassy in Ottawa	cummingsji@state.gov
Richard Curran	N/A	seaward99835@yahoo.com
Maria Davis	NPFMC	maria.davis@noaa.gov
Shannon Davis	TRG, LLC	shannond@trgsystems.net
Taylor Debevec	NOAA - NMFS	taylor.debevec@noaa.gov
Jane DiCosimo	NMFS retired	janedicosimo@gmail.com
Angel Drobnica	APICDA	adrobnica@apicda.com



IPHC-2021-AM097-R

Michele Drummond	N/A	drummondmo@gmail.com
Christopher (Kit) Durnil	Pacific Seafood Group	kdurnil@paseafood.com
Lando Echeverio	Seven Sisters Fisheries	lechevario@yahoo.com
Robin Ehlke	Pacific Fishery Management Council	robin.ehlke@noaa.gov
Will Ellis	NOAA - OLE	will.ellis@noaa.gov
Garrett Elwood	NGFA	fvwesternfreedom@gmail.com
David Empey	Centennial Foodservice	dave.empey@c2cmax.com
Diana Evans	NOAA	diana.evans@noaa.gov
Craig Evens	PVOA	craigjevans@gmail.com
Daniel Falvey	Alaska Longline Fishermen's Assn.	myriadfisheries@gmail.com
Jeff Farvour	N/A	jefarv@gmail.com
Duncan Fields	Cape Barnabas, Inc.	dfields@ptialaska.net
Wallace Fields	Reformation LLC	wfields@gci.net
Mark Fina	US Seafoods LLC	mfina@usseafoods.net
Austin Flanigan	University of Alaska Fairbanks	aflanigan@une.edu
Michael Fowler	Sport Fishing Advisory Board - North Coast	midon@protonmail.ch
Ronald Frank	Maa-nulth Treaty Society	ron.j.frank@gmail.com
Dave Fraser	ACDC	dfraser@olympus.net
Nicole Frederickson	Island Marine Aquatic Working Group	nfrederickson.imawg@gmail.com
Cristy Fry	N/A	realist468@gmail.com
Arne Fuglvog	Glacier Fish Company	arne@glacierfish.com
Mary Furuness	NOAA	mary.furuness@noaa.gov
Bob Gallagher	Gallagher's Sports Fishing Camp	gallaughers1@shaw.ca
Tom Gemmell	Halibut Coalition	tom.gemmell@gmail.com
Chris German	U.S. Coast Guard	christofer.l.german2@uscg.mil
Frank Geyer	Quileute Tribe	frank.geyer@quileutenation.org
Jason Gobin	Tulalip Tribes	jasongobin@tulaliptribes-nsn.gov
Tyler Goodnight	Northport Fisheries	tyler@northportfisheries.com
Eric Grauvogel	N/A	egrauvogel@hotmail.com
Angus Grout	Steveston Halibut Association	rommel@telus.net
Jennifer Hagen	Quileute Indian Tribe	jennifer.hagen@quileutenation.org
Heather Hall	Washington Department of Fish & Wildlife	heather.hall@dfw.wa.gov
Kathy Hansen	SEAFA	kathy@seafa.org
Randy Harder	PNPTC	rharder@pnptc.org
Abigail Harley	NOAA	abigail.harley@noaa.gov
Jim Hasbrouck	Alaska Department of Fish & Game	james.hasbrouck@alaska.gov
Darlene Haugan	Archipelago Marine Research Ltd.	darleneh@archipelago.ca
Robert Hauknes	Area F Troll Association	robert_hauknes@hotmail.com
Christian Heath	ODFW	christian.t.heath@state.or.us
Anna Henry	NPFMC	anna.henry@noaa.gov
Nick Heras	7 Seas	nheras@7seas.ca
David Hernandez	California Department of Fish & Wildlife	david.hernandez@wildlife.ca.gov



IPHC-2021-AM097-R

Lenny Herzog	Area 4 Concerned Harvesters	herzog.lenny@gmail.com
Michael Ho	Tradex Foods	mho@seanet.com
Brian Hoffman	Hoh Tribe	brian.hoffman@hohtribe-nsn.org
Duff Hoyt	OBI Seafoods	duff.hoyt@obiseafoods.com
Jim Hubbard	Kruzof Fisheries LLC	jim@kruzoffisheries.com
James C Hughes	Seafood Producers Cooperative	carterhughes@hotmail.com
Dan Hull	N/A	danhullak@gmail.com
Chelsea Hutton	N/A	chelsea.hutton@iphc.int
Donald Isaac	IMAWG	dvictorisaac560@gmail.com
Lorne Iverson	B.C. Halibut Longliner's Association	lorneiverson@telus.net
Gerald James	Lummi nation	geraldj@lummi-nsn.gov
William Jasper	Makah Fisheries Management	william.jasper@makah.com
Ben Jevons	Alaska Department of Fish & Game	ben.jevons@alaska.gov
Jeremiah Johnny	Nooksack Tribe	jjohnny@nooksack-nsn.gov
James Johnson	Deep Sea Fishermen's Union	jj.deepseafishermensunion@gmail.com
Ed Johnstone	Quinault Indian Nation	edward.johnstone@quinault.org
Steve Joner	Makah Fisheries Management	gofish@olypen.com
Jeff Kauffman	Commercial Fisherman	jeffkauffman34@gmail.com
Joel Kawahara	Coastal Trollers Association	joelkaw@earthlink.net
Tiffany Keen	Archipelago	tiffanyk@archipelago.ca
Jessie Keplinger	OBI Seafoods	jessie.keplinger@obiseafoods.com
Karl Klaptorsk	N/A	karlbutlove@gmail.com
Alana Knight	Fisherwoman	youreoneinten@yahoo.com
Michael Kohan	Sitka Salmon Shares	michael.kohan@sitkasalmonshares.com
Matthew Kostiuk	LFV-SFAC	kostiukmatt@hotmail.com
Linda Kozak	KOZAK AND ASSOC.	lindakozak@gmail.com
Gerry Kristianson	SFAB Main Board	gerrykr@telus.net
Rob Kronlund	Interface Fisheries Consulting Ltd.	interfacefisheries@gmail.com
Sarah La Belle	NPFMC	sarah.labelle@noaa.gov
Adam Lake	Alaska Department of Fish & Game	adam.lake@alaska.gov
Jim Lane	N/A	jim.lane@nuuchahnulth.org
Michael Laukitis	N/A	buck.magicfish@gmail.com
Arne Lee	Fishing Vessel Owners Association	arnelee@embarqmail.com
Charles Leid	N/A	aksailorman@gmail.com
Phillip Lestenkof	Central Bering Sea Fishermen's Association	plestenkof@cbsfa.com
Maddie Lightsey	Alaska Boats & Permits, Inc.	maddie@alaskaboat.com
Josh Lindsay	NOAA - NMFS	joshua.lindsay@noaa.gov
Layton Lockett	Adak Community Development Corporation	llockett@adak-ak.gov
Dan Macdonald	Exceller Fisheries, Inc.	danmac5@outlook.com
Thomas Marking	RFA-California	tmmarking@sbcglobal.net
Mary Marking	Humboldt Area Saltwater Angers	ma5marking@gmail.com
Sarah Marrinan	NPFMC	sarah.marrinan@noaa.gov
Jim Martin	Alaska Charter Association	jim@alaskacharter.org
Robert Marvelle	NOAA	robert.marvelle@noaa.gov
Jess Marx	-	jmar907@gmail.com



Lynn Mattes	Oregon Department of Fish & Wildlife	lynn.mattes@state.or.us
Scott Mazzone	Quinault Indian Nation	smazzone@quinault.org
Heather McCarty	CBSFA	hdmccarty@gmail.com
Caroline Mcknight	California Department of Fish & Wildlife	caroline.mcknight@wildlife.ca.gov
Shawn McManus	Deep Sea Fishermen's Union	shawn.mcmanus@yahoo.com
Myron Melovidov	Central Bering Sea Fishermen's Association	mmelovidov@cbsfa.com
Ray Melovidov	Central Bering Sea Fishermen's Association	raymelovidov@cbsfa.com
Matt Metcalf	N/A	mmetcalf6003@charter.net
Thomas Meyer	NOAA GC	tom.gack.meyer@noaa.gov
Andy Mezirow	NPFMC	graylight@alaskan.net
Bryna Mills	-	brynamichelle@gmail.com
Malcolm Milne	North Pacific Fisheries Association	milnemarine@yahoo.com
Steven Minor	Ocean2Table Alaska LLC	steve@wafro.com
Victoria Moore	F/V Castaway	vmcastaway@gmail.com
Joe Morelli	SPC	jmorelli@spsales.com
James Mykland	CDFU	jlmykland@gmail.com
Lisa Newland	N/A	fairwfish@aol.com
Carina Nichols	Office of Senator Dan Sullivan	carina_nichols@sullivan.senate.gov
Corey Niles	Washington Department of Fish & Wildlife	corey.niles@dfw.wa.gov
Carl Nordmann	S.M. Products (B.C.) Ltd.	carl@halibut.ca
Per Odegaard	Fishing Vessel Owners Association	vanseeodegaard@hotmail.com
Michael Offerman	Edmonds Veteran Independent Longliners	longlinr@gmail.com
Kristina Olden	Fishing Vessel Owners Association	kristiansolsen@gmail.com
Mike Okoniewski	Pacific Seafood	mokoniewski.consultant@pacificseafood.com
Megan O'Neil	Petersburg Vessel Owner's Association	pvoa@gci.net
Jamie O'Neill	Dock Street Brokers	jamie@dockstreetbrokers.com
Martin Paish	Sport Fishing Institute of BC	martinpaish1@gmail.com
Peggy Parker	Halibut Association of North America	peggyparker616@gmail.com
Melanie Parker	California Department of Fish & Wildlife	melanie.parker@wildlife.ca.gov
Sam Parker	N/A	sebastesboy@hotmail.com
Mateo Paz-Soldan	City of Saint Paul Island, AK	mateo@mpstrategies.net
Alex Perry	NOAA	alex.perry@noaa.gov
Joe Petersen	Northwest Indian Fisheries Commission	jpetersen@nwifc.org
Joel Peterson	Bristol Wave	joelpeterson@clipperseafoods.com
Jeffrey Philemonoff	F/V Voyager	jphilemonoff@hotmail.com
Lyle Pierce	VILA	lyle_p@shaw.ca
George Pollock	Aleut Enterprise, LLC	gpollock@aleutenterprise.com



IPHC-2021-AM097-R

Landry Price	Youkon Delta Fisheries Development Association	landry@ydfda.org
Mark Price	Yukon Delta Fisheries Development Association	landry.ydfda@gmail.com
Jedediah Raskie	U.S. Coast Guard	jedediah.a.raskie@uscg.mil
Kathryn Read	Ocean Outcomes	kathryn@oceanoutcomes.org
Steve Ricci	Salmon Shares	steve.ricci@sitkasalmnshares.com
Brian Ritchie	Homer Charter Association	brianandrewritchie@gmail.com
Whitney Roberts	Washington Department of Fish & Wildlife	whitney.roberts@dfw.wa.gov
Matt Robinson	Bristol Bay Economic Development Corporation	matt@bbedc.com
Kevin Romanin	Province of British Columbia, Ministry of Agriculture, Agriculture Science & Policy Division	kevin.romanin@gov.bc.ca
Jose Roques	Bellingham Cold Storage	jose.roques@bellcold.com
Brett Roth	Fisherman	alaskabrett@yahoo.com
Trevor Ruelle	Fisheries and Oceans Canada (DFO)	trevor.ruelle@dfo-mpo.gc.ca
Christa Rusel	A-TLEGAY	chistarusel@shawcable.com
David Rutz	Alaska Department of Fish & Game	david.rutz@alaska.gov
Annika Saltman	Fishermen's Finest Inc	asaltman@fishermensfinest.com
Quincy Sample	Pacific Coast Fishing Vessels Owners Guild	quintonsample@gmail.com
Michael Sawin	Westport Charter Boat Association	sawinmikey@gmail.com
Chancy Schaaf	University of Texas Rio Grande Valley	chancy.schaaf@noaa.gov
Robert Schell	N/A	alfaye@gci.net
Joe Schumacker	Quinault Indian Nation, Dept. of Fisheries	jschumacker@quinault.org
Martin Schuster	Alaska Department of Fish & Game	martin.schuster@alaska.gov
Chad See	Freezer Longline Coalition	chadsee@freezerlongline.biz
Rebecca Skinner	Alaska Whitefish Trawlers Association	execdir@alaskawhitefishtrawlers.org
Miles Smith	Dana Besecker Company	miles@dfbcompany.com
Ken Smith	The Aleut Corporation	ksmith@aleutenterprise.com
Maggie Sommer	Oregon Department of Fish and Wildlife	maggie.sommer@state.or.us
Tachi Sopow	-	tsopow77@gmail.com
Donald Spigelmyre	OBI Seafoods	don.spigelmyre@obiseafoods.com
Chris Sporer	Pacific Halibut Management Association of BC	chris.sporer@phma.ca
Robbie St. Louis	French Creek Seafoods	rob@frenchcreek.ca
Drew Stafford	U.S. Coast Guard	drew.m.stafford@uscg.mil
Ben Starkhouse	Lummi	bens@lummi-nsn.gov
Jeff Stephan	United Fishermen's Marketing Association	jeff.stephan@me.com
Liam Stockwell	Aero Trading	liam@aerotrading.ca
Jordan Stover	Fisherman	stoverj565@gmail.com



IPHC–2021–AM097–R

Todd Strand	Bob's Trophy Charters	tstrand.mail@gmail.com
Alexander Stubbs	Stubbs Marine Enterprises	stubbsmarine@gmail.com
Daniel Studt	NOAA Fisheries	daniel.studt@noaa.gov
William Sullivan	Kachemak Bay Seafood's	freshhalibut@gmail.com
David Summers	Serengeti Fishing Charters	canucksfanatic44@hotmail.com
Russell Svec	Makah Tribe	russell.svec@makah.com
Georte Swanaset Jr.	Nooksack Indian Tribe Natural/Cultural Resources	george.swanasetjr@nooksack-nsn.gov
David Tate	Ditidaht First Nation	d.darryltate@gmail.com
Diana Tersteeg	Alaska Department of Fish & Game	diana.tersteeg@alaska.gov
Blake Tipton	S.M. Products (B.C.) Ltd.	blake@halibut.ca
Troy Tirrell	Highmark Fisheries LLC	tms@gci.net
Andrew Torres	NOAA WCD OLE	andrew.torres@noaa.gov
Jonathan Turnea		jturnea@gmail.com
Mike Turner	Province of British Columbia, Ministry of Agriculture, Agriculture Science & Policy Division	michael.r.turner@gov.bc.ca
Anne Vanderhoeven	Arctic Storm	avanderhoeven@arcticstorm.com
Joe Viechnicki	KFSK-FM	joe@kfsk.org
Sarah Webster	Alaska Department of Fish & Game	sarah.webster@alaska.gov
Erin Weckworth	Quatsino First Nation	fisheries@quatsinofn.ca
Ernie Weiss	Aleutians East Borough	eweiss@aeboro.org
Laine Welch	N/A	msfish@alaskan.com
Abigail Welch	PGST	awelch@pgst.nsn.us
Mike Wells	N/A	wellsmichael86@gmail.com
James Whitethorn	West Brothers	kiviok4@aol.com
Paul Wilkins	Coastal Villages Region Fund	paul_w@coastalvillages.org
Ken Wing	Fisherman	kwing@dccnet.com
Chris Woodley	Groundfish Forum	chrisw@seanet.com
Robert Wurm	Alaskan Leader Fisheries	rob@alaskanleader.com
Marci Yaremko	California Department of Fish & Wildlife	marci.yaremko@wildlife.ca.gov
Anna Young	Archipelago Marine Research Ltd.	annay@archipelago.ca

IPHC Secretariat

Participant	Title	Email
Dr David Wilson	Executive Director	david.wilson@iphc.int
Mr Keith Jernigan	Assistant Director	keith.jernigan@iphc.int
Ms Lara Erikson	Branch Manager – Fisheries Statistics & Services Branch	lara.erikson@iphc.int
Dr Josep Planas	Branch Manager – Biological & Ecosystem Sciences Branch	josep.planas@iphc.int
Support staff		
Dr Piera Carpi	Researcher (MSE)	piera.carpi@iphc.int
Ms Kamala Carroll	Fisheries Data Specialist	kamala.carroll@iphc.int
Ms Kelly Chapman	Administrative Specialist	kelly.chapman@iphc.int
Ms Tara Coluccio	Administrative Specialist	tara.coluccio@iphc.int



Mr Claude Dykstra	Research Biologist	claude.dykstra@iphc.int
Mr Ed Henry	Fisheries Data Specialist	edward.henry@iphc.int
Dr Allan Hicks	Quantitative Scientist	allan.hicks@iphc.int
Dr Barbara Hutniczak	Fisheries Economist	barbara.hutniczak@iphc.int
Mr Colin Jones	Setline Survey Specialist	colin.jones@iphc.int
Mr Tom Kong	Fisheries Data Specialist	thomas.kong@iphc.int
Ms Dana Rudy	Otolith Technician	dana.rudy@iphc.int
Ms Lauri Sadorus	Research Biologist	lauri.sadorus@iphc.int
Ms Erin Salle	Administrative Specialist	erin.salle@iphc.int
Dr Ian Stewart	Quantitative Scientist	ian.stewart@iphc.int
Mr Afshin Taheri	Programmer	afshin.taheri@iphc.int
Ms Monica Thom	Setline Survey Specialist	monica.thom@iphc.int
Mr Robert Tynes	Information Technology Specialist	robert.tynes@iphc.int
Ms Kayla Ualesi	Setline Survey Coordinator	kayla.ualesi@iphc.int
Dr Ray Webster	Biometrician	ray.webster@iphc.int



APPENDIX II
AGENDA FOR THE 97TH SESSION OF THE IPHC ANNUAL MEETING (AM097)

- 1. OPENING OF THE SESSION** (Chairperson)
 - 2. ADOPTION OF THE AGENDA AND ARRANGEMENTS FOR THE SESSION** (Chairperson)
 - 3. IPHC PROCESS**
 - 3.1 Update on actions arising from the 96th Session of the IPHC Annual Meeting (AM096), 96th Session of the IPHC Interim Meeting (IM096), and 2020 Intersessional Decisions (D. Wilson)
 - 3.2 Report of the IPHC Secretariat (2020) (D. Wilson)
 - 3.3 2nd IPHC Performance Review (PRIPHC02): Implementation of recommendations (D. Wilson)
 - 4. STATE OF THE FISHERY (2020)** (L. Erikson)
 - 5. STOCK STATUS OF PACIFIC HALIBUT (2020) & HARVEST DECISION TABLE (2021)**
 - 5.1 IPHC Fishery-Independent Setline Survey (FISS) (2020) (L. Erikson)
 - 5.2 Space-time modelling of survey data and FISS designs for 2021-23 (R. Webster)
 - 5.3 Stock Assessment: Data overview and stock assessment (2020), and harvest decision table (2021) (I. Stewart)
 - 5.4 Pacific halibut mortality projections using the IPHC mortality projection tool (2021) (I. Stewart)
 - 5.5 Size limit review (I. Stewart)
 - 6. IPHC SCIENCE AND RESEARCH**
 - 6.1 IPHC 5-year Biological and Ecosystem Science Research Plan (2017-21): update (J. Planas)
 - 7. REPORT OF THE 21ST SESSION OF THE IPHC RESEARCH ADVISORY BOARD (RAB020)** (J. Planas)
 - 8. REPORTS OF THE IPHC SCIENTIFIC REVIEW BOARD** (S. Cox)
 - 9. MANAGEMENT STRATEGY EVALUATION**
 - 9.1 IPHC Management Strategy Evaluation: update (A. Hicks)
 - 9.2 Reports of the IPHC Management Strategy Advisory Board (A. Kaiser, R. Baker)
 - 10. IPHC FISHERY REGULATIONS: PROPOSALS FOR THE 2020-21 PROCESS**
 - 10.1 IPHC Secretariat fishery regulation proposals (L. Erikson)
 - 10.2 Contracting Party fishery regulation proposals (Contracting Parties)
 - 10.3 Other Stakeholder fishery regulation proposals (Stakeholders)
 - 10.4 Stakeholder statements (L. Erikson)
 - 11. CONTRACTING PARTY NATIONAL REPORTS**
 - 11.1 Canada (TBA)
 - 11.2 United States of America (TBA)
 - 12. PACIFIC HALIBUT FISHERY ECONOMICS UPDATE** (B. Hutniczak)
-



- 13. REPORT OF THE 97th SESSION OF THE IPHC FINANCE AND ADMINISTRATION COMMITTEE (FAC097) (D. Wilson)**
- 14. REPORT OF THE 91st SESSION OF THE IPHC CONFERENCE BOARD (CB091) (CB Co-Chairpersons)**
- 15. REPORT OF THE 26th SESSION OF THE IPHC PROCESSOR ADVISORY BOARD (PAB026) (PAB Chairperson)**
- 16. OTHER BUSINESS**
 - 16.1 IPHC meetings calendar (2021-23) (D. Wilson)
 - 16.2 Election of Chairperson and Vice-Chairperson for the next year (D. Wilson)
- 17. REVIEW OF THE DRAFT AND ADOPTION OF THE REPORT OF THE 97th SESSION OF THE IPHC ANNUAL MEETING (AM097) (Chairperson)**



APPENDIX III

LIST OF DOCUMENTS FOR THE 97TH SESSION OF THE IPHC ANNUAL MEETING (AM097)

Meeting documents	Title	Availability
IPHC-2021-AM097-01	Agenda & Schedule for the 97 th Session of the IPHC Annual Meeting (AM097)	✓ 27 Oct 2020 ✓ 22 Dec 2020 ✓ 05 Jan 2021
IPHC-2021-AM097-02	List of Documents for the 97 th Session of the IPHC Annual Meeting (AM097)	✓ 27 Oct 2020 ✓ 15 Dec 2020 ✓ 28 Jan 2021
IPHC-2021-AM097-03	Update on actions arising from the 96 th Session of the IPHC Annual Meeting (AM096), 96 th Session of the IPHC Interim Meeting (IM096) and 2020 Intersessional decisions (D. Wilson)	✓ 15 Dec 2020
IPHC-2021-AM097-04	Report of the IPHC Secretariat (2020) (D. Wilson, L. Erikson)	✓ 15 Dec 2020
IPHC-2021-AM097-05 Rev_1	State of the Fishery (2020) (L. Erikson & H. Tran)	✓ 17 Dec 2020 ✓ 08 Jan 2021
IPHC-2021-AM097-06	IPHC Fishery-Independent Setline Survey (FISS) design and implementation in 2020 (L. Erikson & K. Ualesi)	✓ 17 Dec 2020
IPHC-2021-AM097-07	Space-time modelling of survey data and FISS designs for 2021-23 (R. Webster)	✓ 22 Dec 2020
IPHC-2021-AM097-08	Stock Assessment: Summary of the data, stock assessment, and harvest decision table for Pacific halibut (<i>Hippoglossus stenolepis</i>) at the end of 2020 (I. Stewart, A. Hicks, R. Webster & D. Wilson)	✓ 15 Dec 2020
IPHC-2021-AM097-09	Evaluation of directed commercial fishery size limits in 2020 (I. Stewart, A. Hicks & B. Hutniczak)	✓ 15 Dec 2020
IPHC-2021-AM097-10	IPHC 5-year Biological and Ecosystem Science Research Plan (2017-21): update (J. Planas)	✓ 15 Dec 2020
IPHC-2021-AM097-11	IPHC Management Strategy Evaluation for Pacific halibut (<i>Hippoglossus stenolepis</i>) (A. Hicks, P. Carpi, I. Stewart & S. Berukoff)	✓ 18 Dec 2020
IPHC-2021-AM097-12 Rev_1	IPHC Fishery Regulations: Proposals for the 2020-21 process and associated implementation notes (D. Wilson & L. Erikson)	✓ 23 Dec 2020 ✓ 21 Jan 2021
IPHC-2021-AM097-13	Implementation of the recommendations from the 2 nd IPHC Performance Review (PRIPHC02) (D. Wilson)	✓ 15 Dec 2020



IPHC-2021-AM097-14	Pacific Halibut Multiregional Economic Impact Assessment (PHMEIA): summary of progress (B. Hutniczak)	✓ 22 Dec 2020
IPHC-2021-AM097-15 Rev_1	IPHC 3-year meetings calendar (2021-22) (IPHC Secretariat)	✓ 15 Dec 2020 ✓ 25 Jan 2021
<i>Contracting Party National Reports</i>		
IPHC-2021-AM097-NR01	National Report 2020: Canada	✓ 23 Dec 2020
IPHC-2021-AM097-NR02 Rev_1	National Report 2020: United States of America	✓ 23 Dec 2020 ✓ 11 Jan 2021
<i>Fishery Regulation proposals for 2021</i>		
<i>IPHC Secretariat fishery regulation proposals for 2021</i>		
IPHC-2021-AM097-PropA1	Mortality and Fishery Limits (Sect. 5) (IPHC Secretariat)	✓ 15 Dec 2020
IPHC-2021-AM097-PropA2	Commercial Fishing Periods (Sect. 9) (IPHC Secretariat)	✓ 15 Dec 2020
IPHC-2021-AM097-PropA3	IPHC Fishery Regulations: minor amendments (IPHC Secretariat)	✓ 16 Dec 2020
<i>Contracting Party fishery regulation proposals for 2021</i>		
IPHC-2021-AM097-PropB1	Charter Management Measures in IPHC Regulatory Areas 2C and 3A (Sect. 29) (USA: NOAA-Fisheries)	✓ 18 Dec 2020
<i>Other Stakeholder fishery regulation proposals for 2021</i>		
IPHC-2021-AM097-PropC1 Rev_1	Commercial Fishing Periods (Sect. 9) (W. Connor, R. Hauknes)	✓ 23 Dec 2020 ✓ 15 Jan 2021
<i>Information papers</i>		
IPHC-2021-AM097-INF01 Rev_1	Stakeholder statements on fishery regulation proposals for 2021 (IPHC Secretariat)	✓ 15 Jan 2021 ✓ 25 Jan 2021
IPHC-2021-AM097-INF02	The IPHC mortality projection tool for 2021 (and 2022) mortality limits (I. Stewart)	✓ 15 Dec 2020
IPHC-2021-AM097-INF03	The IPHC MSE Explorer tool (A. Hicks & P. Carpi)	✓ 15 Dec 2020
IPHC-2021-AM097-INF04 Rev_3	IPHC Financial Regulations (2021) - Draft (D. Wilson & K. Jernigan)	✓ 25 Jan 2021 ✓ 26 Jan 2021 ✓ 27 Jan 2021
IPHC-2021-AM097-INF05	Commercial Fisheries (Sect. 9) (USA: NOAA-Fisheries)	✓ 28 Jan 2021
<i>Reports from IPHC subsidiary bodies (2020/21)</i>		
IPHC-2020-RAB021-R	Report of the 21 st Session of the IPHC Research Advisory Board (RAB021)	✓ 27 Feb 2020



IPHC-2021-AM097-R

IPHC-2020-SRB016-R	Report of the 16 th Session of the IPHC Scientific Review Board (SRB016)	✓ 26 Jun 2020
IPHC-2020-SRB017-R	Report of the 17 th Session of the IPHC Scientific Review Board (SRB017)	✓ 25 Sept 2020
IPHC-2020-MSAB015-R	Report of the 15 th Session of the IPHC Management Strategy Advisory Board (MSAB015)	✓ 15 May 2020
IPHC-2020-MSAB016-R	Report of the 16 th Session of the IPHC Management Strategy Advisory Board (MSAB016)	✓ 23 Oct 2020
IPHC-2020-IM096-R	Report of the 96 th Session of the IPHC Interim Meeting (IM096)	✓ 02 Dec 2020
IPHC-2021-FAC097-R	Report of the 97 th Session of the IPHC Finance and Administration Committee (FAC097)	✓ 28 Jan 2021
IPHC-2021-CB091-R	Report of the 91 th Session of the IPHC Conference Board (CB091)	✓ 28 Jan 2021
IPHC-2021-PAB026-R	Report of the 26 th Session of the IPHC Processor Advisory Board (PAB026)	✓ 28 Jan 2021



APPENDIX IV
IPHC FISHERY REGULATIONS: MORTALITY AND FISHERY LIMITS (SECT. 5)

IPHC-2021-AM097-PropA1

(1) The Commission has adopted the following distributed mortality (TCEY) limits:

IPHC Regulatory Area	<i>Distributed mortality limits (TCEY) (net weight)</i>	
	Tonnes (t)	Million Pounds (Mlb)
Area 2A (California, Oregon, and Washington)	748	1.65
Area 2B (British Columbia)	3,175	7.00
Area 2C (southeastern Alaska)	2,631	5.80
Area 3A (central Gulf of Alaska)	6,350	14.00
Area 3B (western Gulf of Alaska)	1,415	3.12
Area 4A (eastern Aleutians)	930	2.05
Area 4B (central/western Aleutians)	635	1.40
Areas 4CDE (Bering Sea)	1,805	3.98
Total	17,690	39.00

(2) The fishery limits resulting from the IPHC-adopted distributed mortality (TCEY) limits and the existing Contracting Party catch sharing arrangements are as follows, recognizing that each Contracting Party may implement more restrictive limits:

IPHC Regulatory Area	<i>Fishery limits (net weight)</i>	
	Tonnes (t)	Million Pounds (Mlb)*
Area 2A (California, Oregon, and Washington)	685	1.51
Non-treaty directed commercial (south of Pt. Chehalis)	116	256,122*
Non-treaty incidental catch in salmon troll fishery	21	45,198*
Non-treaty incidental catch in sablefish fishery (north of Pt. Chehalis)	32	70,000*
Treaty Indian commercial	225	496,300*
Treaty Indian ceremonial and subsistence (year-round)	15	32,200*
Recreational – Washington	127	279,414*
Recreational – Oregon	132	291,506*
Recreational – California	18	39,260*
Area 2B (British Columbia)	2,790	6.15
Commercial fishery	2,372	5.23
Recreational fishery	417	0.92
Area 2C (southeastern Alaska) (combined commercial/guided recreational)	2,000	4.41
Commercial fishery (3.53-3.41 Mlb catch and 0.07-0.70 Mlb incidental mortality)	1,633	3.60



IPHC-2021-AM097-R

Guided recreational fishery (includes catch and incidental mortality)	367	0.81
Area 3A (central Gulf of Alaska) (combined commercial/guided recreational)	5,053	11.14
Commercial fishery (8.95-7.05 Milb catch and 0.24-0.29 Milb incidental mortality)	4,169	9.19
Guided recreational fishery (includes catch and incidental mortality)	885	1.95
Area 3B (western Gulf of Alaska)	1,161	2.56
Area 4A (eastern Aleutians)	753	1.66
Area 4B (central/western Aleutians)	558	1.23
Areas 4CDE	757	1.67
Area 4C (Pribilof Islands)	335	0.738
Area 4D (northwestern Bering Sea)	335	0.738
Area 4E (Bering Sea flats)	88	0.194
Total	13,757	30.33

* Allocations resulting from the IPHC Regulatory Area 2A Catch Share Plan are listed in *pounds*.



APPENDIX V
COMMERCIAL FISHING PERIODS (SECT. 9)

IPHC-2021-AM097-PropA2

- (2) Unless the Commission specifies otherwise, commercial fishing for Pacific halibut in all IPHC Regulatory Areas may begin no earlier in the year than 1200 local time on ~~6~~ 14-March.
- (3) All commercial fishing for Pacific halibut in all IPHC Regulatory Areas shall cease for the year at 1200 local time on ~~7 December. 15 November, with the exception of IPHC Regulatory Area 2B which shall cease at 1200 local time on 7 December 2020.~~

APPLICATION OF COMMERCIAL FISHERY LIMITS (SECT. 12)

- (3) Notwithstanding the fishery limits described in section 5, the commercial fishing in IPHC Regulatory Area 2B will close only when all Individual Vessel Quotas (IVQ) and Individual Transferable Quotas (ITQ) assigned by DFO are taken, or ~~15 November on the date when fishing must cease as specified in Section 9~~, whichever is earlier.
- (4) Notwithstanding the fishery limits described in section 5, IPHC Regulatory Areas 2C, 3A, 3B, 4A, 4B, 4C, 4D, and 4E will each close only when all Individual Fishing Quotas (IFQ) and all CDQ issued by NOAA Fisheries have been taken, or ~~15 November on the date when fishing must cease as specified in Section 9~~, whichever is earlier.



APPENDIX VI
SUPERVISION OF UNLOADING AND WEIGHING (SECT. 22)

IPHC-2021-AM097-PropA3

- (2) The unloading and weighing of Pacific halibut may be subject to sampling by an authorized representative of the Commission.



APPENDIX VII
RECREATIONAL (SPORT) FISHING FOR PACIFIC HALIBUT—IPHC REGULATORY AREAS
2C, 3A, 3B, 4A, 4B, 4C, 4D, 4E

IPHC-2021-AM097-PropB1

- (2) For guided recreational (sport) fishing (as referred to in 50 CFR 300.65) in IPHC Regulatory Area 2C:
- (b) No person on board a charter vessel (as referred to in 50 CFR 300.65) shall catch and retain any Pacific halibut that with head on is greater than ~~45-50~~ inches (~~114-127.0~~ cm) and less than ~~80-72~~ inches (~~203-182.9~~ cm) as measured in a straight line, passing over the pectoral fin from the tip of the lower jaw with mouth closed, to the extreme end of the middle of the tail.
- (3) For guided recreational (sport) fishing (as referred to in 50 CFR 300.65) in IPHC Regulatory Area 3A:
- (e) ~~No person on board a charter vessel may catch and retain Pacific halibut on any Wednesday.~~



APPENDIX VIII
COMMERCIAL FISHING PERIODS (SECT. 9)

IPHC-2021-AM097-INF05

- (4) The first fishing period in the IPHC Regulatory Area 2A non-tribal directed commercial fishery² shall begin at 0800 on the fourth ~~Monday-Tuesday~~ in June and terminate at 1800 local time on the subsequent ~~Wednesday-Thursday~~, unless the Commission specifies otherwise. If the Commission determines that the fishery limit specified for IPHC Regulatory Area 2A in Section 5 has not been exceeded, it may announce a second fishing period of up to three fishing days to begin on ~~Monday-Tuesday~~ two weeks after the first period, and, if necessary, a third fishing period of up to three fishing days to begin on ~~Wednesday-Tuesday~~ four weeks after the first period.



INTERNATIONAL PACIFIC
HALIBUT COMMISSION

IPHC-2021-AM097-R

APPENDIX IX
FY2022 PROPOSED BUDGET

(1 Oct. 2021 to 30 Sept. 2022)

Account Number	Account Name	FY2022				Total
		10 - General	30 - Statistics	20 - Research	40 - FISS	
Income						
40000	Contracting Party Contributions					
40000.01	Canada	\$ 945,427.35	\$ -	\$ -	\$ -	\$ 945,427.35
40000.02	United States of America	\$ 4,365,648.00	\$ -	\$ -	\$ -	\$ 4,365,648.00
	Total 40000 - Contracting Party Contributions	\$ 5,311,075.35	\$ -	\$ -	\$ -	\$ 5,311,075.35
40050	IFC Pension	\$ -	\$ -	\$ -	\$ -	\$ -
40050.01	IFC Pension - Canada	\$ 111,250.00	\$ -	\$ -	\$ -	\$ 111,250.00
40050.02	IFC Pension - United States of America	\$ 139,424.00	\$ -	\$ -	\$ -	\$ 139,424.00
	Total 40050 - IFC Pension	\$ 250,674.00	\$ -	\$ -	\$ -	\$ 250,674.00
40055	Headquarters (Lease & Maintenance)	\$ 475,000.00	\$ -	\$ -	\$ -	\$ 475,000.00
40060	Other Income	\$ -	\$ -	\$ -	\$ -	\$ -
40100	Grants, Contracts & Agreements	\$ -	\$ 559,975.00	\$ 87,809.40	\$ 48,720.00	\$ 696,504.40
40200	Interest Income	\$ -	\$ -	\$ -	\$ 11,550.00	\$ 11,550.00
40200.01	Bank Interest	\$ -	\$ -	\$ -	\$ -	\$ -
40200.02	CD Interest	\$ -	\$ -	\$ -	\$ -	\$ -
	Total 40200 - Interest Income	\$ 475,000.00	\$ 559,975.00	\$ 87,809.40	\$ 60,270.00	\$ 1,183,054.40
40350	Fish Sales	\$ -	\$ -	\$ -	\$ -	\$ -
40350.01	Fish Sales - Pacific Halibut	\$ -	\$ -	\$ -	\$ 5,471,025.00	\$ 5,471,025.00
40350.02	Fish Sales - Byproduct	\$ -	\$ -	\$ -	\$ 58,800.00	\$ 58,800.00
	Total 40350 - Fish Sales	\$ -	\$ -	\$ -	\$ 5,529,825.00	\$ 5,529,825.00
	Total Income	\$ 6,036,749.35	\$ 559,975.00	\$ 87,809.40	\$ 5,590,095.00	\$ 12,274,628.75

Account Number	Account Name	FY2022				Total
		10 - General	30 - Statistics	20 - Research	40 - FISS	
Expense						
Personnel Expenses						
50000	Salaries & Wages	\$ 3,085,442.85	\$ 668,115.00	\$ 33,075.00	\$ 478,584.75	\$ 4,265,217.60
50100	Benefits	\$ 1,382,459.40	\$ 199,552.50	\$ 13,230.00	\$ 14,837.55	\$ 1,610,079.45
50100.09	Medical Reimbursement - Retiree	\$ 102,217.50	\$ -	\$ -	\$ -	\$ 102,217.50
50200	Training & Education	\$ 4,200.00	\$ 22,050.00	\$ -	\$ 54,600.00	\$ 80,850.00
50300	Personnel Related Expenses	\$ -	\$ 10,001.00	\$ -	\$ 36,376.20	\$ 46,377.20
50300.01	Scholarship Awards	\$ 8,000.00	\$ -	\$ -	\$ -	\$ 8,000.00
	Total Personnel Expenses	\$ 4,582,319.75	\$ 899,718.50	\$ 46,305.00	\$ 584,398.50	\$ 6,112,741.75
Operational Expenses						
51000	Publications	\$ -	\$ 15,435.00	\$ 301.00	\$ -	\$ 15,736.00
51100	Mailing and Shipping	\$ 6,930.00	\$ 8,820.00	\$ -	\$ 79,800.00	\$ 95,550.00
51200	Travel	\$ 73,027.50	\$ 18,742.50	\$ 13,230.00	\$ 117,516.00	\$ 222,516.00
51300	Meeting and Conference Expenses	\$ 109,200.00	\$ -	\$ -	\$ -	\$ 109,200.00
51400	Technology	\$ 157,500.00	\$ -	\$ -	\$ -	\$ 157,500.00
	Total Operational Expenses	\$ 346,657.50	\$ 42,997.50	\$ 13,531.00	\$ 197,316.00	\$ 600,502.00
Fees and Contract Expenses						
52000	Professional Fees	\$ 141,487.50	\$ -	\$ -	\$ -	\$ 141,487.50
52200	Other Fees and Charges	\$ -	\$ -	\$ -	\$ 590,965.20	\$ 590,965.20
52300	Leases and Contracts	\$ 229,790.40	\$ 40,792.50	\$ 122,928.75	\$ 2,428,391.70	\$ 2,821,903.35
54000	Communications	\$ 6,384.00	\$ 441.00	\$ 11,025.00	\$ 86,782.50	\$ 104,632.50
	Total Fees and Contract Expenses	\$ 377,661.90	\$ 41,233.50	\$ 133,953.75	\$ 3,106,139.40	\$ 3,658,988.55
Facilities and Equipment Expenses						
53000	Equipment Expense	\$ 7,806.75	\$ 19,845.00	\$ 25,908.75	\$ 34,020.00	\$ 87,580.50
53100	Supplies Expense	\$ 4,707.15	\$ 2,205.00	\$ 147,000.00	\$ 933,980.25	\$ 1,087,892.40
53200	Maintenance and Utilities	\$ 195,551.55	\$ -	\$ -	\$ 42,000.00	\$ 237,551.55
53300	Facility Rentals	\$ 408,744.00	\$ 6,615.00	\$ -	\$ 21,000.00	\$ 436,359.00
	Total Facilities and Equipment Expenses	\$ 616,809.45	\$ 28,665.00	\$ 172,908.75	\$ 1,031,000.25	\$ 1,849,383.45
Other Expenses						
55000	Budget Contingency	\$ 53,013.00	\$ -	\$ -	\$ -	\$ 53,013.00
55200	Fund Cost Recovery (20 - 30)	\$ 731,528.60	\$ (452,639.50)	\$ (278,889.10)	\$ 671,240.85	\$ 671,240.85
55201	Fund Cost Recovery (40)	\$ (671,240.85)	\$ -	\$ -	\$ -	\$ (671,240.85)
	Total Other Expenses	\$ 113,300.75	\$ (452,639.50)	\$ (278,889.10)	\$ 671,240.85	\$ 53,013.00
	Total Expense	\$ 6,036,749.35	\$ 559,975.00	\$ 87,809.40	\$ 5,590,095.00	\$ 12,274,628.75
	Net Income (Loss)	\$ -	\$ -	\$ -	\$ -	\$ -



APPENDIX X
FY2023 INDICATIVE BUDGET

(1 Oct. 2022 to 30 Sept. 2023)

		FY2023				
Account Number	Account Name	10 - General	30 - Statistics	20 - Research	40 - FISS	Total
Income						
40000	Contracting Party Contributions					
40000.01	Canada	\$ 992,698.72	\$ -	\$ -	\$ -	\$ 992,698.72
40000.02	United States of America	\$ 4,583,930.40	\$ -	\$ -	\$ -	\$ 4,583,930.40
	Total 40000 - Contracting Party Contributions	\$ 5,576,629.12	\$ -	\$ -	\$ -	\$ 5,576,629.12
40050	IFC Pension	\$ -	\$ -	\$ -	\$ -	\$ -
40050.01	IFC Pension - Canada	\$ 111,250.00	\$ -	\$ -	\$ -	\$ 111,250.00
40050.02	IFC Pension - United States of America	\$ 139,424.00	\$ -	\$ -	\$ -	\$ 139,424.00
	Total 40050 - IFC Pension	\$ 250,674.00	\$ -	\$ -	\$ -	\$ 250,674.00
40055	Headquarters (Lease & Maintenance)	\$ 480,000.00	\$ -	\$ -	\$ -	\$ 480,000.00
40060	Other Income	\$ -	\$ -	\$ -	\$ -	\$ -
40100	Grants, Contracts & Agreements	\$ -	\$ 576,775.00	\$ 92,199.87	\$ 51,156.00	\$ 720,130.87
40200	Interest Income	\$ -	\$ -	\$ -	\$ 12,127.50	\$ 12,127.50
40200.01	Bank Interest	\$ -	\$ -	\$ -	\$ -	\$ -
40200.02	CD Interest	\$ -	\$ -	\$ -	\$ -	\$ -
	Total 40200 - Interest Income	\$ 480,000.00	\$ 576,775.00	\$ 92,199.87	\$ 63,283.50	\$ 1,212,258.37
40350	Fish Sales	\$ -	\$ -	\$ -	\$ -	\$ -
40350.01	Fish Sales - Pacific Halibut	\$ -	\$ -	\$ -	\$ 5,744,576.25	\$ 5,744,576.25
40350.02	Fish Sales - Byproduct	\$ -	\$ -	\$ -	\$ 61,740.00	\$ 61,740.00
	Total 40350 - Fish Sales	\$ -	\$ -	\$ -	\$ 5,806,316.25	\$ 5,806,316.25
	Total Income	\$ 6,307,303.12	\$ 576,775.00	\$ 92,199.87	\$ 5,869,599.75	\$ 12,845,877.74
Expense						
Personnel Expenses						
50000	Salaries & Wages	\$ 3,239,714.99	\$ 701,520.75	\$ 34,728.75	\$ 502,513.99	\$ 4,478,478.48
50100	Benefits	\$ 1,451,582.37	\$ 209,530.13	\$ 13,891.50	\$ 15,579.43	\$ 1,690,583.42
50100.09	Medical Reimbursement - Retiree	\$ 107,328.38	\$ -	\$ -	\$ -	\$ 107,328.38
50200	Training & Education	\$ 4,410.00	\$ 23,152.50	\$ -	\$ 57,330.00	\$ 84,892.50
50300	Personnel Related Expenses	\$ -	\$ 10,002.00	\$ -	\$ 38,195.01	\$ 48,197.01
50300.01	Scholarship Awards	\$ 8,000.00	\$ -	\$ -	\$ -	\$ 8,000.00
	Total Personnel Expenses	\$ 4,811,035.74	\$ 944,205.38	\$ 48,620.25	\$ 613,618.43	\$ 6,417,479.79
Operational Expenses						
51000	Publications	\$ -	\$ 16,206.75	\$ 302.00	\$ -	\$ 16,508.75
51100	Mailing and Shipping	\$ 7,276.50	\$ 9,261.00	\$ -	\$ 83,790.00	\$ 100,327.50
51200	Travel	\$ 76,678.88	\$ 19,679.63	\$ 13,891.50	\$ 123,391.80	\$ 233,641.80
51300	Meeting and Conference Expenses	\$ 114,660.00	\$ -	\$ -	\$ -	\$ 114,660.00
51400	Technology	\$ 165,375.00	\$ -	\$ -	\$ -	\$ 165,375.00
	Total Operational Expenses	\$ 363,990.38	\$ 45,147.38	\$ 14,193.50	\$ 207,181.80	\$ 630,513.05
Fees and Contract Expenses						
52000	Professional Fees	\$ 148,561.88	\$ -	\$ -	\$ -	\$ 148,561.88
52200	Other Fees and Charges	\$ -	\$ -	\$ -	\$ 620,513.46	\$ 620,513.46
52300	Leases and Contracts	\$ 241,279.92	\$ 42,832.13	\$ 129,075.19	\$ 2,549,811.29	\$ 2,962,998.52
54000	Communications	\$ 6,703.20	\$ 463.05	\$ 11,576.25	\$ 91,121.63	\$ 109,864.13
	Total Fees and Contract Expenses	\$ 396,545.00	\$ 43,295.18	\$ 140,651.44	\$ 3,261,446.37	\$ 3,841,937.98
Facilities and Equipment Expenses						
53000	Equipment Expense	\$ 8,197.09	\$ 20,837.25	\$ 27,204.19	\$ 35,721.00	\$ 91,959.53
53100	Supplies Expense	\$ 4,942.51	\$ 2,315.25	\$ 154,350.00	\$ 980,679.26	\$ 1,142,287.02
53200	Maintenance and Utilities	\$ 163,246.68	\$ -	\$ -	\$ 44,100.00	\$ 207,346.68
53300	Facility Rentals	\$ 429,181.20	\$ 6,945.75	\$ -	\$ 22,050.00	\$ 458,176.95
	Total Facilities and Equipment Expenses	\$ 605,567.47	\$ 30,098.25	\$ 181,554.19	\$ 1,082,550.26	\$ 1,899,770.17
Other Expenses						
55000	Budget Contingency	\$ 56,176.75	\$ -	\$ -	\$ -	\$ 56,176.75
55200	Fund Cost Recovery (20 - 30)	\$ 778,790.68	\$ (485,971.18)	\$ (292,819.51)	\$ 704,802.89	\$ 704,802.89
55201	Fund Cost Recovery (40)	\$ (704,802.89)	\$ -	\$ -	\$ -	\$ (704,802.89)
	Total Other Expenses	\$ 130,164.54	\$ (485,971.18)	\$ (292,819.51)	\$ 704,802.89	\$ 56,176.75
	Total Expense	\$ 6,307,303.12	\$ 576,775.00	\$ 92,199.87	\$ 5,869,599.75	\$ 12,845,877.74
	Net Income (Loss)	\$ -	\$ -	\$ -	\$ -	\$ -



APPENDIX XI
FY2024 INDICATIVE BUDGET

(1 Oct. 2023 to 30 Sept. 2024)

Account Number	Account Name	FY2024				Total
		10 - General	30 - Statistics	20 - Research	40 - FISS	
Income						
40000	Contracting Party Contributions					
40000.01	Canada	\$ 1,042,333.65	\$ -	\$ -	\$ -	\$ 1,042,333.65
40000.02	United States of America	\$ 4,813,126.92	\$ -	\$ -	\$ -	\$ 4,813,126.92
	Total 40000 - Contracting Party Contributions	\$ 5,855,460.57	\$ -	\$ -	\$ -	\$ 5,855,460.57
40050	IFC Pension	\$ -	\$ -	\$ -	\$ -	\$ -
40050.01	IFC Pension - Canada	\$ 111,250.00	\$ -	\$ -	\$ -	\$ 111,250.00
40050.02	IFC Pension - United States of America	\$ 139,424.00	\$ -	\$ -	\$ -	\$ 139,424.00
	Total 40050 - IFC Pension	\$ 250,674.00	\$ -	\$ -	\$ -	\$ 250,674.00
40055	Headquarters (Lease & Maintenance)	\$ 497,000.00	\$ -	\$ -	\$ -	\$ 497,000.00
40060	Other Income	\$ -	\$ -	\$ -	\$ -	\$ -
40100	Grants, Contracts & Agreements	\$ -	\$ 594,078.00	\$ 96,809.86	\$ 53,713.80	\$ 744,601.66
40200	Interest Income	\$ -	\$ -	\$ -	\$ 12,733.88	\$ 12,733.88
40200.01	Bank Interest	\$ -	\$ -	\$ -	\$ -	\$ -
40200.02	CD Interest	\$ -	\$ -	\$ -	\$ -	\$ -
	Total 40200 - Interest Income	\$ 497,000.00	\$ 594,078.00	\$ 96,809.86	\$ 66,447.68	\$ 1,254,335.54
40350	Fish Sales	\$ -	\$ -	\$ -	\$ -	\$ -
40350.01	Fish Sales - Pacific Halibut	\$ -	\$ -	\$ -	\$ 6,031,805.06	\$ 6,031,805.06
40350.02	Fish Sales - Byproduct	\$ -	\$ -	\$ -	\$ 64,827.00	\$ 64,827.00
	Total 40350 - Fish Sales	\$ -	\$ -	\$ -	\$ 6,096,632.06	\$ 6,096,632.06
	Total Income	\$ 6,603,134.57	\$ 594,078.00	\$ 96,809.86	\$ 6,163,079.74	\$ 13,457,102.17

Account Number	Account Name	FY2024				Total
		10 - General	30 - Statistics	20 - Research	40 - FISS	
Expense						
Personnel Expenses						
50000	Salaries & Wages	\$ 3,401,700.74	\$ 736,596.79	\$ 36,465.19	\$ 527,639.69	\$ 4,702,402.40
50100	Benefits	\$ 1,524,161.49	\$ 220,006.63	\$ 14,586.08	\$ 16,358.40	\$ 1,775,112.59
50100.09	Medical Reimbursement - Retiree	\$ 112,694.79	\$ -	\$ -	\$ -	\$ 112,694.79
50200	Training & Education	\$ 4,630.50	\$ 24,310.13	\$ -	\$ 60,196.50	\$ 89,137.13
50300	Personnel Related Expenses	\$ -	\$ 10,003.00	\$ -	\$ 40,104.76	\$ 50,107.76
50300.01	Scholarship Awards	\$ 8,000.00	\$ -	\$ -	\$ -	\$ 8,000.00
	Total Personnel Expenses	\$ 5,051,187.52	\$ 990,916.54	\$ 51,051.26	\$ 644,299.35	\$ 6,737,454.68
Operational Expenses						
51000	Publications	\$ -	\$ 17,017.09	\$ 303.00	\$ -	\$ 17,320.09
51100	Mailing and Shipping	\$ 7,640.33	\$ 9,724.05	\$ -	\$ 87,979.50	\$ 105,343.88
51200	Travel	\$ 80,512.82	\$ 20,663.61	\$ 14,586.08	\$ 129,561.39	\$ 245,323.89
51300	Meeting and Conference Expenses	\$ 120,393.00	\$ -	\$ -	\$ -	\$ 120,393.00
51400	Technology	\$ 173,643.75	\$ -	\$ -	\$ -	\$ 173,643.75
	Total Operational Expenses	\$ 382,189.89	\$ 47,404.74	\$ 14,889.08	\$ 217,540.89	\$ 662,024.60
Fees and Contract Expenses						
52000	Professional Fees	\$ 155,989.97	\$ -	\$ -	\$ -	\$ 155,989.97
52200	Other Fees and Charges	\$ -	\$ -	\$ -	\$ 651,539.13	\$ 651,539.13
52300	Leases and Contracts	\$ 253,343.92	\$ 44,973.73	\$ 135,528.95	\$ 2,677,301.85	\$ 3,111,148.44
54000	Communications	\$ 7,038.36	\$ 486.20	\$ 12,155.06	\$ 95,677.71	\$ 115,357.33
	Total Fees and Contract Expenses	\$ 416,372.24	\$ 45,459.93	\$ 147,684.01	\$ 3,424,518.69	\$ 4,034,034.88
Facilities and Equipment Expenses						
53000	Equipment Expense	\$ 8,606.94	\$ 21,879.11	\$ 28,564.40	\$ 37,507.05	\$ 96,557.50
53100	Supplies Expense	\$ 5,189.63	\$ 2,431.01	\$ 162,067.50	\$ 1,029,713.23	\$ 1,199,401.37
53200	Maintenance and Utilities	\$ 140,739.56	\$ -	\$ -	\$ 46,305.00	\$ 187,044.56
53300	Facility Rentals	\$ 450,640.26	\$ 7,293.04	\$ -	\$ 23,152.50	\$ 481,085.80
	Total Facilities and Equipment Expenses	\$ 605,176.40	\$ 31,603.16	\$ 190,631.90	\$ 1,136,677.78	\$ 1,964,089.23
Other Expenses						
55000	Budget Contingency	\$ 59,498.79	\$ -	\$ -	\$ -	\$ 59,498.79
55200	Fund Cost Recovery (20 - 30)	\$ 828,752.76	\$ (521,306.38)	\$ (307,446.38)	\$ 740,043.04	\$ 740,043.04
55201	Fund Cost Recovery (40)	\$ (740,043.04)	\$ -	\$ -	\$ -	\$ (740,043.04)
	Total Other Expenses	\$ 148,208.51	\$ (521,306.38)	\$ (307,446.38)	\$ 740,043.04	\$ 59,498.79
	Total Expense	\$ 6,603,134.57	\$ 594,078.00	\$ 96,809.86	\$ 6,163,079.74	\$ 13,457,102.17
	Net Income (Loss)	\$ 0.00	\$ (0.00)	\$ (0.00)	\$ -	\$ (0.00)



APPENDIX XII

CONSOLIDATED SET OF RECOMMENDATIONS AND REQUESTS OF THE 97TH SESSION OF THE IPHC ANNUAL MEETING (AM097) (25-29 JANUARY 2021)

RECOMMENDATIONS

Commercial Fishing Period

AM097–Rec.01 ([para. 87](#)) The Commission **RECOMMENDED** that further consultations between Contracting Parties and fishery stakeholders on the administrative and policy implications of a year round fishery would support the decision process for the 98th Session of the IPHC Annual Meeting (AM098; January 2022) on potential further extensions of the direct commercial fishing period.

REQUESTS

IPHC Fishery-Independent Setline Survey (FISS)

AM097–Req.01 ([para. 27](#)) The Commission **REQUESTED** that the IPHC Secretariat coordinate with Contracting Parties to develop a Memorandum of Understanding (MOU) to promote data sharing among the IPHC Secretariat and Contracting Parties at no additional cost to the Contracting Parties.

Management Strategy Evaluation

AM097–Req.02 ([para. 70](#)) The Commission **REQUESTED** that the IPHC Secretariat consider and develop a draft MSE Program of Work for review by the Commission. The MSE Program of Work should describe technical versus policy-oriented issues, linkages between/among specific work products, and sequencing considerations between/among items. The MSE Program of Work should describe the resources required to complete items.

IPHC Fishery Regulations: Mortality and Fishery Limits (Sect. 5)

AM097–Req.03 ([para. 75](#)) The Commission **REQUESTED** additional information on the management and data collection procedures used in the unguided recreational fishery in IPHC Regulatory Areas 2C and 3A, and for these to be presented to the Commission no later than the next Interim Meeting of the Commission.

Pacific halibut fishery economics update

AM097–Req.04 ([para. 94](#)) The Commission **REQUESTED** that the IPHC Secretariat develop and distribute a Media Release on the Fishery economic project and the associated economic survey for industry to complete.

IPHC Financial Regulations (2021)

AM097–Req.05 ([para. 104](#)) The Commission **ENDORSED** and **ADOPTED** the IPHC Financial Regulations (2021) as provided in paper [IPHC-2021-AM097-INF04 Rev 3](#) by consensus, and **REQUESTED** that the IPHC Secretariat finalise and publish them accordingly.

AM097–Req.06 ([para. 105](#)) The Commission **REQUESTED** that the IPHC Secretariat will undertake an inter-sessional review and recommend further improvements to the Financial Regulations of the Commission, including the basis of accounting to better align with GAAP standards while maintaining regulatory compliance.



IPHC Rules of Procedure (2021)

AM097–Req.07 ([para. 106](#)) The Commission **ADOPTED** the IPHC Rules of Procedure (2021), as provided in [IPHC-2021-FAC097-09](#) by consensus, and **REQUESTED** that the IPHC Secretariat finalise and publish them accordingly.

AM097–Req.08 ([para. 107](#)) The Commission **REQUESTED** that the IPHC Secretariat undertake an inter-sessional review and recommend further improvements to the IPHC Rules of Procedure to the Commission, noting the CB’s recommendation (to change when Chairs are elected in their rule), PAB noting the conflicting text in the Rules, and roles of the Commissions Secretariat.

Review of the draft and adoption of the report of the 97th Session of the IPHC Annual Meeting (AM097)

AM097–Req.09 ([para. 122](#)) The Commission **REQUESTED** that the IPHC Secretariat finalise and publish the *IPHC Pacific Halibut Fishery Regulations (2021)* as soon as possible, **NOTING** that only minor editorial and formatting changes are permitted beyond the decisions made by the Commission at the AM097.