

2017/18 BSAI crab catch and fishery performance

Benjamin Daly
Crab Plan Team Meeting
September 10-13, 2018
Seattle, WA

180° 178° W 176° W 174° W 172° W 170° W 168° W 166° W 164° W 162° W 160° W 158° W

- Confidentiality restrictions for AIGKC and PribGKC
- Showing stat areas with 3+ vessel participation

2017/18

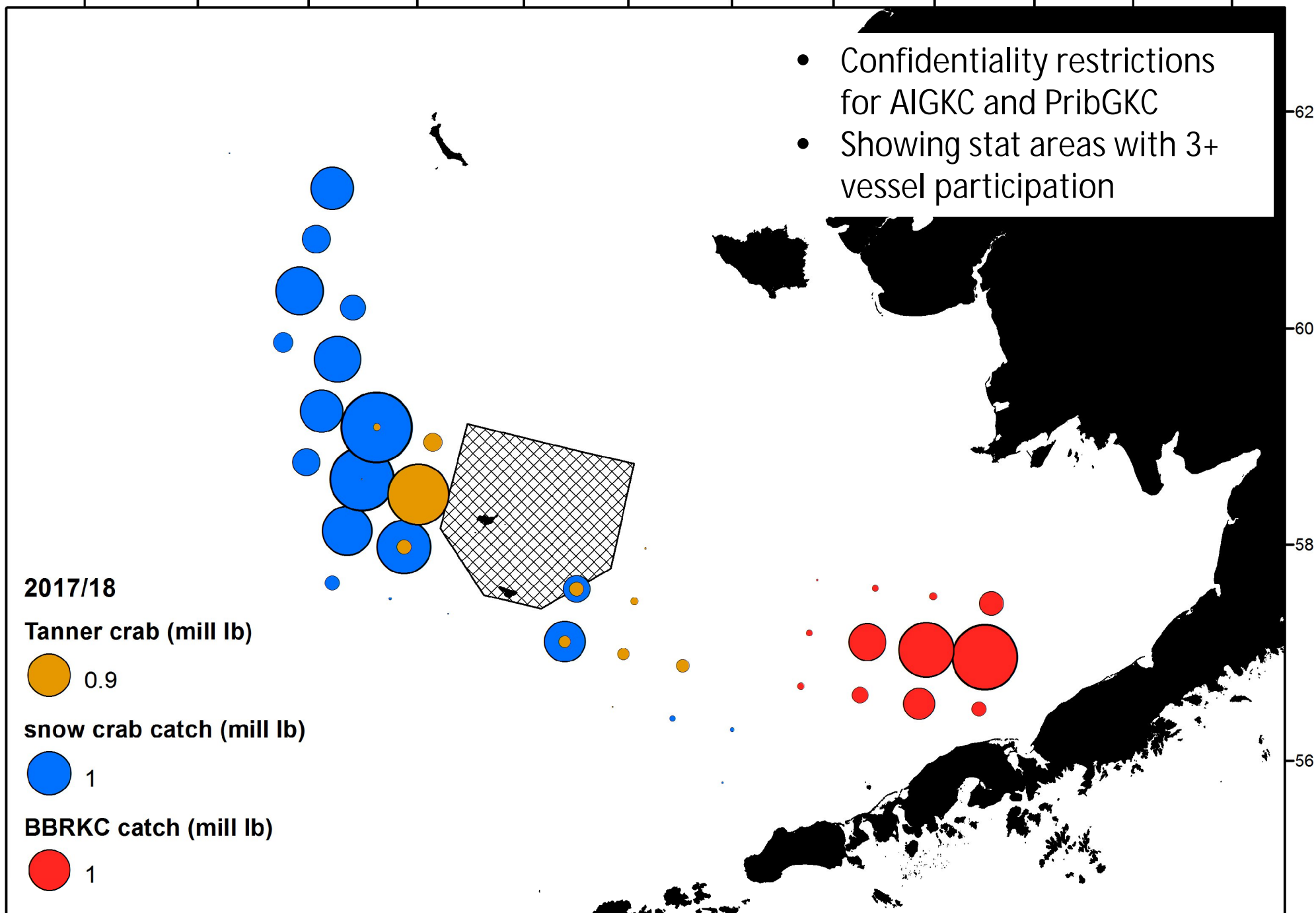
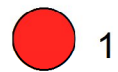
Tanner crab (mill lb)



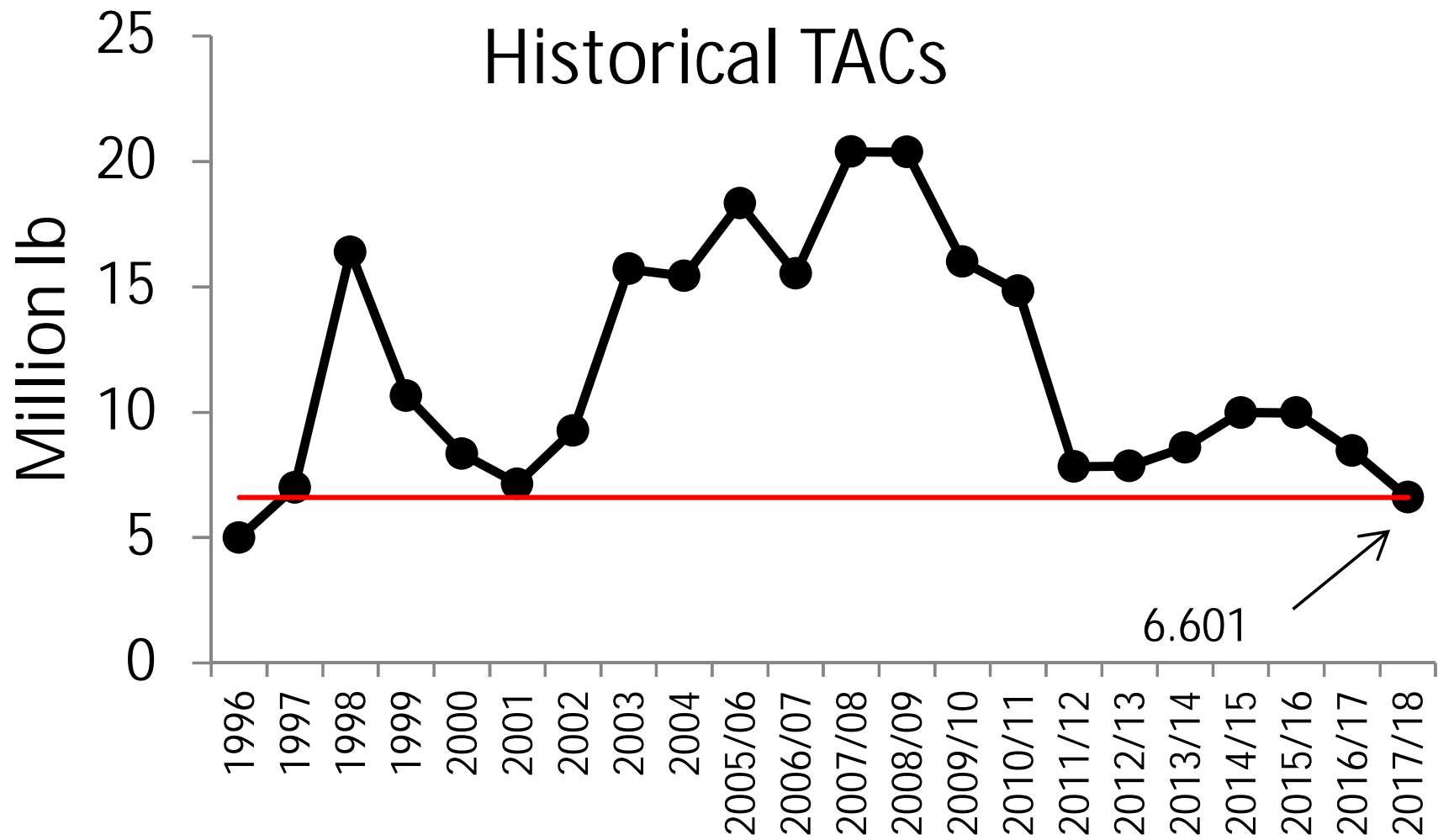
snow crab catch (mill lb)



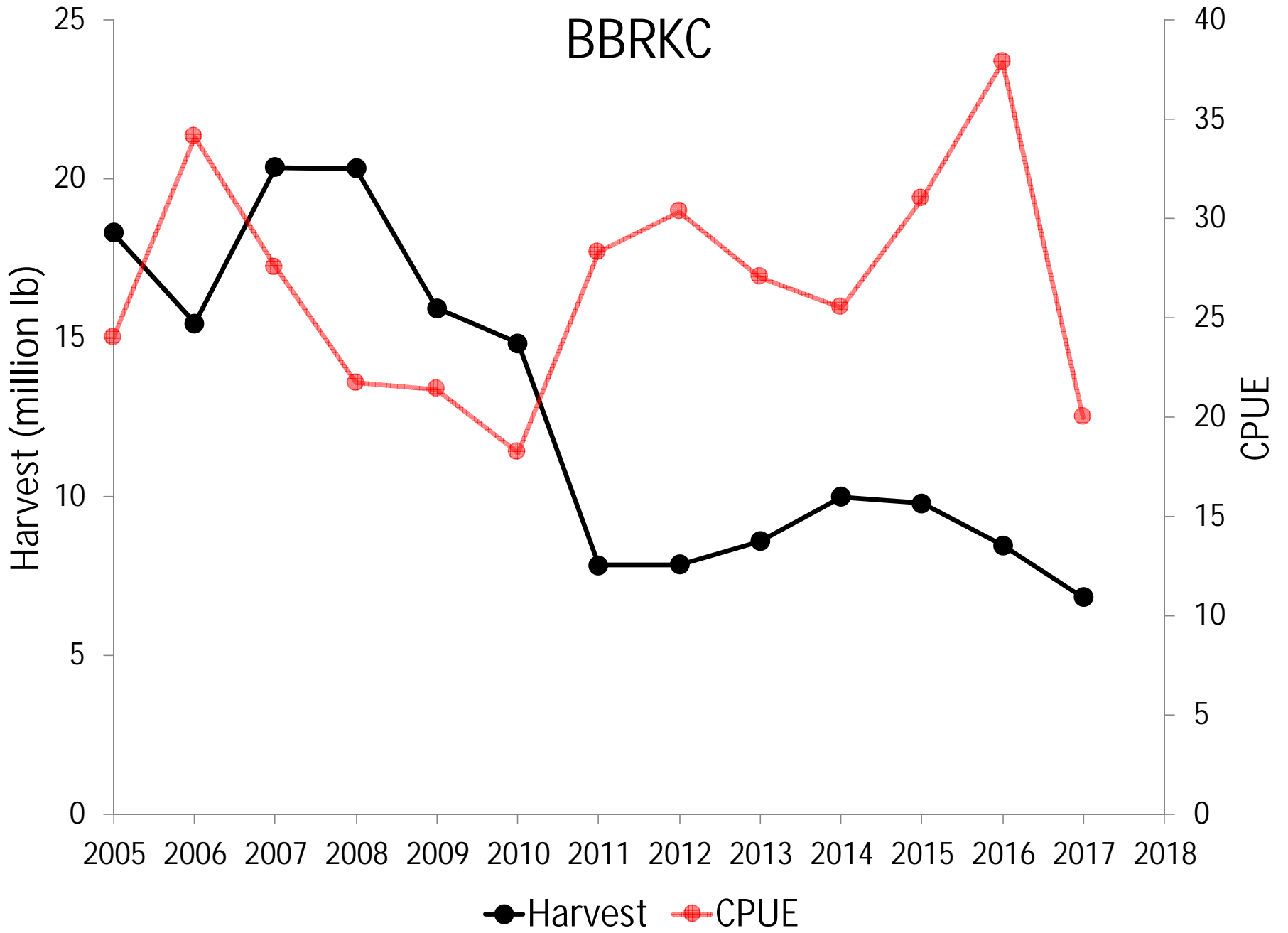
BBRKC catch (mill lb)

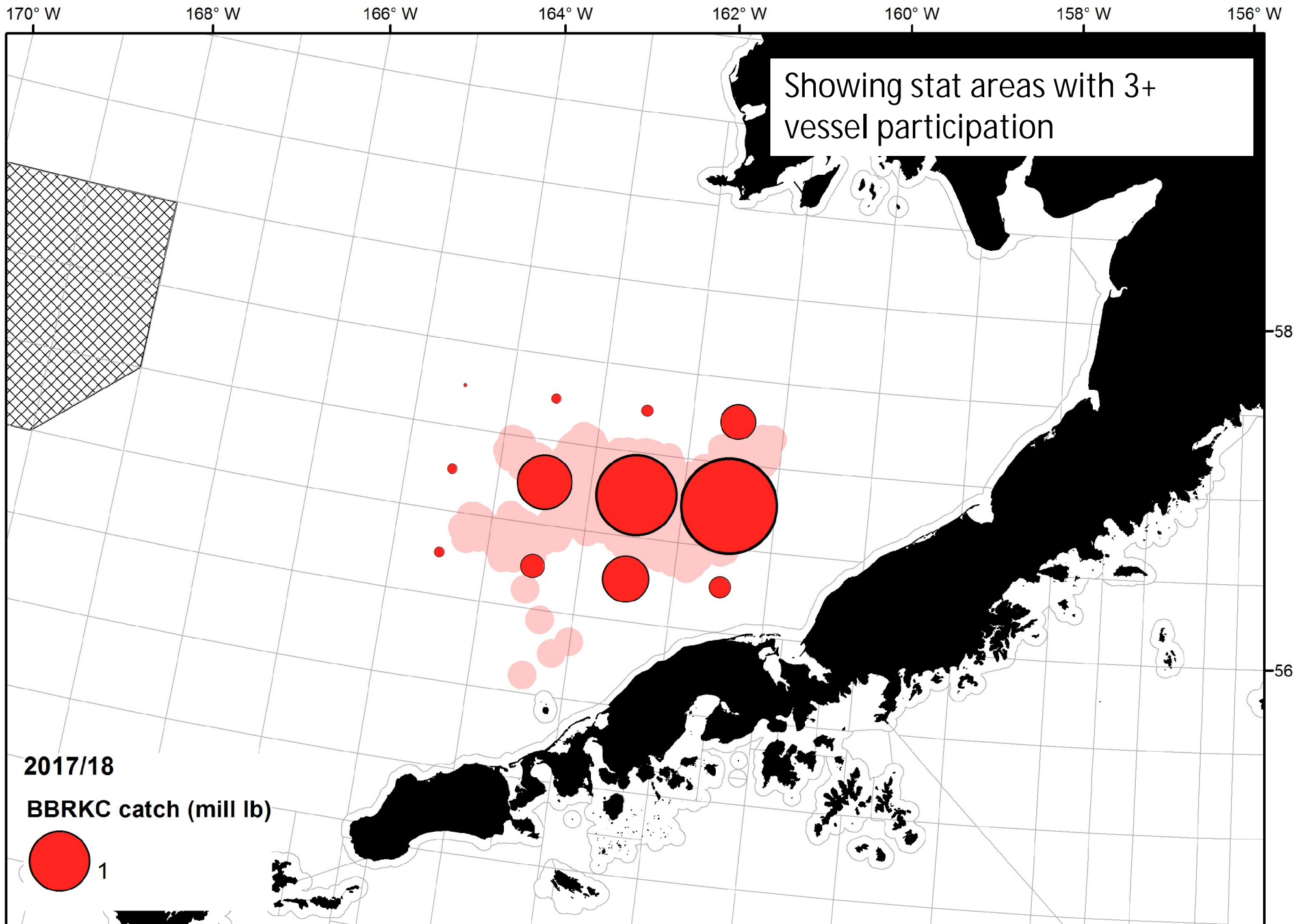


BBRKC



BBRKC





2017/18 BBRKC Observations

- Captains reported one “school” of fast-moving crab on the grounds.
- Vessels would stay on top of the “school” to mark it and call in other vessels to area (radio fishing).
- Majority of vessels did not locate crab in their first sets (spots that were good fishing the year before) and had to immediately move gear and prospect other areas.
- One vessel, C/P Baranof, did not fish until January, CPUE was very low
- Observer CPUE (crab/pot)

Min – 0.4

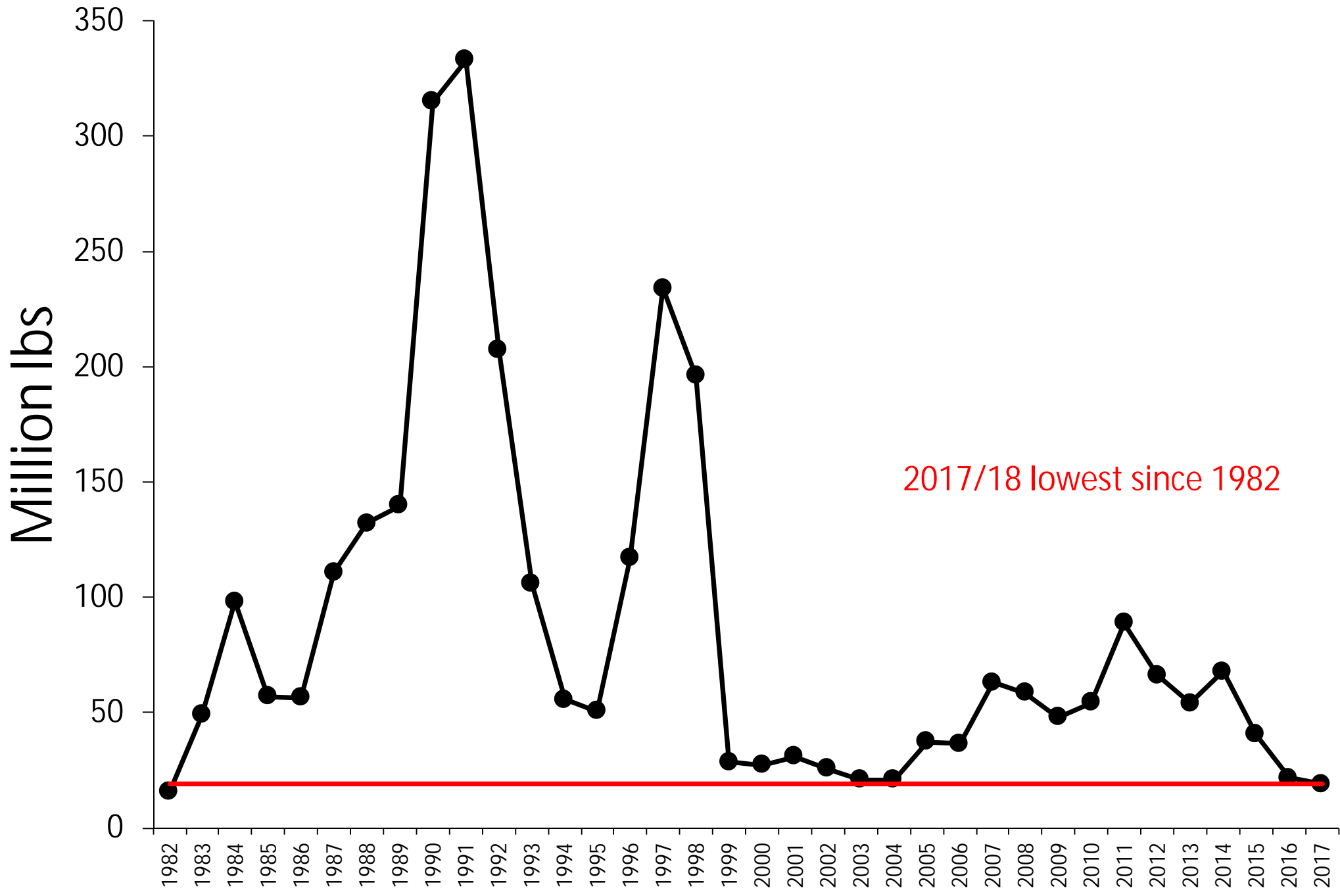
Max – 47

Avg – 17.2

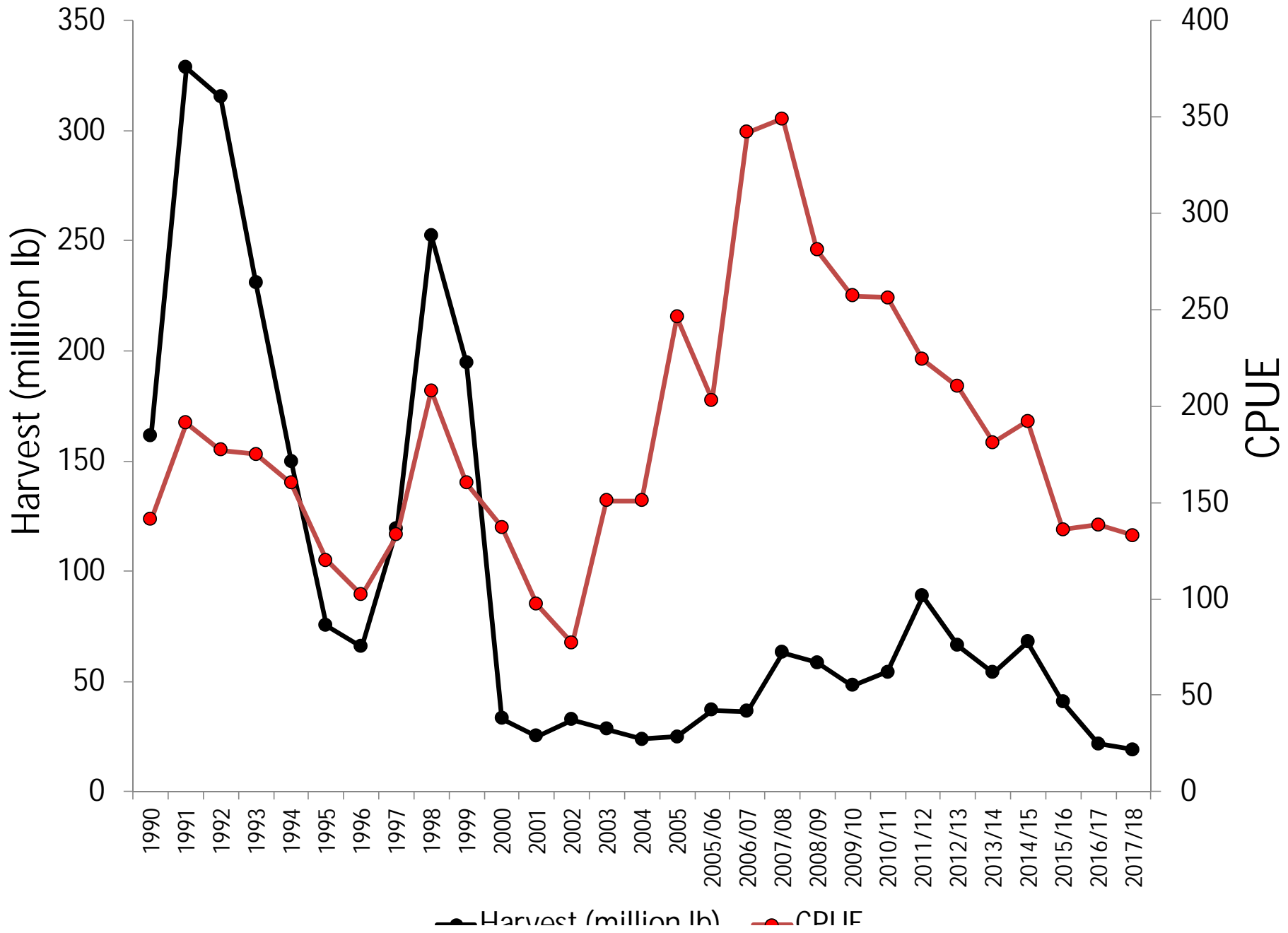
StDv – 9.9

Snow crab

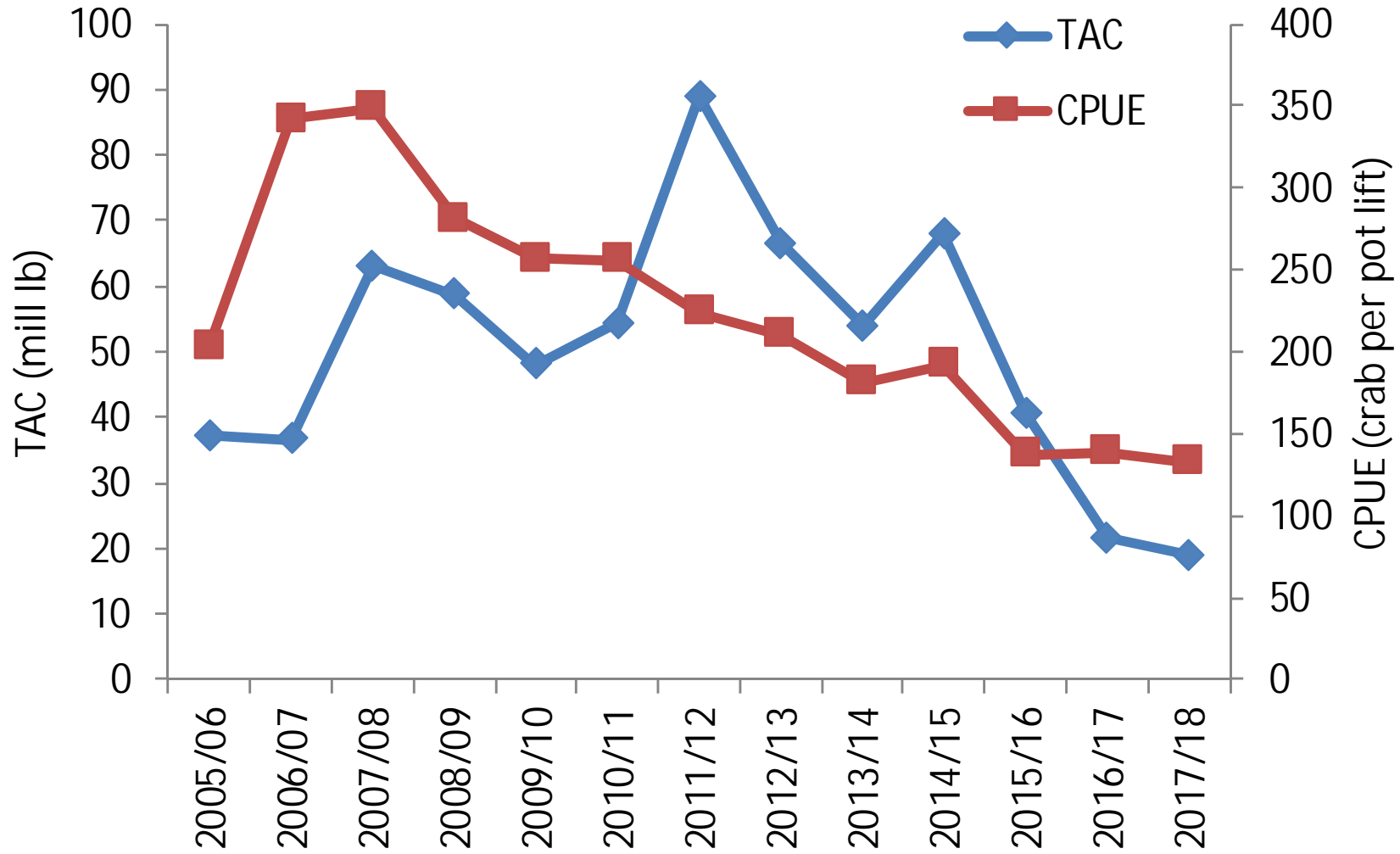
Historical TACs



Snow crab

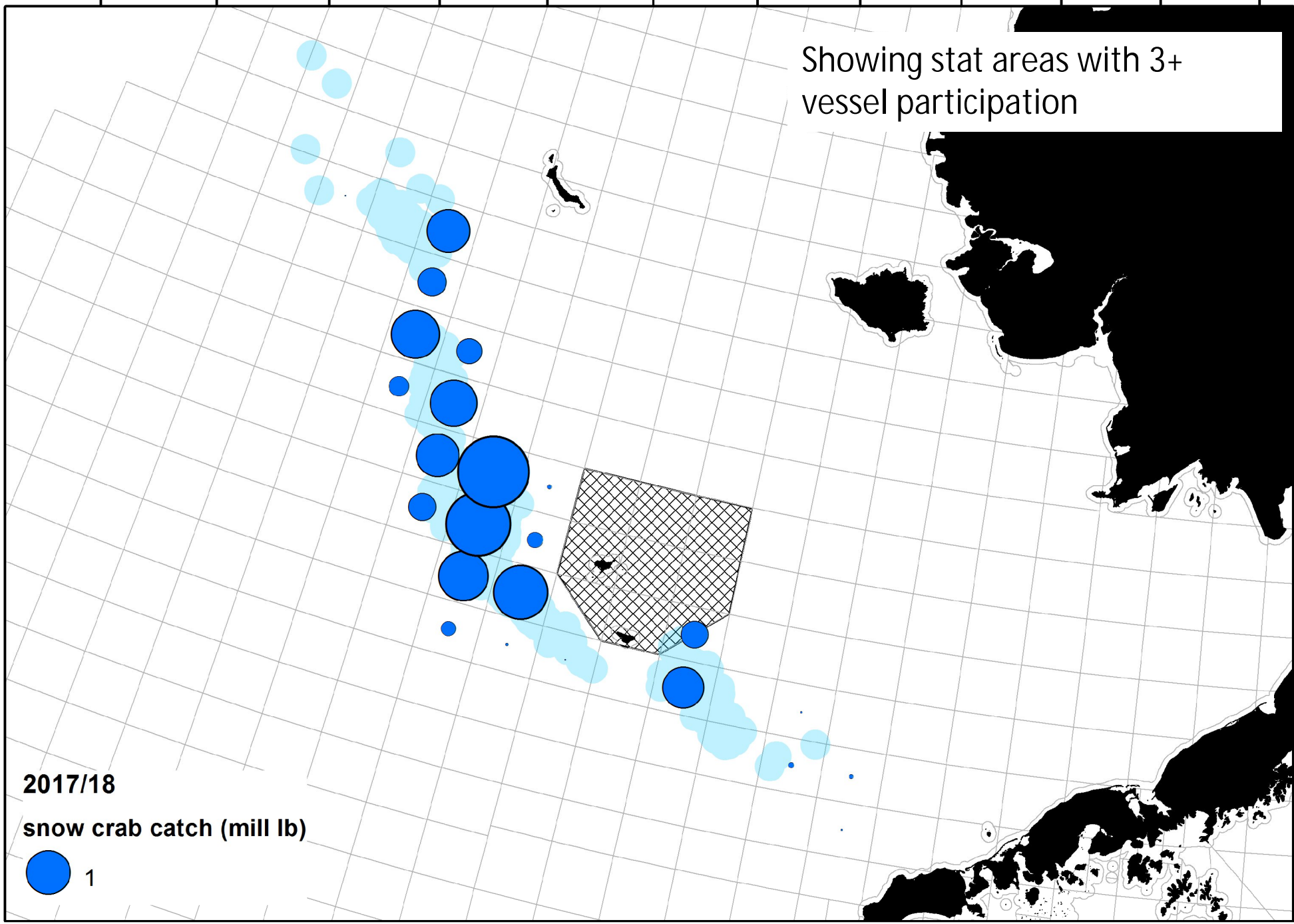


Snow crab



178° E 180° 178° W 176° W 174° W 172° W 170° W 168° W 166° W 164° W 162° W 160° W

Showing stat areas with 3+ vessel participation



62

60

58

56

2017/18 BSS Observations

- Large disparity between individual fishing vessel performance.
- Fleet was split between traditional opilio grounds S/SW of the Pribilof's and much farther north to an area SW of Saint Matthew Island (SMI).
- Fishing SW of SMI produced strong numbers while the other opilio grounds were spotty and inconsistent.
- Sea ice was not an issue, but frequent powerful storms and the long run-time limited the number of vessels capable of fishing SW of SMI.
- Captains fishing up north reported some of the best opilio fishing in a long time, while others (S/SW of Pribilof's) reported the worst fishing they had ever seen.
- Observer CPUE (crab/pot)

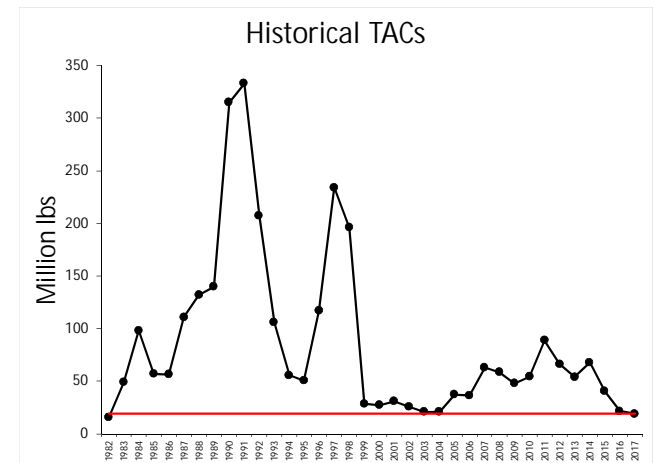
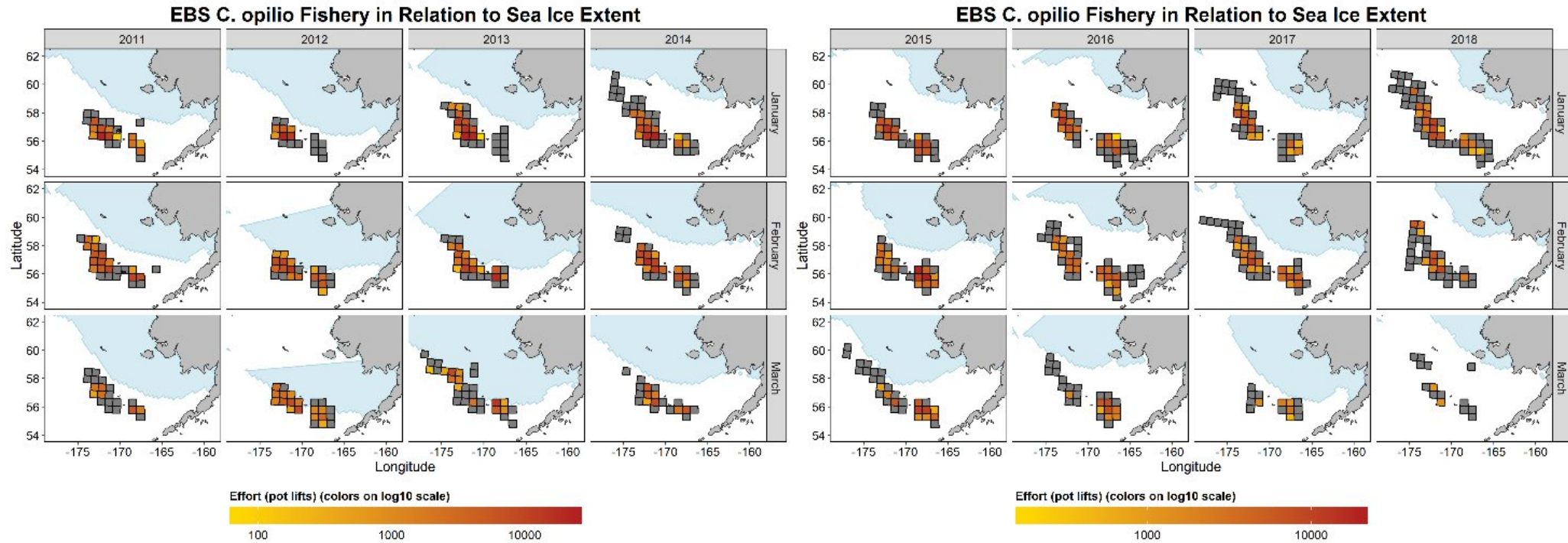
Min – 0.40

Max – 368.8

Avg – 125.6

StDv – 84.3

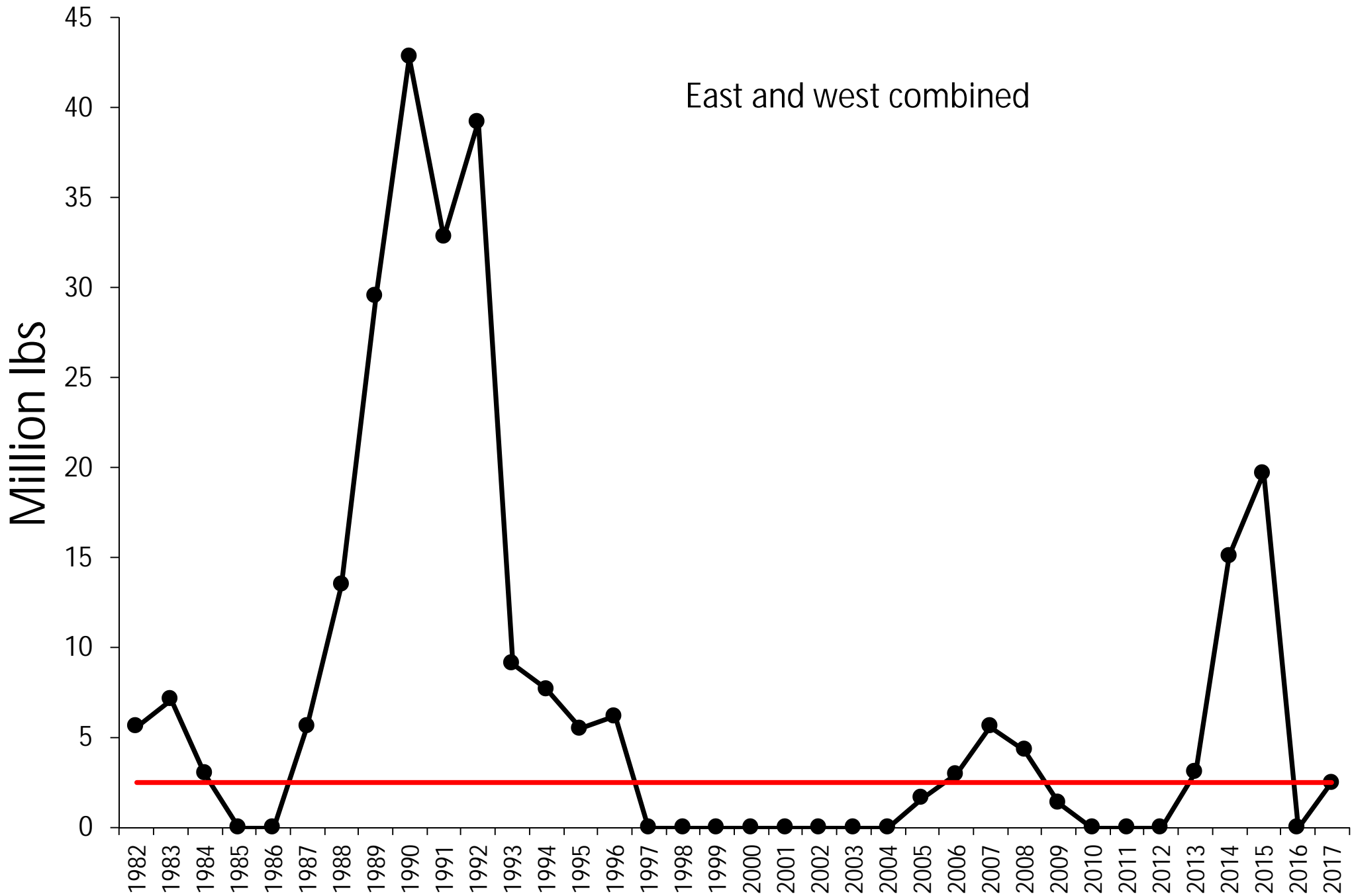
Fishery effort and sea ice



Maps prepared by Tyler Jackson, ADF&G, Kodiak
 Sea ice data: NOAA/University of Colorado
<ftp://sidads.colorado.edu/DATASETS/NOAA/G02135/>

Tanner crab

Historical TACs



176° W

174° W

172° W

170° W

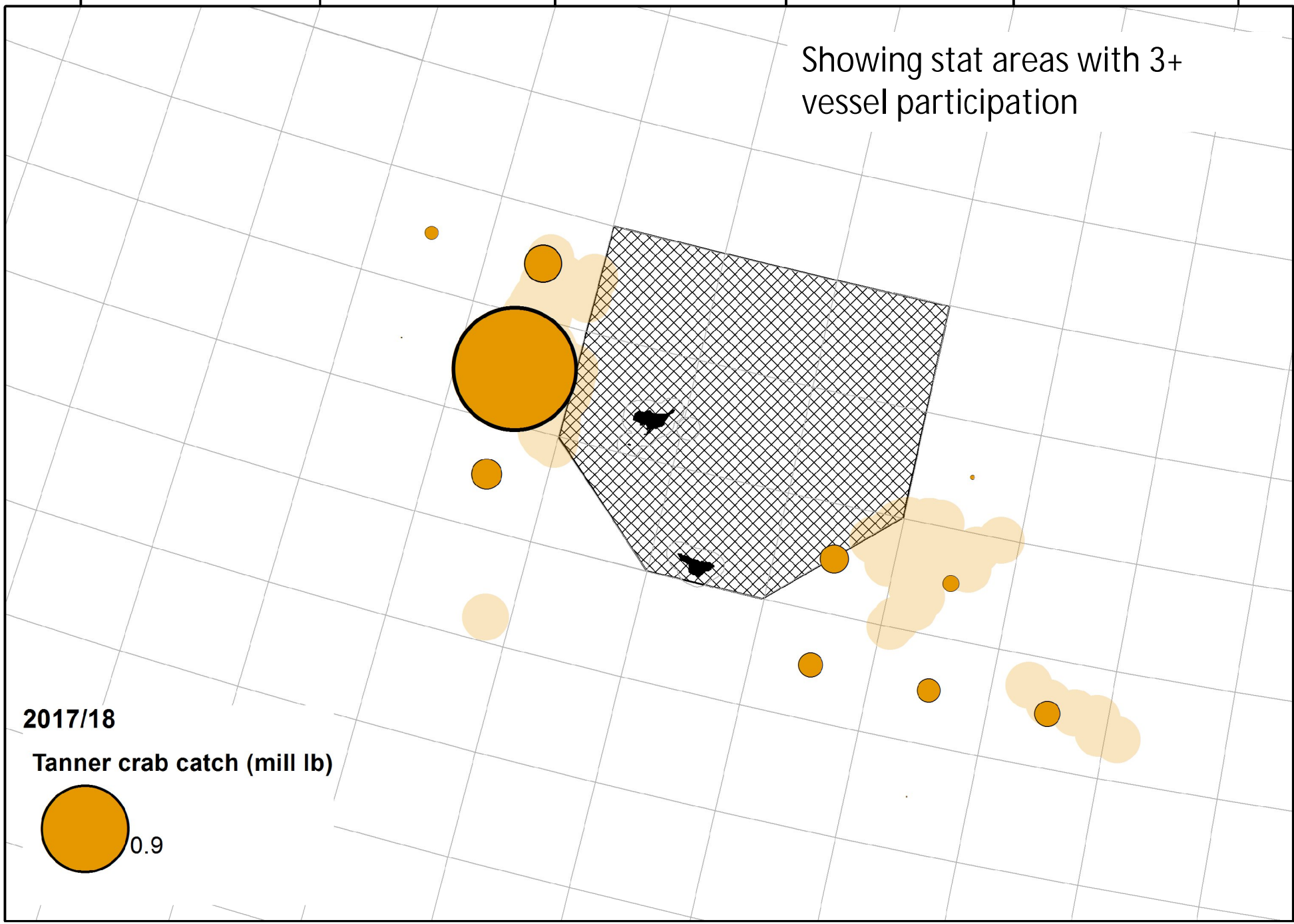
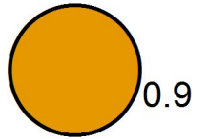
168° W

166° W

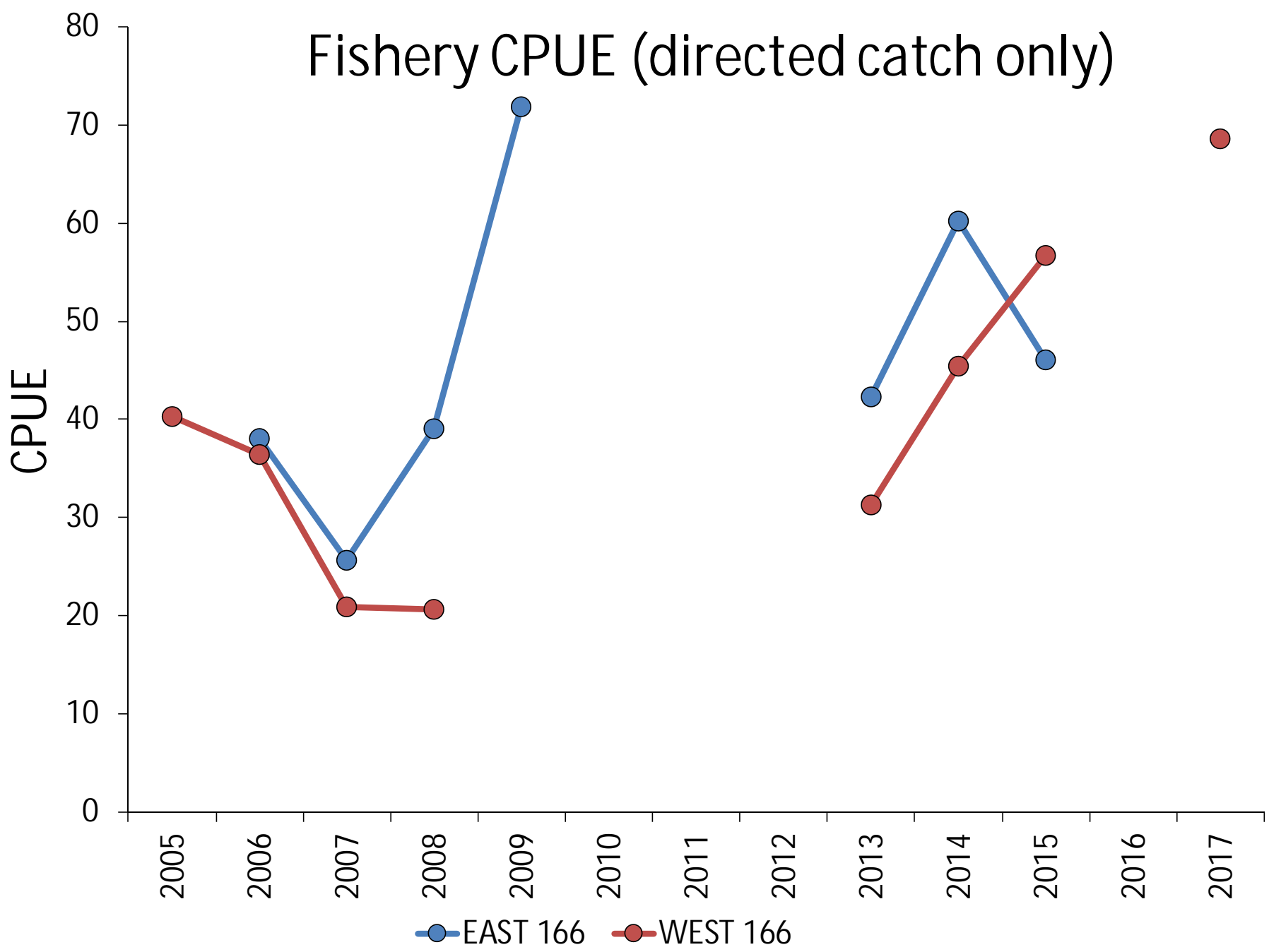
Showing stat areas with 3+
vessel participation

2017/18

Tanner crab catch (mill lb)



Fishery CPUE (directed catch only)



2017/18 WBT Observations

- Fishing was generally strong and consistent for all vessels.
- A handful of vessels started fishing WBT immediately after BBRKC and were able to quickly catch their quota and make deliveries to Trident Saint Paul.
- Observer CPUE (crab/pot)

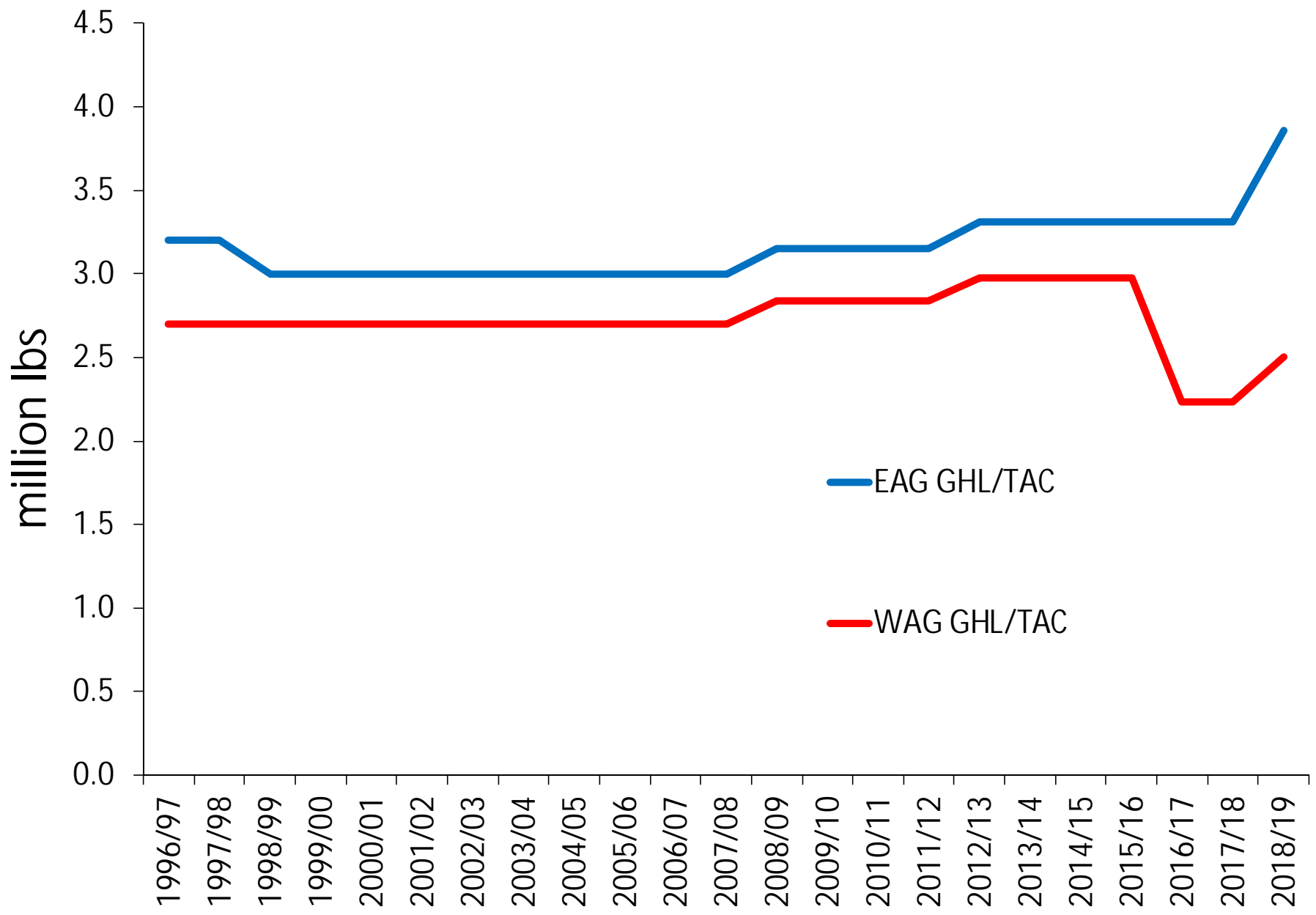
Min – 13.7

Max – 126.4

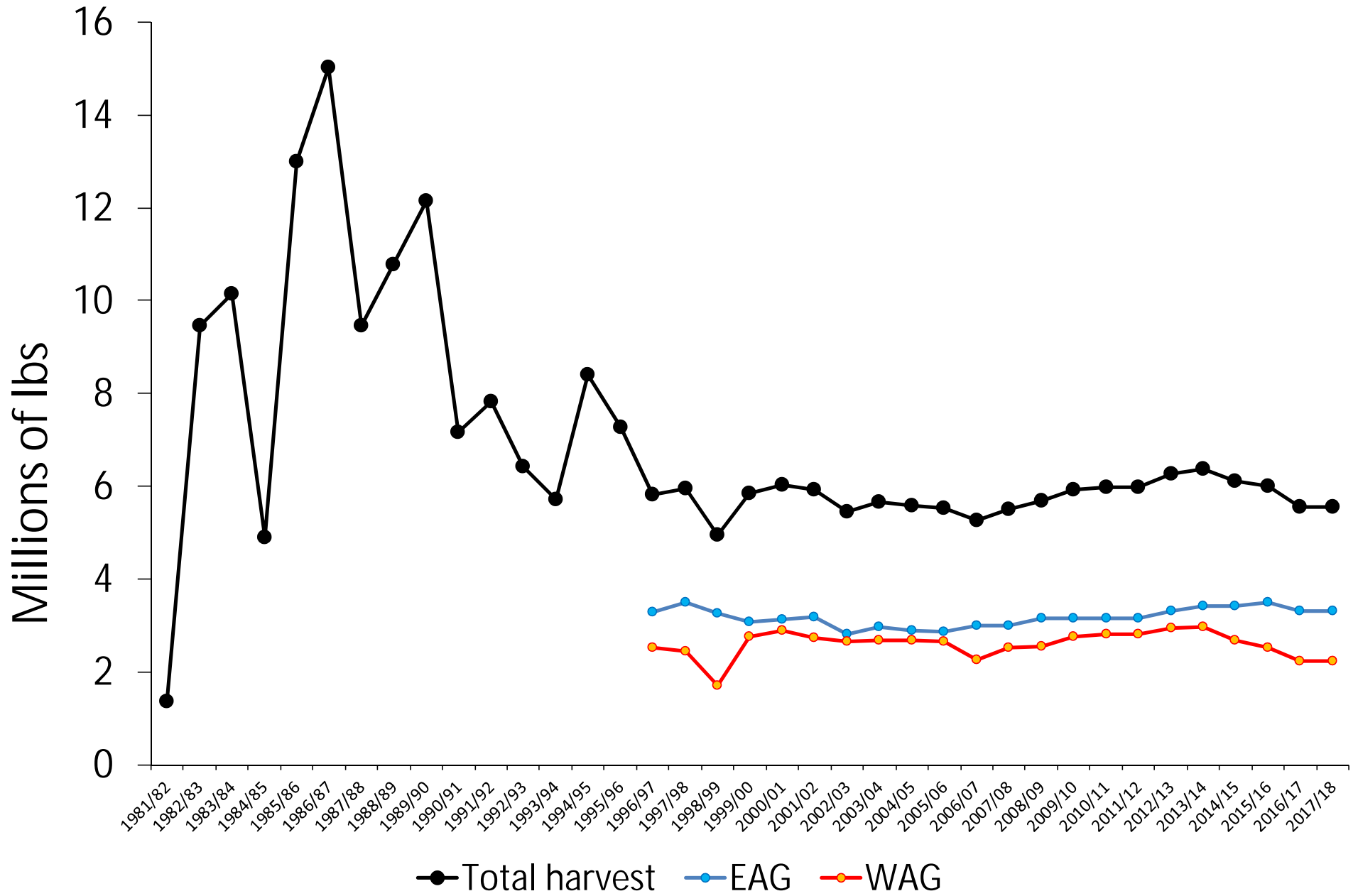
Avg – 64.3

StDv – 35

AIGKC

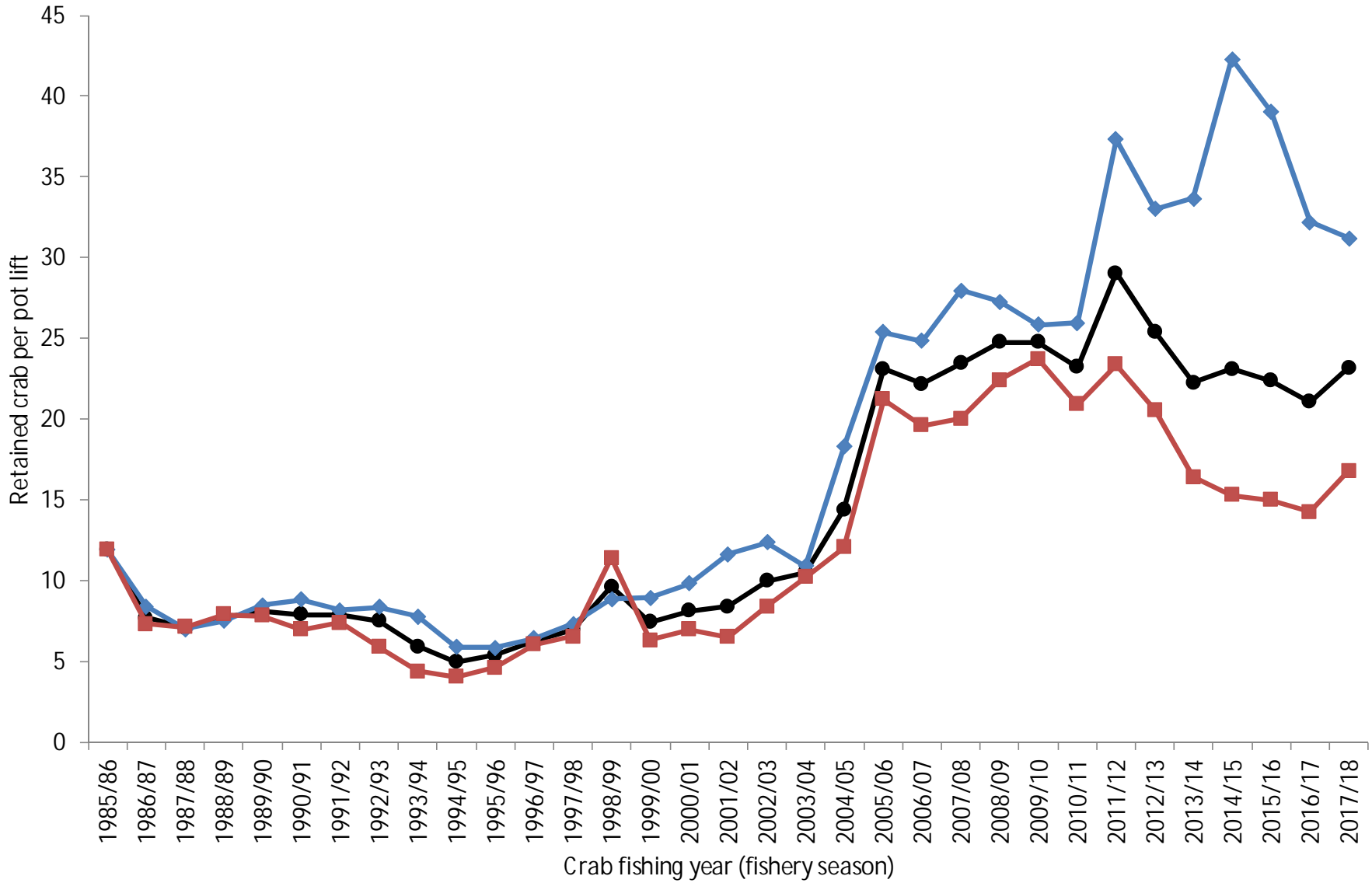


Total AIGKC harvest



CPUE

● Total ◆ East of 174 W long. ■ West of 174 W long.



AIGKC: Harvest Spatial Distribution

- Many stat areas had only 1 or 2 vessels fish
 - Confidential
- Fairly consistent spatial distribution of harvest relative to past years*
 - *Some fishery effort/harvest occurred farther west than normal in WAG

Pribilof GKC

- Fishery conducted by calendar year
- 2 vessels participated in the 2017 fishery
 - Specific catch numbers + spatial data confidential
 - GHF = 130,000 lb (59 t) was achieved

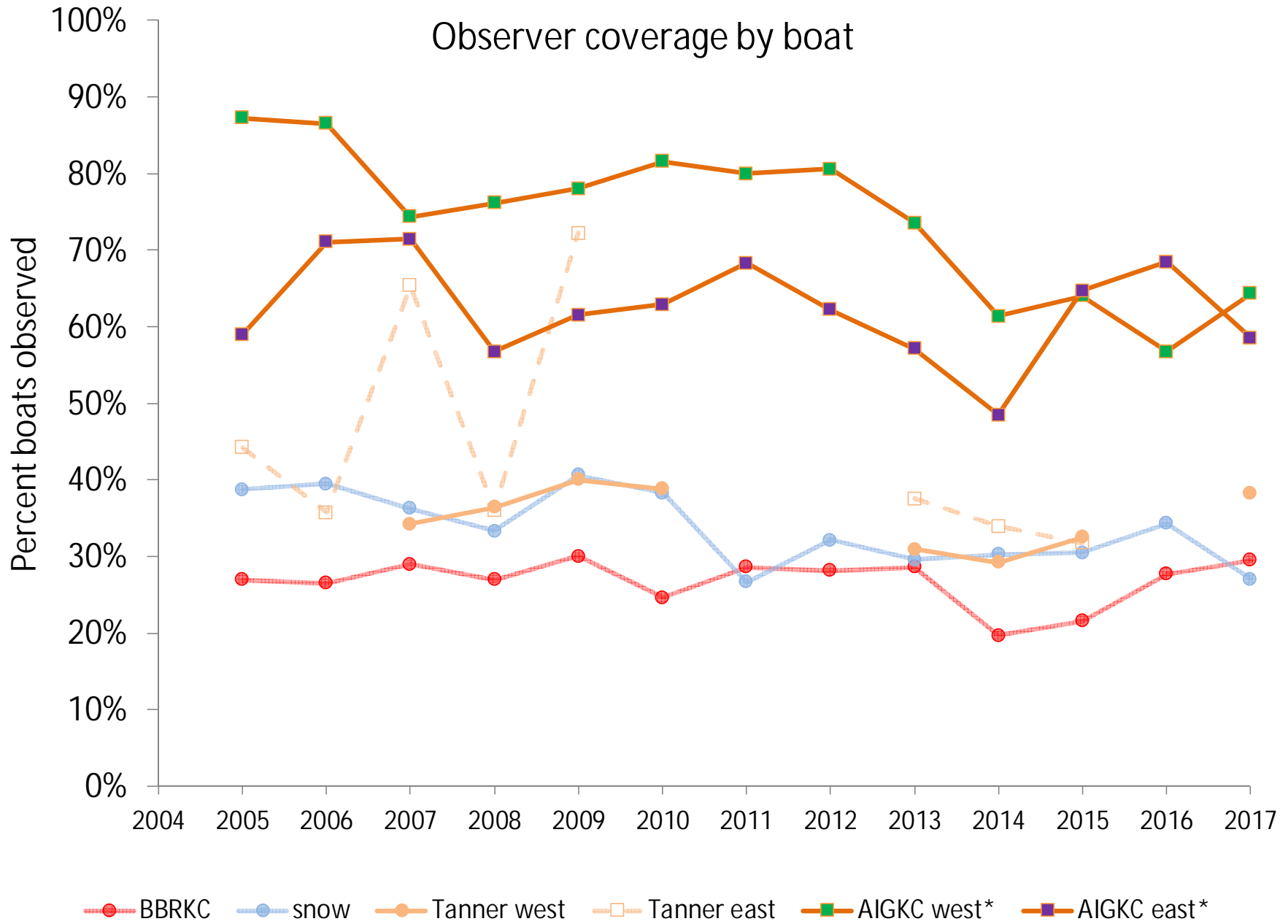
Mandatory catcher-vessel coverage requirements in FMP BSAI commercial crab fisheries, per 5 AAC 39.645. All vessels processing crab must carry observers.

Fishery	Coverage
Bering Sea snow crab	30-100% (a)
Bristol Bay red king crab	20% (a)
Bering Sea Tanner crab	30-100% (a)
Pribilof District red king crab	100%
Pribilof District blue king crab	100%
Saint Matthew Island blue king crab	100%
Norton Sound red king crab	Discretionary
Aleutian Islands golden king crab	50% (b)
Pribilof District golden king crab	100%
Adak red king crab	100%

^a Vessels required to carry observers are randomly selected.

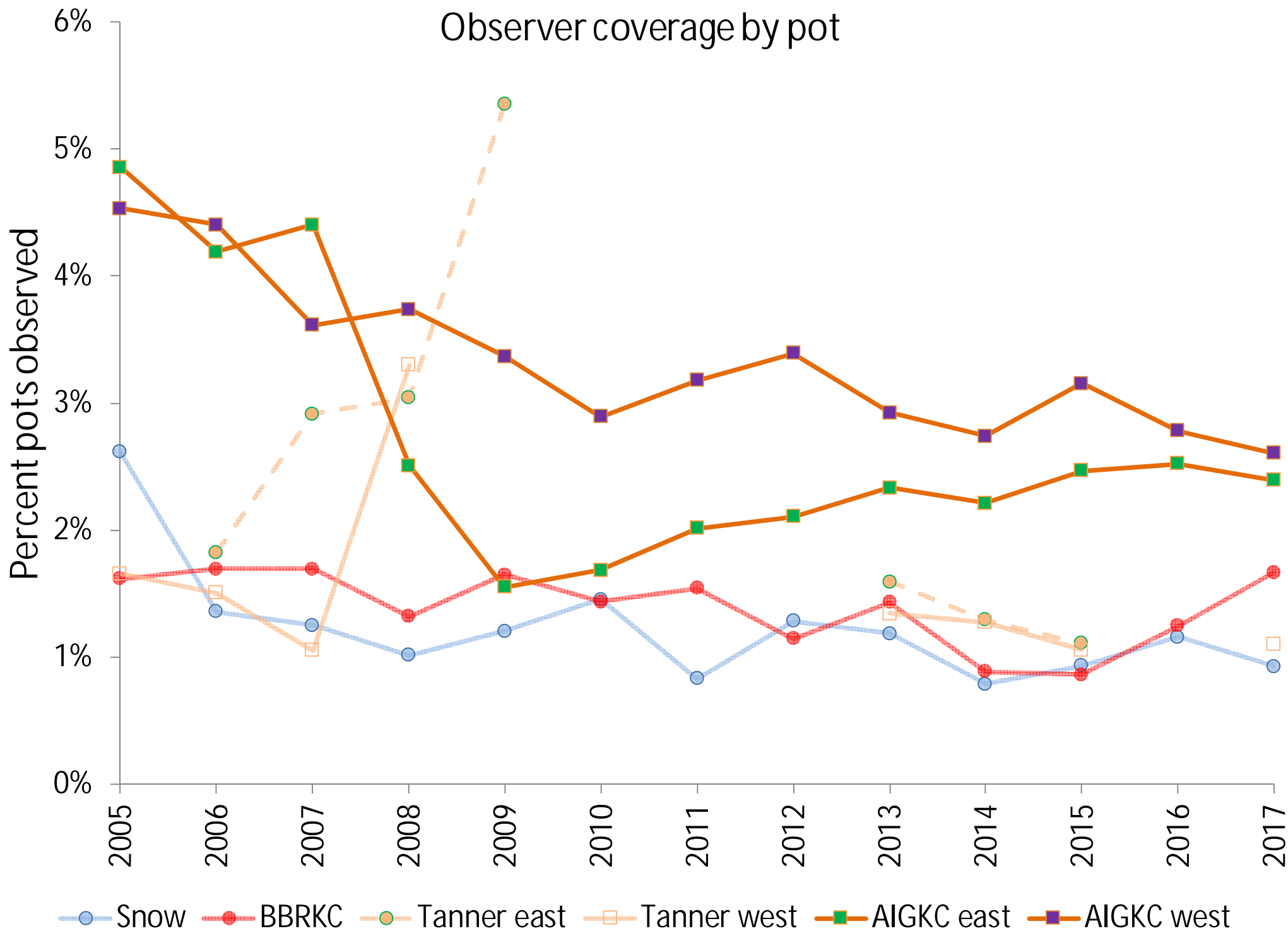
^b All catcher vessels must carry an observer during harvest of 50% of total landed catch weight in each three-month trimester of nine-month season Aug 1 – Oct 31; Nov 1 – Jan 31; Feb 1 – April 30.

Observer coverage by boat



*AIGKC calculated by trip because of trimester regulation

Observer coverage by pot



Crab observer coverage tracking update:

- Previous observer coverage tracking by fishery: by vessel
 - observed vessels / total vessels = coverage %
 - BBRKC example: 12 vessels with observers onboard / 60 total vessels = 20% observer coverage for BBRKC
- New observer coverage in-season tracking: by landed weight

2017/18 BBRKC Observed vs Unobserved Summary

Observers Onboard	Landed Weight (sum)	% of Weight Obs	Days at Sea	% of Days at Sea
Not Observed	4,716,873	71.46%	625	75.60%
Observed	1,884,049	28.54%	253	24.40%