

**ADF&G Informational Handout for  
Charter Management Implementation Committee Meeting  
October 30, 2018**

Table 1. Preliminary charter halibut harvest estimates for Areas 2C and 3A for 2018.

Area	Mean wt (lb)	Logbook Harvest (no. fish)	Yield (lb)	RelMort (lb) <sup>a</sup>	Total Removals (lb)	Allocation (lb)	Overage (lb)	Overage %
2C	9.39	71,107	667,663	61,730	729,393	810,000	-80,607	-10.0%
3A	13.70	135,031	1,850,290	16,954	1,867,244	1,790,000	+77,244	+4.3%

<sup>a</sup> – Beginning in 2018, the IPHC requested that we include release mortality of both U26 and O26 fish in the charter sector’s total removals. The addition of U26 fish accounts for 1,824 lbs in 2C and 5,633 lbs in 3A.

Table 2. Comparison of projections (Dec 2017 analysis) and preliminary estimates (Oct 2018).

Area	Component	Projection Dec 2017	Preliminary Oct 2018	Preliminary Relative to Projection
2C	Harvest (no. fish)	75,430	71,107	-5.7%
	Average wt (lb)	10.17	9.39	-7.7%
	Yield (Mlb)	0.767	0.668	-13.0%
	Release mortality (Mlb)	0.041	0.062	49.0%
	Total removals (Mlb)	0.809	0.729	-9.8%
3A	Harvest (no. fish)	131,068	135,031	3.0%
	Average wt (lb)	13.41	13.70	2.2%
	Yield (Mlb)	1.757	1.850	5.3%
	Release mortality (Mlb)	0.021	0.017	-19.6%
	Total removals (Mlb)	1.778	1.867	5.0%

<sup>a</sup> – Beginning in 2018, the IPHC requested that we include release mortality of both U26 and O26 fish in the charter sector’s total removals. Predictions did not include U26 releases which accounts for .002 Mlbs in 2C and .006 Mlbs in 3A.

Table 3. Comparison of 2017 preliminary (Oct 2017) and final (Oct 2018) estimates.

Area	Component	Preliminary	Final	Final Relative to Preliminary
2C	Harvest (no. fish)	71,711	70,647	-1.5%
	Average wt (lb)	12.31	12.76	3.7%
	Yield (Mlb)	0.882	0.901	2.1%
	O26 Release mortality (Mlb)	0.039	0.040	2.3%
	Total removals (Mlb)	0.921	0.943	2.2%
3A	Harvest (no. fish)	143,654	142,664	-0.7%
	Average wt (lb)	14.48	14.55	0.5%
	Yield (Mlb)	2.079	2.076	-0.2%
	O26 Release mortality (Mlb)	0.014	0.014	-0.3%
	Total removals (Mlb)	2.093	2.089	-0.2%

Table 4. Performance of charter management measures recommended annually by the North Pacific Fishery Management Council since 2012 (2018 preliminary estimates in bold italics).

Area	Year	Management measure	MgmtType	Allocation <sup>a</sup>	Removals <sup>a</sup>	Overage	% Overage
2C	2012	One fish, U45-O68 rev. slot	GHL	0.931	0.605	-0.326	-35%
	2013	One fish, U45-O68 rev. slot	GHL	0.788	0.762	-0.026	-3%
	2014	One fish, U44-O76 rev. slot	CSP	0.761	0.827	0.066	9%
	2015	One fish, U42-O80 rev slot	CSP	0.851	0.814	-0.037	-4%
	2016	One fish, U43-O80 rev slot	CSP	0.906	0.839	-0.067	-7%
	2017	One fish, U44-O80 rev slot	CSP	0.915	0.943	0.028	3%
	2018	One fish, U38-O80 rev slot	CSP	0.810	<b>0.729</b>	-0.081	-10%
	3A	2012	Two fish any size	GHL	3.103	2.284	-0.819
2013		Two fish any size	GHL	2.734	2.514	-0.220	-8%
2014		Two fish, one ≤ 29", one trip/day with halibut harvest.	CSP	1.782	2.068	0.286	16%
2015		Two fish, one ≤ 29", Thursday closed Jun 15-Aug 31, annual limit 5 halibut, one trip/day with halibut harvest.	CSP	1.890	2.094	0.204	11%
2016		Two fish, one ≤ 28", Wednesday closed all year, annual limit 4 halibut, one trip/day with halibut harvest.	CSP	1.814	2.021	0.207	11%
2017		Two fish, one ≤ 28", Wednesday closed all year, three Tuesdays closed, annual limit 4 halibut, one trip/day with halibut harvest.	CSP	1.890	2.089	0.199	11%
2018		Two fish, one ≤ 28", Wednesday closed all year, six Tuesdays closed, annual limit 4 halibut, one trip/day with halibut harvest.	CSP	1.790	<b>1.867</b>	0.077	4%

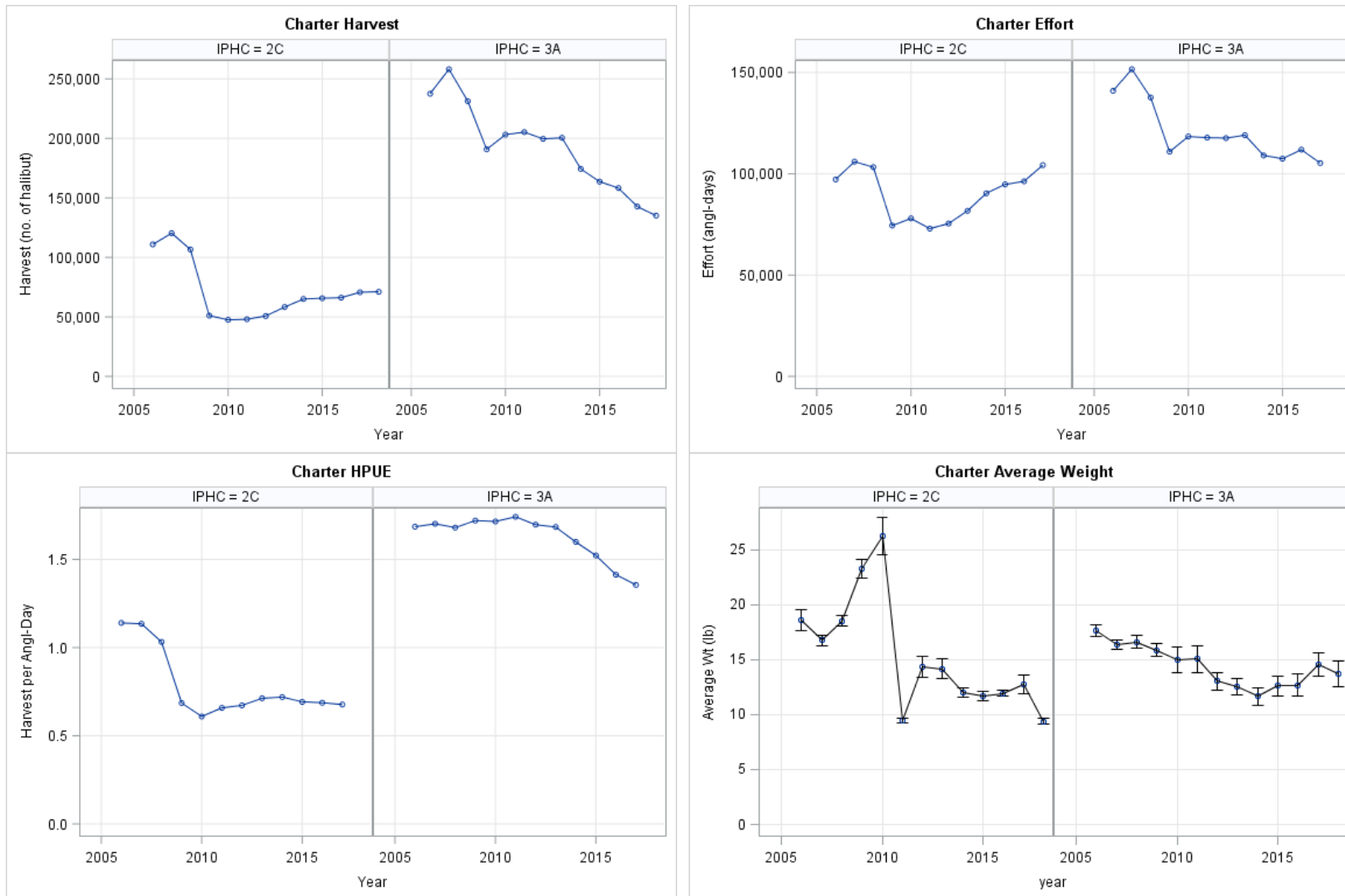


Figure 2. Harvest, effort, harvest-per-unit-effort, and mean weight in IPHC Areas 2C and 3A, 2006-2018 (effort and HPUE through 2017 only).

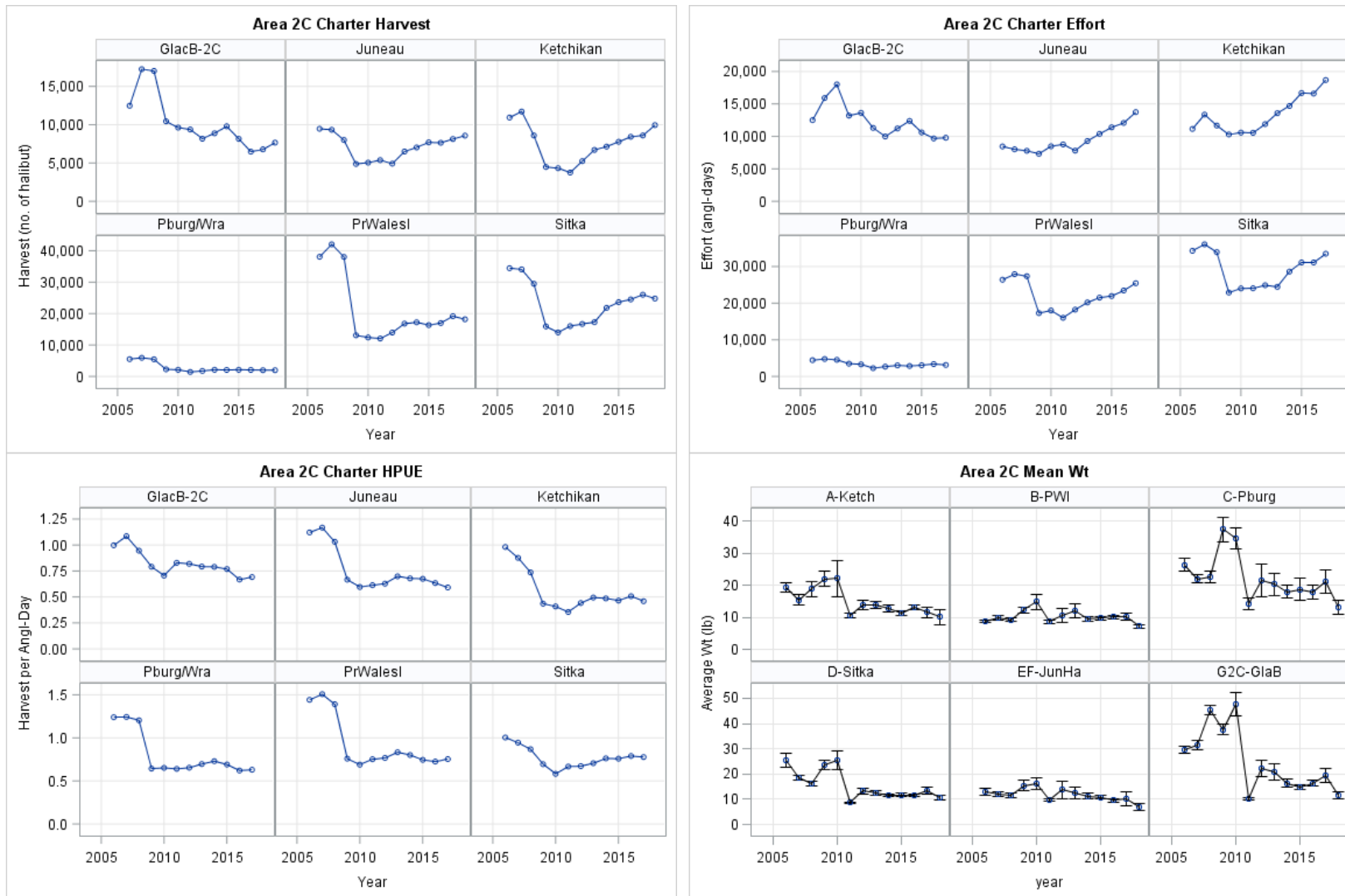


Figure 3. Harvest, effort, harvest-per-unit-effort, and mean weight by subarea in IPHC Area 2C, 2006-2018 (effort and HPUE through 2017 only).

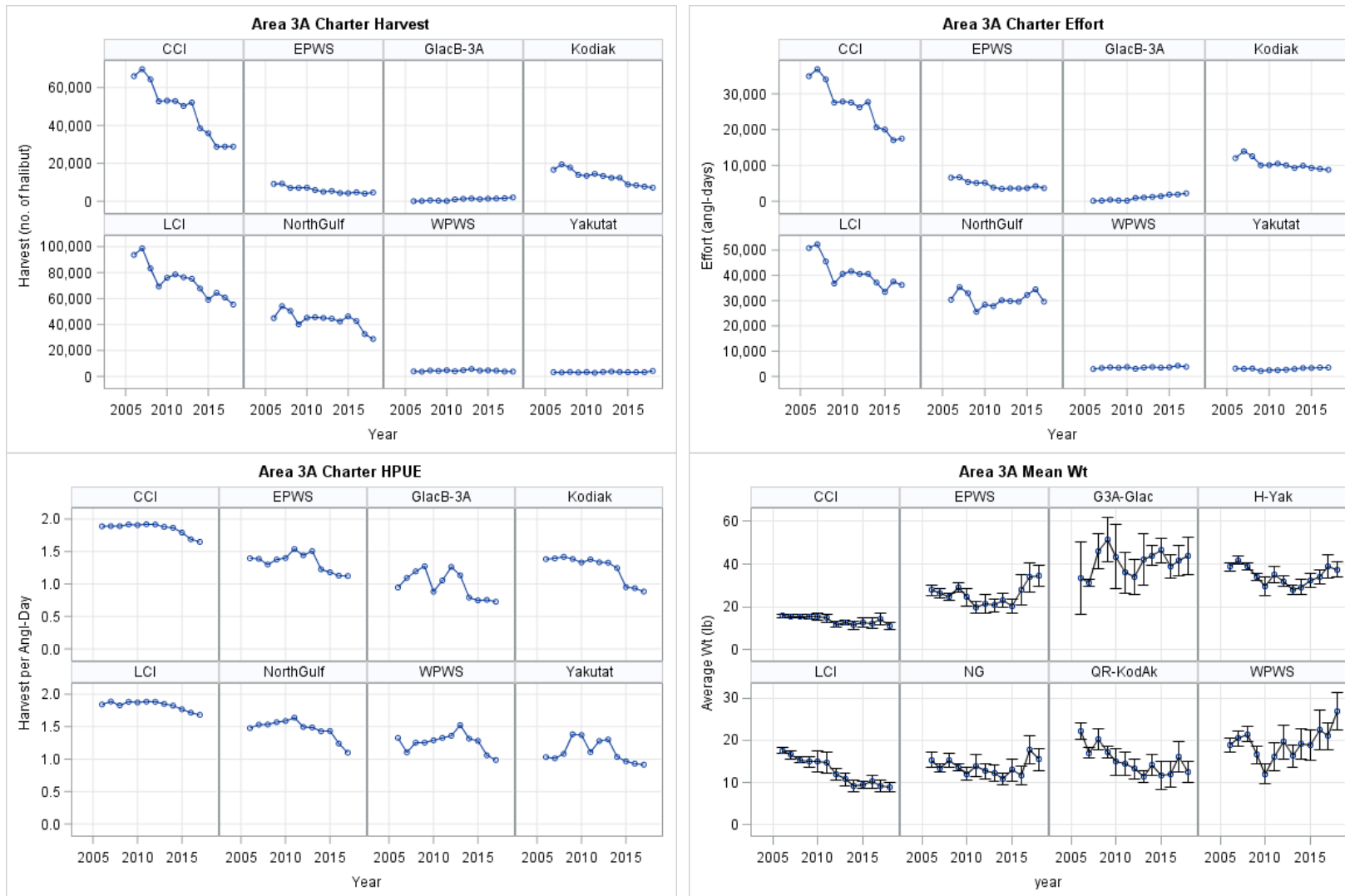
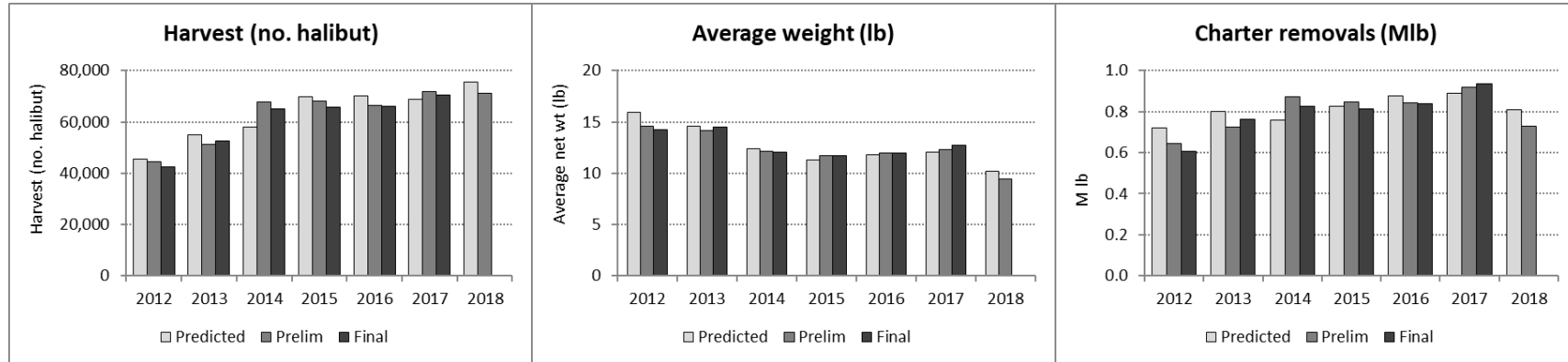


Figure 4. Harvest, effort, harvest-per-unit-effort, and mean weight by subarea in IPHC Area 3A, 2006-2018 (effort and harvest through 2017 only).

**Area 2C**



**Area 3A**

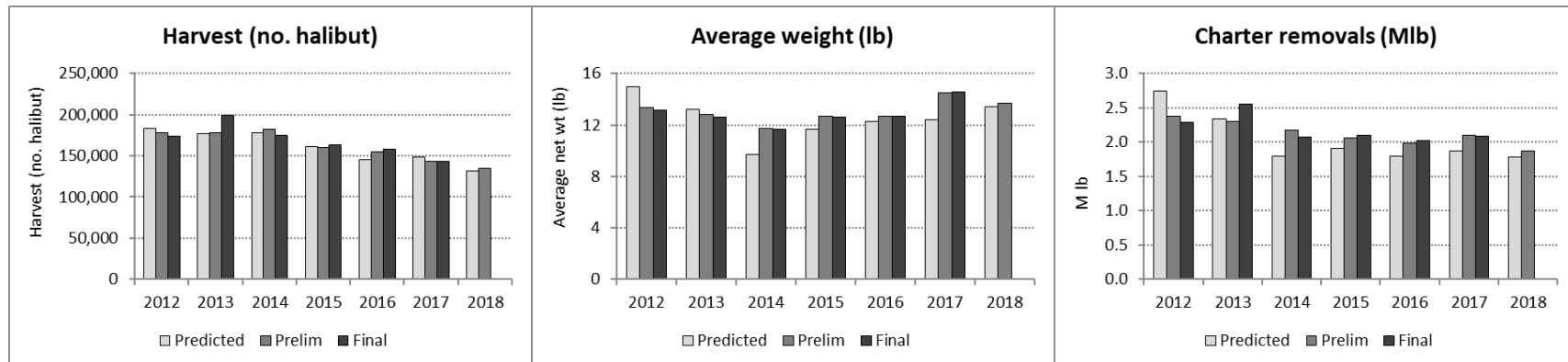


Figure 5. Comparison of projections (prior to each season), preliminary estimates (based on partial-year logbook data), and final estimates of harvest, average weight, and total charter removals, Areas 2C and 3A, 2012-2018.