

# 2018 winter acoustic-trawl survey of the Bogoslof Island

Denise McKelvey & MACE Program  
Alaska Fisheries Science Center

area

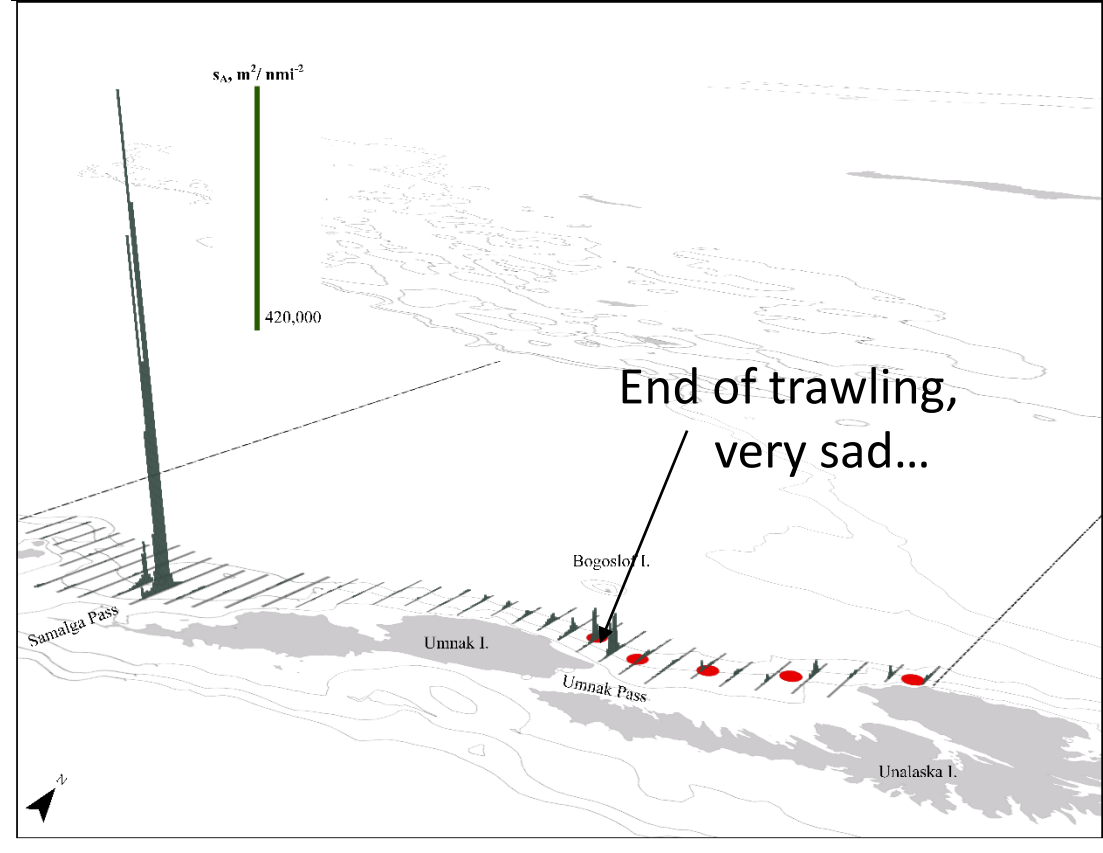
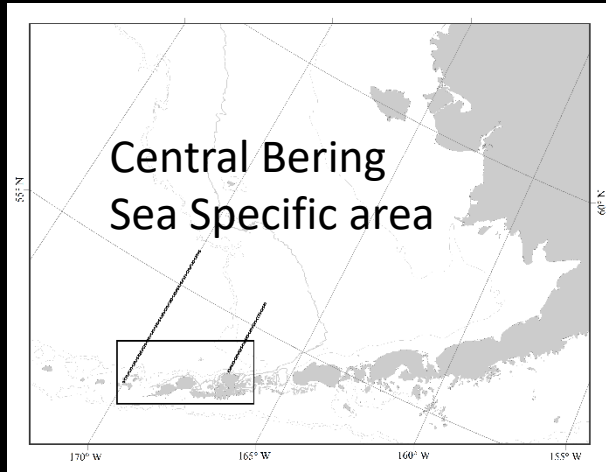


3–7 March 2018

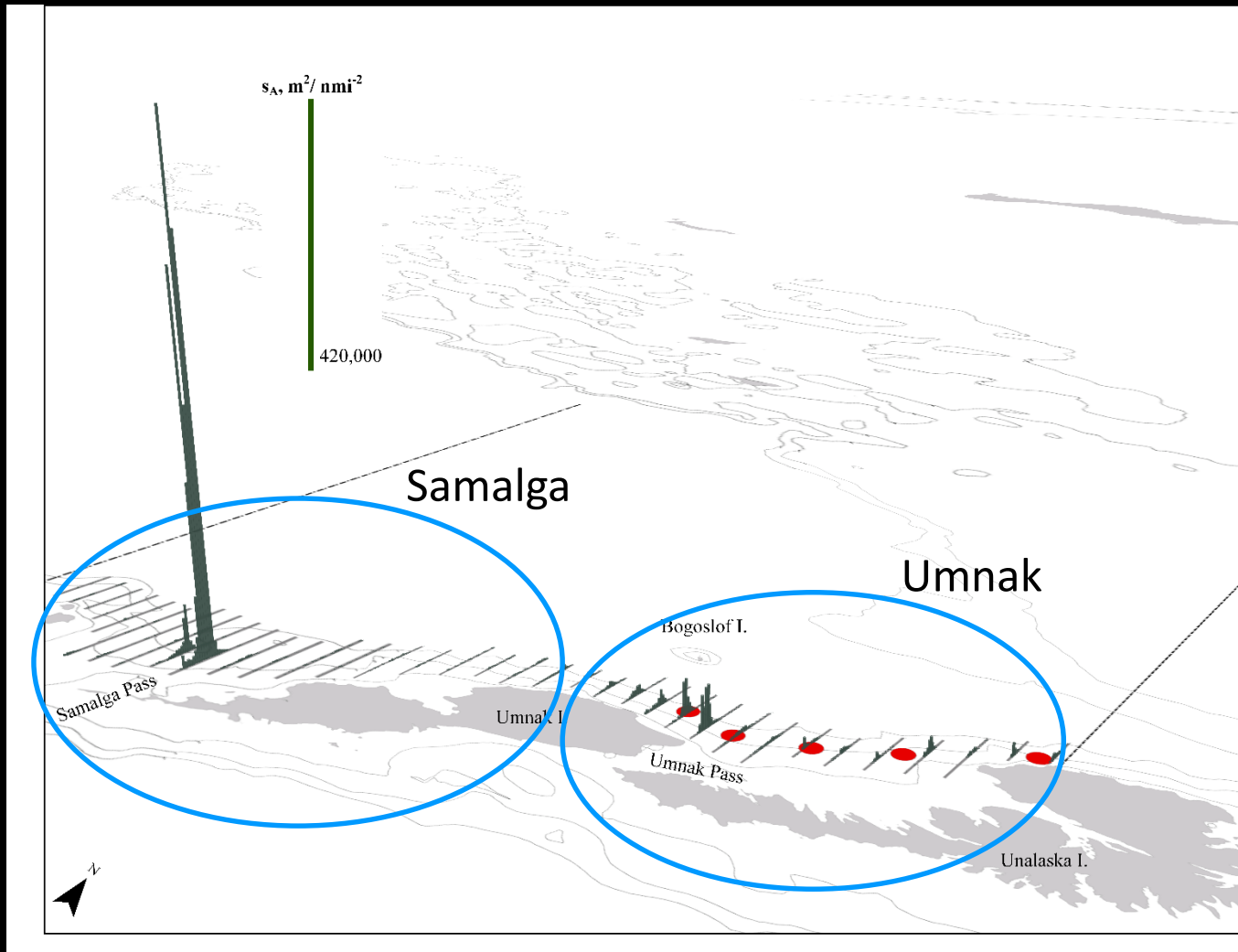


NOAA ship *Oscar Dyson*

# Bogoslof Island area AT survey: March 2018



# Bogoslof Island area AT survey: March 2018



## Umnak: 5 midwater samples

### Catch by weight

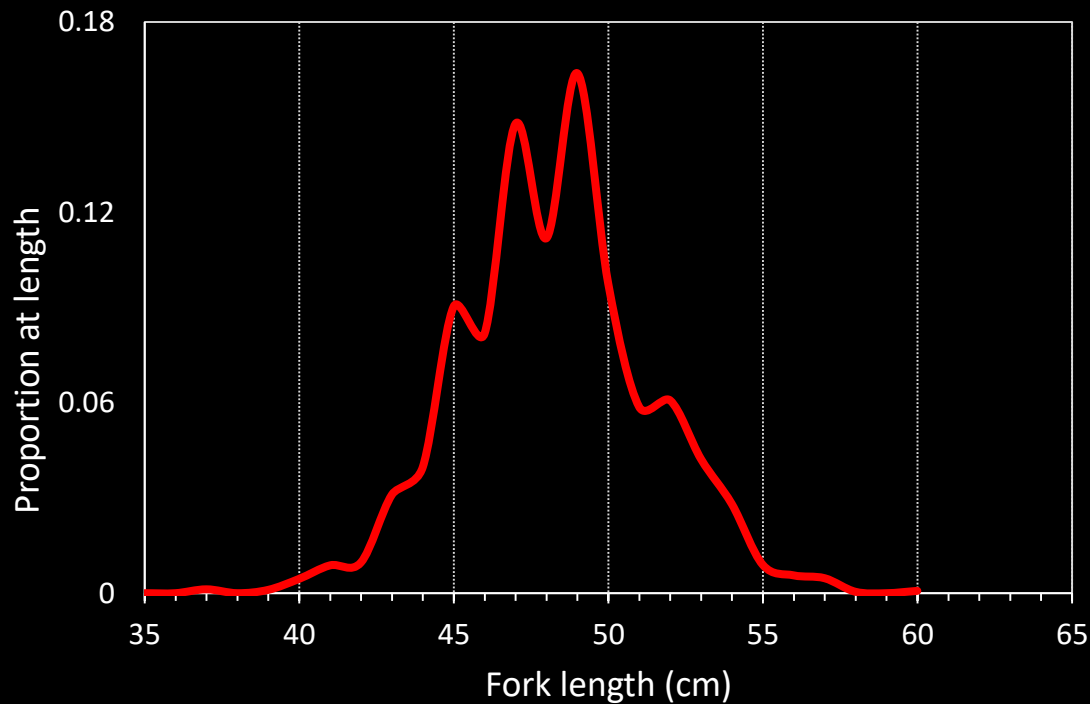
Pollock (98.5%)

Northern smoothtongue (0.6%)

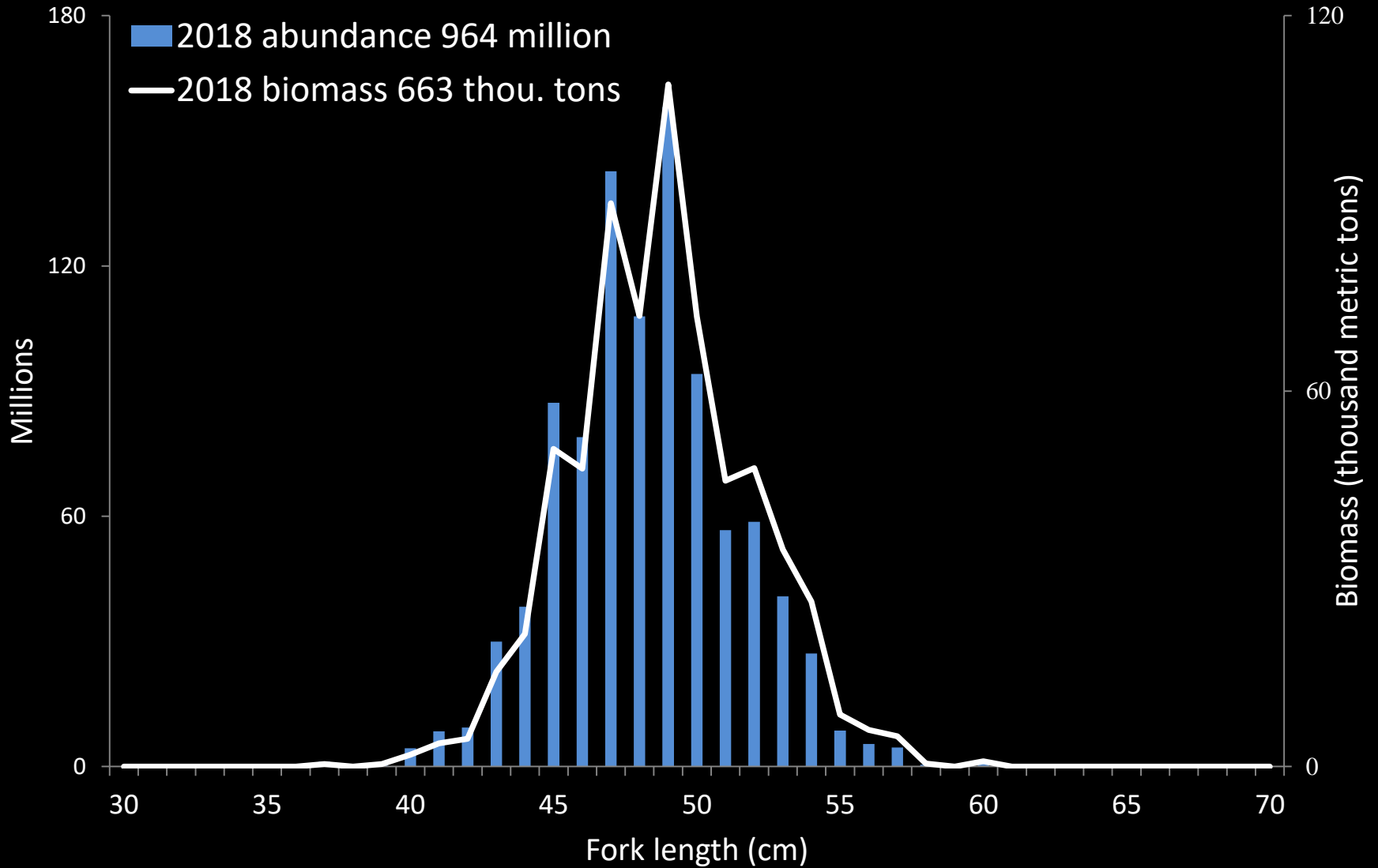
Lanternfish (0.4%)

### Female pollock maturities

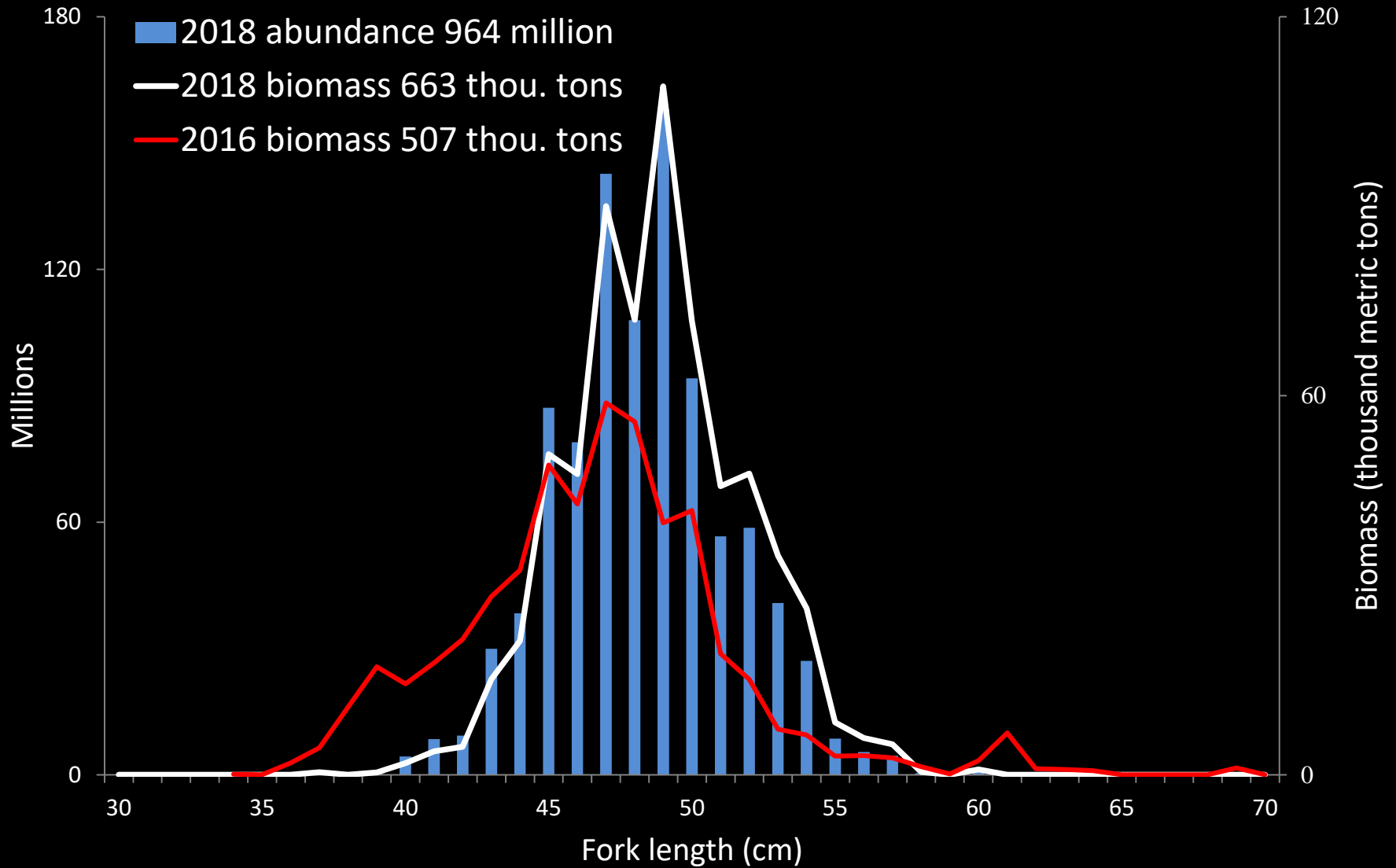
82% spawning and post-spawning

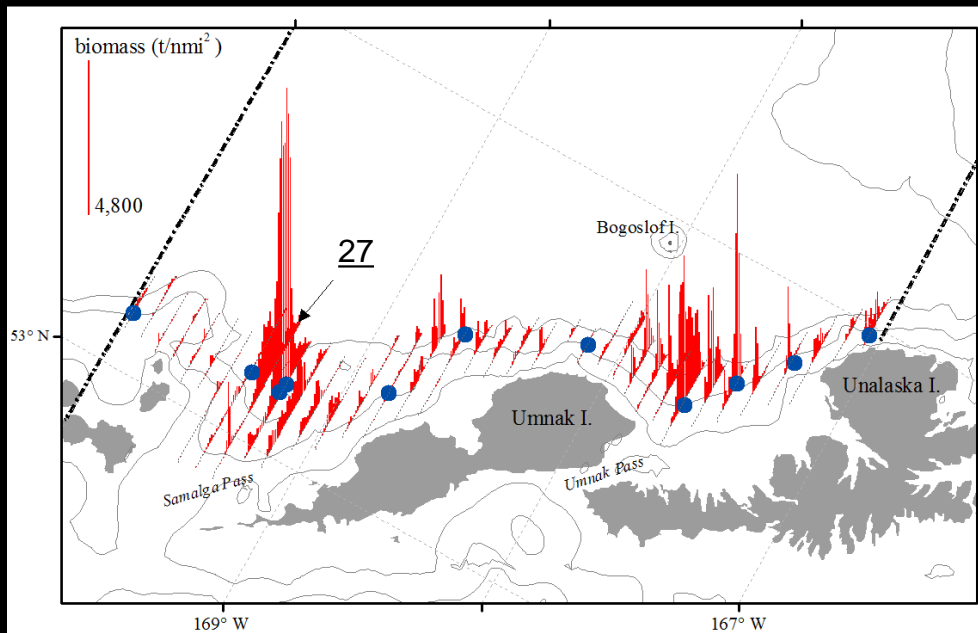


# 2018 population at length

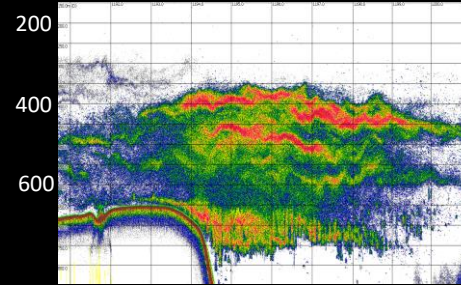


## 2016-2018 population at length

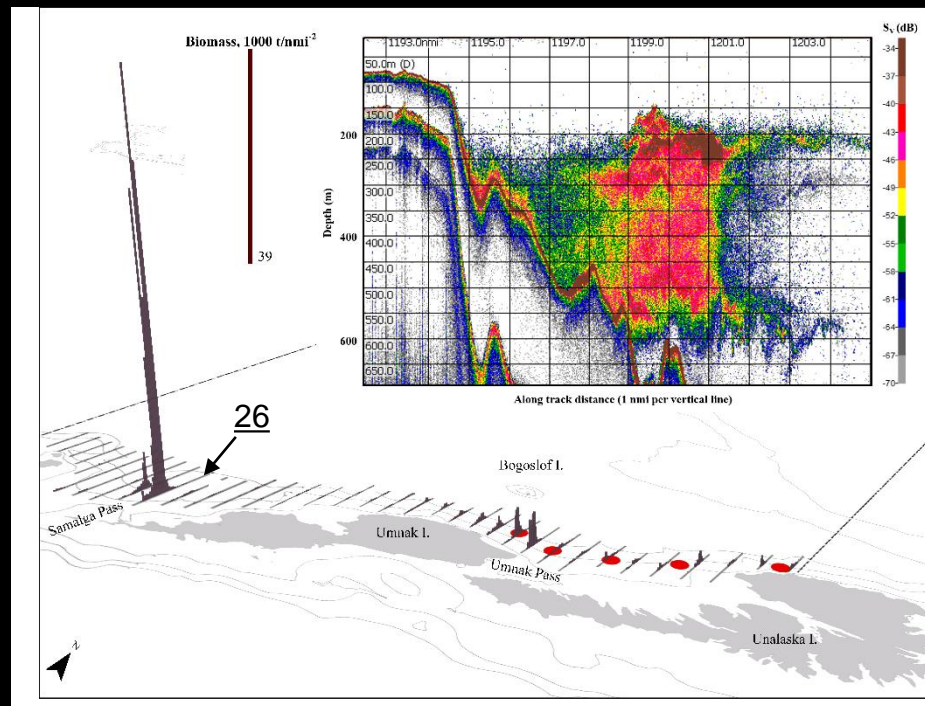




2016



2018



# Historical biomass at length

