



**NOAA  
FISHERIES**

Alaska  
Fisheries  
Science  
Center

# Economic Status of the Groundfish Fisheries off Alaska, 2017

Presented by:

Ben Fissel  
AFSC Economics and Social  
Sciences Research Program (ESSRP)

Sept. 19, 2018

# GPT Species Economic Performance Report

- Economic Performance Reports:
  - BSAI: pollock, Pacific cod, flatfish complex (yellowfin sole, rock sole, flathead, arrowtooth) , rockfish (Pac. ocean perch, northern rockfish), Atka mackerel.
  - GOA: pollock, Pacific cod, flatfish (arrowtooth), rockfish (Pac. ocean perch, northern rockfish).
  - Combined: sablefish (ESP).
- EPRs will be revised to incorporate new data and discuss updated market conditions. (completed late Sept./early Oct.)
- GPT can give feedback/discuss:
  - Information appears to be getting used!
  - Content: Too much/not enough information? Report too long? Different information? Useful to you?

# Economic Status Report, 2017: Content of the Sept. Draft

- Executive Summary: 2017 highlights
- Overview of the Economic Data Tables
  - Information for understanding economic data
- Economic Data Tables
  - Next slide
- Economic Indices – figures and tables only
  - Summary indices of value, catch/production, and price by region, at-sea/shoreside, species, gear, product type.

# Economic Data Tables

<p>All Alaska Summary Tables 1 – 10</p>	<p>Catch (total and retained) Summarized discards and PSC Ex-vessel value 1<sup>st</sup> wholesale production and revenue Vessel counts</p>
<p>Bering Sea and Aleutian Islands Tables 11 – 26</p>	<p><u>Ex-vessel</u>: Retained catch, prices and value (with specific flatfish and rockfish species). Retained catch by target. Value metrics by fleet</p> <p><u>1<sup>st</sup> wholesale</u>: Production, prices, and value (with specific flatfish and rockfish species). Production value metrics by processor group</p>
<p>Gulf of Alaska Tables 27 - 42</p>	<p><u>Effort</u>: Vessel counts, average length, tonnage, CV and CP fishing weeks, CV and CP crew weeks.</p>
<p>Pacific halibut Tables H1 – H10</p>	<p>Catch PSC Ex-vessel value, price 1<sup>st</sup> wholesale production, value and price Effort: vessel counts, vessel days, crew days</p>

# Where to find the data I need?

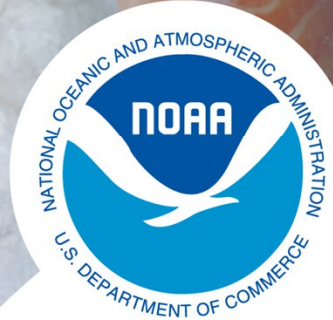
\\nmfs\akc-public\Dropbox\Fissel\EconomicSAFEData2018

Open `Tablennames_econGroundfishSafe.csv`  
To get an excel sheet matching table names to file names.

List of Tables	File name	A	B
1 Groundfish catch in the commercial fisheries of Alaska by area and species, 2007-2016 (1,000 metric tons, round weight)	gftotcatch_ak.csv		
2 Catch of species other than groundfish in the domestic commercial fisheries, 2002-2016 (1,000 metric tons)	nongftotcatch_ak.csv		
3 Groundfish retained catch off Alaska by area, vessel type, gear and	gfretrcatch_ak.csv		
	iscards_ak.csv		
	sc_ak.csv		
6 Real ex-vessel value of the catch in the domestic commercial fisheries off Alaska by species group, 2002-2016; calculations based on COAR (\$ millions, base year = 2016)	rexvval_ak.csv		
7 Production and real gross value of groundfish and non-groundfish	rwsval_ak.csv		

Currently only accessible to AFSC.

The data will be moved to and accessible through the website by November.



**NOAA**  
**FISHERIES**

# Economic Status Report, 2017: Additional Final Draft Content (Nov.)

- Report Card Metrics
- Plan Team Reports
- Wholesale and ex-vessel price projections
- Market Profiles
- Catch share performance metrics
- Amendment 80 Economic Data Report
- **Gulf Trawl Economic Data Report**
- Amendment 91 Economic Data Report
- **Communities Section**
- Recent and ongoing ESSRP research and publications

New or revised content in **RED**

# Alaska's Groundfish Fisheries in 2017

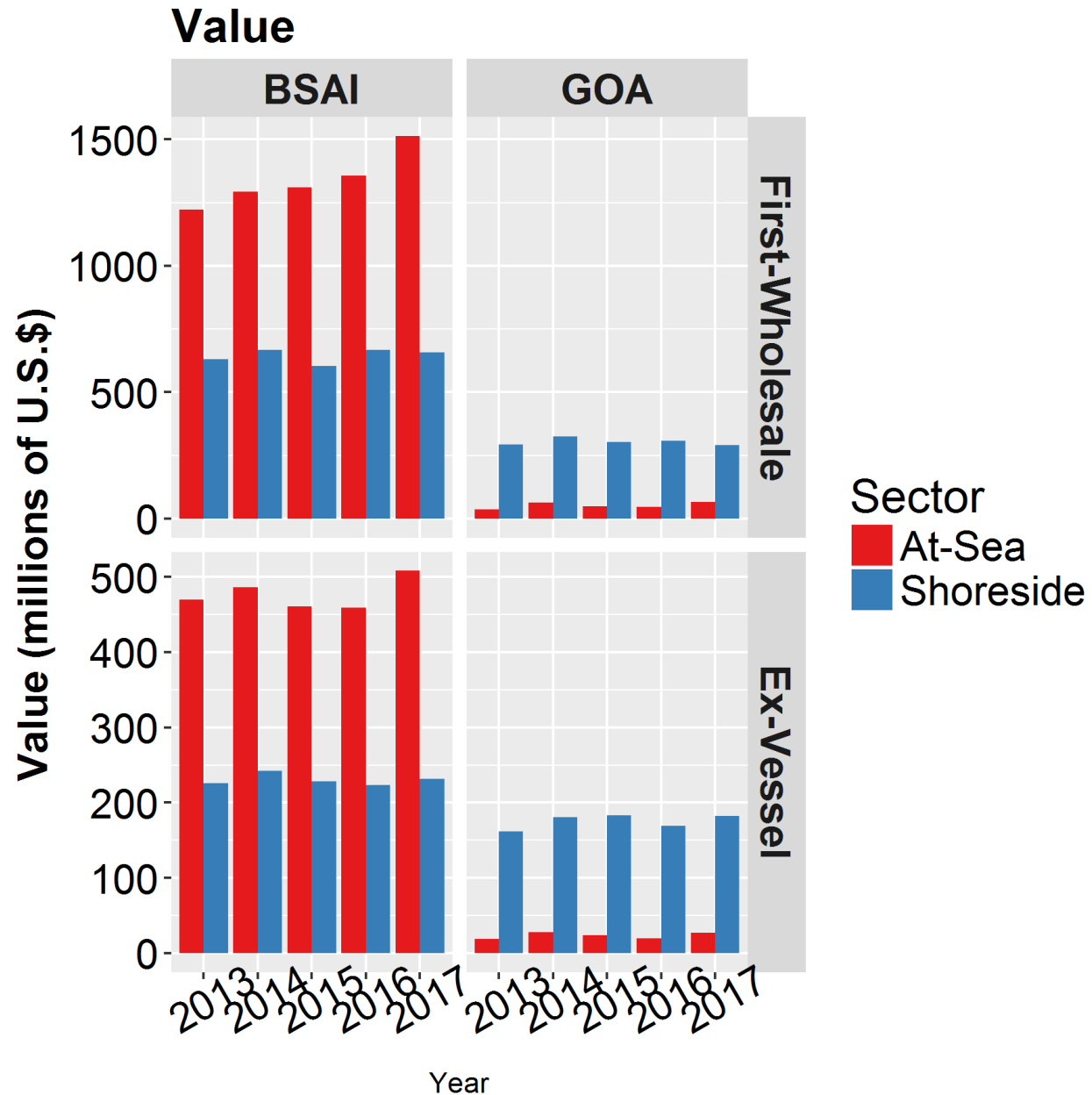
Total catch: 2.3 million t  
(decrease < 1%)

Value increasing or stable across most regions and sectors.

Wholesale value:  
\$2.52 billion (up 4%)

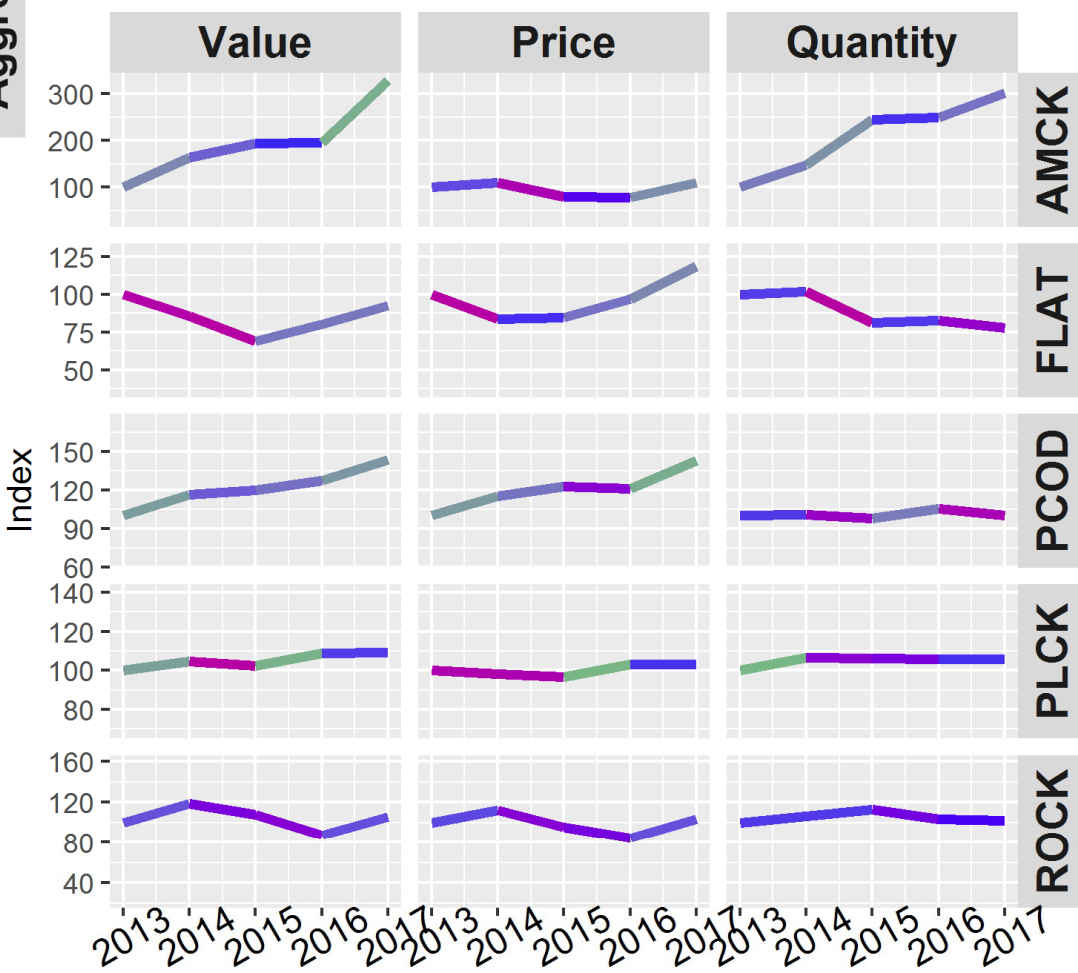
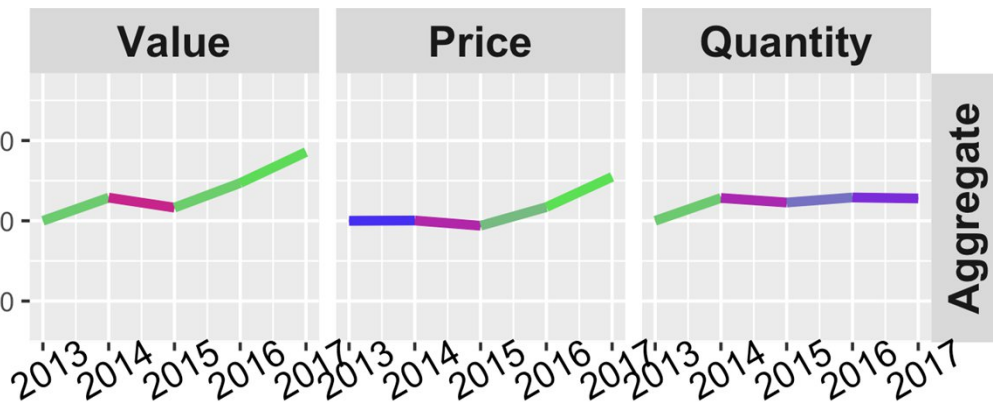
Ex-vessel value:  
\$949 million (up 7%)

Percent change adjusted for inflation.





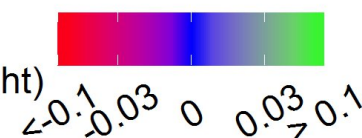
# BSAI First-Wholesale Economic Indices



## Species

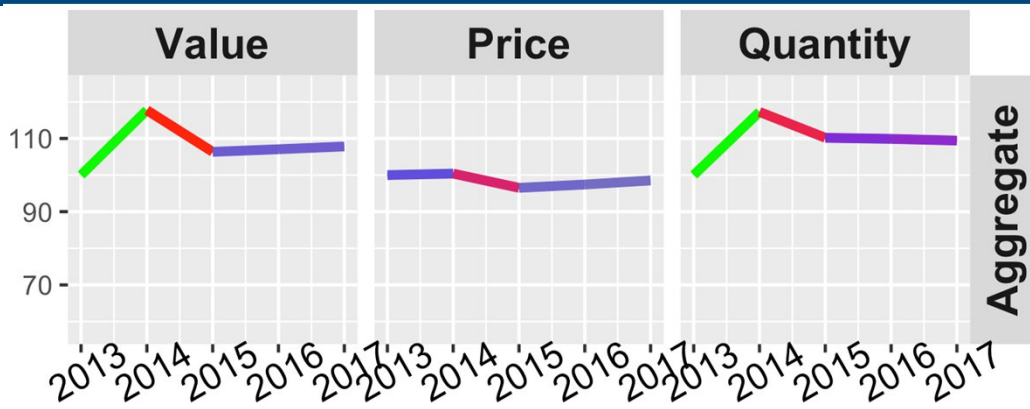
- Value stable:
  - Pollock
- Value increased:
  - Atka mackerel
  - Pacific cod
  - Flatfish
  - Rockfish

(yr-on-yr % change)\*(share weight)



Indices are nominal (not adjusted for inflation)

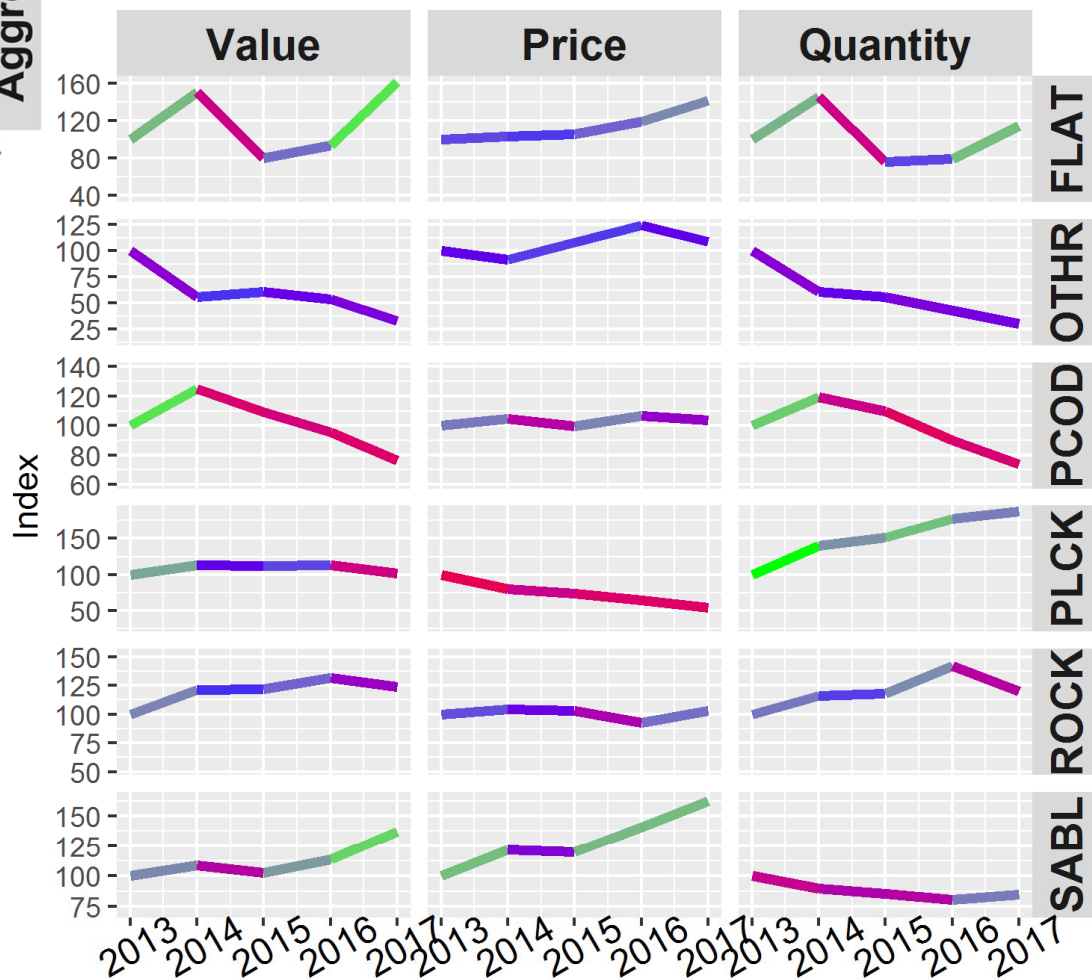




# GOA First-Wholesale Economic Indices

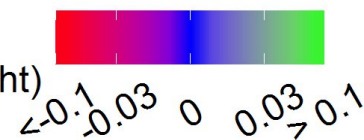
## Species

- Value decreases:
  - Pacific cod
  - Pollock
  - Rockfish
- Value increased:
  - Sablefish
  - Flatfish



Indices are nominal (not adjusted for inflation)

(yr-on-yr % change)\*(share weight)





# Economic Status Report, 2017



**NOAA**  
**FISHERIES**

The Economic Status Report serves many purposes.  
Among them is to provide information to the Plan Team.

Please give us your feedback.

Economic data for 2017 are still being finalized and validated (typically price and value).

- We invite feedback -- [Ben.Fissel@noaa.gov](mailto:Ben.Fissel@noaa.gov)