

Science, Service, Stewardship



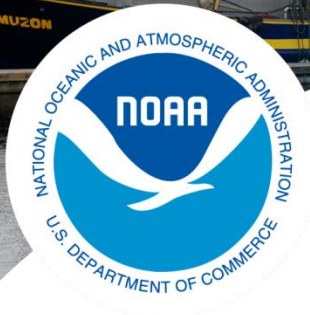
B REPORTS

ADP

EM

**NOAA
FISHERIES
SERVICE**

AFSC-AKR



NOAA
FISHERIES

Presentation Organization

Final ADP

- Observer Deployment Rate for 2014

EM

- EM Accomplishments in 2013
- 2014 EM Projects
- Key Considerations for EM/ER

2014 Observer Deployment Rate



**NOAA
FISHERIES**

Funding Goals:

- 1) Stable Deployment Rates in 2013 and 2014
- 2) No Disruption in Observer Deployment

Considerations

- 2014 Bridge Funding
 - a. Carry-over from 2013
 - b. NMFS Funding
- Estimated Industry Contribution
- 2015 Bridge Funding



2014 Selection Rate



**NOAA
FISHERIES**

Trip Selection Vessels:

Number of Days 4,295

Selection Rate 0.16

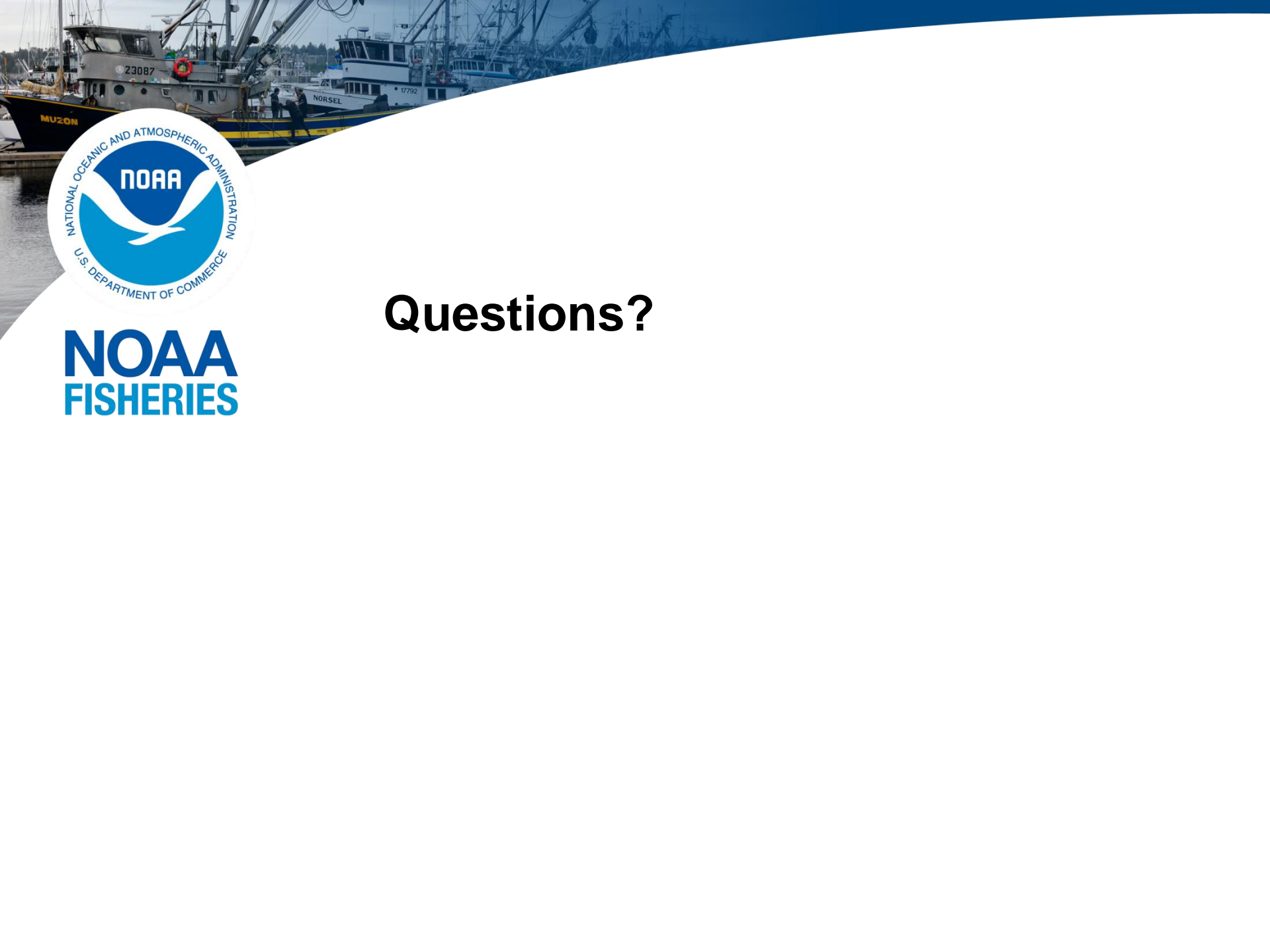
Vessel Selection Vessels:

Number of Days 1,223

Selection Rate 0.12

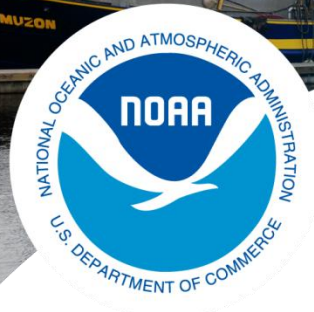
Deployment Totals:

Number of Days 5,518 in 2014/2015



NOAA
FISHERIES

Questions?



**NOAA
FISHERIES**

Accomplishments in 2013

Completed Review of All EM Studies (2012)

2013 Pilot Project

Stereo Camera systems designed specifically for fishery data collection

Electronic Monitoring Logging System (EMLS)

Developing and Submitting Funding Proposals



NOAA
FISHERIES

Pressing rewind: A cause for pause on electronic monitoring in the North Pacific?

Farron Wallace, Craig Faunce, Martin Loefflad

- *NOAA Fisheries, Alaska Fisheries Science Center, Seattle, USA,*
- .

2013 ICES Annual Science Conference
Reykjavik, Iceland

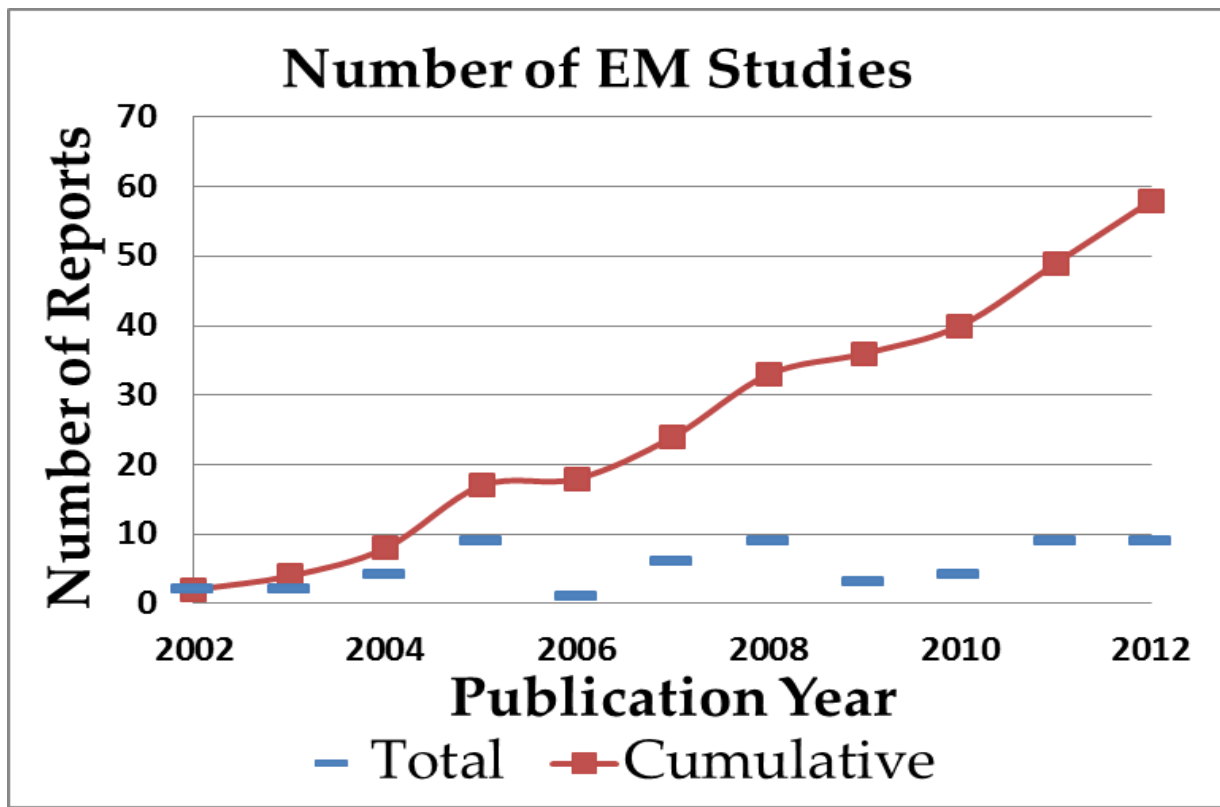
- September 27, 2013



Publication Year



NOAA
FISHERIES





NOAA
FISHERIES

EM Cost Savings

Is it cheaper compared to an Observer?

Yes: 33%

Potentially: 57%

No: 10%



**NOAA
FISHERIES**

Cause for pause Key Findings



1. Principal Investigators from the service industry have designed, implemented and evaluated most EM studies
2. Peer review is rare
3. Studies report lapses in data
4. Video quality is variable throughout a trip
5. There are differences in species compositions when EM is compared to Observer derived data
6. Time delay in acquiring data
7. Cost of collecting data is dependent on many factors however, Infrastructure \$ rarely mentioned



**NOAA
FISHERIES**

Video Monitoring

- Current EM; Effective tool for a variety of monitoring objectives (i.e. at monitoring compliance in retention fisheries where species identifications and weights can be determined by dockside monitors.)
- We see great potential for catch estimation especially where the catch is brought on board individually (gillnet, longline, and jig). Require innovation.

Common Misconceptions



NOAA
FISHERIES

NMFS AFSC does not have the expertise to develop/implement EM

- Number EM projects already Implemented
- AFSC MACE Program

Video data can be used to estimate catch

- Inability to accurately identify species
- Difficult to obtain weights of discarded fish

EM can replace observers

- Observer collects many types of information that EM cannot
- Length of time required to obtain, review and extract all requisite information

Common Misconceptions



NOAA
FISHERIES

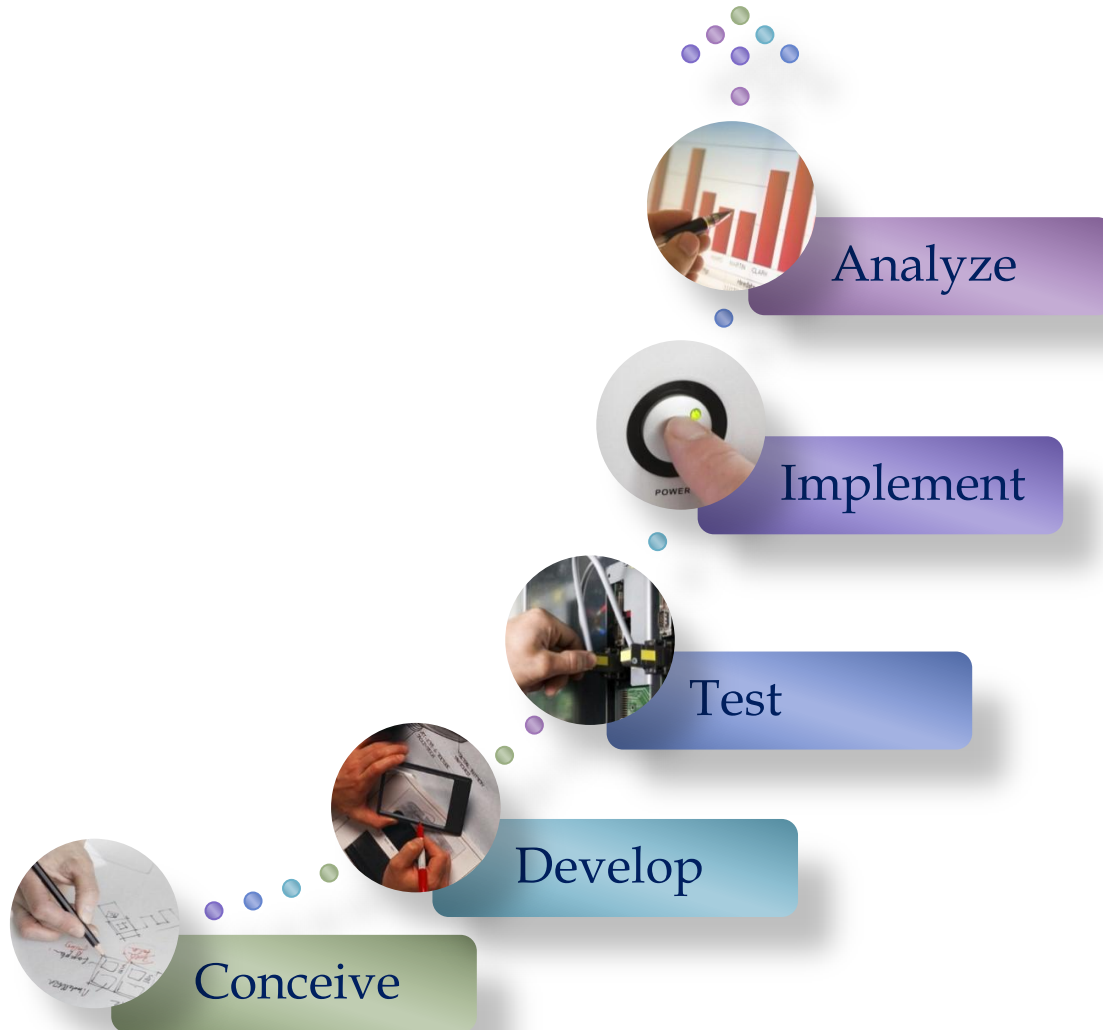
EM will be more cost effective than observers

- Highly dependent on monitoring objective
- Dependent on fishery characteristics
 - Temporal and spatial distribution
 - Operations, vessels, trips, catch volume



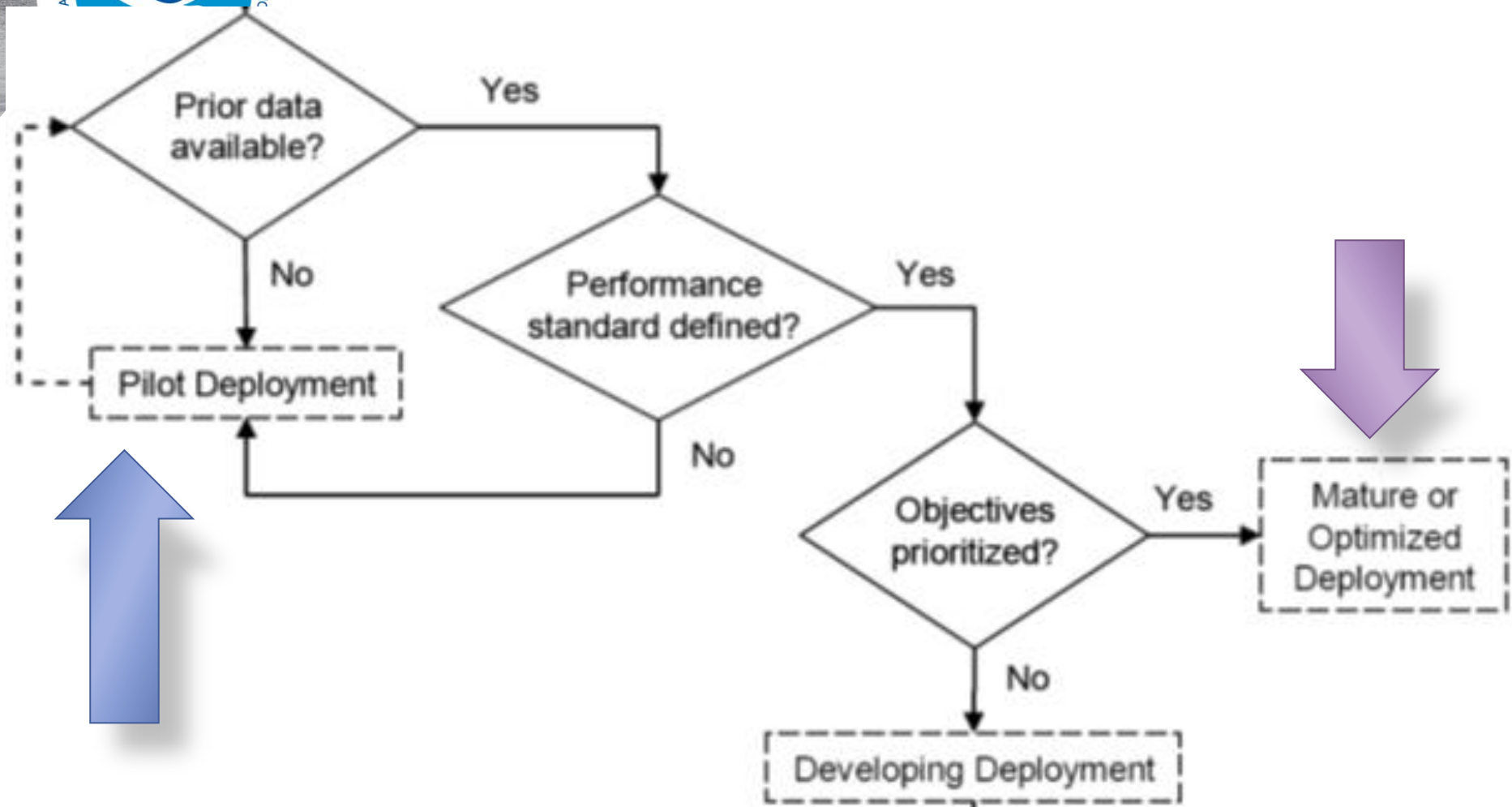
NOAA
FISHERIES

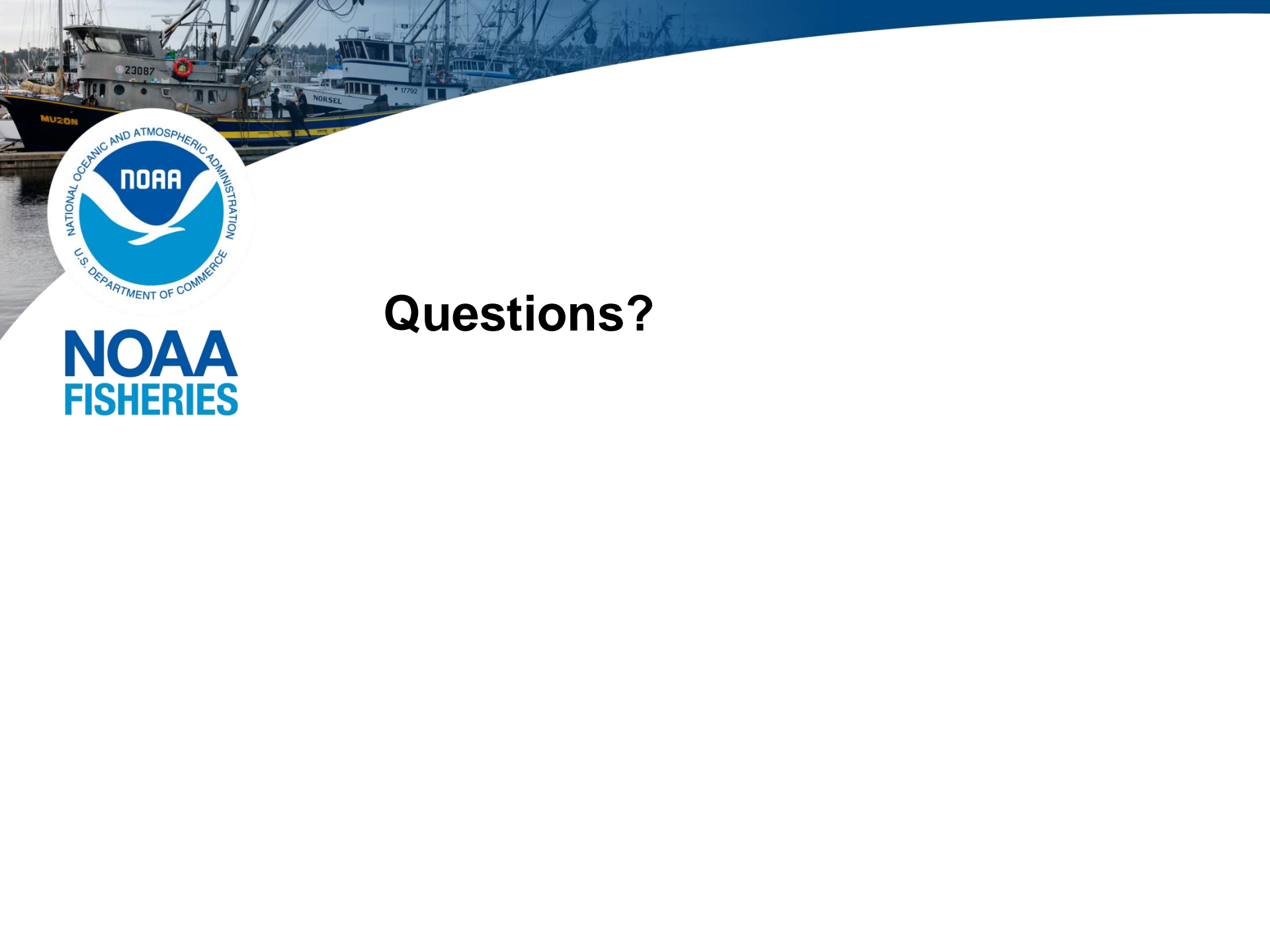
Process of Integrating EM/ER





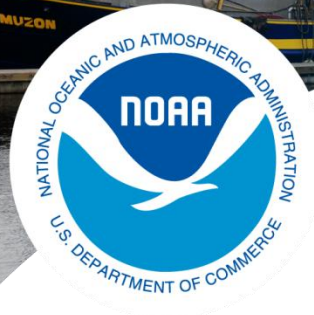
Implementation of EM





NOAA
FISHERIES

Questions?



NOAA
FISHERIES

2013-2014 EM Pilot Project

Objective: Develop a camera based EM tool that can reliably monitor fishing activities for an entire trip

- Provide reliable information on catch disposition and effort.
- Provide information to validate self reported information.
- Provide information to evaluate vessel operator responsibilities.

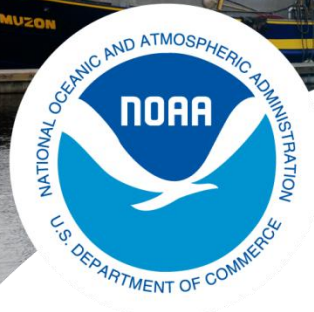


**NOAA
FISHERIES**

2013-2014 EM Pilot Project

What are the results from 2013?

- Total Participation 8 vessels or 1.5% of the fleet
- R&D improvement in video quality and reliability
- Have not finished post-processing data



**NOAA
FISHERIES**

2013-2014 EM Pilot Project

What's new in 2013?

- Provide conditional release from observer coverage for participating vessels
- Require filling out e-logbook

How many vessels can we accommodate?

- Limited number of camera systems (15)
- Funding for 60 installations
- Dependent on fishing patterns of volunteer vessels
- Kodiak, Homer, Petersburg and Sitka

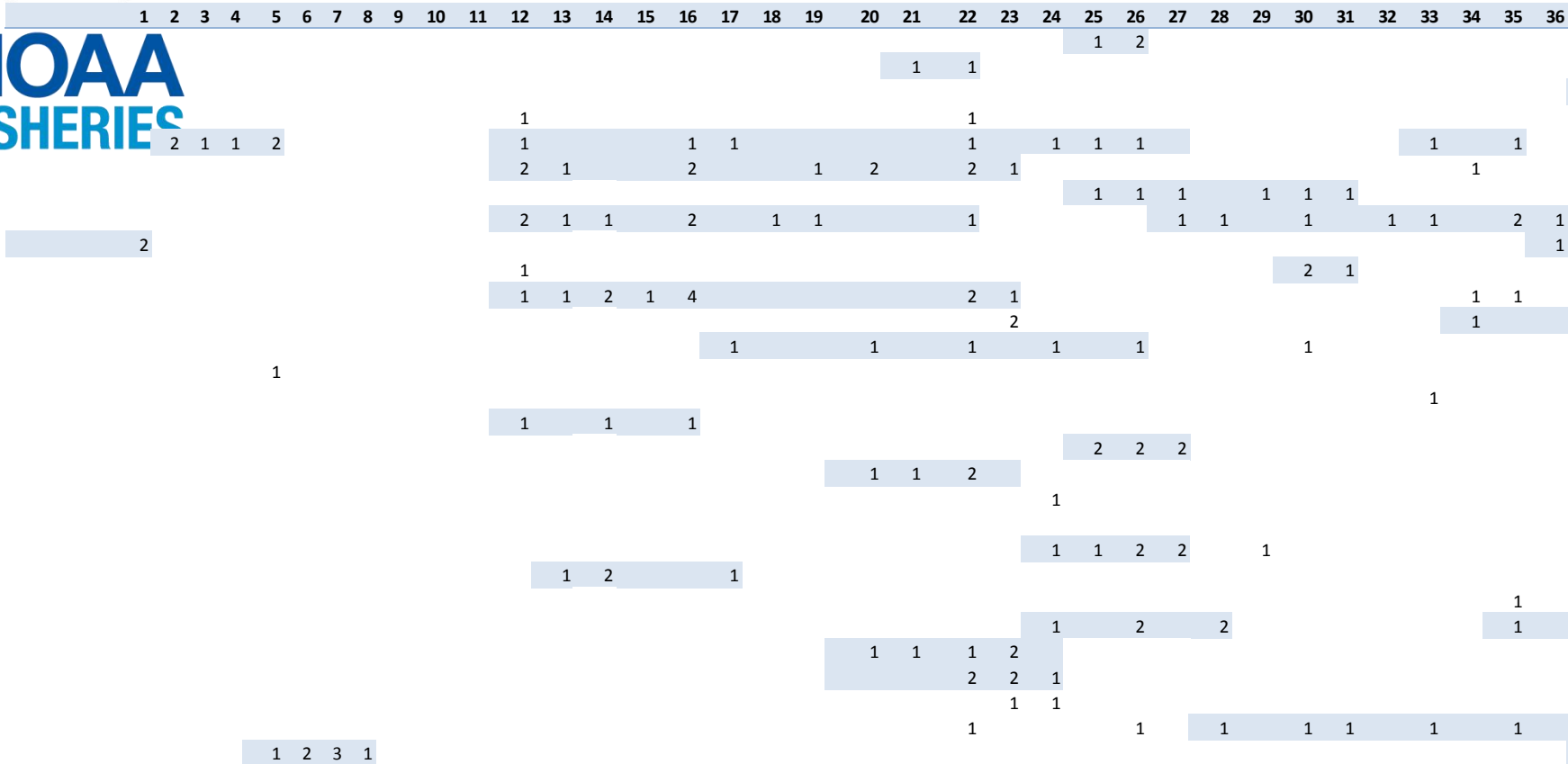


2013-2014 EM Pilot Project

How many vessels?

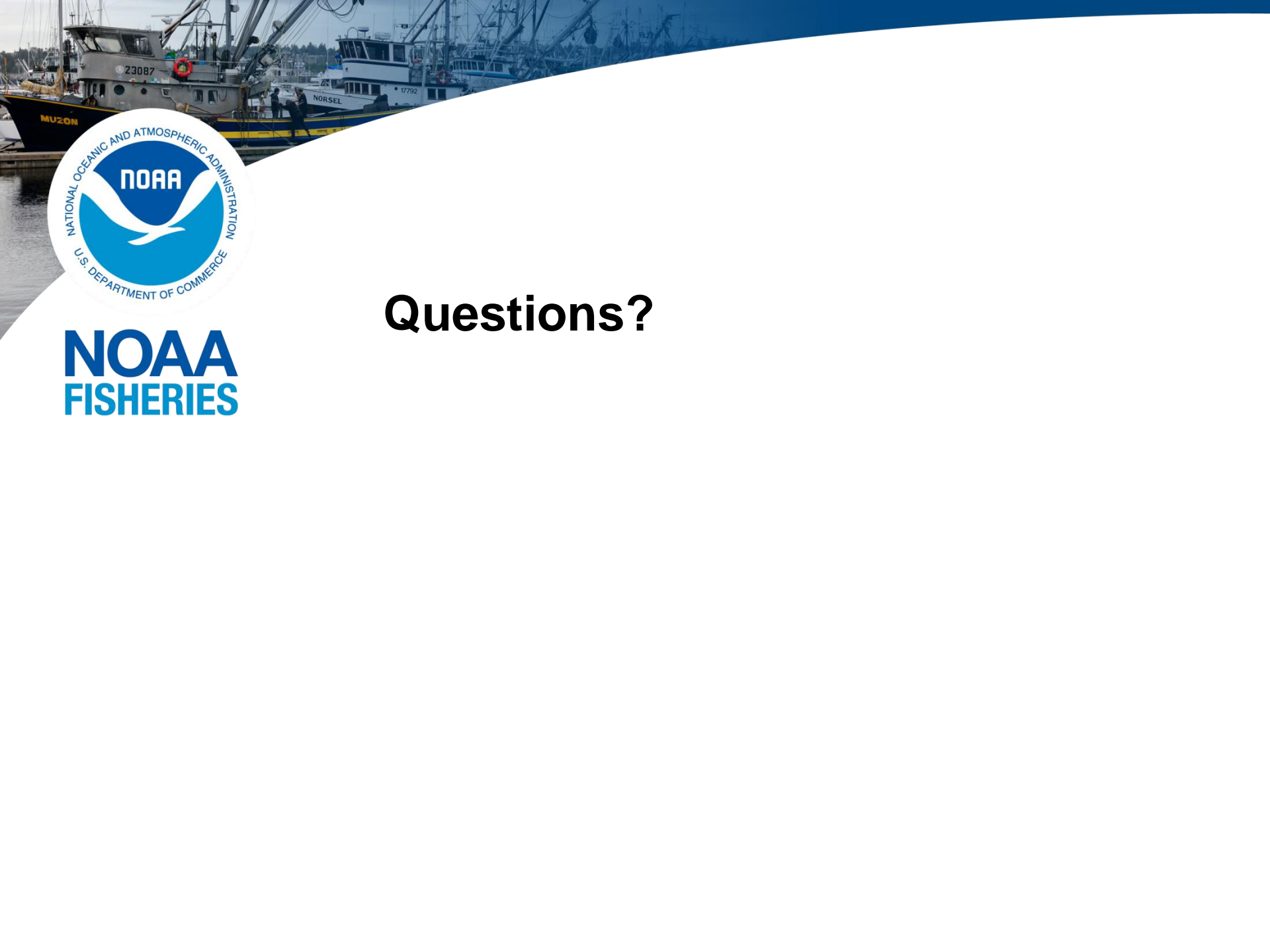
**NOAA
FISHERIES**

1 2 3 4 5 6 7 8 9 10 11 12 13 14 15 16 17 18 19 20 21 22 23 24 25 26 27 28 29 30 31 32 33 34 35 36



1 2 3 1

1



NOAA
FISHERIES

Questions?



NOAA
FISHERIES

Behind the Curtain EM Accomplishments in 2013

Electronic Monitoring Logging System (EMLS)

- Provides for data entry of EM data
- Integrates data into NORPAC
- Allows integration into Catch Accounting System



Building Infrastructure

- Data Management (FIS Funding)



Alaska Fisheries Science Center

NATIONAL MARINE FISHERIES SERVICE - NOAA FISHERIES

EMLS Home

Electronic Thumb Counter

Manage Camera ▾

Manage Longline Set

Manage Data ▾

farron.wallace

Logout

Select Camera and Vessel



Select Trip



Select Haul

Select EM Camera and Vessel

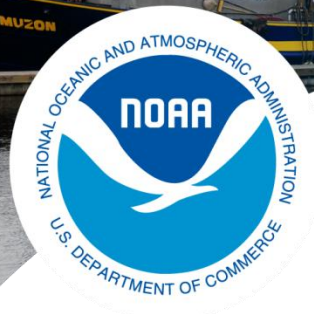
Go to EMS Home

Cannot find camera vessel combination?

Search in Deployment Records

No data found.

Next to Select Trip



**NOAA
FISHERIES**

Behind the Curtain EM Accomplishments in 2013

Developed a Stereo Camera systems designed specifically for fishery data collection

- Support automation for capturing specific catch events

Supports Catch Estimation

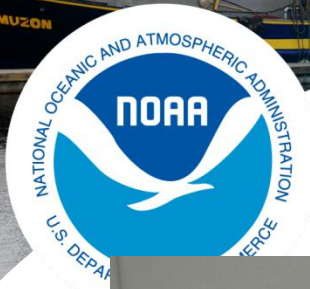
- Supports collection of high quality images of fish

Cost Efficiency

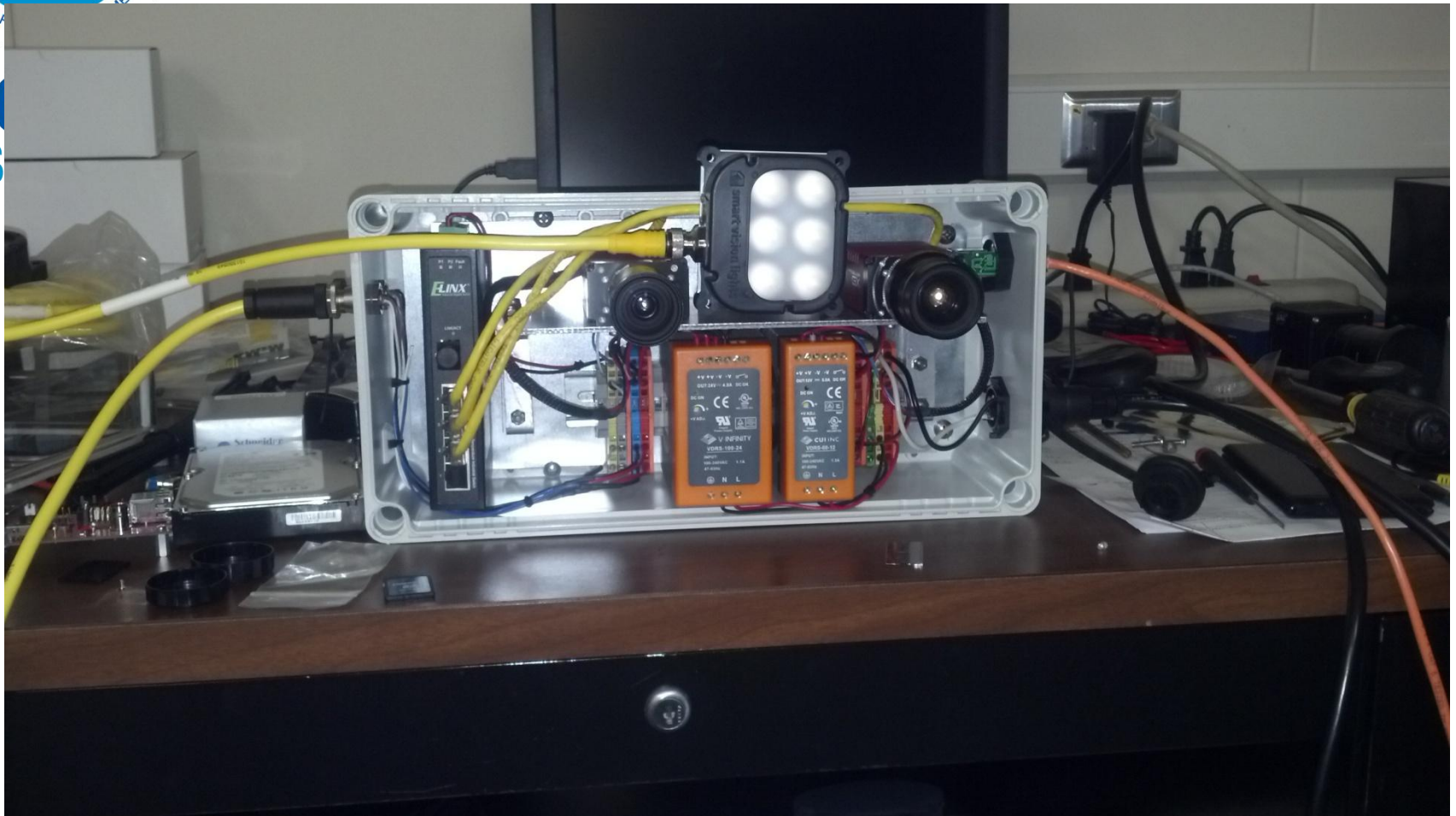
- Supports automation of length composition

Building Tools

- Stereo Camera's (PSMFC Funding)

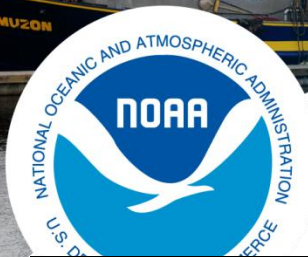


NO
FIS

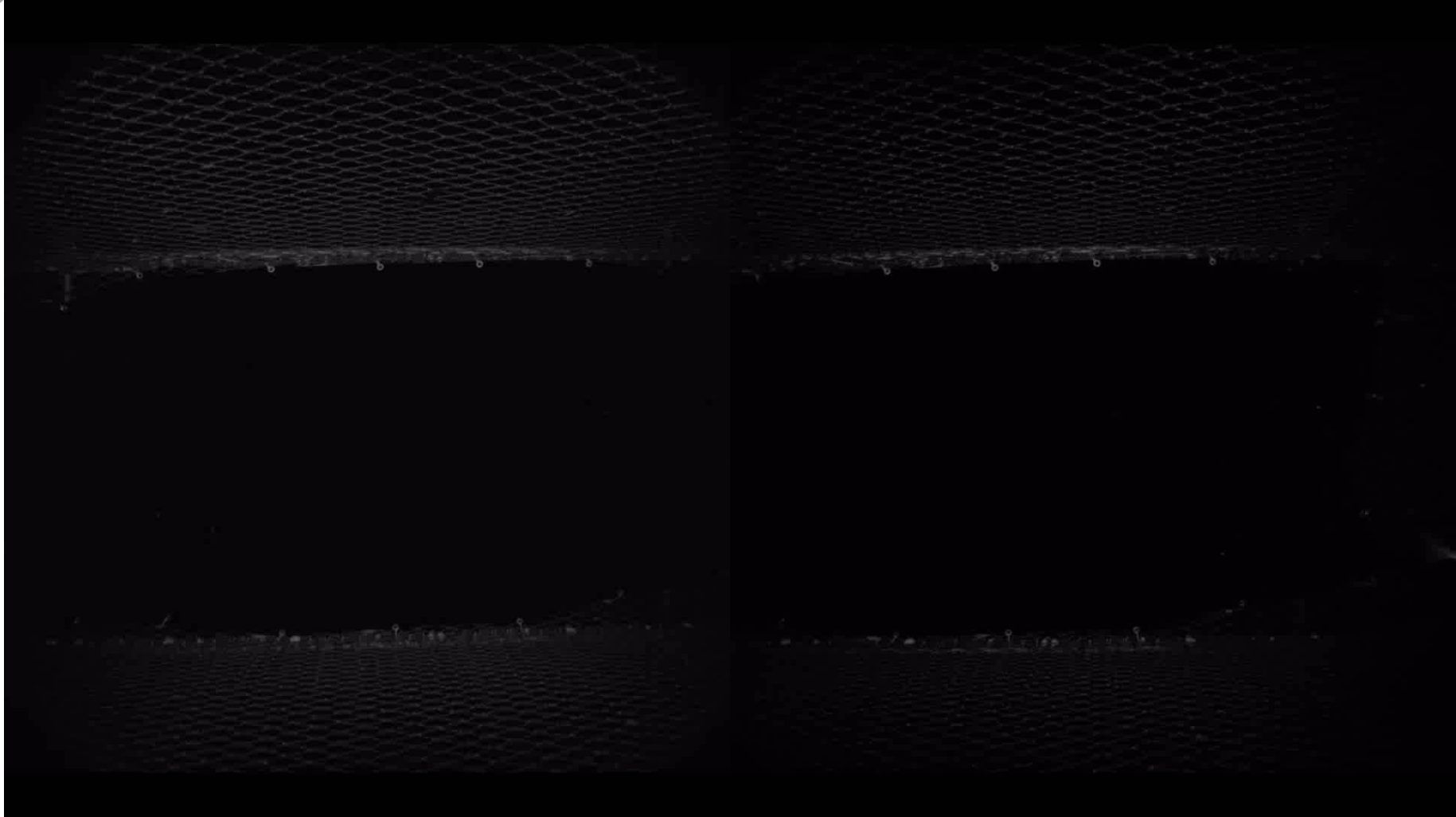




Building Tools



- MACE





Building Tools

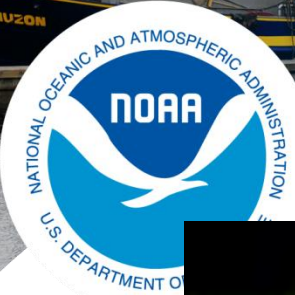


- MACE





Building Tools

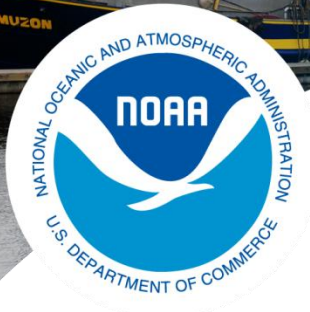


- MACE

NOAA
FISHERY



Behind the Curtain EM Accomplishments in 2013

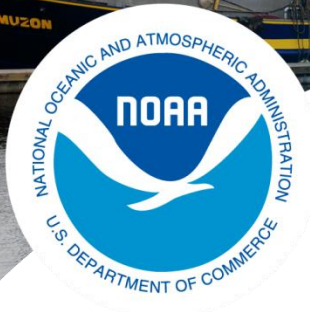


**NOAA
FISHERIES**

**Developed and Submitted Numerous Funding
Proposals in 2013 to support EM projects in 2014
and beyond.**

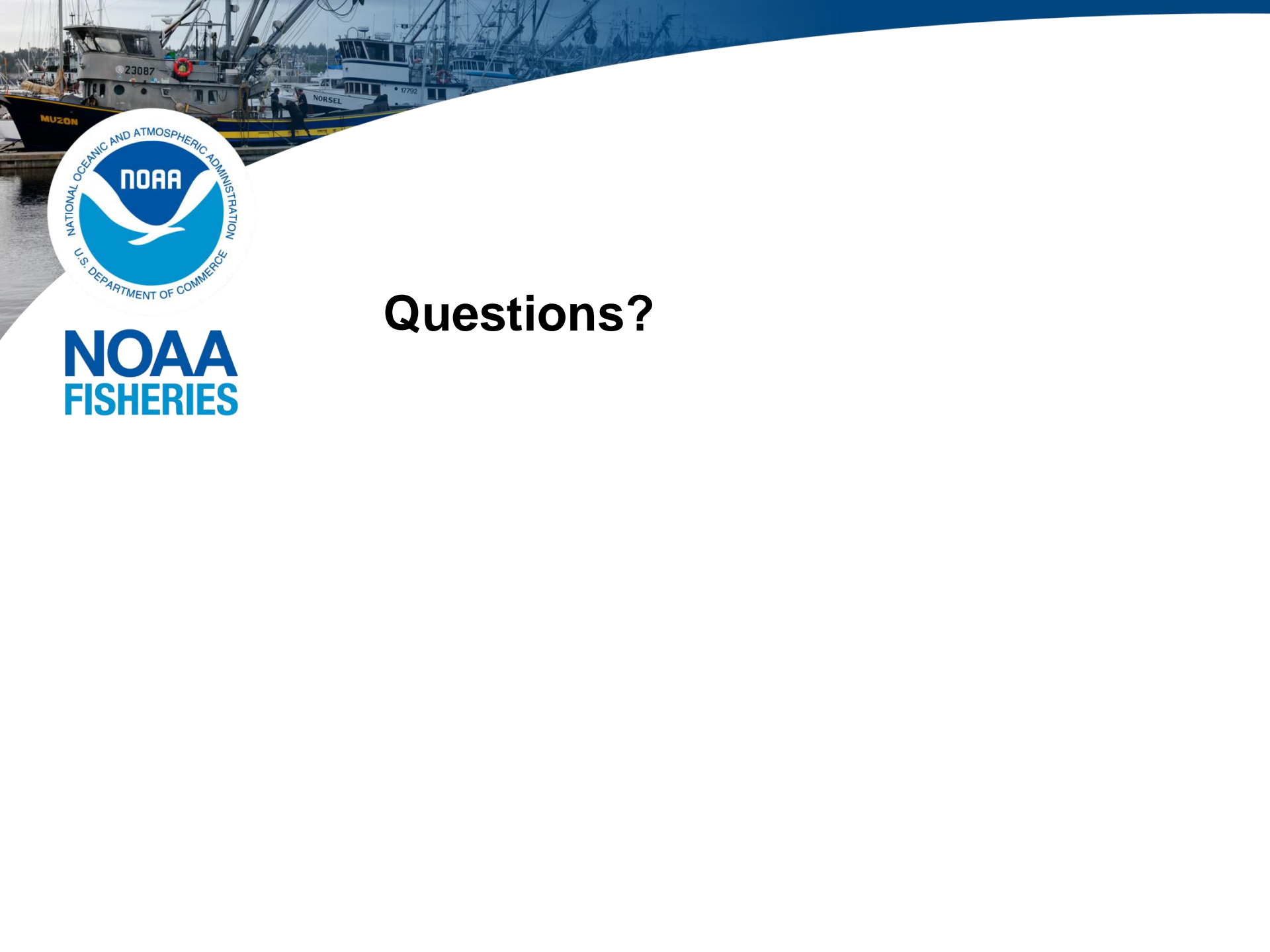


EM Projects in 2014



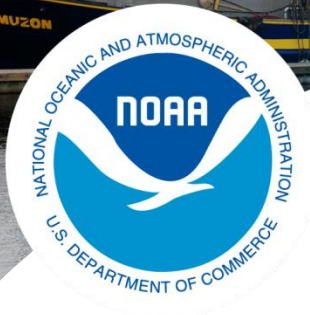
NOAA
FISHERIES

- 1. Automated delivery of e-logbook data**
- 2. Develop/test stereo camera chute system
(Partially Funded)**
- 3. Develop/test stereo camera catch monitoring
system**
- 4. Application Development
(Partially Funded)**
- 5. Integrating sensor data and e-logbooks
(Unfunded at this time)**



NOAA
FISHERIES

Questions?



NOAA
FISHERIES

Key considerations for collecting scientific information using EM

Quality Assurance

- Management plan to ensure integrity of the data

The System

Quality Control

- Assess to quality of the analytical data

The Tools

Clear Objective

- Study design to collect and process the data

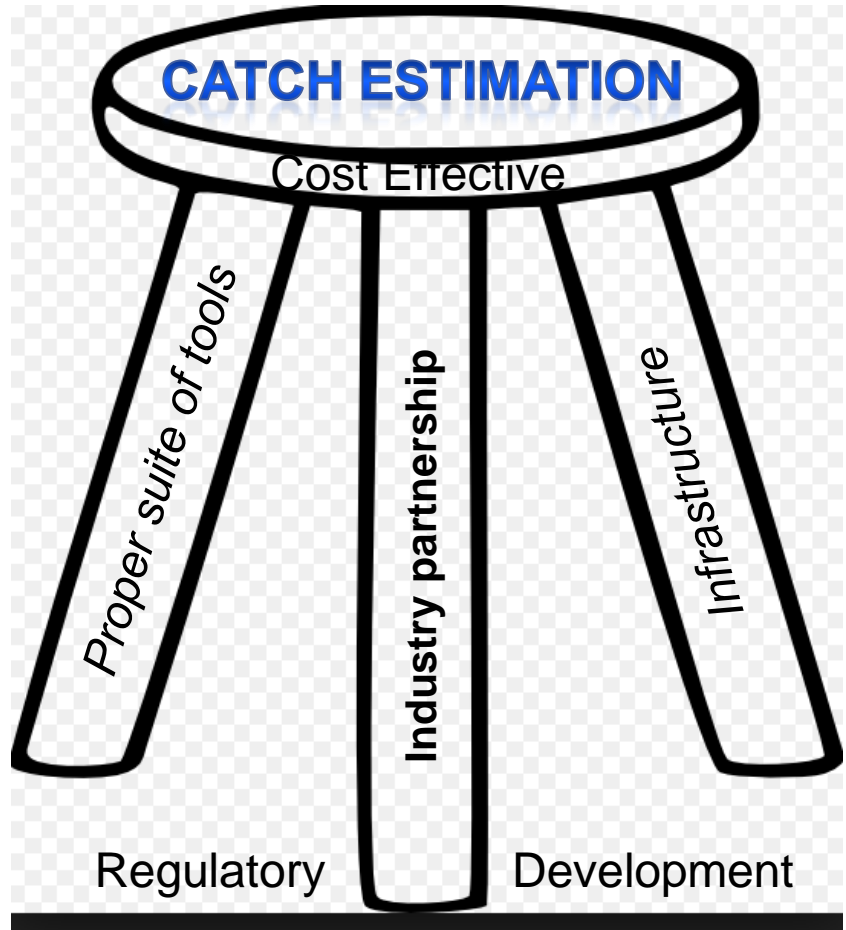
The Process



Key considerations for implementing an EM program



**NOAA
FISHERIES**





NOAA
FISHERIES

Building Partnerships

Outreach Meetings

Cooperative Research

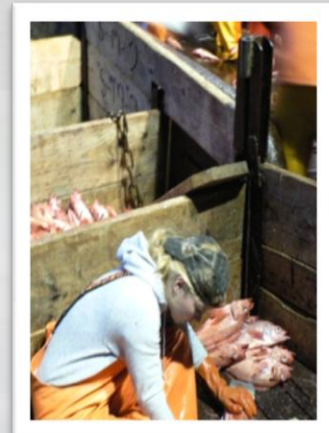
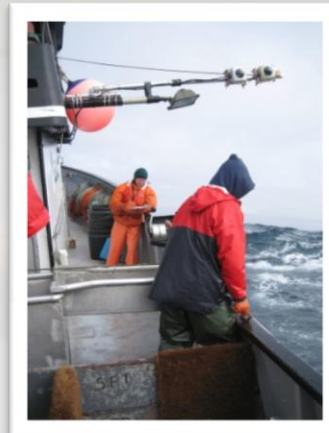
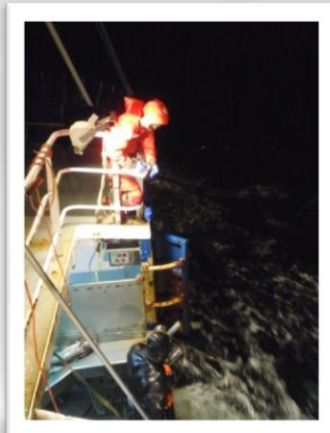
OAC?

Workgroup?



2014 Observer Program

Changes to support sustainable fisheries





NOAA
FISHERIES

Why are *e-logbooks with sensors* important?

1. Serves as ER System that independently collects set, haul positions and effort for observed and unobserved vessels. (potential VMS replacement?)
2. Provides information to validate EM data and improve catch estimation.
3. Base data collection system where a camera system could be “plugged in”
4. Provides data to develop fisheries depended system for estimating CPUE **where total time** is known.
5. It can be automated and is cost effective.