

2020 Longline Survey – GOA/AI



Kevin Siwicke, Pat Malecha, Cara Rodgveller, Chris Lunsford
ABL/MESA

20/20 Vision

- Corona issues
 - No NOAA scientists
 - Contractor as Chief Scientist
 - Fewer special projects
 - About half as many fish tagged
- Other issues
 - Mechanical, weather, injuries, false positive, etc.

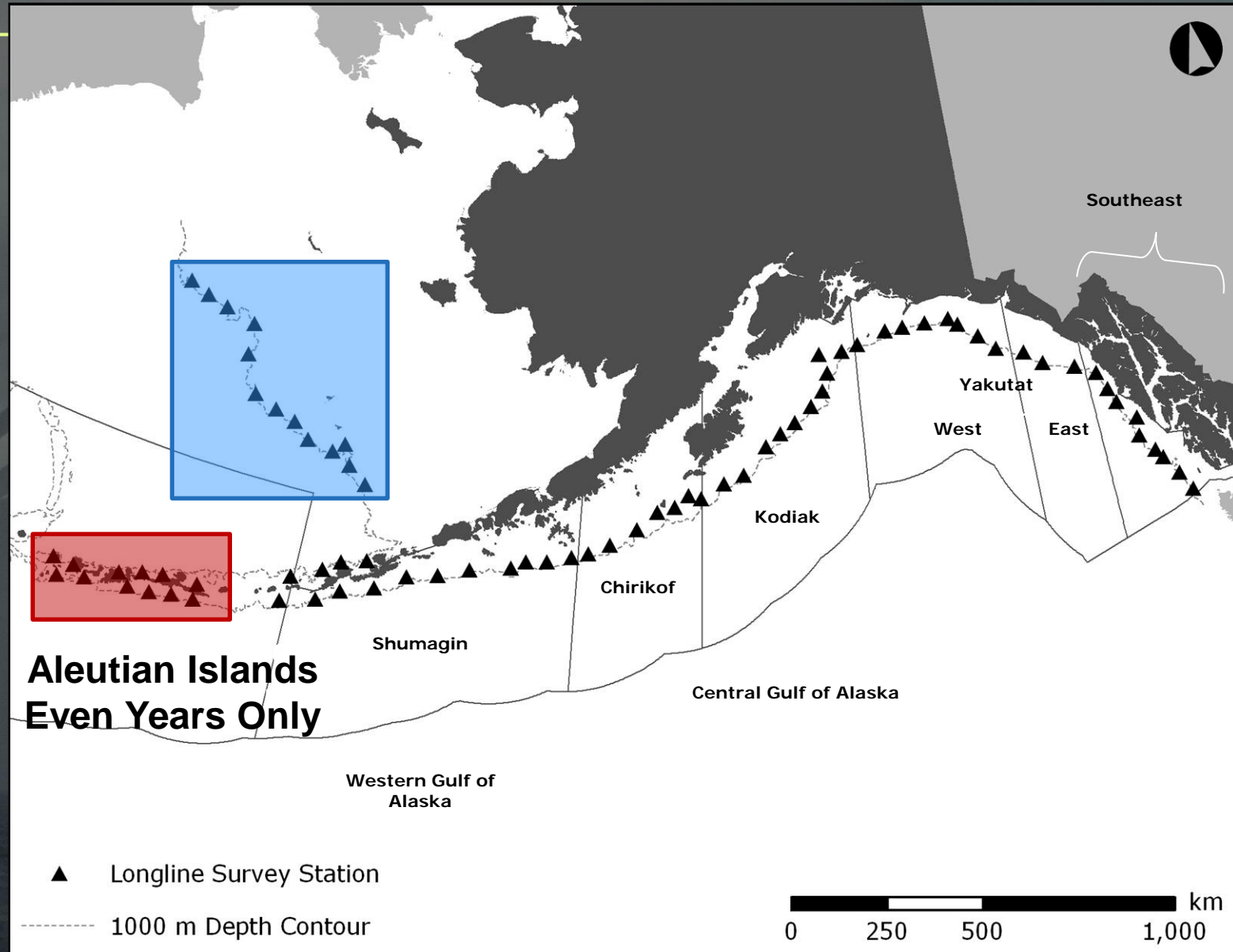


Plan Team Update

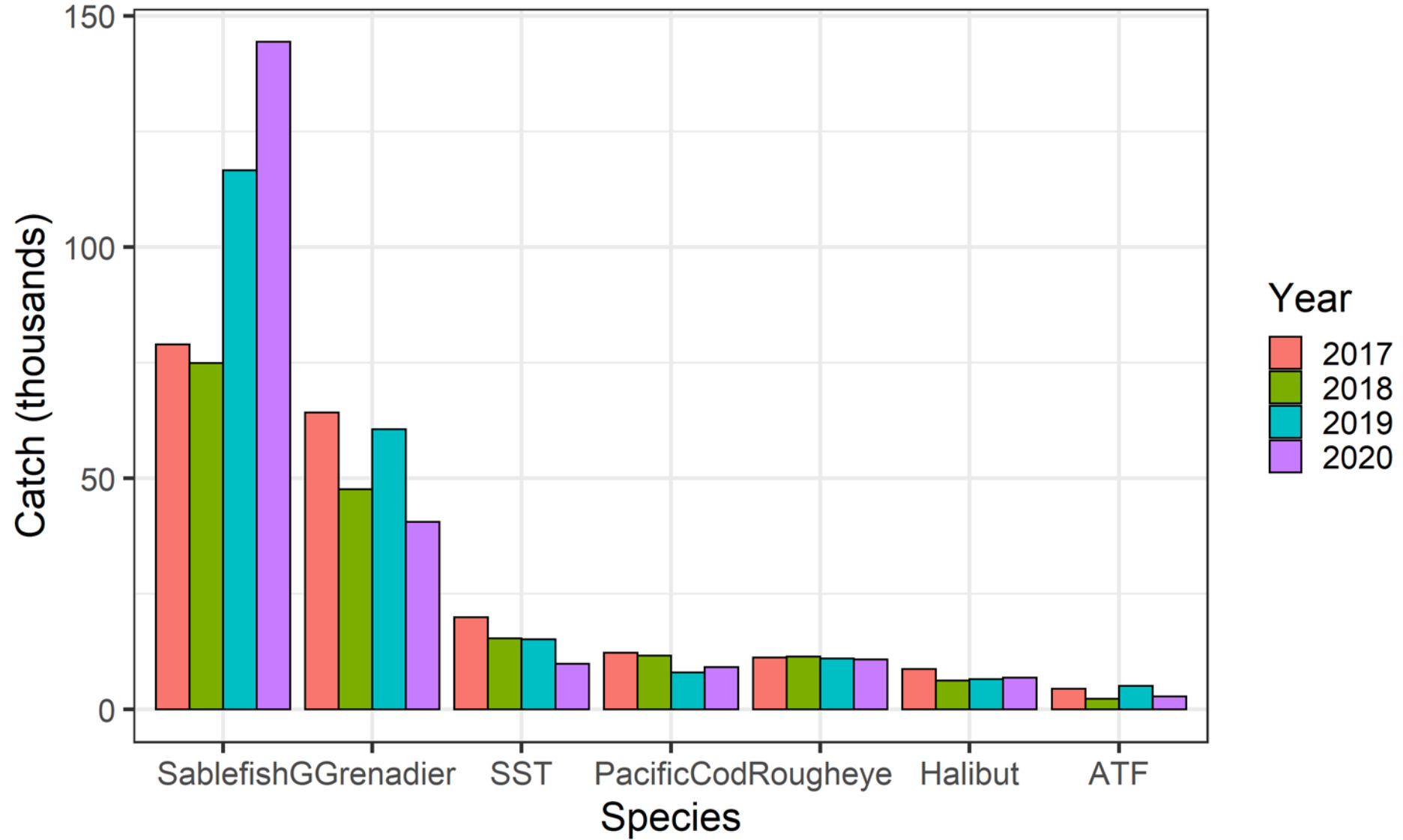


- 2020 Preliminary Relative Population Numbers (RPNs)
- 2020 Lengths
- Whale Interactions
- Survey Observations
- Data Uploaded to AKFIN

Survey Geographic Coverage



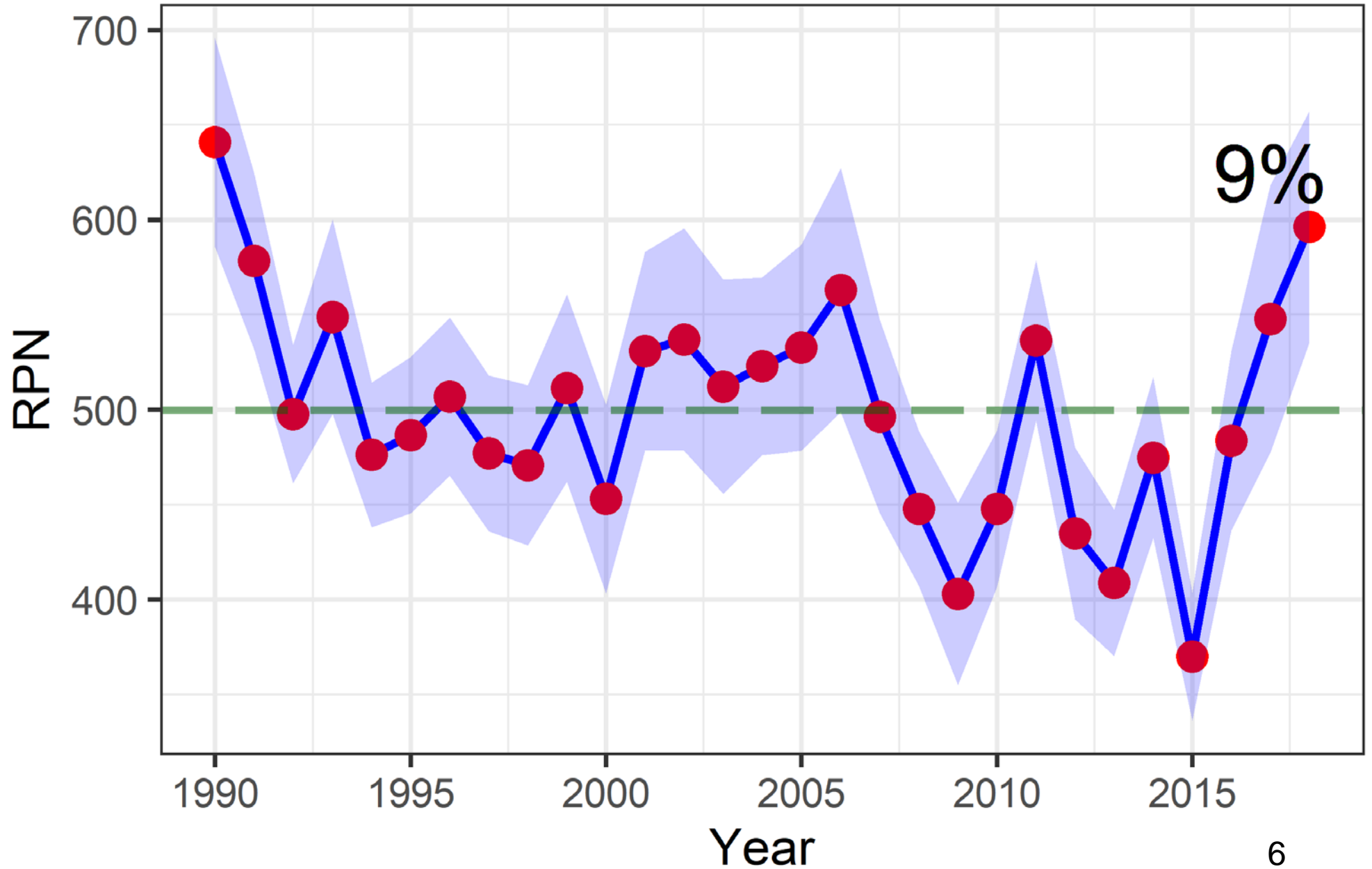
Recent raw catches by species



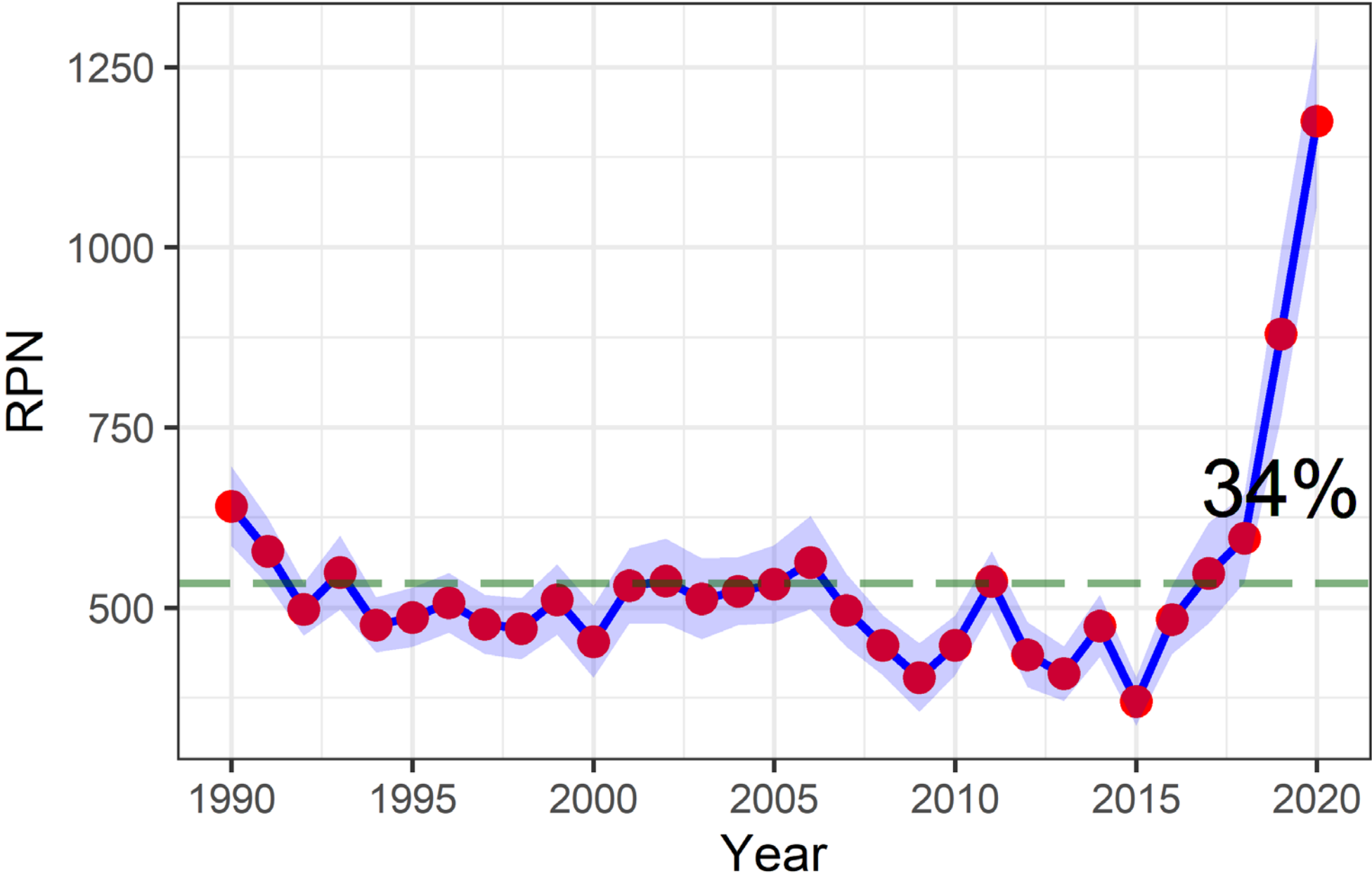
RPNs

Historical Context

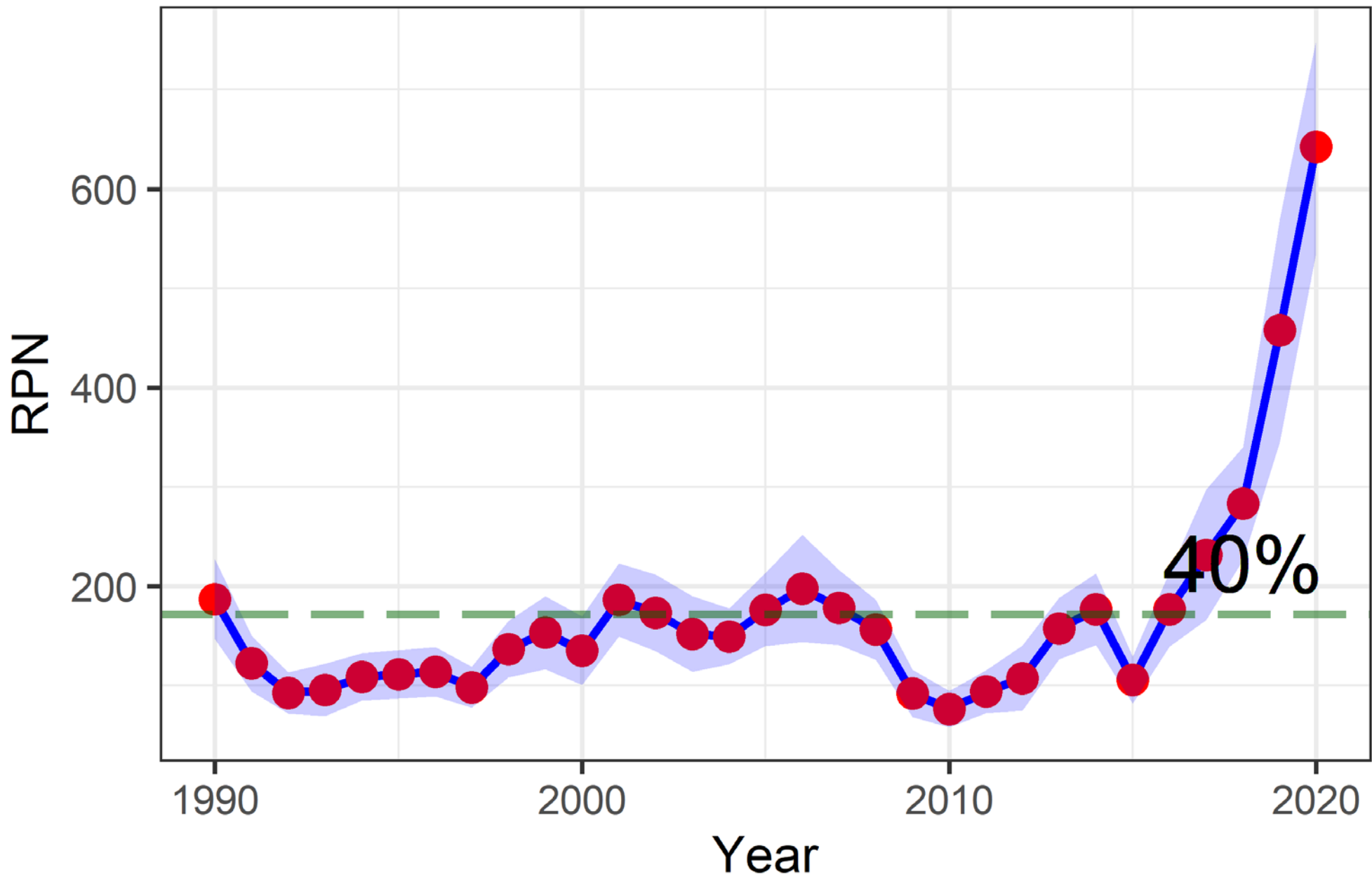
Sablefish longline survey RPNs



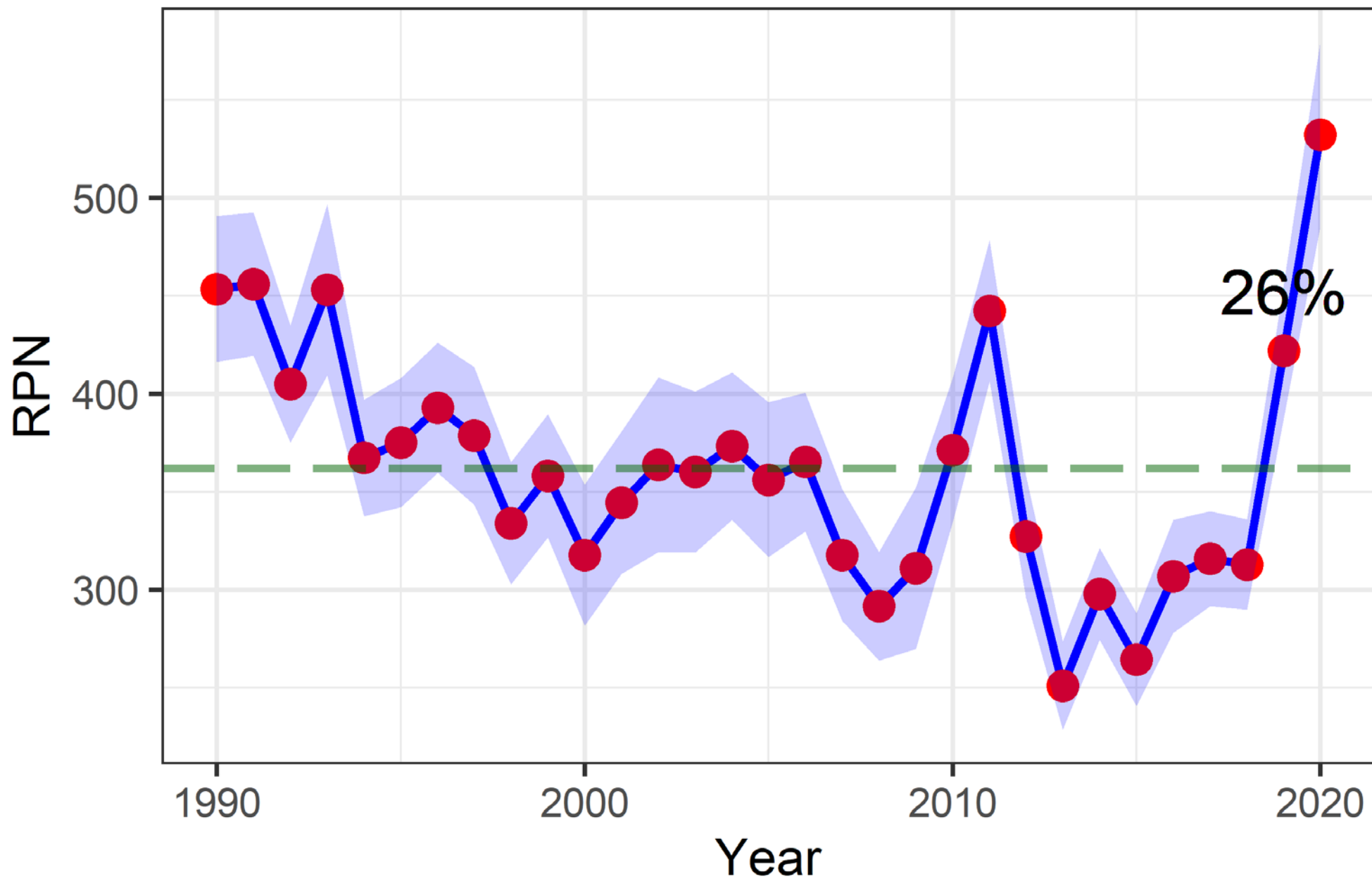
Sablefish longline survey RPNs



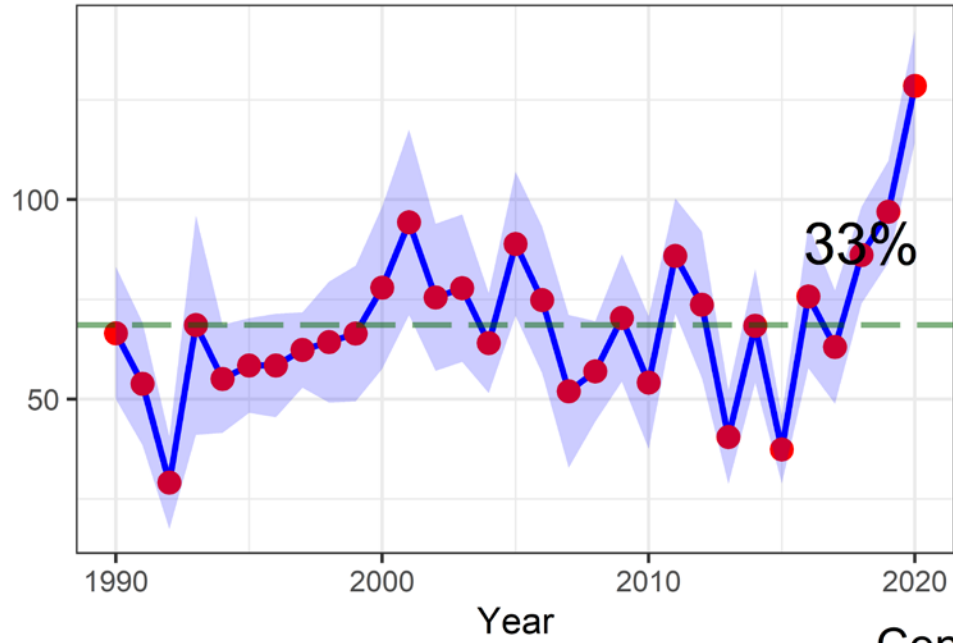
BSAI Sablefish longline survey RPNs



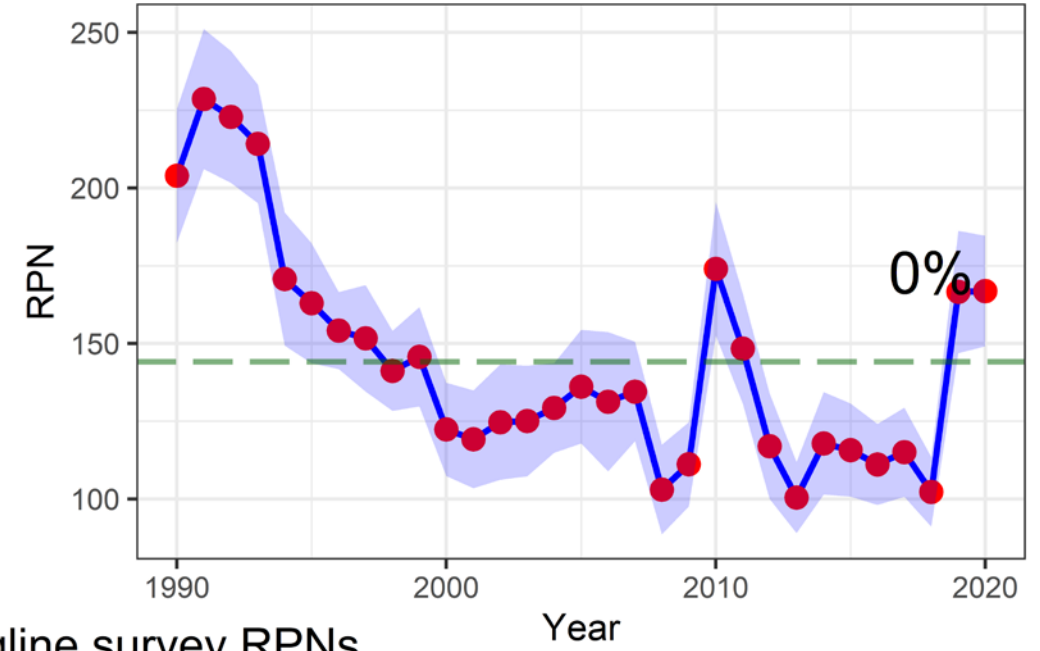
GOA Sablefish longline survey RPNs



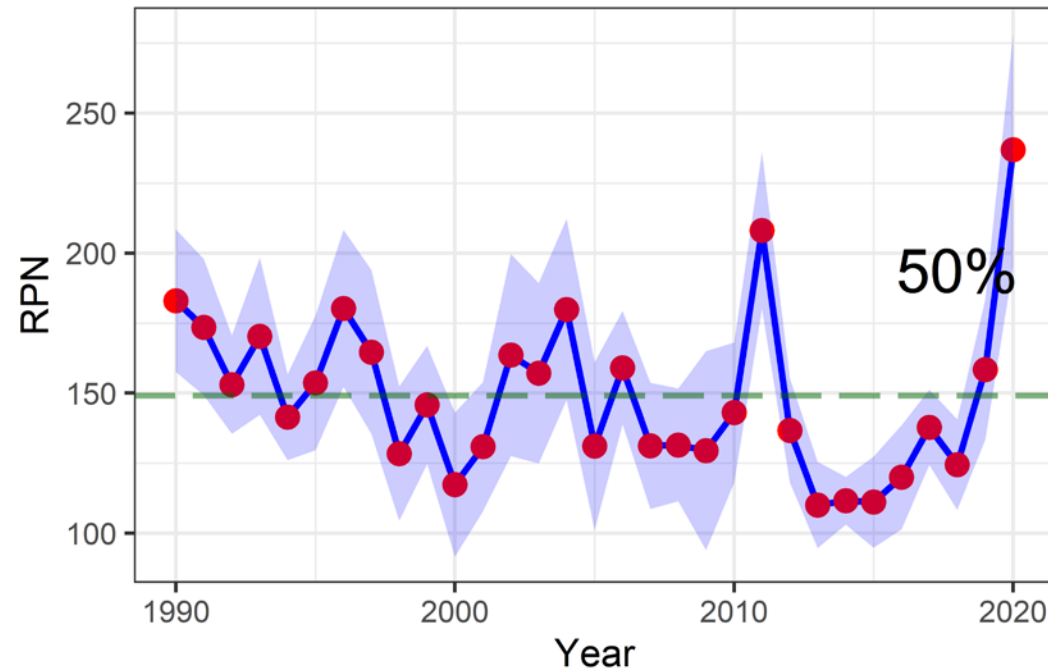
Western GOA Sablefish longline survey RPNs



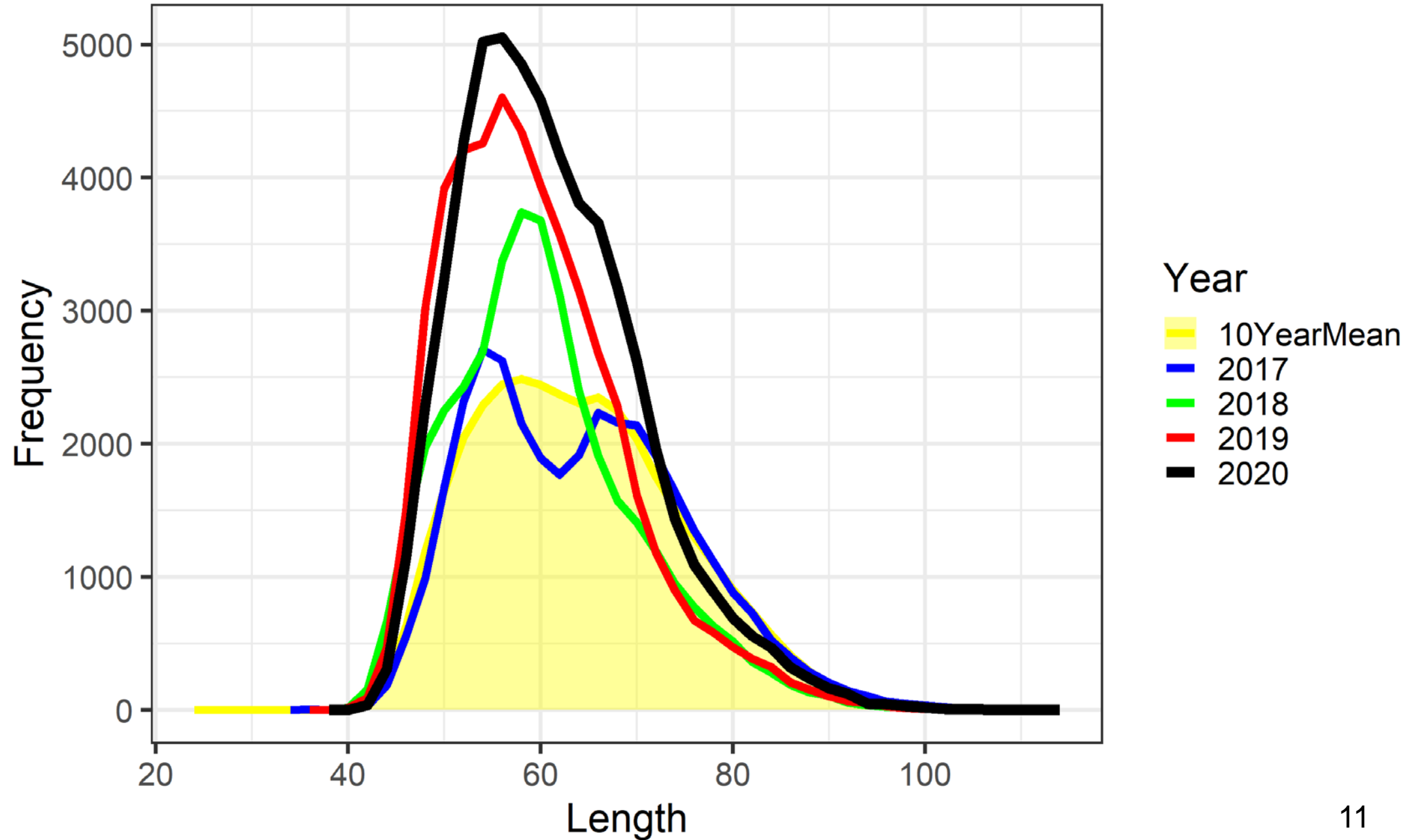
Eastern GOA Sablefish longline survey RPNs



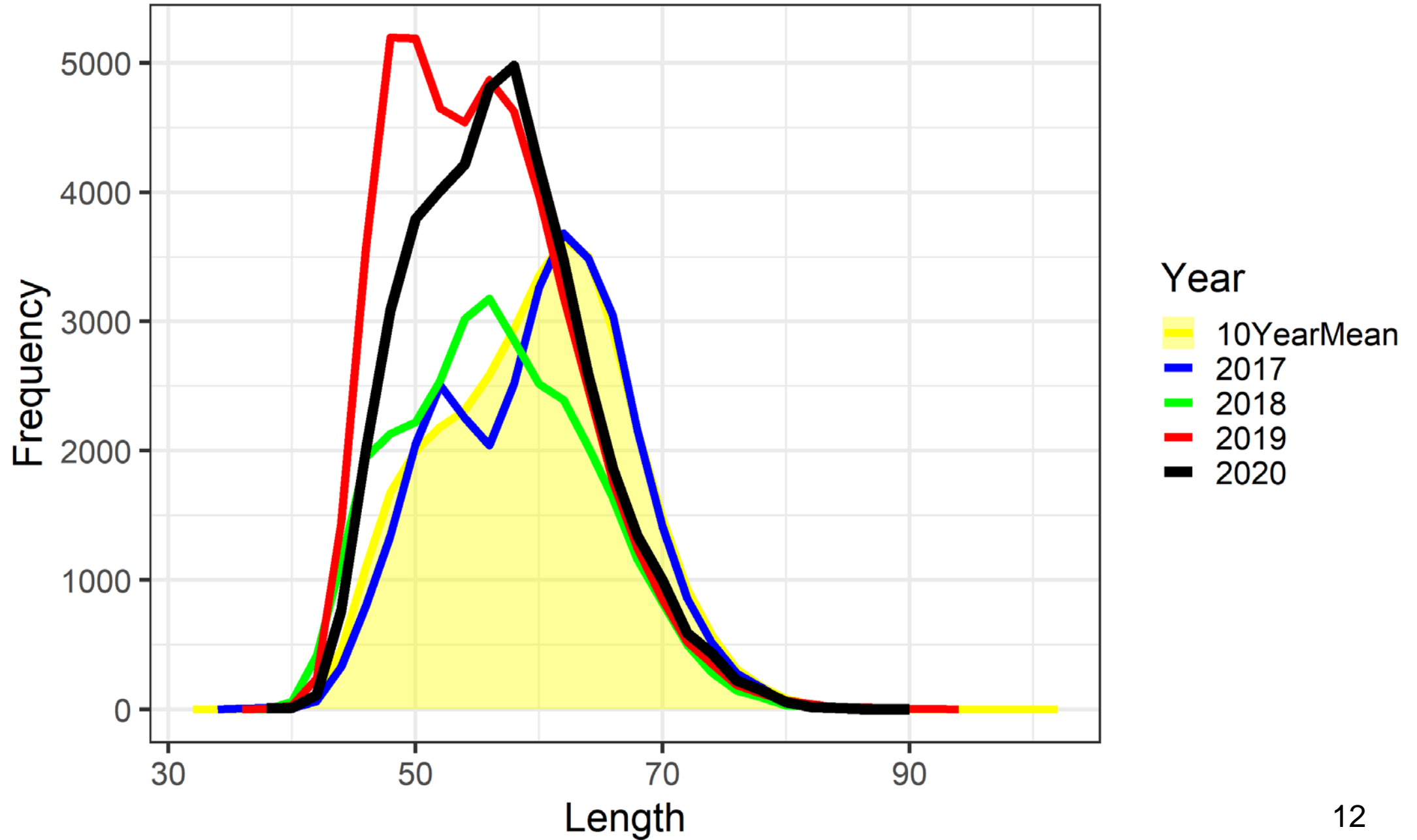
Central GOA Sablefish longline survey RPNs



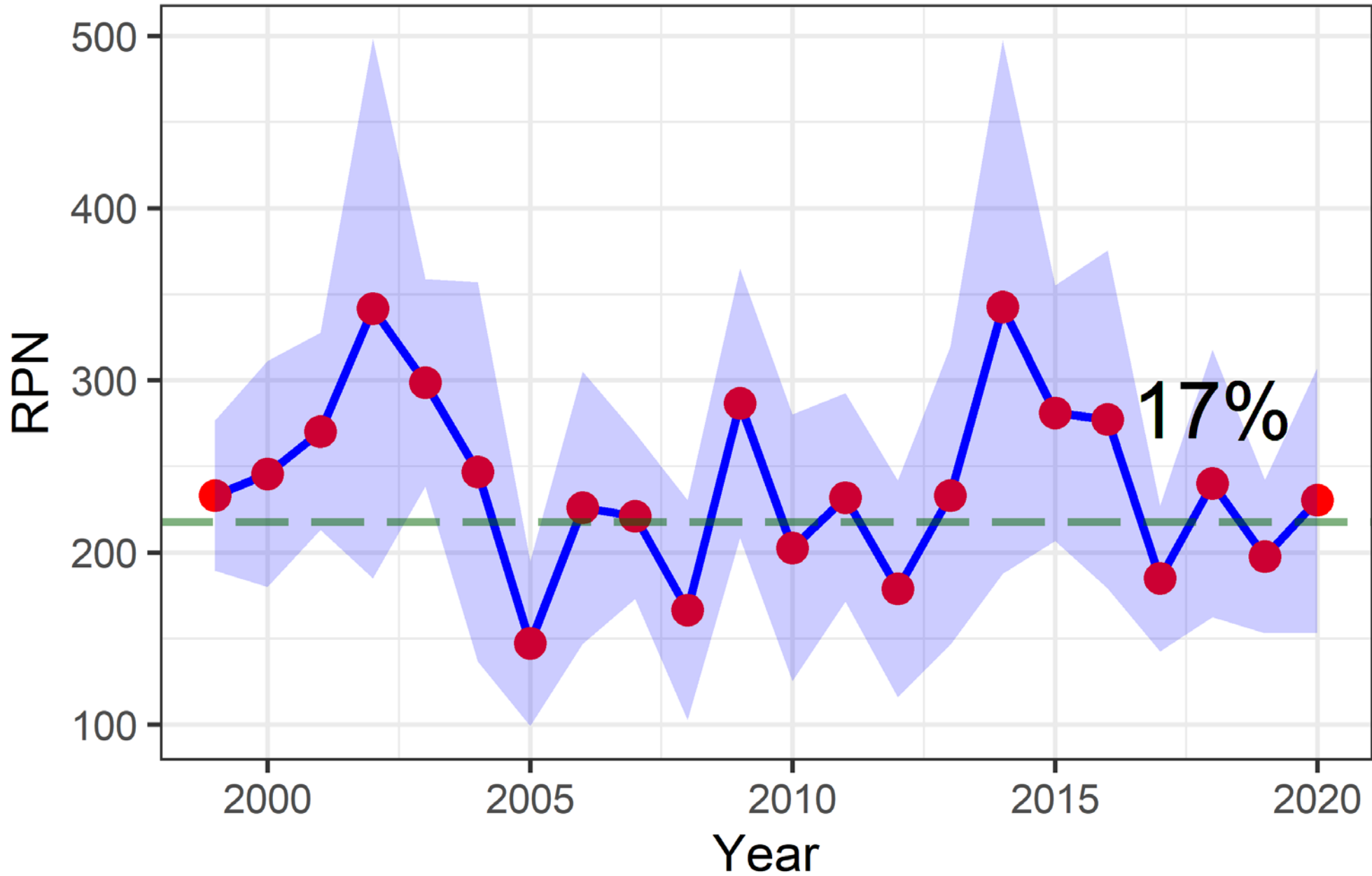
Recent female sablefish length frequencies



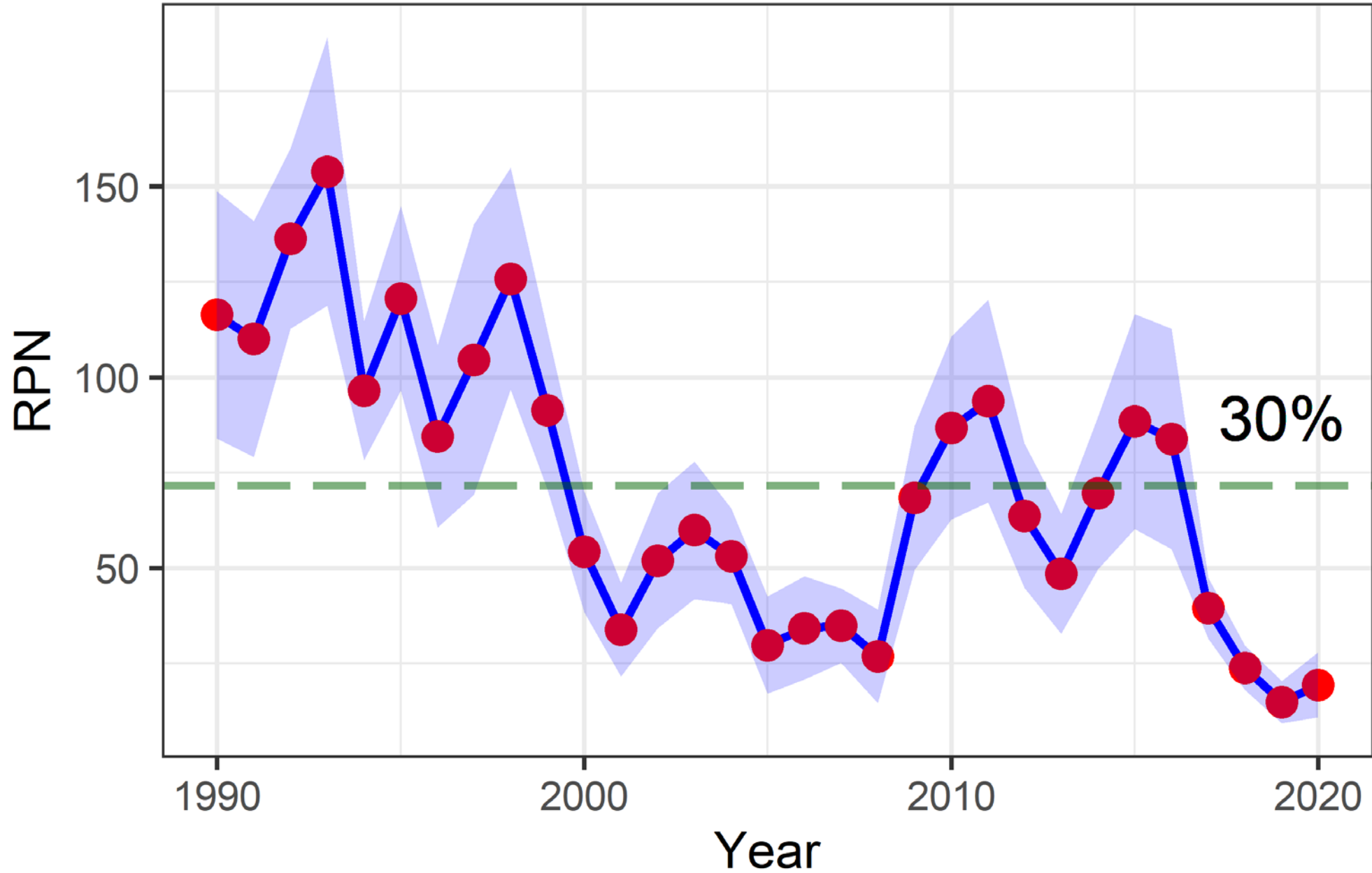
Recent male sablefish length frequencies



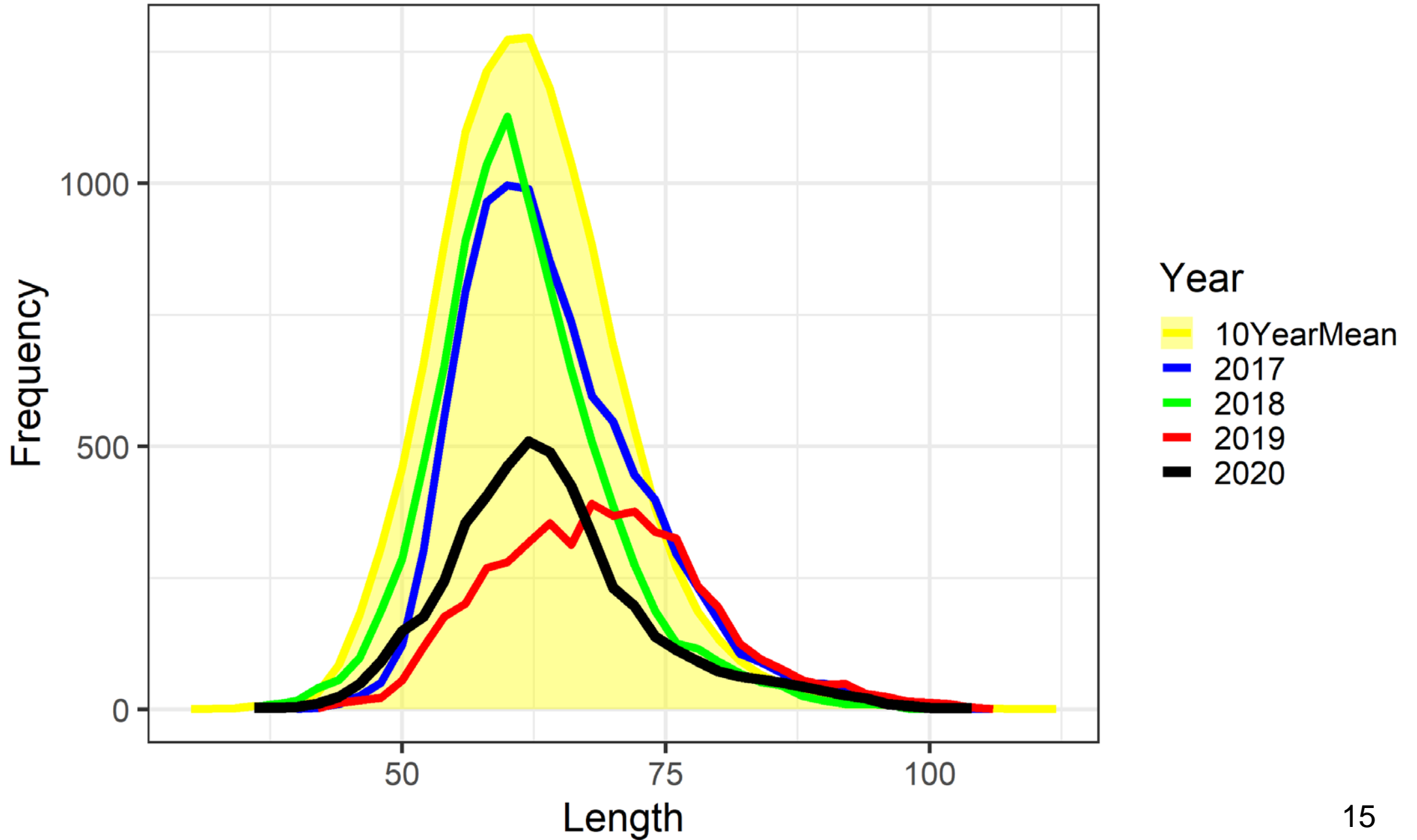
BSAI Pacific cod longline survey RPNs



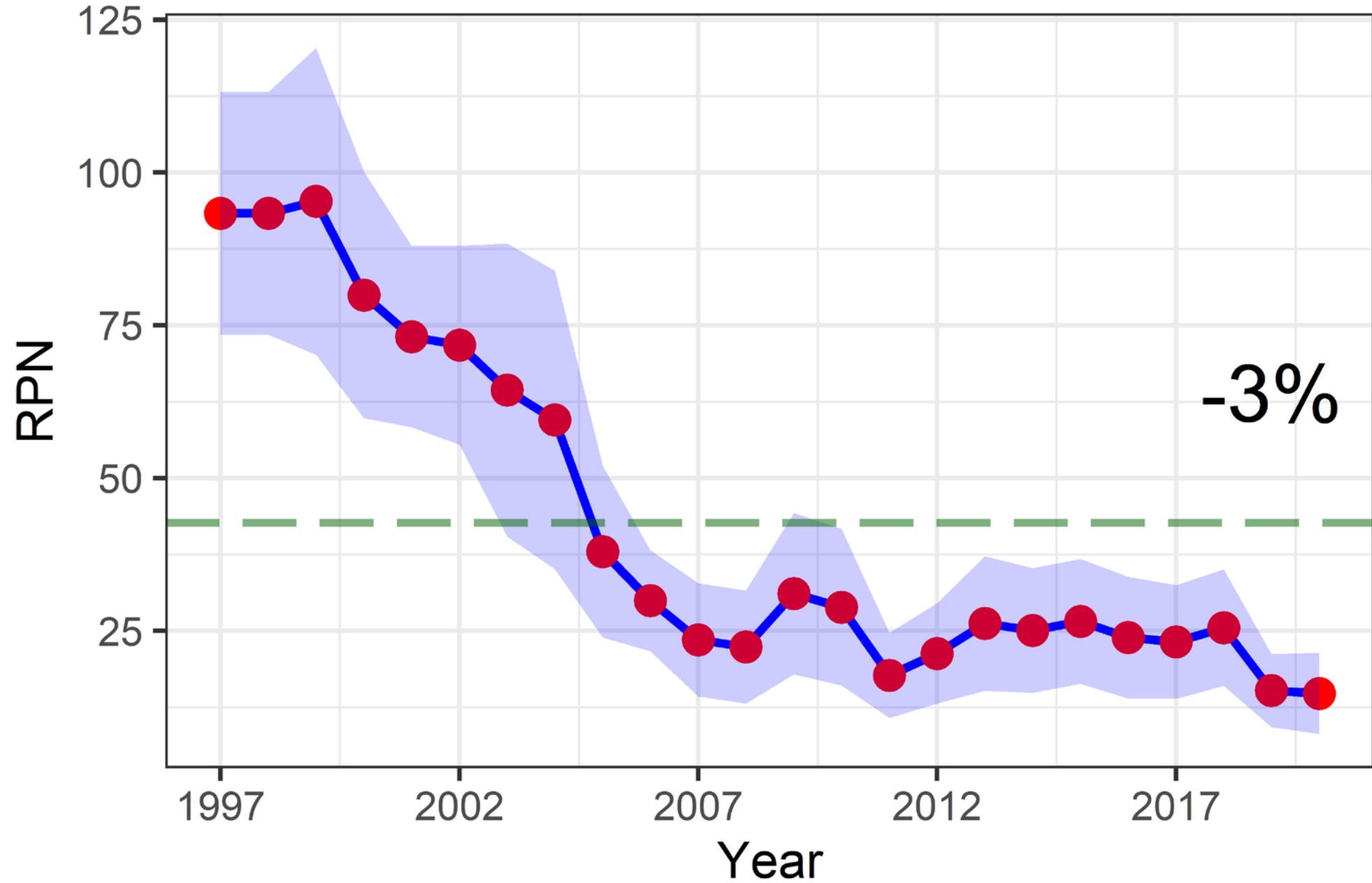
GOA Pacific cod longline survey RPNs



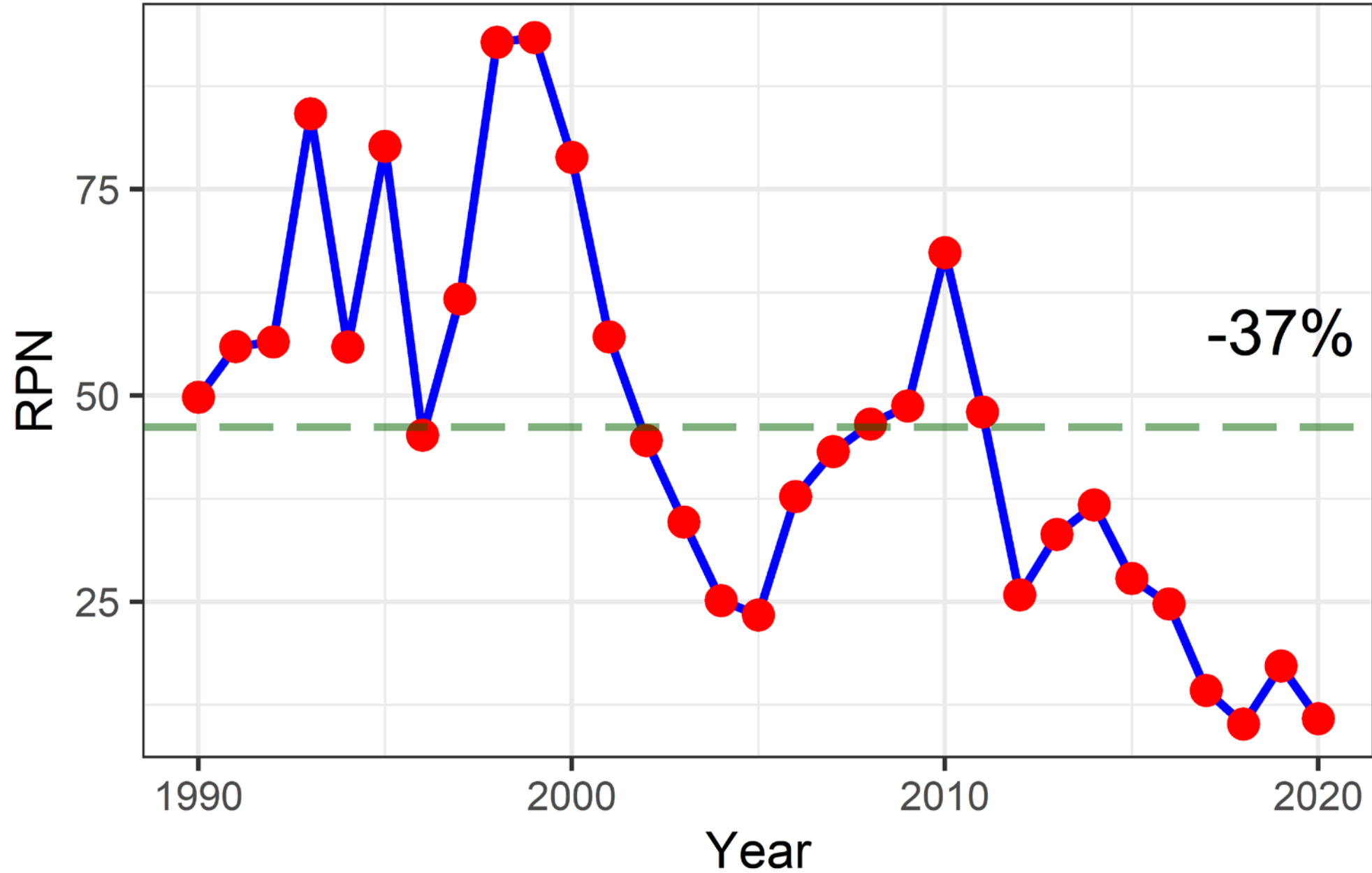
Recent P. cod length frequencies



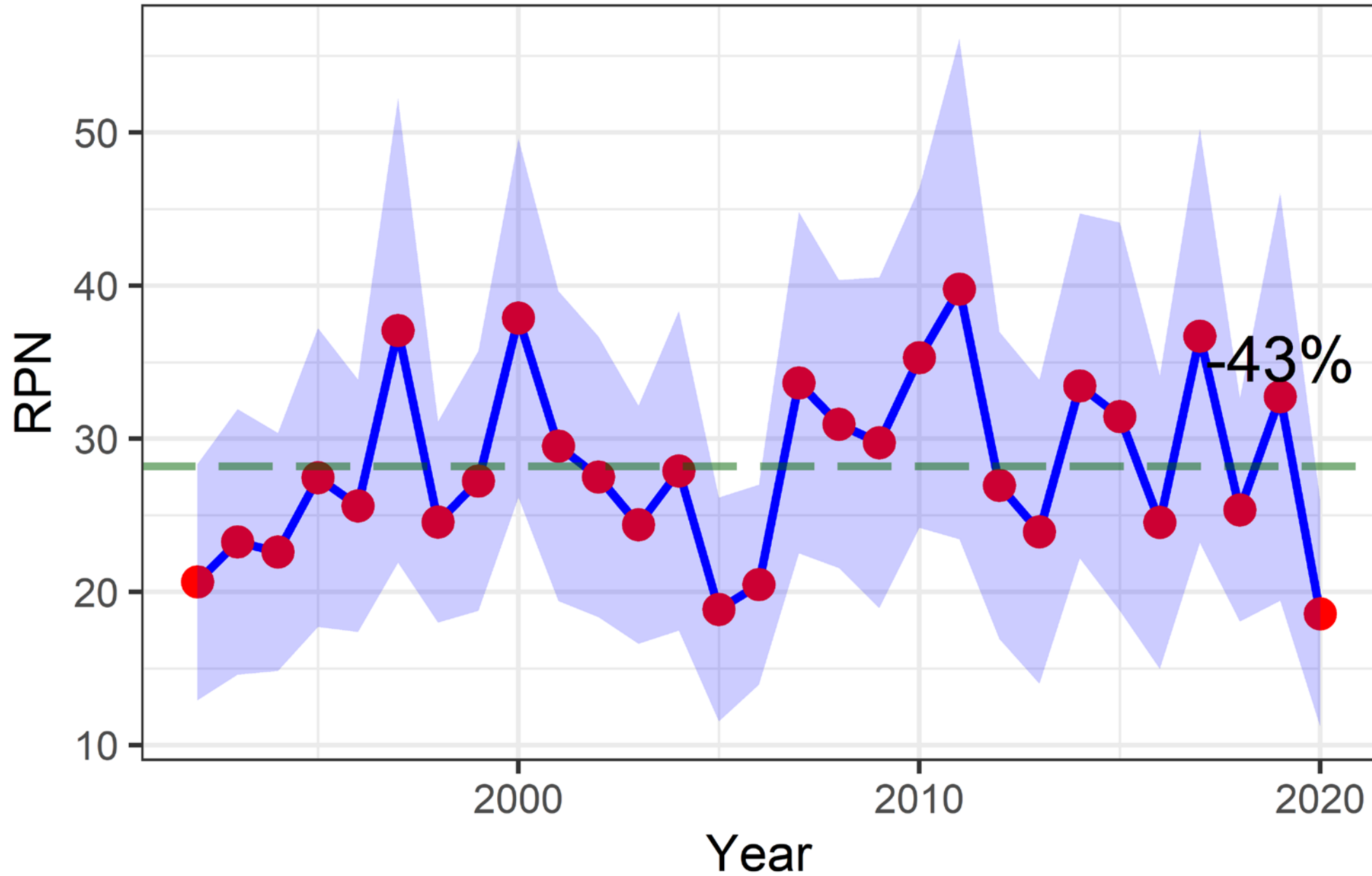
BSAI G. turbot longline survey RPNs



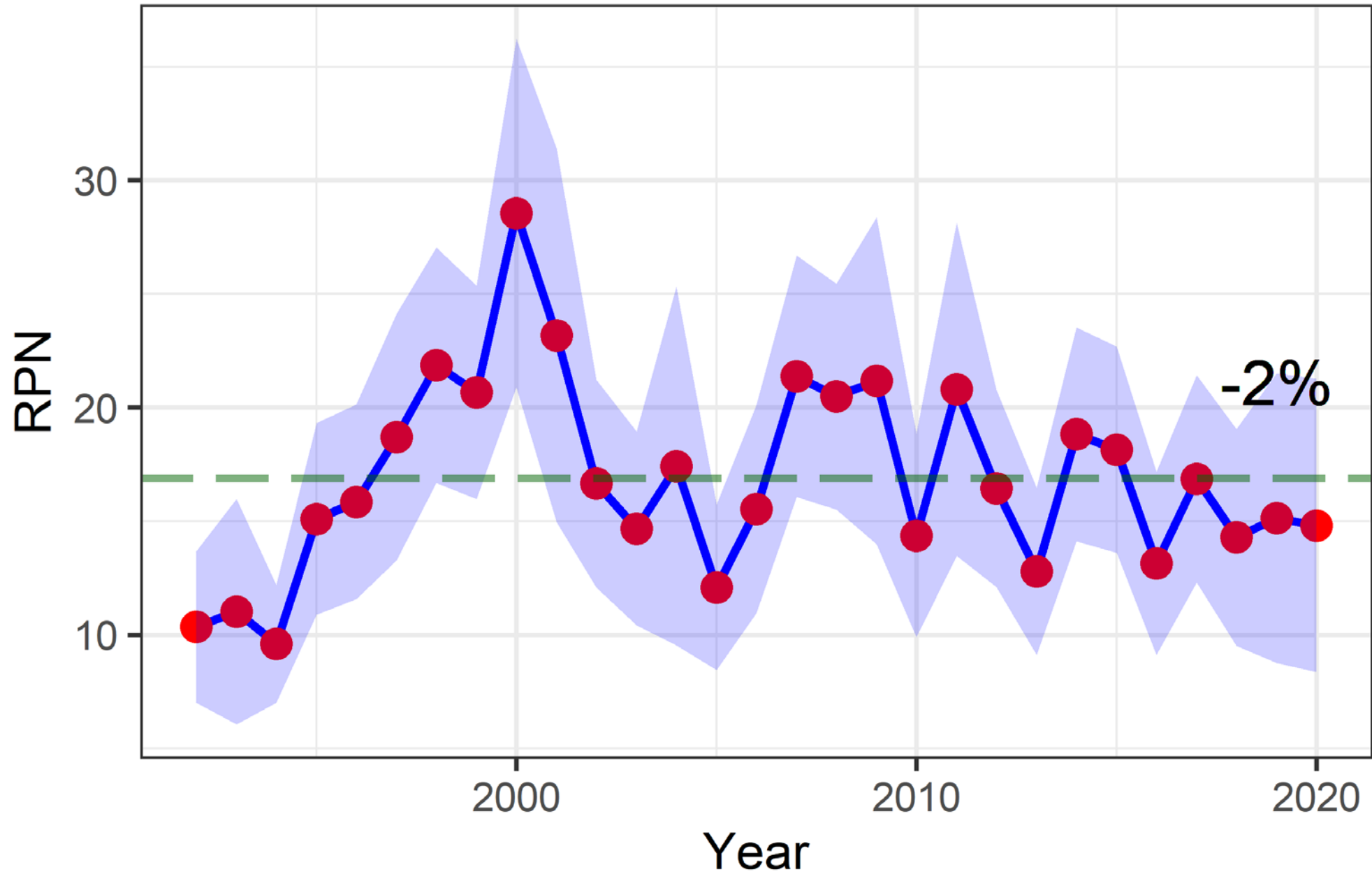
GOA Arrowtooth longline survey RPNs



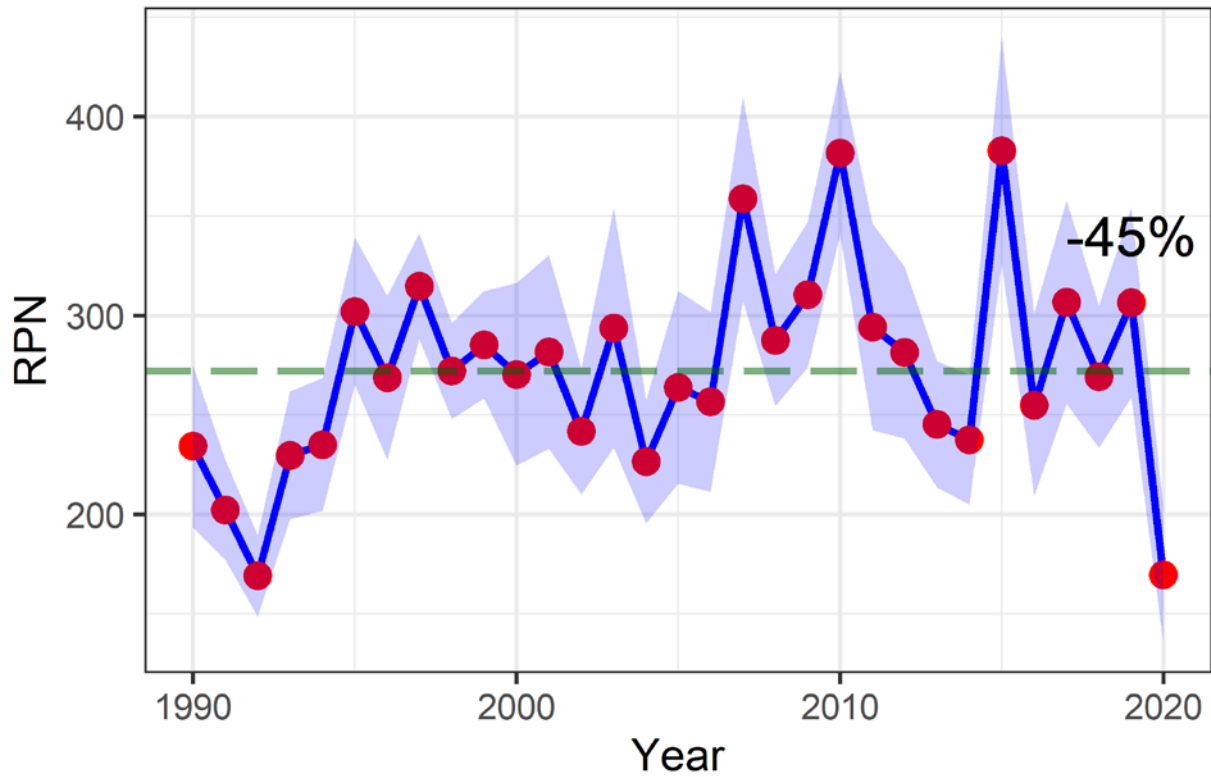
GOA Rougheye longline survey RPNs



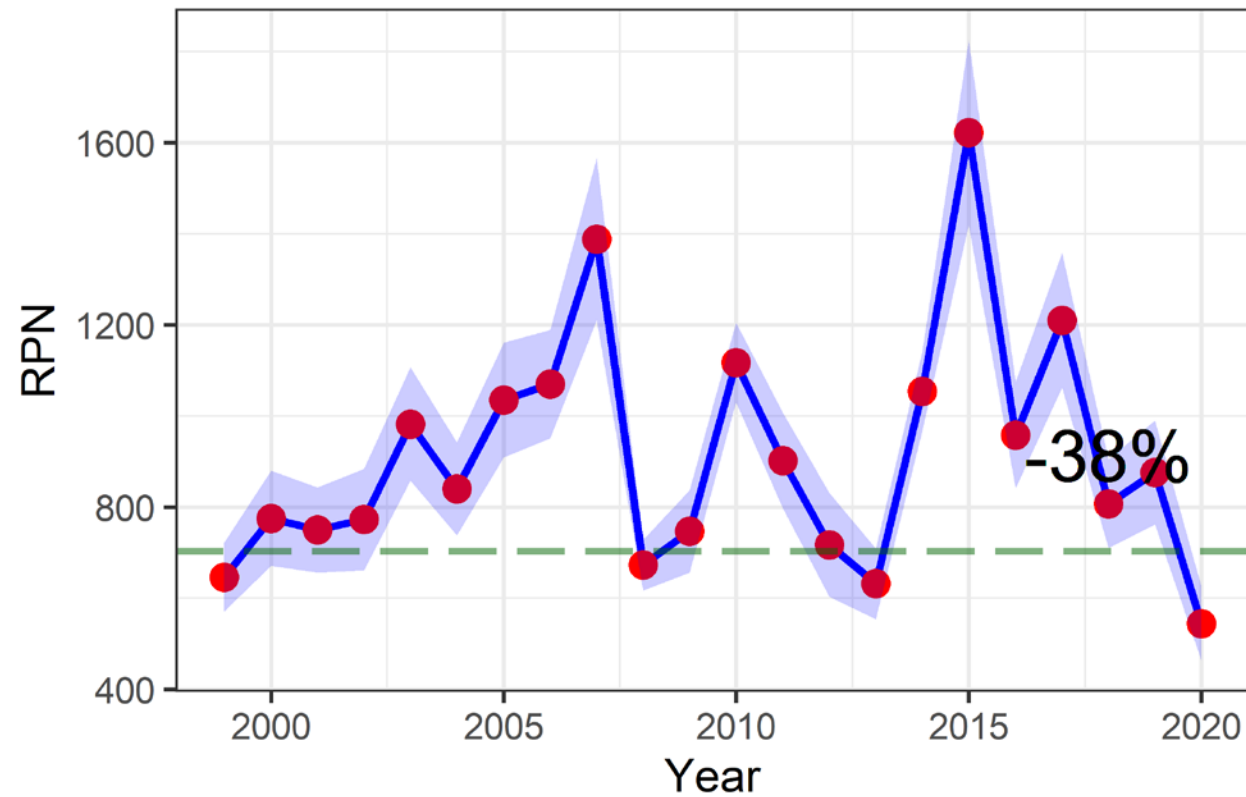
GOA Shortraker longline survey RPNs



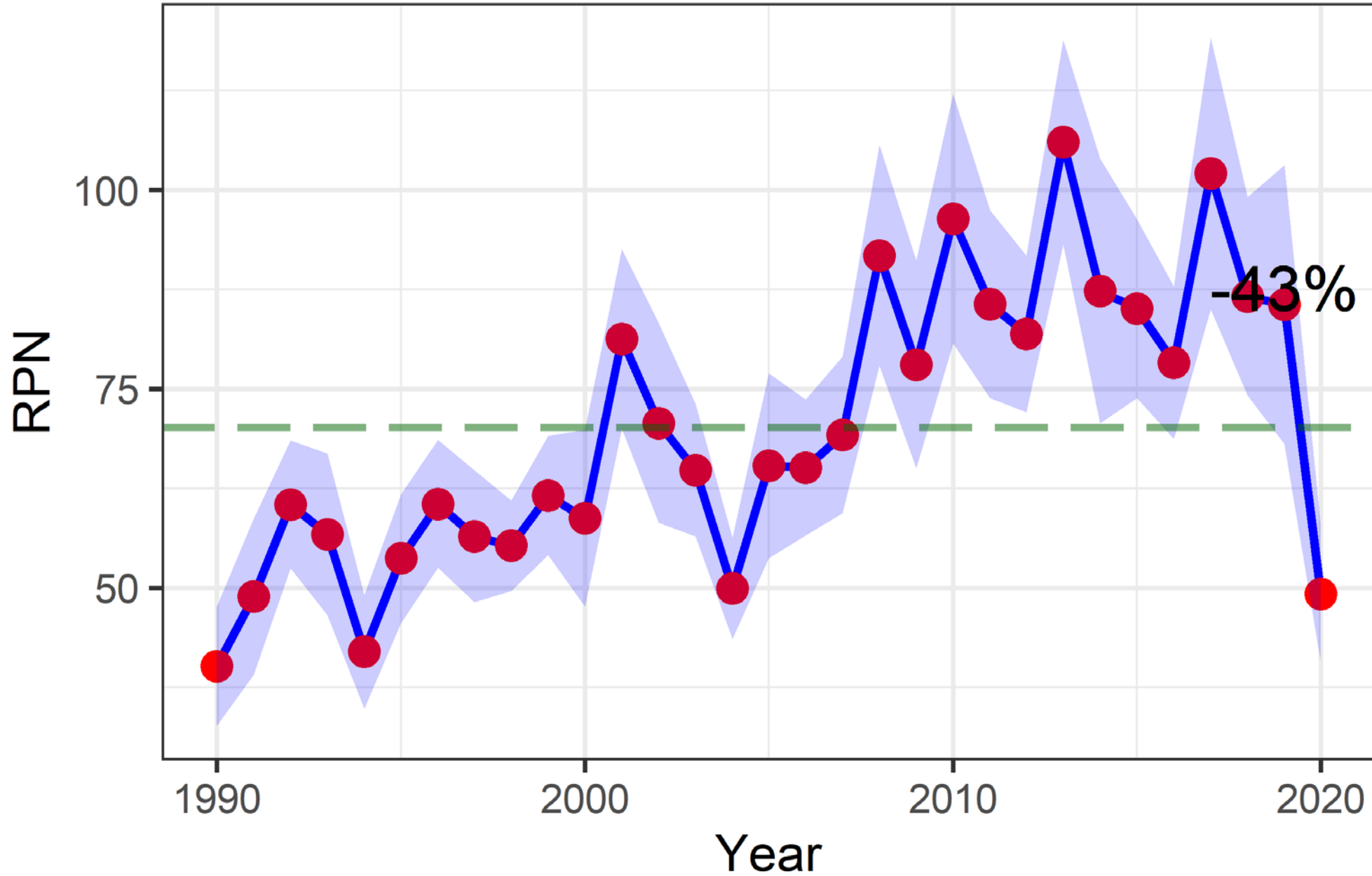
GOA G.Grenadier longline survey RPNs



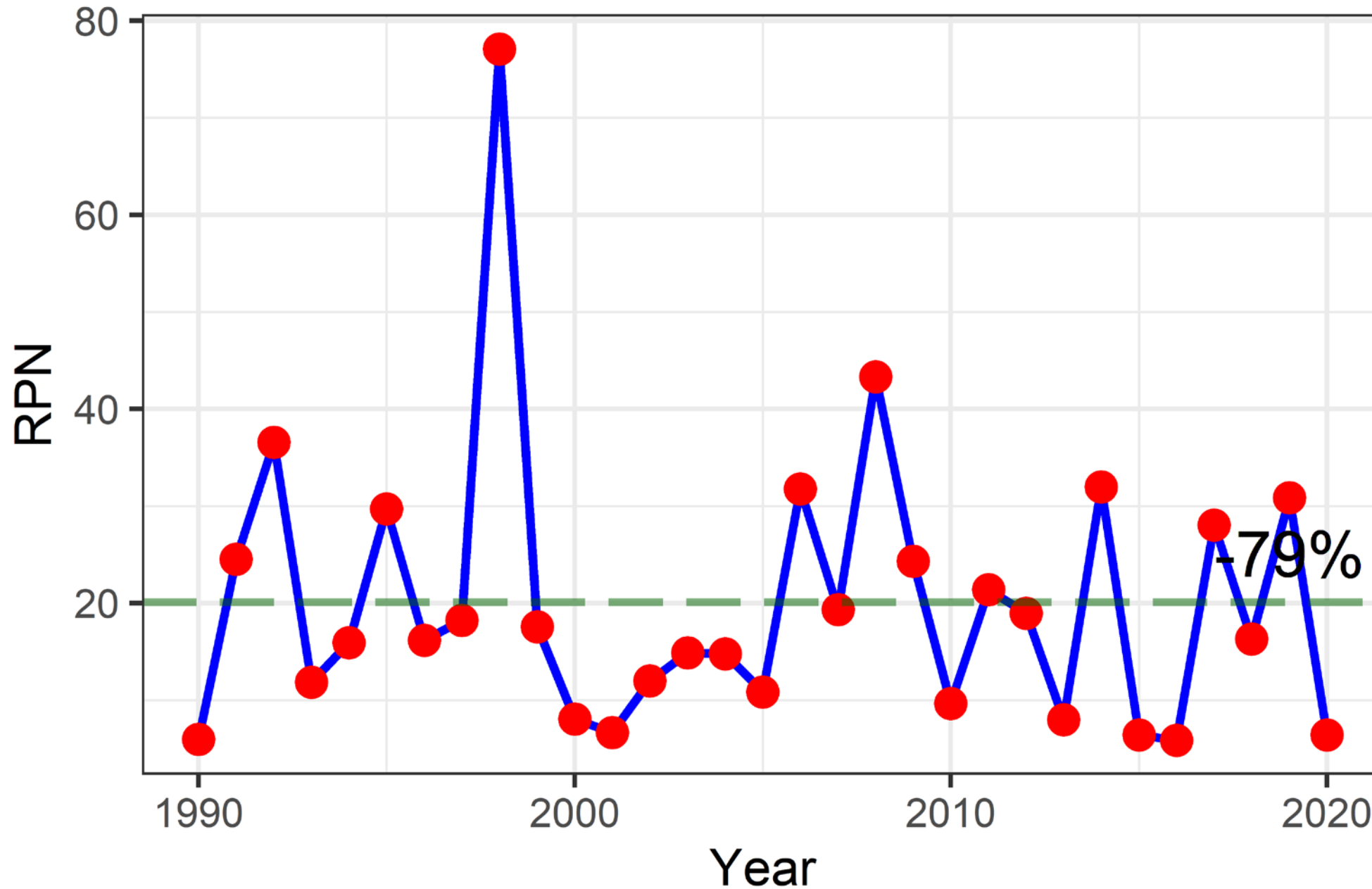
BSAI G.Grenadier longline survey RPNs



GOA Thornyhead longline survey RPNs



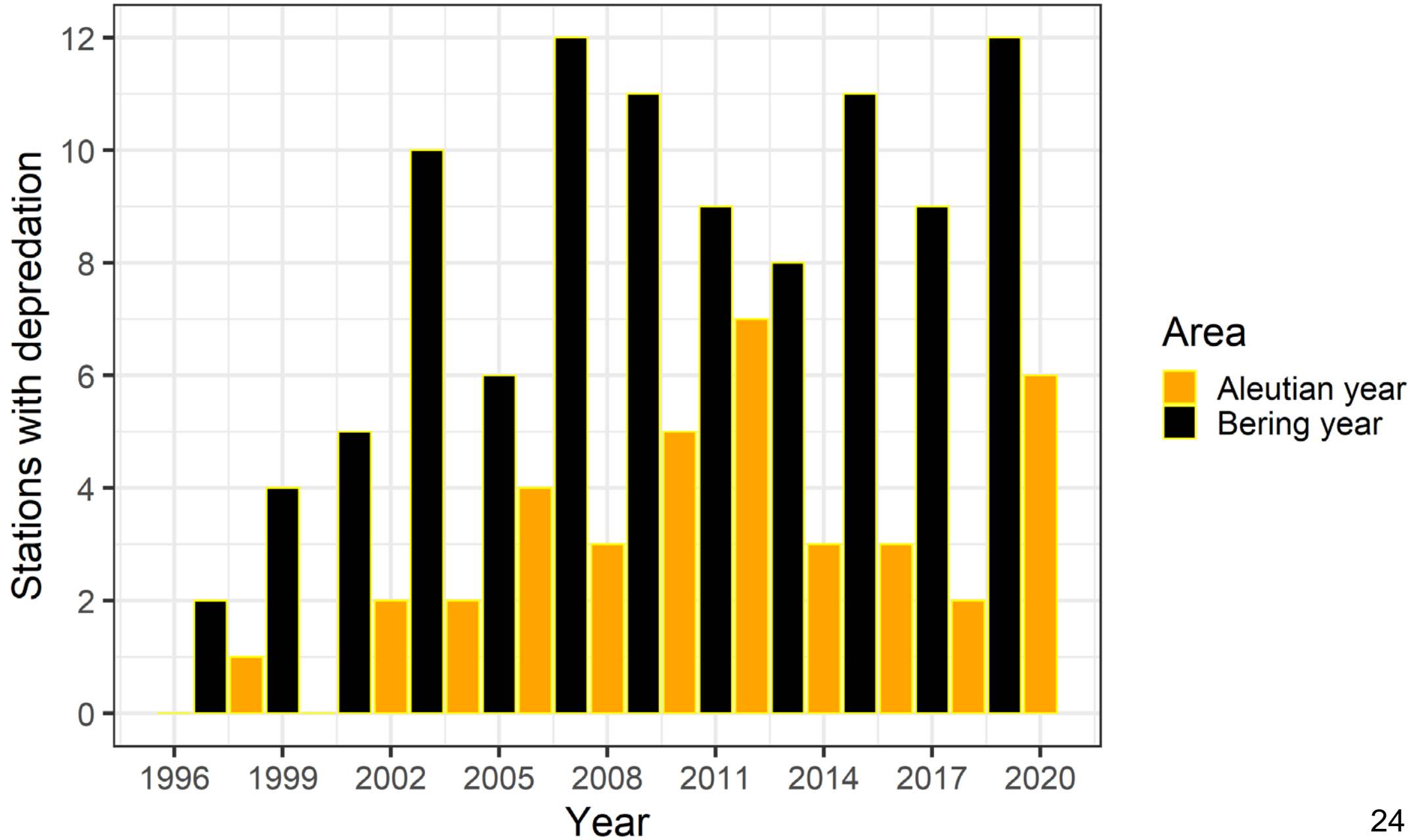
GOA Dogfish longline survey RPNs



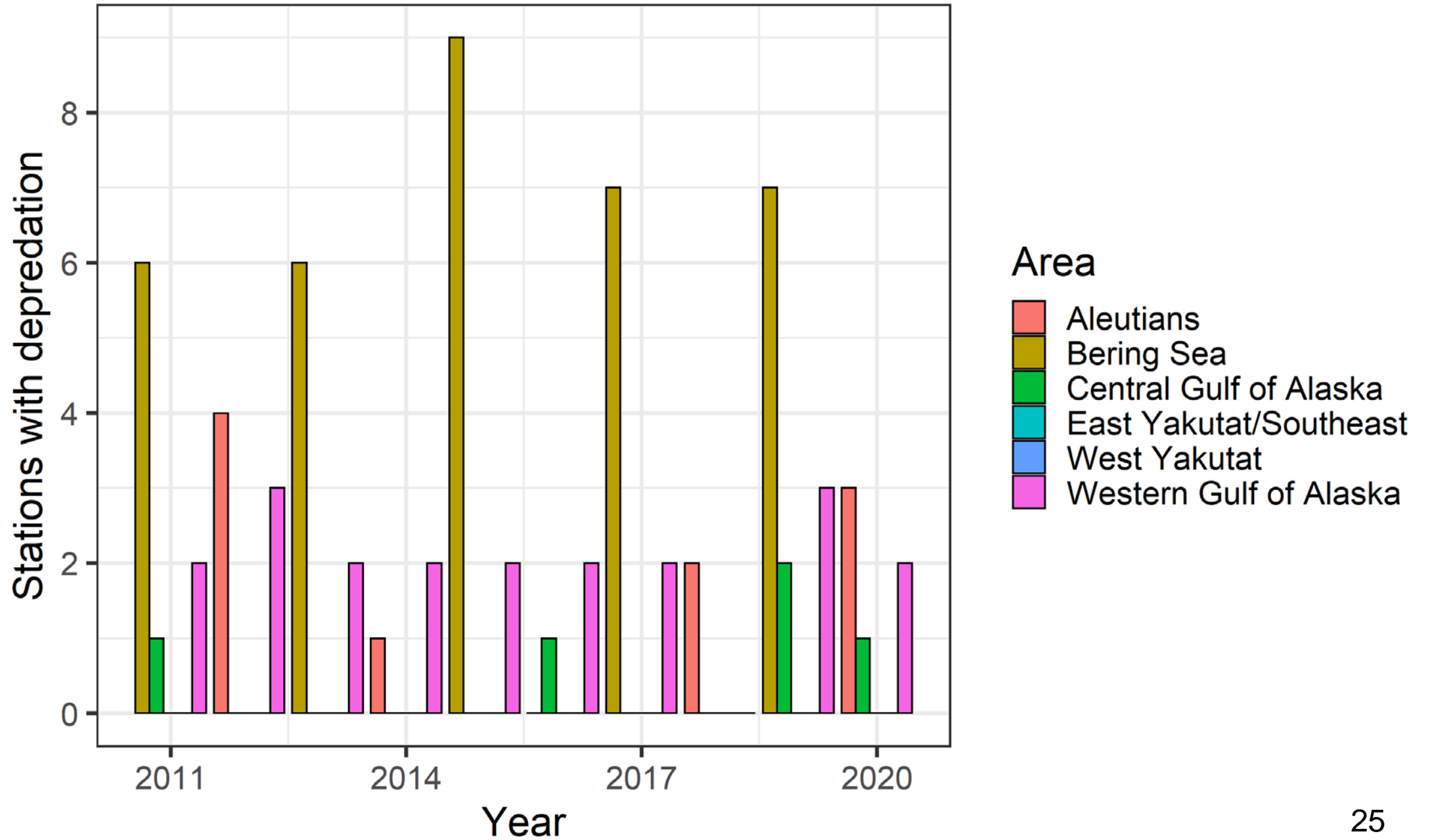
Whale Interactions



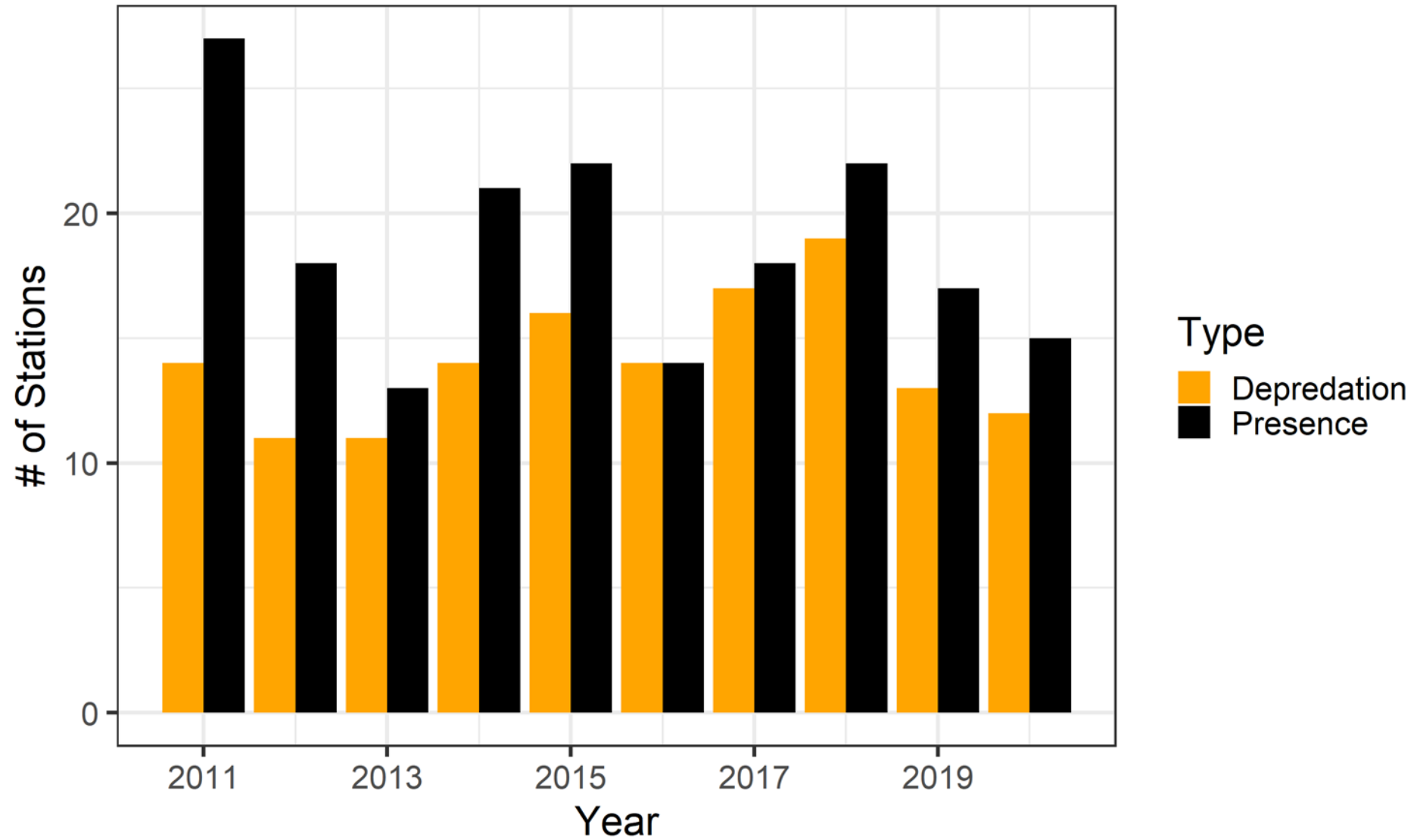
Killer whale depredation



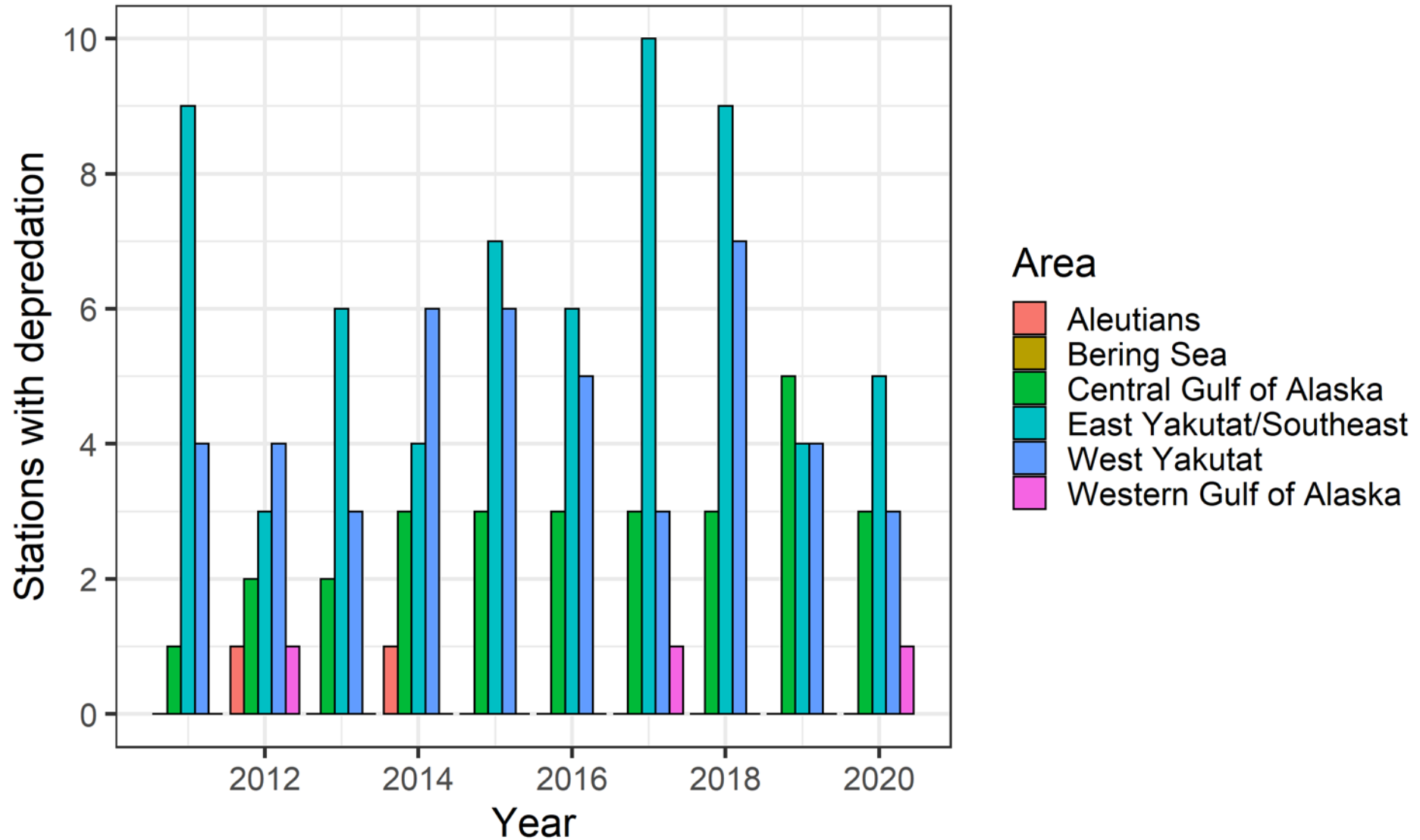
Killer whale depredation



Sperm whale interactions



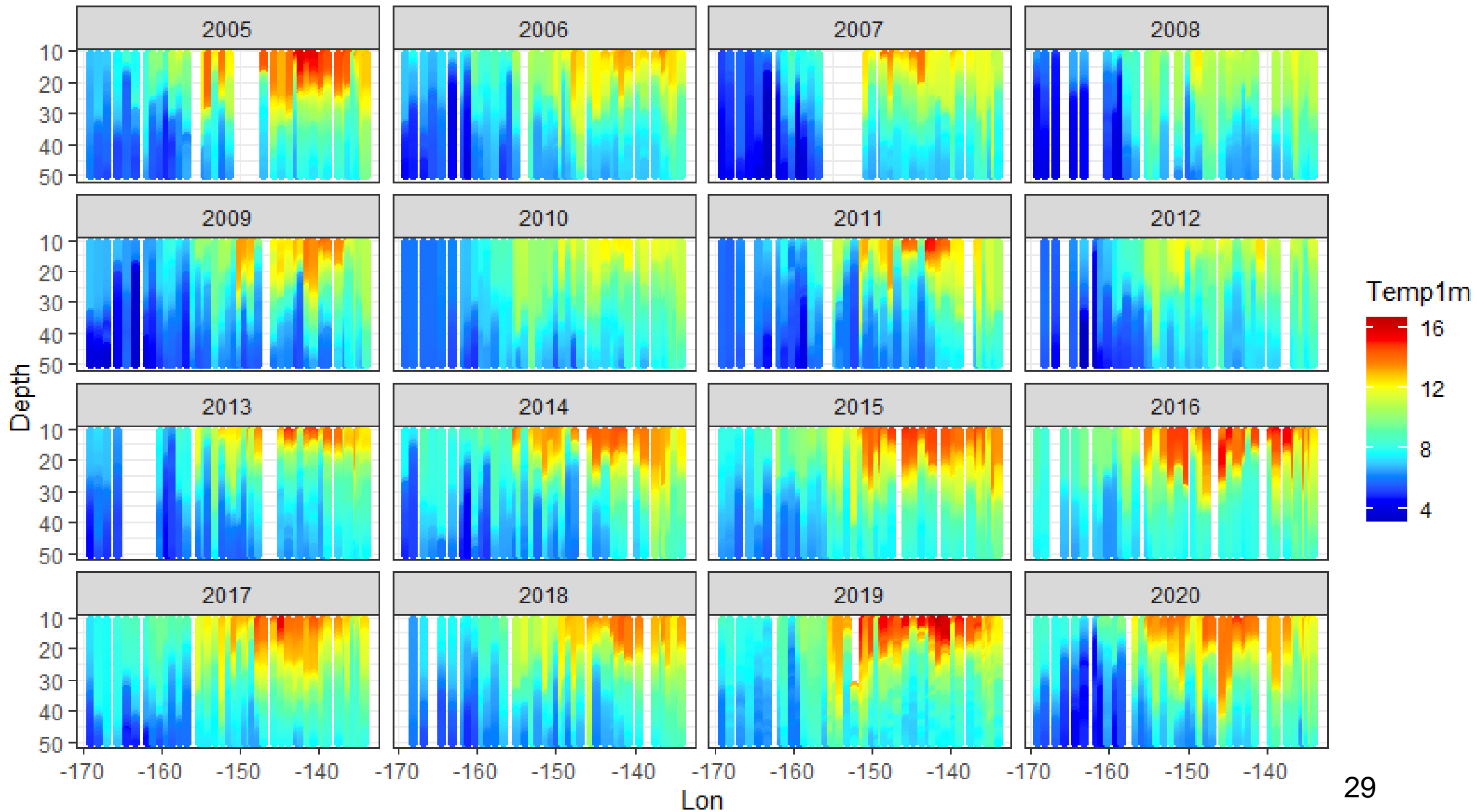
Sperm whale depredation



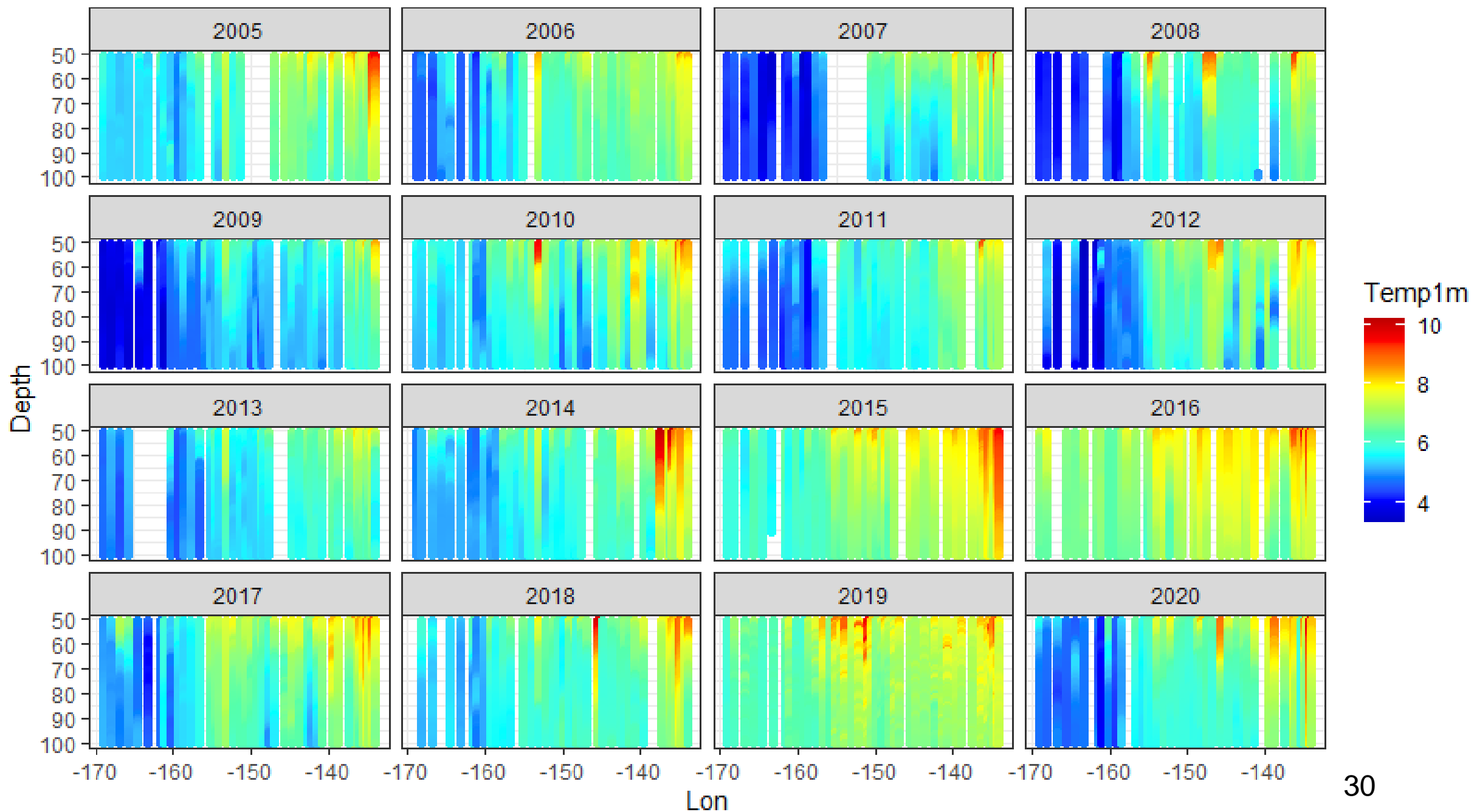


Subsurface Temperatures

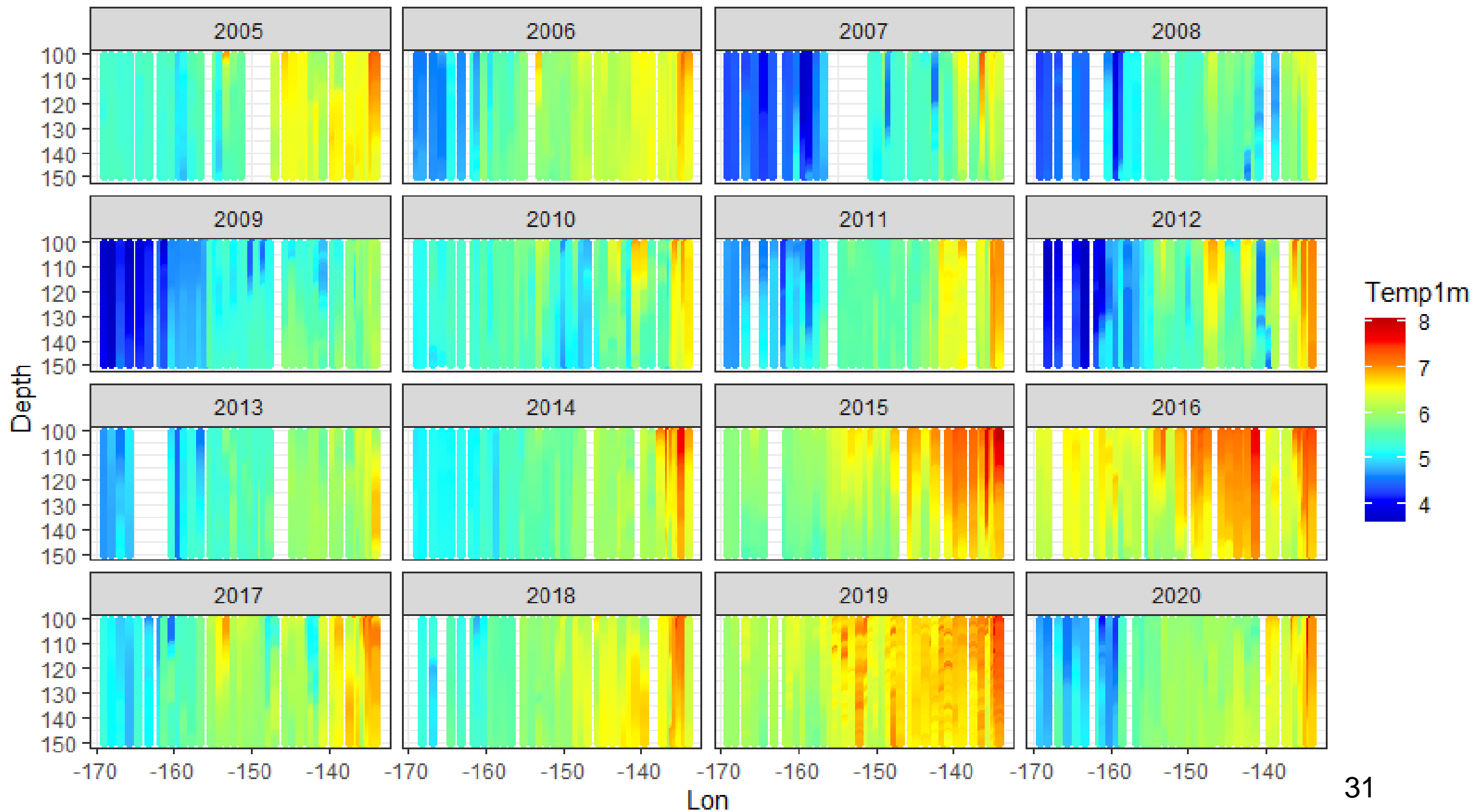
10-50m



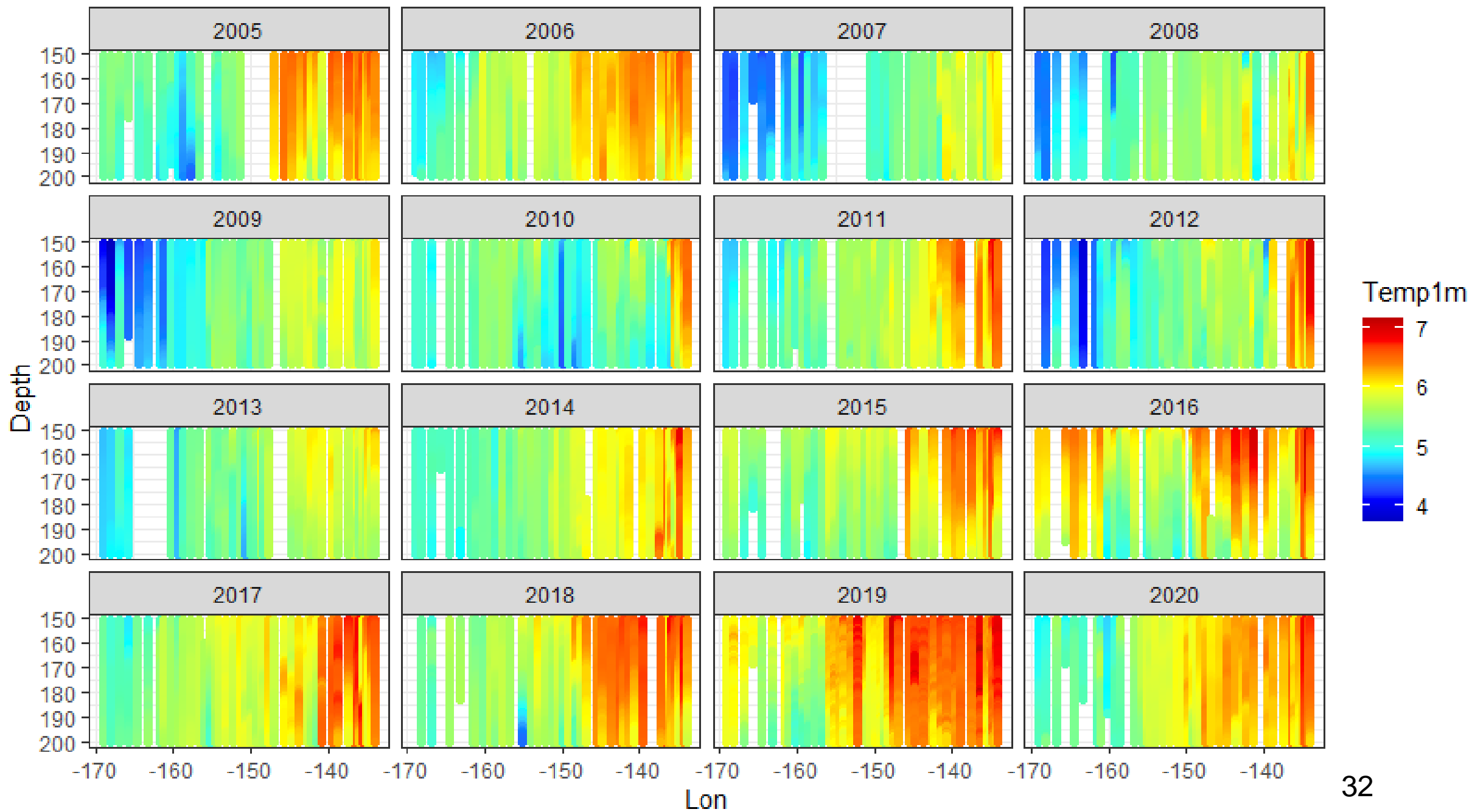
51-100m



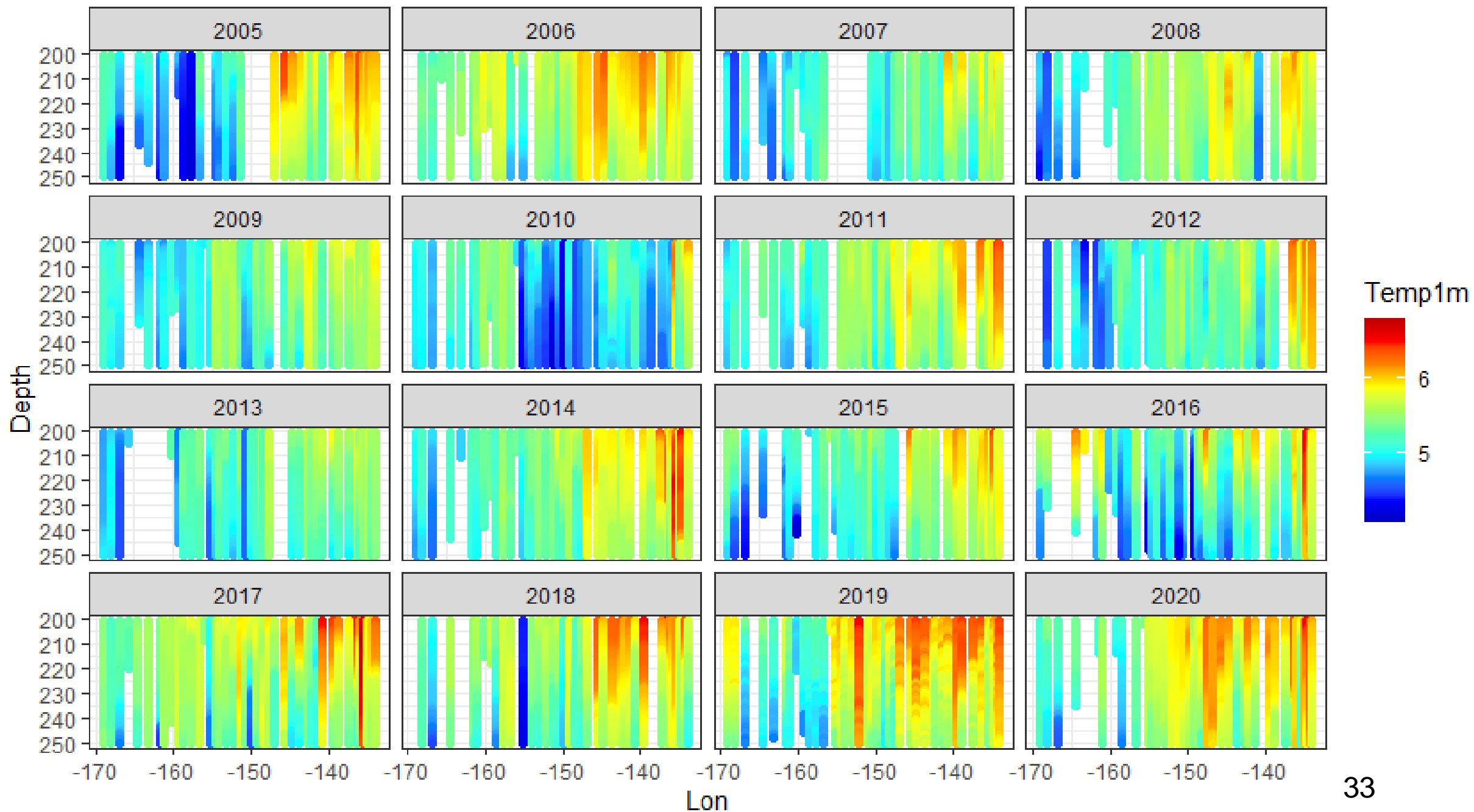
101-150m

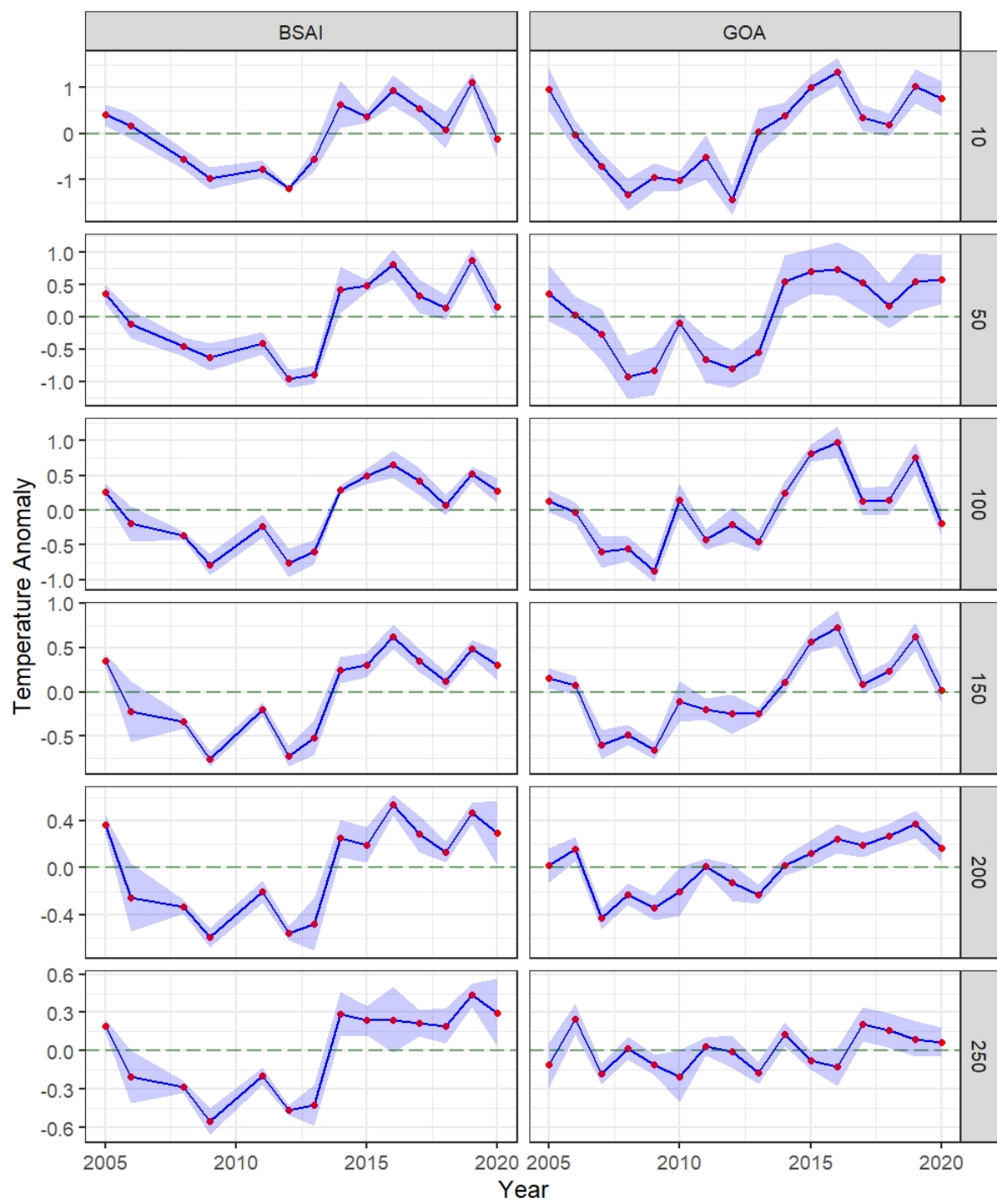


151-200m



201-250m





Other 2020 Observations

- Sablefish:
 - 2014 and 2016 year classes still large component of catch, with RPWs increasing
 - Age-1+ encountered in various locations, not on hooks
- Other
 - Declining catch (SST, Grenadier) could suggest hook competition, need to look into more

Acknowledgements

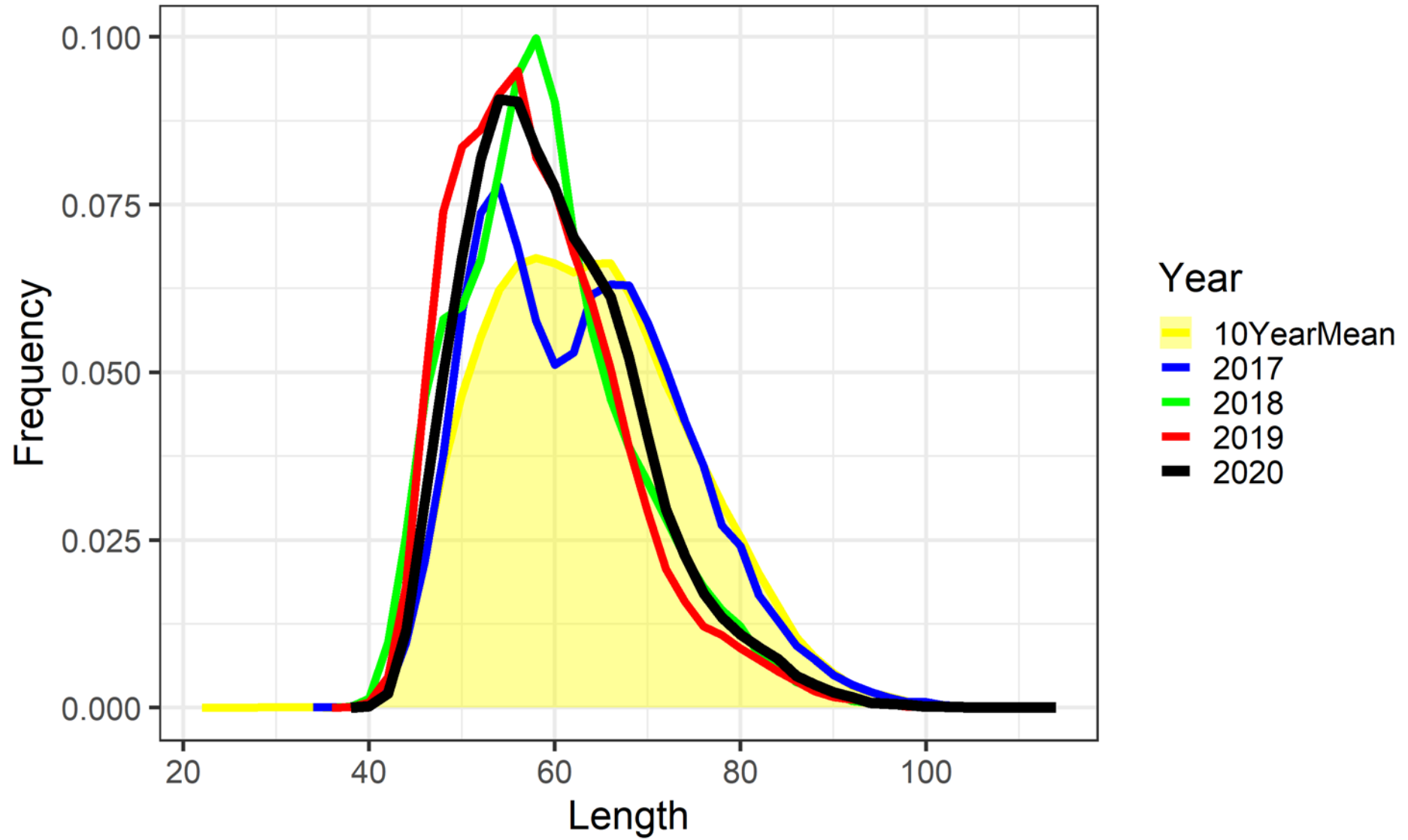
- Jason Wright - Chief Scientist (contractor)
- Sara Bunker & Daisy Perez- Observers (contractors)
- FV Alaskan Leader captains & crew
- RACE Division
- Dana Hanselman (ABL)



Questions?



Recent F. Sablefish length frequencies



Recent M. Sablefish length frequencies

