

NOAA
FISHERIES

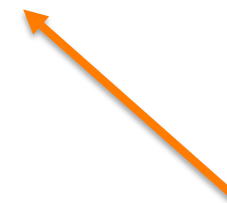
A Comparison of Design and Model-based Survey Indices for the Northern Rockfish Stock in the Gulf of Alaska

Gulf of Alaska, Groundfish Plan Team
September, 2018

Curry Cunningham
Pete Hulson, Dana Hanselman, Chris Lunsford

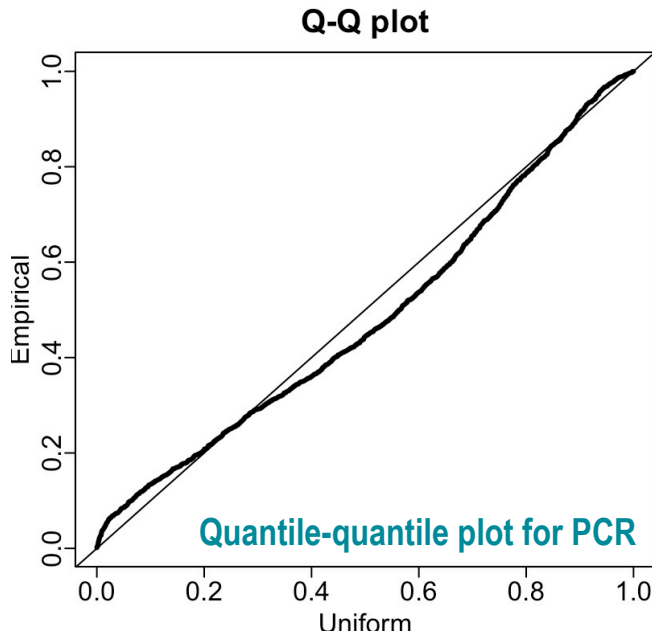
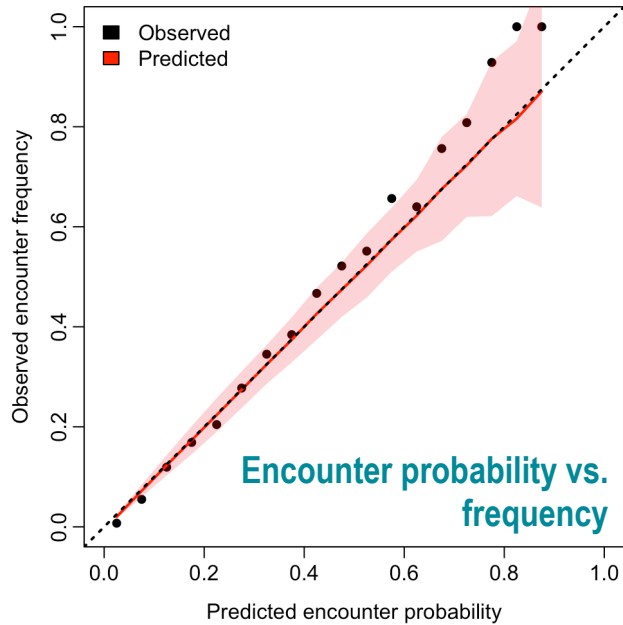
Description of Alternative Models

- Model 15.4
 - 2015 base model fitting design-based index from GOA bottom trawl survey
- Model 15.5
 - Same model structure but fitting the VAST model-based survey index
- Model 15.6
 - Fitting model-based index and with likelihood weight for survey index reduced by 50%



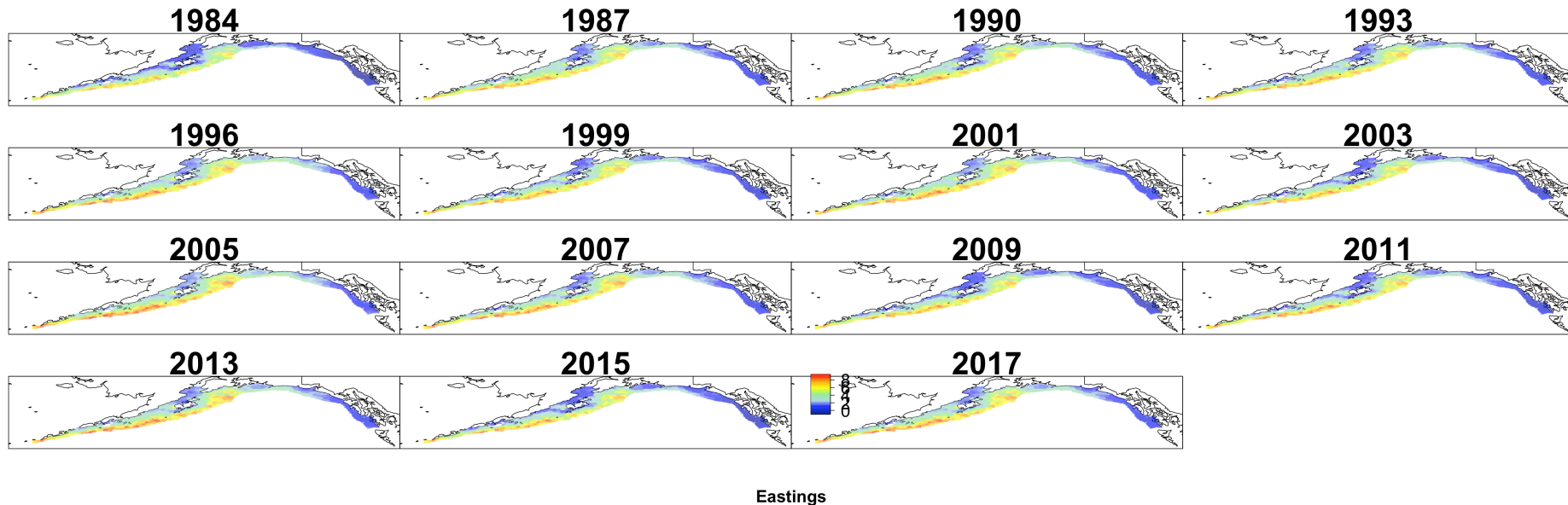
An **Intermediate** Option

VAST Model-based Survey Index



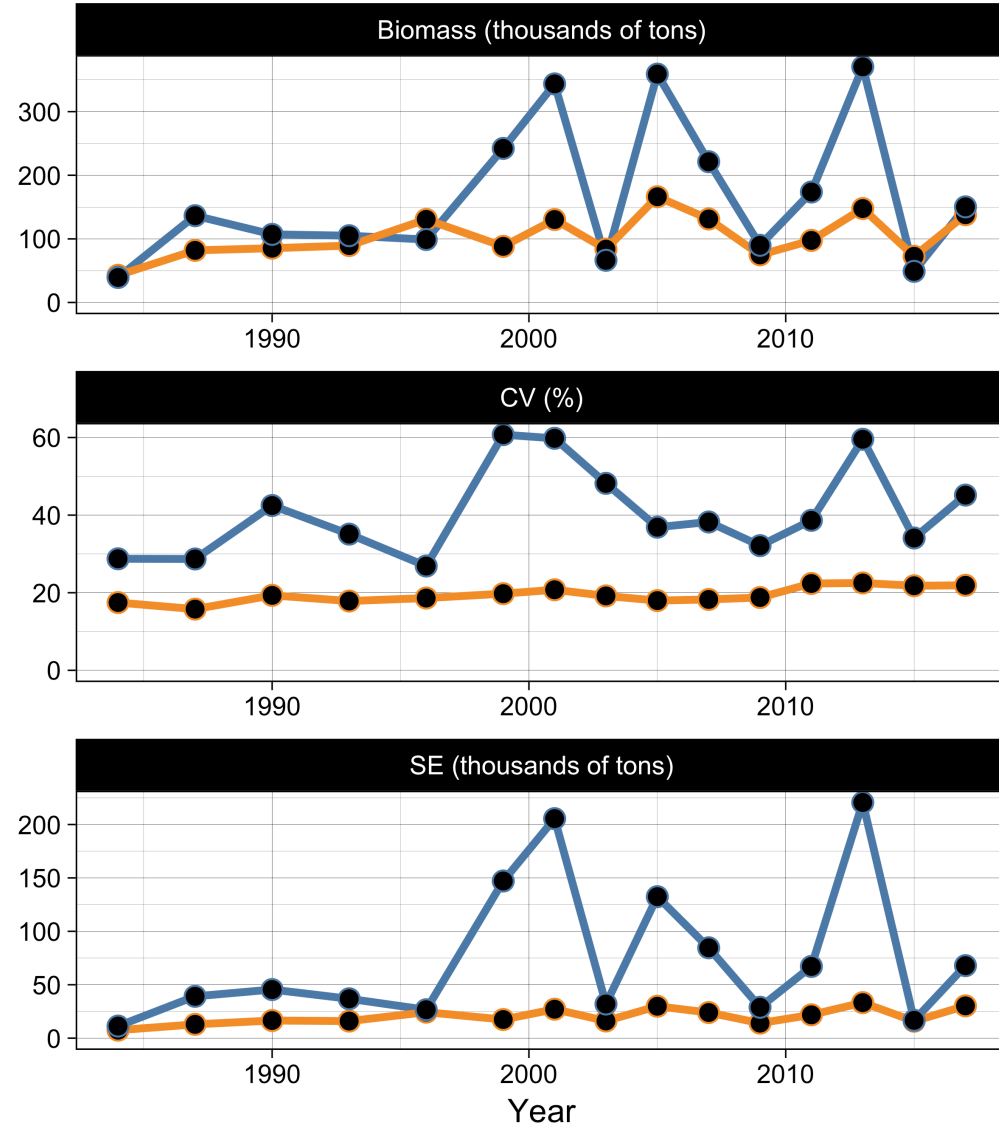
Model Specification

- Fine spatial res: 500 kt
- Bias corrected index
- Lognormal for PCR



Comparison of Design and Model-based Indices

- Inter-survey variation
 - $DBI > MBI$
- Estimated (model) uncertainty in index
 - $DBI > MBI$



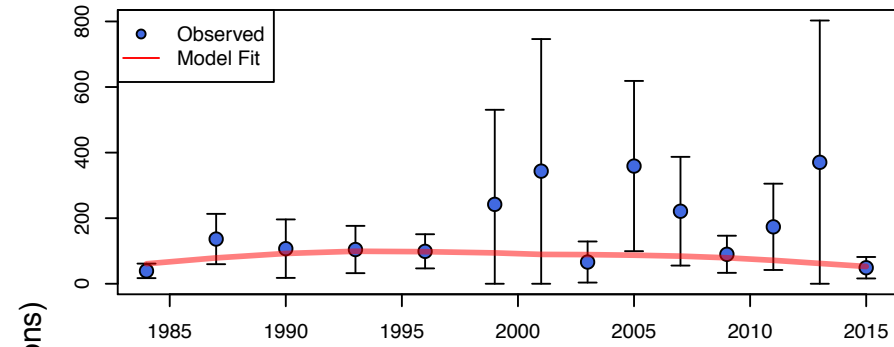
Comparison of Model Fit to Survey Data

Model Log-Likelihoods

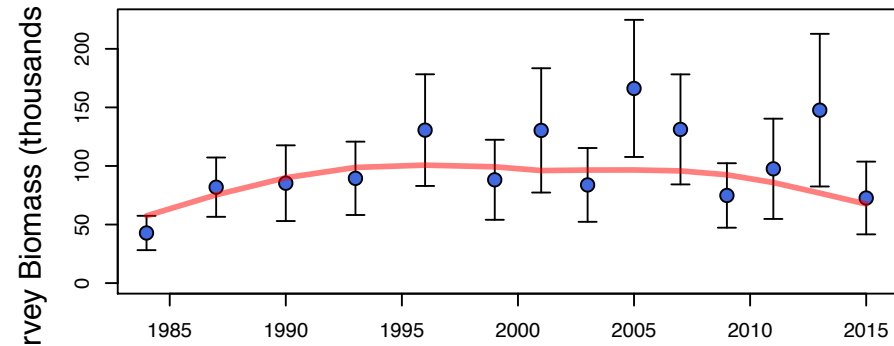
Model	Total	Data	Catch	Survey Biomass	Fish Age	Survey Age	Fish Size
15.4 (2015 Base Model)	228.8	144.6	0.1	10.1	28.5	55.3	50.6
15.5 (2015 Base Model + VAST index)	231.9	146.9	0.2	11.4	28.6	57.3	49.5
15.6 (VAST index + Scaled survey weight)	225.9	141.4	0.1	6.5	28.5	56.0	50.2



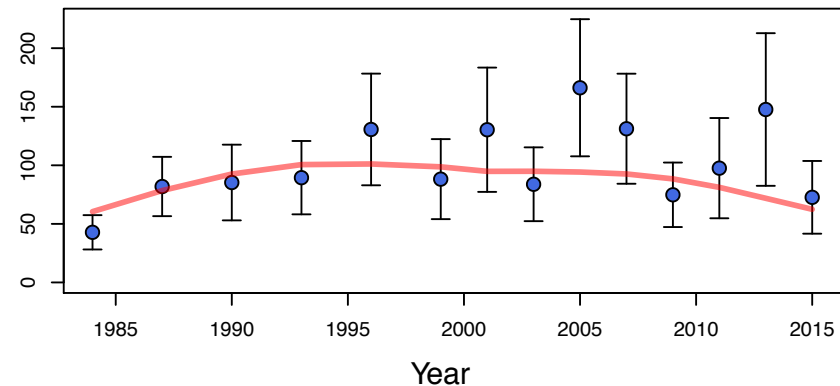
15.4 (2015 Base Model)



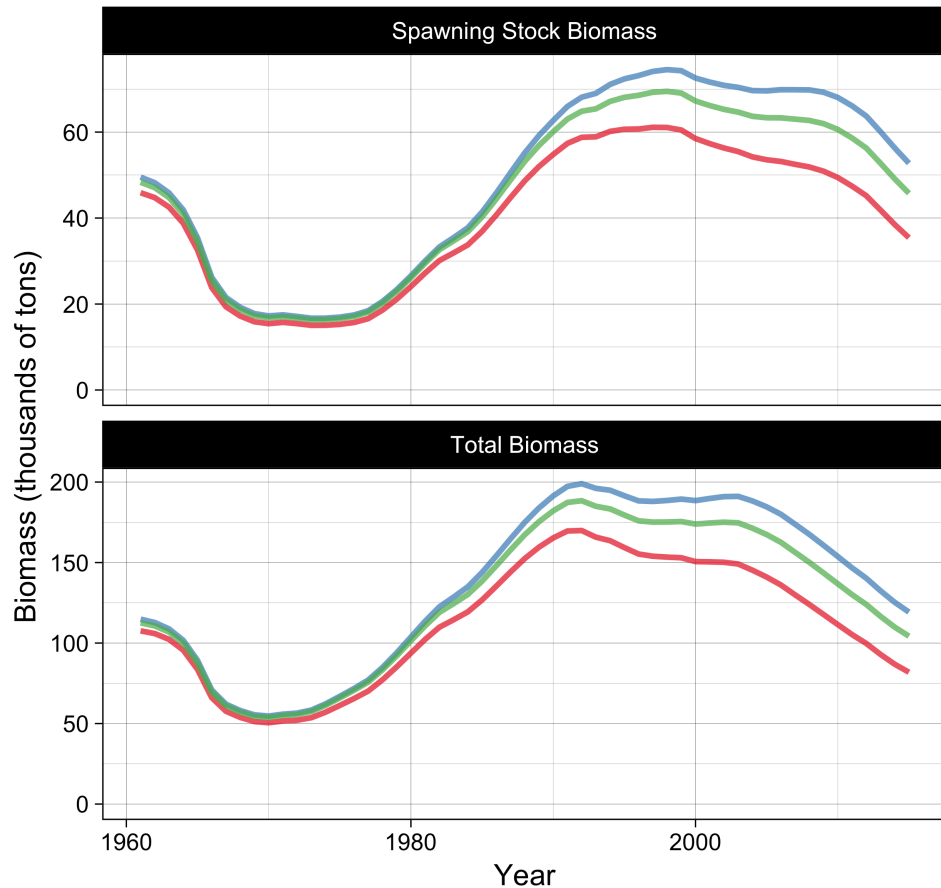
15.5 (2015 Base Model + VAST index)



15.6 (VAST index + Scaled survey weight)



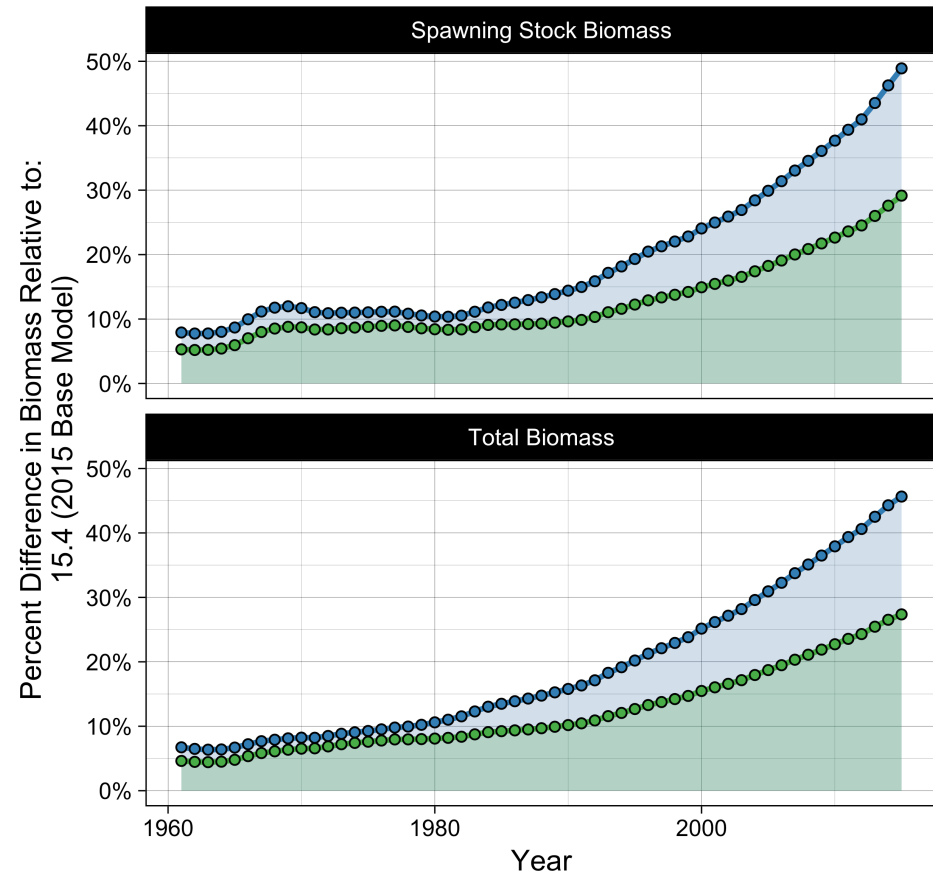
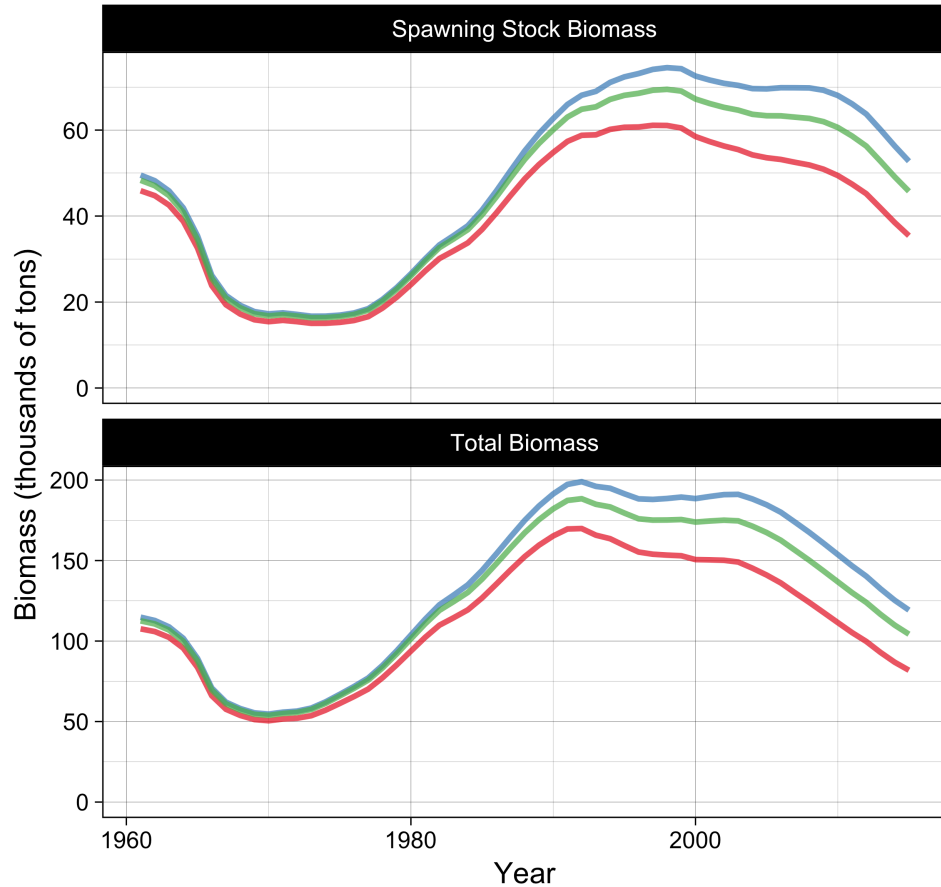
Difference in Biomass Estimates



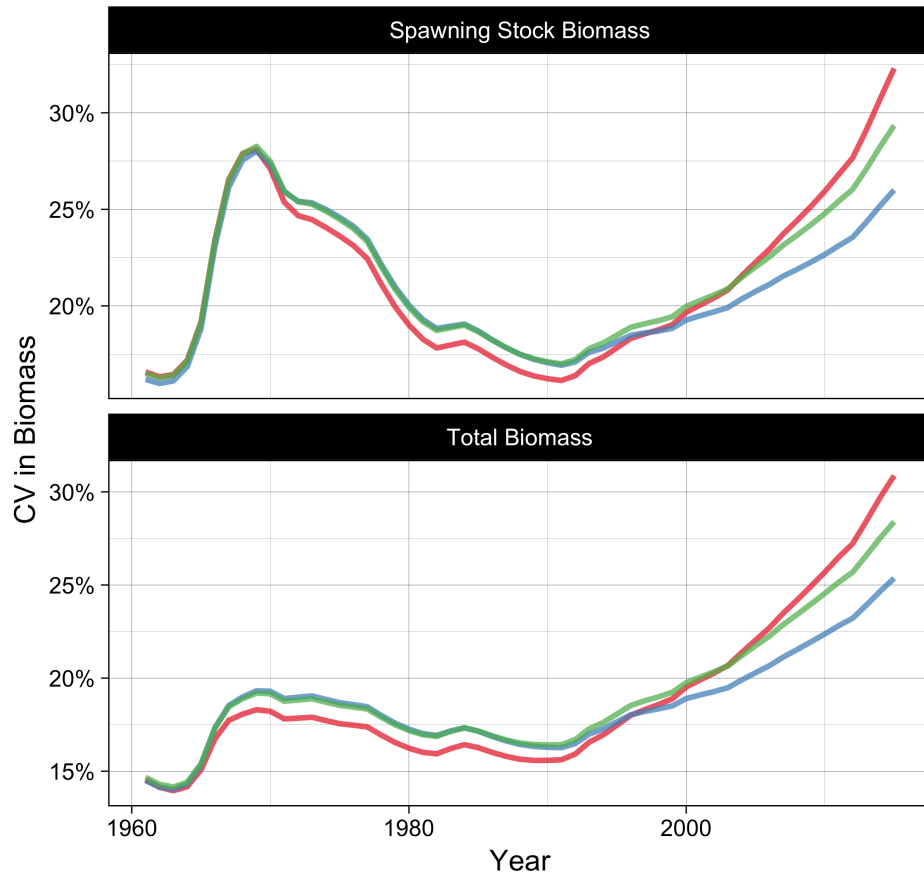
Model

- 15.4 (2015 Base Model)
- 15.5 (2015 Base Model + VAST index)
- 15.6 (VAST index + Scaled survey weight)

Difference in Biomass Estimates



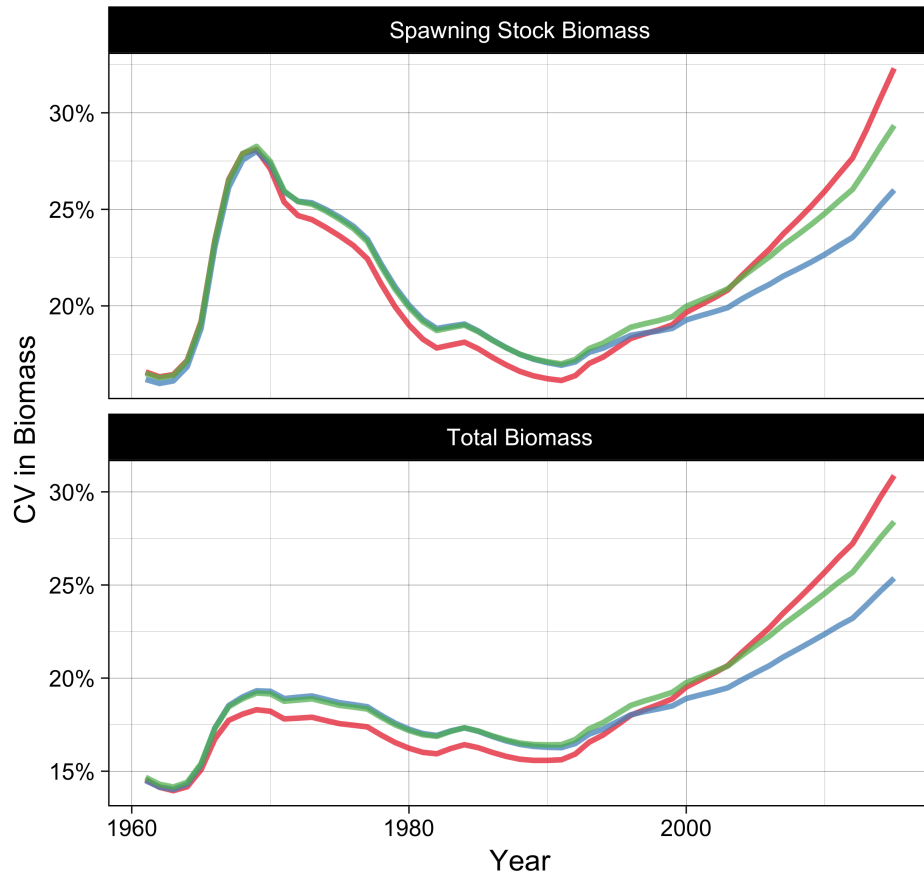
Difference in Biomass Estimate Uncertainty



Model

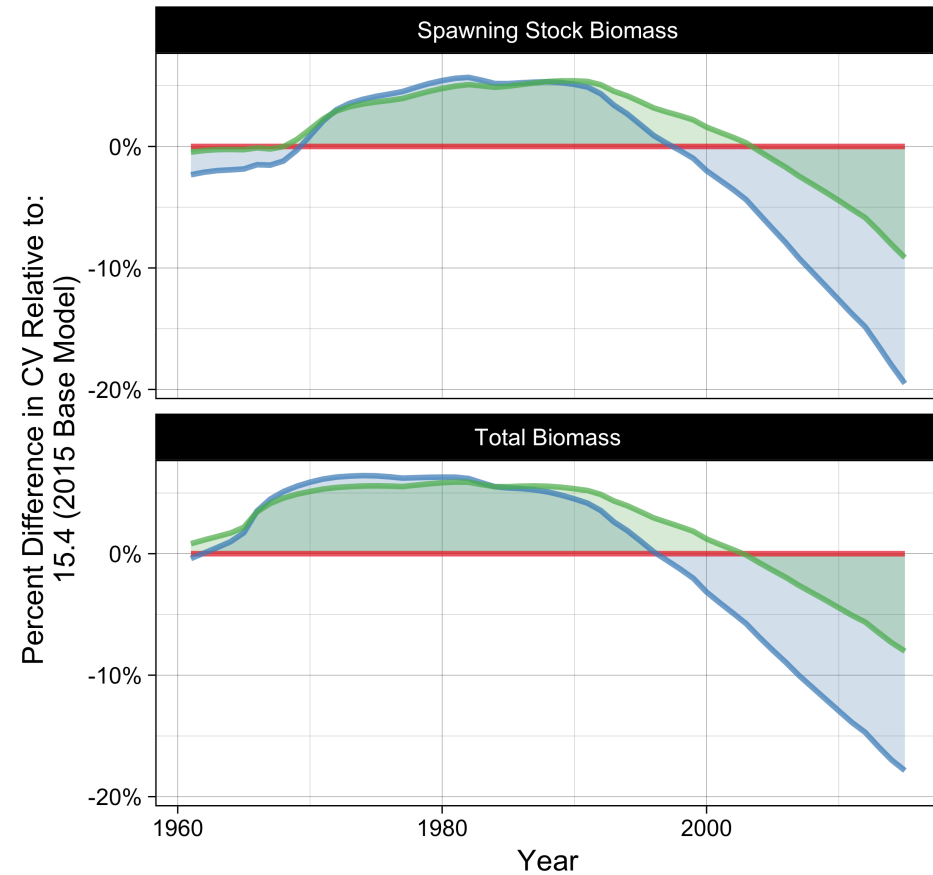
- 15.4 (2015 Base Model)
- 15.5 (2015 Base Model + VAST index)
- 15.6 (VAST index + Scaled survey weight)

Difference in Biomass Estimate Uncertainty



Model

- 15.4 (2015 Base Model)
- 15.5 (2015 Base Model + VAST index)
- 15.6 (VAST index + Scaled survey weight)

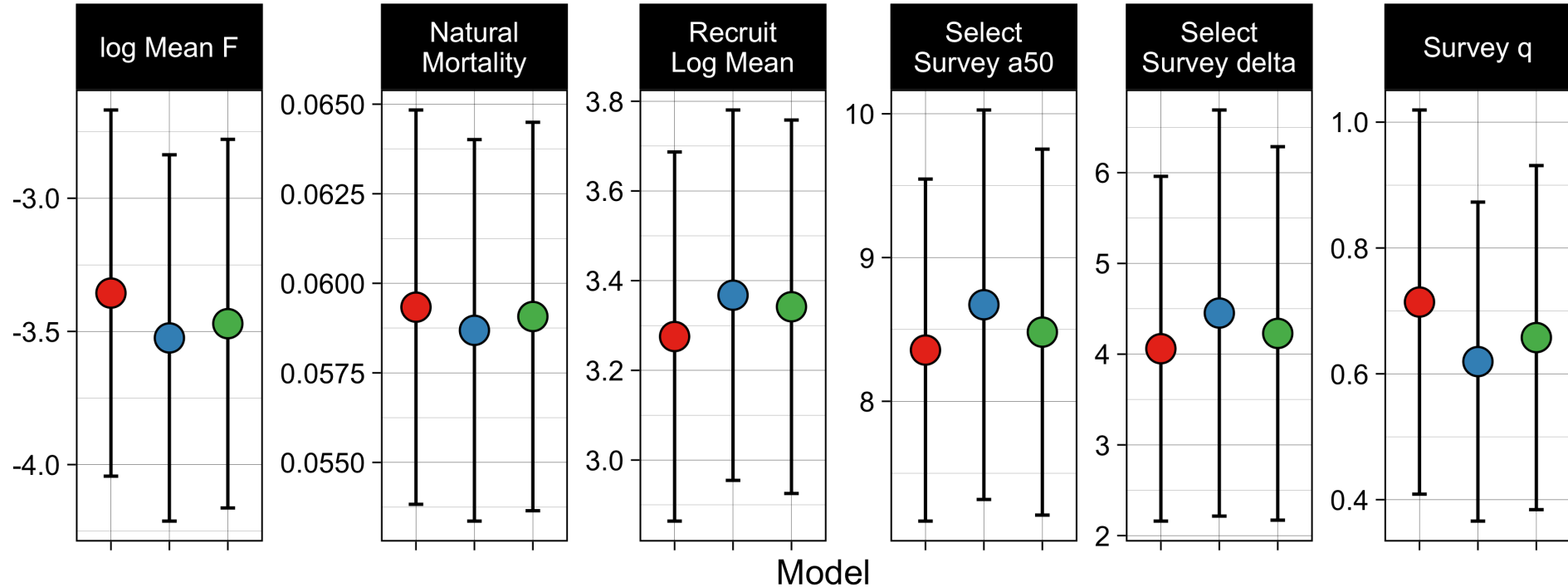


Model

- 15.4 (2015 Base Model)
- 15.5 (2015 Base Model + VAST index)
- 15.6 (VAST index + Scaled survey weight)

Difference in Estimated Parameters

Estimated Parameters



- 15.4 (2015 Base Model)
 - 15.5 (2015 Base Model + VAST index)
 - 15.6 (VAST index + Scaled survey weight)
- Model

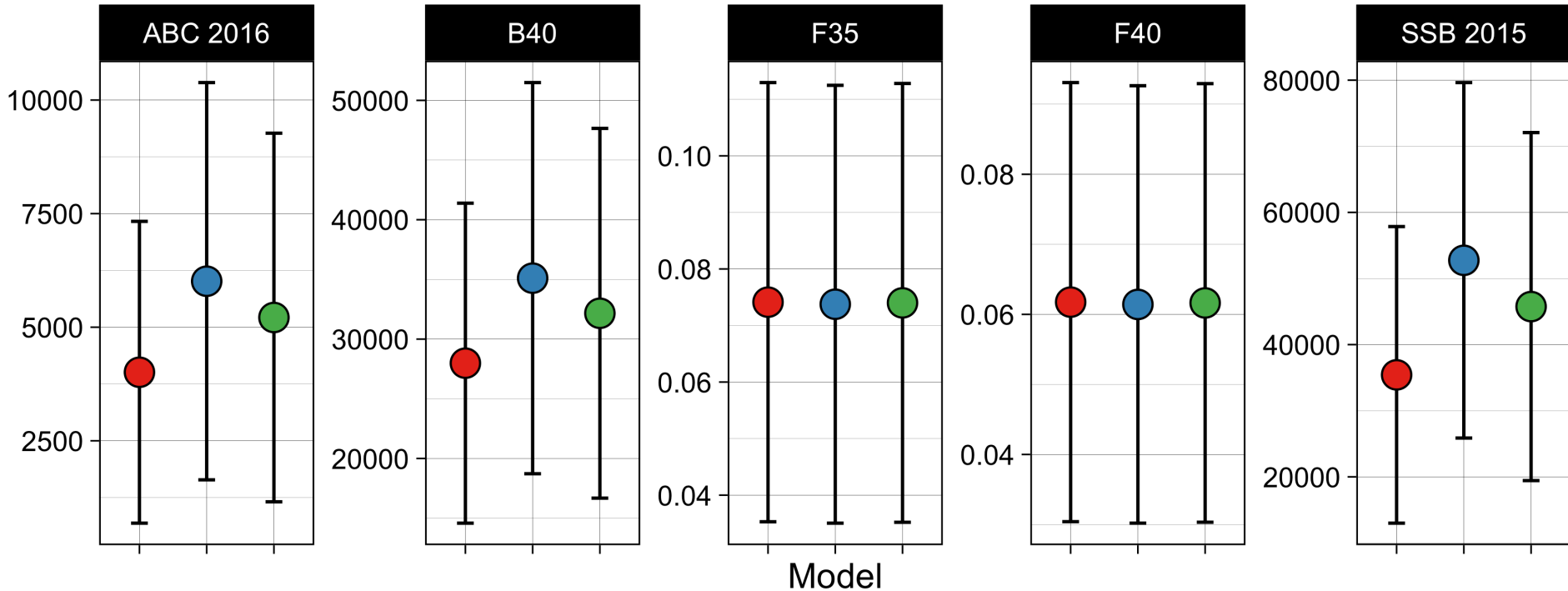
Prior on q

Mean: 1

CV: 45%

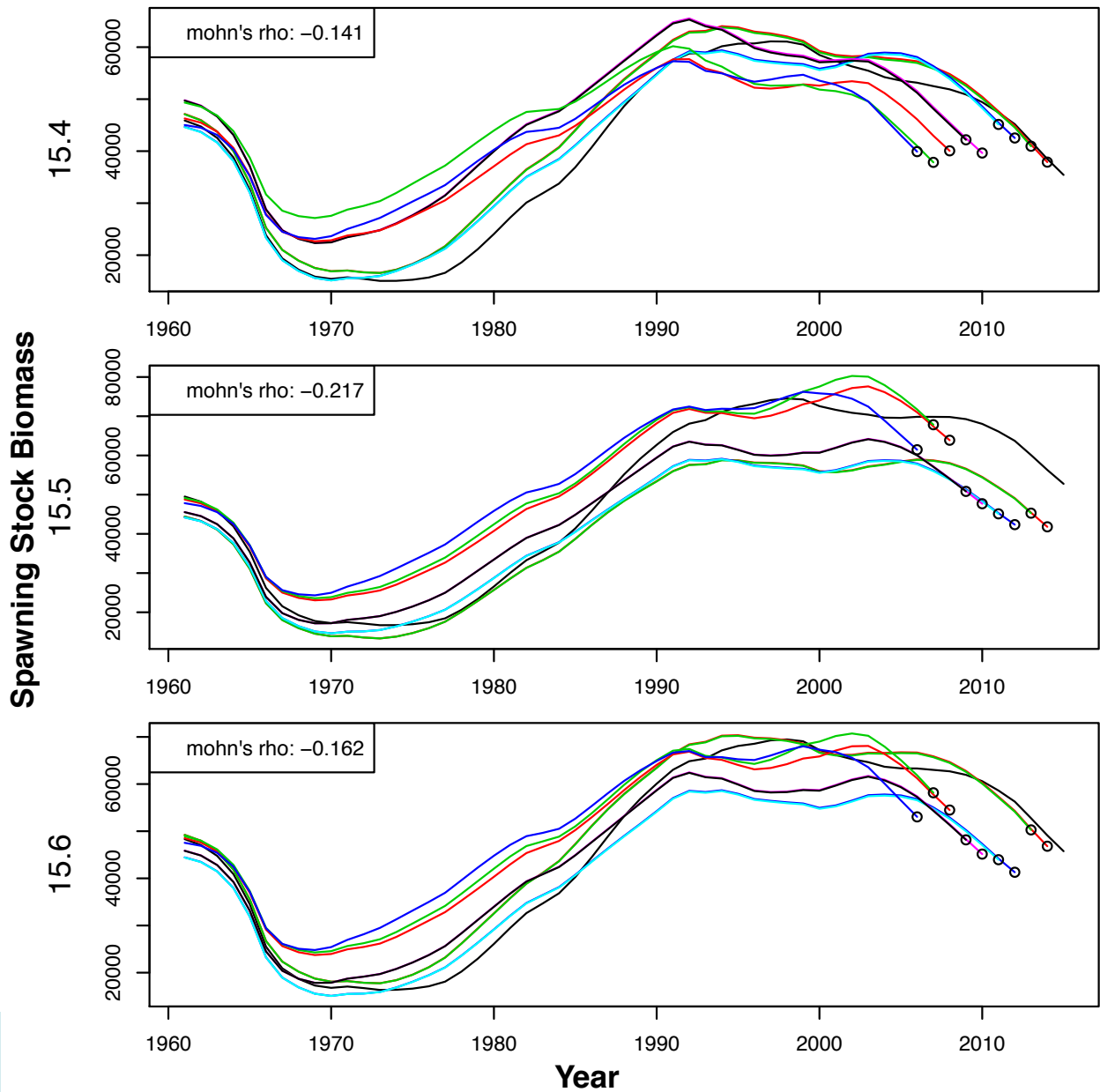
Difference in Derived Parameters

Derived Parameters



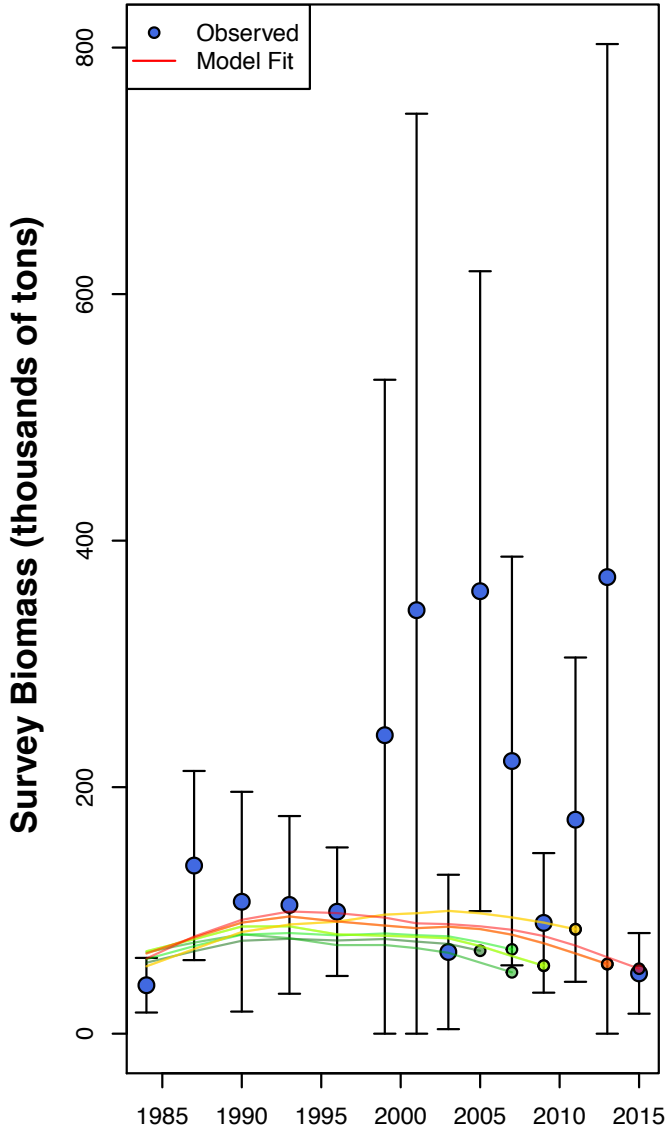
- 15.4 (2015 Base Model)
- 15.5 (2015 Base Model + VAST index)
- 15.6 (VAST index + Scaled survey weight)

Retrospective Pattern: Spawning Stock Biomass

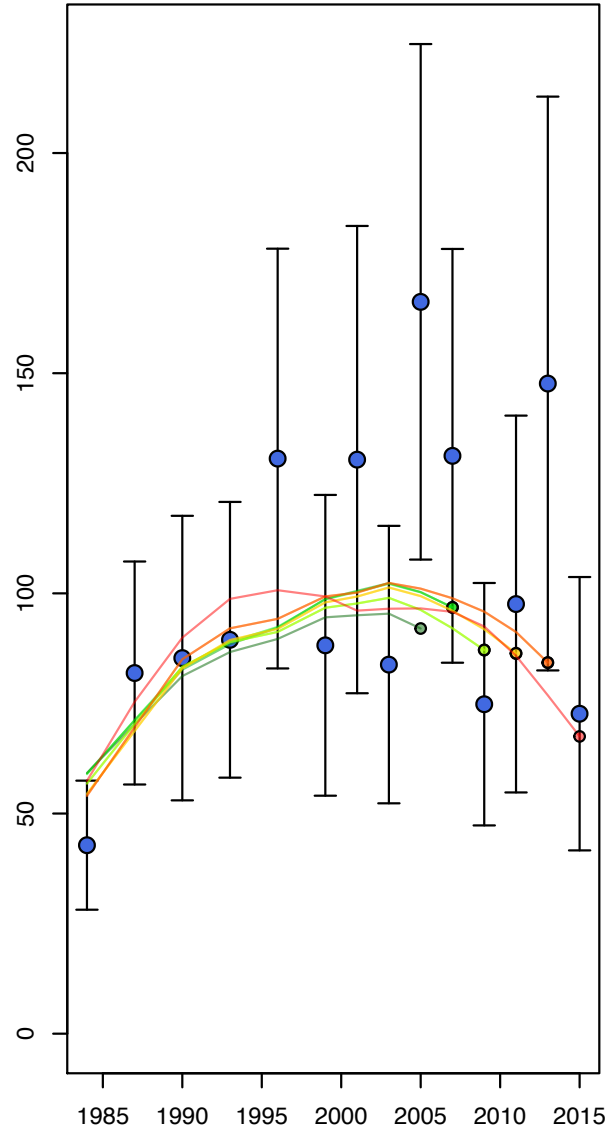


Retrospective Pattern: Fit to Survey Index

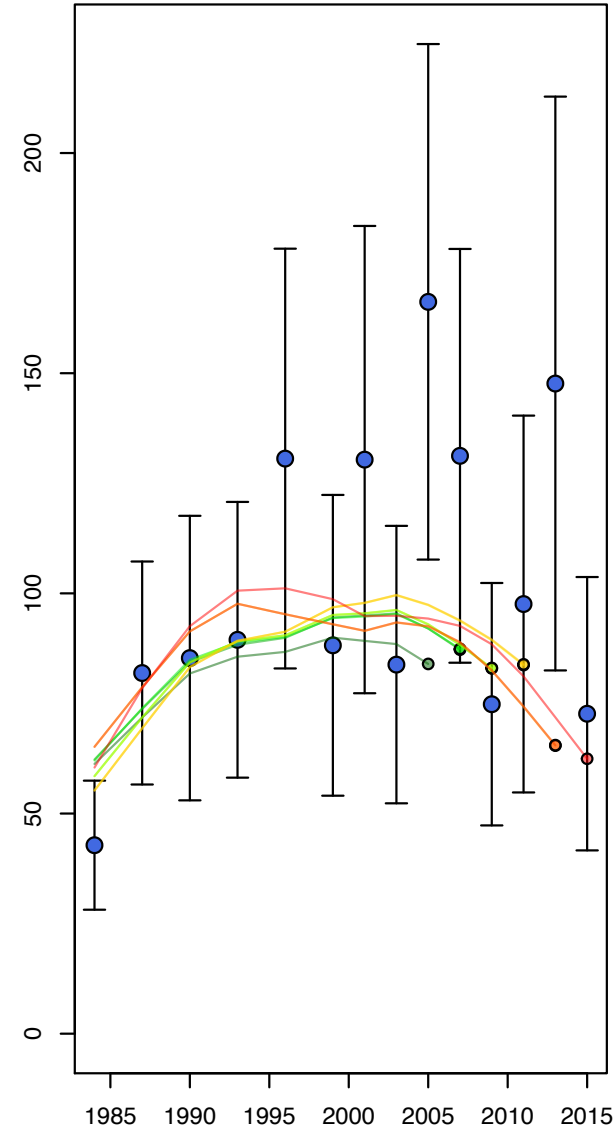
15.4 (2015 Base Model)



15.5 (2015 Base Model + VAST index)



15.6 (VAST index + Scaled survey weight)



Year

Inclusion of the Model-based Index

- MBI: **lower** uncertainty and **less** inter-survey variation
 - Perhaps **more** reasonable given life history?
- Model appears to fit MBI **better** than DBI
- Likelihood comparison **does not** suggest conflict with survey age composition
- Assessed SSB and TB **higher** on average
 - CV in biomass estimates **lower** after 2000
- Difference in parameter estimates
 - Mean F **↓**, M **↓**, Mean rec. **↑**, q **↓**, and Selectivity **→**
- Difference in derived quantities
 - 2015 SSB **↑**, $B_{40\%}$ **↑**, and 2016 ABC **↑**
- Rather **poor** retrospective pattern in SSB becomes **worse**



Retrospective Pattern: Recruitment

