

**ADF&G Informational Handout for
Charter Halibut Committee Meeting
October 27, 2020**

Table 1. Preliminary charter halibut harvest estimates for Areas 2C and 3A for 2020.

Area	Mean wt (lb)	Logbook		RelMort (lb)	Total		Overage (lb)	Overage %
		Harvest (no. fish)	Yield (lb)		Removals (lb)	Allocation (lb)		
2C	12.75	37,415	477,208	22,327	499,535	780,000	-280,465	-36.0%
3A	14.60	108,379	1,582,853	13,843	1,596,697	1,710,000	-113,303	-6.6%

Table 2. Comparison of 2019 preliminary (Oct 2019) and final (Oct 2020) estimates.

Area	Component	Preliminary	Final	Final Relative to Preliminary
2C	Harvest (no. fish)	67,529	70,600	4.5%
	Average wt (lb)	9.39	9.38	-0.1%
	Yield (Mlb)	0.634	0.662	4.5%
	Release mortality (Mlb)	0.033	0.035	5.4%
	Total removals (Mlb)	0.667	0.697	4.5%
3A	Harvest (no. fish)	137,731	139,082	1.0%
	Average wt (lb)	14.52	14.64	0.8%
	Yield (Mlb)	2.000	2.036	1.8%
	Release mortality (Mlb)	0.018	0.019	2.3%
	Total removals (Mlb)	2.018	2.054	1.8%

Table 3. Performance of charter management measures recommended annually by the North Pacific Fishery Management Council since 2014 (2020 preliminary estimates in bold italics).

Area	Year	Management measure	Allocation ^a	Removals ^a	Overage	% Overage
2C	2014	One fish, U44-O76 rev. slot	0.761	0.827	0.066	9%
	2015	One fish, U42-O80 rev slot	0.851	0.814	-0.037	-4%
	2016	One fish, U43-O80 rev slot	0.906	0.839	-0.067	-7%
	2017	One fish, U44-O80 rev slot	0.915	0.943	0.028	3%
	2018	One fish, U38-O80 rev slot	0.810	0.716	-0.094	-12%
	2019	One fish, U38-O80 rev slot	0.820	0.697	-0.123	-15%
	2020	One fish, U40-O80 rev slot thru 6/14, U45-O80 after 6/14	0.780	<i>0.500^b</i>	-0.280	-36%
3A	2014	Two fish, one ≤ 29", one trip/day with halibut harvest.	1.782	2.068	0.286	16%
	2015	Two fish, one ≤ 29", Thursday closed Jun 15-Aug 31, annual limit 5 halibut, one trip/day with halibut harvest.	1.890	2.094	0.204	11%
	2016	Two fish, one ≤ 28", Wednesday closed all year, annual limit 4 halibut, one trip/day with halibut harvest.	1.814	2.021	0.207	11%
	2017	Two fish, one ≤ 28", Wednesday closed all year, three Tuesdays closed, annual limit 4 halibut, one trip/day with halibut harvest.	1.890	2.089	0.199	11%
	2018	Two fish, one ≤ 28", Wednesday closed all year, six Tuesdays closed, annual limit 4 halibut, one trip/day with halibut harvest.	1.790	1.886	0.096	5%
	2019	Two fish, one ≤ 28", Wednesday closed all year, five Tuesdays closed, annual limit 4 halibut, one trip/day with halibut harvest.	1.890	2.054	0.122	6%
	2020	Two fish (one ≤ 28" thru 6/14, ≤ 32" after 6/14), Tuesday and Wednesday closed thru 6/14, all days open after 6/14, annual limit 4 halibut thru 6/14, no annual limit after 6/14, one trip/day with halibut harvest.	1.710	<i>1.597^b</i>	-0.113	-7%

^a - Allocations and removals include O26 release mortality beginning with the CSP in 2014.

^b - 2019 removal estimates are preliminary

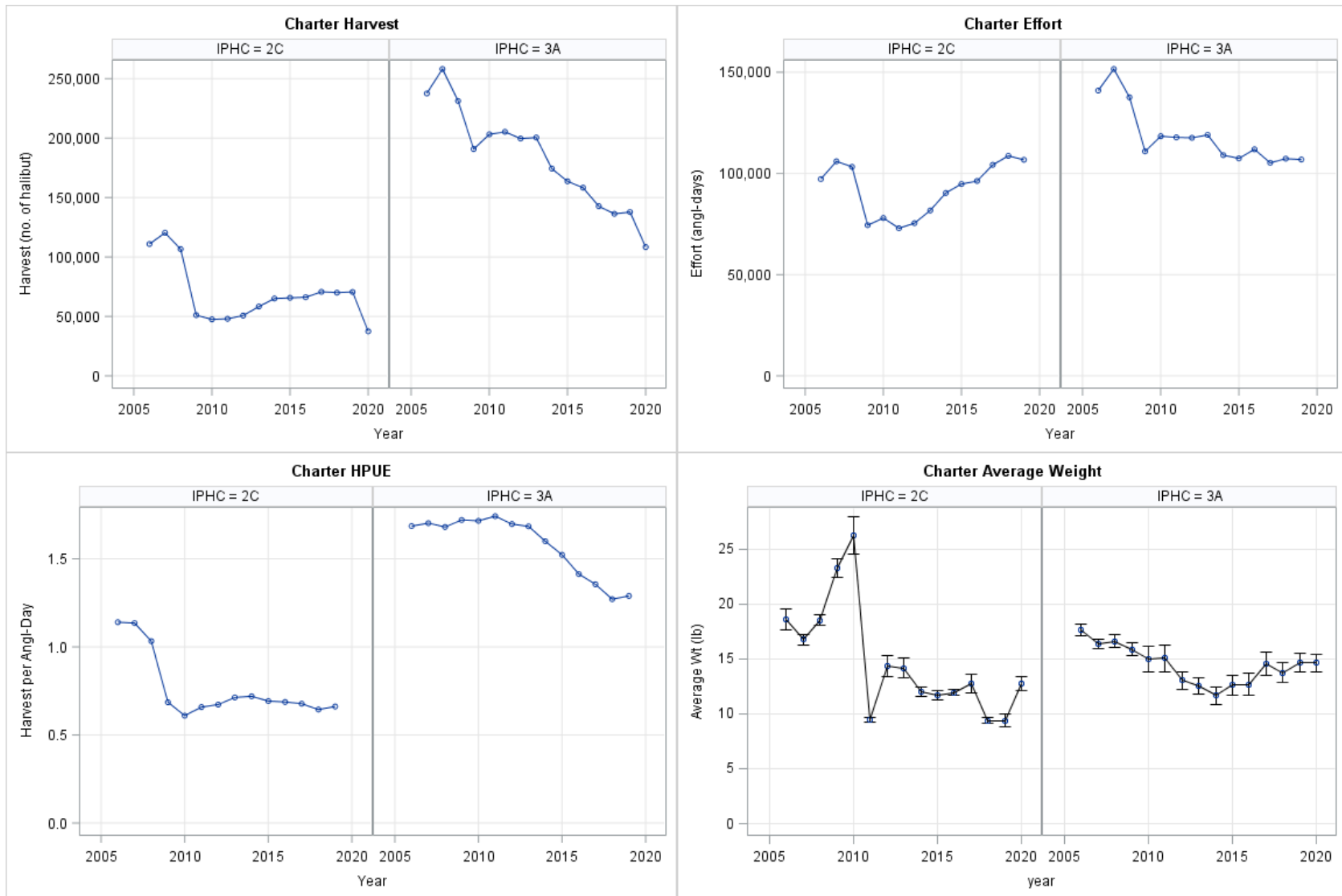


Figure 1. Harvest, effort, harvest-per-unit-effort, and mean weight in IPHC Areas 2C and 3A, 2006-2020 (effort and HPUE through 2019 only).



Figure 2. Harvest, effort, harvest-per-unit-effort, and mean weight by subarea in IPHC Area 2C, 2006-2020 (effort and HPUE through 2019 only).

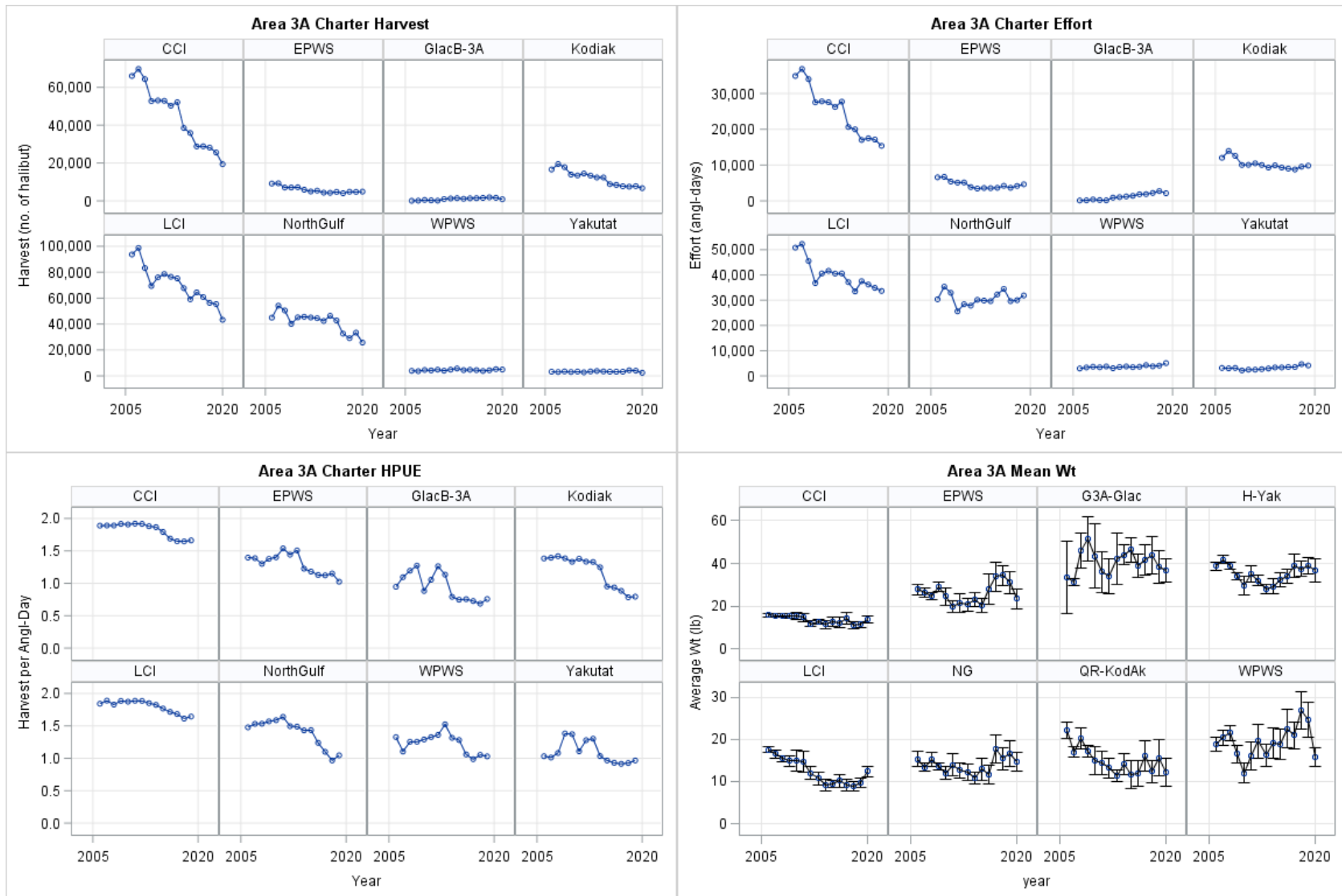
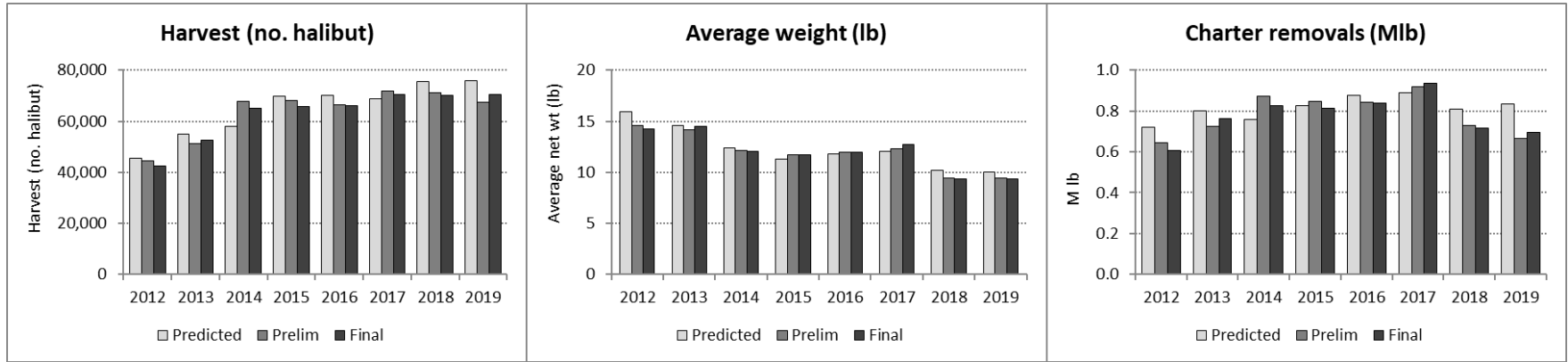


Figure 3. Harvest, effort, harvest-per-unit-effort, and mean weight by subarea in IPHC Area 3A, 2006-2020 (effort and HPUE through 2019 only).

Area 2C



Area 3A

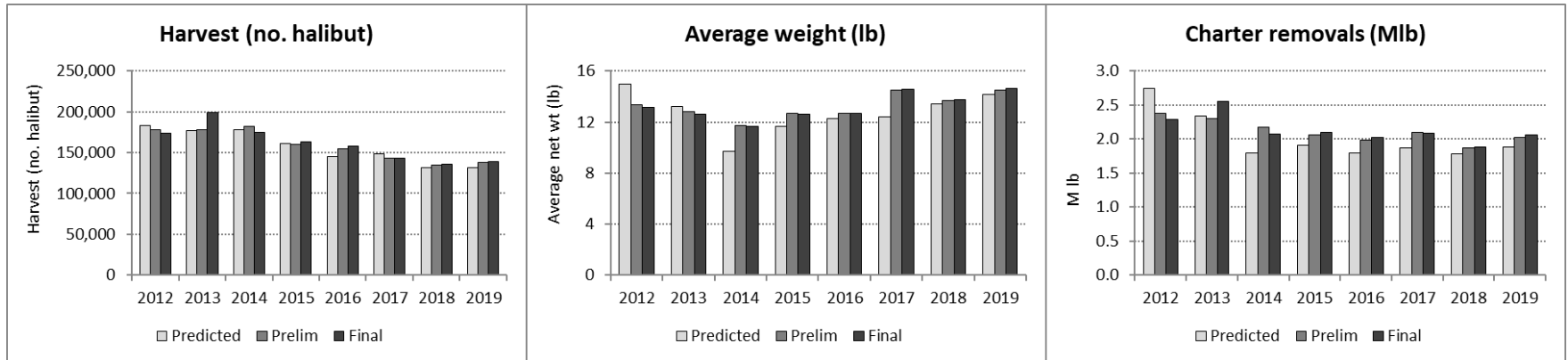


Figure 4. Comparison of predictions (prior to each season), preliminary estimates (based on partial-year logbook data), and final estimates of harvest, average weight, and total charter removals, Areas 2C and 3A, 2012-2019.