

MEMORANDUM

TO: Council, SSC and AP Members  
FROM: Chris Oliver *Chris*  
Executive Director  
DATE: September 24, 2007  
SUBJECT: GOA Sideboards

ESTIMATED TIME 5 HOURS (all C-4 items)
--

**ACTION REQUIRED**

Receive discussion paper and take action as necessary

**BACKGROUND**

At the April 2007, the Council reviewed a discussion paper on GOA sideboard limits and directed staff to expand the discussion paper to include assessments of the following:

- Potential conflicts between the CGOA Rockfish Pilot Program and Amendment 80 to determine overlaps, and if so, how sideboard limits might be combined, removed, or modified while maintaining the intent of the limits
- An option to allow AFA CV GOA sideboard exempt fleet to lease their BSAI pollock allocation during the B season (June 10 to November 1)
- Removing the 14 day stand down (July 1 to July 14) for CP vessels participating in the CGOA Rockfish Pilot Program and form cooperatives in the BSAI fisheries under Amendment 80
- Exempt non-AFA Pacific cod sideboarded crab vessels from GOA Pacific cod sideboards on November 1<sup>st</sup> if B season Pacific cod in WGOA and CGOA directed fisheries will not be fully harvested
- An option to change the formula for determining GOA Pacific cod sideboard exemption status for non-AFA crab vessels
- An option to exempt non-AFA crab vessels from GOA pollock sideboard limits who historically have been dependent upon the GOA pollock fishery
- Examine the number and collective harvest of crab rationalized vessels that have been sold and then enter the pot cod fishery in GOA.

Presented is an updated summary of the GOA sideboards and analysis of different options under consideration associated with the American Fisheries Act (AFA), Crab Rationalization Program, Rockfish Pilot Program, and Amendment 80. Due to time constraints, a few issues were not able to be completed in time for the October 2007 meeting. These items include an analysis on the number of crab licenses whose associated groundfish licenses that were later transferred and used on pot cod fishery and a discussion of the exemption from GOA pollock sideboard limits for crab rationalized vessels. The updated discussion paper is attached as Item C-4(c)(1).

## Summary of GOA Sideboards September 24, 2007

At the April 2007 meeting, staff presented a discussion paper over viewing the different GOA sideboard limits. At that meeting, the Council added several options adjusting the GOA sideboards and directed staff to update the discussion paper to include an analysis of these options for the October 2007 meeting. The following is the Council motion on GOA sideboards from the April 2007 meeting:

*The Council requests staff to incorporate the following issues into an updated draft of the GOA sideboard paper:*

### *GOA Sideboards*

- (1) A list of sideboard limits by fishery and area for the different rationalization programs and describe which sideboard limits have historically closed preseason to directed fishing and which sideboard limits have been open to directed fishing.*
- (2) Describe potential conflicts between the CGOA rockfish pilot program and Amendment 80. Do sideboard limits overlap for specific fisheries and if so could some sideboard limits be combined, removed or otherwise modified to maintain the intent of the limits.*

### *AFA Sideboards*

*Option 1 - Maintain the GOA AFA exempted fleet sideboard policy that requires vessels to fish their BSAI pollock allocation to maintain their exempted status.*

*Option 2 - For GOA AFA exempted fleet allow leasing of BSAI pollock allocations only during the B season BSAI pollock fishery (June 10 to November 1).*

### *Crab Rationalization Sideboards*

*On November 1<sup>st</sup> of each year if the B season Pacific cod quota in the WGOA and CGOA will not be reached by the participating vessels by December 31<sup>st</sup> then non-AFA side-boarded crab vessels would be exempt from the B season sideboard provisions for that sub area and can fully participate.*

*Crab rationalization sideboard changes to exempted vessel status for Pacific cod:*

*Option 1 - No changes to the exempted status requirements*

*Option 2 - Exempt non-AFA crab vessels from GOA Pacific cod sideboards if the vessel's Bering Sea Opilio allocation is less than 0.22% and the vessel landed more than 500 mt of GOA Pacific cod from 1996 to 2000.*

*Sub-Option A: To receive exempted status vessel/LLP would forfeit their BS opilio crab shares.*

*Sub-Option B: To receive exempted status vessel/LLP would forfeit their BS opilio crab shares that are in excess of the 100,000 pound landing threshold during the qualifying years 1996 to 2000.*

*Crab rationalization sideboards create an exempted vessel status for pollock:*

*Option 1 - No exempted status*

*Option 2 – Exempt non-AFA crab vessels from GOA pollock sideboards if the vessel's BS opilio allocation is less than 0.22% and the vessel had (1) 5 pollock deliveries (2) 10 pollock deliveries or (3) 20 pollock deliveries from 1996 to 2000.*

*An analysis of the number of licenses previously assigned to a vessel qualified for the crab rationalization program that were transferred and later used in the pot cod fishery in the GOA (in state and federal waters).*

Presented below is an updated summary of the GOA sideboards and options for consideration associated with the American Fisheries Act (AFA) BSAI Pollock Cooperative Program, Crab Rationalization Program, Rockfish Pilot Program, and Amendment 80 Cooperative Program. The Council's requested analysis of the different options will be marked as new. In addition, a table of all the GOA sideboard limits by fishery and area and a quick reference guide of GOA sideboard mechanics for the different rationalization programs are provided at the end of the discussion paper. Unfortunately, due to time constraints, a few issues were not able to be completed in time for the October 2007 meeting. These issues are presented below. It is the intent to provide the following information at the December Council meeting.

- (1) An analysis on the number qualified crab licenses whose associated groundfish licenses that were later transferred and used in the pot cod fishery
- (2) An exemption from GOA pollock sideboard limits for crab rationalized vessels

### **American Fisheries Act Sideboards**

The AFA was signed into law in October 1998. The purpose of the AFA was to tighten U.S. ownership standards for U.S. fishing vessels under the Anti-reflagging Act, and to provide the BSAI pollock fleet the opportunity to conduct their fishery in a more rational manner while protecting non-AFA participants in the other fisheries.

The AFA requires the protection of participants in other U.S. fisheries that could be negatively affected by the BSAI pollock fleet. Given that the 20 catcher/processors listed in paragraphs 208(e)(1) through (20) are restricted from harvesting any GOA groundfish, the summary of AFA GOA sideboards focuses on the AFA catcher vessels of which there were 110 in 2007. As shown in Figure 1, the AFA CP sector is restricted from harvesting any GOA groundfish, so the sector has no GOA sideboards. For the AFA trawl CV sector, there are groundfish and halibut PSC sideboards. Provided below is summary of these sideboards for the AFA trawl CV sector.

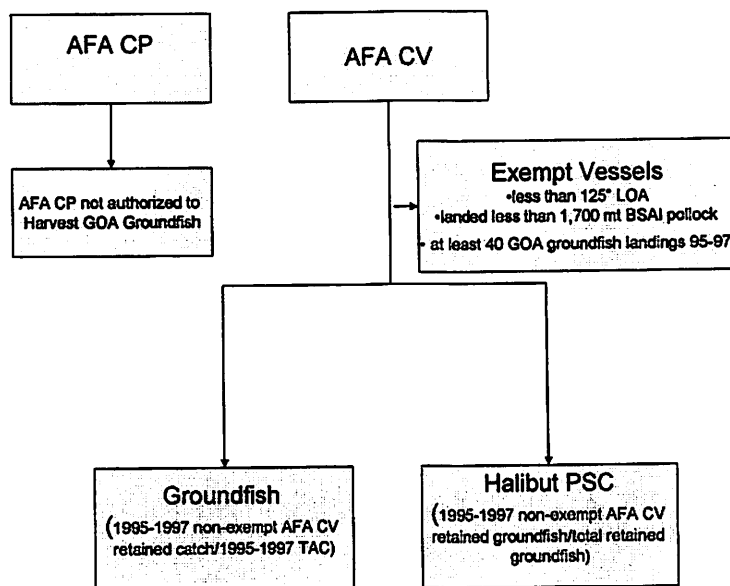
#### *Catcher Vessel Exemptions*

Before addressing GOA groundfish sideboard limits for the AFA vessels, a summary of exemptions are presented. Exemptions are included up front because sideboard limits do not apply to these vessels and the exempt vessel's historic catch is not included in the sideboard calculations. An exemption for AFA trawl catcher vessels less than 125' LOA that landed less than 1,700 mt of BSAI pollock on average during 1995-1997 was developed for those vessels with a high economic dependence on the GOA fisheries. These vessels were exempted from the sideboard limits if they made at least 40 GOA groundfish landings from 1995-1997. The Council recommended and approved the exemption with the understanding that vessels holding GOA exemptions would not lease their BS pollock in years that they exceed their 1995-1997 GOA harvest level. To ensure the Council's intent is met, the AFA CV sector utilizes a Catcher Vessel Intercooperative Agreement.

For 2007, there were 16 AFA catcher vessels exempt from GOA groundfish sideboard limits. As noted above, the catch history of the exempt vessels is not included when NMFS determines the overall

sideboard cap amounts. Since their historic catch is not included in the calculation of the limits, catch of these vessels will not count towards the sideboard limits. In addition, if GOA directed fishery is open and an AFA catcher vessel sideboard limit is reached, exempt AFA trawl catcher vessels are not required to stop fishing.

Figure 1. Diagram of AFA sideboard limits for GOA



### GOA Groundfish Sideboard Limits

GOA groundfish sideboard limits for AFA CVs are based on the sector's (excluding exempt vessels) ratio of aggregate retained catch for each groundfish species or species group during 1995-1997 relative to the sum of the TACs for that species or species group. NMFS sets a single AFA catcher vessel sideboard cap for each groundfish species. That amount is then made available to all non-exempt AFA catcher vessels on a seasonal basis at the beginning of the year. After NMFS sets the limit, the cooperatives then divide the limit among themselves. Because the AFA CV sideboard limits must be shared amongst the different cooperatives, an inter-cooperative agreement was developed to divide the AFA trawl CV sideboard limit among the cooperatives and set penalties for exceeding the limit. Then each cooperative determines how their portion of the sideboard limit is divided among the member vessels. Table 1 shows the GOA sideboard ratio for the AFA trawl CV sector, the 2006 sideboard amounts, and sideboard catch for 2006.

NMFS closes directed fisheries to AFA-listed catcher vessels when sideboard amounts are inadequate to support a directed fishery. The closures will be timed so that adequate amounts of sideboard limits are available for bycatch needs in other directed fisheries. This is done to help ensure that no sideboard caps are exceeded. NMFS will only open directed fishing for a species when adequate sideboard amounts exist at the start of the fishing year to cover both the bycatch needs of that species in other fisheries and the directed fishery harvest. As Table 2 shows, there are a number of GOA groundfish fisheries closed for the AFA trawl CV sector during the 2006 and 2007 season due to small sideboard limits.

*Halibut PSC Sideboards*

Sideboard limits were also developed for halibut PSC in the GOA. Those sideboard limits are equal to the ratio of total retained groundfish catch by non-exempt AFA catcher vessels in each PSC target category from 1995 to 1997 relative to the total retained catch of all vessels in that fishery from 1995 to 1997. Table 3 presents the halibut PSC sideboard ratios, the 2006 and 2007 halibut PSC limit, and the 2006 and 2007 non-exempt AFA catcher vessel halibut PSC sideboard limit by target fishery and season.

**Table 1. 2006 GOA non-exempt AFA CV groundfish harvest sideboard limitations (mt) and sideboard catch (mt)**

Species	Apportionments and allocations by area/season/processor/gear	Ratio of 1995-1997 non-exempt AFA CV catch to 1995-1997 TAC	2006 non-exempt AFA catcher vessel sideboard	Total Catch	Remaining Quota
Pollock	Shumagin (610) A,B, C, & D	0.6112	17,674	4,441	13,233
	Chirikof (620) A, B, C, & D	0.1427	4,350	2,991	1,359
	Kodiak (630) A, B, C, & D	0.2438	4,498	632	3,866
	WYK (640)	0.3499	627	0	627
Pacific cod	SEO (650)	0.3499	2,154	0	2,154
	W inshore	0.1423	2,580	6	2,574
	W offshore	0.1026	207	0	207
	C inshore	0.0722	1,845	406	1,439
	C offshore	0.0721	205	0	205
	E inshore	0.0079	26	0	26
	E offshore	0.0078	3	0	3
	Flatfish deep-water	W	0	0	0
C		0.067	277	9	268
E		0.0171	70	0	70
Rex sole	W	0.001	1	0	1
	C	0.0402	221	40	181
	E	0.0153	39	0	39
Flathead sole	W	0.0036	7	3	4
	C	0.0261	131	64	67
	E	0.0048	10	0	10
Flatfish shallow-water	W	0.0156	70	0	70
	C	0.0598	777	162	615
	E	0.0126	31	0	31
Arrowtooth flounder	W	0.0021	17	7	10
	C	0.0309	773	495	278
	E	0.002	10	0	10
Sablefish	W trawl gear	0	0	0	0
	C trawl gear	0.072	93	50	43
	E trawl gear	0.0488	14	0	14
Pacific ocean perch	W	0.0623	259	6	253
	C	0.0866	642	511	131
	E	0.0466	125	0	125
Shortraker rockfish	W	0	0	0	0
	C	0.0237	8	20	-12

Species	Apportionments and allocations by area/season/processor/gear	Ratio of 1995-1997 non-exempt AFA CV catch to 1995-1997 TAC	2006 non-exempt AFA catcher vessel sideboard	Total Catch	Remaining Quota
	E	0.0124	4	0	4
<b>Rougeye rockfish</b>	W	0	0	0	0
	C	0.0237	14	10	4
	E	0.0124	3	0	3
<b>Other rockfish</b>	W	0.0034	2	0	2
	C	0.2065	80	9	71
	E	0	0	0	0
<b>Northern rockfish</b>	W	0.0003	0	0	0
	C	0.0336	121	111	10
<b>Pelagic shelf rockfish</b>	W	0.0001	0	3	-3
	C	0	0	61	-61
	E	0.0067	5	0	5
<b>Thornyhead rockfish</b>	W	0.0308	16	0	16
	C	0.0308	30	13	17
	E	0.0308	22	0	22
<b>Big skates</b>	W	0.009	6	0	6
	C	0.009	20	24	-4
	E	0.009	5	0	5
<b>Longnose skates</b>	W	0.009	1	0	1
	C	0.009	18	10	8
	E	0.009	8	0	8
<b>Other skates</b>	GW	0.009	15	4	11
<b>Demersal shelf rockfish</b>	SEO	0.002	1	0	1

**Table 2. 2006 and 2007 non-exempt AFA catcher vessel sideboard directed fishing closures in the GOA (mt)**

Species	Regulatory area/district	Gear	Incidental catch
Pacific cod	Eastern GOA	all	26 (inshore 2006)
			19 (inshore 2007)
			3 (offshore 2006)
			2 (offshore 2007)
Deep-water flatfish	Western GOA	all	0
Rex sole	Western GOA	all	1
Flathead sole	Eastern and Western	all	10 and 7 (2006)
	GOA.		13 and 7 (2007)
Shallow-water flatfish	Eastern GOA	all	31
Arrowtooth flounder	Eastern and Western	all	10 and 17
	GOA.		
Northern rockfish	Western GOA	all	0
Pelagic shelf rockfish	entire GOA	all	0 (W), 0 (C), 5(E)
Demersal shelf rockfish	SEO District	all	1

**Table 3. 2006 and 2007 non-exempt AFA catcher vessel PSC limits for the GOA (mt)**

PSC species	Season	Target fishery	Ratio of 1995–1997 non-exempt AFA CV retained catch to total retained catch	2006 and 2007 PSC limit	2006 and 2007 non-exempt AFA catcher vessel PSC limit
Halibut mortality	Trawl 1st seasonal allowance	shallow-water	0.34	450	153
	January 20–April 1	deep-water	0.07	100	7
	Trawl 2nd seasonal allowance	shallow-water	0.34	100	34
	April 1–July 1	deep-water	0.07	300	21
	Trawl 3rd seasonal allowance	shallow-water	0.34	200	68
	July 1–September 1	deep-water	0.07	400	28
	Trawl 4th seasonal allowance	shallow-water	0.34	150	51
	September 1–October 1	deep-water	0.07	0	0
	Trawl 5th seasonal allowance	all targets	0.205	300	61
	October 1–December 31				

*Stand Downs*

Although not a sideboard specifically associated with the AFA, there are stand down requirements for trawl CVs that fish in both the BSAI and GOA (§ 679.23(h)) that impact AFA trawl CVs. A trawl CV operating in the BSAI while pollock or Pacific cod are open for directed fishing is prohibit from deploying trawl gear in the Western and Central GOA for three days after the date of landing or

transferring all of the vessel's BSAI groundfish. An exception applies to directed fishing for Pacific cod in the GOA for processing by the offshore sector. In a similar fashion, a trawl CV operating in the Western GOA while pollock or inshore Pacific cod is open for directed fishing in the Western GOA is restricted from using its trawl gear in the BSAI for three days after the date of landing or transferring all of its Western GOA groundfish. Finally, a trawl CV operating in the Central GOA area while pollock or inshore Pacific cod is open to directed fishing is required to stand down for two days after landing or transferring its Central GOA groundfish before operating in the BSAI. There is no stand down for a trawl CV fishing in the CDQ fishery.

***Proposed Sideboard Options for the AFA GOA Sideboard Exempt Vessels (New)***

In April 2007, the Council proposed options for analysis that would allow the AFA GOA exempted fleet to lease their BSAI pollock allocation during the B season BSAI pollock fishery. The following are the options proposed by the Council:

**Option 1: Maintain the AFA GOA exempted fleet sideboard policy that requires vessels to fish their BSAI pollock allocation to maintain their exempted status.**

**Option 2: For AFA GOA exempted fleet allow leasing of BSAI pollock allocations only during the B season BSAI pollock fishery (June 10 to November 1)**

As indicated in recent American Fisheries Act Catcher Vessel Intercooperative Annual Reports to the Council, GOA sideboard exempt vessels have been negatively affected by Chinook and chum salmon savings area closures, rising fuel prices, and low CPUE in pollock fishing grounds south of Pribilof Islands. Consequently, the AFA GOA sideboard exempted fleet routinely strands BS pollock, which is asserted to cause economic hardship for this fleet. For example, in the 2006, the GOA exempt vessels left 14,790 mt of BS pollock unharvested. In another example, approximately 3,850 mt pollock was left unharvested by the AFA GOA sideboard exempted fleet in 2004. Note, although the pollock lease restriction applies to the entire year's catch, the data in this analysis only looks at catch during the June 10 to November 1 period given that Option 2 only applies during this same time period.

To alleviate some of the impacts of large Chinook and chum salmon savings area closures, the Council in 2005 approved Amendment 84 which modifies the existing bycatch reduction measures for Chinook and chum salmon in the BSAI groundfish FMP. The action suspends the regulatory salmon savings area closures and allows pollock cooperatives and CDQ groups to utilize a voluntary rolling hot spot closure system to avoid salmon bycatch. Despite delays in implementing Amendment 84, the pollock fleet to include the AFA GOA sideboard exempt fleet, through the use of a Exempted Fishing Permit, has been operating under a voluntary rolling hot spot system since the middle of the 2006 "B" season.

To get an idea of historical catch patterns for the AFA GOA sideboard exempt fleet during the BSAI "B" season, Table 4 provides the number of vessels making BSAI "B" season pollock landings and GOA groundfish landings from 1995 to 1997 and 2000 to 2006. The number of vessels making pollock landings in the BSAI "B" season was significantly fewer during the 1995-1997 period compared to the 2000-2006 period. During those periods, the number of AFA GOA sideboard exempt vessels making GOA groundfish landings remained virtually constant at 14. In 2006, 9 vessels made pollock landings in the BSAI "B" season relative to previous five years, while the number of vessels making GOA groundfish landings declined to 12.

Since 2000, the AFA GOA sideboard exempt fleet has exceeded their 1995-1997 average catch of GOA groundfish. Table 5 provides harvest data for the exempt fleet for the June 10 to November 1 period from 1995-1997 by species and area. During this period, the fleet targeted mostly pollock in the BSAI, while in



the GOA the fleet targeted mostly pollock and Pacific cod. During the 1995 to 1997 period, the average GOA catch for the AFA GOA sideboard exempted fleet was 9,014 mt. Table 5 also provides GOA and BSAI catch and vessel count for the AFA GOA sideboard exempt fleet for the June 10 to November 1 period from 1995 to 1997 and 2000 to 2006 by species and area. Between June 10 and November 1 for 2004 and 2005, the AFA GOA sideboard exempted fleet caught 19,742 mt and 15,575 mt of BS pollock, respectively, while in 2006, they caught only 7,201 mt BS pollock. In the GOA, the AFA GOA sideboard exempted fleet focused mostly on pollock, Pacific cod during the 2004 and 2005 fishing season. However, in 2006, the AFA GOA exempted fleet focused less on Pacific cod and more on other groundfish. Overall, the data indicates that the AFA GOA sideboard exempt fleet since 2000 has exceeded their 1995-1997 average catch of GOA groundfish.

**Table 4. Number of vessels making BSAI “B” season pollock landings and GOA groundfish landings from 1995-1997 and 2000-2006**

Year	1995	1996	1997	2000	2001	2002	2003	2004	2005	2006
Number of Vessels making pollock landings	6	8	7	12	14	15	15	13	12	9
Number of Vessels making groundfish landings	14	14	13	14	14	14	14	14	14	12

Under Option 2, the AFA GOA sideboard exempted fleet would be allowed to lease their “B” season BS pollock. The ability to lease the BSAI “B” season pollock adds flexibility to the AFA GOA sideboard exempt fleet to either harvest their BSAI “B” season pollock themselves or lease their pollock allocation and continue to fish in the GOA. In general, the AFA GOA sideboard exempt vessels will lease their “B” season BS pollock allocation as long as the perceive benefit from leasing is greater than the cost of leasing. In most cases, it is expected the AFA GOA sideboard exempt vessels would lease their BSAI B season pollock given they have routinely left BS pollock allocations unharvested due to continued rising fuel costs and lower CPUE for B season BS pollock. Overall, it would be expected that the ability to lease their “B” season pollock will likely substantially reduce the amount of BS pollock that is left stranded.

One potential impact of selecting Option 2 is the combined AFA GOA sideboard exempt vessels catch of GOA groundfish during the June 10 to November 1 period would likely increase beyond their 2000-2006 historic GOA catch. The primary source of increased GOA groundfish catch by the AFA GOA sideboard exempt vessels would likely originate from effort once directed at BS “B” season pollock that could now be directed at GOA groundfish fisheries. As an indication of past harvest behavior for the AFA GOA sideboard exempt fleet, the harvest of BS “B” season pollock by the AFA GOA sideboard exempt fleet has been greater than 15,000 mt from 2001 to 2005. Given that most AFA GOA sideboard exempt vessels would likely lease their B season BS pollock that effort once directed at B season BS pollock could be directed at GOA groundfish.

Finally, as noted above, the Council recommended and approved the exemption from GOA sideboards for those eligible AFA vessels with the understanding that the vessels holding the exemption would not lease their BS pollock in years that they exceed their 1995-1997 GOA harvest level. Currently the Council’s original intent is enforced not through a federal regulation but rather the Catcher Vessel Intercooperative Agreement. Since there are no federal regulations that prohibit leasing of BS pollock by the AFA GOA sideboard exempt fleet, the action in Option 2, permitting the AFA GOA sideboard exempt fleet to lease their B season pollock, is not necessary. If the Council wished to pursue a regulatory amendment, the action in Option 2 would prohibit leasing of A season BS pollock by the AFA GOA sideboard exempt vessels when the vessel exceeded its GOA harvest level for that same time period.

**Table 5. Catch and vessel count by area from AFA GOA exempt vessels during the June 10 – November 1 period from 1995-1997 and 2000-2006**

Year	Area	Fishery	Harvest (mt)	Vessel Count
1995	BSAI	Pacific cod	43	6
		Pollock	5,524	6
		<b>Total</b>	<b>5,566</b>	
	GOA	Other Groundfish	947	11
		Pacific cod	841	11
		Pollock	5,174	14
		<b>Total</b>	<b>6,962</b>	
1996	BSAI	Other Groundfish	*	3
		Pacific cod	*	9
		Pollock	5,880	8
		<b>Total</b>	<b>6,043</b>	
	GOA	Other Groundfish	2,366	11
		Pollock	4,825	12
		<b>Total</b>	<b>7,190</b>	
1997	BSAI	Other Groundfish	1,676	4
		Pacific cod	16	7
		Pollock	3,490	7
		<b>Total</b>	<b>3,507</b>	
	GOA	Other Groundfish	3,739	12
		Pacific cod	2,051	13
		Pollock	7,247	13
<b>Total</b>		<b>13,037</b>		
2000	BSAI	Other Groundfish	31	9
		Pacific cod	43	11
		Pollock	11,902	12
		<b>Total</b>	<b>11,976</b>	
	GOA	Other Groundfish	4,604	14
		Pacific cod	595	14
		Pollock	4,901	14
<b>Total</b>		<b>10,100</b>		
2001	BSAI	Other Groundfish	6	4
		Pacific cod	47	14
		Pollock	19,985	14
		<b>Total</b>	<b>20,038</b>	
	GOA	Other Groundfish	4,118	14
		Pacific cod	2,805	14
		Pollock	3,272	14
<b>Total</b>		<b>10,196</b>		
2002	BSAI	Other Groundfish	21	12
		Pacific cod	102	15
		Pollock	22,502	15
		<b>Total</b>	<b>22,625</b>	
	GOA	Other Groundfish	4,328	14
		Pacific cod	612	14
		Pollock	6,687	14
<b>Total</b>		<b>11,262</b>		

Year	Area	Fishery	Harvest (mt)	Vessel Count
2003	BSAI	Other Groundfish	38	15
		Pacific cod	130	15
		Pollock	21,334	15
		<b>Total</b>	<b>21,502</b>	
	GOA	Other Groundfish	4,452	14
		Pacific cod	2,289	14
		Pollock	4,975	14
		<b>Total</b>	<b>11,716</b>	
2004	BSAI	Other Groundfish	80	13
		Pacific cod	100	13
		Pollock	19,742	13
		<b>Total</b>	<b>19,922</b>	
	GOA	Other Groundfish	4,076	14
		Pacific cod	2,683	14
		Pollock	5,930	13
		<b>Total</b>	<b>12,689</b>	
2005	BSAI	Other Groundfish	80	12
		Pacific cod	47	12
		Pollock	15,575	12
		<b>Total</b>	<b>15,703</b>	
	GOA	Other Groundfish	4,241	14
		Pacific cod	1,261	14
		Pollock	5,227	14
		<b>Total</b>	<b>10,728</b>	
2006	BSAI	Other Groundfish	45	9
		Pacific cod	14	9
		Pollock	7,201	9
		<b>Total</b>	<b>7,260</b>	
	GOA	Other Groundfish	5,294	12
		Pacific cod	703	12
		Pollock	7,792	12
		<b>Total</b>	<b>13,789</b>	

\*Concealed for confidentiality.

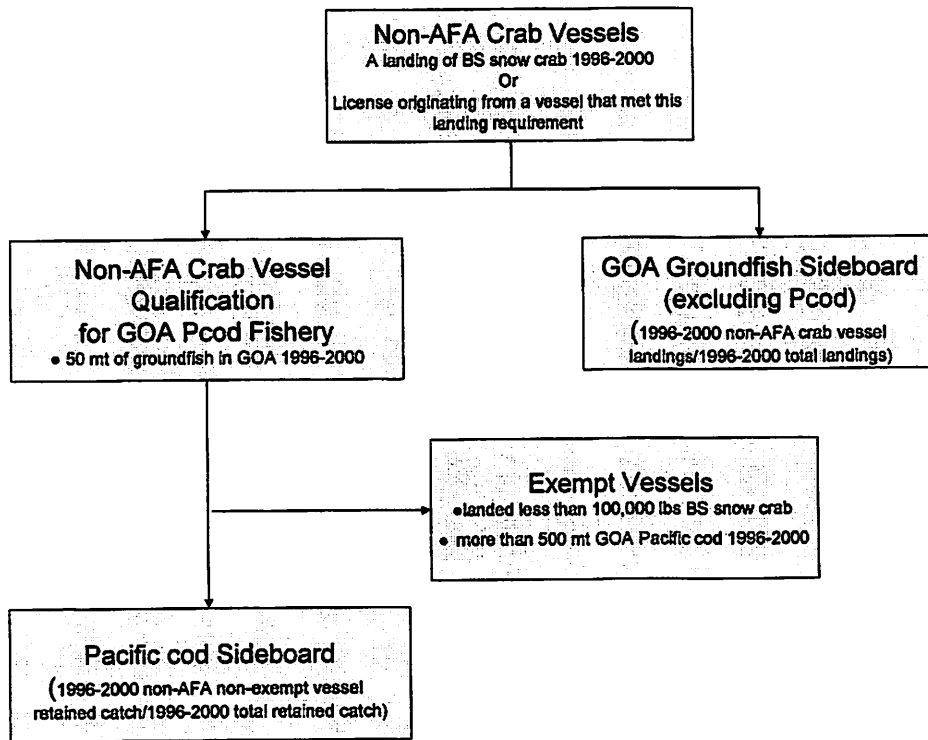
### Crab Rationalization Sideboards

The Crab Rationalization Program was implemented in March of 2005. The program allocates BSAI crab resources among harvesters, processors, and coastal communities and builds on the Council's experiences with the halibut/sablefish IFQ program and the AFA cooperative program. Recognizing that rationalizing the BSAI crab fisheries could provide opportunities for fishermen to alter their crab fishing patterns and take greater advantage of other fisheries, the Council included GOA groundfish sideboards for non-AFA vessels that qualified for the Bering Sea snow crab IFQ fishery. Figure 2 provides a diagram of the non-AFA crab vessel sideboard program for the GOA. As noted in the figure, separate sideboard limits exist for GOA groundfish and GOA Pacific cod. There is also a qualification requirement for non-AFA crab vessels to participate in the GOA Pacific cod fishery. Finally, vessels that exceed a specific harvest level of GOA Pacific cod from 1996 to 2000 would be exempt from GOA Pacific cod sideboard limits.

*GOA Groundfish Sideboards Limit (except Pacific cod)*

GOA groundfish (other than Pacific cod and fixed-gear sablefish) sideboard limits for non-AFA crab vessels are based on GOA groundfish landings by qualified vessels<sup>1</sup> relative to groundfish landings by all vessels from 1996 to 2000. For GOA Pacific Cod, the sideboard limit is based on retained catch of Pacific cod by qualified vessels, excluding BSAI snow crab qualified vessels that are prohibited from participating in the GOA Pacific cod fishery and vessels exempt from GOA sideboards limits, divided by the total retained catch of Pacific cod by all groundfish vessels. These same GOA groundfish sideboard restrictions apply in the State of Alaska parallel groundfish fisheries for those qualified BSAI snow crab vessels with a Federal Fisheries Permit or LLP license. Table 6 shows the GOA sideboard ratio for the non-AFA crab vessels, the 2006 sideboard amounts, and sideboard catch for 2006.

**Figure 2. Diagram of Non-AFA crab vessel sideboard program for the GOA**



*GOA Pacific cod Sideboard Limit*

In addition to the GOA groundfish sideboards for the non-AFA crab vessels, participation in the GOA Pacific cod fishery is restricted. Vessels that qualified for the Bering Sea snow crab quota must have landed more than 50 mt of groundfish harvested from the GOA between January 1, 1996, and December 31, 2000 in order to qualify to participate in the GOA Pacific cod fishery. This restriction also applies to any vessel named on an LLP that generated Bering Sea snow crab fishery quota share.

As noted above, there is an exemption from GOA Pacific cod sideboard limits for vessels that qualify. Exempt BSAI snow crab qualified vessels landed less than 100,000 lbs of Bering Sea snow crab and more

<sup>1</sup> Any non-AFA vessel that made a landing of Bering Sea snow crab between January 1, 1996, and December 31, 2000 and any vessel named on an LLP licenses that was generated in whole or part by the fishing history of a qualified vessel.

than 500 mt of GOA Pacific cod between 1996 and 2000. The exemption was developed for those qualified vessels that demonstrated dependence on the GOA fisheries. The catch history of the exempt vessels is not included in the sideboard limit calculation. Since their historic catch is not included in the sideboard limits, catch of these vessels will not count towards the sideboard caps nor are the exempt vessels required to stop fishing when the sideboard limit is reached, if the directed fishery is open.

### *Management of GOA Sideboard Limit*

NMFS manages the sideboard limits by setting a single sideboard cap for each GOA groundfish species. That amount is then made available to all qualified vessels subject to the cap on a seasonal basis at the beginning of the year. All targeted or incidental catch of sideboard species made by the non-AFA crab vessels will be deducted from the sideboard limit.

As with the AFA trawl CV sideboards, NMFS will close the directed fisheries to those non-AFA BSAI snow crab vessels subject to the cap that qualify to participate in the GOA groundfish fisheries when sideboard amounts are inadequate to support a directed fishery. The exception would those vessels that are exempt from GOA Pacific cod sideboards. These exempt vessels would be allowed to fish for GOA Pacific cod as long as directed fishing continued.

Sideboard limit closures will be timed so that adequate amounts of the species are available for bycatch needs in other directed fisheries. This is done to help ensure that no sideboard caps are exceeded. NMFS will only open directed fishing for a species when adequate sideboard amounts exist at the start of the fishing year to cover both the bycatch needs of that species in other fisheries and the directed fishery harvest. In 2006 and 2007, only the Western and Central GOA Pacific cod were open for directed fishing for the qualified non-AFA crab vessels. The remaining GOA groundfish fisheries were closed as the sideboard limits were necessary for incidental catch to support Pacific cod fishery incidental catch.

### *Number of Crab Vessels and Licenses Affected by GOA Sideboard*

In the NMFS Crab LLP database, there are 227 crab vessels that made a landing of BS snow crab during the 1996 to 2000 period. These vessels are limited by the GOA groundfish sideboards. Of these 227 crab vessels, 137 are prohibited from fishing for GOA Pacific cod, 85 crab vessels are allowed to target GOA Pacific cod but limited by a GOA Pacific cod sideboard, and 5 are exempt from the GOA Pacific cod sideboard limit.

There are 57 groundfish LLP licenses that originated on qualified crab vessels. Vessels that use these licenses are also limited by the GOA groundfish sideboards. Of the 57 licenses, 12 licenses prohibit the vessel using that license from directed fishing in the GOA Pacific cod fishery, 35 licenses limit the vessel using that LLP license to the GOA Pacific cod sideboard, and 5 of these LLP licenses would exempt that vessel using that license from the GOA Pacific cod sideboard limit.

In cases where vessels are subject to one sideboard (i.e., GOA Pacific cod sideboard) and the LLP license used on that vessel is more restrictive (i.e., prohibited from fishing GOA Pacific cod) the more restrictive measure applies. The converse is true as well, LLP licenses subject to GOA Pacific cod sideboard and used on a vessel prohibited from fishing GOA Pacific cod would not relieve that vessel from the sideboard limit prohibiting GOA Pacific cod fishing.

**Table 6. Final 2007 GOA non-AFA crab vessel groundfish harvest sideboard limitations**

Species	Apportions and allocations by area/processor/gear	Ratio of 1996-2000 non-AFA crab vessel catch to 1996-2000 total harvest	Proposed 2007 TAC	2007 non-AFA crab vessel sideboard limit
Pollock	<b>A Season (W/C areas only)</b>			
	<b>January 20 - March 10</b>			
	Shumagin (610)	0.0098	4,511	44
	Chirikof (620)	0.0031	7,357	23
	Kodiak (630)	0.0002	3,320	1
	<b>B Season (W/C areas only)</b>			
	<b>March 10 - May 31</b>			
	Shumagin (610)	0.0098	4,511	44
	Chirikof (620)	0.0031	8,924	28
	Kodiak (630)	0.0002	1,753	0
	<b>C Season (W/C areas only)</b>			
	<b>August 25 - October 1</b>			
	Shumagin (610)	0.0098	7,995	78
	Chirikof (620)	0.0031	2,304	7
	Kodiak (630)	0.0002	4,889	1
	<b>D Season (W/C areas only)</b>			
	<b>October 1 - November 1</b>			
	Shumagin (610)	0.0098	7,995	78
	Chirikof (620)	0.0031	2,304	7
	Kodiak (630)	0.0002	4,889	1
<b>Annual</b>				
WYK (640)	0	1,398	0	
SEO (650)	0	6,157	0	
Pacific cod	<b>A Season</b>			
	<b>January 1 - June 10</b>			
	W inshore	0.0902	10,876	981
	W offshore	0.2046	1,208	247
	C inshore	0.0383	15,339	587
	C offshore	0.2074	1,704	353
	<b>B Season</b>			
	<b>September 1 - December 31</b>			
	W inshore	0.0902	7,251	654
	W offshore	0.2046	806	165
	C inshore	0.0383	10,226	392
	C offshore	0.2074	1,136	236
	<b>Annual</b>			
	E inshore	0.011	3,346	37
E offshore	0	372	0	
Flatfish deep-water	W	0.0035	420	1
	C	0	4,163	0
	E	0	4,124	0

Species	Apportions and allocations by area/processor/gear	Ratio of 1996-2000 non-AFA crab vessel catch to 1996-2000 total harvest	Proposed 2007 TAC	2007 non-AFA crab vessel sideboard limit
Rex sole	W	0	1,147	0
	C	0	5,446	0
	E	0	2,507	0
Flathead sole	W	0.0002	2,000	0
	C	0.0004	5,000	2
	E	0	2,148	0
Flathead shallow-water	W	0.0059	4,500	27
	C	0.0001	13,000	1
	E	0	2,472	0
Arrowtooth flounder	W	0.0004	8,000	3
	C	0.0001	30,000	3
	E	0	5,000	0
Sablefish	W	0	494	0
	C	0	1,238	0
	E	0	283	0
Pacific ocean perch	W	0	4,244	0
	C	0	7,612	0
	E	0	2,780	0
Shortraker rockfish	W	0.0013	153	0
	C	0.0012	353	0
	E	0.0009	337	0
Rougheye rockfish	W	0.0067	136	1
	C	0.0047	611	3
	E	0.0008	241	0
Other rockfish	W	0.0035	577	2
	C	0.0033	386	1
	E	0	519	0
Northern rockfish	W	0.0005	1,439	1
	C	0	3,499	0
Pelagic shelf rockfish	W	0.0017	1,466	2
	C	0	3,325	0
	E	0	751	0
Thornyhead rockfish	W	0.0047	513	2
	C	0.0066	989	7
	E	0.0045	707	3
Big skate	W	0.0392	695	27
	C	0.0159	2,250	36
	E	0	599	0
Longnose skate	W	0.0392	65	3
	C	0.0159	1,969	31
	E	0	861	0

Species	Apportions and allocations by area/processor/gear	Ratio of 1996-2000 non-AFA crab vessel catch to 1996-2000 total harvest	Proposed 2007 TAC	2007 non-AFA crab vessel sideboard limit
Other skates	GW	0.0176	1,617	28
DSR	SEO	0	410	0
Atka mackerel	GW	0	1,500	0
Other species	GW	0.0176	4,500	79

***Proposed Exemption from B Season Pacific cod Sideboard Limit after November 1 (New)***

In April 2007, the Council proposed an option that would exempt non-AFA sideboarded crab vessels from B season sideboard limits for Pacific cod after November 1 if the quota in the specific sub-area would not be reached by the participating vessels by December 31<sup>st</sup>. Although it is not noted in the motion, it is assumed the exemption would apply only to those non-AFA crab vessels/licenses that are eligible to participate in the GOA Pacific cod fishery.

GOA Pacific cod fishing is divided into two seasons. For fixed gear, the A season is January 1 through June 10, while the B season is September 1 through December 31. For trawl gear, the A season January 20 through June 10, while the B season is September 1 through November 1. The seasonal Pacific cod allocations are apportioned between the inshore sector (90 percent of the TAC) and offshore sector (10 percent of the TAC). Any overage or underage of GOA Pacific cod allowance from the A season may be subtracted from or added to the subsequent B season allowance. Note, the Council is currently reviewing a preliminary analysis of GOA Pacific cod sector split that could potentially impact this proposed exemption.

As noted in Table 7, for 2005 and 2006, a large amount of the B season inshore Pacific cod quota was left unharvested for both Western and Central Gulf. For example, in 2005, 4,028 mt of the B season inshore Western Gulf was left unharvested. In 2006, 5,931 mt of Pacific cod in the B season inshore sector of the Western Gulf was left unharvested. Given that the trawl sectors are prohibited from fishing for GOA Pacific cod after November 1 due to Steller sea lion regulations and based on current harvest patterns of GOA Pacific cod during the B season, there appears to be available TAC for the eligible non-AFA crab Pacific cod participants to harvest any remaining Western and Central Gulf inshore Pacific cod after November 1, but less available TAC from the offshore apportionment.

**Table 7. Gulf of Alaska Seasonal Catch Report for 2005 and 2006**

		2005			2006			
		Total Catch	Quota	Remaining Quota	Total Catch	Quota	Remaining Quota	
Western Gulf	Inshore	A	10,298	8,471	-1,827	12,299	10,876	-1,423
		B	1,619	5,647	4,028	1,320	7,251	5,931
	Offshore	A	123	941	818	666	1,208	542
		B	238	628	390	363	806	443
Central Gulf	Inshore	A	12,688	13,547	859	15,529	15,339	-190
		B	8,104	9,031	927	4,723	10,226	5,503
	Offshore	A	91	1,505	1,414	25	1,704	1,679
		B	77	1,003	926	1,125	1,136	11



## ***Proposed Sideboard Options for Non-AFA Crab Rationalized Vessels (New)***

As noted above, the Council included an exemption for those qualified vessels that demonstrated dependence on the GOA Pacific cod fishery. In April 2007, the Council proposed an option to make the exempted vessel status for those crab vessels that participate in the GOA Pacific cod fishery slightly less stringent in order provide GOA Pacific cod dependent fishermen sideboard exemption status for GOA Pacific cod fishery. In addition, the Council included an option that would exempt non-AFA crab vessels that participate in the GOA pollock fishery from GOA pollock sideboard limits. Presented below are the options under consideration:

### **Exempted vessel status for Pacific cod:**

**Option 1: No changes to the exempted status requirements**

**Option 2: Exempt Non-AFA crab vessels from GOA Pacific cod sideboards if the vessel's Bering Sea opilio allocation is less than 0.22% and the vessel landed more than 500 mt of GOA Pacific cod from 1996 to 2000.**

**Sub-Option A: To receive exempted status, vessel/LLP would forfeit their BS opilio crab shares.**

**Sub-Option B: To receive exempted status vessel/LLP would forfeit their BS opilio crab shares that are in excess of the 100,000 pound landing threshold during the qualifying years 1996 to 2000.**

### **Exempted vessel status for pollock:**

**Option 1: No exempted status**

**Option 2: Exempt Non-AFA crab vessels from GOA pollock sideboards if the vessel's Bering Sea opilio allocation is less than 0.22% and the vessel had 1) 5 pollock deliveries 2) 10 pollock deliveries or 3) 20 pollock deliveries from 1996 to 2000.**

Under the Crab Rationalization Program, crab harvest quota was issued to persons holding valid LLP licenses. Given that quota was issued to LLP licenses and not vessels, determining which vessels have less than 0.22 percent of the BS snow crab quota issued is very complex and time consuming. Adding to the difficulty of determining the percent of crab quota issued by vessel is that participants were allowed to drop years during the initial allocation of snow crab and allocations were based on average annual percentage (rather than percent of total) of qualified catch. In addition, in cases where awarded snow crab quota was based on catch from more than one vessel, accurately assigning the crab quota allocation from the license to the originating vessels is further complicated.

To simplify the action and increase the predictability of the effects, the Council may want to utilize an approach similar to the current Pacific cod sideboard exemption regulations. As noted above, the current sideboard exemption is available to the vessels landing less than 100,000 lbs in BS snow crab and more than 500 mt of GOA Pacific cod between 1996 and 2000. Note, that ongoing crab adjudication could continue to change the denominator used to determine a vessel's percent of total qualified snow crab harvest. A simpler approach would be to establish a specific poundage threshold that approximately 0.22 percent of the total qualified snow crab harvest. Based on current information, such a threshold would be 1.2 million pounds. Using a threshold of 1.2 million pounds of qualified snow crab harvested combined

with landings of greater than 500 mt of GOA Pacific cod, yields approximately six new exempt vessels and six new exempt licenses. In order to mirror the crab rationalization regulations, it is assumed that Option 2 would also apply to LLP licenses that were generated on qualified exempt vessels.

Two suboptions were also included under Option 2. The first suboption would require an exempted status vessel/LLP to forfeit their BS snow crab quota shares. The second suboption would require exempted status vessel/LLP to forfeit their BS snow crab quota shares that are excess of 100,000 pound landing threshold during the same qualifying years. The language in the suboption are not clear whether this applies only to the new exempt vessels/LLPs or to all exempt vessels/LLPs to include those currently exempt. Even more problematic, if since implementation of crab rationalization a participant has sold their crab quota, requiring a vessel/LLP to forfeit their quota may not be possible.

Under Suboption A, the new exempt vessels would have to forfeit a combined amount of approximately 0.68 percent of BS snow crab, while under Suboption B, the new exempt vessels would forfeit a combined amount of approximately 0.57 percent. Applying these percents to 2006 BS snow crab TAC, under Option A approximately 248,676 pounds would be forfeited by the new exempt vessels, while under Option B approximately 208,449 pounds would be forfeited by the same group of vessels.

Finally, as noted above, estimates on the number of vessels and licenses that would be exempt from GOA pollock sideboards were not able to be generated in time for the October 2007 Council meeting. It is anticipated this information could be provided in time for the December 2007 Council meeting.

### **Rockfish Pilot Program Sideboards**

The Central Gulf of Alaska Rockfish Pilot Program was implemented on December 20, 2006. The program provides exclusive harvesting and processing privileges for a specific set of rockfish species and for associated species harvested incidentally to those rockfish in the CGOA. Recognizing that development of a rationalization program has the potential to adversely impact other fisheries, the Council established a suite of sideboard limits for participants in the Rockfish Pilot Program. Participants in this program are able to increase their effort in other fisheries because of the redistribution of effort under the rationalization program.

There are a suite of GOA sideboard limits for catcher processors and catcher vessels operating in the Central GOA Rockfish Pilot Program. There are two broad categories of sideboards – those that establish catch limits, and those that prohibit directed fishing. Catch limits are divided into limits on harvests in other GOA rockfish fisheries and limits on the amount of halibut mortality that can be used in GOA flatfish fisheries. The sideboard limits are in effect only during the month of July. The sideboards are designed to restrict fishing during the historical season for the fishery, but allow eligible rockfish harvesters to participate in fisheries before and after the historical rockfish season. Sideboards would apply to State waters in the “parallel” fishery. Table 8 provides a detailed one page summary of the Rockfish Pilot Program sideboard limits for each sector. Management of sideboard limits are similar to other sideboard programs in that once sideboard limits are reached, directed fisheries are closed.

**Table 8. Summary of Rockfish Pilot Program sideboard limits in each sector**

July Catch Limit	CV Sector	C/P Cooperatives	C/P Limited Access	C/P "Opt-out"
Catch limits: Western GOA POP, Pelagic Shelf, and Northern Rockfish	A collective CV limit for each species in each region	Cooperative specific limit for each species in each region	A collective limit for all non-cooperative C/Ps for each species in each region	
West Yakutat POP, Pelagic Shelf, and Northern Rockfish	Fisheries closed due to low sideboard limit			
BSAI Pacific cod	CV Sector limit	N/A	N/A	N/A
Halibut mortality limits: GOA (1) Shallow-water limit, & (2) Deep-water limit	(1) shallow-water flatfish closed in the GOA when limit reached (2) deep-water flatfish closed due to low sideboard limit	(1) shallow-water flatfish closed in GOA when limit reached (2) deep-water flatfish closed due to low sideboard limit	(1) shallow-water flatfish closed in GOA when limit reached (2) deep-water flatfish closed due to low sideboard limit	
Prohibited fishing: BSAI groundfish (except pollock and IFQ sablefish)	July 1 - 31 prohibited directed fishing for most flatfish and rockfish	July 1- July 14	From July 1- until C/Ps harvest 90% of the CGOA POP  (Only for C/Ps with more than 5% of the total C/P POP history)	N/A
GOA groundfish (except pollock and IFQ sablefish)	N/A	N/A ** (Assuming monitoring requirements met)		July 1 - July 14 – unless past activity

*General Sideboard Provisions*

CP and CV sectors have sideboard limits for West Yakutat pelagic shelf rockfish and POP and Western GOA pelagic shelf rockfish, POP, and northern rockfish. The sideboard limits will be based on each sector's historic catch of target species in GOA fisheries during July. The sideboard limit applies both to qualified vessels and to any LLP licenses derived in whole or in part from the history of the qualified vessels. Sideboard restrictions apply even if the LLP license holder did not submit an application to participate in the Rockfish Program, but that LLP license is otherwise eligible to receive rockfish quota shares under the program. Non-exempt AFA vessels are exempt from sideboard limits under the Rockfish Program.

The calculation of GOA rockfish sideboard limits is based on the sector's retained catch as a percentage of total retained catch in a fishery from July 1 to July 31 in each year from 1996 to 2002. There are separate sideboard ratios for each rockfish sideboard fishery and for each sector. Sideboard limits for the CV sector are applied at the sector level. For the CP sector, sideboard limits are applied at the rockfish cooperative level. Each CP rockfish cooperative is assigned a sideboard limit as a percent of the general sideboard ratio for each fishery for the CP sector. The general sideboard ratio for each fishery is presented in Table 9

Similar to other sideboard programs, closures will be timed so that adequate amounts of the species are available for bycatch needs in other directed fisheries. For the month of July in 2007 and 2008, directed fishing for pelagic shelf rockfish and Pacific Ocean perch in the West Yakutat area and these same species plus northern rockfish in the Western GOA area by catcher vessels.

**Table 9. 2007 Rockfish Program harvest limits by sector for West Yakutat and Western GOA**

Management Area	Fishery	C/P sector (% of TAC)	CV sector (% of TAC)	2007 TAC (mt)	2007 C/P limit (mt)	2007 CV limit (mt)
West Yakutat	Pelagic Shelf rockfish	72.4	1.7	307	222	5
	Pacific ocean perch	76	2.9	1,140	866	33
Western GOA	Pelagic Shelf rockfish	63.3	0	1,466	928	0
	Pacific ocean perch	61.1	0	4,244	2,593	0
	Northern rockfish	78.9	0	1,439	1,135	0

Sectors are also limited in their catch by a second sideboard limit that is intended to constrain harvest from fisheries that are typically halibut constrained (Table 10). Sideboard limits are established for the CV and CP sectors separately. Similar to the sideboard limits for rockfish, halibut PSC sideboard limits for the CP sector are also calculated at the cooperative level, and at the sector level of the CV sector. NMFS will administer the sideboard on the deep-water complex and the shallow-water complex.<sup>2</sup> The sideboards are set for Gulf-wide halibut usage, as halibut is currently managed on a Gulf-wide basis. If, in July, eligible vessels have caught the sideboard halibut amount within a complex, they would be precluded from participating in specific halibut sideboarded fisheries in the complex for the remainder of July. For example, once the shallow-water complex sideboard limit is reached for a sector or CP cooperative the flathead sole and shallow water flatfish fisheries would close for that sector or cooperative during the remainder of July. Similarly, once the sideboard limit is reached for deep-water complex, NMFS would close the rex sole, arrowtooth flounder, and deep water flatfish fisheries to fishing for that sector or cooperative for the remainder of July.

Note, since halibut is necessary to support the CGOA rockfish fishery, any halibut mortality in the CGOA rockfish fishery is deducted from the sector allocation of halibut PSC and not the sideboard limit for halibut. In contrast, any halibut mortality from GOA flatfish fisheries in the month of July will be deducted from the sideboard limit for the deep-water complex or the shallow-water complex, depending on the species of flatfish targeted.

**Table 10. 2007 and 2008 Rockfish Program halibut mortality limits by sector**

Sector	Shallow-water complex halibut PSC sideboard ratio	Deep-water complex halibut PSC sideboard ratio	Annual halibut mortality limit (mt)	Annual shallow-water complex halibut PSC sideboard limit (mt)	Annual deep-water complex halibut PSC sideboard limit (mt)
Catcher/Processor	0.54	3.99	2,000	11	80
Catcher vessel	6.32	1.08	2,000	126	22

Each rockfish cooperative in the CP sector will be assigned a percentage of each halibut PSC sideboard limit. The sideboard limit for the cooperatives are based on the aggregate halibut PSC used in the deep-water complex from July 1 through July 31 annually from 1996 to 2002 by all LLP licenses assigned to a

<sup>2</sup> The deep-water complex includes sablefish, rockfish, deepwater flatfish, rex sole, and arrowtooth flounder. The shallow-water complex includes flathead sole, shallow water flatfish, pollock, and Pacific cod.

rockfish cooperative, divided by the GOA annual halibut mortality limit (3.99%). Halibut from the primary rockfish fisheries in the CGOA is excluded from sideboard calculations. For the shallow-water complex sideboard limit, the calculations are the same but halibut mortality for the sector is 0.54%.

### *Sideboard Provisions for Catcher Vessels*

In addition to rockfish and halibut PSC sideboard limits noted above, any qualified CV vessel may not participate in directed fishing in BSAI (and adjacent State waters) during the month of July for Alaska plaice, arrowtooth flounder, flathead sole, other flatfish, POP, rock sole, and yellowfin sole.

### *Sideboard Provisions for Catcher Processors Cooperatives (Updated to include proposed sideboard options)*

In addition to the general sideboard limits noted above, CP vessels that join a cooperative are also prevented from participating in the directed groundfish fisheries in the BSAI and adjacent State waters from July 1 to July 14.<sup>3</sup> All vessels in a rockfish cooperative must maintain an adequate monitoring plan while participating in the CGOA rockfish fishery or any directed sideboard fishery to be exempt from GOA groundfish prohibitions. If cooperative participants fail to maintain a monitoring plan, then cooperative participants would be prohibited from participating in GOA directed groundfish fisheries (IFQ sablefish fishery and CGOA rockfish fisheries) from July 1 through July 14 or until 90% of the cooperative's rockfish quota has been harvested.

In April 2007, the Council proposed an option for analysis that would remove the July 1 to July 14 stand down period for those vessels that participate in the rockfish pilot program (including limited access vessels) and participate in a cooperative in the BSAI fisheries under the Amendment 80 Program. The following is the option under consideration:

**For the CP CGOA rockfish vessels that participate in the CGOA pilot program and also form cooperatives in the BSAI fisheries under Amendment 80, these vessels will be exempted from the July 1 to July 14 stand down period before entering the BSAI fisheries.**

With the impending implementation of Amendment 80 in 2008, the July 1 to July 14 stand down for H&G trawl CP vessels that participate in the rockfish pilot program and Amendment 80 cooperatives may no longer be necessary to prevent encroachment on other BSAI fisheries. The original intent of the July 1 to July 14 stand down was to prevent rockfish participants from encroaching on the BSAI fisheries. Under Amendment 80, H&G trawl CP vessels will be allocated exclusive harvest privileges for BSAI yellowfin sole, rock sole, flathead sole, AI POP, and Atka mackerel. Eligible H&G trawl CP vessels are also authorized to form cooperatives. Although a specific count of vessels that qualify for the exemption cannot be determined at this time,<sup>4</sup> the universe of H&G trawl CP vessels that participate in the rockfish pilot program and are eligible to form BSAI cooperatives under Amendment 80 is approximately 10. Table 11 provides a vessel count and harvest data in the BSAI during the July 1 to July 14 from 2003 to 2006 for these 10 vessels. Vessel counts in the BSAI during the July 1 to July 14 have ranged between 3 in 2006 and 6 in 2005. Harvest data shows that these vessels appear to be focusing their effort on AI POP and BSAI Pacific cod during the July 1 to July 14 period over the last four years.

---

<sup>3</sup> Sideboard limits do not apply to vessels while fishing for IFQ sablefish and pollock.

<sup>4</sup> Amendment 80 is expected to be implemented in January 2008. In addition, vessel numbers could vary over time since cooperative formation under Amendment 80 is voluntary.

**Table 11. July 1 – July 14 BSAI harvest (mt) from H&G trawl CP vessels that participate in rockfish pilot program and are eligible to form Amendment 80 cooperatives in the BSAI**

<b>Species</b>	<b>2003</b>	<b>2004</b>	<b>2005</b>	<b>2006</b>
Atka mackerel	53	20	14	*
Arrowtooth flounder	35	*	29	*
Sablefish	3	*	*	*
Flathead sole	*	*	6	*
Northern rockfish	*			*
Squid and other	*	*	*	*
Pacific cod	182	56	132	*
Pollock	38	33	33	*
POP	816	*	453	*
Rock sole	*	*	6	*
Shortraker/Rougheye	*	*	*	*
Other rockfish	*	*	*	*
Turbot	*	0		*
Yellowfin sole			*	
<b>Total</b>	<b>1,228</b>	<b>989</b>	<b>696</b>	<b>*</b>
<b>Vessel Count</b>	<b>5</b>	<b>5</b>	<b>6</b>	<b>3</b>

\*Concealed for confidentiality.

In general, H&G trawl CP vessels that form cooperatives in the BSAI could not encroach on other BSAI fisheries given the allocations to the H&G trawl CP vessels are hard caps. Under a hard cap management, when the cooperative's allocation of one species is fully harvested, all directed fishing by that cooperative for that species, as well as any directed fisheries in which the species could be caught incidentally, close. Vessels exempt from the two week stand down, that otherwise would be forced to fish in the GOA or lay idle, would be free to select the area that generates the maximum revenue. In some cases this would result in H&G trawl CP vessels selecting the BSAI area.

#### *Sideboard Provisions for Catcher Processors Limited Access*

In addition to the general sideboard provisions noted above, participants that elect to fish in the limited access fishery that have in excess of 5% of the sector's qualified catch of CGOA POP are subject to additional limits from July 1 until 90% of the CGOA POP that is allocated to the limited access fishery for the CP sector has been harvested. During that time period, CPs that are in the limited access may not participate in 1) the CGOA rockfish limited access fishery, and 2) the BSAI groundfish fishery.

#### *Sideboard Provisions for Catcher Processors Opt-Out*

In addition to the general sideboard limits noted above, qualified participants that choose to opt-out of the rockfish pilot program would be prevented from participating in any directed fishery that the license holder did not participate in during the first week of July in at least two of the seven qualifying years. These seven qualifying periods are:

- June 30, 1996 through July 6, 1996
- June 29, 1997 through July 5, 1997
- June 28, 1998 through July 4, 1998
- July 4, 1999 through July 10, 1999
- July 8, 2000 through July 15, 2000
- July 1, 2001 through July 7, 2001, and
- June 30, 2002 through July 6, 2002.

Participation in area 650 during the qualifying period will count toward area 640 qualification. This provision is intended to prevent participants with multiple licenses and substantial history from opting out of the program with one license and entering other fisheries in which the license holder has no history.

### **Amendment 80 Sideboard**

In June 2006, the Council took final action on Amendment 80, which included H&G trawl sideboard limits in the GOA. The Secretary of Commerce approved the action on July 26, 2007 and the final rule was published on September 14, 2007. The action would allow members of the H&G trawl CP sector to form cooperatives in the BSAI, which should allow them to more nearly optimize when and where they fish. Increased flexibility in planning their fishing year is expected to enable participants to alter their historic fishing patterns and improve their efficiency. It also could allow participants to change their fishing patterns to give them a competitive advantage over participants in non-rationalized GOA fisheries. As seen from Figure 3, the preferred alternative in Amendment 80 would establish groundfish sideboards for pollock, Pacific cod, Pacific Ocean perch, northern rockfish, and pelagic shelf rockfish. Sideboard limits would also be established for halibut PSC. Amendment 80 sideboards apply to vessels and LLPs used to generate harvest shares that result in allocation of TACs to the H&G trawl CP sector.

### *GOA Groundfish*

GOA sideboard restrictions would be based on historic usage during the 1998-2004 qualifying period. Specifically, retained catch for non-exempt qualified H&G trawl CP vessels by GOA area as a percentage of total retained catch of all sectors in that area from 1998 to 2004. The sideboards are designed to limit participation in the pollock, Pacific cod, and directed rockfish fisheries (for species not allocated under the Rockfish Demonstration Program). The pollock and Pacific cod sideboards will constrain the harvest of these species by limiting a vessel's incentives to join the inshore component of the GOA fleet. Rockfish sideboard limits are less restrictive, but could provide some protections to the other GOA vessels operating in those rockfish fisheries. GOA groundfish sideboard percentages are provided in Table 12.

Figure 3. Summary diagram of the overall H&G trawl CP GOA sideboard program from Amendment 80

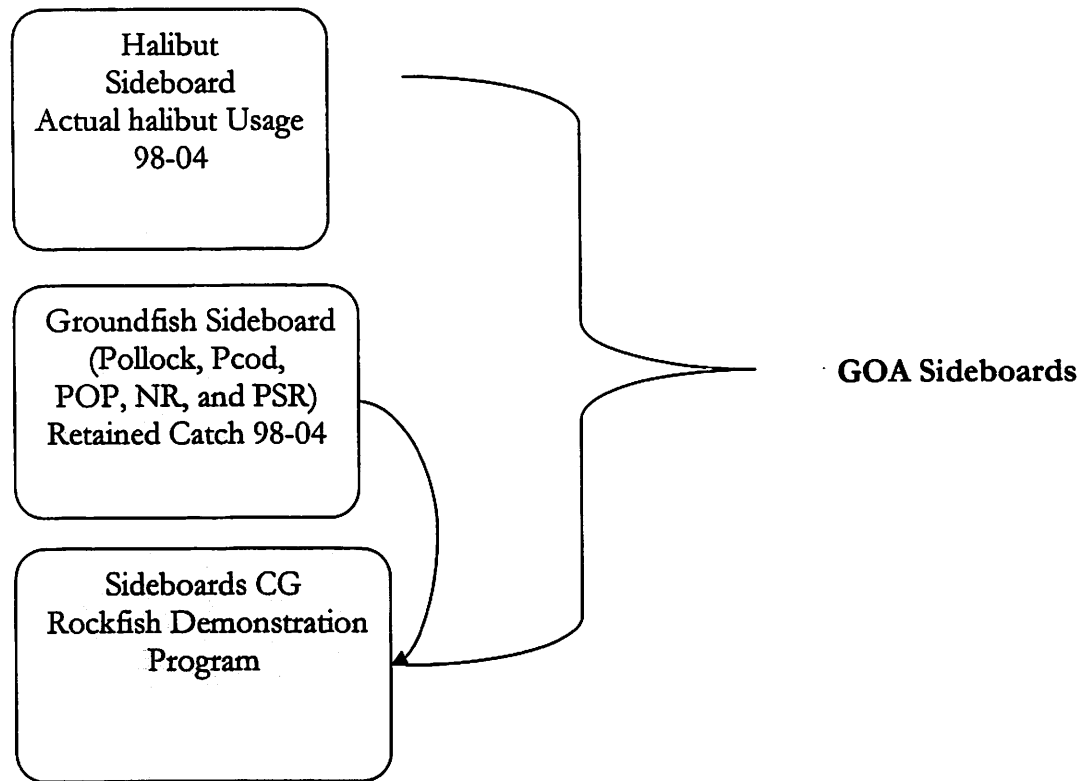


Table 12. Amendment 80 GOA sideboard estimates and average historic catch

Species	Sideboard %		Estimated Sideboard (mt)	Average Catch of H&G trawl CPs (95-03)
	Sideboard %	Estimated Sideboard (mt)		
<b>Pollock</b>				
Pollock 610	0.3%	91	120	
Pollock 620	0.2%	34	100	
Pollock 630	0.2%	19		
Pollock 640	0.2%	4		
<b>Central Gulf</b>				
Pacific Ocean Perch	RDP	RDP	RDP	
Pelagic Shelf Rockfish	RDP	RDP	RDP	
Northern Rockfish	RDP	RDP	RDP	
Pacific Cod	4.4%	1,355	2,024	
<b>Western Gulf</b>				
Pacific Ocean Perch	99.4%	2,549	1,456	
Pelagic Shelf Rockfish	76.4%	288	135	
Northern Rockfish	100.0%	808	443	
Pacific Cod	2.0%	314	553	
<b>West Yakutat</b>				
Pacific Cod	3.4%	*	*	
Pacific Ocean Perch	96.1%	808	784	
Pelagic Shelf Rockfish	89.6%	182	116	

Source: Sideboard percent was estimated using the retained catch of the 28 H&G trawl CP vessels (as estimated in the Council IR/IU and GOA Rationalization data base) divided by the total retained catch of all vessels in the GOA, as reported in the NOAA Fisheries catch and bycatch reports (1995-2003).

RDP - Indicates that species will be managed under the Rockfish Demonstration Program

\*Not report to protect confidential data



*Halibut PSC Sideboards*

As indicated in Figure 4, GOA flatfish fishery participation is limited to vessels that had more than 10 weeks of participation in the GOA flatfish fisheries. Vessels with more than 10 weeks of participation may target GOA flatfish within current TAC and PSC regulations. Vessels that did not fish a sufficient number of weeks would not be allowed to harvest GOA flatfish in a directed fishery in the future. Under the Council's preferred alternative, 13 H&G trawl CP vessels appear to qualify to target flatfish in the GOA.

GOA halibut PSC caps would be set based on historic usage of halibut PSC by the H&G trawl CP sector from 1998 to 2004.

Table 13 shows the percentages of the deep water flatfish complex and shallow water flatfish complex halibut PSC limits, by quarter under the preferred alternative. The halibut PSC sideboard limit for the H&G trawl CP sector would be 555 mt after removing catch data for the F/V Golden Fleece, which would be exempt from GOA halibut sideboards based on language in the preferred alternative; and after accommodating the allocation of halibut PSC from the third season, which is used to support quota allocations under the RDP.

**Table 13. Amendment 80 GOA Trawl Halibut PSC Sideboard estimates (mt)**

Fishery	Season					Grand Total
	1	2	3	4	5***	
GOA Deep water species trawl fishery	25.85 (1.29%)	214.34 (10.72%)	104.18* (5.21%)	n/a**	n/a**	344.37 (17.22%)
GOA Shallow water species trawl fishery	9.68 (0.48%)	37.80 (1.89%)	29.27 (1.46%)	14.78 (0.74%)	119.54 (5.98%)	211.07 (10.55%)
<b>Grand Total</b>	<b>35.53 (1.77%)</b>	<b>252.13 (12.61%)</b>	<b>132.54 (6.67%)</b>	<b>14.78 (0.74%)</b>	<b>119.54 (5.98%)</b>	<b>555.42 (27.77%)</b>

Source: NPFMC summary of NMFS weekly PSC reports

Note: F/V Golden Fleece data has been deducted from the catch data

\* Third season halibut PSC mortality (212.64 mt) is reduced by the allocations made to the CP sector in the RDP (108.46 mt).

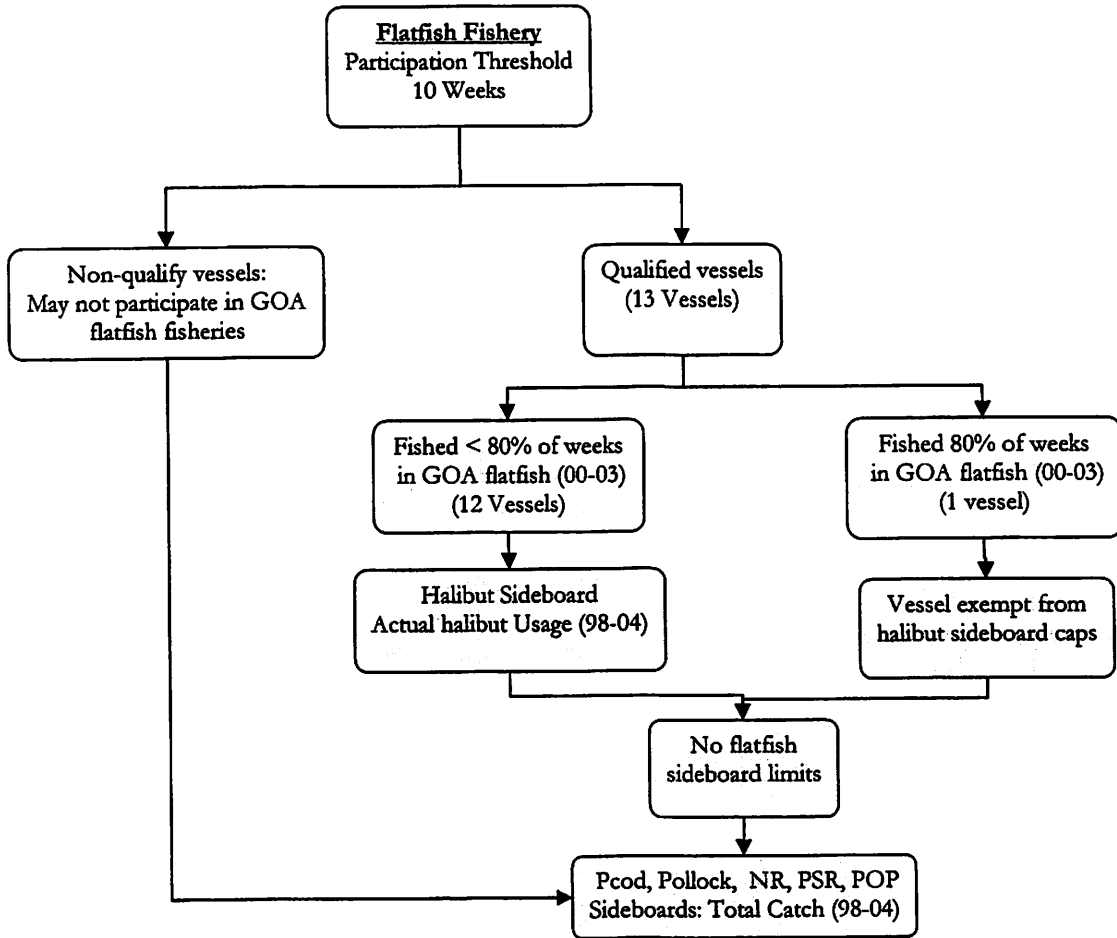
\*\*Fourth season deep water was combined with first season deep water and would rollover if not fully utilized

\*\*\*Deep and Shallow water species have been combined since the season does not species specific apportionment in the past

The Council included an exemption from the GOA halibut sideboards if a vessel had fished 80% of their weeks in the GOA flatfish fisheries from January 1, 2000 through December 31, 2003. The historic catch of exempt vessels will not contribute to the halibut sideboard limit calculations and the future catch of exempt vessels will not count against the halibut sideboard caps. Exempt vessels would be prohibited from directed fishing for all other sideboard species in the GOA (rockfish, Pacific cod, and pollock). Finally, exempt vessels may lease their BSAI Amendment 80 history. Based on the Amendment 80 EA/RIR/IRFA, only the F/V Golden Fleece qualifies to be exempt from GOA halibut sideboards.

Within the H&G trawl CP sector, sideboard limits will be assigned to cooperative and H&G trawl limited access group based on each vessels contribution to the group.

**Figure 4. Diagram of GOA flatfish fishery threshold and GOA sideboard program**



***Summary of all GOA Sideboards (New)***

In April 2007, the Council requested a list of sideboard limits by fishery and area for the different rationalization programs. Presented in Table 14 and Table 15 are all of the sideboard percents and 2007 sideboard amounts for each of the rationalization programs by fishery and area. In addition, a summary of the GOA sideboards is presented for quick reference.

Table 14. GOA sideboard percents by species and area for different rationalization programs

Species	Apportions and allocations by area/processor/gear	AFA CV Sideboard %	Non-AFA Crab Sideboard %	Amendment 80 sideboard %	Rockfish Pilot CP Sideboard % (July Only)	Rockfish Pilot CV Sideboard % (July Only)
Pollock	<b>A Season (W/C areas only)</b>					
	<b>January 20 - March 10</b>					
	Shumagin (610)	0.6112	0.0098	0.003		
	Chirikof (620)	0.1427	0.0031	0.002		
	Kodiak (630)	0.2438	0.0002	0.002		
	<b>B Season (W/C areas only)</b>					
	<b>March 10 - May 31</b>					
	Shumagin (610)	0.6112	0.0098	0.003		
	Chirikof (620)	0.1427	0.0031	0.002		
	Kodiak (630)	0.2438	0.0002	0.002		
	<b>C Season (W/C areas only)</b>					
	<b>August 25 - October 1</b>					
	Shumagin (610)	0.6112	0.0098	0.003		
	Chirikof (620)	0.1427	0.0031	0.002		
	Kodiak (630)	0.2438	0.0002	0.002		
	<b>D Season (W/C areas only)</b>					
	<b>October 1 - November 1</b>					
Shumagin (610)	0.6112	0.0098	0.003			
Chirikof (620)	0.1427	0.0031	0.002			
Kodiak (630)	0.2438	0.0002	0.002			
<b>Annual</b>						
WYK (640)	0.3499	0	0.002			
SEO (650)	0.3499	0				
Pacific cod	<b>A Season</b>					
	<b>January 1 - June 10</b>					
	W inshore	0.1423	0.0902	0.02		
	W offshore	0.1026	0.2046	0.02		
	C inshore	0.0722	0.0383	0.044		
	C offshore	0.0721	0.2074	0.044		
	<b>B Season</b>					
	<b>September 1 - December 31</b>					
	W inshore	0.1423	0.0902	0.02		
	W offshore	0.1026	0.2046	0.02		
	C inshore	0.0722	0.0383	0.044		
	C offshore	0.0721	0.2074	0.044		
	<b>Annual</b>					
E inshore	0.0079	0.011	0.034			
E offshore	0.0078	0	0.034			
WYK (640)						
Flatfish deep-water	W	0	0.0035			
	C	0.067	0			
	E	0.0171	0			
Rex sole	W	0.001	0			
	C	0.0402	0			
	E	0.0153	0			
Flathead sole	W	0.0036	0.0002			
	C	0.0261	0.0004			
	E	0.0048	0			

Species	Apportions and allocations by area/processor/gear	AFA CV Sideboard %	Non-AFA Crab Sideboard %	Amendment 80 sideboard %	Rockfish Pilot CP Sideboard % (July Only)	Rockfish Pilot CV Sideboard % (July Only)
Flathead shallow-water	W	0.0156	0.0059			
	C	0.0598	0.0001			
	E	0.0126	0			
Arrowtooth flounder	W	0.0021	0.0004			
	C	0.0309	0.0001			
	E	0.002	0			
Sablefish	W	0	0			
	C	0.072	0			
	E	0.0488	0			
Pacific ocean perch	W	0.0623	0	0.994	0.611	0
	C	0.0866	0	RPP		
	E	0.0466	0			
	WYK (640)				0.76	0.029
Shortraker rockfish	W	0	0.0013			
	C	0.0237	0.0012			
	E	0.0124	0.0009			
Rougheye rockfish	W	0	0.0067			
	C	0.0237	0.0047			
	E	0.0124	0.0008			
Other rockfish	W	0.0034	0.0035			
	C	0.2065	0.0033			
	E	0	0			
Northern rockfish	W	0.0003	0.0005	1	0.789	0
	C	0.0336	0	RPP		
Pelagic shelf rockfish	W	0.0001	0.0017	0.764	0.633	0
	C	0	0	RPP		
	E	0.0067	0			
	WYK (640)				0.724	0.017
Thornyhead rockfish	W	0.0308	0.0047			
	C	0.0308	0.0066			
	E	0.0308	0.0045			
Big skate	W	0.009	0.0392			
	C	0.009	0.0159			
	E	0.009	0			
Longnose skate	W	0.009	0.0392			
	C	0.009	0.0159			
	E	0.009	0			
Other skates	GW	0.009	0.0176			
DSR	SEO	0.002	0			
Atka mackerel	GW		0			
Other species	GW		0.0176			

RPP - Indicates that species will managed under the Rockfish Pilot Program

Table 15. 2007 GOA sideboard limits by fishery and area for the different rationalization programs

Species	Apportions and allocations by area/processor/gear	Proposed 2007 TAC	Non-AFA CV sideboard limit	Non-AFA crab vessel sideboard limit	Amendment 80 sideboard limit	Rockfish Pilot CP Sideboard limit (July Only)	Rockfish Pilot CV Sideboard limit (July Only)
Pollock	<b>A Season (W/C areas only)</b>						
	<b>January 20 - March 10</b>						
	Shumagin (610)	4,511	2,757	44	14		
	Chirikof (620)	7,357	1,050	23	15		
	Kodiak (630)	3,320	809	1	7		
	<b>B Season (W/C areas only)</b>						
	<b>March 10 - May 31</b>						
	Shumagin (610)	4,511	2,757	44	14		
	Chirikof (620)	8,924	1,273	28	18		
	Kodiak (630)	1,753	427	0	4		
	<b>C Season (W/C areas only)</b>						
	<b>August 25 - October 1</b>						
	Shumagin (610)	7,995	4,887	78	24		
	Chirikof (620)	2,304	329	7	5		
	Kodiak (630)	4,889	1,192	1	10		
	<b>D Season (W/C areas only)</b>						
	<b>October 1 - November 1</b>						
	Shumagin (610)	7,995	4,887	78	24		
	Chirikof (620)	2,304	329	7	5		
	Kodiak (630)	4,889	1,192	1	10		
<b>Annual</b>							
WYK (640)	1,398	489	0	3			
SEO (650)	6,157	2,154	0				
Pacific cod	<b>A Season</b>						
	<b>January 1 - June 10</b>						
	W inshore	10,876	1,548	981	218		
	W offshore	1,208	124	247	24		
	C inshore	15,339	1,107	587	675		
	C offshore	1,704	123	353	75		
	<b>B Season</b>						
	<b>September 1 - December 31</b>						
	W inshore	7,251	1,032	654	145		
	W offshore	806	83	165	16		
	C inshore	10,226	738	392	450		
	C offshore	1,136	82	236	50		
	<b>Annual</b>						
	E inshore	3,346	26	37	114		
E offshore	372	3	0	13			
		0	0				
Flatfish deep-water	W	420	0	1			
	C	4,163	279	0			
	E	4,124	71	0			
Rex sole	W	1,147	1	0			
	C	5,446	219	0			
	E	2,507	38	0			
Flathead sole	W	2,000	7	0			
	C	5,000	131	2			
	E	2,148	10	0			

Species	Apportions and allocations by area/processor/gear	Proposed 2007 TAC	Non-AFA CV sideboard limit	Non-AFA crab vessel sideboard limit	Amendment 80 sideboard limit	Rockfish Pilot CP Sideboard limit (July Only)	Rockfish Pilot CV Sideboard limit (July Only)
Flathead shallow-water	W	4,500	70	27			
	C	13,000	777	1			
	E	2,472	31	0			
Arrowtooth flounder	W	8,000	17	3			
	C	30,000	927	3			
	E	5,000	10	0			
Sablefish	W	494	0	0			
	C	1,238	89	0			
	E	283	14	0			
Pacific ocean perch	W	4,244	264	0	4,219	2,593	0
	C	7,612	659	0			
	E	2,780	130	0			
	WYK (640)	1,140				866	33
Shortraker rockfish	W	153	0	0			
	C	353	8	0			
	E	337	4	0			
Rougheye rockfish	W	136	0	1			
	C	611	14	3			
	E	241	3	0			
Other rockfish	W	577	2	2			
	C	386	80	1			
	E	519	0	0			
Northern rockfish	W	1,439	0	1	1,439	1,135	0
	C	3,499	118	0			
Delagic shelf rockfish	W	1,466	0	2	1,120	928	0
	C	3,325	0	0			
	E	751	5	0			
	WYK (640)	307				222	5
Thornyhead rockfish	W	513	16	2			
	C	989	30	7			
	E	707	22	3			
Big skate	W	695	6	27			
	C	2,250	20	36			
	E	599	5	0			
Longnose skate	W	65	1	3			
	C	1,969	18	31			
	E	861	8	0			
Other skates	GW	1,617	15	28			
DSR	SEO	410	1	0			
Atka mackerel	GW	1,500		0			
Other species	GW	4,500		79			

## GOA Sideboard Quick Reference

### AFA Sideboards (Oct 1998)

AFA CP – not authorized to harvest GOA groundfish, so no GOA sideboards  
AFA CV

- Exempt vessels less than 125' LOA landed less than 1,700 mt of BSAI pollock on average 95-97 and greater than 40 GOA groundfish landings 95-97. Catch history of exempt vessels not counted in sideboard calculations and vessels may continue to fish if sideboard fishery is closed and GOA directed fishery is open
- Exempt vessels may not lease their BSAI pollock when vessel exceeds historic 95-97 GOA harvest level
- GOA sideboard limit is equal to sector's ratio of aggregate retained catch for each groundfish species or species group 95-97 divided by sum of the TACs for that species or species group.
- NMFS sets a single sector sideboard limit for each groundfish species
- Cooperative then divided sideboard limit.
- Halibut PSC sideboard limit equal to total retained catch by non-exempt AFA CVs in each PSC target category 95-97 divided by the total retained catch of all vessels in that fishery 95-97.

### Stand Downs

Trawl CVs in both BSAI and GOA

- Trawl CV operating in BSAI while pollock and Pacific cod are open for directed fishing must stand down using trawl for 3 days in the Western and Central GOA after date of transferring catch. Exception is offshore Pacific cod in GOA
- Trawl CV operating in Western GOA while pollock or inshore Pacific cod fisheries are open must stand down for 3 days before fishing in the BSAI with trawl gear from the date of transfer of Western GOA catch.
- Vessels operating in the CGOA while pollock or inshore Pacific cod are open must stand down for 2 days before fishing in the BSAI with trawl gear from the date of transfer of CGOA catch.

### Crab Rationalization (March 2005)

- GOA Groundfish sideboard limits (except Pacific cod & fixed gear sablefish) based on any non-AFA vessel which made a BSAI snow crab landing 96-00 and any vessel named on an LLP license that was generated in whole or part by fishing history of a qualified vessel.
- GOA groundfish sideboard limit calculation is based on GOA groundfish landings by qualified vessels relative to groundfish landing by all vessels 96-00.
- Pacific cod sideboard limit is based on retained catch of Pacific cod by qualified vessels (excluding BSAI snow crab qualified vessels prohibited from the GOA Pacific cod fishery and GOA Pacific cod sideboard exempt vessels) divided by total retained catch of Pacific cod by all vessels.
- Participation in GOA Pacific cod fishery is restricted to Bering Sea snow crab quota qualified that made more than 50 mt of groundfish harvest in the GOA 96-00. Restriction also applied to any vessel name on an LLP that generated Bering Sea snow crab fishery quota share.
- Exemption from GOA Pacific cod sideboards for vessels that landed less than 100,000 lbs of BS snow crab and more than 500 mt of GOA Pacific cod 96-00.
- In 2006 and 2007, only Western and Central GOA Pacific cod was open
  - 227 crab vessels that made BS snow crab landings 96 -00
  - 137 crab vessels prohibited from fishing for GOA Pacific cod
  - 85 crab vessels are allowed to target GOA Pacific cod
  - 5 crab vessels are exempt from GOA Pacific cod sideboard limits
  - 57 groundfish LLP licenses that originated on qualified crab vessels
  - 12 licenses prohibit the vessel using it from directed fishing in GOA Pacific cod
  - 35 licenses limit the vessel using the LLP to the GOA Pacific cod sideboard limit
  - 5 licenses exempt the vessel using the license from GOA Pacific cod sideboards
- The most restrict, whether license or vessel, rules

### Rockfish Pilot Program

- Sideboard limits for West Yakutat pelagic shelf rockfish (72.4% for CP/1.7% for CV) and POP (76% for CP/2.9% for CV) and Western GOA pelagic shelf rockfish (63.3% for CP/0% for CV), POP (61.1% for CP/0 for CV), and Northern rockfish (78.9% for CP/0 for CV)
- Calculation for sideboard limit is sector's retained catch divided by total retained catch in a fishery from July 1 to July 31 in each year from 96-02
- Separate sideboards for each sector and rockfish fishery
- CP sector sideboard limit applied at the cooperative level

- **Halibut PSC sideboard** (for fisheries other than July rockfish) will be administer Gulf-wide for **deep-water complex** (3.99% for CP/1.08% for CV) and **shallow-water complex** (0.54% for CP/6.32% for CV)
  - **Deep-water complex** includes sablefish, rockfish, deepwater flats, rex sole, and arrowtooth
  - **Shallow-water complex** includes flathead sole, shallow water flats, pollock and Pacific cod
- If vessels caught halibut sideboard limit within a complex, precluded from fishing for **specific halibut sideboarded fisheries**
  - Shallow-water complex – flathead sole and shallow water flats would close
  - Deep-water complex – rex sole, arrowtooth, and deep water flats
- Any halibut mortality in CGOA rockfish fishery is deducted from halibut PSC allocated to sector for fishery not halibut sideboard limit
- Each sideboard will be assigned a percent of each halibut PSC sideboard limit
  - Aggregate halibut PSC used in deep-water complex July 1 – July 31 annually from 96-02 by all LLP licenses assigned to the cooperative divided by the GOA annual halibut mortality limit (3.99%)
  - For shallow-water complex same as above except the denominator is 0.54%
- **Additional Sideboard limits**
  - CV – may not participate in directed fishing in BSAI during July for Alaska plaice, arrowtooth, flathead sole, other flatfish, POP, rock sole, and yellowfin sole.
  - CP Cooperatives – prevented from participating in directed groundfish fisheries in BSAI from July 1- July 14 (except IFQ sablefish and pollock). Any cooperative participate failing to maintain a monitoring plan, then cooperative participants would be prohibited from participating in GOA groundfish fisheries (except sablefish IFQ and CGOA rockfish fisheries) from July 1 – July 14 or until 90% of coop rockfish quota has been harvested
  - CP Limited Access – participants in excess of 5% of the sector’s qualified catch of CGOA POP may not participate in CGOA rockfish limited access fishery and BSAI groundfish fishery from July 1 until 90% of the CGOA POP allocated to limited access fishery for the CP sector has been harvested
  - CP Opt –Out – Prevented from participating in any directed fishery that license holder did not participate in during the first week of July in at least two of the seven qualifying years 96-02. Participation in area 650 will count toward area 640 qualification.

**Amendment 80**

- **GOA Groundfish sideboard limit** based on retained catch for H&G trawl CP sector by GOA (minus catch data from Golden Fleece which is prevented from fishing for these groundfish species) area divided by total retained catch of all sectors in that area 98-04
  - Limit pollock, Pacific cod, directed rockfish fisheries (for species not allocated under the Rockfish Program)
- **Halibut PSC sideboard limit** based on historic usage of halibut PSC by the H&G trawl CP sector 98-04
  - Halibut PSC sideboard limit by deep-water complex and shallow-water complex
  - Halibut PSC sideboard limit estimated to be 555 mt (after removing data from Golden Fleece and accommodating reallocation of halibut PSC from the third season which is used to support quota allocations to the CP sector under the Rockfish Pilot Program)
- **GOA flatfish fishery is limited** to vessels that had more than 10 weeks of participation in the GOA flatfish fishery 98-03
  - 13 H&G trawl CP vessel qualify to target GOA flatfish
- As noted above, the **Golden Fleece is exempt from GOA halibut sideboards** because the vessel had fished more than 80% of its weeks in the GOA flatfish fisheries from 2000 to 2003. The Golden Fleece is prevented from fishing for GOA rockfish, Pacific cod, and pollock.
- Sideboard limits will be assigned to cooperatives and sector limited access based on contribution to each group

Sideboard restrictions apply to State of Alaska parallel groundfish fisheries