

INTERNATIONAL PACIFIC



HALIBUT COMMISSION

# Outcomes of the 98<sup>th</sup> Session of the IPHC Annual Meeting (AM098)

NPFMC meeting  
Agenda item B7  
7 February 2022

INTERNATIONAL PACIFIC



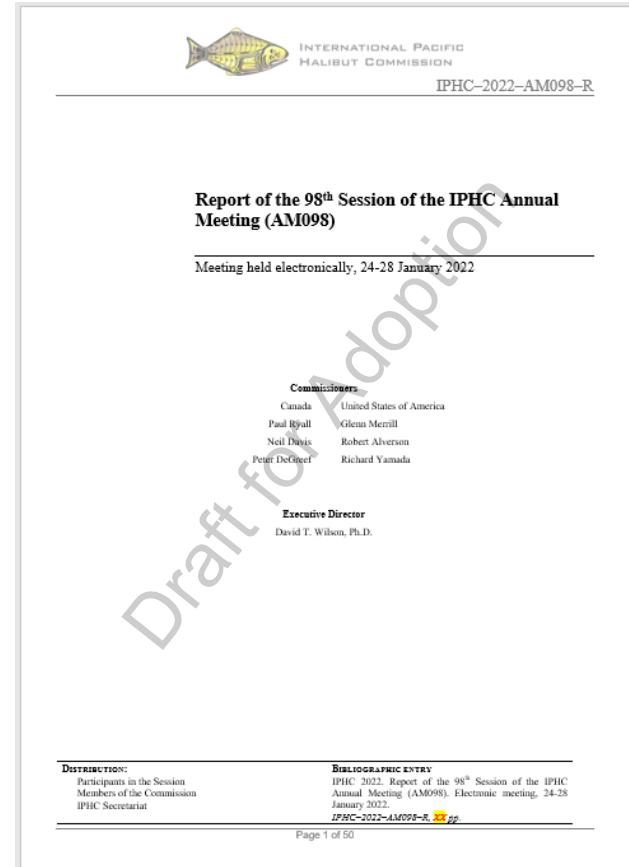
HALIBUT COMMISSION

**RESEARCH**

# 98<sup>th</sup> Session of the IPHC Annual Meeting (AM098)

- 24 - 28 January 2022
- Held electronically (**199** participants)
- Open to public
- AM098 webpage:

<https://www.iphc.int/venues/details/98th-session-of-the-iphc-annual-meeting-am098>



# Mortality limits adopted for 2022

IPHC Regulatory Area	Million Pounds	Tonnes
<b>Canada Total: 2B</b>	<b>7.56</b>	<b>3,429</b>
USA: 2A	1.65	748
USA: 2C	5.91	2,681
USA: 3A	14.55	6,600
USA: 3B	3.90	1,769
USA: 4A	2.10	953
USA: 4B	1.45	658
USA: 4CDE	4.10	1,860
<b>USA: Total</b>	<b>33.66</b>	<b>15,268</b>
<b>Total: IPHC Convention Area</b>	<b>41.22</b>	<b>18,697</b>



# Mortality limits for 2021 to 2022

Contracting Party IPHC Regulatory Area	2021 TCEY (Mlbs)	2022 TCEY (Mlbs)	Change
<b><u>Canada</u> Total: 2B</b>	<b>7.00</b>	<b>7.56</b>	<b>8%</b>
USA: 2A	1.65	1.65	0
USA: 2C	5.80	5.91	1.9%
USA: 3A	14.00	14.55	3.9%
USA: 3B	3.12	3.90	25.0%
USA: 4A	2.05	2.10	2.4%
USA: 4B	1.40	1.45	3.6%
USA: 4CDE	3.98	4.10	3.0%
<b><u>United States of America</u> Total</b>	<b>32.00</b>	<b>33.66</b>	<b>5.2%</b>
<b>Total (IPHC Convention Area)</b>	<b>39.00</b>	<b>41.22</b>	<b>5.7%</b>



# 2022 Mortality limits: detailed projections

	2A	2B	2C	3A	3B	4A	4B	4CDE	Total
Commercial discards	0.07	0.21	NA	NA	0.19	0.07	0.05	0.04	0.62
O26 Non-directed discards	0.09	0.21	0.07	0.72	0.35	0.24	0.12	1.96	3.76
Recreational	NA	0.03	1.09	1.58	0.01	0.01	0.00	0.00	2.71
Subsistence	NA	0.41	0.29	0.18	0.01	0.01	0.00	0.04	0.94
Total non-FCEY	0.16	0.85	1.45	2.48	0.55	0.34	0.17	2.04	8.03
Commercial discards	NA	NA	0.14	0.41	NA	NA	NA	NA	0.54
Recreational	0.60	1.01	0.82	2.11	NA	NA	NA	NA	4.54
Subsistence	0.03	NA	NA	NA	NA	NA	NA	NA	0.03
Commercial landings	0.86	5.70	3.51	9.55	3.35	1.76	1.28	2.06	28.08
Total FCEY	1.49	6.71	4.46	12.07	3.35	1.76	1.28	2.06	33.19
							<i>4C FCEY</i>	<i>0.92</i>	
							<i>4D FCEY</i>	<i>0.92</i>	
							<i>4E FCEY</i>	<i>0.22</i>	
TCEY	1.65	7.56	5.91	14.55	3.90	2.10	1.45	4.10	41.22
U26 Non-directed discards	0.00	0.03	0.00	0.29	0.07	0.08	0.01	0.74	1.23
Total	1.65	7.59	5.91	14.84	3.97	2.18	1.46	4.84	42.45

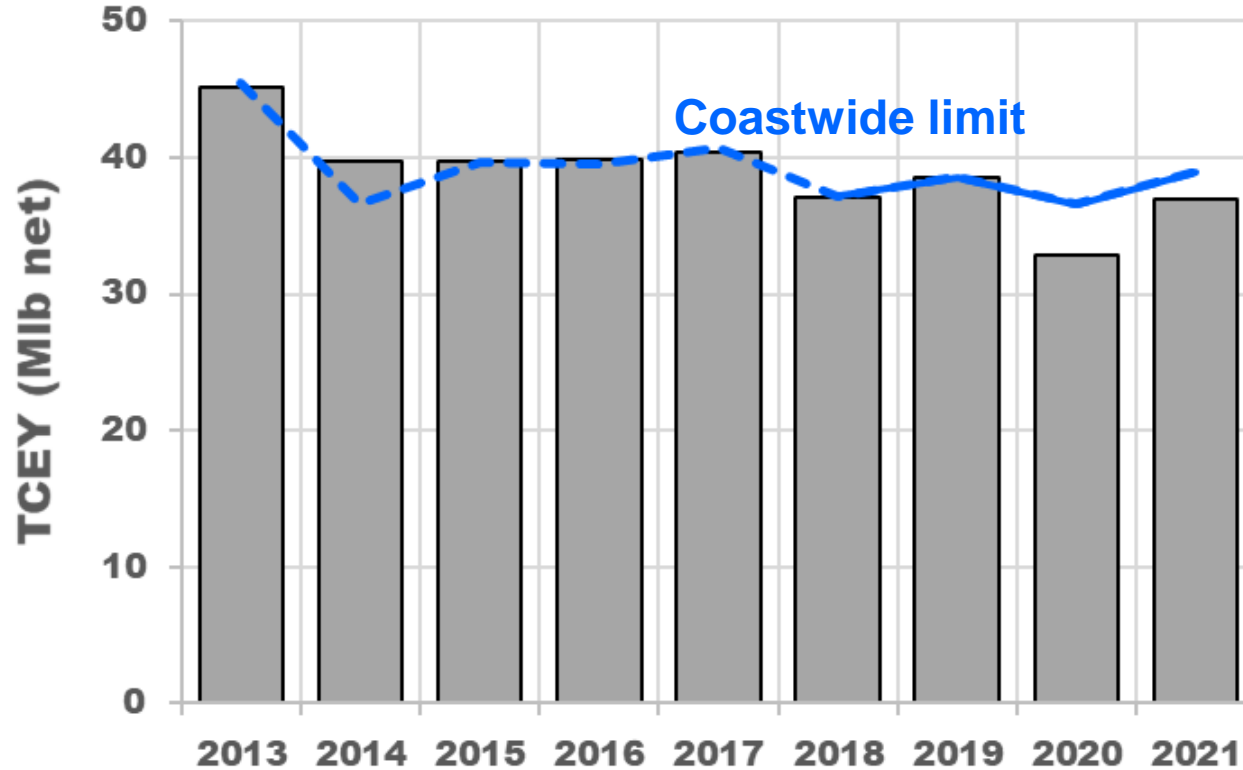


# Stock assessment summary

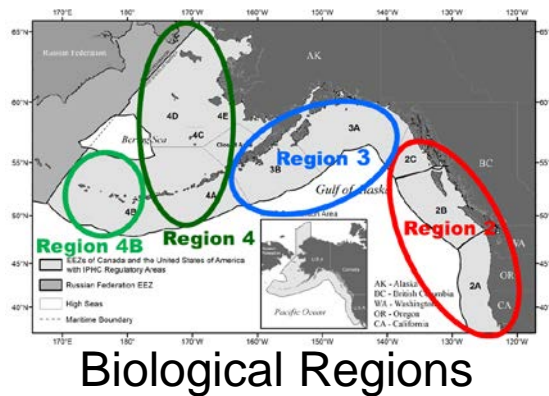
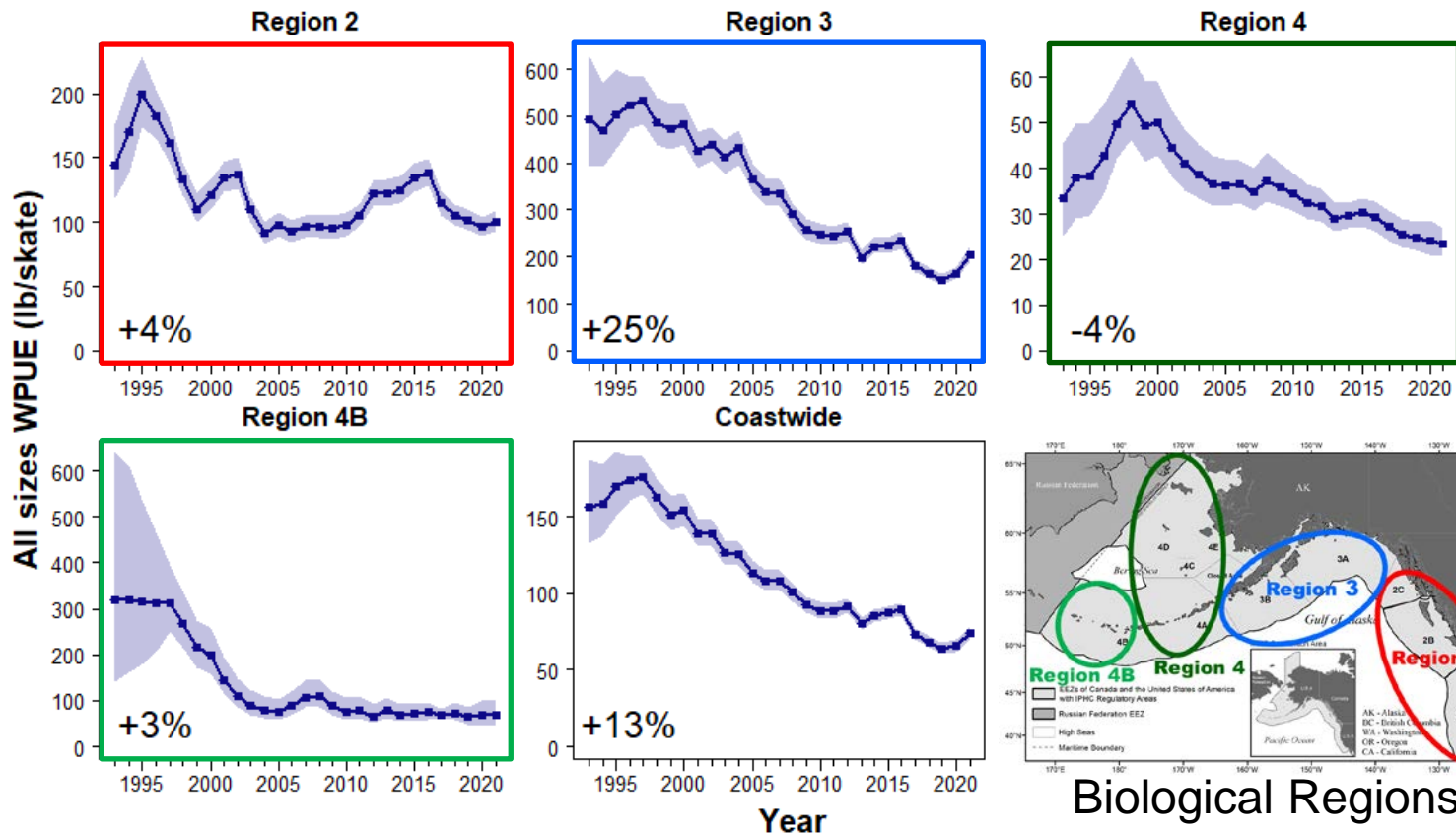
- Indices were up in 2021 with younger fish from the 2012 year-class increasingly important
- Stock distribution is trending back toward Biological Region 3
- Spawning biomass trend is nearly flat with little projected change at  $F_{43\%}$
- Projections rely on the 2012 year-class maturing over the next ~3 years, but the scale and biology of this cohort remain uncertain



# Recent mortality vs. limits



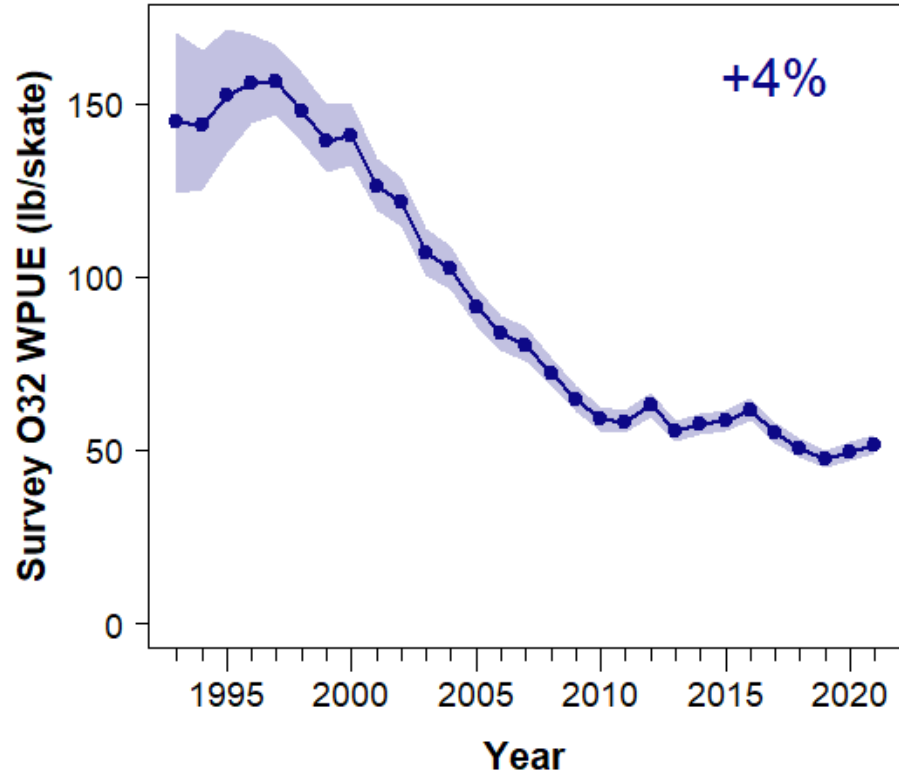
# Modelled survey trends (all sizes WPUE)



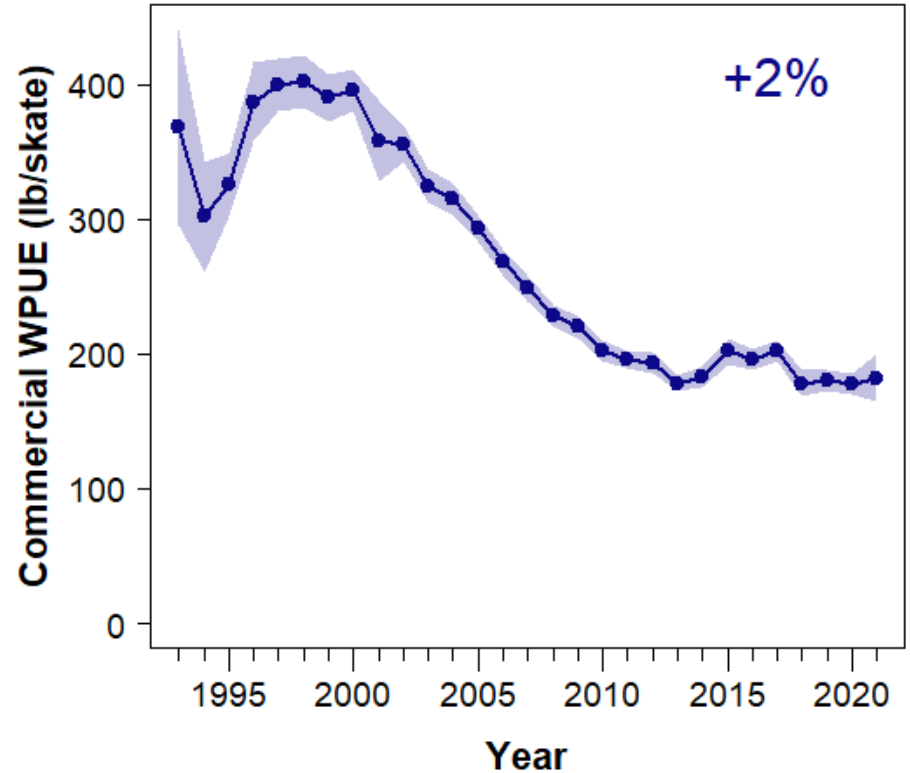


# O32 WPUE (lb/skate) trends (1993+)

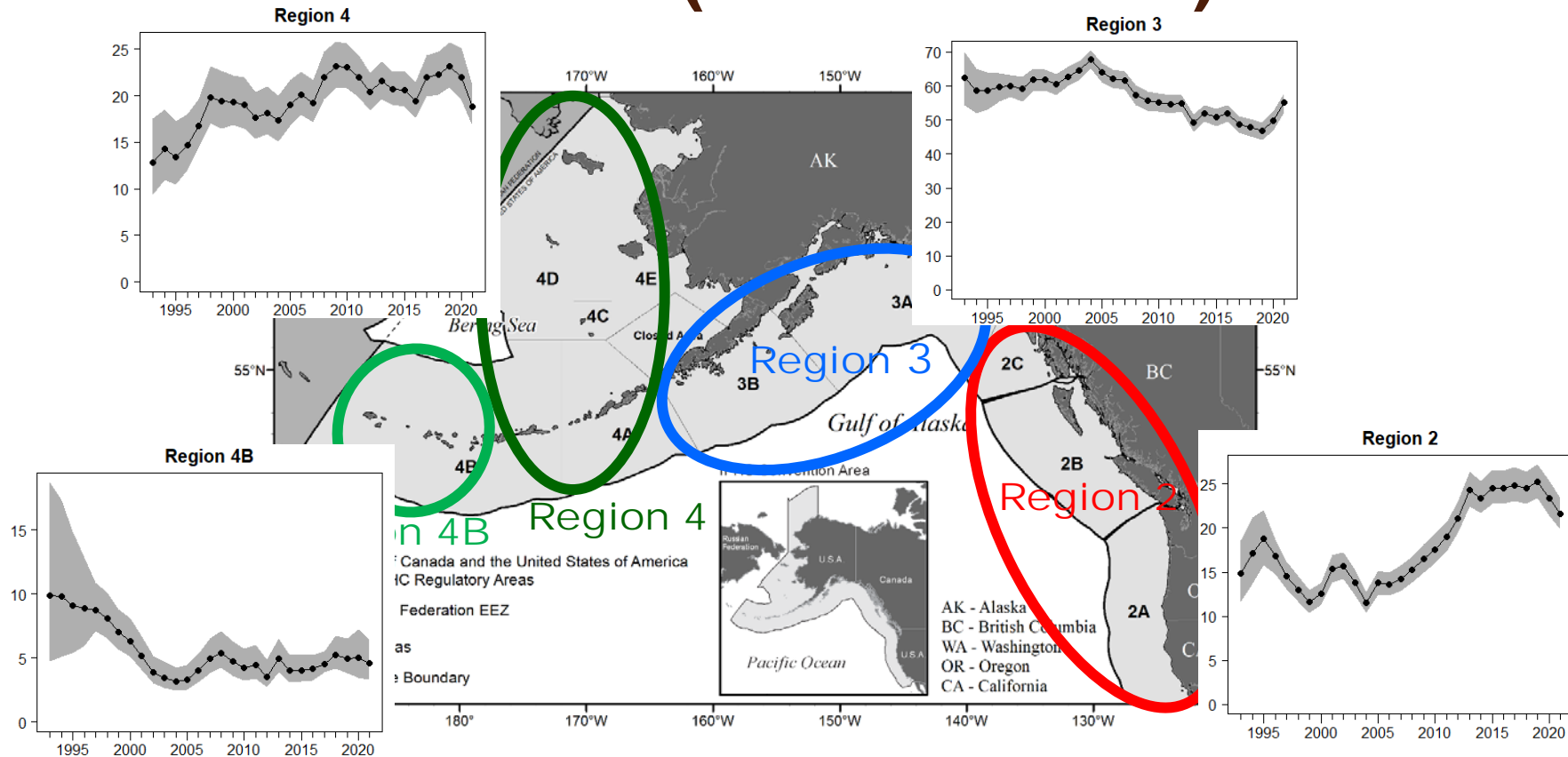
## Coastwide survey



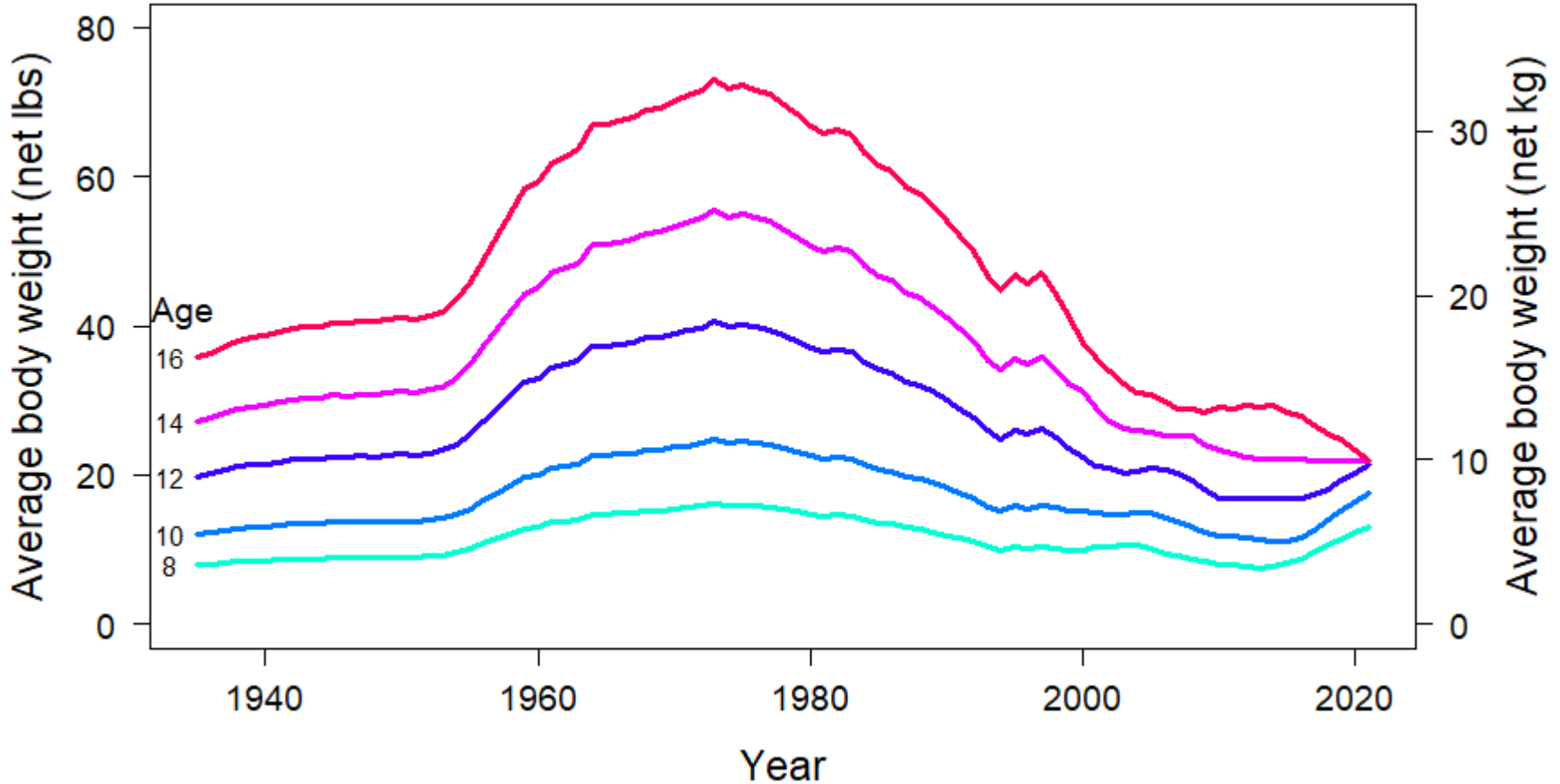
## Coastwide commercial



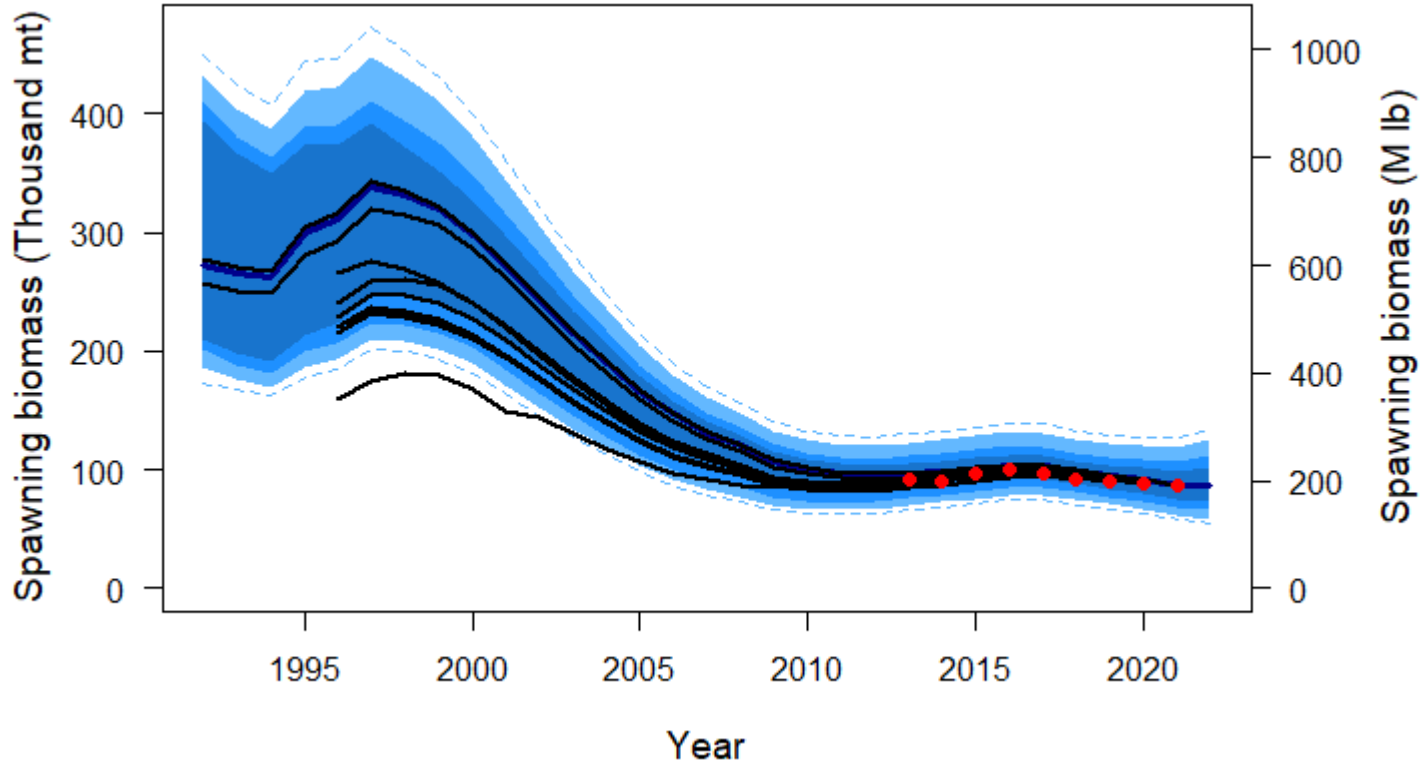
# Stock distribution (% of biomass)



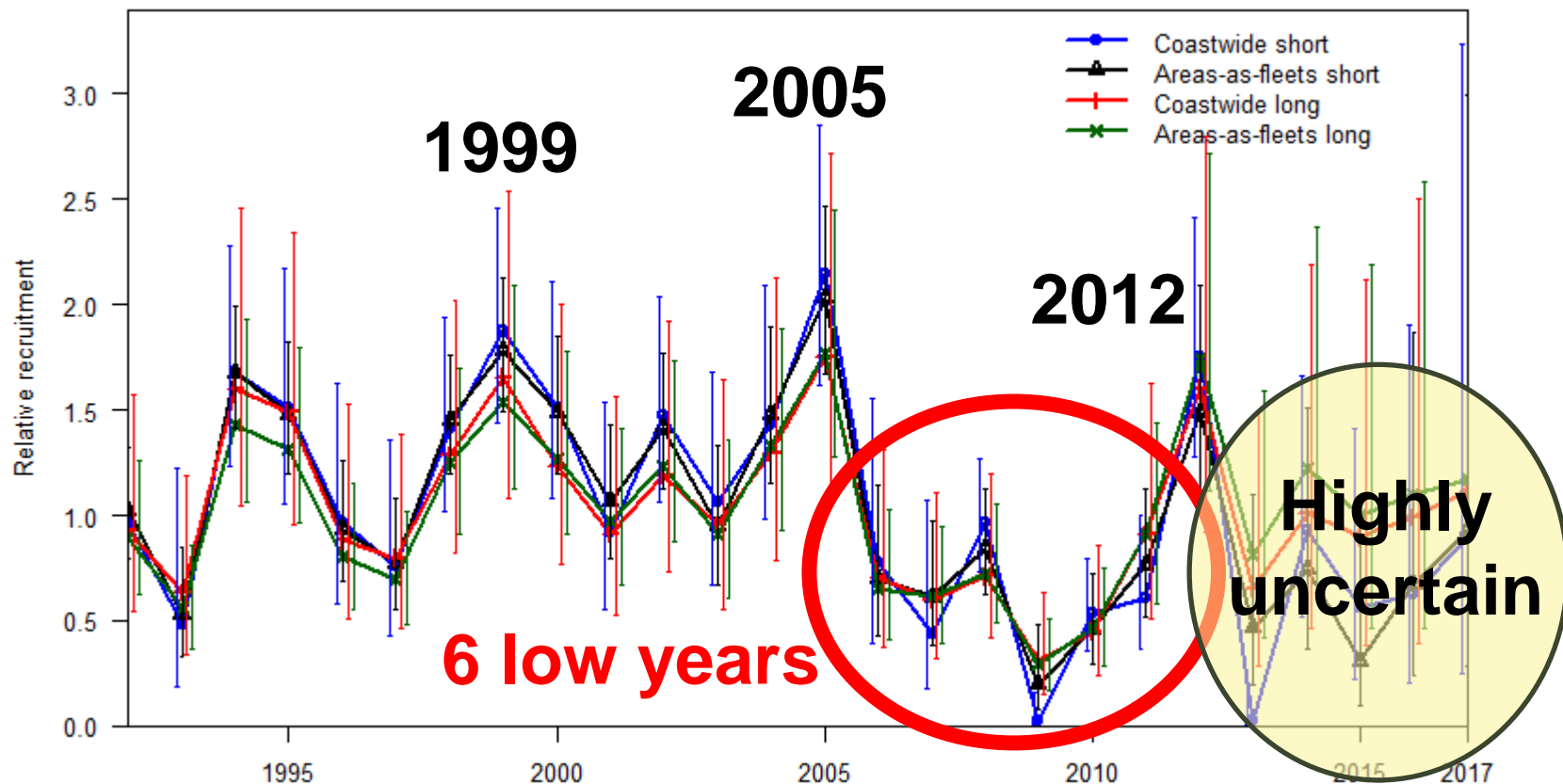
# Historical coastwide female weight-at-age



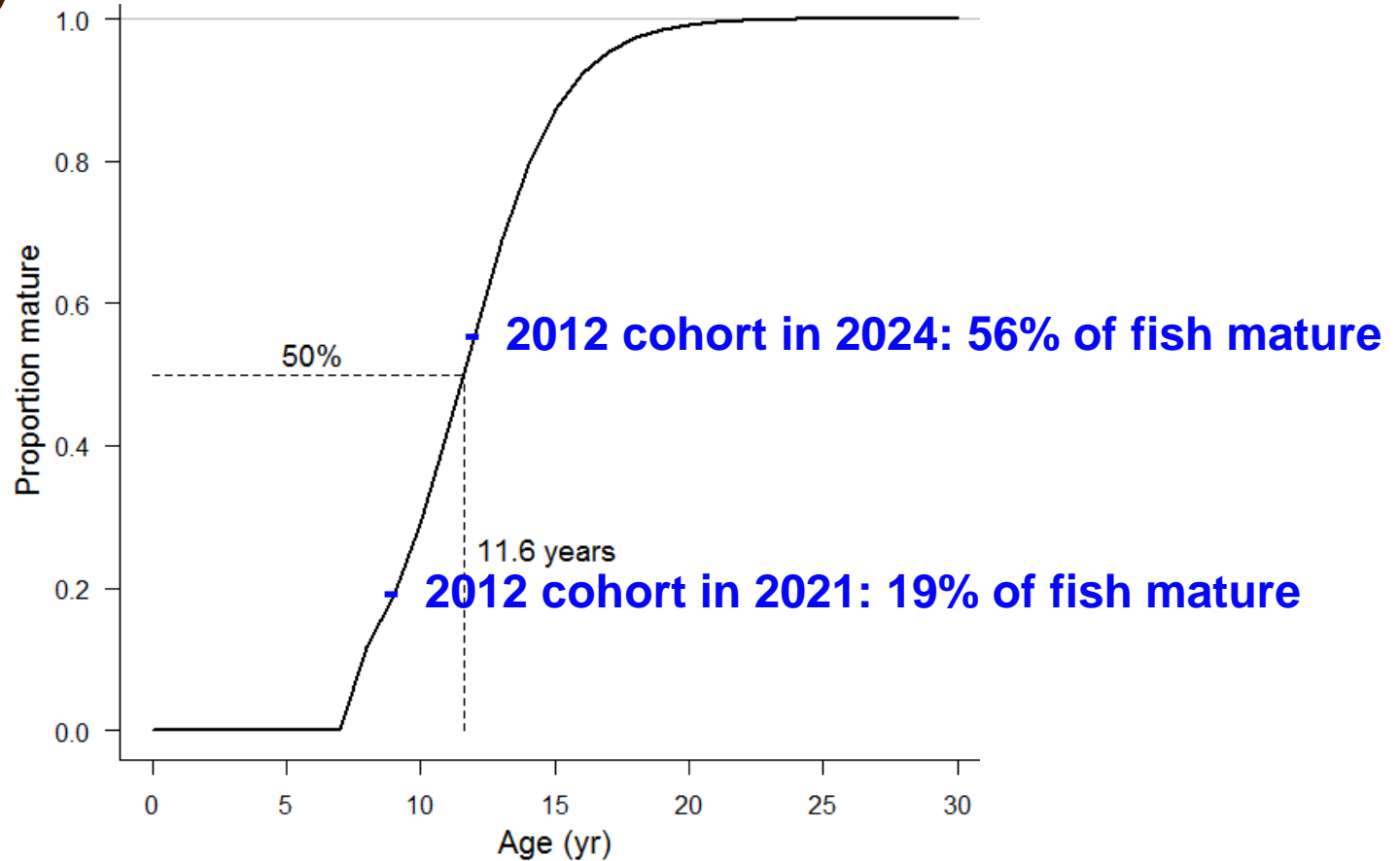
# Comparison with previous assessments



# Relative recruitment estimates



# Maturity



# Assessment summary table

Indicators	Values	Trends	Status
<b>BIOLOGICAL</b>			
SPR <sub>2021</sub> : P(SPR<43%): P(SPR<limit):	46% (35-63%) 47% <b>LIMIT NOT SPECIFIED</b>	FISHING INTENSITY INCREASED FROM 2020 TO 2021	FISHING INTENSITY BELOW REFERENCE LEVEL
SB <sub>2022</sub> (Mlb): SB <sub>2022</sub> /SB <sub>0</sub> : P(SB <sub>2022</sub> <SB <sub>30</sub> ): P(SB <sub>2022</sub> <SB <sub>20</sub> ):	191 (129–277) MLBS 33% (22-54%) 45% <1%	SB <b>DECREASED</b> 17% FROM 2016 TO 2022	NOT OVERFISHED
Biological stock distribution:	SEE TABLES AND FIGURES	REGION 3 INCREASING	WITHIN HISTORICAL RANGES
<b>FISHERY CONTEXT</b>			
Total mortality 2021: Percent retained 2021: Average mortality 2017-21:	37.66 MLBS, 17,084 T 88% 38.48 MLBS, 17,456 T	MORTALITY INCREASED FROM 2020 TO 2021	2021 MORTALITY NEAR 100-YEAR LOW



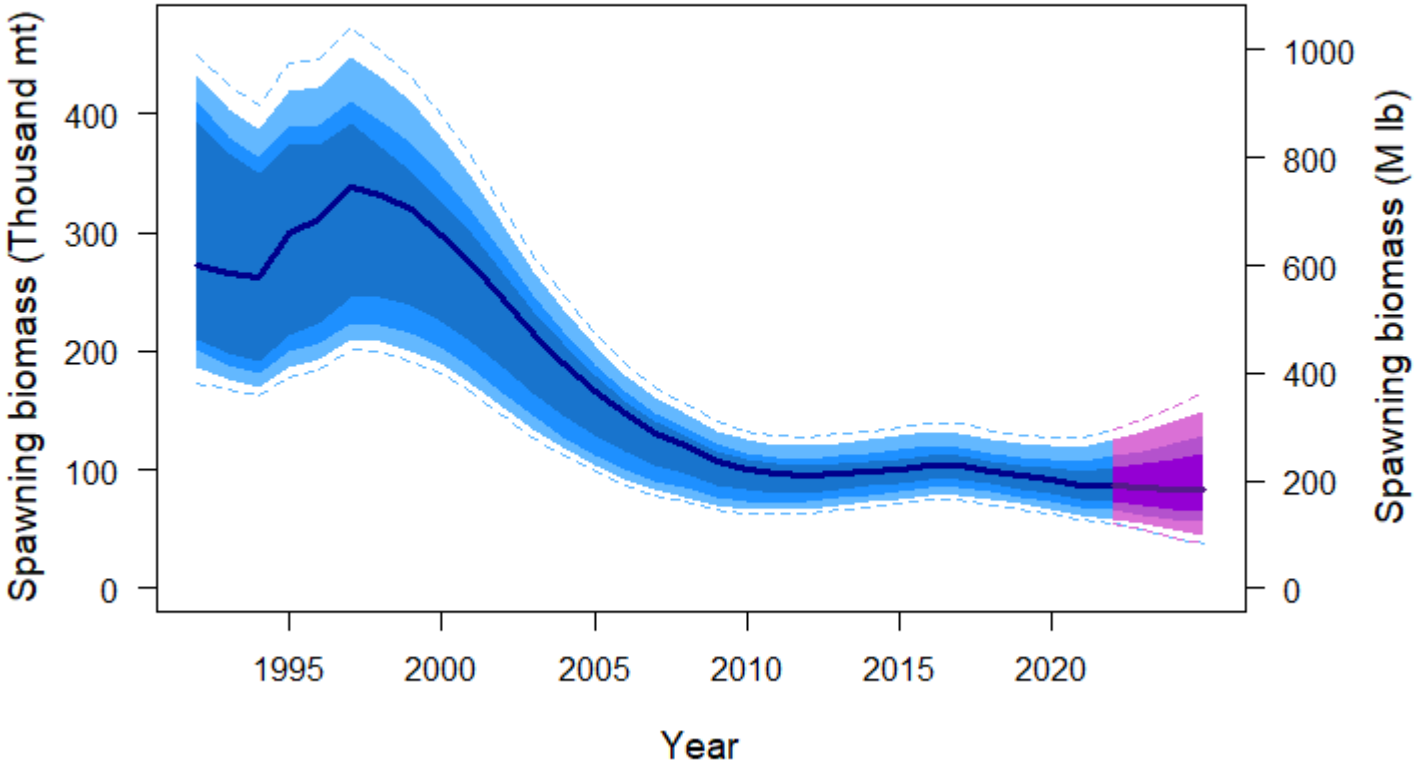
# Adopted 2022 mortality limit (41.2 M lb)

- Based on the IPHC's reference level of fishing intensity ( $F_{43\%}$ )
- Corresponds to projections of:
  - 59% probability of decrease in SB during 2022
    - 25% chance of dropping by 5% or more
  - 44% probability of dropping below  $SB_{30\%}$  management trigger by 2023
  - 50% probability of fishery limit decrease in 2023





# Projected stock trend

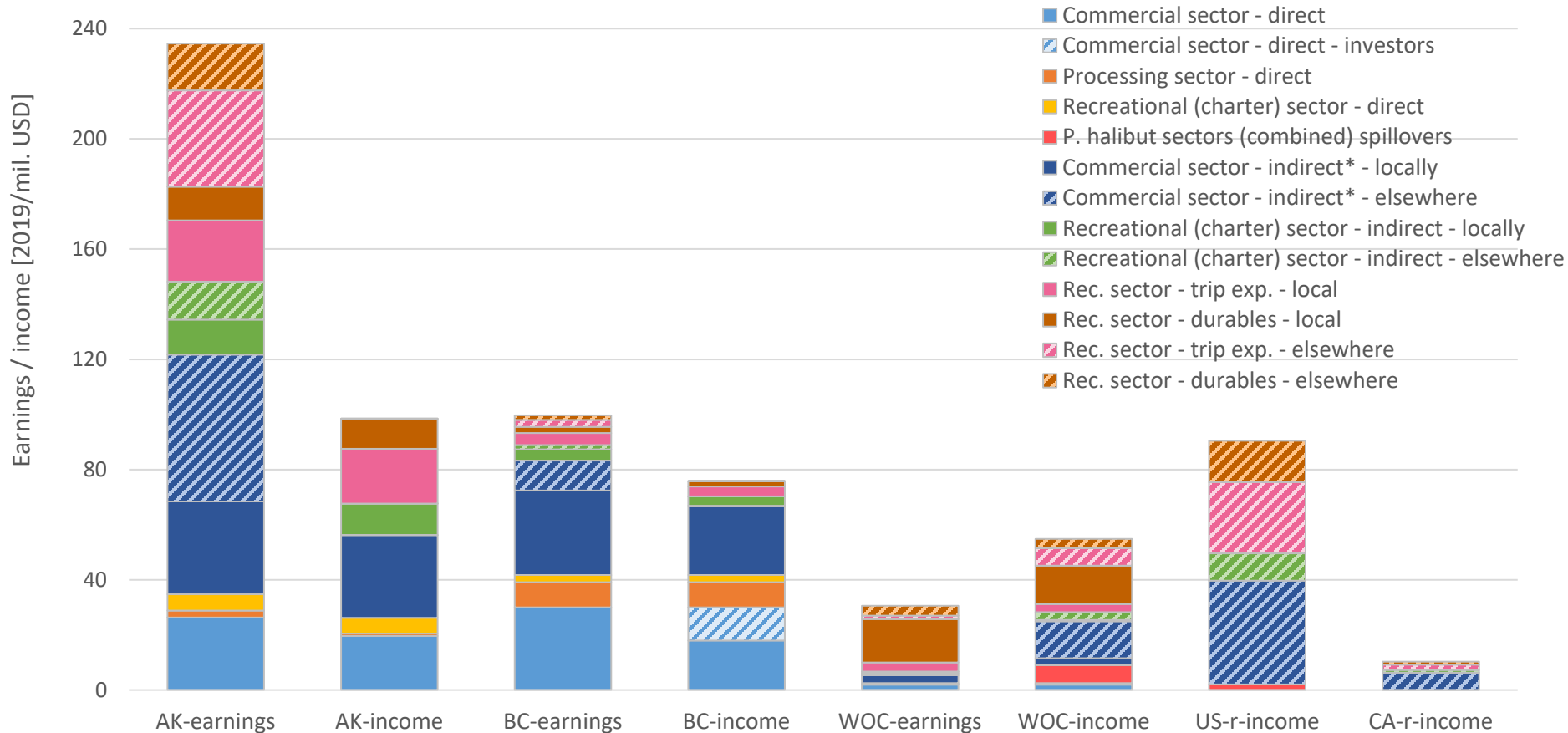


# For more data and assessment information

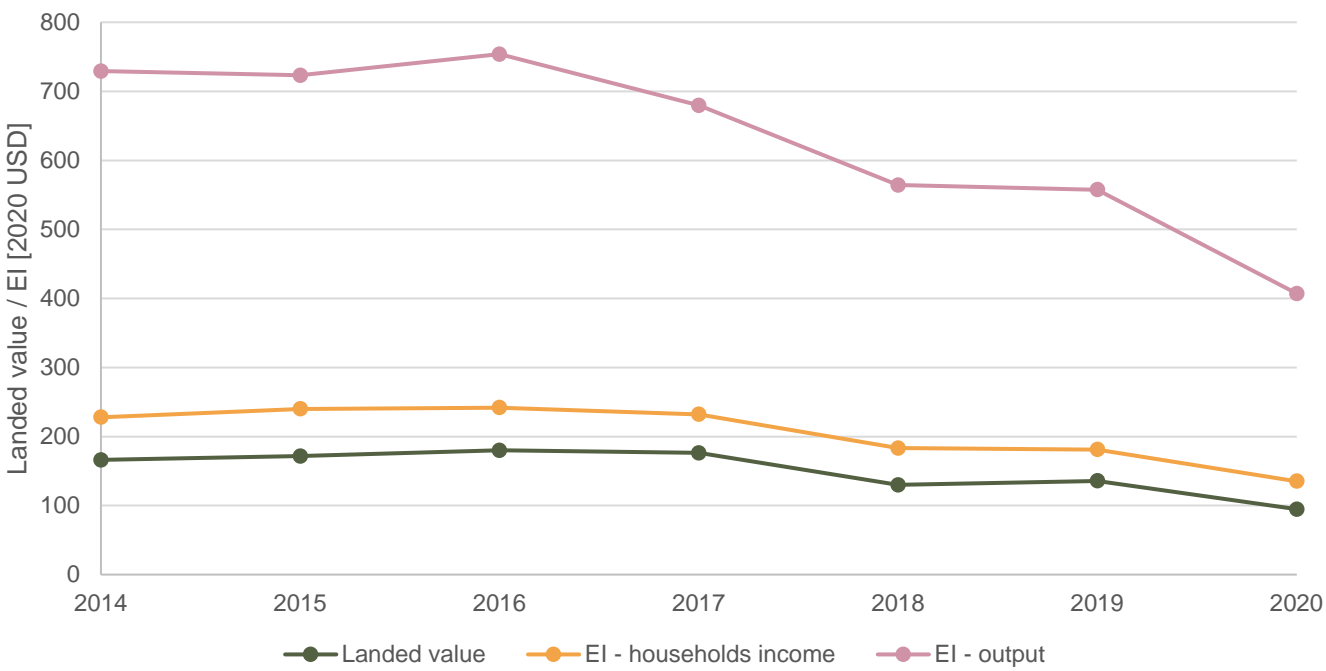
- Summary for AM098: [IPHC-2022-AM098-10](#)
- Assessment and data overview documents are available through the [stock assessment page](#) of the IPHC's website:
  - [IPHC-2022-SA-01](#)
  - [IPHC-2022-SA-02](#)



# Economic impact assessment – impact on households



# Economic impact assessment – time series



Pacific halibut commercial fishing EI estimates for 2014-2020 in comparison with landed value in mil 2020 USD.



# 98<sup>th</sup> Session of the IPHC Annual Meeting (AM098)

- Other decisions:
  - Fishing periods
  - Charter management measures (IPHC Regulatory Areas 2C and 3A)
  - Trap gear use in IPHC Regulatory Area 2B
  - Fishery-independent Setline Survey (FISS)



# Fishing Periods

- The Commission **ADOPTED** fishing periods for 2022 as provided below, thereby superseding Section 9 of the IPHC Pacific halibut fishery regulations:
  - All commercial fishing for Pacific halibut in all IPHC Regulatory Areas may begin no earlier than **6 March** and must cease on **7 December**.
  - This implies same fishing periods as in 2021



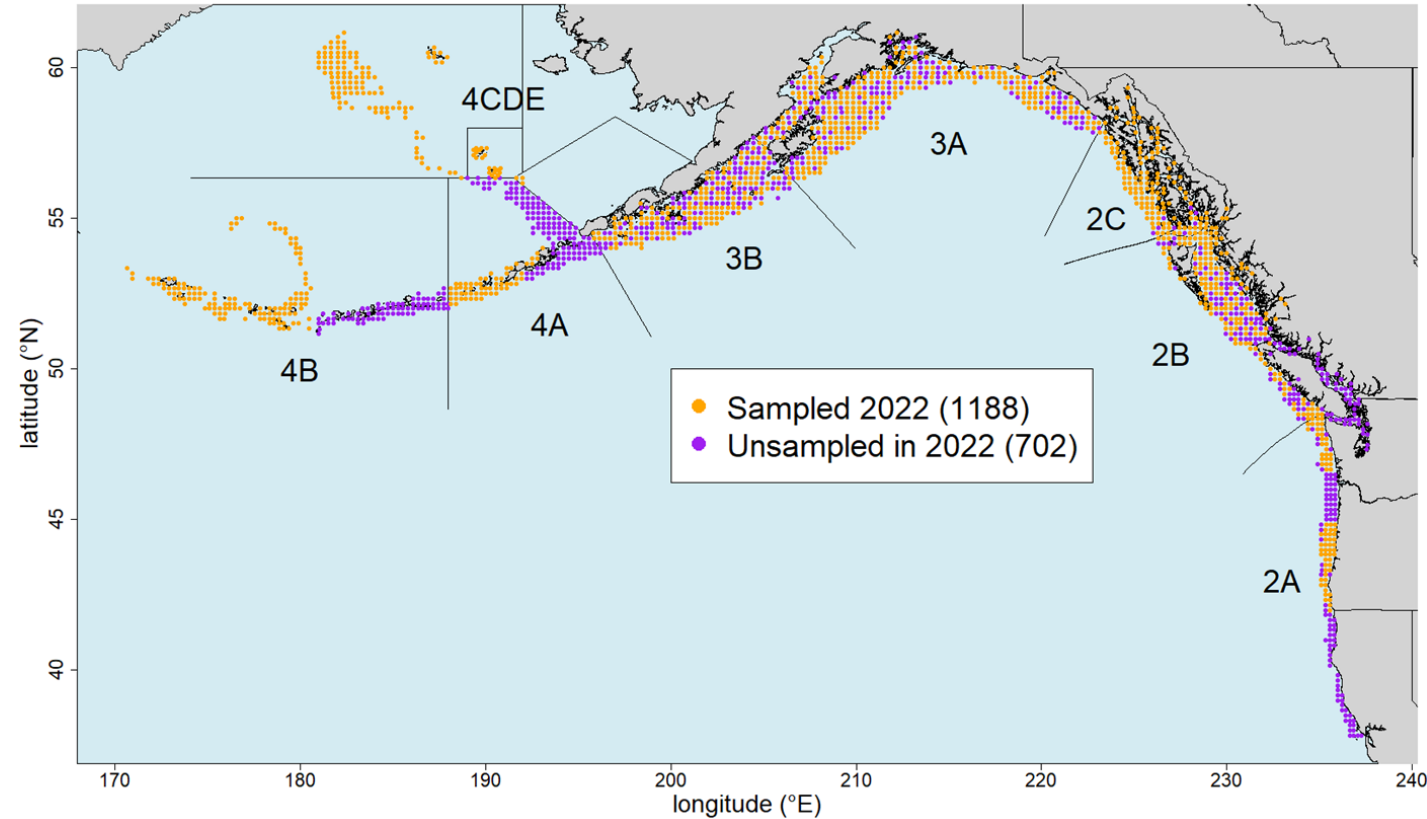
# Charter Management Measures

The Commission **ADOPTED** charter management measures for IPHC Regulatory Areas 2C and 3A for 2022:

- IPHC Regulatory Area 2C – one-fish bag limit with size limit of less than or equal to 40 inches or greater than or equal to 80 inches
- IPHC Regulatory Area 3A – two-fish bag limit with one fish of any size and a second fish less than or equal to 28 inches, Wednesdays and two Tuesdays (7/26 and 8/2) closed to retention of Pacific halibut, one trip per vessel, one trip per CHP per day, and no annual limit. See PropB2 for additional detail.
- Recordkeeping requirements for annual limits (See PropB1, not applicable in 2022)



# 2022 Fishery-Independent Setline Survey (FISS)



The Commission **RECALLED** the IM097 endorsement of the **FISS design for 2022** (map) and provisional endorsement of the designs for 2023 and 2024, and made no further amendments at AM098.





# Looking ahead

- The Commission accepted the offer by Canada to host the 99<sup>th</sup> Session of the IPHC Annual Meeting (AM099) in 2023 in Victoria, BC, Canada from 23 to 27 January 2023.
  - Should the COVID-19 pandemic remain an issue at that time, the meeting may be held electronically.
- 12<sup>th</sup> Special Session of the IPHC (SS012) (25 February):
  - FY2023 budget adoption
  - Management Strategy Evaluation
  - IPHC Fishery Regulations: Daily bag limit in IPHC Regulatory Area 2B (Sect. 28) (IPHC-2022-AM098-PropB4)



# Meeting materials and Report

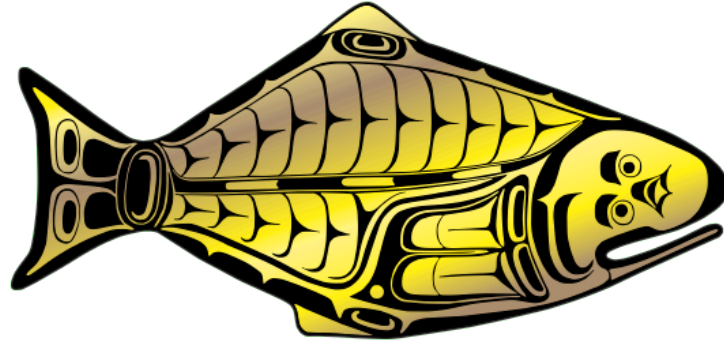
- 98<sup>th</sup> Session of the IPHC Annual Meeting (AM097) materials available at:

<https://www.iphc.int/venues/details/98th-session-of-the-iphc-annual-meeting-am098>

- AM098 Report
  - In review



**INTERNATIONAL PACIFIC**



**HALIBUT COMMISSION**

