

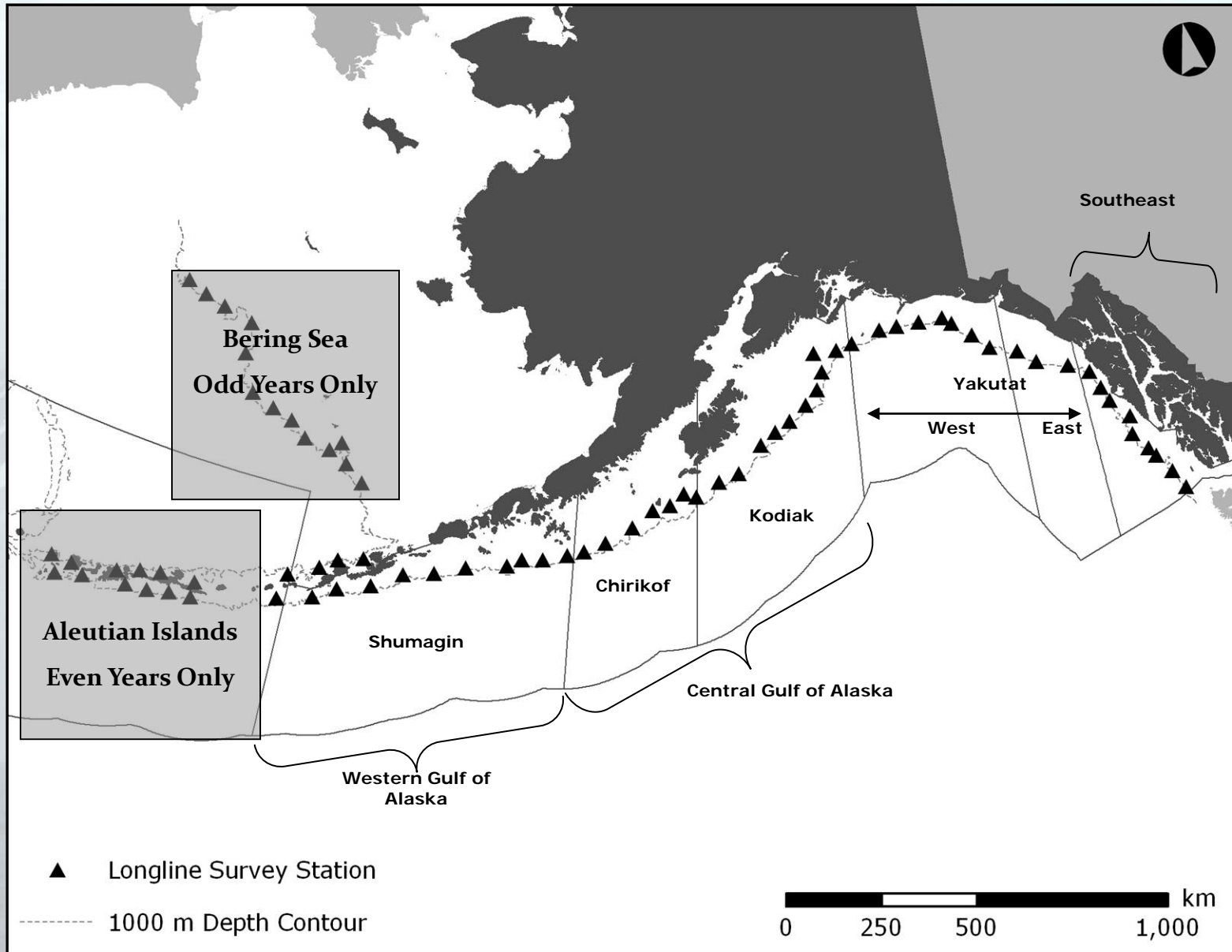


Longline survey 2017

Bering Sea year, *Preliminary results*

Chris Lunsford, Dana Hanselman, Cara Rodgveller, Pat Malecha
Alaska Fisheries Science Center, Auke Bay Laboratories

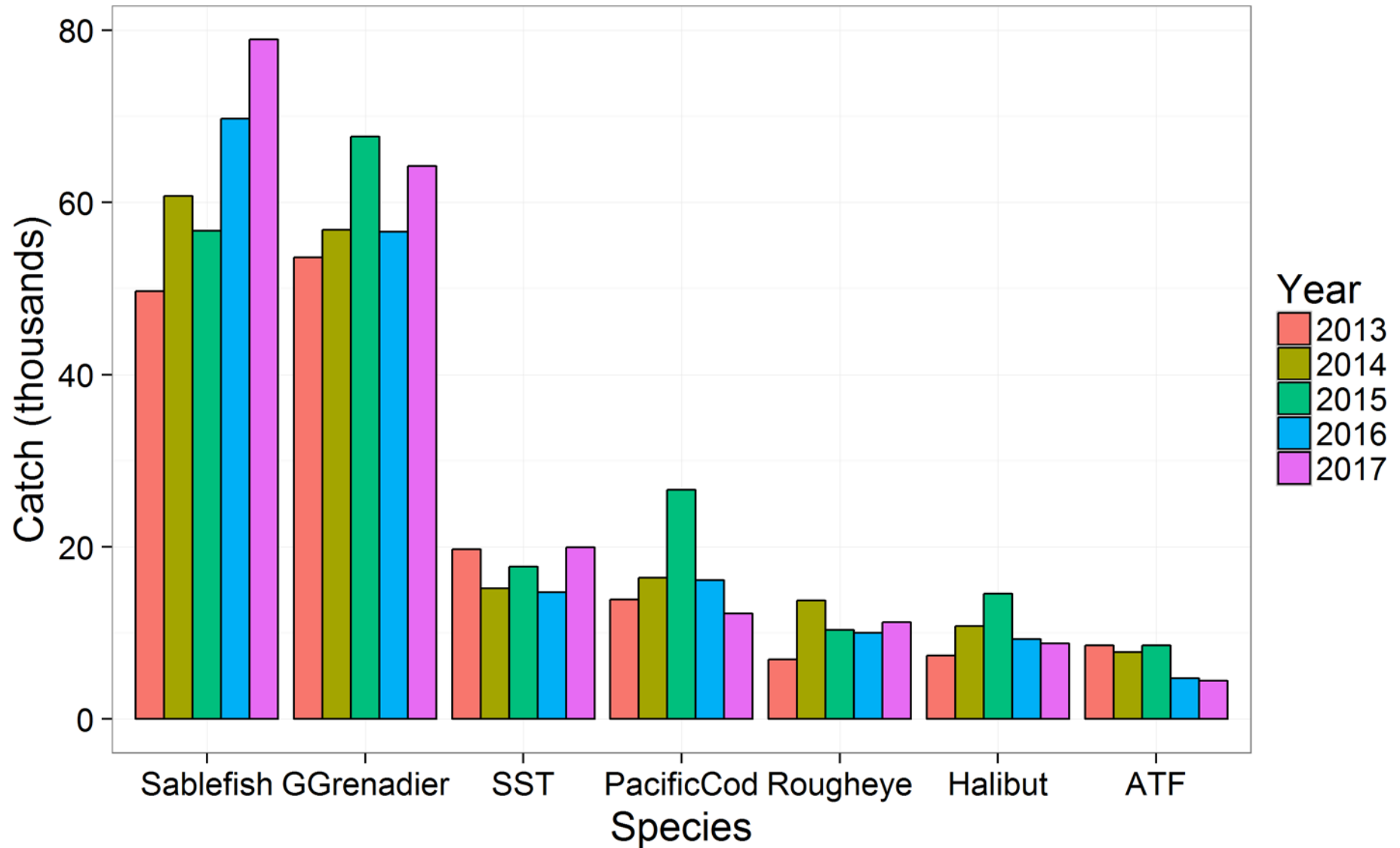
Survey Geographic Coverage



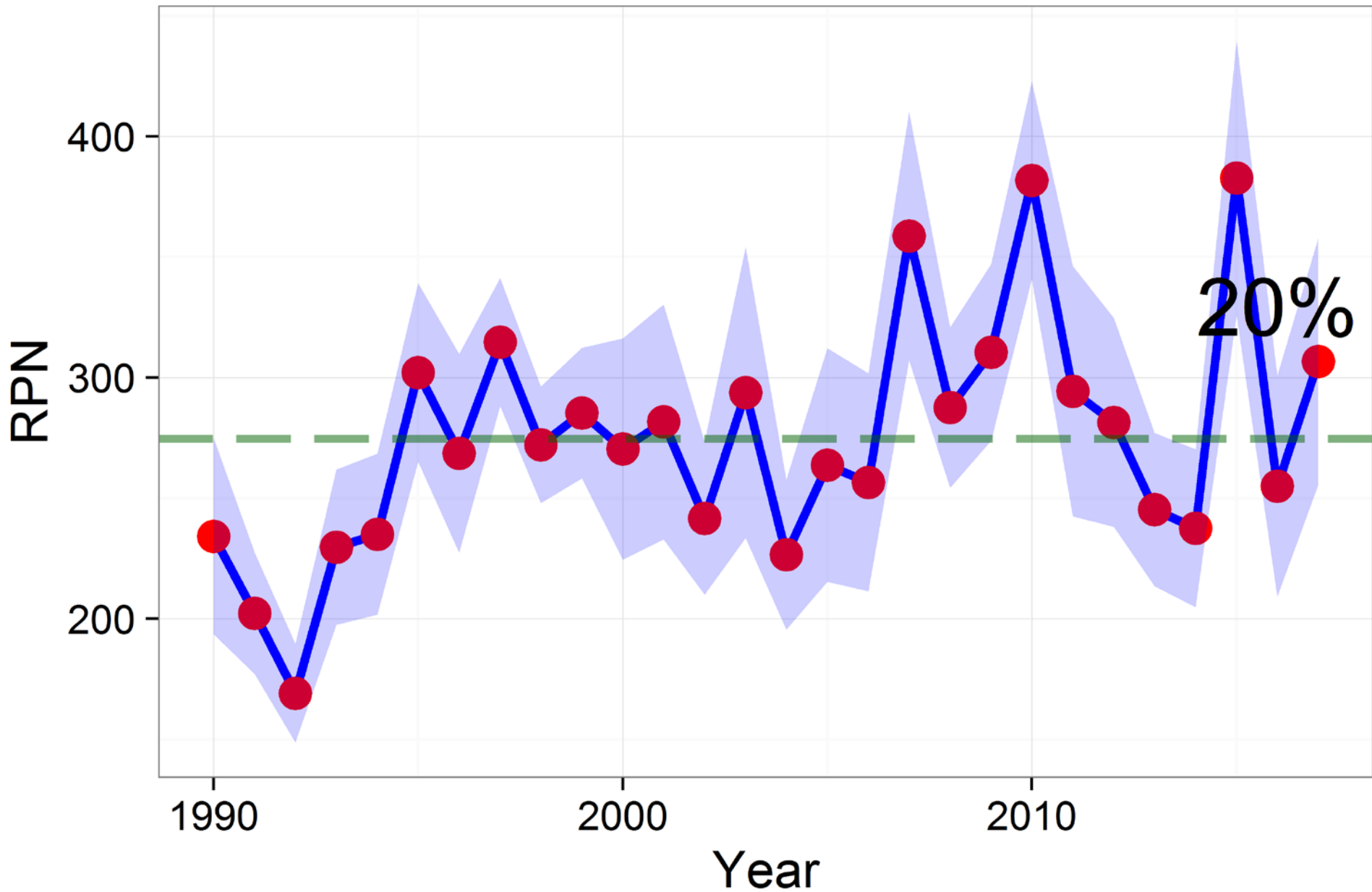
Preliminary results

- Just compiled over the weekend so use caution
- Whale corrections have not been made
- These use the new area sizes calculated in Echave et al. (2013)
- These also use the 150-200 m depth strata allowed by using the new area sizes
- Ignore 1990-1992 for shortraker/rougheye

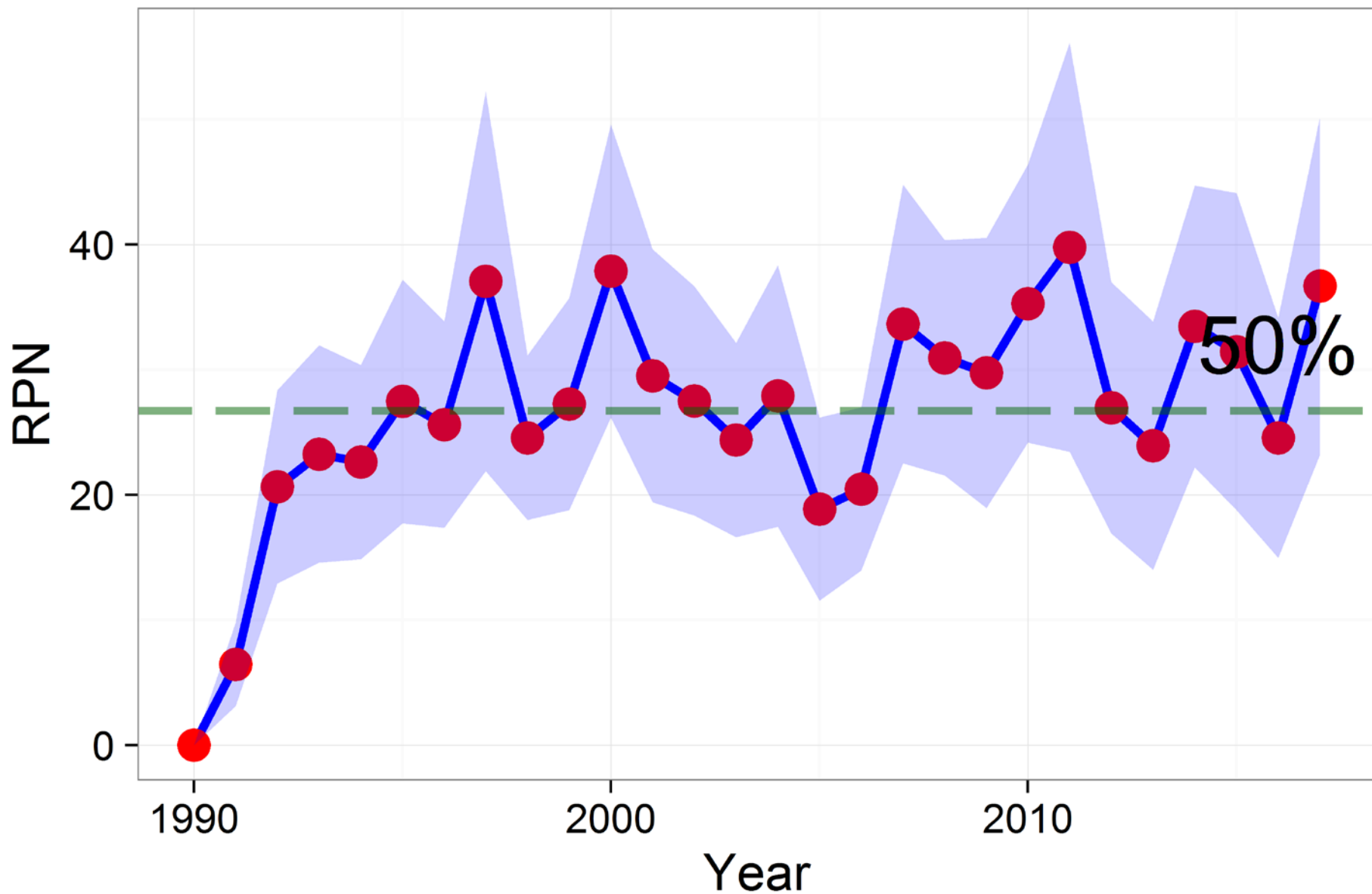
Recent raw catches by species



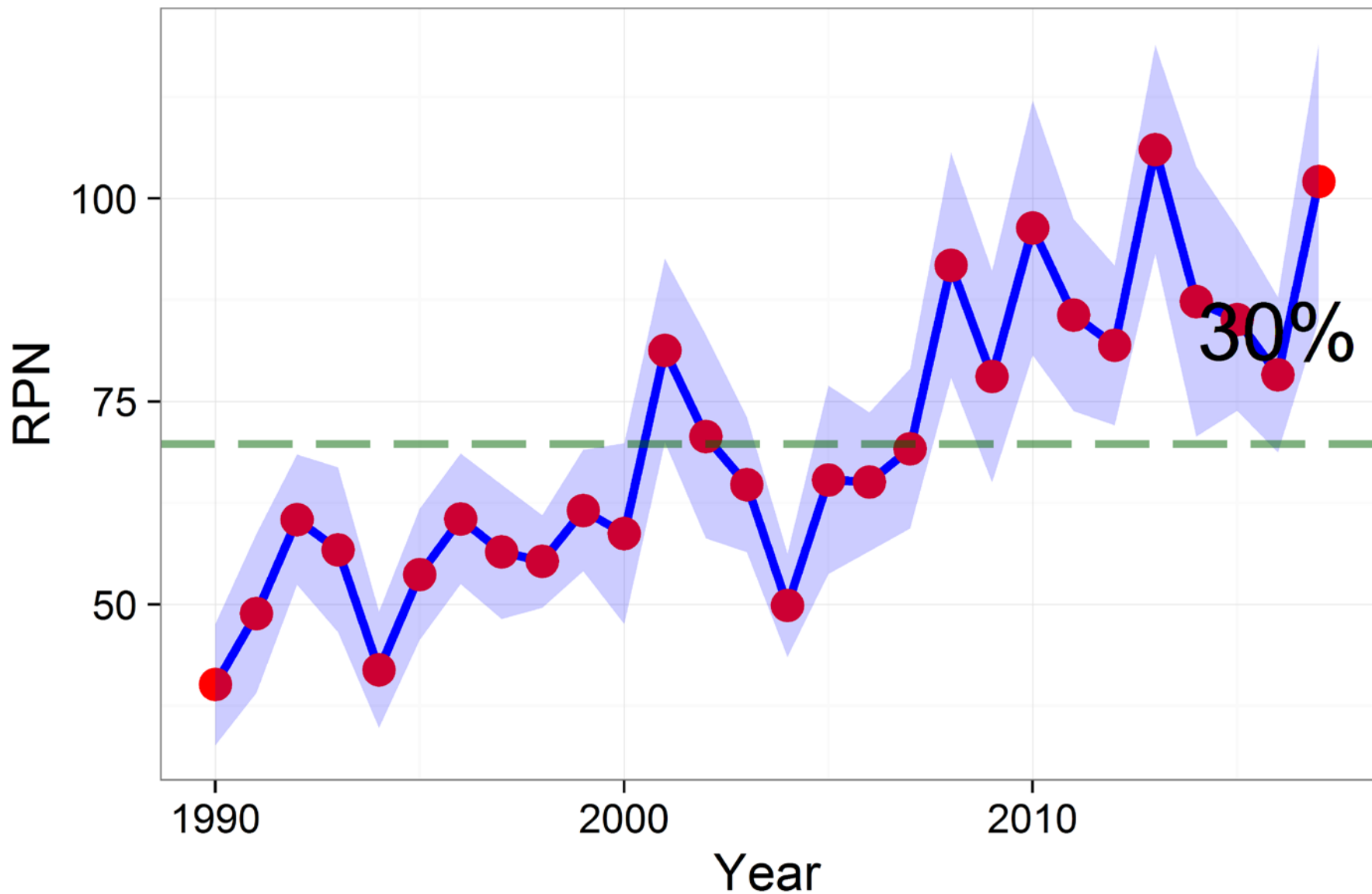
GOA G.Grenadier longline survey RPNs



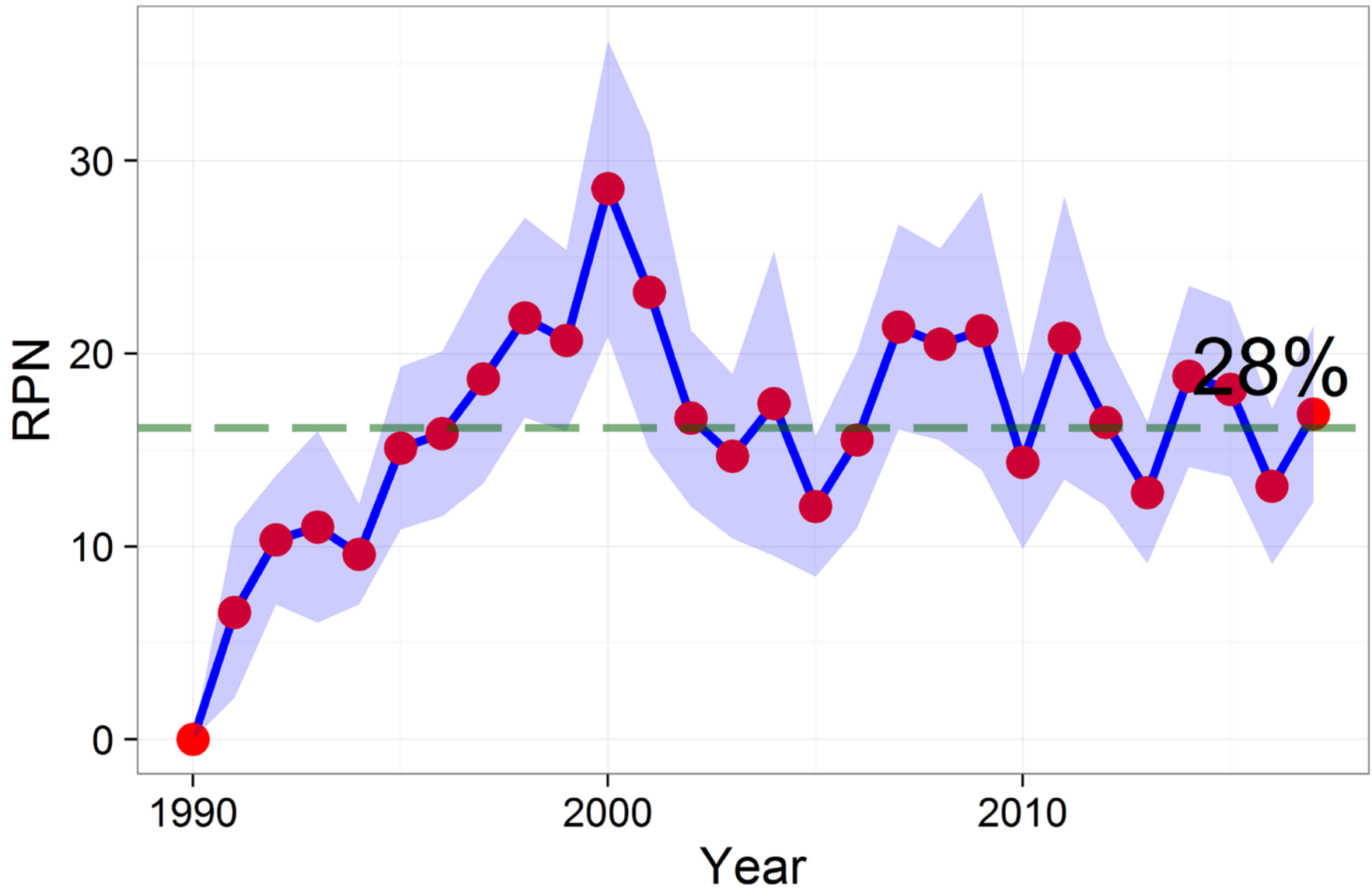
GOA Rougheye longline survey RPNs



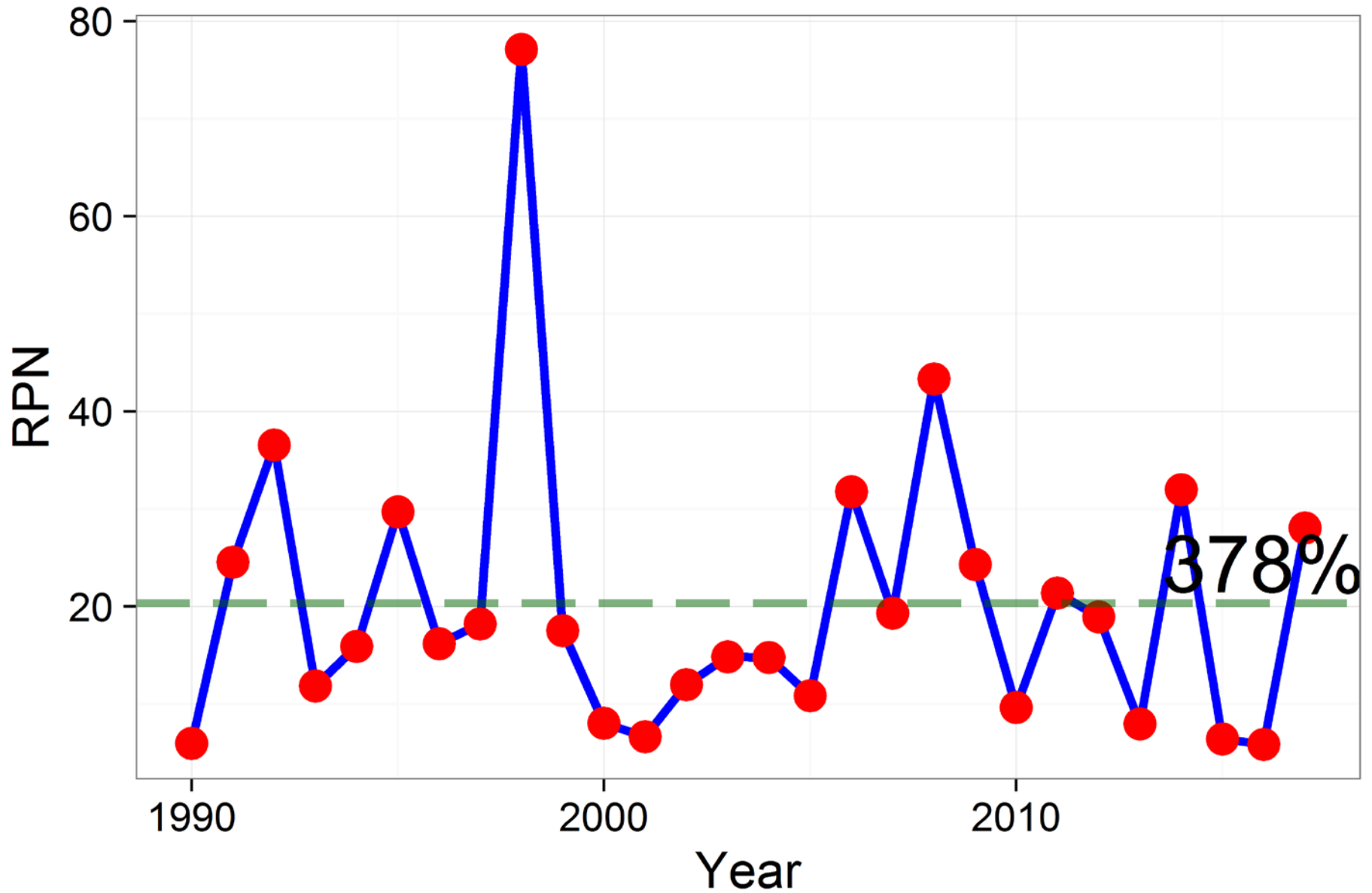
GOA Thornyhead longline survey RPNs



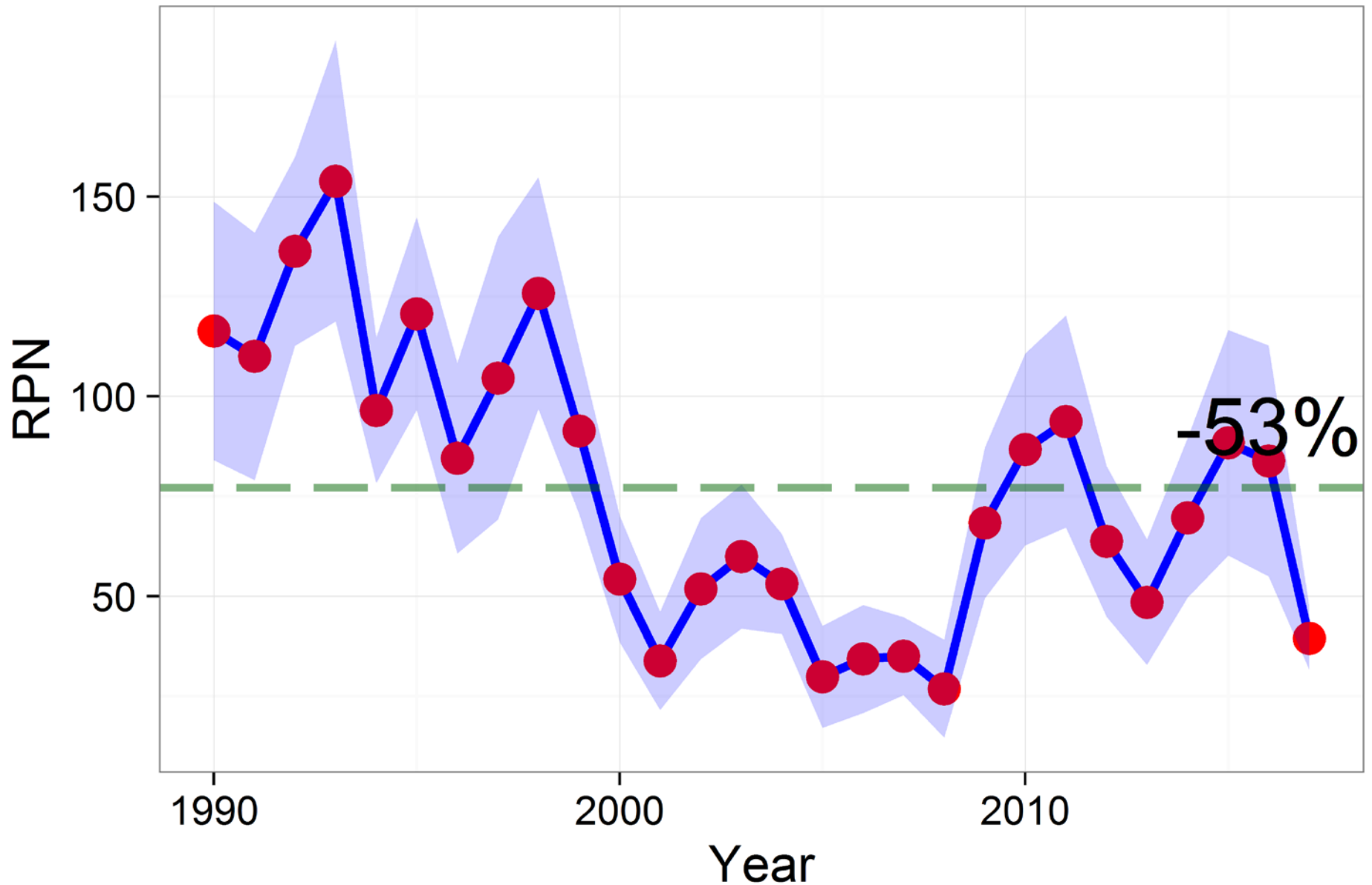
GOA Shortraker longline survey RPNs



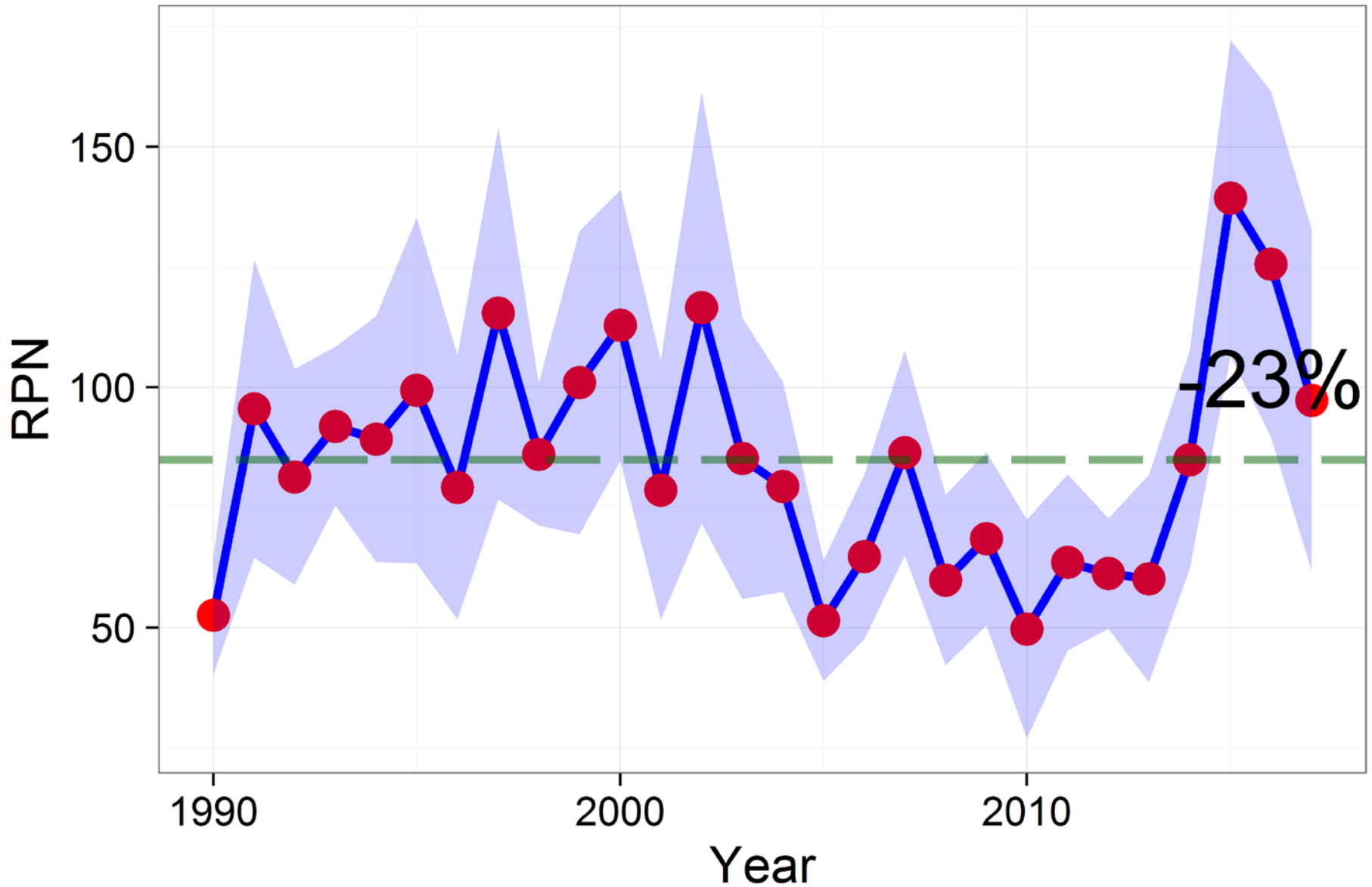
GOA Dogfish longline survey RPNs



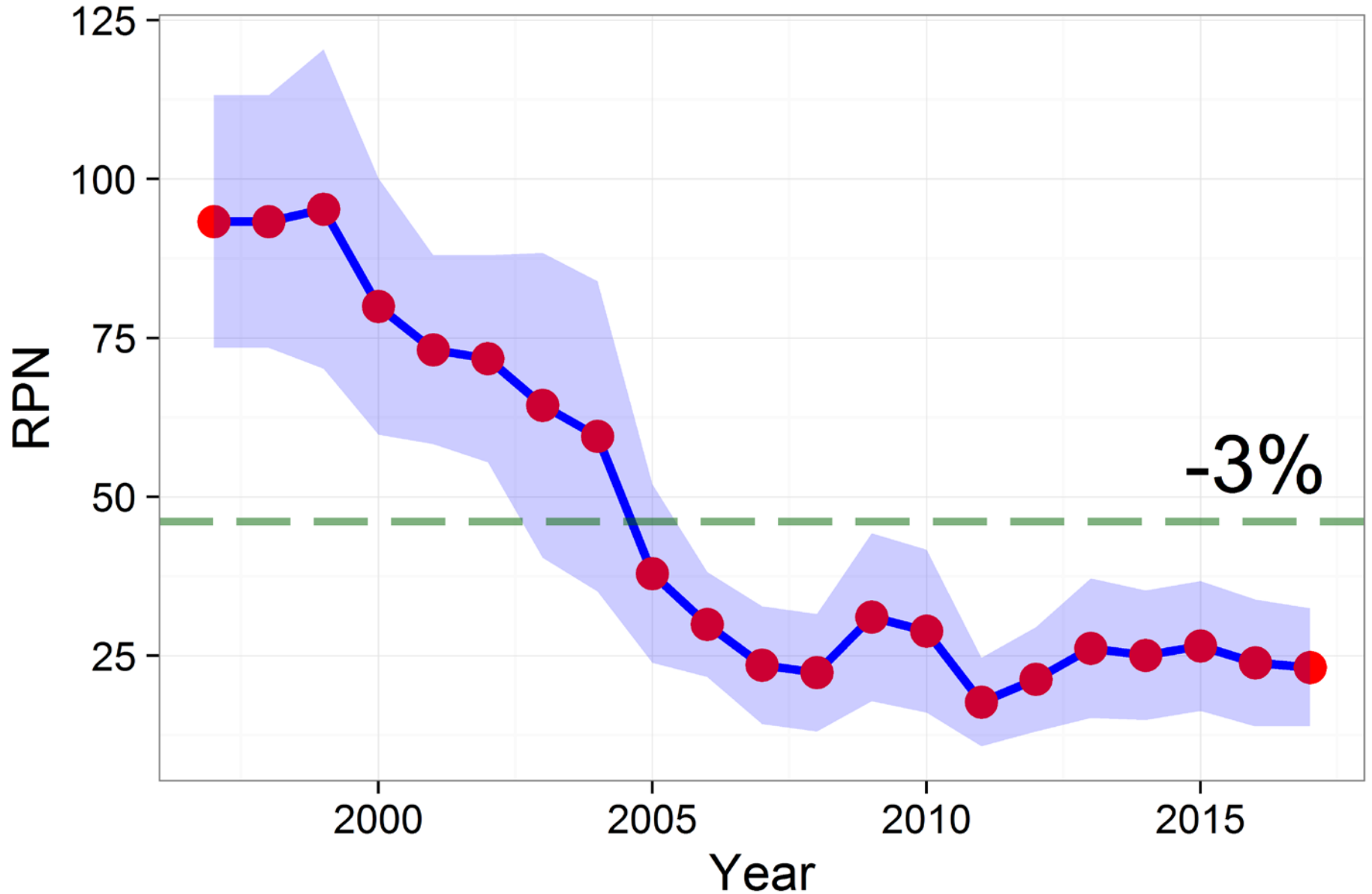
GOA Pacific cod longline survey RPNs



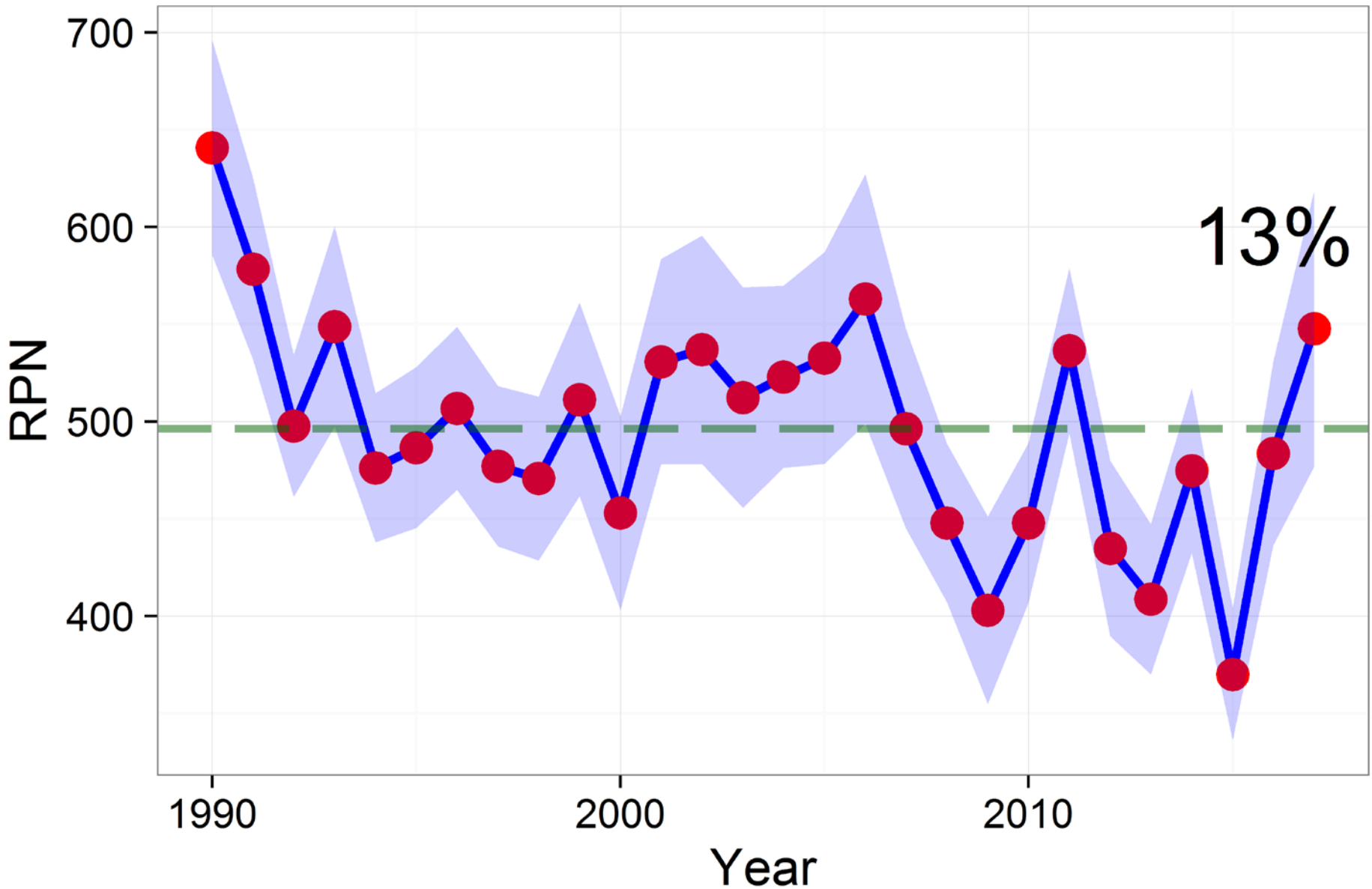
GOA Halibut longline survey RPNs



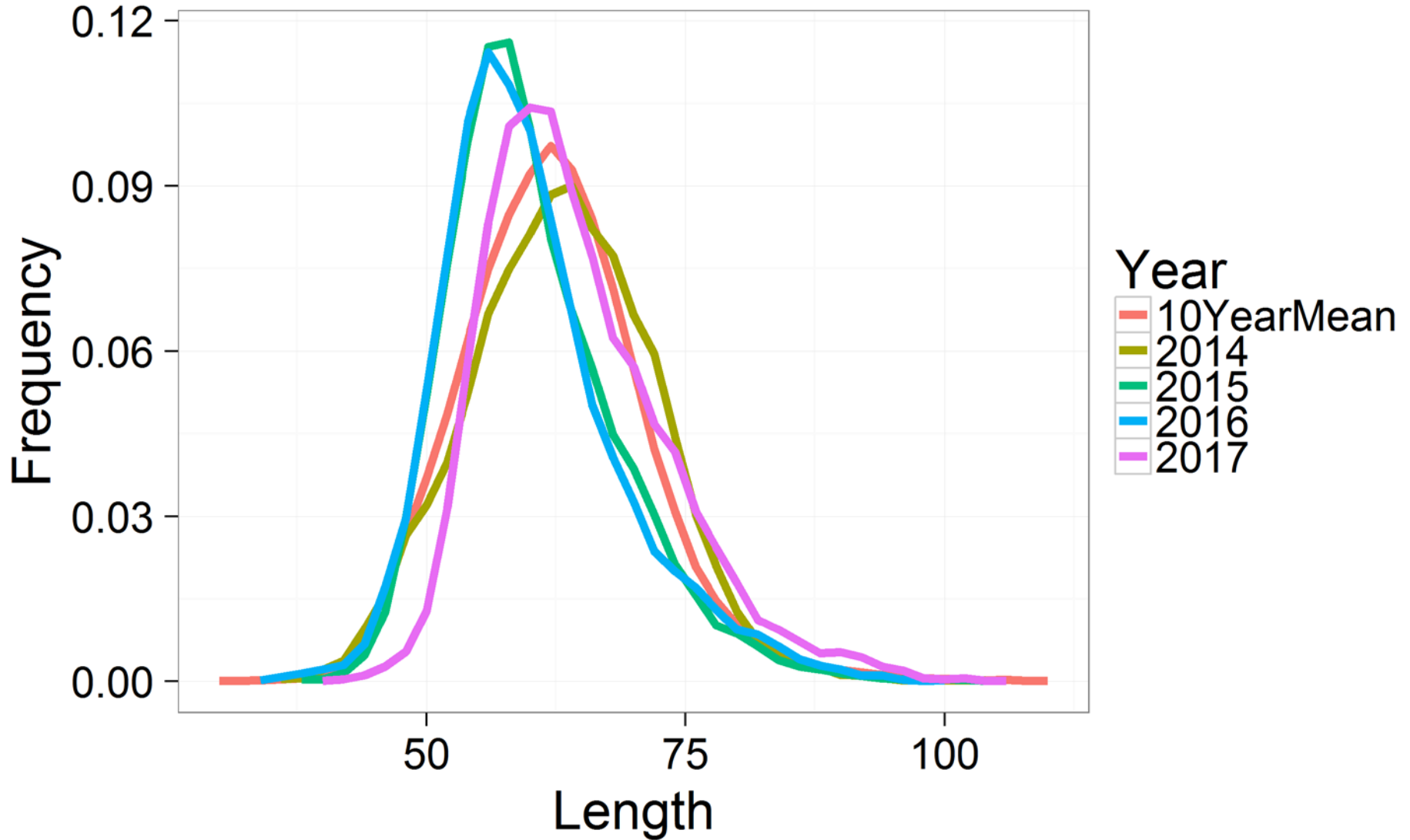
Turbot longline survey RPNs



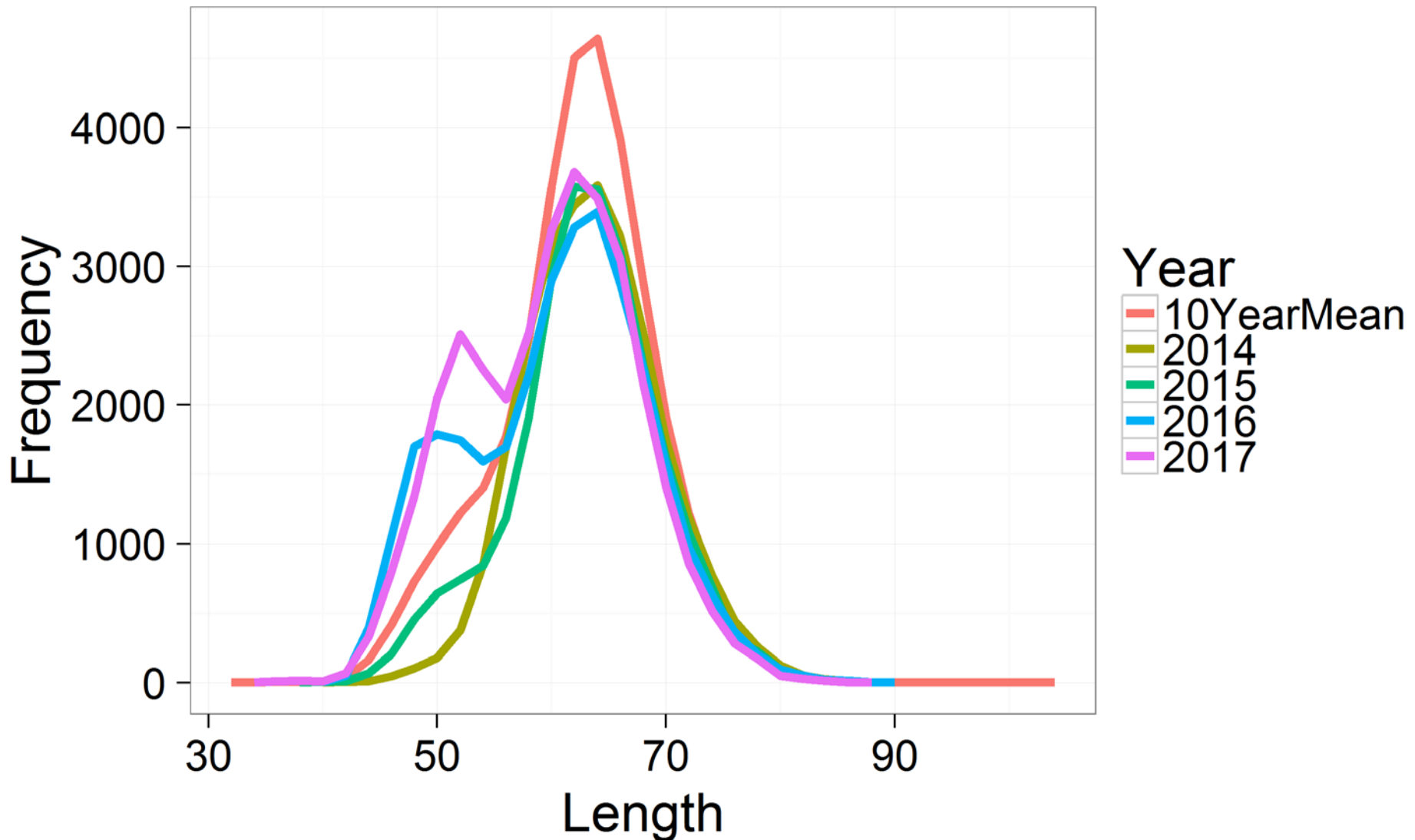
Sablefish longline survey RPNs w/ 95% CIs



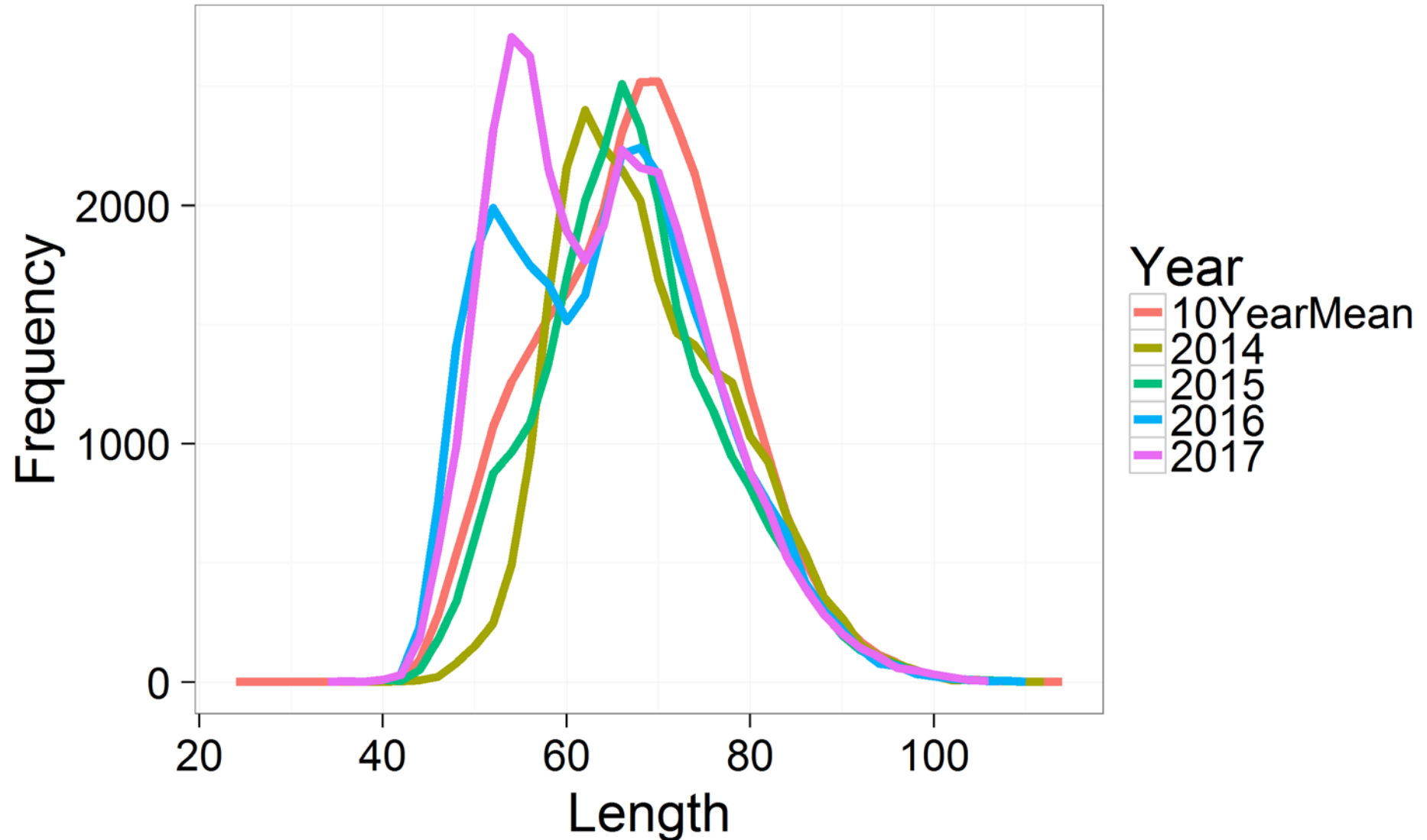
Recent Pacific cod length frequencies



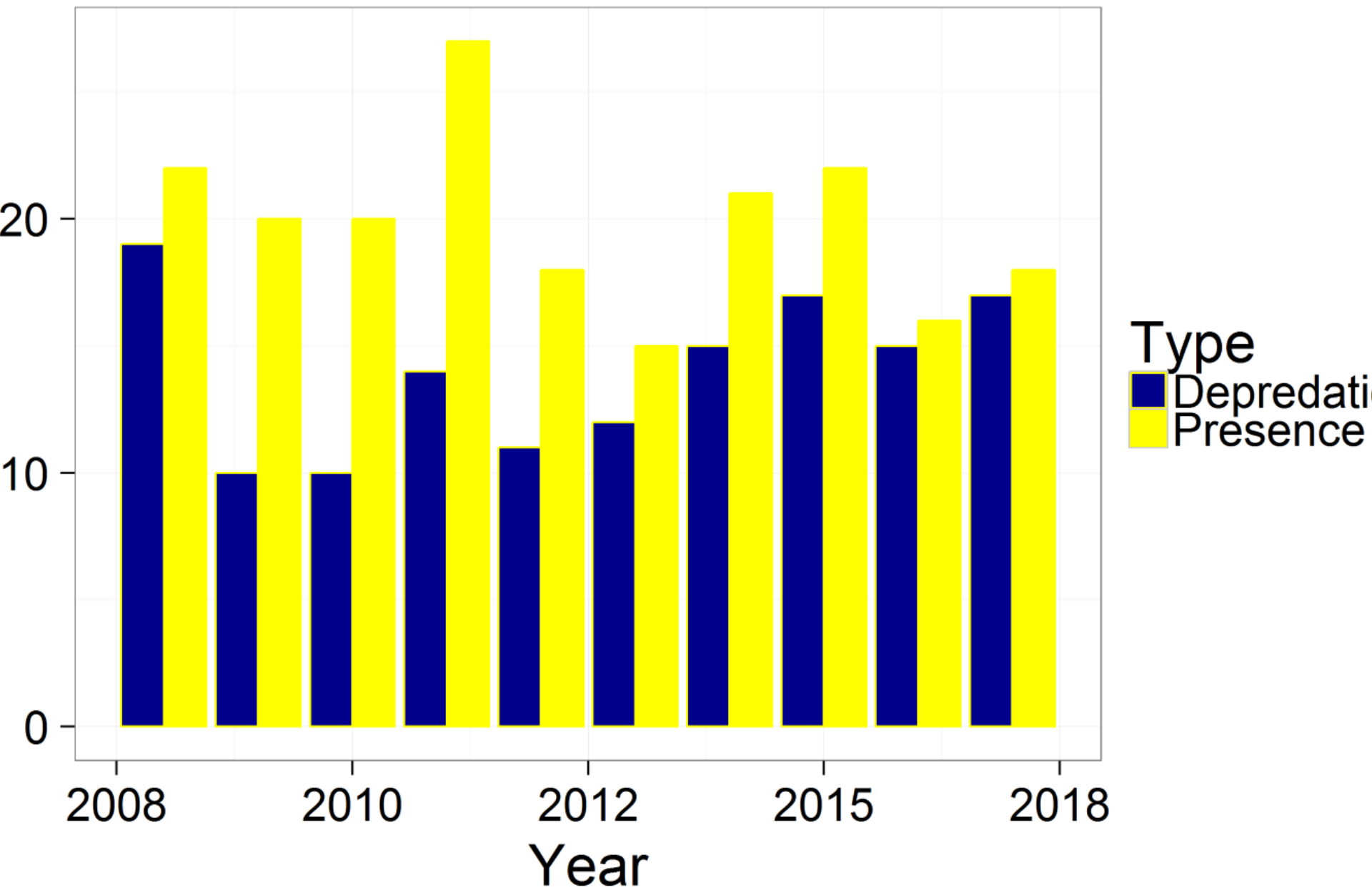
Recent male sablefish length frequencies



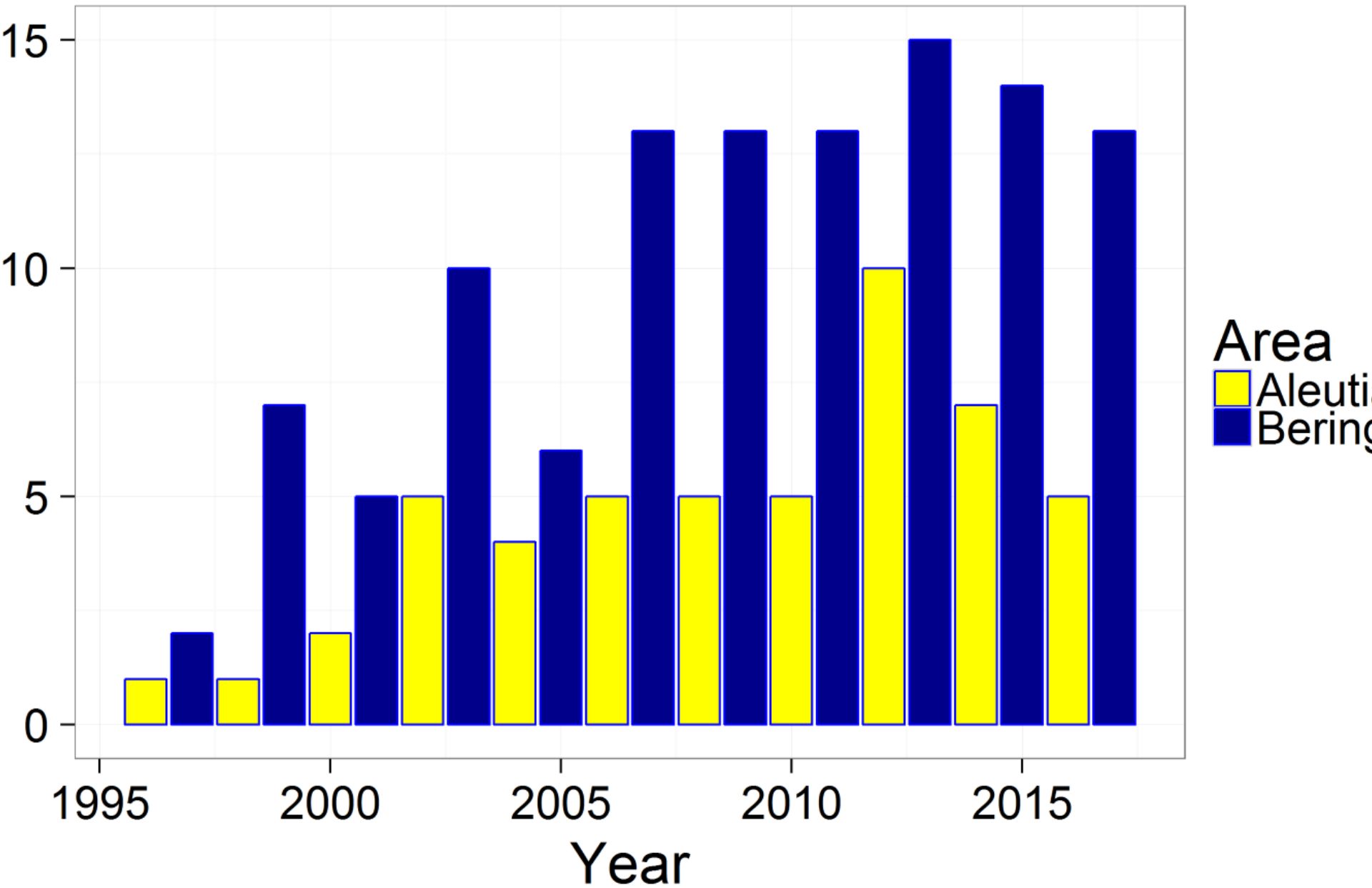
Recent female sablefish length frequencies



Sperm whale interactions



Killer whale depredation



LL Survey Observations

- Pyrosomes in Sablefish/Rockfish Stomachs
 - Southeast to Kayak Island
- Vessel Interactions
 - Increase in all regions
- Rare Sightings
 - Brown Booby
 - Masked Booby



2017 Length Frequencies GOA sablefish

