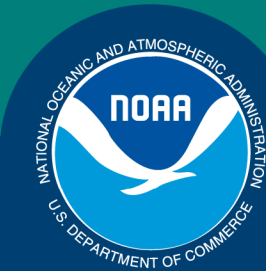


Science, Service, Stewardship



Economic Status Report Summary: BSAI Crab 2016

Crab Plan Team Meeting

September 21, 2016

Brian Garber-Yonts

Economics and Social Science Research Program,
AFSC

**NOAA
FISHERIES
SERVICE**

2015 SAFE Economic Status Reports available at:

<http://www.afsc.noaa.gov/REFM/Socioeconomics/SAFE/default.php>



The screenshot shows the NOAA Fisheries Alaska Fisheries Science Center website. The header includes the NOAA logo and the text "NOAA FISHERIES | ALASKA FISHERIES SCIENCE CENTER". Below the header is a navigation menu with links for General Info, Species, Programs, Publications, Data & Tools, Images, Education & Outreach, and Search. The main content area is titled "Economic and Social Sciences Research" and "Annual Economic Status Reports from the Stock Assessment and Fishery Evaluations". It features two sections: "Groundfish Fisheries of the Gulf of Alaska and Bering Sea/Aleutian Islands Area" and "King and Tanner Crab Fisheries of the Bering Sea and Aleutian Islands Regions". Each section has a list of links for "Most recent Economic Status Report (December 2013)", "Previous reports", "Data downloads", and "User feedback survey". On the right side, there is a sidebar menu with links for "REFM Home", "Socioeconomics", "Research", "Publications", "Posters", "Economic Status Reports", "Data Collection Programs", "Alaska Community Profiles", "Bibliography", "Resources", and "Personnel".

NOAA FISHERIES | ALASKA FISHERIES SCIENCE CENTER
NATIONAL OCEANIC AND ATMOSPHERIC ADMINISTRATION

General Info Species Programs Publications Data & Tools Images Education & Outreach Search

Economic and Social Sciences Research

Annual Economic Status Reports from the Stock Assessment and Fishery Evaluations

[Groundfish Fisheries of the Gulf of Alaska and Bering Sea/Aleutian Islands Area](#)

- [Most recent Economic Status Report \(December 2013\)](#)
- [Previous reports](#)
- [Data downloads](#)
- [User feedback survey](#)

[King and Tanner Crab Fisheries of the Bering Sea and Aleutian Islands Regions](#)

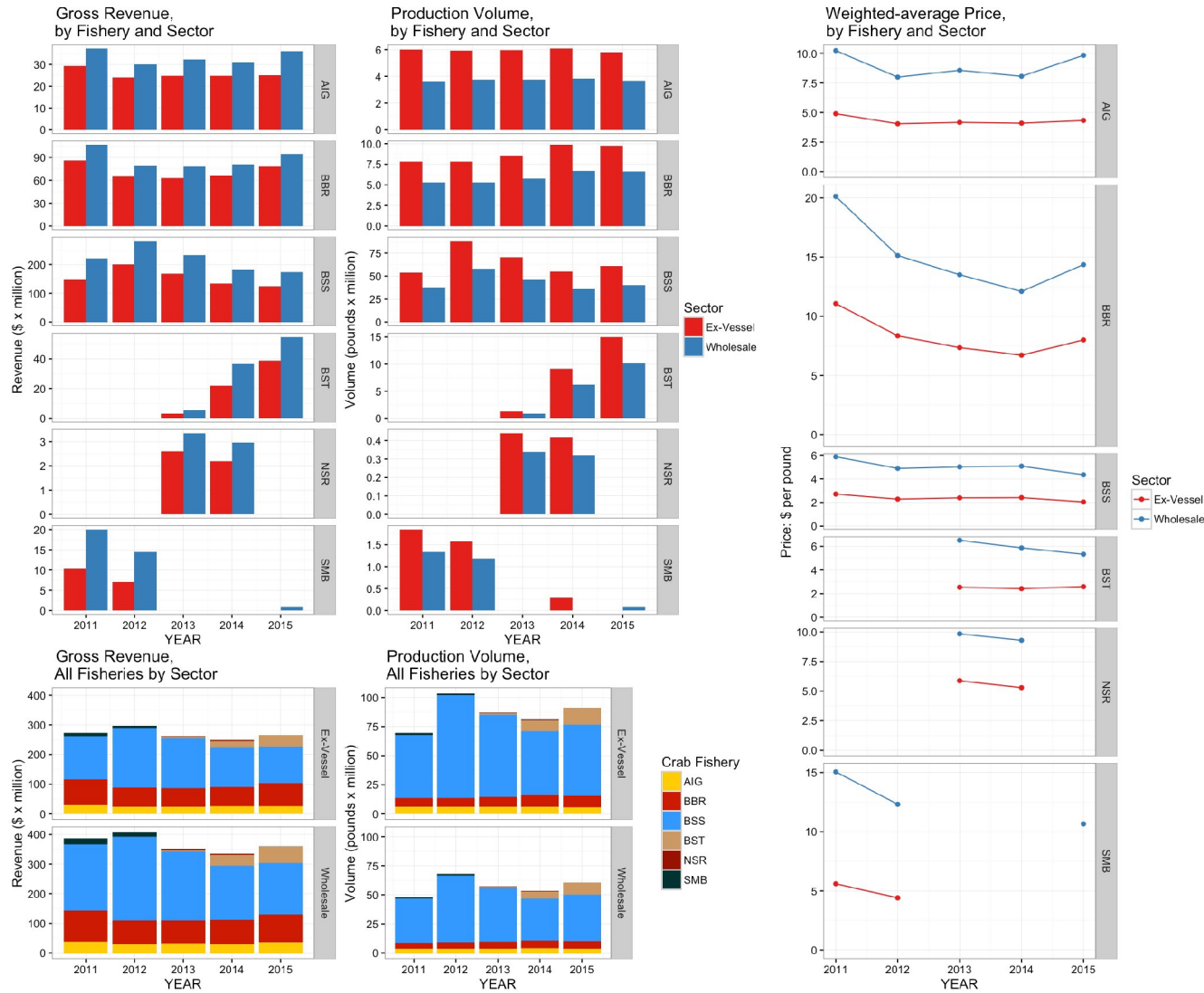
- [Most recent Economic Status Report \(December 2013\)](#)
- [User feedback survey](#)

REFM Home

Socioeconomics

- Research
- Publications
- Posters
- Economic Status Reports
- Data Collection Programs
- Alaska Community Profiles
- Bibliography
- Resources
- Personnel

Summary of key economic indicators: 2011 – 2015 production and sales by BSAI crab fishery

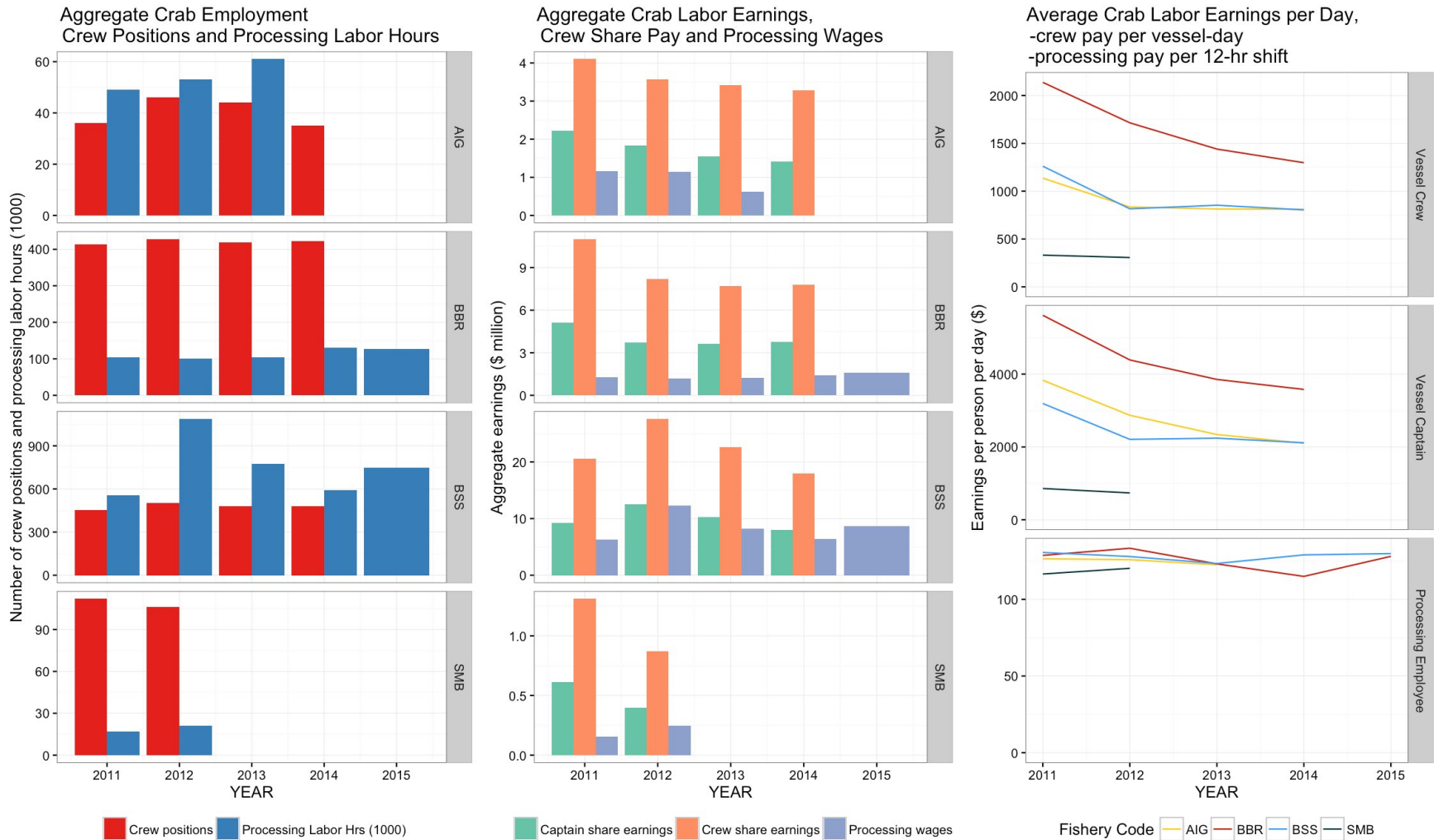


Summary of key economic indicators: Production and sales, 2015 BSAI crab fisheries

	Pounds (metric tons)	% change	Gross revenue	% change
Harvest sector	91.5 million (41.5 thousand mt)	+13%	\$266 million	+7.2%
Processing sector	60.5 million (27.4 thousand mt)	+13%	\$360 million	+13.7%

	Ex-vessel average price/lb	% change	1st Wholesale average price/lb	% change
AIG	\$8.43	5.6	\$17.89	22.0
BBR	\$14.71	19.2	\$26.46	18.7
BSS	\$4.45	-15.4	\$9.41	-14.4
BST	\$5.01	7.0	\$11.20	-9.2

Summary of key economic indicators: crab employment and earnings, 2011-2015 CR fisheries



Summary of key economic indicators: crab employment and earnings, 2014 CR fisheries

- Harvest sector

 - 82 active vessels over all CR fisheries (from 74 in 2014)

 - Crew positions: 1332 (from 1191 in 2014)

 - note: aggregated over distinct counts for each CR fishery

 - Crew share earnings: \$37.9 million (+18% Y/Y)

 - Captain share earnings: \$16.7 million (+18% Y/Y)

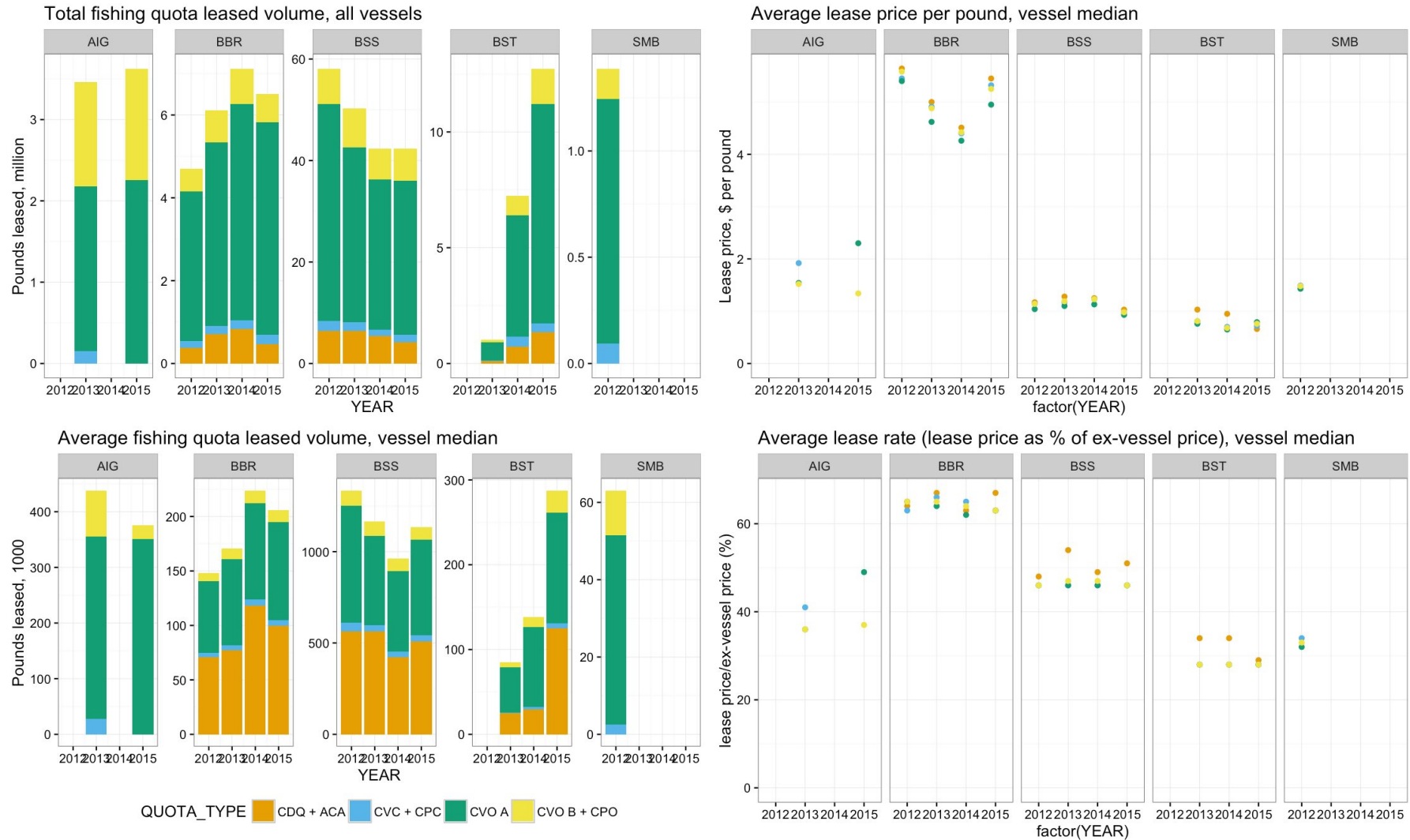
- Processing sector

 - Paid hours: 1105 thousand (+31% Y/Y)

 - Processing labor wages: \$12.7 million (+39% Y/Y)

 - Estimated average hourly wage increased to \$10.68 (+\$0.63/hr)

Summary of key economic indicators: crab IFQ lease activity, 2012 - 2015



Summary of key economic indicators: crab IFQ lease activity, 2015 BBR and BSS fisheries

- BBR Fishery

 - 6.5 million pounds leased (-9%)

 - \$33.6 million total lease payments (+9%)

 - \$5.24 per pound (median)

 - 64% of ex-vessel price (median)

- BSS Fishery

 - 42.3 million pounds leased (0%)

 - \$41.96 million total lease payments (-12%)

 - \$0.98 per pound (median)

 - 47% of ex-vessel price (median)

- BST Fishery

 - 12.7 million pounds leased (+76%)

 - \$9.8 million total lease payments (+102%)

 - \$0.73 per pound (median)

 - 28% of ex-vessel price (median)

BSAI Crab SAFE Economic Status Report

Economic Output

- Annual TAC/GHL, Landings, Deadloss, and Finished Product Volume
- Ex-vessel and First Wholesale Prices and Revenue Value of Production

Income and Employment

Operating, Production, and Capital Costs

Quota Holdings, Sales, and Leasing Activity

- QS/PQS Holding
- Harvest Quota Lease Activity and Average Prices
- Quota Share Sale Transfers and Average Prices
- IFQ and QS Price Comparison

Fishing Capacity, Effort, and Efficiency

Concentration of Catch Volume

International Trade in Crab Commodities

Catch-share Program Economic Performance Metrics

- IFQ quota and landings
- Utilization of available IFQ
- Number of entities holding IFQ crab share
- Active vessels fishing IFQ
- Number of trips harvesting IFQ Crab
- Season lengths
- Total IFQ-crab and non-IFQ-crab landings revenue
- Average combined IFQ crab price per pound
- IFQ crab revenue per vessel
- IFQ Crab revenue per trip

Price and Revenue Forecasts