

EI SUPPLEMENTAL INFORMATION ON BSAI HERRING PSC AND DISTRIBUTION

DIANA STRAM AND MICHAEL FEY, JUNE 10, 2020



HERRING SAVINGS AREAS IMPLEMENTED 1991 (AMD16A)

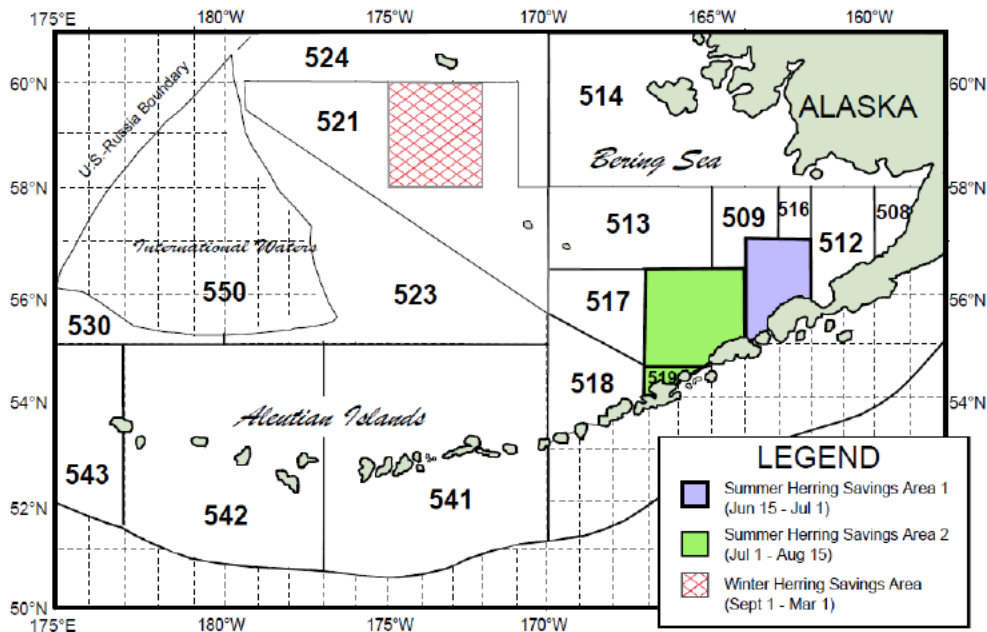


Figure 4 to Part 679. BSAI Herring Savings Areas
a. Map.

- Summer HSA1 June 15- July 1
- Summer HSA2 July 1- August 15
- Winter HAS Sept 1- March 1



ANNUAL HERRING PSC (MT) ALL SECTORS 2010-2020*

Year	PSC	Limit	Remaining	% Taken
2010	353	1,973	1,620	18%
2011	397	2,273	1,876	17%
2012	2,376	2,094	-282	113%
2013	988	2,648	1,660	37%
2014	187	2,179	1,992	9%
2015	1,529	2,742	1,213	56%
2016	1,494	2,630	1,136	57%
2017	1,023	2,013	990	51%
2018	540	1,830	1,290	30%
2019	1,183	2,547	1,364	46%
2020*	2,763	2,532	-231	109%
average	1,167	2,315	1,148	49%

*2020 data is as of May 24th 2020

Source: NMFS Alaska Region Catch Accounting System, data compiled by AKFIN in Comprehensive_PSC.



PSC (MT) POLLOCK FISHERY 2010-2020 (5/24/20) BY SEASON

Year	A season	B season	Total
2010	302	47	349
2011	2	375	377
2012	130	2,229	2,358
2013	0	959	959
2014	0	159	159
2015	417	1,070	1,487
2016	578	854	1,431
2017	262	702	964
2018	65	408	473
2019	210	892	1,102
2020	2,701	---	2,701



Year	CP PSC	CV PSC	Total
2010	293	8	302
2011	0	1	2
2012	127	3	130
2013	0	0	0
2014	0	0	0
2015	364	54	418
2016	370	209	578
2017	212	51	262
2018	24	41	65
2019	165	45	210
2020*	1,553	1,149	2,701

Source: NMFS Alaska Region Catch Accounting System, data compiled by AKFIN in Comprehensive_PSC.As of May 24, 2020

A SEASON
HERRING PSC
(MT) IN POLLOCK
TARGET BY CP/CV

HERRING PSC (MT) BY TARGET AND (LIMIT) 2010-2020*

Year	Pollock Pelagic Trawl fishery	Pollock/Atka Mackerel /Other TRW	Yellowfin Sole Trawl fishery	Pacific Cod Trawl fishery	Rock Sole / Flathead Sole / Other Flatfish Trawl fishery	Turbot / Sablefish / Arrowtooth Trawl fishery	Rockfish Trawl fishery	Total PSC
2010	186 (1,508)	163 (214)	3 (169)	0 (29)	1 (29)	0 (14)	0 (10)	353
2011	346 (1,737)	31 (247)	19 (195)	0 (33)	1 (33)	0 (16)	0 (12)	397
2012	2,167 (1,600)	186 (227)	16 (179)	6 (31)	1 (31)	0 (15)	0 (11)	2,376
2013	959 (2,165)	0 (200)	27 (180)	0 (40)	2 (30)	0 (20)	0 (13)	988
2014	151 (1,776)	8 (164)	25 (148)	1 (40)	1 (24)	0 (16)	0 (11)	187
2015	1,386 (2,242)	101 (207)	31 (187)	2 (42)	9 (30)	0 (20)	0 (14)	1,529
2016	1,425 (2,151)	7 (199)	33 (179)	2 (40)	27 (29)	0 (19)	0 (13)	1,494
2017	957 (1,800)	8 (50)	34 (100)	0 (10)	23 (43)	0 (5)	0 (5)	1,023
2018	307 (1,662)	166 (30)	48 (80)	3 (9)	17 (39)	0 (5)	0 (5)	540
2019	1,082 (2,313)	22 (42)	59 (111)	0 (13)	19 (54)	0 (7)	1 (7)	1,183
2020	2,819 (2,299)	43 (42)	48 (110)	0 (13)	16 (54)	1 (7)	0 (7)	2,928

Source: NMFS Alaska Region Catch Accounting System, data compiled by AKFIN in Comprehensive_PSC. 5/31/20

Herring (includes CDQ fisheries)

Trawl Gear

Seasons	Account	Units	Total Catch	Limit	Remaining	% Taken
	Pacific Cod	MT	0	13	13	1%
	Pollock Pelagic	MT	2,819	2,299	-520	123%
	Pollock, Atka Mackerel, Other Species	MT	43	42	-1	102%
	Rock Sole, Flathead Sole, Other Flatfish	MT	16	54	38	30%
	Rockfish	MT	0	7	7	0%
	Turbot, Arrowtooth, Kamchatka, Sablefish	MT	1	7	6	15%
	Yellowfin Sole	MT	48	110	62	44%
Total:			2,928	2,532	-396	116%

**HERRING PSC ALLOWANCES
BY TARGET APPORTIONMENT
AND ACCRUAL (2020)**

**(SOURCE NMFS AKRC CATCH
ACCOUNTING REPORT)**

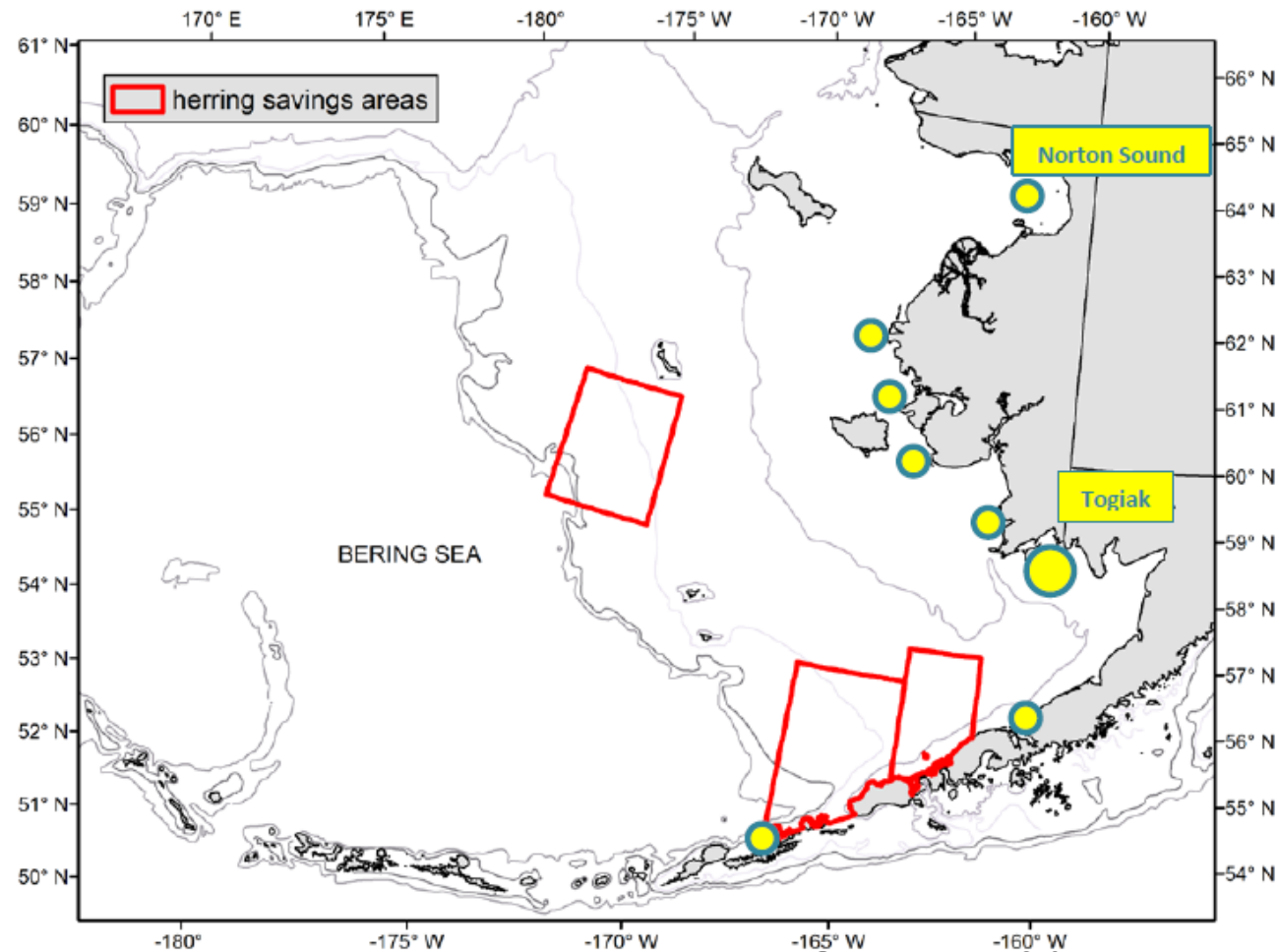
Report run on: June 04, 2020 4:10 AM

SPAWNING STOCKS INCLUDED IN OVERALL BIOMASS ESTIMATE FOR PSC LIMIT PSC LIMIT = 1% OF TOTAL HERRING BIOMASS ESTIMATE (MT)

Spawning area	2012	2013	2014	2015	2016	2017	2018	2019	2020
Norton Sound	39,396	48,035	47,299	48,794	48,794	31,007	31,007	31,007	31,007
Cape Romanzof	4,349	4,349	2,634	4,366	4,366	4,678	4,678	3,300	3,300
Nunivak Island	2,612	2,612	2,068	5,132	140	3,540	3,540	4,464	4,464
Nelson Island	4,267	4,266	3,882	27,422	27,422	4,785	4,785	4,916	4,916
Cape Avinof	1,901	1,901	1,200	9,456	9,456	3,126	3,126	1,890	1,890
Goodnews Bay	29,944	29,944	7,116	16,812	8,263	4,724	4,724	4,724	4,724
Security Cove	11,061	18,144	7,852	11,681	8,540	4,781	4,781	4,762	4,762
Togiak	112,260	152,169	142,834	148,306	147,185	142,453	124,062	197,355	195,793
Port Moller/Port Heiden	3,629	3,382	2,268	2,268	8,932	2,184	2,268	2,291	2,350
Total	209,419	264,802	217,153	274,236	263,098	201,278	182,971	254,709	253,207



HERRING SAVINGS AREAS AND LOCATIONS OF HERRING FISHERIES



From Ormseth, 2015



EBS HERRING MIGRATION PATTERNS (FROM TOJO ET AL. 2007)

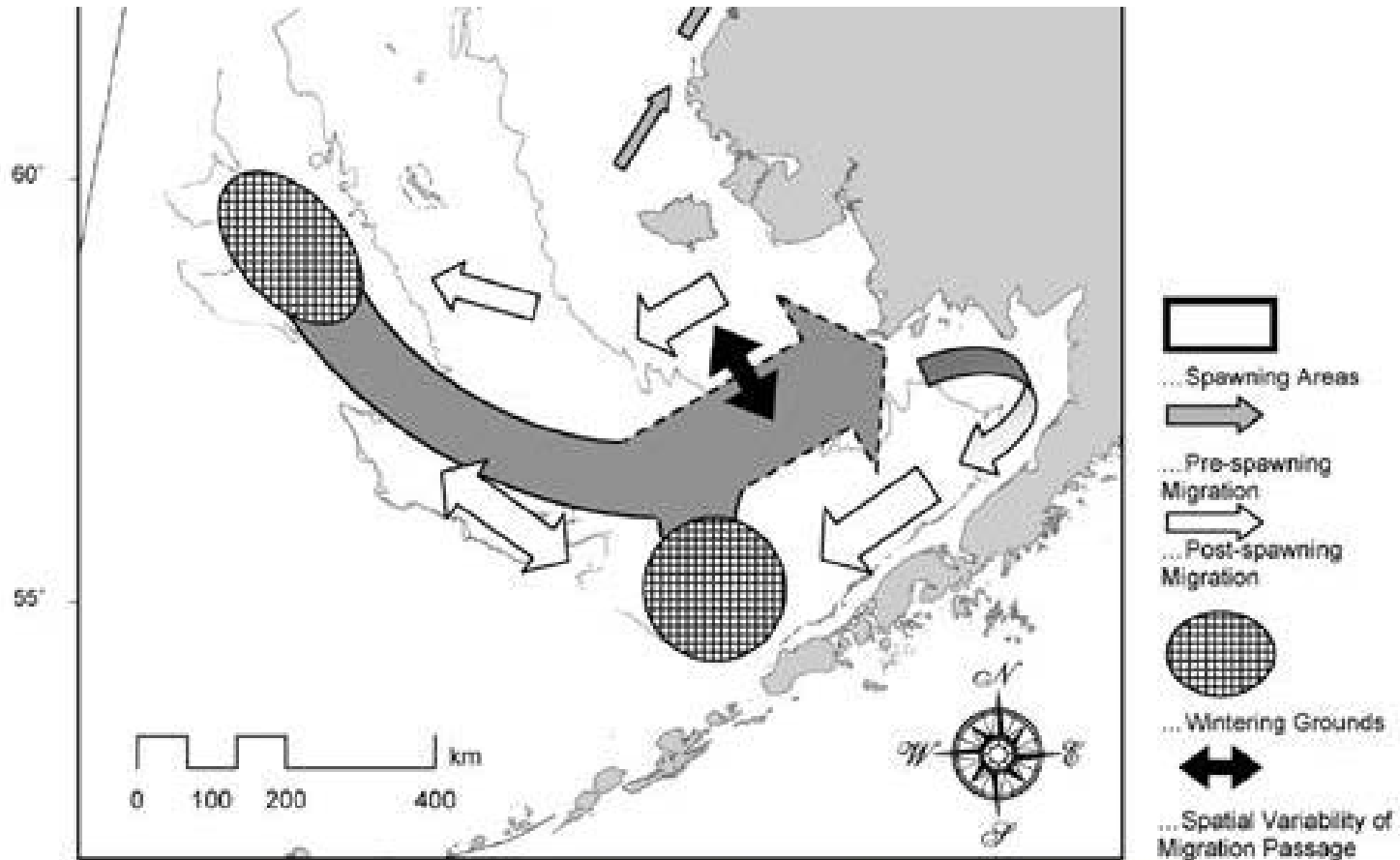
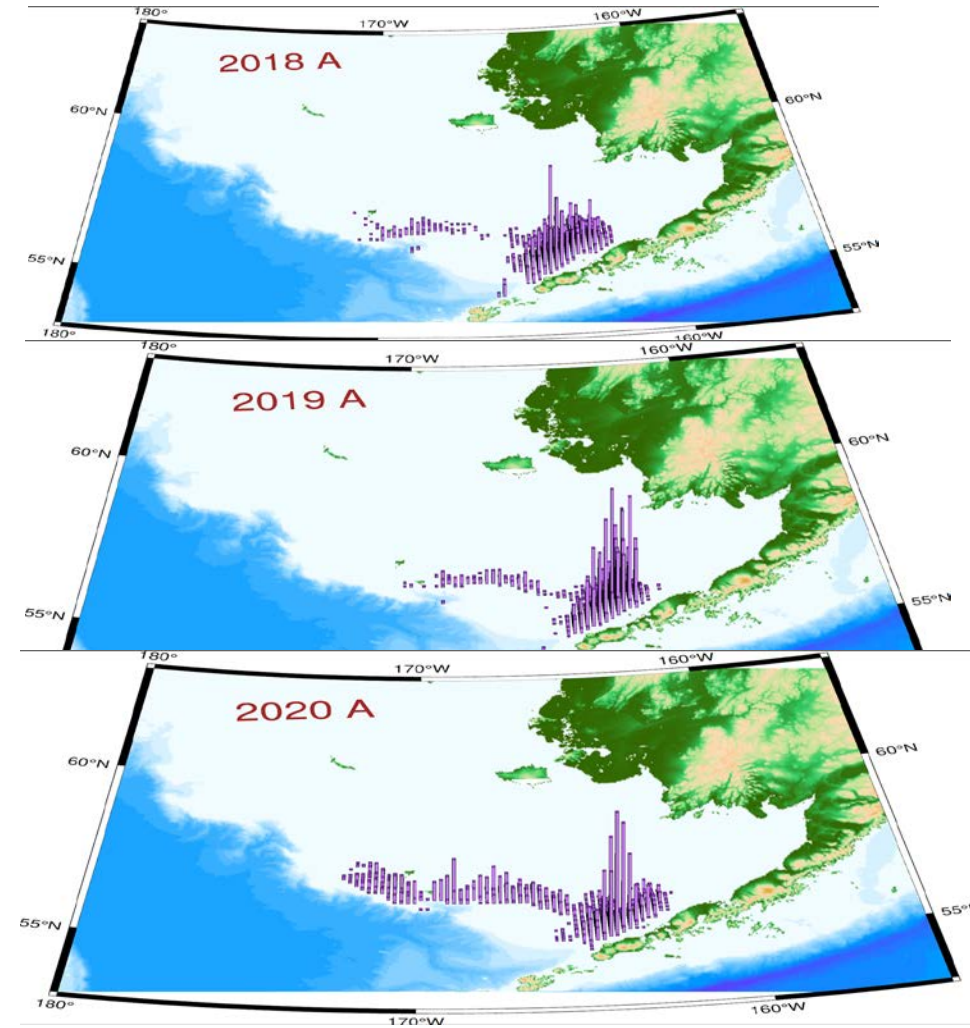
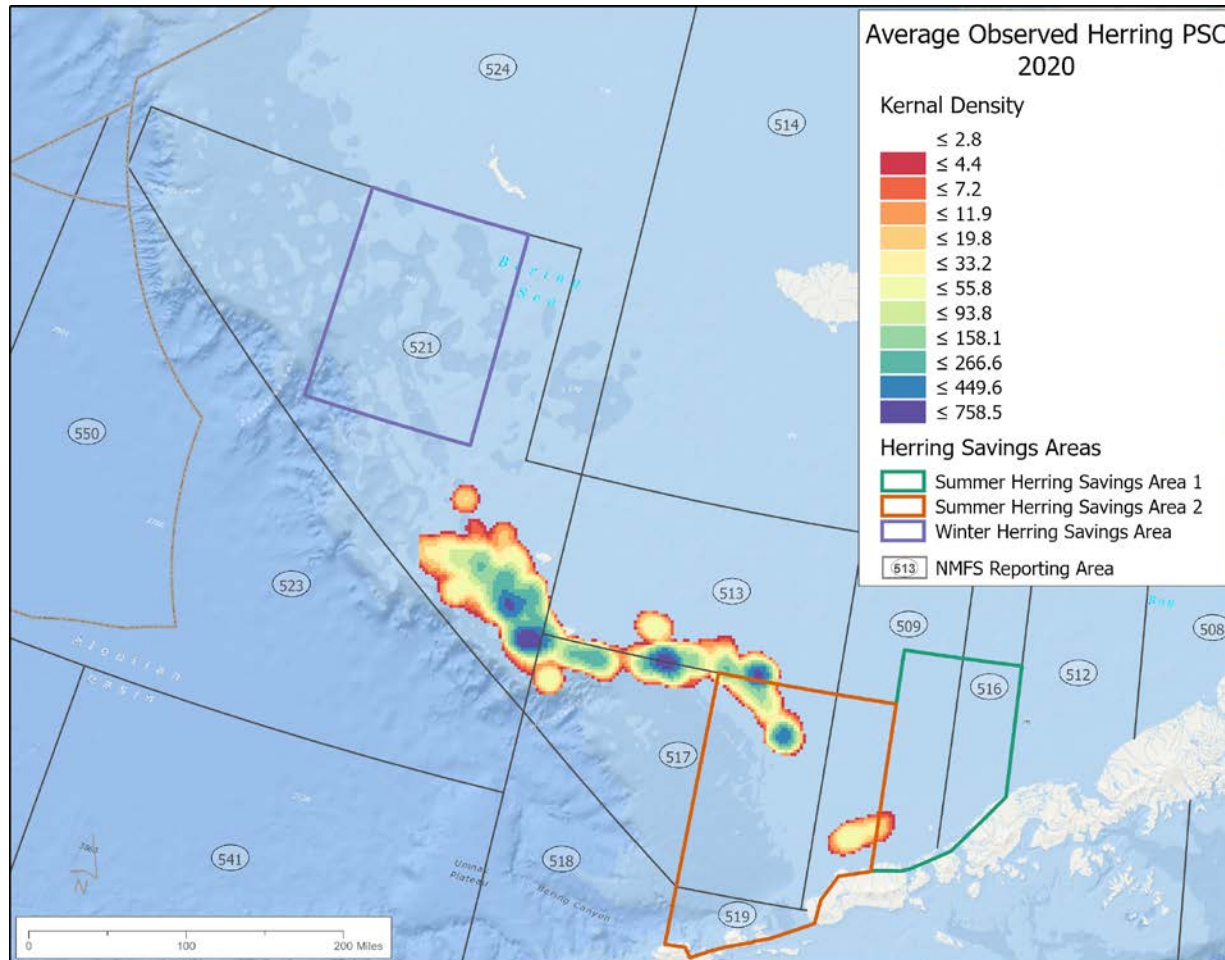


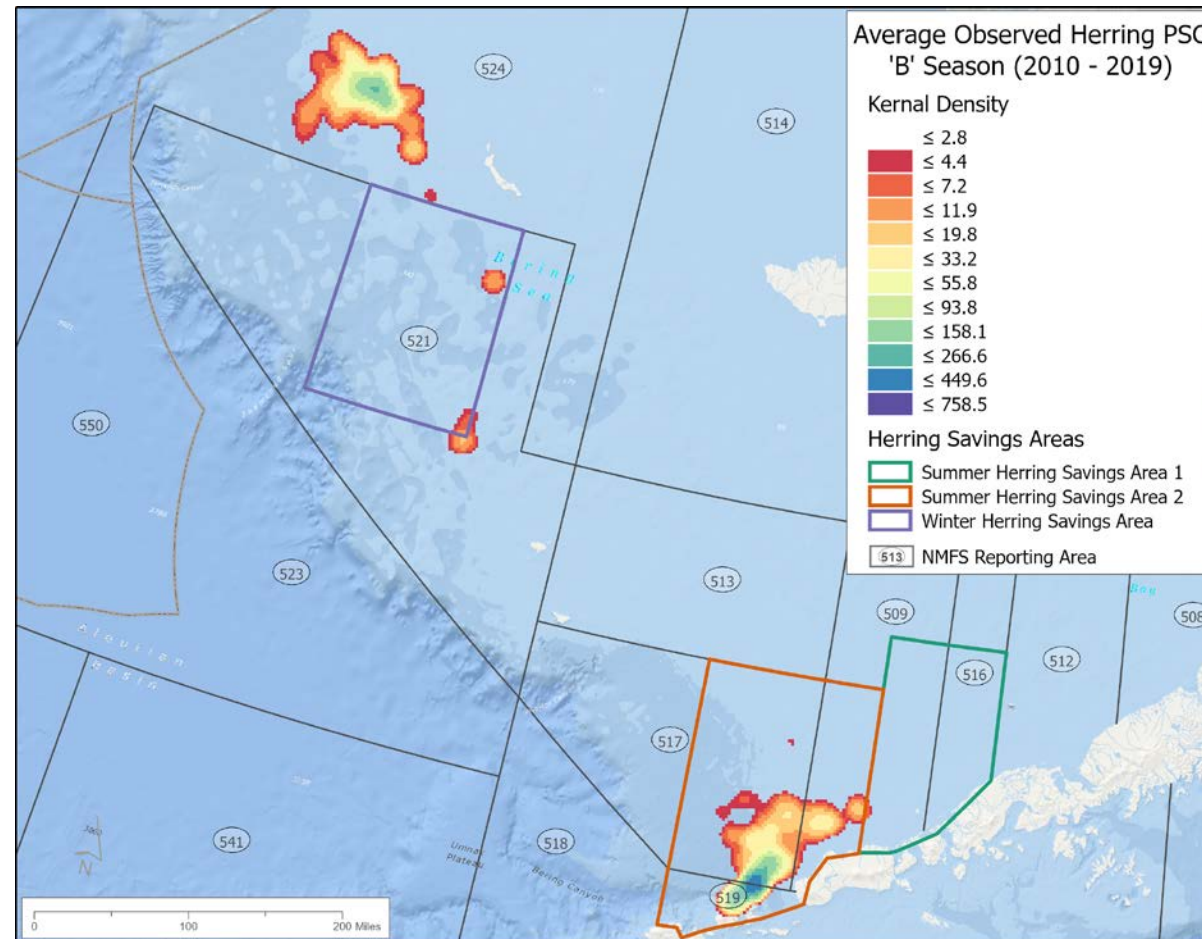
Fig. 6. Revised eastern Bering Sea (EBS) herring migration pattern and spatial variability in pre-spawning migration. The gray lines are the 50-, 100-, and 200-m isobaths. Thick rectangles show historical spawning locations. The two gridded circles represent the major wintering grounds. The gray boxed arrows show pre-spawning movements, and the open boxed arrows show post-spawning movements.



OBSERVED HERRING PSC A SEASON 2020



OBSERVED HERRING PSC B SEASON 2010-2019



QUESTIONS?

Presentation prepared with input from:

- *Michael Fey and PSMFC staff*
- *Sherri Dressel ADF&G*
- *Jim Ianelli, AFSC*

DIANA STRAM

DIANA.STRAM@NOAA.GOV

907-271-2809