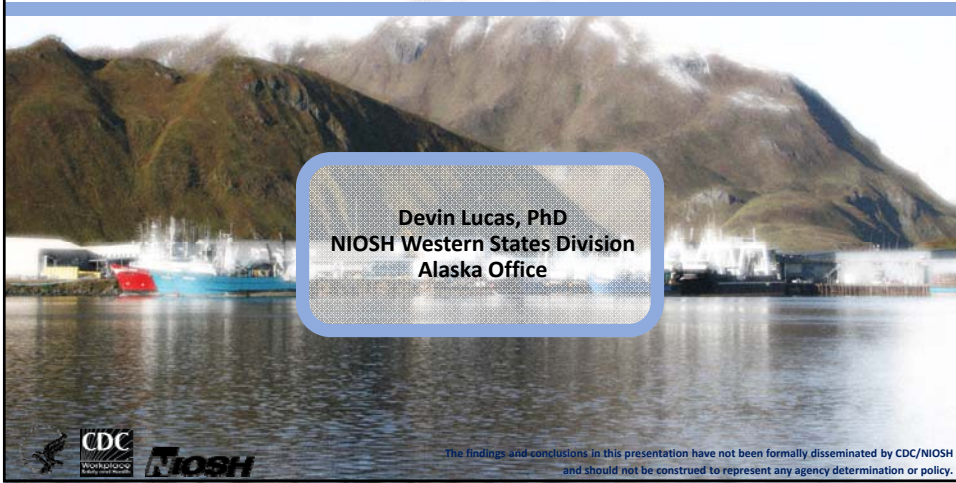


# Assessment of Safety in the BSAI Crab Fleet



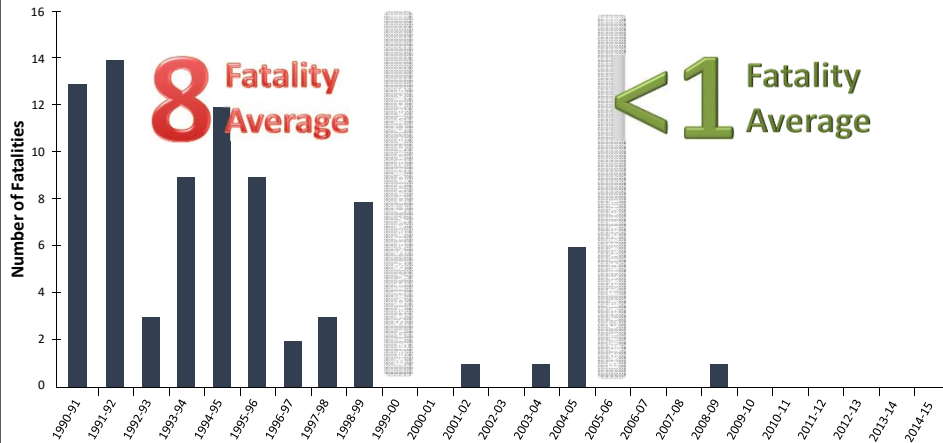


## National Standard 10

- This study satisfies NS10 for crab rationalization
- Fisheries management shall “promote the safety of human life at sea”
- This hazard assessment study is an example of the methodology described in the new **NOAA Tech Memo NMFS-OSF-2 “Guidance on Fishing Vessel Risk Assessments and Accounting for Safety at Sea in Fishery Management Design”**



## BSAI Crab Fleet Fatalities, 1990/91 – 2014/15





Study of reported marine casualties, BSAI crab fleet, 2005/06 – 2012/13 (8 seasons)



**Personnel Casualties**  
(Crewmember fatalities and injuries)



**Vessel Casualties**  
(Vessel disasters, loss of propulsion, fire, loss of steering, grounding, etc)



Marine Casualty Reported to Coast Guard

Coast Guard Investigates

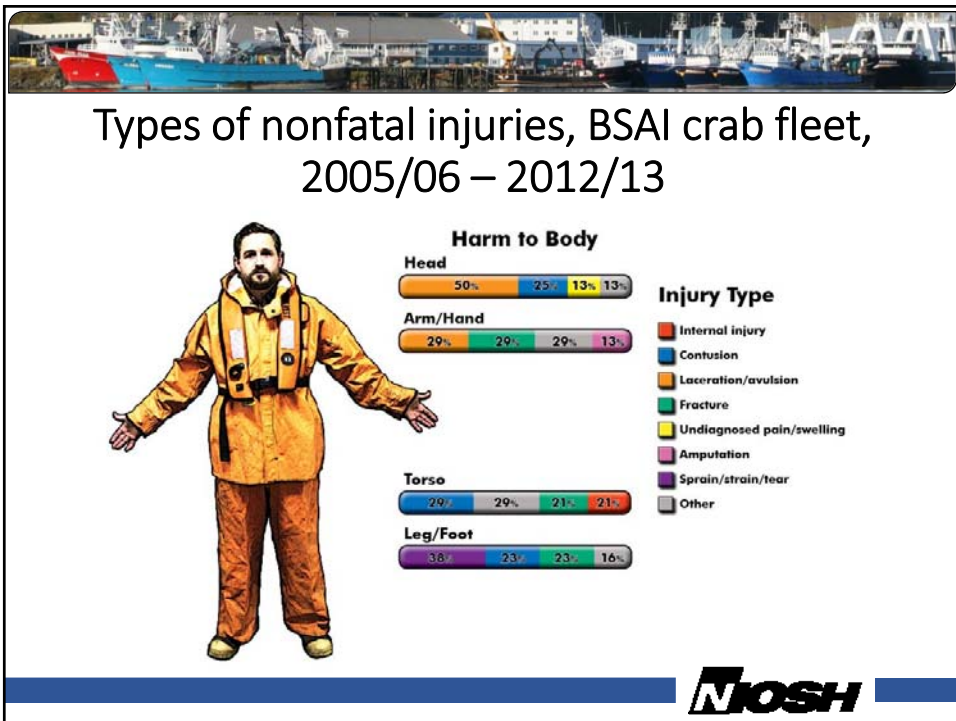
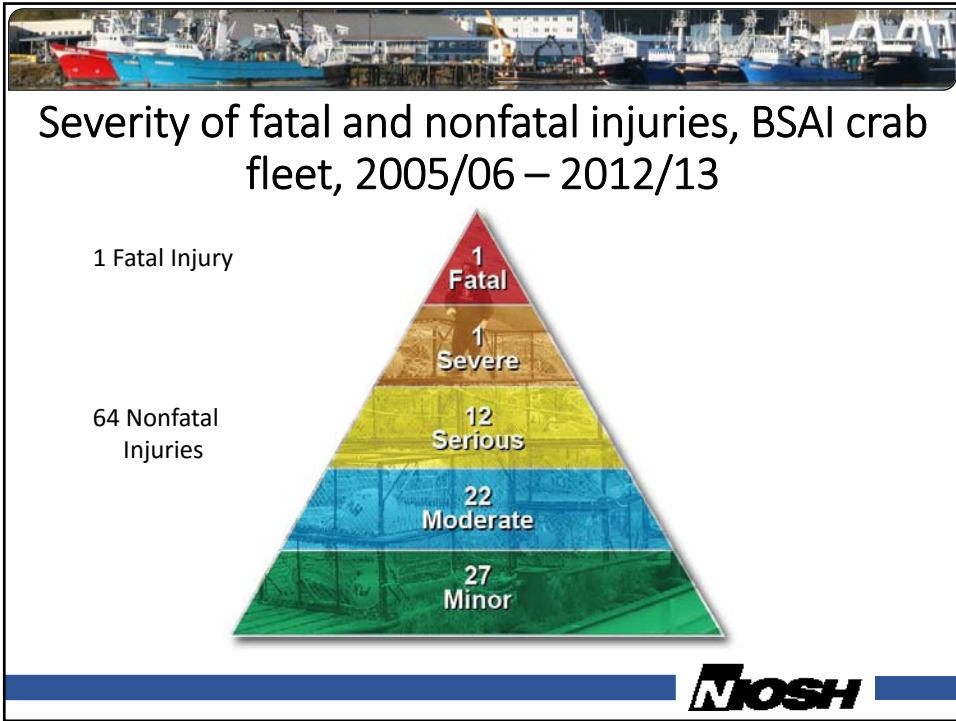
NIOSH collects information and enters into database





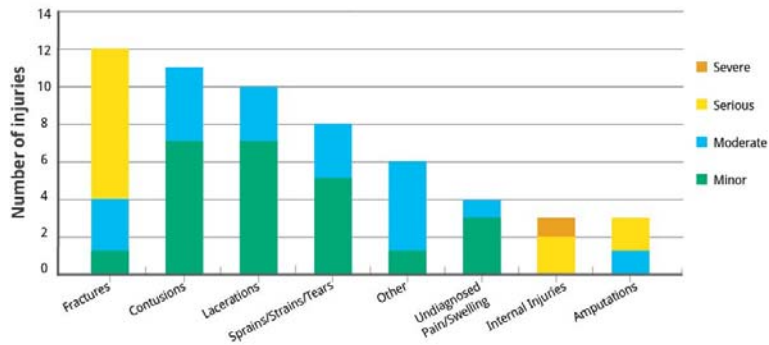




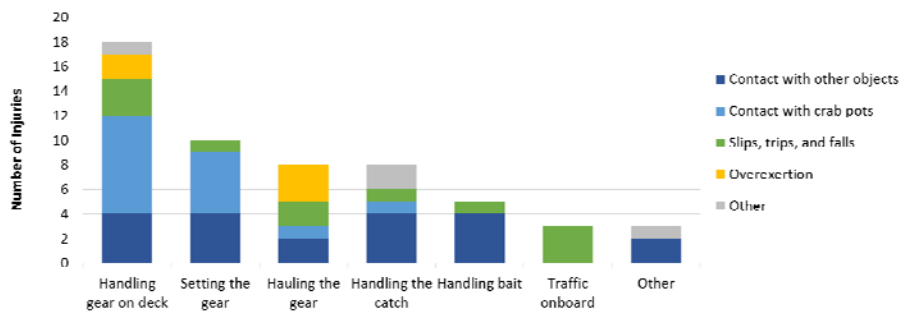




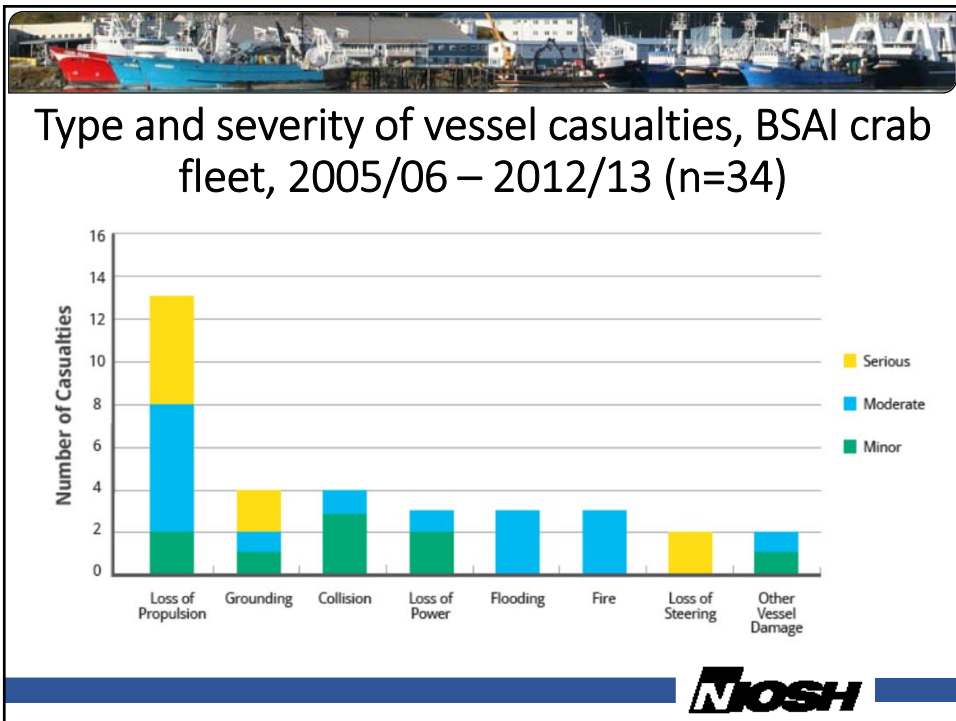
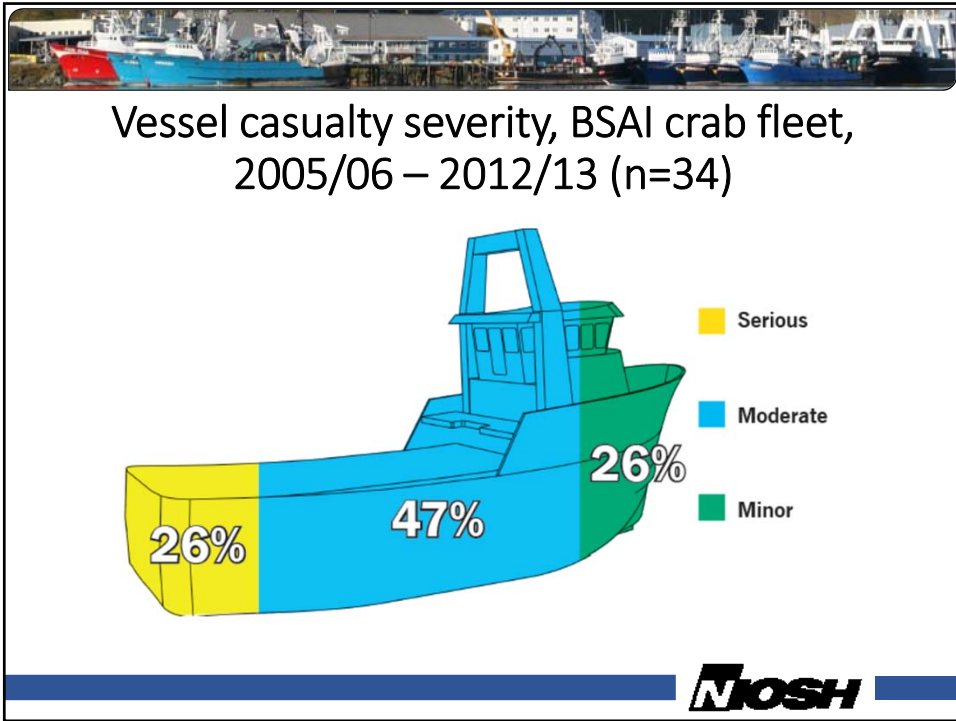
### Types and severity of nonfatal injuries, BSAI crab fleet, 2005/06 – 2012/13

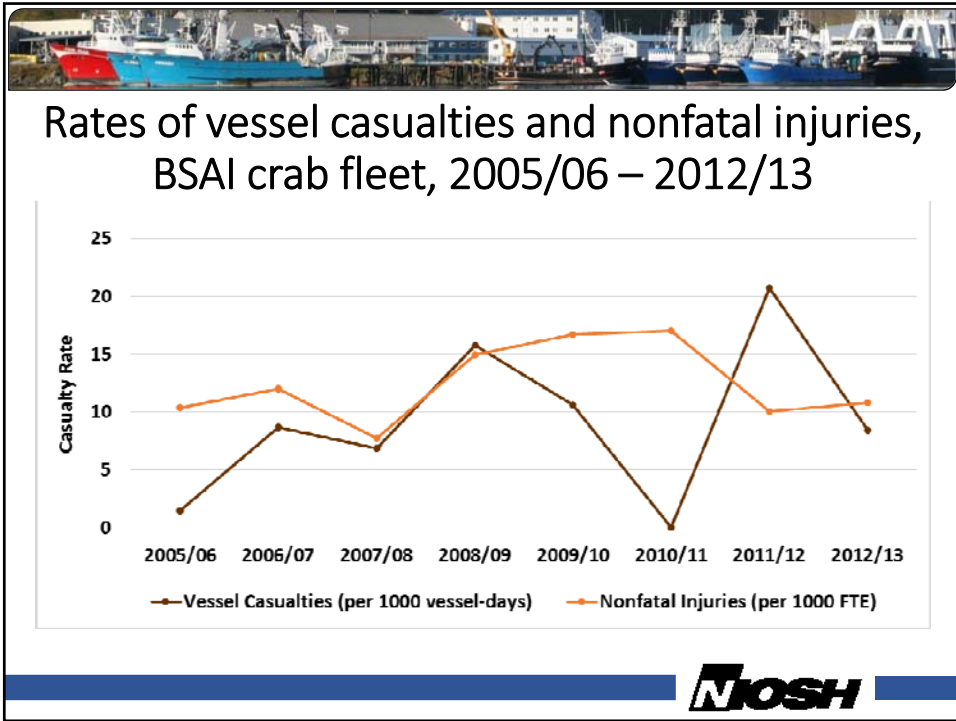


### Job tasks and events causing nonfatal injuries, BSAI crab fleet, 2005/06 – 2012/13









- 
- ### To prevent **vessel disasters** and other serious vessel casualties
1. Participate in the USCG “At-the-Dock Stability and Safety Compliance Check” program prior to each crab season.
  2. Periodically consult a naval architect to refresh knowledge of safe loading limits and adhere to stability instructions.
  3. Update and formalize maintenance procedures for propulsion, power, steering, and other critical systems, and closely follow the established schedule.
  4. All crewmembers should take an 8-hour marine safety class at least every five years to maintain the skills needed in an emergency.



### To prevent fatal **falls overboard**

1. Create or update PFD policies to require all crewmembers to wear PFDs at all times while on deck.
2. Increase the effectiveness of man overboard training and drills.
3. Add effective recovery devices and utilize the devices during monthly man overboard drills.

**PFD Policy**  
A work vest or other flotation device approved by the Captain must be worn when:

- on deck
- embarking & disembarking
- during hazardous conditions
- in a skiff

**WEAR IT!**



### To prevent injuries sustained **onboard the vessel:**

1. Review and adjust procedures for securing and moving pots.
2. Conduct periodic training with crewmembers on deck safety.
3. Inspect the deck and other walking surfaces to identify and eliminate slippery areas.
4. Inspect guards on machinery including bait choppers, cranes, and winches; and repair or replace deficient or missing guards.
5. Keep all vessel equipment maintained regularly per manufacturers' guidelines.





# THANK YOU

Devin Lucas, PhD  
NIOSH Western States Division, Alaska Office  
dlucas@cdc.gov  
907-271-2386

[www.cdc.gov/niosh/topics/fishing](http://www.cdc.gov/niosh/topics/fishing)

 @NIOSHFishing

