



**NOAA
FISHERIES**

**Alaska
Fisheries
Science
Center**

Economic Status of the Groundfish Fisheries off Alaska, 2017

Presented by:

Ben Fissel
AFSC Economics and Social
Sciences Research Program (ESSRP)

Nov. 13, 2018

Structure of the Economic SAFE

Economic Status Report, 2017: Core Content of the Nov. Draft

- Executive Summary: 2017 highlights
 - Report Card Metrics
 - Plan Team Reports (forthcoming)
- Overview of the Economic Data Tables
- Economic Data Tables
 - All Alaska summary Tables (1-9)
 - BSAI data Tables (10-25)
 - GOA data Tables (26-41)
 - Halibut data Tables (H1-H10).

Tables primarily cover: Retained catch, ex-vessel value and prices, first-wholesale production and prices, vessel counts, and fishing and crew weeks.

Economic Status Report, 2017: Draft Content (Nov.)



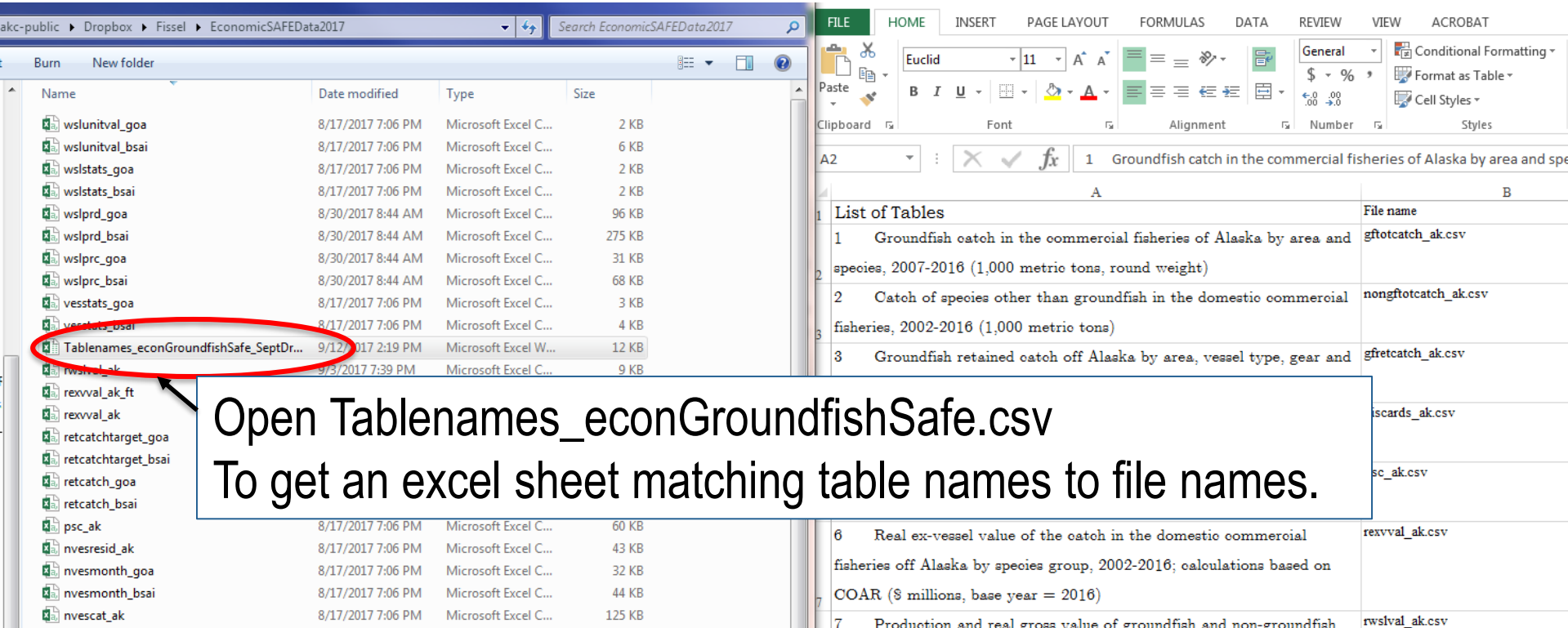
NOAA
FISHERIES

- Economic Performance Indices
- Wholesale and **ex-vessel (new)** price projections
- Market Profiles (forthcoming)
- Catch share performance metrics (forthcoming)
- Amendment 80 Economic Data Report
- **Gulf Trawl Economic Data Report (next year)**
- Amendment 91 Economic Data Report
- **Communities Section (revised)**
- Recent and ongoing ESSRP research and publications (forthcoming)

New, revised or planned content in **RED**

Where to find the data I need?

\\nmfs\akc-public\Dropbox\Fissel\EconomicSAFEData2018



Open Tablenames_econGroundfishSafe.csv
To get an excel sheet matching table names to file names.

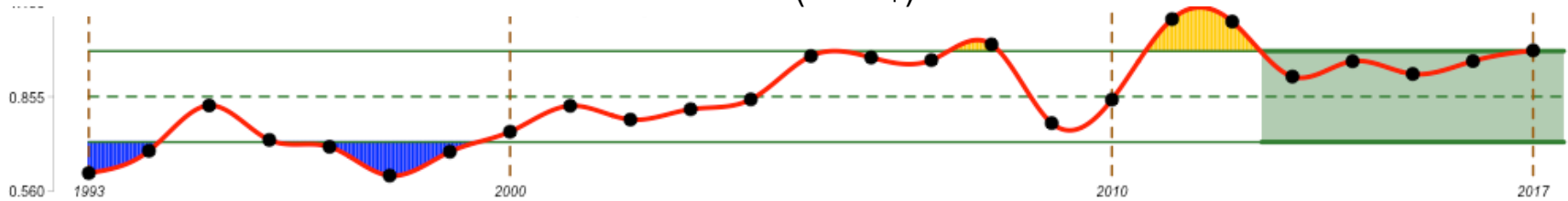
| | A | B |
|---|---|----------------------|
| 1 | List of Tables | File name |
| 1 | Groundfish catch in the commercial fisheries of Alaska by area and species, 2007-2016 (1,000 metric tons, round weight) | gftotcatch_ak.csv |
| 2 | Catch of species other than groundfish in the domestic commercial fisheries, 2002-2016 (1,000 metric tons) | nongftotcatch_ak.csv |
| 3 | Groundfish retained catch off Alaska by area, vessel type, gear and | gftretcatch_ak.csv |
| 6 | Real ex-vessel value of the catch in the domestic commercial fisheries off Alaska by species group, 2002-2016; calculations based on COAR (\$ millions, base year = 2016) | rexvval_ak.csv |
| 7 | Production and real gross value of groundfish and non-groundfish | rwsval_ak.csv |

Only accessible to AFSC.
The data accessible through the website soon.

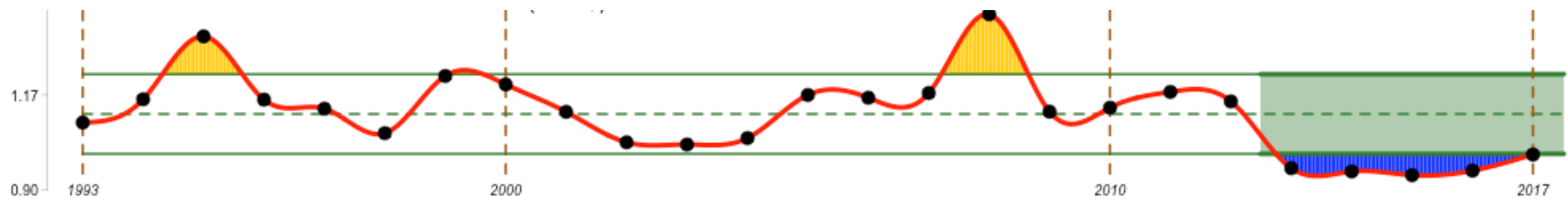
Status and Trends

Report Card Indices

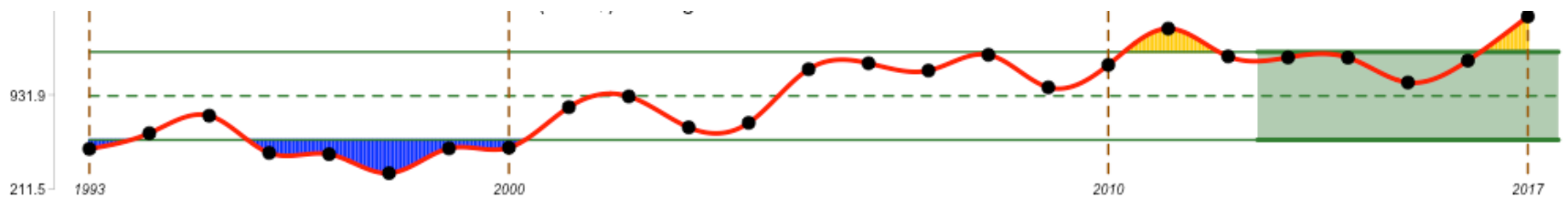
FMP Groundfish real first-wholesale revenue (2017\$) index



FMP Groundfish real first-wholesale price (2017\$) index

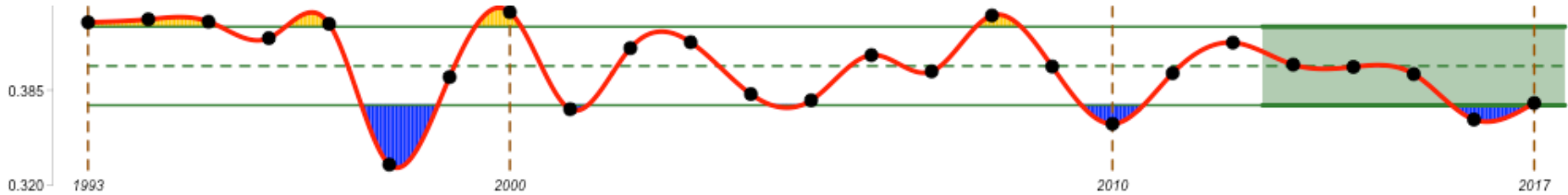


FMP Groundfish real first-wholesale revenue (2017\$)/fishing weeks

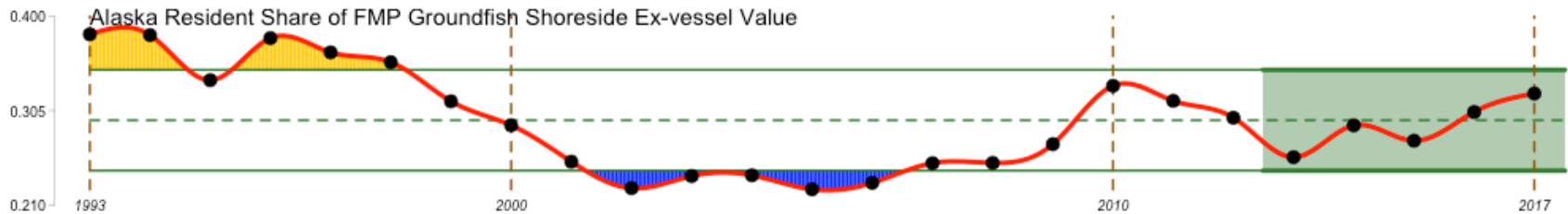


Report Card Indices

FMP groundfish ex-vessel share of first-wholesale revenue

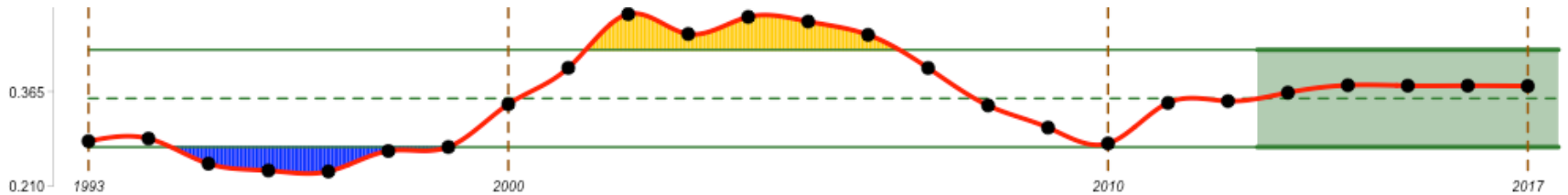


Alaska resident share of FMP groundfish shoreside ex-vessel value

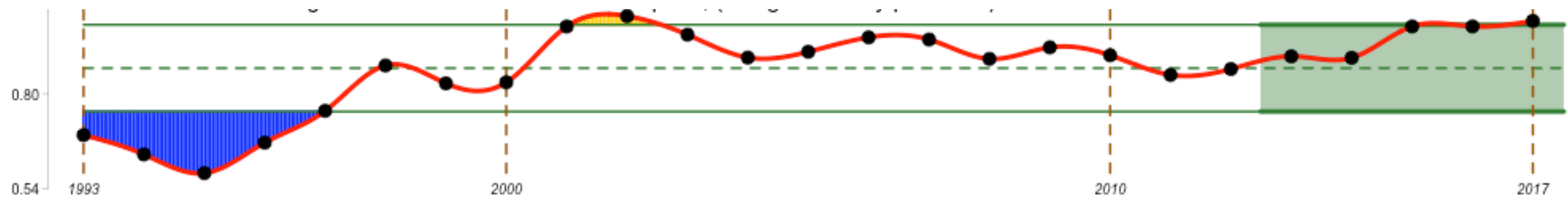


Report Card Indices

Alaska's effective share of pollock and cod global catch



Effective real exchange rate index for AK fisheries exports (foreign currency per dollar)



Alaska's Groundfish Fisheries in 2017

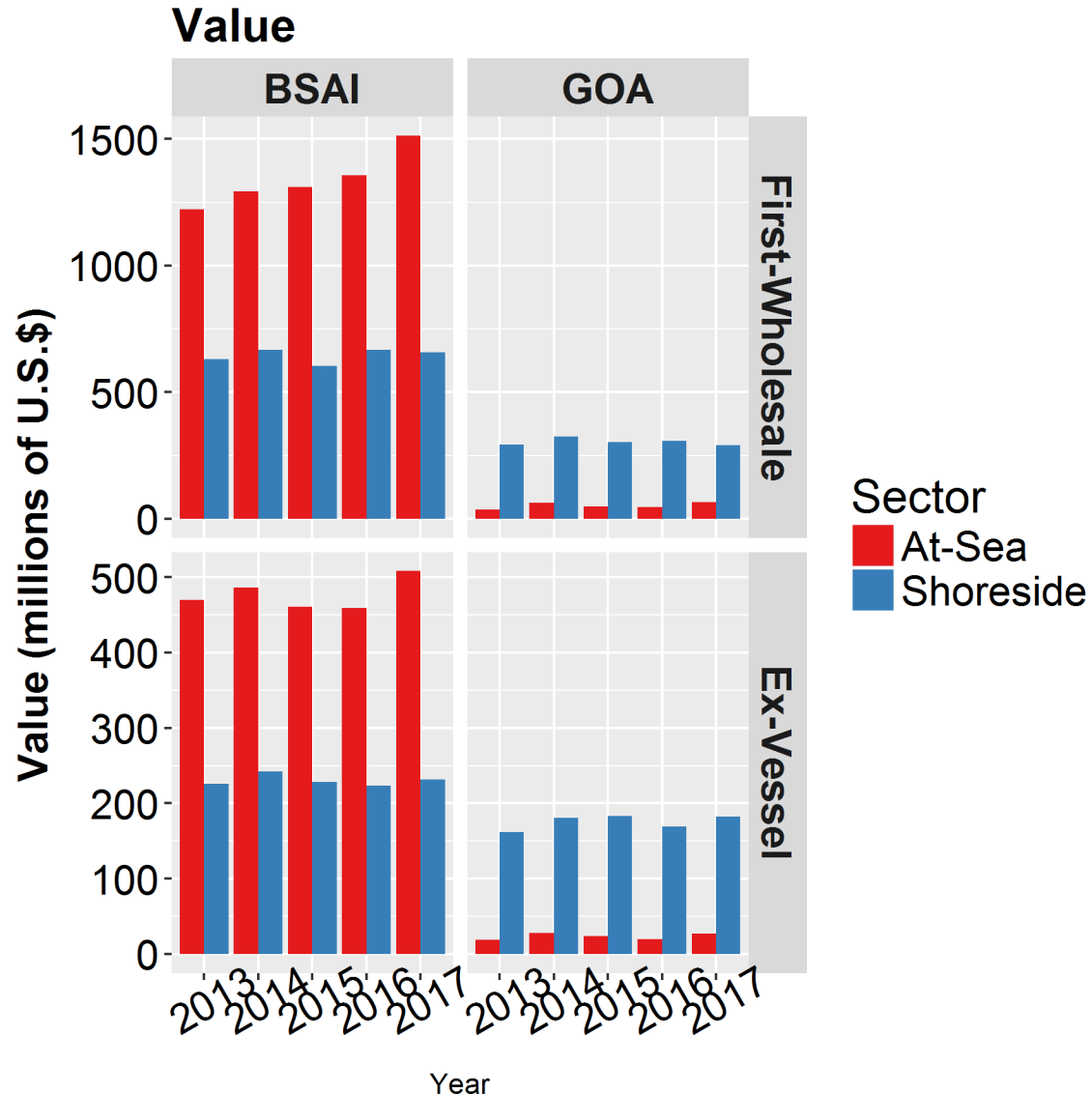
Total catch: 2.3 million t
(decrease < 1%)

Value increasing or stable across most regions and sectors.

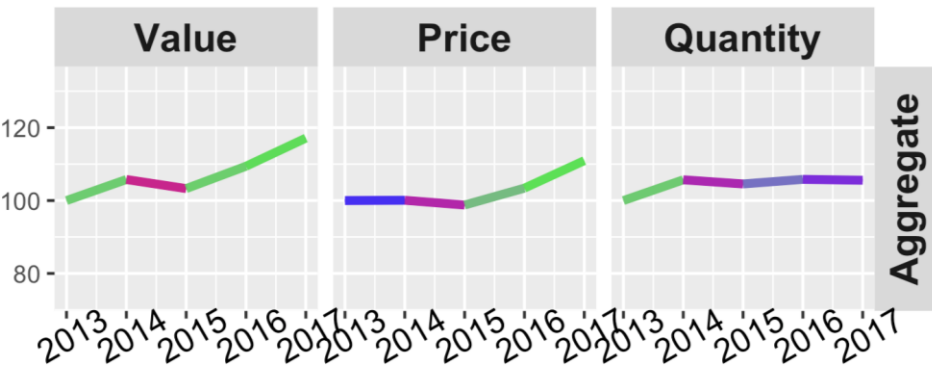
Wholesale value:
\$2.52 billion (up 4%)

Ex-vessel value:
\$947 million (up 7%)

Percent change adjusted for inflation.



BSAI First-Wholesale Economic Indices

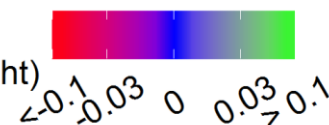


Species

- Value stable:
 - Pollock
- Value increased:
 - Atka mackerel
 - Pacific cod
 - Flatfish
 - Rockfish

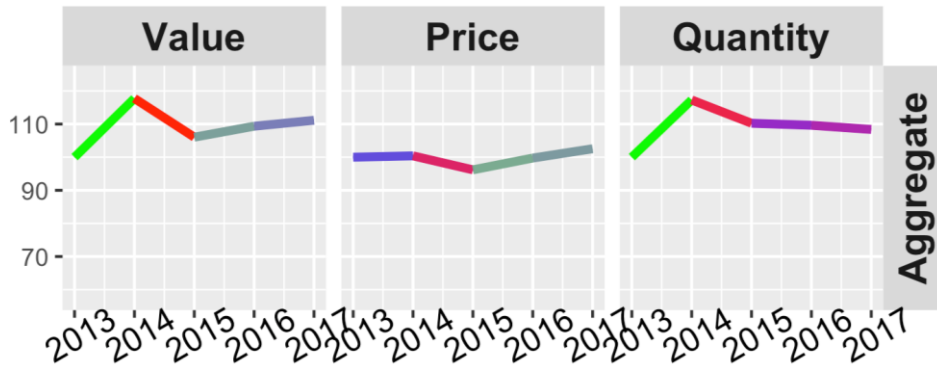


(yr-on-yr % change)*(share weight)



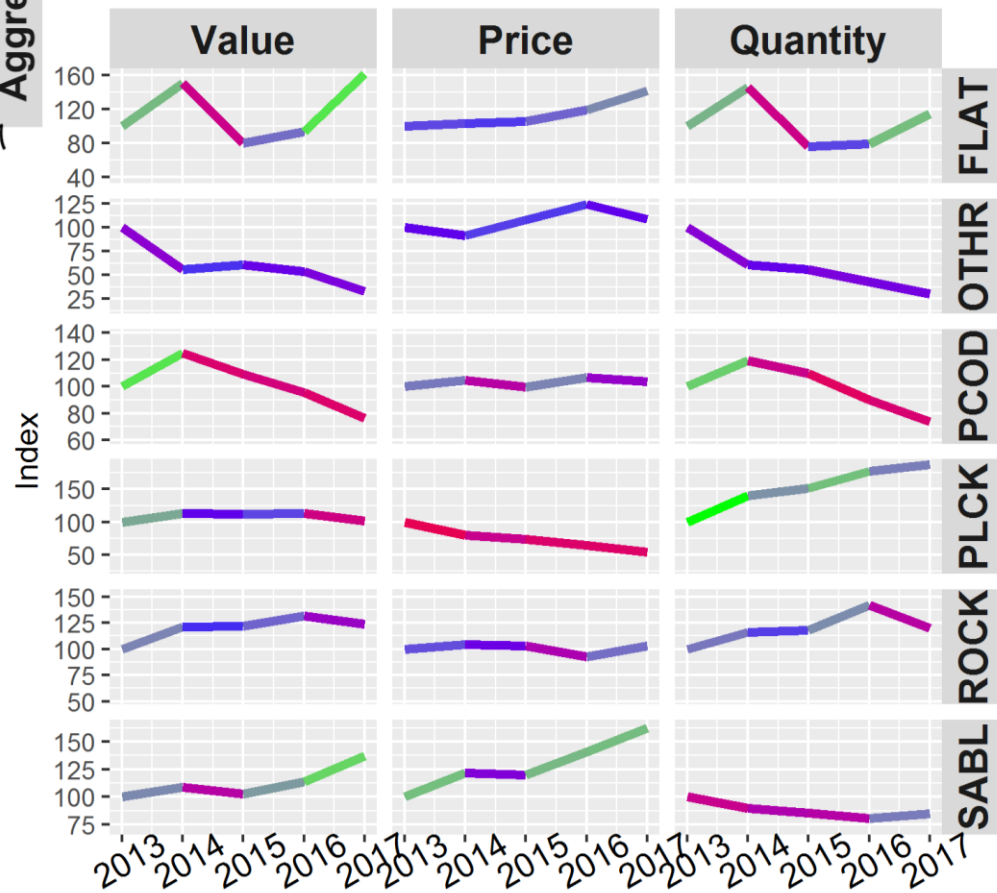
Indices are nominal (not adjusted for inflation)

GOA First-Wholesale Economic Indices



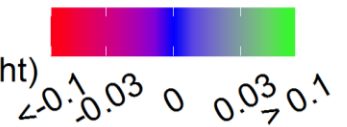
Species

- Value decreases:
 - Pacific cod
 - Pollock
 - Rockfish
- Value increased:
 - Sablefish
 - Flatfish



Indices are nominal (not adjusted for inflation)

$(\text{yr-on-yr \% change}) * (\text{share weight})$



New content

Community Participation



**NOAA
FISHERIES**

1) Quantifies engagement of communities in Alaska groundfish fisheries in terms of:

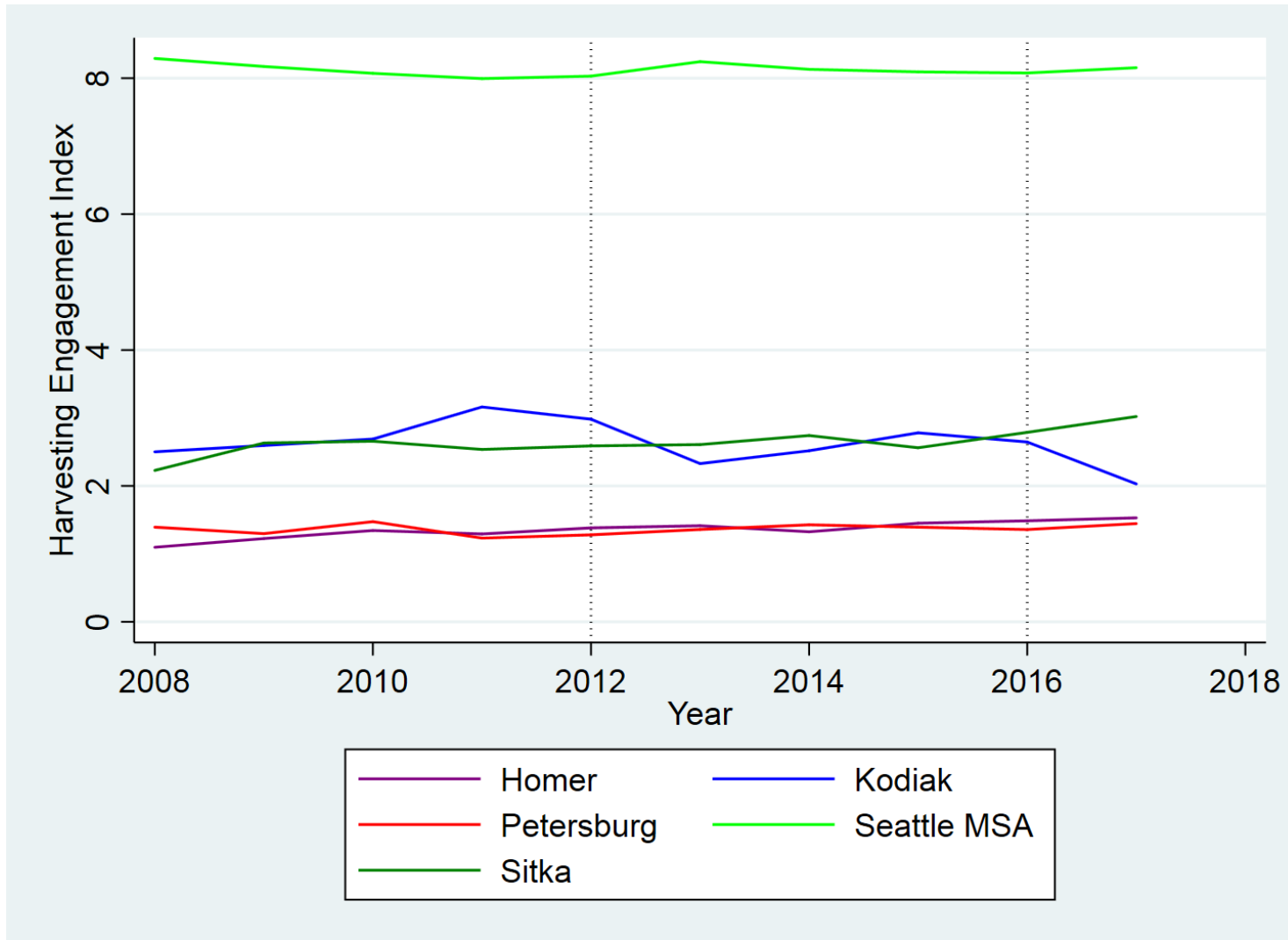
harvesting activity

processing activity

Using factor analysis and regional quotients based on value, volume, vessel participation and processing.

2) Provides individual profiles of highly engaged communities covering: Demographics, infrastructure, school enrollment, fishing history, and current economy.

Harvesting Engagement Indices



Demographics (self-identified, 2010 census) – All Communities

Kodiak Island

| | Akhiok | Chiniak CDP | Karluk | Kodiak City | Larsen Bay | Old Harbor | Ouzinkie | Port Lions |
|-----------------|----------|-------------|--------|-------------|---------------|------------|----------|------------|
| Population | 71 | 47 | 37 | 6,130 | 87 | 218 | 161 | 194 |
| AK. Native | 50.7% | 43.0% | 94.6% | 9.9% | 71.3% | 87.6% | 79.5% | 58.8% |
| Housing Units | 37 | 34 | 28 | 2133 | 70 | 121 | 1 | 1 |
| Med. Income | \$25,000 | N/A | N/A | \$67,571 | \$34,750 | \$37,667 | \$35,000 | \$54,375 |
| Poverty | 29.7% | N/A | 9.2% | 10.6% | 21.3% | 21.6% | 15.9% | 20.4% |
| Med. age | 32.3 | NA | 35.2 | 36.0 | 43.5 | 38.0 | 36.8 | 53.8 |
| High School Ed. | 94.7% | N/A | 70.8% | 87.8% | 73.0% | 75.0% | 73.3% | 87.3% |
| High School Ed. | 19 | 18 | 9 | 2,260 | Closed (2018) | 27 | 20 | 6 |

Harvest Engagement: **HIGH**

Processing Engagement: **HIGH**

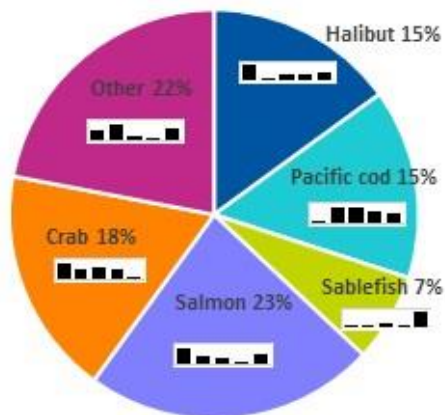
Coastal hazards: **TSUNAMIS, EARTHQUAKES**, storm surges, **EROSION**, Flooding, **VOLCANOES**.

**Bold indicates high hazard potential*

Native Tribes, Associations & Corporations

- Shoonaq' Tribe of Kodiak
- Koniag, Incorporated
- Kodiak Area Native Association
- Natives of Kodiak, Inc.

Kodiak Share of Revenue Landed by Species 2013-2017



Bar charts represent 2013 to 2017 ex-vessel values (2017\$) by species landed in the community. The scale of the y-axis is specific to the species.

Current Economy

Commercial fishing, seafood processing, and commercial fishing support services are the major industries contributing to the local economy.² The U.S. Coast Guard station and hospital are also significant employers. Other industries include retail services and government. Tourism is growing, and recreational fishing, hiking, and kayaking are increasing in popularity. Kodiak's economy is reliant on logging, fishing, ecotourism, and sport hunting and fishing.⁵ In 2017, Kodiak collected \$2.34 million in fisheries-related taxes, compared to \$5.27 in 2010 and \$3.63 million in 2000. The bulk of tax revenue (85%) comes from property taxes, reported as \$15.7 million in 2017. However, it should be noted that data related to port/dock usage fees are not available for 2017 or 2010. Since those fees accounted for a significant portion of fisheries-related revenue in previous years, it is likely that revenue figures are underrepresented.

Processing Engagement

High



**NOAA
FISHERIES**

Ex-vessel Price Projections

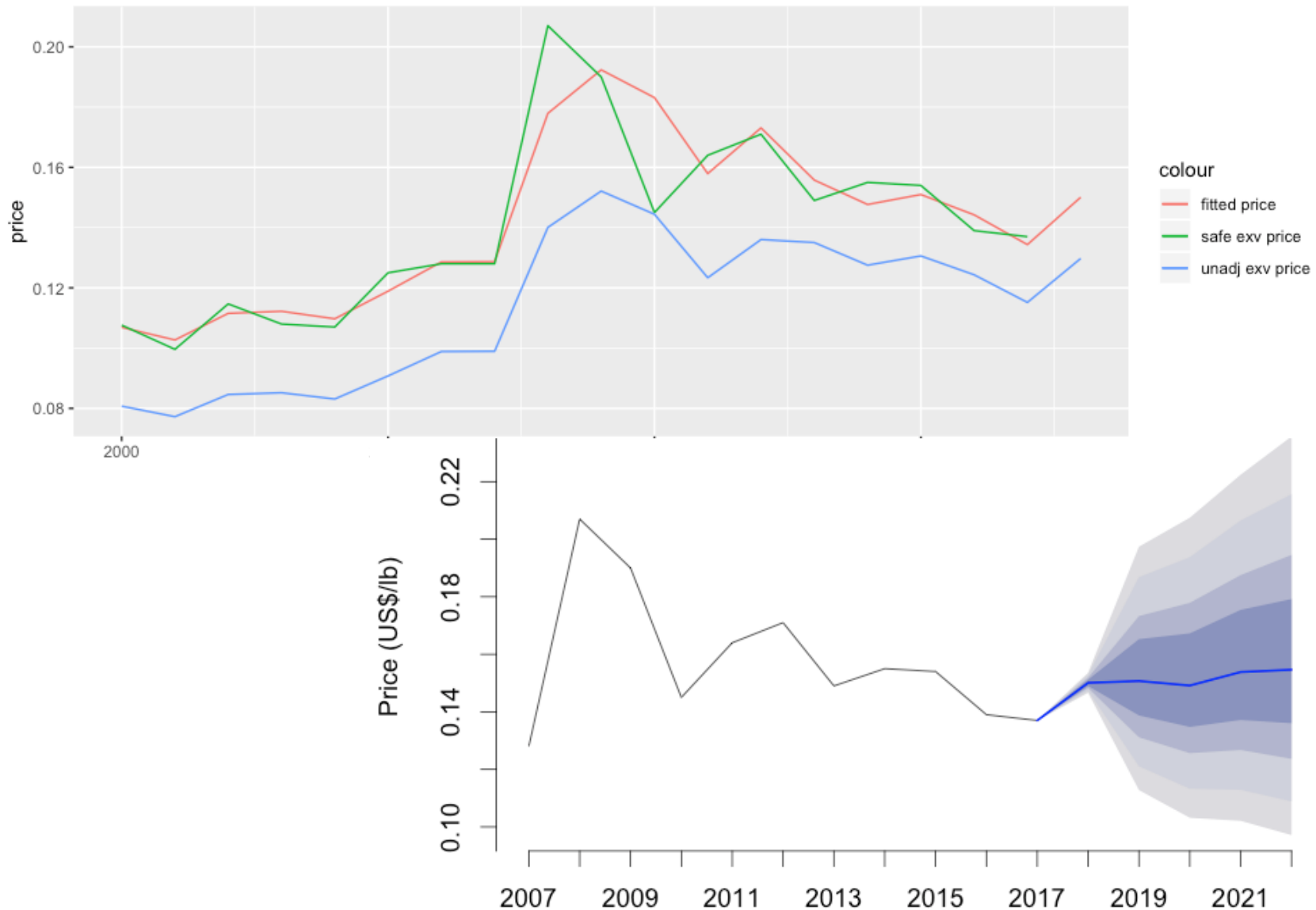
Uses unadjusted fish ticket information through Sept. 2018 to estimate an (adjusted) 2018 annual ex-vessel price.

Currently have seven estimates for:

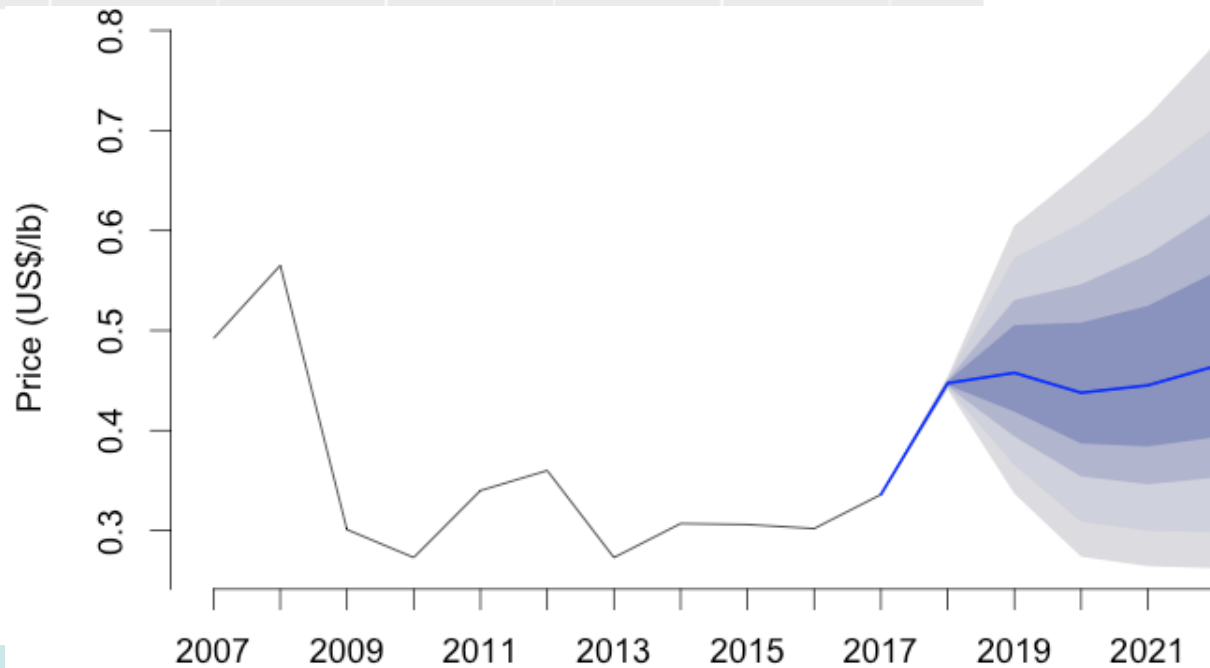
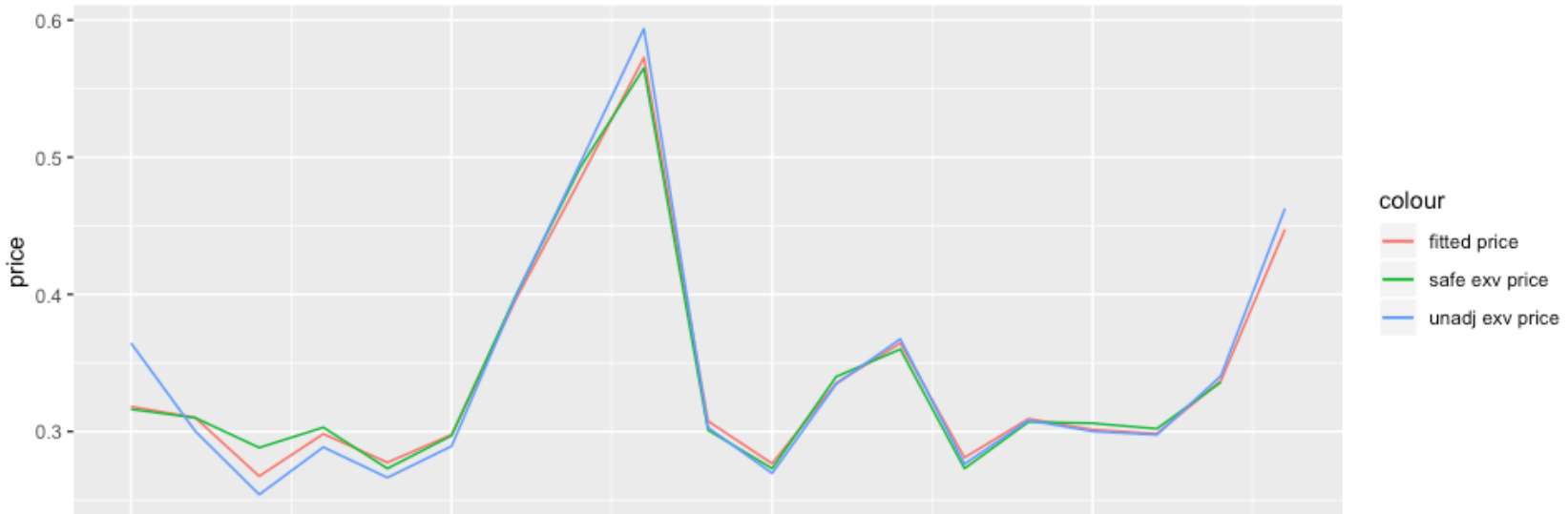
- BSAI & GOA pollock trawl
- BSAI & GOA Pacific cod trawl and fixed gear
- GOA sablefish fixed gear

Can be coupled with catch to provide ex-vessel revenue estimates.

BSAI pollock trawl ex-vessel price projections



GOA Pacific cod fixed ex-vessel price projections



GPT Species Economic Performance Report

- Economic Performance Reports:
 - BSAI: pollock, Pacific cod, flatfish complex (yellowfin sole, rock sole, flathead, arrowtooth) , rockfish (Pac. ocean perch, northern rockfish), Atka mackerel.
 - GOA: pollock, Pacific cod, flatfish (arrowtooth), rockfish (Pac. ocean perch, northern rockfish).
 - Combined: sablefish (ESP).
- GPT can give feedback/discuss:
 - Information appears to be getting used!
 - Content: Too much/not enough information? Report too long? Different information? Useful to you?



Economic Status Report, 2017



NOAA
FISHERIES

The Economic Status Report serves many purposes.
Among them is to provide information to the Plan Team.

Please give us your feedback.

- Ben.Fissel@noaa.gov