
C3 SCALLOP SAFE

SSC REVIEW

APRIL 2023

TYLER JACKSON , SARAH RHEINSMITH, SCOTT MILLER



SCALLOP PLAN TEAM

Tyler Jackson (ADF&G Kodiak) *Co-Chair*

Sarah Rheinsmith (NPFMC) *Co-Chair*

Ryan Burt (ADF&G Kodiak)

Mike Byerly (ADF&G Homer)

Scott Miller (NMFS Juneau)

Andrew Olson (ADF&G, Douglas)

Skylar Bayer (NMFS Juneau)

Vacant (ADF&G)



Special thanks to ...

Kendall Henry (ADF&G Juneau)

Alyssa Hopkins (ADF&G Kodiak)



TOPICS



- 2023 stock status
- 2022 dredge survey
 - Dredge transition
- Fishery update
- Retained-not-landed Meats
- Age Structured Model Development
- Council Motion
- Socioeconomics



STOCK STATUS

- Stock status is “**unknown**”
- As per FMP:
 - OFL = **1.284 million lb meats**
 - ABC = **1.156 million lb meats** (ABC control rule)
- Total removals suggest **overfishing did not occur** in 2021/22 or 2022/23
 - 2021/22 total removals = 311,978 lb meats
 - 2022/23 retained catch = 345,690 lb meats



2021 ADF&G DREDGE SURVEY

■ Kodiak Shelikof, Northeast and Kamishak Districts

Bed	Last Survey	Abundance $\geq 100\text{mm}$	Abundance $< 100\text{ mm}$	MW Biomass	MW:SH	MW:RW
KSHI	2020	↑	↑	↑	↓	↑
KNE1	2020	↓	↓	↑		
KNE2	2020	↑	↑	↑		
KNE3	2020	↑	↓	↑		
KNE5	2020	↓	↓	↓		
KNE6	2020	↑	↑	↑		
KNE (All)		↑	↓	↑	↔	↑
KAMN	2019	↑	↑	↓	↓	↓

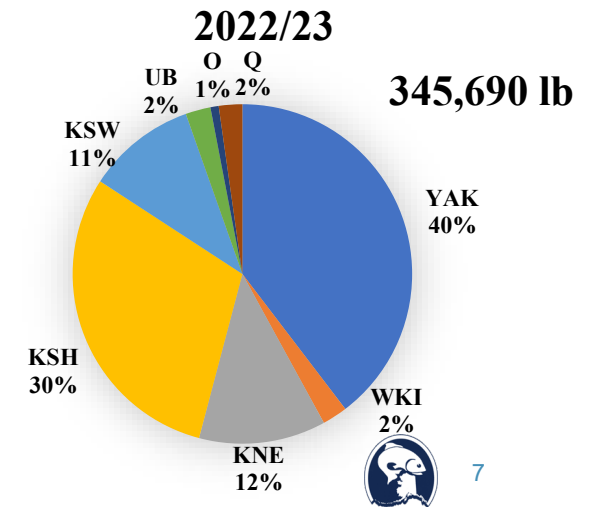
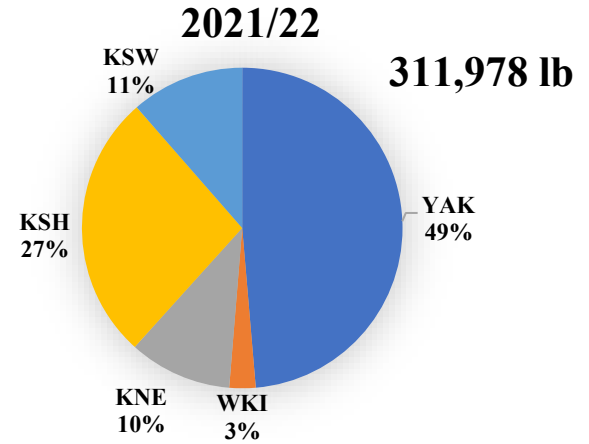
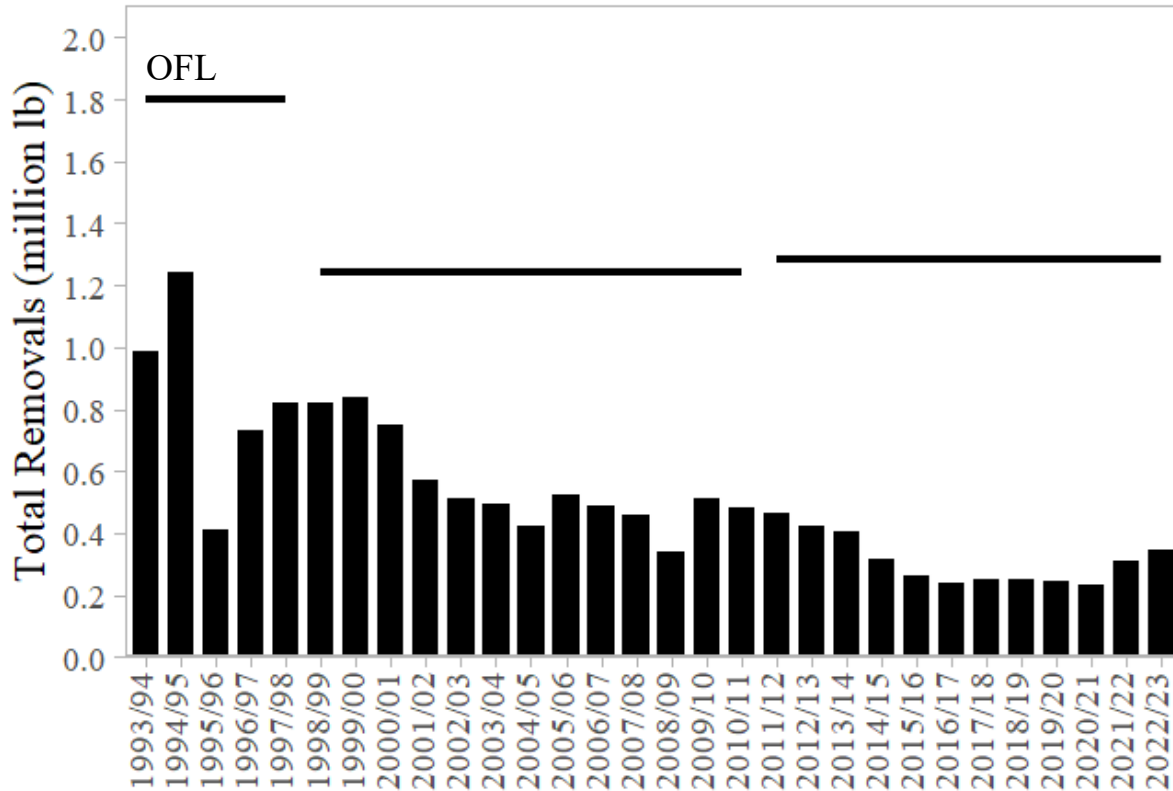


SURVEY DREDGE TRANSITION

- New survey dredges purchased
 - East coast manufactured
 - Documented and tested design
- 2022 survey troubleshooted towing parameters
- 2023 survey will collect systematic sxs samples



FISHERY MANAGEMENT UPDATE



RETAINED-NOT-LANDED MEATS

Retained-Not-Landed (RNL) meats are scallop meats that are not discarded as whole animals, but are not 'landed'

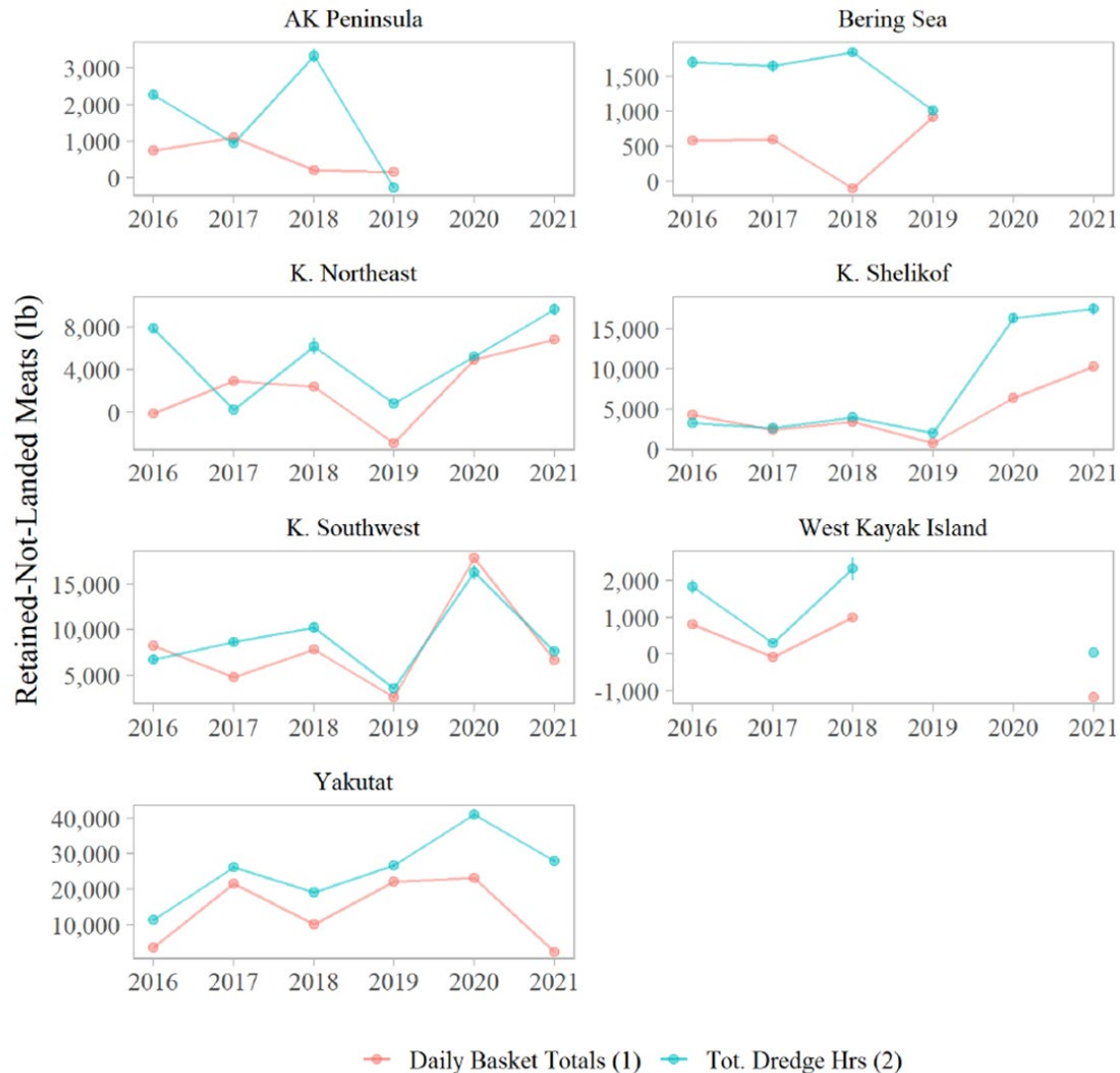
Unaccounted discard mortality that does not count towards GHL

Sources:

- unmarketable meat (e.g., poor color, texture)
- damaged during shucking (e.g., weak meat)
- mistake (e.g., fall out of baskets, etc)



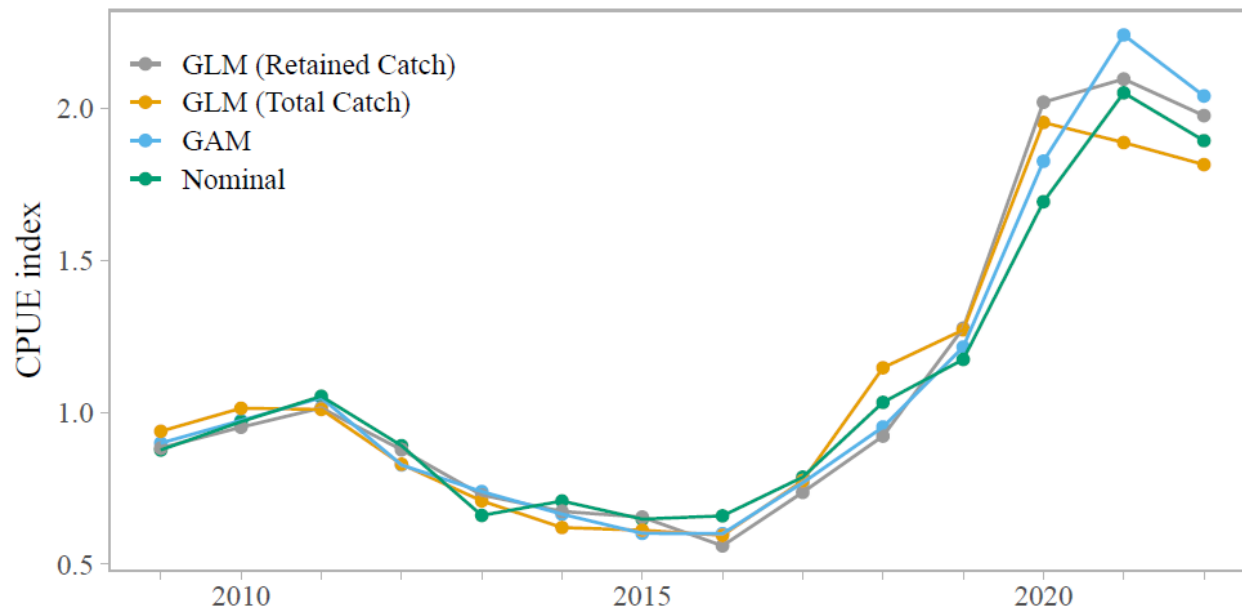
RETAINED-NOT-LANDED MEATS



ASA DEVELOPMENT – CPUE STANDARDIZATION

Retained Catch CPUE (Appendix C, Table 2)

Model	Terms	df	R^2	Δ AIC
Null	<i>Season</i>	13	0.4	0
Final	<i>ns(depth, df = 4) + Dredge Width + Month + Season</i>	22	0.45	-136
Final+ <i>Bed</i>		24	0.45	-140
Final+ <i>Vessel</i>		25	0.45	-143



ASA DEVELOPMENT - MODELS

22.1a: Model KSH22.1 (Jackson 2022) with updated 2022 ADF&G Dredge Survey biomass and size and age composition data, as well as 2022/23 fishery catch, CPUE (based on retained catch), and size composition data.

23.0: Model 22.1a including fishery discarded catch from 1996/97-2022/23 and size composition from 2009/10-2022/23.

23.0a: Model 23.0 with extra standard error on standardized fishery CPUE from 2009/10-2022/23.

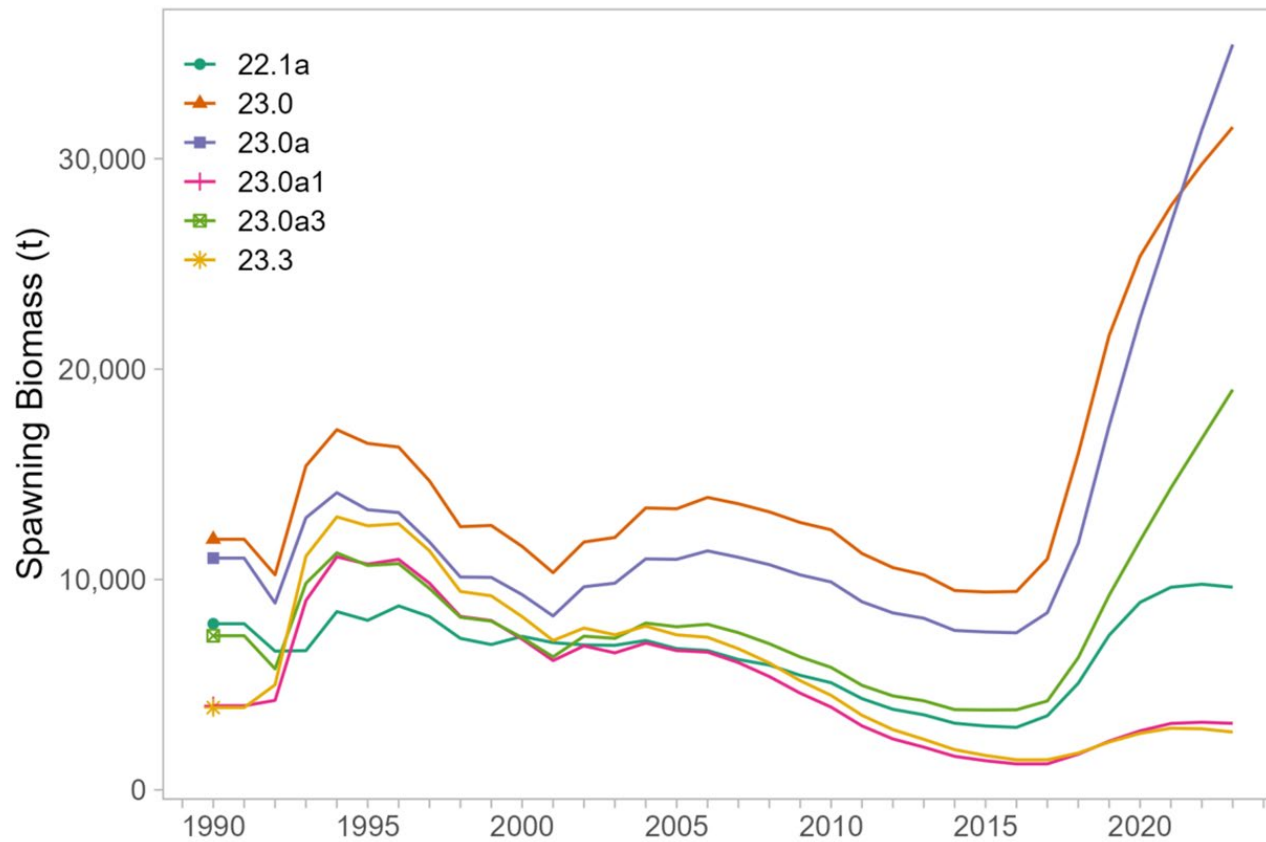
23.0a1: Model 23.0a without dredge survey size and age composition data from 2016 - 2018.

23.0a3: Model 23.0a with down-weighted dredge survey size and age composition data from 2016 - 2018.

23.3: Model 23.0a with full dredge survey selectivity (i.e. selectivity = 1) across all size classes.



ASA DEVELOPMENT



ASA DEVELOPMENT – SPT RECOMMENDATION

- Continue with models 23.0a3 and 23.3
- Troubleshoot dredge selectivity
- Improve fits to abundance indices for 23.3
- Estimate dredge survey catchability (SSC 2022 Comment) – explore timevarying q
- Recover historical observer data
- Update age composition data



FMP AMENDMENT

Options:

- 1) Status quo – set harvest specification annually
- 2) Revise scallop FMP to remove language of requirements to set annual specifications – move to biennial or triennial schedule
- SPT supported the proposed amendment



Questions?



Scallop SAFE 2023: Socioeconomic Update

Prepared by Scott A. Miller, Industry
Economist, NOAA Fisheries, Juneau.



LLP Ownership Transfers

- LLP (004) was transferred from Scott Hulse to Ty W. Babb, of Maine, in 2022; no known vessel was associated.
- LLP(004) was again transferred in 2022 from Ty W. Babb to Provider Fisheries LLC, a cooperative member
- LLPs 003 was transferred from Atlantic Capes Fisheries Inc. to Arctic Hunter LLC, a cooperative member
- EWT LLC continues to own LLP 006, no vessel associated
- The vessel Kilkenny (homeported in Kodiak), is owned by Atlantic Capes Fisheries Inc. but no longer has a scallop LLP associated with it. Historically Kilkenny delivered fresh scallop meats for marketing in Kodiak and Homer.
- No State of Alaska waters registrants have fished since the management plan was adopted.



LLP Ownership Information: Cooperative Affiliated

- No known change in cooperative membership or cooperative affiliated LLP ownership shares
- Cooperative members collectively own three vessels qualified to fish their LLPs; the Polar Sea (LLP 005, LLP 003), the Provider (LLP 008, LLP 004), and the Ocean Hunter (LLP 007, LLP 009).
- LLP 002 (American Seafoods) and LLP 010 (Alaska Scallop Fisheries LLC) are also cooperative members.
- Provider is exclusively used to fish scallops, Polar Sea and Ocean Hunter may also participate in the Crab Rationalization Program fisheries
- Cooperative members freeze product at sea and deliver to cold storage or freezer containers for barging



Landed Value Update: 2021-22 to 2022-23

- Landings increased from 298,755 lbs. to 329,095, a 10.16% increase
- Price increased from \$11.06/lb. to \$13.56/ lb., a 22.6% increase
- Value increased from \$3.304 million to \$4.462 million, a 35.05% increase
- Two cooperative vessels fished in 2021-22
- Potential crew share (assumes 24 total positions, and 42% of total revenue) increased from \$57,824 to \$78,094



Port Landings 2019-2023

Port	Season			
	2019/20	2020/21	2021/22	2021/22
Dutch Harbor	1			1
Homer	1			
Kodiak	5	5	8	10
Yakutat	3	2	2	3
Seattle		1		
Unknown				1
Total	10	8	10	15

Source: ADFG Kodiak Scallop Program Office 2023



Revisions to be done in next full SAFE

- Port of landings data (# of landings by port) has been compiled by ADF&G back to 1990.
- A comparative analysis of this data will be developed to show changes in community participation over time.
- An updated ownership chart with verified shares will be provided.
- Dramatic changes in import markets have occurred in recent years. An updated import market assessment will be provided.
- The relative performance, volume, and value of the Atlantic sea scallop fishery will be provided.



Questions?

