

# GOA octopus complex 2021

たこ焼き



Olav A. Ormseth

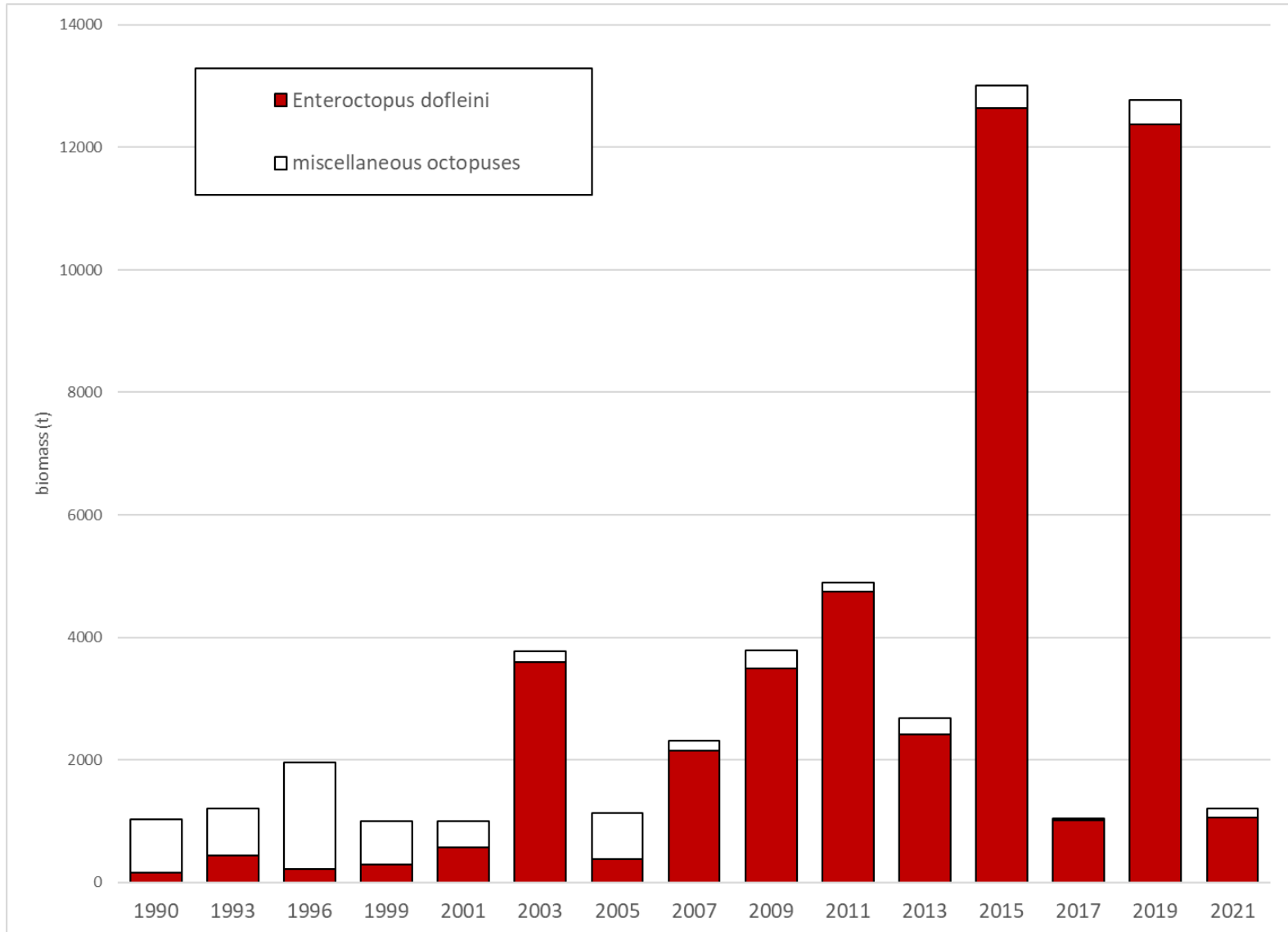
Alaska Fisheries Science Center

NPFMC Groundfish Plan Team meeting, November 2021

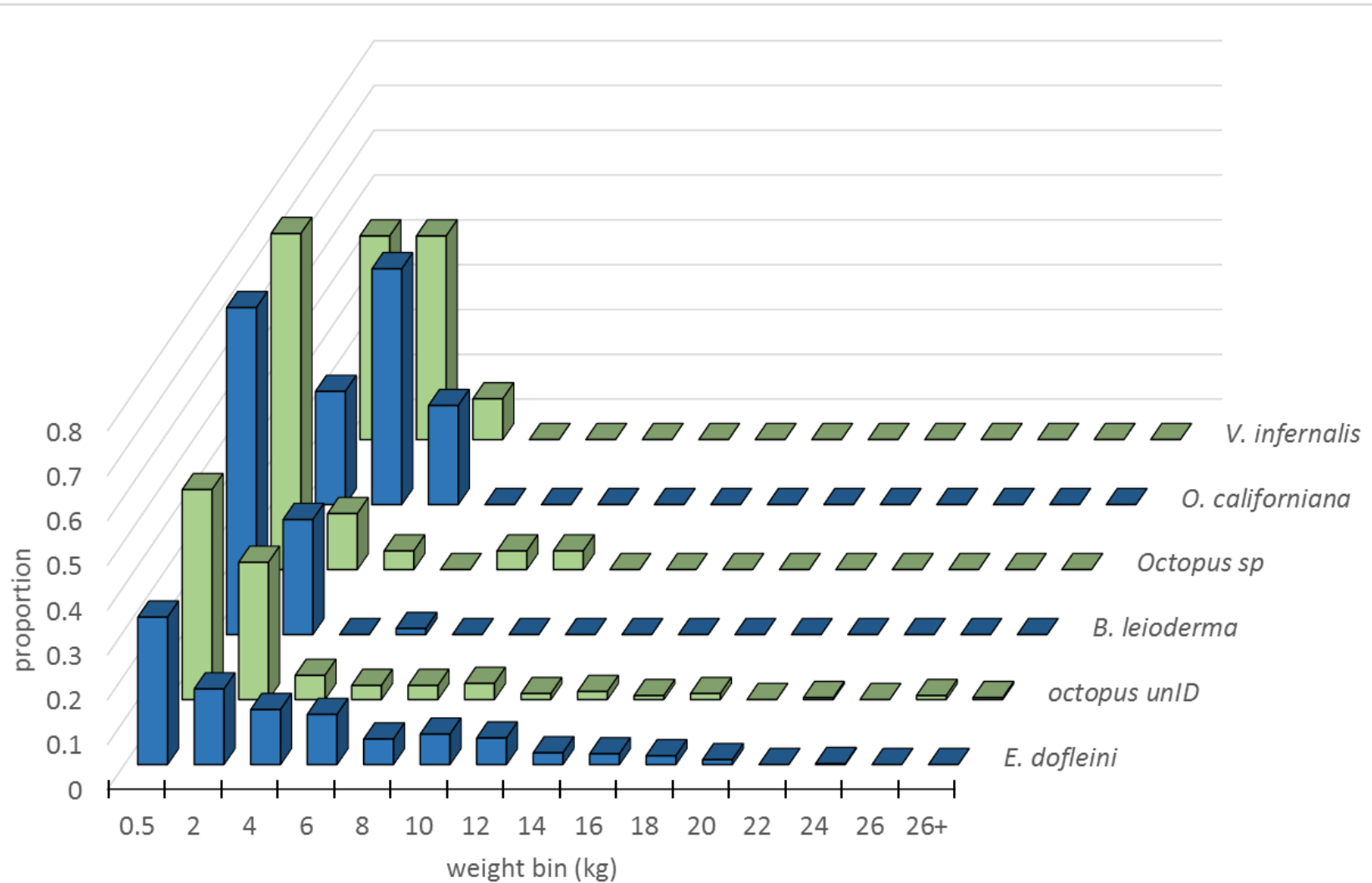
# overview

- **overview of the complex**
- **survey results (biomass & size)**
- **catch data**
- **harvest recommendations**

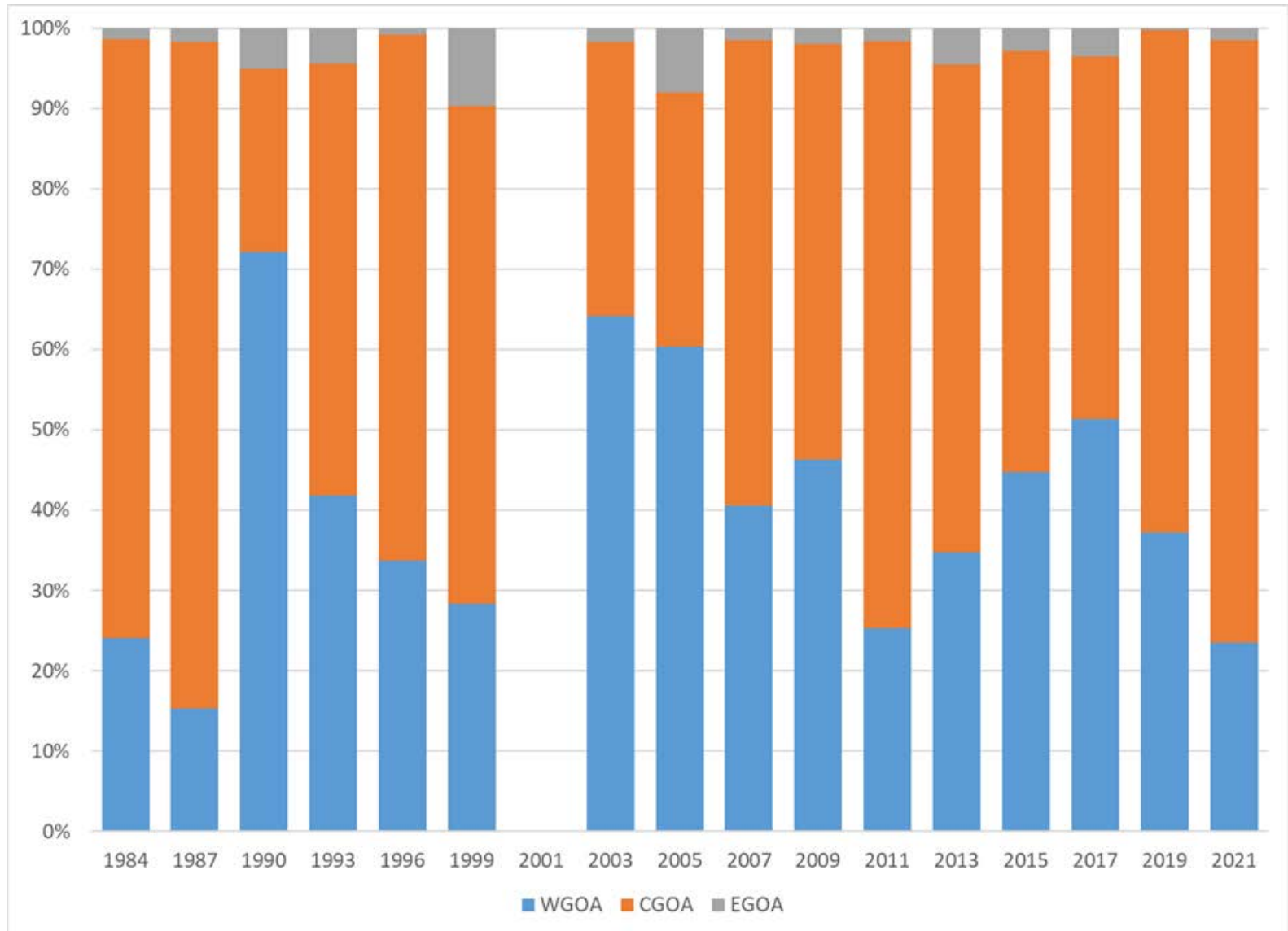
# *Enteroctopus dofleini* are dominant



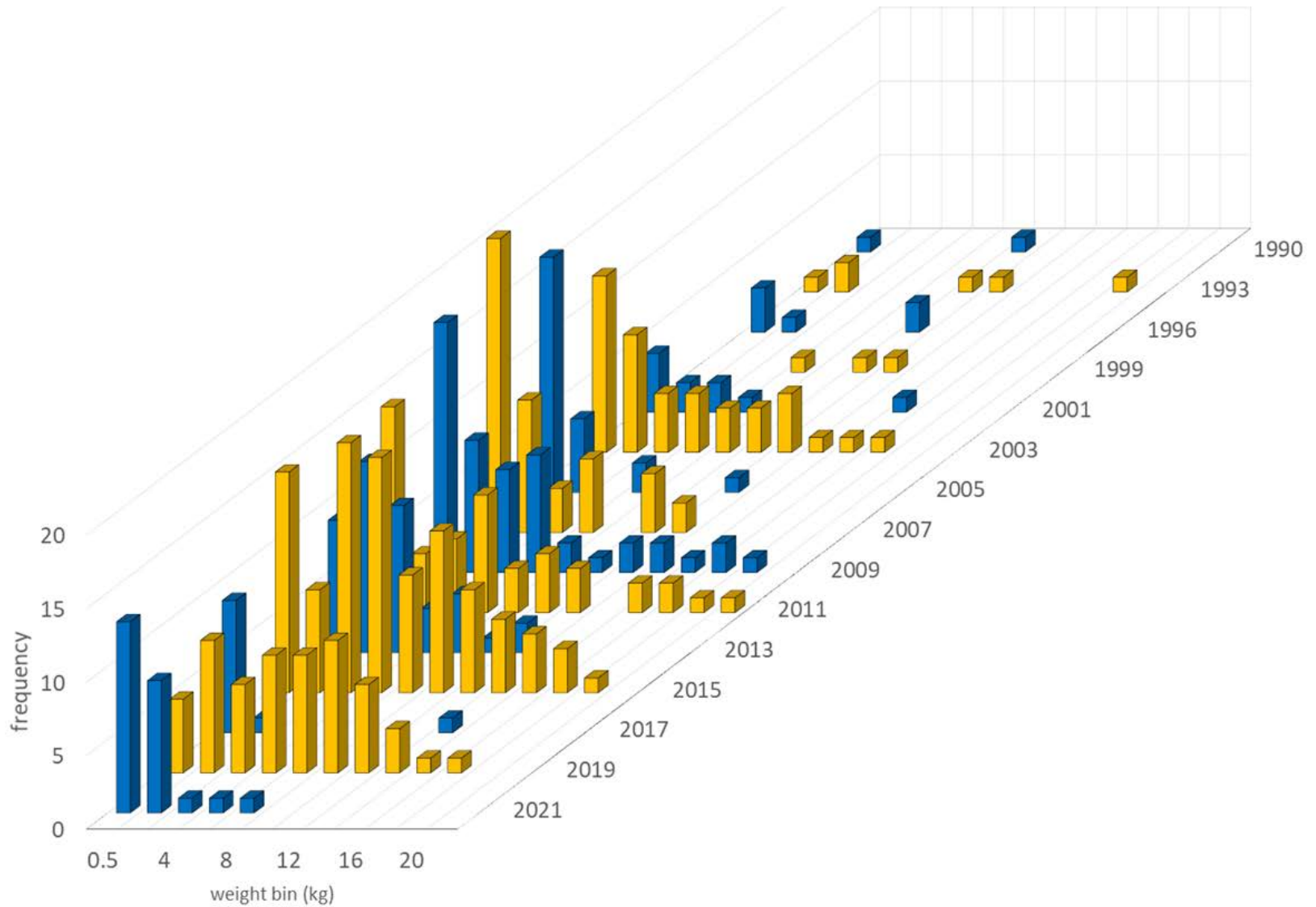
# GOA octopus: major species & sizes



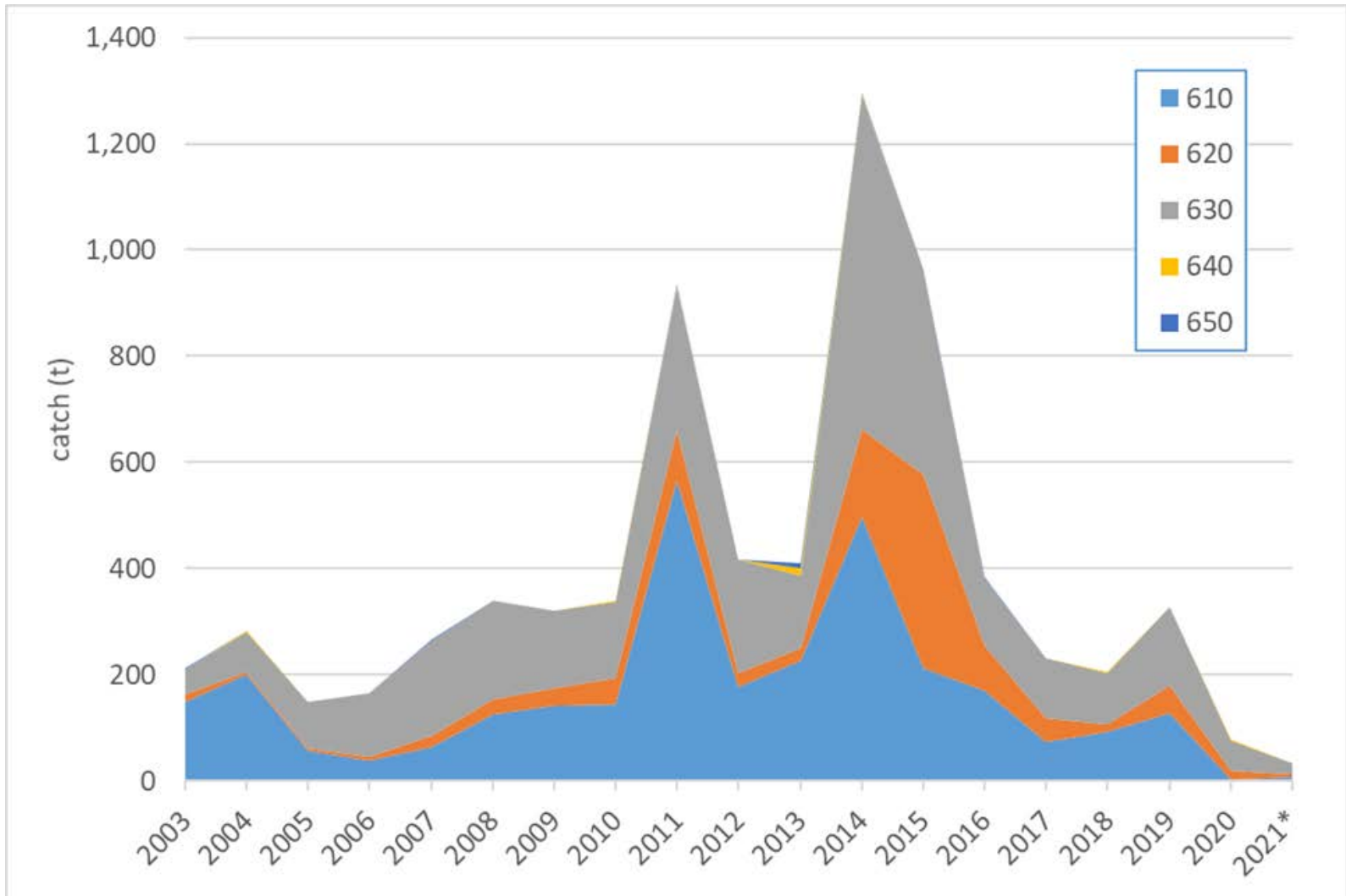
# octopus biomass by area



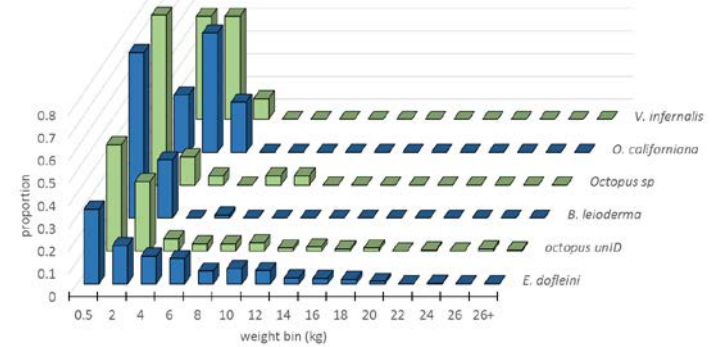
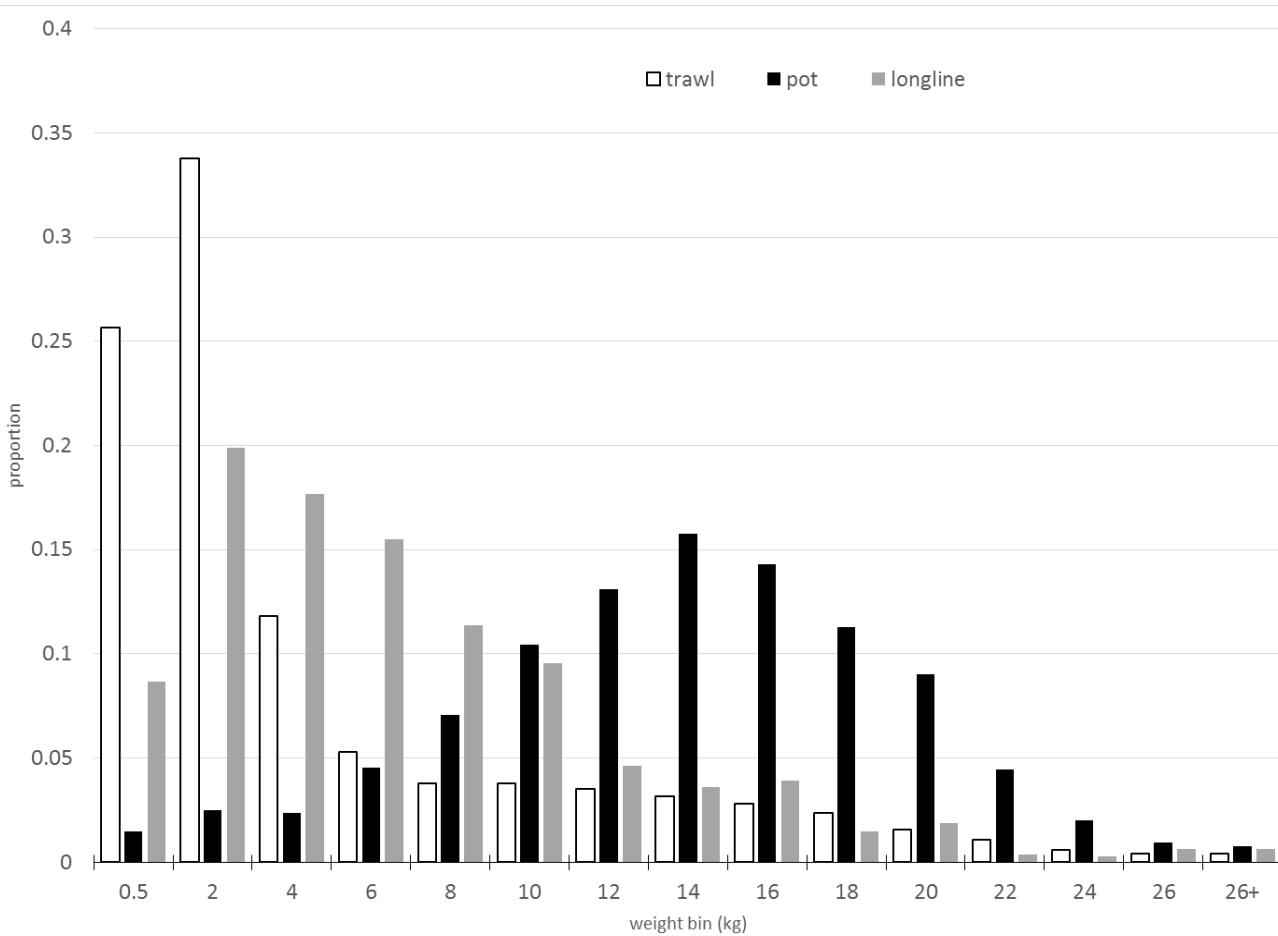
# *E. dofleini* survey size comps



# octopus catch by area



# octopus fishery size comps





# harvest recommendations

<b>Harvest Recommendations</b>				
<b>Quantity</b>	As estimated or <i>specified in the last assessment for:</i>		As estimated or <i>recommended this year for:</i>	
	2020	2021	2022	2023
Tier 6 (max. historical catch)				
maximum historical catch	1,307	1,307	<b>1,307</b>	1,307
OFL (t)	1,307	1,307	<b>1,307</b>	1,307
Maximum ABC (t)	980	980	<b>980</b>	980
ABC (t)	980	980	<b>980</b>	980
<b>Status</b>	As determined <i>last</i> year for:		As determined <i>this</i> year for:	
	2018	2019	2020	2021
Overfishing	no	n/a	no	n/a

- streamlining our science success: why aren't octopus in the EC category?
- if we keep catch limits, could the timing change to a longer cycle?

# no risk table 🤔 rationale

Most of the elements in the risk table are not applicable to the GOA octopus stock:

- 1) species that are in Tier 6 have, by definition, inherent data-limited assessment problems
- 2) similarly, data do not exist to assess population dynamics for Tier 6 stocks
- 3) fishery performance indicators are not relevant for a nontarget stock
- 4) while the potential for some environmental effects could be assessed at a very basic level, too little is known about the octopus complex to make effective decisions
- 5) this assessment does track changes in patterns of incidental catch, but that analysis would not be used to reduce the ABC.