



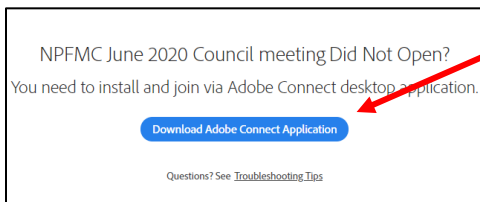
North Pacific Fishery Management Council

Simon Kinneen, Chair | David Witherell, Executive Director
1007 W. 3rd Avenue, Suite 400, Anchorage, AK 99501
Phone 907-271-2809 | www.npfmc.org

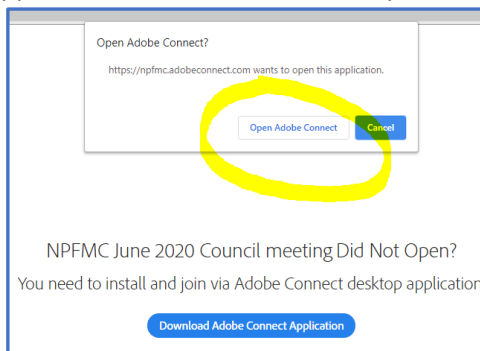
Connecting to Adobe Connect meetings on your computer

If you are having trouble connecting at any point, please email npfmc.admin@noaa.gov and include your phone number. The email is monitored closely, and a member of the admin team will call you back.

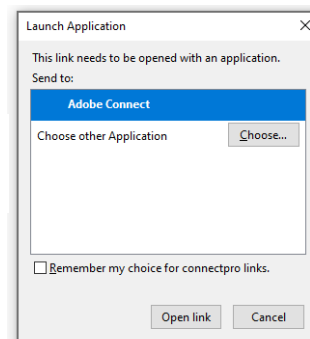
1. Connect to the on-line meeting from the link located on the eAgenda or website.
2. If you get the message below, you need to download the Adobe Connect app for your computer:



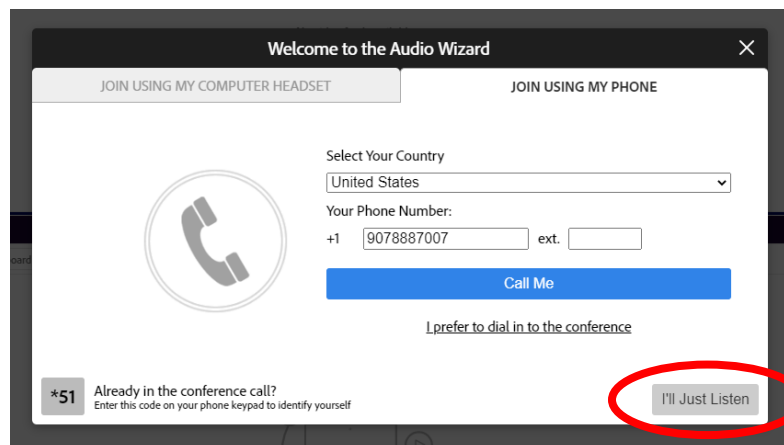
3. Once the app is downloaded and installed, you should get a window prompt to open the link in Adobe Connect.



Or like this:



4. Enter as a Guest, **type your first and last name**, and click “Enter Room”. You will be connected to the Adobe Connect meeting. If you’re not planning to give public testimony, join in “Listen Only” mode.



If you intend to provide public testimony, select the “Dial Out” option, enter your phone number, and the meeting will call you within a minute to connect you to audio for the meeting. Please mute yourself on your phone until your name is called to testify.