

D4 Crab Economic SAFE 2022 - Errata (April 2, 2023)

The following are two figures missing from D4 Crab Economic SAFE 2022 -Uploaded: 03/31/2023 12:54 PM AKDT

These figures are referenced on p. 82, in the first line of Section 3.3.1: Harvest Sector Net Earnings Indices: *"Figures ?? and ??, with tabular results shown in Tables 4.23 and 4.24..."*.

Note that the correct sequencing of figures in the document would place the following figures after Figure 3.6, and be numbered 3.7 and 3.8, respectively (as shown here in captions below the figures). This would change the numbering of figures in the posted document beginning at Figure 3.7, such that the figure listed as 3.7 on page 86 would be captioned "Figure 3.9: Crab harvest quota lease market indicators, selected crab fisheries", and all subsequent figures would renumbered similarly.

Figure 1: first figure referenced as Figure ?? on p. 82

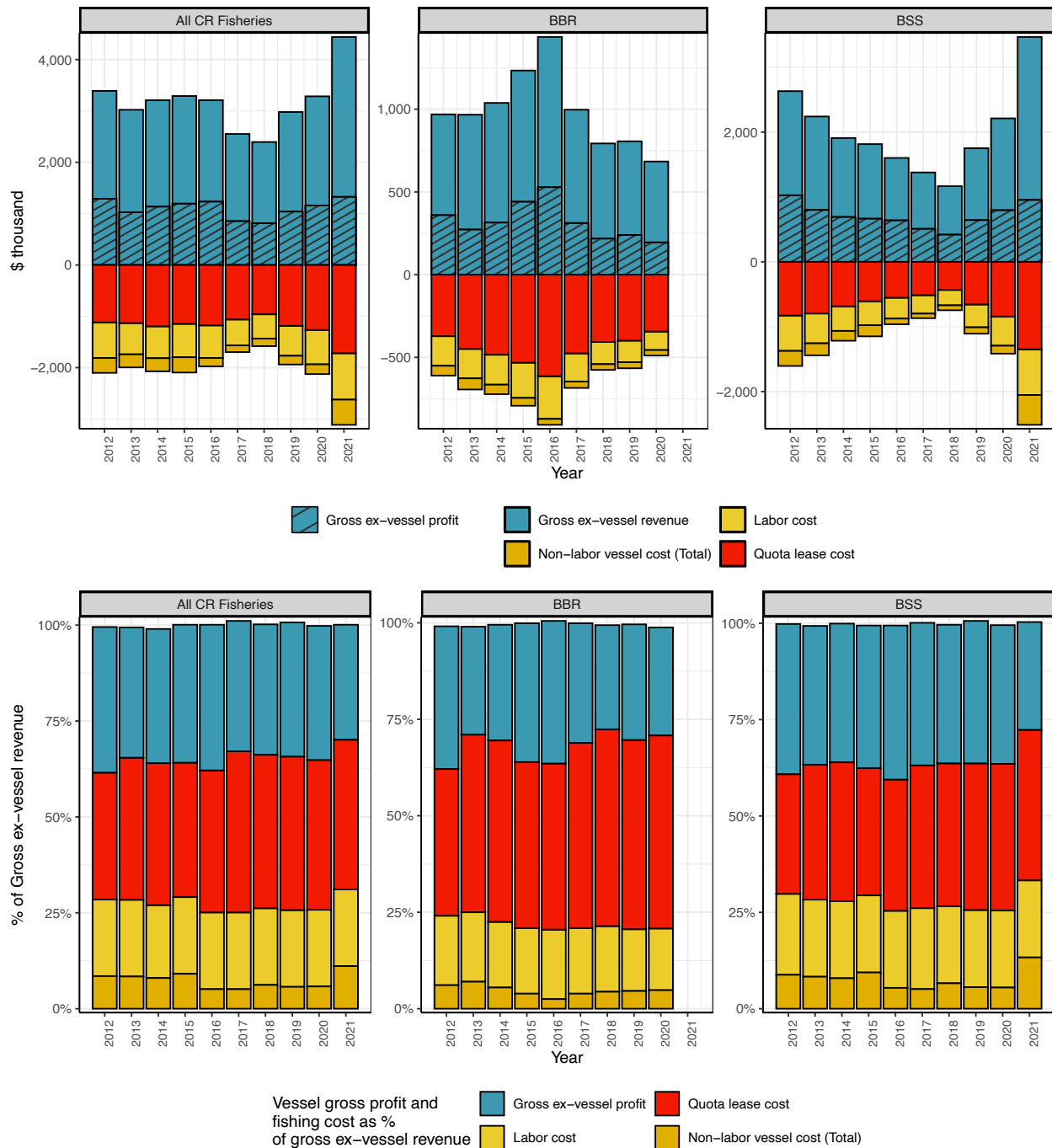


Figure 3.7: Vessel-level mean operating costs and gross revenue residuals, BBR, BSS, and all CR fisheries in aggregate

Source NMFS AFSC BSAI Crab Economic Data. All dollar values are adjusted for inflation to 2021-equivalent value. Tabular data available in Table 4.23. Values shown represent mean vessel-level earnings and expenditures by cost item for calendar years 2012-present, averaged over all vessel entities reporting except where data are suppressed for confidentiality. Cost data shown include all cost items for which data are available, but do not represent a comprehensive accounting of operating expenditures.

Figure 2: second figure referenced as Figure ?? on p. 82

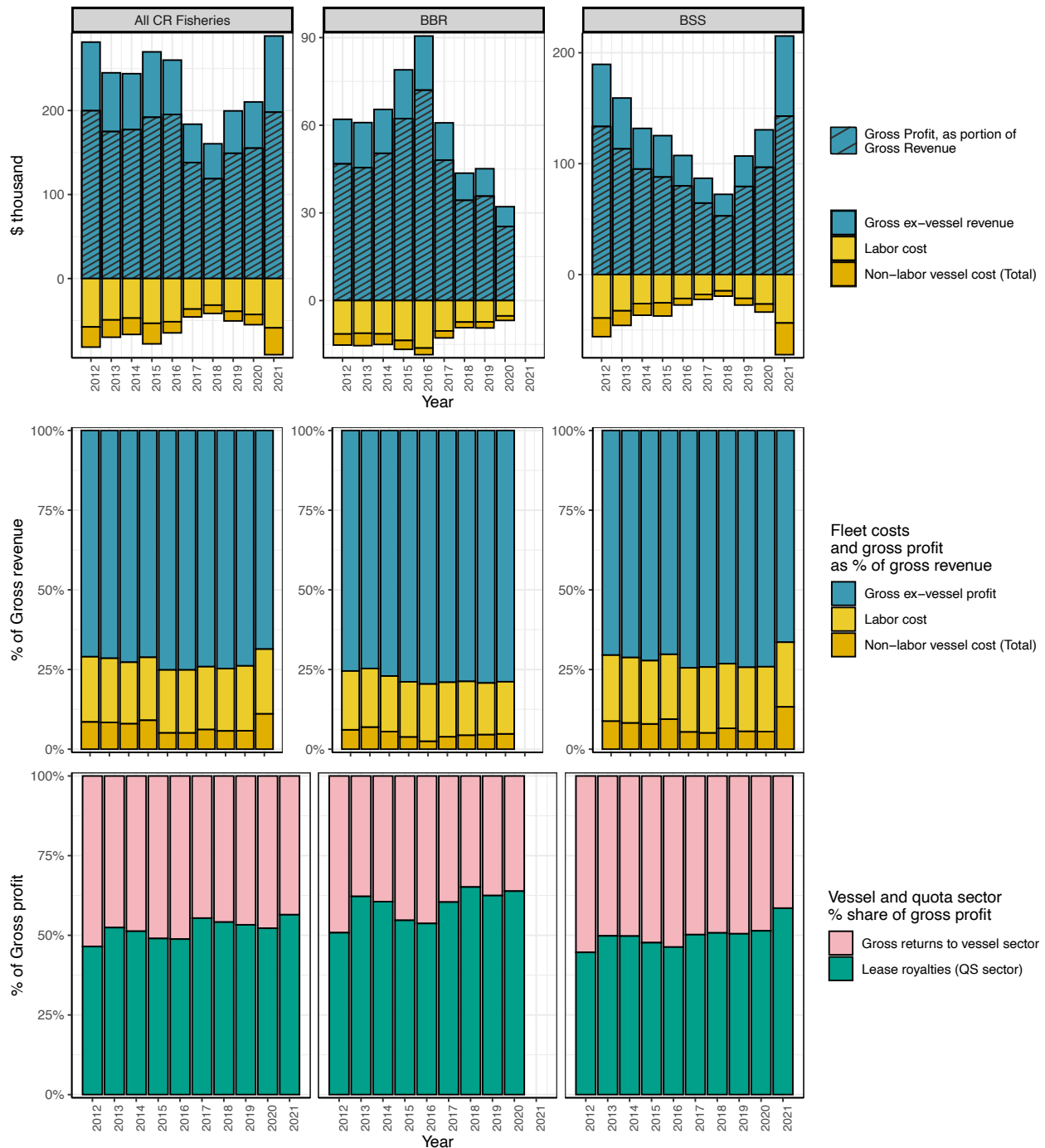


Figure 3.8: Fleet-level aggregate operating costs and gross revenue residuals, BBR, BSS, and all CR fisheries in aggregate

Source NMFS AFSC BSAI Crab Economic Data. All dollar values are adjusted for inflation to 2021-equivalent value. Tabular data available in Table 4.24 Values shown represent aggregate earnings and expenditures by cost item for calendar years 2012-present, summed over all vessel entities reporting except where data are suppressed for confidentiality. Cost data shown include all cost items for which data are available, but do not represent a comprehensive accounting of operating expenditures.