

LOCAL KNOWLEDGE, TRADITIONAL KNOWLEDGE, AND SUBSISTENCE TASKFORCE UPDATE

KATE HAAPALA, COUNCIL STAFF

NOVEMBER 12, 2020



BACKGROUND

- The **purpose of today's presentation is to provide a high-level update** on the Local Knowledge (LK), Traditional Knowledge (TK), and Subsistence Taskforce's work to date.
 - Highlight major outcomes from the November 2020 meeting and provide a snapshot of overall work
- Last meeting November 9 and 10
 - 3rd meeting in overall work
 - Taskforce members have also been able to meet individually to continue work despite challenges of global pandemic
 - November meeting had a lot of participation - nearly 30 participants both days



LKTKS TASKFORCE GOALS

Goal 1: To create processes and protocols through which the Council can identify, analyze, and consistently incorporate TK and LK, and the social science of TK and LK, into Council decision-making processes to support the use of best available scientific information in Ecosystem-based Fishery Management (EBFM).

Goal 2: To create a protocol and develop recommendations through which the Council can define and incorporate subsistence information into analyses and decision-making.



TASKFORCE OBJECTIVES

- **Objective 1:** Over the next 2-3 years the Taskforce will identify and define sources of LK and TK, and the social science of LK and TK, to support the use of best scientific information available in Council decision-making.
- **Objective 2:** The Taskforce will provide guidance and analytical protocols to the Council on how to evaluate and analyze LK and TK, and the social science of LK and TK.
- **Objective 3:** The Taskforce will provide guidance on how LK and TK, and the social science of LK and TK, could be incorporated into Council decision-making processes.
- **Objective 4:** Over the next 2-3 years the Taskforce will identify the relevant and appropriate sources of subsistence data and information to use in Council decision-making processes.
- **Objective 5:** The Taskforce will provide guidance on how subsistence data and information can be incorporated into Council decision-making processes.



MAJOR OUTCOMES FROM NOVEMBER MEETING

- Moved forward work on identifying sources of LKTKS information in the format of search engine and 'narrative' sources of data
- Finalized its description of subsistence – over the next week the **workplan and glossary of terms will be completed**
- Discussed the possibility of Norton Sound Red King Crab Case study – **agreed the protocols need to be better developed before this work could begin**
- **Compiled an initial outline of guidelines for LKTKS protocol**



TASKFORCE WORK ON IDENTIFYING SOURCES OF LKTKS INFORMATION - I

Search engine

- The LKTKS Taskforce is working to develop a search engine (Obj. 1 and 4)
- The goal is to create a resource that contains published or publicly available sources of LKTKS information
- The target audience is Council staff and agency partners though it will be publicly available
 - Reduce burden for identifying these sources and lean into expert knowledge network that is the Taskforce
- Other issues being considered by Taskforce: copyright, public submission portal, maintenance upon dissolution
- Target completion: May 2021



When the fish come, we go fishing:
Local Ecological Knowledge
of Non-Salmon Fish Used for Subsistence
in the Bering Strait Region



**Subsistence Use and Knowledge of
Salmon in Barrow and Nuiqsut, Alaska**

Principal Investigator
Courtney Carothers
School of Fisheries and Ocean Sciences
University of Alaska Fairbanks

Graduate Student Researchers
Shelley Cotton, Katie Moerlein

TASKFORCE WORK ON IDENTIFYING SOURCES OF LKTKS INFORMATION - 2

Narrative or non-published sources of data

Answering the question – How can the Taskforce help the Council and staff be aware of non-published sources of information, and in some cases, who they may need to contact to gain access?

- Sources may also be informational and provide broader background information
- These alternative sources are complementary and additive to the search engine
- Envision a written document available on Taskforce website alongside the search engine
- Target completion: May 2021

Examples

- Eskimo Heritage Program, Kawerak
- Alutiiq Museum, Archeological Repository
- Gwich'in Renewable Resources Board - Traditional Knowledge Products
- Leo Network



DESCRIPTION OF SUBSISTENCE

To see the current description for subsistence, please reference the Taskforce's workplan and glossary of terms available on the November meeting's eAgenda

- November discussion emphasized state and federal definitions for subsistence
 - Not reinventing the wheel – these definitions have real implications for people and their use of resources.
- Subsistence is more than a description of *subsistence uses* and incorporates the cultural and spiritual dimensions
- Workplan and glossary of terms completed with final updates from November 2020 and available on Taskforce webpage



DISCUSSION OF ONRAMPS

- At the Taskforce's April 2020 meeting, the body made four preliminary recommendations of potential 'onramps' for LKTKS information in the Council's process
 - Recommendations are a response to the Council's January 2020 motion
 - Onramps will be included in the protocol
1. **Regularly occurring engagement between the Council and tribes (November 2020)**
 2. Trained Tribal Liaison position added to Council staff **(2021)**
 3. Developing resources for including LKTK, the social science of LK and TK, and subsistence information into analyses like Regulatory Impact Reviews (RIRs) and Social Impact Assessments (SIAs) **(2021)**
 4. Adding tribal, LK, TK, or subsistence knowledge holders to existing Plan Teams or committees **(2021)**



TRIBAL ENGAGEMENT

Taskforce is aware that creating an institutional process for Bering Sea region tribes and the Council to interact would be a new element in the Council's overall process

- Reflects the Taskforce's understanding that including LKTKS information into the Council's process is a new undertaking and could bring in tribal members and TK holders in a more meaningful way
 - The Taskforce is not recommending formal Tribal Consultations
- Local Knowledge and Traditional Knowledge are living sources of knowledge 'housed' in individuals and communities
 - Traditional Knowledge especially is conveyed generationally via oral tradition
 - **Building relationships is key**



CONSENSUS RELATED TO TRIBAL ENGAGEMENT - 1

Question 1: How does tribal engagement move the Council forward in terms of including LKTKS information into its process?

- Improve relationships and trust between the Council and tribes
- Facilitating two-way communication
- Potentially support NMFS as they engage formal Tribal Consultation
- Reduce the burden placed on the Council and its staff by ensuring Free Prior and Informed Consent (FPIC) principles are adhered to



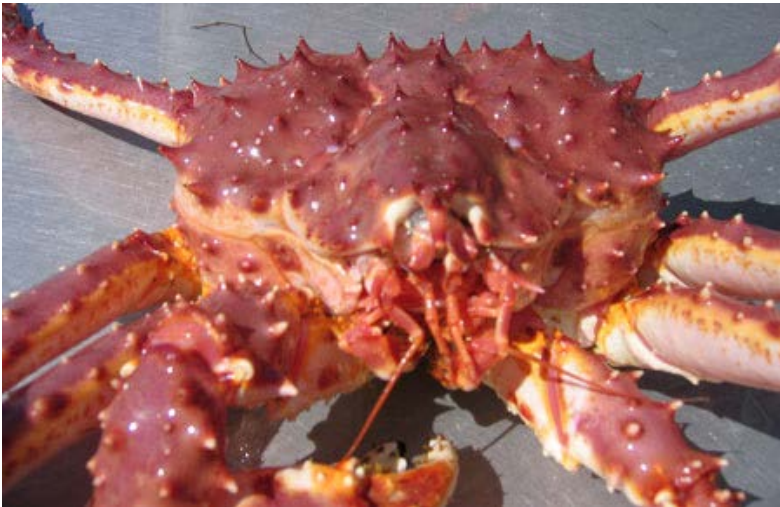
CONSENSUS RELATED TO TRIBAL ENGAGEMENT - 2

Question 2: What would tribal engagement look like in practice?

- Establish a process that allows for a workshop or meeting to be available upon request from the Council and/or tribes
- These meetings would occur when solicited by tribes or the Council – could be action specific or high-level
 - Agenda should be flexible and would depend on why the meeting is being requested
- These meetings would be open to the public
- The expectations should be clear – a meeting or dialogue does not guarantee policy outcomes



NORTON SOUND RED KING CRAB CASE STUDY



Purpose: *To better understand how to achieve including LK, TK, the social science of LK and TK, and subsistence information in the Council's process. The case study is a provides one region-specific, fishery-specific example.*

- Direct response to SSC request but the Taskforce cannot conduct original research on this issue (e.g., ethnographic work in region to collect TK).
- **Providing concrete guidance** based on specific fishery and region
- **Identifying LKTKS** data and data sources
- **Linking protocol** to on the ground example
- **Illustrating** high level, best practices - how would you do this all the way through the process
- Taskforce agreed work on protocols should be more advanced before turning to case study 'test'



CONSENSUS ON PROTOCOL DEVELOPMENT

***Recall Objective #2:** The Taskforce will provide guidance and analytical protocols to the Council on how to evaluate and analyze LK and TK, and the social science of LK and TK*

- Taskforce consensus that the protocol is the main element of our work
- Contain high-level guidelines and practical steps which are tailored to the Council's process for including LKTKS information
- Taskforce came to a consensus on twelve initial guidelines that will be developed further between now and winter 2021 meeting



EXAMPLE OF POTENTIAL GUIDELINES

**Early in work process for defining protocol elements, including guidelines and related content*

Understand key concepts and definitions related to LK, TK, and Subsistence

- a. What is LK?
- b. Who are LK holders?
- c. What is TK?
- d. Who are TK holders
- e. What is subsistence and what is its relationship to TK?

Recognize and respect the role of multiple knowledge systems

- a. Notions of equity
- b. Do no harm
- c. FPIC

Recognize how to identify sources of LKTKS information

- a. Search engine & narrative sources of data
- b. Representation – no one person is the perfect representative of collective knowledge
- c. Confidentiality



PROJECT TIMELINE

		2020			2021			2022			2023		
		Jan	Apr	Nov	Jan	Apr	Nov	Jan	Apr	Nov	Jan	Apr	Nov
Workplan	Set goals and objectives												
	Update document with definitions												
Glossary of terms	Identify set of key terms used by LKTKS Taskforce												
	Consensus on definitions and product completion												
Identify Sources of LKTKS	Develop search engine for sources												
	Identify narrative sources of non published sources												
LKTKS Onramps	Initial review of potential institutional interfaces for LKTKS information												
	Review conceptual model for tribal engagement												
	Review and reach consensus on other institutional interfaces												
	Review, evaluate, and update with case study												
Case Study	Case study identification, Norton Sound Red King Crab												
	Case study development												
	Conducting case study												
	Results, consensus and write up												
LKTK Protocol Development	Identify guidelines and initial outline												
	Review Draft												
	Review Draft												
	Consensus and finalize												
Subsistence Protocol Development	Identify guidelines and												
	Review Draft												
	Review Draft												
	Consensus and finalize												
Final Report to Council	Draft												
	Review												
	Presentation												

QUESTIONS?

