

Testing pot gear modifications to reduce crab bycatch in Bering Sea cod and halibut fisheries

BREP Grant Project Update for NPFMC

February 2022

PRINCIPAL INVESTIGATORS:

Scott Goodman (BSFRF), sgoodman@nrccorp.com

Kyle Antonelis (NRC), kantonelis@nrccorp.com

Jamie Goen (ABSC), jamie@alaskacrabbers.org





**NOAA
FISHERIES**



**Bering Sea
Pot Cod
Cooperative**



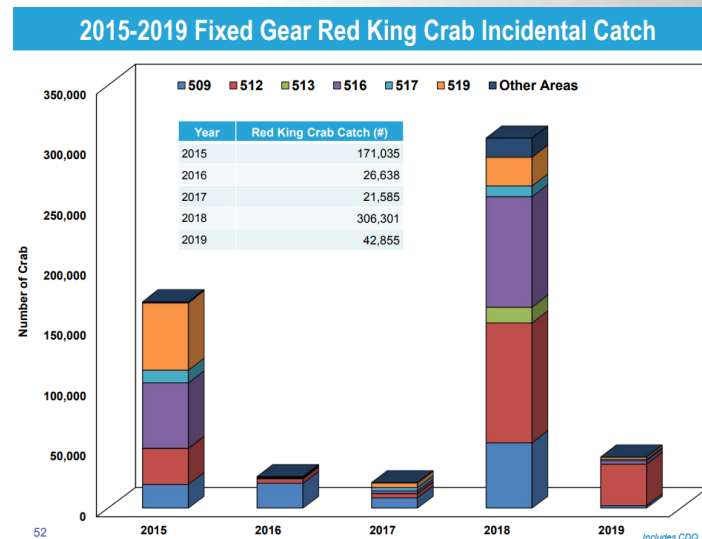
Thanks to our
partners and
collaborators

*"working with fishermen through gear planning,
lab trials, and field work during actual fishing is a
highlight of this project to get to gear options that
help everyone"*

Why?

Periodic high crab bycatch in other pot fisheries

- 2018 high crab bycatch event in pot cod fishery triggered fixed gear industry exploring options
- Focused on gear design to keep crab out as the best choice for bycatch reduction while keeping access to fishing grounds



Project Objectives

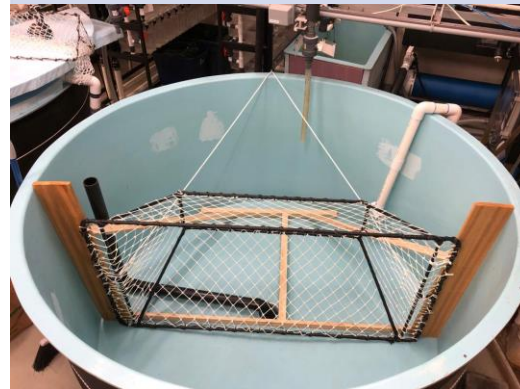
Host

host an industry gear committee meeting and determine gear modifications to be tested,



Conduct

conduct laboratory experiments to determine bycatch reduction effectiveness of pot modifications,



Field

field testing of modifications on fishing grounds, and

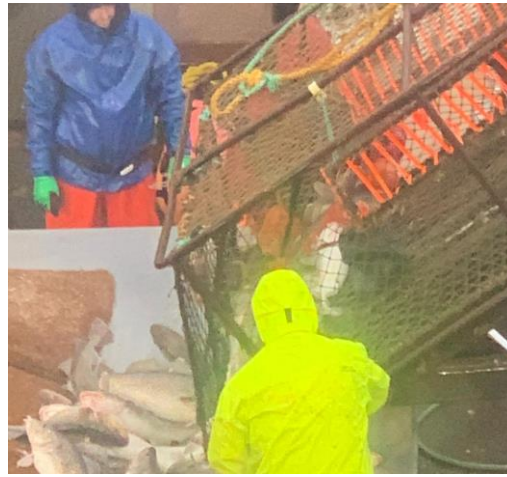


Disseminate

disseminate information.



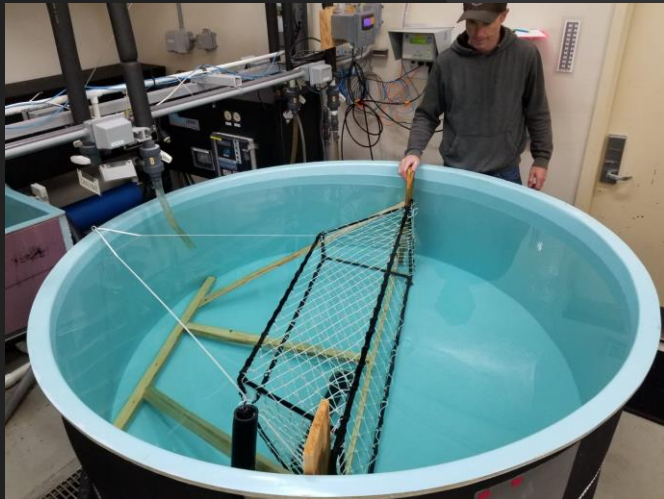
Photos of Gear In the Fishery



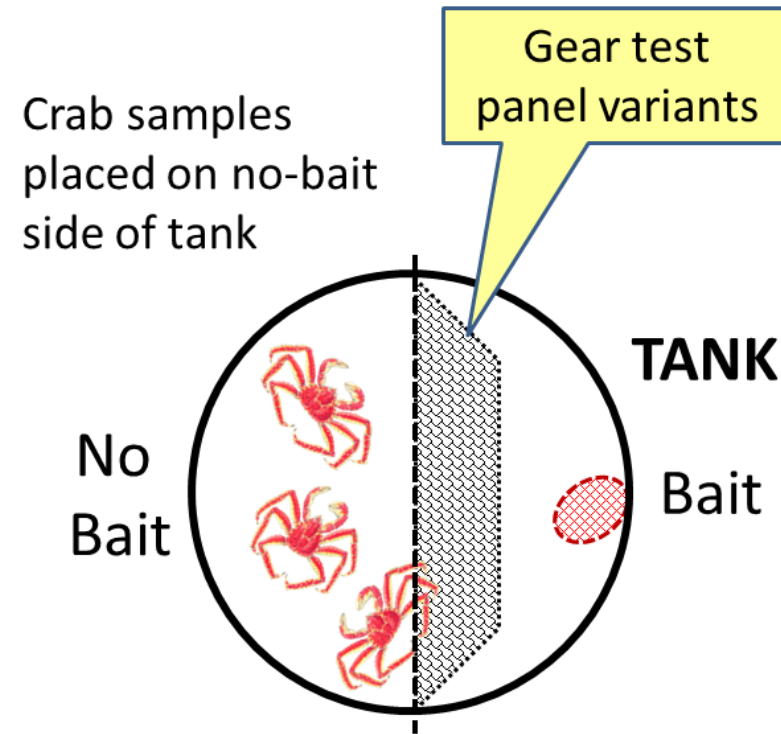
Photos of Test Gear



Methods: Lab & Field Overview



Lab Methods



Basic data recorded:

- pass/no pass through the test panel
- species, size, and sex

Basic controls:

- random draws, # crabs per trial
- bait, soak time, temp

Methods: Lab & Field Overview



Field Methods



Boats chosen – gear placed:

- gear options split among boats
- training/directions for data collection
- recording pot-level fish/crab catches
- fishing activity not prescribed
- distribute test gear among all gear
- record scale of all gear as reference

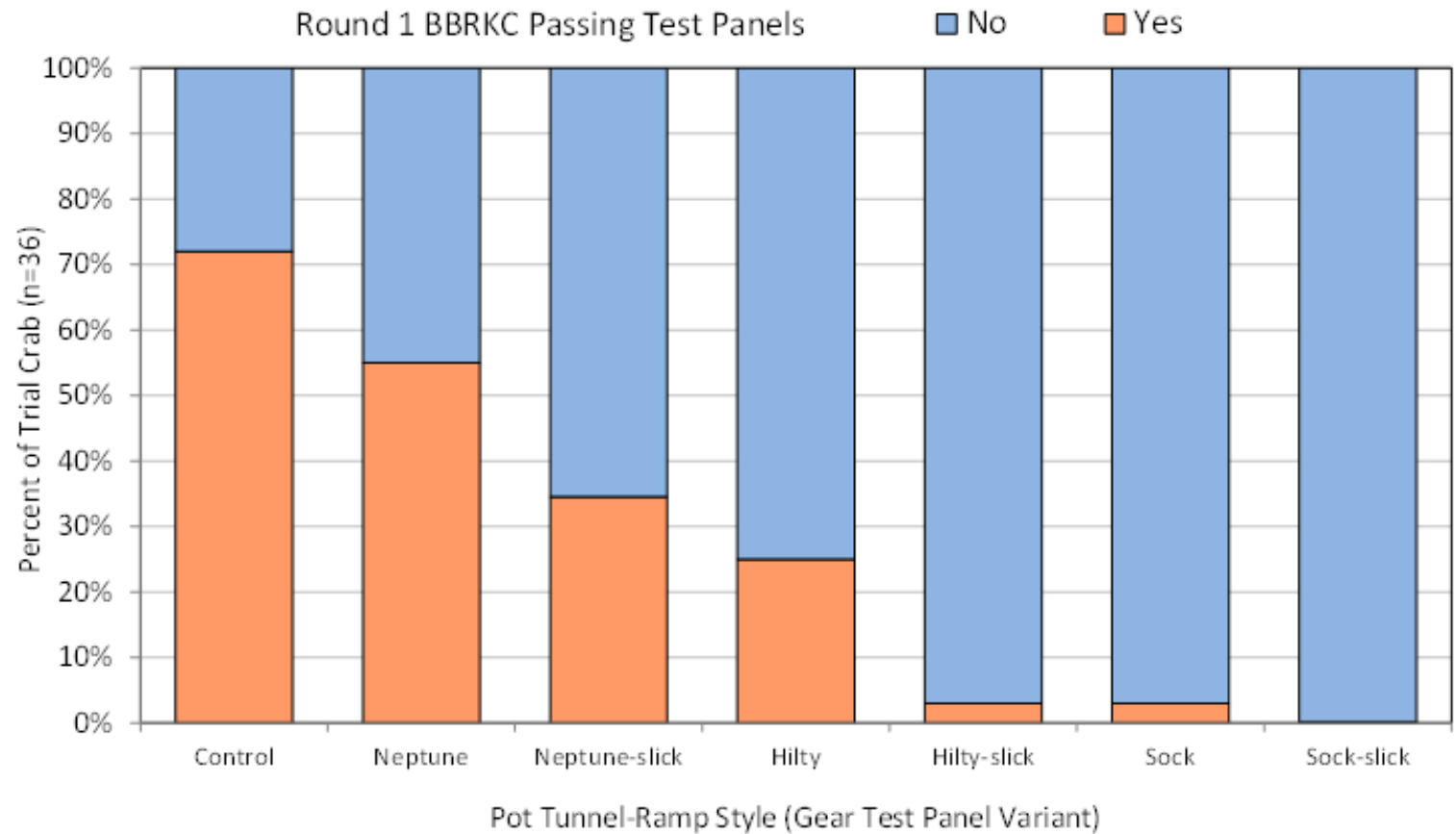
Adjustments to cover opportunities:

- monitor total test crab catches
- adjust gear options if needed
- adjust seasonal coverage if needed

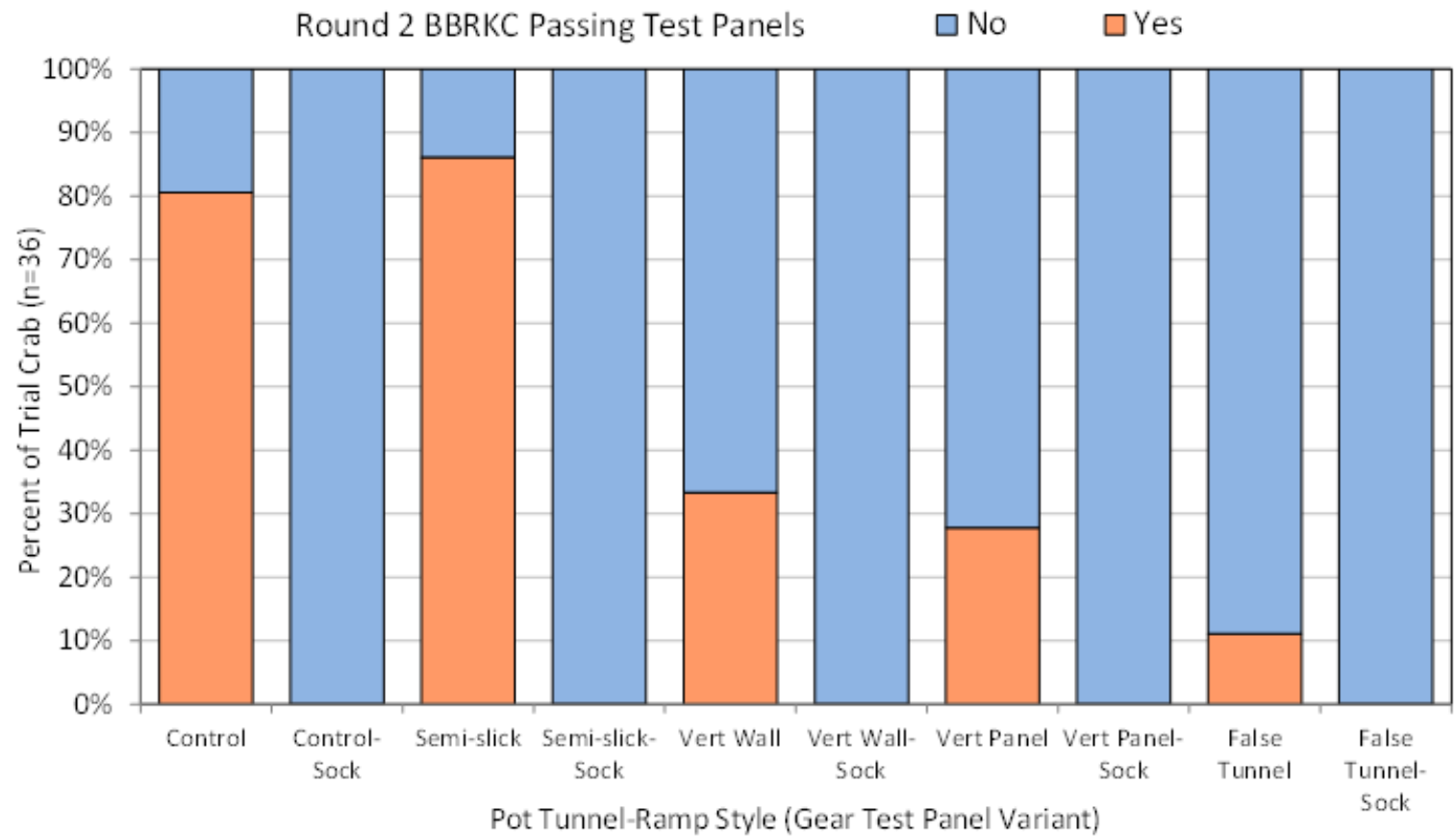
Other field observations:

- behavioral monitoring with video
- vessel or gear problems
- typical/atypical fleet activity

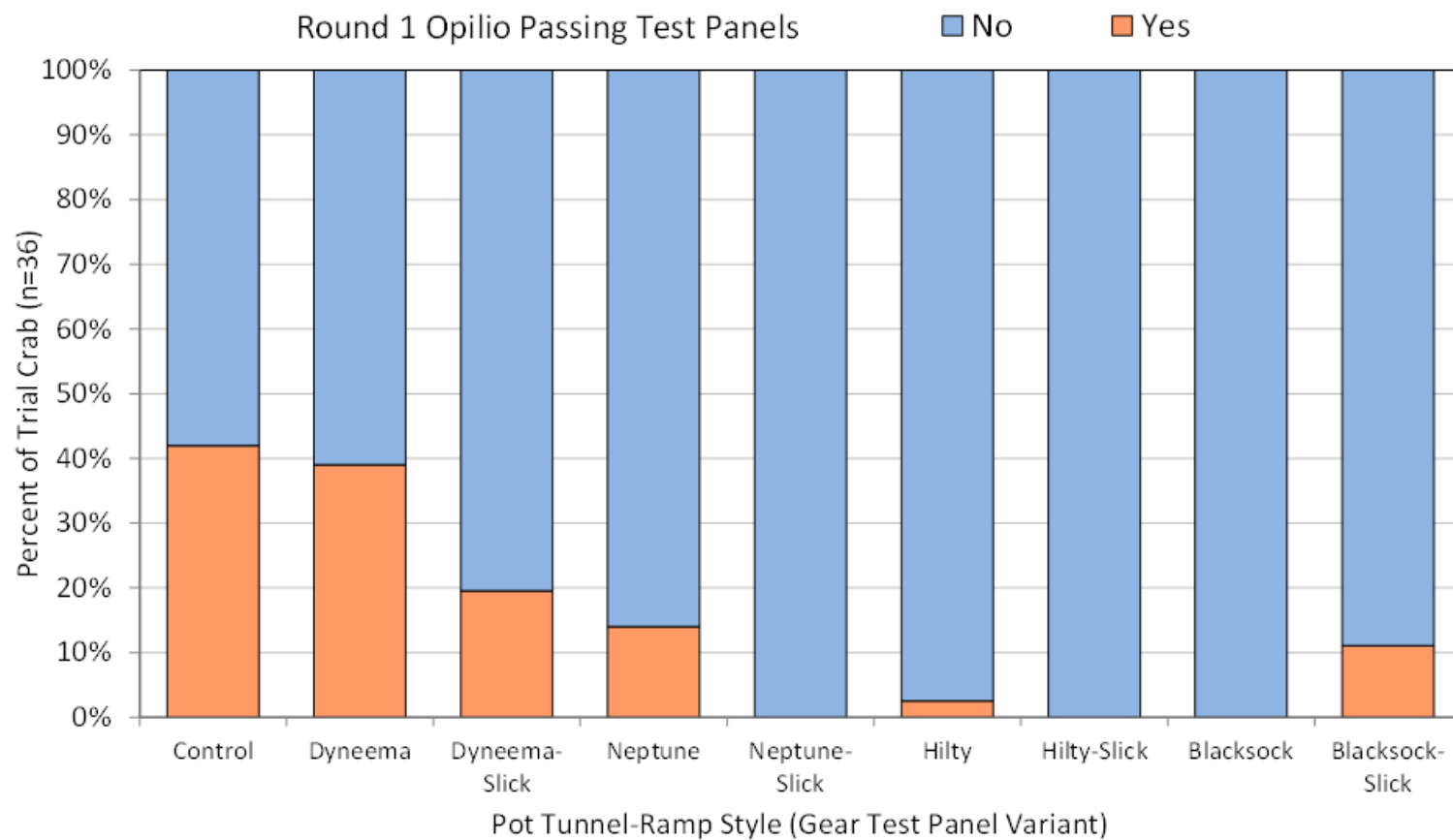
Preliminary Results RKC LAB Round 1



Preliminary Results RKC LAB Round 2

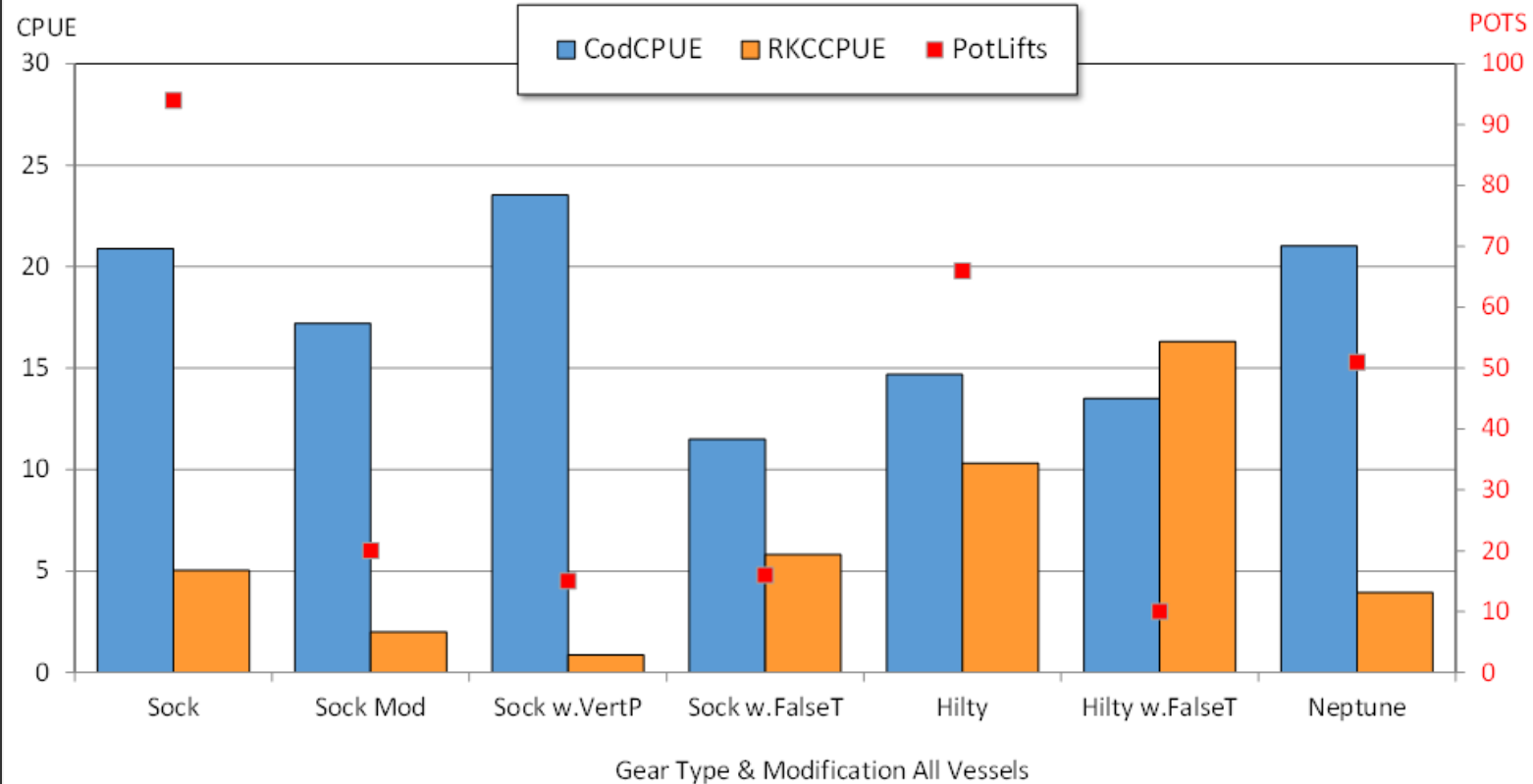


Preliminary Results Opilio LAB Round 1



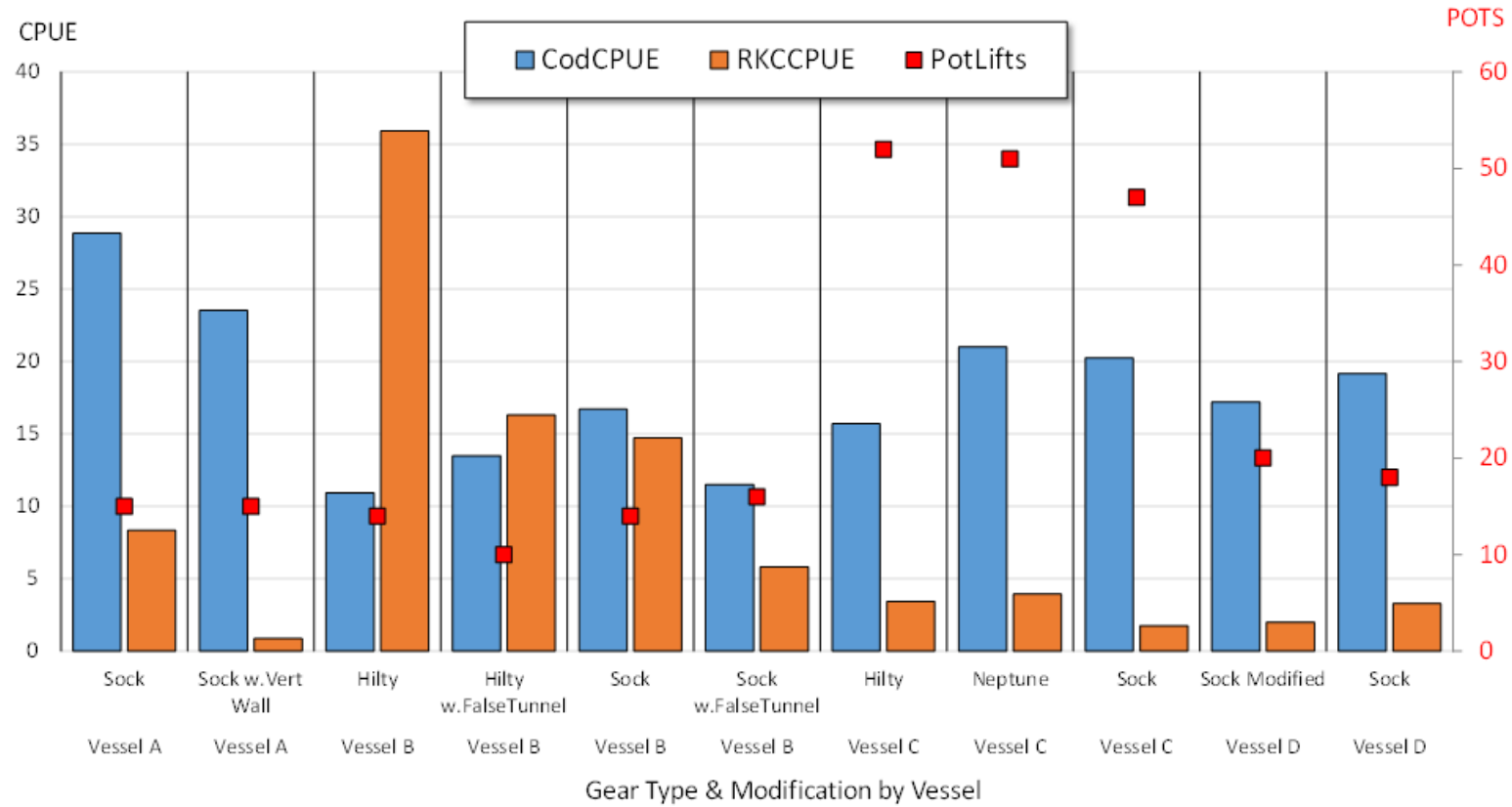
Across all boats, gear variants

Preliminary Results
RKC Field 2
SEP 2021
Pot Cod Fishery



Preliminary Results RKC Field 2 SEP 2021 Pot Cod Fishery

By vessel and gear variant



Next Steps

BREP LAB & FIELD WORK		Target Species	
		COD	HALIBUT
Bycatch Species	RKC	Lab 1 NOV 2019 Lab 3 NOV 2020 Field 1 JAN 2021 Field 2 SEP 2021 Field 5 SEP 2022	Not part of this BREP Project
	OPILIO	Not part of this BREP Project	Lab 2 MAR 2020 Lab 4 MAR 2022 Field 3 SEP 2021 Field 4 MAR-SEP '22

Notes: **upcoming project work in red**

- Lab 1 RKC delivered to Kodiak from the fishery
- Lab 2 Opilio delivered to Kodiak from the fishery - COVID altered
- Lab 3 RKC delivered to Kodiak from the fishery
- Lab 4 Opilio delivered to Kodiak from the fishery**
- Field 1 2 boats, Bering Sea grounds, very few crab
- Field 2 4 boats, Bristol Bay, high crab encounters, field 5 planned
- Field 3 1 boat, Bering Sea halibut, no crab encounters
- Field 4 scheduled for halibut (# boats TBD)**
- Field 5 scheduled for 4 boats, Bristol Bay**

A large crab, likely a King Crab, is shown on a dark, wet wooden surface. The crab is the central focus, with its legs and body clearly visible. The background is slightly blurred, emphasizing the crab. The text is overlaid on the right side of the image.

THANK YOU

Scott Goodman (BSFRF)
sgoodman@nrccorp.com

Kyle Antonelis (NRC)
kantonelis@nrccorp.com

Jamie Goen (ABSC)
jamie@alaskacrabbers.org