

Appendix I2:

Model Comparisons of Fits to Survey Size Composition for "18" Scenarios

Fits to survey size composition data available to the model(s) are presented in this section. Included are plots of mean fits to size compositions, Pearson's residuals as bubble plots, and effective sample sizes. Not all of the fits presented are necessarily included in the parameter optimization for each model; some fits to datasets for a particular model may be included for comparison purposes with other models which include those data in their optimization. The reader should consult the main assessment document to determine which fits are included in the optimization for any particular model.

Note: X, M, S = sex, maturity state, shell condition

Mean survey size compositions

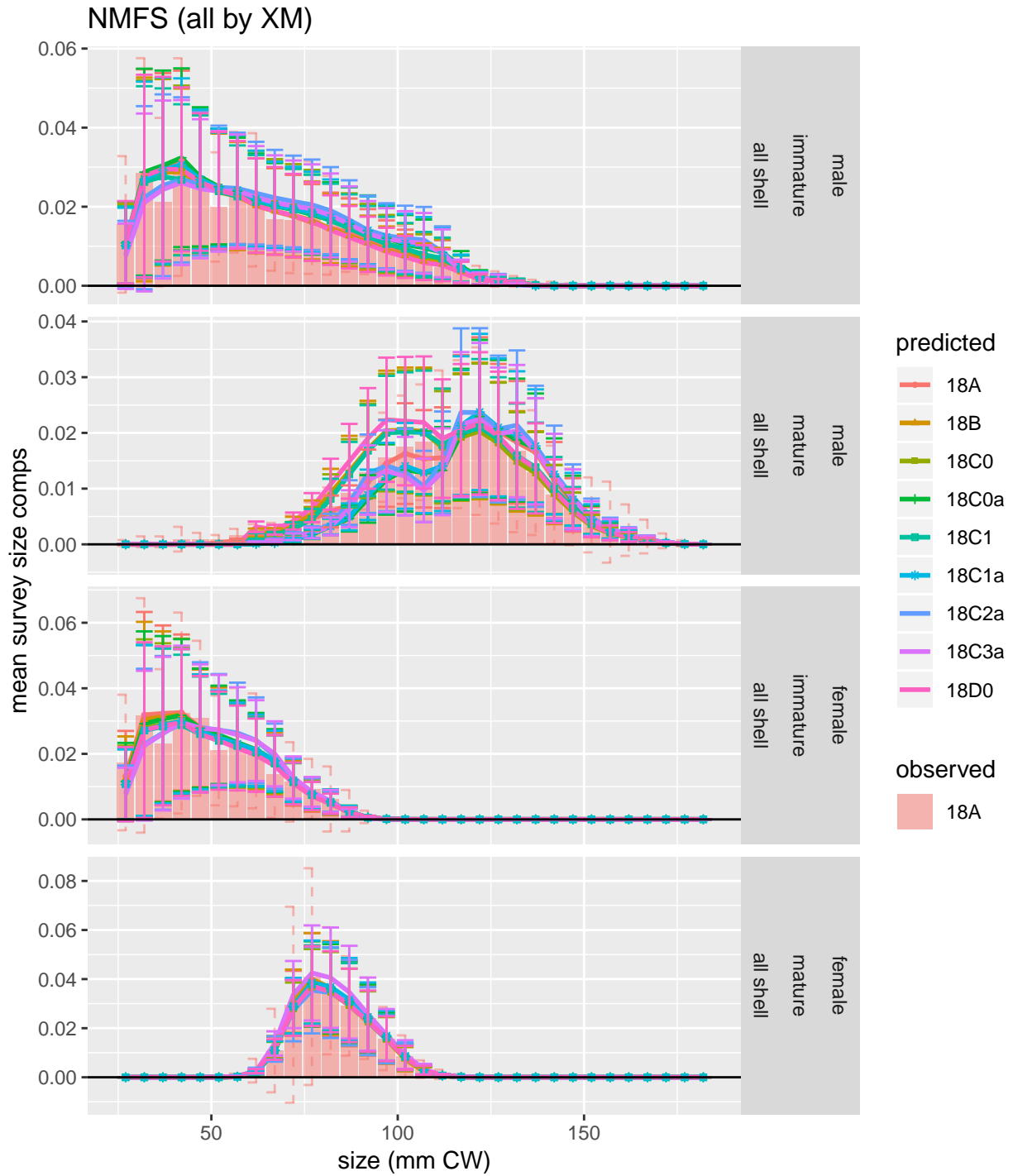


Figure 1: Comparison of observed and predicted mean survey size comps for NMFS (all by XM).

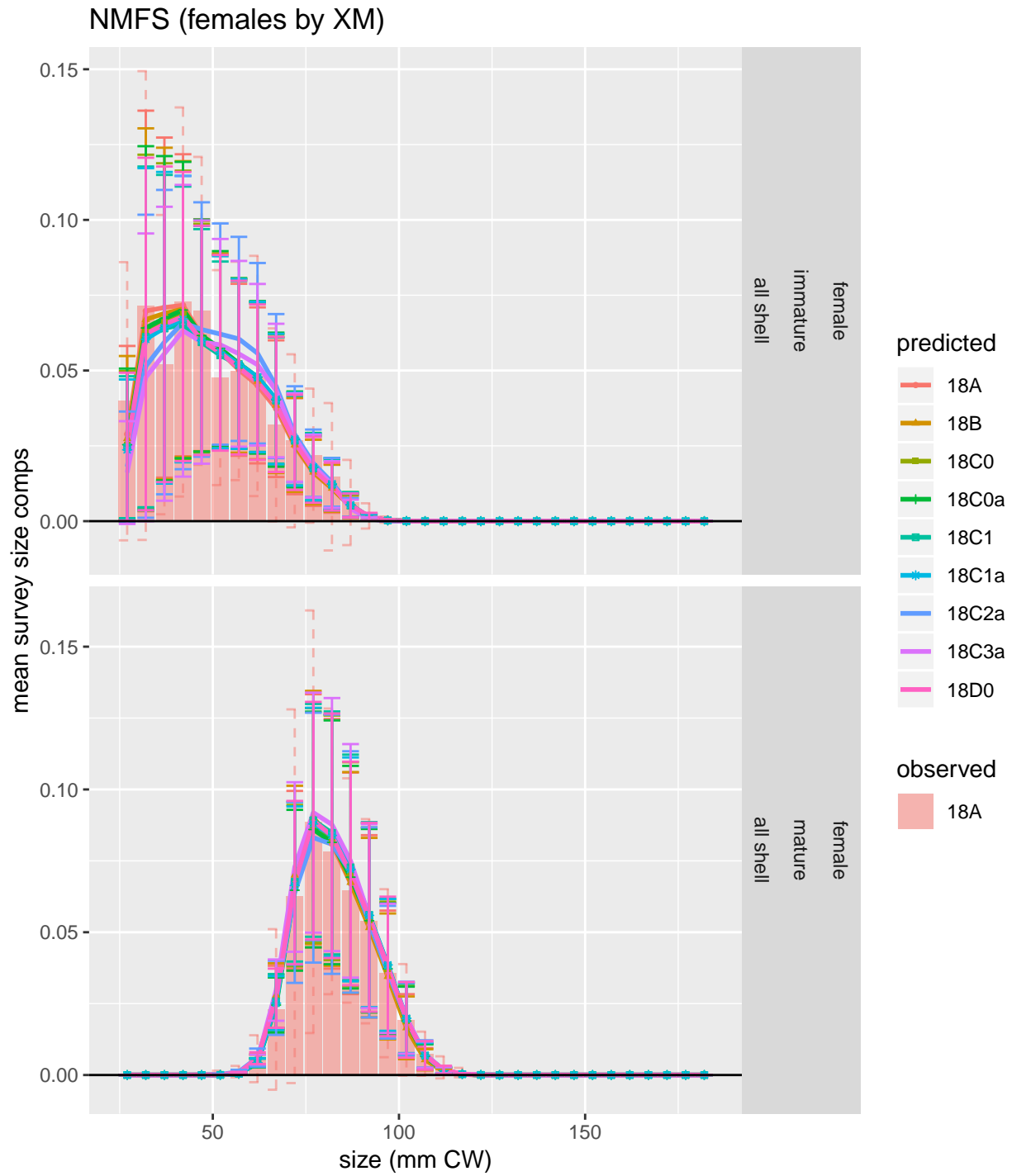


Figure 2: Comparison of observed and predicted mean survey size comps for NMFS (females by XM).

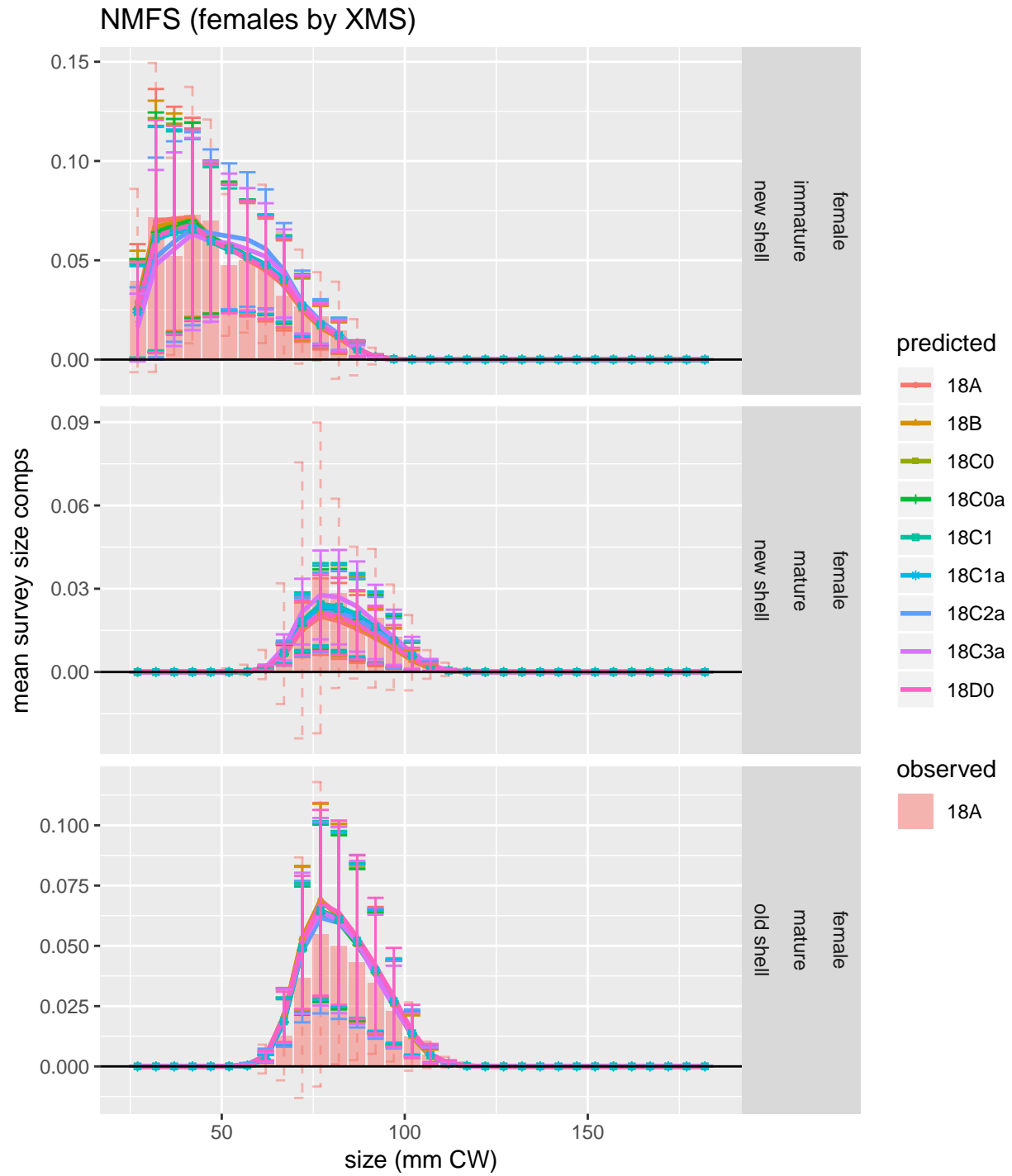


Figure 3: Comparison of observed and predicted mean survey size comps for NMFS (females by XMS).

NMFS (males by X)

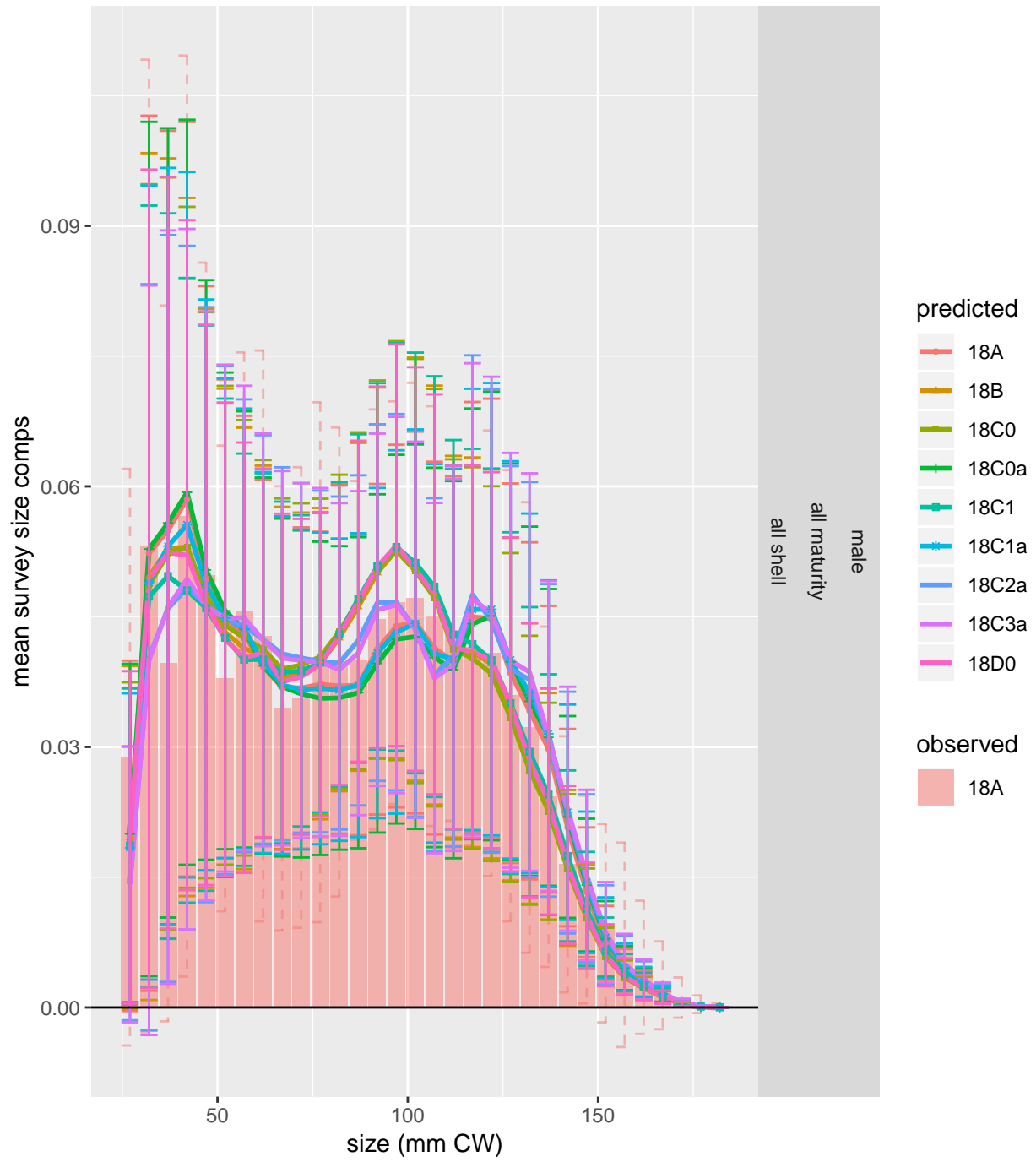


Figure 4: Comparison of observed and predicted mean survey size comps for NMFS (males by X).

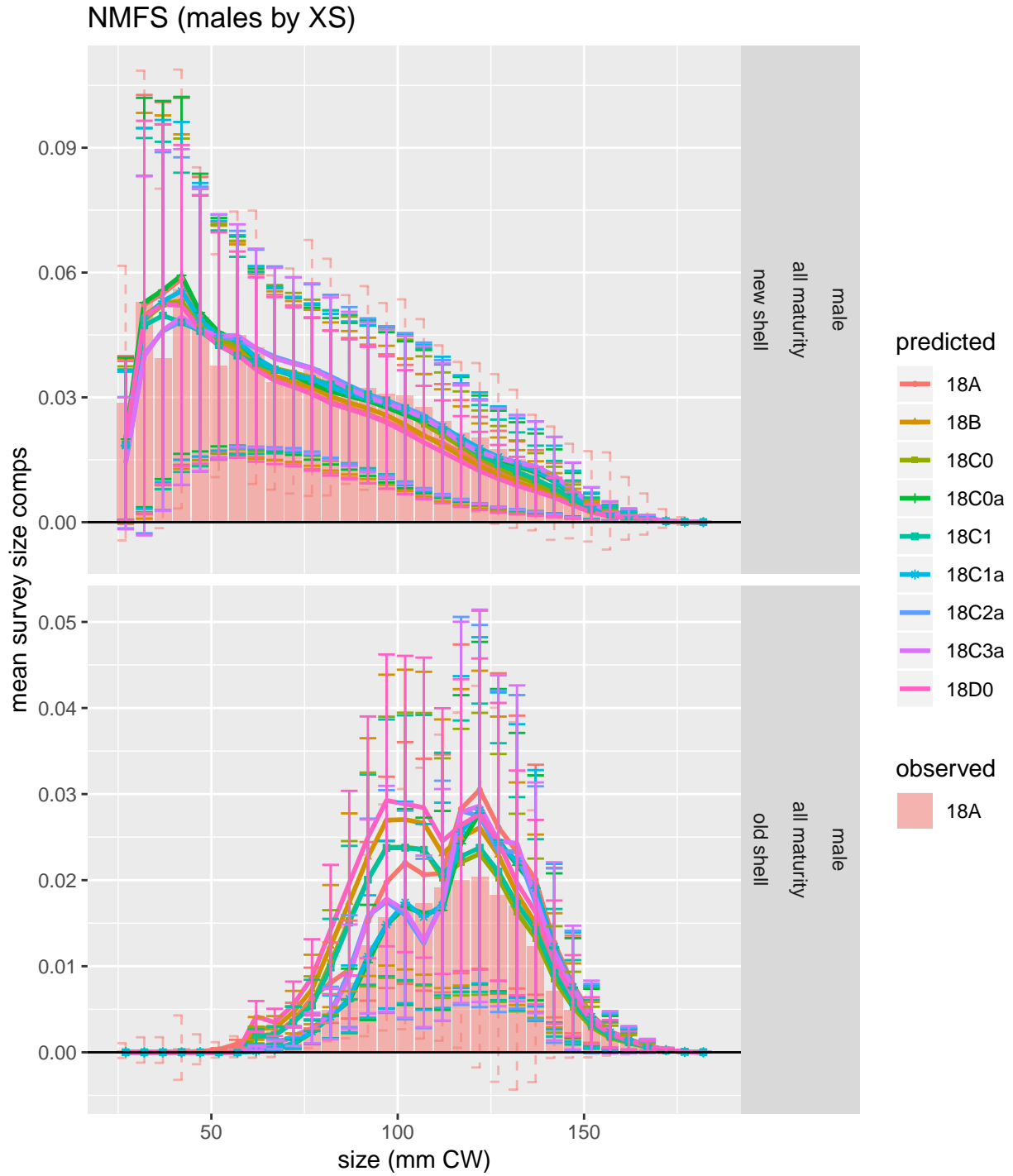


Figure 5: Comparison of observed and predicted mean survey size comps for NMFS (males by XS).

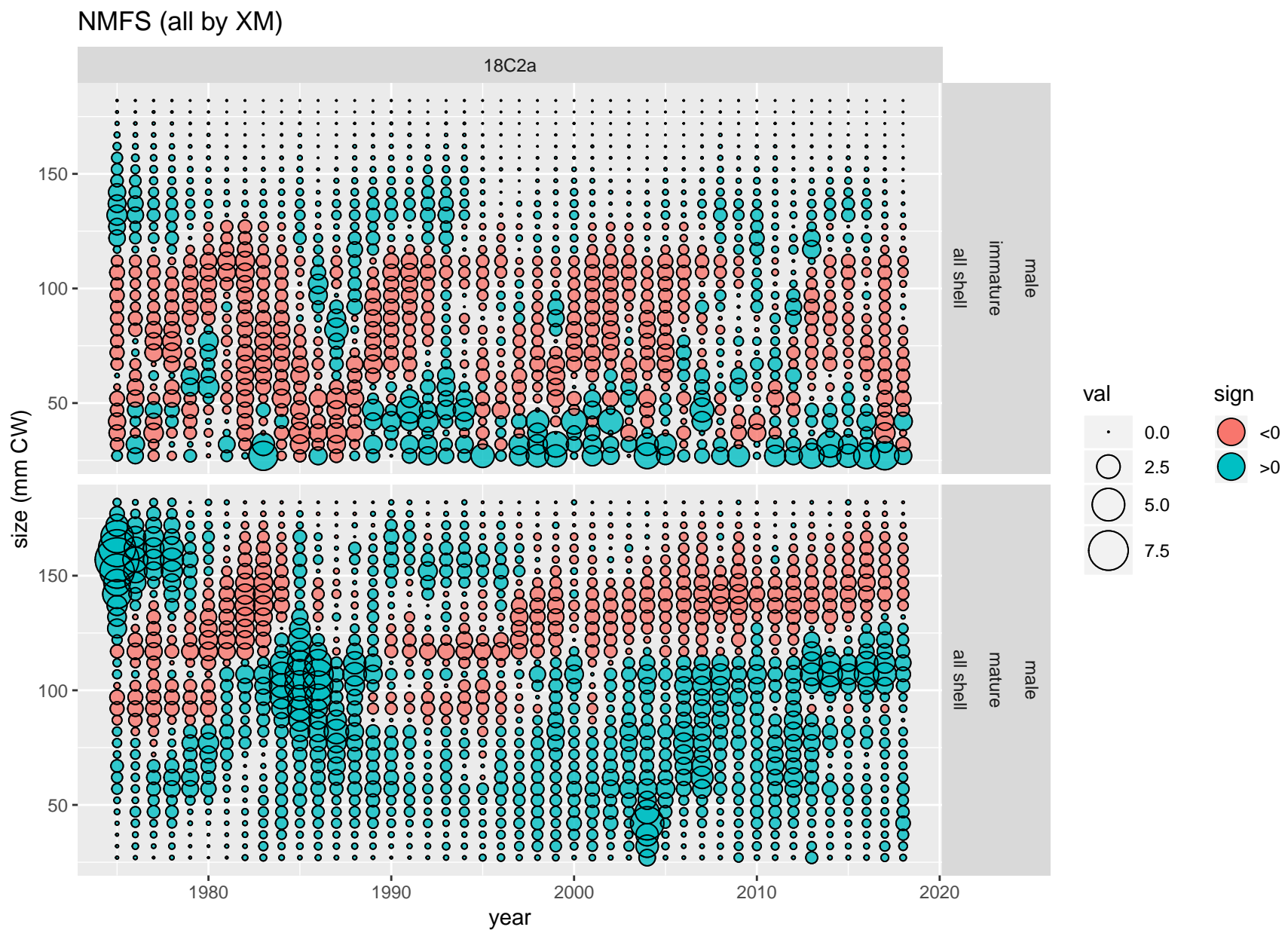


Figure 6: Pearson's residuals for proportions-at-size from the NMFS (all by XM) for scenario 18C2a.

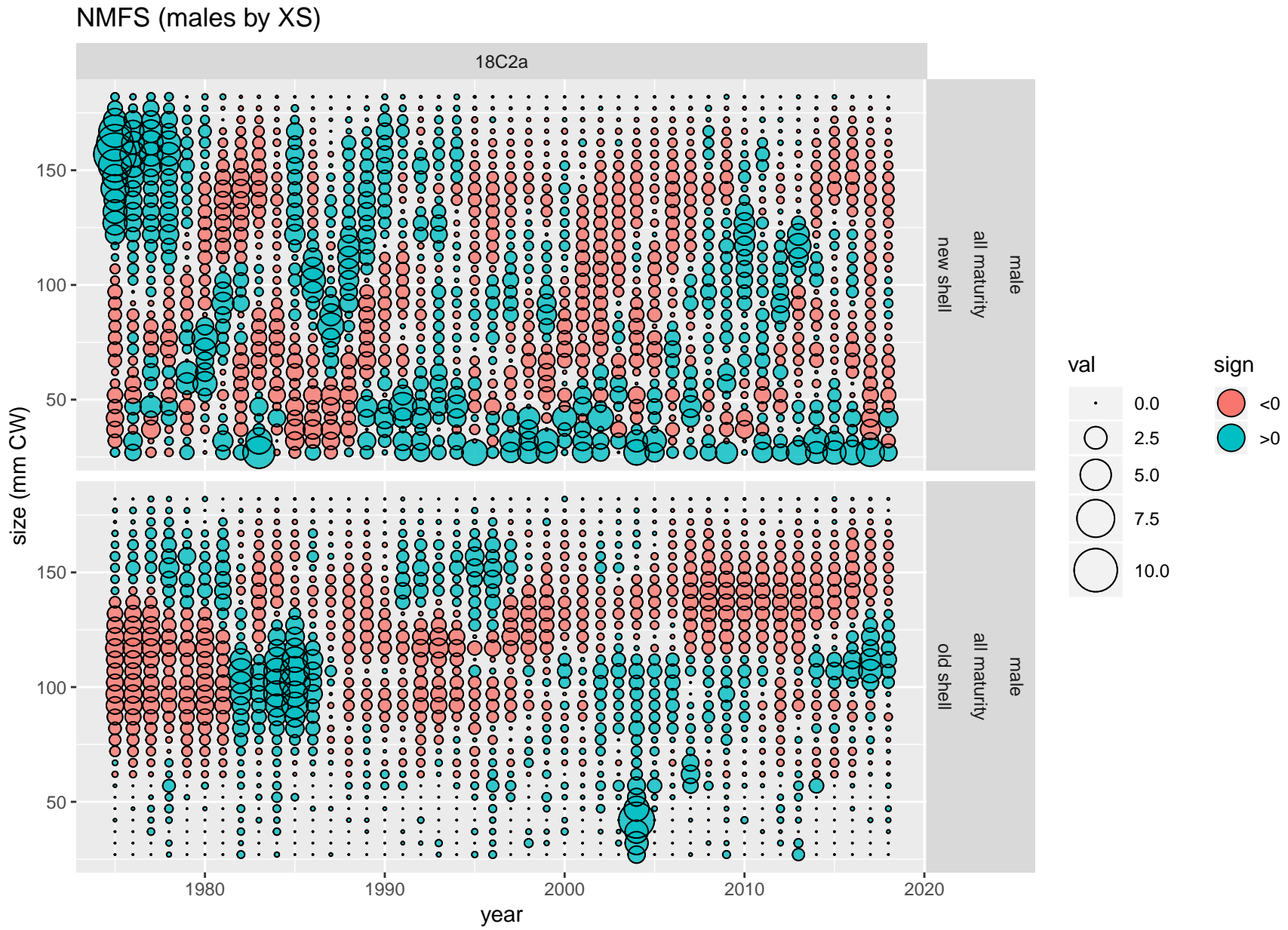


Figure 7: Pearson's residuals for proportions-at-size from the NMFS (males by XS) for scenario 18C2a.

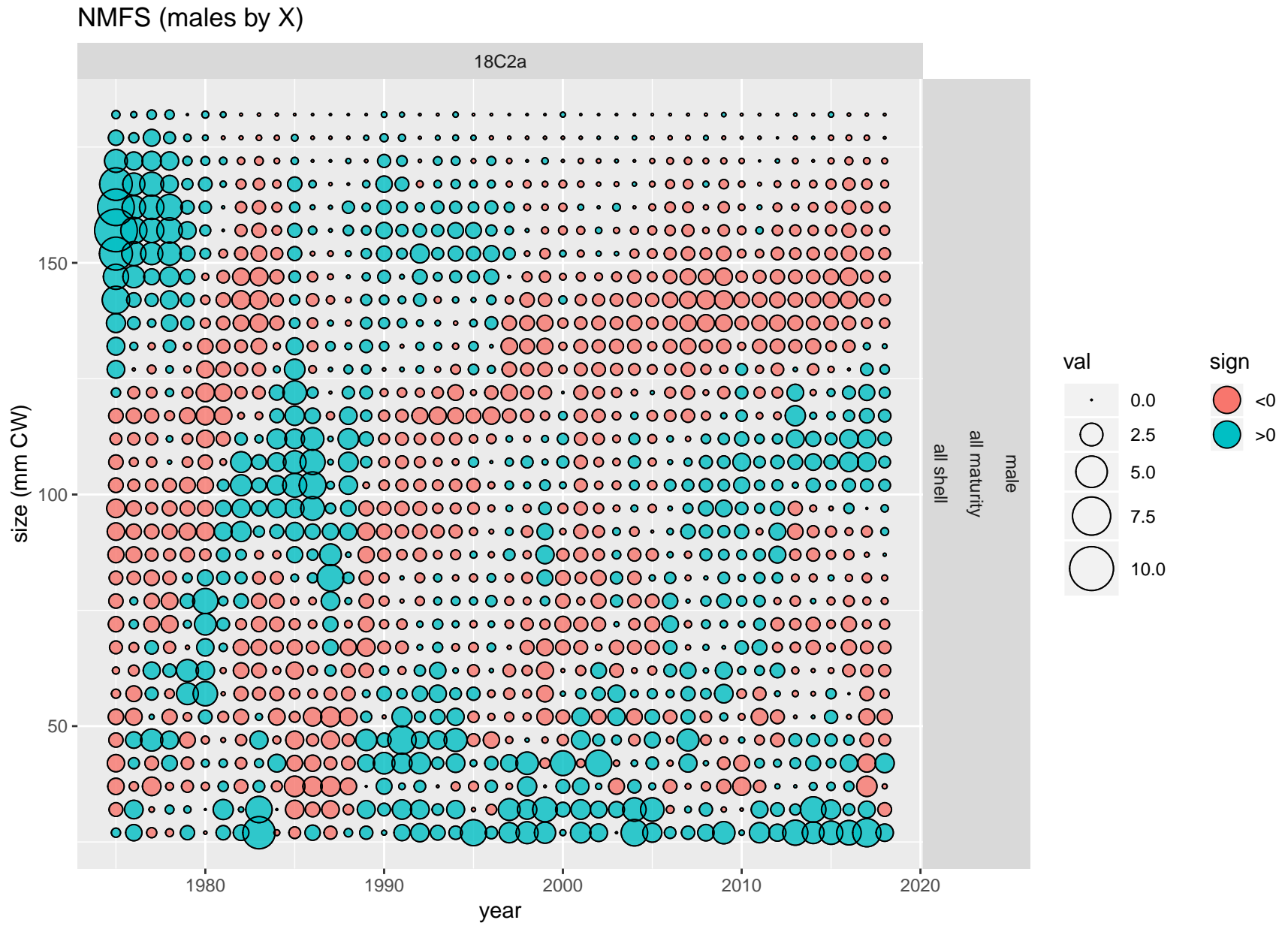


Figure 8: Pearson's residuals for proportions-at-size from the NMFS (males by X) for scenario 18C2a.

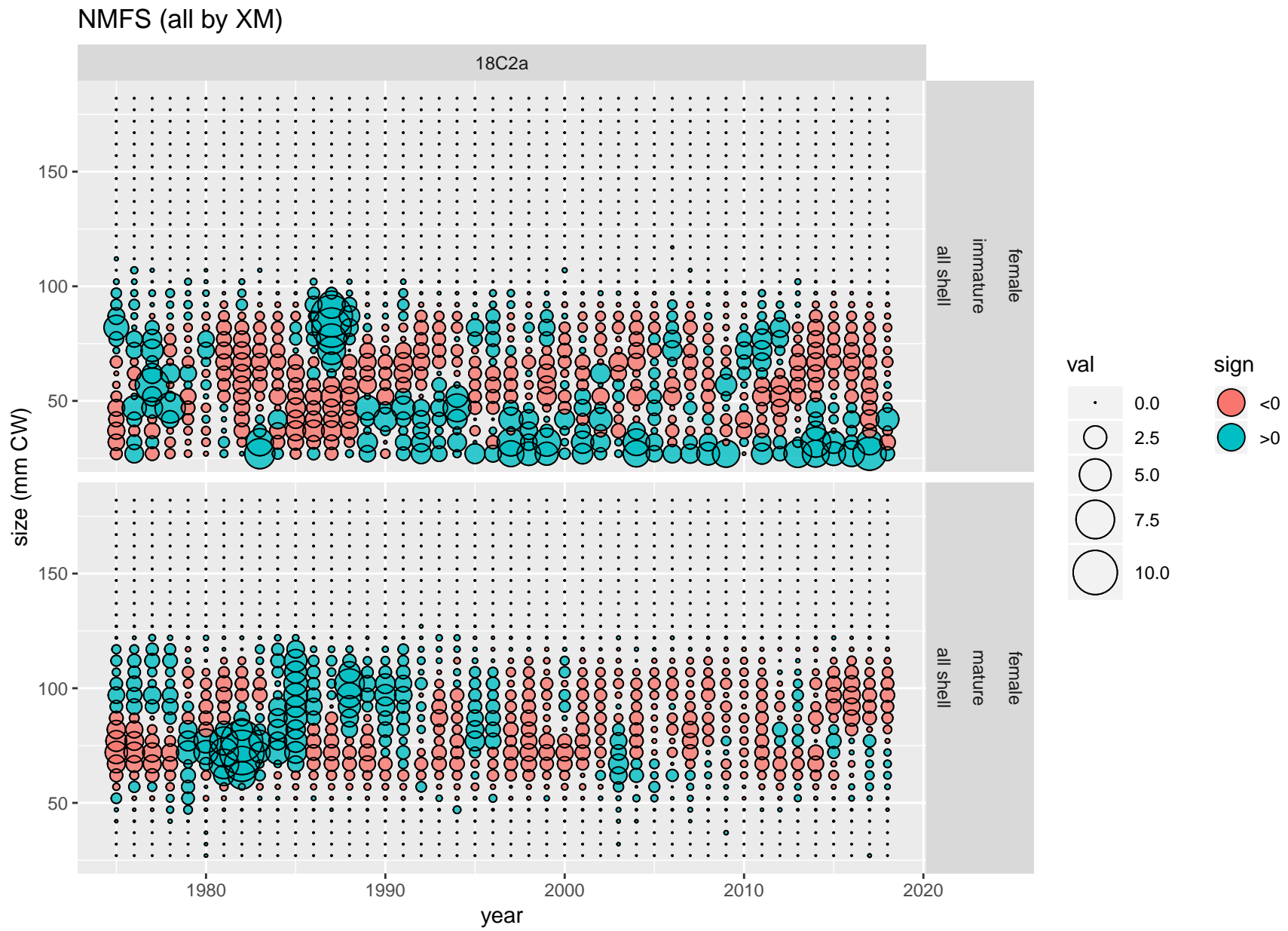


Figure 9: Pearson's residuals for proportions-at-size from the NMFS (all by XM) for scenario 18C2a.

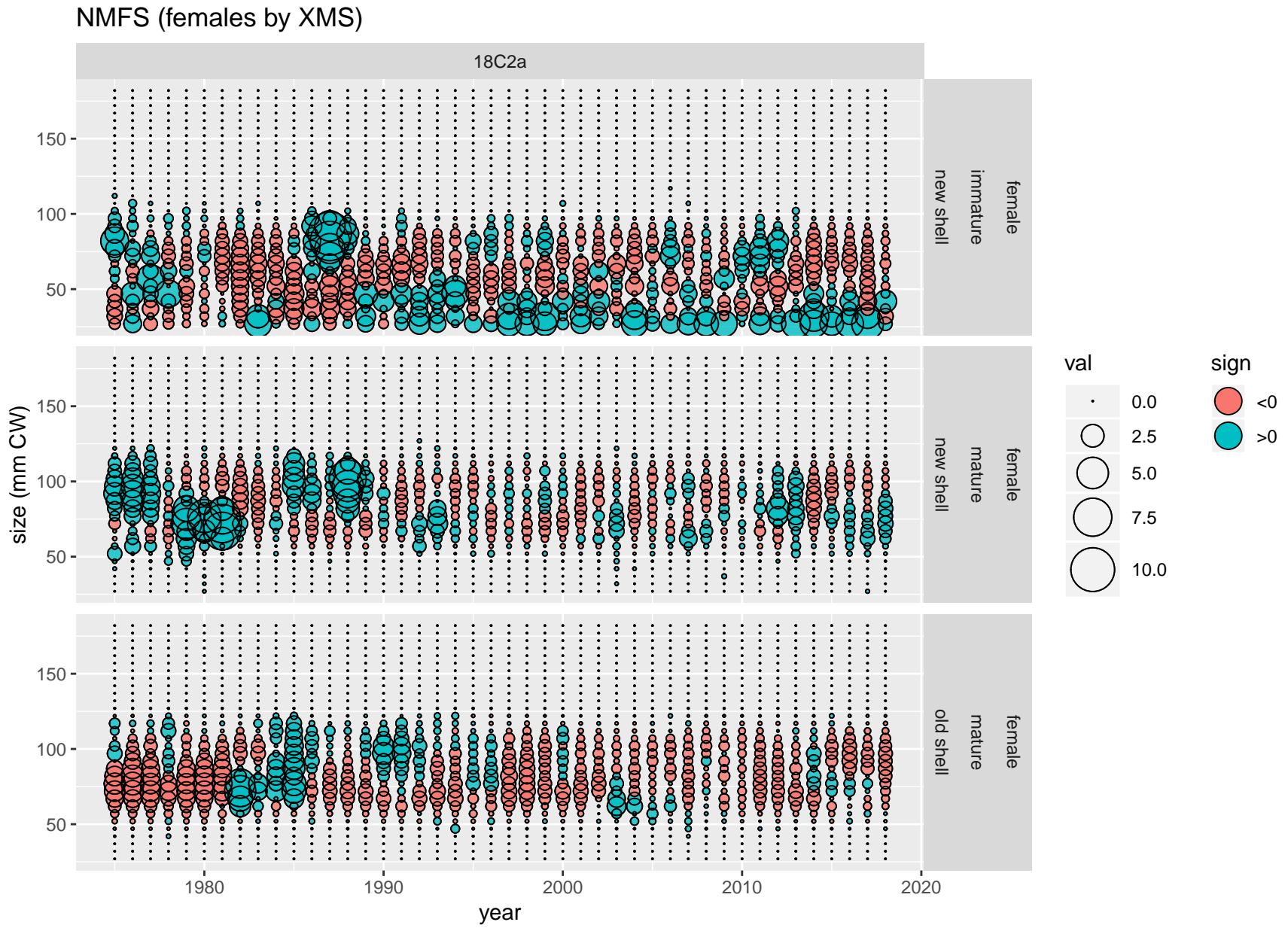


Figure 10: Pearson's residuals for proportions-at-size from the NMFS (females by XMS) for scenario 18C2a.

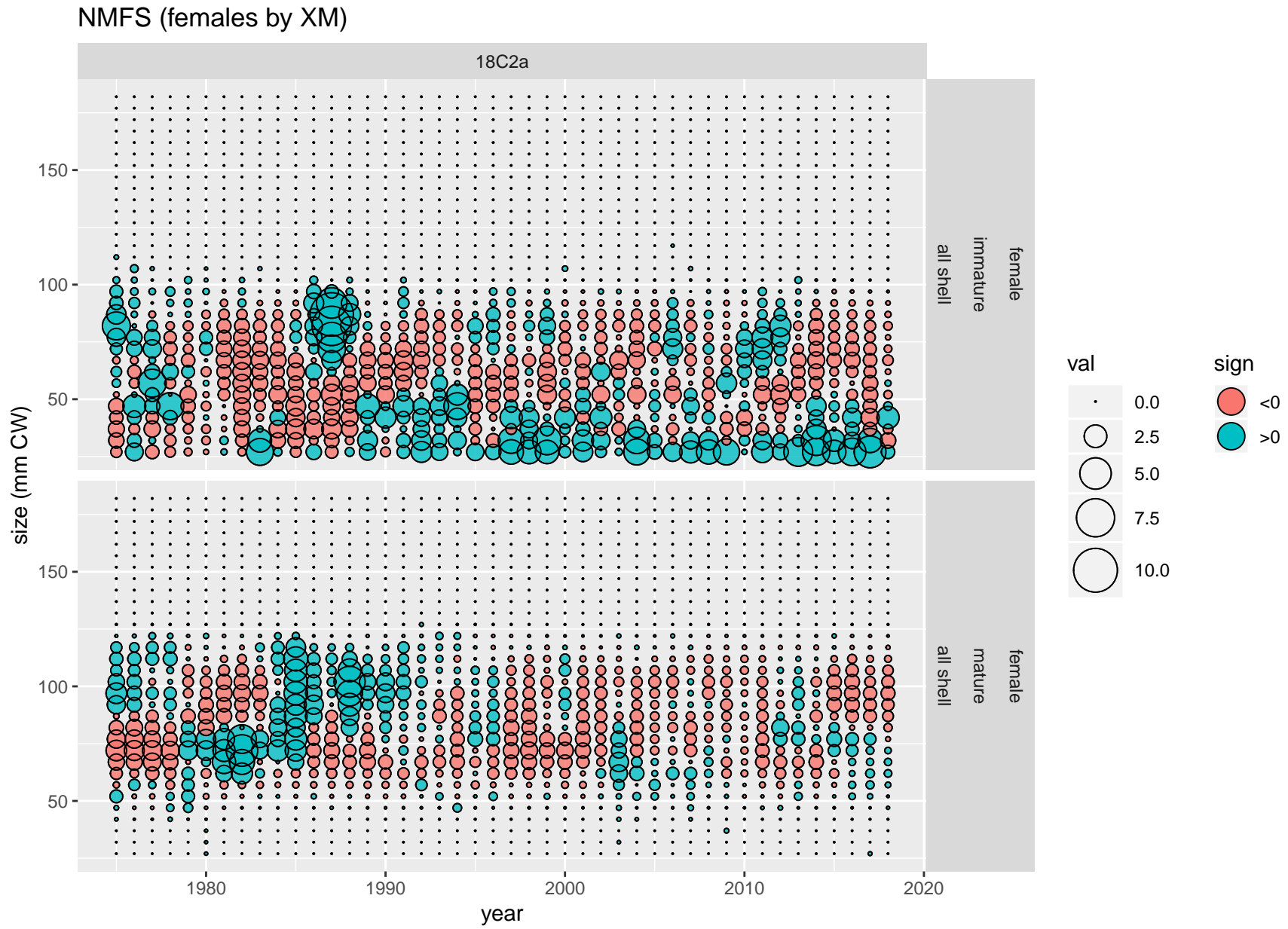


Figure 11: Pearson's residuals for proportions-at-size from the NMFS (females by XM) for scenario 18C2a.

Effective sample sizes for survey size compositions

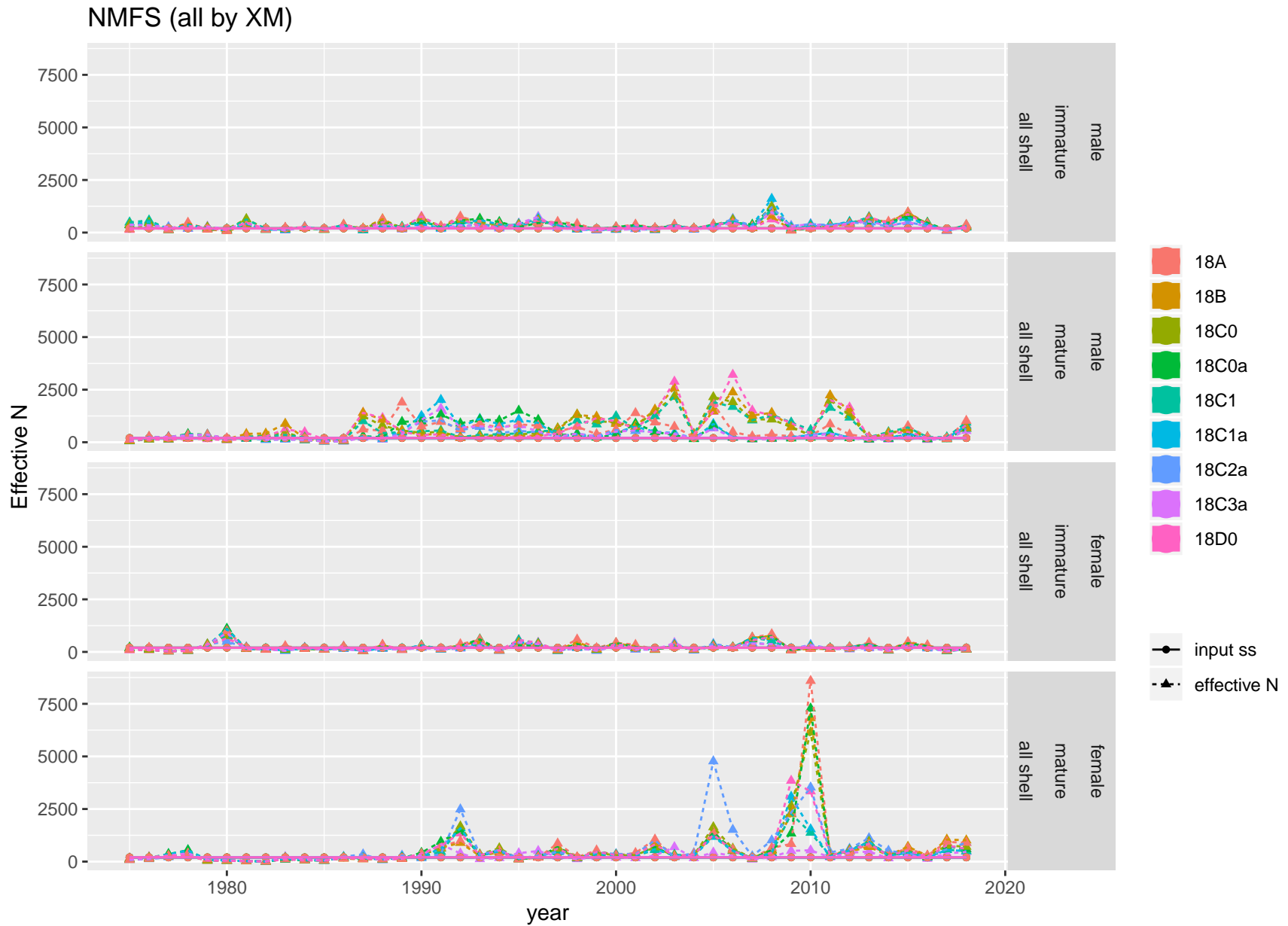


Figure 12: Input and effective sample sizes from retained catch size compositions from the NMFS (all by XM).

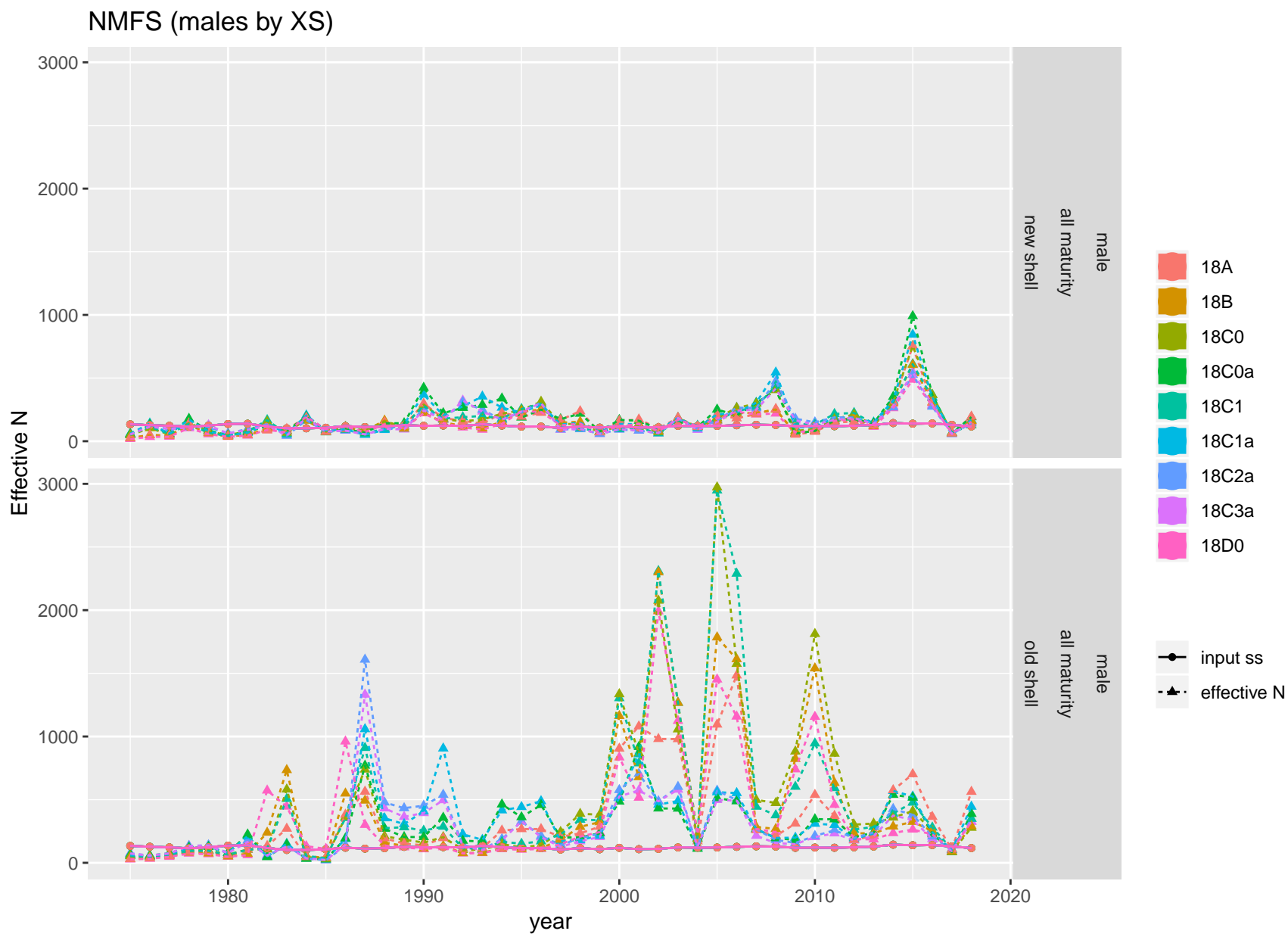


Figure 13: Input and effective sample sizes from retained catch size compositions from the NMFS (males by XS).

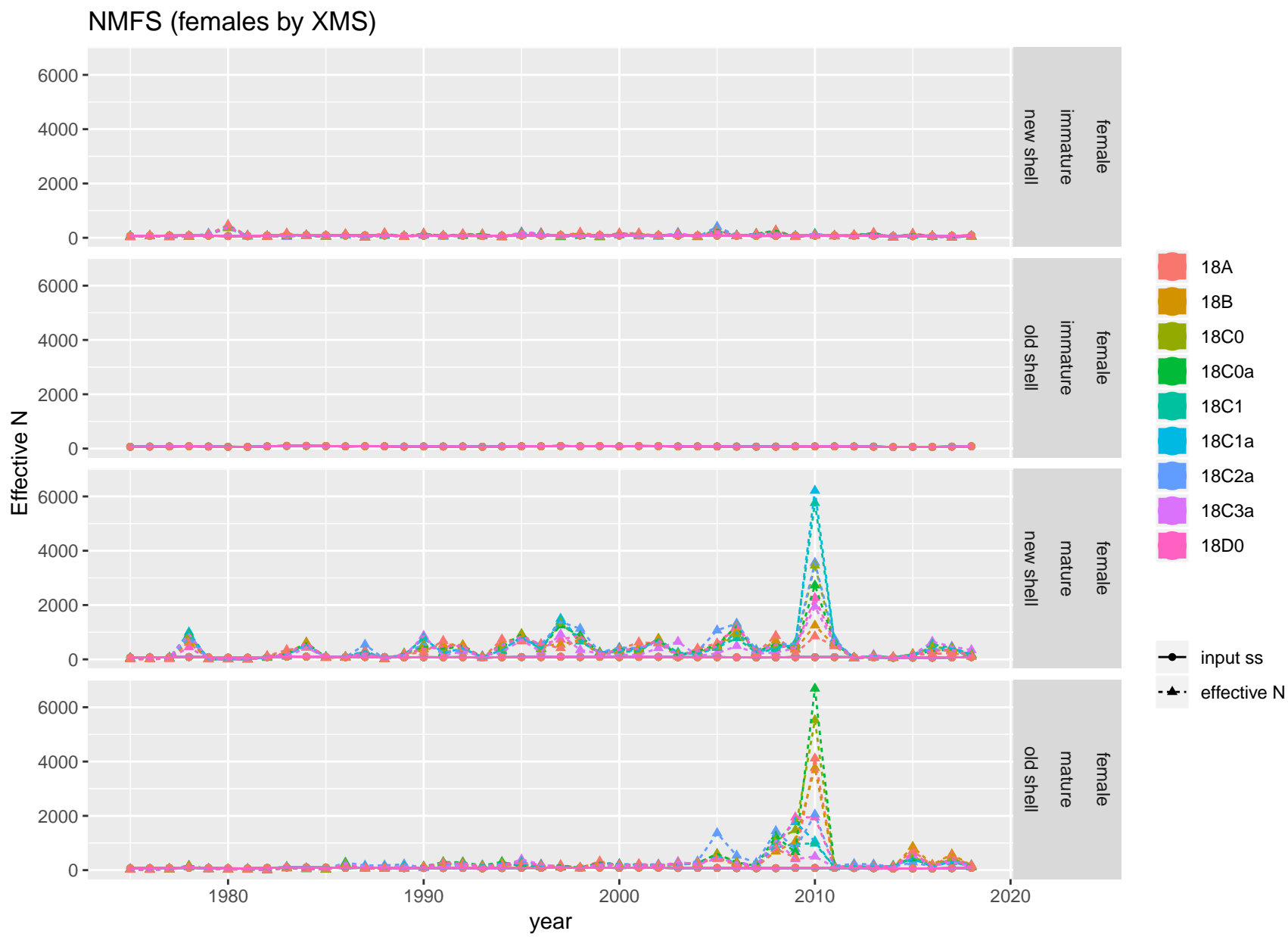


Figure 14: Input and effective sample sizes from retained catch size compositions from the NMFS (females by XMS).

NMFS (males by X)

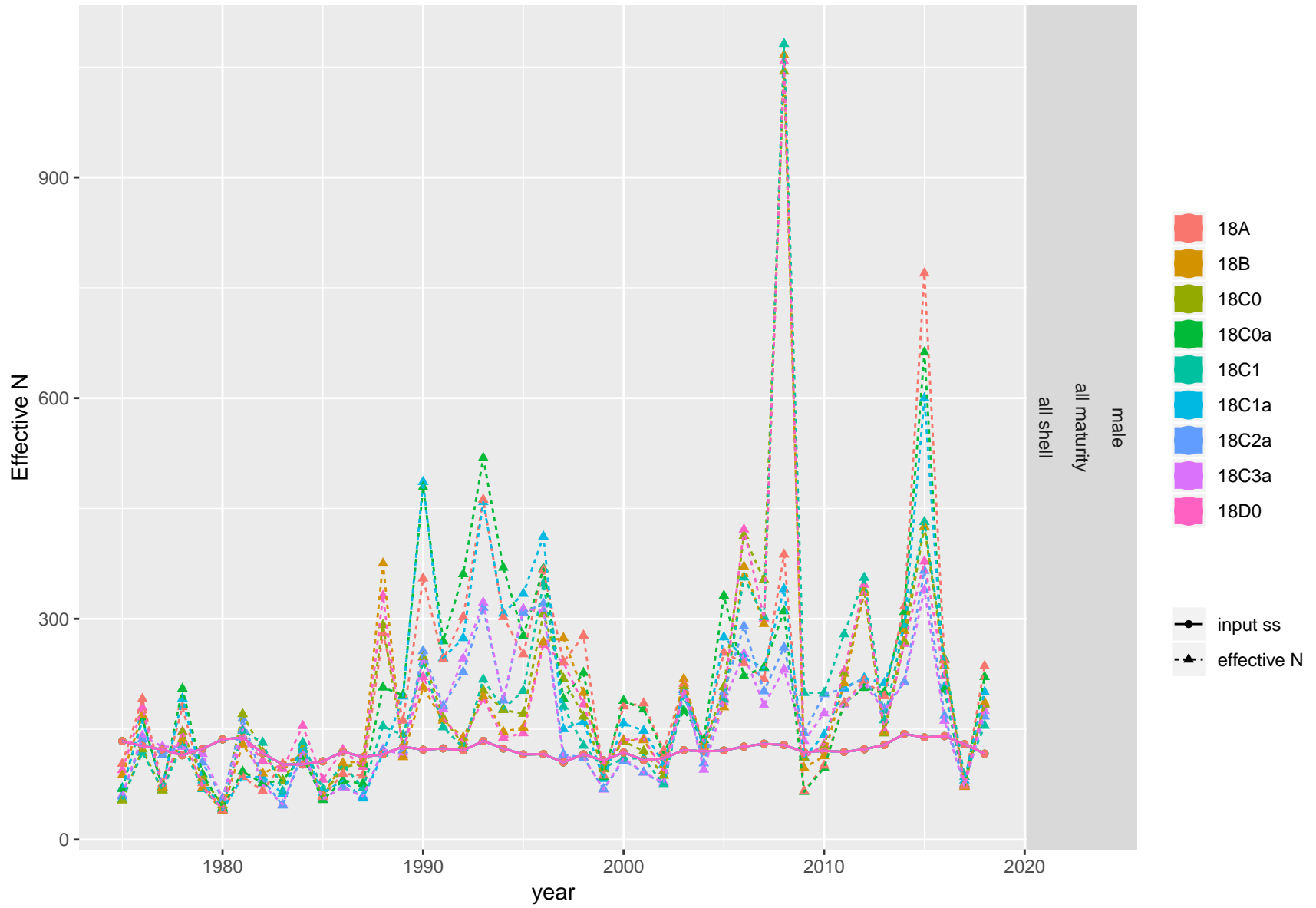


Figure 15: Input and effective sample sizes from retained catch size compositions from the NMFS (males by X).

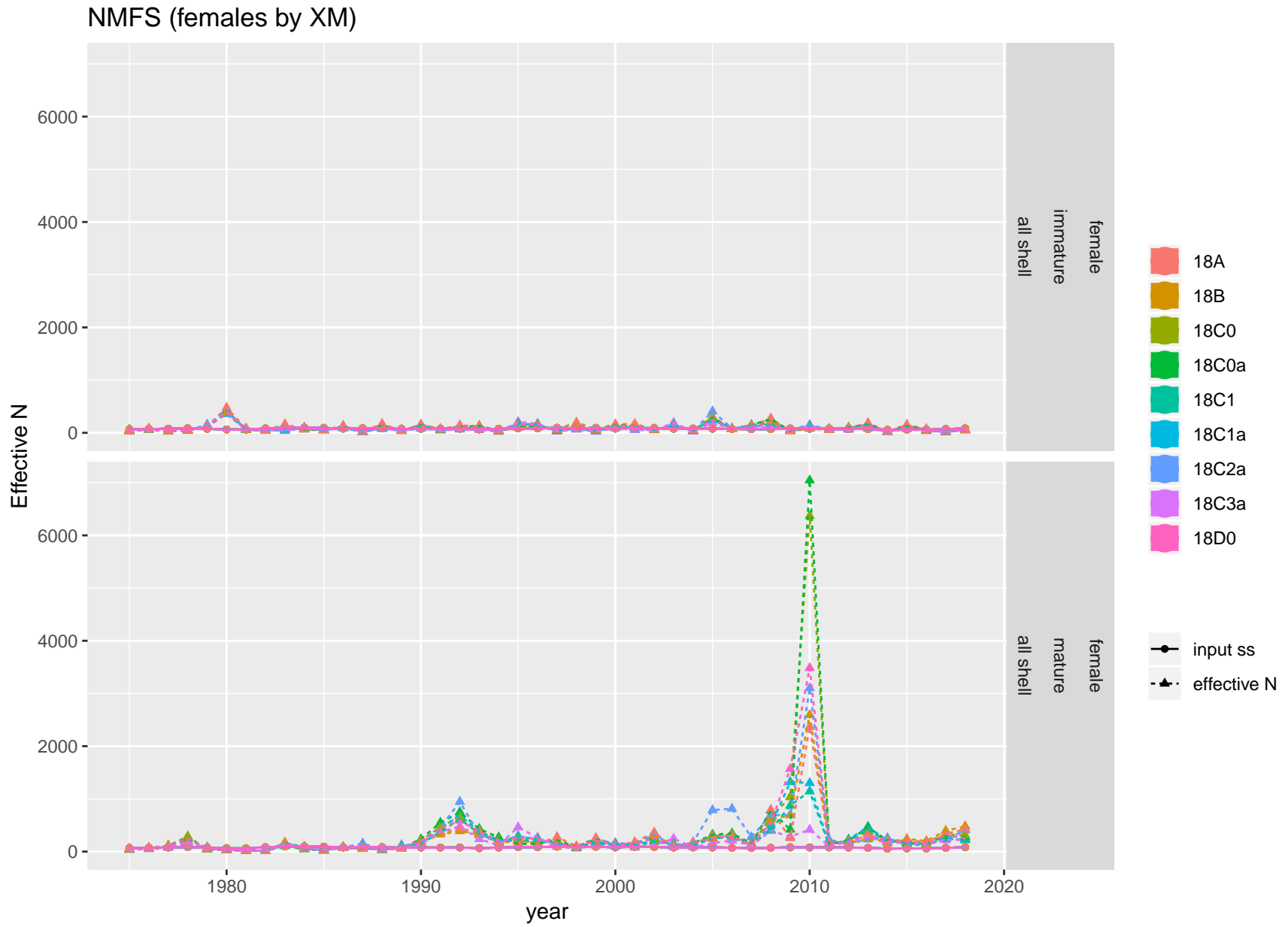


Figure 64: Input and effective sample sizes from retained catch size compositions from the NMFS (females by XM).