

North Pacific Fishery Management Council Meeting

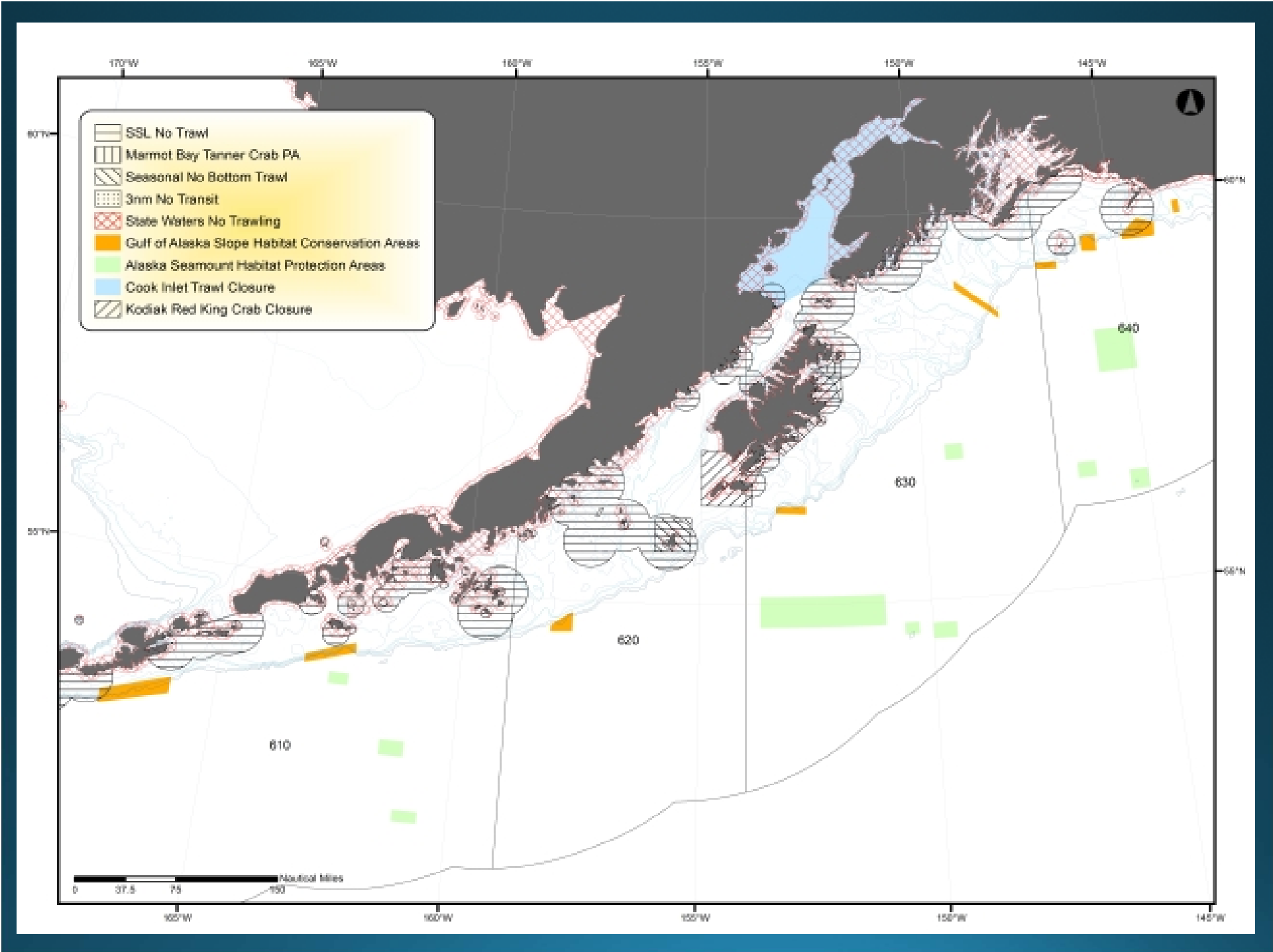
June 2017

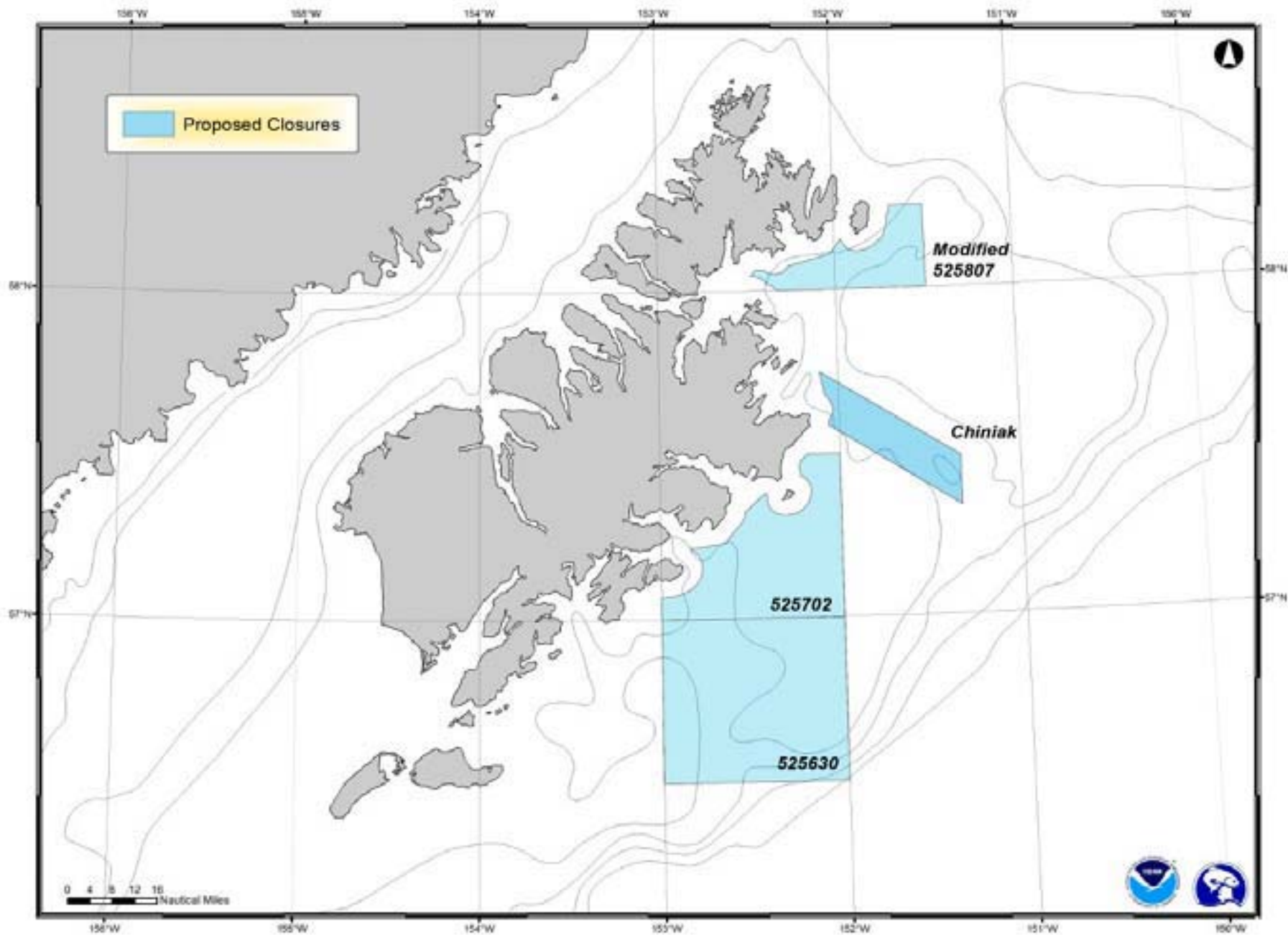
Juneau

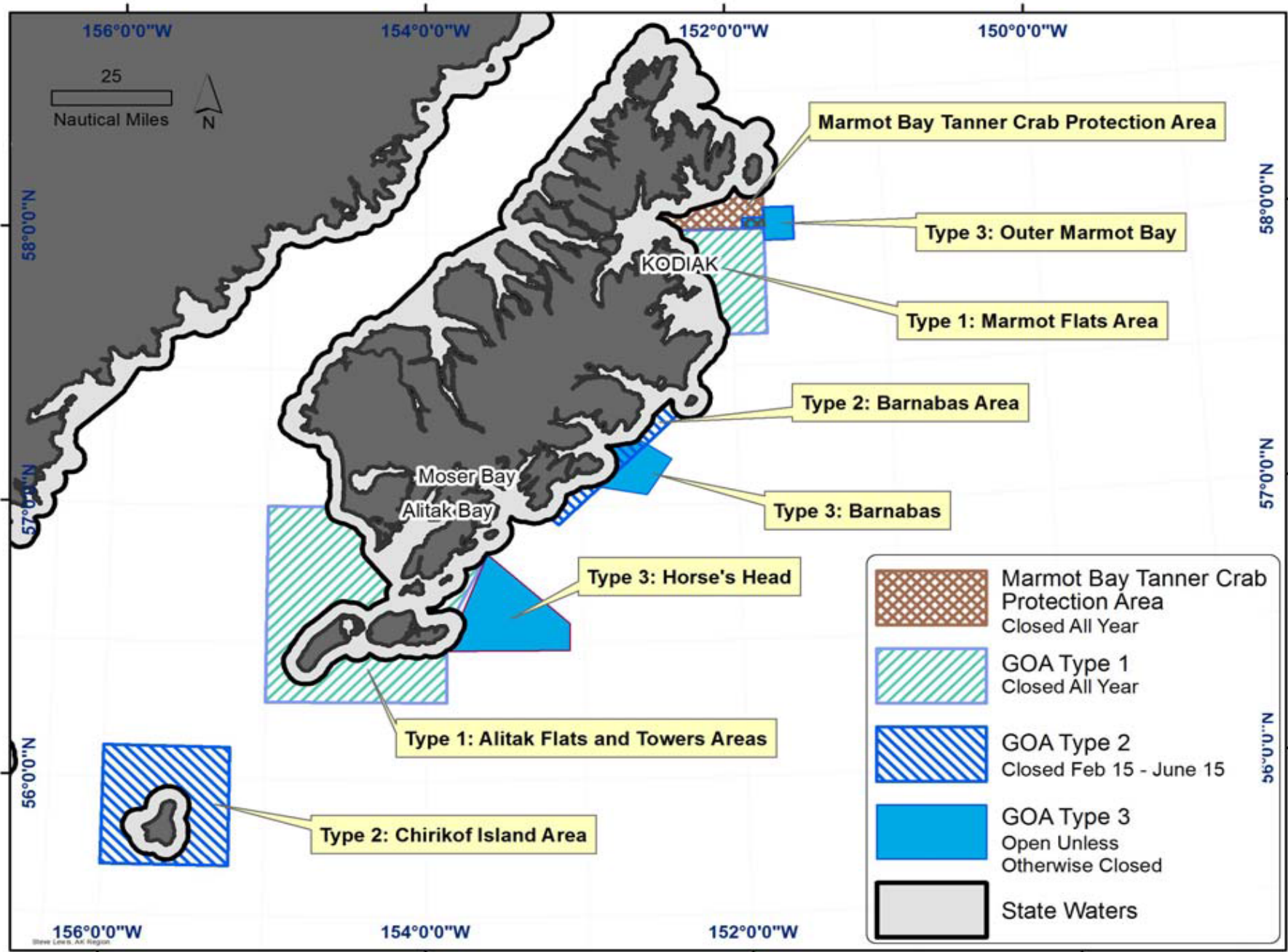
D2 - Crab Habitat Protections in CGOA

Outline

- Indirect Tanner Crab Protections in the CGOA
- Direct Federal Tanner Crab Protections
- State of Alaska Protections of Tanner Crab in CGOA
- History of the CGOA Tanner crab fishery
- Update on Tanner Crab Habitat, Abundance, and Distribution
- Summary







156°0'0"W 154°0'0"W 152°0'0"W 150°0'0"W



58°0'0"N
57°0'0"N
56°0'0"N

58°0'0"N
57°0'0"N
56°0'0"N

KODIAK

Moser Bay

Alitak Bay

Marmot Bay Tanner Crab Protection Area

Type 3: Outer Marmot Bay

Type 1: Marmot Flats Area






Type 2: Barnabas Area

Type 3: Barnabas

Type 3: Horse's Head

Type 1: Alitak Flats and Towers Areas

Type 2: Chirikof Island Area

-  Marmot Bay Tanner Crab Protection Area
Closed All Year
-  GOA Type 1
Closed All Year
-  GOA Type 2
Closed Feb 15 - June 15
-  GOA Type 3
Open Unless Otherwise Closed
-  State Waters

156°0'0"W

154°0'0"W

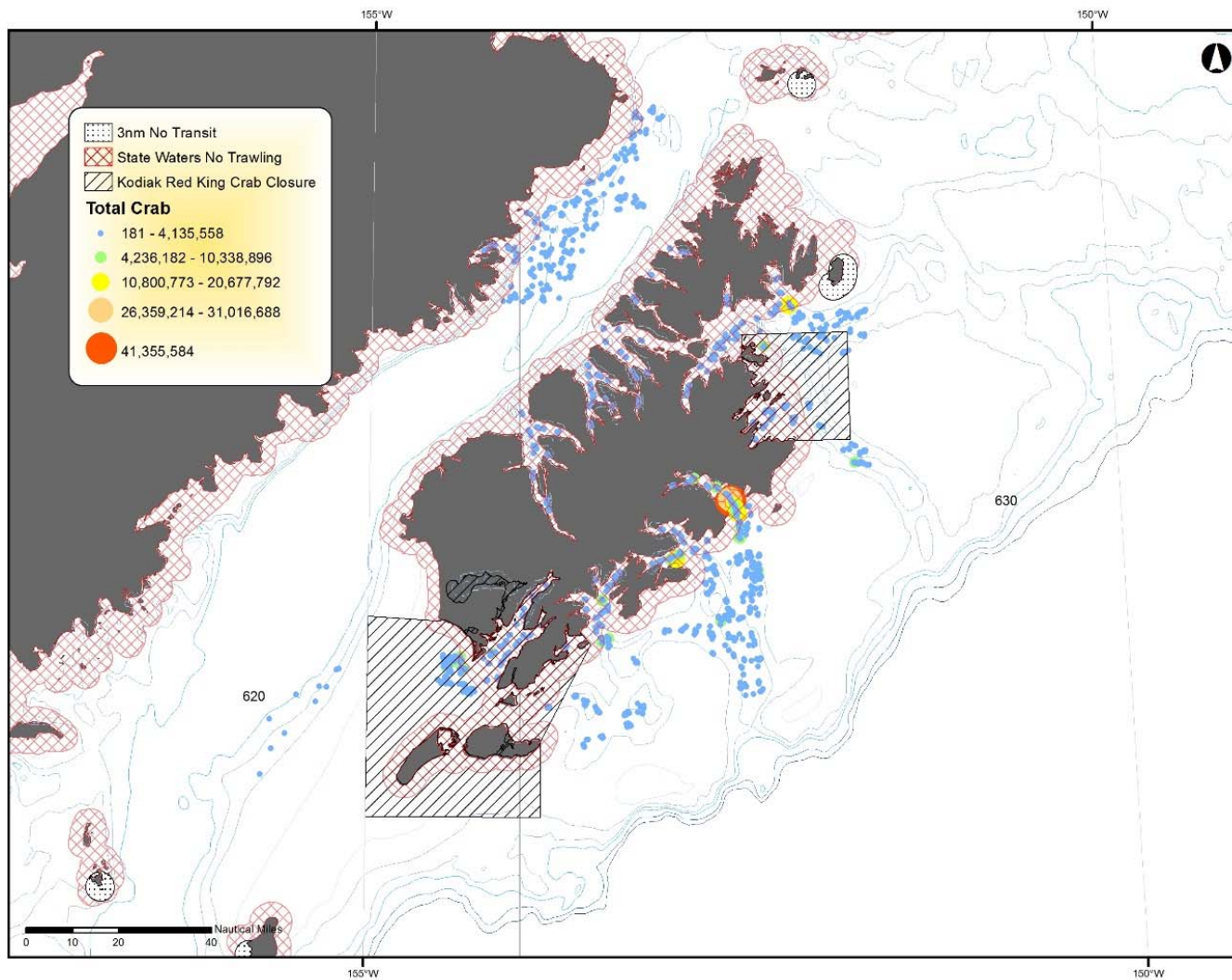
152°0'0"W

Show Legend, All Regions

Tanner Crab Abundance (all sizes)

Year	Northeast	Eastside	Southeast	Southwest	Westside	North Mainland	Kodiak District
2003	13,443,591	36,166,904	6,058,690	3,141,350	4,593,172	7,013,798	70,417,505
2004	16,321,335	26,352,608	12,333,843	3,575,099	1,804,194	10,356,807	70,743,886
2005	17,403,505	19,113,246	10,974,042	3,011,422	3,947,639	13,226,334	67,676,188
2006	21,906,413	68,461,704	33,083,614	15,342,283	9,334,219	16,914,410	165,042,643
2007	18,653,830	98,433,348	35,342,446	25,861,206	4,582,398	3,382,721	186,255,949
2008	21,179,965	50,858,092	10,731,234	23,520,341	8,397,115	4,825,933	119,512,680
2009	16,992,570	39,006,970	7,768,620	9,716,347	5,623,343	5,283,555	84,391,405
2010	14,636,198	28,316,042	13,703,955	10,695,866	3,448,153	5,527,360	76,327,574
2011	5,087,405	20,520,713	8,040,692	2,980,159	2,829,698	15,908,038	55,366,705
2012	9,824,797	13,065,652	8,661,956	3,305,464	4,212,731	5,489,937	44,560,537
2013	51,293,257	64,895,112	30,097,334	39,793,007	5,769,911	8,428,755	200,277,376
2014	18,785,815	47,163,678	23,264,259	16,249,309	4,023,535	3,821,351	113,307,947
2015	4,163,174	13,098,266	4,668,205	7,064,760	2,418,935	8,695,374	40,108,714

Tanner Crab Abundance (all sizes)

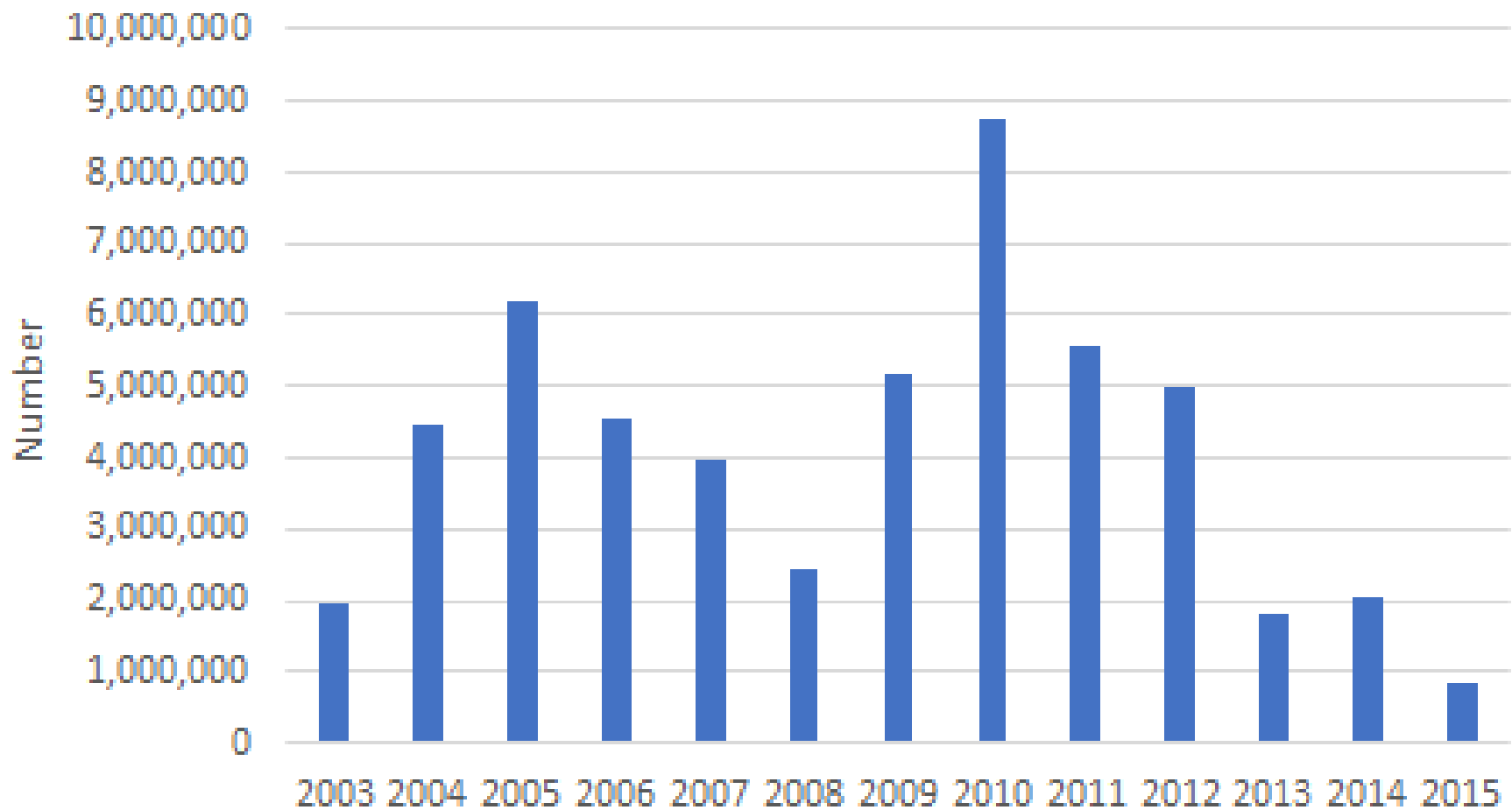


Tanner Crab Abundance (legal male)

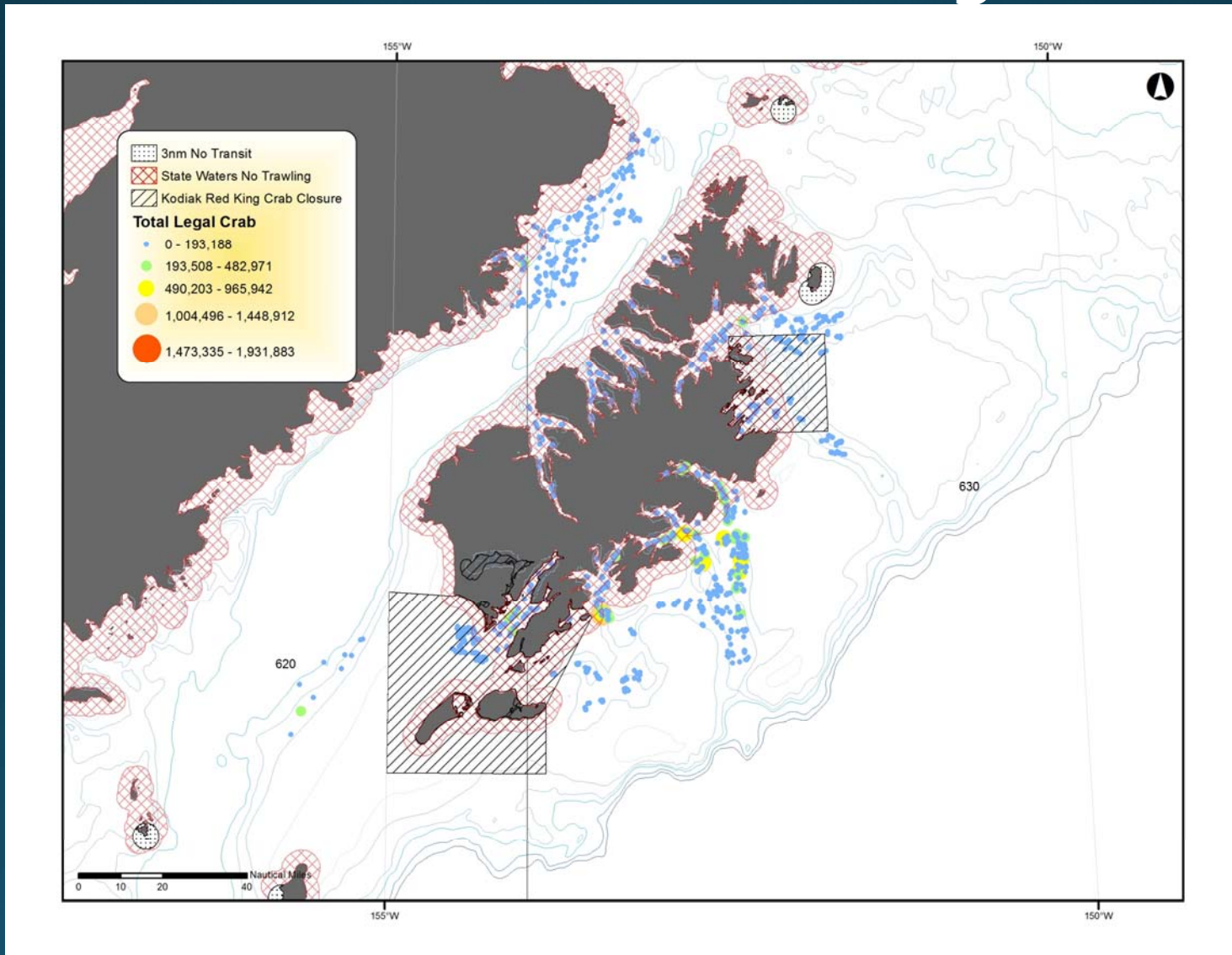
Year	Northeast	Eastside	Southeast	Southwest	Westside	North Mainland	Kodiak District
2003	507,088	747,989	154,368	213,865	239,486	79,684	1,942,480
2004	1,012,868	1,465,666	316,387	1,382,233	187,762	86,221	4,451,137
2005	1,046,453	3,735,106	318,135	827,508	179,753	89,723	6,196,678
2006	244,424	2,758,751	308,990	729,563	329,622	186,380	4,557,730
2007	342,396	1,689,456	306,590	1,216,944	271,233	136,314	3,962,933
2008	340,185	1,129,318	164,157	385,400	263,184	148,294	2,430,538
2009	687,402	2,787,271	737,020	387,610	393,196	182,846	5,175,345
2010	806,513	4,714,871	1,607,073	1,238,613	293,211	88,756	8,752,994
2011	282,944	2,434,967	1,836,691	766,008	164,607	90,561	5,575,778
2012	217,523	2,834,799	940,131	579,235	138,422	292,225	5,002,335
2013	109,389	654,455	483,354	314,928	87,740	162,128	1,811,994
2014	153,376	293,185	1,272,952	129,958	105,649	75,259	2,030,379
2015	55,923	158,439	83,254	157,933	60,195	347,703	863,447

Tanner Crab Abundance (legal male)

Kodiak District legal-size male Tanner crab



Tanner Crab Abundance (legal male)



CGOA Fleet, Harvest & Value

Year	Vessel Count	Weight Landed (lbs.)	Ex-Vessel Value (nominal \$)	Ex-Vessel Value (2016 \$)
1991	202	2,441,865	3,979,569	
1992	261	2,803,920	6,378,498	
1993	273	1,850,476	3,676,517	
1994	239	1,570,829	3,748,245	
2001	144	500,883	1,155,036	
2002	179	360,747	792,922	
2003	71	498,052	1,154,983	1,626,216
2004	66	564,089	1,382,582	1,901,051
2005	91	1,954,881	3,380,022	4,481,234
2006	71	2,145,436	3,269,507	4,302,304
2007	50	759,998	1,396,116	1,742,670
2008	33	423,589	838,283	954,937
2009	31	357,855	644,139	726,721
2010	52	641,525	1,016,176	1,103,142
2011	84	1,872,972	5,557,917	5,585,687
2012	77	1,487,132	4,277,653	4,308,252
2013	59	644,694	1,740,029	1,754,986
Total	603	20,878,943	44,388,194	
Average	117	1,228,173	2,611,070	
Median	77	759,998	1,740,029	

Tanner Crab PSC – 2003 2016

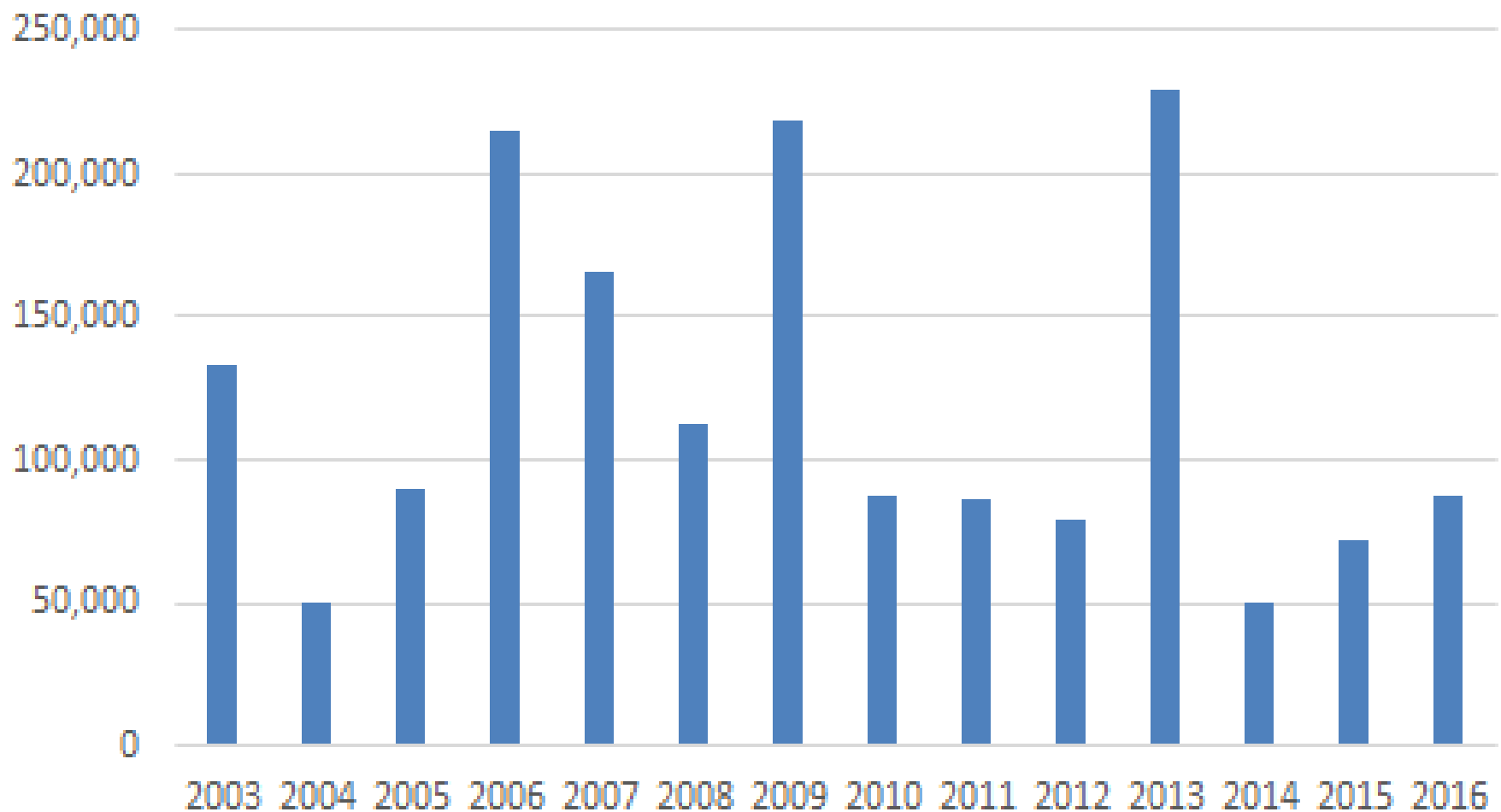
Year	HAL	NPT	POT	PTR	Total
2003	19	135,381	9,191	108	144,699
2004	1	53,017	10,064	650	63,731
2005	1,251	91,906	89,087	136	182,380
2006	503	223,783	78,241	390	302,917
2007	123	196,382	167,300	1,298	365,103
2008	1,523	127,221	138,188	37	266,968
2009	430	227,148	20,495	4	248,078
2010	1,065	88,317	101,597	19	190,997
2011	5,441	96,756	11,906	1	114,104
2012	2,615	82,478	111,922	371	197,385
2013	884	239,742	320,411	1,349	562,386
2014	152	63,490	35,462	0	99,105
2015	167	75,664	63,804	124	139,759
2016	220	91,336	31,460	0	123,016
Total	14,393	1,792,621	1,189,128	4,487	3,000,629

Tanner Crab PSC – 2003 2016

Year	ATF	SWF	Rex	Flathd	Poll-NPT	Pcod	Rockfish	Sablefish	Other	Poll-Mid	Total
2003	28,189	58,618	29,467	17,383	0	1,532	171	0	20	1	135,381
2004	33,265	8,583	5,888	2,315	555	894	1,517		0	0	53,017
2005	66,944	5,946	4,398	12,540		270	1,620		189	0	91,906
2006	87,179	33,120	70,913	23,473	7,744	532	822	0			223,783
2007	41,865	78,474	44,797	24	19,346	11,629	71	169	7	0	196,382
2008	34,553	23,100	47,993	6,515	233	14,529	62	176	59	0	127,221
2009	39,866	30,020	141,324	7,647	6,558	1,456	205	71	2		227,148
2010	46,414	21,515	14,235	5,067	87	860	83	55		0	88,317
2011	70,620	5,311	5,902	4,704	10,193	1	25	0		0	96,756
2012	72,575	3,783	0	2,996	357	2,699	68	0	0	0	82,478
2013	99,202	118,603	750	11,235	6,625	3,287	40	0		0	239,742
2014	39,225	10,488	233	0	2,041	11,331	173	0		0	63,490
2015	6,643	62,251	81	3,225	2,216	1,223	0	25		0	75,664
2016	77,209	10,398	0	299	3,412	18	0	0	0	0	91,336
Total	743,749	470,209	365,980	97,422	59,367	50,262	4,857	496	278	1	1,792,621

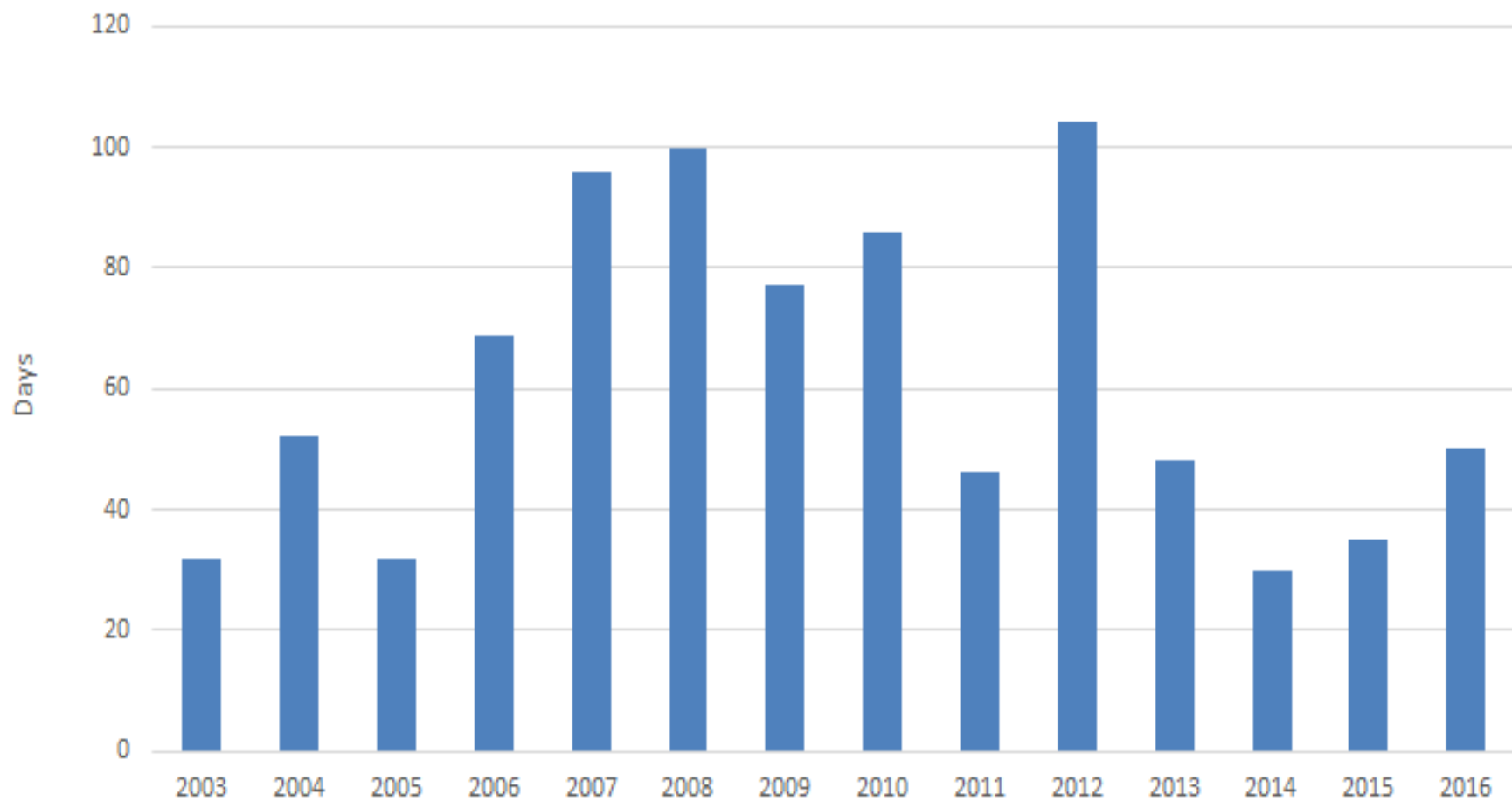
Tanner Crab PSC – 2003 2016

Tanner PSC in Area CGOA NPT flatfish

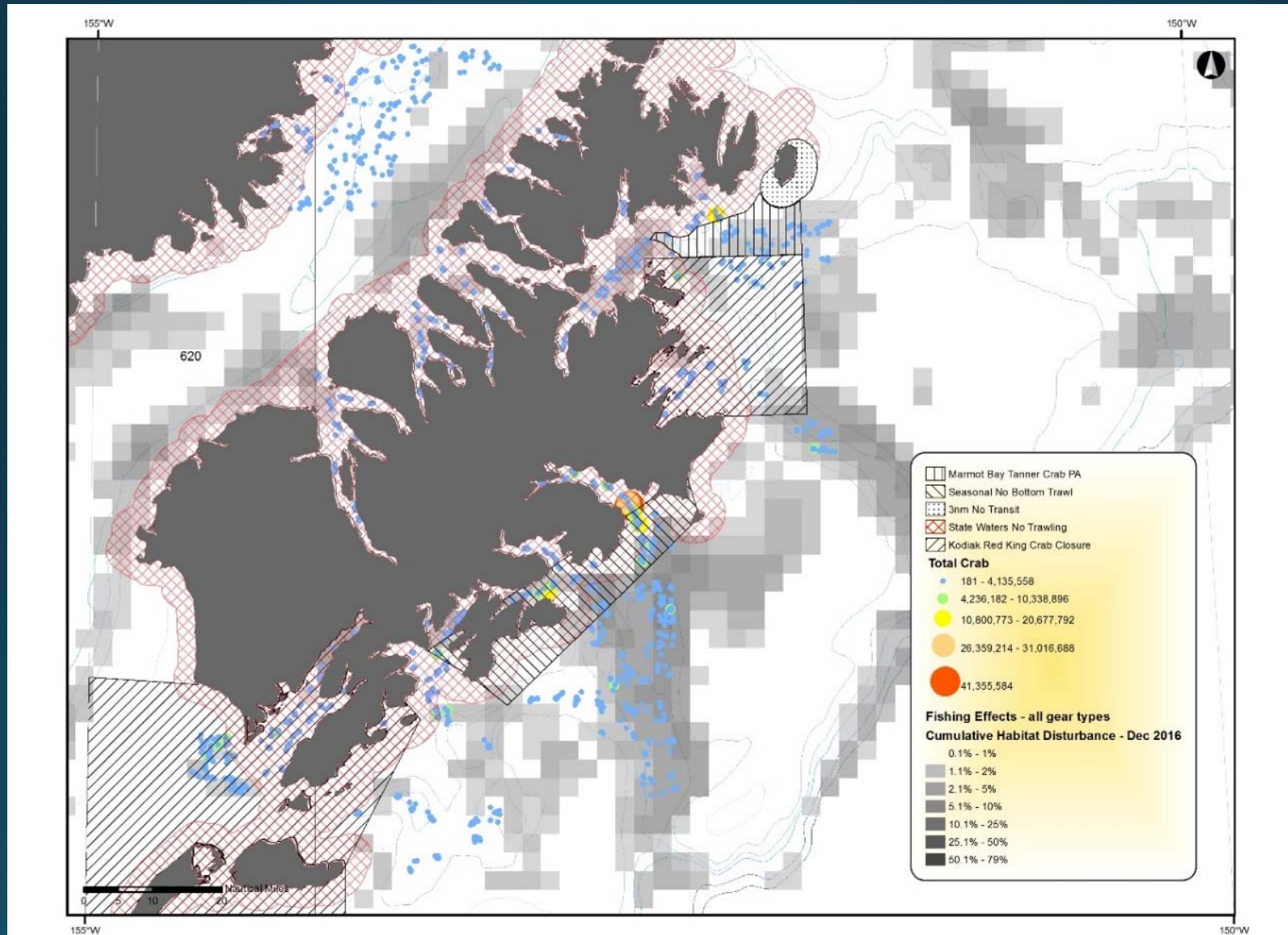


Tanner Crab PSC – 2003 2016

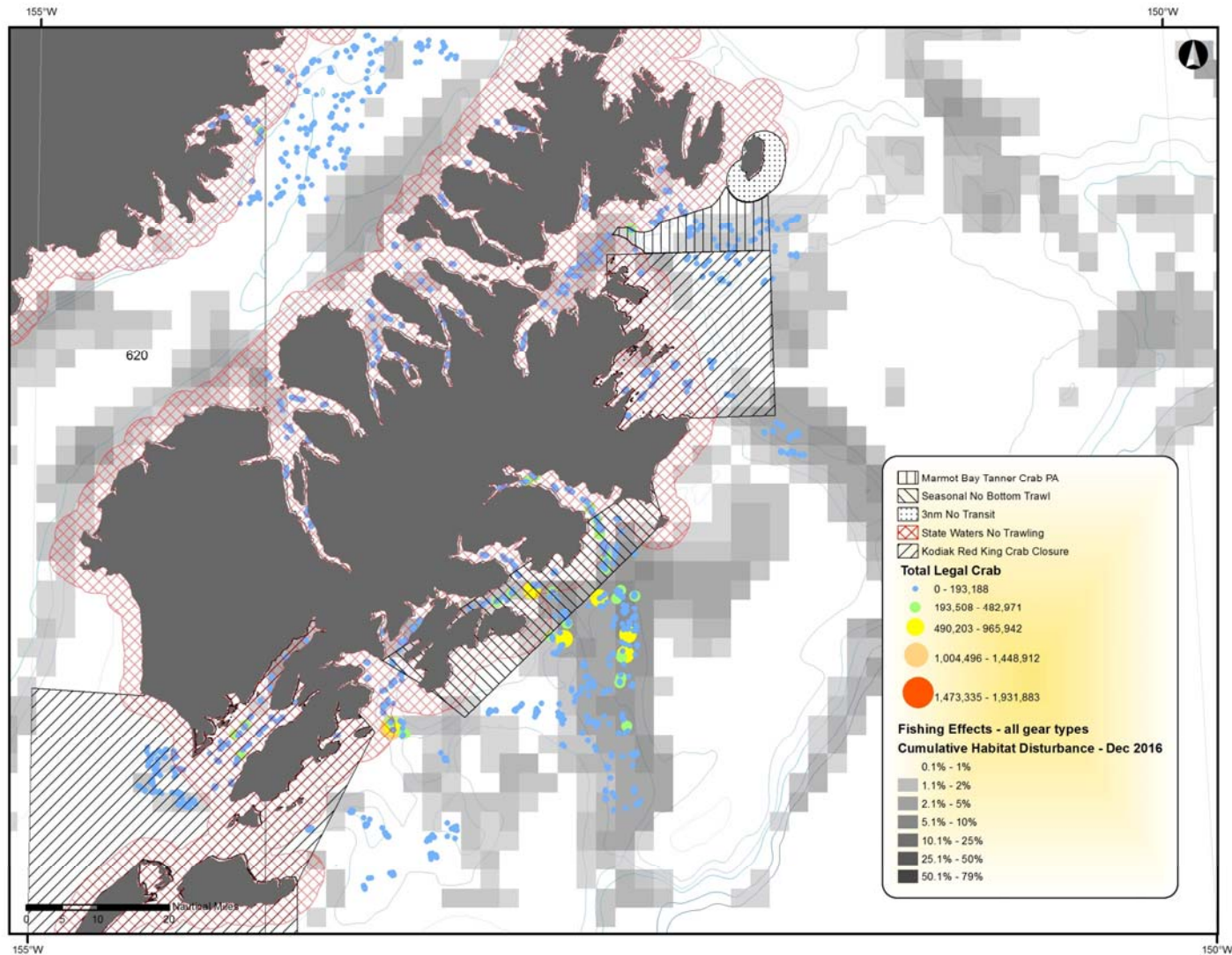
N Obs NPT Vessel Days in Stat Areas 525703, 525630



Tanner crab and gear activity (all sizes)



Tanner crab and gear activity (legal male)



Questions?