

2009 catch is through September 19 and 2008 catch is through September 20 unless otherwise stated.

Bering Sea and Aleutian Islands

Bering Sea Pollock

The 2009 B season opened June 10 with allocations of 211,248 mt for inshore processors, 168,998 mt for catcher/processors (CPs), 42,240 mt for motherships, and 48,900 mt for CDQ. Thirteen CPs (16 in 2008), 13 catcher vessels delivering to motherships, and 68 catcher vessels (68 in 2008) delivering to inshore processors participated. Motherships mostly finished their B season by August 15, and the CP and inshore sectors are projected to finish around October 1.

Salmon in the pollock fishery

The 2009 catch is 11,857 non-CDQ and 444 CDQ Chinook salmon compared to the 2008 catch of 16,900 non-CDQ and 637 CDQ Chinook salmon. For non-Chinook salmon, the 2009 catch was 42,972 non-CDQ and 947 CDQ compared to the 2008 catch of 13,057 non-CDQ and 419 CDQ. In 2009 the Chinook Salmon Savings Area remains open.

BSAI Trawl groundfish catch (metric tons)

The 2009 trawl catch is less than the 2008 trawl catch for the same time period. The decrease for non-pelagic trawl is about 6% and pelagic trawl is about 14%.

Year	NPT CV	NPT CP	PTR CV	PTR CP	Total
2009	34,533	269,279	427,958	284,025	1,015,795
2008	38,584	285,770	497,430	327,363	1,149,147

Trawl halibut mortality

The 2009 total trawl halibut mortality is 16% higher than the 2008 total. Most of the increase compared to 2008 is in the yellowfin sole and pollock targets. The BSAI trawl limited access sector exceeded the 2009 annual halibut mortality limit of 175 mt for the pollock/Atka mackerel/other species category by 250 mt. For 2009, the BSAI trawl limited access sector will remain below the overall 875 mt limit.

The total trawl halibut mortality by target through September 19, 2009, compared to September 20, 2008, is:

2009 Total – 2,409 mt

Pacific cod 225 mt, Pollock 425 mt, Rock sole 528 mt, Yellowfin 779 mt, Other 453 mt

2008 Total – 2,069 mt

Pacific cod 331 mt, Pollock 282 mt, Rock sole 549 mt, Yellowfin 207 mt, Other 399 mt

Other includes Atka mackerel, arrowtooth flounder, flathead sole, other flatfish, and rockfish.

Atka mackerel

Eight CPs (six in 2008) registered for the 2009 A and B season HLA fisheries in 542 and 543: three in the Amendment 80 cooperative, four in the Amendment 80 limited access sector, and one in the BSAI trawl limited access sector.

Pacific cod

Reallocation

On September 16, 2009, NMFS reallocated 4,200 mt from trawl CVs, 1,300 mt from ≥ 60 pot CVs, and 550 mt from the jig sector to 1,200 mt for AFA CPs, 3,000 mt for the Amendment 80 cooperative, 1,350 mt for hook-and-line CPs, and 500 for pot CPs. Late in October NMFS will assess the remaining catch in the hook-and-line and pot CV sectors for another reallocation.

Hook-and-line catcher/processors

The B season fishery opened August 15, 2009. The amount remaining at the beginning of the 2009 B season was 36,801 mt compared to 35,402 mt in 2008. Thirty-five CPs are fishing compared to 37 in 2008. At a rate of 500 mt/day a closure is projected in late October. This projection includes the latest reallocation, but not any possible future reallocations. NMFS may reallocate enough Pacific cod to extend the hook-and-line CP fishery for another week depending on the pot CV catch in October. Halibut mortality is consistent with rates from past years averaging 37 mt/week.

Hook-and-line catcher vessels

The fishery for hook-and-line catcher vessels ≥ 60 feet LOA remains open with no participation. In 2008, the fishery remained open until August 28 with no participation.

Hook-and-line and pot catcher vessels < 60 feet length overall

In 2009, NMFS reallocated 1,200 mt in March and 400 mt in April from jig gear to the < 60 foot category. The fishery reopened April 30. Effort is low and no closure date projected. In 2008, the <60 foot fishery reopened September 12 through December 31. Twelve vessels participated (7 pot, 5 hook-and-line).

Jig

In 2009 there was no effort in the A season and minimal effort in the B season. In 2008, four vessels started fishing Pacific cod in April and May catching 15 mt.

Pot

The catcher processor and catcher vessel B seasons opened September 1, 2009. As of September 19, the CPs have 1,071 mt remaining and the CVs ≥ 60 ft have 5,588 mt remaining. Three CPs are fishing, but no catcher vessels are currently fishing. NMFS expects some CV effort before red king crab opens October 15. In November 2008 both sectors stopped fishing Pacific cod and the fisheries remained open until December 31, 2008.

Trawl

The 2009 C season opened June 10 and remains open catching 1,200 mt. NMFS reallocated 4,200 mt from the trawl CV to the Amendment 80 and AFA CP sectors. The 2008 C season remained open until November 1 catching 1,500 mt.

The Amendment 80 cooperative is managing their catch. The Amendment 80 limited access fishery is closed for 2009 due to reaching their halibut mortality limit. The 2009 A season closed for AFA CPs March 6 and remain closed for the year.

Arrowtooth flounder and Greenland turbot

The directed fisheries opened May 1. Trawl CPs targeted Greenland turbot in the Aleutian Islands subarea and NMFS closed directed fishing May 28, 2009. The initial TAC (ITAC) of 1,947 mt has been exceeded. NMFS released 343 mt from the non-specified reserves. This increased the ITAC to the total TAC of 2,290 mt equal the ABC. In the Bering Sea subarea several hook-and-line CPs targeted turbot during June to August. In 2009, non-pelagic trawl gear catch increased to 24,000 mt of arrowtooth flounder from 7,000 mt in 2007 before Amendment 80 and 2,900 mt of Greenland turbot from 400 mt in 2007.

Amendment 80 species

The 2009 catch of Amendment 80 species increased compared to the 2008 catch for Atka mackerel and decreased for the other Amendment 80 species.

Species	2009	2008
Atka mackerel	45,662	39,626
Flathead sole	17,765	21,348
Pacific ocean perch	12,154	14,324
Rock sole	46,655	48,762
Yellowfin sole	90,092	114,637

Gulf of Alaska

Western GOA Pacific cod

The B season Pacific cod fisheries opened September 1. NMFS closed the Central GOA inshore fishery on TAC October 1. The 1,000 mt of Pacific cod projected to remain on October 1 is not enough to support a trawl fishery. Depending on the amount of Pacific cod remaining NMFS will consider reopening the Central GOA inshore sector after trawl gear reaches the halibut mortality limit. In the Western GOA, the hook-and-line and pot inshore fleet is catching about 300 mt/week with about 4,300 mt remaining. Trawl gear opens October 1 and the Pacific cod catch rates may increase if the trawl vessels target Pacific cod after the pollock fishery closes.

Pollock

The C season fisheries in areas 610, 620, and 630 opened August 25. NMFS closed area 610 August 31. Area 610 opens for the D season October 1 with about 5,210 mt of pollock remaining. NMFS closed areas 620 and 630 September 2. There was no interest in fishing in areas 620 or 630. The remaining amounts are 2,900 mt for area 620 and

4,700 mt for area 630. Areas 620 and 630 will reopen September 29 for the C season and remain open until the D season opens October 1. NMFS will monitor all the pollock fisheries inseason.

Rockfish

Information on the Rockfish Program can be found at <http://alaskafisheries.noaa.gov/sustainablefisheries/goarat/default.htm>. The directed fisheries for the vessels in cooperatives opened May 1, 2009. The limited access fisheries opened July 1.

As in 2008, two catcher/processor cooperatives with five vessels and five shoreside cooperatives with 44 catcher vessels were formed. Seven catcher/processors and two catcher vessels elected to participate in the limited access fisheries. Three (four in 2008) catcher/processors elected to participate in the opt out fishery. Four (five in 2008) catcher vessels registered to participate in the entry level fishery. The catch from vessels not registered to participate in the Rockfish Program fishing in State waters will be deducted from the entry level fishery.

Deep and Shallow Water Complex Trawl Fisheries

The third seasonal allowance of halibut mortality became available July 1, 2009. For the deep-water complex 171 mt of the third season limit of halibut mortality is deducted for the rockfish pilot program cooperatives. Both complexes remained open until the fourth seasonal allowance of halibut mortality for the shallow water fishery became available September 1. The shallow water complex closed September 2 taking 146 mt of halibut mortality in the trawl Pacific cod fishery. The shallow water fishery opens October 1 when the remaining amount of halibut mortality for trawl gear becomes available. As of September 19, 445 mt of halibut mortality remains for deep-water and shallow water complexes. The Rockfish Pilot program has 145 mt remaining.

Year	Deep CV	Deep CP	Shallow CV	Shallow CP	Total
2009	256	315	778	60	1,409
2008	182	212	515	44	952

Hook-and-line gear

Halibut mortality for the hook-and-line fleet is at 234 mt of the 290 mt annual allocation. This leaves 56 mt remaining. At the average rate of 5 mt of halibut mortality a week, the hook-and-line Pacific cod fishery is not projected to close anytime soon. In 2008, the hook-and-line fishery closed October 16 due to reaching the halibut mortality limit.

Bering Sea Aleutian Islands Catch Report
 (includes CDQ)
 Through: 19-SEP-09

National Marine Fisheries Service
 Alaska Region, Sustainable Fisheries
 Catch Accounting



Bering Sea

Sea- sons	Account	Total Catch	Quota	Remaining Quota	% Taken	Last Wk Catch
	Other Rockfish (includes CDQ)	180	485	305	37%	1
	Pacific Ocean Perch (includes CDQ)	683	3,247	2,564	21%	1
	Sablefish (Hook-and-Line and Pot)	566	1,088	522	52%	35
	Sablefish CDQ (Hook-and-Line and Pot)	85	272	187	31%	5
	Sablefish (Trawl)	81	1,156	1,075	7%	0
	Sablefish CDQ (Trawl)	2	102	100	2%	0
	Greenland Turbot	1,883	4,327	2,444	44%	12
	Greenland Turbot CDQ	83	545	462	15%	3
X	Pollock, AFA Inshore	344,029	352,080	8,051	98%	4,173
X	Pollock, AFA Catcher Processor	272,599	281,664	9,065	97%	9,584
X	Pollock, AFA Mothership	70,308	70,416	108	100%	72
X	Pollock CDQ	81,122	81,500	378	100%	696
	Pollock, Incidental Catch, non-Bogoslof (includes CDQ)	21,977	29,340	7,363	75%	448
	Pollock, Incidental Catch, Bogoslof (includes CDQ)	54	50	-4	109%	0

Bering Sea Aleutian Islands Catch Report
(includes CDQ)
Through: 19-SEP-09

National Marine Fisheries Service
Alaska Region, Sustainable Fisheries
Catch Accounting



Aleutian Islands

Sea- sons	Account	Total Catch	Quota	Remaining Quota	% Taken	Last Wk Catch
	Other Rockfish (includes CDQ)	271	472	201	57%	14
	Pacific Ocean Perch, Eastern	3,216	3,751	535	86%	0
	Pacific Ocean Perch, Eastern CDQ	416	449	33	93%	0
	Pacific Ocean Perch, Central	2,816	3,804	988	74%	46
	Pacific Ocean Perch, Central CDQ	152	456	304	33%	0
	Pacific Ocean Perch, Western	4,642	5,822	1,180	80%	304
	Pacific Ocean Perch, Western CDQ	230	698	468	33%	47
	Atka Mackerel, Eastern ICA	45	200	155	23%	0
	Atka Mackerel, Eastern (Jig)	0	120	120	0%	0
	Atka Mackerel, Eastern CDQ	2,743	2,889	146	95%	0
X	Atka Mackerel, Eastern (Trawl)	11,898	23,792	11,894	50%	0
	Atka Mackerel, Central ICA	51	20	-31	256%	1
X	Atka Mackerel, Central (Trawl)	18,094	29,002	10,908	62%	2,340
	Atka Mackerel, Central CDQ	2,783	3,478	695	80%	0
	Atka Mackerel, Western ICA	23	20	-3	115%	2
X	Atka Mackerel, Western (Trawl)	8,648	15,072	6,424	57%	2,275
	Atka Mackerel, Western CDQ	1,377	1,808	432	76%	405
	Sablefish (Hook-and-Line and Pot)	682	1,320	638	52%	25
	Sablefish CDQ (Hook-and-Line and Pot)	156	330	174	47%	9
	Sablefish (Trawl)	47	468	421	10%	0
	Sablefish CDQ (Trawl)	4	41	37	11%	0
	Greenland Turbot (includes CDQ)	2,153	1,947	-206	111%	3
X	Pollock	403	15,500	15,097	3%	0
X	Pollock CDQ	0	1,900	1,900	0%	0
X	Pollock, Incidental Catch (includes CDQ)	1,069	1,600	531	67%	17

Bering Sea Aleutian Islands Catch Report
(includes CDQ)
Through: 19-SEP-09

National Marine Fisheries Service
Alaska Region, Sustainable Fisheries
Catch Accounting



Bering Sea Aleutian Islands

Sea- sons	Account	Total Catch	Quota	Remaining Quota	% Taken	Last Wk Catch
	Alaska Plaice (includes CDQ)	12,539	42,500	29,961	30%	527
	Arrowtooth Flounder	24,849	63,750	38,901	39%	356
	Arrowtooth Flounder CDQ	880	8,025	7,145	11%	24
	Flathead Sole	17,300	53,580	36,280	32%	435
	Flathead Sole CDQ	477	6,420	5,943	7%	1
	Northern Rockfish (includes CDQ)	1,913	7,160	5,247	27%	308
	Other Flatfish (includes CDQ)	2,090	14,790	12,700	14%	18
	Other Species (includes CDQ)	22,661	42,500	19,839	53%	833
X	Pacific Cod, Catcher Processor (AFA)	4,788	4,826	38	99%	32
X	Pacific Cod, Catcher Processor (Amendment 80)	16,839	24,125	7,286	70%	859
X	Pacific Cod, Catcher Vessel (Trawl)	29,583	30,641	1,058	97%	26
X	Pacific Cod, Catcher Processor (Hook-and-Line)	57,316	77,725	20,409	74%	3,511
X	Pacific Cod, Catcher Vessel (Hook-and-Line >= 60 ft)	0	314	314	0%	0
X	Pacific Cod, Catcher Processor (Pot)	1,781	2,852	1,071	62%	154
	Pacific Cod, Catcher Vessel (Pot >= 60 ft)	6,285	11,873	5,588	53%	0
	Pacific Cod (Jig)	13	57	44	22%	0
	Pacific Cod (Hook-and-Line and Pot < 60 ft)	4,252	4,737	485	90%	0
	Pacific Cod, Incidental Catch (Hook-and-Line and Pot)	55	500	445	11%	0
X	Pacific Cod CDQ	14,894	18,890	3,996	79%	26
	Rock Sole	45,778	80,370	34,592	57%	420
	Rock Sole CDQ	879	9,630	8,751	9%	1
	Rougheye Rockfish (includes CDQ)	141	539	398	26%	5
	Shortraker Rockfish (includes CDQ)	175	387	212	45%	10
	Squid (includes CDQ)	337	1,675	1,338	20%	5
	Yellowfin Sole	89,683	187,530	97,847	48%	2,490
	Yellowfin Sole CDQ	426	22,470	22,044	2%	0
Total:		1,211,508	1,659,097	447,589	73%	30,560

Other flatfish: all flatfish species, except for Pacific halibut, flathead sole, Greenland turbot, rock sole, yellowfin sole, arrowtooth flounder, and Alaska plaice.

Other rockfish: all Sebastes and Sebastolobus species except for Pacific ocean perch, northern, shortraker, and rougheye rockfish.

Other species: sculpins, sharks, skates, and octopus.

For changes to the harvest specifications refer to <http://alaskafisheries.noaa.gov/2009/hschanges.htm>

**Bering Sea Aleutian Islands Prohibited Species Report
(includes CDQ fisheries)**

Through: 19-SEP-09

**National Marine Fisheries Service
Alaska Region, Sustainable Fisheries
Catch Accounting**



Chinook Salmon

Trawl Gear

Sea- sons	Account	Units	Total Catch	Limit	Remaining	% Taken	Last Wk Catch
	BS Pollock (Pelagic)	Count	11,550	26,825	15,275	43%	261
	BS Chinook Salmon PSQ	Count	440	2,175	1,735	20%	32
	AI Pollock (Pelagic)	Count	5	647	642	1%	0
	AI Chinook Salmon PSQ	Count	0	53	53	0%	0
Total:			11,995	29,700	17,705	40%	293

Halibut Mortality

Non-Trawl Gear

Sea- sons	Account	Units	Total Catch	Limit	Remaining	% Taken	Last Wk Catch
	Halibut Mortality (Non-Trawl)	MT	382	832	450	46%	34
Total:			382	832	450	46%	34

Trawl Gear

Sea- sons	Account	Units	Total Catch	Limit	Remaining	% Taken	Last Wk Catch
	Halibut Mortality (Trawl)	MT	2,411	3,400	989	71%	36
Total:			2,411	3,400	989	71%	36

Trawl and Hook-and-Line Gear

Sea- sons	Account	Units	Total Catch	Limit	Remaining	% Taken	Last Wk Catch
	Halibut Mortality PSQ	MT	126	343	217	37%	0
Total:			126	343	217	37%	0

Herring (includes CDQ fisheries)

Trawl Gear

Sea- sons	Account	Units	Total Catch	Limit	Remaining	% Taken	Last Wk Catch
	Pacific Cod	MT	0	25	25	0%	0
	Rockfish	MT	0	9	9	0%	0
	Rock Sole, Flathead Sole, Other Flatfish	MT	1	25	24	2%	0
	Pollock, Atka Mackerel, Other Species	MT	0	184	184	0%	0
	Pollock Pelagic	MT	40	1,296	1,256	3%	2
	Yellowfin Sole	MT	23	146	123	16%	0
	Greenland Turbot, Arrowtooth, Sablefish	MT	0	12	12	0%	0
Total:			63	1,697	1,634	4%	2

**Bering Sea Aleutian Islands Prohibited Species Report
(includes CDQ fisheries)**

Through: 19-SEP-09

**National Marine Fisheries Service
Alaska Region, Sustainable Fisheries
Catch Accounting**



Opilio (Tanner) Crab - COBLZ

Trawl Gear

Seasons	Account	Units	Total Catch	Limit	Remaining	% Taken	Last Wk Catch
	Opilio Crab	Count	366,897	3,884,550	3,517,653	9%	2,034
	Opilio Crab PSQ	Count	56,334	465,450	409,116	12%	0
Total:			423,231	4,350,000	3,926,769	10%	2,034

Bairdi Crab, Zone 1

Trawl Gear

Seasons	Account	Units	Total Catch	Limit	Remaining	% Taken	Last Wk Catch
	Bairdi Crab	Count	118,559	875,140	756,581	14%	679
	Bairdi Crab PSQ	Count	6,483	104,860	98,377	6%	0
Total:			125,042	980,000	854,958	13%	679

Bairdi Crab, Zone 2

Trawl Gear

Seasons	Account	Units	Total Catch	Limit	Remaining	% Taken	Last Wk Catch
	Bairdi Crab	Count	259,763	2,652,210	2,392,447	10%	1,153
	Bairdi Crab PSQ	Count	5,700	317,790	312,090	2%	0
Total:			265,463	2,970,000	2,704,537	9%	1,153

Red King Crab, Zone 1

Trawl Gear

Seasons	Account	Units	Total Catch	Limit	Remaining	% Taken	Last Wk Catch
	Red King Crab	Count	62,742	175,921	113,179	36%	1,793
	Red King Crab PSQ	Count	2,124	21,079	18,955	10%	0
Total:			64,866	197,000	132,134	33%	1,793

"Other flatfish" for PSC monitoring: all flatfish species, except for Pacific halibut (a prohibited species), flathead sole, Greenland turbot, rock sole, yellowfin sole, arrowtooth flounder.

COBLZ: C. Opilio Crab Bycatch Limitation Zone. 50 CFR 679.21(e) and Figure 13.

Zone 1: Federal Reporting Areas 508, 509, 512, 516.

Zone 2: Federal Reporting Areas 513, 517, 521.

Data is based on observer reports extrapolated to total groundfish harvest. Estimates for all weeks may change due to incorporation of late or corrected data.

**Bering Sea Aleutian Islands Seasonal Prohibited
Species Report (includes CDQ fisheries)**

Through: 19-SEP-09
Account: ALL

**National Marine Fisheries Service
Alaska Region, Sustainable Fisheries
Catch Accounting**



Non-Chinook Salmon, CVOA

Trawl Gear

Season	Begin	End	Units	Total Catch	Limit	Remaining	% Taken
Non-Chinook Salmon PSQ CVOA	15-AUG-09	14-OCT-09	Count	0	4,494	4,494	0%
Non-Chinook Salmon CVOA	15-AUG-09	14-OCT-09	Count	11,556	37,506	25,950	31%
Total:				11,556	42,000	30,444	28%

CVOA: Catcher Vessel Operational Area. 50 CFR 679.22(a)(5) and Figure 2.

Data is based on observer reports extrapolated to total groundfish harvest. Estimates for all weeks may change due to incorporation of late or corrected data.

Gulf of Alaska Catch Report

Through: 19-SEP-09

National Marine Fisheries Service
Alaska Region, Sustainable Fisheries
Catch Accounting



Western, Central Pollock

Sea- sons	Account	Total Catch	Quota	Remaining Quota	% Taken	Last Wk Catch
X	Pollock, 610 Shumagin	10,036	15,249	5,213	66%	0
X	Pollock, 620 Chirikof	11,196	14,098	2,902	79%	8
X	Pollock, 630 Kodiak	6,362	11,058	4,696	58%	73

Western Gulf

Sea- sons	Account	Total Catch	Quota	Remaining Quota	% Taken	Last Wk Catch
	Arrowtooth Flounder	1,422	8,000	6,578	18%	7
	Deep Water Flatfish	8	706	698	1%	0
	Shallow Water Flatfish	95	4,500	4,405	2%	0
	Flathead Sole	246	2,000	1,754	12%	0
	Rex Sole	342	1,007	665	34%	0
	Pacific Ocean Perch	3,800	3,713	-87	102%	0
	Rougheye Rockfish	79	125	46	63%	0
	Shorthead Rockfish	150	120	-30	125%	0
	Thornyhead Rockfish	224	267	43	84%	1
	Pelagic Shelf Rockfish	711	819	108	87%	0
	Northern Rockfish	1,945	2,054	109	95%	0
	Other Rockfish	392	357	-35	110%	1
X	Pacific Cod, Inshore	10,204	14,558	4,354	70%	341
X	Pacific Cod, Offshore	871	1,617	746	54%	0
	Sablefish (Hook-and-Line)	1,192	1,312	120	91%	33
	Sablefish (Trawl)	93	324	231	29%	0
	Big Skate	84	632	548	13%	9
	Longnose Skate	56	78	22	71%	5

Note: All weights are in metric tons.

Gulf of Alaska Catch Report

Through: 19-SEP-09

**National Marine Fisheries Service
Alaska Region, Sustainable Fisheries
Catch Accounting**



Central Gulf

Sea- sons	Account	Total Catch	Quota	Remaining Quota	% Taken	Last Wk Catch
	Arrowtooth Flounder	19,872	30,000	10,128	66%	566
	Deep Water Flatfish	347	6,927	6,580	5%	24
	Shallow Water Flatfish	5,623	13,000	7,377	43%	12
	Flathead Sole	2,465	5,000	2,535	49%	38
	Rex Sole	3,838	6,630	2,792	58%	63
	Pacific Ocean Perch	7,499	8,246	747	91%	423
	Rougheye Rockfish	90	833	743	11%	6
	Shortraker Rockfish	182	315	133	58%	1
	Pelagic Shelf Rockfish	2,050	3,404	1,354	60%	20
	Northern Rockfish	1,882	2,308	426	82%	30
	Thornyhead Rockfish	260	860	600	30%	8
	Other Rockfish	372	569	197	65%	5
	Pacific Cod, Rockfish Program	377	491	114	77%	6
X	Pacific Cod, Inshore	18,773	20,786	2,013	90%	544
X	Pacific Cod, Offshore	1,429	2,364	935	60%	0
	Sablefish (Hook-and-Line)	4,030	3,992	-38	101%	56
	Sablefish (Trawl)	626	998	372	63%	41
	Big Skate	1,373	2,065	692	66%	24
	Longnose Skate	810	2,041	1,231	40%	29

Eastern Gulf

Sea- sons	Account	Total Catch	Quota	Remaining Quota	% Taken	Last Wk Catch
	Rougheye Rockfish	94	326	232	29%	1
	Shortraker Rockfish	194	463	269	42%	4
	Thornyhead Rockfish	135	783	648	17%	1
	Pacific Cod, Inshore	756	1,792	1,036	42%	0
	Pacific Cod, Offshore	4	199	195	2%	0
	Big Skate	106	633	527	17%	12
	Longnose Skate	167	768	601	22%	7

Gulf of Alaska Catch Report

Through: 19-SEP-09

National Marine Fisheries Service
Alaska Region, Sustainable Fisheries
Catch Accounting



West Yakutat

Sea- sons	Account	Total Catch	Quota	Remaining Quota	% Taken	Last Wk Catch
	Arrowtooth Flounder	46	2,500	2,454	2%	1
	Deep Water Flatfish	3	997	994	0%	0
	Shallow Water Flatfish	1	3,333	3,332	0%	0
	Flathead Sole	0	3,531	3,531	0%	0
	Rex Sole	1	513	512	0%	0
	Pacific Ocean Perch	1,143	1,108	-35	103%	0
	Pelagic Shelf Rockfish	157	234	77	67%	0
	Other Rockfish	64	604	540	11%	1
	Pollock	1,220	1,215	-5	100%	0
	Sablefish (Hook-and-Line)	1,581	1,557	-24	102%	3
	Sablefish (Trawl)	127	227	100	56%	0

Southeast

Sea- sons	Account	Total Catch	Quota	Remaining Quota	% Taken	Last Wk Catch
	Arrowtooth Flounder	57	2,500	2,443	2%	8
	Deep Water Flatfish	2	538	536	0%	0
	Shallow Water Flatfish	0	1,423	1,423	0%	0
	Flathead Sole	0	650	650	0%	0
	Rex Sole	0	846	846	0%	0
	Pacific Ocean Perch	1	2,044	2,043	0%	0
	Pelagic Shelf Rockfish	1	324	323	0%	0
	Other Rockfish	10	200	190	5%	0
	Pollock	0	8,280	8,280	0%	0
	Demersal Shelf Rockfish	126	362	236	35%	2
	Sablefish (Hook-and-Line)	2,587	2,746	159	94%	100

Entire Gulf

Sea- sons	Account	Total Catch	Quota	Remaining Quota	% Taken	Last Wk Catch
	Atka Mackerel	2,204	2,000	-204	110%	0
	Other Skates	803	2,104	1,301	38%	17
	Other Species	1,884	4,500	2,616	42%	85
Total:		134,880	242,723	107,843	56%	2,615

Deep water flatfish: Dover sole, Greenland turbot, and deepsea sole.

Shallow water flatfish: flatfish not including deep water flatfish, flathead sole, rex sole, or arrowtooth flounder.

Gulf of Alaska Prohibited Species Report

Through: 19-SEP-09

**National Marine Fisheries Service
Alaska Region, Sustainable Fisheries
Catch Accounting**



Non-Chinook Salmon

Trawl Gear

Sea- sons	Account	Units	Total Catch	Limit	Remaining	% Taken	Last Wk Catch
	Non Chinook Salmon	Count	2,192	0			0
Total:			2,192	0			0

Chinook Salmon

Trawl Gear

Sea- sons	Account	Units	Total Catch	Limit	Remaining	% Taken	Last Wk Catch
	Chinook Salmon	Count	4,918	0			0
Total:			4,918	0			0

Halibut Mortality

Non-Trawl Gear

Sea- sons	Account	Units	Total Catch	Limit	Remaining	% Taken	Last Wk Catch
X	Other Hook-and-Line Fisheries	MT	233	290	57	80%	10
Total:			233	290	57	80%	10

Trawl Gear

Sea- sons	Account	Units	Total Catch	Limit	Remaining	% Taken	Last Wk Catch
	Trawl Fishery	MT	1,396	2,000	604	70%	8
Total:			1,396	2,000	604	70%	8

No PSC Limits apply to salmon in the GOA.

Other hook-and-line fisheries means all hook-and-line fisheries except sablefish and demersal shelf rockfish in the Southeast District. The hook-and-line sablefish fishery is exempt from halibut PSC limits.

Halibut mortality for the demersal shelf rockfish fishery. Southeast District is not listed due to insufficient observer coverage.

Data is based on observer reports extrapolated to total groundfish harvest. Estimates for all weeks may change due to incorporation of late or corrected data.

Trawl halibut PSC limit data include catch from Rockfish Pilot Program cooperatives.

Gulf of Alaska Halibut Mortality Report

Through: 19-SEP-09

National Marine Fisheries Service
Alaska Region, Sustainable Fisheries
Catch Accounting



Trawl Fisheries

Deep Water Species Complex

Season	Begin	End	Total Catch	Limit	Limit Remaining	% Taken
1st Season	20-JAN-09	01-APR-09	185	100	-85	185%
2nd Season	01-APR-09	01-JUL-09	240	300	60	80%
3rd Season	01-JUL-09	01-SEP-09	92	400	308	23%
4th Season	01-SEP-09	01-OCT-09	19	0	-19	0%
Total:			536	800	264	67%

Shallow Water Species Complex

Season	Begin	End	Total Catch	Limit	Limit Remaining	% Taken
1st Season	20-JAN-09	01-APR-09	193	450	257	43%
2nd Season	01-APR-09	01-JUL-09	350	100	-250	350%
3rd Season	01-JUL-09	01-SEP-09	143	200	57	71%
4th Season	01-SEP-09	01-OCT-09	145	150	5	97%
Total:			831	900	69	92%

Year-To-Date

Account	Total Catch	Limit	Limit Remaining	% Taken	Last Wk Catch
Trawl Fishery	1,396	2,000	604	70%	8

Other Hook-and-Line Fisheries

Season	Begin	End	Total Catch	Limit	Limit Remaining	% Taken
1st Season	01-JAN-09	10-JUN-09	199	250	51	80%
2nd Season	10-JUN-09	01-SEP-09	1	5	4	12%
3rd Season	01-SEP-09	31-DEC-09	33	35	2	94%
			233	290	57	80%

Deep-water species complex: sablefish, rockfish, deep-water flatfish, rex sole and arrowtooth flounder. Shallow-water species complex: pollock, Pacific cod, shallow-water flatfish, flathead sole, Atka mackerel, and 'other species'.

No apportionment between shallow-water and deep-water fishery complexes during October 1 to December 31 (300 mt allocated).

Other hook-and-line fisheries means all hook-and-line fisheries except sablefish and demersal shelf rockfish in the Southeast District.

Halibut mortality for the demersal shelf rockfish fishery. Southeast District is not listed due to insufficient observer coverage.

Note: All weights are in metric tons.

**Central Gulf of Alaska
Rockfish Pilot Program**

Through: 19-SEP-09

**National Marine Fisheries Service
Alaska Region, Sustainable Fisheries
Catch Accounting**



Account	Total Catch	Quota	Remaining Quota	Percent Taken
GOA Pacific Cod, Central	380	491	111	77%
GOA Sablefish, Central	415	421	6	99%
GOA Pacific Ocean Perch, Central	7,280	8,448	1,168	86%
GOA Thornyhead Rockfish, Central	39	192	153	20%
GOA Northern Rockfish, Central	1,849	2,312	463	80%
GOA Pelagic Shelf Rockfish, Central	2,034	3,474	1,440	59%
Total:	11,997	15,338	3,341	78%

This report represents the total Cooperative, Entry Level and Limited Access catch to date of each species.

Shorthead and Rougheye Rockfish catch data are confidential and therefore not listed.

"Pelagic Shelf Rockfish" is *Sebastes variabilis* (dusky), *S. entomelas* (widow) and *S. flavidus* (yellowtail).

**Central Gulf of Alaska
Rockfish Pilot Program
Prohibited Species Report**

Through: 19-SEP-09

**National Marine Fisheries Service
Alaska Region, Sustainable Fisheries
Catch Accounting**



Account	Total Catch	Quota	Remaining Quota	Percent Taken
Halibut - Coop	25	170	145	15%
Halibut - Deep Water Complex Trawl Fishery - Sideboard	58	102	44	57%
Halibut - Shallow Water Complex Trawl Fishery - Sideboard	22	137	115	16%
Total:	104	409	304	26%

This report represents the total halibut bycatch to date by the GOA Rockfish Pilot Program cooperatives and GOA July sideboard limits.



UNITED STATES DEPARTMENT OF COMMERCE
National Oceanic and Atmospheric Administration

National Marine Fisheries Service

P.O. Box 21668

Juneau, Alaska 99802-1668

September 30, 2009

Mr. Eric Olson, Chairman
North Pacific Fishery Management Council
605 West 4th Avenue, Suite 306
Anchorage, Alaska 99501-2252

Dear Chairman Olson:

On August 17, 2009, the Secretary of Commerce approved the Fishery Management Plan for Fish Resources of the Arctic Management Area (Arctic FMP). Two corrections have been identified for the Arctic FMP and one correction for the associated Amendment 29 to the FMP for Bering Sea/Aleutian Islands King and Tanner Crabs (Crab FMP). The first correction to the Arctic FMP is based on a comment received during the public comment period that identified an error in the FMP text. In Section 4.2.2 of the Arctic FMP, the oceanographic features of the Arctic Ocean should be corrected to describe upwellings from Barrow Canyon, rather than Beaufort Canyon, as currently stated in the Arctic FMP. In response to this comment, we indicated that this error could be corrected by an FMP amendment.

The second correction to the Arctic FMP was identified during the rulemaking process. For the FMP definitions listed in Section 3.2, the introductory sentence states that the following definitions apply to "all fisheries of the U.S. EEZ off Alaska." The definitions in this section apply to the fisheries of the U.S. EEZ of the Arctic Ocean. Different definitions are used for other fisheries managed in the U.S. EEZ off Alaska, and the Arctic FMP definitions were intended to apply only to Arctic fisheries. The text should be corrected to limit the application of the Arctic FMP definitions to the Arctic Ocean.

The correction to the Crab FMP revises the map for the management area. The current figure in Amendment 29 contains two lines at the northern boundary near Bering Strait; only the northern most line should be shown. The correct management area figure is enclosed.

Under the Magnuson-Stevens Fishery Conservation and Management Act, the FMP amendment process is required to correct these errors, including public notice of North Pacific Fishery Management Council consideration and action to correct technical errors in the FMPs. Pending Council approval of these corrections, we would coordinate with you and Mr. Oliver to submit them to the Secretary of Commerce in a manner similar to other FMP amendments. NMFS staff and NOAA General Counsel will be available at the October meeting to respond to questions you may have concerning this process.

Sincerely,

A handwritten signature in black ink that reads "Robert D. Mecum".

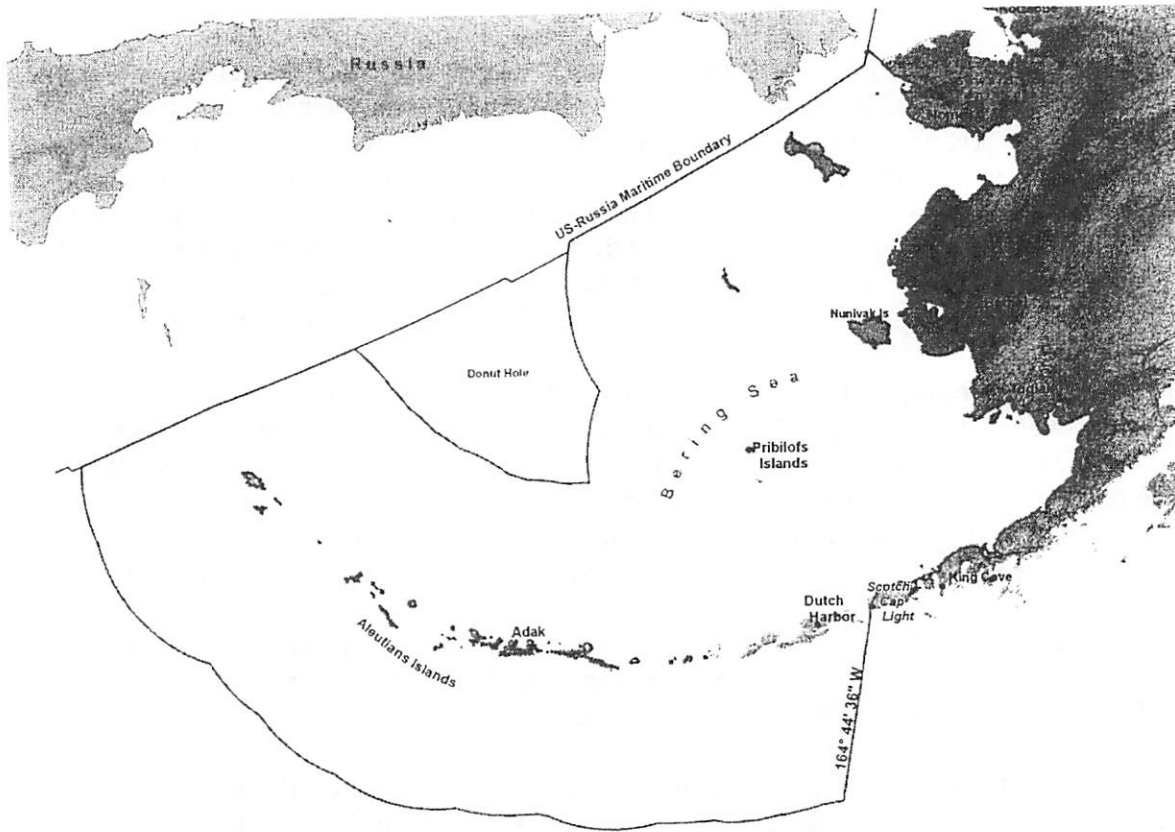
Robert D. Mecum
Acting Administrator, Alaska Region



Enclosure

Enclosure

Bering Sea/Aleutian Islands Crab Management Area



Status of FMP Amendments
September 30, 2009

FMP Amendment Status: <u>Actions Since June 2009</u>	Date of Council Action	Start Regional Review	Transmittal Date of Action to NMFS HQ for Review	Proposed FMP Amendment Notice of Availability Published	Proposed Rule Published in Federal Register	Final Rule or Notice of Approval Published in Federal Register
Amendment 28 (KTC) – Post delivery transfers Approved: Feb. 23, 2009	December 2007	PR: 8/14/08 FR: 5/29/09	PR: November 18, 2008 FR: July 24, 2009	November 25, 2008 73 FR 71598 Comment period ended January 24, 2009	December 12, 2008 73 FR 75661 Comment period ended January 26, 2009	August 14, 2009 74 FR 41092 Effective September 14, 2009
Amendment 30 (KTC) – Arbitration System Changes	April 2008	PR: 1/28/09				
Amendment 31 (KTC) – C-Share Active Participation	April 2008					
Amendments 33 (KTC) – Revisions to Loan Program (no regulations needed) Approved: August 24, 2009	June 2008	NOA: 3/27/09	NOA: May 22, 2009 NAD: August 20, 2009	June 1, 2009 74 FR Comment period ended July 31, 2009		September 1, 2009 74 FR 45131 Effective August 24, 2009
Amendment 34 (KTC) – Adjustments to GOA sideboards for BSAI crab vessels	Oct 2008					
Amendments 62/62: Single Geographic Location and AFA Housekeeping Approved: July 1, 2009	Oct 2002	PR: 12/5/08 FR: 5/27/09	PR: March 27, 2009 FR: June 26, 2009	April 2, 2009 74 FR 14950 Comment period ended June 1, 2009	April 14, 2009 74 FR 17137 Comment period ended May 29, 2009	July 17, 2009 74 FR 34701 Effective September 14, 2009
Amendment 85 (GOA) – BSAI Sideboard exemption in GOA Rockfish Program Approved June 18, 2009	Oct 2008	PR: 1/30/09 FR: 9/15/09	PR: March 16, 2009	March 24, 2009 74 FR 12300 Comment period ended May 26, 2009	April 6, '09; May13'09 74 FR 15420; 22507 Comment period ended 5/21/09;6/22/09	

Status of FMP Amendments
September 30, 2009

FMP Amendment Status: <u>Actions Since June 2009</u>	Date of Council Action	Start Regional Review	Transmittal Date of Action to NMFS HQ for Review	Proposed FMP Amendment Notice of Availability Published	Proposed Rule Published in Federal Register	Final Rule or Notice of Approval Published in Federal Register
Amendment 90 (BSAI) Post delivery transfers for Amendment 80 cooperatives and Amendment 78 (GOA) Rockfish Post-Delivery Transfers Approved: March 16, 2009	February 2008	PR: 9/2/08 FR:5/29/09	PR: December 8, 2008 FR: July 30, 2009	December 17, 2008 73 FR 76605 Comment period ended February 17, 2009	January 5, 2009 74 FR 254 Comment period ended February 17, 2009	August 21, 2009 74 FR 42178 Effective September 21, 2009
Amendments 92/82 to BSAI and GOA FMPS - Trawl License Latency Approved: March 11, 2009	April 2008	PR: 8/25/08 FR: 5/28/09	PR: December 5, 2008 FR: July 29, 2009	December 12, 2008 73 FR 75659 Comment period ended February 10, 2009	December 30, 2008 73 FR 79773 Comment period ended February 13, 2009	August 14, 2009 74 FR 41080 Effective September 14, 2009
Arctic FMP and Amd 29 (KTC FMP) Approved August 17, 2009	February 2009	NOA and PR: 4/9/09 FR: 9/22/09	NOA and PR: 5/19/09	May 26, 2009 74 FR 24757 Comment period ended July 27, 2009	June 10, 2009 74 FR 27498 Comment period ended July 27, 2009	
Amendment 86 (GOA) – fixed gear endorsement for Pacific cod	April 2009					
Amendment 91 (BSAI) Chinook Salmon bycatch management or the BS pollock fishery	April 2009					

Status of Regulatory Amendments
September 30, 2009

Regulatory Amendment Status: <u>Actions Since June 2009</u>	Date of Council Action	Start Regional Review of Rule	Transmittal Date of Rule to NMFS Headquarters	Proposed Rule in <i>Federal Register</i>	Final Rule Published in <i>Federal Register</i>
Groundfish/Crab Regulatory Amendments					
Revise MRA accounting period for non-AFA C/Ps for selected groundfish species in the BSAI * Intend to withdraw proposed rule	December 2006	PR: 7/2/08 W/Draw PR 9/1/09	PR: Jan. 28, 2009	February 13, 2009 74 FR 7209 Comment period ended March 16, 2009	
CDQ regulation of harvest	MSA requirement Council - June 2007	PR: 12/17/08			
Observer Program regulation revisions	April 2008	PR: 2/25/09	PR: September 8, 2009	September 30, 2009 74 FR 50155 Comment period ends October 30, 2009	
Allow online transfers for CDQ, crab IPQ, and cooperatives	NMFS	PR: 1/6/09 FR: 7/22/09	PR: May 4, 2009 FR: 9/21/09	May 26, 2009 74 FR 24762 Comment period ended June 10, 2009	
Crab EDR revision	NMFS	PR: 5/14/09			

Status of Regulatory Amendments
September 30, 2009

Regulatory Amendment Status: <u>Actions Since June 2009</u>	Date of Council Action	Start Regional Review of Rule	Transmittal Date of Rule to NMFS Headquarters	Proposed Rule in <i>Federal Register</i>	Final Rule Published in <i>Federal Register</i>
Halibut Regulations					
Charter vessel moratorium	April 2007	PR: 9/29/08 FR: 9/4/09	PR: Feb. 25, 2009	April 21, 2009 74 FR 18178 Comment period ended June 5, 2009	
Halibut charter catch sharing plan	Oct 2008				
Subsistence Halibut – Include Certain Rural Residents	June 2008	PR:6/22/09 FR: 9/15/09	PR: July 21, 2009	August 6, 2009 74 FR 39269 Comment period ended Sept. 8, 2009	
Remove inactive IFQ permits	June 2006	PR: 8/12/09			

Regulatory Actions Completed in 2009
September 30, 2009

- Notice of EFP application – Halibut survival rates: January 22, 2009; 74 FR 3992
- 2009 Chiniak Gully closure –rescinding closure: January 21, 2009; 74 FR 3449
- BSAI pollock and GOA pollock and Pacific cod 2009 TAC adjustments: BSAI: 1/2/09, 74 FR 38 GOA: 1/5/09, 74 FR 233
- Interagency Electronic Reporting System: December 15, 2008; 73 FR 76136
- Amendment 73/77 Removing Dark Rockfish from the BSAI and GOA FMPs: December 31, 2008; 73 FR 80307
- VMS dinglebar gear exemption: January 21, 2009; 74 FR 3446
- BSAI Groudfish 2009/10 Harvest Specifications: February 17, 2009;74 FR 7359
- GOA Groundfish 2009/10 Harvest Specifications: February 17, 2009; 74 FR 7333
- Annual IPHC Regulations: March 19, 2009; 74 FR 11681
- Revisions to MRAs in GOA arrowtooth fishery: March 27, 2009; 74 FR 13348
- Revision to Area 4E seabird avoidance measures: March 27, 2009; 74 FR 13355
- GOA pollock trip limit revisions: April 21, 2009; 74 FR 18156
- Amendment 27 (KTC) Custom processing: May 28, 2009; 74 FR 25449
- Implement 1-Fish Bag Limit in Area 2C: May 6, 2009; 74 FR 21194

BSAI Crab Rationalization (CR) Annual Report Overview for Fishing Year 2008/09

General Program Information and Changes

The fourth CR-fishing year, July 1, 2008–June 30, 2009, was relatively stable, with few Program changes to harvesters, processors, and reporting. The year brought improvements in observer safety protocol, electronic reporting, increased use of cooperatives, and additional initial issuee attrition with little overall change in QS/PQS holders. No significant events occurred within the fishery. Major Regulatory Changes:

73 FR 35084, June 20, 2008 (Effective July 21, 2008)

- permanently exempted CVC QS/IFQ holders from delivery, regional, and arbitration requirements;
- required RCRs to submit an annual Ex-vessel Volume and Value Report, replacing the use of prices reported at time of landing as the basis for cost recovery fee liability estimates.

73 FR 76136, December 15, 2008 (Effective January 14, 2009)

- changed conditions for at-sea transfers of observers, who now must be transferred during daylight hours under safe conditions with the agreement of the observer.

CDQ Fisheries

A share of most BSAI king and Tanner crab fisheries is allocated to the CDQ Program. For BBR and BSS fisheries, numbers of CDQ vessels were slightly higher than those in 2007/08. Landings data remain confidential.

ADAK Fishery

The Adak Community Allocation is 10 percent of the WAG fishery total allowable catch (TAC).

- The 2008/09 allocation was 283,500 pounds, slightly higher than last year's 270,000 pound TAC. Due to the small size of the fishery, harvest information remains confidential.

QS/PQS Fisheries

Appeals

- The Office of Administrative Affairs (OAA) completed 8 appeals during 2008/09.
- Three appeal cases are pending (and one new case was accepted, for the 2009/10 fishing year).

Arbitration

- QS/PQS and IFQ/IPQ holders must participate in the arbitration process. Arbitrations have largely regarded crab costs and delivery terms, except in 2007/08 when a procedural arbitration clarified issues surrounding the timing of price dispute resolutions.

In 2008/09:

- one proceeding partially resolved a delivery/price issue in the BBR fishery in favor of the harvester.
- one issue regarding a two-tier processor price structure was not resolved.

IFQ/IPQ Permits: Issuance and Use

Numbers of persons issued IFQ/IPQ permits and those permit holders with IFQ landings stabilized from earlier years. Initial issuees continued to exit the fisheries but the total number of quota holders remained close to that for initial issuance. Cooperatives each count as one "person".

- Persons issued IFQ/IPQ: IFQ Crew = 32, IFQ Owner = 20, IPQ Processor = 21.
- Permitholders who used permits: IFQ Crew = 81% (26), IFQ Owner = 100% (20), IPQ = 81% (17)
- Eight individual IFQ permit holders (of 54, 14.8 percent) participated in 15 landings.
- Hired Masters landed 99.9% of all IFQ crab landed.
 - of 154 Hired Masters authorized to fish, 112 (72.7%) fished.
 - Hired Masters participated in 786 of 787 (99.9%) total IFQ landings.

Registered Crab Receivers (RCR)

RCR permits are needed to receive CR crab. More permits than actual participants are typically issued as a result of businesses using multiple facilities/platforms to receive crab. In 2008/09 the percentage of issued RCR permits actually to receive landings used increased.

- 62 Registered Crab Receiver (RCR) permits were issued to 25 persons, compared with last year's issuance of 70 permits to 25 persons.
- 23 (92%) persons used 33 (53%) of the issued RCR permits.

Federal Crab Vessel Permits (FCVP)

Issuance and landing patterns for each vessel permit type has remained fairly consistent over time.

- 88 of 127 (69%) FCVPs issued for harvesting vessels had landings, of which:
 - 85 of 120 CV-endorsed permits had landings (71%), and
 - 5 of 7 CP-endorsed permits had landings (71%).

Transfers

Numbers of intercooperative leases were little changed; numbers of noncooperative leases declined to zero because harvesting IFQ has been essentially fully assigned to cooperatives. Numbers of permanent harvesting QS transfers continued to decrease:

- 510 QS/IFQ transfers included 301 for cooperative leases and 209 for QS transfers.
- A total of 102.5 million QS units transferred; IFQ transferred totaled about 16.5 million pounds.
- 87 PQS/IPQ transfers included 42 PQS and 45 IPQ leases, almost twice as many transfers as in 2007/08, and occurred among more transferors and transferees.

Average Price per Crab QS Unit for QS Transfers

Estimated weighted average price per crab QS unit for priced QS transfer data are based on reported total transaction prices (including fees), multiplied by the number of units—not on reported dollars per unit.

<u>2008/09 Season</u>	<u>2007/08 Season</u>
BBR: \$0.80–\$1.16	BBR: \$0.65–\$1.17
BSS: \$0.42–\$0.53	BSS: \$0.42–\$0.53
Tanner: \$0.7–\$0.14	Tanner: \$0.04–\$0.26

Consolidation—Quota holders

Entrance and Attrition

- Initial issues holding QS/PQS at year-end totaled 431, vs. 510 initially and 487 after the first CR year.
- The number of initial issues holding no QS/PQS at year-end was 79.
- The number of all persons holding QS/PQS (initial issues and new entrants) totaled 505, for a net change from initial issuance of only 5.

Consolidation—Vessels

- Fleet consolidation stabilized with the addition of one more vessel fishing, for a total of 88.
- For a four-year comparison, in the first year of the Program, 101 vessels fished; in the second year, 91 fished; in the third, 87; and in 2008/09, 88.

Use of Season Lengths

Season lengths for the CR fisheries have remained consistent under the Program. Percentage of season use ranged from 39% (EAG) to 99% (BBR) of the available number of days. (Some landings occurred after the season).

Landings

Fishery	TAC (millions of lbs)	Percent of TAC Used	Vessels with Landings	Number of Landings
BSS	52.6	100	77	428
BBR	18.6	100	77	253
EAG	2.8	100	3	29
WAG	2.5	88	3	37
EBT	2.4	62	21	60
WBT	1.3	8	27	51

Landings for QS Cooperatives

In 2008/09, 80 million pounds of crab IFQ (99.8 percent of all TACs) was assigned to cooperatives.

- 19 cooperatives (429 members) accounted for at least 99.6% of each fishery's IFQ pounds
- 77.6 million pounds, or 96.8%, were landed.

Landings outside Cooperatives

- Only twelve persons held 160,539 pounds of IFQ outside cooperatives;
- Their harvest of approximately 136,000 pounds in 15 landings was 85% of the noncoop harvest potential.

QS/PQS Fishery Top Ports (and Landings)

- Of the seven ports used for CR IFQ fisheries, Dutch Harbor/Unalaska again ranked number one in landings (337 landings).
- St Paul ranked second (185)
- Landings on catcher processors and stationary floating processors, or "At Sea," rose from fifth to third (110), displacing Akutan to fifth-ranked (71) port.
- The other landing ports did not change from last year's standings: King Cove ranked fourth (71); Kodiak sixth (20) and Adak (4) seventh.

Deadloss

Over all, deadloss has decreased under the Program, and, as expected, most (over 87 percent) occurs within the IFQ A permit class.

- The highest percent deadloss by fishery was in WAG, with 3.3 percent.
- By fishery and sector, the WBT fishery catcher-vessel-owner sector had the highest deadloss rate (nearly 2.4 percent), despite the extremely small effort in that fishery (due to low catch rates).

QS/PQS Fishery Sideboards

- As a result of their BSS-earning history, the number of sideboarded fishing vessels totaled 227;
- the number of LLP groundfish licenses to which sideboards apply was originally 57, but one license revocation reduced this number to 56.

Community Protection Program

- The Program includes several measures to protect revenues and employment in fishery-dependent coastal communities with a history of participation in these fisheries. These measures take the form of geographic landing requirements and/or transfer restrictions on IFQ, PQS, and IPQ in five of the nine Program fisheries. There were no changes to these CR features during 2008/09.

Safety and Compliance

The USCG:

- sailed 3,912 cutter hours (163 underway cutter days).
- deployed aircraft 143 days, flying 308 aircraft hours.
- conducted 34 at-sea boardings, 69 dockside compliance checks, found no significant violations.
- conducted one Search and Rescue (SAR) case and reported one fatality in the fishing fleet. A crewmember, entangled in gear, fell overboard and died fishing for Tanner crab.

The NOAA Office of Law Enforcement (OLE) reported:

- one vessel delivered north region snow crab to a south region port in an incident related to Bering Sea ice conditions near St. Paul.
- OLE received, but did not grant, several requests for waivers from the regional delivery requirements.
- OLE and two partnering agencies found 15 IFQ account overages (i.e., in 1.9% of 787 offloads)

Catch Monitoring

There was no change in the number of motion-compensated scales from the previous year, and no major problems were reported with the hopper scales during the 2008/09 crab fisheries.

- NOAA Fisheries received 14 Catch Monitoring Plans (CMPs) for inspection and approval, the same number of CMPs as in the 2007/08 fishing year.

Reporting

eLandings

- 895 CR Program landings were made:
 - 108 for Adak and CDQ fisheries, slightly higher than the prior year
 - 787 for IFQ fisheries, of which:
 - 761 IFQ reports were submitted using eLandings.

Economic Data Collection Program (EDR)

The EDR program is focused on collecting production, cost, earnings, and employment information from harvesting and processing sectors of crab fisheries to evaluate effects of the Program over time. High compliance indicates the EDR requirement is routine for active participants.

- 108 persons had EDR requirements for calendar year 2008; all submitted full EDRs or certifications.
- The number of EDRs submitted totaled 104.

Loans

- With authority to provide loans to captain and crew and Council recommendations available for consideration, NOAA Fisheries' CR loan program process is nearing completion.

Fees and Cost Recovery

Under the Magnuson-Stevens Fishery Conservation and Management Act (MSA), costs for management and enforcement of IFQ programs are recoverable from participants, up to a maximum of 3 percent of the ex-vessel value of the crab.

- The estimated value of the fishery (based on what we billed for 2008/09) was \$212,412,973.
- RAM sent 22 RCRs estimated fee liability statements for total Program costs of \$3,195,760
- Contracts/Training and Personnel remain among the highest Program costs.
- The fee percentage for the 2008/09 crab-fishing year was 1.05 percent due to residual funds left over from the prior year.