

Snow Crab PSC Limits Negotiating Committee Agreement

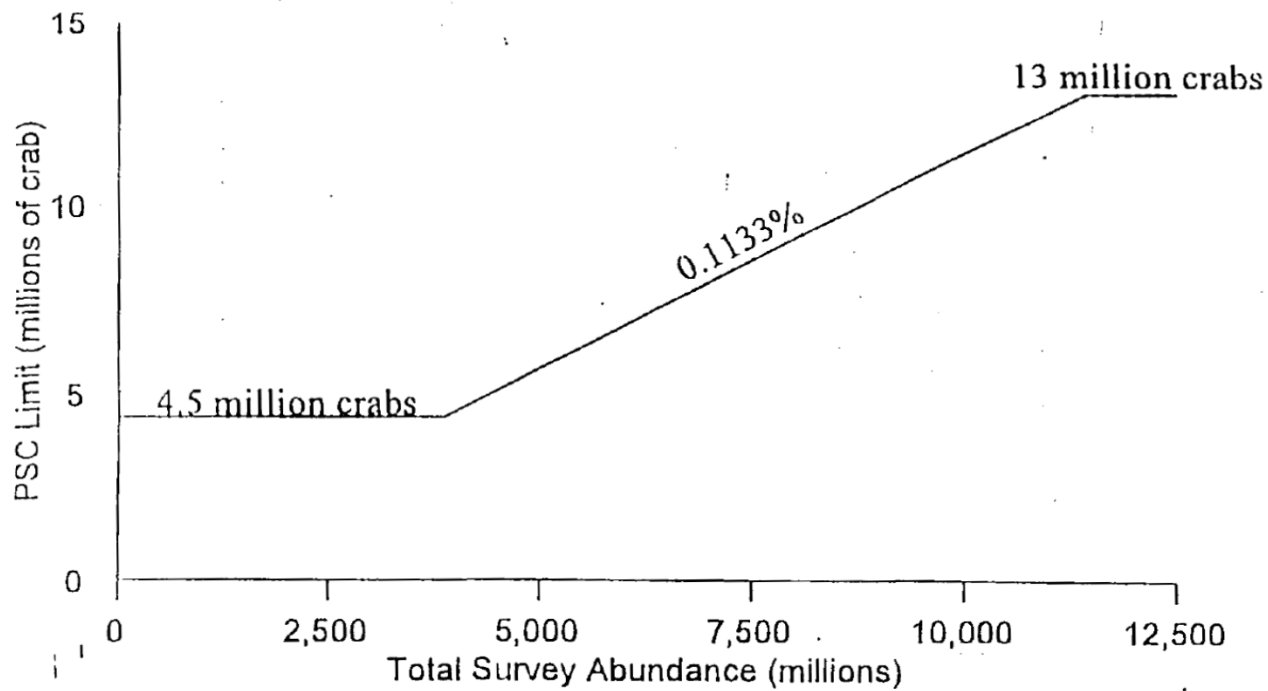
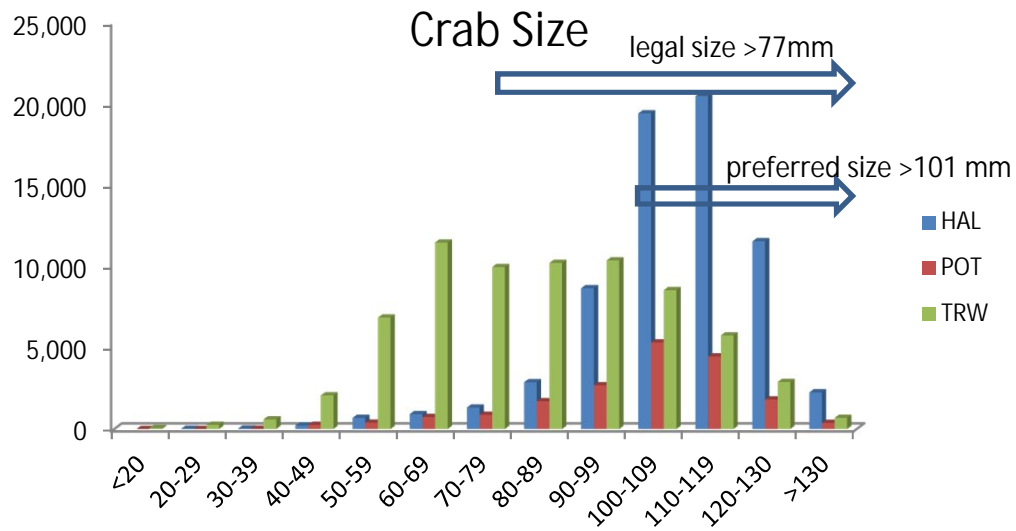
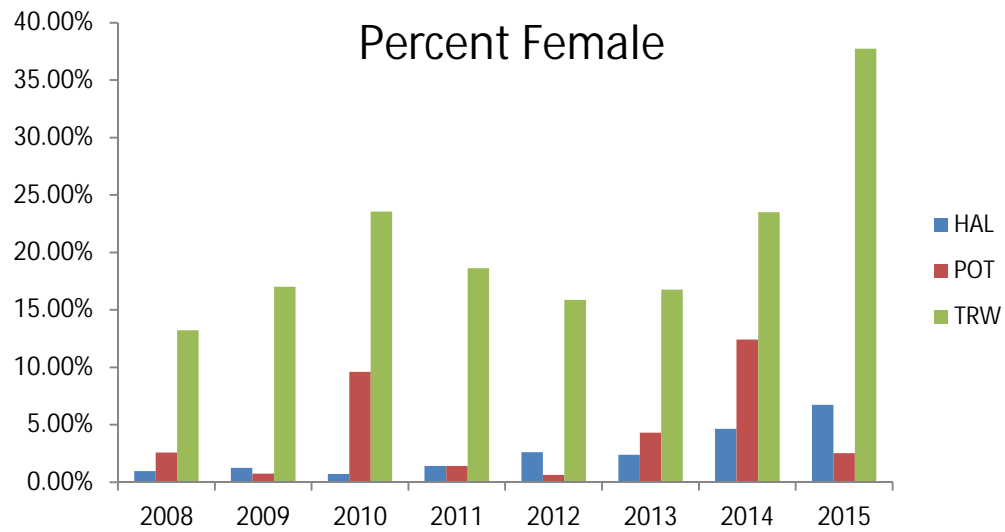


Figure 2. Alternative 4 provided species catch limits for Bering Sea snow crab (*Callinectes*) examined by this analysis.



Survey biomass

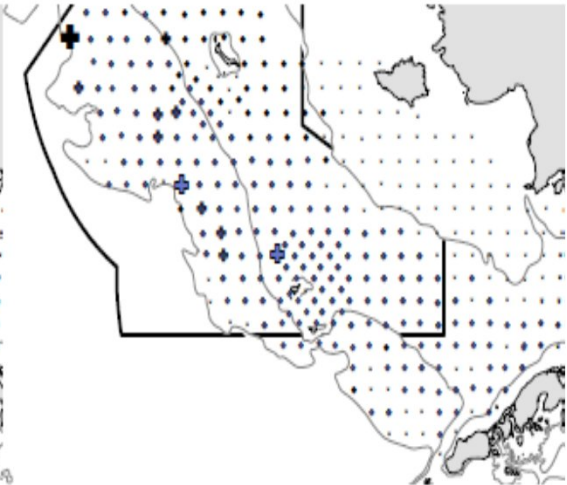
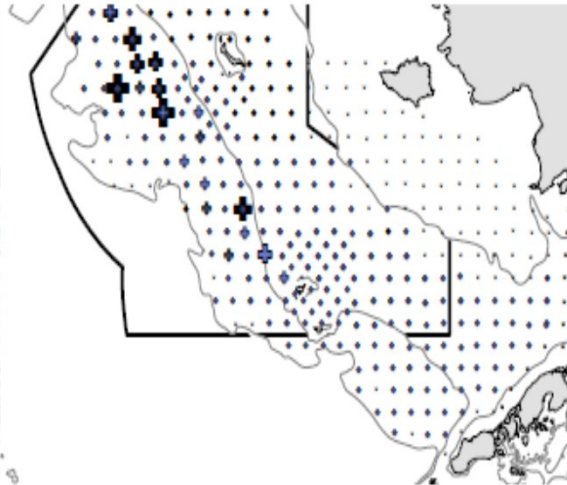
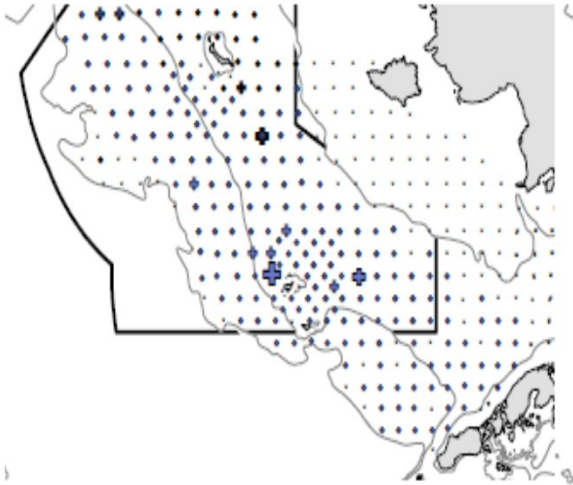
Cross size: 12; 24; 36; 48;
60 thousand crab per nm²)

BLACK=Females; **BLUE**=Males

2010

2011

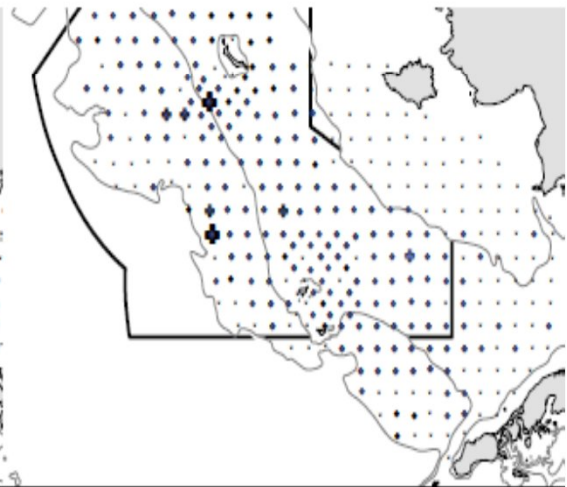
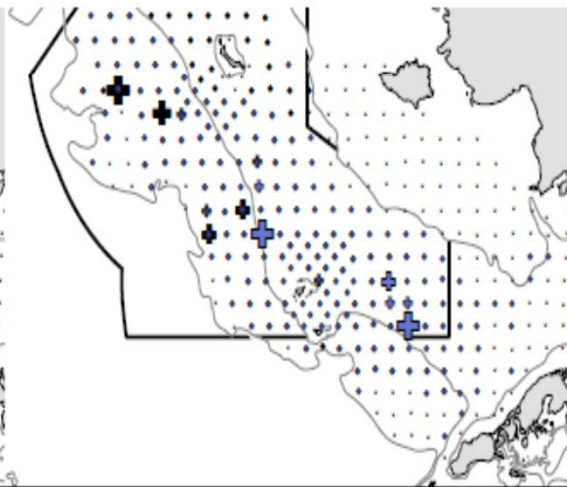
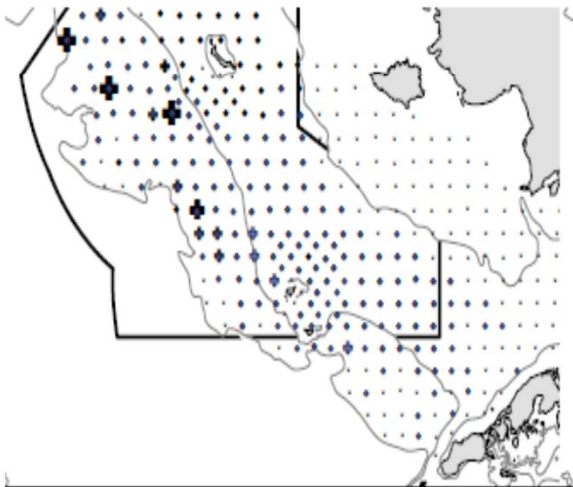
2012



2013

2014

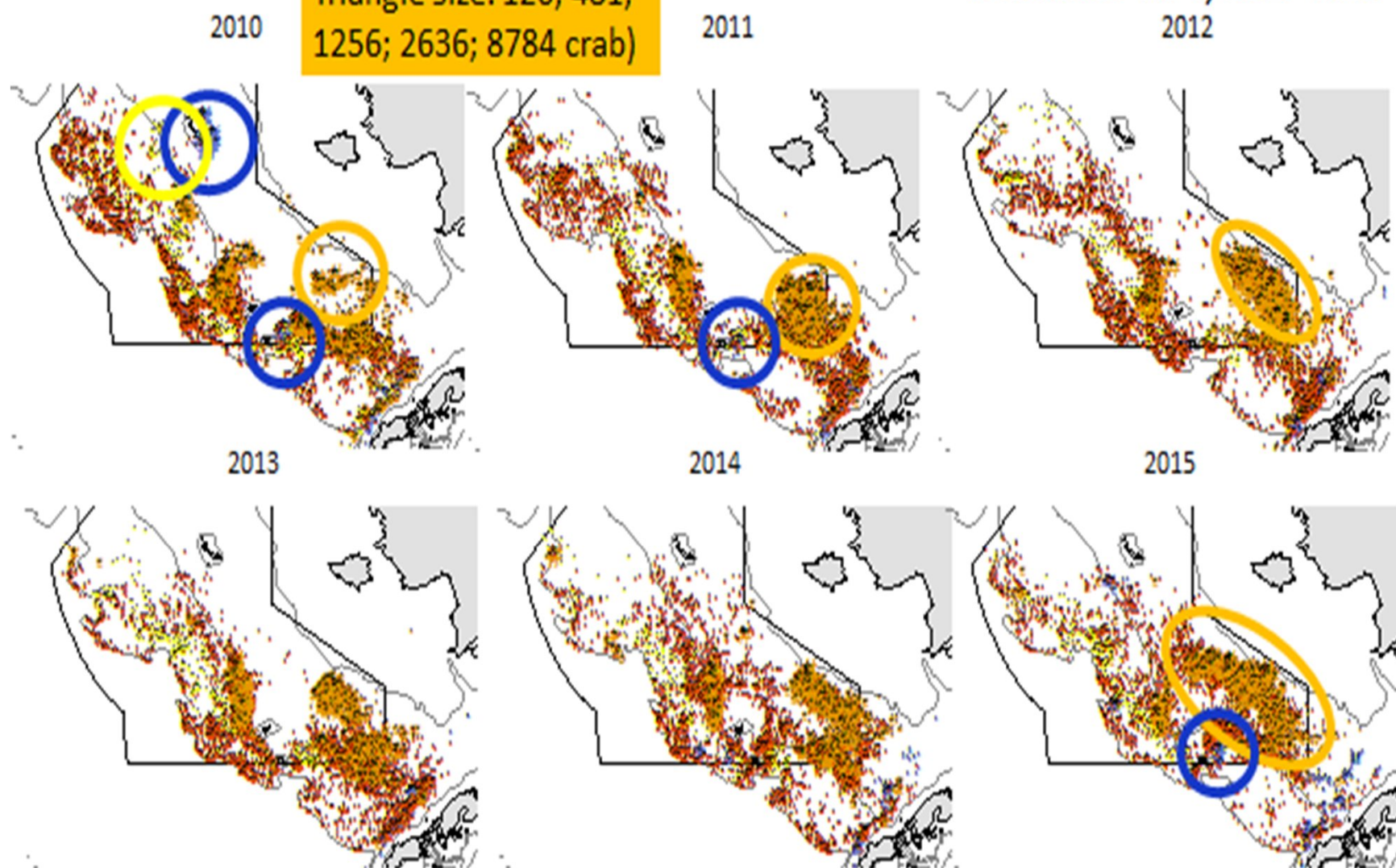
2015



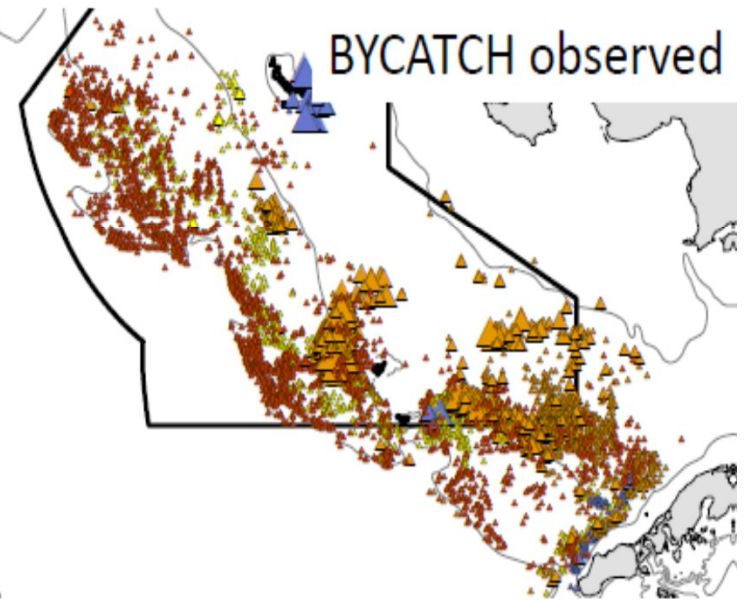
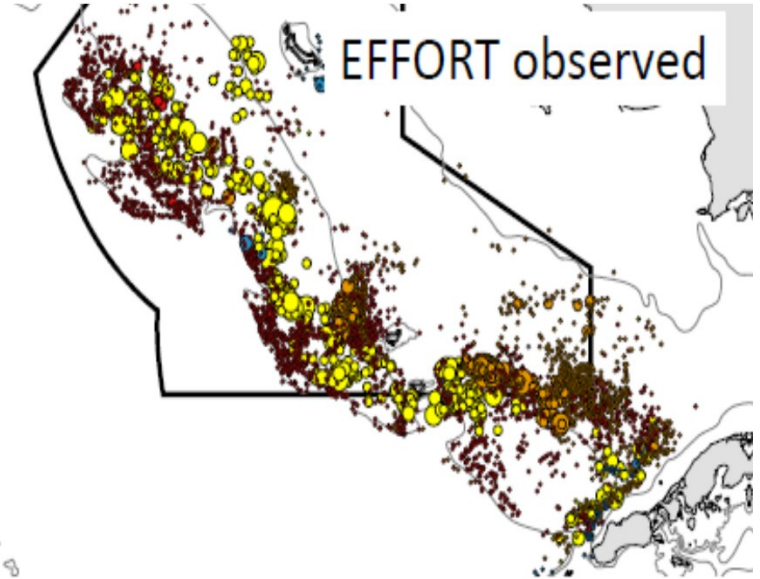
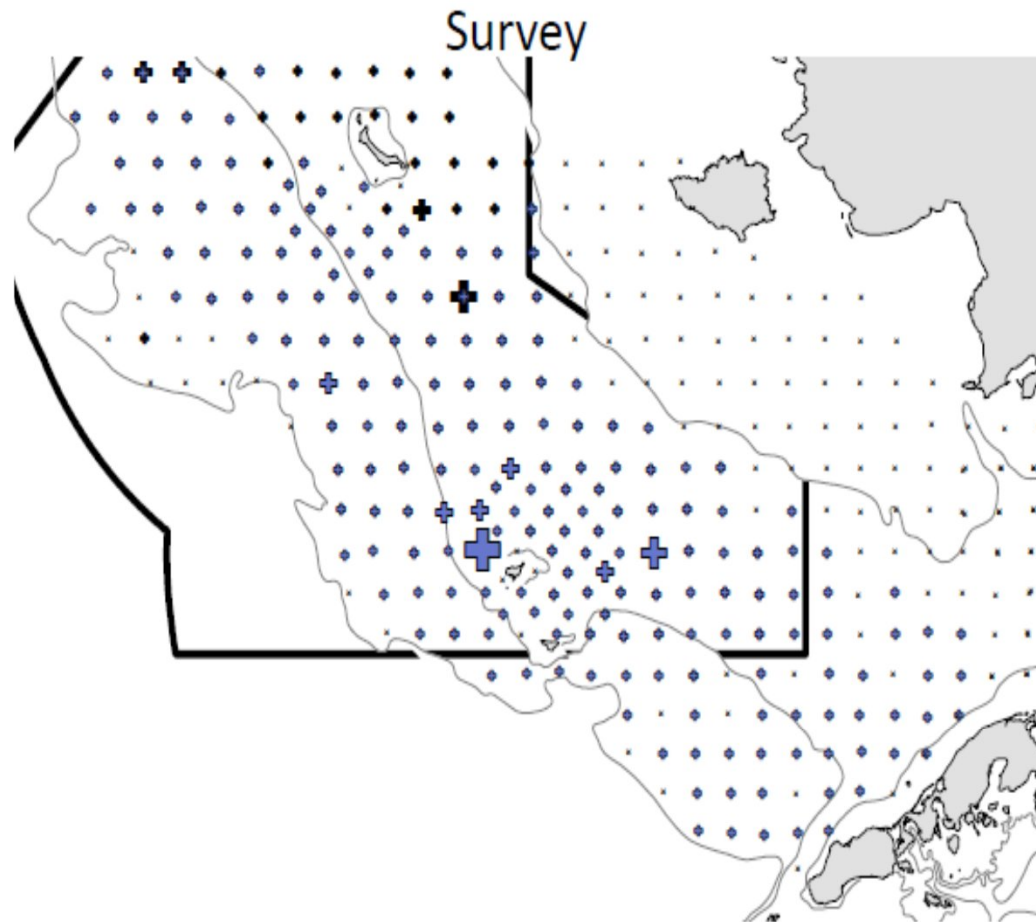
Snow crab bycatch count (observed)

Triangle size: 126; 481;
1256; 2636; 8784 crab

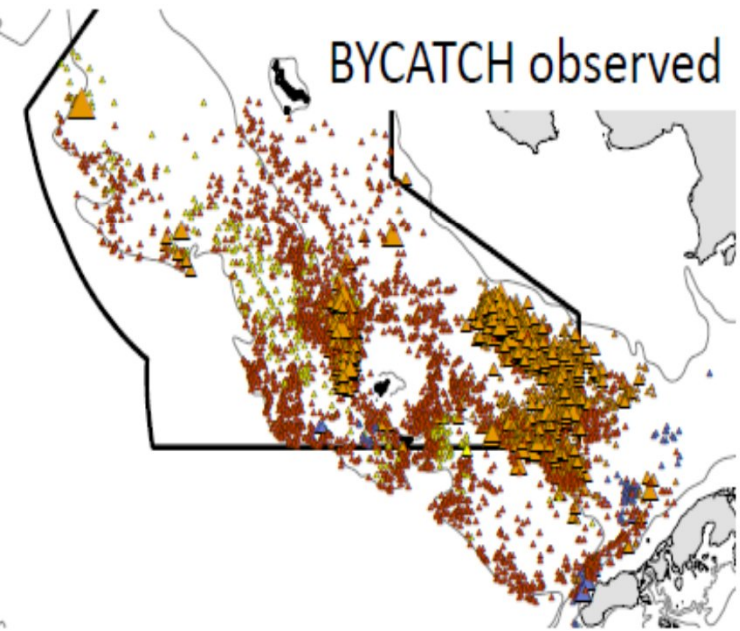
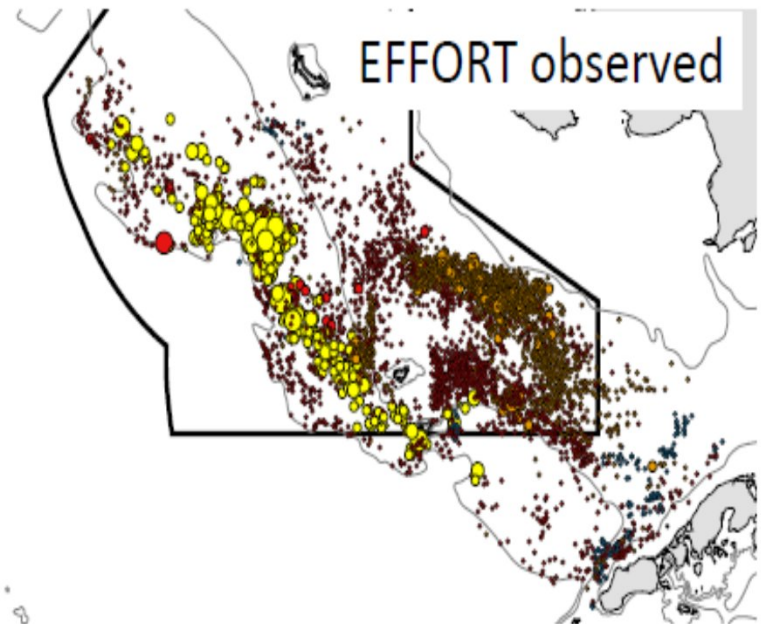
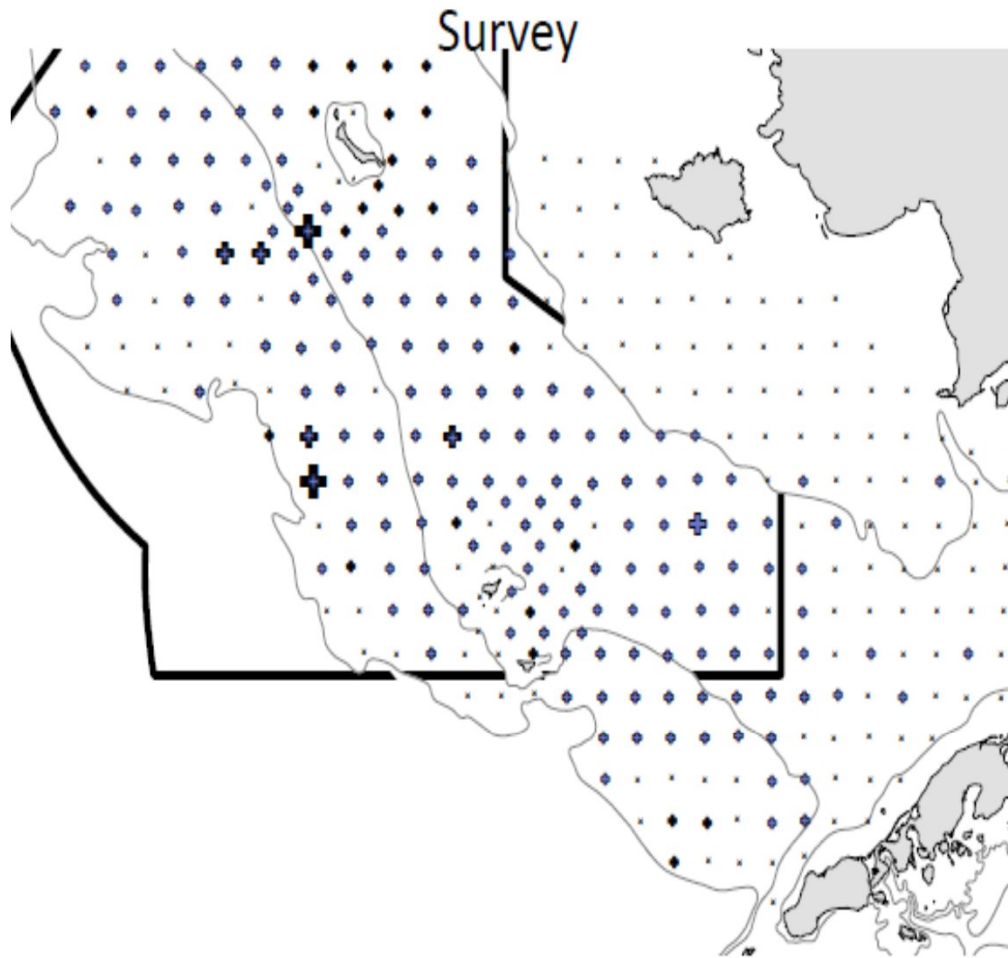
YELLOW=PTR; BLUE=POT;
ORANGE=NPT; RED=HAL



2010



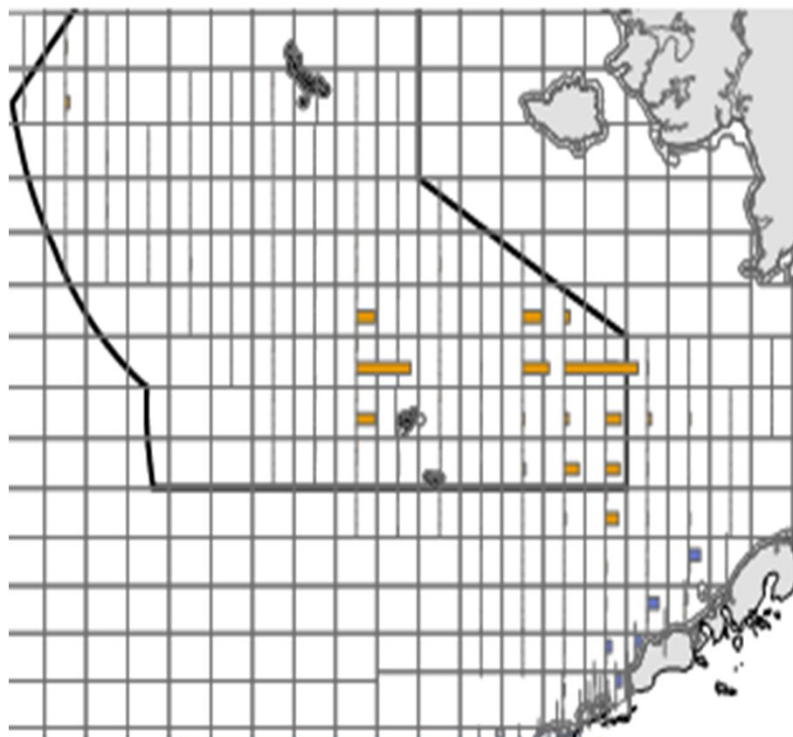
2014



2010 PSC Estimates by SOA stat areas

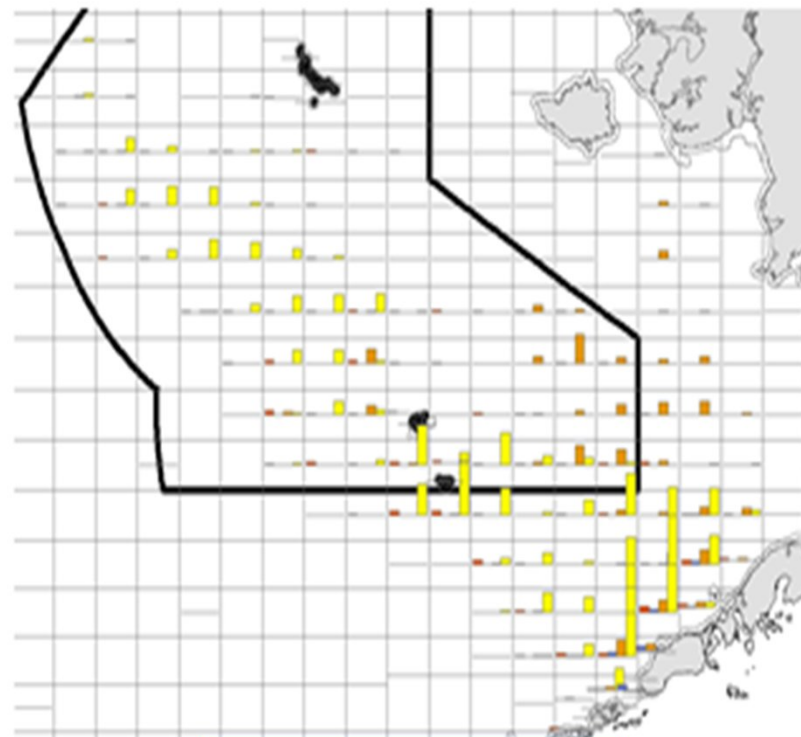
YELLOW=PTR; BLUE=POT;
ORANGE=NPT; RED=HAL

Snow crab total bycatch



Largest bar: 56,000 crab

GF total effort

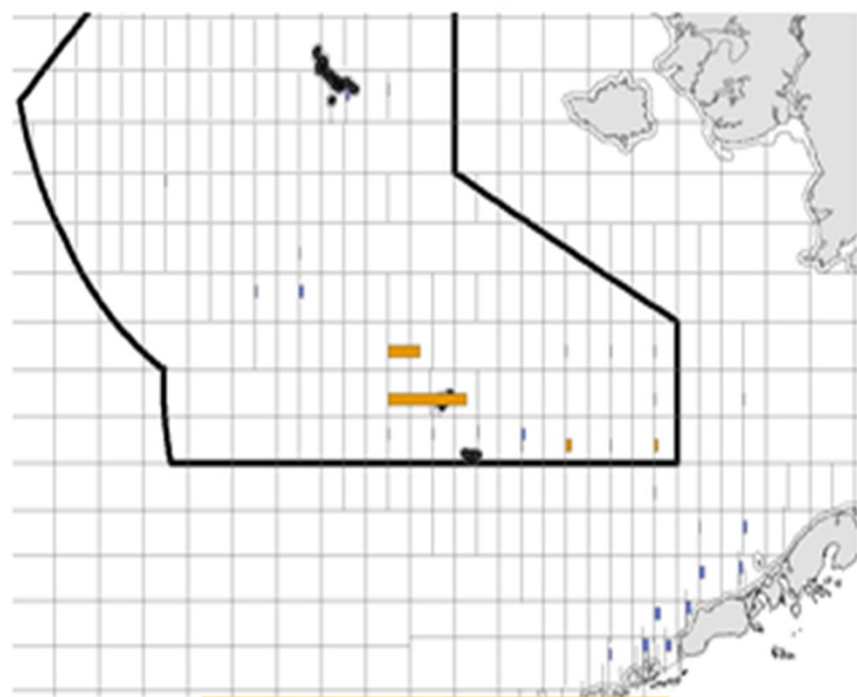


Largest bar: 60,000 t

2014 PSC Estimates by SOA stat areas

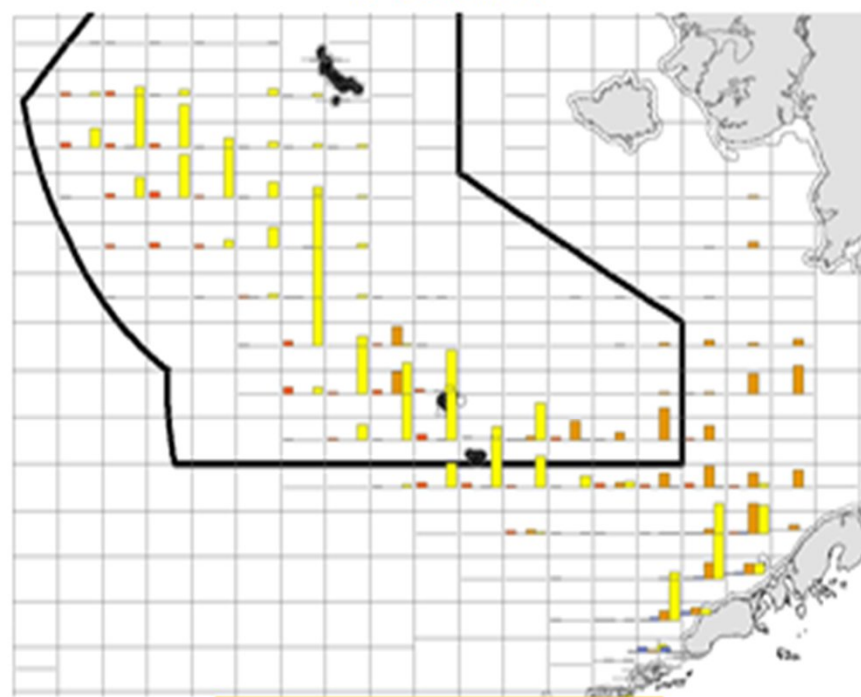
YELLOW=PTR; BLUE=POT;
ORANGE=NPT; RED=HAL

Snow crab total bycatch



Largest bar: 520,000 crab

GF total effort



Largest bar: 32,000 t

GF effort by gear type (observed)

Circle size: 71; 142;
213; 285; 356 tons)

YELLOW=PTR; BLUE=POT;
ORANGE=NPT; RED=HAL

