



NOAA
FISHERIES

2018 BSAI Northern Rockfish (partial) assessment

Paul Spencer and Jim Ianelli

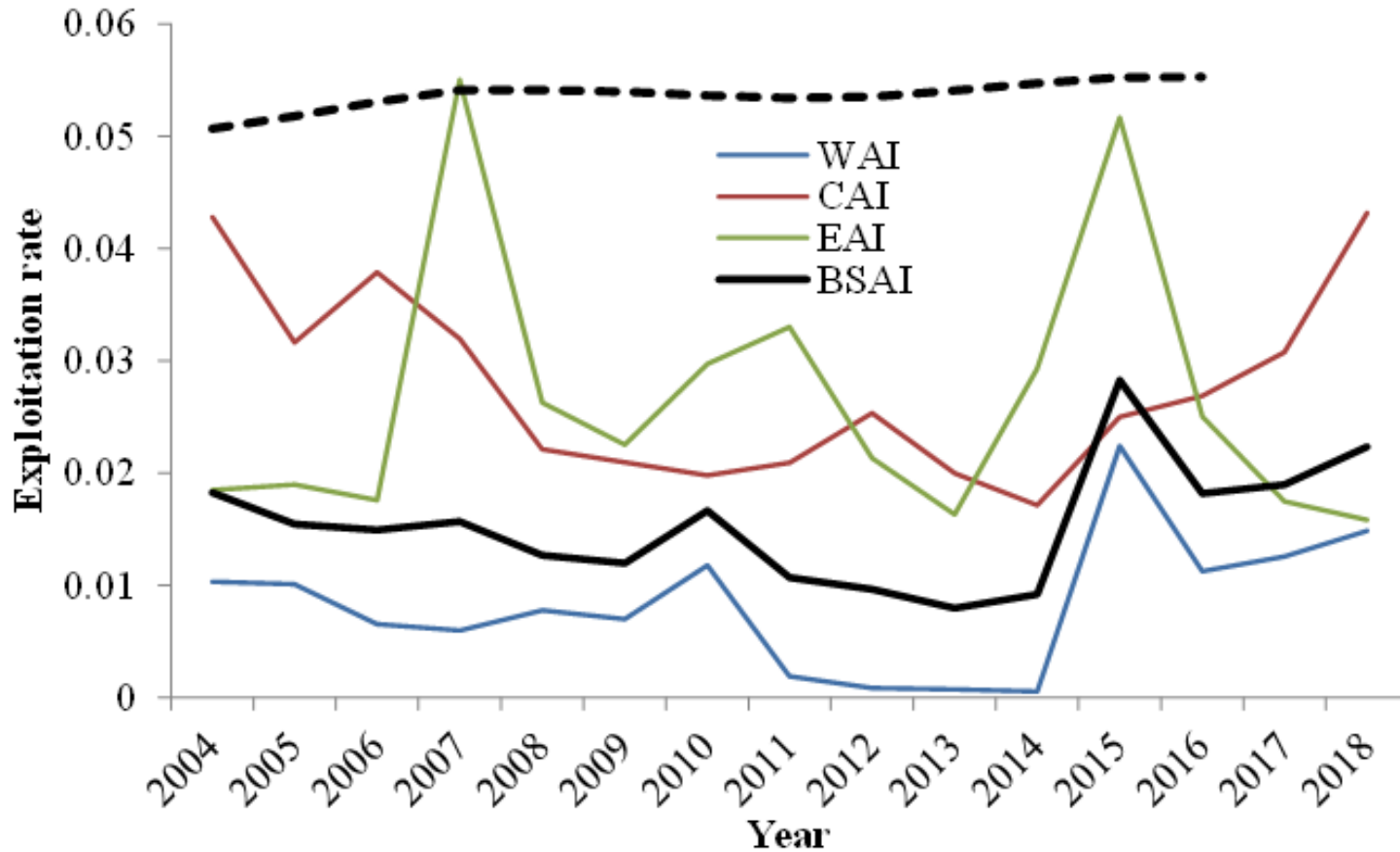
Alaska Fisheries Science Center

AI survey biomass estimates have shown some variability

Year	WAI	CAI	EAI	SBS	Total
2010	143,953 (0.29)	51,331 (0.40)	21,846 (0.50)	189 (0.52)	217,319 (0.22)
2012	216,325 (0.65)	52,674 (0.40)	15,615 (0.60)	550 (0.73)	285,164 (0.50)
2014	346,392 (0.38)	48,049 (0.44)	76,787 (0.79)	1,668 (0.80)	472,895 (0.31)
2016	124,310 (0.21)	78,869 (0.37)	48,382 (0.52)	1,656 (0.55)	253,217 (0.18)
2018	98,756 (0.24)	59,500 (0.40)	20,096 (0.63)	34,120 (0.70)	212,472 (0.20)



Exploitation rates



Management recommendations

Quantity	As estimated or specified last year for:		As estimated or recommended this year for:	
	2018	2019	2019*	2020*
<i>M</i> (natural mortality rate)	0.046	0.046	0.046	0.046
Tier	3a	3a	3a	3a
Projected total (age 3+) biomass (t)	246,160	244,963	244,196	242,426
Female spawning biomass (t)				
Projected	106,486	104,699	104,201	102,480
<i>B</i> _{100%}	164,674	164,674	164,674	164,674
<i>B</i> _{40%}	65,870	65,870	65,870	65,870
<i>B</i> _{35%}	57,636	57,636	57,636	57,636
<i>F</i> _{OFL}	0.080	0.080	0.080	0.080
<i>maxF</i> _{ABC}	0.065	0.065	0.065	0.065
<i>F</i> _{ABC}	0.065	0.065	0.065	0.065
OFL (t)	15,888	15,563	15,507	15,180
maxABC (t)	12,975	12,710	12,664	12,396
ABC (t)	12,975	12,710	12,664	12,396
Status	As determined last year for: for:		As determined this year for: for:	
	2016	2017	2017	2018
Overfishing	No	n/a	No	n/a
Overfished	n/a	No	n/a	No
Approaching overfished	n/a	No	n/a	No