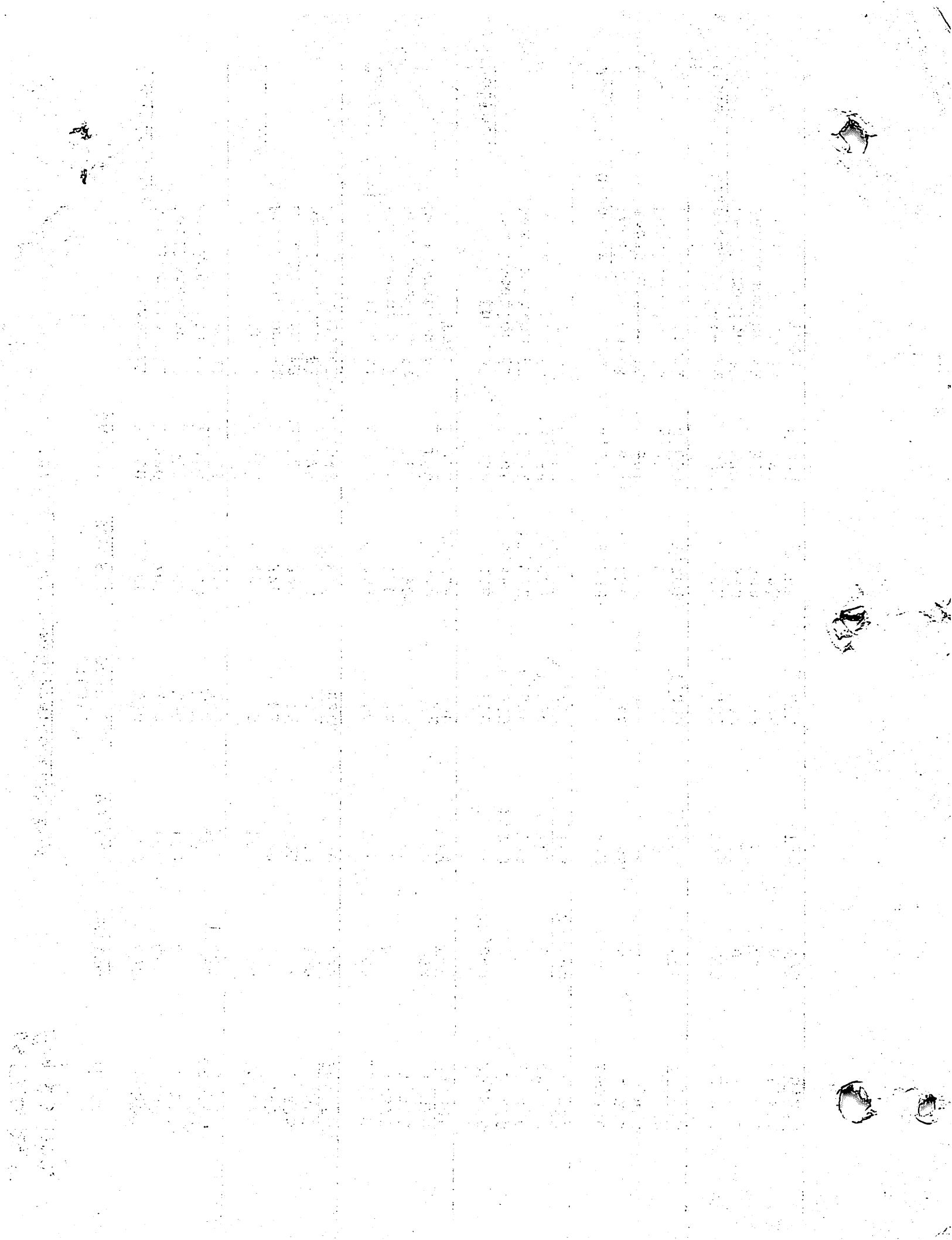


1979 Gulf of Alaska Reallocations

US State Dept
Aug 23, 1979.

		<u>JAPAN</u>	<u>U.S.S.R.</u>	<u>REPUBLIC OF KOREA</u>	<u>POLAND</u>	<u>MEXICO</u>	<u>TOTAL</u>
<u>Pacific Cod</u>	Initial	3,200	1,500	100	100	4,400	9,300
	Reallocation #1	1,500	702	200	100	0	2,502
	Reallocation #2	1,500	702	200	100	0	2,502
	Reallocation #3	1,423	640	245	0	0	2,308
	Total	7,623	3,544	745	300	4,400	16,612
<u>Flounders</u>	Initial	14,898	1,402	100	100	100	16,600
	Reallocation #1	2,160	220	25	20	0	2,425
	Reallocation #2	2,160	220	25	20	0	2,425
	Reallocation #3	2,375	995	680	450	100	4,600
	Total	21,593	2,837	830	590	200	26,050
<u>Atka Mackerel</u>	Initial	1,528	16,808	100	764	100	19,300
	Reallocation #1	115	1,190	15	55	0	1,375
	Reallocation #2	115	1,190	15	55	0	1,375
	Reallocation #3	160	1,670	20	90	50	1,990
	Total	1,918	20,858	150	964	150	24,040
<u>Pollock</u>	Initial	232	345	170	53	20,000	20,800
	Reallocation #1	9,901	15,382	6,829	1,338	0	33,450
	Reallocation #2	8,341	12,942	6,829	5,338	0	33,450
	Reallocation #3	12,164	19,003	9,966	7,717	0	48,850
	Total	30,638	47,672	23,794	14,446	20,000	136,550
<u>Pacific Ocean Perch</u>	Initial	4,030	6,028	2,910	943	2,089	16,000
	Reallocation #1	601	838	445	91	0	1,975
	Reallocation #2	601	838	445	91	0	1,975
	Reallocation #3	1,421	0	204	0	0	1,625
	Total	6,653	7,704	4,004	1,125	2,089	21,575
<u>Other Rockfishes</u>	Initial	529	792	382	124	273	2,100
	Reallocation #1	277	390	178	30	0	875
	Reallocation #2	307	390	178	0	0	875
	Reallocation #3	480	20	925	0	0	1,425
	Total	1,593	1,592	1,663	154	273	5,275



1979 Gulf of Alaska Reallocations (Cont'd.)

		<u>JAPAN</u>	<u>U.S.S.R.</u>	<u>REPUBLIC OF KOREA</u>	<u>POLAND</u>	<u>MEXICO</u>	<u>TOTAL</u>
<u>Squid</u>	Initial	50	50	50	50	800	1,000
	Reallocation #1	65	70	60	55	0	250
	Reallocation #2	65	70	60	55	0	250
	Reallocation #3	<u>120</u>	<u>130</u>	<u>110</u>	<u>105</u>	<u>0</u>	<u>465</u>
	Total	<u>300</u>	<u>320</u>	<u>280</u>	<u>265</u>	<u>800</u>	<u>1,965</u>
<u>Other Species</u>	Initial	2,772	4,147	2,002	649	1,430	11,000
	Reallocation #1	365	490	225	95	0	1,175
	Reallocation #2	535	320	225	95	0	1,175
	Reallocation #3	<u>920</u>	<u>550</u>	<u>385</u>	<u>165</u>	<u>0</u>	<u>2,020</u>
	Total	<u>4,592</u>	<u>5,507</u>	<u>2,837</u>	<u>1,004</u>	<u>1,430</u>	<u>15,370</u>
<u>Sablefish</u>	Initial	4,185	100	465	50	100	4,900
	Reallocation #1A	765	0	85	0	0	850
	Reallocation #3	<u>1,090</u>	<u>125</u>	<u>135</u>	<u>0</u>	<u>0</u>	<u>1,350</u>
	Total	<u>6,040</u>	<u>225</u>	<u>685</u>	<u>50</u>	<u>100</u>	<u>7,100</u>
<u>TOTAL</u>	Initial	31,424	31,172	6,279	2,833	29,292	101,000
	Reallocation #1	14,984	19,282	7,977	1,784	0	44,027
	Reallocation #2	13,624	16,672	7,977	5,754	0	44,027
	Reallocation #3	<u>20,153</u>	<u>23,133</u>	<u>12,670</u>	<u>8,527</u>	<u>150</u>	<u>64,633</u>
	Total	<u>80,185</u>	<u>90,259</u>	<u>34,903</u>	<u>18,898</u>	<u>29,442</u>	<u>253,687</u>

Note: All figures are in metric tons.
 Reallocation #1 made January 23, 1979.
 Reallocation #1A made March 22, 1979.
 Reallocation #2 made June 8, 1979.
 Reallocation #3 made August , 1979.

August 16 1979

