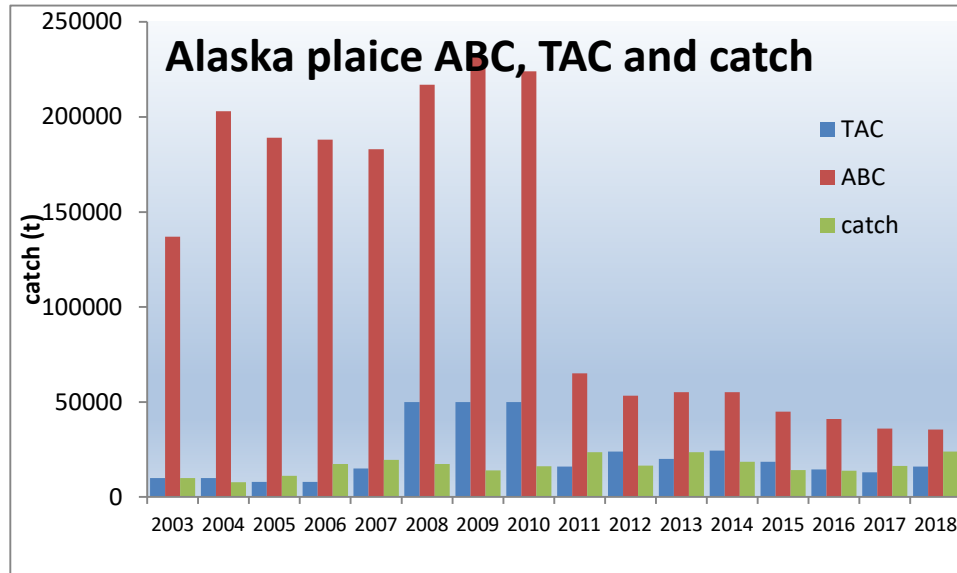
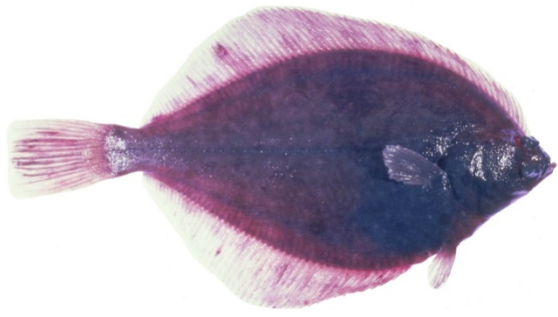


Alaska plaice

by

Wilderbuer and Nichol



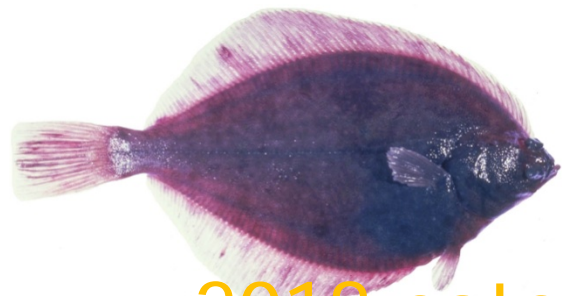




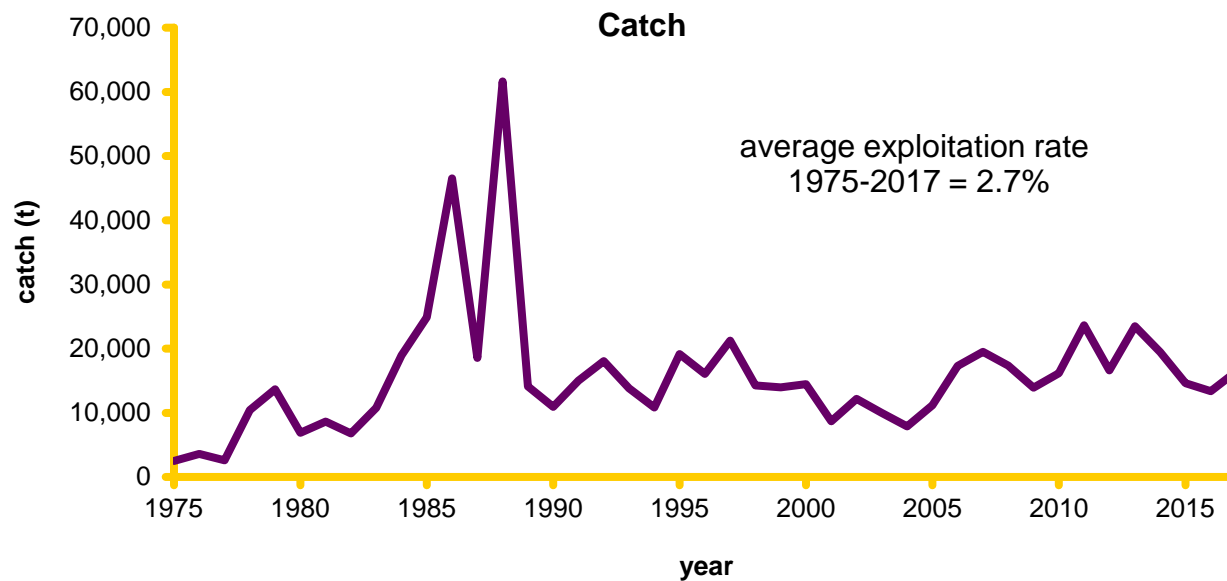
Alaska plaice

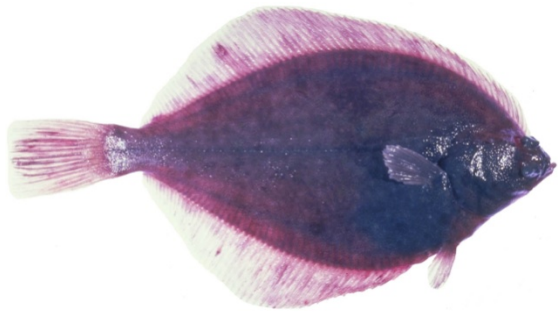


Quantity	As estimated or <i>specified last year for:</i>		As estimated or <i>recommended this year for:</i>	
	2018	2019	2019	2020
M (natural mortality rate)	0.13	0.13	0.13	0.13
Tier	3a	3a	3a	3a
Projected total (3+) biomass (t)	417,300	412,000	400,700	394,700
Female spawning biomass (t)				
$B_{100\%}$	317,360	317,360	317,360	317,360
$B_{40\%}$	126,900	126,900	126,900	126,900
$B_{35\%}$	111,100	111,100	111,100	111,100
F_{OFL}	0.149	0.149	0.149	0.149
$maxF_{ABC}$	0.124	0.124	0.124	0.124
F_{ABC}	0.124	0.124	0.124	0.124
OFL (t)	41,170	38,800	39,880	37,860
maxABC (t)	34,590	32,700	33,600	31,900
Status	As determined <i>last year for:</i>		As determined <i>this year for:</i>	
	2016	2017	2017	2018
Overfishing	no	n/a	No	n/a
Overfished	n/a	no	n/a	no
Approaching overfished	n/a	no	n/a	no

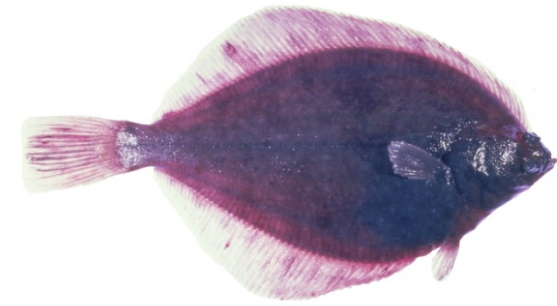


2018 catch = 22,507 t (Oct. 13)
average 1975-2017 exploitation rate = 2.7%

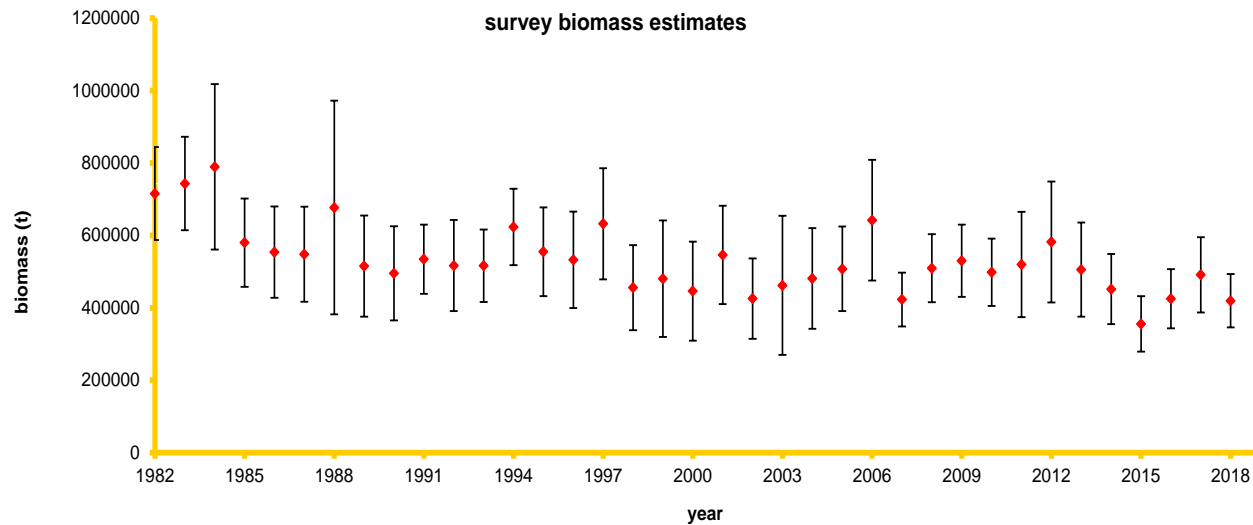


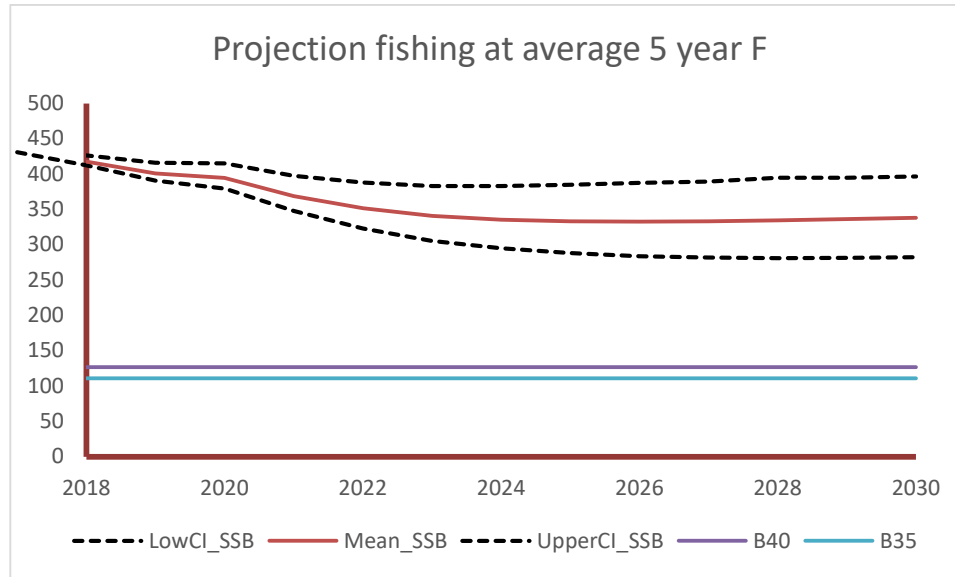
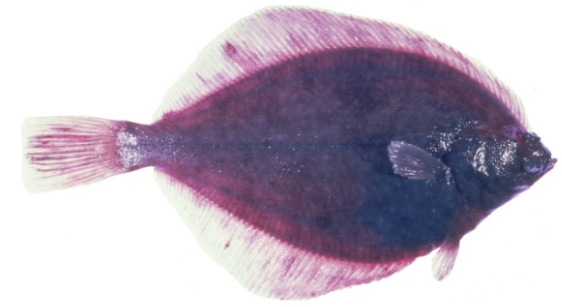
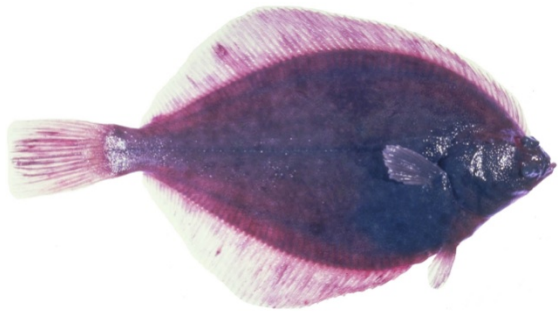


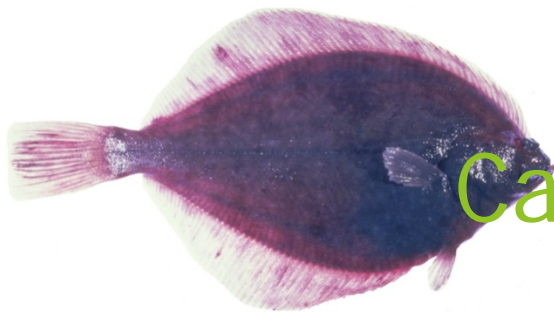
Survey biomass trend



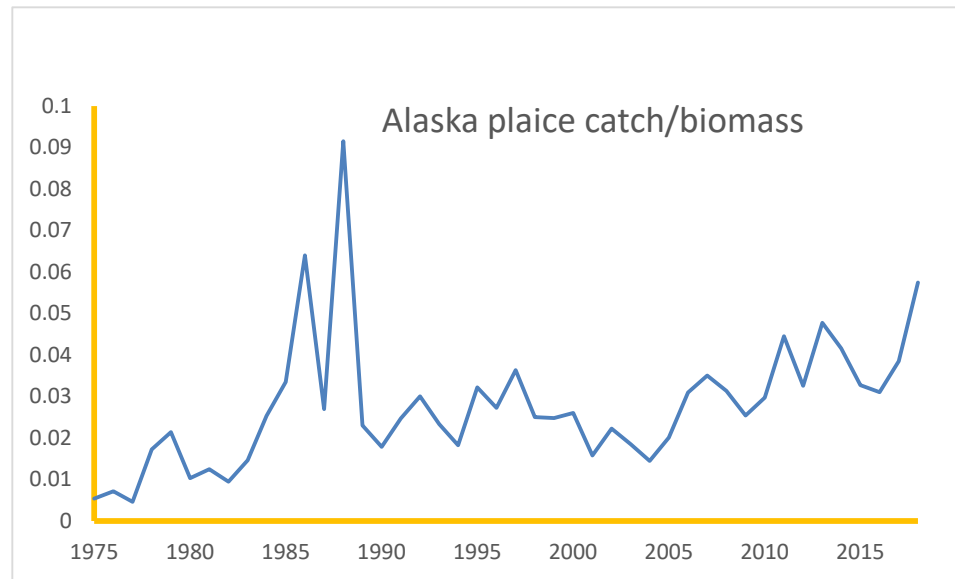
The 2018 shelf trawl survey abundance estimate decreased 15% from the 2017 estimate and the stock has been at a lower level relative to the time-series for the past 5 years.





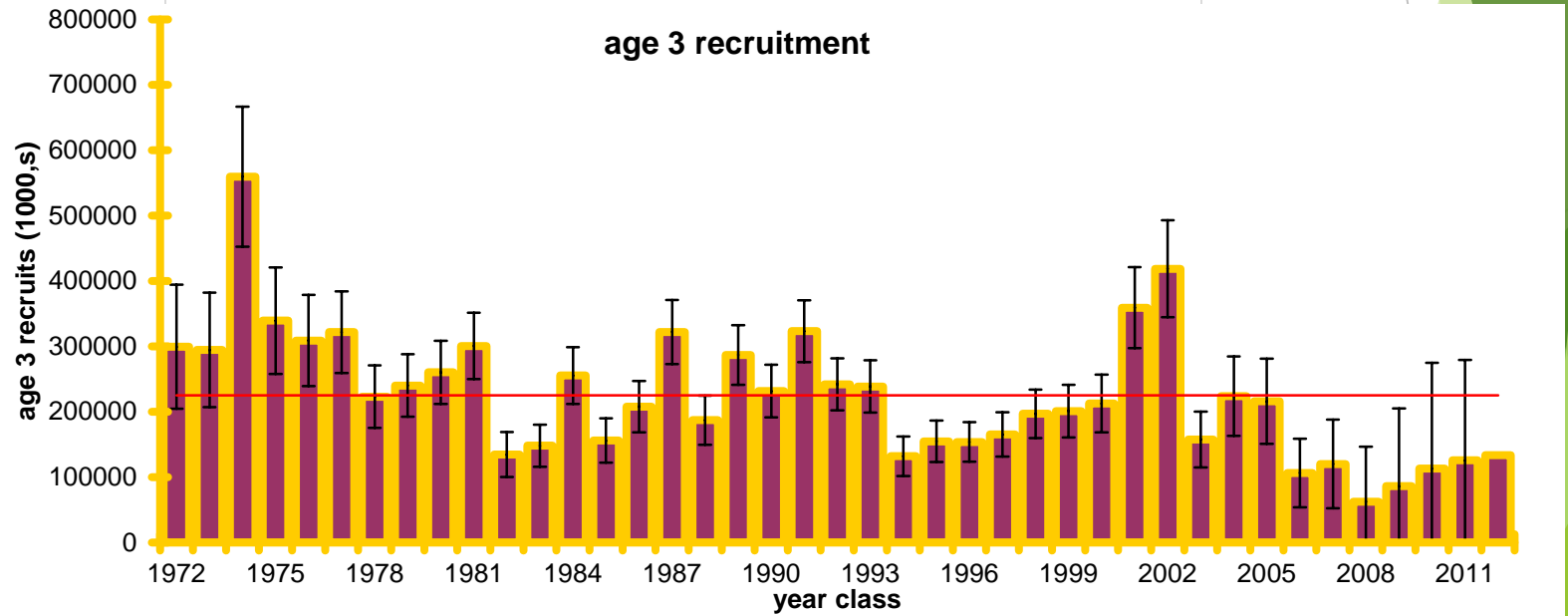
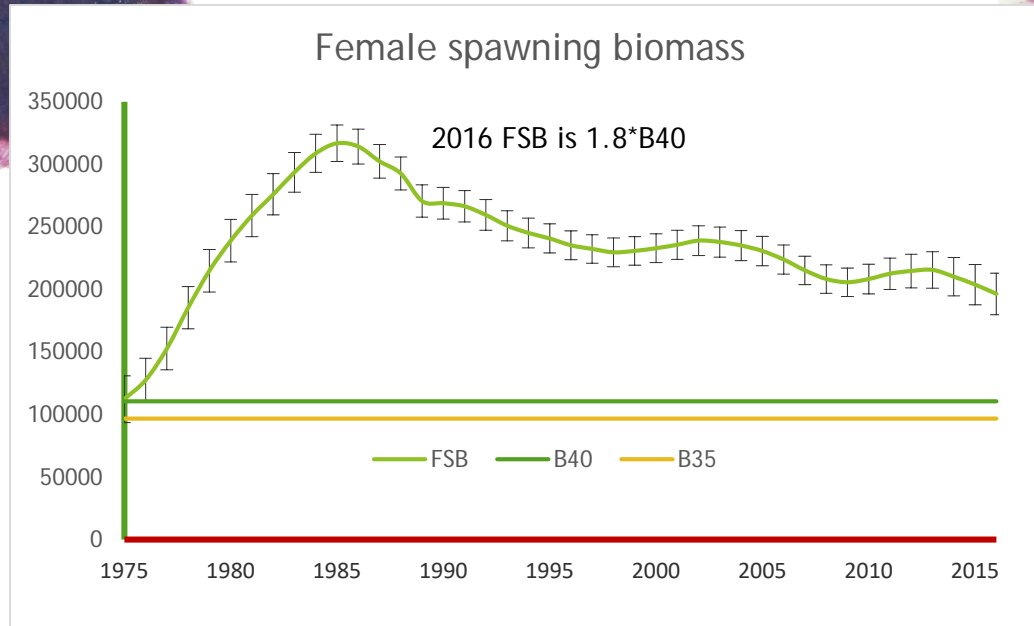


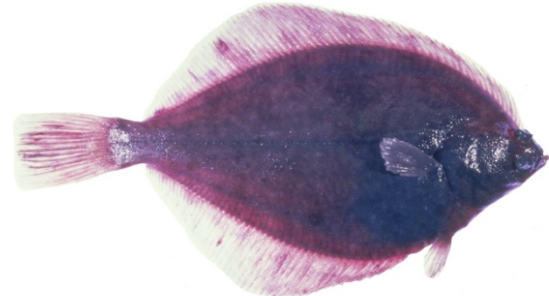
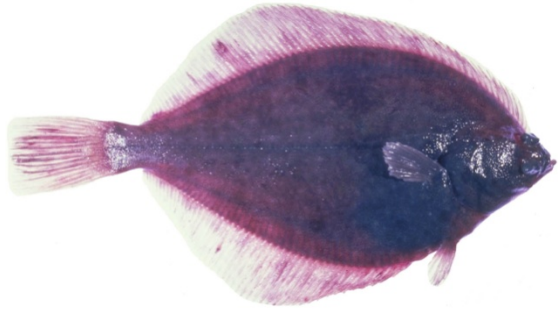
Catch/biomass

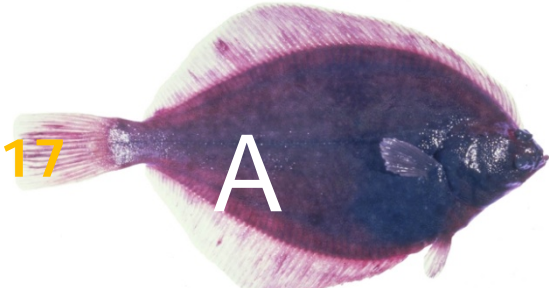


Exploitation fraction has averaged 3% from 1975-2018. Biomass is model estimate of total biomass.

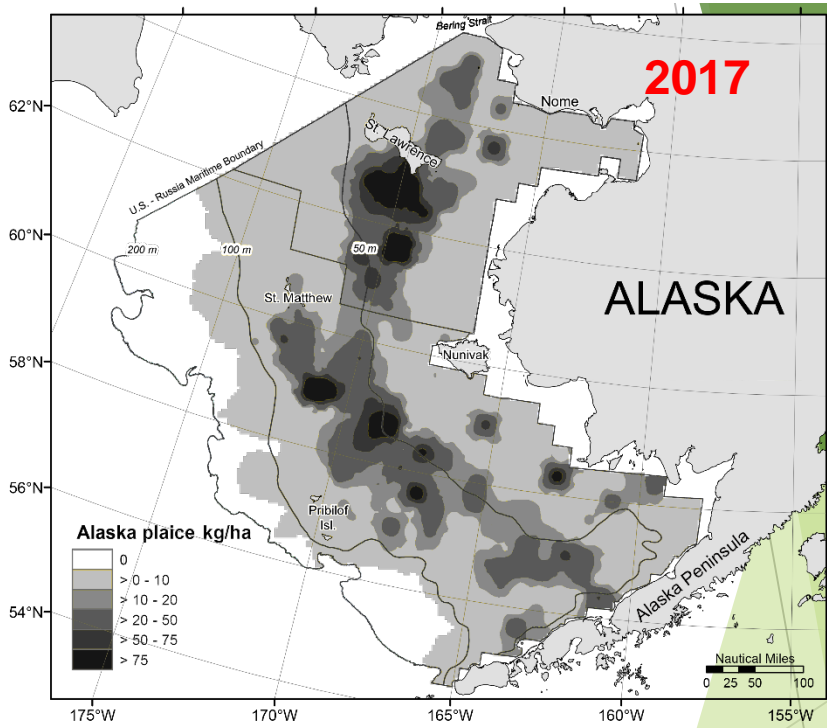
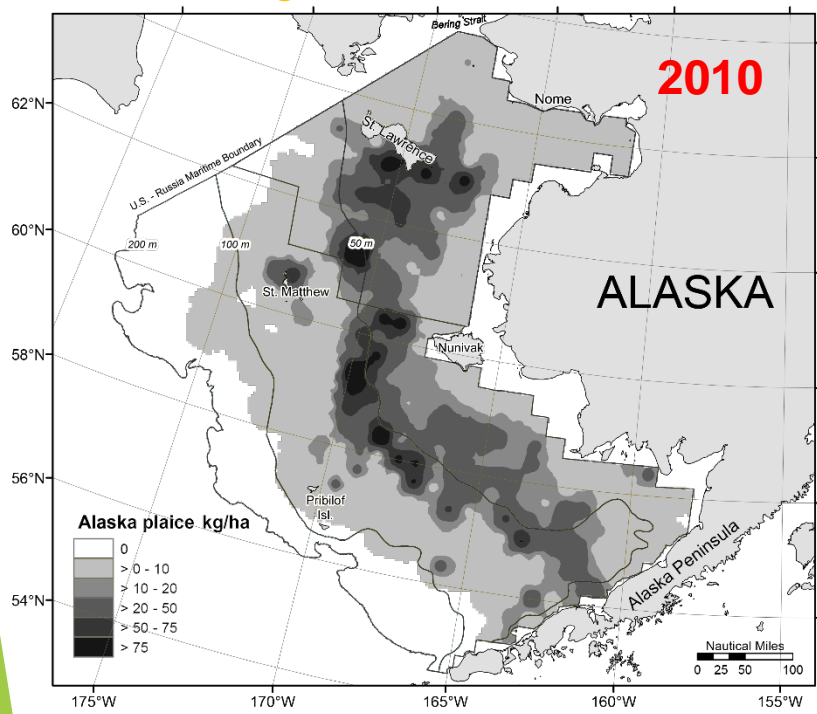
Model results from last year







Alaska plaice distribution in the 2010 and 2017 Bering Sea and northern Bering Sea trawl survey



- ▶ 38% of the 2010 total biomass was found in the northern Bering Sea.
- ▶ 40% of the 2017 total biomass was found in the northern Bering Sea