



**NOAA
FISHERIES**

**Alaska Fisheries
Science Center**

Assessment of Pacific cod in the Aleutian Islands

Grant Thompson and Wayne Palsson

November 14, 2017

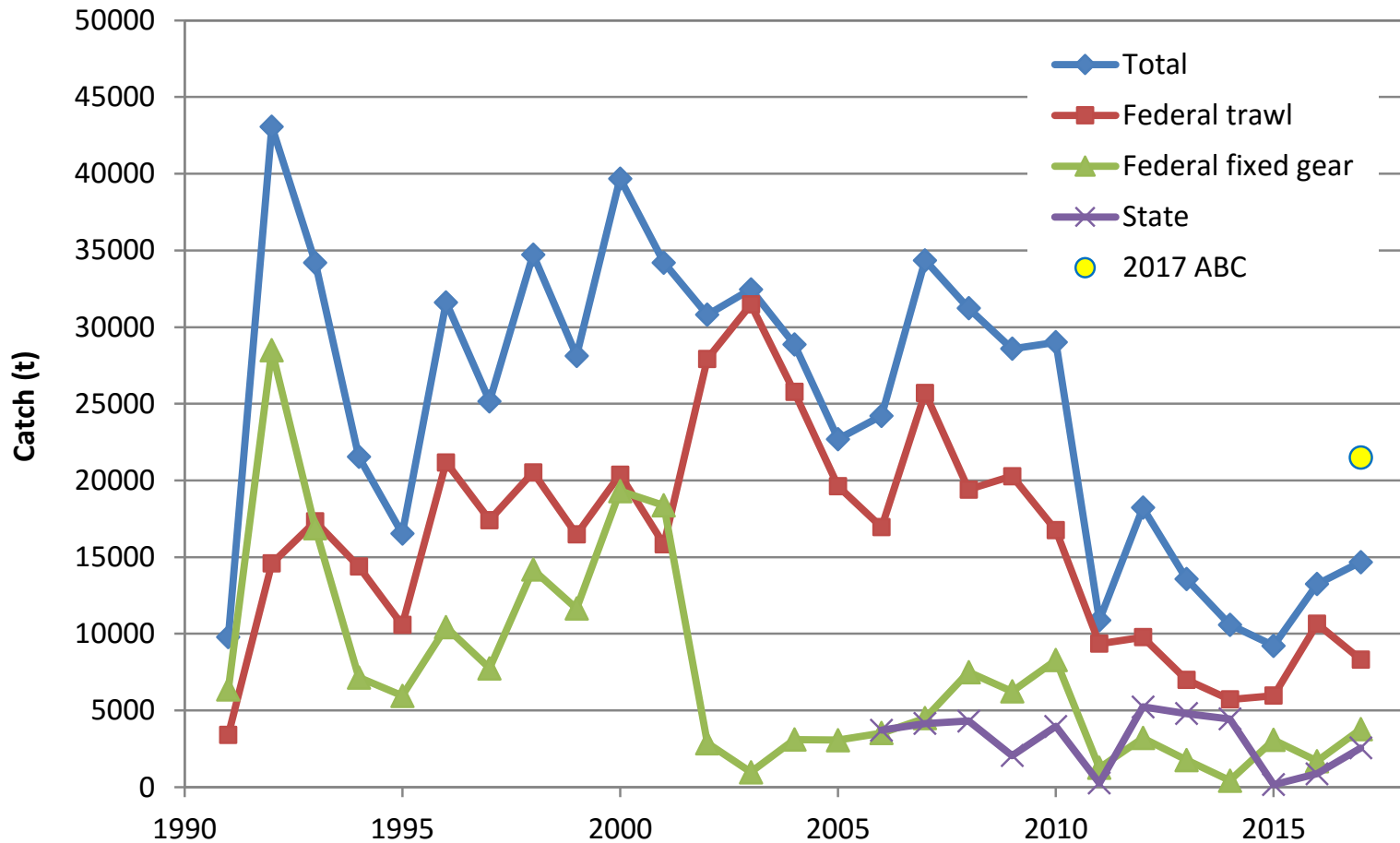
Team and SSC comments

Comments specific to this assessment

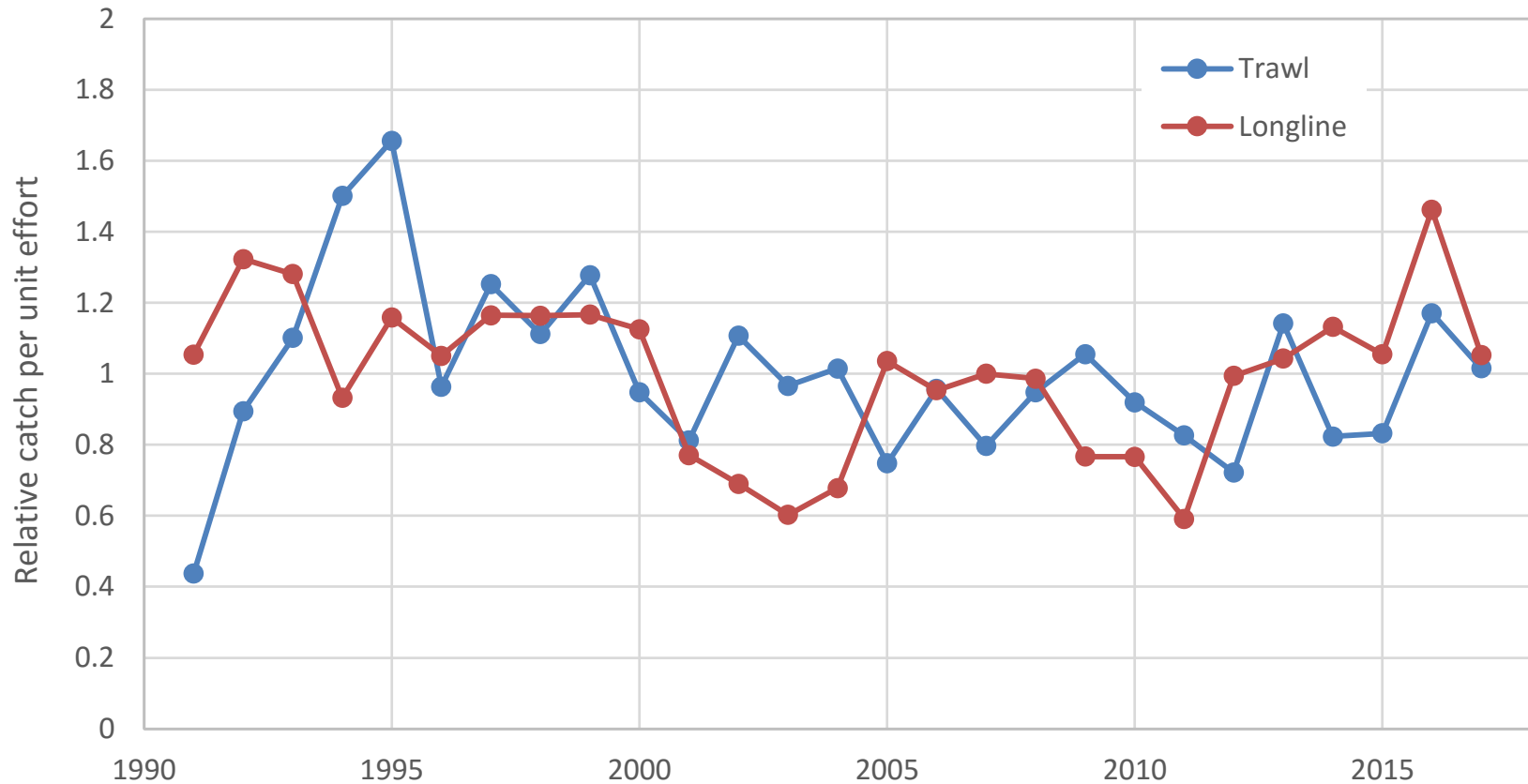
- Total of 17 comments considered by the Subcommittee
 - 4 from Subcommittee, 3 from full Team, and 10 from SSC
- In the end, however the Subcommittee did not recommend any models or non-model analyses, so that more time could be devoted to the EBS Pcod assessment

Data highlights

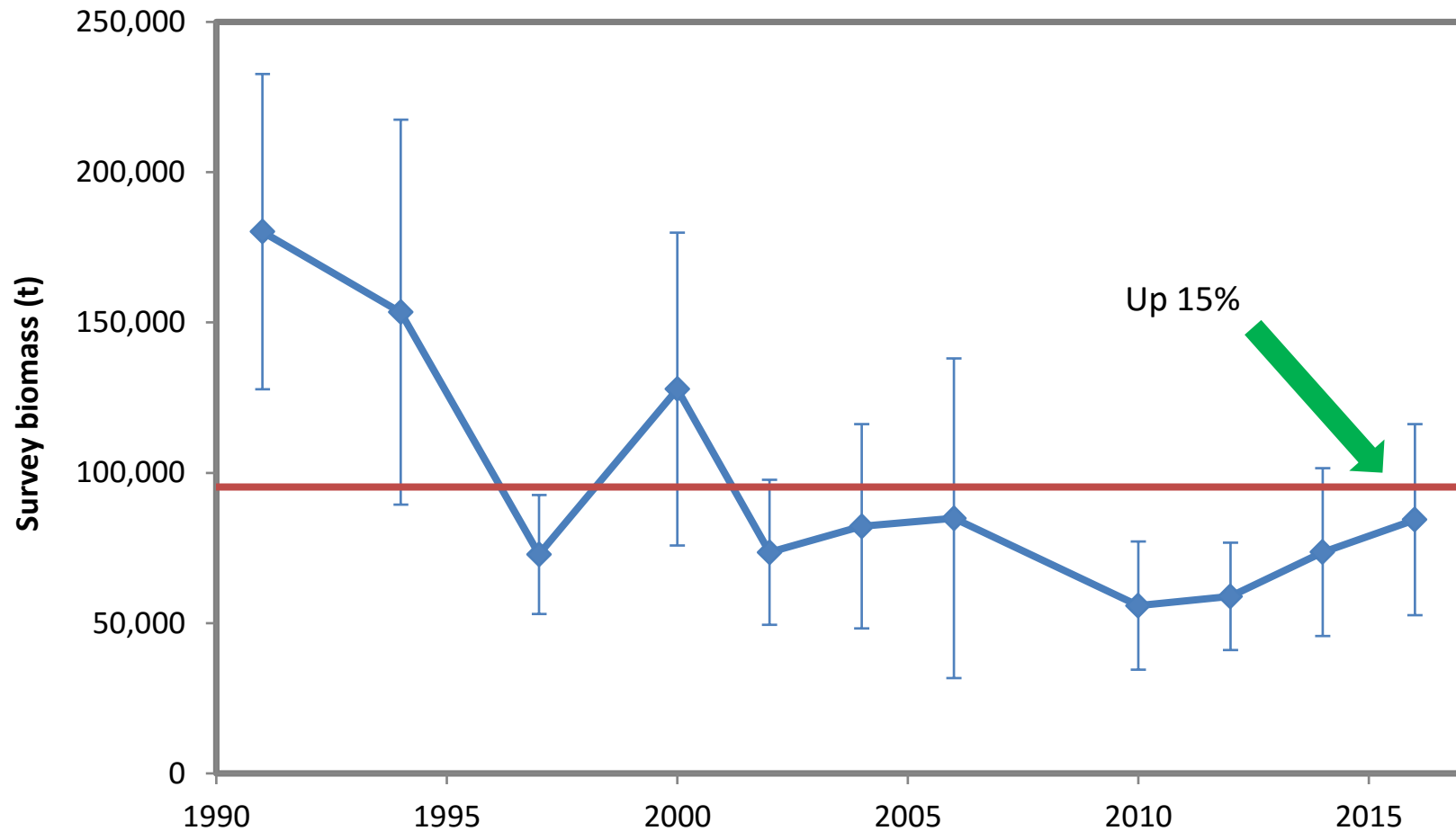
Catch history (2017 data are incomplete)



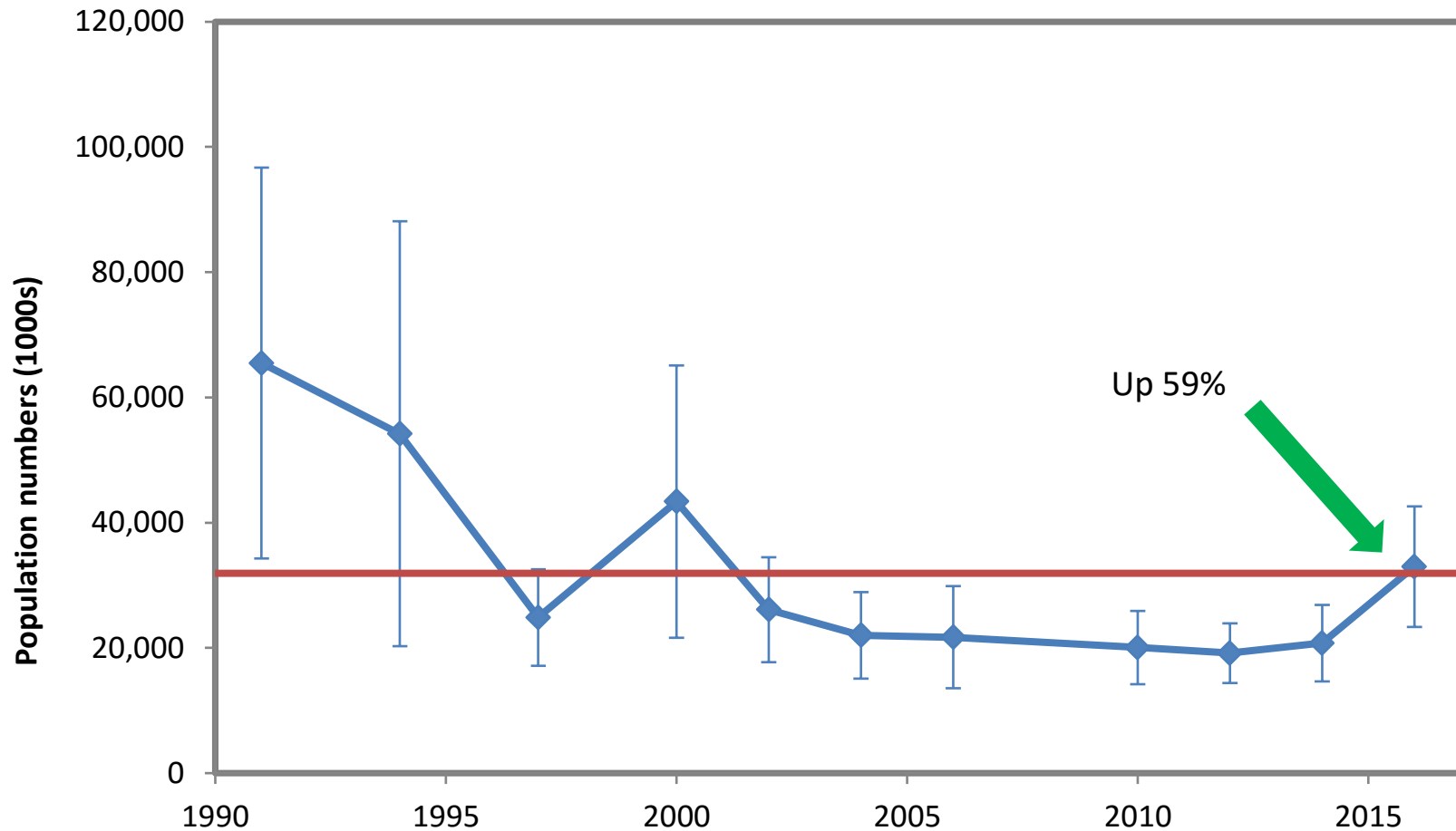
Fishery CPUE (2017 data are incomplete)



Survey biomass history (same as last year)

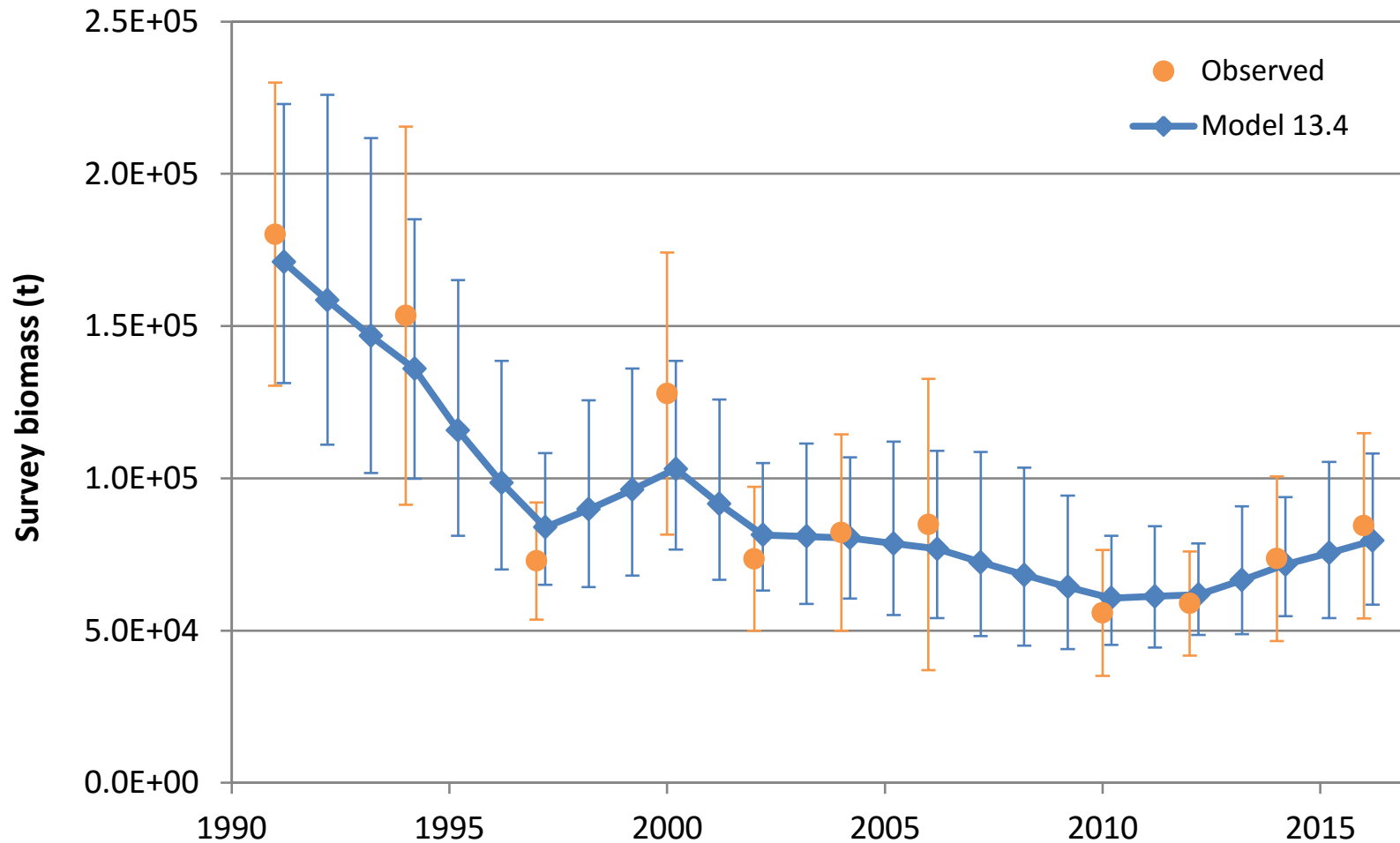


Survey numbers history (same as last year)



Results

Fit to survey biomass: figure



Fit to survey biomass: statistics

- Log-scale process error standard deviation: 0.17
 - With a CV of 0.37
- Root-mean-squared error: 0.103
 - Compare to average log-scale standard error (data): 0.182
- Mean normalized residual: 0.056
- Standard deviation of normalized residuals: 0.625
- Correlation (data:model): 0.975

Summary table

- Estimate of M updated based on EBS Model 17.2

Quantity	As estimated or <i>specified last year for:</i>		As estimated or <i>recommended this year for:</i>	
	2017	2018	2018	2019
M (natural mortality rate)	0.36	0.36	0.38	0.38
Tier	5	5	5	5
Biomass (t)	79,600	79,600	79,600	79,600
F_{OFL}	0.36	0.36	0.38	0.38
$maxF_{ABC}$	0.27	0.27	0.285	0.285
F_{ABC}	0.27	0.27	0.285	0.285
OFL (t)	28,700	28,700	30,200	30,200
maxABC (t)	21,500	21,500	22,700	22,700
ABC (t)	21,500	21,500	22,700	22,700
Status	As determined <i>last year for:</i>		As determined <i>this year for:</i>	
	2015	2016	2016	2017
Overfishing	No	n/a	No	n/a