



Standardized Bycatch Reporting Methodology (SBRM)

Initial Review/Final Action
February 2021
Sara Cleaver, NPFMC
Angela Forristall, AK Sea Grant Fellow



MSA requirements

p5-6

- MSA requires that **any FMP** establish a **standardized reporting methodology** to assess amount and type of bycatch occurring in the fishery

- MSA does **not** define standardized reporting methodology
- Final rule (2017) established national guidance for compliance
- Councils must review FMPs and make any necessary changes so all FMPs are consistent with the national guidance by Feb 21, 2022.



National Guidance ([Final Rule 82 FR 6317](#))

SBRM = “an established, consistent procedure or procedures used to collect, record, and report bycatch data in a fishery”
(p5)

- ex: Observer Program, industry reports (fish tickets)



Bycatch definition 16 USC § 1802(2), p7

Fish that are harvested in a fishery, but that are not sold or kept for personal use.

Includes: Bycatch includes the discard of whole fish at sea or elsewhere, including economic discards and regulatory discards, and fishing mortality due to an encounter with fishing gear that does not result in capture of fish (i.e., unobserved fishing mortality).

Excludes:

- Fish that are legally retained and kept for personal, tribal, or cultural use, or that enter commerce through sale, barter, or trade.
- Fish released alive under a recreational catch-and-release fishery management program.
- Fish harvested in a commercial fishery that are tagged and released alive under a scientific tagging and release program established by the Secretary.



National Guidance

([Final Rule 82 FR 6317](#))

page 5

- any FMP must **identify** these [SBRM] procedures and **explain how** the procedure meets the purpose to collect, record, and report bycatch data, based on **4 considerations**:
 - 1) Characteristics of bycatch in the fishery
 - 2) Feasibility of the methodology
 - 3) Uncertainty of the data
 - 4) How the data will be used to assess the amount and type of bycatch



Standardized Bycatch REPORTING Methodology

- SBRM: About **documenting** how we **report bycatch**
- Different from methods used to *assess* bycatch and the development of measures to minimize bycatch or bycatch mortality.
 - **Bycatch assessment is not part of SBRM.**

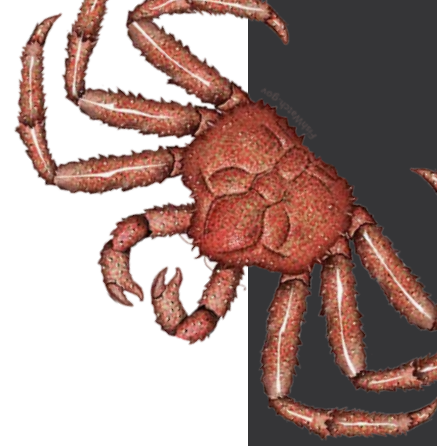


History of Action, p6

- Feb 2020: Council received a report on FMPs and current consistency with final rule
 - The Council determined that BSAI/GOA Groundfish and Arctic FMPs were consistent with Final Rule
- BSAI crab, scallop, and salmon needed further analysis
 - Feb 2021: analysis for these 3 FMPs
- In this presentation, highlighting primary SBRMs, noting that the document goes into more detail on secondary data collection



Crab FMP, p7-9



- Crab Observer Program
 - 100% coverage on CPs, 20-100% on CVs

Characteristics of bycatch

- predominantly sublegal crab, female crab, non-target crab species, some groundfish

Feasibility of SBRM

- Observer coverage levels help avoid unnecessary oversampling, limits crew burden
- Funding portfolio for observers
- Crab Oversight Task Force

Data uncertainty

- Observed trips extrapolated to unobserved trips
- Amendments to observer program to address uncertainty

Data use

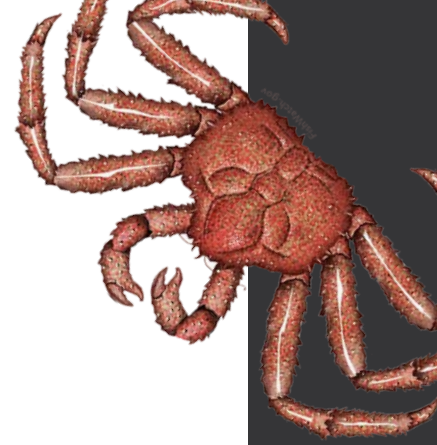
- Estimating the total amount of bycatch in the fisheries
- Estimating total fishing mortality



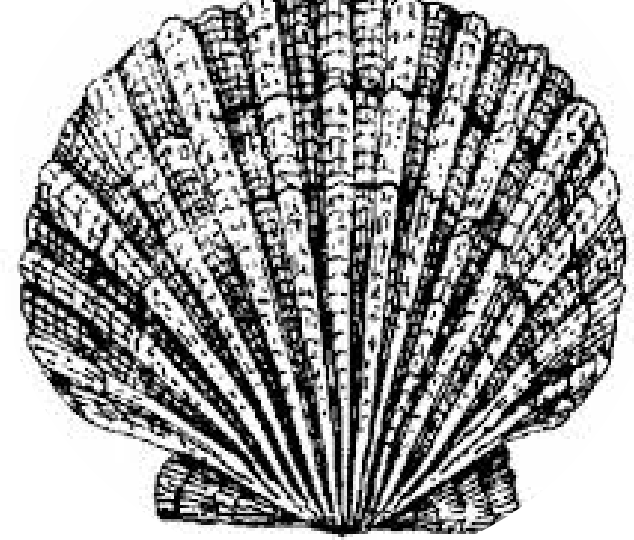
Crab FMP, p7-9

- Crab Observer Program
 - 100% coverage on CPs, 20-100% on CVs
- Federal logbook- vessel operators must include at-sea discards of groundfish, herring, halibut, salmon, king and Tanner crab
 - Primarily used by OLE and ADFG for catch and effort data
- ADFG Fish tickets- Fishermen are not required to report any at-sea discards for any species on their fish tickets, but may do so voluntarily.

Recommendation, p9: amend FMP to explicitly identify the SBRM.



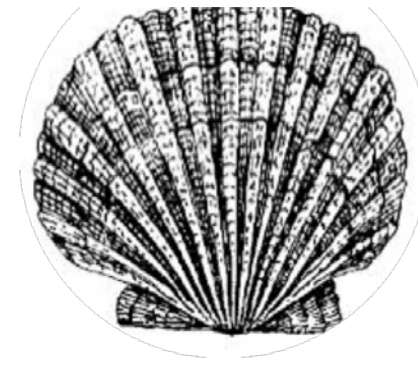
Scallop FMP, p9-12



- Scallop Observer Program
 - 100% observer coverage is required in all areas except the Cook Inlet Area.
- ADFG logbook- report crab bycatch
- Discards not required on fish tickets, but may be voluntarily reported.



Scallop FMP, p9-12



Characteristics of bycatch

- Primary concerns are crab species and halibut
- Scallops predominate catches

Feasibility of SBRM

- Observer coverage is scaled depending on potential bycatch concerns
- Cook Inlet Area, partial coverage with ADFG staff as observers

Data uncertainty

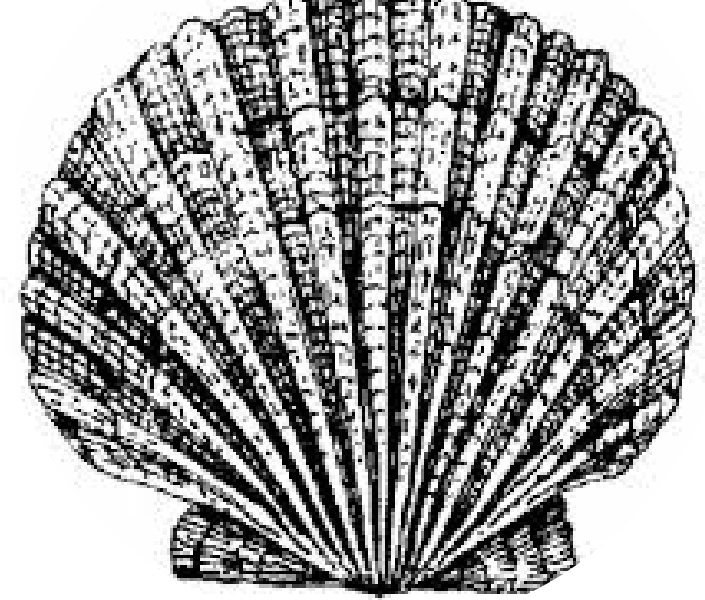
- 100% coverage, estimates of uncertainty
- Smaller allowable dredge size in Cook Inlet Area
- Comparison of logbook entries to observer data in Cook Inlet Area

Data use

- Data relayed inseason to ADF&G and the scallop industry in order to avoid areas of high crab bycatch
- Bycatch data included in SAFE documents



Scallop FMP, p9-12

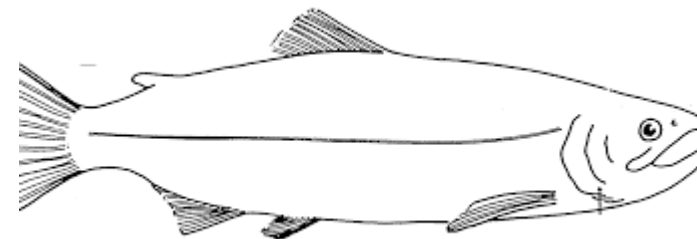


- Scallop Observer Program
 - 100% observer coverage is required in all areas except the Cook Inlet Area.
- ADFG logbook- report crab bycatch
- Discards not required on fish tickets, but may be voluntarily reported.

Recommendation, p13: amend FMP to explicitly identify the SBRM.



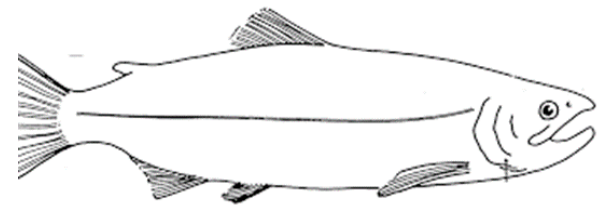
Salmon FMP, p12-16



- East Area
 - Sport fishery- mostly in state waters
 - Statewide harvest survey
 - Creel survey
 - Saltwater Guide Logbooks
 - Commercial Troll fishery
- West Area
 - No federally managed commercial salmon fishery is currently occurring nor would occur if Council's Dec 2020 amendment is approved by NMFS. No SBRM required at this time.



Salmon FMP (East Area Troll), p13-16



Characteristics of bycatch

- primarily groundfish and other salmon
- At-sea discards and bycatch concerns are low due to the selectivity of gear, seasonality, and closed areas

Feasibility of SBRM

- Fish tickets may be used voluntarily to report discards.
- Low bycatch, additional costs and operational burden

Data uncertainty

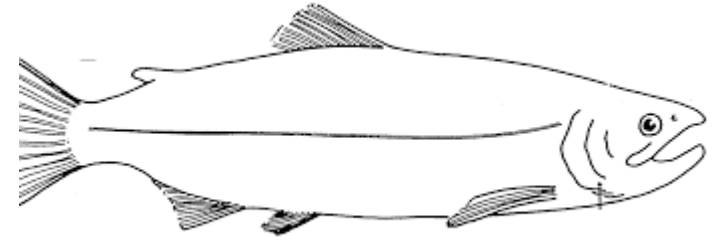
- Unreported discards
- Uncertainty in data noted by State
- Low volume of fishery

Data use

- Unreported harvest and discard-at-sea mortality is not estimated (apart from Chinook salmon) but is thought to be low.



Salmon FMP



- East Area
 - Sport fishery- mostly in state waters
 - Statewide harvest survey
 - Creel survey
 - Saltwater Guide Logbooks
 - Commercial Troll fishery

**Recommendation, p16: amend FMP to explicitly identify the SBRM.
No additional reporting requirements recommended.**



Questions?

Sara Cleaver

Sara.cleaver@noaa.gov

907-271-2809

Angela Forristall

armoran3@alaska.edu

