

Appendix I3: Fits to Fisheries Size Composition Data for the "18" Scenarios

William Stockhausen

31 August, 2018

Fits to fishery retained catch and total catch size composition data available to the model(s) are presented in this section. Included are plots of mean fits to size compositions, Pearson's residuals as bubble plots, and effective sample sizes. Not all of the fits presented are necessarily included in the parameter optimization for each model; some fits to datasets for a particular model may be included for comparison purposes with other models which include those data in their optimization. The reader should consult the main assessment document to determine which fits are included in the optimization for any particular model.

Retained catch mean size compositions

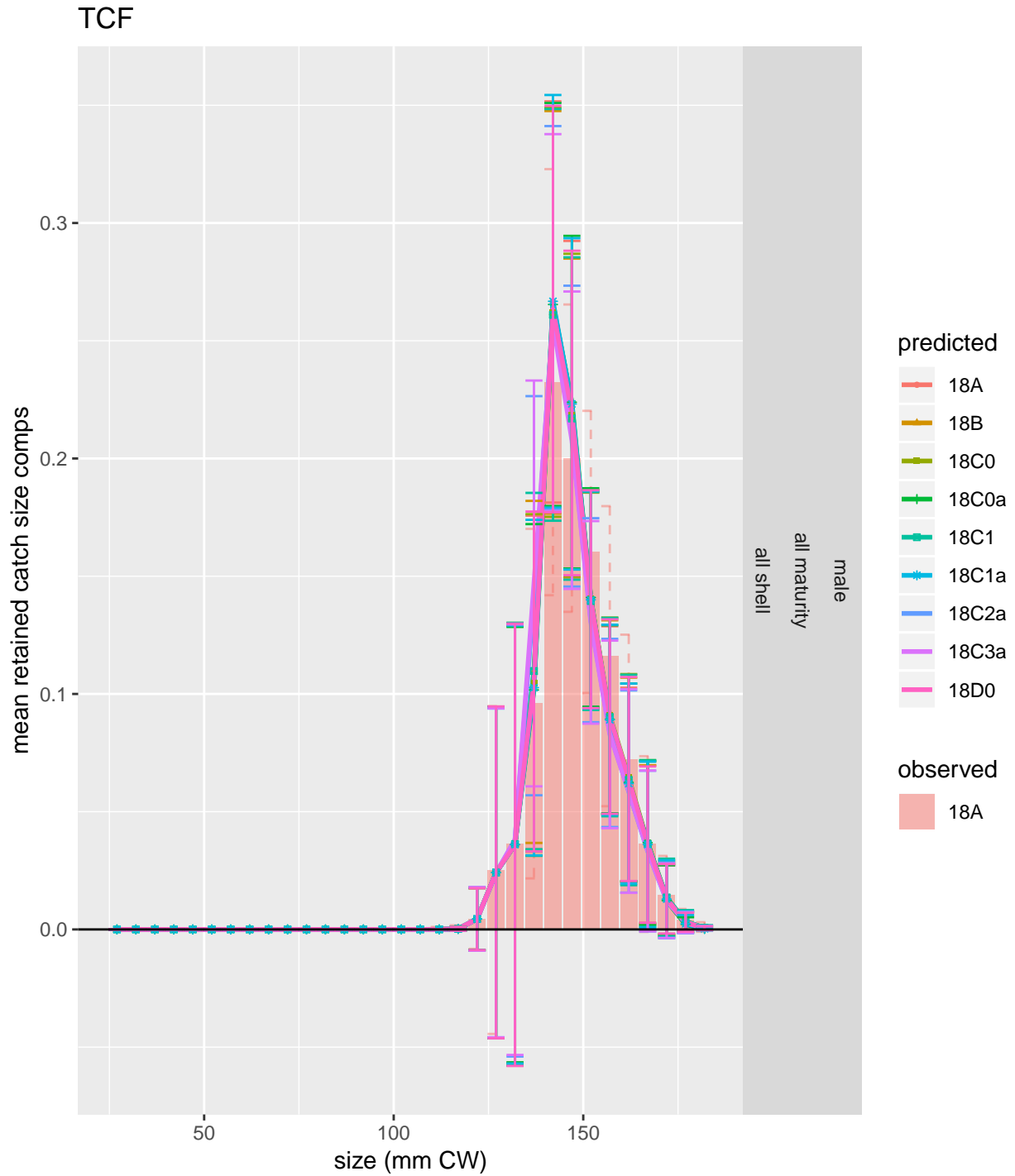


Figure 1: Comparison of observed and predicted mean retained catch size comps for TCF.

Total catch mean size compositions

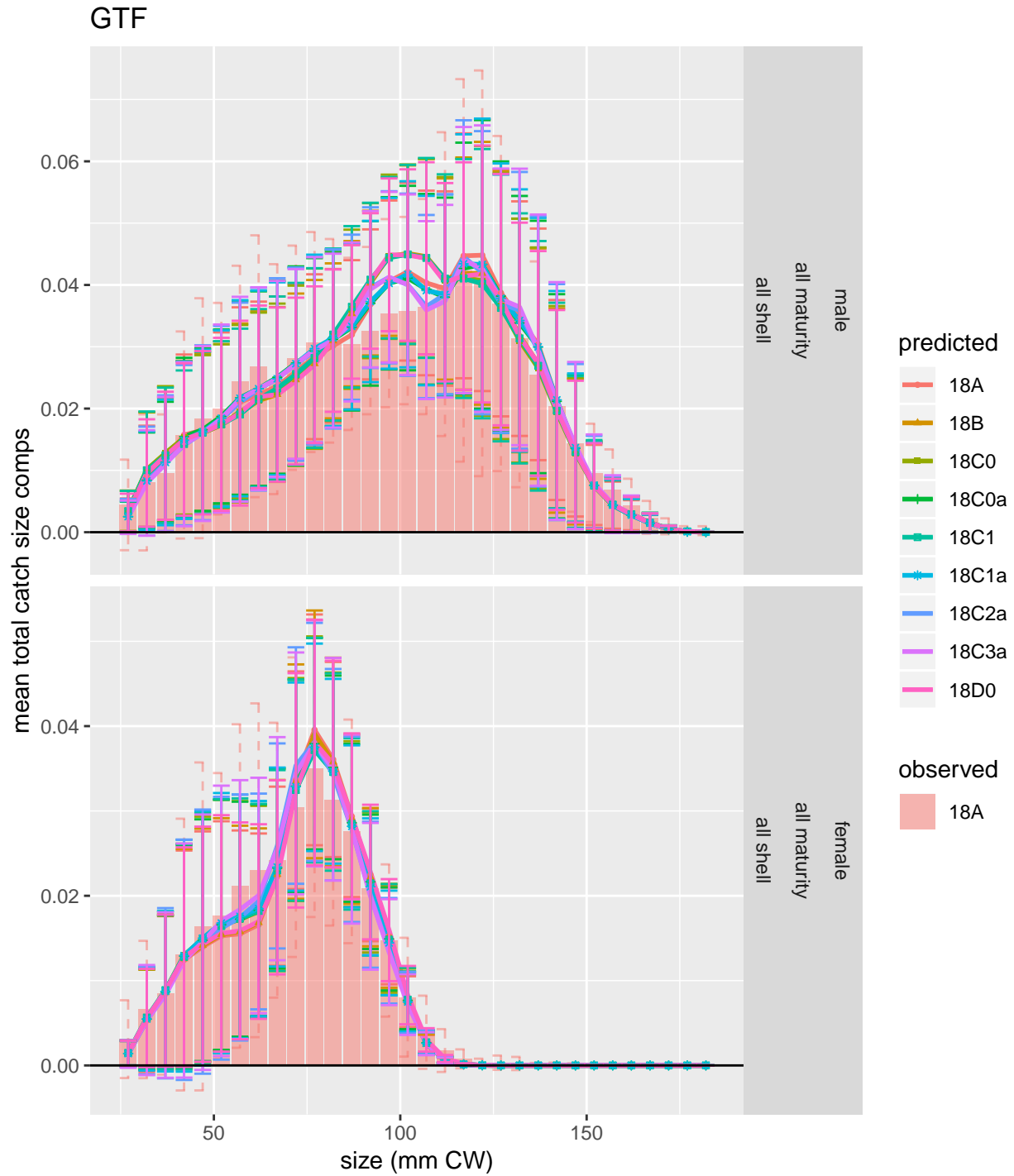


Figure 2: Comparison of observed and predicted mean total catch size comps for GTF.

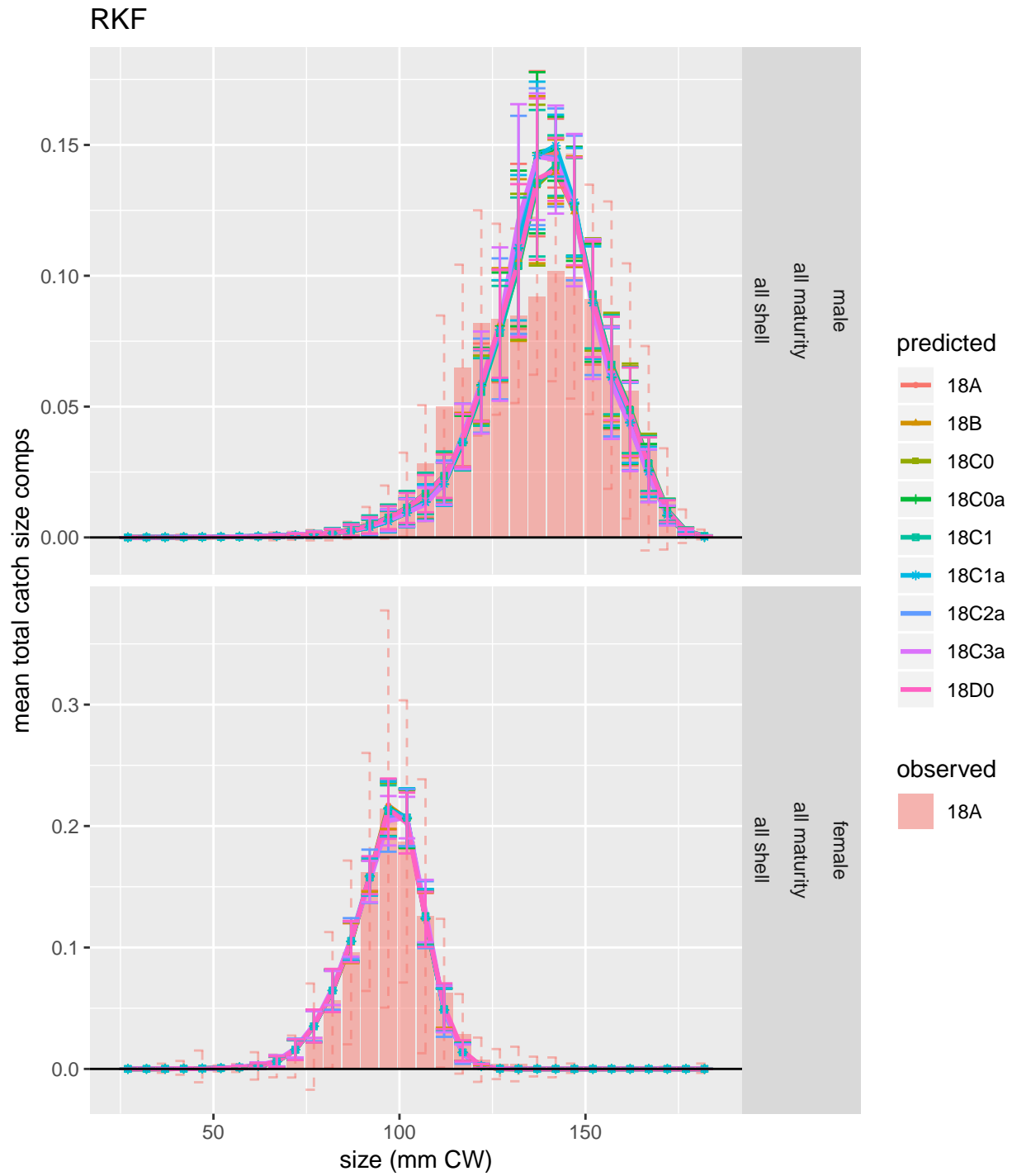


Figure 3: Comparison of observed and predicted mean total catch size comps for RKF.

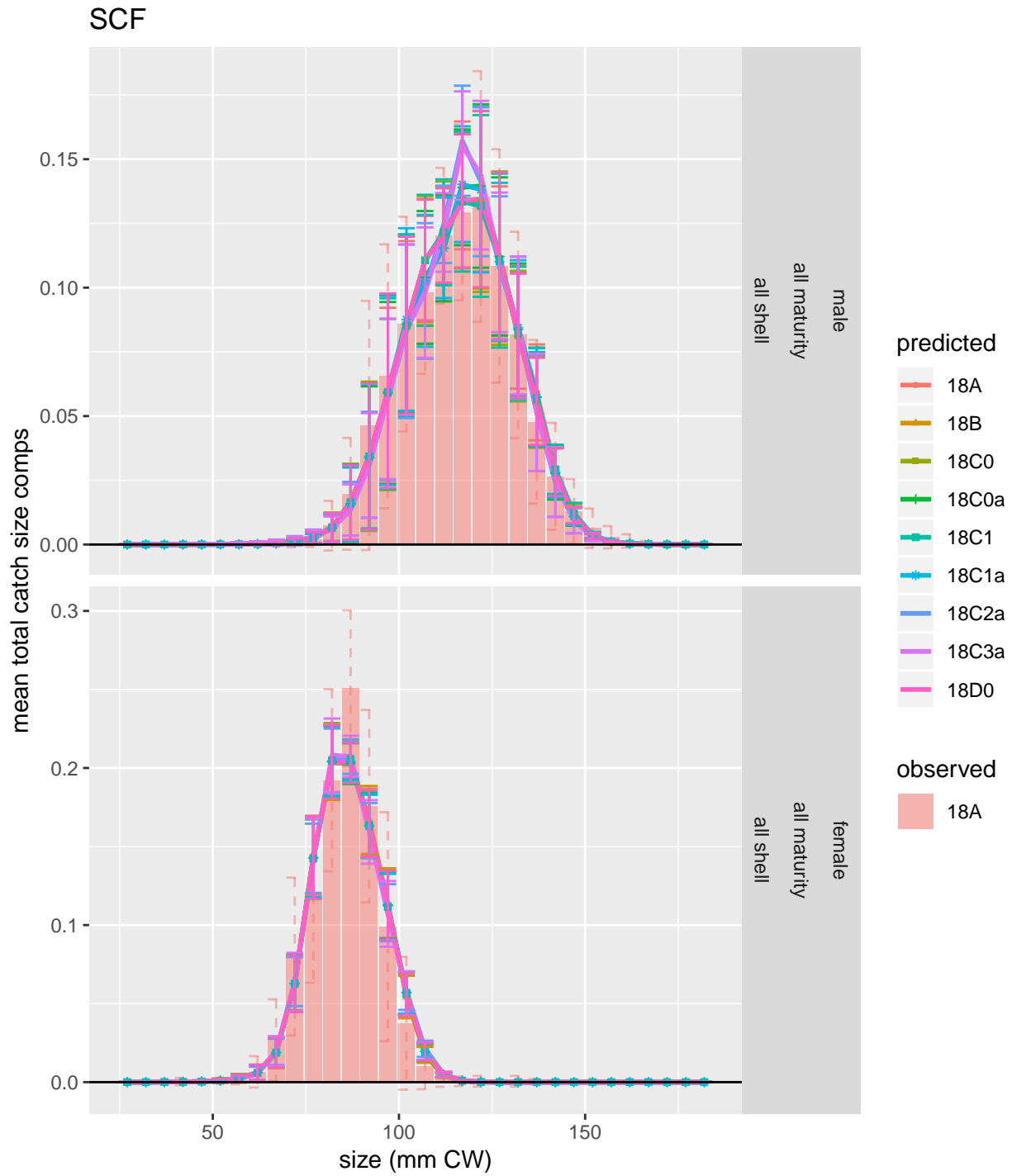


Figure 4: Comparison of observed and predicted mean total catch size comps for SCF.

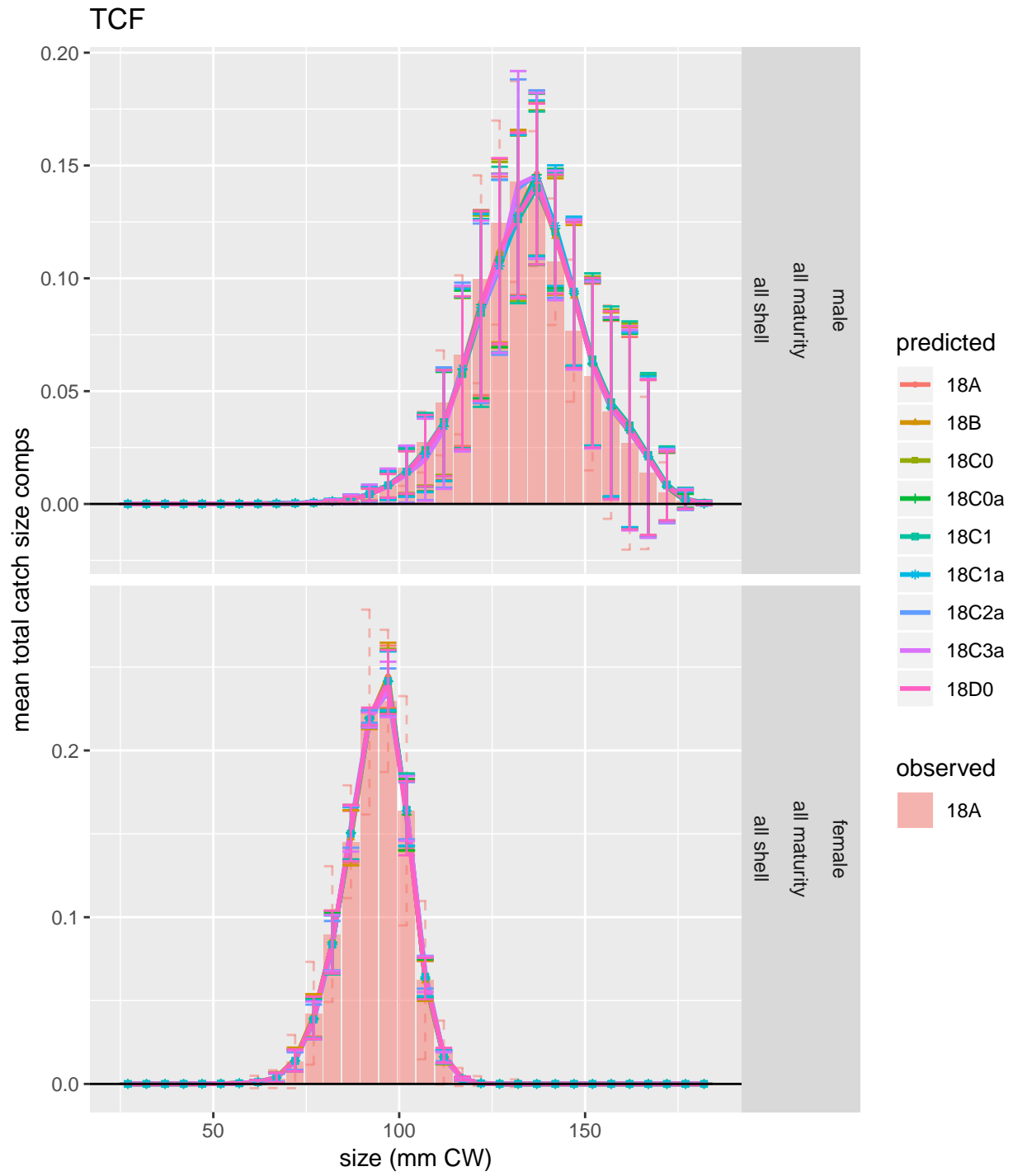


Figure 5: Comparison of observed and predicted mean total catch size comps for TCF.

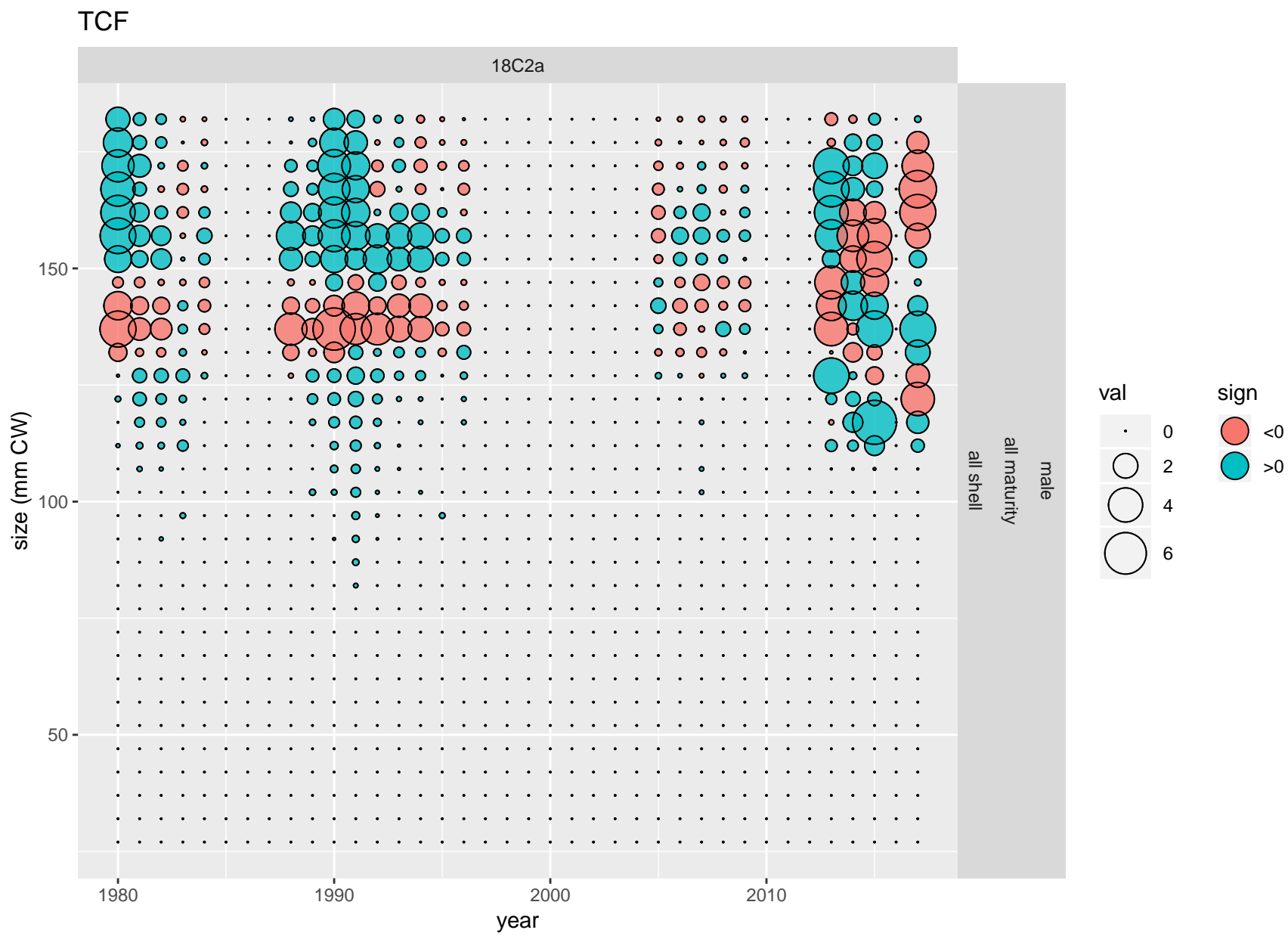


Figure 6: Pearson's residuals for proportions-at-size from the TCF for scenario 18C2a.



Figure 7: Pearson's residuals for proportions-at-size from the TCF for scenario 18C2a.

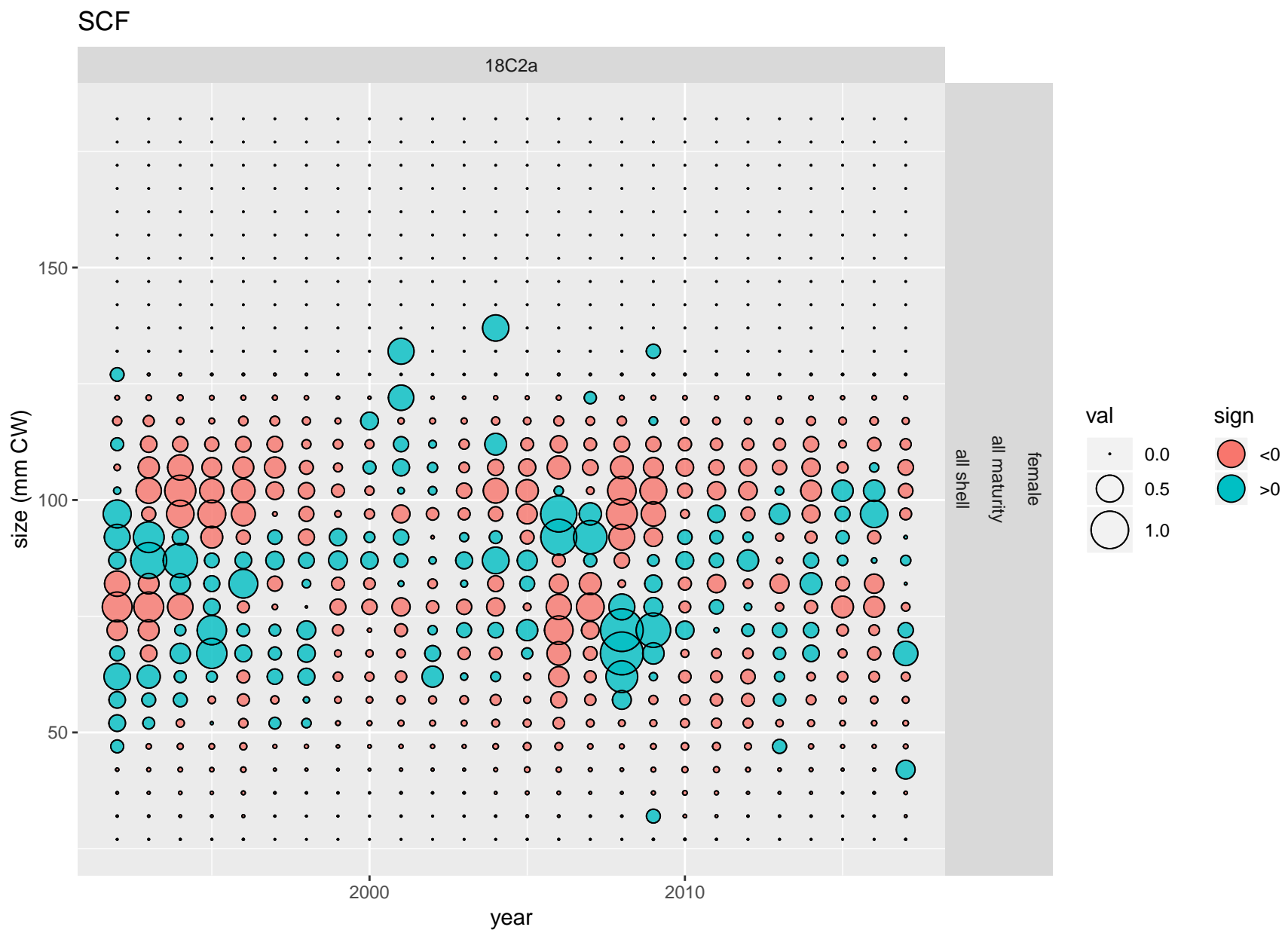


Figure 8: Pearson's residuals for proportions-at-size from the SCF for scenario 18C2a.

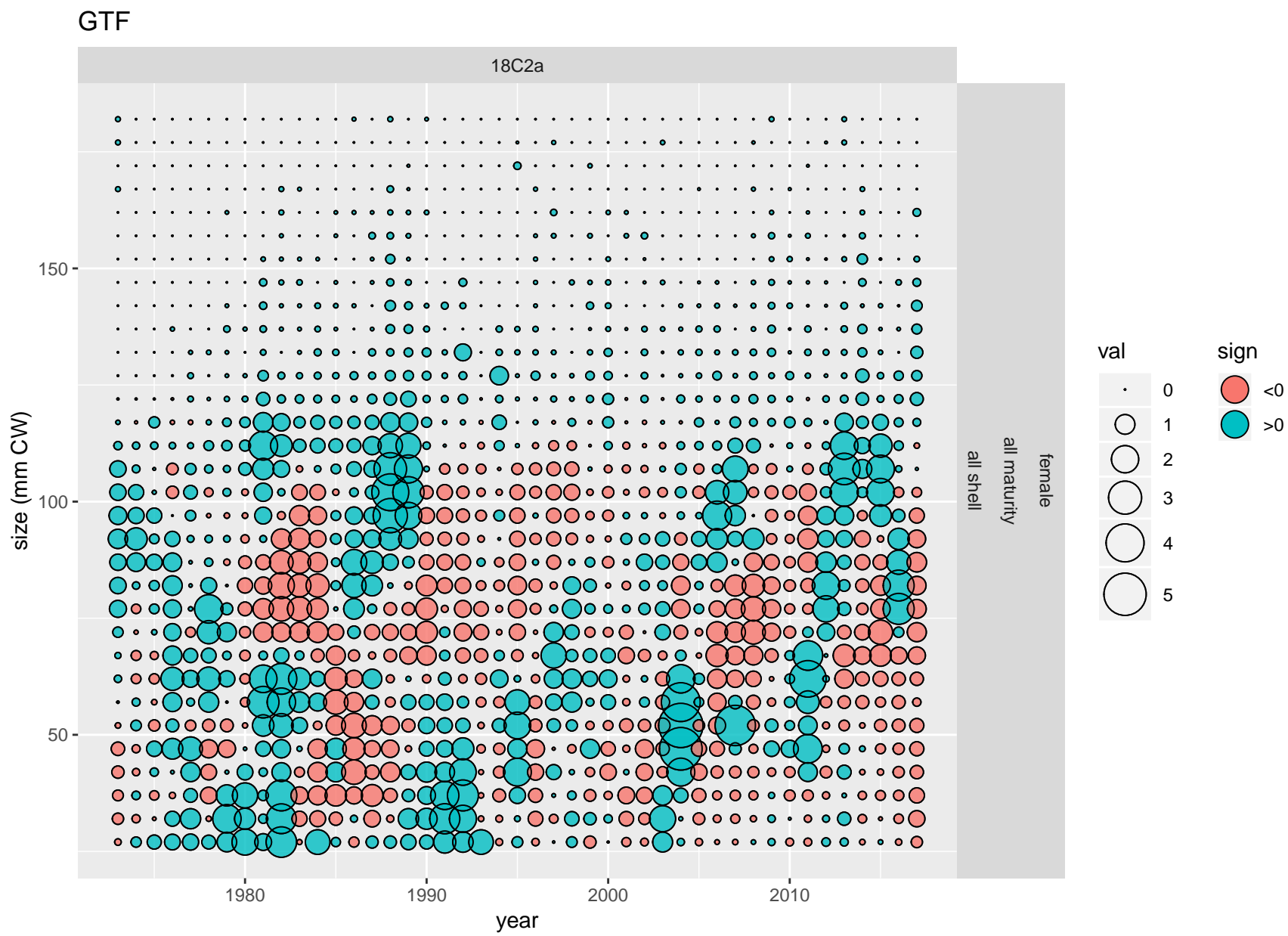


Figure 9: Pearson's residuals for proportions-at-size from the GTF for scenario 18C2a.

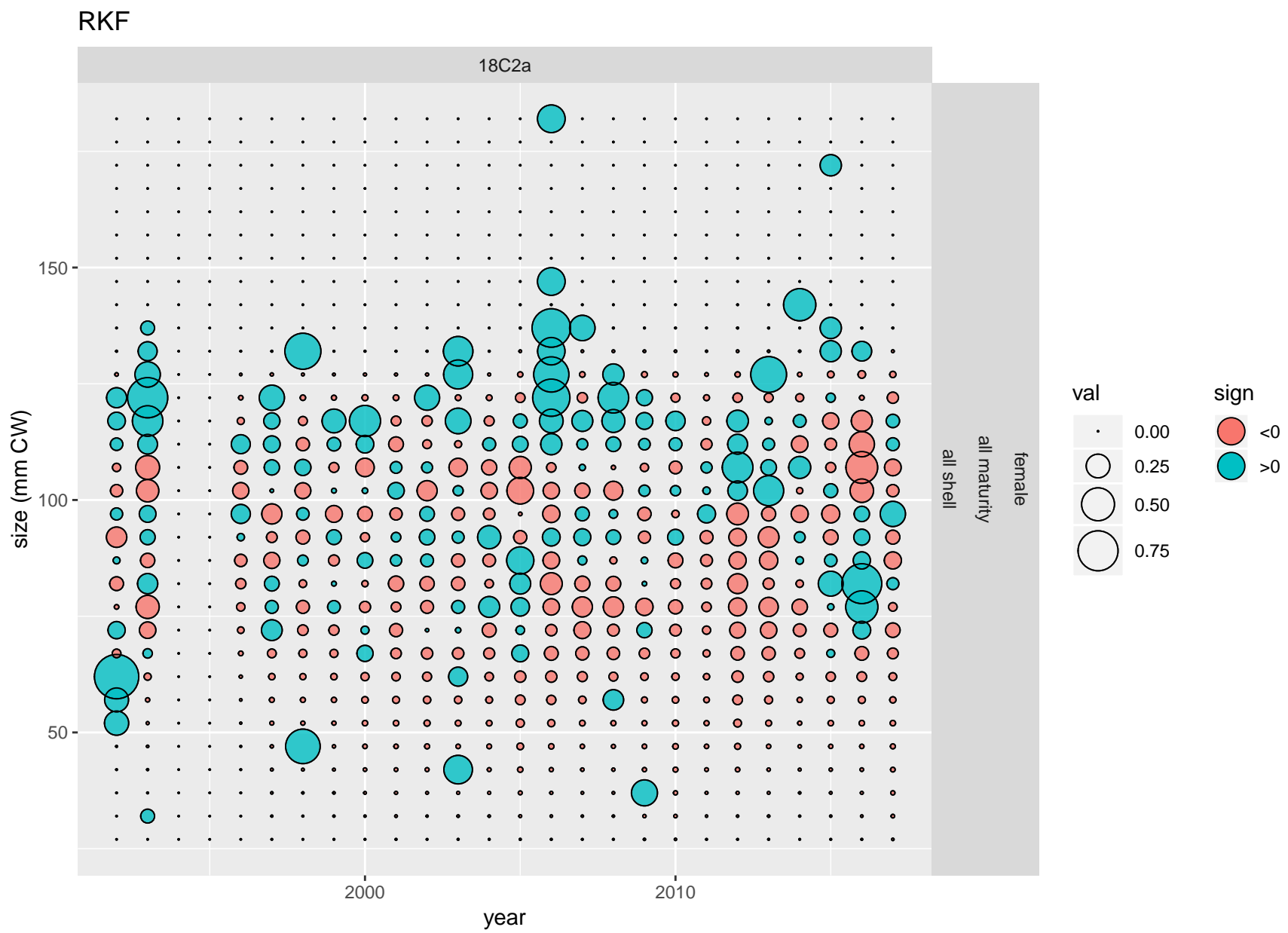


Figure 10: Pearson's residuals for proportions-at-size from the RKF for scenario 18C2a.

Effective Ns for total catch size compositions

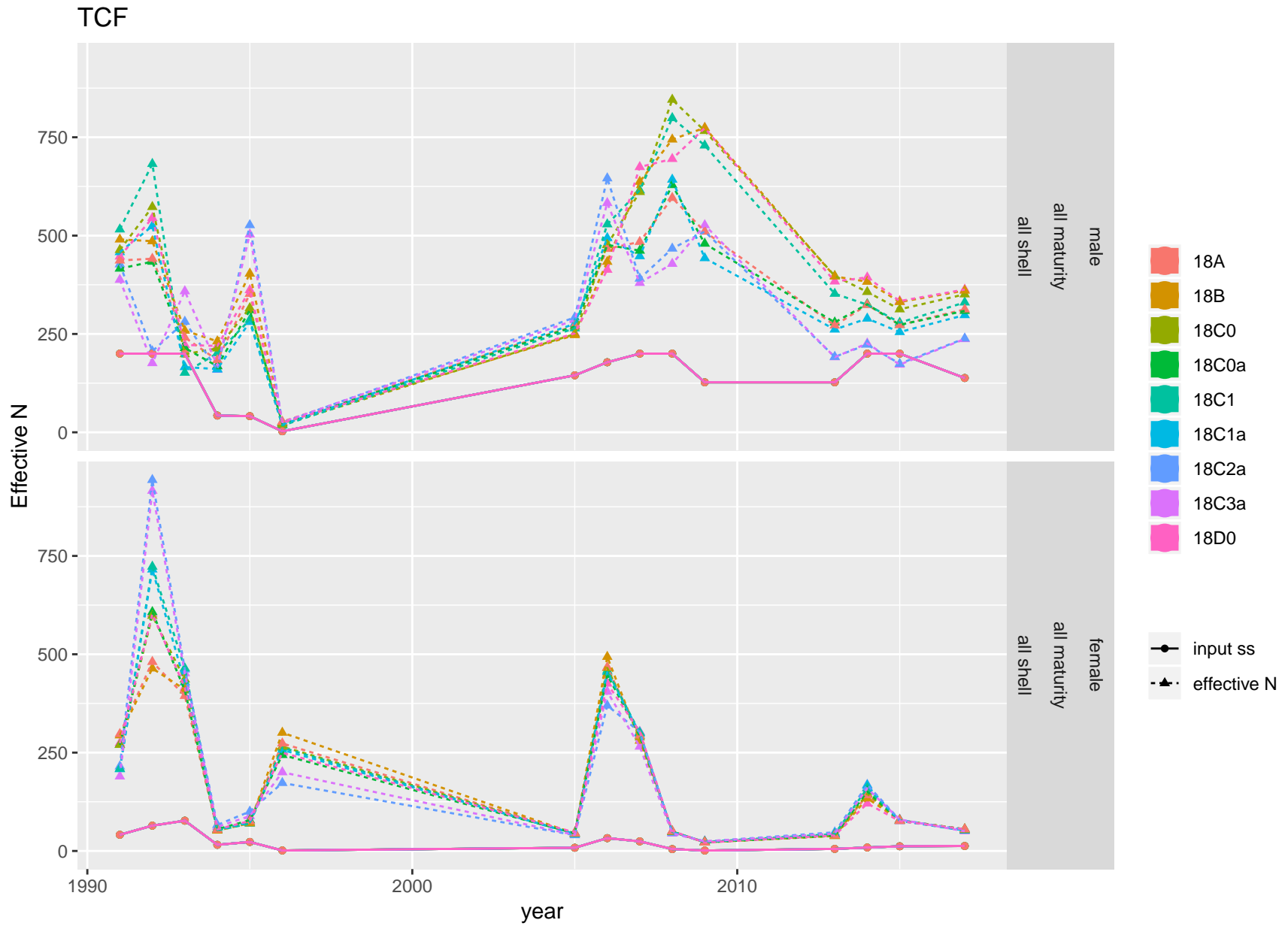


Figure 11: Input and effective sample sizes from total catch size compositions from the TCF fishery.

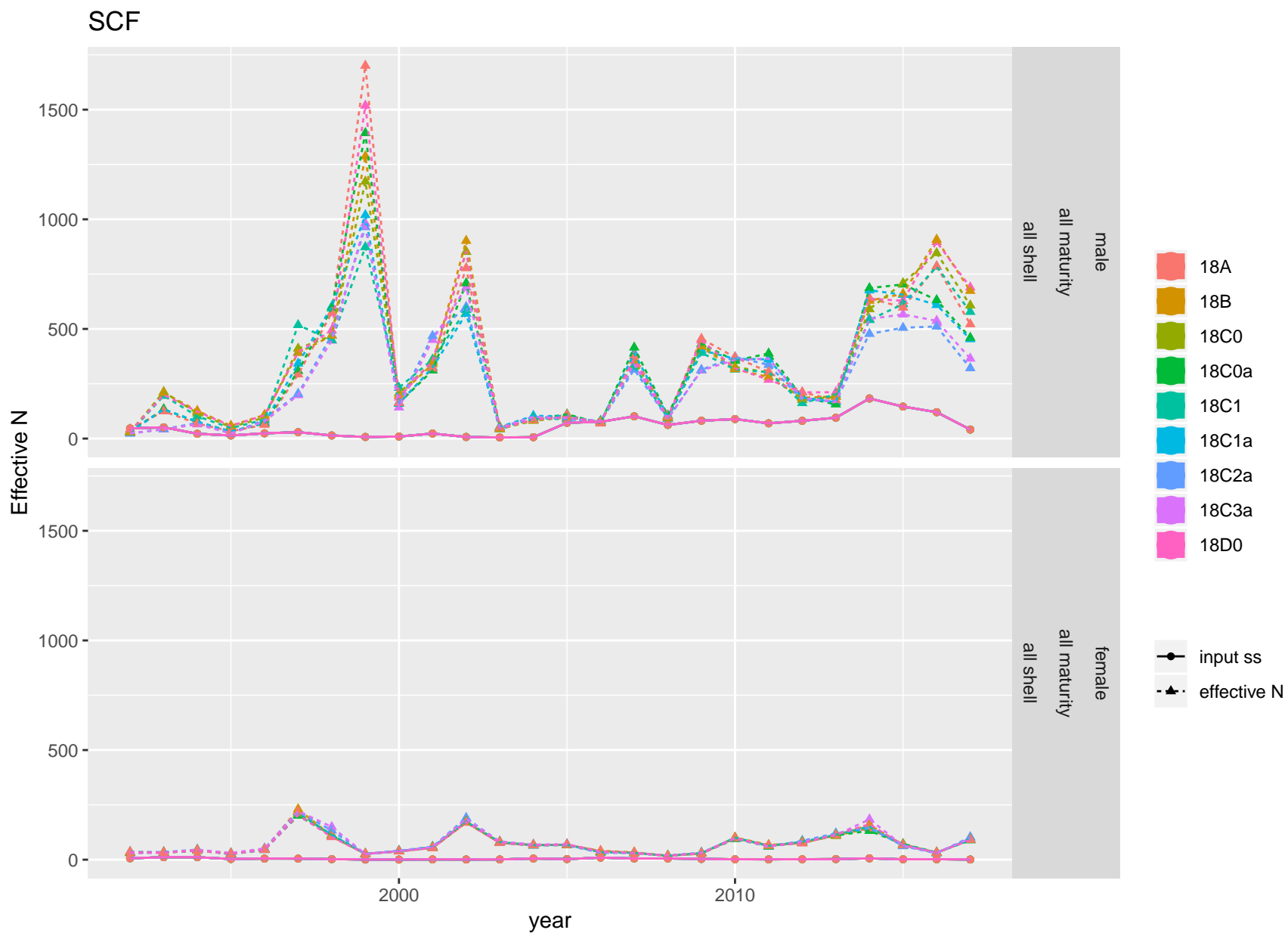


Figure 12: Input and effective sample sizes from total catch size compositions from the SCF fishery.

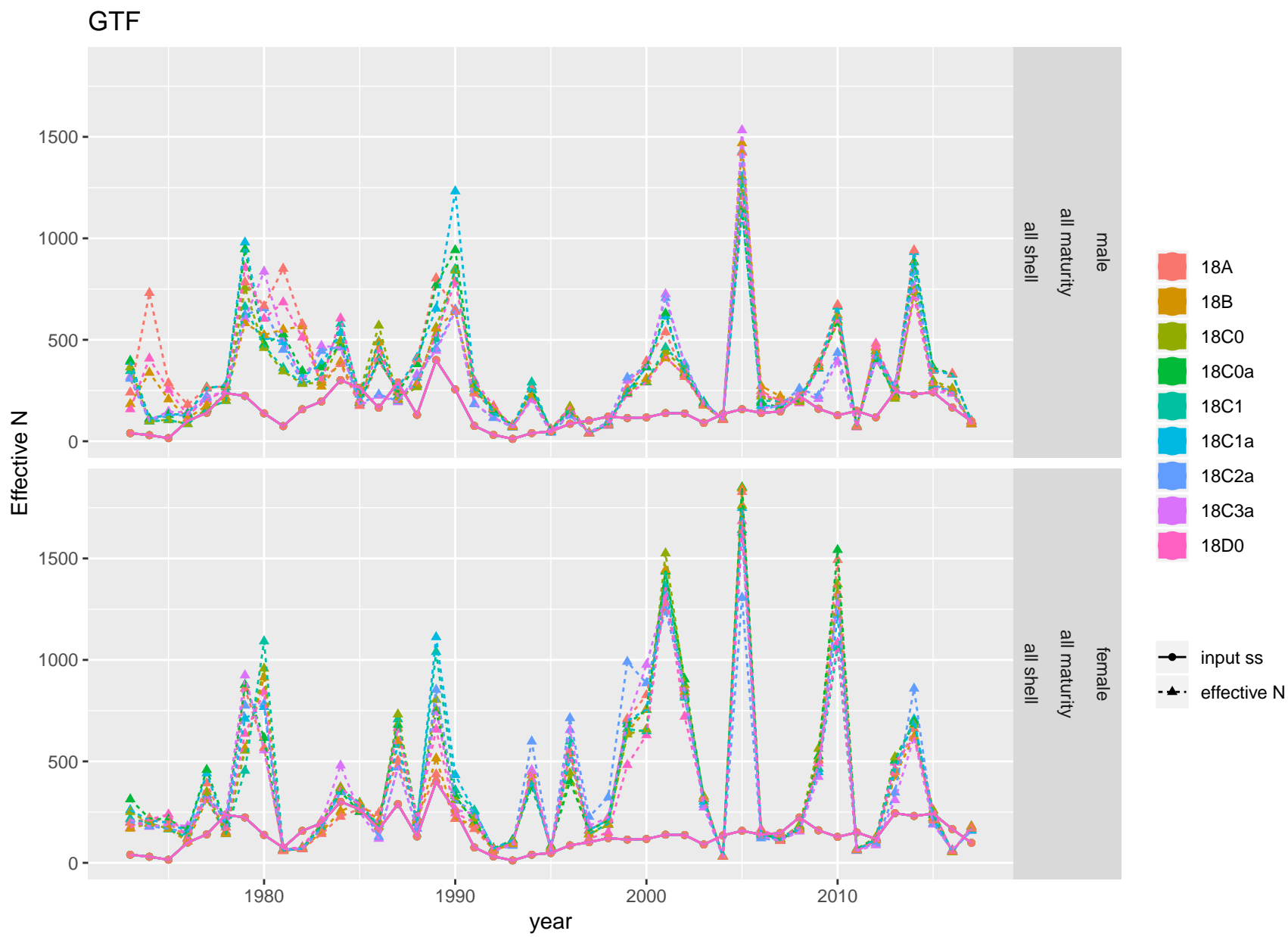


Figure 13: Input and effective sample sizes from total catch size compositions from the GTF fishery.

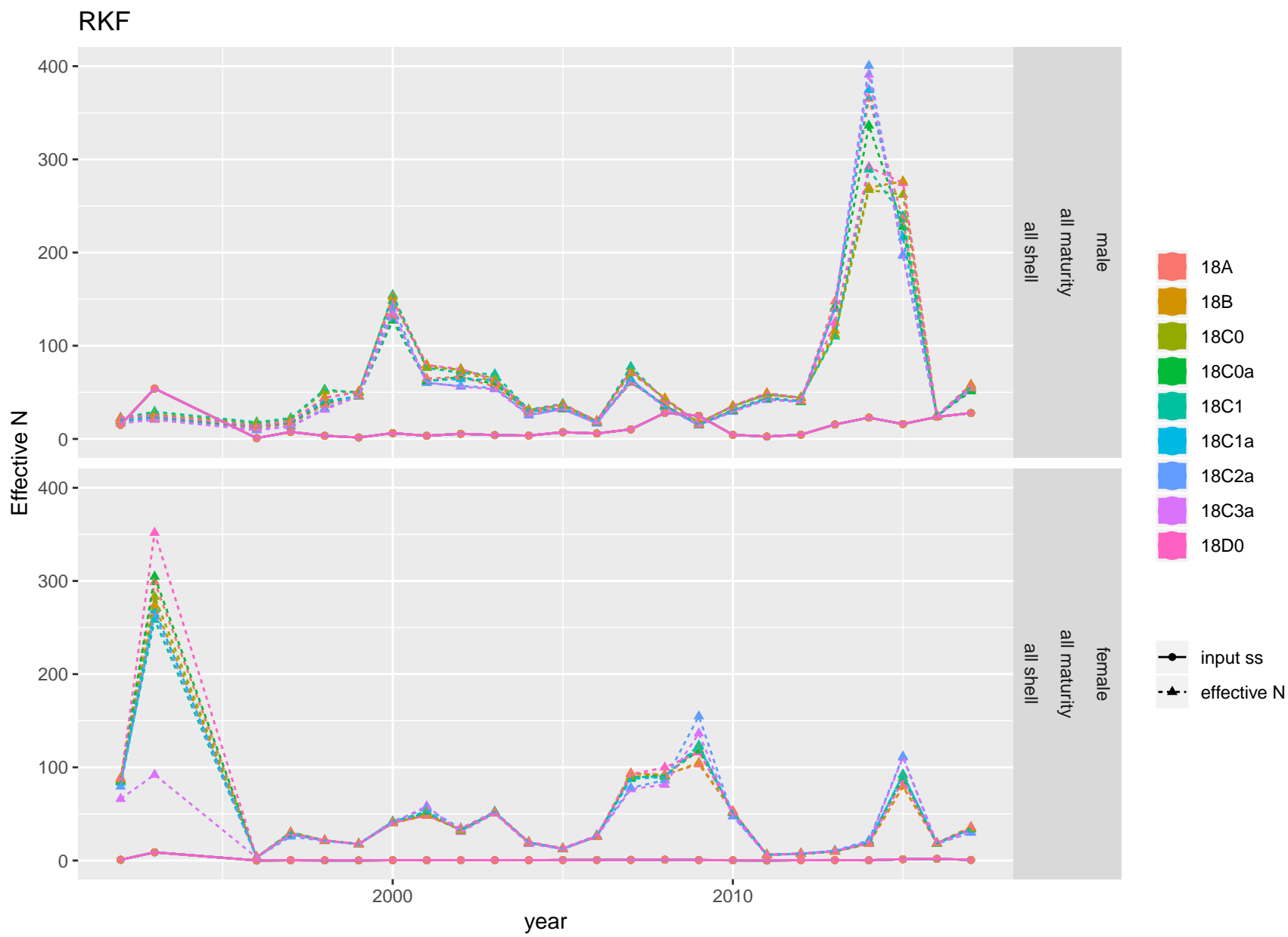


Figure 14: Input and effective sample sizes from total catch size compositions from the RKF fishery.