

# 17<sup>th</sup> COAST GUARD DISTRICT ENFORCEMENT REPORT



**June - September 2016**

*Prepared By: LCDR Corrie Sergent  
Response and Enforcement Branch  
Coast Guard District  
P.O. Box 25517  
Juneau, AK 99802-5517*

| <b>Table of Contents</b>  | <b>Page</b> |
|---|-------------|
| I. High Seas Drift Net Enforcement .....                          | 3           |
| II. US/Russian Maritime Boundary Line (MBL) Enforcement .....     | 3           |
| III. US/Canadian EEZ Boundary (Dixon Entrance) Enforcement .....  | 3           |
| IV. Steller Sea Lions and Critical Habitat Enforcement .....      | 3           |
| IV. Commercial Fishing Vessel Boarding Statistics .....           | 4           |
| V. Halibut and Sablefish Enforcement.....                         | 4           |
| VI. Commercial Fishing Vessel Safety/Search and Rescue Cases..... | 5           |
| VII. Coast Guard Resource Summary .....                           | 5-6         |

### **Appendices**

|  |       |
|--|-------|
| Appendix A June - September 2016 Search and Rescue Cases.....                        | 7-12  |
| Appendix B June - September 2016 Federal Fisheries Boardings without Violations..... | 13-26 |
| Appendix C June - September 2016 Federal Fisheries Boardings with Violations.....    | 27-31 |

### **Figures**

|                                       |   |
|---------------------------------------|---|
| 1. Fisheries Boardings By Year.....   | 4 |
| 2. Fisheries Violations By Year ..... | 4 |
| 3. Safety Statistics .....            | 5 |
| 4. Annual HC-130 Flight Hours.....    | 5 |
| 5. Annual Major Cutter Days .....     | 5 |
| 6. JUN-SEP HC-130 Hours.....          | 6 |
| 7. JUN-SEP Major Cutter Days .....    | 6 |

### **List of Abbreviations**

|  |                                      |
|--|--------------------------------------|
| CFVS – Commercial Fishing Vessel Safety    | HSDN – High Seas Drift Net           |
| FBS - Russian Federal Border Service       | MBL – US/Russian Maritime Boundary   |
| FF/V – Foreign Fishing Vessel              | NPSC – North Pacific SAR Coordinator |
| GOA – Gulf of Alaska                       | SAR – Search and Rescue              |
| HC-130 – USCG Fixed-Wing Aircraft          | UMIB –Urgent Marine Info Broadcast   |
| HEC/MEC – High/Medium Endurance Cutters    | WLB –225ft Buoy Tender               |
| HH65/60 – CG helicopter                    | WPB – 110ft Patrol Boat              |
| MARB – Marine Assistance Request Broadcast | POB – Persons on board               |
| CGC – Coast Guard Cutter                   | IVO – In the vicinity of             |
| SMC – SAR Mission Coordinator              | MEDEVAC – Medical Evacuation         |
| NVG – Night Vision Goggles                 | AVDET – Aviation Detachment          |
| FOL – Forward Operating Location           |                                      |

## **I. High Seas Drift Net (HSDN) Enforcement**

USCGC MELLON began patrolling the North Pacific Anadromous Fish Commission (NPAFC) Convention Area on 16 May completing her patrol on 14 August. The intent of the patrol was to detect and deter illegal, unreported, and unregulated (IUU) fishing activity on the high seas in cooperation with North Pacific nations. CGC MELLON identified 826 foreign fishing and support vessels operating on the high seas of the North Pacific during their patrol of the NPAFC Convention Area. CGC MELLON conducted three Western and Central Pacific Fisheries Commission (WCPFC) boardings in July, on two Taiwan registered and one Japan registered fishing vessel. Two of the vessels were found to be in compliance with WCPFC conservation and management measures (CMM). One vessel had two violations; one serious violation of CMM 2006-08 – Boarding and Inspection Procedures and one of CMM 2013-05 - Daily Catch and Effort Reporting. F/V QUAN SHEN FA failed to maintain sufficient records of catch related data in accordance with the Commission’s reporting requirements and vessel failed to maintain written or electronic log of catch and effort while fishing with a longline. Taiwan fisheries authorities were notified and the vessel’s fishing license was suspended for two months as a result.

In support of CGC MELLON, a Coast Guard HC-130 conducted two deployments staged out of the U.S. air bases in Masawa and Yokota Japan. A total of 264 high seas driftnet (HSDN) surveillance hours were flown, sighting 434 vessels operating on the high seas of the North Pacific. No suspected HSDN vessels were detected by these flights. In addition, a Canadian CP-140 aircraft deployed to Hakodate, Japan from 05-24 June and conducted 11 aerial missions. No suspected IUU or HSDN activity was detected during these flights either.

## **II. U.S./Russian Maritime Boundary Line (MBL) Enforcement**

Activity along the MBL was moderate over the reporting period with an average of 9 vessels detected within 20 miles of the MBL daily. The flag states of these foreign fishing vessels (FFVs) included Russia, Korea, and China. In addition to regular surveillance, there were Coast Guard surface and aerial patrols of the MBL during this period. There have been no detected incursions by FFVs into the U.S. EEZ this season.

## **III. U.S./Canadian EEZ Boundary (Dixon Entrance) Enforcement**

There was light fishing activity during the reporting period along the U.S.-Canadian EEZ boundary in vicinity of Dixon Entrance. There were Coast Guard surface and aerial patrols of the border area during this period. All Canadian fishing vessels sighted were south of the A-B line and no incursions into U.S. waters were detected.

## **IV. Marine Protected Resources and Critical Habitat Enforcement**

The Coast Guard monitors more than 151 critical habitat areas around Alaska each month as part of routine cutter and aircraft patrol activity. From June to September, the U.S. Coast Guard supported NOAA Office of Law Enforcement (OLE) and Office of Protected Resources marine mammal mortality investigations in the Copper River delta and in Southeast Alaska. A MH-60 helicopter conducted five flights in June and July to assist Marine Mammal Stranding Network

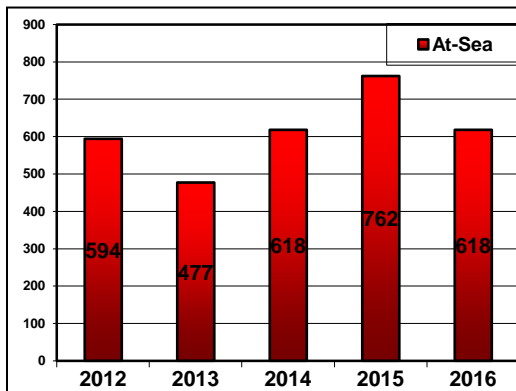
biologists in conducting surveys of marine mammal carcasses. In addition, a forward deployed Coast Guard MH-60 in Kotzebue conducted five flights in August and September to assist Alaska Eskimo Walrus Commission biologists in surveying the Seward peninsula for marine mammals.

During the reporting period, one violation was detected by the CGC CHANDELEUR when a charter fishing vessel anchored in the Marmot Island 3NM no entry zone.

#### IV. Commercial Fishing Vessel Boarding Statistics

There were 631 domestic fisheries and fishing vessel safety boardings conducted by the U.S. Coast Guard during the reporting period. These boardings resulted in a total of 153 safety violations onboard 97 vessels and seven federal fisheries violations onboard seven vessels. Figures 1 and 2 show the historic trends for boardings and violations. Appendices B and C list the boardings which occurred during the reporting period.

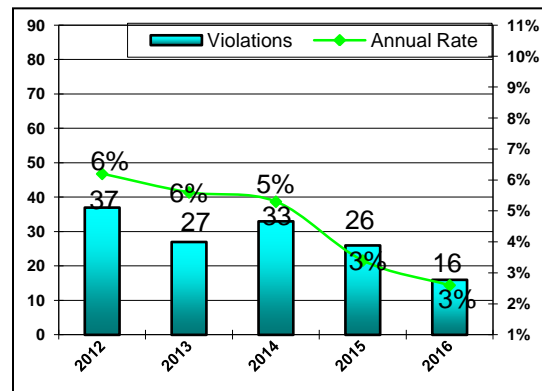
**Figure 1. Fisheries Boardings By Year**



##### Jun - Sep 2015 Boardings

F/V Boardings (at sea): .....433  
Boardings w/fisheries violations: .....10  
Violation Rate: .....2.3%

**Figure 2. Fisheries Violations by Year**



##### Jun - Sep 2016 Boardings

F/V Boardings (at sea): .....403  
Boardings w/fisheries violations: .....07  
Violation Rate: .....1.7%

#### III. Halibut and Sablefish Enforcement

Following the IFQ season opening, Coast Guard patrols completed 40 boardings of commercial fishing vessels targeting halibut and sablefish. Of these, there were 32 boardings of IFQ halibut vessels, detecting two safety violations and two fisheries violations. One fisheries violation was detected onboard a longline vessel that had discarded Pacific cod and rockfish with IFQ halibut onboard. One fisheries violation was detected onboard a longline vessel targeting halibut for not making log entries within the required time period. There were eight boardings of IFQ sablefish vessels, detecting no fisheries or safety violations.

There were 314 boardings on recreational vessels targeting halibut, of which 61 vessels received 96 safety violations, and three vessels received three fisheries violations. One vessel possessed three halibut steaks with no permit, one vessel was subsistence fishing for halibut without a license, and one vessel was subsistence fishing for halibut and exceeded the maximum allowable

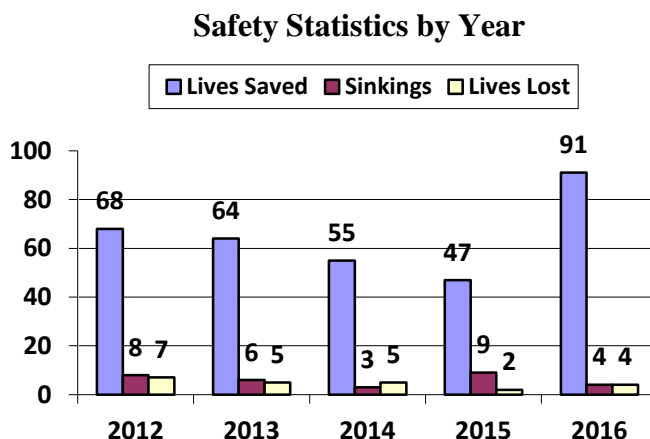
number of fishing hooks. There were 48 boardings on charter vessels targeting halibut, detecting four safety violations and two fisheries violations. One charter vessel failed to complete logbook entries as required and one charter vessel was anchored within the Marmot Island 3NM no entry zone.

## VI. Commercial Fishing Vessel Safety/Search and Rescue Cases

During the reporting period, 153 safety violations were detected on 97 vessels. There were nine voyage terminations during the reporting period for safety violations posing especially hazardous conditions. A comprehensive list of violations can be found in Appendix C.

There were 38 SAR cases involving fishing vessels in U.S. waters, resulting in 64 lives saved, four lives lost, and three vessel sinkings. Appendix A provides a comprehensive list of search and rescue cases involving fishing vessels over the reporting period.

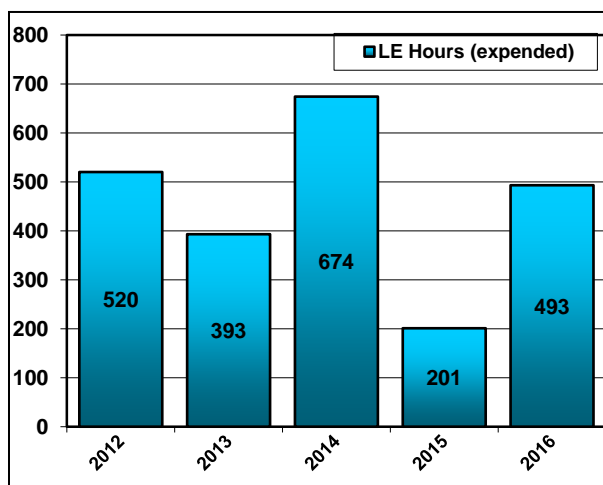
**Figure 3. Historical Overview of CFVS Statistics**



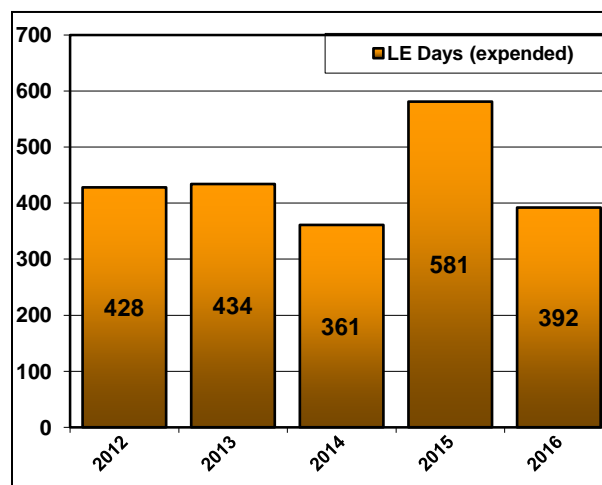
## VII. Coast Guard Resource Summary

Figures 4 and 5 show the *annual* HC-130 aircraft law enforcement hours and Medium and High Endurance Cutter days used in the Seventeenth District. Figures 6 and 7 show the same information over the last three years for the *reporting period only*.

**Figure 4. Annual HC-130 Hours**



**Figure 5. Annual Major Cutter Days**



**Jun - Sep 2015**

5 WHECs patrolled.....229 days  
 1 WMEC patrolled..... 23 days  
 3 WLBs patrolled..... 21 days  
 6 WPBs patrolled.....207 days  
**Total Cutter patrol.....480 days**

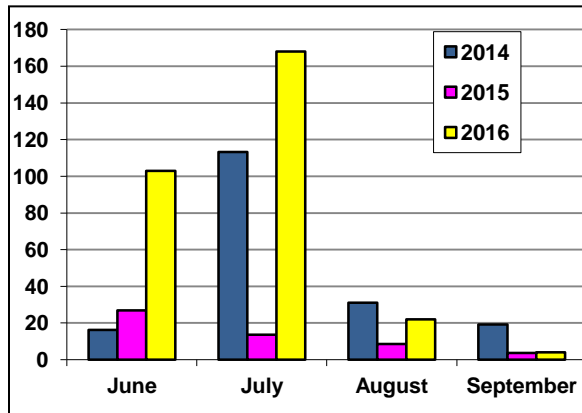
HC-130s flew .....69 hours  
 HH-60/65s flew.....345 hours

**Jun - Sep 2016**

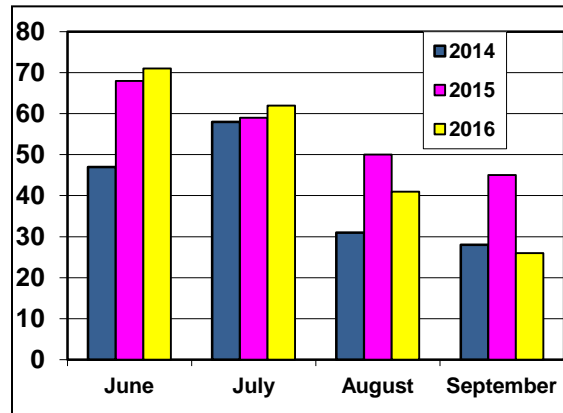
3 WHECs patrolled.....217 days  
 0 WMECs patrolled .....0 days  
 1 WLB patrolled .....8 days  
 7 WPBs patrolled.....147 days  
**Total Cutter patrol.....372 days**

HC-130s flew .....298 hours  
 HH-60/65s flew.....317 hours

**Figure 6. Jun-Sep HC-130 Hours**



**Figure 7. Jun-Sep Major Cutter Days**



**Appendix A**  
June - September 2016  
Search and Rescue Cases

| Date     | Vessel              | Case Specifics  |
|----------|---------------------|---|
| 05/29/16 | NORTHERN<br>GLACIER | D17 Command Center received a request for a MEDEVAC of a person onboard F/V NORTHERN GLACIER with a head injury south of Togiak Bay. Case evaluated and SMC (SAR Mission Controller) recommended vessel proceed to port for higher level medical care. No further Coast Guard assistance was requested.   |
| 05/31/16 | INVADER             | Sector Juneau received a report of distress from the National Park Service (NPS) for Charter Vessel INVADER, which had capsized in Glacier Bay with six persons onboard. Air Station Sitka launched an HH60. Prior to the HH60 arriving on scene, a good Samaritan located and recovered all six persons in the water. Two persons were pronounced deceased on scene. The HH60 conducted a MEDEVAC of one person to EMS in Juneau. The remaining three persons received routine medical treatment and were released. No further Coast Guard assistance was requested. This case was classified as a serious marine incident due to two deaths and one injury. |
| 06/01/16 | VELVET              | Sector Juneau received a distress call from F/V VELVET taking on water near McClean Arm, Prince of Wales Island, with two persons onboard. Sector Juneau assumed SMC and launched a 45ft response boat from Station Ketchikan. A Good Samaritan embarked the two persons prior to the response boat arriving on scene. Station Ketchikan's response boat embarked the two persons and transported them back to Ketchikan. No further Coast Guard assistance was requested.  |
| 06/01/16 | WHALESONG           | Sector Anchorage received report of F/V WHALESONG overdue for return to Homer. Air Station Kodiak deployed a C-130 and located the vessel engaged in weather avoidance. No further Coast Guard assistance was requested.  |
| 6/05/16  | SHEARWATER          | Sector Juneau received a report of F/V SHEARWATER, missing from Douglas Boat Harbor. Sector Juneau issued a UMIB and launched an HH-60 from Air Station Sitka to locate the vessel. Air Station Sitka located the vessel aground on South Island in Stephen's Passage with a deceased person onboard. Alaska State Troopers arrived and took control of case and investigation. No further Coast Guard assistance was requested.  |
| 6/06/16  | TILLIANA            | Sector Juneau received a request from F/V TILLIANA for a MEDEVAC of seriously ill crew member. Case evaluated and SMC recommended vessel proceed to port for higher level medical care within 24-48 hours. Sector Juneau assumed SMC and monitored the situation until vessel moored in Ketchikan. No further Coast Guard assistance was requested.   |

| Date     | Vessel           | Case Specifics   |
|----------|------------------|--|
| 6/11/16  | PACIFIC QUEEN    | Sector Juneau received a distress call from F/V PACIFIC QUEEN which had run aground at Frederick Point with five persons onboard. All persons onboard the vessel were embarked by a Good Samaritan. No further Coast guard assistance was requested.   |
| 06/23/16 | SEAFREEZE ALASKA | D17 received a request for a MEDEVAC of an unconscious person aboard F/V SEAFREEZE ALASKA. D17 assumed SMC and launched CGC MIDGETT to respond. CGC MIDGETT's embarked HH-65 arrived on scene and transported person to CGC MIDGETT then to Cold Bay for further transport by Guardian Flight. Guardian Flight transported person to Anchorage for medical treatment. No further Coast guard assistance was requested. |
| 06/24/16 | SUNRISE          | Sector Anchorage received a report from F/V SUNRISE that it was disabled southwest of Cordova. Sector Anchorage assumed SMC, issued a UMIB, and launched an HH-60 from FOL Cordova. The HH-60 recovered the 02 persons and transported them to Cordova. The vessel was towed by a Good Samaritan to port. No further Coast guard assistance was requested.   |
| 06/25/16 | PACIFIC STAR     | Sector Anchorage received a request from F/V PACIFIC STAR to MEDEVAC a crew member with a head injury south of Kodiak. Sector Anchorage assumed SMC and launched an HH-60 from Air Station Kodiak. The HH-60 arrived on scene and transported the person to Kodiak for medical treatment. No further Coast Guard assistance was requested.   |
| 6/29/16  | C-GULL           | Sector Anchorage received a report that F/V C-GULL was taking on water in Kachemak Bay with one person onboard. Sector Anchorage assumed SMC and issued a UMIB. CGC HICKORY launched a small boat crew to stabilize the vessel and tow it to Homer. There were no injuries and no further Coast Guard assistance was requested.  |
| 07/01/16 | CARMEN ROSE      | Sector Anchorage received a report of a fireworks accident aboard F/V CARMEN ROSE in Galena Bay that had injured one crew member. Sector Anchorage assumed SMC and launched a response boat from Station Valdez, which MEDEVAC'd the person to Valdez Harbor. No further Coast Guard assistance was requested.   |
| 07/03/16 | VESTERAALEN      | D17 received a report of a crew member with a head injury aboard F/V VESTERAALEN. Case evaluated and SMC recommended the vessel proceed to port for higher level medical care. No further Coast Guard assistance was requested.  |
| 07/04/16 | GOLDEN PACIFIC   | Sector Anchorage received a report of an engine room fire aboard F/V GOLDEN PACIFIC. Sector Anchorage assumed SMC and issued UMIB. Multiple Good Samaritans responded and the fire was extinguished with no injuries reported. No further Coast Guard assistance was requested.  |



| Date       | Vessel            | Case Specifics  |
|------------|-------------------|---|
| 07/04/16   | ALL C'S           | Station Ketchikan received a distress call from F/V ALL C'S taking on water near Canoe Cove in Annette Island. Sector Juneau assumed SMC, issued UMIB, and launched a response boat from Station Ketchikan and an HH-60 from Air Station Sitka. A Good Samaritan helped the vessel control flooding and took the vessel in tow. Station Ketchikan arrived on scene and escorted the vessels to Metlakatla. No further Coast guard Assistance was requested. |
| 07/05/16   | TAMMY LIN         | Sector Juneau received a request for advice to treat an ill crew member aboard F/V TAMMY LIN. Case evaluated and SMC recommended vessel proceed to Sitka for further medical evaluation and treatment. No further Coast Guard assistance was requested.   |
| 07/05/16   | PACIFIC HUNTER    | D17 received a report from F/V PACIFIC HUNTER that a crew member was suffering an allergic reaction northwest of Sitka. D17 assumed SMC and launched an HH-60 from Air Station Sitka to respond. Air Station Sitka delivered epinephrine pens to the vessel. D17 maintained communications with vessel until it arrived in Hoonah. No further Coast Guard assistance was requested.   |
| 07/06/16   | CHARLOTTE         | D17 received a 406 emergency beacon alert for F/V CHARLOTTE in Norton Sound. D17 assumed SMC, issued a UMIB, and launched an HH-60 from FOL Kotzebue. The HH-60 located the vessel, which was adrift due a dead battery. A Good Samaritan towed vessel to Nome while D17 maintained a communications schedule. No further Coast Guard assistance was requested.   |
| 07/06/16   | ISLAND ENTERPRISE | Sector Anchorage received a report that F/V ISLAND ENTERPRISE was taking on water near Johnstone Bay. Sector Anchorage assumed SMC, issued a UMIB, and launched CGC CHANDELEUR. A Good Samaritan took the vessel in tow. No further Coast Guard assistance was requested.   |
| 07/10/2016 | SAWBILL           | D17 received an unlocated EPIRB alert registered to F/V SAWBILL. SMC evaluated case and determined that vessel was likely fishing for Trident Seafoods in Ugashik Bay. A C-130 from Air Station Kodiak was launched, located the vessel, and confirmed that it was not in distress. No further Coast Guard assistance was requested.  |
| 07/17/16   | SERENITY          | SECTOR Juneau received a distress call from F/V SERENITY, which was taking on water near the Ketchikan ferry terminal. Sector Juneau assumed SMC, issued a UMIB, and launched a response boat from Station Ketchikan. The response boat arrived on scene, de-watered the vessel, and affected a temporary patch. Local harbormaster then towed vessel into harbor. No further Coast Guard assistance was requested.   |

| Date     | Vessel        | Case Specifics  |
|----------|---------------|---|
| 07/19/16 | QUMALAT       | D17 received a report that F/V QUMALAT was struck by a large wave, causing damage to the pilothouse and pushing the vessel aground. D17 assumed SMC and launched an HH-60 from FOL Cordova. Multiple Good Samaritans on scene dewatered and towed the vessel to Cordova. No further Coast Guard assistance was requested.   |
| 07/19/16 | SAPPHIRE BLUE | Sector Juneau received a call from charter vessel SAPPHIRE BLUE requesting assistance for a person onboard with a medical condition. Sector Juneau assumed SMC and launched a HH-60 from Air Station Sitka. The HH-60 arrived on scene, hoisted the patient off the vessel, and transported to local EMS in Sitka. No further Coast Guard assistance was requested.   |
| 7/23/16  | CARMELINA     | D17 receive an EPIRB SARSAT alert for F/V CARMELINA in Shelikof Strait; vessel had capsized. Sector Anchorage assumed SMC, issued UMIB, and launched a HH-60 from Air Station Kodiak. Multiple Good Samaritans on scene recovered all crew members and transported to Kodiak; there were no reported injuries. No further Coast Guard Vessel was requested. Vessel was later salvaged by master.  |
| 7/23/16  | AMBITION      | Sector Anchorage received a report that F/V AMBITION was taking on water northwest of Cold Bay. Sector Anchorage assumed SMC, issued a UMIB, and launched a C-130 from Air Station Kodiak. Multiple Good Samaritans on scene recovered all five crew members from F/V AMBITION shortly after it sank and transported to False Pass. No injuries were reported and no further Coast Guard assistance was requested. Sector Anchorage determined the case to be a major marine incident because an estimated 2,500 gallons of diesel fuel, 150 gallons of gasoline, and 50 gallons of lube oil were onboard at the time of sinking. |
| 07/25/16 | SPORADES      | Sector Juneau received a distress call from F/V SPORADES which had run aground near North Island with two persons onboard. Sector Juneau assumed SMC and directed CGC LIBERTY to respond. CGC LIBERTY arrived on scene and towed vessel to Auke Bay, where Station Juneau met the vessel and towed it the rest of the way into port. No further Coast Guard assistance was requested.   |
| 07/26/16 | ALASKA JURIS  | D17 received a 406 EPIRB alert from F/V ALASKA JURIS which was taking on water and preparing to abandon ship with 46 persons onboard near Kiska Island. D17 assumed SMC, issued UMIB, and launched two HH-60s and two C-130s. A C-130 arrived on scene and accounted for all crew members in liferafts. Multiple Good Samaritans arrived on scene and recovered all crew members with no reported injuries. No further Coast Guard assistance was requested. ALASKA JURIS later sank. Sector Anchorage determined the case to be a major marine incident. Investigation is ongoing.   |

| Date     | Vessel    | Case Specifics   |
|----------|-----------|--|
| 07/29/16 | WARRIOR   | D17 received a report that F/V WARRIOR was disabled northwest of Kodiak. SMC evaluated the case, determined no immediate danger, and issued a Marine Information Request Broadcast (MARB). A Good Samaritan responded and delivered enough fuel for F/V WARRIOR to return to Homer. No further Coast Guard assistance was requested.   |
| 07/31/16 | ADVENTURE | Sector Juneau received a call from F/V ADVENTURE that it was anchored and disabled near Hobart Bay with one person onboard. SMC evaluated the case, determined no immediate danger, and issued a MARB. A Good Samaritan responded to the MARB and delivered enough fuel for F/V ADVENTURE to return to Petersburg. No further Coast Guard assistance was requested.                              |
| 07/31/16 | AQUILA    | Sector Juneau received a call from F/V AQUILA requesting medical advice for an ill crew member. SMC evaluated the case and launched a response boat from Station Ketchikan to locate the vessel; patient was disembarked onto the response boat and transported to Ketchikan for medical treatment. No further Coast Guard assistance was requested.   |
| 08/01/16 | UNIMAK    | D17 received a MEDEVAC request for a crew member experiencing medical difficulties onboard F/V UNIMAK northwest of Dutch Harbor. D17 launched a HH-65 out of Dutch Harbor to respond. The HH-65 hoisted patient off vessel, and transported to Dutch Harbor for medical treatment. No further Coast Guard assistance was requested.  |
| 08/01/16 | SANCTUARY | Sector Anchorage received a report that charter vessel SANCTUARY was overdue. Sector Anchorage assumed SMC and issued a UMIB. After a short time, the vessel was located and determined to not be in any distress. No further Coast Guard assistance was requested.  |
| 08/04/16 | VANISLE   | Sector Anchorage received a distress call from Canadian R/V VANISLE which had ran aground with four persons onboard near Sand Point. D17 assumed SMC, issued a UMIB, and launched a HH-60 and C-130. Multiple Good Samaritans arrived on scene, pulled the vessel off the rocks, effect temporary repairs, and escort the vessel to Sand Point. No further Coast Guard assistance was requested. |
| 08/08/16 | SEABORN I | D17 received a local SARSAT alert from F/V SEABORN I near Biorka Sound. Sector Juneau assumed SMC, issued a UMIB, and diverted a HH-60 from Air Station Sitka. Sector Juneau was able to contact the vessel and confirm that the EPIRB was accidentally activated. No further Coast Guard assistance was requested.  |

| Date     | Vessel       | Case Specifics   |
|----------|--------------|--|
| 08/13/16 | RED HUNTER   | D17 received a report from an on scene Good Samaritan that F/V RED HUNTER was taking on water with two persons on board near Port Moller. D17 assumed SMC and maintained communications with the Good Samaritan escorting F/V RED HUNTER until both vessels arrived in Port Moller. No further Coast Guard assistance was requested.   |
| 08/14/16 | BEAUFORT SEA | Sector Juneau received a report from F/V BEAUFORT SEA that a crew member was unaccounted for and may have fallen overboard while the vessel was anchored outside of Auke Bay. Sector Juneau assumed SMC, issued a UMIB, and launched multiple SAR assets to conduct a search. Station Juneau response boats, an Air Station Sitka HH-60, CGC ELDERBERRY, CGC MAPLE, CGC SWORDFISH and an AST boat searched the area for 24 hours with no results. The search was subsequently suspended. |
| 08/15/16 | TEMPTATION   | D17 received a report of a collision between F/V VIXEN and F/V TEMPTATION near Culross Island. As a result of the collision, a crew member aboard F/V TEMPTATION suffered a head injury. D17 assumed SMC. A HH-60 from FOL Cordova diverted to locate the vessel, hoist off the patient, and transported to Cordova for medical treatment. No further Coast Guard assistance was requested.  |
| 09/01/16 | CARMELA      | Sector Anchorage received a distress call from F/V CARMELA which has ran aground and was taking on water west of Cordova. Sector Anchorage assumed SMC, issued a UMIB, and launched a response boat from Station Valdez. Multiple Good Samaritans on scene assisted with de-watering and re-floating the vessel. The Coast Guard response boat escorted the vessel back to Cordova; no injuries were reported. No further Coast Guard assistance was requested.                          |

**Appendix B**  
June - September 2016  
Fisheries Boardings without Violations

| <b>DATE</b> | <b>VSL NAME</b> | <b>SPECIES</b> | <b>AREA</b> |
|-------------|-----------------|----------------|-------------|
| 5/21/16     | NANCY MARIE     | 410            | 659         |
| 5/21/16     | AK2982N         | 200            | 2C          |
| 5/22/16     | KB39106         | 200            | 3A          |
| 5/22/16     | KARELIA         | 710            | CG          |
| 5/22/16     | AGHILEEN        | 962            | 649         |
| 5/22/16     | KRUZOF          | 200/110        | 3A          |
| 5/23/16     | SIERRA MAR      | 200            | 3A          |
| 5/26/16     | AUTOMATIC       | 710            | 630         |
| 5/27/16     | SEA VENTURE     | 200            | 4B          |
| 5/27/16     | ALASKAN STAR    | 200            | 4B          |
| 5/27/16     | LARISA M        | 200            | 4B          |
| 5/28/16     | ALASKAN WARRIOR | 121            | 542         |
| 5/28/16     | EMPRESS         | 200            | 3A          |
| 5/28/16     | ON OUR WAY      | 200            | 2C          |
| 5/28/16     | RUFF RIDER      | 200            | 2C          |
| 5/28/16     | RASCAL          | 200            | 2C          |
| 5/28/16     | CASCADE         | 710            | CG          |
| 5/28/16     | MIDDLETON       | 710            | CG          |
| 5/30/16     | AK5555AK        | 200            | 2C          |
| 5/30/16     | AK2714AF        | 200            | 2C          |
| 6/1/16      | CHRISTY         | 110            | 518         |
| 6/1/16      | CAPE KALEKTA    | 200            | 4A          |
| 6/1/16      | YORJIM          | 110            | 518         |
| 6/2/16      | TARAH ROSE      | 450            | 649         |
| 6/2/16      | LEWIS G         | 450            | 649         |
| 6/2/16      | TAIL WALKER     | 450            | 649         |
| 6/2/16      | GRAYCI LYNN     | 450            | 649         |
| 6/2/16      | WUDAHAD         | 450            | 649         |
| 6/2/16      | CORNERSTONE     | 450            | 649         |
| 6/2/16      | NEW WAVE        | 450            | 649         |
| 6/2/16      | FRONT RUNNER    | 450            | 649         |
| 6/2/16      | PAULE BAY       | 450            | 649         |
| 6/2/16      | ALBATROSS       | 450            | 649         |
| 6/2/16      | CANVASBACK      | 450            | 649         |
| 6/2/16      | AMGELA MARIE    | 450            | 649         |
| 6/2/16      | C AND I         | 450            | 649         |
| 6/2/16      | GRANITE CAPE    | 450            | 649         |

| DATE    | VSL NAME          | SPECIES | AREA |
|---------|-------------------|---------|------|
| 6/2/16  | COPPERKINGTOO     | 450     | 649  |
| 6/2/16  | SILVER LADY       | 200     | 4B   |
| 6/3/16  | AK9279AF          | 200     | 2C   |
| 6/3/16  | CERULEAN          | 200     | 4B   |
| 6/4/16  | SHILO II          | 200     | 2C   |
| 6/9/16  | VANSEE            | 200     | 4D   |
| 6/10/16 | ARCTIC PROWLER    | 110     | 517  |
| 6/10/16 | ORACLE            | 200/710 | 4A   |
| 6/10/16 | GREAT PACIFIC     | 270     | 517  |
| 6/10/16 | STAR FISH         | 270     | 517  |
| 6/10/16 | TRAVELER          | 270     | 517  |
| 6/10/16 | MARK 1            | 270     | 509  |
| 6/10/16 | AURORA            | 270     | 509  |
| 6/10/16 | STARWARD          | 270     | 509  |
| 6/10/16 | AURIGA            | 270     | 509  |
| 6/10/16 | ALSEA             | 270     | 509  |
| 6/11/16 | CHELSEA K         | 270     | 509  |
| 6/11/16 | GOLD RUSH         | 270     | 509  |
| 6/11/16 | MAJESTY           | 270     | 509  |
| 6/11/16 | ARCTIC RAM        | 270     | 509  |
| 6/11/16 | PACIFIC FURY      | 270     | 509  |
| 6/11/16 | MISTY DAWN        | 270     | 509  |
| 6/11/16 | VIKING            | 270     | 509  |
| 6/11/16 | PROGRESS          | 270     | 509  |
| 6/11/16 | MORNING STAR      | 270     | 517  |
| 6/14/16 | BERING DEFENDER   | 270     | 517  |
| 6/14/16 | MARCY J           | 270     | 517  |
| 6/14/16 | ANITA J           | 270     | 517  |
| 6/15/16 | DESTINATION       | 270     | 517  |
| 6/15/16 | OCEANIC           | 270     | 517  |
| 6/15/16 | BRISTOL EXPLORER  | 110     | 517  |
| 6/15/16 | FIERCE ALLEGIANCE | 270     | 517  |
| 6/15/16 | MARGARET LYNN     | 270     | 517  |
| 6/15/16 | PACIFIC VIKING    | 270     | 517  |
| 6/16/16 | AK2035AG          | 200     | 2C   |
| 6/16/16 | AK8174AN          | 200     | 2C   |
| 6/16/16 | AK4770AR          | 200     | 2C   |
| 6/16/16 | AK4771F           | 200     | 2C   |
| 6/16/16 | AK2698AR          | 200     | 2C   |

| DATE    | VSL NAME         | SPECIES | AREA |
|---------|------------------|---------|------|
| 6/16/16 | AK5426M          | 200     | 2C   |
| 6/16/16 | AK8113AN         | 200     | 2C   |
| 6/16/16 | AK7338P          | 200     | 2C   |
| 6/16/16 | BRENNA A         | 420     | 509  |
| 6/16/16 | GLADIATOR        | 420     | 509  |
| 6/16/16 | OCEAN PHOENIX    | 420     | 509  |
| 6/17/16 | ALASKAN DEFENDER | 270     | 509  |
| 6/17/16 | STARLITE         | 270     | 509  |
| 6/17/16 | PACIFIC MARINER  | 410     | 509  |
| 6/17/16 | AK4226AD         | 200     | 2C   |
| 6/18/16 | AK1560AG         | 200     | 2C   |
| 6/18/16 | EARLY DAWN       | NA      | 649  |
| 6/20/16 | COLLIER BROTHERS | 270     | 517  |
| 6/20/16 | STORM PETREL     | 270     | 517  |
| 6/21/16 | ARCTIC FJORD     | 270     | 509  |
| 6/21/16 | WESTWARD I       | 270     | 509  |
| 6/21/16 | CAPE KIWANDA     | 270     | 509  |
| 6/22/16 | HAWKEYE          | 200     | 2C   |
| 6/22/16 | AK9439AK         | 200     | 2C   |
| 6/23/16 | CAROL LOUIS      | 410     | 659  |
| 6/23/16 | SUMNER           | 410     | 659  |
| 6/23/16 | NETTED DREAMS    | 410     | 659  |
| 6/23/16 | AUDRA K          | 410     | 659  |
| 6/23/16 | SWAN             | 410     | 659  |
| 6/25/16 | MARINER II       | NA      | 659  |
| 6/25/16 | RJ               | 420     | 514  |
| 6/25/16 | EDAF             | 420     | 514  |
| 6/25/16 | MARINA JO        | 420     | 514  |
| 6/25/16 | GHOST            | 420     | 514  |
| 6/25/16 | SOUND AND FURY   | 420     | 514  |
| 6/25/16 | TURBULENCE       | 420     | 514  |
| 6/25/16 | INNOVATOR        | 420     | 514  |
| 6/25/16 | OKUMA            | 420     | 514  |
| 6/26/16 | LADY MINDY       | 420     | 514  |
| 6/26/16 | CENTAUR          | 420     | 514  |
| 6/26/16 | GK               | 420     | 514  |
| 6/26/16 | ALEX H           | 420     | 514  |
| 6/26/16 | ROADSTER         | 420     | 514  |

| DATE    | VSL NAME        | SPECIES | AREA |
|---------|-----------------|---------|------|
| 6/26/16 | SBS PROVIDER    | 420     | 514  |
| 6/26/16 | MARILYN MARIE   | 420     | 514  |
| 6/26/16 | SHANNARA        | 420     | 514  |
| 6/26/16 | BLAKE B         | 420     | 514  |
| 6/26/16 | AK5659M         | 200     | 2C   |
| 6/26/16 | MISS MUFFETT    | 200     | 2C   |
| 6/26/16 | FRIENDSHIP      | 200     | 2C   |
| 6/26/16 | IRISH ROSE      | 200     | 2C   |
| 6/27/16 | AMBITION        | 410     | 630  |
| 6/27/16 | ALASKA OCEAN    | 270     | 517  |
| 6/27/16 | ARCTIC STORM    | 270     | 517  |
| 6/28/16 | KALYN ANN       | 410     | 659  |
| 6/28/16 | BEAUTY BAY      | 110     | 513  |
| 6/28/16 | HOLLOWAY        | 420     | 514  |
| 6/28/16 | STORM CREST     | 420     | 514  |
| 6/28/16 | YUKON JERRY     | 420     | 514  |
| 6/28/16 | EL NAYAR        | 420     | 514  |
| 6/29/16 | AK7557AN        | 200     | 2C   |
| 6/29/16 | INTEGRITY       | 410     | 659  |
| 6/29/16 | KEEPER          | 410     | 659  |
| 6/29/16 | WOODPECKER      | 200     | 2C   |
| 6/30/16 | ENTERPRISE      | 127     | 519  |
| 7/1/16  | LAST DOLLAR     | 410     | 659  |
| 7/2/16  | BARRACUDA       | 410     | 659  |
| 7/2/16  | SEA SPRAY       | 410     | 659  |
| 7/3/16  | OR525UC         | 200     | 2C   |
| 7/3/16  | AK7546M         | 200     | 2C   |
| 7/3/16  | AK5220AM        | 200     | 2C   |
| 7/3/16  | VINDICATOR      | 410     | 659  |
| 7/4/16  | MEGAN           | 410     | 659  |
| 7/4/16  | EMMANUEL        | 410     | 659  |
| 7/4/16  | PASSAGE         | 410     | 659  |
| 7/4/16  | EILEEN J        | 410     | 659  |
| 7/4/16  | AK3989AK        | 200     | 2C   |
| 7/4/16  | OR477AFA        | 200     | 2C   |
| 7/4/16  | AK8635L         | 200     | 2C   |
| 7/5/16  | JULIA BREEZE    | 200     | 4A   |
| 7/5/16  | WESTERN MARINER | 200     | 4A   |
| 7/5/16  | FOREIGNOR       | 200     | 4A   |



| DATE    | VSL NAME          | SPECIES | AREA |
|---------|-------------------|---------|------|
| 7/5/16  | SHARON SUE        | NA      | 659  |
| 7/6/16  | TATY Z            | 200     | 4A   |
| 7/6/16  | KATIE JEAN        | 200     | 4B   |
| 7/6/16  | TONI MARIE        | 410     | 659  |
| 7/6/16  | MARY LOU          | NA      | 659  |
| 7/7/16  | IPSWITCH          | 410     | 659  |
| 7/7/16  | CATHERINE         | 410     | 659  |
| 7/7/16  | NJORD             | 410     | 659  |
| 7/7/16  | OCEAN RAIDER      | 410     | 659  |
| 7/7/16  | MRS. MAC          | 410     | 659  |
| 7/7/16  | PACIFIC DREAM     | 410     | 659  |
| 7/7/16  | SOLSTRAAL         | 410     | 659  |
| 7/7/16  | NORA C            | 410     | 659  |
| 7/7/16  | FOG               | 410     | 659  |
| 7/7/16  | OCEANAIRE         | 410     | 659  |
| 7/7/16  | JANIE C           | 410     | 659  |
| 7/7/16  | KETA              | 410     | 659  |
| 7/7/16  | DEEP SEA          | 410     | 659  |
| 7/7/16  | MOLLIE LINDELL    | 410     | 659  |
| 7/7/16  | EAGER             | 410     | 659  |
| 7/8/16  | AK4331K           | 200     | 2C   |
| 7/8/16  | ESCAPADE          | 200     | 2C   |
| 7/9/16  | AK8313AP          | 200     | 2C   |
| 7/9/16  | ISLANDER          | 200     | 2C   |
| 7/9/16  | BEACH BOY         | 200     | 2C   |
| 7/9/16  | DIRTY OAR         | 200     | 2C   |
| 7/9/16  | AK7841AJ          | 200     | 2C   |
| 7/11/16 | COMMODORE         | 270     | 519  |
| 7/11/16 | SEA WOLF          | 270     | 519  |
| 7/12/16 | AMERICAN TRIUMPH  | 270     | 517  |
| 7/12/16 | OCEAN ROVER       | 270     | 517  |
| 7/12/16 | NORTHER JAEGER    | 270     | 517  |
| 7/13/16 | SERENITY          | 410     | 659  |
| 7/13/16 | FRONTIER EXPLORER | 110     | 524  |
| 7/13/16 | GLACIER BAY       | 110     | 523  |
| 7/13/16 | FRONTIER SPIRIT   | 110     | 524  |
| 7/13/16 | SUNWARD           | 200     | 4A   |
| 7/14/16 | PERSEVERENCE      | 200     | 3A   |
| 7/14/16 | FOUR ACES         | 200     | 3A   |

| DATE    | VSL NAME        | SPECIES | AREA |
|---------|-----------------|---------|------|
| 7/14/16 | AK7969AJ        | 200     | 3A   |
| 7/14/16 | PROVIDER        | 910     | 659  |
| 7/14/16 | DAY SPRING      | 910     | 659  |
| 7/15/16 | GRAY LIGHT      | 200     | 3A   |
| 7/15/16 | AK5665AM        | 200     | 2C   |
| 7/15/16 | AK1859AN        | 200     | 2C   |
| 7/15/16 | THE OLD BLISTER | 200     | 2C   |
| 7/15/16 | AK4505AD        | 200     | 2C   |
| 7/15/16 | AK7879D         | 200     | 2C   |
| 7/15/16 | KAYTOS          | 200     | 2C   |
| 7/15/16 | CELTIC COHO     | 200     | 2C   |
| 7/15/16 | AK1911AN        | 200     | 2C   |
| 7/15/16 | AK5360AF        | 200     | 2C   |
| 7/15/16 | AK1972AF        | 200     | 2C   |
| 7/16/16 | AK1693AJ        | 200     | 2C   |
| 7/16/16 | AK8252AN        | 200     | 2C   |
| 7/16/16 | AK2489AP        | 200     | 2C   |
| 7/16/16 | AK4668AR        | 200     | 2C   |
| 7/16/16 | AK5747L         | 200     | 2C   |
| 7/16/16 | AK6122AJ        | 200     | 2C   |
| 7/16/16 | AK4177AP        | 200     | 2C   |
| 7/16/16 | AK9950AG        | 200     | 2C   |
| 7/16/16 | AK4032AJ        | 200     | 2C   |
| 7/16/16 | AK2864AL        | 200     | 2C   |
| 7/16/16 | COMPANERA       | 200     | 2C   |
| 7/16/16 | MELANIE ANN     | 410     | 659  |
| 7/16/16 | JOHNNIE B       | 410     | 659  |
| 7/16/16 | CORNA M         | 410     | 659  |
| 7/16/16 | LAKE BAY        | 410     | 659  |
| 7/16/16 | HOTSPUR         | 410     | 659  |
| 7/16/16 | PACIFIC FISHER  | 410     | 659  |
| 7/16/16 | ROSE LEE        | 410     | 659  |
| 7/16/16 | AMANDA RAE      | 200     | 2C   |
| 7/16/16 | ADVENTUROUS     | 200     | 2C   |
| 7/16/16 | HUNTER'S HOPE   | 200     | 2C   |
| 7/16/16 | RAINSONG        | 200     | 3A   |
| 7/16/16 | EMERALD FJORD   | 200     | 3A   |
| 7/16/16 | TIA ROSE        | 200     | 3A   |
| 7/16/16 | CHANGE ORDER    | 200     | 3A   |

| DATE    | VSL NAME      | SPECIES | AREA |
|---------|---------------|---------|------|
| 7/16/16 | TRANA         | 200     | 3A   |
| 7/16/16 | AK8778AC      | 200     | 3A   |
| 7/16/16 | LICKETY SPLIT | 200     | 3A   |
| 7/16/16 | FAMILY FUN    | 200     | 3A   |
| 7/17/16 | VIRGINA LEE   | 200     | 3A   |
| 7/17/16 | BANDIT        | 200     | 3A   |
| 7/17/16 | SEA MASTER    | 200     | 3A   |
| 7/17/16 | SERENITY      | NA      | 659  |
| 7/17/16 | AK0857P       | 200     | 2C   |
| 7/17/16 | AK3646AJ      | 200     | 2C   |
| 7/17/16 | AK7531AD      | 200     | 2C   |
| 7/17/16 | AK5909AD      | 200     | 2C   |
| 7/17/16 | AK3370N       | 200     | 2C   |
| 7/17/16 | AK1929AG      | 200     | 2C   |
| 7/20/16 | AK7164P       | 200     | 2C   |
| 7/20/16 | CATIE BELL    | 200     | 3A   |
| 7/22/16 | NAP TIME      | 200     | 3A   |
| 7/22/16 | AK8812AN      | 200     | 2C   |
| 7/22/16 | AK8233AL      | 200     | 2C   |
| 7/22/16 | AK3647AN      | 200     | 2C   |
| 7/22/16 | AK3000N       | 200     | 2C   |
| 7/23/16 | AK4895AM      | 200     | 3A   |
| 7/23/16 | AK1981AK      | 200     | 3A   |
| 7/23/16 | AK9123AB      | 200     | 3A   |
| 7/23/16 | AK9799AG      | 200     | 3A   |
| 7/23/16 | AK8999K       | 200     | 3A   |
| 7/24/16 | THE DASH      | 200     | 2C   |
| 7/24/16 | AK2565AK      | 200     | 2C   |
| 7/24/16 | AK5448AL      | 200     | 3A   |
| 7/24/16 | AK3310AK      | 200     | 3A   |
| 7/24/16 | KAREN K       | 200     | 3A   |
| 7/26/16 | COVENTINA     | 430     | 649  |
| 7/26/16 | ANDY SEA      | 430     | 649  |
| 7/27/16 | KATMANDEUX    | 200     | 2C   |
| 7/27/16 | AK4551J       | 200     | 2C   |
| 7/27/16 | AK9931AL      | 200     | 2C   |
| 7/28/16 | NOBLE EAGLE   | 200     | 2C   |
| 7/28/16 | TALON         | 200     | 2C   |
| 7/28/16 | 18 EAGLES     | 200     | 2C   |

| DATE    | VSL NAME         | SPECIES | AREA |
|---------|------------------|---------|------|
| 7/28/16 | QUICKSILVER      | 200     | 2C   |
| 7/28/16 | SEADUCTION       | 200     | 3A   |
| 7/28/16 | AK6045AJ         | 200     | 3A   |
| 7/28/16 | AK1493           | 200     | 3A   |
| 7/28/16 | FRONTIER MARINER | 110     | 521  |
| 7/29/16 | PIONEER          | 200     | 2C   |
| 7/29/16 | KODA             | 200     | 2C   |
| 7/29/16 | VANGUARD         | 270     | 517  |
| 7/30/16 | AK7558AJ         | 200     | 2C   |
| 7/30/16 | AK1928AG         | 200     | 2C   |
| 7/30/16 | AK4738AN         | 200     | 2C   |
| 7/30/16 | AK2416P          | 200     | 2C   |
| 7/30/16 | AK6358AJ         | 200     | 649  |
| 7/31/16 | AK4515H          | 200     | 2C   |
| 7/31/16 | AK5652AE         | 200     | 2C   |
| 7/31/16 | AK8770L          | 200     | 2C   |
| 8/1/16  | AK4401           | 200     | 3A   |
| 8/1/16  | REEL KING        | 200     | 2C   |
| 8/1/16  | RAY              | 200     | 3A   |
| 8/1/16  | SWEE' PEA        | 200     | 3A   |
| 8/2/16  | VALIENT          | NA      | 630  |
| 8/3/16  | BELOW            | 200     | 649  |
| 8/3/16  | AK7041P          | 200     | 2C   |
| 8/3/16  | KENANSHOW QUEEN  | 200     | 2C   |
| 8/3/16  | LADY J           | 440     | 630  |
| 8/3/16  | MAX WILLIAM      | 200     | 3A   |
| 8/3/16  | SUNDY            | 200     | 3A   |
| 8/4/16  | DANGEROUS CAPE   | 440     | 630  |
| 8/4/16  | AK6167AK         | 200     | 2C   |
| 8/5/16  | AK7549           | 200     | 3A   |
| 8/5/16  | AK3186AF         | 200     | 3A   |
| 8/5/16  | AK5538D          | 200     | 3A   |
| 8/5/16  | AK2962L          | 200     | 3A   |
| 8/5/16  | AK3447L          | 200     | 3A   |
| 8/6/16  | AK3362E          | 200     | 2C   |
| 8/6/16  | EVENING STAR     | 200     | 4B   |
| 8/6/16  | PAPA BEAR        | 200     | 3A   |
| 8/6/16  | SEADREAMER       | 200     | 3A   |
| 8/6/16  | AK5679AF         | 200     | 3A   |

| DATE    | VSL NAME      | SPECIES | AREA |
|---------|---------------|---------|------|
| 8/6/16  | AK9482M       | 200     | 3A   |
| 8/6/16  | AK6781AJ      | 200     | 3A   |
| 8/6/16  | AK5574AL      | 200     | 3A   |
| 8/7/16  | CORAL LEE     | 200/710 | 4A   |
| 8/8/16  | AK2693AJ      | 200     | 3A   |
| 8/8/16  | SEA HAWK      | 200     | 3A   |
| 8/8/16  | AK3934AM      | 200     | 3A   |
| 8/8/16  | NAUTI LADY    | 200     | 3A   |
| 8/8/16  | IRISH         | 200     | 3A   |
| 8/8/16  | GIB & HAL     | 200     | 3A   |
| 8/8/16  | MISTY DAWN    | 270     | 517  |
| 8/8/16  | NORTHERN HAWK | 270     | 517  |
| 8/8/16  | SEAWINGS      | 200     | 3A   |
| 8/8/16  | AK7338AP      | 200     | 3A   |
| 8/9/16  | AK2038AK      | 200     | 3A   |
| 8/9/16  | AK9019AE      | 200     | 2C   |
| 8/9/16  | COLUMBIA      | 270     | 519  |
| 8/9/16  | WA WA         | 200     | 3A   |
| 8/9/16  | 1198962       | 200     | 3A   |
| 8/9/16  | SOUND FUN     | 200     | 3A   |
| 8/9/16  | LONG VIEW     | 200     | 3A   |
| 8/9/16  | AKYSTAR       | 200     | 3A   |
| 8/9/16  | SANCTUARY     | 200     | 3A   |
| 8/9/16  | CAROL RAY     | 200     | 3A   |
| 8/9/16  | MIZZ KIM      | 200     | 3A   |
| 8/9/16  | SEAFARER      | 200     | 3A   |
| 8/9/16  | HOLLY RAE     | 200     | 2C   |
| 8/9/16  | AK8516AL      | 200     | 2C   |
| 8/9/16  | AK7601P       | 200     | 2C   |
| 8/9/16  | CAYMAN ISLE   | 200     | 2C   |
| 8/9/16  | MAIKO         | 200     | 2C   |
| 8/9/16  | AK3407AP      | 200     | 2C   |
| 8/9/16  | MIGHTY O      | 200     | 3A   |
| 8/10/16 | SWEET T       | 200     | 3A   |
| 8/10/16 | GUNNAR J      | 200     | 3A   |
| 8/10/16 | AK2002AN      | 200     | 3A   |
| 8/10/16 | AK8009P       | 200     | 3A   |
| 8/10/16 | AK9996AJ      | 200     | 3A   |
| 8/10/16 | LUCKY ISLAND  | 910     | 519  |

| DATE    | VSL NAME      | SPECIES | AREA |
|---------|---------------|---------|------|
| 8/10/16 | AK7839P       | 200     | 2C   |
| 8/10/16 | DOLPHIN       | 200     | 3A   |
| 8/10/16 | FOMO          | 200     | 3A   |
| 8/10/16 | AK2345AR      | 200     | 2C   |
| 8/10/16 | AK4951AK      | 200     | 2C   |
| 8/10/16 | EAGLE SCOUT   | 200     | 2C   |
| 8/10/16 | OCEAN ROGUE   | 200     | 2C   |
| 8/10/16 | PACIFIC       | 200     | 2C   |
| 8/11/16 | AK8385AN      | 200     | 2C   |
| 8/11/16 | AK3153H       | 200     | 2C   |
| 8/10/16 | AK1708H       | 200     | 3A   |
| 8/10/16 | AK8079P       | 200     | 3A   |
| 8/10/16 | AK7222AJ      | 200     | 3A   |
| 8/10/16 | AK3014AK      | 200     | 3A   |
| 8/10/16 | AK1847AL      | 200     | 3A   |
| 8/10/16 | ORZ11VE       | 200     | 3A   |
| 8/11/16 | AK1435AL      | 200     | 3A   |
| 8/11/16 | AK4871AG      | 200     | 3A   |
| 8/11/16 | AK6580        | 200     | 3A   |
| 8/11/16 | AK1717D       | 200     | 3A   |
| 8/11/16 | AK322JG       | 200     | 3A   |
| 8/11/16 | AK198AN       | 200     | 3A   |
| 8/11/16 | AK2962        | 200     | 3A   |
| 8/11/16 | SELMA         | NA      | 659  |
| 8/11/16 | SHINAKU       | 200     | 2C   |
| 8/11/16 | FISHING FEVER | 200     | 2C   |
| 8/11/16 | PIONEER       | 200     | 2C   |
| 8/11/16 | VITUS         | 200     | 2C   |
| 8/11/16 | DAVANTI       | 200     | 2C   |
| 8/12/16 | AK1427AG      | 200     | 3A   |
| 8/12/16 | TEXAS PIRATE  | 155     | 649  |
| 8/12/16 | AK8969AL      | 430     | 649  |
| 8/12/16 | AK2793AM      | 430     | 649  |
| 8/12/16 | AK3676AG      | 430     | 649  |
| 8/12/16 | ONE MORE      | 430     | 649  |
| 8/12/16 | AK4707AC      | 430     | 649  |
| 8/12/16 | SEA SPRAY     | 200     | 3A   |
| 8/12/16 | J&J           | 200     | 3A   |
| 8/12/16 | AK7485N       | 430     | 649  |

| DATE    | VSL NAME          | SPECIES | AREA |
|---------|-------------------|---------|------|
| 8/12/16 | AK5307C           | 200     | 2C   |
| 8/12/16 | DUTCH LADY        | 200     | 2C   |
| 8/12/16 | AK1777AK          | 200     | 2C   |
| 8/12/16 | AK9651AF          | 200     | 2C   |
| 8/12/16 | MISS CRAB         | 200     | 2C   |
| 8/13/16 | AK8225M           | 430     | 649  |
| 8/13/16 | EL CAMERON        | 430     | 649  |
| 8/13/16 | AK4187K           | 430     | 649  |
| 8/13/16 | AK0803N           | 430     | 649  |
| 8/13/16 | AK6411AF          | 200     | 3A   |
| 8/13/16 | AK3518AN          | 200     | 3A   |
| 8/13/16 | AK4057M           | 430     | 649  |
| 8/13/16 | AK1983AK          | 430     | 649  |
| 8/13/16 | AK6373AM          | 430     | 649  |
| 8/13/16 | AK4349AG          | 430     | 649  |
| 8/13/16 | AK6641AP          | 200     | 2C   |
| 8/14/16 | AK1838AG          | 200     | 2C   |
| 8/14/16 | AK1498AN          | 200     | 2C   |
| 8/17/16 | HIN: QSBY3009C616 | 200     | 3A   |
| 8/17/16 | ALEUTIAN ISLE     | 710     | CG   |
| 8/17/16 | AK221M            | 200     | 3A   |
| 8/17/16 | AK8977AE          | 200     | 3A   |
| 8/18/16 | SILVER LADY       | 710     | CG   |
| 8/18/16 | AK3130D           | 200     | 3A   |
| 8/18/16 | AK4456AA          | 200     | 3A   |
| 8/18/16 | AK4455AA          | 200     | 3A   |
| 8/18/16 | ATTA BOY          | 200     | 3A   |
| 8/18/16 | AK1498AN          | 200     | 2C   |
| 8/19/16 | GULF MAIDEN       | 200     | 4A   |
| 8/19/16 | MISSY RAE         | 200     | 3A   |
| 8/20/16 | ID3850F           | 200     | 3A   |
| 8/20/16 | AK8813AB          | 200     | 3A   |
| 8/20/16 | AK5020K           | 200     | 3A   |
| 8/20/16 | SHARRY LYNN       | 430     | 640  |
| 8/20/16 | BARBIE II         | 430     | 640  |
| 8/20/16 | AK4759N           | 200     | 3A   |
| 8/20/16 | BARELY AWAKE      | 430     | 640  |
| 8/20/16 | GULF DAWNING      | 430     | 640  |
| 8/20/16 | AK4277AR          | 200     | 2C   |

| DATE    | VSL NAME              | SPECIES | AREA |
|---------|-----------------------|---------|------|
| 8/20/16 | AK1625AR              | 200     | 2C   |
| 8/20/16 | EMPTY POCKET          | 200     | 2C   |
| 8/20/16 | STILL DREAMING        | 200     | 2C   |
| 8/21/16 | WN7160NW              | 200     | 2C   |
| 8/21/16 | KISUTCH               | 200     | 2C   |
| 8/21/16 | AK2442L               | 200     | 2C   |
| 8/22/16 | BARBARA               | 430     | 659  |
| 8/22/16 | AK9407AN              | 200     | 2C   |
| 8/22/16 | ALEUTIAN NO. 1        | 923     | 542  |
| 8/22/16 | BLUE EAGLE III        | 430     | 640  |
| 8/23/16 | MUSKRAT               | 430     | 649  |
| 8/23/16 | ALASKA TROJAN         | 923     | 542  |
| 8/23/16 | EZ-RIDER              | 200     | 2C   |
| 8/24/16 | EAGLE DIFFERENCE      | 200     | 2C   |
| 8/24/16 | ESCAPE                | 430     | 659  |
| 8/24/16 | CAT II                | 200     | 3A   |
| 8/24/16 | ANIACKCHAK            | 200     | 3A   |
| 8/24/16 | GLACIER BAY           | 200     | 3A   |
| 8/24/16 | OUTER COAST           | 200     | 3A   |
| 8/25/16 | ALMAZ                 | 200     | 3A   |
| 8/25/16 | COOL RYDER            | 200     | 3A   |
| 8/25/16 | AK4385AG              | 200     | 3A   |
| 8/25/16 | JOINT EFFORT          | 200     | 3A   |
| 8/25/16 | AK4885L               | 200     | 2C   |
| 8/25/16 | AK1157P               | 200     | 2C   |
| 8/25/16 | AK2697AR              | 200     | 2C   |
| 8/25/16 | AK5550AD              | 200     | 2C   |
| 8/26/16 | AK8357M               | 200     | 3A   |
| 8/26/16 | ARCTIC ENVY           | 200     | 3A   |
| 8/26/16 | AK5935AM              | 200     | 3A   |
| 8/26/16 | SILVER SURFER         | 200     | 3A   |
| 8/26/16 | BIG KAHUNA            | 200     | 3A   |
| 8/26/16 | AK4896AR              | 200     | 3A   |
| 8/26/16 | N/A (No registration) | 200     | 3A   |
| 8/27/16 | AK7246J               | 200     | 3A   |
| 8/27/16 | SERENITY              | 200     | 3A   |
| 8/27/16 | OBSESSION             | 200     | 3A   |
| 8/27/16 | AK7950AK              | 200     | 3A   |
| 8/27/16 | AK4064N               | 200     | 3A   |



| DATE    | VSL NAME           | SPECIES | AREA |
|---------|--------------------|---------|------|
| 8/27/16 | AK9210AP           | 200     | 3A   |
| 8/27/16 | AK9330M            | 200     | 3A   |
| 8/27/16 | DONNA RAE          | 200     | 3A   |
| 8/27/16 | AK0685M            | 200     | 3A   |
| 8/27/16 | AK3585M            | 200     | 3A   |
| 8/27/16 | AK1520AP           | 200     | 3A   |
| 8/27/16 | AK7835P            | 200     | 3A   |
| 8/27/16 | AK3387N            | 200     | 2C   |
| 8/28/16 | AK1358H            | 200     | 3A   |
| 8/28/16 | AK7002AB           | 200     | 3A   |
| 8/28/16 | AK8319AJ           | 200     | 3A   |
| 8/28/16 | AK2306AN           | 200     | 3A   |
| 8/28/16 | AK1311L            | 200     | 3A   |
| 8/28/16 | AK0895K            | 200     | 3A   |
| 8/28/16 | AK2318AN           | 200     | 3A   |
| 8/28/16 | AK4133AA           | 200     | 2C   |
| 8/28/16 | SOZY C             | 200     | 2C   |
| 8/29/16 | AKUTAN             | 400     | 514  |
| 8/29/16 | ALLSTAR            | 710     | BS   |
| 8/30/16 | TRADITION          | 200     | 3A   |
| 8/30/16 | BEAR FORCE II      | 200     | 3A   |
| 8/30/16 | DIAMOND CAPE       | 200     | 3A   |
| 8/30/16 | CYNOSURE           | 200/710 | 4A   |
| 9/1/16  | TWO BEARS          | 200     | 4A   |
| 9/2/16  | AK8367P            | 200     | 2C   |
| 9/2/16  | SARAH E            | 410     | 659  |
| 9/2/16  | ORCA SONG          | 410     | 659  |
| 9/2/16  | MAJOR              | 200/710 | 3A   |
| 9/3/16  | AK4507AN           | 200     | 2C   |
| 9/3/16  | AK9561N            | 200     | 2C   |
| 9/3/16  | AK2268AM           | 200     | 2C   |
| 9/3/16  | AK9697AG           | 200     | 2C   |
| 9/3/16  | GOLDEN FLEECE      | 123     | 630  |
| 9/3/16  | VANGUARD           | 123     | 630  |
| 9/5/16  | KIMBER             | 710     | SE   |
| 9/5/16  | AK6879AK           | 200     | 2C   |
| 9/6/16  | SUNWARD            | 200     | 4C   |
| 9/7/16  | CAPE HORN          | 121     | 517  |
| 9/7/16  | SEATTLE ENTERPRISE | 270     | 517  |

| <b>DATE</b> | <b>VSL NAME</b>   | <b>SPECIES</b> | <b>AREA</b> |
|-------------|-------------------|----------------|-------------|
| 9/7/16      | NAVIGATOR         | 200            | 3A          |
| 9/8/16      | AK1605AR          | 200            | 3A          |
| 9/8/16      | AK8277AC          | 200            | 3A          |
| 9/8/16      | ORACLE            | 200            | 3A          |
| 9/8/16      | AK9714AG          | 200            | 3A          |
| 9/9/16      | COURAGEOUS        | 110            | 517         |
| 9/9/16      | PAVLOF            | 110            | 509         |
| 9/10/16     | SEAFREEZE AMERICA | 127            | 509         |
| 9/10/16     | AK8184AF          | 200            | 2C          |
| 9/10/16     | SIMATICO          | 200            | 2C          |
| 9/10/16     | AK7193AL          | 200            | 2C          |
| 9/10/16     | AK6039AR          | 200            | 2C          |
| 9/10/16     | PROGRESS          | 110            | 630         |
| 9/10/16     | U-RASCAL          | 200            | 3A          |
| 9/10/16     | INTANGIBLE        | 710            | CG          |
| 9/10/16     | DOG HOUSE         | 200            | 3A          |
| 9/10/16     | DALTONGANG        | 200            | 3A          |
| 9/11/16     | AK5743L           | 200            | 2C          |
| 9/11/16     | SARANA            | 200            | 2C          |
| 9/11/16     | AK5497AC          | 200            | 2C          |
| 9/11/16     | AK4256AF          | 200            | 2C          |
| 9/11/16     | AK3287AP          | 200            | 2C          |
| 9/11/16     | AK4369AR          | 200            | 2C          |
| 9/11/16     | AK7772AL          | 200            | 2C          |
| 9/11/16     | AK9826L           | 200            | 2C          |
| 9/11/16     | AK1858AD          | 200            | 2C          |
| 9/12/16     | ATLANTICO         | 110            | 517         |
| 9/12/16     | PACIFIC PRINCE    | 270            | 517         |
| 9/12/16     | SAINT PAUL        | 110            | 519         |

**Appendix C**  
June – September 2016  
Fisheries Boardings with Violations

| DATE    | UNIT             | VSL NAME        | SPECIES | NOTES AND DETAILS  |
|---------|------------------|-----------------|---------|--|
| 5/24/16 | ANACAPA          | AK873AA         | 410     | Written warning for illegible state numbers and no name on survival suit and life ring.    |
| 5/24/16 | STA<br>KETCHIKAN | AK5273M         | 200     | Three halibut steaks discovered onboard with no fishing permit. Expired VDS.               |
| 5/25/16 | ANACAPA          | SACHEM          | 410     | No name on type IV life ring buoy.   |
| 5/26/16 | SPAR             | LADY VIKING     | 110     | Type IV life ring buoy not serviceable.  |
| 5/26/16 | SPAR             | JAIME MARIE     | 110     | Expired survival craft   |
| 5/29/16 | STA<br>KETCHIKAN | AK2714AF        | 200     | Registration not onboard   |
| 5/29/16 | STA<br>KETCHIKAN | AK6006M         | 200     | Registration, Type IV PFD, and visual distress signals not onboard.                        |
| 6/2/16  | LIBERTY          | KNAPPA          | 450     | No strobe light on immersion suit.   |
| 6/2/16  | LIBERTY          | ENERGIZER       | 450     | Expired visual distress signals  |
| 6/3/16  | STA<br>KETCHIKAN | AK3913AE        | 200     | Voyage terminated for insufficient fire extinguishers and expired visual distress signals. |
| 6/9/16  | STA<br>KETCHIKAN | AK4638AE        | 200     | Registration not onboard   |
| 6/9/16  | STA<br>KETCHIKAN | AK5271AE        | 200     | Registration not onboard   |
| 6/12/16 | STA<br>KETCHIKAN | AK9397AG        | 200     | Registration, visual distress signals, and Type IV PFD not onboard.                        |
| 6/16/16 | STA<br>KETCHIKAN | AK3176AN        | NA      | Insufficient quantity of PFDs  |
| 6/16/16 | ANACAPA          | AK3000N         | 200     | Insufficient fire extinguishers  |
| 6/18/16 | STA<br>KETCHIKAN | HOPE            | NA      | Insufficient quantity of fire extinguishers  |
| 6/18/16 | STA<br>KETCHIKAN | CHASER          | 410     | No liferaft on board.  |
| 6/22/16 | TERRAPIN         | AK9407AN        | 200     | No Type IV PFD onboard   |
| 6/25/16 | STA<br>KETCHIKAN | ALASKAN<br>ROSE | NA      | Expired visual distress signals  |
| 6/25/16 | Sector Anchorage | MILLENIUM       | 420     | Life ring not serviceable  |
| 6/25/16 | Sector Anchorage | BAD DEAL        | 420     | No name on life ring or immersion suits  |

| DATE    | UNIT             | VSL NAME        | SPECIES | NOTES AND DETAILS  |
|---------|------------------|-----------------|---------|--|
| 6/26/16 | Sector Anchorage | SANDRA MARIE    | 420     | Expired visual distress signals, deteriorated immersion suits, and insufficient PFD  |
| 6/26/16 | Sector Anchorage | MISS NILA       | 420     | Expired visual distress signals  |
| 6/26/16 | Sector Anchorage | NELLIE ANN II   | 420     | Expired visual distress signals  |
| 6/26/16 | STA KETCHIKAN    | ADRIAN-S        | 200     | Registration not onboard   |
| 6/26/16 | STA JUNEAU       | AK1273N         | 200     | No Type IV PFD onboard   |
| 6/28/16 | Sector Anchorage | TEMPEST         | 420     | Expired visual distress signals, expired hydrostatic release on EPIRB, survival craft past due for inspection  |
| 6/28/16 | Sector Anchorage | DARCIE MICHELLE | 420     | Expired visual distress signals  |
| 6/28/16 | Sector Anchorage | PROFIT          | 420     | No injury placard or sound producing device onboard.   |
| 6/28/16 | Sector Anchorage | JANICE M        | 420     | Expired visual distress signals  |
| 7/1/16  | STA KETCHIKAN    | AK9391P         | 200     | Terminated voyage for no PFD, no sound-producing device, insufficient fire extinguisher, and expired visual distress signals. Subsistence halibut fishing without a license.     |
| 7/2/16  | STA KETCHIKAN    | AK2150          | 410     | Expired lights on immersion suit   |
| 7/3/16  | STA KETCHIKAN    | AK7815AM        | 200     | Terminated voyage for no PFD onboard, insufficient fire extinguisher and expired visual distress signals. Exceeded maximum allowable number of fishing hooks allowed per vessel. |
| 7/4/16  | STA KETCHIKAN    | NAOMI MARIE     | 410     | Registration not onboard and expired visual distress signals.  |
| 7/4/16  | STA KETCHIKAN    | AK1572AK        | 200     | Insufficient fire extinguisher   |
| 7/4/16  | STA KETCHIKAN    | DAGON           | 410     | Unserviceable life ring and expired visual distress signals.   |
| 7/7/16  | LIBERTY          | NORDIC FREEDOM  | 410     | No valid CFVS exam while operating beyond 3NM  |
| 7/7/16  | LIBERTY          | VIRGA           | 410     | No valid CFVS exam while operating beyond 3NM  |
| 7/7/16  | LIBERTY          | EAGLE SCOUT     | 200     | No documentation/state registration onboard  |

| DATE    | UNIT             | VSL NAME           | SPECIES | NOTES AND DETAILS   |
|---------|------------------|--------------------|---------|---|
| 7/8/16  | TERRAPIN         | ALLEY GIRL         | 200     | Registration not onboard and improper vessel numbering  |
| 7/15/16 | MUSTANG          | AK3503AR           | 200     | Inadequate fire extinguishers   |
| 7/15/16 | STA<br>KETCHIKAN | MT7510AW           | 200     | Registration and visual distress signals not onboard.   |
| 7/15/16 | STA<br>KETCHIKAN | AK9370AL           | 200     | Registration not onboard  |
| 7/15/16 | STA<br>KETCHIKAN | AK0002J            | 200     | Visual distress signals expired and garbage placard not onboard.                                    |
| 7/15/16 | STA JUNEAU       | BEAGLE             | 200     | Documentation not onboard.  |
| 7/16/16 | STA JUNEAU       | COMPANERA          | 200     | Expired visual distress signals.  |
| 7/17/16 | MUSTANG          | CAROLYN            | 200     | Improper documentation  |
| 7/22/16 | STA JUNEAU       | AK2423AW           | 200     | No bracket for fire extinguisher.   |
| 7/24/16 | STA JUNEAU       | THE DASH           | 200     | Overboard discharge valve for Marine Sanitation Device not secured, and no garbage placard onboard. |
| 7/24/16 | STA JUNEAU       | AK8083AD           | 200     | Type IV throwable not serviceable and vessel markings not legible.                                  |
| 7/24/16 | STA<br>KETCHIKAN | AK1468N            | 200     | Registration not onboard  |
| 7/27/16 | LIBERTY          | DRIFTER            | 200     | No merchant mariner credentials   |
| 7/28/16 | LIBERTY          | RANGER             | 200     | No sound producing device, and inadequate amount of fire extinguishers                              |
| 7/28/16 | LIBERTY          | ALASKAN<br>HUNTER  | 200     | Failure to carry alcohol strips and oil pollution placard.  |
| 7/28/16 | ALEX HALEY       | CONTENDER          | 200     | Discard of Pacific cod and rockfish with IFQ species onboard.                                       |
| 8/3/16  | ANACAPA          | AK4696AN           | 200     | Failure to display AK numbering on vessel.  |
| 8/3/16  | ANACAPA          | HOLY ROLLER        | 200     | Failure to make log entry within required time period.  |
| 8/4/16  | CHANDELEUR       | STAR OF<br>ZEBULON | 440     | Inadequate number of fire extinguishers and expired hydrostatic release on EPIRB.                   |
| 8/5/16  | STA<br>KETCHIKAN | AK8895L            | 200     | Registration not onboard  |
| 8/6/16  | STA JUNEAU       | AK0335P            | 200     | Registration not onboard  |
| 8/6/16  | STA JUNEAU       | AK0910N            | 200     | Type IV life ring buoy not onboard  |
| 8/6/16  | STA<br>KETCHIKAN | AK5634AF           | 200     | Registration not onboard  |

| DATE    | UNIT          | VSL NAME           | SPECIES | NOTES AND DETAILS   |
|---------|---------------|--------------------|---------|---|
| 8/8/16  | MUSTANG       | AK7238AP           | 200     | Voyage terminated for inadequate fire extinguishers. Registration not onboard.                                      |
| 8/9/16  | MUSTANG       | SKOOKUM II         | 200     | Visual distress signals and documentation not onboard.  |
| 8/9/16  | SECTOR JUNEAU | CAROLINA SPORTSMAN | 200     | Inadequate number of fire extinguishers onboard, expired registration, and no garbage placard.                      |
| 8/9/16  | SECTOR JUNEAU | MR TY              | 200     | Expired visual distress signals   |
| 8/9/16  | SECTOR JUNEAU | RANGER             | 200     | Inadequate number of fire extinguishers onboard.  |
| 8/10/16 | STA JUNEAU    | AK8331AL           | 200     | Unserviceable Type IV PFD   |
| 8/10/16 | SECTOR JUNEAU | AK5622AF           | 200     | Inadequate number of fire extinguishers onboard and registration not onboard.                                       |
| 8/10/16 | SECTOR JUNEAU | FISHING ADDICTION  | 200     | Joint USCG/NOAA OLE Boarding. NOAA OLE issued warning for failure to log catch for previous day's fishing activity. |
| 8/10/16 | SECTOR JUNEAU | ELEGANT RENDEVOUS  | 200     | Joint USCG/NOAA OLE Boarding. NOAA OLE issued warning for mutilated halibut onboard. No documentation onboard.      |
| 8/11/16 | SECTOR JUNEAU | SAMSARRA           | 200     | Joint USCG /AWT boarding. Failure to complete logbook as required.  |
| 8/11/16 | SWORDFISH     | AK3153H            | 200     | Voyage terminated for inadequate PFDs.  |
| 8/13/16 | STA KETCHIKAN | AK4489AM           | 200     | Voyage terminated. Appropriate size PFD's for passengers not onboard.   |
| 8/16/16 | CHANDELEUR    | VENTURESS          | 200     | Anchoring within 3NM no entry zone.   |
| 8/17/16 | MUSTANG       | FUELISH PLEASURE   | 200     | Voyage terminated for inadequate fire extinguishers.  |
| 8/18/16 | MUSTANG       | THOMASEA           | 200     | Inadequate fire extinguishers.  |
| 8/18/16 | MUSTANG       | AK6059AL           | 200     | Expired visual distress signals   |
| 8/20/16 | STA JUNEAU    | AK8119AM           | 200     | Expired visual distress signals and no documentation onboard.   |
| 8/22/16 | SYCAMORE      | GOOD LUCK          | 430/200 | No life ring buoys onboard. Issued warning for fishing for halibut without current SHARC.                           |
| 8/23/16 | SYCAMORE      | JIMANI             | 430     | Inadequate visual distress signals  |

| DATE    | UNIT             | VSL NAME              | SPECIES | NOTES AND DETAILS  |
|---------|------------------|-----------------------|---------|--|
| 8/23/16 | ANACAPA          | BLACK DOG             | 430     | Expired visual distress signals, missing strobe light on immersion suit, and expired registration.   |
| 8/24/16 | Sector Anchorage | KACHEMAK KING         | 200     | Registration not onboard.  |
| 8/25/16 | Sector Anchorage | AK5540M               | 200     | Expired visual distress signals.   |
| 8/26/16 | Sector Anchorage | N/A (No registration) | 200     | No registration and visual distress signals not onboard.   |
| 8/27/16 | Sector Anchorage | AK6118AG              | 200     | Registration not onboard.  |
| 8/27/16 | STA KETCHIKAN    | AK9491M               | 200     | Visual distress signals and registration not onboard.  |
| 8/28/16 | SPAR             | AKUTAN                | NA      | Voyage terminated by Captain of the Port for operating without a licensed master onboard. Expired survival craft, unsecured marine sanitation device, expired fire extinguishers, and expired visual distress signals. |
| 8/28/16 | SWORDFISH        | AK9197N               | 200     | Type IV PFD, sound producing device, and registration not onboard.   |
| 8/29/16 | ANACAPA          | ROULETTE              | 430     | Operating without a CFVS decal beyond 3NM.   |
| 9/2/16  | STA KETCHIKAN    | AK3760AJ              | 200     | Type IV throwable not onboard  |
| 9/3/16  | STA KETCHIKAN    | AK7789AP              | 200     | Visual distress signals, Type IV PFD, and registration not onboard.  |
| 9/3/16  | STA KETCHIKAN    | AK8726L               | 410     | Inadequate number of immersion suits and expired visual distress signals.  |
| 9/5/16  | STA KETCHIKAN    | AK2096J               | 200     | Expired registration.  |
| 9/5/16  | STA KETCHIKAN    | AK3806AN              | 200     | Expired registration.  |
| 9/10/16 | STA KETCHIKAN    | AK6750AK              | 200     | Voyage terminated for insufficient number of PFDs, visual distress signals, sound producing device, and registration not onboard.  |
| 9/10/16 | CHANDELEUR       | NAKNEK LEADER         | 200     | Expired visual distress signals and expired hydrostatic release on EPIRB.  |
| 9/10/16 | CHANDELEUR       | AK6210AL              | 200     | Unserviceable PFD and registration not onboard.  |