



17th Coast Guard District Enforcement Report October – November 2019

B6 Coast Guard District Enforcement Report
DECEMBER 2019



LCDR Yvonne Yang
04 December 2019



Search and Rescue October – November 2019

5 F/V SAR Cases

2 Lives Saved

0 Lives Lost

1 Vessels Lost

4 Voyage Terminations

14 Safety Violations

Common Problems:

Expired VDS

Expired hydrostatic releases

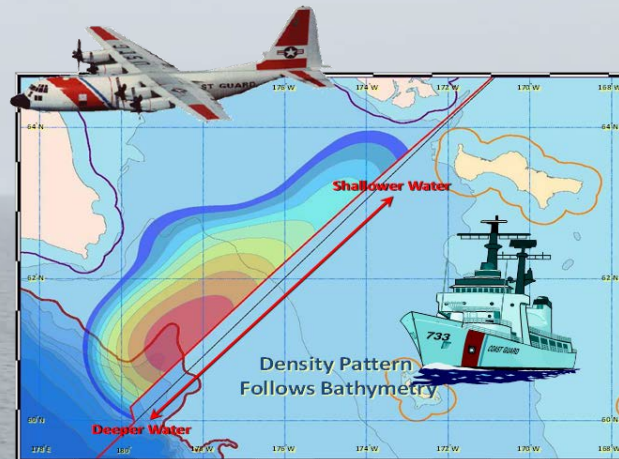
Expired Life raft



Maritime Boundary Line October – November 2019

Activity within 20NM
of US/RS MBL before
20 November:

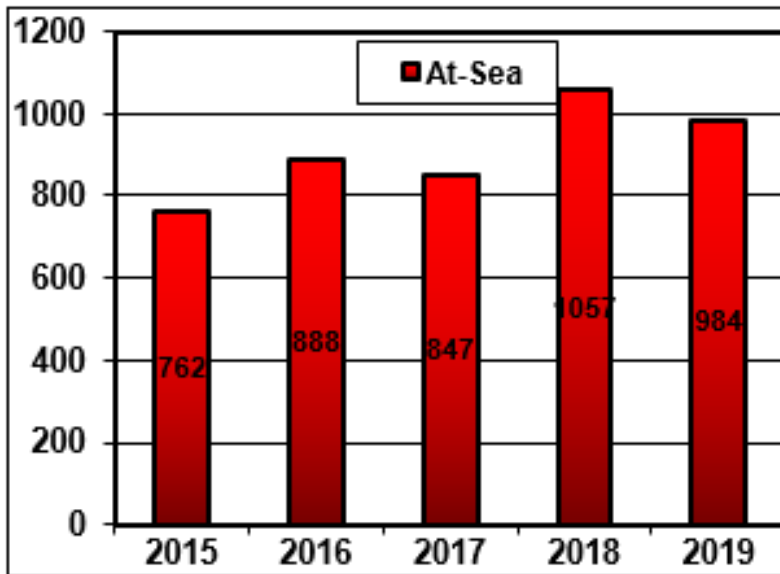
- 2 vessels daily average
- 3 MBL flights by C-130



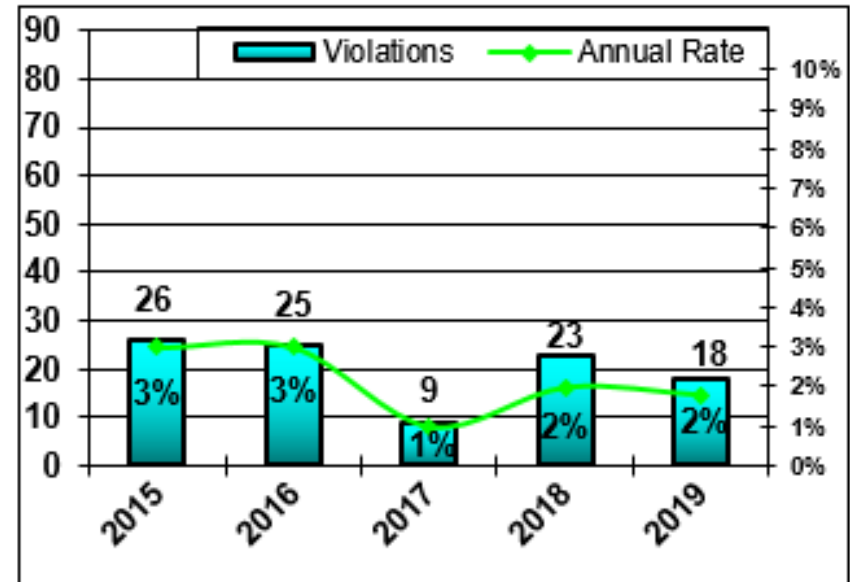


Fishing Vessel Boardings & Fisheries Violations

Vessel Boardings



Vessels With Violations





Halibut & Sablefish Enforcement October – November 2019

IFQ Halibut & Sablefish

- 11 boardings of IFQ halibut vessels
- 7 boardings of IFQ sablefish vessels
- 7 boardings of IFQ halibut & sablefish vessels
- 6 fisheries violations

Charter & Recreational/Subsistence Halibut

- 3 boardings of Recreational/Subsistence halibut vessels
- 0 fisheries violations and 0 safety terminations
- 1 boardings of Charter halibut vessels
- 0 fisheries violations and 0 safety violations





Crab Fisheries October – November 2019

**1 EAG Boarding
2 BBRK Boardings**

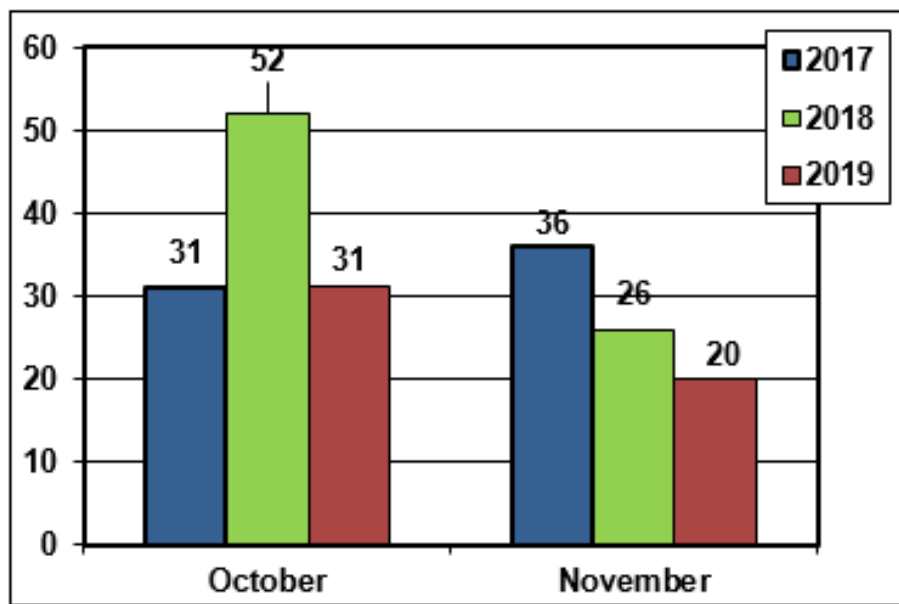
**USCG H-60 helicopter
deployed to Cold Bay
15OCT-08NOV**



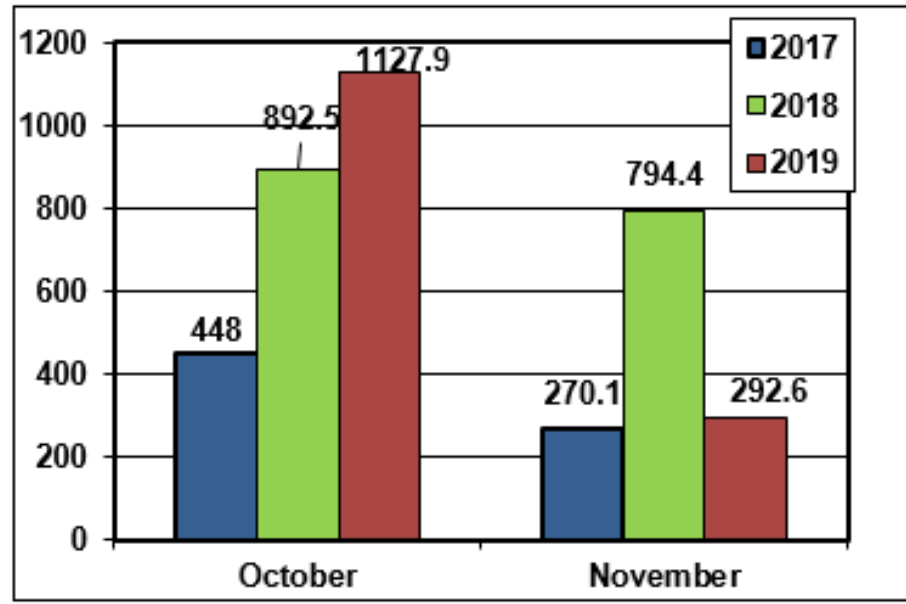


Cutter Resource Allocation October – November 2019

Major Cutter Days



Patrol Boat Hours





Aircraft Resource Allocation October – November 2019

133 H-60/65 Hours
40 HC-130 Hours





SEVENTEENTH DISTRICT

Coast Guard District 17



Migration of Fishing Activity Challenges USCG Capability

Primary CG Concerns:

- SAR/MRO
- Enforcement
- Arctic Closed Area

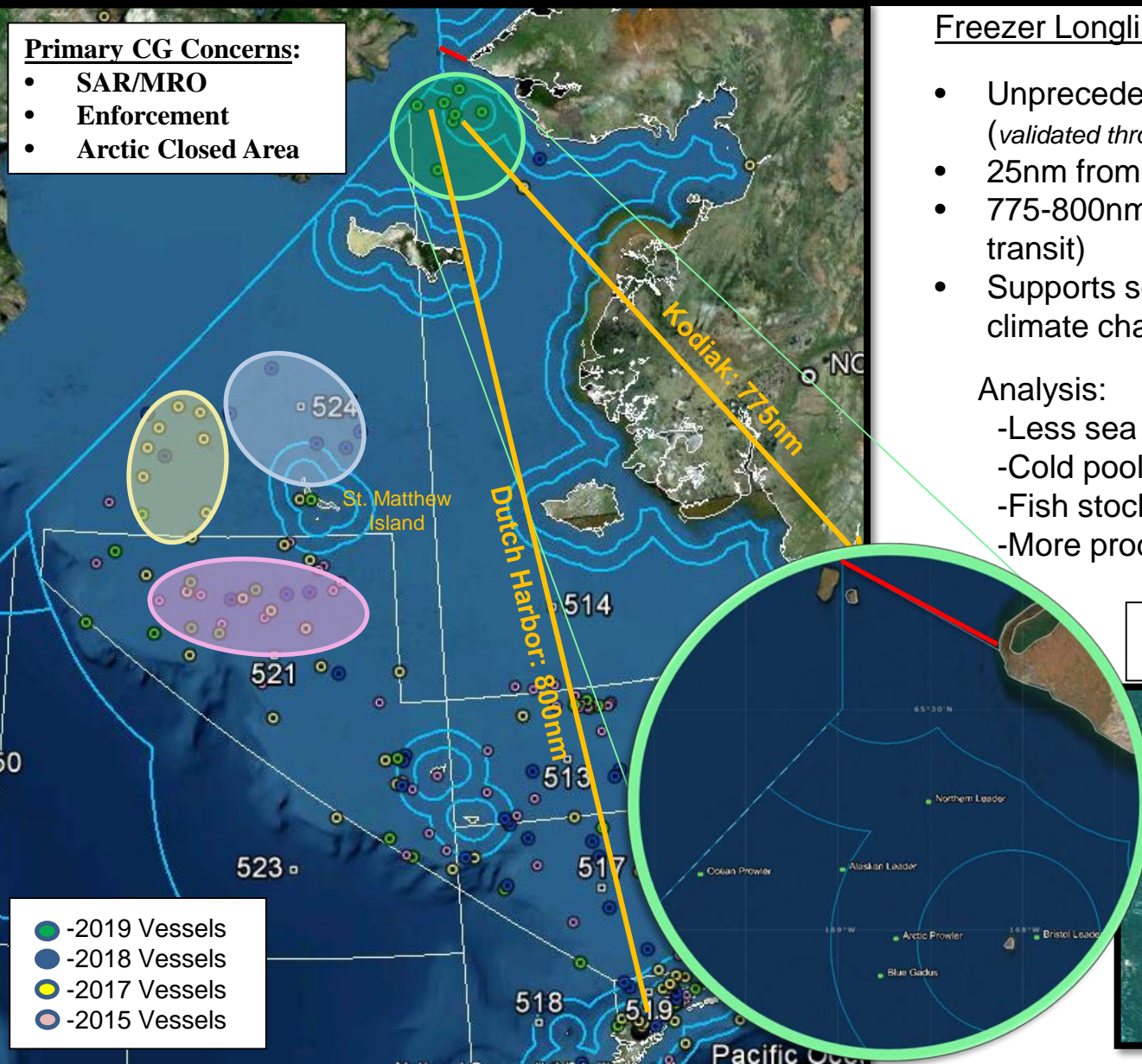
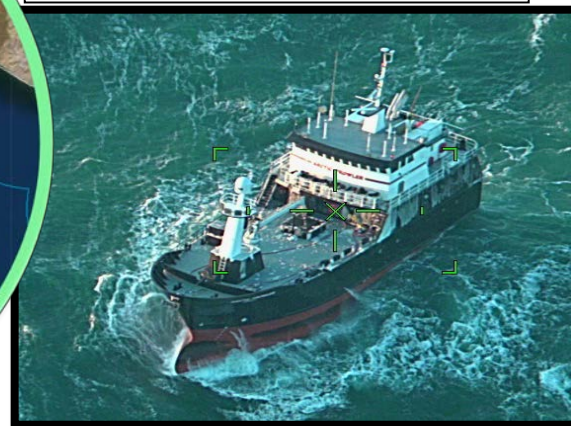
Freezer Longline Fleet: Targeting Pacific Cod

- Unprecedented Northern Concentration (*validated through USCG, NOAA SF, Arctic Biologist*)
- 25nm from Arctic Closed Area
- 775-800nm from SAR/LE Support (2 day cutter transit)
- Supports scientific research on the effects of climate change

Analysis:

- Less sea ice
- Cold pool shrinking in Bering Sea
- Fish stocks moving north
- More productive fishing

C-130 Flight: 15 Nov
F/V Arctic Prowler-119ft 20 POB



- -2019 Vessels
- -2018 Vessels
- -2017 Vessels
- -2015 Vessels



Questions?

