



# Catch Accounting of Trawl- Bycaught Red King Crab (*Paralithodes camtschaticus*) in the Bering Sea

Cory Lescher  
clescher@alaskapacific.edu  
Alaska Pacific University  
FAST Lab

Thesis Advisor: Dr. Brad Harris  
Committee Members: Dr. Noelle Yochum and Dr. Jason Gasper,  
Industry Collaborator: John Gauvin



# Motivation

- 80% assumed discard mortality
- RKC vitality metrics on-deck vs in factory

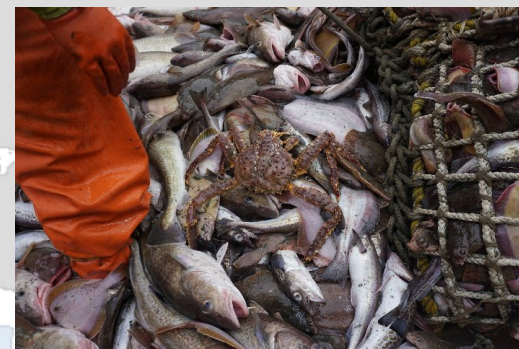
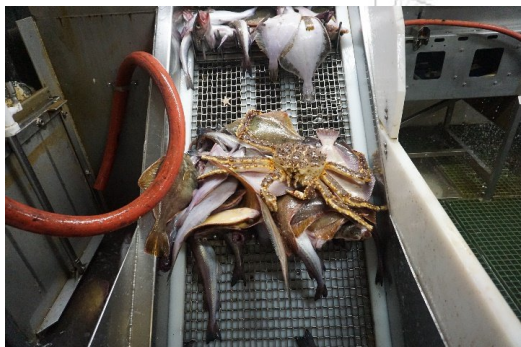


# Exemptions Requested:

National Standard 9 - Bycatch (50 CFR 600.350 (d) and 50 CFR 679.21(a)(2)(ii))

Whole-Haul RKC in Factory

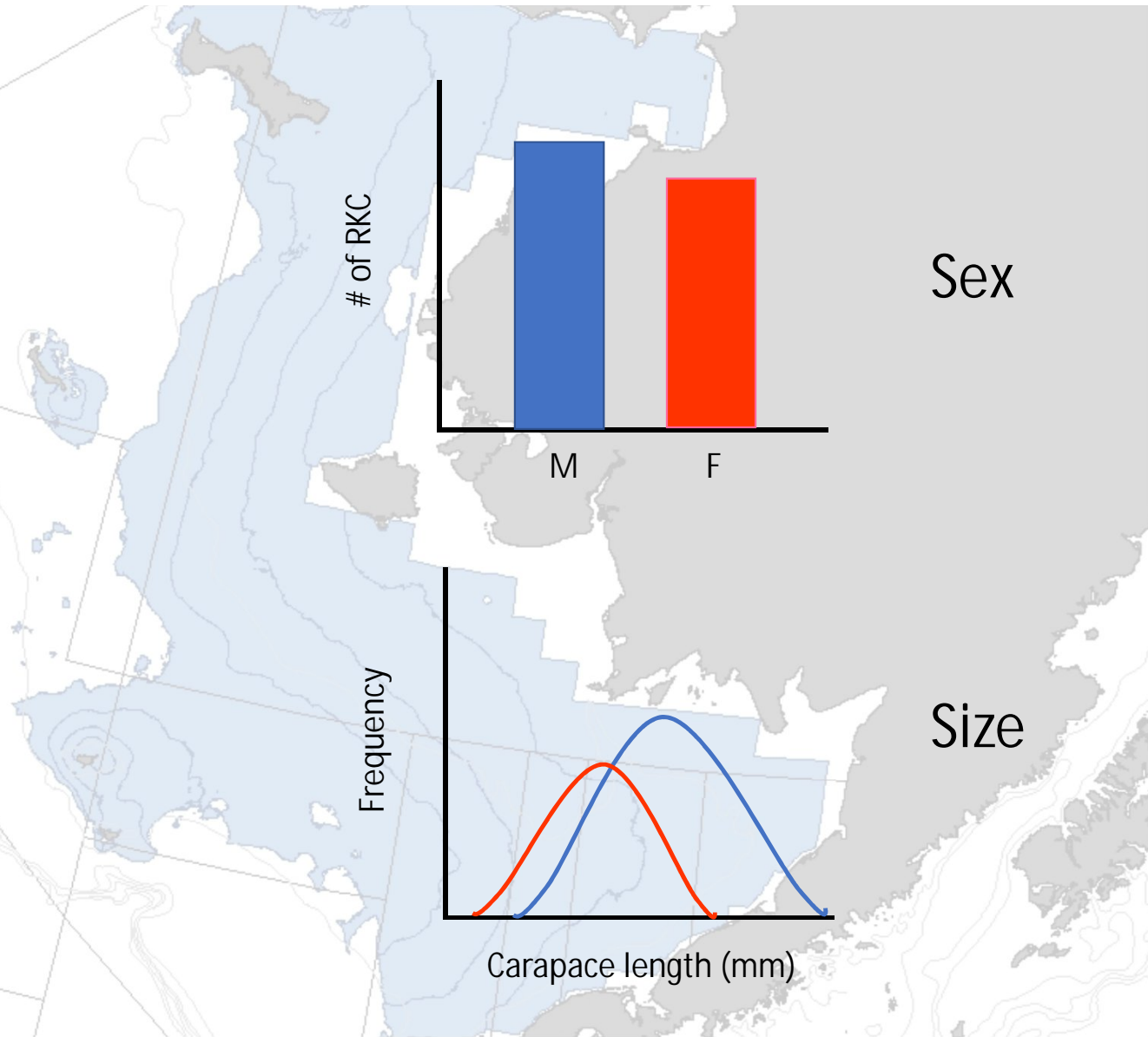
Viability Study on Deck



No additional crab PSC or changes to observer sampling

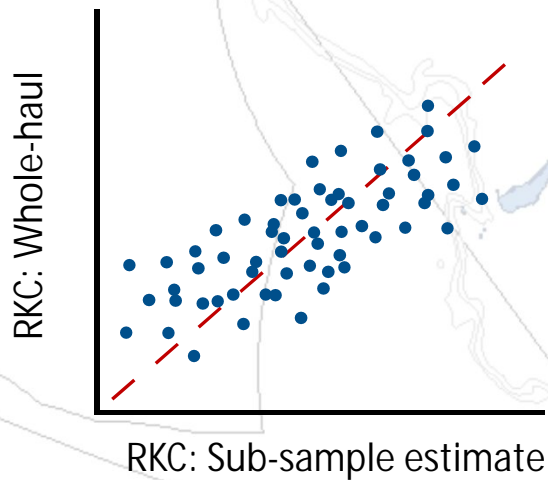
# Objective 1

- Collect RKC biological catch composition data
  - Sex
  - Size
  - Shell condition
  - Clutch assessment (females)
  - Vitality metrics

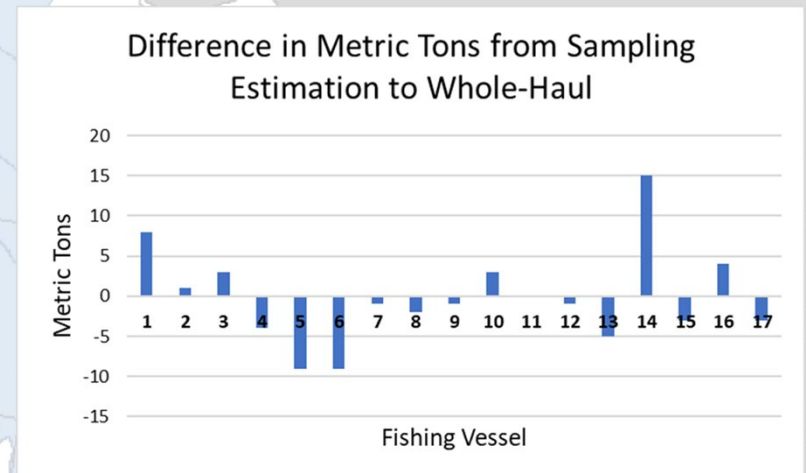
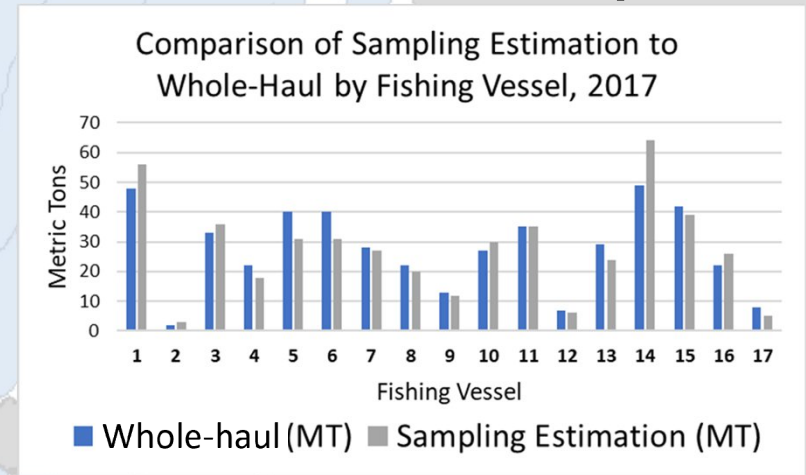


## Objective 2

- Whole-haul vs sub-sample estimates
- Analyze RKC distribution



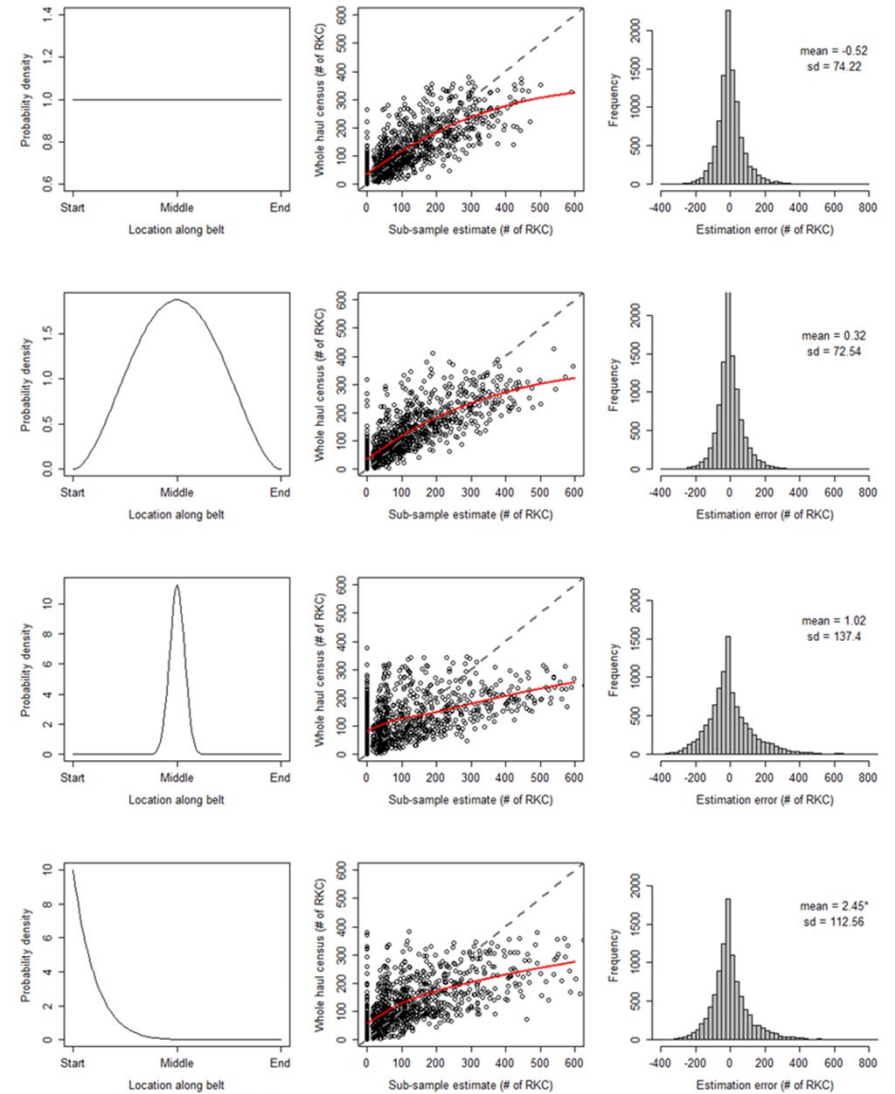
## Halibut Example



2017 Whole-haul = 580 metric tons  
Sampling estimation = 575 metric tons

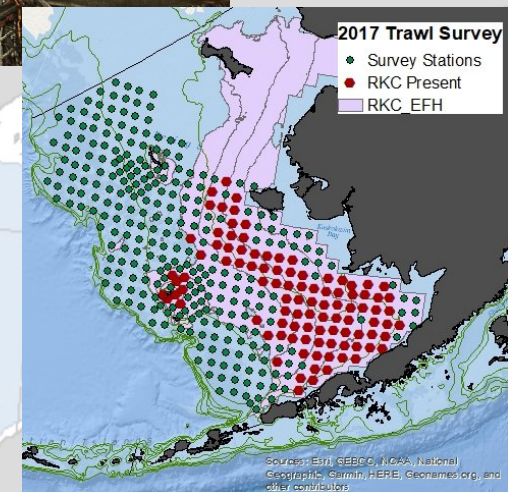
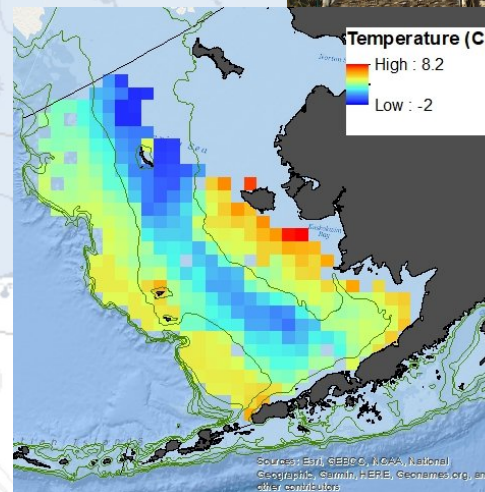
# Objective 2

- Whole-haul vs sub-sample estimates
- Analyze RKC distribution



# Objective 3

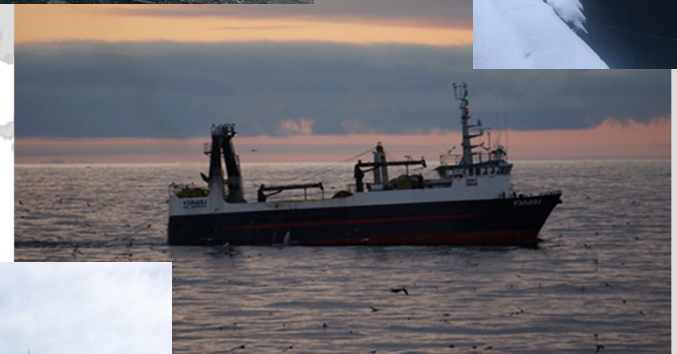
- Haul characteristics
  - Haul time and location
  - Tow duration
  - Fishing depth
  - Vessel's towing speed
  - Target catch
  - Total catch (haul) weight
    - CPUE
- Environmental variables
  - Seafloor water temperature
  - Ambient air temperature (obj 4)





# Objectives 1-3

- Haul-level
  - Trip-level
    - Vessel-level
      - Fleet-level



# Objective 4

- 72-hour on-deck vitality observation
  - Injury, reflex impairment
  - On-deck vitality assessment
  - In-factory vitality assessment
  - RKC biological data
  - Haul characteristics
  - Metrics to predict mortality



# Summary

- RKC Whole-haul accounting
  - Important dynamics in the relationship between trawl-caught target and PSC species
  - More informed use of data generated via observer sampling
  - Potential improvements in PSC rate estimation for NMFS and industry management for crabs and other species
- Viability pilot study
  - Enhance our understanding of the variables that influence discard mortality and metrics that can be used to evaluate discard survival
  - Better field and laboratory studies in the future



Sunrise over the Bering sea and Aleutian islands.

Thanks for your time  
Questions/comments?

