

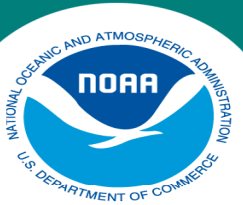
*Science, Service, Stewardship*



# BSAI Octopus 2016

M. Elizabeth Conners, Kerim Aydin, Christina Conrath  
Alaska Fisheries Science Center

**NOAA  
FISHERY  
SERVICE**

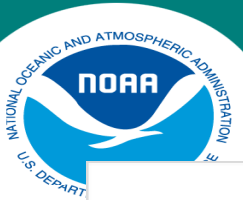


## BSAI Octopus

The 2016 survey biomass estimates from the EBS shelf survey, EBS slope survey, and AI survey were all at or near the highest observed; consistent with 2015 GOA survey. Steady upward trend in shelf survey index from 2013-2015.

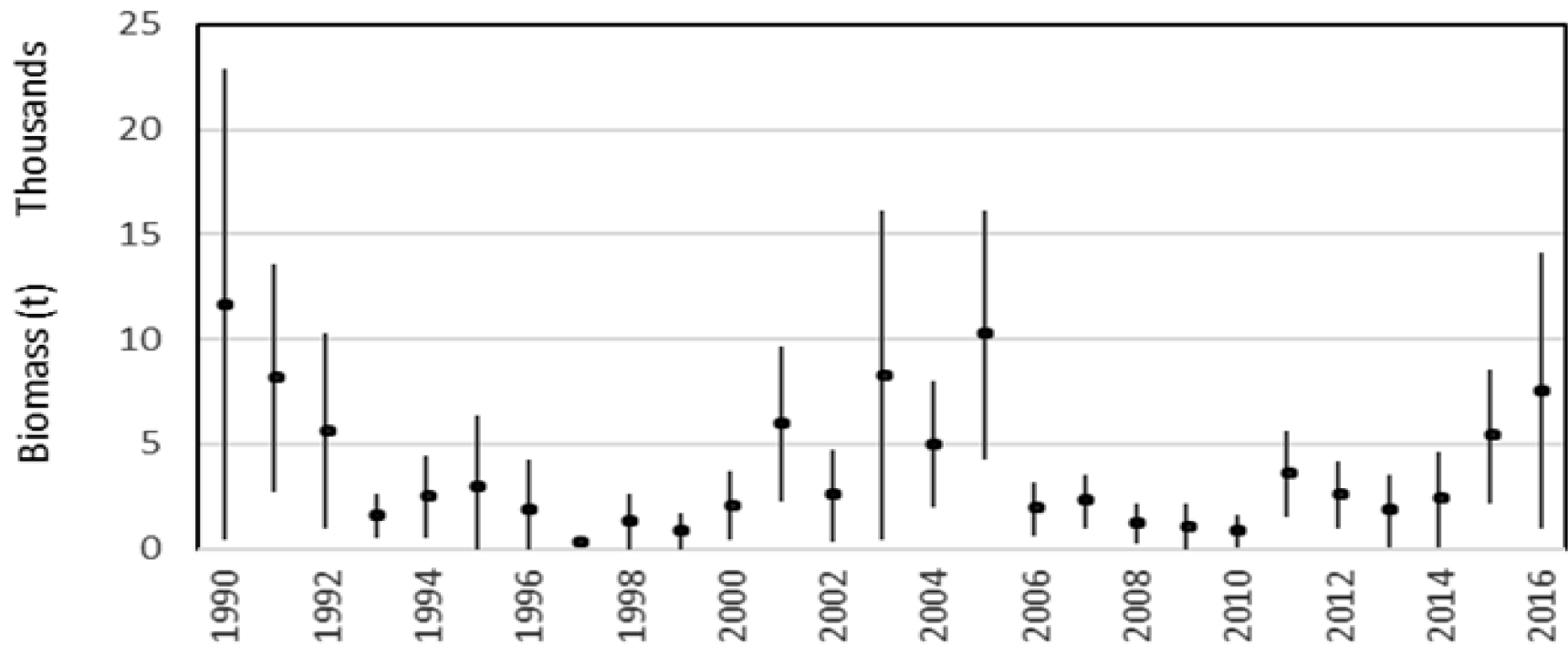
2014 - 2016 Catch rates stable at ~ 430 t; retention only 17%

Tier 6 alternative Consumption method updated (from 2011) with new Pacific cod stomach data through 2015. Recent increases in both cod numbers and percentage octopus in diet give increasing trend in annual consumption estimates 2009-2015.



## BSAI Octopus – Survey Biomass Up

Octopus Biomass Estimates  
Bering Sea Shelf Survey





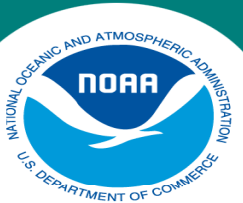
# New Cod Stomach Samples

Year	Stomach Samples
1984	636
1985	952
1986	1,338
1987	747
1988	551
1989	1,662
1990	1,121
1991	1,546
1992	1,876
1993	2,303
1994	2,381
1995	2,395
1996	1,314
1997	1,155
1998	1,262

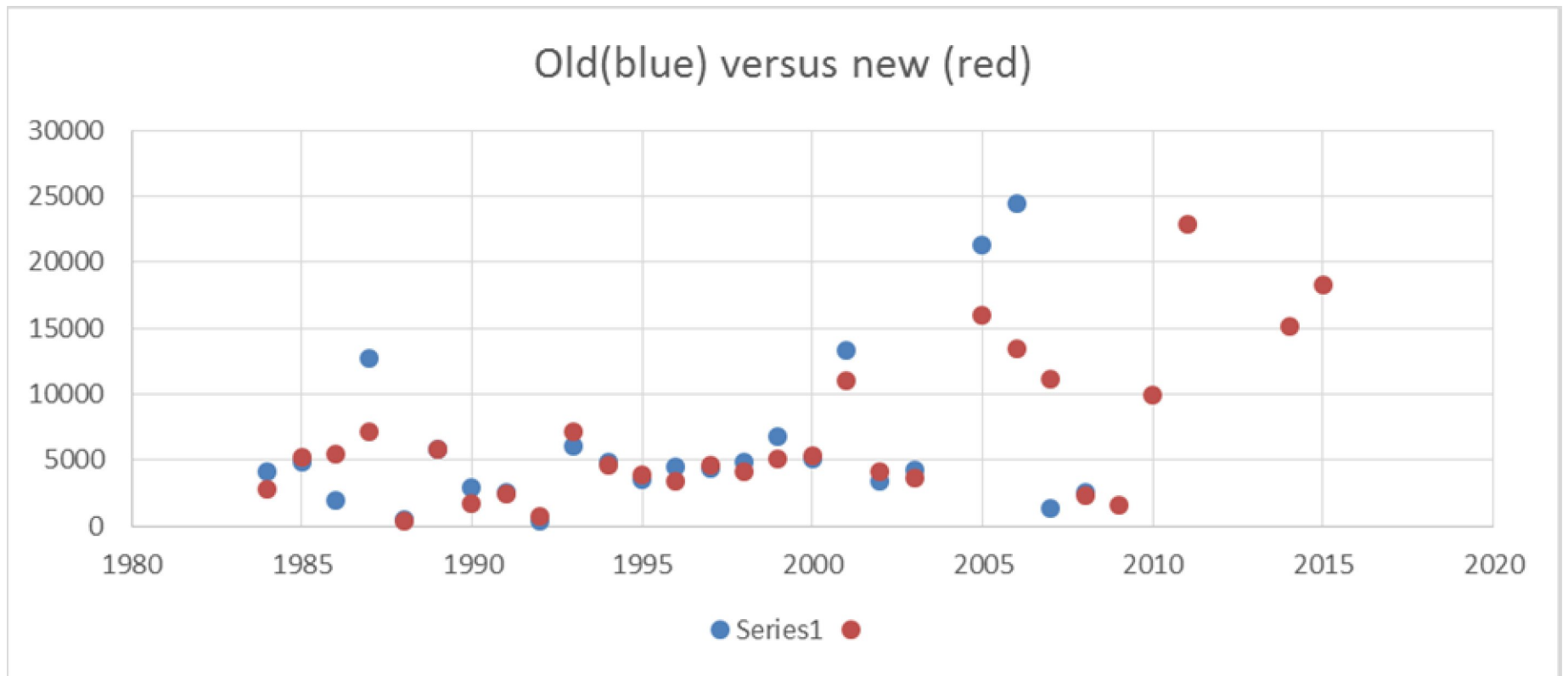
Year	Stomach Samples
1999	1,049
2000	1,101
2001	1,304
2002	1,334
2003	1,770
<b>2005</b>	<b>408</b>
<b>2006</b>	<b>671</b>
<b>2007</b>	<b>578</b>
2008	1,204
<b>2009</b>	<b>1,312</b>
<b>2010</b>	<b>1,169</b>
<b>2011</b>	<b>1,511</b>
<b>2014</b>	<b>1,617</b>
<b>2015</b>	<b>1,893</b>

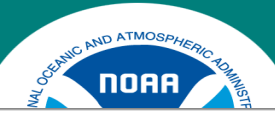
2013 and 2013  
Not yet  
processed



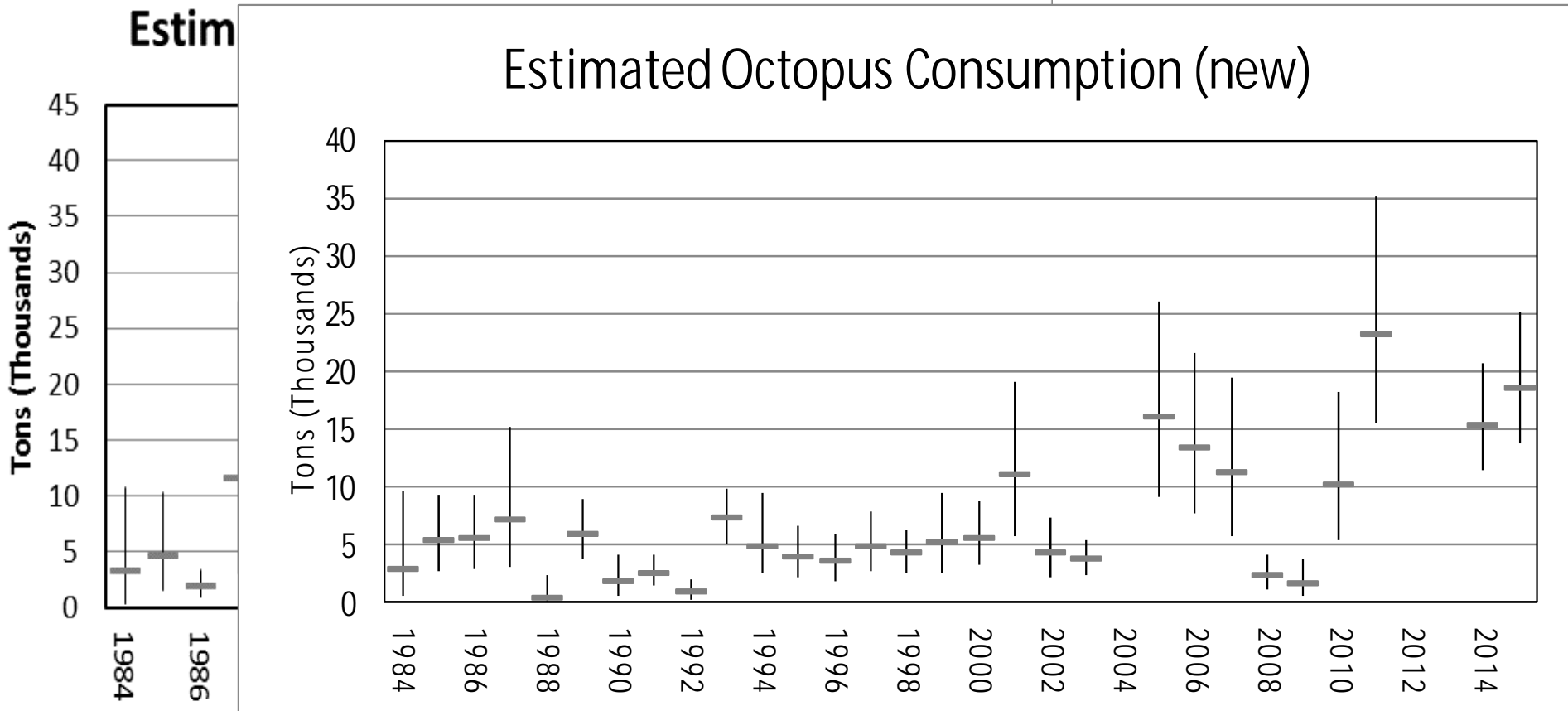


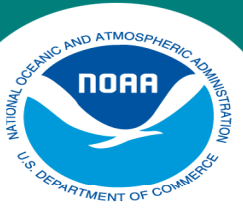
## Revised Consumption Estimates



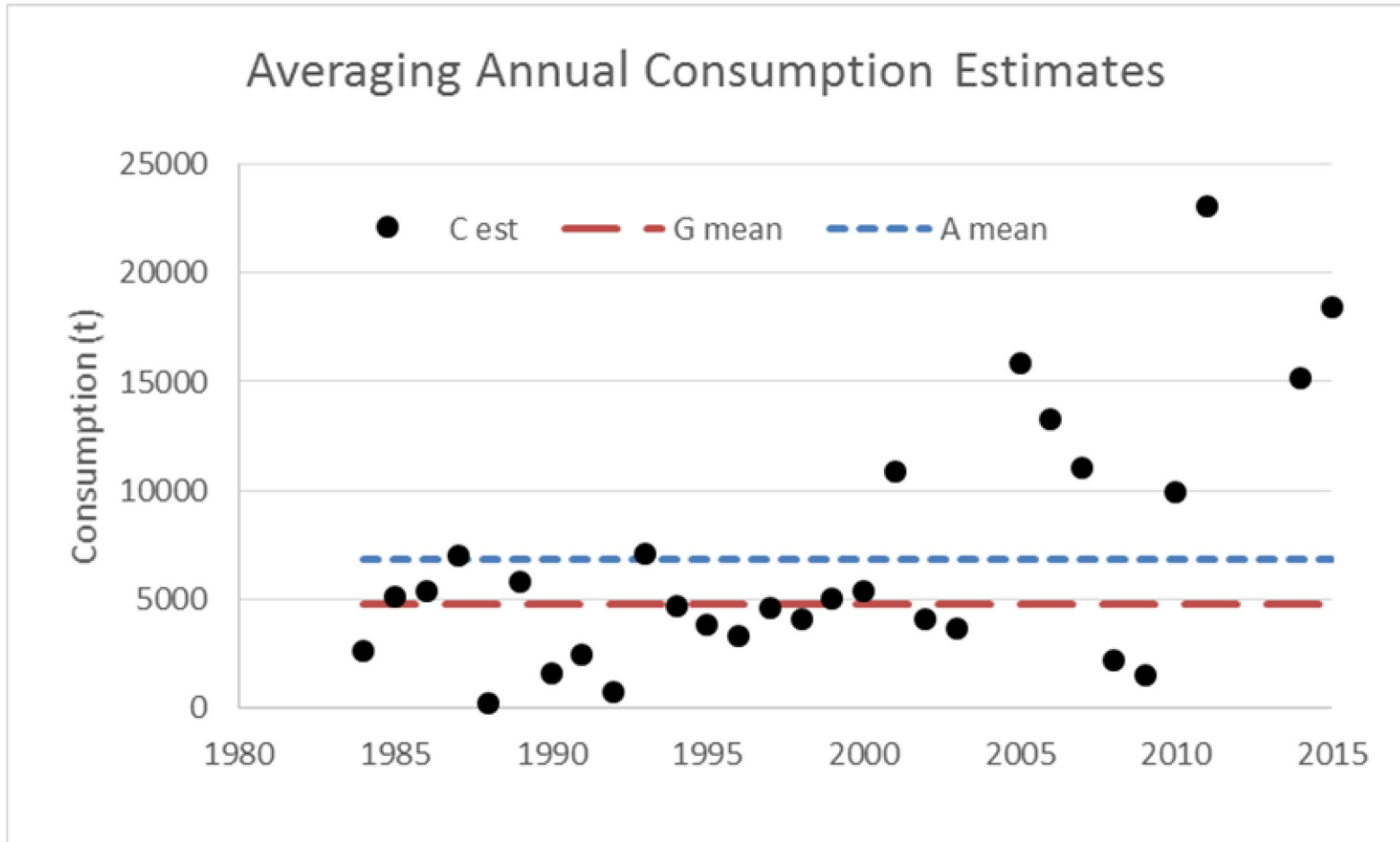


## BSAI Octopus - New Consumption Estimate





## Consumption estimates - different averages





## BSAI Octopus

Survey Biomass estimate: shelf + slope + AI: **13,608 t**

Brewer Biomass estimate (Unimak Pass area only): **20,697 t**

Average Consumption estimate 1984-2015: 4,769 t

Recommended 2017/2018 OFL and ABC:

- **OFL 4,769 t** (increased from 2016 value of 3,425 t)
- **ABC 3,546 t** (increase from 2016 value of 2,589 t)