

# BSAI yellowfin sole proposed update

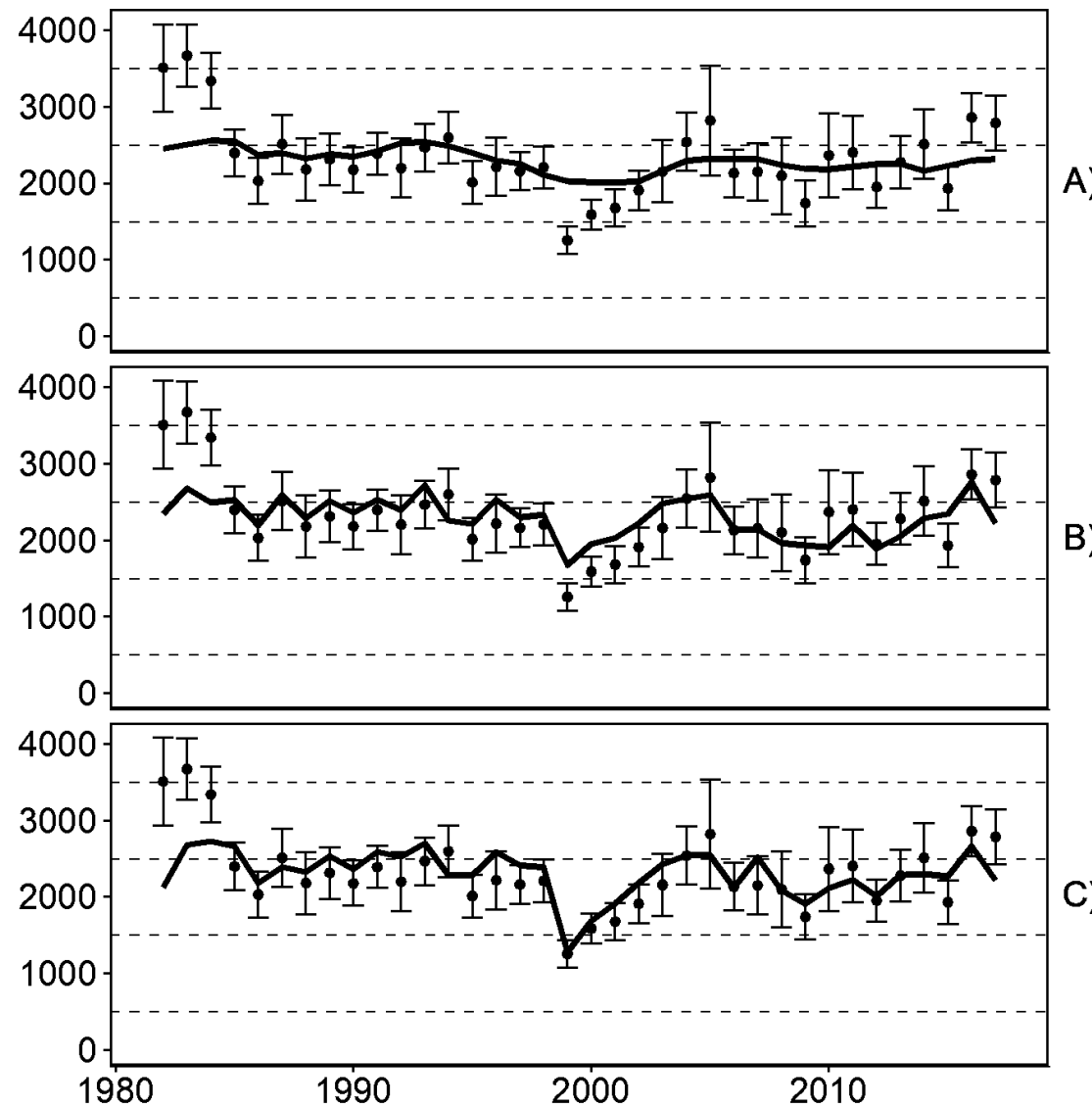
# Yellowfin sole survey catchability

- ▶ Propose adding survey start date and it's interaction with temperature to the catchability equation as an alternative model

- ▶  $q = e^{-a + \beta T + \gamma S + \mu T:S}$

- ▶ Where S is survey start date and T:S is interaction term

Bottom trawl survey biomass index



**Fit to survey  
biomass**

# Female spawning biomass from 4 models

