

Appendix E to the Environmental Assessment for Amendment to the Fishery Management Plan for the Salmon Fisheries in the EEZ off Alaska

Proposed amendment to the Salmon FMP – amendment text for updating EFH description and non-fishing impacts to EFH (EFH Omnibus Amendment)

Make the following changes to Appendix A of the Fishery Management Plan for the Salmon Fisheries in the EEZ off Alaska. When edits to existing sections are proposed, words indicated with ~~strikeout~~ (e.g., ~~strikeout~~) should be deleted from the FMP, and words that are underlined (e.g., underlined) should be inserted into the FMP. Instructions are italicized and highlighted.

1. In Chapter 1, Section 1.1, History of the FMP, insert the following description of this amendment in sequential order:

Amendment [insert number]

On [insert date], the Secretary of Commerce approved Amendment [insert number] [insert Federal Register document and date]. In [month year], the Council recommended Amendment [insert number] as part of its 5-year Review of essential fish habitat (EFH). Amendment [insert number] revises Appendix A to update the description of EFH for all five species of Pacific salmon by replacing the replace the salmon marine life history stage distribution maps from Echave et al. 2012 with the salmon marine life history stage EFH maps from Echave et al. 2012.

2. In Table 1, Amendments to the Salmon FMP, add a row to the end of the table and insert the following information under the corresponding fields in the table:

Amendment	Date	Pertinent Functions(s)	Federal Register document
<i>Amendment [insert number] Essential Fish Habitat</i>	<i>[insert year]</i>	<ul style="list-style-type: none">• Updates EFH content, descriptions, and maps based on the 5-year Review	<i>[insert FR document]</i>

3. In Appendix A, Section A.3.1 Descriptions and Maps of Essential Fish Habitat, replace the salmon marine life history stage distribution maps from Echave et al. 2012 with the salmon marine life history stage essential fish habitat (EFH) maps from Echave et al. 2012 and update the text captions for these map figures (10, 11, 18, 19, 20, 27, 28, 29, 36, 37, 38, 45, and 46).

Figure 10 **EFH Distribution for Marine Juvenile Pink Salmon** **Pink salmon juvenile marine life history stage**
EFH map

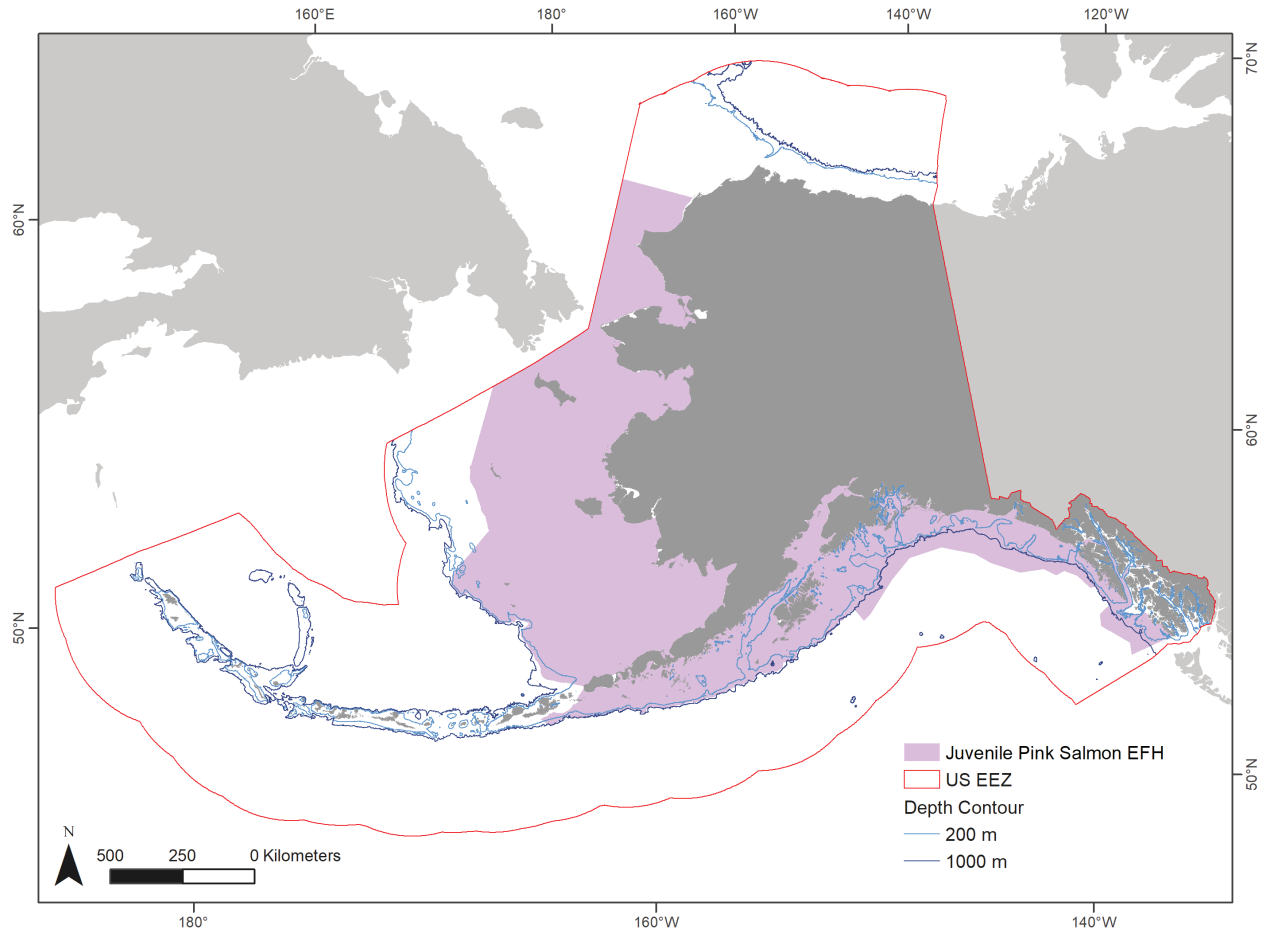


Figure 11 EFH Distribution for Marine Immature and Mature Pink Salmon Pink salmon mature marine life history stage EFH map

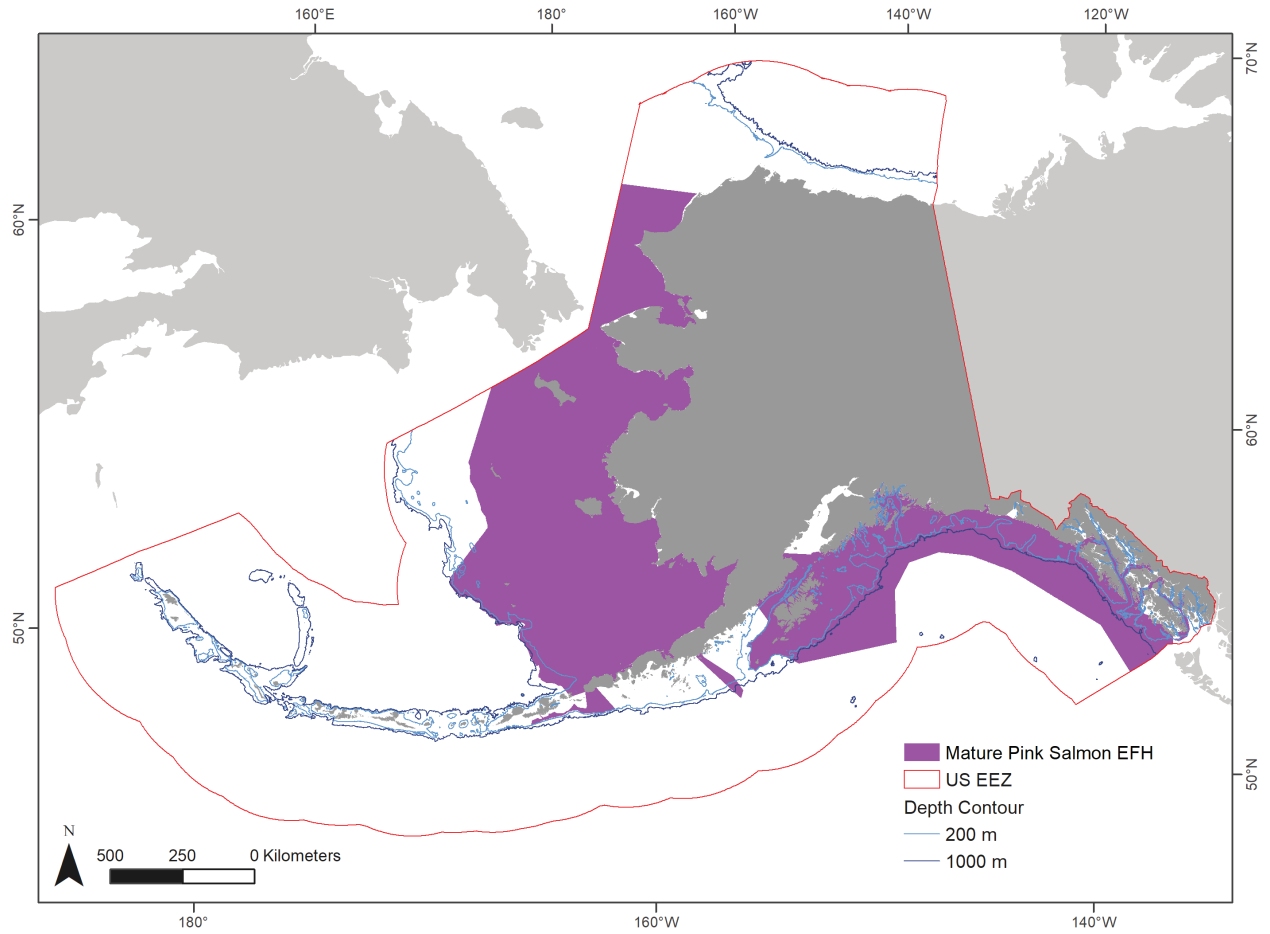


Figure 18 **EFH Distribution for Marine Juvenile Chum Salmon** **Chum salmon juvenile marine life history stage EFH map**

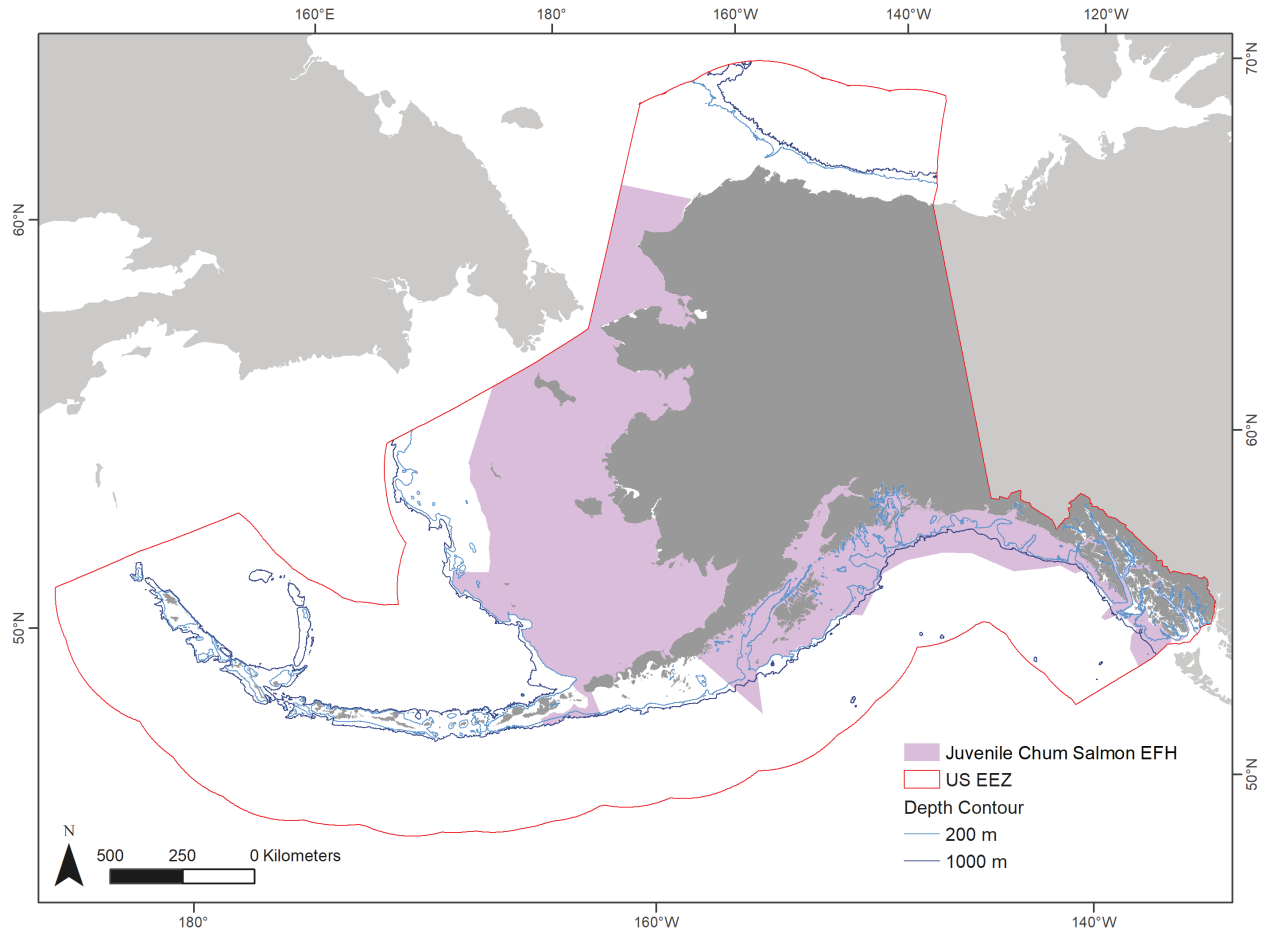


Figure 19 **EFH Distribution for Marine Immature Chum Salmon. Chum salmon immature marine life history stage EFH map**

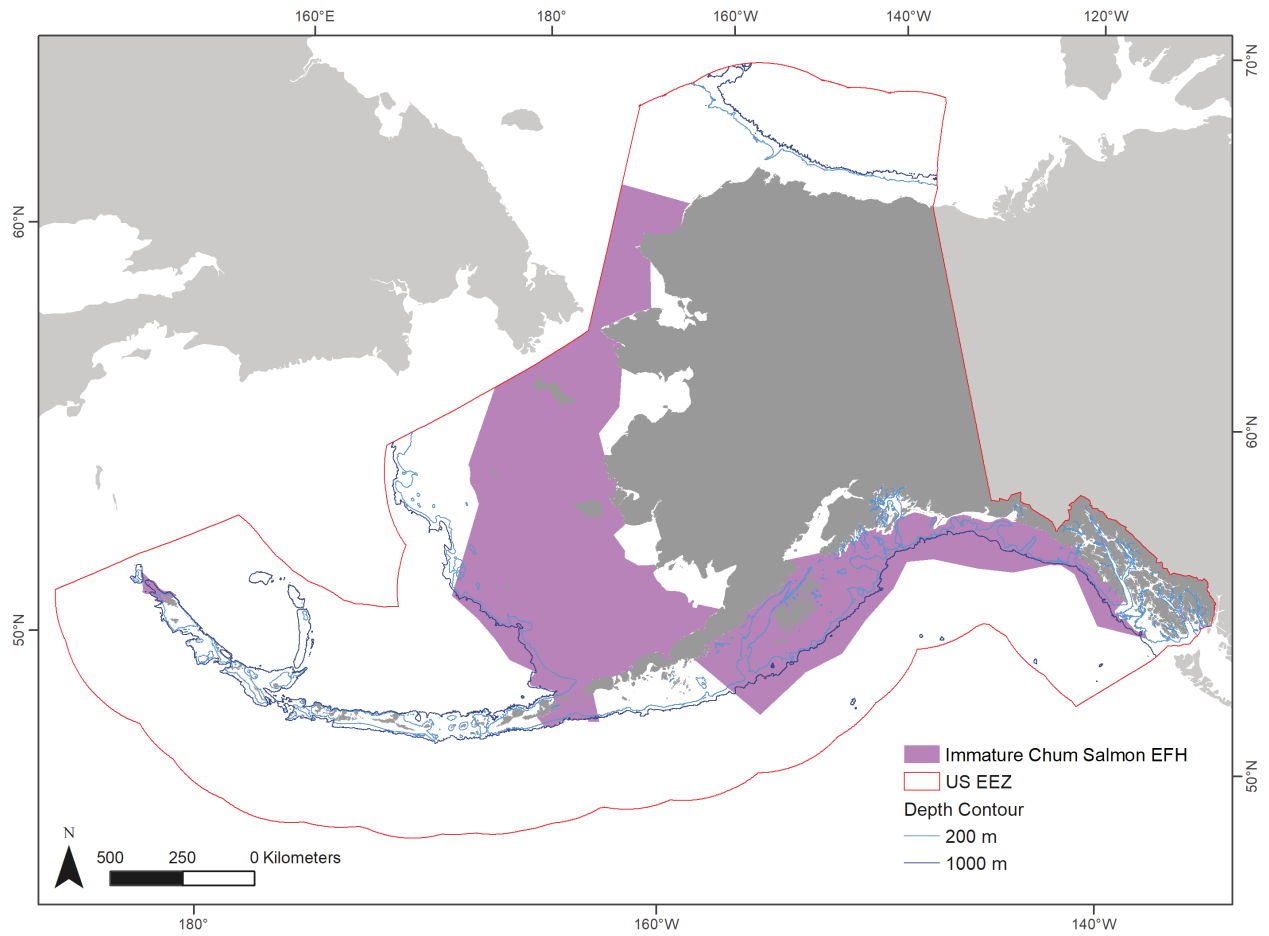


Figure 20 **EFH Distribution for Marine Mature Chum Salmon. Chum salmon mature marine life history stage EFH map**

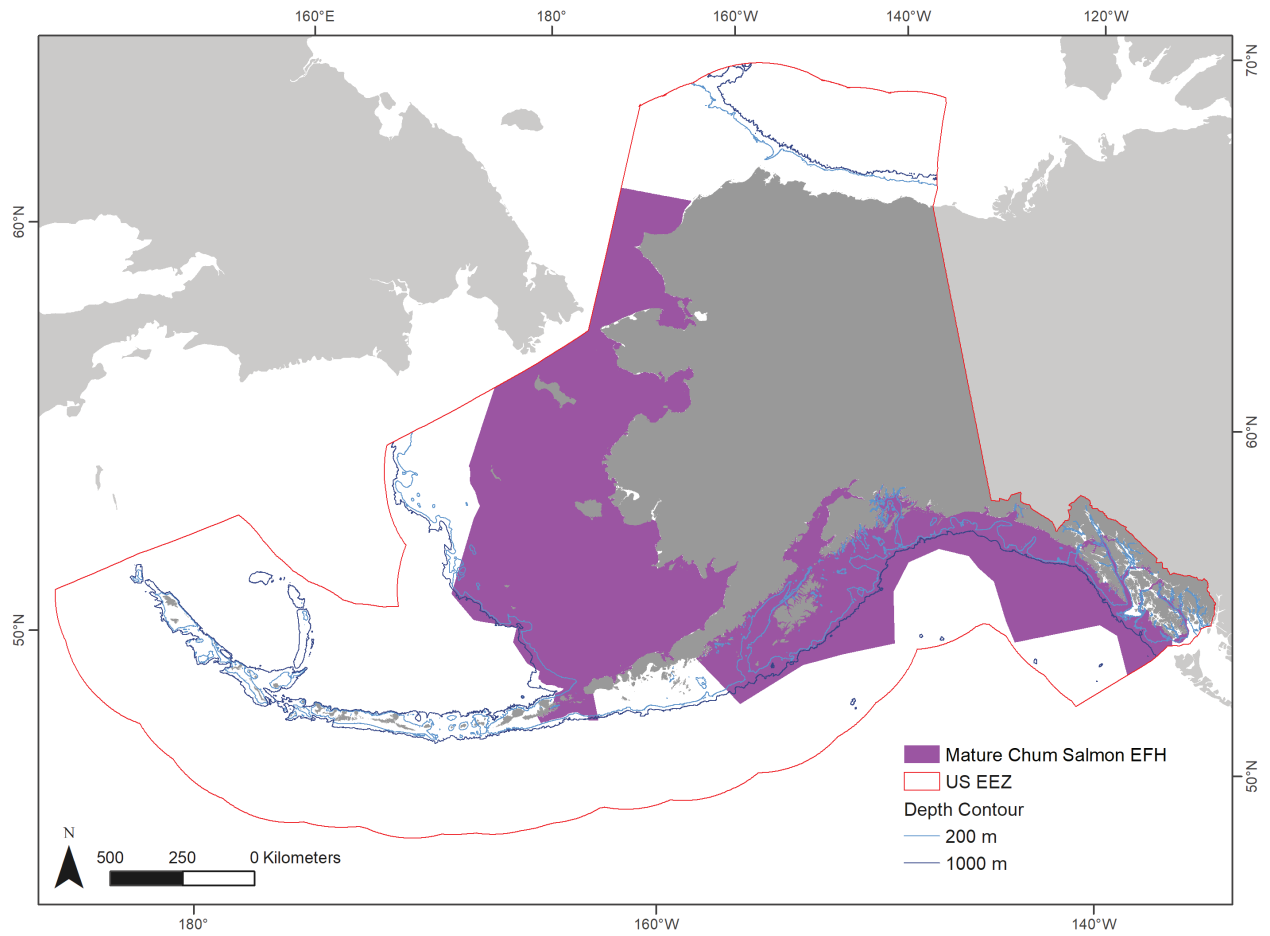


Figure 27 EFH Distribution for Marine Juvenile Sockeye Salmon Sockeye salmon juvenile marine life
history stage EFH map

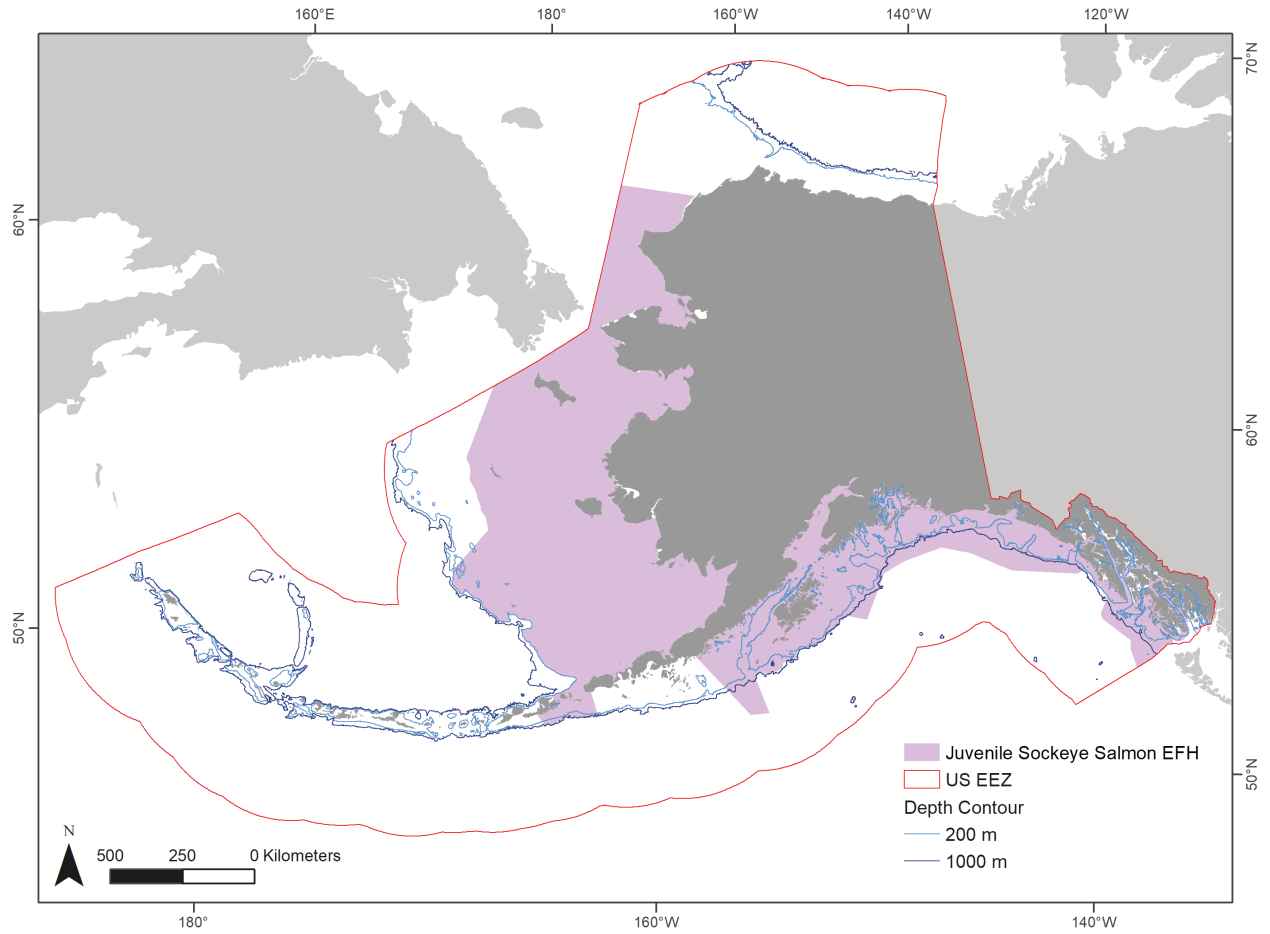


Figure 28 **EFH Distribution for Marine Immature Sockeye Salmon Sockeye salmon immature marine life history stage EFH map**

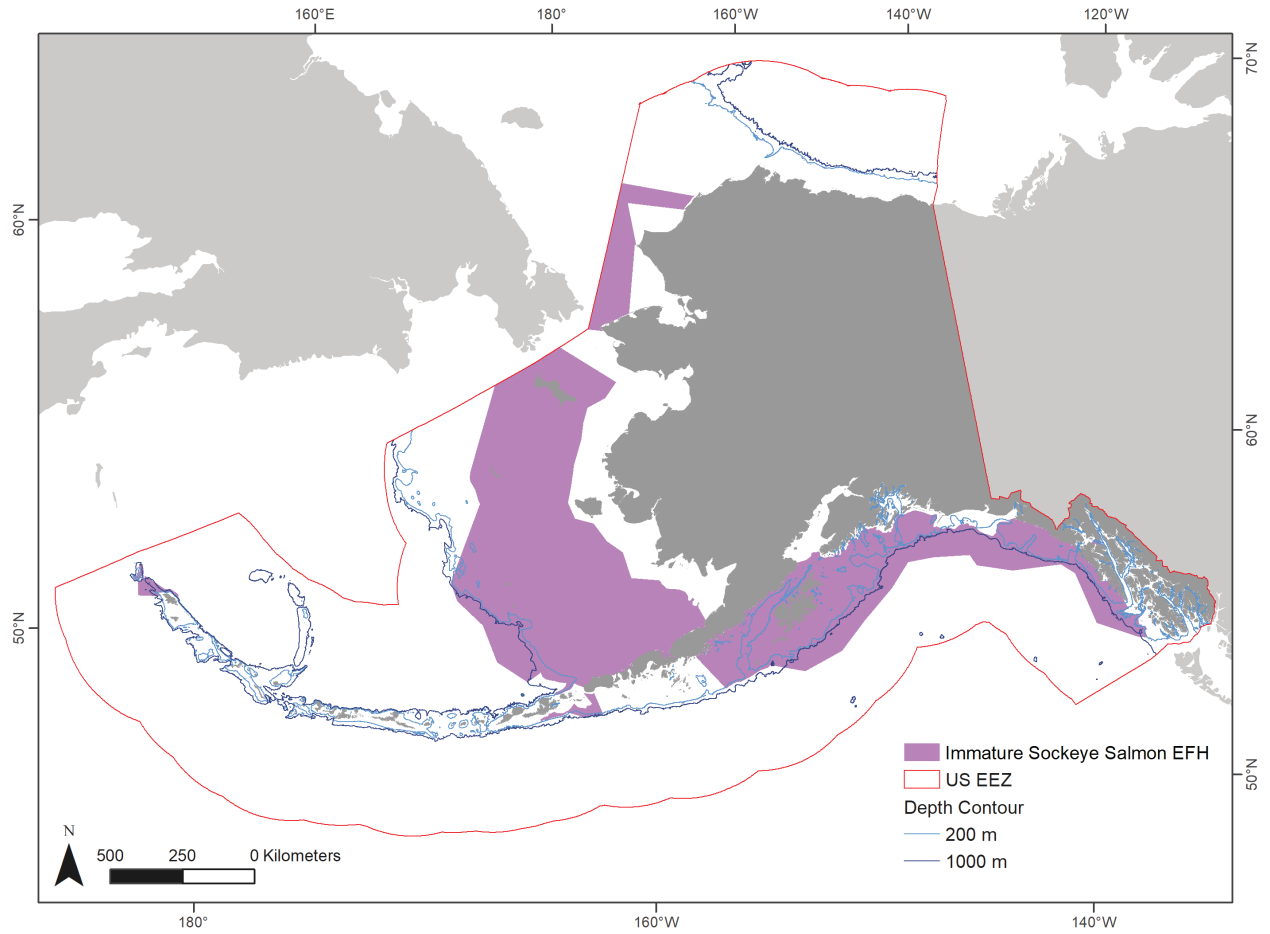


Figure 29 ~~EFH Distribution for Marine Mature Sockeye Salmon~~ Sockeye salmon mature marine life history stage EFH map

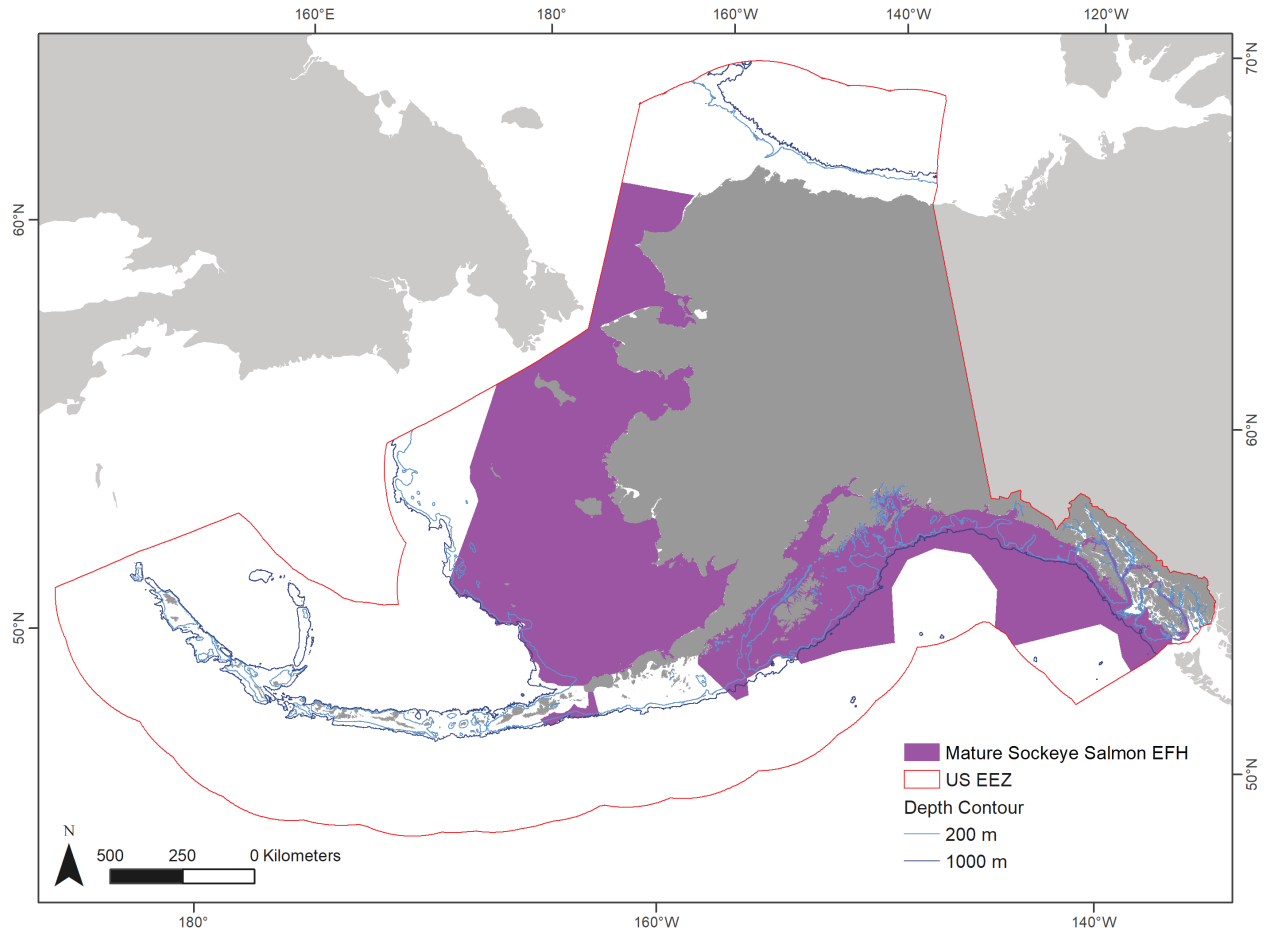


Figure 1 EFH Distribution for Marine Juvenile Chinook Salmon Chinook salmon juvenile marine life
history stage EFH map

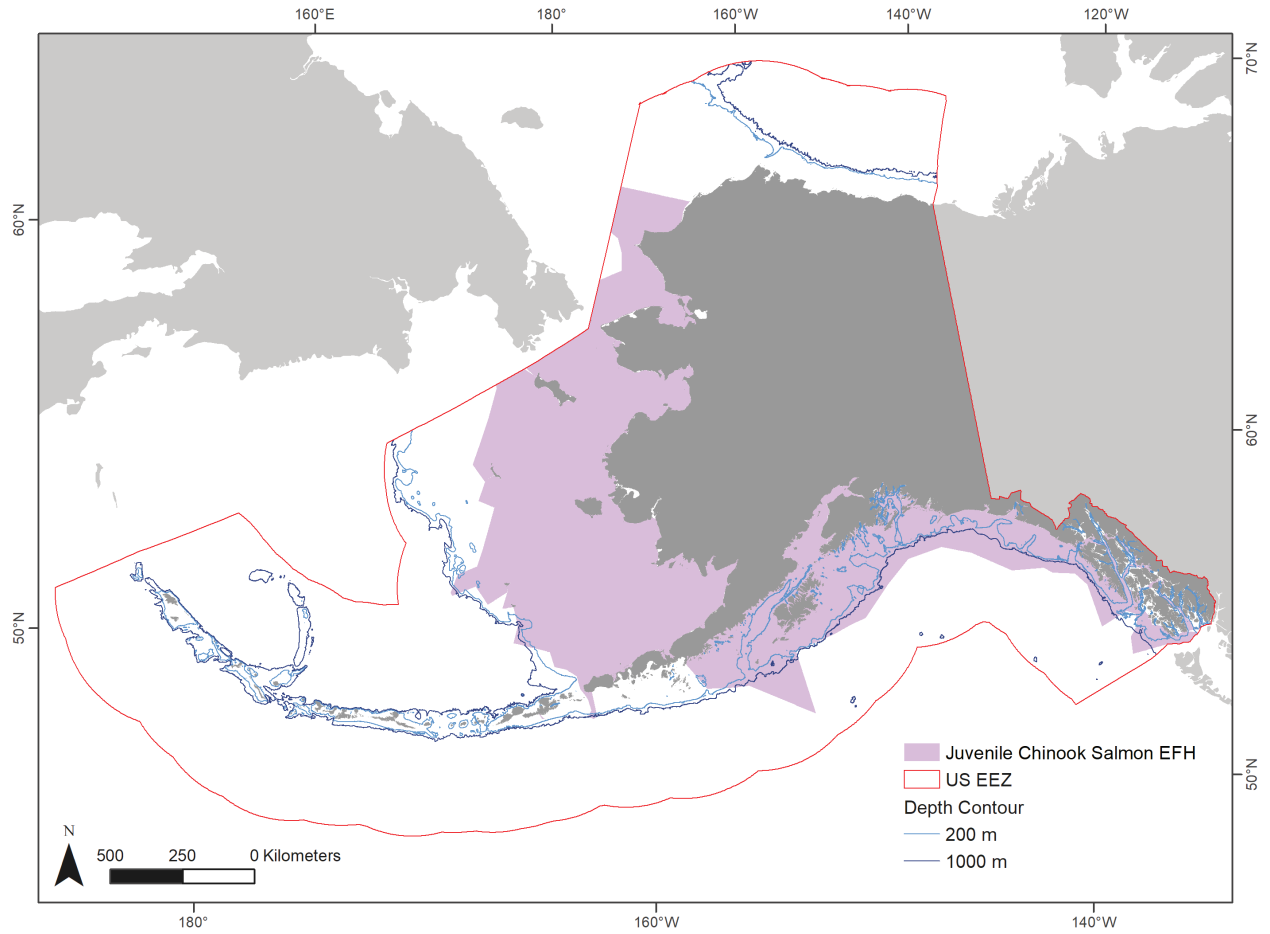


Figure 2 **EFH Distribution for Marine Immature Chinook Salmon** **Chinook salmon immature marine life history stage EFH map**

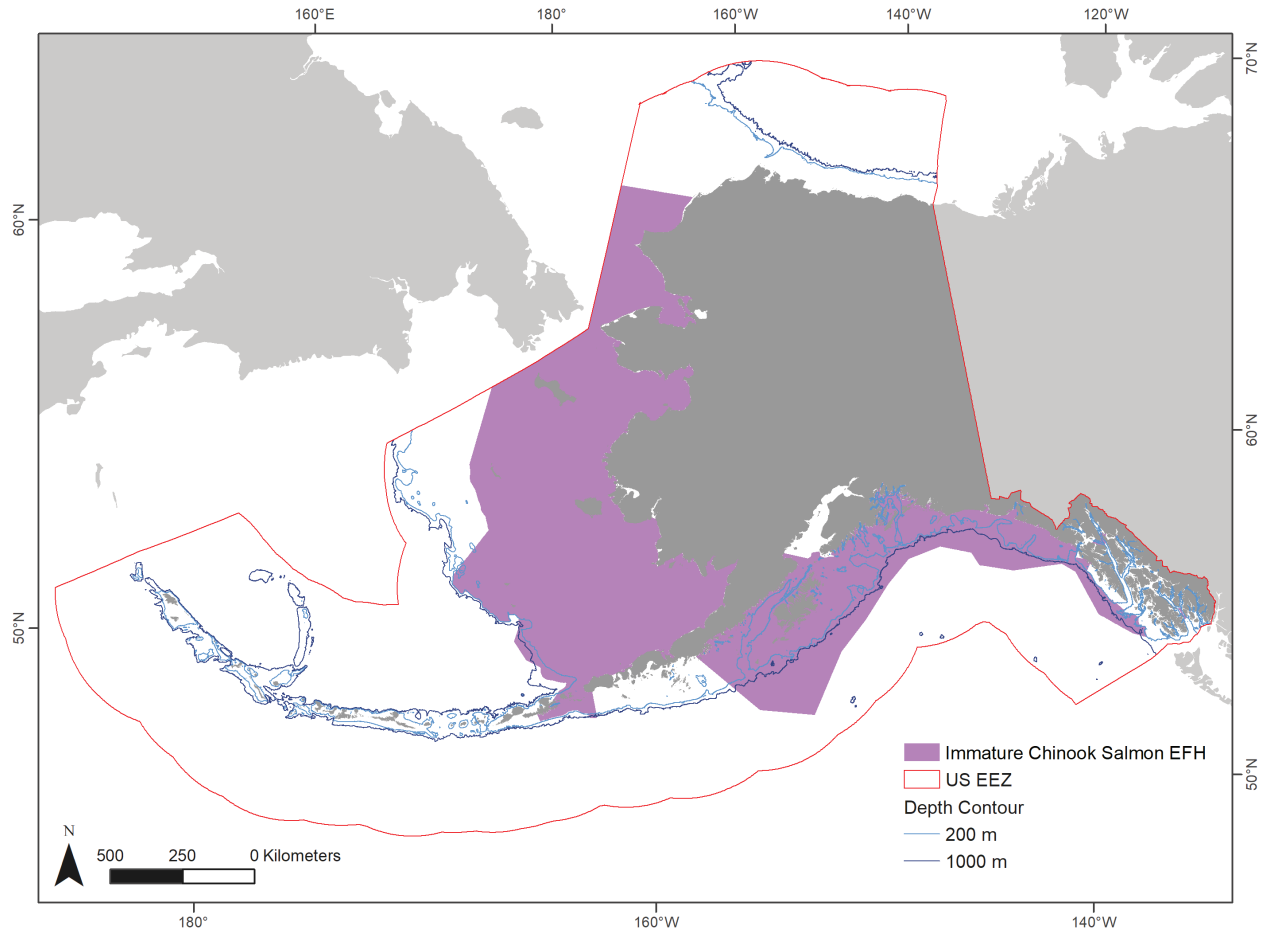


Figure 3 **EFH Distribution for Marine Mature Chinook Salmon** **Chinook salmon mature marine life history stage EFH map**

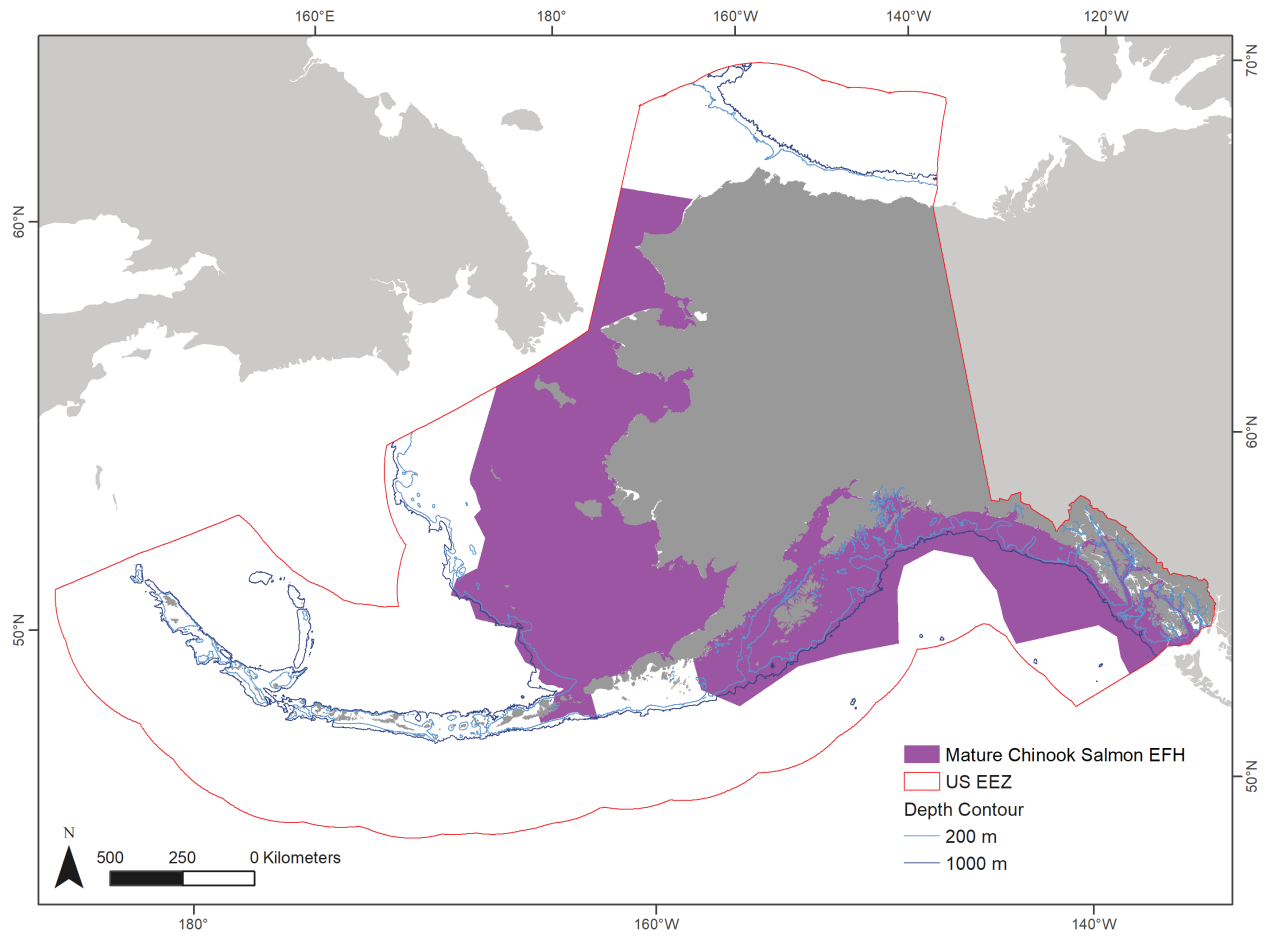


Figure 4 **EFH Distribution for Marine Juvenile Coho Salmon** **Coho salmon juvenile marine life history stage EFH map**

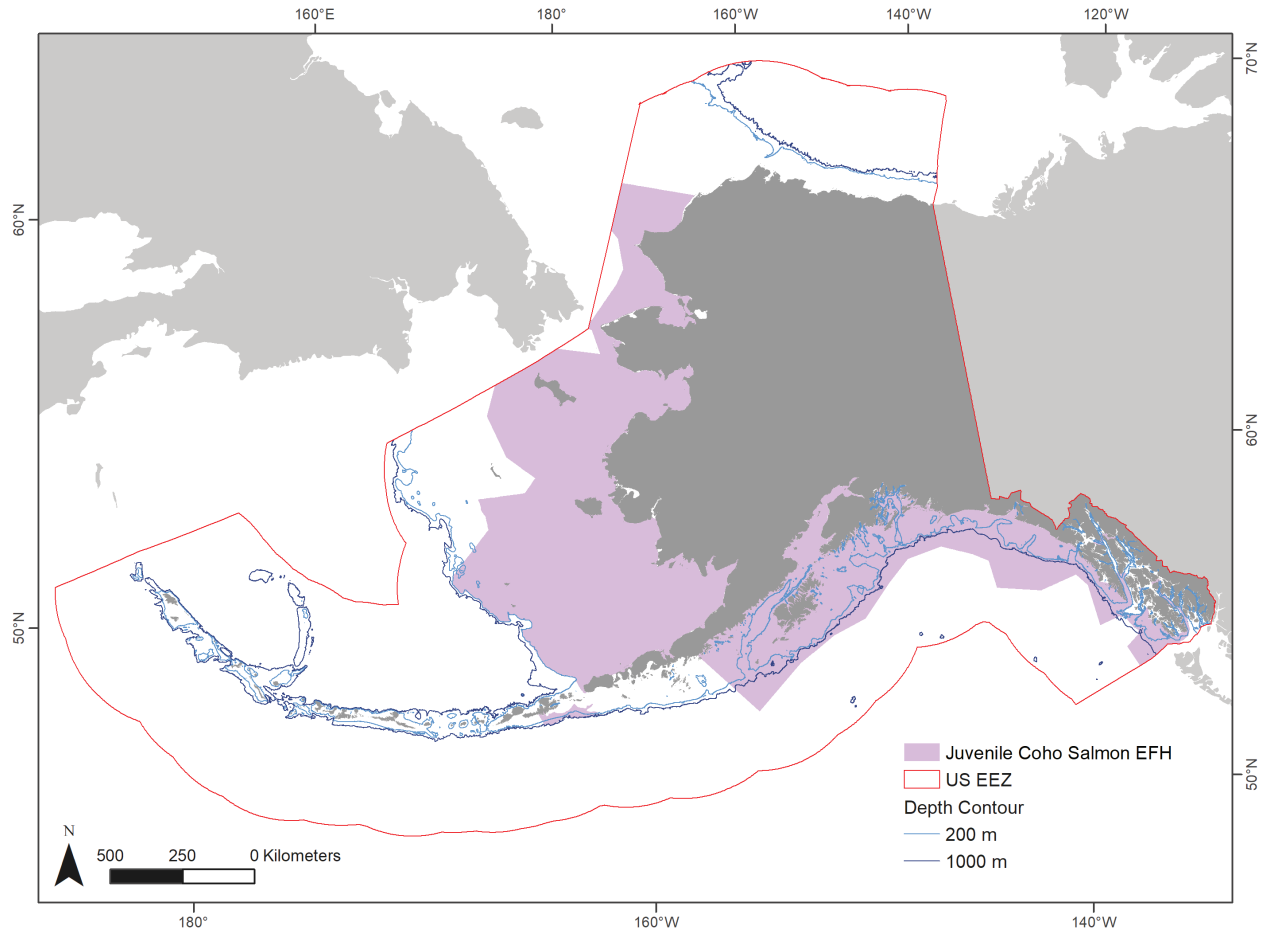


Figure 5 ~~EFH Distribution for Immature and Mature Coho Salmon~~ Coho salmon mature marine life history stage EFH map

