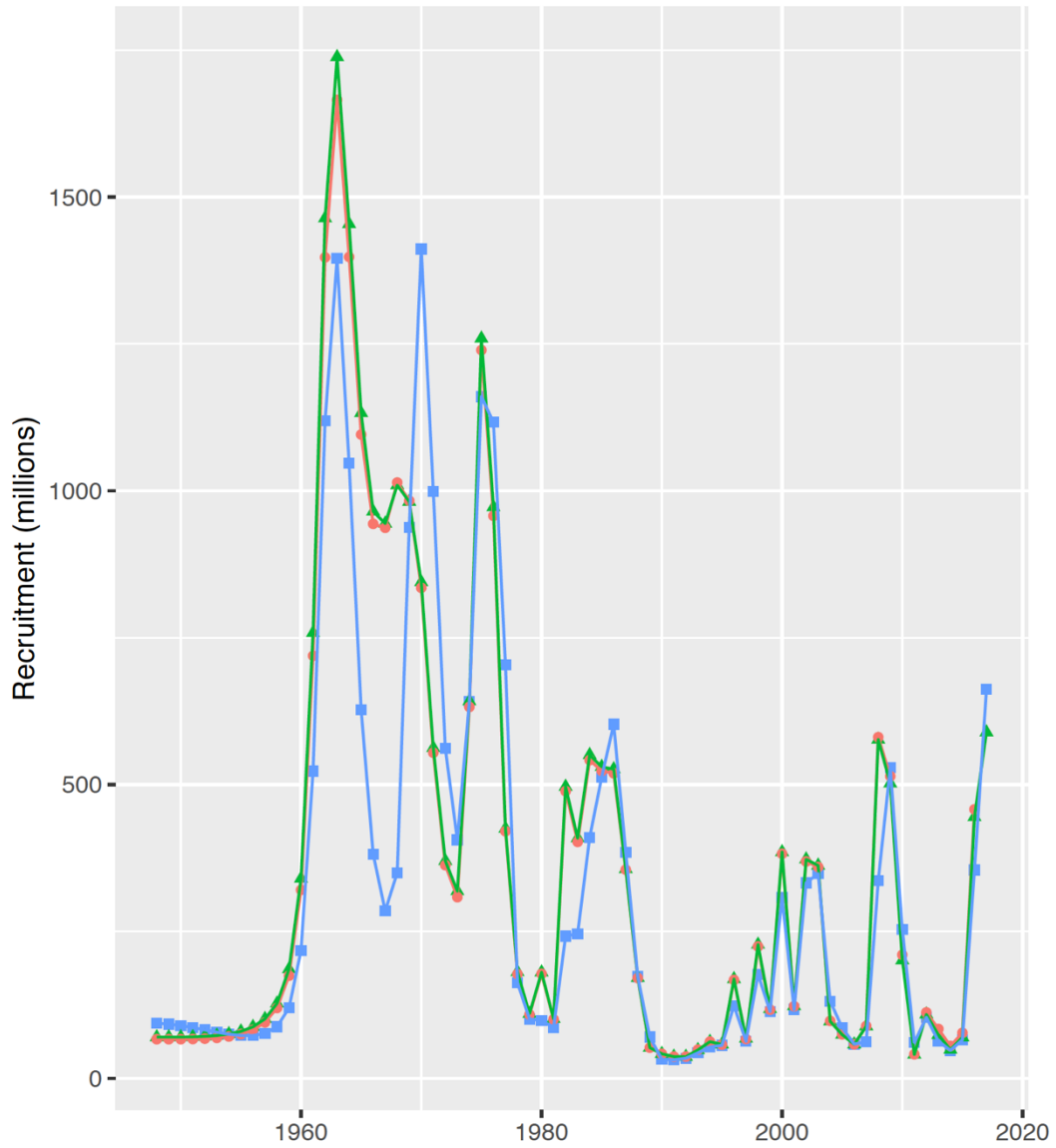


Tanner Crab, Day 2  
(but seems like...)

# Summary Results

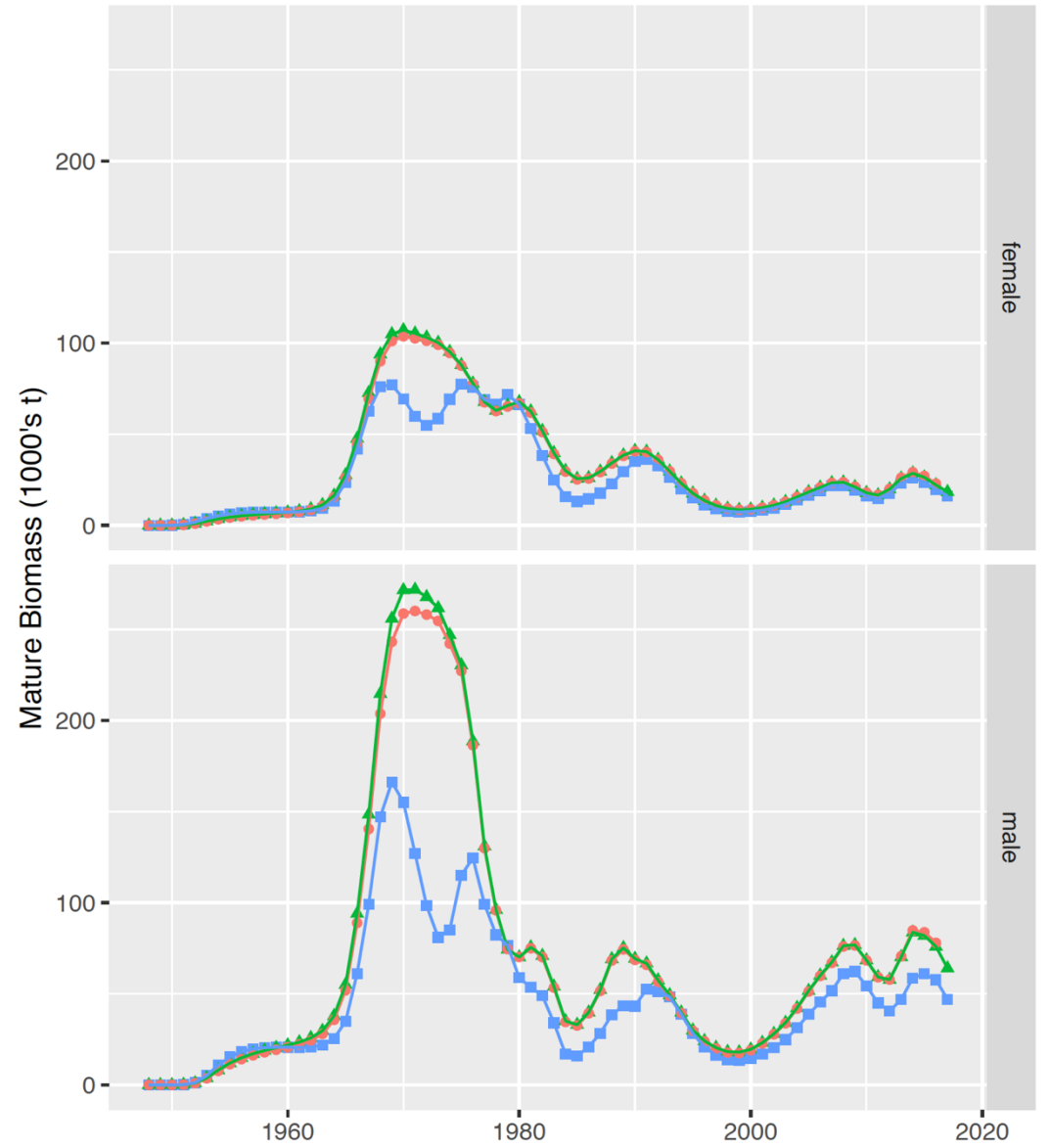
Model scenario	objective function value	max gradient	average recruitment	B0	Bmsy	Fmsy	MSY	Fofl	OFL	prjB	B/Bmsy	2017/18 MMB
			millions	1000's t	1000's t		1000's t		1000's t	1000's t		1000's t
17AM	2905.84	0.00	213.96	83.34	29.17	0.75	12.26	0.75	25.42	43.32	1.49	80.58
18AM17	2962.17	0.00	223.63	86.55	30.29	0.74	12.75	0.74	20.87	35.95	1.19	66.64
18C2a	4234.40	0.01	199.49	63.01	22.05	0.91	11.54	0.91	16.76	24.06	1.09	50.12

# Population Quantities

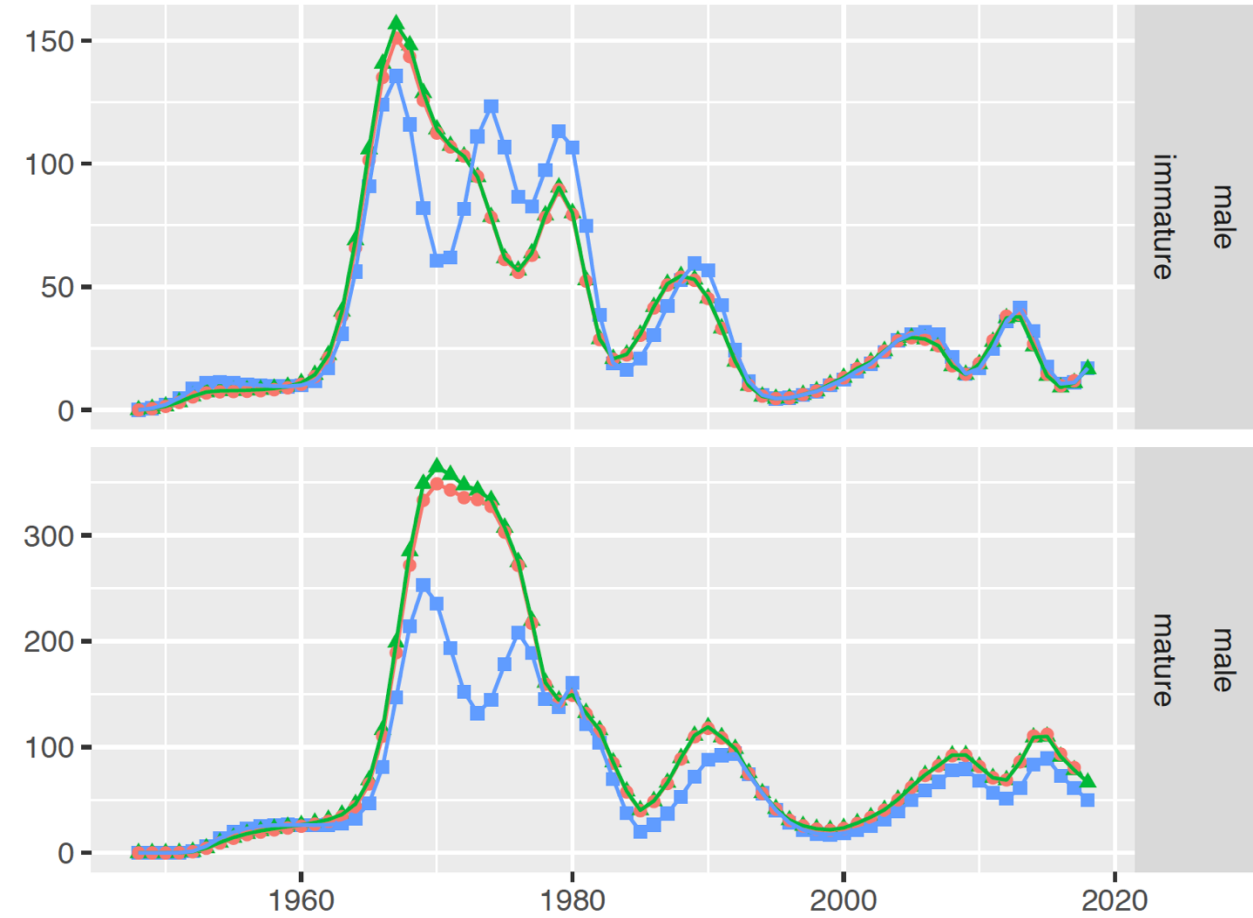
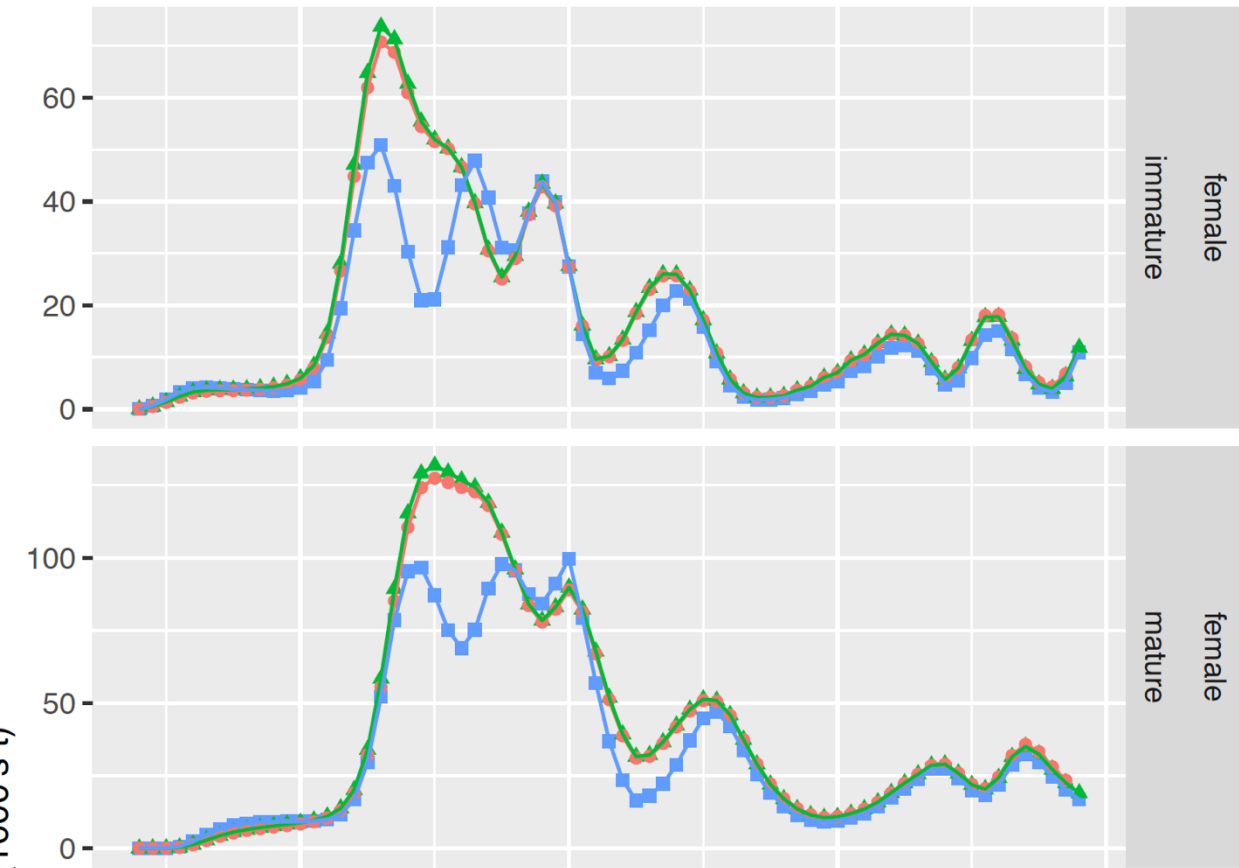


case

- 17AM
- 18AM, ...
- 18C2a



# Population Quantities: Biomass (1000's t)

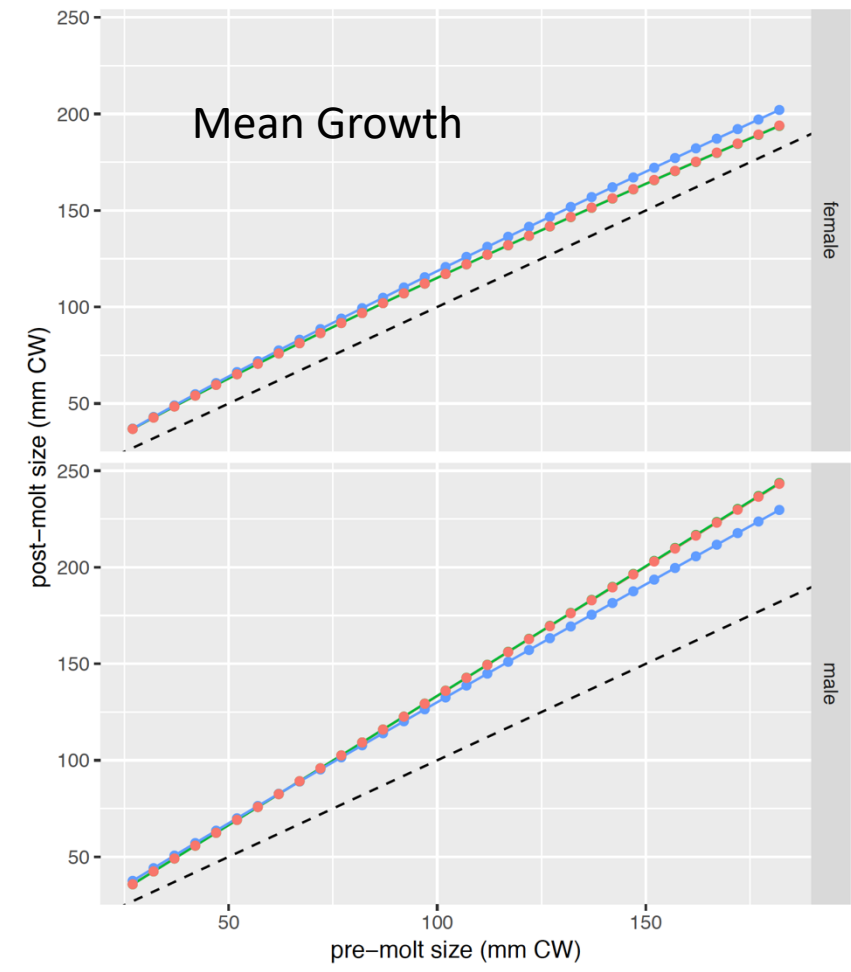
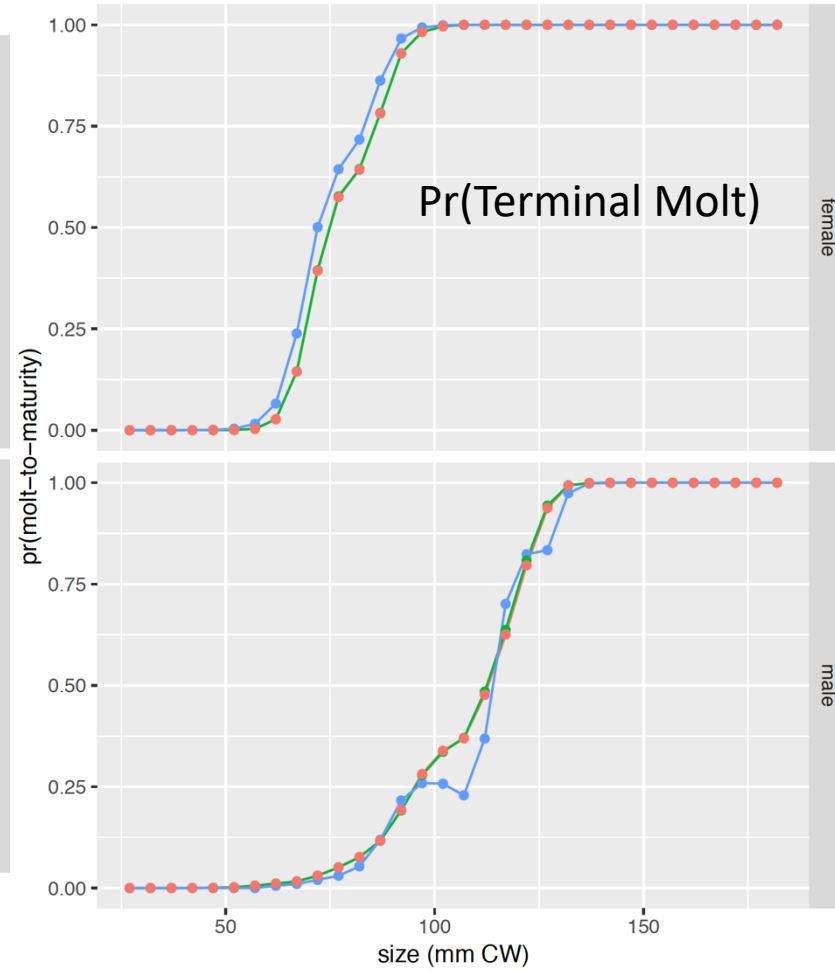
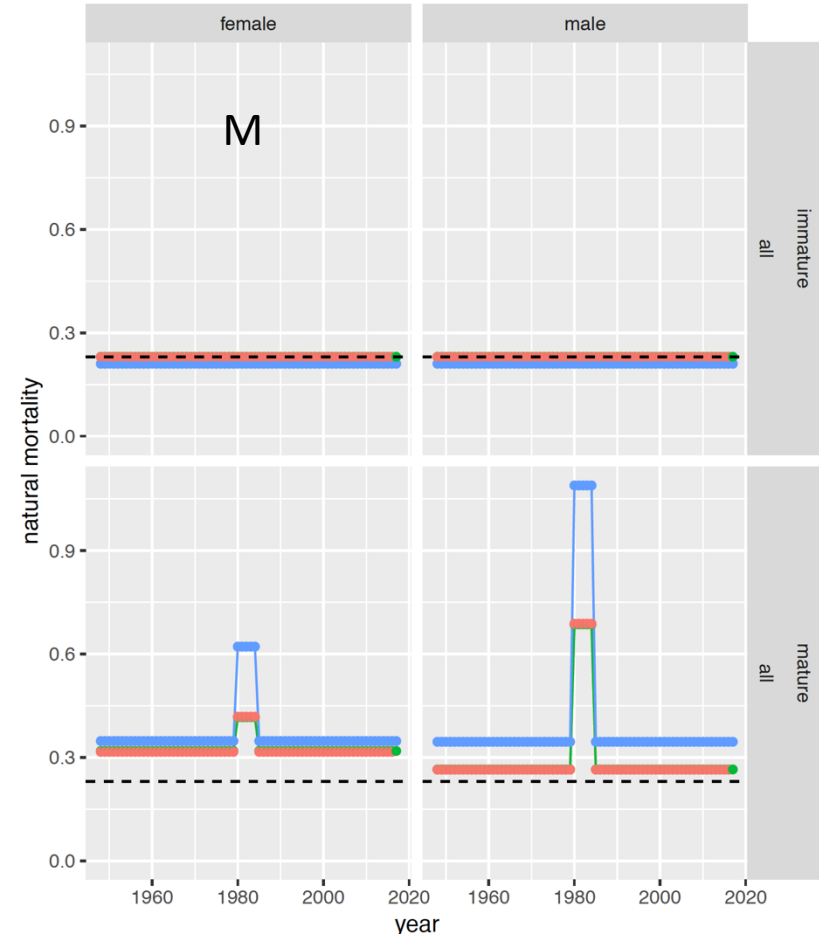


case

- 17AM
- 18AM17
- 18C2a

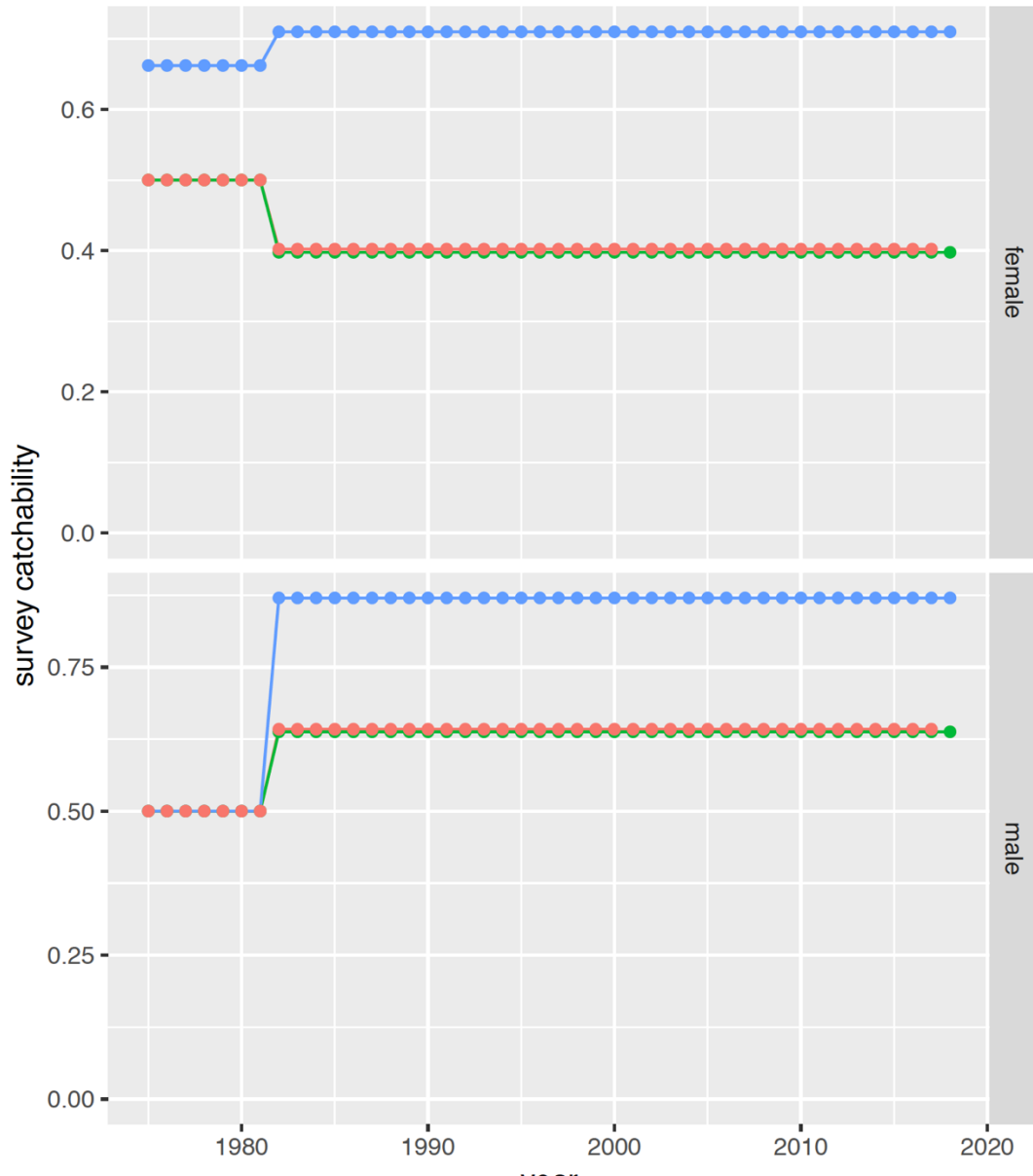


# Population processes

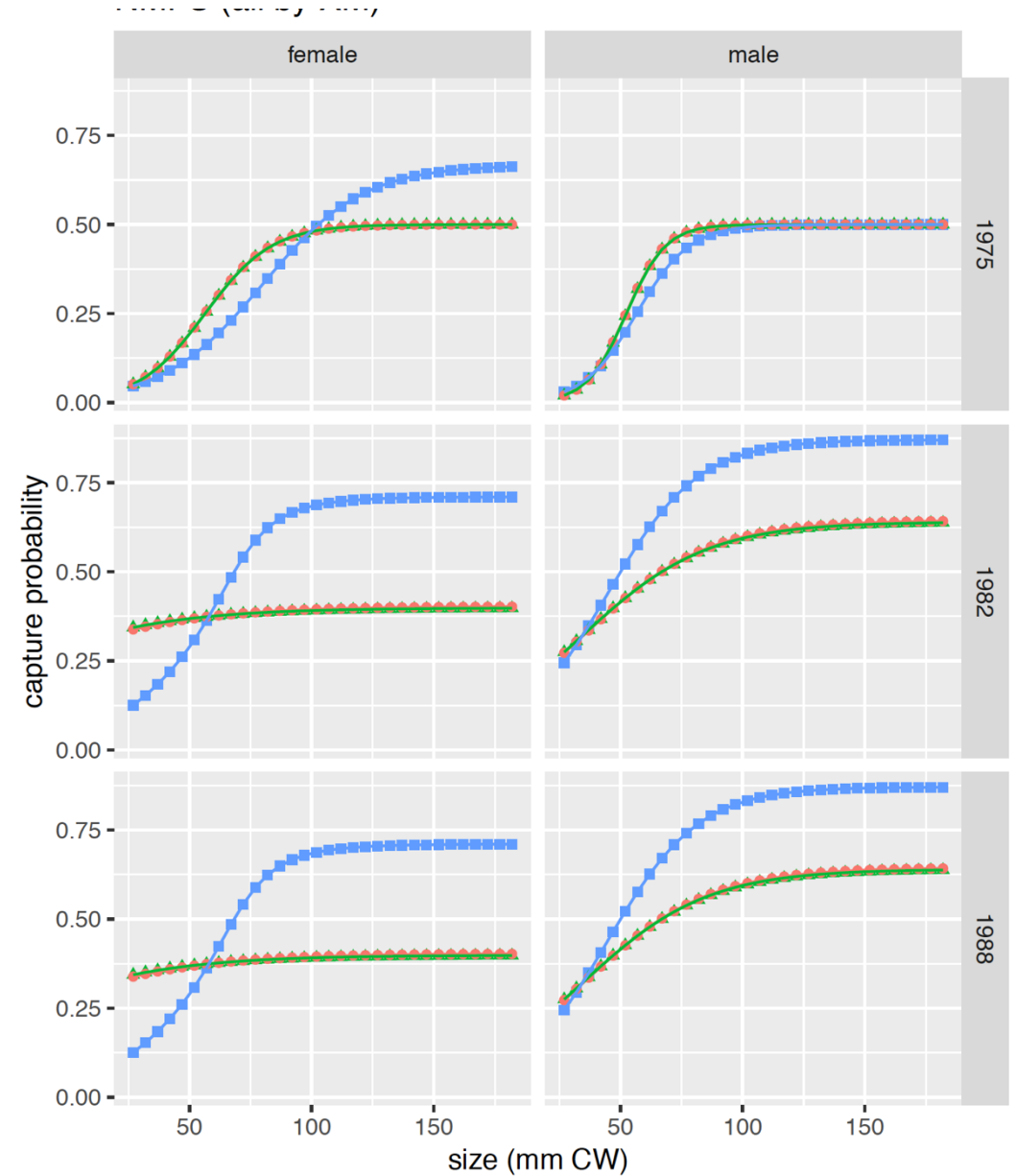
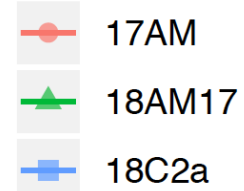


- 17AM
- ▲ 18AM17
- 18C2a

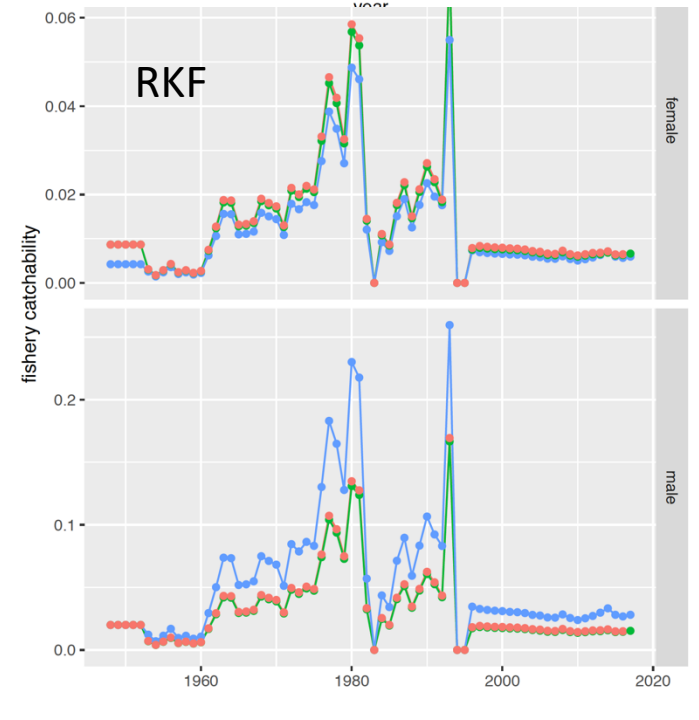
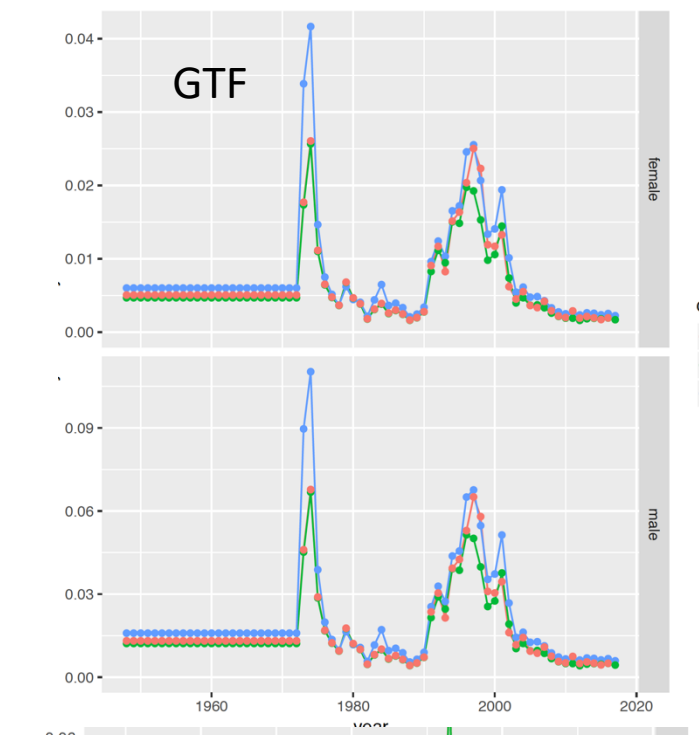
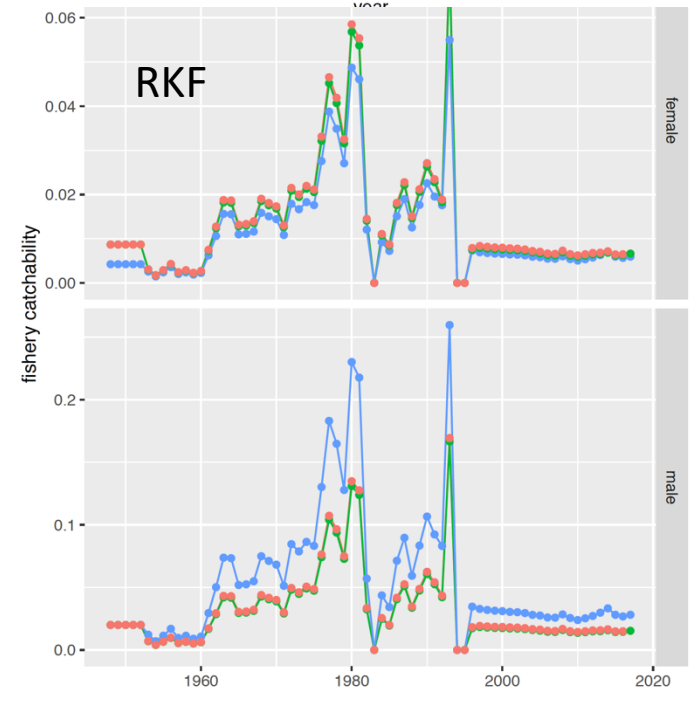
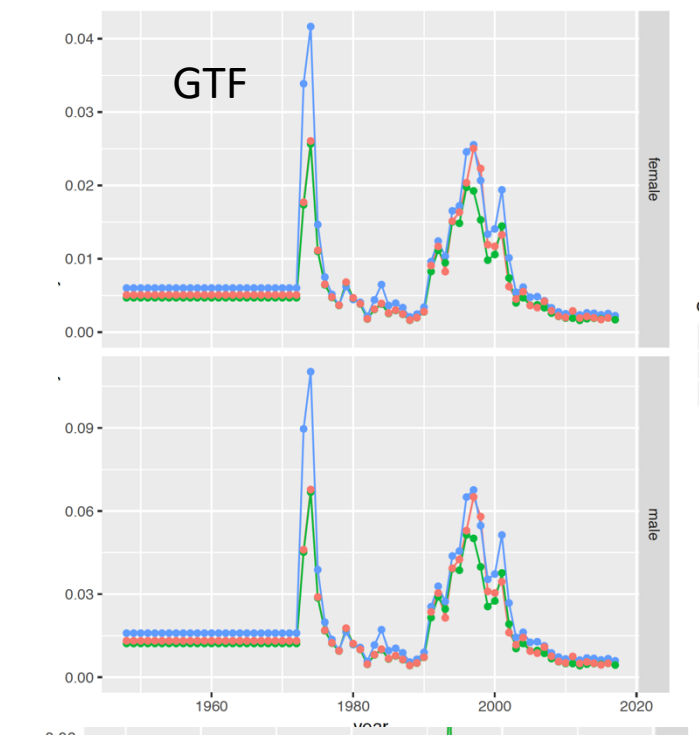
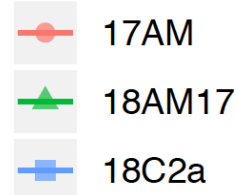
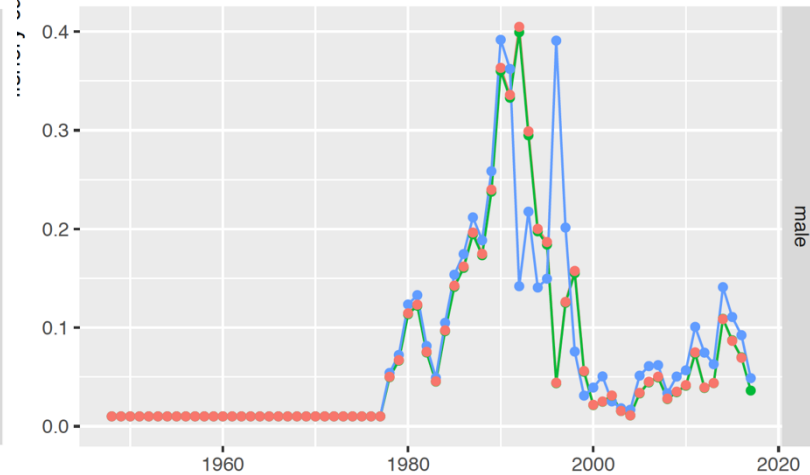
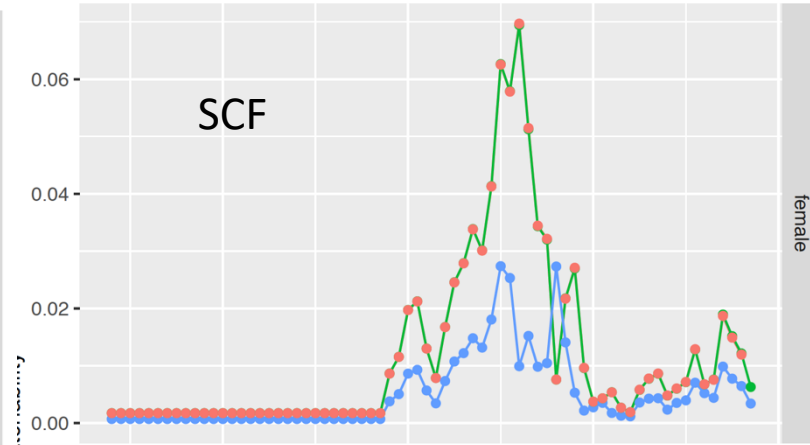
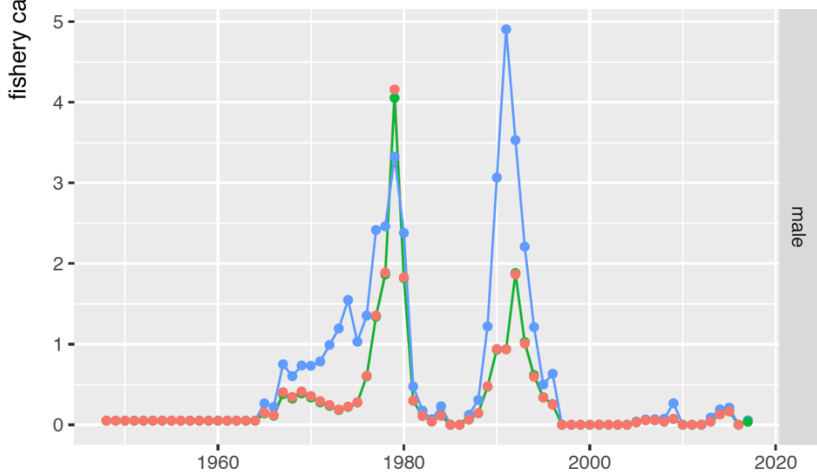
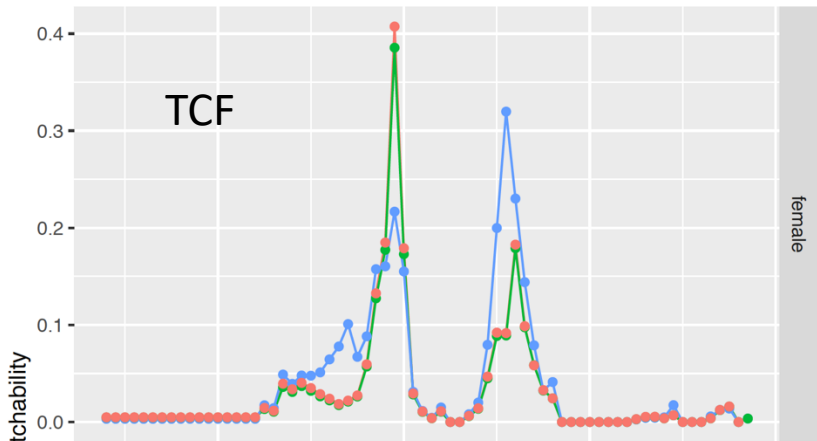
# Survey Characteristics



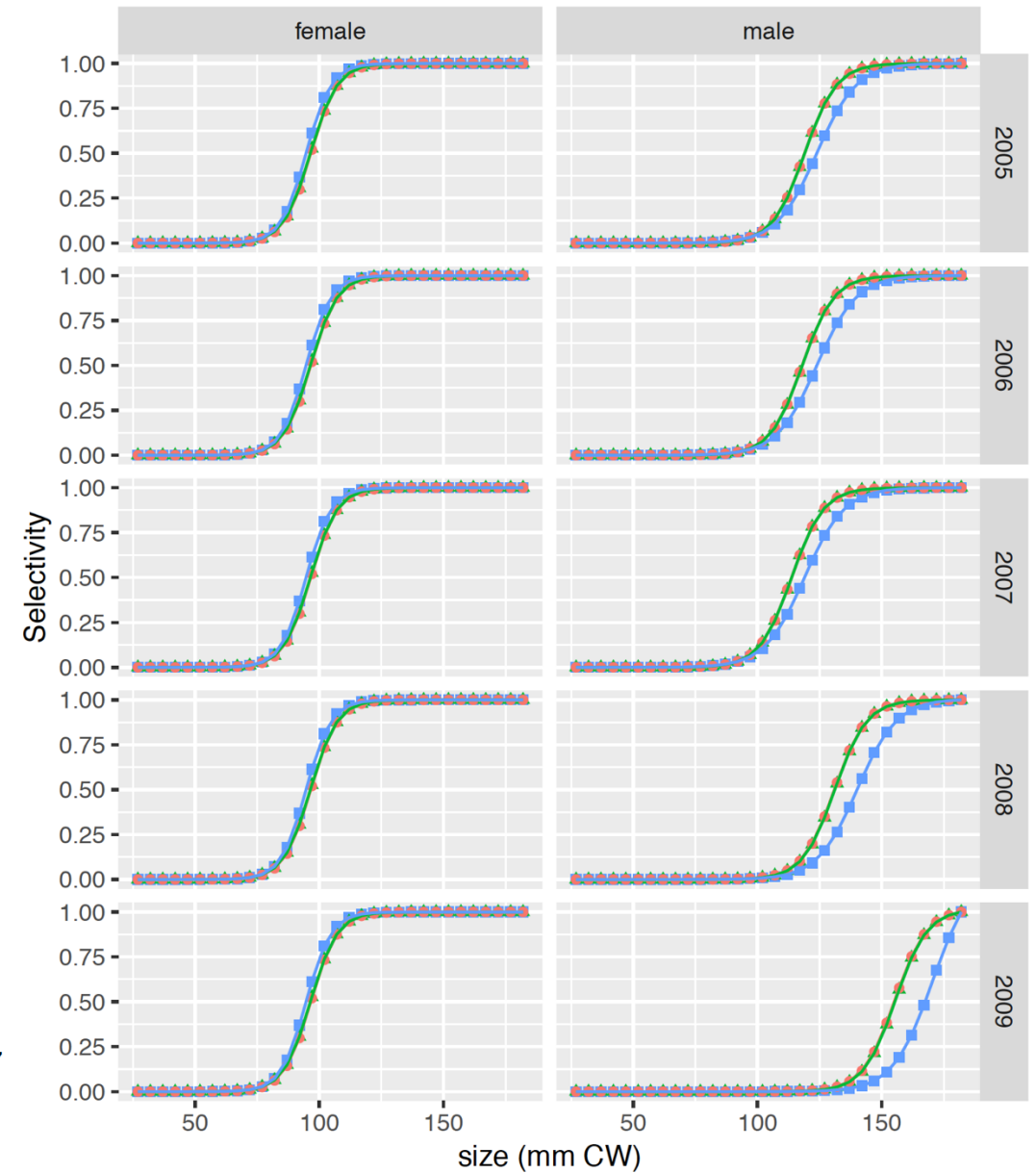
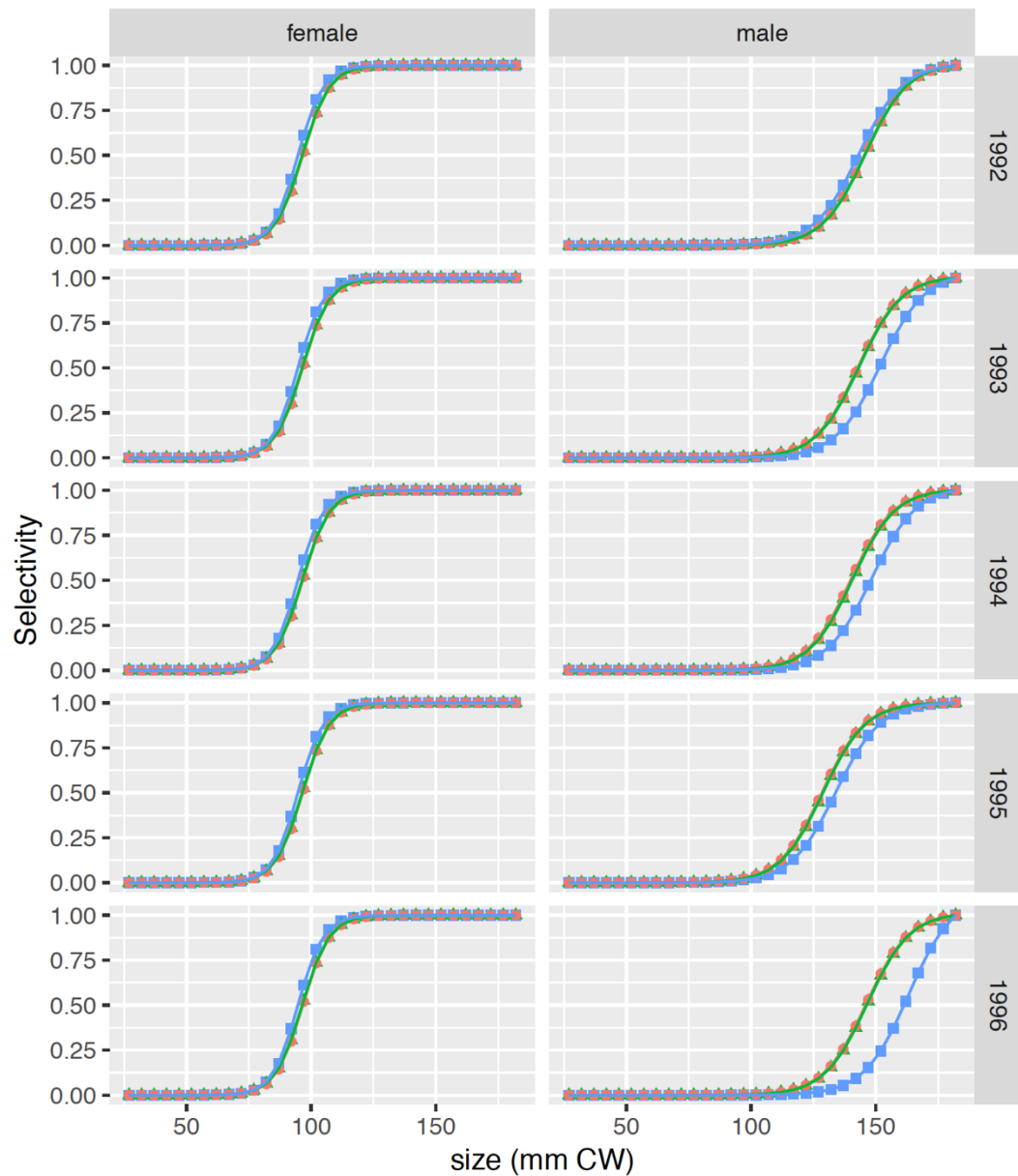
case



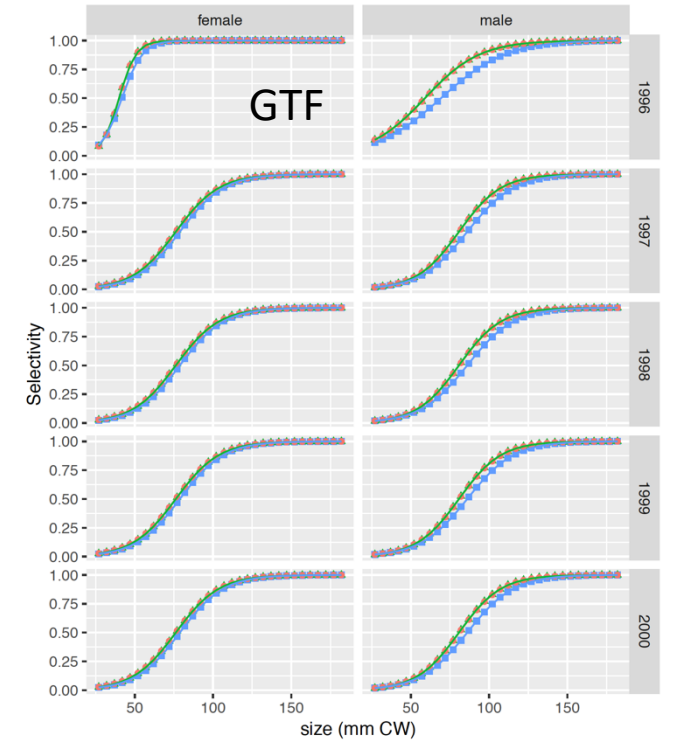
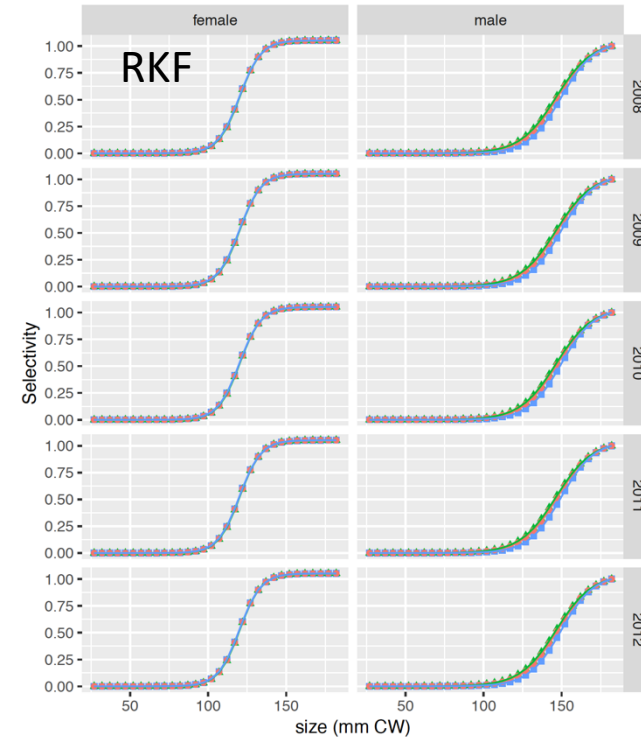
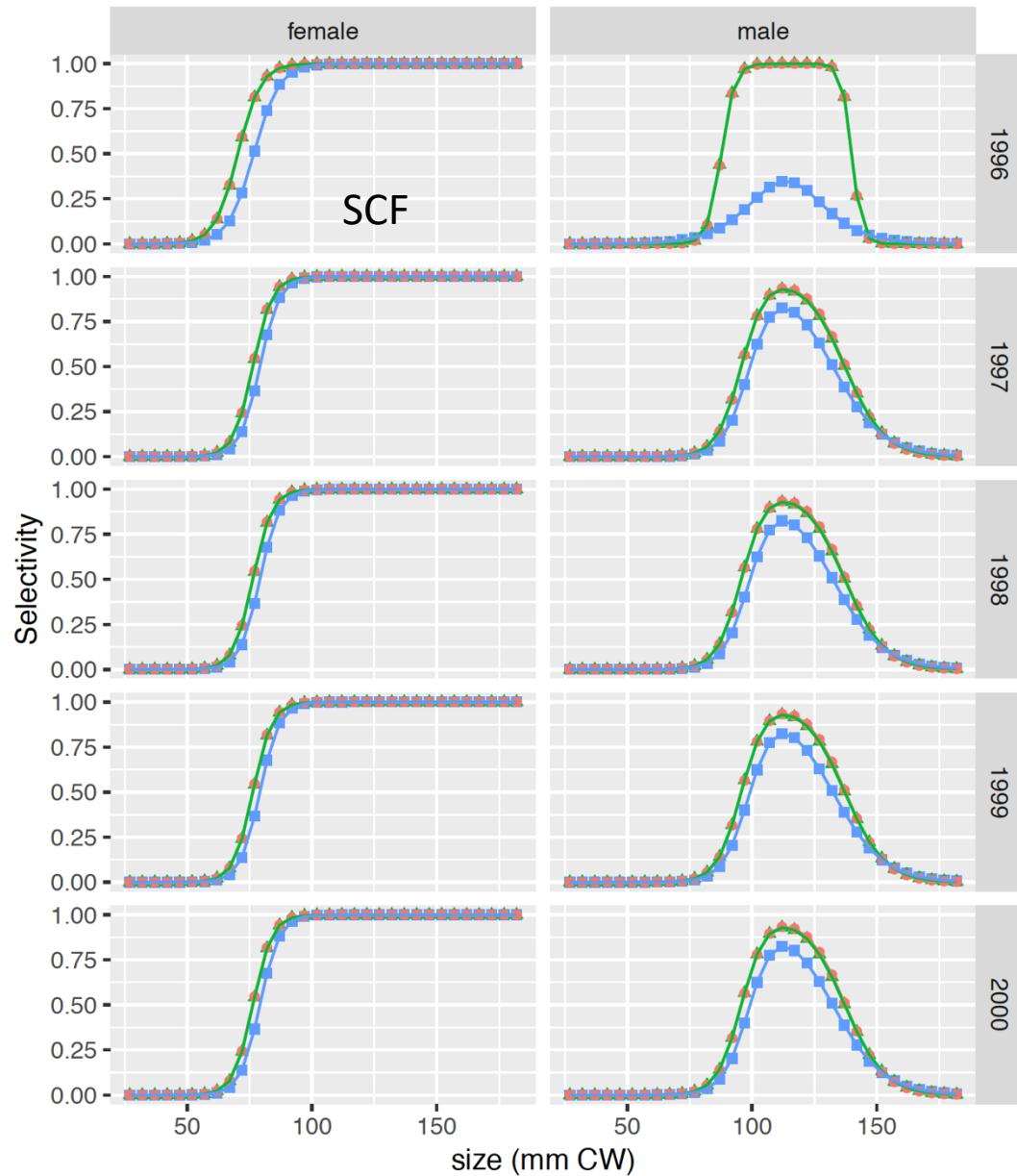
# Fishery Catchability



# Fishery Total Catch Selectivity: TCF



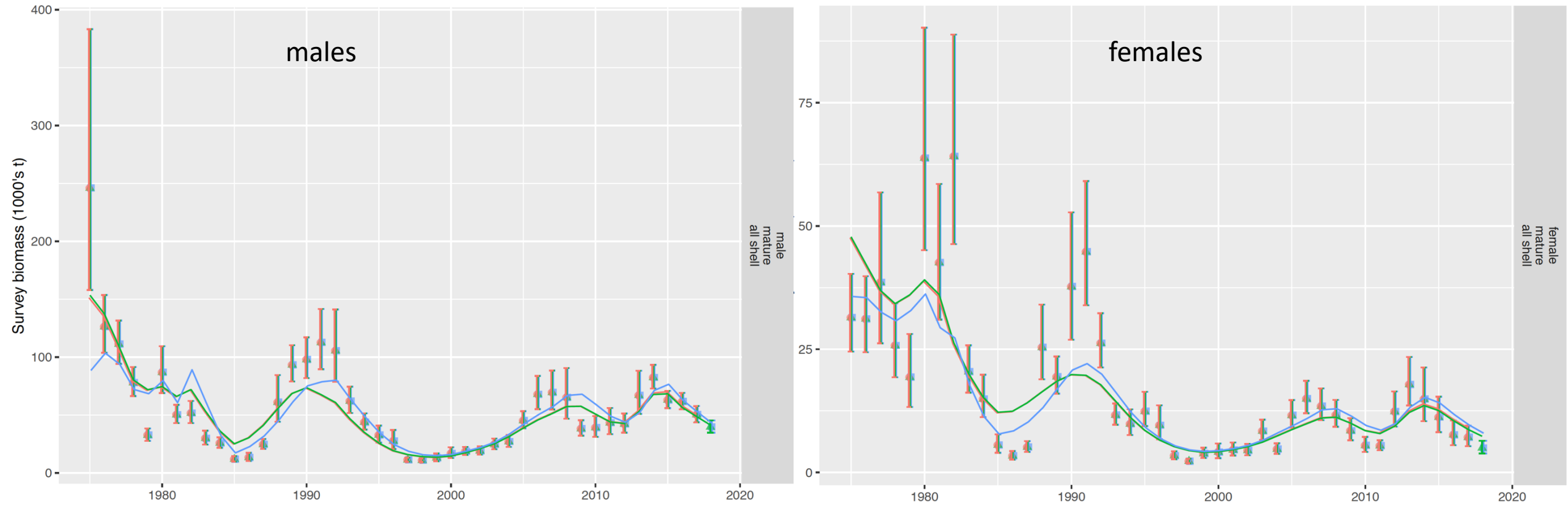
# Fishery Total Bycatch Selectivities



## case

- 17AM
- ▲— 18AM17
- 18C2a

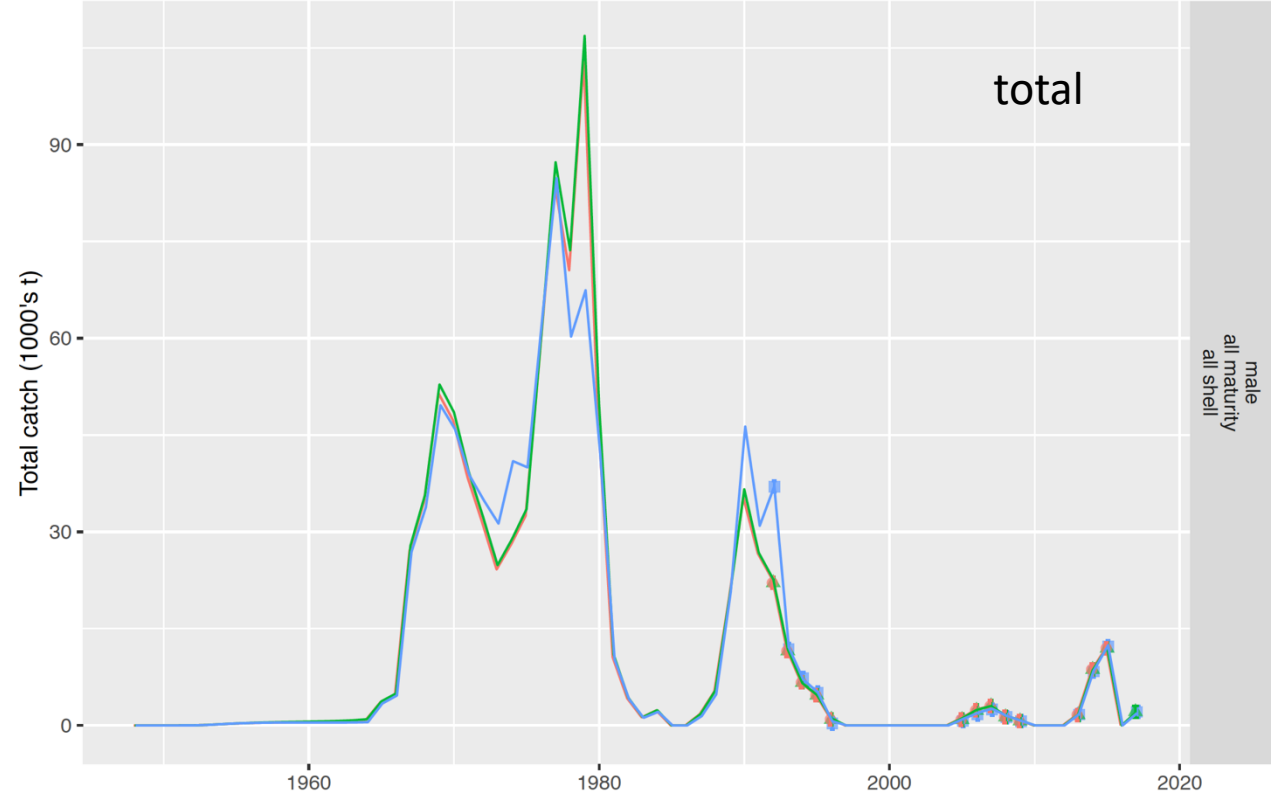
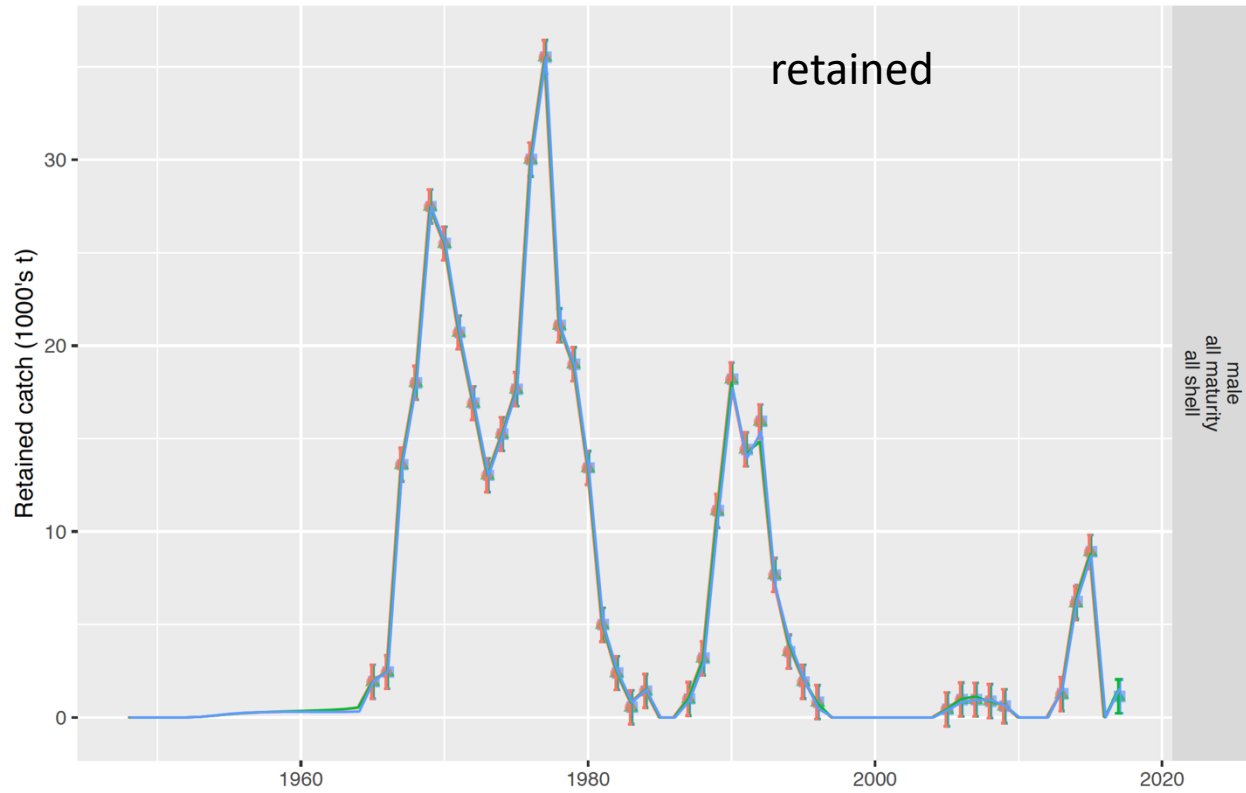
# Fits to survey biomass



## case

- 17AM
- 18AM17
- 18C2a

# Male catch in the directed fishery



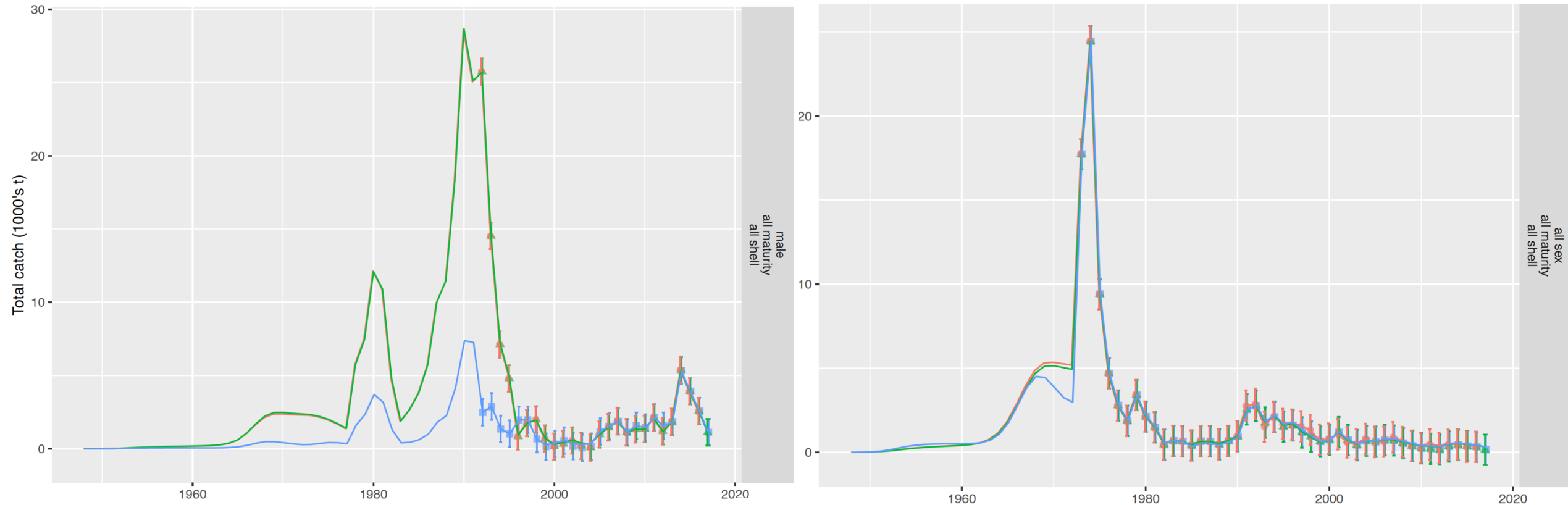
case

- 17AM
- 18AM17
- 18C2a

# Fits to total male catch in bycatch fisheries

SCF

GTF

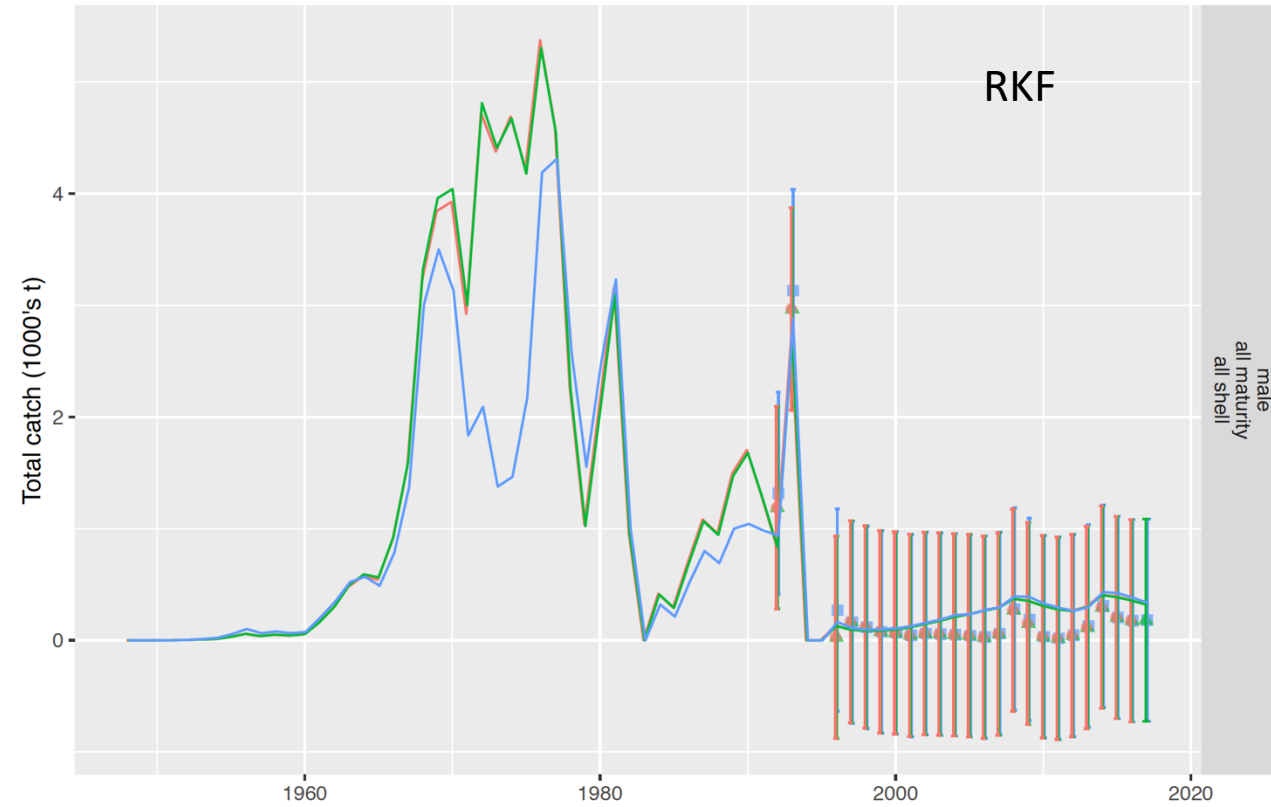


case

- 17AM
- 18AM17
- 18C2a



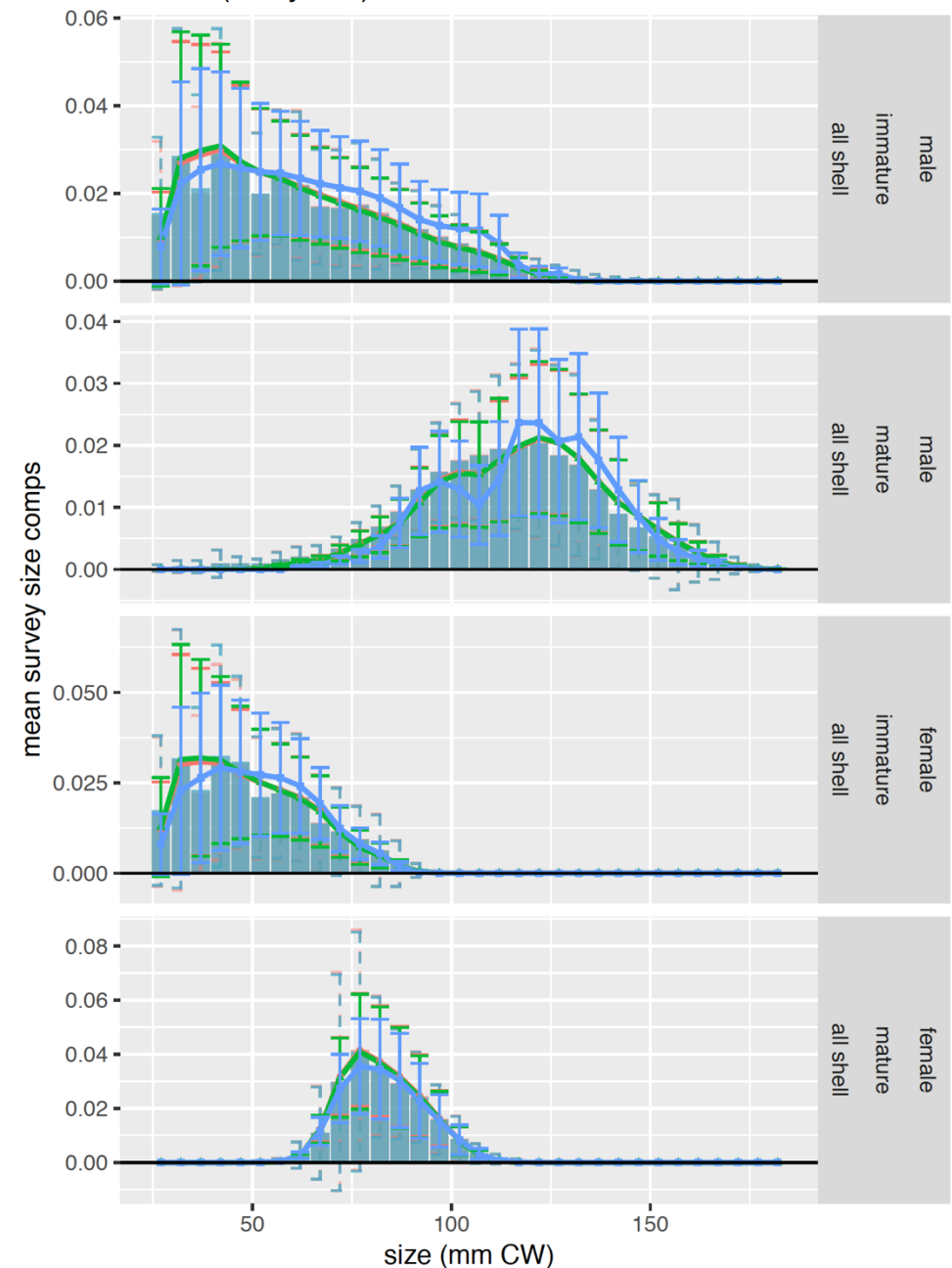
# Fits to total male catch in bycatch fisheries



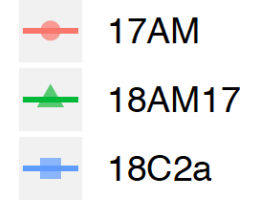
case

- 17AM
- 18AM17
- 18C2a

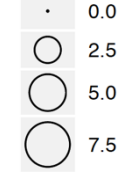
# Survey Size Comps



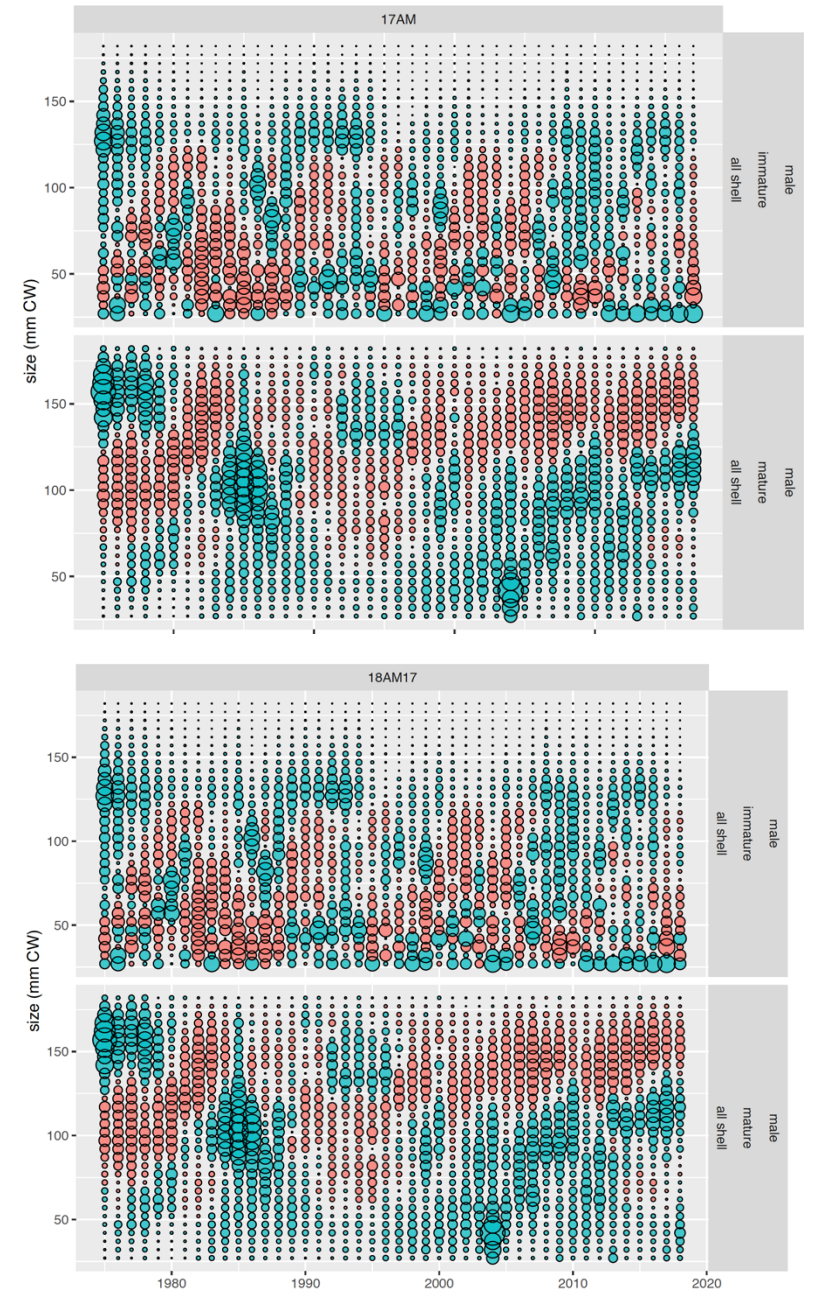
## case



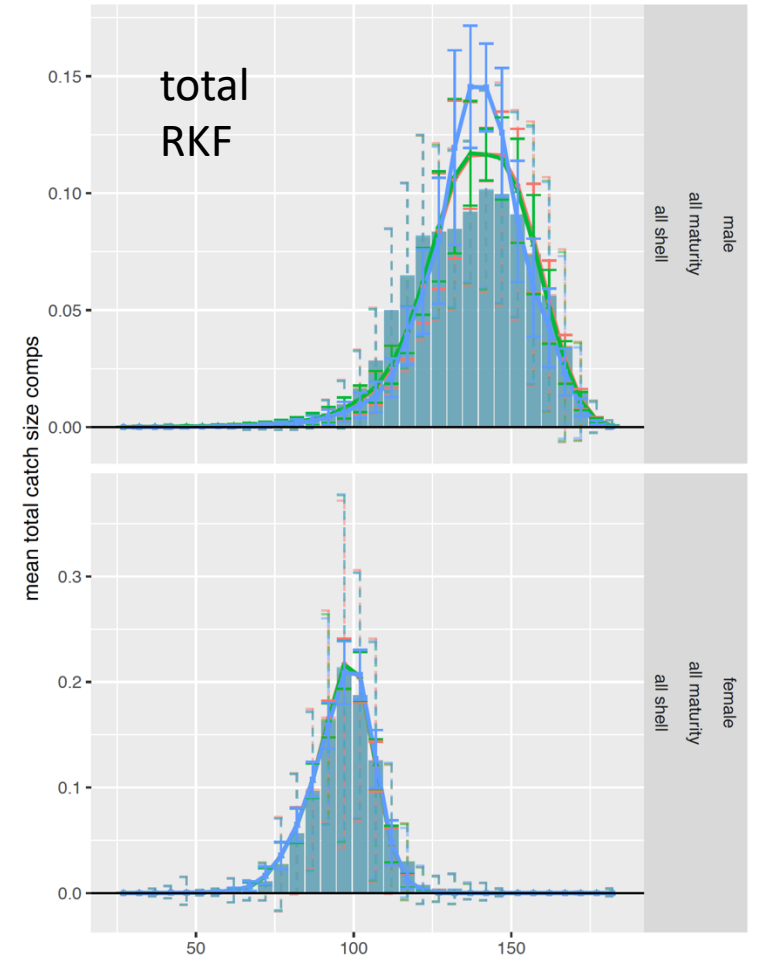
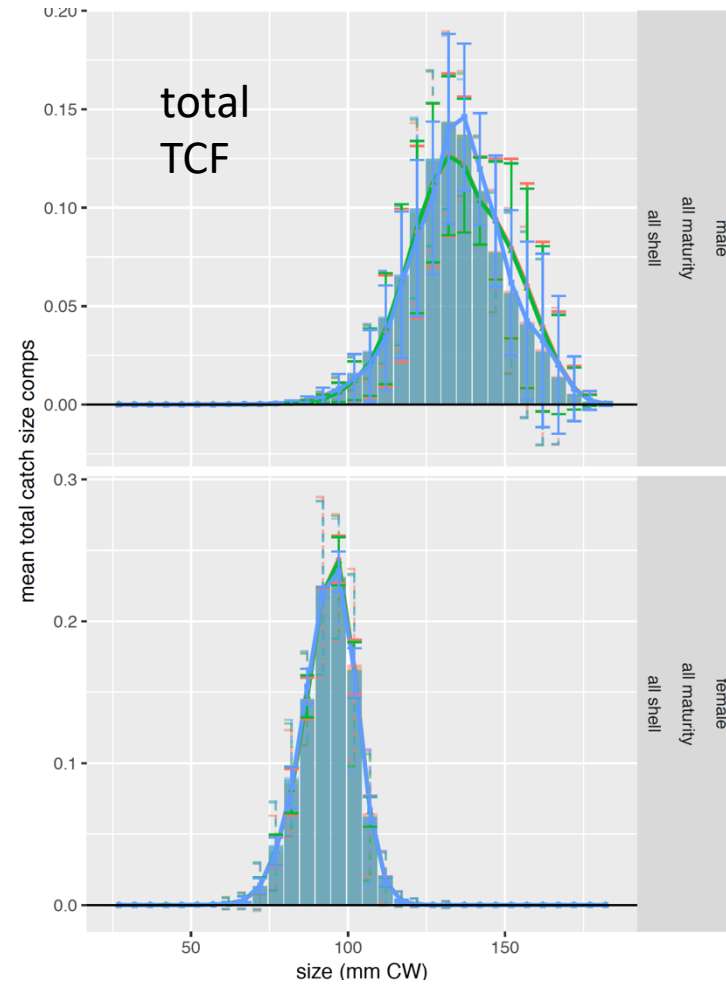
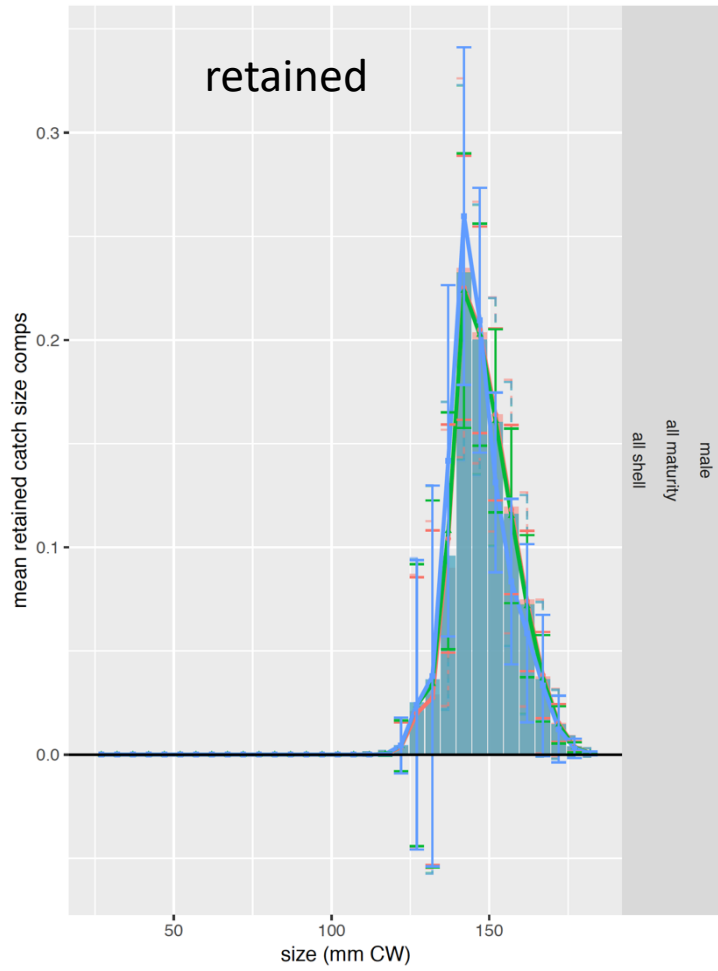
## val



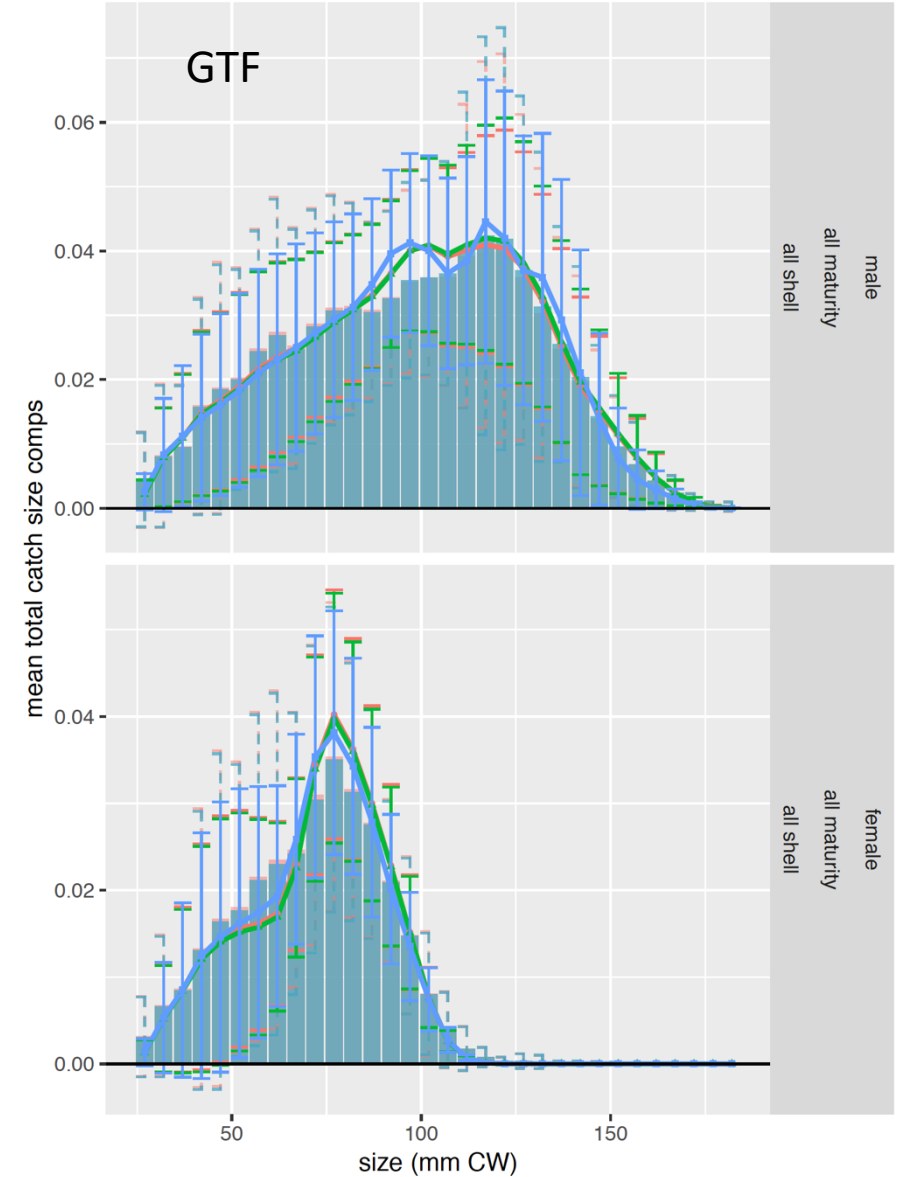
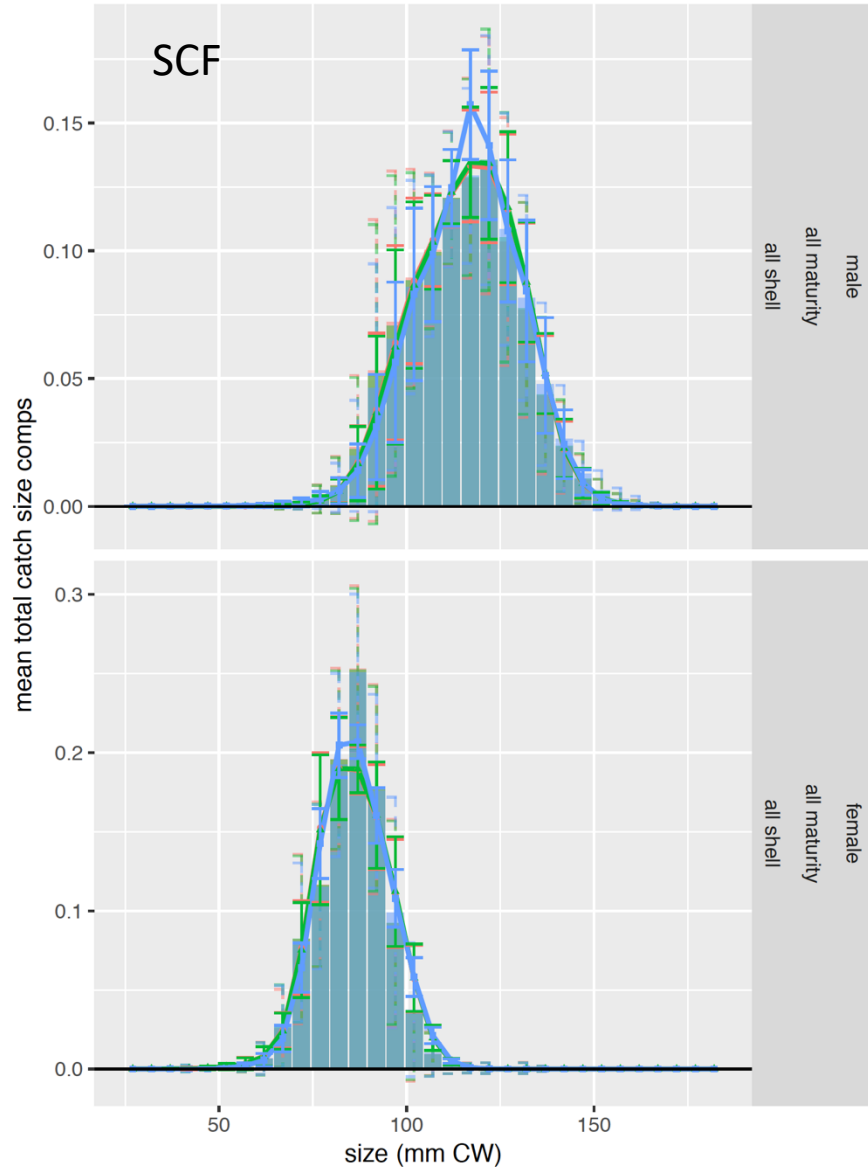
## sign



# Fishery Size Compositions



# Fishery Size Compositions



case

- 17AM
- 18AM17
- 18C2a

case



17AM



18AM17



18C2a

case



17AM



18AM17



18C2a

case



17AM



18AM17



18C2a

case



17AM



18AM17



18C2a