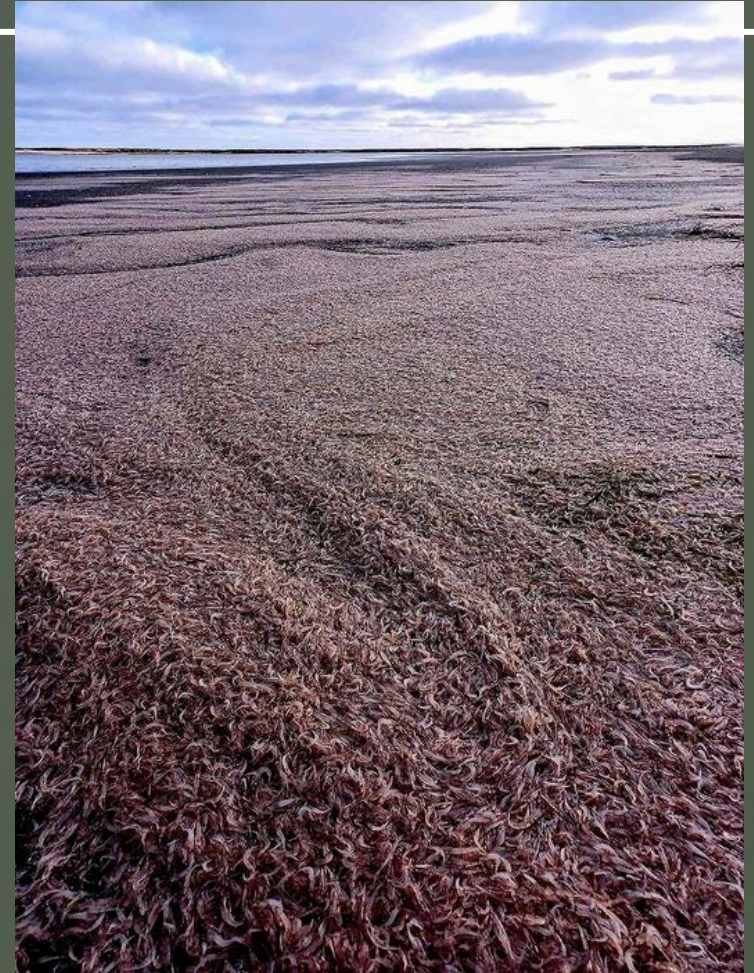

Opening remarks for SSC workshop on Climate Change Impacts



Bill Tweit
NPFMC Vice-Chair

With Climate Change comes:

- Rapid, unprecedented changes in the ecosystem
 - Increased difficulty balancing objectives such as protecting subsistence culture and obtaining optimum yield
 - Elevated scrutiny and concerns
 - Increased social conflict
-

Critical Management Needs for Success

- Understanding of the limitations of our current management tools.
 - Testing and proving the value of new approaches and tools.
 - Practical demonstrations of the value of EBFM.
 - Developing acceptance, familiarity and proficiency with decision-making with greater uncertainty and risk.
-

Where could we go wrong?

By not paying attention to:

- Choice of ecosystem indicators, as much a social issue as a scientific.
 - Very different perceptions among our diverse stakeholders and indigenous peoples, positive for some, negative for others.
 - Respectful inclusion of indigenous perspectives and knowledge
 - Paying insufficient attention to COMMUNICATION!
-

The recipe? Ingredients include:

- Development
- Inclusion
- Implementation
- Adaptive and flexible
- Defensibility
- Communication
- And, a dash of urgency!

