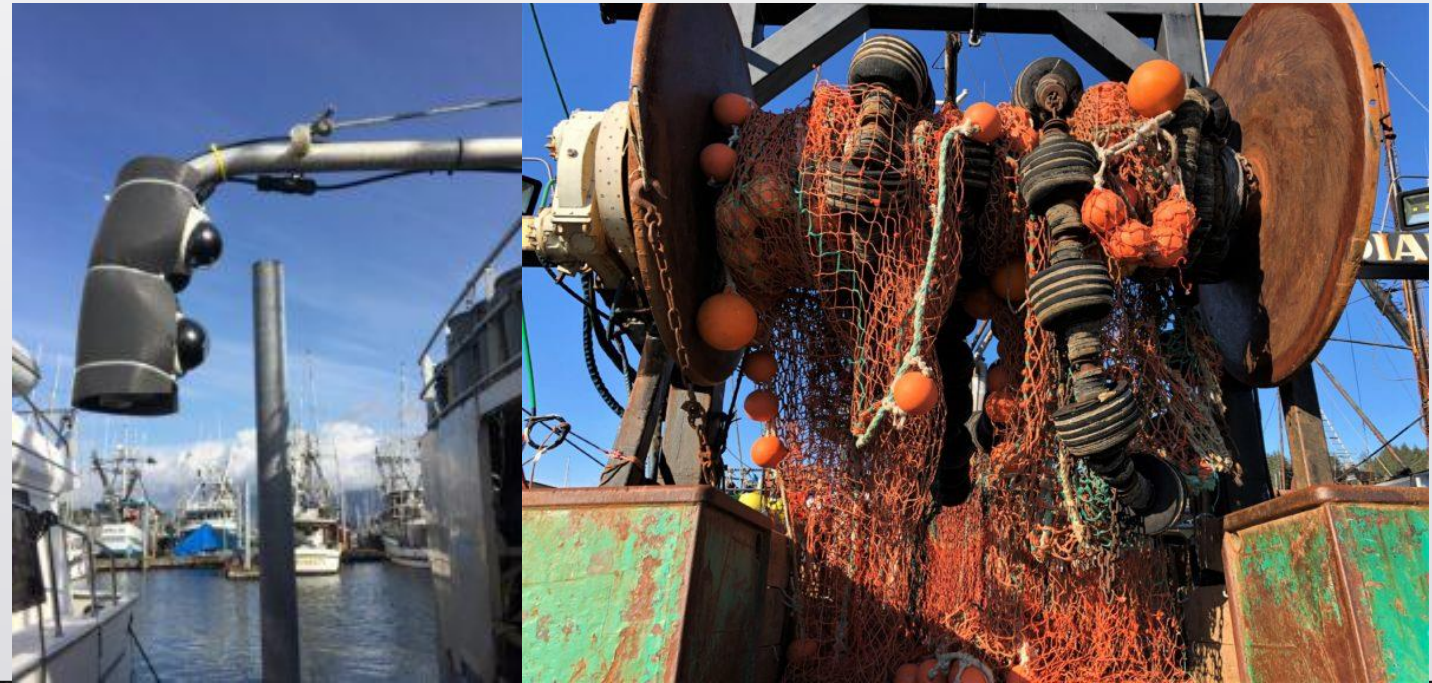


---

# D4 Trawl EM 2019 Cooperative Research Plan

DECEMBER 2018

Staff contact: Elizabeth Figus





Trawl CV EM Committee, established April 2018

- Focus = **Developing an EM program for compliance purposes on pelagic pollock trawl CVs and Tenders both delivering to shoreside processors with a defined retention requirement.**



# Outline of the CRP Document

- Introduction (p. 1)
- Background (p. 2)
- Links to Strategic Plan and EM Implementation Plan (p. 3)
- Research Elements (p. 4)
- Cooperative Research Case Studies (p. 8)
- Appendices (p. 13)



# Outline of the CRP Document

- Introduction (p. 1)
- Background (p. 2)
- Links to Strategic Plan and EM Implementation Plan (p. 3)
- **Research Elements (p. 4)**
- Cooperative Research Case Studies (p. 8)
- Appendices (p. 13)



---

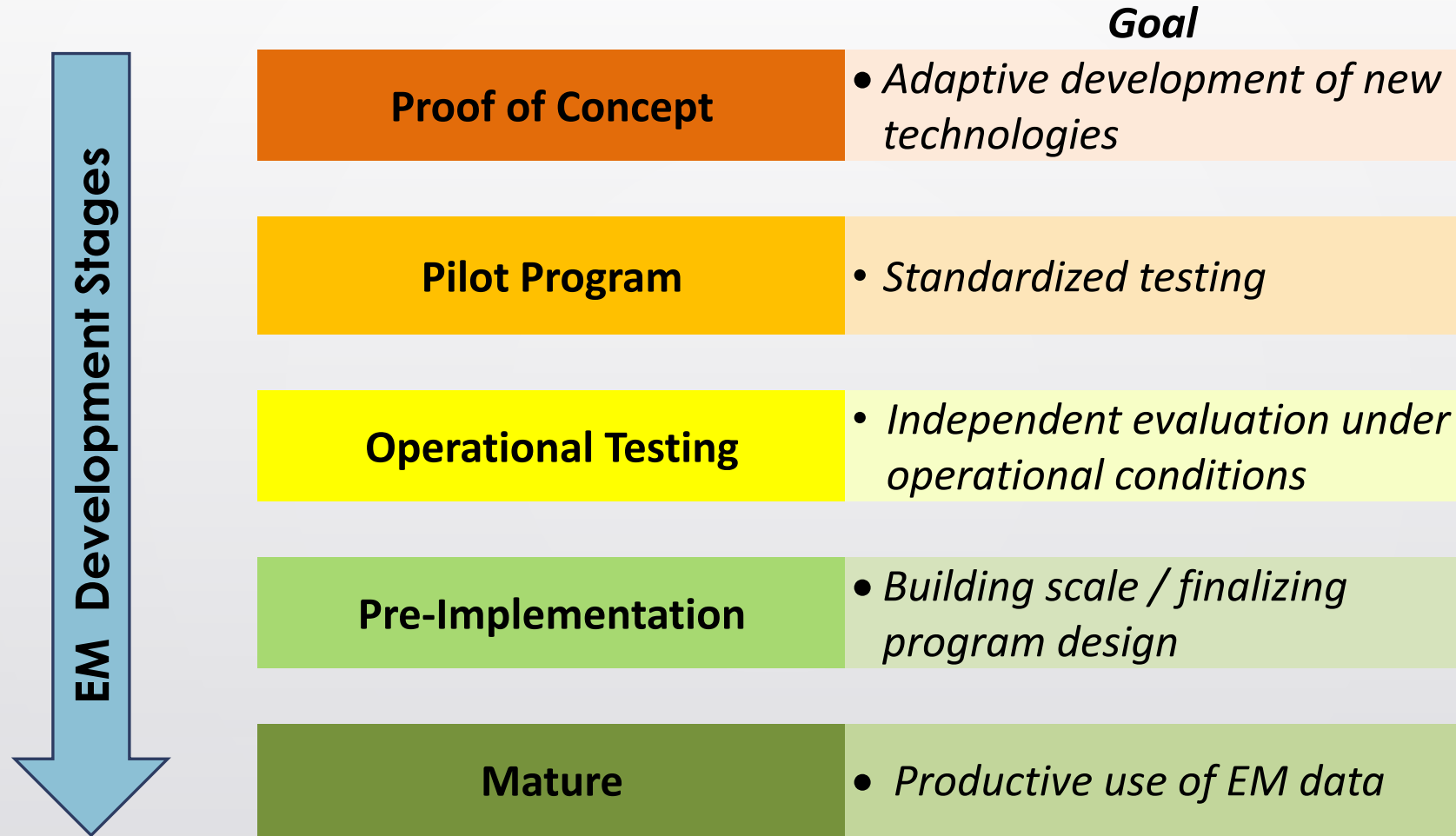
## Research Elements (p. 4)

- **Goal** = assess efficacy of EM for compliance
- **Objectives** (drafted June 2018)
  - improve salmon accounting
  - reduce monitoring costs
  - improve monitoring data
  - **examine retention/discard requirements (new)**

Camera Location Image



# Cooperative Approach: Stages of EM Development



# Research Elements (p. 4)

- **Research Questions**

- 9 questions
- drafted November 2018

- **Methods**

- field trials
- analysis
- evaluation

- **Timeline**

- 2019 install/operationalize EM systems
- 2020 EFP
- 2021 and beyond: potential regulatory analysis/change

Camera Location Image



Camera Location Image





# Cooperative Research (p. 8)

- **Phase I:** INITIAL TESTING

- 2018 PILOT PROJECT, Bering Sea pollock shoreside CV voluntary EM pilot project
- 2018 PROOF OF CONCEPT, Development and testing of EM in (Kodiak) plants

- **Phase II:** LARGER SCALE TEST UNDER EXISTING REQUIREMENTS

- 2019 NFWF grant for WGOA
- 2019 NFWF grant for BS/GOA

- **Phase III:** LARGER SCALE TESTING PLACEHOLDER





# Outline of the CRP Document

- Introduction (p. 1)
- Background (p. 2)
- Links to Strategic Plan and EM Implementation Plan (p. 3)
- Research Elements (p. 4)
- Cooperative Research Case Studies (p. 8)
- Appendices (p. 13)
  - Appendix A. **Discard White Paper**
  - Appendix B. **Data Streams Paper**
  - Appendix C. **Pelagic Pollock Trawl Catcher Vessel List**

Camera View Image





## **Actions** the Council may choose to take

- Approve the Trawl EM Committee 2019 Cooperative Research Plan, including new objective 4
- Comment on the cooperative research plan as needed
- Other action as necessary

////////////////////////////////////  
Thank you for your attention

Camera Location Image



Camera View Image

