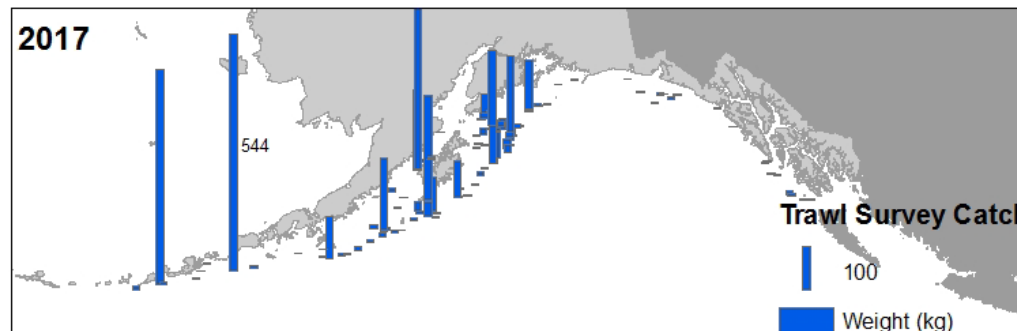
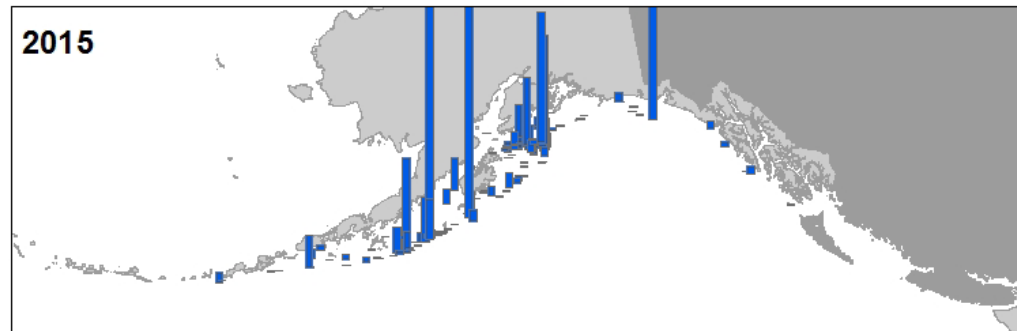
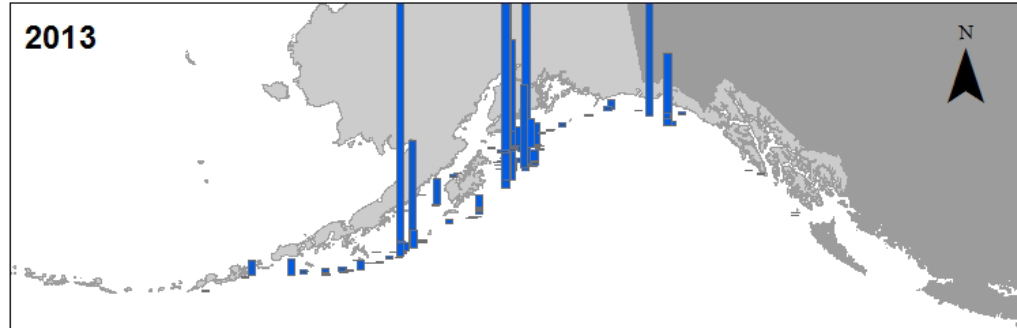


# Dusky Rockfish



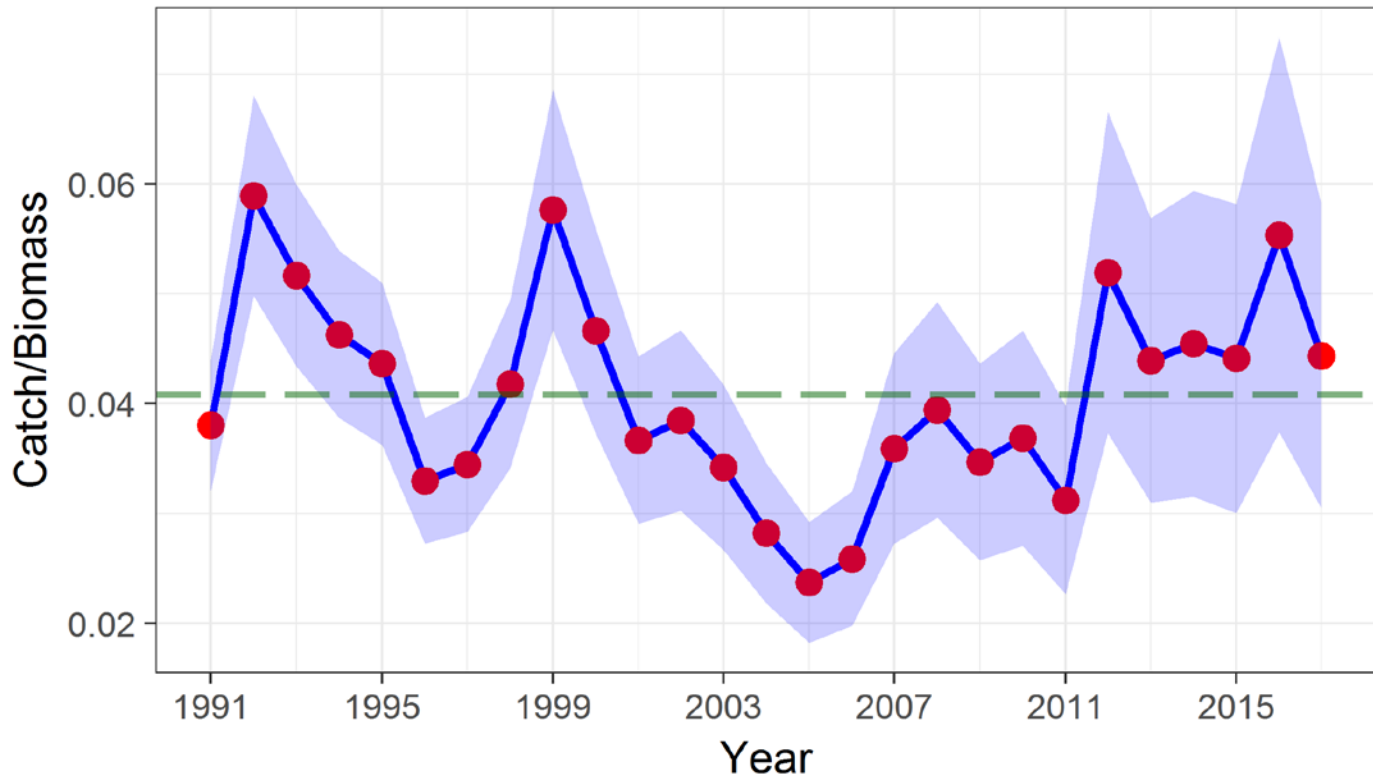
- Tier 3a species
  - Only update catches in projection model (Partial assessment year!)
  - Updated 2016 and estimated 2017-2019 catches
- Catch update:
  - Updated 2016 catch (3,328 t)
  - Geostatistical model for computing survey biomass
- Recommended 2018 ABC: **3,957 t**
  - 3% higher than 2017 ABC (4,278 t)
  - Very similar to year's projected 2018 ABC (3,954 t)

# 2017 Trawl Survey - Dusky



# Dusky rockfish

Dusky Rockfish Catch/Biomass w/ ~95% CIs



# Dusky rockfish - Apportionment

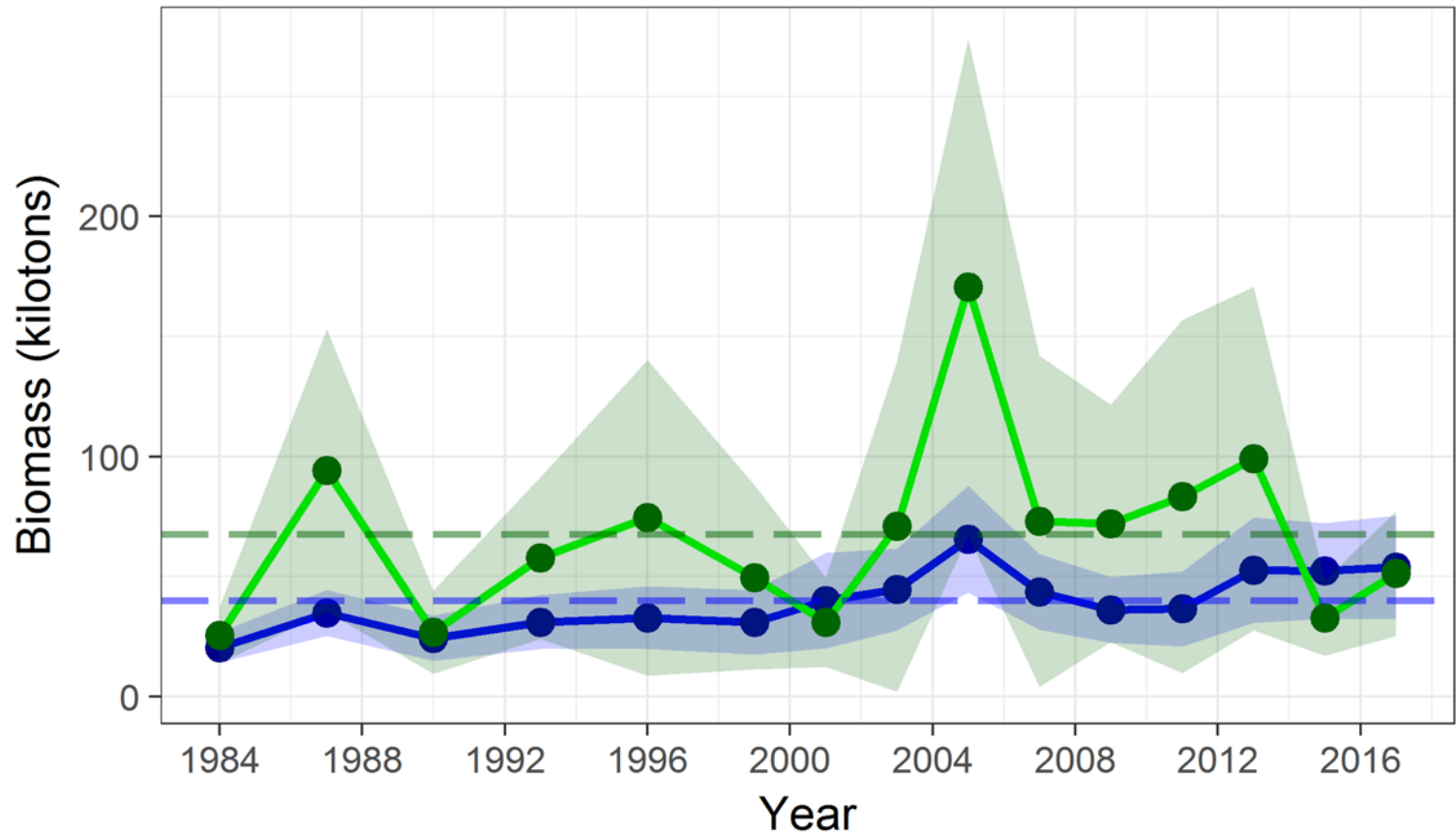
	Western	Central	Eastern	Total
2017 ABC	158	3,786	334	4,278
2018 ABC	146	3,502	309	3,957
2017 OFL				5,233
2018 OFL				4,841

# Dusky rockfish - Summary

- Projecting a decrease in ABC through 2019
- Catches are below ABC for 2016, 2017;  
Female spawning biomass is above B40
- Expect a full assessment using the new 2017 trawl data for 2018
- Expect to continue using and investigating the geospatial alternative survey biomass estimator (Plan Team Working Group) for 2018

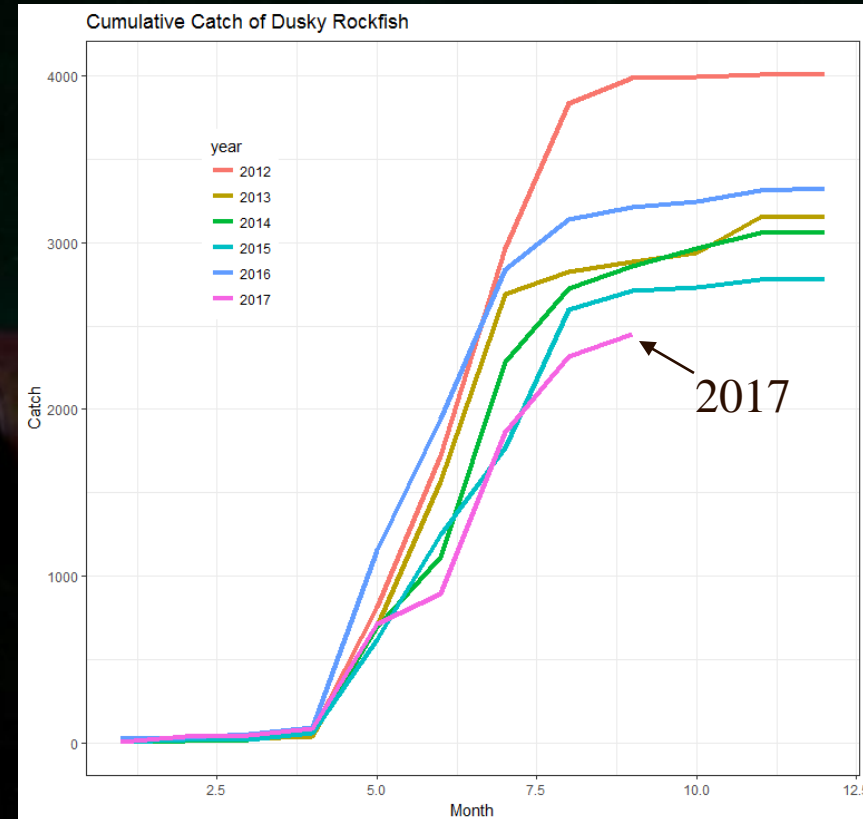
# Dusky rockfish – Bonus slides

GOA Dusky Rockfish Geospatial & Design-based survey biomass w/ ~95% CIs



# Dusky rockfish – Bonus slides

- Age and length comps examined – no indication of incoming recruitment.
- Catches accumulating more slowly in 2017 compared to past 5 years



	ABC (t)	Catch (t)	Projected female SB (t)	B40 (t)
2016	4686	3328	25238	17244
2017	4278	2450	23178	
2018	3957		21559	
2019	3668		20151	